

## Historic, archived document

Do not assume content reflects current scientific knowledge, policies, or practices.



62.37

LIBRARY  
RECEIVED

★ SEP 10 1923 ★

U. S. Department of Agriculture

**WHOLESALE**

# Price List

—TO—

**NURSERYMEN AND DEALERS ONLY.**



**J. G. HARRISON  
& SONS,**

**BERLIN, MARYLAND.**



1899

Perry & Hearn, Printers, Salisbury, Md.



## ONE THING AT A TIME.

**WE ARE NURSERYMEN** and not florists or seedsmen. We make a specialty of Peach Trees and use great precaution in selecting soil particularly adapted to them, and select seed only from sections where there is no danger of disease, from natural seedling trees. The general supervision of growing the trees is looked after by J. G. Harrison, the father.

Our strawberry plant business is conducted on a separate farm from the peach business by our Mr. G. A. Harrison, who not only selects the different soils particularly adapted to different varieties, and different fertilizers, but sees that each variety set out with our transplanter by three men and team, are not mixed when set, and a space of 6 to 7 feet is left between each variety, (of which there are about 75) that there be no mixing, and all orders are sent direct to the farm by telephone, and is not connected with other nursery work to cause delay. We have filled orders by the hundreds of thousand and even one million, and small orders down to half a dozen thankfully received.

The asparagus business not being one of so many varieties, is grown near the railroad siding where it can be handled promptly in spring.

**Fumigation**—To give our customers absolute safety, we have erected two large fumigating houses and all trees are now fumigated with

Potassium Cyanide Sulphuric acid, and we guarantee all trees free from any insect or taint of disease. No San Jose Scale or Yellows has ever been found in our county. This incurs some extra expense and should be appreciated by our customers.

**Packing**—Our packing is done in the best manner under our own direction. We have one storage building for trees, straw bales and other necessary equipments pertaining to the nursery work, 110 feet long 24 feet wide. Our office, a plain business arrangement, being under the same roof that packing is done. Building of fumigation, packing house and office 100 feet long 35 feet wide, and our Mr. Orlando Harrison has general management of office, and an oversight of all the general details. We are not shaped out for beauty, but convenience and business.

**Our Office** is about 100 yards from the Western Union telegraph office and United States and Adams express companies and P. W. & B. R. R., branch of Pennsylvania railroad. We can fill orders in season and can usually commence shipment about February 1st to 10th all depends on weather as our trees are now trenched in nature's soil near the packing house.

**To Our Patrons**—We thank you for past favors and assure you it has been only by hard pulling and sticking everlastingly at it that we are now ready to accommodate you better than ever before, and we now offer more of a general list of peach, apple, pear, plums, and above all, strawberry plants that will make you say O. K.

**J. G. HARRISON & SONS,**  
**Berlin, Md.**



# STRAWBERRIES.

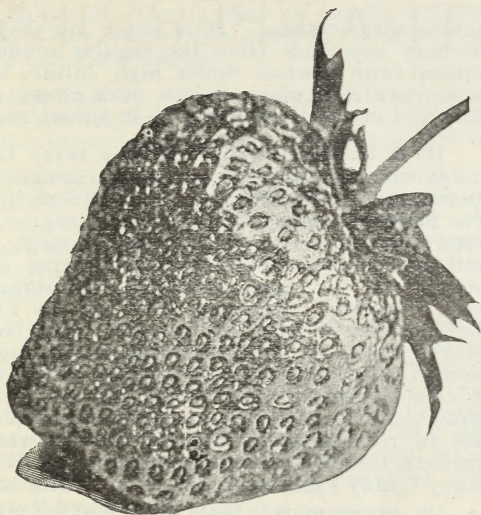
**DARLING**—“Plant our Darling; the most productive and earliest on our ground a seedling of Mitchel’s Early and has been fruited three seasons.”—Originator.

The writer saw it in fruit the past season: medium size, quality extra. In productiveness it is away up. Originator says it was the earliest on his ground where there were all the standard kinds grown. The plant is a beauty. Try them for earliness and productiveness.

**CARRIE**.—W. J. Green of the Ohio experiment station says it pleases him better than any berry recently introduced. It is a seedling of Haverland which it resembles in growth of plant, the fruit is firmer and with more color. The writer saw it in fruit this season and with the decision of others it was superior to anything else there was on the grounds. It proves to be an excellent shipper and we think it will rank among the general list of best sorts.

**UP-TO-DATE—13 Good Points**—The introducer says: 1st, plants strong and healthy; 2d, makes plants very freely; 3d, large staminate blossom; 4th stems hold berries well up from the ground; 5th, very productive; 6th, fruit of large size; 7th, beautiful in appearance; 8th, fine flavor; 9th dark red to centre; 10th, good shipper; 11th, good keeper after being picked; 12th, fruit drouth proof; 13th, canning and table qualities unexcelled.

**NICK OHMER**—To see the plants of this is pleasing to the eye. It is a strong grower with heavy crowns. We purchased quite a stock of them from the introducer, M. Crawford. Originated in Ohio by a most successful fruit grower.



NICK OHMER.

The introducer says: "After watching the Nick Ohmer for three years and hearing how it has behaved wherever I sent it for trial never having received one unfavorable report on it, I am confident that it is one of the most desirable if not the very best, ever sent out. There is no other in the market, or in sight, that I would plant with as much confidence. If restricted to a single variety it would be my first choice without a moment's hesitation. The plant is very large and strong sending out plenty of very strong runners. It is probably not surpassed in healthy vigorous growth and great productiveness by any variety. It has a perfect blossom. The fruit is of the largest, a giant

among strawberries. It is never misshapen. its only departure from the regular roundish conical form is, when under high culture it is somewhat triangular. It is a dark glossy red, firm and of excellent flavor."—M. Crawford.

**H. & H. NO. 3**—This is a new berry from the south and is highly praised by commission merchants in Washington and Philadelphia, Pa. Redfield & Sons of Philadelphia, say: "We believe it will carry well, being of large size and good color, what are required to bring good prices." E. J. Adams & Co., of Washington say: "Without exception they are the finest berries we have seen this season. They have every quality one could ask, being large, highly colored and of exceptionally fine flavor; in fact it comes about as near being perfect as any strawberry we have ever seen. We take pleasure in recommending them to all strawberry growers, for they are surely worth trying. When fancy Gandy's sold for 8c, H. & H. sold for 12c."

On our grounds it beats all in making plants Plant very vigorous in growth with bright green leaf.

**SEAFORD**—A chance seedling found apart from other plants. Its bright and vigorous habit attracted the attention of a farmer who stayed the hoe uplifted to destroy it as a weed. but instead transplanted it. The result is a berry of tremendous size and beauty. When planted beside one of America's standard varieties, the Bubach, which made a good crop of large showy fruit, the Seaford bore an immense crop of enormous strawberries doubling that of Bubach.

**GANDY**—The standard late berry. Plant a good grower and fruit of large size. When planted on rich low well drained soil it will surprise you.



**BUBACH**—The standard the world around, with 75 per cent of the growers. Large good color and heavy fruiter.

**BISMARCK**—Whenever Bubach is good, Bismarck should be better, for two reasons; first its perfect blossom and second it makes more plants.

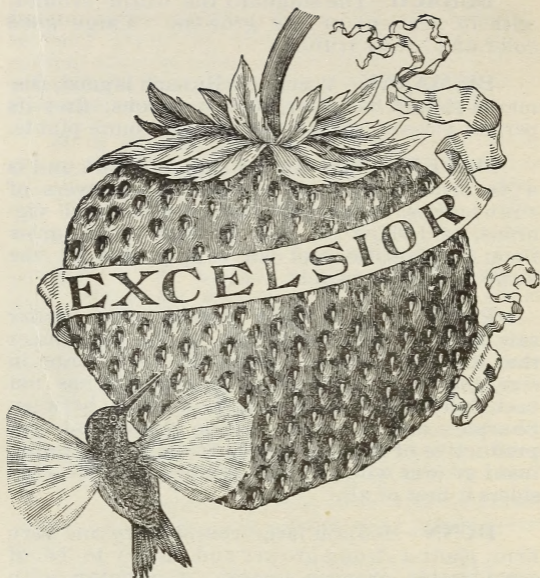
**HAVERLAND**—An old standard sort and is a favorite with most of the best growers of strawberries. Plants are large healthy and vigorous, and show no sign of rust. We grow them in quantities and can supply this by the hundreds of thousands.

**RUBY**—It is a Ruby indeed. The writer saw fruit of this exhibited by the introducer that was hard to beat. Large to very large in size, good color, firm and a good keeper; has not been fully tested here. It is a cross between Sharpless and Crescent. A fine grower and very productive of regular shaped fruit. One prominent grower who has 100 varieties says he considers it best of all.

**HUNN**—Medium large round berry and very firm; plant a strong grower and shows to be of considerable promise, season of ripening with the latest. Originated at N. Y. Experimental Station.

**REID'S PROLIFIC**—“The new one from the south. Extra early, high quality, a great bearer and a good shipper.—Introducer.

**WM. BELT**—Productive as Bubach, better grower and matures its crop well, more perfect in shape and better quality. Its color is perfect. It makes a medium quantity of strong healthy plants that are heavy rooted. The berries are large, with some larger than Bubach.



**EXCELSIOR**—Originated in Arkansas. Immensely productive and earlier than Hoffman a seedling of Wilson pollenized by Hoffman. Plant and fruit both showing larger and finer than Wilson, plant more upright than Hoffman and much stronger grower. We have a very fine lot of plants of this and our stock came direct from the originator.

**MARGARET**—Originated eight years ago at Dayton, Ohio. It has made a wonderful record, perhaps never equaled, and is now offered in great confidence. It responds readily to good culture and all careful growers may expect it to

produce the finest fruit in great abundance. Fruit usually conical but sometimes rather long but never coxcombed or mis-shapen, often necked, the color is dark glossy red and the berries are not inclined to have white tips.

Originator says of it: "We produced this valuable new berry from seed in 1891, and it has been thoroughly tested for the past four years and for vigorous growth and health of plant, hardiness, large size of fruit, enormous productiveness, firmness, good uniform shape, desirable bright glossy crimson color and superior quality it excels any leading variety we know of. It produces fine large berries in great abundance on thin land, and is desirable for home use, for fancy, nearby or for distant markets. Growers cannot afford to be without it.

**IMPROVED PARKER EARLE**—This is an improvement indeed over old Parker Earle. The plants grow much better, made twice the plants and the fruit is of larger size, and when planted on low, rich, moist soil they are heavy yielders, probably hard to beat, but the soil must be particularly adapted to suit them.

**RIDGEWAY**—One grower says all things considered he believes it to be the best staminate berry ever offered. A heavy fruiter, good shipper, and the plant is faultless in character, with large heavy dark green leaves.

**DELAWARE**—Several years ago, after inspecting my trial beds and strawberry fields, in which every known variety was fruiting, the originator of the new berry now named by him Delaware, remarked that he had a seedling better than anything he had seen before.

Berry large, deep red, very glossy, resembles Gov. Hoard in shape and size, is exceptionally

firm and a splendid shipper. Plant stout and vigorous, exceedingly prolific, blossom perfect, full of pollen which alone would make it desirable; medium early and holds its size to the end of the season. One grower says he will set 20 acres of it this season. The price has been made very low to enable planters to get a good start of it at once.

After handling it five seasons, Olivit Bros., leading commission merchants of New York, say: "It shows up handsomely in the crate and unlike other large berries, is solid to the core. They are so glossy they have the appearance of being varnished."

**STAR**—Large, perfect shape, a glossy crimson color, ripens as well as most large berries, all the berries average large, in quality it is among the best. It was the finest berry set before the writer last season.

**GLEN MARY**—The introducer says: "In productiveness it equals Crescent, and is twice the size. A giant among strawberries." T. C. Kevitt, of New Jersey, says: "It is the best on earth" *We don't say so.*

The following is our price for dozen, hundred and thousand. If 50,000 to 100,000 or more are wanted, send list of exactly what you want and number of each. We will meet competition with any reliable firm in the United States. We have **MILLIONS** of plants and expect to sell them.

## PRICE LIST FOR SPRING.

	12, mail post paid	100, Ex. not paid	1000, Ex. not paid.
Aroma.....	\$0 20	\$0 50	\$2 00
Bismark (per).....	20	50	1 75
Bubach (imp).....	20	40	1 50
Barton's Eclipse (per).....	20	40	1 50
Bedar Wood (per).....	20	40	1 25
Berlin (Imp).....	20	40	1 25
Brunette (per).....	20	40	1 25
Brandywine (per).....	20	50	1 50
<b>Carrie</b> (new).....	25	80	6 00
Clyde (per).....	20	50	2 50
Crescent (imp).....	20	30	1 00
Capt. Jack (per).....	20	30	1 00
Cobden Queen.....	20	60	4 00
Clarence.....	1 50	10 00	75 00
Columbia.....	20	40	1 50
Cumberland.....	20	40	1 50
Cyclone.....	20	40	1 50
<b>Darling</b> (new).....	2 00	12 00	100 00
Delaware.....	20	50	2 50
Dayton.....	20	40	1 00
Excelsior.....	50	1 50	6 00
<b>Enormous</b> (per).....	20	40	2 00
Eleanor (per).....	20	40	1 00
Enhance (per).....	20	40	1 50
Evans.....	20	40	2 00
Giant.....	20	60	4 00
Gardner.....	20	40	2 00
Gandy.....	20	40	1 50
Gandy Belle.....	20	40	1 50
Greenville.....	20	40	1 50
Glen Mary.....	20	50	1 50
H. & H.....	20	50	1 50
Haverland.....	20	40	1 25
Hoffman.....	20	30	1 00
Holland.....	20	40	2 00
Hersey.....	50	1 50	10 00



Howell's Seedling.....	1 00	3 00	20 00
Hunn.....	20	60	4 00
Imp'd Parker Earle (per)..	20	50	2 50
Jessie (per).....	20	50	2 00
Kansas Prolific.....	25	40	1 50
Lady Thompson (per).....	20	40	1 25
Lovett.....	20	40	1 25
Marshall (per).....	20	50	3 00
Magoon.....	20	50	2 00
Margaret (per).....	20	50	3 00
Mitchel's Early (per).....	20	30	1 00
Morgan's Favorite (per)....	20	50	2 00
Meek's Early (per).....	20	30	1 25
Nick Ohmer.....	50	1 25	8 00
Ocean City.....	20	50	2 00
Pride of Cumberland.....	20	40	1 50
Paris King.....	20	50	2 00
Ruby (per).....	20	50	2 00
Reid's Prolific.....	20	50	2 50
Ridgeway.....	20	50	2 00
Rio (per).....	20	40	1 50
Seaford, or Lloyd.....	20	50	2 00
Star (per).....	20	50	3 00
Splendid (imp).....	20	40	1 50
Saunders (per).....	20	40	1 50
Sharpless (per).....	20	40	1 50
Sunnyside (imp).....	20	50	2 00
Staples.....	20	50	2 00
Tennessee Prolific (per)....	20	40	1 10
Up-to Date.....	25	80	5 00
Young's Early Sunrise.....	20	40	1 25
Wm. Belt (per).....	20	40	1 50
Warfield (imp).....	20	30	1 00
Wilson (per).....	20	40	2 00
Woolverton (per).....	20	40	1 50

Plants tied 25 in bunch and packed light.

# Peach Trees.

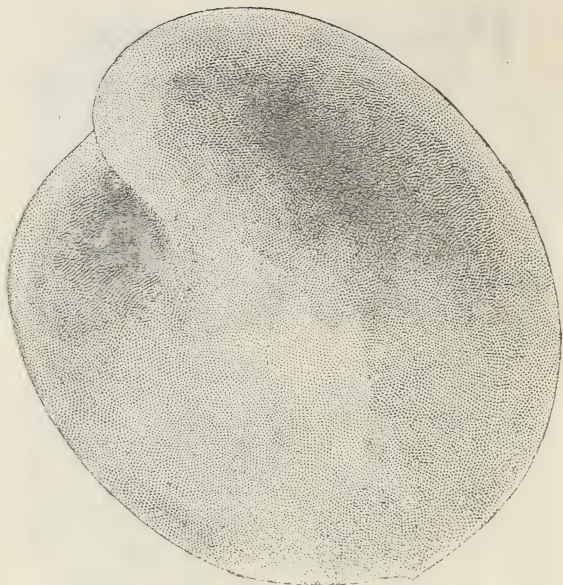
This being one of our strongest specialties we are second to none in the United States. We have more peach trees in our nursery, at this writing, than any other firm can show, and the quality is among the best grown from natural seed and on virgin soil, guaranteed free from any taint of disease. Being located in a section where there are but few peaches grown, only for family use, you are taking no risk of being hit by a Spaniard or affected by the yellow fever or measles. Being near the ocean you get the benefit of the fresh air, which develops in a healthy diet.

**WADDELL**—This remarkable new peach belongs to the North China type which is the most hardy, vigorous and reliable of any class we have. The tree is a heavy, stocky grower, with the low, spreading habits so distinctive of its class, and while it is not quite so irregular as Sneed, it is somewhat like it. *Its fruit buds and blossoms are among the most hardy, and twice since 1890 it has produced a full crop of fruit when other standard varieties failed entirely.*

I believe, except in very rare instances, it will prove to be a *sure annual bearer*, which is an exceedingly strong point in its favor.

Mr. Waddell, the originator, writes me: "*The blossoms were frozen stiff one year and yet it bore a crop of fruit when other varieties were all killed.*"

"The fruit is of medium to large size, oblong, rich, creamy white with bright blush on sunny side, often covering two-thirds of the peach, skin thick, flesh firm, rich, sweet and melting when fully ripe, freestone, almost as *large and fine in appearance as Belle of Georgia or Oldmixon but ripens fully a month*



*ahead of those superb varieties, or soon after August 1st here in Central Connecticut."*

*"A hardy peach of such size and beauty, ripening so early, is bound to be profitable; fruit from 100 Wandall trees in early August is likely to bring more money than the fruit from 500 other trees in September. I am willing to risk my peach reputation on the claim that Waddell is the largest most beautiful, finest flavored, best shipping and longest keeping pedch of its season yet tested."*

The above is J. H. Hale's description. Our buds came from him.

One year trees 50c each, \$4 per dozen, \$25 per 100. June buds 25c each, \$1.50 per dozen, \$5 per 100, Buds \$1 per 100, \$8 per 1000.

**CARMAN.**—Closely following Waddell we have in Carman another peach of North China type that promises great value. The originator says it is either a seedling or a sister to Elberta; tree of same habit of growth, only has larger and darker colored foliage. Tree hardy and productive, and fruit practically rot proof, as original tree, standing in low, wet ground, has perfected its fruit two seasons, while other varieties all about have rotted entirely. Carman is described as large, broadly oval in form, pointed; skin yellowish white, dotted and flushed red; flesh of creamy white, slightly tinged red, of a sprightly vinous flavor. *The Rural New-Yorker*, first described it some years ago as an extra large, yellow peach, like Elberta only five weeks earlier; it certainly is of Elberta type, but is not strictly a yellow peach, neither is it white. *The Texas Farm and Ranch* says: "Carman peach is of large size, oblong, resembling Elberta, and is the best flavored early peach we know; the skin is tough, and it is just the peach to ship a long distance." The above is J. H. Hale's description. Price, one year trees, 25 cents each, \$2 per dozen, \$10 per hundred,; June buds, 20 cents each, \$1 per dozen, \$3.50 per hundred, \$30 per thousand. Buds, \$5 per 1000, 3000 for \$12, 5000 for \$15.

**EUREKA**—Early, semi cling, seedling of Chinese Cling: Medium size, oblong, cream white with red blush, tender and juicy when fully ripe, clear seed, delicious flavor. Ripens at place of origin, in Louisiana, June 15th. Price of one year trees 2 cents each, \$8 per hundred, \$60 per thousand; June buds half price. Buds \$2 per thousand.

## OUR BUDED LIST OF PEACHES.

Amsden Jude, Alexander, Brandywine, Bilyeau's October, Bernard's Early, Bray's R. Ripe, Crawford's Late, Crawford's Early, Conet's So. Early, Champion, Chair's Choice, Crosby, Connecticut, Chinese Cling, Eureka, Elberta, Early Rivers, Early Michigan, Fox Seedling, Foster, Fitzgerald, Ford's L. White, Geary's Hold-on, Greensboro, Gold Drop, Globe, Hill's Chili, Hale's Early, Kalamazoo, Lemon Free, Lewis Lorentz, Lery's Late, Moore's Favorite, McIntosh Morris' White, Mt. Rose, New Prolific, Old Mixon Cling, Old Mixon Free, Prize, Reeve's Favorite, Stephen's Rare Ripe, Smock, Salway, Snow's Orange, Stump the World, Sneed, Triumph, Thurber, Troth's Early, Wonderful, Wheatland, Wager, Willet, Walker's Varigated-Free, Wilkins's Cling, White Heath Cling, Waterloo.

## PRICE OF PEACH TREES.

grown from natural seed and on virgin soil.

	Each	12	100	1000
First class, extra 9-16				
to $\frac{5}{8}$ , 5 to 7 ft....	\$0 10	\$0 75	\$4 50	\$40 00
First class, $\frac{1}{2}$ to 9-16				
4 to 6 feet.....	10	60	4 00	35 00
First class, $\frac{3}{8}$ to $\frac{1}{2}$ , 3				
to 4 feet.....	6	40	3 00	25 00
First class, branched				
2 to 3 feet.....	3	35	2 50	20 00
First class, whips, 1				
to 2 feet.....	3	25	2 00	15 00
June buds, 18 in. to				
$2\frac{1}{2}$ feet .....	3	35	2 50	20 00
June buds, 8 in. to				
15 in.....	3	25	2 00	15 00

If June buds are to go by mail add \$1 per 100, if dozen add 15c.

**Special Price on Car Load Lots.**



## PRICE OF PLUM TREES.

Plum on peach root one cent each extra from peach grades.

**VARIETIES:** Abundance, Satsuma, Wild Goose, Willard Chabott, Red June.

Most of the plum are 3 to 4 ft. and 4 to 5 ft.

### PLUM ON PLUM,

	Each	12	100
Extra, 7 to 8 ft, 1 in. cal...	\$0 20	\$2 00	\$12 00
5 to 6 ft., $\frac{3}{4}$ to 1 in.....	20	1 50	10 00
5 to 6 ft., $\frac{5}{8}$ to $\frac{3}{4}$ in.....	15	1 50	8 00
4 to 5 ft., $\frac{1}{2}$ to $\frac{5}{8}$ in.....	12	1 00	6 00
3 to 4 ft.....	10	75	5 00
June buds.....	\$20 per 1000	5	50
		2 50	

Hale Plum 2 cents each extra.

In June buds have only Abundance, Burbank, Wickson and Hale, principally Abundance and Burbank.


## PRICE OF APPLE TREES,

smooth and free from Apias:

	each	12	100	1000
First class extra, $\frac{3}{4}$ up, 5 to 7 ft.....	\$0 10	\$1 00	\$8 50	\$80 00
First Class, $\frac{5}{8}$ to $\frac{3}{4}$ , 5 to 6 ft.....	10	80	8 00	70 00
First Class, $\frac{1}{2}$ to $\frac{5}{8}$ , 4 to 5 ft.....	8	70	7 00	60 00
First Class, 3 to 4 ft..	7	60	5 00	40 00

York Imperials 5c per tree extra on all grades except 3 to 4 feet, on this 2 cents per tree extra. Principal varieties in heavy grades are: Baldwin, Mammoth Black Twig, Grimes Golden, Wine Sap, Ben Davis and Maiden's Blush. In addition to this we have Jonothan, Mo. Pippin, N. W. Greening, Rambo, Wealthy, Red Astrach-

an, Northern Spy. Yellow Transparent, Gano, Duchess, Hass Walbridge and Hyslop Crab. In the light grade, 3 to 4 feet, we have several additional varieties such as Smith's Cidar, Stark, etc.

 For Pear, Cherry and Quince, send list wanted, varieties and size,

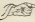
## SHADE TREES.

Carolina Poplars, 10 to 12 feet, 20 cents each; \$18 per 100; 8 to 10 feet, 15 cents each, \$10 per 100.  
 Sugar Maples, 8 to 10 feet, 10 cents each.  
 Norway Spruce, 3 feet, 25 cents each.  
 Irish Juniper, 3 feet, 25 cents each.  
 Siberian Arborvitæ, 3 feet, 20 cents each, \$15 per 100.

## ASPARAGUS ROOTS.

ONE YEAR, NO. 1.

	12	100	1000
Columbian Mammoth W.....	\$0 30	\$1 00	\$2 00
Donald's Elmira.....	30	75	2 00
Palmetto .....	30	60	1 50
Barr's Mammoth.....	25	60	1 25
Conover's Colossal.....	25	50	1 25

 No. 2, 1 year roots, 25 cents less per 1000.

## CURRENTS.

TWO YEARS.

	Each	12	100
Cherry.....	\$0 08	\$0 50	\$2 50
Victoria.....	08	50	2 50
Red Dutch.....	08	50	2 50

## TWO BEST RED RASPBERRIES.

	12	100	1000
Miller Red.....	\$0 50	\$0 70	\$5 00
Cuthbert.....	40	65	5 00

# TERMS AND ADVICE.

**SHIPPING FACILITIES GOOD**—Located at the junction of the Delaware, Maryland and Virginia railroad, which connects for all points north, and the Baltimore, Chesapeake and Atlantic Railway, which connects with the Baltimore and Ohio for all points west and south, and only eight miles from the Atlantic Ocean, where the favorite summer resort Ocean City is situated.

**ALL ORDERS** will be filled with the greatest promptness possible, correctly labeled and packed by experienced packers.

**WHEN BEST TO ORDER**—Order now. Do not wait until you are ready to plant. Your order will not be shipped until the proper time or until you wish it.

**HOW BEST TO REMIT**—Remit by Bank Draft, Express Money Order or Post Office Money order on Berlin Postoffice, Registered Letter, or Stamps for fraction of a dollar.

**PAYMENTS INVARIABLY IN ADVANCE**—Goods sent C. O. D. only when one fourth the amount is sent with order with charges for returning money added to bill, or usual terms of firms of good rating.

**SPECIAL LOW EXPRESS RATE**—By special arrangement we are able to send plants by express to any part of the country at 20 per cent. off from regular rate. We interest ourselves in giving our customers a low express rate on all shipments. We have the Adams and United States express.

**GUARANTEE**—While we exercise the greatest care to have every tree and plant true to name, and are ready on proper proof, to replace anything sent by us that may prove untrue to label free of charge, it is understood and agreed between purchasers and ourselves, that we are not to be held liable for any greater sum than that paid for said trees that may prove untrue.

**CLAIMS FOR DEDUCTION** receive due consideration.

**OUR MONEY** is invested in growing pure stock and not in expensive catalogues.

**WHEN TREES AND PLANTS ARE RECEIVED** dip in water then bury the roots in moist shady ground until planted.

NO SCALE  
NO YELLOWS  
NO ROSETTE } Has Ever Been Found In  
Our County.

## The Maryland Experimental Station.

### Entomologist's and Pathologist's Certificate of Nursery Inspection.

**To Whom It May Concern:** This is to certify that on the 2d day of September, 1898 we examined the nursery stock of J. G. Harrison & Sons, growing in their nurseries at Berlin, county of Worcester, State of Maryland in accordance with the laws of Maryland, 1898, Chapter 289, Sec. 58, and that said nurseries and premises are apparently free, so far as can be determined by inspection, from the San Jose Scale, Peach Yellows, Pear Blight or other dangerously injurious insect pests and plant diseases. This certificate is invalid after August 1, 1899, and does not include nursery stock not grown within this state, unless such stock is previously covered by certificate and accepted by the State Entomologist and State Pathologist.

WILLIS G. JOHNSON, State Entomologist,

CHARLES O. TOWNSEND,

College Park, Md., Sept. 3, 1898.

State Pathologist.

### FUMIGATION.

In accordance with our state law we Fumigate all trees with Potassium Cyanide and Sulphuric Acid and we GUARANTEE our trees free from any insects or taint of disease. No SCALE or YELLOWS has been found in our county.

J. G. HARRISON & SONS.

**REFERENCE**—R. G. Dunn & Co, or any banker or merchant in our town.





