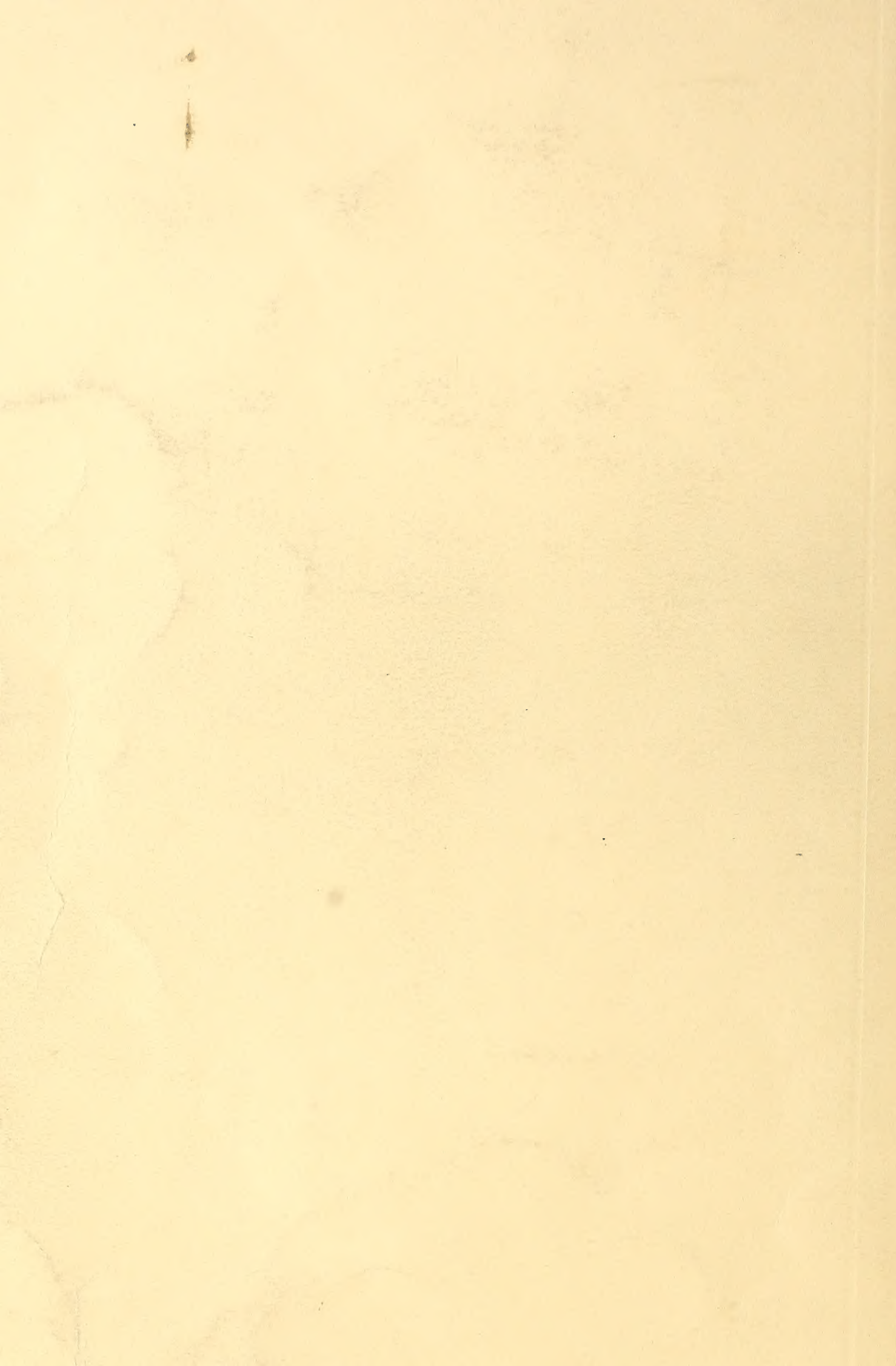


Historic, archived document



Do not assume content reflects current scientific knowledge, policies, or practices.



62.23

LIBRARY
DEC 1 1926
U.S. Department of Agriculture

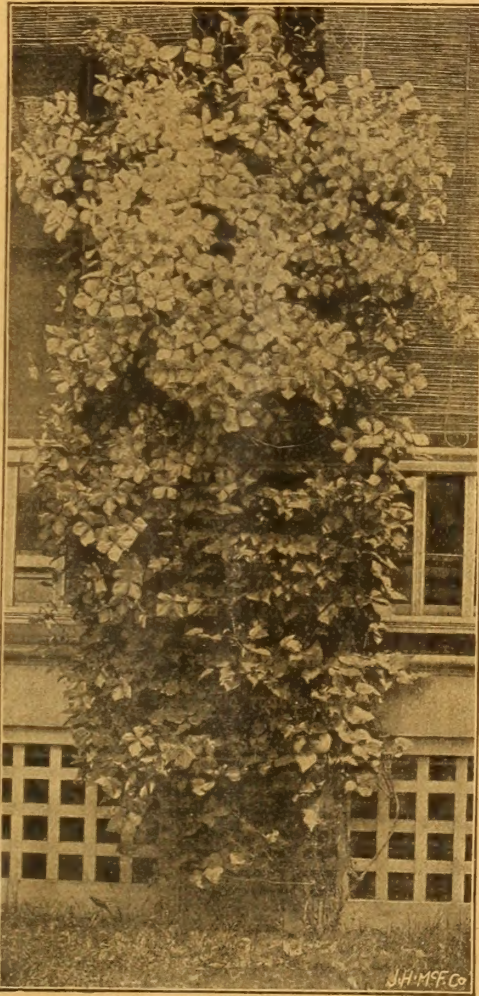
W. W. BARNARD & CO.
SEEDSMEN

161-163 KINZIE STREET   CHICAGO

Wholesale Price-List

of

Seeds
Bulbs &
Supplies
for
Florists



LARGE-FLOWERED CLEMATIS.

J.H.M.F. Co.



SPRING
1903

FLORISTS' WHOLESALE LIST of Seeds, Bulbs, Dormant Plants and Supplies

CONSTANTLY increasing business brings with it a demand for additions to almost every line of stock. Under the separate heads of **Flower Seeds, Bulbs, Dormant Plants and Sundries** will be found a number of new introductions as well as the time-tried stand-bys. The prices have been revised and supersede all others in previous lists.

For anything you require in connection with our business and not found in the following pages, please correspond with us. The services of our **Purchasing Department** are free to all florists.

As heretofore, **QUALITY** with us is the first consideration. With full stocks and every facility to execute your orders carefully and well, we ask the pleasure of supplying your needs.

TERMS OF SALE.

ALL general bills of Flower Seeds, Bulbs, Plants and Supplies (except as otherwise stated) are payable **60 days from date of invoice**, subject to 2 per cent discount from prices in this book for cash in 10 days.

Fertilizers, Grass Seeds, Green, Holly, Tin Foil, net cash and subject to fluctuations of market.

Special terms, when desired will be made by correspondence on large orders. Unknown correspondents desiring credit are requested to furnish satisfactory references. C. O. D. orders should be accompanied by one-third of amount of purchase.

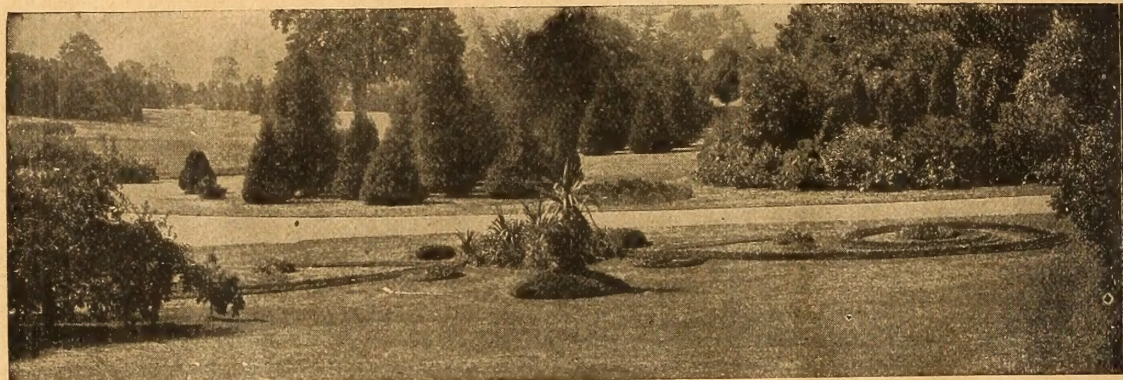
Shipping Directions should accompany each order. State definitely if you wish us to send by express or freight. In absence of instructions we reserve right as to route and manner of transportation.

No charge for packing, cartage nor delivery to any transportation company in Chicago.

WHILE we exercise great care to have all Seeds, Bulbs and Plants pure and reliable, we give no warranty, express or implied, as to description, quality and productiveness, or any other matter, of any Seeds, Plants and Bulbs we send out, and we will not be in any way responsible for the crop. If the purchaser does not accept the goods on these terms they are at once to be returned.

W. W. BARNARD & CO.

BARNARD'S "Perpetual Green."



GRASS SEED FOR LAWNS.

ALMOST every florist doing a retail business can with profit sell "Grass Seed for Lawns." More and more the taste for a beautiful green spot around the home is growing.

The grasses of which our "Perpetual Green" brand is composed will, in a short time, produce a green and velvety turf, which will endure the intense heat of mid-summer.

"Perpetual Green" is put up in attractively gotten up boxes which retail at 15c for half-pound, and 25c per pound. **Wholesale price to Florists:** ½ lb. 8c. 1 lb. 15c. Also supplied in 5, 7 and 14 lb. bags at 15c per lb.

THE QUANTITY TO SOW.

It is unwise to be economical in the quantity of seed used if the best results are desired. One pound will sow a plot of six hundred square feet; 4 bu. (56 lbs.) to the acre.

Kentucky Blue Grass, Fancy cleaned, 1 lb., 15c; 5 lbs., 65c; 10 lbs., \$1.20.

Red Top, Fancy cleaned, 1 lb., 15c; 5 lbs., 65c; 10 lbs., \$1.25.

White Dutch Clover, 1 lb., 30c; 5 lbs., \$1.25.

BOOKS FOR FLORISTS AND MARKET GARDENERS.

Mailed to any address in United States. Send your order and the price to us. **Any other work on gardening or kindred topics supplied at publishers' prices.**

Asparagus Culture. (Hexamer.) Advice on Planting, Cultivation, Harvesting and Marketing. Cloth.....\$0.50

Art of Propagation of Trees, Plants, etc..... .30

Florists' Manual, The. (Wm. Scott.) Thoroughly up to date. Beautiful illustrations. Every florist who would post himself on latest methods and general plant information should own the book..... 5.00

Gardening for Profit. (Henderson.) Cloth.... 2.00

Grape Training, American. (Prof. Bailey.) .75

Greenhouse Construction. (Prof. Taft.) Teaches how to build, heat and ventilate greenhouses, hotbeds and frames..... 1.50

Handbook of Plants. (Henderson.) Latest Edition..... 3.50

Horticulturist's Rule Book. (Prof. Bailey.) Valuable for workers in garden, greenhouse or farm.....\$1.00

Insects and Insecticides. (Weed.)..... 1.50

Market Gardener, The Young. (Greiner.) Intended for beginners. It is bright and practical..... .50

Mushroom Culture. (Robinson.) English..... .50

Mushrooms, How to Grow Them. (Falconer.)..... 1.50

Nursery Book, The. (Prof. Bailey.) A complete guide to the multiplication of plants..... 1.50

Onions for Profit. (Greiner.)..... .50

Pruning Book, The. (Bailey.) Explains in detail. 1.50

Rhubarb Culture, The New. (Morse.) A guide to dark forcing and field culture..... .50

FRESH FLOWER SEEDS FOR FLORISTS.

WE HAVE renewed our efforts to supply ourselves with a stock of Flower Seeds, especially adapted to the use of Florists, recognizing the fact that only the most select varieties (and the highest type of each variety) are suitable for their requirements. We believe we can please you if entrusted with your order.

PREPAID.—We pay postage on all Flower Seeds in trade packets and ounces. Postage extra on one-fourth pound or over. Rate, 8c per pound.

CASH DISCOUNT.—On Flower Seed orders a special discount of 10 per cent is granted for cash with order.

Trade Packets

Contain liberal quantities in proportion with the price per ounce, and are sent on all orders unless otherwise specified. Where smaller quantities than Trade Packets are desired, Retail Packets may be ordered at a discount of 33½ per cent from retail prices.

Novelties in Flower Seeds.

New Dwarf Aster, "Walderssee."

THIS NOVELTY is an entirely new, dwarf variety, measuring 8 to 9 inches in height, having many branches upon one short, strong stem. Well suited for pot culture and bedding, being literally covered with small, flat rose-colored flowers edged with white. Trade pkt., 25c.

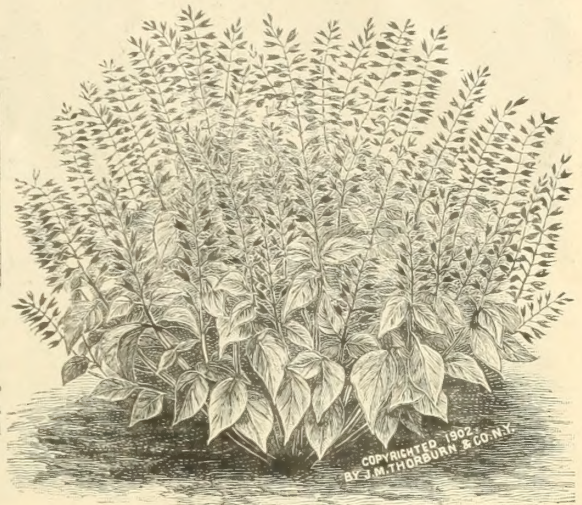
Glaucium Flavum Tricolor.

This hardy Horn Poppy from Asia Minor grows from 2 to 2½ feet high. It bears large flowers of orange red color with black spots at the base of each petal. Blooms from July until Fall. Trade pkt., 15c.

Half Dwarf Perennial Larkspur.

These Half Dwarf Larkspurs never reach more than 3 to 3½ feet in height. The plants are branching in habit, free and long continued in bloom, producing flowers in all shades of blue from lightest celestial to deepest indigo. Trade pkt., 25c.

	Trade Pkt.	oz.
ABRONIA		
Umbellata. Fragrant Trailer.....	\$.05	\$.20
ABUTILON		
Hybridum. Best mixed15	
ACROCLINEUM		
Red and White, fine everlasting.....	.05	.15
ADLUMIA		
Cirrhosa. (Allegheny Vine).....	.10	.70
ADONIS		
Æstivalis. Scarlet.....	.05	.10
AGATHEA		
Coelestis. (Blue Daisy.) ¼ oz., 25c.....	.10	
AGERATUM		
Dwarf, blue.....	.10	.25
Dwarf, white.....	.10	.25
Mexicanum, blue.....	.05	.15
" white.....	.05	.15
Blue Perfection. New, dwarf, dark-blue, very fine.....	.10	
ALYSSUM		
Little Gem. Very dwarf.....	.10	.25
Maritimum (Sweet Alyssum), 4 oz., 50c.....	.05	.15
Saxatile, yellow, perennial.....	.10	.20
AMARANTHUS		
Caudatus. (Love lies bleeding).....	.05	.10
AMPELOPSIS		
Veitchii. (Boston Ivy).....	.10	.15
ANEMONE		
Coronaria. Mixed.....	.10	.40
ANTIRRHINUM—(Snap Dragon.)		
Tall, mixed.....	.05	.15
Dwarf, mixed.....	.10	.30
Queen of the North. White.....	.10	.30
Giant Flowered. Mixed.....	.10	.30



DWARF SALVIA, "Lord Fauntleroy".

For bedding, this Salvia is fully as suitable as Geraniums in respect to height and compactness. Its foliage is dark green, with very erect, bright scarlet flowers. Trade pkt., 25c.

NEW SNAPDRAGON, "QUEEN VICTORIA."

Handsome, large white flowers on long stalks. Splendid for making up into bouquets. Antirrhinum can be grown in a cool greenhouse. In winter the cut flower spikes sell readily. Trade Pkt., 25c.

	Trade Pkt.	oz.
AQUILEGIA or Columbine.		
Single, mixed.....	\$.05	\$.15
Double, mixed.....	.05	.15
Chrysantha. Golden-yellow.....	.10	
" fl. pl. Double flowered.....	.10	
Colrulea. Blue and white.....	.10	
ARCTOTIS Grandis. (Novelty.)		
An annual of bushy habit, from southwest Africa. Grows 2-2½ feet high, bearing daisy-like flowers on long stems. The ray florets are pure white on upper surface with a narrow, yellow zone at their base. The under side of the petals is pale lilac. It has proven itself admirably adapted for cultivation in our climate.....	.25	

ASPARAGUS, ORNAMENTAL.

Invaluable for decorative purposes. Both varieties come readily from seed. The foliage is as bright and feathery as common asparagus with the form of a running vine. Write for price in large quantity.

Plumosus nanus, 100 seeds, \$1.00 | **Sprengeri**, 100 seeds, 30c

	Trade Pkt.
AURICULA—(Primula.)	
Fine, mixed.....	\$.25

ASTERS

NEW SEED OF SUPERIOR QUALITY

OUR ASTER SEEDS, as well as others, are especially grown for us by some of the most noted specialists, both on this continent and in Europe.

BETTER SEED AT ANY PRICE CANNOT BE HAD.

In Asters for general use the following are recommended: For EARLY, Queen of the Market; for MIDSUMMER, Victoria; for LATE, Carlson's Improved and Semple's Branching.



BRANCHING ASTER.

CARLSON'S IMPROVED. A selected strain of the Peony flowered type. The plants are very vigorous and remarkably free from disease. The finely formed cut flowers are full to the center, showing no yellow. They are always in demand on the market wherever shown.

	Trade pkt.	¼ oz.
Lavender, white, red, pink and mixed, each.....	\$.25	\$0.75
CALIFORNIA GIANT. "Silver Tipped," pink.....	.15	.30
"Silver Tipped," blue.....	.15	.30
CHRISTMAS TREE. Grown in a pot its peculiar branching habit gives it a novel form, mixed.....	.15	.30
COMET. Handsome and very distinct, with long, curled and twisted petals forming a large globe shaped flower borne on long stems.		
Giant, snow white.....	.15	.35
Giant, mixed.....	.15	.35
Pink, bordered white.....	.15	.35
Rose.....	.15	.35
Light Blue.....	.10	.20
CROWN or Cocardeau.....	.15	.30

Two Beautiful Asters, "Daybreak" and "Purity."

These two Asters are gems. Sturdy and robust in habit. Excellent for Cutting. Grow them side by side to get best effect.

DAYBREAK, Delicate Pink.....	\$.25	\$0.60
PURITY, Pure White.....	.25	1.00

DWARF BOUQUET (height 8 in.) white.....	\$.10	\$0.25
Crimson.....	.10	.25
Pink.....	.10	.25
Dark Blue.....	.10	.25
Mixed.....	.10	.25
DWARF QUEEN (height 10 in.) white.....	.20	.50
Crimson.....	.20	.50
JAPANESE or TASSEL.....	.15	.35
MIGNON, pure white.....	.20	.50
Mixed, splendid for cut flowers.....	.20	.50
OSTRICH FEATHER, Salmon Pink.....	.25	

This is one of the most beautiful Asters ever introduced. Height 18 in. Each plant bears a number of flowers. Blooms early. The flowers make a good substitute for chrysanthemums.

DAYBREAK

ASTER



TRUFFAUT'S PEONY FLOWERED.

Height 2 feet; stout and vigorous in growth; large double flowers of much beauty.

	Trade pkt.	¼ oz.		Trade pkt.	¼ oz.
White.....	\$.20	\$0.85	Light Blue.....	\$.20	\$0.35
Pink.....	.20	.35	Dark Blue.....	.20	.35
Blood Red.....	.20	.35	Blue, Tipped White.....	.20	.35
Crimson.....	.20	.35	Mixed.....	.15	.25

QUEEN OF THE MARKET.

Blooms **three weeks earlier** than other Asters. Beautiful flowers of large size and fine appearance, borne on stiff stems.

White.....	\$.10	\$0.20	Purple.....	\$.10	\$0.20
Pink.....	.10	.20	Light Blue.....	.10	.20
Crimson.....	.10	.20	Mixed.....	.10	.20

SEMPLÉ'S BRANCHING.

The flowers are borne on very long stems. The petals are long, broad and more or less twisted. **The best late Aster for cut flowers.**

White.....	\$.10	\$0.20	Crimson.....	\$.10	\$0.20
Pink.....	.10	.20	Purple.....	.10	.20
Lavender.....	.10	.20	Mixed.....	.10	.20

SNOWBALL or WHITE PRINCESS.....	.15	.45
TRIUMPH, Deep Scarlet, fine for pots.....	.20	.50

NEW ASTER, "Sunlight."

This Novelty is said to be a "truly yellow" Aster. Other so-called yellow Asters are not fully entitled to be so designated. "Sunlight" bears yellow flowers 3 to 4 inches across, on stalks about 18 inches high. **Trade pkt., 25c.**

IMPROVED VICTORIA.

Taken all in all, Victoria Asters are perhaps the most desirable of all for form, color and profusion of bloom. Height 18 in.

White.....	\$.20	\$0.35	Light Blue.....	\$.20	\$0.35
Rose.....	.20	.35	Dark Blue.....	.20	.35
Crimson.....	.20	.35	Mixed.....	.20	.35

VICK'S BRANCHING, White.....	.20	.50
Mixed colors.....	.20	.50
WALDERSEE, Dwarf, pink and white. Well suited for pot culture and bedding out.....	.25	

TALL ASTERS, Mixed.....	.10	.25
DWARF ASTERS, Mixed.....	.10	.25



CALCEOLARIA.

BALSAMS.

	Trade Pkt.	oz.
White Perfection. The best double, pure white Balsam for florists use.....	\$.15	\$1.00
Double, in separate colors, scarlet, rose, yellow, striped, and mixed, each.....	.10	.75
BALLOON VINE (<i>Cardiospermum</i>).....	.05	.15
BALSAM APPLE (<i>Mormordica</i>).....	.05	.15
BALSAM PEAR05	.15
BEGONIA.		
Single, tuberous rooted, mixed.....	.50	
Double.....	.50	
Rex (ornamental leaved).....	.50	
Erfordia, pink, fine bedding sort.....	.15	
Vernon, dark green leaves.....	.10	
" Dwarf, prized for bedding out.....	.15	
BELLIS. —(See Daisy.)		
BROWALLIA, mixed.....	.10	.30
Giant Flowered. (<i>Speciosa Major</i> .) This large flowered Browallia is one of the best for bedding out in summer and pot culture in winter. Bushy plants with rich indigo blue flowers.....	.25	

CALCEOLARIA.

We have obtained seed selected from plants whose flowers were large, rich and varied in color, spotted and blotched in many variations. The same grower who has supplied us for many years grew the strains offered.

- C. Hybrida grandiflora,** large flowered, Trade Pkt. 50c.
- " **Pumila,** dwarf growing..... " " 50c.
- Rugosa,** for bedding out, yellow..... " " 50c.

CALENDULA.

Meteor, rich orange.....	.05	.10
Prince of Orange, pale yellow.....	.05	.10
Mixed.....	.05	.10

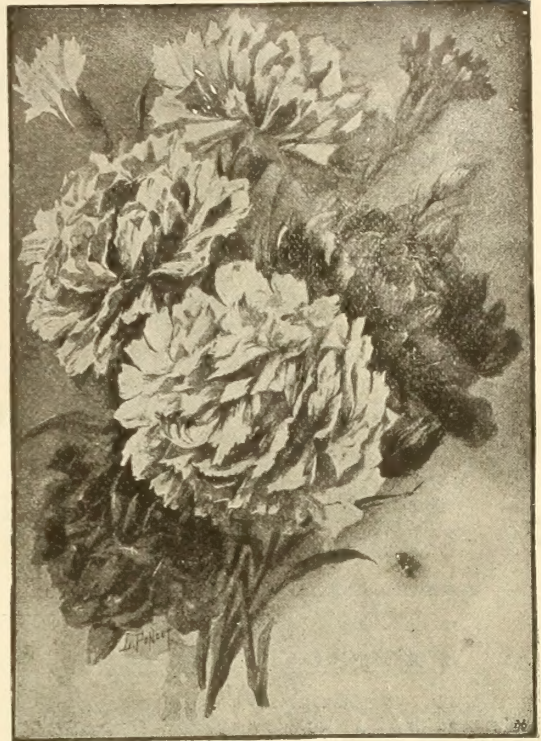
CALLIOPSIS or Coreopsis.

Drummondii (Golden Wave).....	.05	.15
Mixed.....	.05	.10
Lanceolata, fl. pl., yellow, perennial.....	.10	.50

CAMPANULA (Canterbury Bell).

Single, mixed.....	.05	.15
Double, mixed.....	.10	.50
Calycanthemum (Cup and Saucer) mixed.....	.10	.80

CANARY BIRD VINE05	.15
-------------------------------	-----	-----



CARNATIONS, "GIANTS OF NICE."

CANDYTUFT.

A Useful Flower for Bouquet Work.

	Trade Pkt.	oz.
White Rocket, tall grower.....	\$.05	.10
Empress, very large flowers.....	.10	.20
Tom Thumb, dwarf white.....	.05	.15
Carmine, crimson, purple, in separate colors.....	.05	.15
All kinds mixed.....	.05	.10
Sempervirens, perennial.....	.10	.50
CANNA (<i>Indian Shot</i>).		
Seed sown in March should produce plants that will flower during first summer.		
Large flowering French. This is selected seed which can be relied upon to produce beautiful flowers.....	.10	.15
American grown, tall and dwarf, mixed.....	.10	.15

CARNATIONS—"Giants of Nice."

A greatly improved Chaubaud Carnation because of the increased beauty and the large size of the flowers, borne upon long stalks in rich and varied colors. Another grand advantage this Carnation possesses is that it comes into flower six months after sowing. Trade Packet, 25c.

CARNATION, Double Perpetual or Chaubaud.....	.25
Riviera Market or Guillaud.....	.15
Early Dwarf Vienna10
" Grenadin, white or scarlet, either.....	.10
Margaret	¼ oz., 30c. .10
Margaret, white.....	.25
Giant Margaret, mixed.....	.25
Double Finest, mixed25
Barnard's Choice Mixture. This includes seeds of Carnations which bloom the first season after seed is sown.....	.10

CASTOR BEANS (*Ricinus*).

Zanzibarensis. 15 ft.; very large and dark leaves.....	.05	.10
Borboniensis Arboreus, tall grower.....	.05	.10
Sanguineus, dark leaves, red fruit.....	.05	.10
Gibsoni, 6 ft.; purple stem.....	.05	.10
All kinds mixed05	.10



CINERARIA GRANDIFLORA HYBRIDA.

NOTICE

For varieties not mentioned in this list, please refer to our general catalogue, mailed free for the asking.

We allow a discount of 33½ per cent. on

SEEDS IN PACKETS

from prices quoted in our Retail Catalogue.



CYCLAMEN—PERSICUM.

CELOSIA. (Cockscomb.)

"PRESIDENT THIERS"

Much used in public parks for bedding. The plant is dwarf in habit, has dark leaves and produces broad, stiff combs. Trade Packet, 25c.

OSTRICH FEATHER	Trade Pkt.	oz.
Bears closely set panicles of scarlet flowers.....	\$.15	
Triumph of the Exposition. Crimson, branching.....	.15	
Dwarf sorts, mixed.....	.10	\$.50

CENTAUREA.

Candidissima. (Dusty Miller).....	.25	1.00
Gymnocarpa. Stiff, silvery leaves.....	.15	.40
Cyanus. (Bachelor's Button).....	.05	.10
<i>Fl. Pl.</i> (Double Cornflower).....	.05	.15
Emperor William (Blue Cornflower).....	.05	.10
Victoria, deep blue, very dwarf.....	.10	.40

Imperialis. Mixed. A new and distinct type of Sweet Sultan, growing from three to four feet; high, with numerous large flowers borne upon long stems, in shades of color ranging through white, lilac, rose-pink and purple. The petals are finely fringed, producing a beautiful effect... .10 .50

Margaret. Pure white; sweet scented..... .10 .60

Odorata. Light blue, sweet scented..... .10

CHRYSANTHEMUM

Single, Annual, mixed.....	.05	.15
Double, Annual, mixed.....	.05	.15
Maximum Perfection. Large white flowers.....	.10	.40
Japanese Early Flowering.25	

CINERARIA.

Our strains of Cinerarias are from the most noted European growers. They are of acknowledged superiority. We can especially recommend our English-grown strain. Its product gives universal satisfaction.

	Trade Pkt.	oz.
Hybrida Grandiflora. Largest flowered English varieties. A prize-winning strain.....	.50	
Nana. Dwarf. Best German Seed.....	.50	
Plenissima. Double flowering Cinerarias in beautiful variety of colors.....	.50	
Maritima. White leaved, for bedding.....	.10	.20

CLEMATIS

Large flowering Hybrids, mixed.....	.25
-------------------------------------	-----

GLIANTHUS

Dampieri. (Glory Pea), scarlet and black.....	Trade Pkt.	oz.	\$.15
------------------------------------------------------	------------	-----	--------

COBÆA

Scandens. Purple.....	.10	\$.30
Scandens alba. White.....	.10	.70

COLEUS

Choice mixed, best quality.....	.10
Large, Variegated Hybrids. Mixed.....	.25

CONVOLVULUS, or Morning Glory.

Major. Tall, mixed.....	Lb., 35c.	.05	.10
Minor. Dwarf, mixed.....	Lb., 45c.	.05	.10
Mauritanicus. For hanging baskets; blue.....		.10	.50
Japanese Imperial. Mixed colors.....	Lb., \$.60	.05	.10
" " Best fringed.....	Lb., 1.50	.05	.15
" " Single, yellow.....	Lb., 2.00	.10	.20
Rochester. Light blue, white edge.....		.05	.10

COSMOS.

"Tints of Dawn." Early flowering; white, shaded rose.....	.05	.10
New Early Blooming, giant fancy, mixed.....	.10	.60
Giant Flowered, Fancy, separate colors, red, pink, white, orange and mixed, each.....	.10	.30
New Margaret. Large fringed flowers.....	.10	1.00

COWSLIP (Primula Veris.)

Yellow.....	.10
-------------	-----

CUPHEA

Platycentra. Bright scarlet.....	.10
-----------------------------------------	-----

GIANT FLOWERED CYCLAMEN.

Grown at the Imperial Gardens of Sans Souci, Germany. Seed saved from selected plants of beautiful colors.

Nothing hitherto sent out can match the enormous flowers of rare beauty, with frilled and curled edges, which are seen in the "Sans Souci" strain.

— COLORS —

White, Rose, Brown Red, Bright Red, and Mixed.
Per 100 Seeds, \$1.50

CYCLAMEN

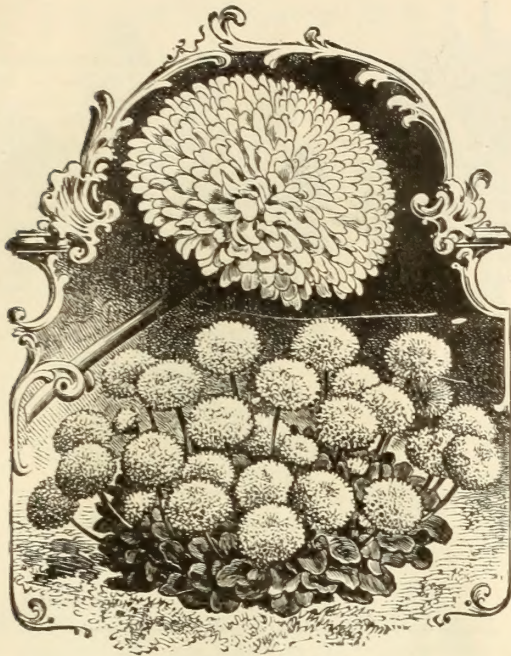
	Trade Pkt.	oz.
Persicum. Mixed, ¼ oz., 30c.....	\$.15	\$2.25

CYPERUS

Alternifolius. (Umbrella Plant).....	.25
---------------------------------------------	-----

CYPRESS VINE

Mixed colors.....	.05	.10
-------------------	-----	-----



DOUBLE DAISIES.



CHINA PINK.

	Trade Pkt.	oz.
DAHLIA		
Large Flowering Double.....	\$.25	\$1.50
Single Mixed.....	10	.35
DAISY		
Giant White.....	.25	
Giant Mixed.....	.25	
Double Mixed.....	.10	
Longfellow, Double Rose.....	.25	
Snowball, Double White.....	.25	
DATURA		
Cornucopia, Very large, sweet scented.....	.10	.50
Mixed Colors.....	.10	.25
DELPHINIUM, or LARKSPUR		
Dwarf Rocket, Mixed; 1 ft.....	.05	.10
Tall Rocket, Mixed, fine; 1½ ft.....	.05	.10
Emperor, Mixed.....	.05	.20
Hyacinth Flowered.....	.10	
Formosum, Dark Blue, tall.....	.10	.50
Pillar of Beauty, Sky Blue.....	.20	
Nudicaule, Scarlet.....	.15	
DIANTHUS, Pinks.		
DOUBLE FLOWERING PINKS.		
Chinensis, Mixed.....	.05	.20
Chinensis Albus, fl. pl. Double White.....	.05	.20
Heddewigii, fl. pl. Double Japan Pinks, Mixed..	.10	.50
Diadematus, Diadem Pink.....	.10	.60
Laciniatus, fl. pl. Fringed, Mixed.....	.10	.60
Imperialis, fl. pl. Imperial Pink.....	.05	.25
Double Pinks. All kinds, mixed.....	.05	.40
SINGLE FLOWERED PINKS.		
Fringed, (Laciniatus.).....	.05	.35
Japan, Striped and Spotted (Heddewigii).....	.10	.50
Crimson Belle, Dark Red.....	.10	.60
Eastern Queen, Rose.....	0	.60
The Bride, White, dwarf.....	.10	.60
PERENNIAL DIANTHUS.		
(Barbatus, see Sweet William.)		
Plumarius, Single (Pheasant's Eye).....	.05	.15
Plumarius, Double.....	.20	1.50
DIGITALIS, (Fox-Glove.)		
Mixed.....	.05	.15
DOLICHOS, or Hyacinth Bean.		
New Japanese, White Flowers.....	.05	.15
Mixed Colors.....	.05	.15
DRACENA		
Indivisa.....	.10	.25
Indivisa Lineata.....	.15	1.00
Australis.....	.15	1.00
DESEMETERIA—(Hen and Chickens.)		
DeSemetiana, For bedding, 100 seeds, 20c.....		

	Trade Pkt.	oz.
EDELWEISS		
Leontopodium Alpinum.....	\$.15	
ESCHSCHMOLTZIA		
Rose Cardinal.....	.05	.30
Mandarin, Single Scarlet and Orange.....	.05	.20
Mixed Colors, single.....	.05	.15
Mixed Colors, double.....	.05	.25
FEVERFEW		
Double White, (Matricaria).....	.05	.20
FORGET-ME-NOT—Myosotis		
Alpestris, Blue; 1 ft.....	.10	.40
Dissitiflora, A favorite with florists.....	.15	2.25
Palustris, (True.) Dark-blue.....	.15	1.50
Victoria, Sky-blue, yellow center.....	.10	1.00
Mixed, all colors.....	.10	1.00
FOUR O'CLOCK—(Mirabilis.)		
Mixed.....	.05	.10
GAILLARDIA—Blanket Flower.		
Single, Mixed choice varieties.....	.05	.15
Picta Lorenziana, New Double Gaillardia.....	.10	.20
Grandiflora Superba, Perennial.....	.10	.25
GERANIUM		
Zonale, Mixed.....	.10	.50
Apple Scented, 1,000 seeds, \$1.50.....	.25	
GILIA		
Mixed Colors, Choice.....	.05	.10
GLOXINIA HYBRIDA		
We have again seed from the same specialist, who has supplied us for many years. The strain is fully equal to any, no matter by what name called.		
Splendid Mixture of the finest colors.....	.35	
Defiance, Large scarlet flowers.....	.35	
GODETIA		
Finest Mixed.....	.05	.15
GOMPHRENA—Everlasting.		
Fine Mixed Colors.....	.05	.15
GOURDS		
Ornamental Mixed.....	.05	.10
GREVILLEA		
Robusta, (Silk Oak).....	.10	.40
GYPSOPHILA		
Elegans, For bouquets, White.....	.05	.10
Paniculata, White, good for cut flowers.....	.05	.10

CASH DISCOUNT. On Flower Seeds we allow 10 per cent for cash with order.



MARIGOLD, EL DORADO.



ICE PLANT.



MIGNONETTE, MACHET.

HELIANTHUS—Sunflower.		Trade Pkt.	oz.
Miniature. Dwarf, single.....		\$0.65	\$0.10
Globosus Fistulosus. Large, double.....		.05	.10
Multiflorus.....		.05	.20
HELICHRYSUM (everlasting), mixed.....		.05	.25
HELIOTROPE			
Dark sorts, mixed.....		.10	1.50
Mammoth flowered.....		.20	1.00
Finest mixed.....		.10	1.00

HOLLYHOCK.

We offer an excellent strain, which produces large, very double flowers.

Trade Pkt.	½ oz.	Pink	Trade Pkt.	½ oz.
White.....	\$.10 \$.75	Yellow.....	.10	\$.75
Crimson.....	.10 .75	Yellow.....	.10	.75
Salmon.....	.10 .75	Maroon.....	.10	.75
Double Hollyhocks, mixed.....			.10	.40

EVERLASTING ALLEGHENY HOLLYHOCKS.

This new variety blooms the first year from seed, the flowers are decidedly different than those of the old type. They are 4 to 5 inches in diameter, double and semi-double, fringed and curled. Trade Pkt. \$0.15 oz. \$1.25

CHATER'S PRIZE HOLLYHOCKS.

Seed saved from selected flowers. Ten or more colors included in the mixed strain; famous for large, very beautiful flowers.....	Trade Pkt.	oz.
		.15

HUMULUS (Japanese Hop.)		Trade Pkt.	oz.
Japonicus, green leaves.....		.05	.25
Japonicus Fol. var., variegated foliage.....		.10	.40

IPOMOEA (Moonflower).		Trade Pkt.	oz.
New Hybrid. Blooms early; black seed.....		.10	.50
Heavenly Blue, large, sky-blue flowers.....		.15	1.00

(See also Convolvulus.)

LANTANA		Trade Pkt.	oz.
Finest mixed.....		.10	.25

LARKSPUR (See Delphinium.)		Trade Pkt.	oz.
Mixed. (Everlasting Sweet Pea).....		.05	.10

LEMON VERBENA		Trade Pkt.	oz.
Comes readily from seed.....		.10	1.25

LINUM		Trade Pkt.	oz.
Grandiflorum Rubrum. Brilliant scarlet.....		.05	.10

LOPHOSPERMUM		Trade Pkt.	oz.
Scandens.....		.20	\$1.50

LUPINUS		Trade Pkt.	oz.
Tall varieties. Mixed.....		.05	.10
Dwarf varieties. Mixed.....		.05	.10

ICE PLANT		Trade Pkt.	oz.
Crystallinum.....		\$.05	.15
IMPATIENS			
Sultana, fine for pots.....		.25	
Sultana Hybrida, finest varieties mixed.....		.25	
KENILWORTH IVY			
One of the finest plants for hanging baskets or out of doors on rock work.....			
		.15	

LOBELIA.

LOBELIA.		Trade Pkt.	oz.
Alba. Pure white.....		\$0.10	\$0.65
Prima Donna. Dark red.....		.20	
Speciosa. Dark foliage, blue.....		.10	.50
Barnard's Perpetual. Blue, with white eye.....		.20	1.00
Crystal Palace Compacta. Dark blue.....		.15	1.00
Emperor William. Blue, dwarf.....		.15	1.00
White Gem.....		.10	.75
Mixed, all colors.....		.10	.50
Queen Victoria (perennial), scarlet.....		.20	

LYCHNIS. Chalcedonica, Scarlet.....		.10	.25
--------------------------------------------	--	-----	-----

MARIGOLD (Tagetes.)		Trade Pkt.	oz.
African. Tall, double, mixed.....		.05	.15
El Dorado. Double, extra large.....		.05	.15
Lemon Queen.....		.05	.20
French. Dwarf, mixed.....		.05	.15
Legion of Honor.....		.05	.20
Gold striped.....		.05	.20

MATRICARIA (See Feverfew.)			
-----------------------------------	--	--	--

MAURANDIA. Mixed.....	¼ oz., 40c.	.15	
------------------------------	-------------	-----	--

MIGNONETTE.

Gabriele, large and sweet.....		.10	.30
Large Flowering (Grandiflora).....	lb., 40c.	.05	.10
Golden Queen.....		.05	.20
Golden Machet. Best French strain.....		.10	.50
Victoria. New, red.....		.10	.30
Many kinds, mixed.....		.05	.15

MIGNONETTE. Machet.

The flower spikes are long and broad and the red blooms extremely fragrant. It is one of the best for pot culture and bedding. Oz., 50c. Trade Pkt., 10c.

MIMOSA PUDICA. Sensitive Plant.....		.10	.30
--------------------------------------------	--	-----	-----

MIMULUS TIGRINUS		Trade Pkt.	oz.
Monkey Flower.....		.10	
Moschatus (Musk Plant).....	½ oz., 25c.	.10	

MUSA ENSETE (Abyssinian Banana).		Trade Pkt.	oz.
This is a grand tropical plant for lawn decoration during the summer; the plants can be wintered over in a cool greenhouse, and will grow to enormous size the second and third seasons.			
Per 100 seeds, \$1.00; 15 seeds for 25c.			

MYOSOTIS. (See Forget-Me-Not.)			
---------------------------------------	--	--	--

NICOTIANA. (Tobacco Plant.)		Trade Pkt.	oz.
Affinis. White flowers, fragrant.....		.05	.25
Sylvestris. A new, very strong growing variety, suitable for bedding out.....		.10	.50

NIGELLA			
Mixed.....		.05	.10

NIEREMBERGIA Gracilis.....		.10	.50
-----------------------------------	--	-----	-----

NASTURTIUMS.

TALL SORTS—(Tropaeolum Majus).

	Oz.	$\frac{1}{4}$ lb.	lb.
Atropurpureum. Velvety crimson.....	\$ 10	.15	.50
Chameleon. Different colors on one plant	10	.15	.50
Coccineum. Scarlet.....	10	.15	.50
Dunnett's Orange. Orange and red.....	10	.15	.50
Edward Otto. Light brown; yellow spur.....	10	.15	.50
Heinemanni. Chocolate.....	10	.15	.50
Hemisphericum. Yellow and pink.....	10	.15	.50
King Theodore. Crimson; dark foliage.....	10	.25	.80
Pearl. Creamy white.....	10	.15	.50
Regalianum. Purple violet.....	10	.15	.50
Scheuerianum. Straw color; spotted.....	10	.15	.50
Schillingii. Yellow and red.....	10	.15	.50
Sunlight. Rich golden yellow; a gem.....	10	.30	1 00
Von Moltke. Rose.....	10	.15	.60
Barnard's Special Mixture of Tall Nasturtiums. Named varieties.....	10	.15	.50
Tall, mixed, excellent value.....	.05	.12	.35

LOBB'S NASTURTIUMS.

Tropaeolum Lobbianum.

	Trade Pkt.	oz.	lb.
Cardinale, dark, cardinal red; superb.....	\$ 10	.20	.85
Giant of Battles, sulphur, spotted with red.....	10	.20	.85
Lucifer, very dark scarlet.....	10	.20	.85
Napoleon III., golden striped carmine.....	10	.20	.85
King of the Blacks, black-brown.....	10	.20	.85
Spitfire, brilliant scarlet.....	10	.20	.85
Mixed, all colors.....	10	.15	.70

	Trade Pkt.	oz.
PANSY. Named and mixed. See next page.		
PASSIFLORA (Passion Flower). Mixed.....	\$.10	.75
OENOTHERA (Evening Primrose). Mixed annual varieties.....	.05	.15
PENNISETUM (Feather Grass). Purple.....	.10	.50
PENTSTEMON (Large Flowered). Mixed.....	.20	
PERILLA. Nankinensis, mulberry foliage.....	.05	.15



"HYBRIDS OF MAD. GUNTER."

These are distinguished by dark colored foliage and richly colored flowers..... .10 .20 .60



.. NEW STAR PETUNIAS ..

THIS new strain of Petunias is the result of many years of hard work in the way of improvement. The plants branch freely and bloom most profusely. The flowers are dark maroon in color, each one distinctly marked with a five-point star. Considered one of the best new things of recent introduction. Trade Pkt. (150 seeds), 25c.

PETUNIAS.

	Trade Pkt.	oz.
SINGLE, fine mixed.....	\$.10	.30
Inimitable, dwarf, for pots.....	.15	2.00
Blotched and striped10	.75
Snowball, excellent for pots or bedding.....	.15	
Adonis, carmine, taller than Snowball.....	.15	
Large Flowering, Giants of California.....	.50	
Grandiflora Fimbriata, fringed.....	.50	
" Superbissima, very fine strain.....	.50	
" Single mixed, splendid flowers.....	.50	
DOUBLE Liliput50	
Dwarf Inimitable50	
Fringed, large fine flowers.....	.50	
Pure White (Lily of the Lake), the very best.....	.50	
Barnard's Double Mixed Petunias50	

DWARF SORTS. (Tropaeolum Tom Thumb.)

Aurora. Chrome yellow.....	10	.20	.60
Beauty. Scarlet, splashed canary.....	10	.20	.60
Cloth of Gold. Foliage yellow, scarlet.....	10	.20	.70
Cœruleum roseum. Cherry red.....	10	.20	.70
Crystal Palace Gem. Sulphur.....	10	.20	.60
Empress of India. Crimson; dark leaves.....	10	.20	.80
Golden King. Yellow; dark foliage.....	10	.20	.80
King of Tom Thumbs. Scarlet; dark.....	10	.20	.80
King Theodore. Maroon.....	10	.20	.80
Lady-Bird. Golden yellow.....	10	.20	.80
Liliput. Both flowers and plants are smaller than those of Tom Thumb Nasturtiums. We offer crimson, scarlet, spotted and mixed, each, Trade pkt., 15c.			
Pearl. Creamy white.....	10	.20	.60
Prince Henry. White and red.....	10	.20	.60
Rose. Soft, pleasing color.....	10	.20	.60
Ruby King. Ruby rose; dark.....	10	.25	.85
Scarlet, Spotted, Yellow, each.....	10	.20	.60
Barnard's Special Mixture of Dwarf Nasturtiums. Named varieties.....	10	.20	.60
Dwarf Mixed. A fine collection.....	.05	.15	.45

PANSIES—Named Sorts and in Mixtures.

NOTHING in the way of Flower Seeds for Florists receives at our hands a greater amount of attention than Pansies.

We are ever on the alert to add valuable new varieties to our stock, searching the markets of the world in our effort to discover them. The list below has been made up with much care. It is believed to contain almost every desirable strain brought out previous to 1901.

WE can best describe this as a combination of seeds of the best named Pansies, secured by us from leading specialists both at home and abroad. In the many years we **BARNARD'S Florists' Mixture** have supplied this "FLORISTS' of PANSIES. MIXTURE," so far as we are aware, it has never failed to prove satisfactory. Our aim is to furnish the best obtainable and to that end no expense is spared. Trade Pkt., 25c; ½ oz., \$1.00; ¼ oz., \$3.75; oz., \$7.00.

GIANT FLOWERED PANSIES.

It is poor economy to expect the best results from any other than high grade seeds. We have secured an extra fine quality of Giant Pansy Seed from which, we feel certain, most satisfactory flowers will be obtained.

	Trade Pkt.	¼ oz.	oz.
Giant Auricula colors, dark and velvety.....	\$0.10	\$0.25	\$1.50
" Aurora, pure white10	.25	1.50
" Azure blue, beautiful shade.....	.10	.25	1.50
" Bugnot, a splendid strain, having large, round flowers richly marked; unexcelled20	.50	3.50
" Cassier, three to five blotched, showy and handsome. We offer a strain of superior quality20	.60	4.00
" Coal Black, a fine, very dark variety....	.10	.20	1.00
" Emperor William, ultramarine.....	.10	.30	2.00
" Fiery Faces, scarlet, gold edge, yellow center.....	.20	.75	5.50
" Five Spotted, petals marked and blotched; superb.....	.50	2.00	
" Freya, purple, margined with white....	.10	.25	1.75
" Lord Beaconsfield, lavender, violet and purple10	.20	1.20
" Odier, a showy and richly colored strain with very large blotched flowers20	.50	4.00
" Parisian, large, striped flowers.....	.10	.25	1.60
" President Carnot, violet blotch on white ground15	.35	2.25
" President McKinley, deep yellow, violet blotched20	.75	
" Purple, rich and velvety.....	.10	.20	1.25
" Snowflake, pure white.....	.10	.25	1.60
" Spotted White, white, dark blotch....	.10	.25	1.50
" Striped, brightly striped and streaked.10	.25	1.50
" Yellow, dark center.....	.10	.25	1.50
" Yellow Gem, clear yellow.....	.10	.25	1.50
" Violet blue, a pleasing combination....	.10	.25	1.50
" Trimardeau, Improved, remarkable for the immense size of the flowers, most of which are blotched and spotted....	.10	.20	1.25

SUPERB MIXTURE of giant strains of Cassier, Odier, Bugnot and Trimardeau, valued by many experienced pansy growers as one of the finest mixtures ever made up. Trade Pkt., 20c; ½ oz., 75c; oz., \$5.00.

Giant Pansy Mixture.

In this mixture, prepared by ourselves, are included not only seeds of all the Giant Flowered Pansies above named but also other large flowered sorts not otherwise obtainable. Trade Pkt., 20c; ½ oz., 50c; ¼ oz., \$2.00; oz., \$4.00



PANSY "MASTERPIECE."

VARIOUS NAMED PANSIES.

NEW GIANT CURLED PANSY, "MASTERPIECE." The nearest approach thus far to a double pansy. Petals curled and twisted. Very large flowers more or less blotched and in combinations of color. Trade Pkt., 25c.

FAIRY QUEEN. Sky blue, margined with silvery white. Trade Pkt., 10c.; ¼ oz., 30c.; oz., \$1.00.

HORTENSIA. Light and dark rose-colored, blotched flowers of giant size. Trade Pkt., 20c; ¼ oz., 50c; oz., \$3.50.

COQUETTE DE POISSY. Slate or mouse-colored flowers of good size and form. Trade Pkt., 10c; ¼ oz., 20c; oz., \$1.00.

NEW GIANT PANSY, "Madame Perret"

A novelty of the first rank. Flowers from 3 to 3½ inches in diameter. The colors range through all the shades of red, from pink to an occasional bright red edged with white. Trade Packet, 50c.

PRIZE PANSIES.

Unequaled by any for bedding out.

Any of the following: Trade Pkt., 10c; 11 pkts., \$1.00.

	¼ oz.	oz.	¼ oz.	oz.
Azure Blue.....	\$0.25	\$0.80	Havana Brown.....	\$0.25 \$0.80
Black (Faust's King of Blacks), very dark.....	.25	.80	Light Blue.....	.25 .80
Black and crimson.....	.25	.80	Lord Beaconsfield.	.25 .80
Bronze.....	.25	.80	Mahogany colors.....	.25 .80
Brown shades.....	.25	.80	Mottled and striped.....	.30 1.00
Cardinal , scarlet....	.50	1.20	Peacock , blue, edged white.....	.50 1.50
Dark Purple , rich... ..	.30	1.00	Prince Bismarck , bronze and yellow.....	.25 .80
Emperor Frederick.....	.25	.80	Purple, white edge.....	.25 .80
Emp. Wm. , ultramarine25	.80	Quadricolor.....	.25 .80
English Face25	.80	Silver Edge, dark purple, edged white.....	.25 .80
Fire King , yellow... ..	.25	.80	Victoria, rich red... ..	.35 1.25
Golden Gem , pure yellow25	.80	Violet Blue.....	.25 .80
Gold Margined.....	.25	.80		

PRIZE PANSIES, mixed, all the above and others in proper proportion of colors. Trade Pkt., 10c; ¼ oz., 30c; oz., \$1.00.

PANSY SEED—A good mixture of many colors and shades. Oz., 50c; 5 oz. for \$2.00.



PRIMULA OBCONICA GRANDIFLORA.



SALVIA SPLENDENS "SILVERSPOT."



PRIMULA FORBESI.

PHLOX.

	Trade Pkt.	oz.
Drummond, finest mixed	\$0 10	\$0 30
Star of Quedlinburg (<i>Cuspidata</i>). Star shaped flowers, colors mixed	.10	.60
Grandiflora, pure white	.10	.70
" scarlet	.10	.70
" rosy carmine	.10	.70
" chamois rose	.15	.70
" carmine red eye	.10	.70
" blood red	.10	.70
" mixed	.10	.50

Nana Compacta. Height, 6 to 9 inches.

	Trade Pkt.	oz.	Trade Pkt.	oz.
White	\$.25	\$1.75	Rose	\$.25 \$1.75
Red	.25	1.75	Blood red	.25 1.75
Blush rose	.25	1.75	All colors mixed	.25 1.50

Double, white, scarlet or mixed. Each	.25
Decussata, perennial, mixed colors	.10 .70
Barnard's Phlox Mixture, includes the best	.15 .75

POPPY, or PAPAVER.

Single, mixed, annual	.05	.10
Shirley, a favorite for cut flowers	.05	.25
Tulip, brilliant scarlet	.10	.50
Miss Sherwood, satiny white (novelty)	.20	
Double, mixed, annual	.05	.10
American Flag, white with orange scarlet	.10	.50
Cardinal, scarlet	.05	.15
Carnation-flowered, very showy	.05	.10
Pæony-flowered, mixed colors	.05	.10
Snowdrift, white, true	.10	.60
White Swan, large, pure white	.05	.20
Perennial, Iceland, mixed colors	.10	
Oriental, bright crimson	.10	.75

PORTULACA.

Single, finest mixed	.05	.30
Double, extra fine mixed	.25	2.25

PRIMULA SINENSIS FIMBRIATA.

Our Primula Seeds are from the most noted growers of England and Europe.

SINGLE FRINGED VARIETIES.

Any of the following at 50c per Trade Packet:	
Alba, pure white.	Coerulea, blue.
Alba Magnifica, white with yellow eye.	Kermesina Splendens, carmine, large yellow eye.
Chiswick Red, bright crimson scarlet.	Peach blossom.
Coccinea, bright red.	Rose. Red. Mixed.

	Trade Pkt.	oz.
Filicifolia (Fern-leaved), mixed	\$0.50
Gigantea (Giant-flowered), mixed50

DOUBLE FRINGED VARIETIES.

Any of the following at 50c per Trade Packet:			
White.	Red.	Rose.	Mixed.

PRIMULA, Hardy Sorts.

	Trade Pkt.	oz.
Auricula, mixed colors	\$0 25
Forbesi, the Baby Primrose. It is one of the best money-making plants. Blooms in three months after sowing; color: rosy lilac.25
Japonica (Japan Primrose), mixed25
Obconica grandiflora, large flowers25
" " fimbriata, fringed25
Veris (Polyanthus), mixed15

PYRETHRUM.

Aureum (Golden Feather)05 \$0.30
Giant-Flowered (<i>Roseum Hybridum Grandiflorum</i>). The extremely large ray-shaped flowers are borne upon long stalks and are valuable for cutting. The blooms are much like those of Cosmos. Mixed colors, including white, pink, crimson, etc.25
Golden Gem10
Selaginoides (Fern-leaved)15
RHODANTHE (Everlasting), mixed10 60
RICINUS. See Castor Beans.		

RUDBECKIA.

bicolor superba, fine cut flower10 50
SALPIGLOSSIS, large flowered05 30

SALVIA (Flowering Sage).

Splendens, bright scarlet25 1 25
" Clara Bedman, early; scarlet25
" Drooping Spikes, bright red15
" Silver Spot, rich green leaves, spotted with yellow; flowers scarlet25
Argentea, silver white foliage05 15
Patens, blue25

SCABIOSA (Mourning Bride).

A splendid cut flower for bouquets, etc.		
Tall, double mixed05 20
Dwarf, double mixed05 15
" golden yellow05 15
Snowball, white, 18 inches05 25
Caucasica, lavender, 2 to 3 feet15 1 75

SEDUM, Coeruleum (Stone Crop)25
SMILAX (new crop) ¼ lb.,	.75 .10 25

SOLANUM. Capiscastrum.

This shrub, better known as Jerusalem Cherry, is much valued for decorative purposes. Always clothed in deep green leaves, it annually produces a crop of round, scarlet fruit.

STEVIA. Serrata.

Fragrant, flesh-colored flowers borne in great quantity. An excellent cut flower. Many florists find the growing of Stevia in the early winter months a profitable undertaking. It yields with very little care large quantities of fragrant, flesh-colored flowers.



AMERICA.



RAMONA.



GORGEOUS

Sweet Peas

AT NO TIME heretofore have we been so fortunate as to be able to offer such a grand array of **New and Selected Sweet Peas**. Every one in the entire collection is worthy of cultivation. Those marked with a star (*) are the best of their color and type. In compiling the list below we have discarded some sorts well known to the trade and brought into it improved varieties including all the best new ones of 1901.

☞ To following prices add 8c per lb. if to be forwarded by mail.

	Oz.	¼ Lb.	Lb.		Oz.	¼ Lb.	Lb.
*America. White, striped with scarlet.....	5	10	30	Juanita. White striped lavender.....	5	10	30
Appleblossom. Bright rose and pink.....	5	10	30	*Katherine Tracy. A lovely pink.....	5	15	35
Aurora. Salmon on white.....	5	10	30	Lady Nina Balfour. Delicate mauve.....	5	15	35
Black Knight. Dark Maroon.....	5	10	30	*Lady Grisel Hamilton. Lavender. The best	5	15	35
*Blanche Burpee. Pure white, very large....	5	10	30	Lady Mary. Bright orange pink.....	5	10	30
*Blanche Ferry. Pink and white.....	5	10	25	Lady Penzance. Orange rose. Fine.....	5	10	30
* " " Extra early, 10 days earlier	5	10	30	Little Dorrit. Pink, wings white.....	5	10	30
Blushing Beauty. Delicate, soft pink.....	5	10	27	*Lottie Eckford. White, edged with blue...	5	10	30
Boreatton. Dark maroon.....	5	10	30	*Lottie Hutchins. Pink on cream.....	5	10	30
Brilliant. Bright scarlet.....	5	10	30	Lovely. A splendid pink.....	5	10	30
Captain of the Blues. Purple and blue....	5	10	30	*Maid of Honor. Blue on white.....	5	10	28
Captivation. Claret color.....	5	10	30	Mars. Fiery crimson.....	5	10	28
Celestial. Lavender blue.....	5	10	30	Meteor. Orange pink.....	5	10	30
*Chancellor. Rich rosy orange.....	5	10	30	Modesty. Delicate pink.....	5	10	30
*Colonist. Lilac overlaid with rose.....	5	15	35	Monarch. Crimson and blue.....	5	10	28
Columbia. Red, white and blue.....	5	15	35	Mrs. Joseph Chamberlain. Striped bright			
*Coquette. Primrose yellow.....	5	10	28	rose on white.....	5	10	30
*Countess Cadogan. Violet and blue.....	5	15	35	*Mrs. Dugdale. Crimson and rose.....	5	15	35
Countess of Powis. Orange and purple....	5	10	30	*Mrs. Eckford. Primrose yellow.....	5	10	30
*Countess of Radnor. Pale mauve.....	5	10	28	Mrs. Gladstone. Soft, rosy pink.....	5	15	35
Crown Jewel. Yellow veined with rose....	5	10	28	Mrs. Sankey. A good white.....	5	15	35
Cupid. Dwarf, white.....	5	15	40	*Navy Blue. Deep violet blue.....	5	15	35
Cupid. Dwarf, pink.....	5	15	40	*New Countess. Light lavender.....	5	15	35
Cupid. Mixed.....	5	15	40	Orange Prince. Orange pink. Lovely.....	5	15	35
Daybreak. Scarlet on white ground.....	5	10	30	*Othello. Chocolate red.....	5	15	40
Dorothy Tennant. Rosy mauve. Fine.....	5	10	30	*Ovid. Rose pink.....	5	10	30
Duke of Clarence. Claret color.....	5	10	30	*Pink Friar. Carmine rose.....	5	15	35
*Duke of Westminster. Violet purple.....	5	15	35	*Prima Donna. Soft rose pink.....	5	15	28
*Earliest of All. Pink and white.....	5	15	35	*Princess of Wales. Stripe mauve on white	5	10	30
*Emily Eckford. Light mauve.....	5	10	28	Ramona. White, splashed with pink.....	5	10	30
Emily Henderson. Purest white. Early...	5	10	28	Red Riding Hood. An odd-shaped flower..	5	10	30
Emily Lynch. Rose pink.....	5	10	30	*Royal Rose. Deep rosy pink.....	5	15	35
Fairy Queen. White shaded rose.....	5	15	35	*Sadie Burpee. The new large white.....	5	15	35
Fircity. Deep fiery scarlet.....	5	10	28	*Salopian. Fine scarlet.....	5	10	30
Gaiety. Striped crimson on white.....	5	10	28	Sensation. White with faint blush.....	5	15	35
Golden Gate. Lavender and pink.....	5	10	30	Shahzada. Dark maroon.....	5	15	30
*Golden Gleam. Primrose yellow.....	5	10	30	*Stanley. Rich purple.....	5	10	28
Gorgeous. Orange scarlet.....	10	20	50	Stella Morse. Primrose flushed with pink..	5	10	30
Gray Friar. Purple on white ground.....	5	10	28	Triumph. Orange pink.....	5	10	30
*Her Majesty. Clear deep rose.....	5	15	35	*Venus. Salmon buff. Shaded pink.....	5	10	30
Hon. F. Bouverie. Fine coral pink.....	5	10	30				

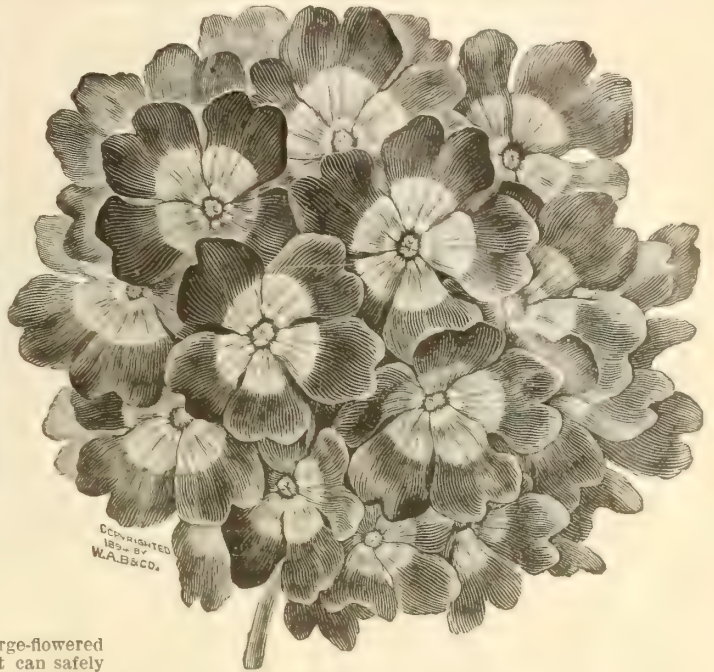
* * *
SWEET PEAS,
 IN MIXTURE.
 * * *

Barnard's Royal Mixture,
 A combination of the newest, largest
 flowered and most beautiful Sweet
 Peas, all selected, named varieties.
 Oz. 5c., ¼ lb. 15c., lb. 35c.

Mixture of Light Colors.....	5	10	30
Extra Choice Mixture.....	5	10	28
Good Mixture.....	5	10	25
Double Sweet Peas, Mixed....	5	15	35



SWEET WILLIAM.



MAMMOTH VERBENA.

STOCKS.

Our seed of Stocks for florists is saved from large-flowered double varieties, cultivated exclusively in pots. It can safely be expected to produce a high percentage of double flowers.

Large-Flowering Dwarf Ten-Week Stock.

These are favorites both for culture in pots and growing in large beds out of doors. *German-grown seed.*

	Trade Pkt.	Oz.		Trade Pkt.	Oz.
Rose	\$0.25	\$2.50	Crimson	\$0.25	\$2.50
Pure White25	2.50	Canary25	2.50
Light Blue25	2.50	Purple25	2.50
Blood Red25	2.50	Mixed25	2.00

One packet each of seven separate colors for \$1.50

Dwarf-Forcing Ten-Week Stock, Snowflake.

A wall-flower leaved variety, the earliest of the Whites; excellent for forcing. Produces large spikes of snow-white flowers. 1/4 oz., \$1.00 .25
 Wall-flower, leaved, mixed.25

PERPETUAL OR BRANCHING STOCK.

Cut-and-Come-Again. *Princess Alice or White Perfection.* This is a valuable variety for cutting; every shoot produces a large spike of double, pure white flowers. Ours is the **extra giant strain**, 1/4 oz., \$1.25.25
Intermediate (Autumnal), mixed.25
Brompton, winter or biennial, mixed.25

SWEET SULTAN.—See Centaurea Imperialis.
SWEET WILLIAM (*Dianthus Barbatus*).

Single, mixed05	10
Double, giant flowered strain10	.50

THUNBERGIA, mixed colors.10 .60

TROPÆOLUM.—See Lobb's Nasturtium.

TORENIA.
 Fournieri, sky blue, dotted with deep indigo. 25
 " Compacta, porcelain-blue. 25
 White Wings, pure white. 25

VERBENA HYBRIDA.

A very select strain of seed which brings handsome and beautiful flowers, not, however, equal in size to the mammoth strain.

	Trade Pkt.	Oz.		Trade Pkt.	Oz.
Auriculiflora ..	\$0.15	\$0.75	Striped	\$0.15	\$0.75
Blue15	.75	Scarlet, bright..	.15	.75
Purple15	.75	White, pure15	.75
Pink25	1.25	Mixed15	.60

Mammoth. We offer this in mixed colors only. The flowers are much larger than ordinary verbenas, the colors are rich and distinct. 25 1.00

DWARF BEDDING VERBENA.

This sort grows only about six inches high; but shows nothing of a trailing habit. It is recommended for bedding. \$0.25 1.50

LEMON VERBENA, fragrant leaves. 10 1.25

VINCA.

Rose, fine shade of rose.10 .60
 " Alba, white, rose center.10 .60
 " Alba pura, pure white.10 .60

VIOLA.

Single, blue.10
 Single, white.10

WALLFLOWER.

Single, best mixed.10 .30
 Double, best mixed.25

ZINNIA.

Giant flowered, mixed.10 .40
 Crested and Curled.10 .40
 Zebra beautiful striped flowers.10 .40
 Double Mexican.10 .35

Large-Flowering Dwarf Double Zinnias.

	Trade Pkt.	Oz.		Trade Pkt.	Oz.
White	\$0.10	\$0.35	Canary	\$0.10	\$0.35
Scarlet10	.35	Crimson10	.35
Orange10	.35	Mixed10	.25

The Latest Floral Wonder.

SHASTA DAISY.

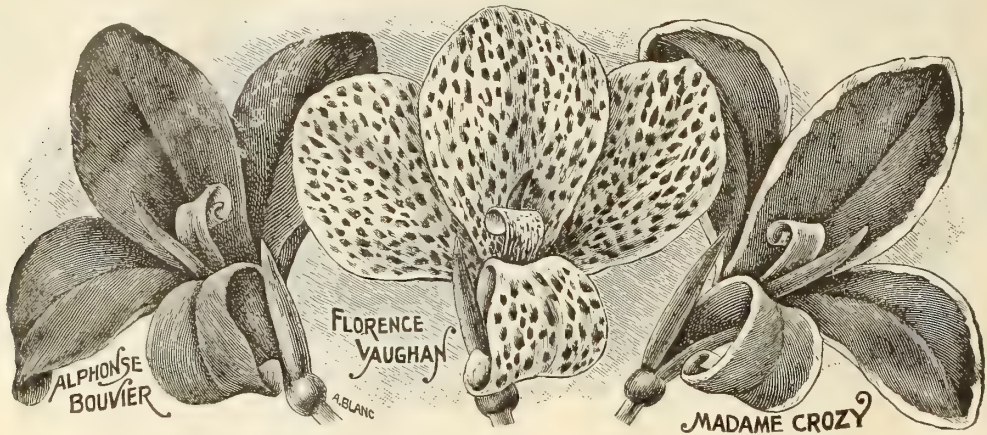
(*Chrysanthemum Leucanthemum Hybridum.*)

A **MAGNIFICENT** hardy perennial of the easiest culture. The seeds should be sown early. Bears flowers of the purest white, each averaging a foot or more in diameter on long wiry stems. The cut flowers remain fresh and in good condition for two weeks. Trade pkt., 50c.

PEPPER, Improved Celestial. Now largely grown as a pot plant for its fruits in many colors, especially for the Christmas trade. Trade pkt., 20c.

BULBS FOR SPRING PLANTING.

For the coming season we are better prepared than ever to supply first-class, well-cured bulbs, the best the market affords. We invite the custom of those who appreciate our endeavors to supply best stock.



AMARYLLIS. Per doz. Per 100

Atamasco Rosea, pink.....	\$0.40	\$ 2.50
Formosissima, (Jacobean Lily). This forces readily, its rich velvety crimson flowers appear before the leaves.....	.65	4 00
Johnsoni, large flower, crimson striped with white. Select bulbs.....	2 75	20.00

TUBEROUS-ROOTED BEGONIAS.

We have used our best efforts to secure bulbs of the finest quality which produce large flowers, enabling the florist to dispose of his plants in bloom at profitable prices.

Our stock of Tuberous-Rooted Begonias are large in size, well ripened and first-class in every respect. In our mixtures are included the best and most improved varieties only.

	Per doz.	Per 100
Single varieties in separate colors: white, yellow, scarlet, pink, crimson.....	\$0.45	\$ 3.00
Single varieties, mixed.....	.40	2.75
Double varieties, in separate colors: white, yellow, scarlet, pink.....	.70	5.00
Double varieties, mixed.....	.65	4.75

BLEEDING HEART.

(<i>Dielytra Spectabilis</i> .) A well known favorite for forcing.....	1.00	7.00
-------------------------------------------------------------------------	------	------

CALADIUM ESCULENTUM.

The bulbs we offer are grown especially for our trade; they are in prime condition, solid and firm, and have good live center shoots.

	Per doz.	Per 100
5 to 7 inches in circumference.....	\$0.45	\$ 3.00
6 to 8 " " ".....	.50	3.50
7 to 9 " " ".....	.65	4.25
8 to 11 " " ".....	.80	5.75
9 to 12 " " ".....	.95	7.00
12 and up " " ".....	1 85	14.00
CALLA, SPOTTED (<i>Richardia Maculata</i>).....	.50	3.00

CINNAMON VINE. A very salable climber leaves and white, fragrant flowers. Dark green	Per doz.	Per 100
First size, 6 to 10 inches.....	\$0.50	\$3.00
Second size, 3 to 6 inches.....	.45	2.25

CYCAS REVOLUTA.

The True Long-Leaved Sago Palm.

Imported, dormant stems, weighing from three pounds each and upwards. 100 lbs., \$9.00; original case lots (320 lbs. each), at \$8.00 per 100 lbs.

CANNAS.

Dormant Tubers with two or three eyes each.

	Per doz.	Per 100
Alphonse Bouvier, 6 ft., crimson.....	\$0.60	\$ 4.00
Alsace, 4½ ft., nearly white.....	.60	4 00
Austria, 6 ft., canary yellow, spotted red.....	.50	3 50
Black Beauty, leaves bronze purple, shaded with black.....	1.60	12.00
Burbank, 5 to 6 ft., clear canary yellow.....	.50	3.50
Chas. Henderson, 3 ft., crimson.....	.60	4.00
Chicago, 5 ft., vermillion.....	.75	5.00
Compte de Bouchard, lemon, spotted red.....	.75	5.00
Duke of Marlborough, 4 ft., rich crimson.....	.60	4.00
Egandale, 4 ft., currant red, bronze foliage.....	.85	6.00
Flamingo, 3 ft., glowing crimson.....	.60	4.00
Florence Vaughan, 4 ft., yellow, dotted red.....	.60	4.00
Italia, 6 ft., orange scarlet, yellow edge.....	.60	4 00
J. D. Cabos, 4 ft., orange; leaves green, shaded with purple.....	.75	5.00
Luray, 4½ ft., pink, pleasing shade.....	.80	5.50
Mlle. Berat, 5 ft., almost pink, green foliage....	.60	4.00
Mme. Crozy, 4 ft., gilt edge, well known.....	.60	4.00
Mrs. Kate Gray, 6 ft., new and very desirable early and stands the sun well; orange scarlet overlaid with gold.....	1.60	12.00
Paul Marquant, 4 ft., salmon color.....	.60	4.00
President Carnot, foliage maroon, flowers scarlet.....	.60	4.00
President McKinley, 3½ ft., deep, fiery scarlet, an early, constant and very profuse bloomer....	.75	5.00
Queen Charlotte, 4 ft., scarlet, with gilt edge....	.60	4.00
Sam Trelease, 3 ft., almost pure scarlet.....	.75	5.00
Shenandoah. This fine new Canna has rich red foliage and pink flowers, forming a pleasing contrast.....	.60	4.00
Souv. d' Antoine Crozy, 3 ft., scarlet, with gold border on each petal.....	.75	5.00
Red Shades, mixed.....	.45	3.00
Yellow Shades, mixed.....	.50	3.25
Chicago Parks Bedding, made up of the best.....	.45	3 00
Good Mixed.....	.40	2.50



DAHLIAS.

Field Grown, Dormant Roots.

To the culture of Dahlias a goodly portion of our grounds is devoted. We have a large collection and are constantly adding to it. Our mixtures contain many desirable named sorts.

	Per doz.	Per 100
Cactus Varieties, named sorts	\$ 1.25	\$ 8.00
" " separate colors	1.15	7.50
" " all colors, mixed	.85	6.00
Pomponne Varieties, named	1.25	9.00
" " separate colors	1.15	7.50
" " all colors, mixed	.85	6.00
Double or Show, named	1.25	9.00
" " separate colors	1.15	7.50
" " all colors, mixed	.85	6.00
Single, mixed	.85	6.00

GLADIOLUS.

We invoice 250 bulbs at 100 rate; 250 at 1000 rate.

GLADIOLUS in mixtures.

	Per doz.	Per 100	Per 1000
Light and White, extra fine grade	\$0.30	\$ 2.00	\$18.00
Light Colors, specially selected	.30	1.75	15.00
Red and Scarlet, mixed shades	.20	1.00	8.00
Striped and Variegated, very choice	.35	2.20	20.00
Yellow Shades, (always scarce)	.40	2.75	25.00
Pink Shades	.25	1.35	11.00
Lemoine's Seedlings	.25	1.25	10.00
Groff's Hybrid Mixture	.30	2.00	
Tracy Mixture	.45	3.00	
Schwarz Mixture	.40	2.60	25.00
Superfine, mixed	.25	1.25	10.00
Good mixed	.20	.90	7.00

NAMED GLADIOLUS.

First-class bulbs of good size and true to name.

	Per doz.	Per 100	Per 1000
Augusta, white, very fine	\$0.75	5.00	
Brenchleyensis, vermilion scarlet	.15	1.00	
Ceres, pure white, spotted with rose	.20	1.75	8.00
Childsij, giant flowers, assorted colors	.30	1.75	
Eugene Scribe, rose, variegated carmine	.85	6.00	
Isaac Buchanan, yellow, very fine	.45	3.00	
John Bull, white, tinged with yellow	.30	2.00	18.00
Madame Moneret, delicate rose	.20	1.00	
May, white, striped crimson	.25	1.60	15.00
Napoleon III, scarlet, white lines in petals	.20	1.00	
Reine Blanche, white, carmine blotch	.60	4.00	
Snow White, almost pure white	1.35	10.00	
"1900", crimson, with white spots on lower petals	.45	3.00	

	Per doz.	Per 100
GLOXINIAS, in separate colors	\$0.75	\$ 4.50
mixed colors	.60	4.00

	Per doz.	Per 100
HYACINTHUS candicans. Shows to good effect planted among or near to Gladiolus	.35	2.00



Japanese Fern Ball.

There continues to be a very strong demand for this beautiful novelty, which, by liberal advertising, has been made well known to the public. The balls **require neither pot nor soil to grow in**; thriving suspended from the green house rafters there is no loss of bench room. *Florists find ready sale for them in dormant state and more especially so when in leaf* From three to four weeks are required for this according to heat and moisture. **7 to 9 inches in diameter**, per doz., \$3.25; per 100 \$25.00. **5 inches in diameter** (suitable for mailing purposes), per doz., \$2.50; per 100, \$20.00.

LILIES.

Our stock of Japan Lilies is imported direct from that country. It will be found first-class and strictly up to size.

Quotations for Fall Delivery Ready April 1st.

25 at 100 rate; 250 at 1000 rate.

	Per doz.	Per 100	Per 1000
Auratum, gold banded, 7-9 inch	\$0.75	\$ 5.50	\$50.00
" 9-11 inch	1.10	8.00	75.00
Album, white, 7-9 inch	.90	5.50	50.00
" 9-11 inch	.90	5.50	50.00
Rubrum, spotted, 7-9 inch	.75	5.75	52.50
" 9-11 inch	1.00	8.00	75.00
" 11-13 inch	1.60	12.00	
Kretzeri, 8-9 inch (an improved Album)	.85	6.00	
" 9-11 "	1.00	7.50	
Tigrinum (Single Tiger Lily)	.40	2.50	
splendens (an improved form)	.45	2.75	
fl., pl., double	.50	3.00	

	Per doz.	Per 100
MADEIRA VINE, good tubers, 1000	\$10.00	.30
MILLA biflora, excellent cut-flower; white, star-shaped flowers on long stems	.35	2.50

OXALIS. They make a splendid edging for flower beds and increase very rapidly. We offer pink and white varieties in mixture. 1000, \$1.25 .25

PEONIES. Strong roots of best sellers.

	Per doz.	Per 100
Double White	1.75	12.00
Red and Crimson	1.75	12.00
Pink	1.35	9.00
Assorted, equal quantities of each color	1.20	

TIGRIDIAS (Mexican Shell Flower).
Red, white, yellow or mixed. .40 2.50

TUBEROSES.

These we handle in large quantities and can name interesting figures to buyers of large lots. Per 100 Per 1000

	Per 100	Per 1000
Dwarf Pearl, large bulbs	1.20	10.00
" " second size bulbs	.75	5.50
Tall Double, prime stock	1.20	10.00

Roses, Shrubs, Climbers and Out-door Plants.

Of all of the above we carry ample stock. Many leading nurserymen and florists depend upon us for their supply of imported stock. We aim to sell the **BEST QUALITY** and that only; please remember this when comparing our prices with others.

Hybrid Perpetual Roses.

Budded, dormant, two-year-old stock.
Ready April 1st.

Assorted, doz., \$1.65; 100, \$12.00.

Abel Carrier	La France
Alfred Colomb	La Reine
Anna de Diesbach	Mabel Morrison
Baron de Bonstetten	Merveille de Lyon
Baroness Rothschild	Mme. Plantier
Capt. Christy	Mme. Victor Verdier
Coquette des Alps	Magna Charta
Francois Michelon	Paul Neyron
Fisher Holmes	Perle des Blanches
Giant des Batailles	Prince Rohan
Gen. Jacqueminot	Ulric Brunner
Gen. Washington	and others.

Moss Roses, assorted varieties, in white, pink and red.....doz., \$1.65; 100, \$12.00

Tree Roses, straight stemmed, well shaped plants, budded, in assorted colors.
Each, 50c; doz., \$4.00; 100, \$30.00.

Weeping Roses, 3 to 4 ft., red and white.
Each, 90c.; doz., \$9.00.

CLIMBING ROSES.

All strongly rooted, field-grown plants.

Crimson Rambler. Forces readily and sells quickly when in bloom as a pot plant. A vigorous grower at all times, especially so out of doors. Flowers borne in great clusters.
Doz., \$2.00; 100, \$15.00.

Yellow Rambler. Same as above, except in color. Doz., \$2.00; 100, \$15.00.

Baltimore Belle, Prairie Queen and Seven Sisters. Extra large plant. Doz., \$3.00; 100, \$20.00. Medium grade, doz., \$1.25; 100, \$8.00.

ROSA WICHURAIANA.

The Beautiful Memorial Rose.

Creeps over the ground like ivy. Much used for cemetery planting. Single white flowers in clusters.

Doz., \$1.50; 100, \$10.00.



HARDY SHRUBS.

	Doz.	100
Almond, white and pink.....	\$1.75	\$12.00
Althea, double red.....	1.75	12.00
Calycanthus floridus.....	1.75	12.00
Deutzia gracilis, bushy.....	1.20	7.50
Dogwood, large plants.....	2.00	15.00
Forsythia viridisima.....	2.00	15.00
Honeysuckle, upright.....	1.75	12.00
Hydrangea paniculata grandiflora.		
Branched, 30 in. and over.....	\$1.50	\$10.00
Standard, bushy top.....	3.50	
Lilac, purple, 2 to 3 ft.....	1.50	10.00
" 3 to 4 ft.....	1.75	12.00
" white (<i>Syringa alba</i>).....	2.00	15.00
Mock Orange or Philadelphus.....	1.75	12.00
Spiraea prunifolia, upright.....	1.60	12.00
Van Houttei, drooping.....	1.60	12.00
Snowball, common, 2 to 3 ft.....	1.75	12.00
" large, imported.....	3.00	20.00
" Japan (<i>Plicatum</i>).....		
2 to 3 ft.....	3.00	20.00
Weigela, assorted.....	1.75	12.00
Xantheros Sorbifolia (Yellow Horn).....	3.00	20.00

CLIMBERS.

AMPELOPSIS Veitchii, extra heavy, Holland-grown, doz..... \$1.80; 100, \$13.00; young stock, doz., \$1.50; 100, \$10.00.

Quinquefolia, strong plants, doz., \$2.00; 100, \$15.00.

Aristolochia siphon, strong, per doz., \$3.00.

CLEMATIS.

Large 3-year-old Holland-grown stock.

The following well-known sorts and others of similar colors. Doz., \$3.75; 100, \$27.00.

Duchess of Edinburg, white.

Gipsy Queen, dark purple.

Henry, large white flowers.

Jackmani, rich purple.

Lanuginosa Candida, white, tinted.

Mad. Baron Veillard, rose, shaded lilac.

Miss Bateman, white, with chocolate-red anthers.

Sieboldi, bright blue.

Standishi, lavender.

CLEMATIS PANICULATA.

Pure white, fragrant, small flowers.

The plant in bloom is a beautiful sight.

Field-grown plants, doz., \$1.75; 100, \$12.00.

HONEYSUCKLES, extra large, doz., \$3.00.

Japan Golden, Chinese Twining and

Yellow Trumpet, doz., \$1.50; 100, \$10.00.

Scarlet Trumpet, Monthly Fragrant

and Halliana, doz., \$2.00; 100, \$15.00.

WISTARIA, purple, doz., \$1.75; 100,

\$12.00; extra large plants, doz., \$4.00;

100, \$30.00.

Buxus, (Boxwood) 2 to 3 ft., each,

\$1.00 and \$1.25.

Rhododendrons, nice plants, with clean

foliage, will set with buds; each, \$1.00.



HARDY OUT-DOOR PLANTS—FIELD-GROWN.

There is an ever-increasing demand for these hardy plants. Florists will find them of ready sale.

	Doz.	100	Doz.	100
Aquilegia chrysantha , strong plants.....	\$0.85	\$ 6.00		
Coryopsis lanceolata grandiflora , clumps.....	.75	5.00		
Delphinium Formosum (Larkspur).....	.85	6.00		
Dianthus Barbatus (Sweet William), clumps.....	.85	6.00		
Digitalis (Foxglove), assorted.....	.85	6.00		
Funkia , cordata, white.....	.75	5.00		
" variegated leaved.....	1.40	10.00		
Helianthus multiflorus	1.10	8.00		
Hollyhocks , in separate colors.....	1.10	8.00		
Hollyhocks , Allegheny, fringed flowers.....	1.40	10.00		
Iris Kaempferi or Japan, assorted colors.....	.75	\$5.00		
Iris German , collection of named varieties.....	.60	4.00		
" " mixed colors.....	.30	2.00		
Myosotis (Forget-me-not), assorted.....	.60	4.00		
Peonies , see preceding page.				
Phlox , field-grown; from pure white to deep purple.....	1.10	8.00		
Pinks , grass, clumps.....	.85	6.00		
Rudbeckia , "Golden Glow," clumps.....	.85	6.00		
Vinca , purple flowers. Used in cemeteries, etc....	.85	6.00		
Yucca filamentosa , strong plants.....	1.10	8.00		

Alphabetical Price List of Florists' Sundries.

Unless otherwise stated, the purchaser pays the freight or express charges.

APRONS, Rubber.—Used by many florists when watering or syringing. Each.....\$1.50

BELLOWS.



For applying sulphur or any dry insecticide.
 20-inch long, holds 4 oz. powder\$0.75
 24-inch long, holds 8 oz. powder 1.00
Jumbo Powder Gun. Each..... .20

AMMUNITION, Dry Powder.

We carry ample stock of nearly every known insect destroyer. Complete list on next page. See "Insecticides."

LEGGETT'S PARIS GREEN OR DRY POWDER GUN.

For Orchard, Vineyard, Garden or Potato Field. Distributes Paris Green, Sulphur, "Fungroid," (a powdered Bordeaux Mixture) or any dry powder. **THOUSANDS IN USE** Illustrated Circular on application.



A Wonderful Invention Light, Swift, Easy, Safe, Strong and Cheap.

The **Champion Powder Gun** does efficient work on Potatoes, Cabbage, Tomatoes, etc., in fact, all garden and field crops. The gun will cover one or two rows as rapidly as a man walks. By the use of extension tubes the gun can be used on fruit trees.

PRICE:
\$7.50
 complete with all attachments.

BOUQUET PAPERS.

Fancy Italian, wide lace open border, assorted patterns.					
No.	Inches.	Dozen.	No.	Inches.	Dozen.
0	7	\$0.60	3	5	\$0.40
1	6½	.55	4	4½	.35
	5½	.45	5	4	.30

BOWLS, for Chinese Lilies, Imitation cut glass.

Nicely finished. Per dozen.....\$1.40

Earthenware. Handsomely glazed (see cut). Per dozen..... 75



CANE STAKES, Bamboo. (See Plant Stakes.)

COTTON WADDING. For packing flowers, etc. White, per dozen sheets, 25c; bale (40 dozen sheets),.....\$9.25

CAPE FLOWERS. (About 1,000 to the pound.)

Colors: Scarlet, yellow, pink, lavender, purple, pea-green and blue. Any color, per lb..... 1.50
 White, extra select, \$1.25; white, smaller size, per lb.... 1.00

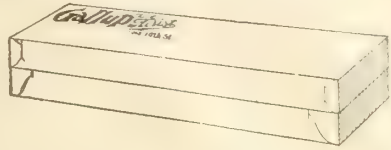
CYCAS (Sago Palm) LEAVES. Preserved.

Perfect in shape and natural green color.

Length.	Each.	Doz.	Length.	Each.	Doz.
12 to 16 inches	\$0.10 \$1.00	28 to 32 inches	\$0.20 \$2.00
16 to 20 "12 1.25	32 to 36 "23 2.25
20 to 24 "14 1.50	36 to 40 "25 2.50
24 to 28 "15 1.75	40 to 44 "30 3.00

DANDELION PULLER and Lawn Weeder. Simple, sure and certain to remove the weed. Each.....50c

CUT FLOWER BOXES.



Cream color. Moisture proof. All shallow boxes have full telescope covers. The deep boxes are made of heavy board, and have covers 2½ in. high. We can fill orders for these, blank or unprinted, on short notice. From a week to ten days required if there is printing to be done. For printing (in one color ink) on any size order, regardless of quantity, an additional charge of \$1.00 is made.

No.	Size in inches.	Per 100	No.	Size in inches.	Per 100
1.	3 x15x5 deep	\$1.90	6.	3x30x5 deep	\$3.10
2.	3 x18x5 "	2.10	7.	4x21x8 "	3.60
3.	3 x21x5 "	2.30	8.	4x24x8 "	3.95
4.	3½x18x6 "	2.50	9.	4x28x8 "	4.40
5.	3½x24x5 "	2.85	10.	5x35x6 "	6.00

Prices given on White Lined and Green Lined Boxes if requested.

Floral Design Boxes.

Made of heavy double lined board.

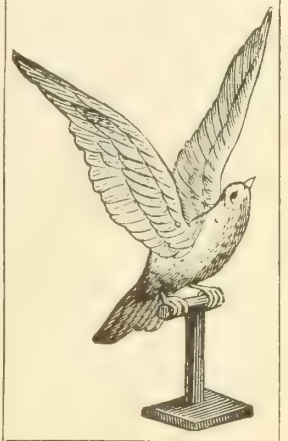
No.	Size in inches.	Per 100	No.	Size in inches.	Per 100
11.	6x20x20 deep	\$ 9.90	13.	7x26x17 deep	\$11.50
12.	8x20x20 "	12.00	14.	6x36x14 "	11.50

These Design Boxes we do not carry in stock. A short time only is needed to secure them.

DIBBER, for setting plants, iron.....\$0.25
 " wooden handle, steel point..... .30

DOVES.

Of these we have a splendid assortment of birds, perfect in form and best quality. Wings can be bent up or down to suit fancy. Please state head position when ordering. These doves are mounted on stands and particular attention is given to packing. Each, \$1.00; per dozen, \$10.00. (Eight or more supplied at dozen rate.)



FAIRY FLOWERS.

Bright, fresh, clean stock.

White	Per 100
Colored, in various shades	\$1.00
	1.35

FLOWER POTS. These prices are f. o. b. Chicago.

Standard Flower Pots.		Bulb or Fern Pans.		
	100	1,000	Doz.	100
2 inch	\$0.40	\$ 3.50	5 inch	\$0.35 \$ 2.25
2 " " rose	.40	3.50	6 " "	.50 3.30
2½ " "	.50	4.00	7 " "	.75 5.50
3 " "	.65	5.25	8 " "	1.00 7.00
3½ " "	.80	6.00	10 " "	1.45 10.80
4 " "	1.00	7.50	12 " "	2.15 15.75
4½ " "	1.25	9.50		
5 " "	1.75	14.00		
6 " "	2.75	22.50		

Saucers can be supplied. If interested write for prices.

On orders of less than \$5.00 we charge extra for packing.

FUMIGATORS, Galvanized Iron.

Eureka No. 1. Capacity, ½ peck stems, Each	\$1.25
" " 2. " " 1 " " " "	1.50
" " 3. " " ½ bushel " " " "	2.50
" " 4. " " ¾ " " " " " "	3.25

FERTILIZERS.

We keep but one grade. The best. Special quotations to buyers of large quantities.

"Feed the soil and the soil will feed you." Crops cannot live and thrive on air and water alone. Their roots penetrate the earth and absorb therefrom the nitrogen, phosphoric acid, potash or other elements of plant food they require. In some form these must be replaced.

Bone Meal.

Guaranteed pure bone and equal to any in the market. It is ground fine and is an excellent top dressing for lawns, grass lands, farm and field crops; also for mixing with potting soil. 25 lbs., 70c.; 50 lbs., \$1.25; 100 lbs., \$2.00; bag of 20 lbs., \$3.50; 500 lbs., \$8.00; 1000 lbs., \$15.00, ton \$30.00.



Pulverized Sheep Manure.

This is natural manure, dried, clean and easy to handle. Its effect is immediate and lasting. Placed directly in hills or drills it promotes a rapid, steady growth until maturity. 100 lbs., \$1.00; 500 lbs., \$4.00; 1000 lbs., \$7.50; ton, \$14.00.

Bowker's Plant Food.

A good article for retail trade. In two sizes, ½ lb. and 1 lb.
½ lb. box, each, 12c.; doz. \$1.15
1 lb. box, each, 20c.; doz. 2.15

Horn Shavings.

We occasionally have calls for this. 5 lbs., 40c.; 10 lbs., 70c.; 25 lbs., \$1.00, 100 lbs., \$3.50.

Nitrate of Soda.

A quick acting fertilizer for all crops, hastening maturity greatly. Should be applied broadcast and evenly. 10 lbs., 60c.; 25 lbs., \$1.25; 50 lbs., \$2.00, 100 lbs., \$3.50.

Peruvian Guano.

Guaranteed pure. A standard fertilizer. 10 lbs., 60c.; 25 lbs., \$1.25, 100 lbs., \$4.00

Lawn Fertilizer.

Dry, clean, odorless and free from weed seeds. If applied two or three times during the season at rate of one pound to one hundred square feet of lawn, just before a good rain or watering, or at any time, the grass roots are fed by it and the lawn retains a healthy appearance. 10 lbs., 40c.; 25 lbs., 70c.; 50 lbs., \$1.25, 100 lbs., \$2.25.

Unleached Hardwood Ashes.

We have secured a supply of genuine hardwood ashes, which is greatly superior to the grade generally found on the market. It is very beneficial for all garden and field crops. Recommended to cabbage and onion growers. Of much value for grass land and lawns. 25 lbs., 50c.; 50 lbs., 85c.; 100 lbs., \$1.50.

Bone and Blood.

Recommended for mixing with potting soil, application to soil on benches for carnations, and for all vegetables. In garden plots apply one or two tons per acre. In rows or drills one to two hundred pounds to the acre will suffice. 100 lbs., \$1.75, per ton \$27.50.

Glazing Tools, Etc.

GLASS CUTTER. Diamond Universal, with guide wheel, each, \$3.50.

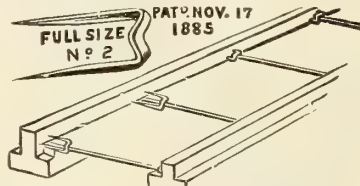
Glass Cutter and Glazing Tool. Doz., 60c.; 3 for 15c.; each 6c.

PUTTY BULB. Scollay's, for applying liquid putty (by mail, 85c.); each, 75c.

PUTTY. Twemlow's Old English. Semi-liquid, applied with machine, bulb or brush. Per gal., \$1.25.

MASTICA. Easy to apply and is not affected by extremes of weather. Per gal., \$1.25; 6 gals., \$7.00; bbl. (22 gals.), \$23.40.

Mastica Machine, each, \$1 25.



Van Reyper Perfect Glazing Points.

Carried in three sizes: No. 1 for small, single thick glass. No. 2 for larger, single thickness. No. 2½ for double thick glass and skylights. No trouble to insert and practically indestructible. No rights or lefts. Price per box of 1000, 60c.; by mail, 75c.; in lots of 5000, 55c. Not prepaid.

Pincers to set same in place, each, 40c

GARDEN LINE. Best braided, 100 feet, 60c.

Garden Line Reel, each, 45c.

GRAFTING WAX, in bars, ¼ lb., 10c.; ½ lb., 20c.; 1 lb., 30c. (If by mail, add 16c. per lb.)

GRASS HOOKS OR SICKLES.

English, riveted back, the best. No. 0, 50c.; No. 1, 55c.; No. 2, 60c. each.
American, plain back, serviceable, each, 15c.

HOSE, RUBBER, ETC.

Our Special Florists' Brand is a ¾ in. extra heavy grade. It is a strictly high pressure hose. Supplied with couplings. 50 ft., \$7.50; 100 ft., \$15.00.

Gardeners' Brand. For those who desire a less expensive grade, our gardeners' brand is recommended. A good serviceable article. 50 ft., \$5.50; 100 ft., \$11.00.

Electric, Non-Kinkable. ¾ inch; most lasting of all hose. Per ft., 16c.

ACME HOSE COUPLER.

No. 1—For New Hose. With the use of No. 3, goes on end that attaches to either faucet or ground pipe. It is used with No. 2 for connecting two lengths of hose.

No. 2—For New Hose. Used on nozzle end of hose and can be connected with any nozzle by using the No. 4 as an intermediate. Used with No. 1 for connecting two lengths of hose.

No. 1, each, 12c.
No. 2, " 10c.
No. 3, " 10c.
No. 4, " 12c.

No. 3—For New and Old Hose. Screws on faucet, ground pipe, or hose crook, on any of which it may be left permanently, and to it the hose is readily attached by the lever connections, No. 1 or 4.

No. 4—For Old Hose. Screws into old style couplings on hose and attaches to No. 2 or 3. Used as an intermediate for connecting nozzle to No. 2 or 3.

Dozen, \$1 10
" 75
" 75
" 1 10

Iron Couplers, common, pair, 15c.

HOSE NOZZLE. Gem. Will throw from full stream to fine spray, each, 35c.

HOSE MENDERS. Hall's. ¼ inch, each, 8c.; doz., 50c.

Cooper's Brass. Will not rust or wear out. Makes the hose as good as new. 10c.; doz., 75c. Wooden, doz., 10c.

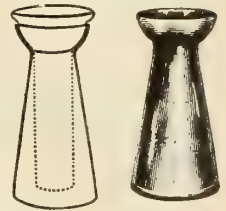
Hyacinth Glasses.

In assorted colors.

Tall, each, 15c.; doz., \$1.25.

German (with tube), each, 20c.; doz., \$2.00.

No extra charge for packing.



INSECTICIDES.



Dry powder and soaps can be sent by mail. Postage 16c. per lb. additional. Liquid insecticides are not allowed in the mails.

Bordeaux Mixture. 1 lb. box, 15c.
Bordeaux Mixture and Paris Green Compound. 1 lb., 25c.

Fir Tree Oil. Directions on bottle. 1 pt., 60c.; 1 qt., \$1.00; 1 gal., \$3.50.

Flour of Sulphur. To destroy mildew, etc. 1 lb., 10c.; 10 lbs., 50c.; 25 lbs., \$1.15; 50 lbs., \$2.00.

Grape Dust. Prevents mildew in greenhouse or open air. 5 lb. packages, 35c

Hellebore, powdered. 1 lb., 20c.; 5 lbs., 75c.

Insect Powder. Dalmatian or Persian. 1 lb., 40c.; 5 lbs., \$1.35.

Nicotinic. A new, well recommended fumigating compound. 4 oz. (for 8000 ft.), 70c.; ½ pint, \$1.25; 1 pint, \$2.50.

Nikoteen. Specially prepared for green house use. 1 pint, \$1.50.

Fumigator. (Pan, wire frame and lamp.) Each, 50c.

Nikoteen Aphid Punk. In rolls. Three of them will effectually fumigate a 100 ft. house. Box of 12 rolls, 60c.; case (12 doz.), \$6.50.

Paris Green. 1 lb., 25c.; 5 lbs., \$1.00.

Rose Leaf Insecticide. 1 pint, 30c.; 1 qt., 50c.; 1 gal., \$1.25; 5 gal. can, \$4.25.

SLUG SHOT.

Kills every garden pest; harmless to human life. By bbl. (240 to 250 lbs.), per lb., 4c.; in cartons, for retailing, each, 10c.; in canisters (1 lb.), with perforated screw top, each, 20c.; in 5 and 10 lb. packages, per lb., 5c.

Slug Shot Dusters. ½ gal. size, perforated bottom, each, 35c.

Tobacco Dust. 5 lbs., 20c.; 10 lbs., 30c.; 100 lbs., \$2.00.

Tobacco, powdered. Stronger than the Tobacco Dust. 5 lbs., 40c.; 10 lbs., 70c.; 25 lbs., \$1.25; 100 lbs., \$4.75.

Tobacco Stems. Bales (200 lbs., more or less), per 100 lbs., \$1.00. Write for price by ton.

Tobacco Soap. Box sufficient to make five gallons of solution, 25c.

Walle Oil Soap. 1 lb., 15c.; 2 lbs., 25c.; 5 lbs., 50c.

IMMORTELLES.

We carry a large supply, both colored and natural. Large bunches, highly colored. Scarlet, blue, green, pink, white.

- Per bunch.....\$.30
- Per doz..... 3.00
- Yellow** (natural color). Per bunch. . . .25
- Per doz..... 2.50



FLORISTS' KNIVES.

Made in England by Saynor & Cook. Their cutlery has a world-wide reputation for superior quality.

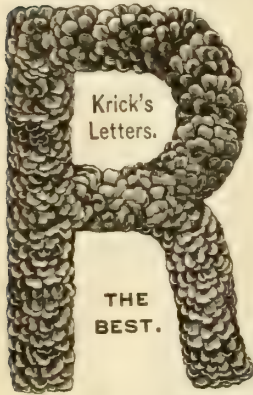


- Asparagus**, saw-tooth blade, each.....\$1.00
- Budding or Propagating**—No. 341, \$1.00; No. 343, double blade, \$1.25; No. 401, \$1.15; No. 403, long handle, \$1.25.
- Pruning**, rough, bone handle, single blade, 75c; double...\$1.00

WOODEN LABELS.

	Plain Painted	1,000	Plain Painted
3-inch.....	\$.60	12-inch.....	\$4.50
4 ".....	.50 .70	3 1/2 " Tree Labels,	
5 ".....	.70 .85	notched and	
6 ".....	1.20	brass wired....	1.00
8 ".....	1.75	<i>Special price for large lots.</i>	
10 ".....	2.50		

LETTERS AND LETTERING.



- Lettering.** Per yard, 30c; 4-yard package, 90c; 6 packages, \$5.00
- Letters and Figures.** Krick's, purple, 2-inch, each, 3c; 100, \$2.75.
- Felt Letters.** Can be pasted on ribbon same as a postage stamp; 100, \$1.00.
- Boston Letters and Figures.** Patent fastener with each letter; 2 inches, purple; per 100, \$2.00.
- Boston Script Letter.** At 4c per letter we supply any of the following words:
Asleep, Baby, Husband, Wife, Grandpa, Grandma, Father, Mother, Brother, Sister, Rest, At Rest, Our, My, Finis and Friend.

CHENILLE LETTERING.

- Worsted, Large,** purple, pink, white, scarlet, blue or yellow; 12 yards, 30c; per gross.....\$2.25
- Worsted, Small,** 12 yards, 25c; per gross..... 2.00
- Worsted, Twisted, large;** 12 yards, 30c.
- Silk,** assorted colors; 12 yards, 75c.

- MATCH STICKS.** Put up in packages of 250 each; these we do not break; 5-inch, 50c; 12-inch, 75c; 18-inch, \$1.00 per 1,000.
- MOLE TRAP.** Olmsted's Improved; a good one.....\$1.25

MOSS.

- French Moss,** in square packages; pkg., 10c.
- Sheet Moss,** for hanging baskets or windows; per bale..... 75c.
- SPHAGNUM MOSS.** Select stock; extra clean for florists' use; large bales and well packed in burlap; 10 bales, \$8.00; 6 bales, \$5.00; per bale.....\$1.00



MUSHROOM SPAWN.

- English manufactured stock.** We import it frequently. Brick (about 1 lb.), 15c; 10 lbs., \$1.00; 25 lbs., \$2.00; 100 lbs....\$7.00

PAPER for Florists.

- Crepe,** assorted colors, American, 10c. Imported, 20c per roll.
- Manilla, flat,** 24x36 in., 10 lbs., 50c; bundle (20 lbs.), lb., 4 1/2c.
- Manilla, in rolls,** 100 lbs., \$4.00; in less quantity, 4 1/2c lb.
- Tissue Manilla,** 10 reams, \$4.75; 400 sheets, 50c.
- Tissue Manilla,** in 24-inch rolls, 100 lbs., \$10.00; in less quantity, 11c per lb.
- Waxed Manilla—B,** thin; 100 sheets, 40c; 400 sheets, \$1.40.
- A,** medium; 100 sheets, 60c; 400 sheets.....\$2.25
- White Wax,** 24x36; medium, 100 sheets, 50c; 400 sheets..\$1.65
- Wrapping Paper,** "Express;" 10 lbs., 65c; 100 lbs.....\$5.00
- Rack and Cutter,** for up to 36-inch rolls, each.....\$1.00.
- PINS, FLORISTS'.** They have glass heads and strong wires. Put up in boxes of 1,000, all one kind or assorted.

	Per 1,000	Per 1,000
1-inch.....	\$.50	3-inch.....\$1.50
1 1/2 ".....	.75	3 1/2 "..... 1.75
2 ".....	1.00	4 "..... 2.00
2 1/2 ".....	1.25	

PLANT STAKES.

- Cane or Bamboo.** Bundles of 250, \$1.25; per 1,000.....\$4.00
- Galvanized Steel Wire.** Subject to market changes.
- 3 feet, per 100.....\$0.75 Per 1,000.....\$6.65
- 3 1/4 " "..... 1.00 "..... 8.50
- 4 " "..... 1.10 "..... 9.75
- 5 " "..... 1.25 "..... 11.25

PLANT BED CLOTH.

- Pieces contain from 40 to 60 yards.**
- Heavy Grade.** Per yard...12c **Light Grade.** Per yard... 5c
- By piece, per yard.....10c By piece, per yard..... 4c
- Medium Grade.** Per yard. 8c
- By piece, per yard..... 7c **POTS.** See Flower Pots.

- PUMPS, Hand Force.** Tin. A very useful tool; each...\$.75
- The Kinney.** For applying liquid manure it has no equal. With spraying valve..... 2.00
- Spray Pumps.** See next page.

RAKES.

- GARDEN.** Steel, each, 50c; Iron, each..... .35
- LAWN, Gibbs.** Has 30 copper steel wire teeth, so constructed as to prevent digging up soil, clogging, or allowing grass to fall over head; each..... .75
- Finley Rotary Lawn Rake.**
- This machine takes up, after the mower, all the grass, twigs, leaves, and even stones. A child can operate it. Price, 20-inch..... 12.00
- RATTAN,** for wreaths; lb., 20c; 10 lbs..... 1.85
- RIBBONS.** See next page.
- ROFFEA,** for tying. **Natural;** lb., 20c, 10 lbs. \$1.25; 100 lbs., 11.00
- Dyed in red, yellow, orange, black or green; per lb..... .50

SAWS (Pruning).

- Double Edged,** 18 inches long; each..... .65
- The "Forest."** Made of best steel, with adjustable blade. Can be used as a hand saw or attached to a pole. Each..... 1.35

SEED BAGS.

- Prices named are for unprinted bags in thousand lots;
- White,** 3x2 1/4, for flower seed, \$1.25; Miniature, 60c;
- Manilla,** 1/2 oz., 70c; 1 oz., 85c; 2 oz., \$1.00; 4 oz..... 1.25
- SCYTHES, English Lawn.** Best scythe that can be used on a lawn; no trouble to keep sharp; 34x36 inch..... 1.25
- Honest Dutchman,** 28-inch, each..... .60
- SCYTHE SNATHS.** Each..... .75
- SCYTHE STONES, English Round Talacre.....** .10

SHEARS.

- Border.** For trimming edges of walks and among shrubbery. With wheel, \$2.25; without wheel..... 2.00
- Grass.** Similar to sheep shears; imported..... 1.00
- Hedge.** 8-inch, \$1.00; 9-inch..... 1.25
- Improved Wire-cutting.** For florists; each..... .65
- Pruning.** No. 33, iron handle, steel blades, 25c; No. 300, all steel, 35c; No. 46, 9-inch, 50c. "Star," 8 1/2-inch..... .75
- 3B. 7 1/2-inch; excellent for light pruning..... 1.60
- No. 109, 9-inch, Wiss'; all steel, \$1.75. No. 110, 10-inch, Wiss', all steel..... 2.00

Satin Ribbon for Florists.

We can supply almost any shade and width desired. These ribbons are put up in bolts of ten yards each. We do not sell less than ten yards of any one color.

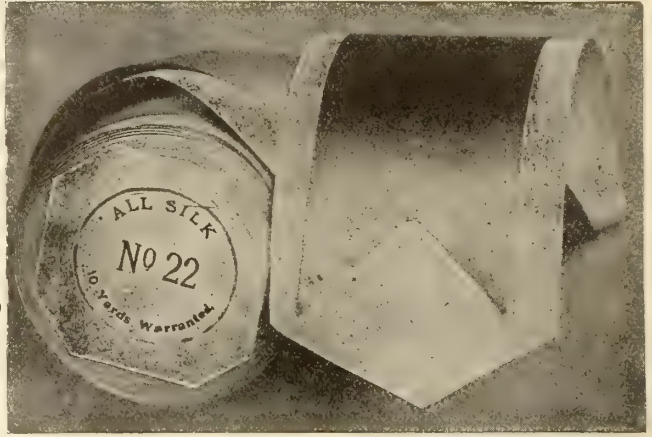
When ordering, if possible, send a sample to match. If unable to do so, state color of flower to be used with. *In addition to remarks about color, always specify number and width.*

No.	Width.	10 yds.	No.	Width.	10 yds.
2	½ in.	\$0.35	9	1½ in.	\$0.95
3	¾ in.	.45	12	1¾ in.	1.10
5	¾ in.	.55	16	2¼ in.	1.25
7	1¾ in.	.70	22	2¾ in.	1.50

“Topic” (Satin Ribbon), “Jubilee” (Taffeta Ribbon)
Same price.

Greater widths than above named can be furnished at a proportionate increase in price.

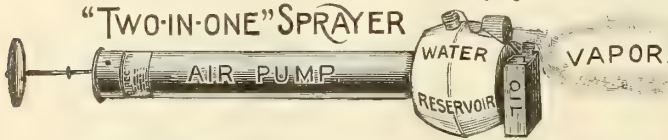
BABY RIBBON. In any color, per spool of 50 yards, 45c.



SPRAYERS.

THE DEW-EY

For applying Liquid Insecticides, and other purposes.



THE AUTO-SPRAY.

For applying insecticides in solution the Auto-Spray will prove a boon to every florist. The spray can be made as fine as mist, and by reason of being discharged through a short piece of tubing, can be directed to the underside of foliage as well as other places which the hand-syringe fails to reach.

The Auto-Spray is easy to operate. It is light (empty, 7 lbs.; loaded, 39 lbs.), and is carried by a shoulder strap. It is also an excellent machine to spray trees in the orchard or nursery.

- Galvanized Iron Reservoir.....\$4.50
- Solid Brass Reservoir.....\$4.50
- Compressed Air Fountain Sprayer.

A churn-shaped machine that is carried in the hand. It is made of galvanized iron, thoroughly riveted, and will stand high pressure. One filling will spray 4,000 hills of potatoes. By attaching a four-foot length of hose, spray can be thrown into the tops of fruit trees. Price: Fountain Sprayer.....\$4.50

- Fruit Tree Attachment......50
- The Dewey Tree Sprayer, each, \$2.35.
- The Dewey Sprayer, “Two in One” (See cut), each, \$1.00.
- Cyclone, Cylinder, 1½x18 in., each, 50c.
- The Daisy, all tin, holds 12 ozs., 50c.
- The Household, holds 6 ozs.....35c.

Descriptive Circulars of Powder Guns, Sprayers and Dry Insecticides sent on application.

Excelsior Carnation SUPPORTS.

Made of No. 12 galvanized wire, in sets of 20 and 12 inch, 24 and 14 inch, 18 and 10 inch. \$1.25 per hundred; \$10.00 per 1000.

Illustrated and descriptive circular for the asking.

SPRINKLERS.

Scollay's Rubber. There are others, imitations, but none of them equal to the old reliable “Scollay.”

Size.	Each.	Postpaid.	Doz.
Large, No. 1	\$0.75	\$0.85	\$8.50
Medium, No. 3	.60	.67	5.79
Small, No. 4	.50	.55	4.00
Angle Neck,	.75	.85	8.50

LAWN SPRINKLERS.—These are attached to the end of hose. **Dewdrop**, each, 15c. **Rainmaker**, No. 2, one of the best, each, 50c. **Philadelphia.** This does its work perfectly and without a revolving motion, therefore, very durable. Each, 75c.

BRASS SYRINGES.

For syringing plants in greenhouses and conservatories. We carry various sizes and qualities as below:

Length of Barrel, 12½ in.; diam., 1⅞



No. 00. One spray rose, holes of large size; barrel, 14 inches; diameter, 1½ inches.....	\$2.50
No. 6. Cone valves, two spray roses and jet. Side attachments and movable goose-neck angle joint. Length, 18 in.; diameter, 1½ in....	5.50
No. 8. Cone valves, one-spray rose, cross handle. Length, 18 in.; diameter, 1¼ in.....	6.00
No. 10. Conical valve, full size. Two spray roses and jet; barrel, 18 in.; diameter, 1½ in.....	4.50
No. 11. Open rose syringe. Two spray roses and jet. Side attachment.....	4.00
No. H. All brass, full length valve syringe. Length, 18 in.; diameter, 1½ in.....	2.25
No. K.....	1.75

THERMOMETERS.

These we do not send by mail.

Hotbed. Mounted in wood, with brass point, each, \$1.00.

Long Distance. Has very large figures and red mercury, each, 15c.

Self-Registering, with magnet, 8 in., each, \$1.50.

Tin Case, 8 in., each 12c.; doz., \$1.20.

THREAD AND TWINE.

King Arthur Florists' Thread. Similar to Silkline. Put up in boxes, containing 12 spools. Box, \$1.00; spool, each, 10c.

Silkline, spool, 20c; box of 8 spools, \$1.25.

TWINE.—Cotton, 5 lbs., \$1.00; 1 lb., 25c.

Jute, for bunching, 3 or 4 ply, 10 lbs., \$1.25; 1 lb., 15c.

Linen, Green. For tying packages and Similax, per tube, 15c; lb., 55c.

TIN FOIL,

Subject to Market Changes.

Medium, 5 or 7 inch, 2 lbs., 25c.; 10 lbs., \$1.00; 50 lbs., \$4.50; 100 lbs., \$8.75. **Violet**, 1 lb., 55c.; 5 lbs., \$2.50.

TOOTHPICKS. Finest quality C. T. & Co.'s; full count, 1 box, 10c.; 3 boxes, 25c.; 17 boxes, \$1.00; per case (100 boxes), \$5.00.

TROWELS. Ladies' Flower Trowels, each, 10c. No. 309. **Forged Steel**, 6 in., each, 30c.; 7 in., 35c.; 8 in., 45c. No. 3090. **Solid Steel**, 6 in., each, 25c. No. 3100. **Cast Steel** (English pattern), 6 in., each, 20c. **Transplanting Trowels**, 6 in., each, 15c.; 7 in., 20c.

IMPORTED ENGLISH TROWELS.—**Solid Steel**, 6 in., each, 50c.; 7 in., 60c.; 8 in., 70c. Solid steel, riveted through handle, each, 75c.

TUBS

For Plants and Trees, for Azaleas, Camellias, Bay Trees, etc.

COLUMBIA.—This brand has been on the market several years. The tubs are made of twelve tapered staves of best Louisiana cypress, held together by two steel wires, connected by neat handles at each side. By turning the nut within the handles the staves can be loosened or tightened at will. **Natural finish on the wood.**

12x11 inches high.....	each, \$1.00
15x14 " " " " " " " " " "	1.50
18x16½ " " " " " " " " " "	2.00
21x18½ " " " " " " " " " "	2.50
24x20½ " " " " " " " " " "	3.00

Less 10 per cent. discount.

TREE PRUNERS.

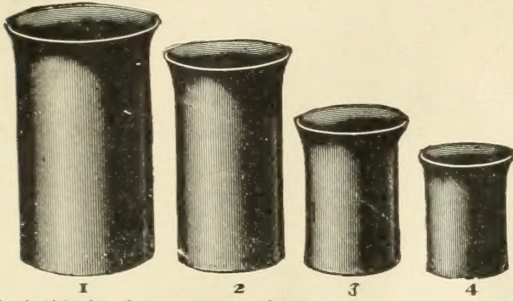
Water's. This is an excellent tool. It will cut limbs three-fourths of an inch in diameter. With 4 ft. pole, 50c; 6 ft., 60c; 8 ft., 75c; 10 ft., 80c; 12 ft., each, 85c.
Eagle, each, 50c.

TURF EDGER. Made of best quality of steel. The rounded blade will take a sharp edge and, carefully handled, retain it a long time. Common, 35c; imported, \$1.00.

TURLING IRON, or English Lifting Spade. A very strong tool useful for taking up sod, shrubs, small trees, etc., \$4.00.

FLORISTS' INDURATED FIBER VASES.

These vases are light, strong, of good appearance, easily kept clean and will not break as easily as earthen vases.



No. 0, 13 inches deep, per crate of 6, \$1.90	each, \$0.35
No. 1, 10 " " " " 6, 1.65	each, .30
No. 2, 9 " " " " 6, 1.45	each, .28
No. 3, 6 " " " " 6, 1.20	each, .25
No. 4, 4½ " " " " 6, 1.00	each, .20

The No. 0 is different shape from the others, having a diameter of 7 inches on bottom and 9 inches at the top. An excellent vase for Lilies and Chrysanthemums, etc.

VASES, Iron, for graves. In three sizes: Small, each, 25c; medium, 30c; large, 35c.



EXCELSIOR WEEDER.

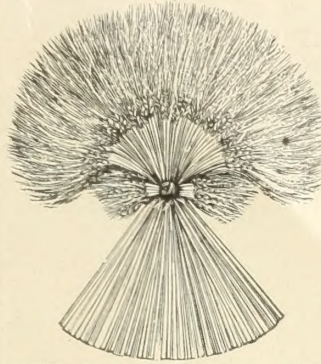
WEEDERS.

Excelsior. Just the thing to stir the soil on rose and carnation benches, etc. Ea., 10c; doz., 75c.

Hazeltine. Solid steel blade. First rate tool to weed and clean onions. Ea., 20c; doz., \$2.00.

Lange. Small, but very handy. Each, 20c; doz., \$2.00.

Weeding Fork. English. Each, 10c.



WHEAT SHEAVES.

FLAT. Made from select new wheat and of superior workmanship. A sample lot will prove their quality and secure for us your future orders.

No. 4, each, \$0.15
" 5, 17 inch .25
" 6, 18 " .35
" 7, 21½ " .45
" 8, 24 " .55
" 9, 26 " .70
" 10, 28 " .90

WHEAT, Loose, bleached. Per lb. .50

WIRE. Bright Annealed.

Subject to change without notice.

No. 20, per lb., 10c; per stone of 12 lbs., \$0.80
" 22, " " 10c; " " .85
" 24, " " 10c; " " .90
" 26, " " 12c; " " 1.00
" 27 for tree labels, " 15c; " " 1.05
" 28, " " 15c; " " 1.15
" 36, " " 25c; " " 1.95

CUT WIRE IN WOODEN BOXES. (12 lbs. in box.)

This wire is prepared especially for florists. It is clean, extra soft, white wire, straightened and cut in lengths ready for immediate use and in convenient form.

Cut to 9 inches, No. 24, per box \$1.20
" 12 " No. 24, " 1.20
" 12 " No. 26, " 1.40
" 12 " No. 36, " 2.50

WIRE FLOWER-POT STANDS. In various sizes and styles. Write for special descriptive circular with prices and discounts.

WREATHS. French Green Moss. Every florist doing a retail trade should carry a stock of these. They are suitable for cemetery and other decorations and meet with ready sale. Their bright green color proves very attractive. A few immortelles added heightens the effect. Try a few for samples. 10 inch, round, each 15c; dozen, \$1.25.

NOTICE.—The prices herein named are subject to change without notice owing to fluctuations of market, particularly those on Fertilizers, Tin Foil and Wire.

FLORISTS' WIRE DESIGNS.

NEW PATTERNS AND LARGER SIZES.

General List, see next page.

BROKEN COLUMN

Inch	Price	Inch	Price
42	\$1.00	48	\$1.35

BROKEN WREATH WITH SICKLE

On Base			
12	.45	18	.85
14	.55	20	1.00
16	.70	24	1.25

BROKEN WREATH WITH SICKLE

On Stand.			
12	.38	18	.70
14	.45	20	.85
16	.60	24	1.15

CHAIR
Very Complete, with Double Legs
36..... 2.25

CORNUCOPIA—LYRE

On Base			
18	1.00	24	1.50
21	1.25	30	2.00

CRESCENTS

Inch	Price	Inch	Price
14	\$.12	20	\$.25
16	.15	22	.30
18	.20	24	.35

COLUMBIA KNIGHTS

Design on Easel (Measure of Wreath)			
14	.50	18	.70
16	.60	20	.85

CHRISTIAN ENDEAVOR

On Base			
14	.30	18	.55
16	.40	20	.75

MYSTIC SHRINE

On Easel (Measure of Crescent)			
14	.65	18	1.00
16	.85	21	1.25

KNIGHTS OF THE GLOBE

On Easel			
18	\$.085	24	\$1.50
21	.120		

EASELS

New Style, Folding, Legs			
15	.06	27	.15
18	.08	30	.18
21	.10	36	.24
24	.12	42	.30

MASONIC DESIGNS

On Reclining Stand			
12	.30	18	.60
14	.40	21	.80
16	.50	24	1.00

ROYAL ARCANUM

On Base			
12	.35	18	.70
14	.45	21	.90
16	.55	24	1.15

LADY MACCABEE

In Wreath, on Easel			
16	\$.55	20	\$.85
18	.70		

MACCABEE

Half Globe, on Easel			
16	.65	20	1.00
18	.85		

ROYAL ARCANUM

Single Frame, on Easel			
24	1.35	36	2.25

WOODMAN'S DESIGN

Half Round, on Easel			
24	1.50	36	2.50
30	2.00		

FLORISTS' WIRE DESIGNS.

GOOD WORKMANSHIP. PERFECT SHAPE. FULL ASSORTMENT.

CASH DISCOUNT.—We allow a discount of 10 per cent from this list if paid in 10 days, otherwise prices are net. On large orders a special discount will be made.

ANCHORS

Flat		On Base	
Inch	Price	Inch	Price
8	\$.06	20	\$.18
10	.08	22	.20
12	.10	24	.23
14	.12	30	.35
16	.14	36	.55
18	.16		
On Base		On Reclining Stand	
8	.10	20	.25
10	.12	22	.30
12	.15	24	.35
14	.18	30	.55
16	.21	36	.75
18	.23		
On Base with Star above		On Base with Scroll for Lettering	
10	.21	18	.40
12	.24	20	.50
14	.28	22	.60
16	.32	24	.75

ANCHOR AND CROSS

10	.08	18	.16
12	.10	20	.18
14	.12	22	.21
16	.14	24	.25
On Base		On Reclining Stand	
10	.15	18	.30
12	.18	20	.35
14	.21	22	.40
16	.25	24	.45

BROKEN COLUMNS

12	.15	24	.38
15	.18	30	.55
18	.23	36	.75
21	.30		
With Broken Anchor and Star—Flat		With Wreath Entwined	
24	.55	30	1.10
27	.85	36	1.50
24	.50	30	1.00
27	.75	36	1.25

BROKEN LINK

12	.13	18	.21
15	.17		

BANNERS

24	.45	36	.65
30	.55	42	.85

BASES

5	.05	9	.15
6	.06	10	.20
7	.08	11	.30
8	.10	12	.40

HANDLE BASKETS

Round		Doz	
Inch	Price	Inch	Price
4	.30	8	.75
5	.40	9	.90
6	.50	10	1.10
7	.60	12	1.35

Handle Baskets—Continued.

Oral		Doz	
Inch	Price	Inch	Price
6	.50	9	1.00
7	.65	10	1.25
8	.80	12	1.50

HANGING BASKETS

Plain Top		Doz	
Inch	Price	Inch	Price
6	.75	12	1.75
8	1.10	14	2.25
10	1.50	16	2.75
With Fancy Top		Doz	
6	.90	14	2.75
8	1.25	16	3.25
10	1.75	18	4.00
12	2.10		
Fancy Top, New Style		Doz	
10	2.50	12	3.00

BELLS

Single Frame		Doz	
Inch	Price	Inch	Price
8	.17	15	.35
10	.20	18	.55
12	.25	21	.75
Double Frame		Doz	
8	.25	15	.55
10	.35	18	.75
11	.45	21	.95
Single (for Christmas)		Doz	
5	.40	7	.75
6	.55		

BIBLES OR BOOKS

Inch	Price	Inch	Price
8x12	.18	12x20	.40
10x16	.25	14x24	.50
On Stamp		Doz	
12x20	.65	14x24	.85

BICYCLES

(Measurement of Wheel)

15	1.50	25	4.50
20	2.50		

BOUQUET FRAMES

Flat		Doz	
Inch	Price	Inch	Price
5	.04	10	.09
6	.05	12	.11
8	.07	14	.14

BOW AND ARROW

18	.25	30	.35
24	.30	36	.50

BROKEN WHEEL

15	.30	24	.75
18	.40	30	1.00
21	.50	36	1.35
On Basket		Doz	
18	1.00	24	1.50

BROKEN WREATH

With Sickle on Base

12	.45	16	.70
14	.55		

CANOPIES

Round		Doz	
Inch	Price	Inch	Price
30	.75	36	1.00
Square		Doz	
30	1.00	36	1.50

CASKET CROSS

12	.12	21	.21
15	.15	24	.25
18	.18	30	.30
On Base		Doz	
12	.20	21	.40
15	.25	24	.50
18	.30	30	.65

CHAIRS

Single Legs		Doz	
Inch	Price	Inch	Price
18	.45	24	.70
21	.55	30	.90
Very Complete, Double Legs		Doz	
18	.65	24	1.25
21	.75	30	1.75

CRESCENTS

8	.05	14	.12
10	.07	16	.15
12	.09	18	.20
On Base (Measure of Crescent)		Doz	
10	.15	18	.35
12	.20	18	.45
14	.25		

CRESCENT WREATHS.

10	.07	18	.20
12	.11	20	.25
14	.13	24	.35
16	.15		
On Base (Measure of Wreath)		Doz	
10	.15	18	.45
12	.20	20	.55
14	.27	24	.75
16	.35		

CRESCENT WITH DOVE

On Base (Measure of Crescent)

21	1.00		
----	------	--	--

CROSSES

Flat		Doz	
Inch	Price	Inch	Price
8	.24	22	.10
10	.03	24	.12
12	.04	27	.15
14	.05	30	.20
16	.06	33	.30
18	.07	36	.40
20	.08		
On Base (Measure of Cross)		Doz	
8	.08	22	.24
10	.10	24	.27
12	.12	27	.35
14	.15	30	.45
16	.18	33	.55
18	.20	36	.65
20	.22		
On Reclining Stand		Doz	
8	.06	22	.22
10	.09	24	.25
12	.12	27	.30
14	.14	30	.40
16	.16	33	.50
18	.18	36	.60
20	.20		

Broken, with Sickle

Each	.50		
------	-----	--	--

Broken, with Sword

Each	.45		
------	-----	--	--

CROSS AND CROWN

Measure of Crown

12	.30	18	.50
15	.40	21	.75

CROWNS

Flat		Doz	
Inch	Price	Inch	Price
8	.15	12	.25
10	.20	15	.30
Flat, on Base		Doz	
8	.20	12	.40
10	.30	15	.50

Round

7	.20	11	.40
9	.30	13	.50
Round, on Base		Doz	
7	.30	11	.50
9	.40	13	.60
Round, on Bent Star		Doz	
9	.50	11	.75

MALTESE CROSSES

6	.05	16	.15
8	.07	18	.18
10	.09	20	.25
12	.11	24	.45
14	.13		
On Base (Measure of Cross)		Doz	
6	.10	16	.30
8	.12	18	.40
10	.15	20	.50
12	.20	24	.70
14	.25		

SLANTING CROSSES

12	.05	24	.15
14	.06	27	.20
16	.07	30	.30
18	.08	33	.40
20	.10	36	.50
22	.12		
On Base (Measure of Cross)		Doz	
12	.12	24	.35
14	.15	27	.40
16	.18	30	.50
18	.20	33	.65
20	.25	36	.85
22	.30		

EASELS

15	.05	27	.12
18	.06	30	.15
21	.08	36	.21
24	.10		

FOUR LEAF CLOVER

Flat		Doz	
Inch	Price	Inch	Price
10	.20	15	.40
12	.30		
On Base		Doz	
10	.30	15	.50
12	.40		

FAITH HOPE AND CHARITY

Three Pieces, Separate

20	.45	30	.85
25	.65	36	1.10
New York Style Combined Flat		Doz	
16	.20	24	.50
20	.35		

FIREMAN'S HAT

Regular size

Each	.55		
------	-----	--	--

FLORISTS' WIRE DESIGNS—Continued.

FIREMAN'S TRUMPET

15.....	20	21.....	40
18.....	30	24.....	50

GATES AJAR

Single Arch, Double Gates			
Base	Base		
15.....	45	21.....	85
18.....	65	24.....	1.10
Double Arch			
15.....	55	27.....	1.50
18.....	75	30.....	1.75
21.....	1.00	33.....	2.00
24.....	1.20	36.....	2.50

GRAND ARMY OF THE REPUBLIC

Badge on Easel			
30.....	1.10	36.....	1.25

GYPSY KETTLE

28.....	40	36.....	60
---------	----	---------	----

HARPS

Flat Base			
10.....	.08	21.....	.30
12.....	.12	24.....	.40
15.....	.15	30.....	.50
18.....	.20	36.....	.75

On Round Base (Measure of Harp)			
10.....	.15	21.....	.40
12.....	.20	24.....	.55
15.....	.25	30.....	.80
18.....	.30	36.....	1.25

On Reclining Stand			
10.....	.14	18.....	.27
12.....	.18	21.....	.35
15.....	.22	24.....	.45

HEARTS

8.....	.03	14.....	.09
8.....	.04	16.....	.12
10.....	.05	18.....	.18
12.....	.07		
On Base (Measure of Heart)			
6.....	.08	14.....	.25
8.....	.10	16.....	.30
10.....	.14	18.....	.40
12.....	.20		

On Reclining Stand			
6.....	.07	14.....	.20
8.....	.09	16.....	.25
10.....	.12	18.....	.30
12.....	.15		

OPEN HEARTS

8.....	.09	14.....	.16
10.....	.11	16.....	.20
12.....	.13	18.....	.30

On Base			
8.....	.15	14.....	.27
10.....	.18	16.....	.40
12.....	.21	18.....	.55

On Reclining Stand			
8.....	.12	14.....	.25
10.....	.15	16.....	.35
12.....	.20	18.....	.45

Broken—With Sickle			
On Base	On Base		
14.....	.50	16.....	.55
18.....	.65		

HOURLY GLASS

Half Round			
12.....	.25	16.....	.35
14.....	.30	18.....	.45

In Arch			
Round.....			.95

HORSESHOES

With Folding Stand			
6.....	.05	15.....	.20
8.....	.07	20.....	.25
10.....	.09	24.....	.40
12.....	.11	30.....	.60
14.....	.13	36.....	1.00
16.....	.16		

KEYSTONE

12.....	.12	21.....	.25
15.....	.15	24.....	.35
18.....	.20		

On Easel			
12.....	.25	21.....	.40
15.....	.25	24.....	.50
18.....	.30		

KNIGHTS OF PYTHIAS

New Style			
Inch	Price	Inch	Price
20.....	1.00	24.....	1.25
Old Style			
24.....	2.25	30.....	3.00

KNIGHTS TEMPLAR

On Easel			
20.....	.75	24.....	1.00

KNIGHTS OF LABOR

18.....	.25	20.....	.30
---------	-----	---------	-----

LADDER

With Folding Stand			
24.....	.45	36.....	.65
30.....	.55		

LETTERS

Single Wire			
3.....	.01	7.....	.03
4.....	.01½	8.....	.03½
5.....	.02	10.....	.04
6.....	.02½	12.....	.05

Flat, Two Wires			
5.....	.06	8.....	.10
6.....	.08	10.....	.12

Double Frame			
5.....	.08	10.....	.15
6.....	.10	12.....	.20
8.....	.12		

LOVERS' KNOT

Single Frame			
24.....	.25	30.....	.35
36.....	.45		

Double Frame			
24.....	.40	30.....	.60
36.....	.80		

LYRES

Flat			
10.....	.10	18.....	.25
12.....	.15	21.....	.35
15.....	.20	24.....	.45

On Base			
10.....	.18	21.....	.45
12.....	.21	24.....	.65
15.....	.25	30.....	1.00
18.....	.35	36.....	1.25

On Reclining Stand			
10.....	.15	18.....	.30
12.....	.18	21.....	.40
15.....	.24	24.....	.50

On Base, with Star Above			
12.....	.25	18.....	.45
15.....	.35	21.....	.60

MANTEL BASKETS

10.....	.09	15.....	.14
12.....	.11	18.....	.18

MASONIC DESIGNS

Inch	Price	Inch	Price
12.....	.20	16.....	.35
14.....	.25	18.....	.45

18.....	.30	24.....	.45
21.....	.40		

On Base			
18.....	.45	24.....	.70
21.....	.55		

MONUMENTS

15.....	.20	24.....	.35
18.....	.25	30.....	.55
21.....	.30	36.....	.75

PALETTE ON EASEL			
Double Frame			
12.....	.25	16.....	.45
14.....	.35		

PILLOWS

10.....	.07	21.....	.25
12.....	.10	24.....	.30
14.....	.14	27.....	.40
16.....	.17	30.....	.60
18.....	.20	36.....	.80

With Anchor and Star			
12.....	.20	16.....	.40
14.....	.30	18.....	.50

With Heart, Star or Cross Above			
10.....	.17	14.....	.25
12.....	.20	16.....	.30
18.....	.35		

PILLOWS—Continued.

With Crown			
Flat Crown			
Round Crown			
14.....	.35	14.....	.45
16.....	.45	16.....	.55
18.....	.55	18.....	.65

With Lyre or Harp			
14.....	.30	18.....	.45
16.....	.35		

With Faith, Hope and Charity			
New York			
Separate			
Inch	Price	Inch	Price
8.....	.50	18.....	.75

With Gates Ajar, Single Arch			
5.....	.70	21.....	1.20
8.....	.85	24.....	1.50

With Gates Ajar, Double Arch			
5.....	.85	21.....	1.35
8.....	1.00	24.....	1.75

PYRAMIDS

9.....	.10	18.....	.20
12.....	.12	21.....	.25
15.....	.15	24.....	.35

ROCK OF AGES

32 plain.....	.50		
32 with basket.....	.90		

ROYAL ARCANUM

24.....	1.00	42.....	1.75
---------	------	---------	------

SCALES OF LIFE

24.....	.80	36.....	1.25
30.....	1.00	42.....	1.75

SCROLLS

Single Frame			
18.....	.30	21.....	.45

Double Frame			
18.....	.50	24.....	.80
21.....	.65	30.....	1.10

SHEPHERD'S CROOK			
24.....	.25	36.....	.45
30.....	.35	42.....	.55

SHIELDS

12.....	.10	18.....	.18
15.....	.14	21.....	.25

On Base			
12.....	.18	18.....	.35
15.....	.25	21.....	.45

SICKLES

Flat			
10.....	.07	21.....	.20
12.....	.09	24.....	.30
15.....	.11	27.....	.40
18.....	.15	30.....	.65

On Base			
10.....	.15	21.....	.35
12.....	.18	24.....	.50
15.....	.21	27.....	.65
18.....	.27	30.....	1.00

SICKLES

On Easel			
Inch	Price	Inch	Price
12.....	.16	24.....	.50
15.....	.20	27.....	.60
18.....	.27	30.....	.90
21.....	.35		

On Base with Broken Cross			
18.....	.50		

Square Frame, with Sickle			
On Easel			
20x24.....	1.10	24x30.....	1.50

STARS

Flat			
6.....	.03	14.....	.11
8.....	.05	16.....	.13
10.....	.07	18.....	.18
12.....	.09		

On Stand, Slanting			
6.....	.06	12.....	.12
8.....	.08	14.....	.16
10.....	.10	16.....	.25

On Base			
6.....	.08	12.....	.15
8.....	.10	14.....	.20
10.....	.12	16.....	.25

STAR AND CRESCENT

Old Style			
10.....	.24	18.....	.60
12.....	.28	21.....	.80
14.....	.35	24.....	1.00
18.....	.45		

Star and Crescent—Continued.

On Base—New Style			
10.....	.24	18.....	.60
12.....	.28	21.....	.80
14.....	.35	24.....	1.00
16.....	.45		

On Easel with Scroll			
12.....	.35	16.....	.55
14.....	.45	18.....	.75

On Stand with Bar for Lettering			
10.....	.24	16.....	.45
12.....	.28	18.....	.60
14.....	.35	21.....	.80

TABLET WITH CLOSED BOOK

24.....			.75
---------	--	--	-----

TRELLIS

15.....	.15	27.....	.30
18.....	.18	30.....	.35
21.....	.22	36.....	.50
24.....	.25		

TRIANGLES

10.....	.09	16.....	.17
12.....	.11	18.....	.20
14.....	.13		

On Base			
10.....	.15	16.....	.30
12.....	.20	18.....	.40
14.....	.25		

On Reclining Stand			
10.....	.13	16.....	.30
12.....	.18	18.....	.35
14.....	.23		

FALL BULBS

for FORCING

WE import, in due season, large quantities of LIL. HARRISII, ROMAN HYACINTHS, LILIES, TULIPS, DUTCH HYACINTHS, etc., and invite the attention of Florists to this stock now. We can make it an advantage for customers to send us early an estimate of their wants in this line, on which we will submit prices. Our stocks are purchased from the most reliable growers only, and our import prices will be found as low as first-class stock can be supplied. Try us on prices before you place any orders elsewhere.



PLANTS for FORCING

READY FOR DELIVERY IN OCTOBER

AZALEA INDICA. We import only the leading varieties used by florists. If your order is placed early you are more certain to secure desired varieties. Prices on application.

LILACS. Best forcing sorts, such as Chas. X, red; and Marie Legraye, white.

ROSES. H. P. (dormant) and Crimson Ramblers.



AZALEA INDICA

GREEN AND HOLLY

This we offer for the Holiday Trade by the case, crate, ton or carload. Our facilities for furnishing stock of best quality and as wanted are not surpassed. Please get our prices before placing your orders.

