

Historic, archived document

Do not assume content reflects current scientific knowledge, policies, or practices.

62.09

WHOLESALE
PRICE LIST
SPRING of 1918

For
Nurserymen
Only



California Nursery Co.
NILES, CALIFORNIA

W. V. EBERLY
Manager

Announcement

These nurseries have been established and in active operation at Niles, California, since 1884. They are located on a tract of land comprising 465 acres, the soil being regarded as the cream of Alameda County. Time has established the fact that the late John Rock, who was the guiding spirit of this enterprise from the year of its inception until his death in 1904—having come here from Wayne, Santa Clara County, where he had been conducting the largest nursery in the State for a period of twenty years—acted wisely in selecting this favored spot. That nurserymen and business men like R. D. Fox, Thomas Meherin, James Hutchinson and William J. Landers should have become associated with Mr. Rock in this great enterprise, was a sufficient indication of their confidence in the future of this place for the development of a great and thriving nursery business. That this selection was a wise one has been fully demonstrated, for it is very rare indeed that it is possible for a nursery business to continue in one place for thirty-five years and succeed in growing successfully such an assortment of fruit and ornamental stocks—probably the largest and most complete in the United States.

Having a large and magnificent stock of ornamentals with soil of the very best character for balling, it has been considered advisable to broaden the scope of the business and not only seek to extend the already large business throughout the Pacific Coast States but to the Middle West and Eastern States as well. With this idea in view we are soliciting business. It goes without saying that our many years' experience places us in a position to thoroughly understand the preparation of stock and the packing of same, so that with ordinary care in transit, no matter what the distance may be, it should reach destination in good order.

In conclusion, we wish to say with our intimate knowledge of the nursery conditions throughout the state, that should there be anything wanted which we do not list it will be a pleasure for us to endeavor to find the stock and make a prompt response as to its availability and quote prices.

On all stock not quoted in this list we will allow the trade a discount of not less than twenty per cent from our regular price list which will be mailed on application; and in some instances more than this, depending on our supply of the particular stock for which inquiry is made.

CALIFORNIA NURSERY COMPANY.
W. V. EBERLY,
Manager.

Terms and Conditions

SHIPPING SEASON: Deciduous shade trees from November 1st to March 31st.

Evergreens from September 1st to May 31st.

Fruit Trees from December 1st to April 15th.

Roses from November 1st to April 30th.

Specimen trees may be forwarded at any season of the year provided we are given a few months' notice in advance to prepare such trees for shipment. However, we always have a large assortment of established stock on hand.

SHIPMENTS: Always state how you want us to ship—by freight or express; also designate the route. In the absence of instructions we will use our very best judgment but in no case will we assume any responsibility for safe or prompt delivery or any injury caused by delay on the part of the transportation companies.

TERMS: Firms unknown to us will either have to pay cash or give security, or furnish us with satisfactory references. Orders to be sent C. O. D. should be accompanied with one-fourth cash.

PRICES: Quotations in this catalog are net. No discount.

CAUTION: All orders are accepted with the express condition that they shall be void should any injury befall the stock ordered from any cause over which we have no control.

CLAIMS: All claims must be made within ten days after receipt of the goods, otherwise they will not be allowed.

PACKING: Prices in this list do not cover packing charges. Our charges are reasonable, however, and are made with a view to covering the cost of material only. No charges are made for delivery to the freight or express office.

REFERENCES: As to our standing and responsibility we refer to the Central National Bank of Oakland and the Mercantile National Bank of San Francisco.

SPECIAL NOTICE: We invite the closest inspection of our stock and our nurseries. Our office and grounds are on the State Highway less than a mile west of Niles. If coming by train take the Southern Pacific to Niles and telephone us from the station or notify us beforehand of the time of arrival and we will meet train with a conveyance.

TELEGRAPH and TELEPHONE: All telegrams should be addressed to the California Nursery Company, Niles, California. In telephoning call for California Nursery Company, Niles.

GUARANTEE: The California Nursery Company will exercise care to have all stock true to name, nevertheless it is understood and agreed that should any stock prove untrue to name, the California Nursery Company shall be liable only for the sum paid for the stock which may prove untrue, and shall not be liable for any greater amount.

All communications should be addressed to

CALIFORNIA NURSERY COMPANY,
NILES, CALIFORNIA.



A section of a block of Abies and Picea. Note how symmetrical they are.

Specimen Stock Conifers

All the plants listed under the heading SPECIMENS are very carefully selected. Our many years' experience in handling evergreens warrants us in saying to those who may favor us with their orders that we will send only stock that is sure to give satisfaction.

ABIES cephalonica. CEPHALONIAN FIR.

	Height in Feet	Each
boxed.....	12 to 14	\$12 00
boxed.....	10 to 12	10 00
boxed.....	8 to 10	9 00
boxed.....	7 to 8	8 00
boxed.....	6 to 7	7 50

A. concolor. WHITE FIR.

boxed.....	9 to 10	15 00
boxed.....	6 to 7	12 00
boxed.....	4 to 5	7 00

A. grandis. GRAND FIR

boxed.....	4 to 5	4 00
------------	--------	------

A. lasiocarpa. ALPINE FIR.

boxed.....	6 to 7	6 50
boxed.....	5 to 6	5 00
boxed.....	4½ to 5	3 50

A. nordmanniana. NORDMANN'S SILVER FIR.

boxed	}	Mostly very wide well-furnished specimens	10 to 12	30 00
boxed			8 to 10	20 00
boxed			7 to 8	16 00
boxed			5 to 6	7 50
boxed			4½ to 5	5 00

A. pinsapo. SPANISH FIR.	Height in Feet	Each
boxed.....	12 to 14	40 00
boxed.....	9 to 10	10 00
boxed.....	8 to 9	6 00
boxed.....	7 to 8	5 00
boxed.....	6 to 7	4 00
boxed.....	5 to 6	3 00

ARAUCARIA bidwilli. BUNYA BUNYA.

boxed.....	10 to 12	18 00
boxed.....	9 to 10	15 00
boxed.....	8 to 9	8 00
boxed.....	7 to 8	6 50

A. imbricata. MONKEY PUZZLE.

boxed.....	10 to 12	10 00
boxed.....	8 to 9	7 50
boxed.....	7 to 8	6 50
boxed.....	6 to 7	5 00
boxed.....	5 to 6	4 00

CEDRUS atlantica. MT. ATLAS CEDAR.

boxed.....	14 to 16	20 00
boxed.....	12 to 14	15 00

C. deodara. INDIAN CEDAR.

boxed.....	14 to 16	20 00
boxed.....	12 to 14	15 00
boxed.....	10 to 12	8 00
boxed.....	9 to 10	7 00
boxed.....	8 to 9	6 00
boxed.....	7 to 8	5 00

C. libani. CEDAR OF LEBANON.

boxed.....	16 to 18	18 00
boxed.....	14 to 16	15 00
boxed.....	12 to 14	12 00
boxed.....	10 to 12	8 00

CEPHALOTAXUS pedunculata fastigiata. JAPAN-ESE YEW.

boxed.....	3 to 3½	4 00
------------	---------	------

CHAMAECYPARIS lawsoniana. LAWSON CYPRESS.	Height in Feet	Each
boxed.....	10 to 12	6 00
boxed.....	9 to 10	5 00
boxed.....	8 to 9	4 00
boxed.....	7 to 8	3 50
boxed.....	6 to 7	3 00

(RETINISPORAS).

C. pisifera plumosa viridis.	Height in Feet	Each
boxed.....	6 to 7	6 00
boxed.....	5 to 6	5 00

CRYPTOMERIA japonica elegans. (Standards)	Height in Feet	Each
boxed.....36 in. stem, 44 in. head		5 00
boxed.....36 in. stem, 42 in. head		4 00
boxed.....42 in. stem, 36 to 42 in. head		3 50
boxed.....36 in. stem, 36 in. head		3 00
boxed.....36 in. stem, 24 to 30 in. head		2 00
(Bushes)		
boxed.....	8 to 10	5 00
boxed.....	6 to 7	4 00
boxed.....	5 to 6	3 00



A standard Cryptomeria japonica elegans. Note how well this plant is balled. We have the combination of soil and know how.

CUPRESSUS: Cypress.

C. arizonica.		
boxed.....	4 to 5	2 00
C. guadalupensis glauca.		
boxed.....	7 to 8	6 00
boxed.....	6 to 7	5 00
boxed.....	5 to 6	4 00

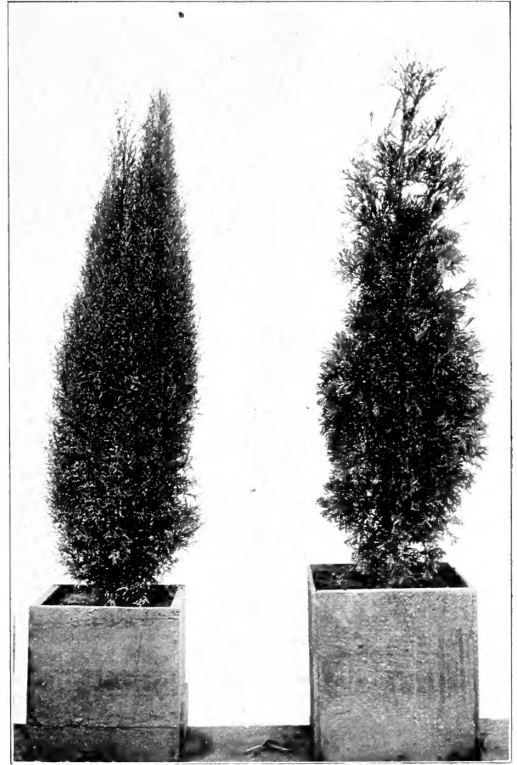
C. sempervirens fastigiata. ITALIAN CYPRESS.

Height in Feet	Each
boxed.....	11 to 12 6 00
boxed.....	10 to 11 5 00
boxed.....	9 to 10 4 50
boxed.....	8 to 9 3 50
boxed.....	7 to 8 3 00
boxed.....	6 to 7 2 50

This particular lot are a very fine type.

JUNIPERUS communis hibernica. IRISH JUNIPER.

boxed.....	5½ to 6	3 00
boxed.....	5 to 5½	2 50
boxed.....	4½ to 5	2 00



Libocedrus decurrens and Cupressus arizonica established in boxes.

LIBOCEDRUS decurrens. INCENSE CEDAR.

boxed.....	14 to 16	12 00
boxed.....	10 to 12	8 00
boxed.....	8 to 10	6 00
boxed.....	7 to 8	5 00
boxed.....	6 to 7	4 50

PICEA: Spruce.

P. engelmanni		
boxed.....	8 to 10	6 00
boxed.....	6 to 8	5 00

P. excelsa. NORWAY SPRUCE.

boxed.....	12 to 14	6 00
boxed.....	10 to 12	5 00
boxed.....	9 to 10	4 50
boxed.....	8 to 9	4 00
boxed.....	7 to 8	3 00
boxed.....	6 to 7	2 50
boxed.....	5 to 6	2 00

PINUS: Pine.	Height in Feet	Each
P. pinea. ITALIAN STONE PINE.		
boxed.....	3 to 4	2 00

SEQUOIA gigantea. CALIFORNIA BIG TREE.

boxed	All beautiful specimens	14 to 16	20 00
boxed		12 to 14	18 00
boxed		11 to 12	15 00
boxed		10 to 11	12 00
boxed		8 to 9	9 00

S. gigantea glauca

boxed.....	8 to 10	15 00
boxed.....	7 to 8	12 00
boxed.....	6 to 7	10 00
boxed.....	5 to 6	8 00

S. sempervirens. REDWOOD.

boxed.....	11 to 12	8 00
boxed.....	10 to 11	7 00
boxed.....	9 to 10	6 00
boxed.....	8 to 9	5 00
boxed.....	7 to 8	4 00



Here the Occident and Orient mingle together. The tree in the foreground is a Sequoia gigantea (California Big Tree). It is 18 ft. high and in a 30 x 30 inch box, ready to be moved to the large lath house. Packed ready for shipment it will weigh two thousand pounds. The trees just back of it are Cedrus libani (Cedar of Lebanon.)

TAXUS: Yew.	Height in Feet	Each
T. baccata. ENGLISH YEW.		
boxed.....	6 to 7	5 00
boxed.....	5 to 6	4 00
boxed.....	4 to 4½	3 00
T. baccata elegantissima.		
boxed.....	4 to 4½	3 00
boxed.....	3 to 3½	2 50
boxed.....	2½ to 3	2 00
T. baccata erecta.		
boxed.....	6 to 7	5 00



Just to give an idea of the fine type of our evergreens. Reading from left to right: Juniperus sabina; Bambusa aurea; Cotoneaster microphylla.

T. baccata fastigiata. IRISH YEW.		
boxed.....	5 to 5½	5 00
boxed.....	4½ to 5	4 00
T. baccata washingtoni.		
boxed.....	4½ to 5	3 00
boxed.....	3½ to 4	2 50
THUJA: Arbor Vitae.		
T. gigantea. GIANT ARBOR VITAE.		
boxed.....	10 to 12	8 00
boxed.....	9 to 10	6 00
boxed.....	8 to 9	5 00
boxed.....	7 to 8	4 00
T. gigantea aurea.		
boxed.....	8 to 10	7 00
boxed.....	7 to 8	6 00
boxed.....	6 to 7	4 00
T. orientalis. CHINESE ARBOR VITAE.		
boxed.....	7 to 8	3 00
boxed.....	6 to 7	2 50
boxed.....	5 to 6	2 00
T. orientalis aurea variegata.		
boxed.....	8 to 10	5 00
boxed.....	7 to 8	4 00
T. orientalis pendula.		
boxed.....	7 to 8	4 00
boxed.....	6 to 7	3 00



Ilex aquifolium and *Araucaria imbricata* in congenial companionship. They are hard to beat.

Specimen Broad-Leaved Evergreens

AUCUBA japonica variegata. GOLD DUST PLANT.			
	Height in Feet		Each
boxed.....	3 to 4		1 50
A. japonica viridis latifolia.			
boxed.....	4 to 5		1 50
boxed.....	3 to 4		1 25
AZARA microphylla.			
boxed.....	16 to 18		10 00
boxed.....	12 to 14		7 50
boxed.....	10 to 12		6 00
boxed.....	8 to 10		4 00
BUXUS sempervirens. BOXWOOD. (Standards)			
boxed.....	19 in. stem, 18 in. head		2 25
boxed.....	20 in. stem, 14 in. head		2 00
boxed.....	18 in. stem, 12 in. head		1 75
boxed (Pyramids).....	4½ to 5		10 00
boxed (Pyramids, round) 18 in. high, 14 in. base			1 75
boxed (Globes).....	15 in. high, 15 in. diameter		1 50
boxed (Bushes).....	2½ to 3		2 50
boxed.....	1 to 1½		1 50
CAMPHOR officinalis.			
boxed.....	8 to 10		3 00
boxed.....	7 to 8		2 00
COPROSMA baueri.			
boxed.....	3 to 4		2 00
COTONEASTER horizontalis.			
boxed.....	3 to 4		2 00
C. pannosa.			
boxed.....	6 to 8		3 00
ELAEAGNUS pungens variegata.			
boxed.....	3 to 4		2 00

ESCALLONIA rubra.	Height in Feet		Each
boxed.....	2 to 2½		1 50
ILEX aquifolium. ENGLISH HOLLY.			
boxed.....	This is fine, bushy stock	8 to 9	8 00
boxed.....		7 to 8	6 00
boxed.....		6 to 7	4 00
I. aquifolium Golden-Margined.			
boxed.....	7 to 8		8 00
boxed.....	6 to 7		6 00
I. aquifolium Golden-Variiegated.			
boxed.....	6 to 7		6 00
I. aquifolium Silver-Margined.			
boxed.....	8 to 10		10 00
boxed.....	6 to 7		6 00
LAURUS nobilis. BAY TREE. (Light Standards).			
potted.....	42 in. stem, 18 in. head		1 50
MAGNOLIA grandiflora.			
boxed.....	6 to 8		3 00
M. grandiflora lanceolata.			
boxed.....	6 to 8		4 00
PITTIOSPORUM crassifolium.			
boxed.....	7 to 8		3 00
P. eugenoides (standards).			
boxed.....	5 to 6		2 75
boxed.....	4 to 5		2 50
P. tenuifolium. (<i>P. nigricans</i>).			
boxed.....	8 to 10		3 00
boxed.....	7 to 8		2 00
P. tobira variegatum.			
boxed.....	3 to 4		2 00

PRUNUS laurocerasus latifolia.	Height in Feet	Each
boxed.....	9 to 10	6 00
boxed.....	8 to 9	5 00
boxed.....	7 to 8	4 00
boxed.....	6 to 7	3 00
P. laurocerasus rotundifolia.		
boxed.....	8 to 10	4 00
boxed.....	7 to 8	3 00
boxed.....	6 to 7	2 50
P. lusitanica. PORTUGAL LAUREL.		
boxed.....	7 to 8	3 00
boxed.....	6 to 7	2 50
PYRACANTHA crenulata. CHINESE EVERGREEN HAWTHORN.		
boxed.....	6 to 8	3 00
boxed.....	5 to 6	2 00
VIBURNUM tinus lucidum. (Laurustinus grandiflora).		
boxed.....	6 to 8	2 00
V. strictum (L. rotundifolia).		
boxed.....	6 to 8	1 50

POPULUS deltoides carolinensis. CAROLINA POP-LAR.	Dia. in Ins.	Each
.....	3 to 4	1 50
.....	2½ to 3	1 00
.....	2 to 2½	80
P. nigra italica. LOMBARDY POPLAR.		
.....	4 to 6	2 00
.....	2½ to 3	1 25
.....	2 to 2½	1 00
ULMUS americana. AMERICAN or WHITE ELM.		
.....	4 to 6	2 50
.....	3 to 4	2 00
.....	2½ to 3	1 50
U. scabra huntingdoni. HUNTINGDON'S ELM.		
.....	4 to 6	3 00
.....	2½ to 3	2 50
.....	2 to 2½	2 00



European White Birch, Silver Maple and Poplars.

Specimen Deciduous Ornamental Trees

ACER saccharinum. SILVER MAPLE.	Dia. in Ins.	Each
.....	2½ to 3	1 50
.....	2 to 2½	1 25
A. saccharum SUGAR MAPLE.		
.....	2½ to 3	2 00
.....	2 to 2½	1 50
BETULA alba. EUROPEAN WHITE BIRCH.		
.....	3 to 4	3 00
.....	2½ to 3	2 00
.....	2 to 2½	1 50

Weeping Trees

POPULUS tremula pendula. WEEPING POPLAR.		
.....	3 to 4	2 50
.....	2 to 2½	2 00
.....	1½ to 2	1 75
.....	1 to 1½	1 25
ULMUS scabra pendula. CAMPERDOWN ELM.		
.....	3 to 4	4 00
.....	2½ to 3	3 00
.....	2 to 2½	2 00



A fine type of Weeping Poplar close to the bungalow of the president of the company.

Specimen Palms

CHAMAEROPS humilis. DWARF FAN PALM.			
	Height in Feet	Each	
One of the hardiest of palms and very desirable for porch decoration and grouping.			
boxed.....	5 to 6	3 00	
boxed.....	4 to 5	2 50	
C. humilis argentea.			
boxed.....	5 to 6	3 00	
boxed.....	4 to 5	2 50	
COCOS australis (C. eriospatha).			
boxed	Slow growing; very hardy; exceedingly graceful.	8 to 9	15 00
boxed		5 to 6	7 00
boxed		4 to 5	5 00
C. bonneti.			
boxed.....	8 to 9	15 00	
boxed.....	4 to 5	4 00	
C. flexuosa.			
boxed.....	7 to 8	5 00	
boxed.....	6 to 7	4 00	
ERYTHEA armata. BLUE PALM.			
boxed.....	7 to 8	6 00	
E. edulis.			
boxed.....	7 to 8	6 00	
JUBAEA spectabilis.			
boxed.....	9 to 10	12 00	
PHOENIX canariensis. CANARY ISLAND DATE PALM.			
boxed	A rapid growing, very graceful palm.	16 to 18	50 00
boxed		8 to 9	6 00
boxed		7 to 8	4 00
boxed		6 to 7	3 00
boxed		5 to 6	2 50

SABAL blackburniana.	Height in Feet	Each	
boxed.....	6 to 7	4 00	
S. macrophylla.			
boxed.....	5 to 6	3 00	
S. palmetto.			
boxed.....	5 to 6	3 00	
TRACHYCARPUS (Chamaerops).			
T. excelsa WIND MILL PALM.			
boxed.....	}	6 to 7	4 00
boxed.....		5 to 6	3 00
boxed.....		4 to 5	2 50
boxed.....		3 to 4	1 50
T. fortunei. Will remain in a small box for several years without losing its symmetry and beauty.			
boxed.....	}	6 to 7	3 50
boxed.....		5 to 6	2 00
boxed.....		4 to 5	1 50
boxed.....		4 to 5	2 00
T. nepalensis.			
boxed.....	8 to 9	5 00	
boxed.....	6 to 7	4 00	
boxed.....	5 to 6	3 00	
boxed.....	4 to 5	2 00	
WASHINGTONIA filifera robusta. CALIFORNIA FAN PALM.			
boxed.....	7 to 8	3 00	
boxed.....	6 to 7	2 00	
boxed.....	5 to 6	1 50	
W. gracilis.			
boxed.....	18 to 20	40 00	
boxed.....	14 to 16	15 00	
boxed.....	8 to 10	5 00	
boxed.....	6 to 8	4 00	

Dracaenas

CORDYLINE australis. (Dracaena australis; D. indivisa).		
boxed.....	12 to 14	7 00
boxed.....	9 to 10	5 00
boxed.....	8 to 9	4 00
boxed.....	7 to 8	3 00



A Chamaerops humilis palm boxed for shipment. This is a specimen 4 to 5 ft. plant and will weigh when packed in the neighborhood of 150 lbs.



Just a small section of one of our blocks of Taxus of the following varieties: *T. baccata fastigiata*; *T. baccata fastigiata variegata*; *T. baccata Washingtoni*; *T. baccata elegantissima*.

Evergreen Trees General Collection Coniferous Trees

ABIES: Fir.

A. concolor. WHITE FIR.

	Height in Feet	Per 10	Per 100
balled.....	2½ to 3	20 00	
balled.....	2 to 2½	12 50	100 00
balled.....	1½ to 2	10 00	80 00

A. firma.

balled.....	3½ to 4	20 00	
balled.....	2½ to 3	17 50	
balled.....	2 to 2½	12 50	
balled.....	1½ to 2	10 00	

A. lasiocarpa. ALPINE FIR.

balled.....	4½ to 5	30 00	
-------------	---------	-------	--

A. nobilis glauca.

balled.....	1 to 1½	20 00	
-------------	---------	-------	--

A. nordmanniana.

balled.....	3½ to 4	30 00	250 00
-------------	---------	-------	--------

A. nordmanniana. NORDMANN'S SILVER FIR.

balled.....	3 to 3½	25 00	200 00
balled.....	2 to 3	20 00	175 00

A. picea (A. pectinata).

balled.....	1½ to 2	15 00	125 00
balled.....	1 to 1½	12 50	100 00

ARAUCARIA imbricata. MONKEY PUZZLE.

balled.....	3 to 4	30 00	
balled.....	2 to 3	20 00	

CEDRUS atlantica. MT. ATLAS CEDAR.

	Height in Feet	Per 10	Per 100
balled.....	5 to 6	20 00	
balled.....	4 to 5	17 50	150 00
balled.....	3 to 4	12 50	100 00

C. deodara. INDIAN CEDAR.

balled.....	1½ to 2	10 00	75 00
balled.....	1 to 1½	7 50	

C. libani. CEDAR OF LEBANON.

balled.....	1½ to 2	10 00	80 00
balled.....	1 to 1½	7 50	60 00

CEPHALOTAXUS pedunculata fastigiata. JAPANESE YEW.

balled.....	3 to 4	27 50	
balled.....	1 to 1½	12 50	100 00

CHAMAECYPARIS lawsoniana. LAWSON CYPRESS.

balled.....	5 to 6	17 50	
balled.....	4 to 5	12 50	
balled.....	3 to 4	10 00	

(RETINISPORAS)

C. pisifera plumosa aurea.

balled.....	1 to 1½	10 00	
-------------	---------	-------	--

C. pisifera plumosa viridis.

balled.....	2 to 2½	12 50	
balled.....	1½ to 2	10 00	

C. obtusa decussata.

balled.....	3 to 4	25 00	
-------------	--------	-------	--

C. sphaeroidea ericoides.

balled.....	2 to 2½	17 50	
balled.....	1½ to 2	12 50	
balled.....	1 to 1½	10 00	80 00
..... from 4 in. pots	8 to 12 in.	3 00	25 00

CRYPTOMERIA japonica elegans.
(bushes)

	Height in Feet	Per 10	Per 100
balled.....	4 to 5	20 00	175 00
balled.....	3 to 4	17 50	150 00
.....from 7 in. pots	3 to 4	7 50	60 00
.....from 6 and 7 in. pots	2½ to 3	6 00	45 00
.....from 4 in. pots	1½ to 2	3 00	22 50
.....from 4 in. pots	1 to 1½	2 25	17 50

These Cryptomerias are all very bushy and finely colored.

CUPRESSUS arizonica.

balled.....	3 to 4	15 00	
balled.....	2 to 3	10 00	

C. benthami knightiana.

.....from 6 in. pots	4 to 5	6 00	
.....from 6 in. pots	2 to 3	4 00	

C. glabra.

.....from 4 in. pots	1 to 1½	4 50	40 00
----------------------	---------	------	-------

C. guadalupensis glauca.

balled.....	5 to 6	22 50	
balled.....	4 to 5	20 00	
balled.....	3 to 4	17 50	

C. macrocarpa. MONTEREY CYPRESS.

balled.....	3 to 4	6 00	45 00
.....in flats of 100 1	1 to 1½		1 50

C. sempervirens fastigiata. ITALIAN CYPRESS.

balled.....	5 to 6	17 50	125 00
balled.....	4 to 5	15 00	100 00

JUNIPERUS chinensis. JAPANESE JUNIPER.

balled.....	3 to 4	20 00	
balled.....	2½ to 3	17 50	
balled.....	2 to 2½	15 00	
balled.....	1 to 1½	10 00	
balled.....	8 to 12 in.	7 50	

J. communis hibernica. IRISH JUNIPER.

	Height in Feet	Per 10	Per 100
balled.....	4 to 5	15 00	125 00
balled.....	3 to 4	12 50	100 00
.....from 6 in. pots	2 to 2½ in.	5 00	

LIBOCEDRUS decurrens. INCENSE CEDAR.

balled.....	4 to 5	20 00	
balled.....	3 to 4	15 00	
balled.....	2 to 3	12 50	

PICEA excelsa. NORWAY SPRUCE.

balled.....	6 to 7	20 00	175 00
balled.....	5 to 6	15 00	125 00
balled.....	4 to 5	12 50	100 00

P. orientalis. ORIENTAL SPRUCE.

balled.....	3 to 4	25 00	
balled.....	2 to 3	20 00	175 00
balled.....	1 to 2	17 50	150 00

P. polita. TIGER TAIL SPRUCE.

balled.....	3 to 4	17 50	
balled.....	2 to 3	12 50	100 00
balled.....	1½ to 2	10 00	

PINUS pinea. ITALIAN STONE PINE.

balled.....	3 to 4	9 00	75 00
balled.....	2 to 3	7 50	60 00

SEQUOIA sempervirens. REDWOOD.

balled.....	5 to 6	25 00	
balled.....	3 to 4	12 50	100 00
balled.....	2 to 3	10 00	80 00
balled.....	1½ to 2	8 00	60 00

TAXUS baccata. ENGLISH YEWE.

balled.....	5 to 6	30 00	225 00
balled.....	2 to 2½	12 50	100 00
balled.....	1½ to 2	10 00	80 00



Our men are busily engaged in taking up a carload of Italian Cypress for one of our local nurseries.

<i>T. baccata elegantissima.</i>	Height in Feet	Per 10	Per 100
balled	3½ to 4	22 50	200 00
balled	3 to 3½	20 00	175 00
balled	2½ to 3	17 50	150 00
balled	1 to 1½	10 00	80 00

<i>T. baccata erecta.</i>	Height in Feet	Per 10	Per 100
balled	3½ to 4	20 00	175 00
balled	3 to 3½	17 50	125 00
balled	2½ to 3	15 00	
balled	1½ to 2	12 50	100 00
balled	1 to 1½	10 00	80 00

<i>T. baccata fastigiata. IRISH YEW.</i>	Height in Feet	Per 10	Per 100
balled	5 to 6	40 00	350 00
balled	4 to 5	35 00	300 00
balled	3½ to 4	27 50	225 00
balled	3 to 3½	25 00	200 00
balled	2½ to 3	22 50	175 00
balled	2 to 2½	20 00	160 00

<i>T. baccata fastigiata variegata.</i>	Height in Feet	Per 10	Per 100
balled	3½ to 4	30 00	
balled	3 to 3½	27 50	
balled	2½ to 3	22 50	200 00
balled	1½ to 2	15 00	

<i>T. baccata washingtoni.</i>	Height in Feet	Per 10	Per 100
balled	4½ to 5	27 50	250 00
balled	3½ to 4	25 00	225 00
balled	3 to 3½	22 50	200 00
balled	2½ to 3	20 00	175 00
balled	2 to 2½	17 50	150 00
balled	1 to 1½	12 50	100 00

<i>T. cuspidata.</i>	Height in Feet	Per 10	Per 100
balled	2 to 2½	10 00	80 00

THUJA: Arbor Vitae.

<i>T. gigantea aurea.</i>	Height in Feet	Per 10	Per 100
balled	5 to 6	27 50	
balled	4 to 5	22 50	
balled	3 to 4	20 00	

T. orientalis. CHINESE ARBOR VITAE.

balled	5 to 6	12 50	100 00
balled	4 to 5	10 00	75 00
balled	3 to 4	8 00	60 00

T. orientalis aurea.

balled	5 to 6	35 00	
balled	1 to 1½	7 50	60 00



Cotoneaster horizontalis with its clusters of brilliant red berries.



Interior of the large lath house with trained *Buxus* along the walk and with *Abies* and *Picea* on either side.



Trained *Buxus sempervirens* with a row of *Phoenix canariensis* in the distance, aligning our property line.

Broad-Leaved Evergreens

ACACIA melanoxylon.	BLACK ACACIA.			
		Height in Feet	Per 10	Per 100
from 7 in. pots.....	7 to 8		7 00	60 00
from 6 and 7 in. pots...	6 to 7		5 00	40 00
from 5 and 6 in. pots...	5 to 6		4 00	25 00
A. pravissima.				
from 6 in. pots.....	7 to 8		5 00	
from 6 in. pots.....	4 to 5		3 50	30 00
A. pycnantha.	GOLDEN WATTLE.			
from 6 in. pots.....	8 to 9		5 00	
from 6 in. pots.....	7 to 8		4 50	
from 6 in. pots.....	5 to 6		3 50	
A. verticillata.				
from 5 in. pots.....	5 to 6		4 50	35 00
from 5 in. pots.....	4 to 5		3 50	25 00
ALECTRYON excelsum.	NEW ZEALAND OAK.			
from 7 in. pots.....	2½ to 3		7 50	
from 5 in. pots.....	3 to 4		5 00	45 00
from 5 in. pots.....	2 to 3		4 50	35 00
ARBUTUS unedo.	STRAWBERRY TREE.			
balled.....	3 to 4		15 00	
AUCUBA japonica variegata.	GOLD DUST PLANT.			
balled.....	3 to 4		7 50	
balled.....	2 to 3		5 50	45 00
A. japonica viridis latifolia.				
balled.....	4 to 5		12 50	
balled.....	3 to 4		10 00	
BUXUS sempervirens.	BOXWOOD.			
(standards)				
balled 18 to 24 in. stem, 12 to 14 in. head			25 00	
balled 18 to 24 in. stem, 10 to 12 in. head			17 50	
balled 18 to 24 in. stem, 8 to 10 in. head			15 00	
balled 12 to 18 in. stem, 12 to 14 in. head			20 00	
(bushes)				
balled 1½ to 2 ft., 18 in. dia.			10.00	75.00

B. sempervirens arborescens.	TREE BOX.			
		Height in Feet	Per 10	Per 100
balled.....	3 to 4		10 00	
B. sempervirens aureo-marginata.				
balled.....	3 to 4		17 50	150 00
B. sempervirens rotundifolia.				
balled.....	4 to 5		12 50	100 00
B. sempervirens suffruticosa.	DWARF BOX.			
balled 8 to 12 in., 6 to 8 in. dia.			7 00	50 00
CAMPHORA officinalis.				
balled.....	5 to 6		20 00	
balled.....	4 to 5		15 00	
CHOISYA ternata.	MEXICAN ORANGE.			
balled.....	1½ to 2		6 00	50 00
COPROSMA baueri.				
balled.....	2 to 2½		5 00	40 00
balled.....	1½ to 2		4 00	35 00
from 6 in. pots.....	5 to 6		3 50	
from 5 and 6 in. pots...	4 to 5		3 00	20 00
C. baueri variegata.				
from 6 in. pots.....	5 to 6		10 00	
from 5 and 6 in. pots...	4 to 5		7 50	
CORNUS capitata.	EVERGREEN DOGWOOD.			
from 8 in. pots.....	5 to 6		10 00	
from 6 and 8 in. pots...	4 to 5		7 50	60 00
COTONEASTER acuminata.				
balled.....	5 to 6		12 50	100 00
C. angustifolia.				
balled.....	5 to 6		25 00	200 00
balled.....	4 to 5		20 00	
balled.....	3 to 4		15 00	125 00
C. francheti.				
balled.....	4 to 5		17 50	
balled.....	3 to 4		12 50	

C. frigida.	Height in Feet	Per 10	Per 100	GREVILLEA robusta.	Height in Feet	Per 10	Per 100
balled.....	6 to 7	17 50	150 00	from 7 and 8 in. pots...	8 to 9	7 50	
balled.....	5 to 6	15 00	125 00	from 6 in. pots.....	5 to 6	4 50	35 00
C. horizontalis.				from 5 and 6 in. pots...	4 to 5	3 50	25 00
balled.....	3½ to 4	17 50	150 00	G. thelemanniana.			
balled.....	3 to 3½	12 50	100 00	from 4 and 5 in. pots...	3 to 3½	7 50	60 00
ERICA mediterranea.				from 4 and 5 in. pots...	2½ to 3	6 00	50 00
balled.....	2 to 3	7 50	60 00	LAVENDULA vera. LAVENDER.			
balled.....	1½ to 2	5 00	40 00	from 5 in. pots.....	1½ to 2	2 50	
from 5 in. pots.....	3 to 4	3 50	25 00	LEPTOSPERMUM laevigatum.			
from 5 in. pots.....	2 to 3	3 00	20 00	from 4 and 5 in. pots...	2 to 3	2 50	20 00
E. persoluta alba.				from 4 and 5 in. pots...	1½ to 2	2 00	15 00
from 5 in. pots.....	2½ to 3	5 00	40 00	LIGUSTRUM ovalifolium. CALIFORNIA PRIVET.			
ESCALLONIA berteriana.				naked roots.....	4 to 6	2 00	15 00
balled.....	6 to 8	8 00	60 00	naked roots.....	3 to 4	1 50	10 00
balled.....	5 to 6	6 00	50 00	L. vulgare. EVERGREEN or ENGLISH PRIVET.			
E. rubra.				naked roots.....	3 to 4	2 50	20 00
balled.....	2 to 2½	10 00	75 00	naked roots.....	2 to 3	2 00	15 00
balled.....	1½ to 2	7 50		MAGNOLIA grandiflora.			
EVONYMOUS japonica.				balled.....	5 to 6	20 00	150 00
balled.....	4 to 6	7 50		M. grandiflora lanceolata. (M. exoniensis).			
E. japonica albo-marginata.				balled.....	5 to 6	27 50	
balled.....	3 to 4	7 50	60 00	balled.....	4 to 5	22 50	
E. japonica albo-variegata.				MELALEUCA armillaris.			
balled.....	4 to 6	5 00	40 00	from 5 in. pots.....	5 to 6	2 50	20 00
E. japonica aureo-marginata.				from 5 in. pots.....	4 to 5	2 00	15 00
balled.....	4 to 6	10 00	80 00	M. decussata.			
E. japonica viridi-variegata.				from 5 in. pots.....	5 to 6	3 50	27 50
balled.....	6 to 8	6 00	50 00	from 5 in. pots.....	4 to 5	2 50	20 00
FATSIA japonica (Aralia japonica)				M. wilsoni.			
from 6 in. pots.....	3 to 4	3 50		from 5 in. pots.....	5 to 6	3 50	30 00
from 5 and 6 in. pots...	2 to 3	3 00	25 00				



Interior of lath house devoted to the growing of young stock.



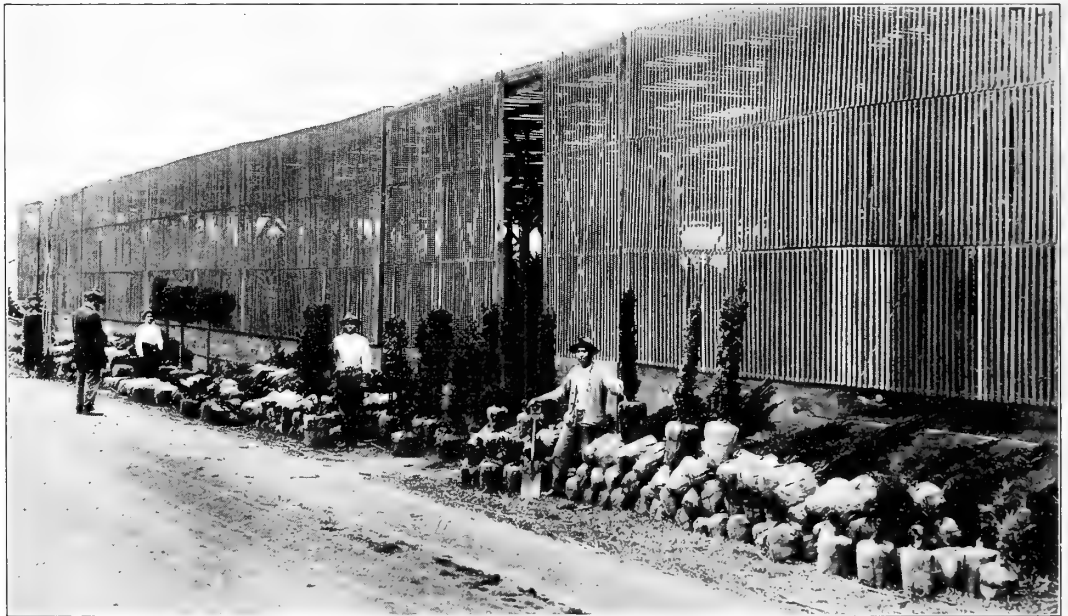
A group of broad leaved Evergreens with a block of deciduous trees in the background consisting of *Prunus laurocerasus*; *P. laurocerasus latifolia*; *Laurustinus grandiflora*; *Veronica variegata*.

	Height in Feet	Per 10	Per 100
MYOPORUM laetum.			
from 7 and 8 in. pots...	6 to 7	5 00	
from 7 and 8 in. pots...	5 to 6	4 00	35 00
MYRTUS: Myrtle.			
M. luma.			
balled.....	1½ to 2	7 00	60 00
NANDINA domestica.			
balled.....	4 to 5	17 50	
balled.....	3 to 4	15 00	
balled.....	2 to 3	12 50	100 00
balled.....	1½ to 2	7 50	60 00
NERIUM oleander.			
balled.....	5 to 6	12 50	100 00
balled.....	4 to 5	10 00	80 00
balled.....	3 to 4	8 00	60 00
Claude Blanc	Mad. Dubois		
De Brun	Mad. Peyre		
Double Pink	Madonna Grandiflorum		
Dr. Golfin	Notaire Cavalliere		
Henry Mares	Prof. Martin		
Lilacinum	Single White		
Mad. Chas. Baltet			
PITTIOSPORUM crassifolium.			
balled.....	4 to 5	7 50	60 00
P. eugenioides (bushes).			
balled.....	5 to 6	17 50	150 00
balled.....	4 to 5	12 50	100 00
P. tenuifolium (P. nigricans).			
balled.....	5 to 6	12 50	100 00
balled.....	4 to 5	9 00	70 00
balled.....	3 to 4	6 00	50 00

	Height in Feet	Per 10	Per 100
PRUNUS laurocerasus. ENGLISH LAUREL.			
balled.....	4 to 5	12 50	100 00
balled.....	3 to 4	10 00	80 00
P. laurocerasus latifolia.			
balled.....	5 to 6	20 00	
P. laurocerasus rotundifolia.			
balled.....	5 to 6	12 50	100 00
P. lusitanica. PORTUGAL LAUREL.			
balled.....	5 to 6	15 00	125 00
PSIDIUM cattleianum. STRAWBERRY GUAVA.			
from 5 and 6 in. pots...	1 to 1½	3 50	27 50
PYRACANTHA crenulata. CHINESE EVERGREEN HAWTHORN.			
balled.....	4 to 5	17 50	
from 6 in. pots.....	4 to 5	5 00	40 00
from 6 in. pots.....	3 to 4	4 00	30 00
QUERCUS Holly Leaved.			
from 7 in. pots.....	6 to 8	8 00	
from 7 in. pots.....	5 to 6	6 00	
from 5 in. pots.....	4 to 5	5 00	
Q. suber. CORK OAK.			
from 6 in. pots.....	3 to 4	4 00	35 00
from 5 and 6 in. pots...	2 to 3	2 75	25 00
RHAMNUS californica. COFFEE BERRY.			
from 6 in. pots.....	4 to 5	5 00	40 00
from 5 in. pots.....	3 to 4	4 00	30 00
SCHINUS molle. CALIFORNIA PEPPER TREE.			
from 6 in. pots.....	7 to 8	7 00	
from 6 in. pots.....	6 to 7	5 00	
from 6 in. pots.....	5 to 6	4 00	30 00

SPARTIUM junceum. SPANISH BROOM.				
	Height in Feet		Per 10	Per 100
from 6 in. pots.....	5 to 6		5 00	40 00
from 5 in. pots.....	4 to 5		4 00	30 00
VERONICA decussata.				
balled.....	1½ to 2		2 50	20 00
V. elliptica.				
balled.....	1½ to 2		3 00	25 00
V. speciosa imperialis.				
balled.....	1½ to 2		3 00	25 00
V. speciosa variegata.				
balled.....	2 to 3		3 50	30 00
V. traversi.				
balled.....	1½ to 2		2 50	20 00
VIBURNUM sandankwa (V. ellipticum).				
balled.....	4 to 5		12 50	
balled.....	3 to 4		10 00	
V. tinus. LAURUSTINUS.				
balled.....	3 to 4		10 00	75 00
V. tinus lucidum (L. grandiflora).				
.....	5 to 6		12 50	
.....	4 to 5		10 00	
.....	3 to 4		7 50	
V. tinus strictum (L. rotundifolia).				
balled.....	5 to 6		10 00	75 00

AESCULUS carnea. RED FLOWERING HORSE CHESTNUT.				
	Height in Feet		Per 10	Per 100
.....	10 to 12		12 50	100 00
.....	8 to 10		10 00	80 00
.....	6 to 8		7 50	60 00
A. hippocastanum. EUROPEAN HORSE CHESTNUT.				
.....	12 to 14		15 00	125 00
.....	10 to 12		12 50	100 00
.....	8 to 10		10 00	80 00
BETULA: Birch.				
B. alba. EUROPEAN WHITE BIRCH.				
.....	12 to 14		15 00	125 00
.....	10 to 12		12 50	100 00
.....	8 to 10		10 00	80 00
.....	6 to 8		8 00	60 00
CASTANEA sativa. ITALIAN SPANISH CHESTNUT.				
.....	10 to 12		5 00	40 00
.....	8 to 10		4 00	30 00
.....	6 to 8		3 50	25 00
CERCIS siliquastrum. EUROPEAN JUDAS TREE.				
.....	10 to 12		17 50	
.....	8 to 10		15 00	
.....	6 to 8		12 00	



Two carloads of evergreens lined up in front of one of our lath houses, consisting of Taxus; Bambusa; Cryptomeria; Juniperus; Cotoneaster; Standard and Bush roses and Deciduous Ornamental trees.

General Collection

Deciduous Trees and Shrubs

ORNAMENTAL TREES.

AGER saccharinum. SILVER MAPLE.				
.....	12 to 14		6 00	50 00
.....	10 to 12		5 00	40 00
.....	8 to 10		4 00	35 00
A. saccharum. SUGAR MAPLE.				
.....	12 to 14		10 00	75 00
.....	10 to 12		7 50	60 00

CRATAEGUS monogyna pauli. PAUL'S DOUBLE SCARLET THORN.

.....	8 to 10		7 00	60 00
.....	6 to 8		6 00	50 00
C. oxyacantha. ENGLISH HAWTHORN.				
.....	12 to 14		12 50	100 00
.....	10 to 12		10 00	80 00
JUGLANS: Walnut. Transplanted.				
American Black. California Black.				
.....	12 to 14		6 00	50 00
.....	10 to 12		4 50	40 00
.....	8 to 10		4 00	30 00

LABURNUM vulgare. GOLDEN CHAIN.		Height in Feet	Per 10	Per 100
		8 to 10	7 50	60 00
		6 to 8	6 00	50 00
LIQUIDAMBAR styraciflua. SWEET GUM.		Height in Feet	Per 10	Per 100
		10 to 12	12 50	
		8 to 10	10 00	
		6 to 8	8 00	
		4 to 6	6 00	50 00
LIRIODENDRON tulipifera. TULIP TREE.		Height in Feet	Per 10	Per 100
		8 to 10	10 00	80 00
MORUS: Mulberry.				
M. alba. WHITE MULBERRY.				
		10 to 12	7 50	60 00
		8 to 10	5 00	40 00
M. "Downing."				
		12 to 14	10 00	75 00
		10 to 12	7 50	60 00
M. "Lick's American."				
		12 to 14	7 50	60 00
		10 to 12	6 00	50 00
M. "New American."				
		12 to 14	6 00	50 00
		10 to 12	5 00	40 00
		8 to 10	4 00	
M. "Persian."				
		10 to 12	7 50	60 00
		8 to 10	6 00	50 00
PLATANUS orientalis. EUROPEAN SYCAMORE; ORIENTAL PLANE.				
		12 to 14	10 00	80 00
		10 to 12	7 50	60 00
		8 to 10	6 00	50 00
		6 to 8	5 00	40 00
POPULUS deltoides carolinensis. CAROLINA POPLAR.				
		12 to 14	5 00	40 00
		10 to 12	4 00	35 00
		8 to 10	3 50	30 00
P. nigra italica. LOMBARDY POPLAR.				
		12 to 14	5 00	40 00
		10 to 12	4 00	35 00
		8 to 10	3 50	30 00
ROBINIA pseudacacia. COMMON or BLACK LOCUST.				
		12 to 14	7 50	60 00
		10 to 12	6 00	50 00
		8 to 10	5 00	40 00
R. pseudacacia decaisneana. PINK-FLOWERING LOCUST.				
		12 to 14	10 00	80 00
SORBUS aucuparia. EUROPEAN MOUNTAIN ASH; ROWAN TREE.				
		10 to 12	9 00	75 00
		8 to 10	7 50	60 00
		6 to 8	6 00	40 00
TILIA platyphyllos. EUROPEAN LINDEN; LIME TREE.				
		12 to 14	7 50	60 00
		10 to 12	6 00	50 00
		8 to 10	5 00	40 00

ULMUS americana. AMERICAN or WHITE ELM.		Height in Feet	Per 10	Per 100
		12 to 14	7 50	60 00
		10 to 12	6 00	50 00
U. campestris latifolia. BROAD-LEAVED ENGLISH ELM				
		12 to 14	9 00	75 00
		10 to 12	7 50	60 00
		8 to 10	6 00	50 00
U. campestris suberosa. CORK ELM.				
		12 to 14	7 50	60 00
		10 to 12	6 00	50 00
		8 to 10	5 00	40 00
U. scabra huntingdoni. HUNTINGDON'S ELM.				
		12 to 14	9 00	75 00
		10 to 12	7 50	60 00
		8 to 10	6 00	50 00

Deciduous Shrubs

CORNUS: Dogwood.				
C. alba sibirica. SIBERIAN DOGWOOD.				
		6 to 8	5 00	40 00
		3 to 4	3 50	30 00
C. florida. FLOWERING DOGWOOD.				
		1½ to 2	4 00	30 00
C. sanguinea.				
		6 to 8	5 00	40 00
CORYLUS maxima purpurea. PURPLE-LEAVED FILBERT.				
		6 to 8	5 00	40 00
		4 to 6	4 00	30 00
CYDONIA japonica. JAPAN SCARLET QUINCE.				
		4 to 6	4 00	30 00
DEUTZIA fortunei.				
		4 to 6	4 00	30 00
D. "Pride of Rochester."				
		4 to 6	4 00	30 00
DIERVILLA (Weigela).				
	Assorted	6 to 8	6 00	50 00
		4 to 6	5 00	40 00
		3 to 4	4 00	30 00
	Abel Carriere (rosy carmine)			
	D. florida (W. rosea) (pink)			
	Hendersoni (deep rose)			
	Lavallei (bright crimson)			
	Van Houttei (carmine pink)			
EXOCHORDA grandiflora. PEARL BUSH.				
		4 to 6	6 00	50 00
		3 to 4	5 00	40 00
FORSYTHIA suspensa fortunei. GOLDEN BELL.				
		6 to 8	5 00	40 00
		4 to 6	4 00	30 00
FUCHSIA magellanica riccartoni.				
	from 4 in. pots	3 to 4	4 00	30 00

HIBISCUS syriacus.

	Height in Feet	Per 10	Per 100
assorted.....	4 to 6	6 00	50 00
Ardens (blue)			
Boule de Feu (purplish red)			
Carnea plena (flesh)			
Duchesse de Brabant (red)			
Jeanne d'Arc (pure white)			

HYDRANGEA arborescens sterilis. HILLS OF SNOW.

from 5 in. pots.....	2 to 3	4 00	30 00
----------------------	--------	------	-------

H. French Pink.

from 4 in. pots.....	1½ to 2	3 00	25 00
----------------------	---------	------	-------

H. hortensis.

from 5 in. pots.....	1½ to 2	3 50	27 50
from 5 in. pots.....	1 to 1½	3 00	25 00

KERRIA (Corchorus).**K. japonica. JAPANESE ROSE.**

single flowering.....	4 to 6	4 00	30 00
.....	3 to 4	3 00	25 00

LIPPIA citriodora. LEMON VERBENA.

.....	6 to 8	5 00	40 00
.....	4 to 6	4 00	30 00

LONICERA tatarica. TARTARIAN HONEY-SUCKLE.

.....	4 to 6	5 00	40 00
-------	--------	------	-------

PHILADELPHUS: Mock Orange: Syringa.**P. coronarius. GARLAND SYRINGA.**

.....	6 to 8	4 00	30 00
.....	4 to 6	3 00	25 00

P. inodorus (P. grandiflorus). LARGE FLOWERING SYRINGA.

.....	8 to 10	6 00	50 00
.....	6 to 8	5 00	40 00
.....	4 to 6	4 00	30 00

PRUNUS spinosa. BLACKTHORN; SLOE.

.....	6 to 8	5 00	40 00
.....	4 to 6	4 00	30 00

PUNICA: Pomegranate.**P. granatum.**

.....	4 to 6	4 50	35 00
.....	3 to 4	4 00	30 00

RIBES aureum. YELLOW FLOWERING CURRANT.

.....	6 to 8	4 50	35 00
-------	--------	------	-------

R. gordonianum.

.....	6 to 8	4 50	35 00
.....	4 to 6	4 00	30 00

R. sanguineum. RED FLOWERING CURRANT.

.....	4 to 6	4 00	30 00
.....	3 to 4	3 00	25 00

SAMBUCUS canadensis laciniata. CUT-LEAVED ELDER.

.....	8 to 10	4 00	30 00
.....	6 to 8	3 00	25 00

S. canadensis variegata. VARIEGATED ELDER.

.....	8 to 10	4 50	35 00
.....	6 to 8	3 50	30 00

SPIRAEA: Spirea.**S. californica.**

	Height in Feet	Per 10	Per 100
.....	4 to 6	3 00	25 00

S. cantoniensis (S. reevesii; S. lanceolata).

.....	4 to 6	2 50	20 00
-------	--------	------	-------

S. cantoniensis flore pleno.

.....	6 to 8	4 00	30 00
-------	--------	------	-------

S. van houttei.

.....	6 to 8	3 00	25 00
-------	--------	------	-------

SYRINGA: Lilac.**S. vulgaris alba. COMMON WHITE LILAC.**

.....	4 to 6	3 00	25 00
.....	3 to 4	2 50	20 00

TAMARIX: Tamarisk.

Assorted.....	10 to 12	4 00	30 00
.....	8 to 10	3 00	25 00
.....	6 to 8	2 50	20 00

T. algerica**T. parviflora (T. africana)****T. odessana****T. parviflora purpurea****VIBURNUM opulus sterile. COMMON SNOWBALL.**

.....	6 to 8	4 00	30 00
.....	4 to 6	2 50	20 00

Climbing Plants

BIGNONIA buccinatoria and venusta.

from 5 in. pots.....	5 00	35 00
----------------------	------	-------

BOUGAINVILLEA spectabilis.

from 6 in. pots.....	7 50	60 00
from 5 in. pots.....	6 00	50 00

JASMINUM humile (J. revolutum). ITALIAN YELLOW JASMINE.

from 5 and 6 in. pots.....	3 00	25 00
----------------------------	------	-------

J. nudiflorum (J. sieboldianum).

from 5 in. pots.....	3 00	25 00
----------------------	------	-------

J. primulinum. DOUBLE YELLOW JASMINE.

from 5 in. pots.....	3 00	25 00
from 4 in. pots.....	2 50	20 00

LONICERA japonica chinensis. CHINESE HONEY-SUCKLE.

from 5 in. pots.....	2 50	20 00
----------------------	------	-------

L. halliana. JAPANESE HONEYSUCKLE.

from 5 in. pots.....	2 50	20 00
----------------------	------	-------

PITHECOCTENIUM CLEMATIDEUM (Bignonia alba).

from 6 in. pots.....	3 00	25 00
from 5 in. pots.....	2 50	20 00

PLUMBAGO capensis.

from 5 in. pots.....	2 00	15 00
----------------------	------	-------

SOLANUM jasminoides. POTATO VINE.

from 4 in. pots.....	2 00	15 00
----------------------	------	-------

SOLLYA heterophylla. AUSTRALIAN BLUEBELL.

from 4 in. pots.....	3 00	25 00
----------------------	------	-------

TACSONIA: Passion Vine.**T. manicata ignea. SCARLET PASSION VINE.**

from 4 in. pots.....	3 00	25 00
----------------------	------	-------

T. mollissima. PINK PASSION VINE.

from 4 in. pots.....	2 50	20 00
----------------------	------	-------

TECOMA australis. WONGA-WONGA VINE.

	Per 10	Per 100
from 5 in. pots.	2 50	20 00

T. capensis.

from 5 in. pots.	3 50	25 00
-----------------------	------	-------

T. jasminoides.

from 5 in. pots.	2 50	20 00
from 4 in. pots.	2 00	15 00

WISTARIA chinensis. BLUE CHINESE WISTARIA.

from 8 in. pots.	5 00	40 00
from 5 in. pots.	4 00	30 00

W. chinensis albiflora. WHITE CHINESE WISTARIA.

from 5 in. pots.	4 00	30 00
-----------------------	------	-------

W. chinensis flore pleno. DOUBLE-FLOWERING CHINESE WISTARIA.

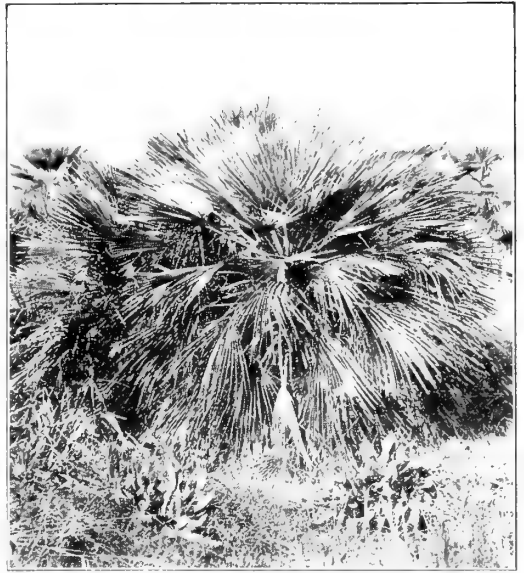
from 5 in. pots.	5 00	40 00
-----------------------	------	-------

W. chinensis fragrans. FRAGRANT WHITE WISTARIA.

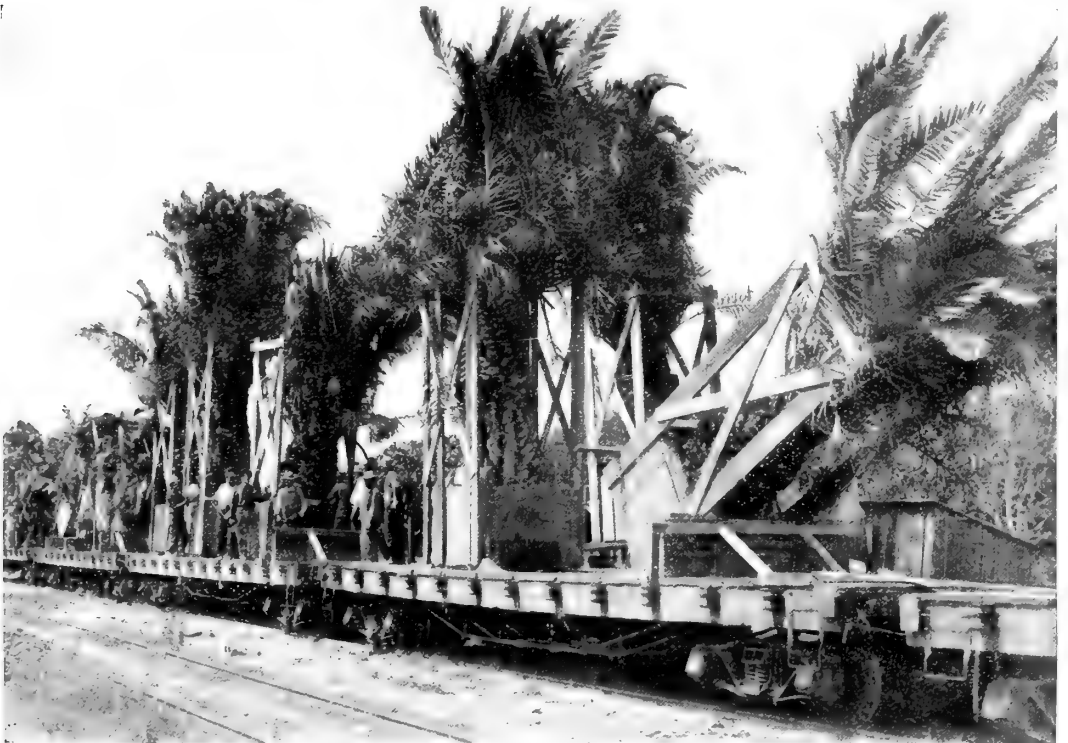
field grown, large size.	6 00	50 00
-------------------------------	------	-------

W. multijuga rosea. PINK JAPANESE WISTARIA.

from 5 in. pots.	5 00	35 00
-----------------------	------	-------



For an attractive decorative palm, combining hardiness with its many other good qualities, there is nothing which will compare with *Chamaerops humilis*.



Just to show you the size of the palms supplied by us to the Panama-Pacific International Exposition in 1915.

Bamboo and Palms

ARUNDINARIA hindsii.

	Height in Feet	Per 10	Per 100
balled clumps.	6 to 8	8 00	60 00

A. japonica.

balled clumps.	8 to 10	10 00	80 00
balled clumps.	6 to 8	8 00	60 00

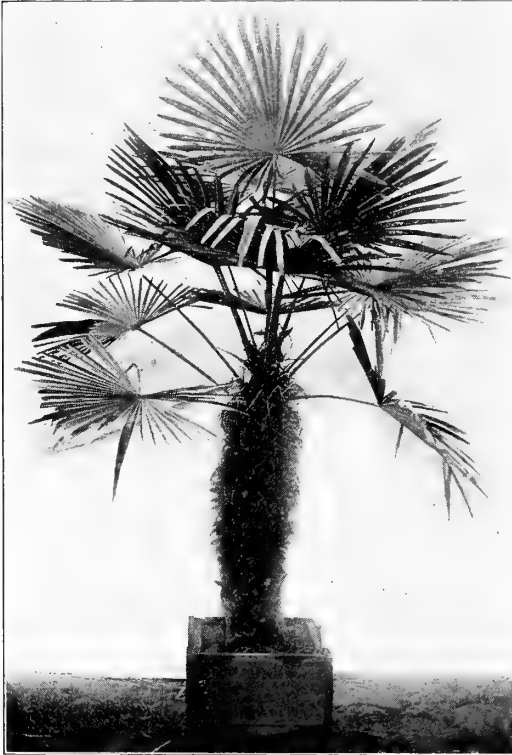
Bambusa palmata.

	Height in Feet	Per 10	Per 100
balled clumps.	6 to 8	8 00	60 00
balled clumps.	4 to 6	5 00	40 00

PHYLLOSTACHYS.

P. aurea.

balled clumps.	4 to 6	10 00	
balled clumps.	3 to 4	7 50	
balled clumps.	2 to 3	5 00	



Trachycarpus excelsa (Windmill palm). This magnificent 7 ft. plant is in a 14 x 14 inch box. It will remain in a box like this for several years and maintain its striking appearance.

<i>P. quillioi.</i>	Height in Feet	Per 10	Per 100
balled clumps.....	10 to 12	12 50	100 00
balled clumps.....	8 to 10	10 00	80 00
balled clumps.....	6 to 8	8 00	60 00
balled clumps.....	2 to 3	5 00	40 00

Palms

<i>CHAMAEROPS humilis argentea.</i>			
balled.....	3 to 4	15 00	125 00
balled.....	2 to 3	12 50	100 00
<i>COCOS australis.</i>			
balled.....	3 to 4	30 00	
balled.....	2 to 3	20 00	
<i>PHOENIX canariensis.</i>			
balled.....	4 to 5	20 00	150 00
balled.....	3 to 4	15 00	125 00
balled.....	2 to 3	10 00	80 00
<i>DASYLIRION acrotrichum (D. Gracile).</i>			
balled.....	2 to 3	7 50	60 00
<i>D. glaucophyllum.</i>			
balled.....	2 to 3	10 00	80 00
<i>NOLINA longifolia.</i>			
balled.....	4 to 5	20 00	
4 in. pots.....	2 to 2½	2 50	20 00

Miscellaneous Plants

<i>ADIANTUM capillus-veneris imbricatum. VENUS HAIR FERN.</i>			
		Per 10	Per 100
10 in. pans.....		15 00	
8 in. pans.....		10 00	
6 in. pans.....		7 50	60 00
5 in. pots.....		5 00	40 00
<i>Nymphaea flava. FLORIDA YELLOW WATER LILY.</i>			
		2 50	20 00
<i>Amaryllis belladonna. BELLADONNA LILY.</i>			
bulbs.....		60	5 00
<i>Asparagus sprengeri.</i>			
5 in. pots.....		2 00	15 00
<i>Gypsophila paniculata. BABY'S BREATH</i>			
5 in. pots.....		1 20	8 00
<i>Phormium Cookianum variegatum.</i>			
balled clumps.....		1 00	8 00

Hardiness of Palms

A short time ago a prominent newspaper editor of Atlanta, Georgia wrote us that *Trachycarpus excelsa* palms furnished him had stood a temperature of 4° below zero without injury.



A specimen *Phormium cookianum variegatum* (Golden New Zealand Flax). A 5 ft. plant in a 16 x 16 inch box.



Our roses have been cut by a digger pulled by gasoline motor. This team follows up with a heavy road plow designed for the purpose and plows the roses out. The roots are perfect.

Roses

Late Introductions

\$20.00 per 100; \$150.00 per 1000

- 50 Bianca
- 40 Chrissie MacKellar
- 75 Edith Part
- 30 Climbing American Beauty
- 50 Lady Dunleath
- 900 Mad. Edouard Herriot or Daily Mail
- 60 Mrs. Chas. Hunter
- 130 Mrs. Muir Mackean
- 500 Mrs. W. H. Rowe

Class "A"

\$15.00 per 100; \$125.00 per 1000

- 50 Cloth of Gold
- 100 Gloire de Che. Guinoisseau
- 2200 Irish Elegance
- 100 Lady Hillingdon
- 200 Marq. Querhoent
- 75 Mrs. David Jardine
- 1150 Mrs. W. C. Miller

Class "B"

\$12.50 per 100; \$100.00 per 1000

- 100 Agrippina
- 20 Anna Ollivier
- 500 Aug. Guinoisseau
- 40 Avoca
- 150 Bardou Job
- 50 Beaute Inconstante
- 500 Belle Siebrecht
- 150 C. J. Grahame

- 50 Cl. White Pet
- 1000 Crimson Rambler
- 80 Dr. Grill
- 400 Elizabeth Rowe
- 100 Emp. du Maroc
- 50 Etna
- 130 Gainsborough
- 2400 General McArthur
- 60 Golden Gate
- 60 Grace Molyneux
- 30 Helen Good
- 75 Hon. I. Bingham
- 130 Imp. Rainbow
- 230 John Cuff
- 50 La Detroit
- 50 Lamarque
- 75 Liberty
- 75 Mad. C. Guinoisseau
- 150 Mad. de Watteville
- 150 Mad. Hoste
- 40 Mad. Lombard
- 40 Mad. Vermorel
- 300 Cherokee Sgl. White
- 75 Cherokee Dbl. White
- 100 Cl. Bridesmaid
- 50 Cl. Capt. Christy
- 2000 Marechal Niel
- 200 Marie Van Houtte
- 650 Miss Kate Moulton
- 1150 Mlle. C. Brunner
- 50 Moschata Nivea
- 150 Mousseline
- 75 Mrs. M. Kennedy
- 65 Mrs. Theo. Roosevelt
- 1750 Papa Gontier
- 45 Perle d'Or
- 515 Phila. Rambler
- 500 Pink Cherokee

- 125 Queen of Edgely
- 200 Rainbow
- 200 Ramona
- 350 R. M. Henriette
- 275 R. O. de Wurtemberg
- 150 Rose Queen
- 400 S. du Pres. Carnot
- 700 Souv. de Wooton
- 125 Sweet Briar
- 250 Veilchenblau
- 100 Vis. Folkstone
- 200 Winnie Davis
- 40 Mad. Wagram
- 40 Mad. Welche

The bulk of our roses are budded on Manetti. We also use Gloire des Rosomanes and La Grifferaie. We grow several varieties of Hybrid Perpetuals, Banksia and Cherokee on their own roots. Last year and this season we shipped several carloads to nurserymen in the far eastern states and they had only words of praise for the plants which we forwarded to them. We are prepared to enter into contracts to grow roses in large blocks in either standard or tree roses and bush plants. Our plants attain their full size in June, permitting us to harden them off (with our exceptionally cool summer climate) and have them ready for shipment in November or even earlier if necessary. We have visited the leading Rose Nurseries of Europe, and can say with every degree of confidence that our stocks for vigor and size are in a class by themselves and are in every

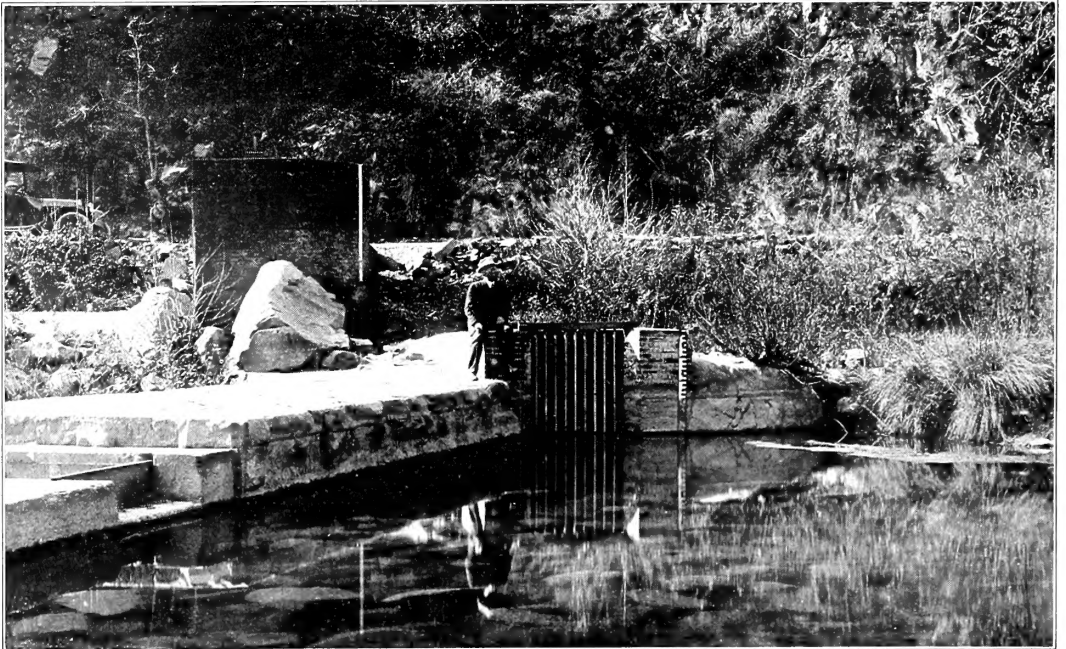


It is not surprising that our Superintendent should be proud of his handiwork in growing rose stocks like the sample he is holding in his hand.

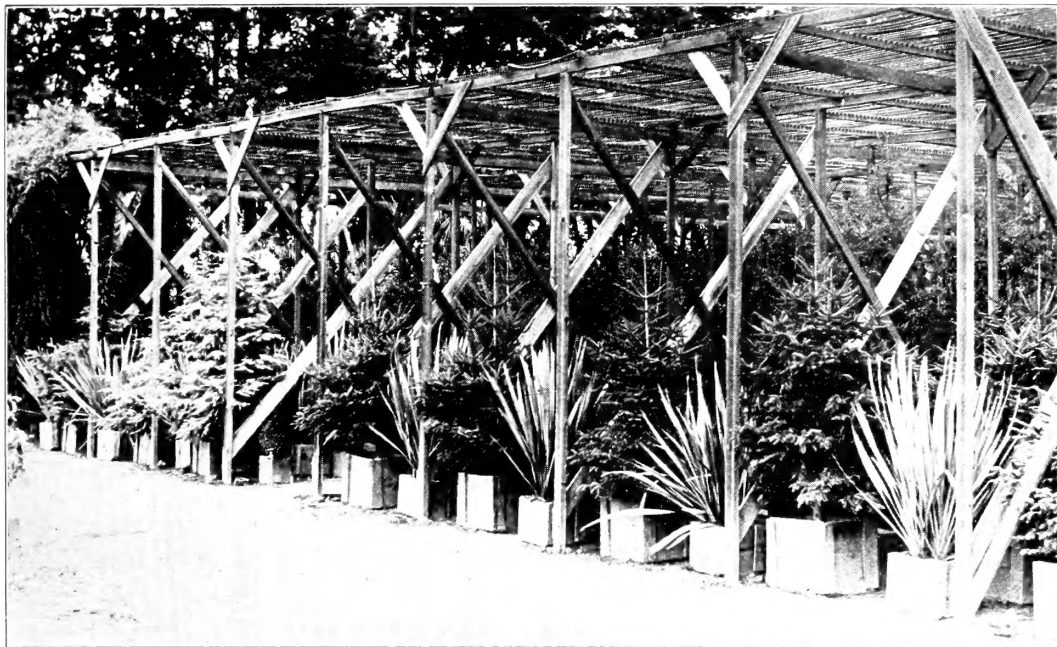
sense of the word superior to any foreign grown plants. All of our wild stocks are disbudded thus eliminating all the annoyance from suckers.

Give us a trial order.

Roses We have over four hundred varieties and will be glad to bud any desired kind if ordered in July and make delivery eighteen months later.



This is the source of our water supply. Our manager would not be sitting so contentedly over the 36-inch intake pipe supplying the nursery with water at any other season of the year than the late Fall. In the winter months this creek is a turbulent torrent.



Exterior of lath house used as a cover for our specimen evergreen trees and shrubs. The plants in boxes are spruces and New Zealand Flax. The climber at the extreme end is *Muehlenbeckia* and the tall trees immediately adjoining are Monterey Cypress. These afford protection to thousands of boxed palms.

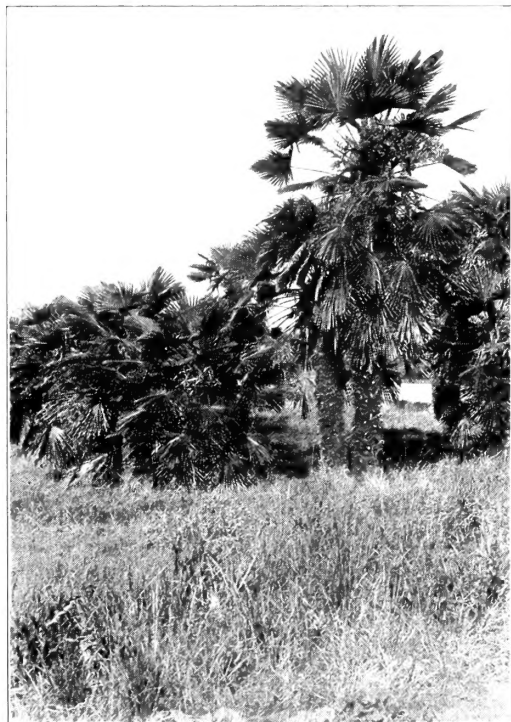
Fruit Trees and Small Fruits

We have the largest assortment of varieties on one place in the United States, including Apples, Pears, Cherries, Plums, Peaches, Nuts of different kinds, small fruits, grapes and many novelties. To illustrate the immensity of our stock, a few years ago we furnished the U. S. Department of Agriculture with two hundred and fifty varieties of foreign Grapes. Next summer we expect to send out a list of varieties of fruit that we have and can furnish bud wood of.

At this time will be glad to figure with the trade on any list of fruit trees, small fruits or vines they may be interested in, and shall be glad to mail on request our current retail price list showing varieties and discounts to Nurserymen.

Myrobolan Plum Seedlings

We are now digging and grading our large stock and believe we will have about one hundred thousand in surplus made up of the following sizes: 5 to 7 m/m, 3 to 5 m/m and 2 to 3 m/m. If interested write or wire immediately as there is a large demand. The stock could not possibly be of better quality.



It takes a great many years to grow a block of *Trachycarpus excelsa* (Windmill palm) like this. Their remarkable hardness, adaptability for avenues, grouping and for porch decoration should make them exceedingly popular in Oregon, Washington, Nevada, Arizona, New Mexico and the Southern States where they are not generally known.



**Washingtonia
gracilis.**

One of the most popular of California palms. This palm would weigh, when boxed in a 30 x 30-in. box, packed ready for shipment, four thousand pounds. It is twenty-eight inches in diameter at the base. The several hundred palms aligning the avenue on the grounds of the Panama-Pacific International Exposition in 1915 were supplied by us. Not a single one went back. They weighed from eight to thirty tons each. Some of the Phoenix canariensis were three feet in diameter and were forty years old.

