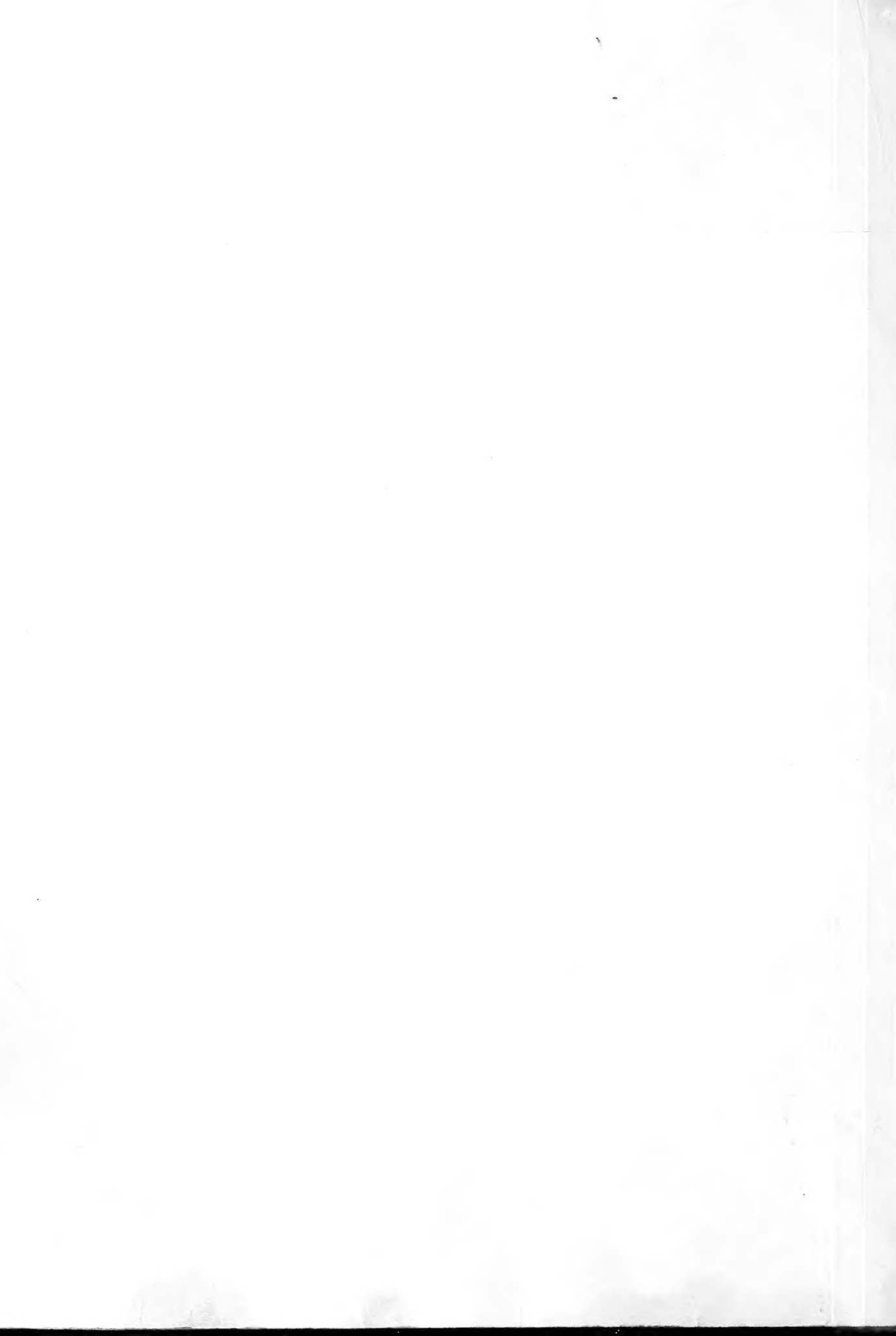


## Historic, archived document

Do not assume content reflects current scientific knowledge, policies, or practices.



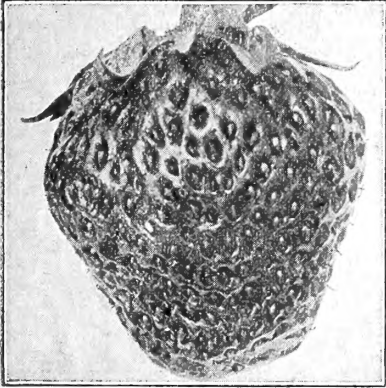
# Wholesale Price List of Nursery Stock

From the Nursery to the Planter

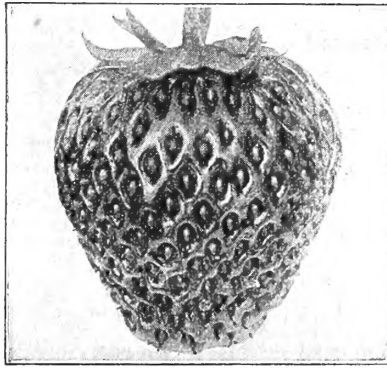
## Stokes Seed Farms Co., Growers

WINDERMoor FARM, MOORESTOWN, NEW JERSEY

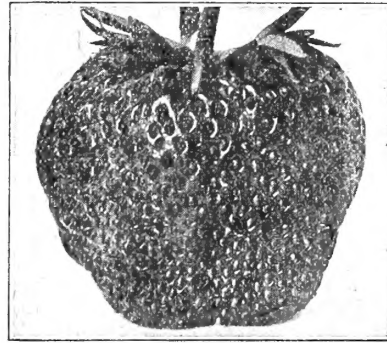
Order early, as all kinds of fruit trees, plants and in fact all kinds of nursery stock is very scarce all over the entire country. Remit by P. O. Money Order, Express Order, Draft or Personal Check.



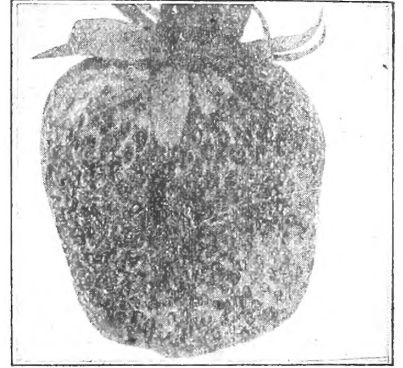
Extra Early Giant



Dr. Burrell



Gibson



Extra Late Giant

## Strawberries

\$500 to \$800 an Acre from Our Select Varieties of Strawberries

This is the Time to Grow Strawberries

Prices for strawberries in the years 1919 and 1920 were exceptionally high, selling for 40 to 50 cents a quart. The luscious strawberry is for once as expensive as it is delicious, with the prospect of higher prices for the next four or five years at least. The prices paid were really almost as good as digging gold in California.

Never was there a time when a little money could be invested in the small fruit business with the certain prospects of such enormous profits; \$300 or \$400 invested in plants in the spring of 1919 grew into \$600 to \$800 in the spring of 1920. The retail stores and canning factories could not get enough to supply their demands, notwithstanding the enormous prices they offered and paid. Now is the opportune time to start in the small fruit business. Do not let the fact that the prices of plants have advanced somewhat stop you; they had to advance, but just compare the price of plants with the advanced price of the fruit and you will see that our prices are very reasonable.

Healthy, strong, well-rooted plants are necessary if you expect to grow large crops of fruit that bring you \$500 to \$800 an acre. Our Guaranteed New-Land Plants are large, healthy and strong for they are grown on the best soil that Mother Earth can supply.

Rev. G. M. Welmer, of Dayton, Tenn., cleared \$925.60 to the acre on his strawberry farm. Mr. E. D. Mintzinger, of Willapa, Wash., cleared \$1,125 an acre on his strawberries.

### Our Big 4 Money-Making Varieties

Earliest to the latest, covering the entire season. Best for the family garden, best in quality and productiveness, the cream of over 400 varieties.

**EXTRA EARLY GIANT.** Earliest of all, and decidedly the finest and best very early strawberry grown. Berries very large, brilliant, scarlet crimson, conical with pointed tips, color all over at once, have a delightful aroma and a very rich mild flavor; very firm, sweet and red to the center; have large green caps, hence exceptionally showy and very attractive. It is the largest, finest flavored, and best very early berry we have ever fruited.

**DR. BURRELL.** (The Million Dollar Strawberry.) The berries resemble the Dunlap but much larger and hold their size throughout the entire season. Berry a beautiful dark red color which extends from center to circumference. Have excellent, sweet, mild flavor which is very delicious; enormously productive, very firm and excellent for canning or dessert. Plants hardy, thrifty and succeed well on any soil and under any ordinary condition.

**GIBSON.** The great money maker. For making money from strawberries grow the Gibson. Strawberry growers find it the most profitable berry they have ever grown. It is the most productive and profitable berry grown. Last year it yielded growers as high as \$800 an acre under common, ordinary method of cultivation. It is suited for home as well as market. It is wonderfully productive, outbearing other varieties with its large attractive, well flavored berries which hold their size throughout the season.

**EXTRA LATE GIANT.** The latest strawberry grown, ripening after Chesapeake. The berries are immense size—truly mammoth—many of them measuring 4½ to 6 inches around and hold their size well to the end of the season; surface smooth and glossy, bright flame color, meaty texture, fine quality, mild, rich, sweet with the flavor and aroma of the wild berry pronounced. One picker counted the berries just as they came and it only took 12 to 14 berries to fill a quart heaping full. We regard them as the largest and most beautiful strawberry we have ever seen. Giant as to size and yield. The berries are produced in clusters of 6 to a dozen, strong fruit stalks. Succeeds upon almost any soil and under all conditions and is called the "Poorman's Berry" and the "Richman's Berry."

### Big 4 Collections

No. 1. 25 strong plants of each of the four varieties, prepaid for \$1.50. 100 plants in all, the earliest to the latest.  
No. 2. 12 strong plants of each of the four varieties prepaid for \$1.00. 48 plants in all.

## Everbearing Strawberries

From letters and conversation with our customers, we conclude that the greatest human joy of the dinner table is the serving of strawberries—ripe, beautiful, cool and luscious; fresh picked from one's own plants. From early in May until November we have them in abundance. Heaped high in the dish, drenched with cream, smothered in sugar, there is no pleasanter luxury on earth—unless it's another dish of strawberries. The following varieties will grow in any soil and in any climate.

**THE FAMOUS STANDPAT.** Fruits regularly, spring, summer and fall; fine berries remaining under the dense foliage till November, when the snow flies. So delicious and mild flavored, invalids unable to touch other fruits, eat them with great benefit. Standpat is by far the largest in size, sweetest and the most productive of them all, outyielding any variety we have ever tried; yielding with us at the rate of 12,000 quarts an acre in the fall of the first year they are planted. We believe it will produce 20,000 quarts to the acre if given good culture. During September, October and up into November the plants were loaded with ripe and green berries; very often 100 to 150 berries were on a single plant. Young runner plants will fruit in a few weeks after they are set and will produce a good crop. We have been growing this variety now for six years and it has surpassed any other variety we have tested, in productiveness, thriftiness, large size and every other quality. We have tested over twenty varieties, beginning with Pan-American, the original and first everbearing strawberry put out; followed by Americus, Francis, Progressive, Superb, Peerless, and all other varieties as they came out, but have never found any that compares with Standpat.

**LUCKY BOY.** This new variety makes plants as fast as Superb and is three times as productive; berries larger, firmer, of better color and so far ahead of Superb that we have discontinued growing the Superb entirely. Lucky Boy made a fine healthy growth and fruited continuously throughout the summer and fall and were loaded with fruit when winter came.

**KOSATO.** This new variety produced a large amount of fruit all season on both old and young plants and the berries were much larger than Superb or Progressive; we believe this grand new variety will take first rank among the fall-bearing strawberries. Berries large, fine flavor, sweet, and good quality; deep red color, firm and keeps well. Plants hardy, thrifty, healthy and productive. We are very favorably impressed with its behavior.

**HONEYMOON.** Near brother to Kosato; originated in Michigan. Honeymoon is just about equal in every respect to Kosato, but fruit is not quite so large.

The wit that each individual plant will produce is enormous. Of good size, round, deep red and firm. A very promising variety and you should try it, as we believe you will find it a very profitable variety to grow.

### Big 4 Everbearing Strawberries

You can have "LARGE HANDSOME STRAWBERRIES" all summer and fall by planting some of our "GENUINE EVER-BEARING STRAWBERRIES." You don't have to wait; set plants in the spring and have a big crop of berries in the fall. They are delicious for shortcake, fine for canning and sell like hot cakes.

### Bonanza Collections

No. 1. 25 plants each, Standpat, Lucky Boy, Kosato, and Honeymoon; 100 plants in all, delivered free for \$3.50.

No. 2. 12 plants each, Standpat, Lucky Boy, Kosato, and Honeymoon; 48 plants in all, delivered free for only \$2.00.

This collection should produce \$25.00 worth of berries the first year.

### Price of Everbearing Strawberries

	By Mail Postpaid				By Express, Not Prepaid			
	6	25	100	1000	25	100	250	1000
Standpat .....	\$0.60	\$1.00	\$1.25	\$5.00	\$4.50	\$11.00	\$40.00	\$40.00
Lucky Boy .....	.40	.75	1.25	4.00	3.50	8.00	30.00	30.00
Kosato .....	.40	.75	1.25	4.00	3.50	8.00	30.00	30.00
Honeymoon .....	.40	.75	1.25	4.00	3.50	8.00	30.00	30.00

### Price of Standard Strawberries

	By Mail, Postpaid				By Express, Not Prepaid			
	Doz.	25	100	1000	25	100	250	1000
Aroma .....	\$0.40	\$0.60	\$1.25	\$1.00	\$2.25	\$8.00	\$8.00	\$8.00
Dr. Burrell .....	.40	.60	1.25	1.00	2.25	8.00	8.00	8.00
Extra Early Giant...	.40	.60	1.25	1.00	2.25	8.00	8.00	8.00
Extra Late Giant...	.40	.60	1.25	1.00	2.25	8.00	8.00	8.00
Gibson .....	.40	.60	1.25	1.00	2.25	8.00	8.00	8.00
Gandy .....	.40	.60	1.25	1.00	2.00	7.50	7.50	7.50
Lady Cornelle .....	.40	.60	1.25	1.00	2.00	7.50	7.50	7.50
Senator Dunlap .....	.40	.60	1.25	1.00	2.00	7.00	7.00	7.00

NOTE—All plants are nicely trimmed and tied in bunches of 25 plants each, packed in crates or baskets with plenty of damp packing so they will carry safely across the continent.



Standpat

# Raspberries Blackberries Hardy Grapes

Among the berries we consider the raspberry to be second only in importance to the strawberry. It should be grown in every family fruit garden. The fruit is very delicious and healthful and is greatly appreciated almost by every lover of fine fruits. It is fine for pies, canning, jellies and jam. Surely no one will do without raspberries when they can be so easily had.

## Raspberries for Everyone Everywhere

Raspberries to can, to make into delicious preserves, jellies, jam—so good they will make the mouth of a mummy water; raspberries for all the children—for all the grown-ups—for every meal—when you just can't think of anything for dinner. You can grow them yourself on your own ground at little cost; you can have these fresh on your table from June till November by planting the Everbearing varieties.

## Genuine Everbearing Raspberries

The Daintiest and Most Delicious of All Fruits

**THE FAMOUS KING OF MARKET RED RASPBERRY.\*** Universally admitted as being the LARGEST, MOST PRODUCTIVE, BRILLIANT RED and the showiest red raspberry grown. Bears heavy crops, spring, summer and fall; as a spring variety it has no equal as to productiveness, large size, firmness, fine quality and for its brilliant glossy color. This variety is being planted more extensively in Southern Illinois (where it is well known) than all other varieties combined. As an Everbearing variety there is nothing to compare with it; the vines in the fall are so heavily laden with large, brilliant red berries that they are bent to almost breaking in a rainbow shape, and they continue to bear until checked by hard freezing. There is great fortune to be made in offering the fruit for market of this new raspberry. They sold on the Chicago market wholesale for \$12.00 to \$15.00 a case of 24 pints netting the growers, over \$5000.00 an acre; see the Chicago price currents of June 9th, 10th, 11th and 12th. They sell for twice as much as any other variety, with a demand far greater than the supply. There never was a better opportunity for the fruit growers to make big money growing these raspberries than is offered now. As a raspberry for the family fruit garden it has no peer; you can have fine, large, deliciously flavored berries on your table fresh from the vines in early spring, summer and all during the fall months by planting the "King of Market."

I consider your King of Market Everbearing Raspberry the greatest acquisition in way of small fruits I have ever seen. Berries the largest, sweetest, finest flavored and the most productive of any other raspberry.—Harry B. Row, Prop. Lone Cedar Farm.

**ST. REGIS.** Another Everbearing raspberry; very early, bright red color, fine flavor and produce fruit from early spring till fall. Fruit small to medium size, firm and a good shipper.

**JUNE RED RASPBERRY.** Originated and put out by the New York State Agricultural Experiment Station. It has been grown long enough to show its general adaptability and remarkable characteristics. Extremely early; there is no other raspberry that can equal or approach it in its large and beautiful colored berries. Fruit extra large, with quality unsurpassed. The canes grow very tall, are nearly smooth, hardy and very productive.

**CUTHBERT.** Bright red; this valuable well tested variety has given fine results both for home use and market. Vigorous grower, productive, thrifty, rank grower. Fruit large, bright red, good quality and easily picked.

**EARLY KING.** This valuable variety is 10 days earlier than Cuthbert, bears 10 days longer, more productive, larger and do not fall off when ripe. Canes extremely hardy, very healthy and always loaded with fine, large berries.

**HONEYSWEET.** Originated in Western New York where it has been planted very extensively and is a great favorite. Berries are large, glossy black, extremely firm and are remarkably rich, of honey sweetness and very luscious. Canes strong, upright grower of ironclad hardness and a great yielder.

**WELCH (HONEY).** Red. So sweet and rich in flavor, and is known as "Honey Raspberry." Berries large size, good bright crimson color and honey sweetness, melting and luscious; very fine quality. Canes vigorous, hardy and productive; especially recommended for home use and market.

**CUMBERLAND.** Berries large, jet black, firm, sweet, mild and good quality. Canes rank grower, productive and an old standby.

**BLACK PEARL.** Fruit glossy, jet black, very large, firm, and picks easily. Clusters and berries very large and long. Canes hardy, thrifty and productive.

**PLUM FARMER.** Berries jet black, thick meated, firm, large, handsome and fine quality. Season early, maturing its crop in a short time. Canes hardy, healthy and productive.

**ROYAL PURPLE.** This is a purple colored berry of extra large size. Fine flavor, good for canning. Heavy yielder, thrifty, very hardy, enduring a temperature of 35 degrees below zero without injury.



Honeysweet Black Raspberries

## A VERY PROFITABLE CROP

Blackberries are among the best known and most valued of our berries. No fruit of any kind is more wholesome. A liberal use of berries and other fruit will save doctors' bills. Blackberries should be planted in every home garden; as a money-maker they cannot be beaten; they are easily grown and succeed on any and all the different kinds of soil.

**AMBROSIA BLACKBERRY.** The earliest blackberry in cultivation ripening 10 days earlier than Early Harvest, earlier than any dewberry; ripening with the earliest raspberries and before all strawberries are gone. Berries extra large, long, meaty, sweet, mild, of exquisite flavor and surpassing quality; rich in sugar and free from the bitter taste contained in most blackberries; firm texture, compact and free from any hard core; seed small, so soft that the whole berry melts in one's mouth while eating. Berries hang in large, long clusters more like grapes, easily picked, do not scald, rust or blight and hold their large size through the entire season. Berries very attractive and fine for the table, pies, jelly, jam and blackberry juice. Canes are absolutely always and everywhere hardy, thrifty and enormously productive, producing \$5.00 per case on account of their extreme earliness, fine flavor, large size and fine appearance.

## WHAT A PROMINENT FRUIT GROWER SAYS OF AMBROSIA

The Ambrosia Blackberry is the largest, earliest and best flavored blackberry I have ever seen or tasted. I think it is the best money-making blackberry on the market; I am so favorably impressed with this wonderful extra early berry that I am going to plant 500 plants regardless of price.—H. W. Beecher, of Illinois.

## Price of Blackberries

Our plants are grown from root cuttings and are much better than sucker plants. The roots are planted in the nursery rows and are cultivated one season and taken up with a mass of roots.

	—By Mail, Postpaid—				By Express, Not Prepaid—			
	3	Doz.	25	100	100	250	1000	
Ambrosia .....	\$0.50	\$1.25	\$2.00	\$7.50	\$7.00	\$16.00	\$60.00	
Hoco .....	.50	1.25	2.00	7.50	7.00	16.00	60.00	
Texas Everbearing ..	.50	1.50	2.50	9.00	8.50			
La Grange .....	.45	1.10	1.75	6.00	5.50	12.50	45.00	
Blowers Giant .....	.45	1.10	1.75	6.00	5.50	12.50	45.00	
Early Harvest .....	.40	1.00	1.75	5.50	5.00	11.00	40.00	
Eldorado .....	.45	1.10	1.75	6.00	5.50	12.50	45.00	

## Selected Dewberries

**GARDENA.** The earliest and largest dewberry known. Its superior points are extreme earliness, extra large size, great productiveness, its black glossy color. Fruit very firm, sweet, juicy and delicious; fine for eating in pies, jellies, jam, and makes excellent juice or wine.

## Price of Dewberries

	—By Mail, Postpaid—				By Express, Not Prepaid—			
	3	Doz.	25	100	100	250	1000	
Gardena .....	\$0.40	\$1.25	\$2.00	\$3.25	\$3.00	\$6.75	\$27.50	
Lucrertia .....	.30	1.00	1.75	3.00	2.75	6.50	25.00	
Austin's Improved ..	.30	1.00	1.75	3.00	2.75	6.50	25.00	

## Price of Raspberries

	—By Mail, Postpaid—				By Express, Not Prepaid—			
	3	Doz.	25	100	100	250	1000	
King of Market.....	\$0.50	\$1.25	\$2.00	\$7.00	\$6.50	\$16.00	\$60.00	
King of Cliffs.....	.50	1.25	2.00	7.00	6.50	16.00	60.00	
St. Regis .....	.40	1.00	1.50	5.00	4.50	11.00	40.00	
June .....	.35	.90	1.50	5.00	4.50	11.00	40.00	
Cuthbert .....	.30	.80	1.25	3.75	3.50	8.00	30.00	
Early King .....	.30	.80	1.25	3.75	3.50	8.00	30.00	
Honey Sweet .....	.50	1.00	1.75	6.00	5.50	13.00	50.00	
Welch (Honey) .....	.50	1.00	1.75	6.00	5.50	13.00	50.00	
Cumberland .....	.40	1.00	1.75	4.00	3.50	8.00	30.00	
Black Pearl .....	.40	1.00	1.75	4.00	3.50	8.00	30.00	
Plum Farmer .....	.40	1.00	1.75	4.00	3.50	8.00	30.00	
Royal Purple .....	.45	1.00	1.75	5.00	4.50	11.00	40.00	

# Hardy Grapes

## FOR THE MILLIONS AND THE MILLIONAIRES

The grape is the most healthful of all fruits, and the most highly esteemed for its many uses. It can be and should be grown by everyone who has a garden, a yard, a fence or a wall. It can be confined to a stake, bound to a trellis, trained over an arbor, or extended until it covers a large tree or building, and still it yields its graceful bunches of luscious fruit. They are hardy, vigorous, productive and begin to bear the second or third year. Surely no one will allow their family to be deprived of fine, delicious grapes when they can be produced so easily in the garden or yard.

## The Hubbard Grape

**The Famous Table Grape.** The finest early black grape, the sweetest, richest and most delicious grape yet produced. The texture is tender, pulp melting, flavor pure and refined, brist, refreshing and of honey sweetness. There is no other grape approaches it in fine quality or flavor. Ripening 10 days before Concord, Hubbard is so rich in sugar it is excellent in flavor 10 days before it is ripe. It is beyond doubt the sweetest and best flavored of any grape including the California and European varieties. Bunches extra large, very compact and solid; berry extra large, jet black with a thin skin; seeds few and small which separate freely from the tender pulp. The fruit sells in the open market for double the price of any other variety. The vine is a vigorous grower, enormously productive, very often yielding 40 to 60 pounds on a single vine. The fruit is absolutely immune to rot; it has never been known to winterkill, and always yields a full crop and ripens up to perfection. Hubbard is an ideal grape for the North where early extra hardy varieties are wanted, and thrives on any kind of soil and should be planted in every garden. We consider the Hubbard by far the best grape for the table; for jellies, canning, preserving and for grape juice it is unsurpassed. The Hubbard was awarded the Wilder silver medal by the American Pomological Society at its meeting in Berkeley, Cal., in competition with California's best varieties. This grape is in great demand by all grape growers everywhere.

**THE NOTED WILDER SILVER MEDAL HAS BEEN AWARDED THIS WONDERFUL GRAPE.** THE AMERICAN POMOLOGICAL SOCIETY GAVE ITS GREATEST PRIZE TO THE HUBBARD GRAPE; THIS BEING THE GREATEST AND HIGHEST TRIBUTE EVER GIVEN ANY BLACK GRAPE.

THIS SOCIETY FOR 75 YEARS HAS BEEN THE GREATEST AND BEST AUTHORITY PERTAINING TO ALL FRUITS IN AMERICA AND NO GREATER ENDORSEMENT COULD BE BESTOWED ANY GRAPE. THIS SOCIETY REALIZED THAT NO OTHER GRAPE COMPARED WITH THIS WONDERFUL VARIETY AS TO FINE SWEET FLAVOR, LARGE SIZE AND HANDSOME APPEARANCE.

**NIAGARA.** White. The bunch is large, handsome, compact and shouldered. The berries are large, tender and very sweet. The skin is thin but tough, and the bunch makes a fine appearance. Vine vigorous, productive, free from disease and a popular grape.

**MCKEE.** Mammoth black grape; bunch and berry large, compact; berries usually 3 inches in circumference; berry tender, rich, superior to almost all other varieties and takes first rank as the best large grape.

**WORDEN.** Black. This excellent grape is as hardy, healthy, vigorous and productive as the Concord, of which it is a seedling, but better in quality, sweeter, larger in bunch and berry, and several days earlier. Tender but tough skin and is valuable for the garden.

**CONCORD.** Black. This is a very popular market and garden grape. Bunches large, juicy and sweet. It ripens early to mid-season, maturing its fruit before frost.

**CATAWBA.** Well-known as the great wine grape of the country. Bunches and berry large of a copper red color, becoming purplish when fully ripe.

**BROWN'S SEEDLING.** An early grape of exceptionally good quality. Ripens a week or 10 days before Moore's Early and the markets will take them readily at the highest prices. It possesses all the good qualities wanted in a commercial grape, hardy, healthy, strong-growing, good foliage, heavy yielder, hangs well, does not crack in wet weather or shatter from the bunch; is a splendid shipper and an excellent table grape.

## Price List of Grape Vines

### Strong Well Rooted Vines

	—By Mail, Postpaid—				By Express, Not Prepaid—			
	Each	Six	Doz.	Doz.	25	100		
Hubbard .....	\$0.75	\$3.50	\$6.00	\$5.50	\$6.50	\$25.00		
Brown's Seedling.....	.40	2.00	3.75	3.50	6.00	20.00		
Catawba .....	.40	2.00	3.50	3.25	6.00	20.00		
Campbell's Early.....	.40	2.00	3.50	3.25	6.00	20.00		
Concord .....	.30	1.75	3.00	2.75	5.25	20.00		
Empire State .....	.40	2.00	3.75	3.25	6.50	25.00		
Elvira .....	.40	2.00	3.75	3.50	6.00	22.00		
Lucile .....	.40	2.00	3.75	3.50	6.50	20.00		
Marvelous .....	.40	2.00	4.00	4.75	8.00	25.00		
Caco .....	.40	2.00	4.00	4.75	8.00	25.00		
McPike .....	.40	2.00	4.00	3.75	6.50	25.00		
Moore's Diamond.....	.40	2.00	4.00	3.75	6.50	25.00		
Niagara .....	.40	2.00	3.75	3.50	6.50	25.00		
Worden .....	.40	2.00	4.00	3.75	6.50	25.00		
Daisy .....	.40	2.00	3.75	3.50	6.50	25.00		

### Collection No. 1

- 1 Caco grape, red
- 1 Marvelous, black
- 1 Moore's Diamond, white

3 strong vines for \$1.00, postpaid.

### Collection No. 2

One strong vine each of the above 15 varieties, 15 vines in all for \$5.00, prepaid. From this collection you can have grapes from the very earliest to the latest red, white and black—all colors.



Hubbard



# Apples

The apple is the king of fruits. It is a tonic as well as a nutrient, and one of the cheapest and most wholesome foods. There's a lot of truth in the old saying, "An apple a day keeps the doctor away." Apple trees will grow wherever corn can be raised, in fact there isn't a state in the Union where some variety of apple will not thrive. Every home garden and farm should have at least a few apple trees of summer, fall and winter varieties.

**Apple Yield Per Acre**—Plant Bradley trees, hardy, upland grown, propagated from bearing trees of the best pedigree bearing qualities of the greatest yielders and get started right. An average yield from such trees with good management with mature trees is 250 Barrels @ \$7.50 = \$1,875.00

## Summer Varieties

**EARLY HARVEST.** Medium to large size; pale yellow; tender, with a mild, fine flavor. Tree productive and one of the first to ripen.

**YELLOW TRANSPARENT.** Extremely hardy; a beautiful clear yellow, with smooth, waxy, brilliant skin, which gives it a transparent appearance. Fine grained white flesh, sprightly sub-acid, pleasant. Unequalled for pies, for and apple sauce. Large size. Tree a good grower, producer and bears the third to fourth year.

**LIVELAND RASPBERRY.** Beautiful red and yellow apple; medium size; flesh snow-white, tender, fine-grained, crisp and juicy. Tree is a strong, vigorous grower; bears enormously like the Duchess. Thrives everywhere. Bears fourth to fifth year. A great market variety.

**WILSON RED JUNE.** Large size, deep red color, flesh firm, fine grained and excellent flavor. Fine for home use or market. Tree hardy, vigorous and productive.

**WILSON RED JUNE.** Very early; medium size, dark red; flesh is crisp, tender, juicy and sub-acid. Use it—it is a money-maker. It is ready for market just about the time people are growing hungry for new apples and it brings top prices.

## Late Fall and Winter Varieties

**DUCHESS OF OLDENBURG** **STAYMAN'S WINESAP**  
**MAIDEN BLUSH** **WINTER BANANA**  
**WEALTHY** **DELICIOUS**  
**ALEXANDER** **ROME BEAUTY**  
**GRIMES GOLDEN** **MANMOUTH BLACK TWIG**  
**JONATHAN** **TRANSCENDENT CRAB APPLE**  
**TALMAN SWEET** **GANO**

## Standard Price List of Apple Trees

	Each	Six	Doz.	25	100
2-year, 3 to 5 ft.	\$0.65	\$3.60	\$7.00	\$13.50	\$55.00
2-year, 4 to 6 ft.	.75	4.20	8.00	15.00	58.00
1-year, 2 to 3 ft.	.45	2.40	4.60	9.00	35.00
1-year, 3 to 5 ft.	.55	3.00	5.75	10.50	40.00

We advise planting good, thrifty one-year-old trees as you break off less roots, the tree thus starting to grow quicker, making a longer lived tree. Our one year "whole root" trees are extra fine, well rooted and will give good results and entire satisfaction.

# Pears

**LINCOLN.** By far the greatest pear ever introduced. The great "blight-proof pear"; heavy croppers living and bearing heavy crops long after other varieties are dead and gone. The old original tree, now 81 years old, still bearing heavy crops of fine, sweet juicy and delicious pears after standing the blizzards of winter and droughts of summer for nearly a century. Today it is the pear sensation of the fruit kingdom, best for eating fresh, canning, preserving and very handsome. Larger and better quality than Bartlett or Seckel. Brings the highest prices, selling for \$3.00 to \$4.00 a bushel, being so large, handsome and beautiful that it attracts the attention of everybody.

**The Average Yield Per Acre of a Good Pear Orchard is 500 Boxes at \$4.00 = \$2,000.00.**

**BARTLETT.** The best known high quality pear. Famous for dessert and canning. Large; yellow, waxy skin; rich, juicy, highly perfumed; refreshing. Tree hardy, regular, prolific bearer.

**SECKEL.** A beautiful and delicious pear that is the standard of excellence in its class. One of the richest and highest flavored pears known; always in demand for desserts and luncheons.

**FLEMISH BEAUTY.** Large, beautiful, juicy, melting, rich and fine; strong grower and good bearer; hardy everywhere.

**COMICE.** An excellent high quality pear. Fruit large, golden yellow; fine grained and rich.

**GARBER.** Medium size yellow pear; hardy, productive, dependable, fair quality.

**KEIFER.** The pear for the millions; fruit large, rich, golden yellow, tinged with red.

**CLAPP'S FAVORITE.** Large size; pale lemon yellow; flesh fine grained, juicy, melting, rich and buttery. Tree hardy, prolific and good and juicy.

**WINTER NELIS.** The great winter sugar pear. The largest, latest, best keeping pear; can be held in cold storage until spring or as long as any winter apple. The pear is very sweet, spicy and juicy.

## Price for All Varieties of Standard Pear Trees

	Each	Doz.	25	100
Largest size, 2-year-old, first-class, height 4 to 6 ft.	\$0.85	\$8.50	\$17.00	\$65.00
Medium size, 2-year-old, first-class, height 3 to 5 ft.	.75	7.00	14.00	55.00
Smaller size, 1-year-old, height 2 to 4 ft.	.60	6.00	11.50	45.00

# Gooseberries

Plant in good, rich soil and give a liberal dressing of manure every season. Regular pruning every year is essential for the production of fine fruit.

**OREGON CHAMPION.** A great yielder, yielding four times as many bushels an acre as the Downing; very often producing 2,000 gallons on an acre. Fruit a beautiful yellow, fine quality, thick skin, very large, smooth and very attractive. Vines very hardy, thrifty and free from mildew.

## Price of Gooseberries

—By Mail, Postpaid—				By Express, Not Prepaid—		
	Each	Six	Doz.	Doz.	25	100
Poorman's Delight...	\$.45	\$2.50	\$4.75	\$4.50	\$ 9.00	\$35.00
Oregon Champion...	.50	2.75	5.25	5.00	10.00	40.00
Carrie & Josselyn...	.45	2.50	4.75	4.50	9.00	35.00
Pearl & Downing...	.45	2.50	4.75	4.50	9.00	35.00

## Gooseberry Collection

One strong vine each of the 6 varieties for \$2.00, prepaid.

# Peaches

**J. H. HALE.** Another large yellow freestone peach, ripening 10 days before Ponderosa and about with Elberta. Flesh solid, tender and excellent quality. Fruit sells well on market, but not so fine in flavor as Ponderosa. August.

**ELBERTA.** A large, yellow freestone commercial peach, more extensively planted than any other variety. A beautiful peach of good quality, fine for orchard or garden.

**EARLY ELBERTA.** Very large, high quality, lemon yellow freestone peach. Flesh fine grained, sweet; for home use or market. Tree a good bearer and moderately hardy.

**RED BIRD.** Gloriously red all over; large as Elberta and the first big peach that is ready for market. A sensation everywhere, bright glowing red color, flesh white, sweet and juicy. Early in spring people are fruit hungry and will pay big prices for good early peaches. June.

**MAYFLOWER.** A gloriously beautiful "red all over" peach; the earliest of all peaches. Every home orchard should plant Mayflower; it should be in gardens everywhere. Flesh creamy white tinted with red; juicy, sweet and good.

**MAMMOTH HEATH CLING.** One of the sweetest, juiciest, and most luscious of peaches, the housewife's favorite for canning and preserving. Large creamy white, red blush; good shipper.

**CARMAN.** Fruit large, creamy white with deep blush; flesh tender, fine flavor and very juicy; very hardy and productive every year. A great favorite with many growers as it is one of the most profitable varieties ever introduced. Fruit stands shipping well and is good for orchard or garden. July.

**ILLINOIS.** White freestone. Large, better quality and better shipper than Champion; good for home use and market. Creamy white color with a red crimson cheek; flesh firm, juicy, very sweet of high quality and large size.

**CHAMPION.** Fruit large, beautiful and showy; delicious flavor, creamy white skin with a red cheek. July.

**BELLE OF GEORGIA.** Very large, white freestone peach with a red cheek. Flesh white, firm and good flavor. Tree thrifty grower and very productive. August.

**KRUMMEL OCTOBER.** Yellow freestone. The largest, hand-somest and best of all late peaches; fine quality, fine texture, firm, sweet and juicy. Tree hardy, productive and bears young. Fruit hangs long after ripe without rotting. Middle of October.

They bear in 2 years. You don't have to wait. Peach Collection —Earliest and Latest.

One select peach tree each of the above 12 varieties for \$3.00, delivered free. Guaranteed to live.

## Price of Peach Trees

	Each	Six	Doz.	25	100
Large size, first-class, height 4 to 6 ft.	\$0.50	\$2.75	\$5.00	\$9.50	\$36.00
Medium size, first-class, height 3 to 4 ft.	.45	2.50	4.50	9.00	35.00
Small size, 1 to 2 feet.	.35	2.25	4.00	8.00	30.00

# Nectarines

**RED ROMAN.** Clingstone. A very large round fruit; color greenish yellow with a brownish red cheek. Flesh firm, melting, rich and high flavor.

**NEW WHITE.** Nearly round, with very tender white flesh; rich, juicy flavor, with a small stone; free. First-class tree, 4 to 5 ft., 50c; 3 for \$1.00.

# Plums

## Price of Two-Year-Old Plum Trees

	Each	Doz.	25	100
Large size, first-class, height 4 to 6 ft.	\$0.75	\$8.00	\$15.00	\$55.00
Medium size, first-class, height 3 to 4 ft.	.60	6.50	13.00	50.00

**MAMMOTH GOLD.** A great big luscious, red blushed, golden plum of enormous size; extremely early and bring fancy prices on market and supplies the table before other varieties are ripe.

**AMERICA.** Very early; large glossy red, very beautiful; firm, sweet and juicy.

**ABUNDANCE.** Tree a rapid grower, very productive, comes into bearing when quite young.

**BURBANK.** Tree extremely hardy, succeeds everywhere. Fruit large, oval, reddish purple skin.

**OMAHA.** Very large, round, dark rich red; flesh meaty and delicious. Tree extremely hardy.

**LOMBARD.** Very large, reddish plum. It is a great favorite because it is an early bearer.

## Prof. Hanson's New Plums

**HANSKA.** Tree very hardy and rapid grower, comes into bearing at 2 years old. Fruit very large, measuring 1 1/2 inches in diameter. Best quality for eating from the tree, canning and preserving.

**OPATA.** Begin to bear at one year old, and enormously productive, hardy, thrifty and a fine grower. Fruit remains on the trees a long time and does not rot; dark purplish red.

**SAPA.** An extremely early bearer. A great yielder, excellent shipper; brings the highest price.

**WANETA.** This is the greatest plum ever introduced by Professor Hanson. The most delicious and sweetest of all plums. Good red color, thin skin, small pit and a long keeper.

**KAGA.** A great market variety, very large, productive and fine quality. Tree extremely hardy.

# Currants

Wholesale price of Currants, 30c each; 6 for \$1.50; doz. for \$2.75 EVERYBODY'S. Can be grown by everybody. Plant a strong healthy grower, hardy and very productive.

**PERFECTION.** In color it is a beautiful bright red, a third larger than the Fay; clusters longer and very productive, fine quality, rich mild flavor.

**DIPLOMA.** Large, solid and of good quality; very attractive; clusters and berries very large.

**RED CROSS.** A strong, hardy grower; very productive; clusters long; berry large, bright red.

**FAY'S PROLIFIC.** Clusters medium to long; berry large, bright red, juicy and mild.

**BLACK CHAMPION.** Bush vigorous, hardy and productive; fruit large, juicy and of mild, sweet flavor.

## Currant Collection

One strong bush each of the 6 varieties for \$1.50 by parcel post, prepaid.

# Cherries

## Price of Two-Year-Old Cherry Trees

	Each	Doz.	25	100
Large size, first-class, height 4 to 6 ft.	\$1.25	\$13.00	\$25.00	\$90.00
Medium size, first-class, height 3 to 4 ft.	1.00	10.50	20.00	75.00

**BALDWIN.** Fruit very large, dark red, the sweetest and richest of all sweet cherries.

**EARLY RICHMOND.** This hardy cherry fruits on young trees soon after planting.

**MONTMORENCY.** A beautiful, large, red cherry; much larger and firmer than Early Richmond.

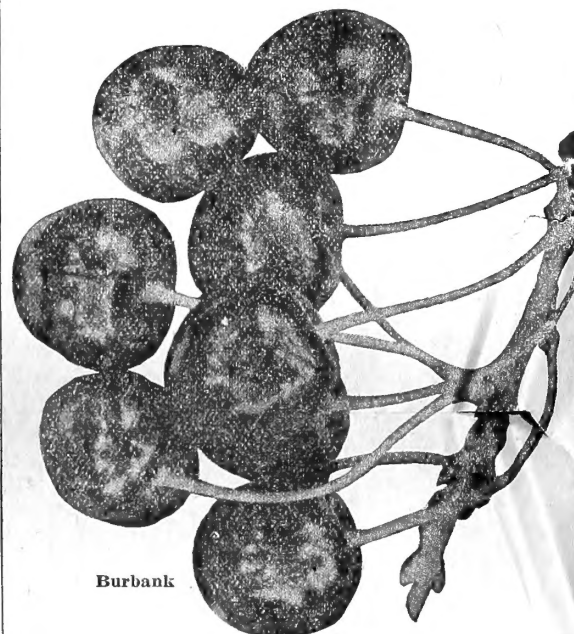
**ENGLISH MORELLO.** Produces a heavy crop annually. Fruit dark red, quality good.

**WRAGG.** Much like English Morello; larger, more productive and better quality.

**ROYAL ANN.** This is one of the largest and best of all sweet cherries.

**ABUNDANCE.** Seedling of Royal Ann. Fruit much larger, measuring three and one-half inches in circumference. Ripens one week later than Royal Ann, is sweeter, richer and more delicious and will outyield any other variety known. One of Burbank's productions. Price, 4 to 6 ft. trees, \$1.50 each.

**BURBANK.** The earliest of all large cherries; extremely large, very attractive, deep crimson color, and superior quality. Very productive and bring the highest market price on account of extreme earliness. This cherry means big profits to you. Two-year-old trees, 4 to 6 ft., \$1.75 each.



Burbank

# Rhubarb or Pie Plant

This deserves to be ranked among the best early vegetables of the garden. Scarcely has the grass begun to grow when your table can be well supplied with this earliest of all vegetables. Excellent for sauce and pies, continues long in use and is valuable for canning for winter use. Should be in every garden or lot as you get more value for your money than any other vegetable grown.

**BURBANK'S GIANT CRIMSON** is one of the greatest and most valuable novelties we have ever offered. It is the earliest, tenderest, sweetest and best of all rhubarb; fit for use not only a few weeks in the spring, but all spring, summer and fall, while the common sour sorts are fit to use only a few weeks in the spring. As fast as stalks are pulled, new ones take their places. Scarcely has the frost disappeared till your table is supplied with this delicious, refreshing and healthful article of food which is so much desired and appreciated. The stalks are twice the size of the ordinary kind and of a bright crimson color, very tender, crisp and of mild delightful flavor; the skin is so tender it does not have to be removed when cooking and the sauce has a deep crimson color. Stalks average 18 to 24 inches in length, broad, thick and solid. Enormously productive, bring high prices and is a great money-maker and in great demand. Try a dozen or two, my word for it, you will never have cause to regret the purchase.

Price, whole roots by mail: 4 for 50c; doz., \$1.50, postpaid; 25 for \$2.00; 50 for \$3.75; 100 for \$7.00, by express.

**NILES GIANT.** New. Originated in California. Stalks very large, tender, crisp, juicy, sweet and very delicious. It is a very rapid grower, early, has deep red stalks which give the sauce when cooked a fine light red color. This variety is so sweet that it needs but very little sugar; do away with the old expensive sour varieties and plant the Niles Giant and Burbank's Giant. This is a very promising variety and we want all to give it a trial. Price whole roots: 3 for 50c; 7 for \$1.00; 15 for \$2.00; 50 for \$5.00, prepaid.

## SPECIAL OFFER

For \$2.50 we will send one dozen of each of the above two varieties, prepaid. These 24 hills will make enough for any ordinary family.

## Northern-Grown Nut Trees

### Pecans, the Coming Food Crop

The pecan as grown in the North is perfectly hardy and is found growing throughout the Mississippi Valley and as far north as Wisconsin, Michigan and Canada. Our hardy pecans are thin shell, large size and very productive. Our pecans are budded and grafted. Never plant seedlings because it takes them too long to come into bearing, besides they are not reliable. The Northern pecan is the coming nut for the millions and the millionaires.

**ILLINOIS PECAN.** Originated near Ware, Illinois. The parent tree measures 6 feet in circumference, is 50 feet high, with a 30-foot spread, and produced 528 pounds of nuts in 1920 which brought readily 30c a pound, wholesale. An acre of such pecans is worth \$800 to \$1,200 annually to the owners. The nuts are very large, and a real paper shell, easy crackers, crisp and fine flavored. Nuts in clusters of 5 to 6, weighing 45 to 50 nuts to the pound.

**WALTON PECAN.** Similar to the Illinois pecan, only the clusters contain 4 to 5 and it takes about 55 nuts to a pound, but the clusters are closer together and will produce more pounds to the tree.

**MANTURA PECAN.** Native of Virginia; tree very hardy, productive, vigorous and begins to bear one year after planting. Meat of medium size; paper shell, crisp and of fine flavor.

**INDIANA PECAN.** Thought to be a seedling of Busserson as the tree is younger and located near the Busserson tree. The nut is very large, shell soft, kernel full and of excellent quality. Tree the greatest bearer of any pecan tree we have ever seen, either North or South, and very desirable for any purpose.

### Filberts

**KENTISH COB.** English. Tree very hardy, thrifty and bears first year after planting. Nut large, oblong, meaty, full and very fine quality. Tree or bush grows 6 to 8 feet high and very productive.

### Price of Nut Trees

	Height	Each	6	Doz.
Pecans	2 to 3 ft.	\$1.00	\$5.50	\$10.00
Pecans	3 to 4 ft.	1.25	6.00	11.00
English Walnuts	2 to 3 ft.	1.00	5.50	10.00
English Walnuts	3 to 4 ft.	1.25	6.00	11.00
Black Walnuts	2 to 3 ft.	.75	4.00	7.50
Black Walnuts	3 to 4 ft.	1.00	5.50	10.00
Chestnuts	2 to 3 ft.	1.00	5.50	10.00
Chestnuts	3 to 4 ft.	1.25	6.00	11.00
Shellbarks	2 to 3 ft.	1.50	8.50	....
Shellbarks	3 to 4 ft.	2.00	11.00	....
Shagbarks	2 to 3 ft.	1.50	8.50	....
Shagbarks	3 to 4 ft.	2.00	11.00	....
Almonds	2 to 3 ft.	.75	4.00	7.50
Filberts	2 to 3 ft.	.50	2.75	5.00

## Hardy Shrubs

### For Permanent Planting

**DOUBLE JAPAN SNOWBALL.** Blooms in early June, when the whole bush is loaded down with great, compact balls of pure white, double flowers. They are borne in such great profusion that the entire plant appears one dense mass of bloom; the tree grows erect and bushy, 6 to 8 feet high, with deep green leaves. Price, large field-grown plants, 2-year size, 50c each; 3-year size, 75c each.

**ALTHEA, OR ROSE OF SHARON.** Large single flowers somewhat resembling the hollyhock, grows 8 to 12 feet tall and blooms in May or June. We have either blue, white, purple or red. Price, 2-year-old size, 50c; one of each of the 4 colors, \$1.60.

**BUTTERFLY BUSH.** Blooms from early summer till frost; splendid for cutting. Produce long, beautiful lilac-colored flowers of very large size and borne by the hundreds on a flower head often 10 inches long. Price, large bush sizes, 50c each; 3 for \$1.00, postpaid.

**CALYCANTHUS (Sweet scented shrub).** The wood is fragrant; foliage rich; produce round heads full of white flowers through July. Large size, 50c; 3 for \$1.00.

**DEUTZIA CRENATS.** Double flowering; covered with large pure white flowers through June. Large size, 50c; 3 for \$1.00.

**DEUTZIA LEMOINEI.** Flowers very large, pure white and produce freely. Large size, 50c; 3 for \$1.00.

**FORSYTHIA (Golden Bell).** Bears long rows of bright yellow flowers before the leaves appear and is very handsome and attractive. Large size, 50c; 3 for \$1.00.

**PHILADELPHUS (Mock Orange).** Highly valued; flowers pure white, very fragrant, sweet scented and very attractive; blooms in May. Large size, 50c; 3 for \$1.00.

**HYDRANGEA, P. G.** Blooms in August and September. Flowers are rich, creamy white, changing to pink, and borne in immense clusters often a foot long and continues in bloom for months. Large size, 40c; 3 for \$1.00.

**HYDRANGEA ARBORESCENS (Hills of Snow).** Covered with large white flowers from spring till fall. Large size, 50c; 3 for \$1.00.

### Four Choice Spireas

**ANTHONY WATERER.** A perpetual blooming red spirea. Begin to bear rich, red flowers as soon as planted and continue all summer and fall.

**BRIDAL WREATH.** Flowers white and double like roses, borne in great profusion.

**VAN HOUTTE'S.** An immense bloomer of pure white flowers all through May and June.

**BLUE SPIREA.** This is the finest blue-flowering shrub we have. Price of spireas: 3-year size, 50c; 3 for \$1.00; doz., \$3.50.

### Four Very Fine Lilacs

**CHARLES X.** Large, reddish purple flowers; trusses open and free.

**MME. LEMOINE.** Extra choice, double flowered white, very fragrant, shining flowers, which are very attractive.

**OLD-FASHIONED WHITE.** Everyone knows this valuable plant, producing great clusters of sweet-scented flowers in spring.

**OLD-FASHIONED PURPLE.** As popular as the white; in May the plant is covered with large clusters of light purple flowers; popular everywhere.

**WEGELIA EVA RATHKE.** Flowers of a brilliant crimson color; blooms all summer and when in full bloom the whole plant fairly glows with color. We consider this the finest of all wegelias.

**WEGELIA ROSEA.** Rose colored flowers; blooms from May till fall; borne in long, graceful sprays. Thrives everywhere and is very hardy.

**WEGELIA CANDIDA.** Flowers pure white, borne in great clusters in June and occasionally throughout the summer; fine foliage and hardy.

Price of wegelias: 2-year size, 50c; one each of the 3 varieties, \$1.25.

### Hedges

**BARBERRY JAPANESE.** Graceful arching twigs. Red foliage and berries in the fall. Very hardy; quick growers; grows 3 feet tall and makes a fine hedge. Price, 2-year size, 35c; 10 for \$2.50; 100 for \$20.00.

**CALIFORNIA PRIVET.** A very rapid grower under all conditions and has dark green glossy color. Stands severe pruning and used very extensively as a hedge and is much liked. Price, 2-year size, doz., \$1.00; 100 for \$6.00.

### Sweet-Scented Honeysuckle

**EVERBLOOMING HONEYSUCKLE (Heckrottii).** Clear rose, yellow at the base, sweet and fragrant; in constant bloom.

**NEW HALLIANA.** Evergreen and a constant bloomer; flowers pure white, changing to yellow. Very fragrant, hardy and rank grower. Price, 35c each.

## Stokes Roses

### Hardy Garden Roses

Queen of the Garden—Blooms the First Year They Are Planted

The demand for 2-year-old roses has reached enormous proportions, for the reason they yield an enormous lot of blooms the first year planted. Our 2-year-old field-grown roses cannot be surpassed.

### Price of Strong 2-Year-Old Roses

	Each	6	Doz.	25
Strong field-grown...	.....\$0.75	\$4.00	\$7.00	\$13.50

Parcel post—Roses can be sent by parcel post for 3c per bush.

Special Rose Collection No. 1. Dozen roses for \$7.00; 3 red, 3 white, 3 pink and 3 yellow by parcel post, prepaid. Your selection of varieties.

### One-Year-Old Roses

We have a very fine lot of well-rooted 1-year-old roses which will bloom some the first year if well cared for. These roses still have their green foliage and should not be planted in the open till warm weather. These roses do not cost much and with the proper attention will soon begin to bloom.

### Price of 1-Year-Old Roses, Postpaid

	Each	6	Doz.	25
No. 1—One year old.....	\$0.35	\$2.00	\$3.50	\$6.50
Special Rose Collection No. 2. One dozen roses for \$3.50, any variety—your selection. All delivered free, by parcel post.				

### Hybrid Tea—Everblooming Roses

**ANTOINE RIVORIE.** Creamy white, delicately tinted with pink; extra large petals. Full and double and very beautiful.

**SENATOR MASCURAND.** Another yellow; large, full globular flowers of perfect shape; a strong, healthy grower and a free and constant bloomer. A truly yellow rose.

**CLOTHILDE SOUPERT.** A wonderful rose for bedding or pot culture; profuse bloomer, strong grower; white and very fragrant.

**RADIANCE.** Deep rose constantly in bloom; full and deep; very fragrant.

**MY MARYLAND.** Salmon pink; long, pointed buds, very full in bloom and exquisitely fragrant.

**MAMAN COCHET.** Rich rosy pink, very graceful in form from bud to bloom; very fragrant, healthy bloom and dark green foliage, called the queen of pink tea roses.

**KAISERIN AUGUSTA VICTORIA.** Pure white, splendid, large buds and superb, full double bloom, making the choicest cut flowers; blooming steadily from early spring till frost.

**SUNBURST.** Orange copper and golden yellow, all shades, giving an extremely brilliant effect. A giant rose, long stems, long pointed buds; very fragrant.

**RHEA REID.** Large as American Beauty, double as Bridesmaid, fragrant as La France, continuous as Bride and red as Richmond in winter.

**W. R. SMITH.** Creamy white, with shadings of pink; very beautiful; long stiff stems.

### A Rare New Rose

#### Rosa Hugonis

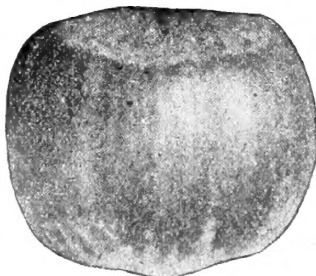
Known to be in bloom during a snow storm. The color is intense canary yellow, very bright and attractive. When in bloom the entire plant is covered with bright, sunny yellow blooms and buds, making a wonderful early spring show. Two-year plants, \$1.50. One-year plants, \$1.00, postpaid.

## Mulberries

Everbearing Mulberries are very rapid growers and come into bearing at 3 years old. Then for months they continue to ripen large quantities of fruit good to eat and fine for the poultry.

**NEW AMERICAN.** Larger than any other mulberry; bears heavy crops at 3 years old. Fruit jet black and excellent quality, in flavor superior to any other variety. Tree a rapid grower, fine shape and form, making a very handsome shade tree for the park or lawn; they bear fruit continuously from May to August. First-class tree, 3 to 5 ft., 50c; 3 for \$1.25.

**DOWNING'S EVERBEARING.** The beauty of this as a lawn or park tree is quite enough to commend it, but in addition it yields an abundant supply of its large refreshing berries for about 3 months. First-class trees, 3 to 5 ft., 50c; 3 for \$1.25.



Kentish Cob Filbert



Rosa Hugonis

Standpat Strawberries bear fine large berries all summer and fall. Will do well anywhere and everywhere.