

Historic, archived document

Do not assume content reflects current scientific knowledge, policies, or practices.



62.01

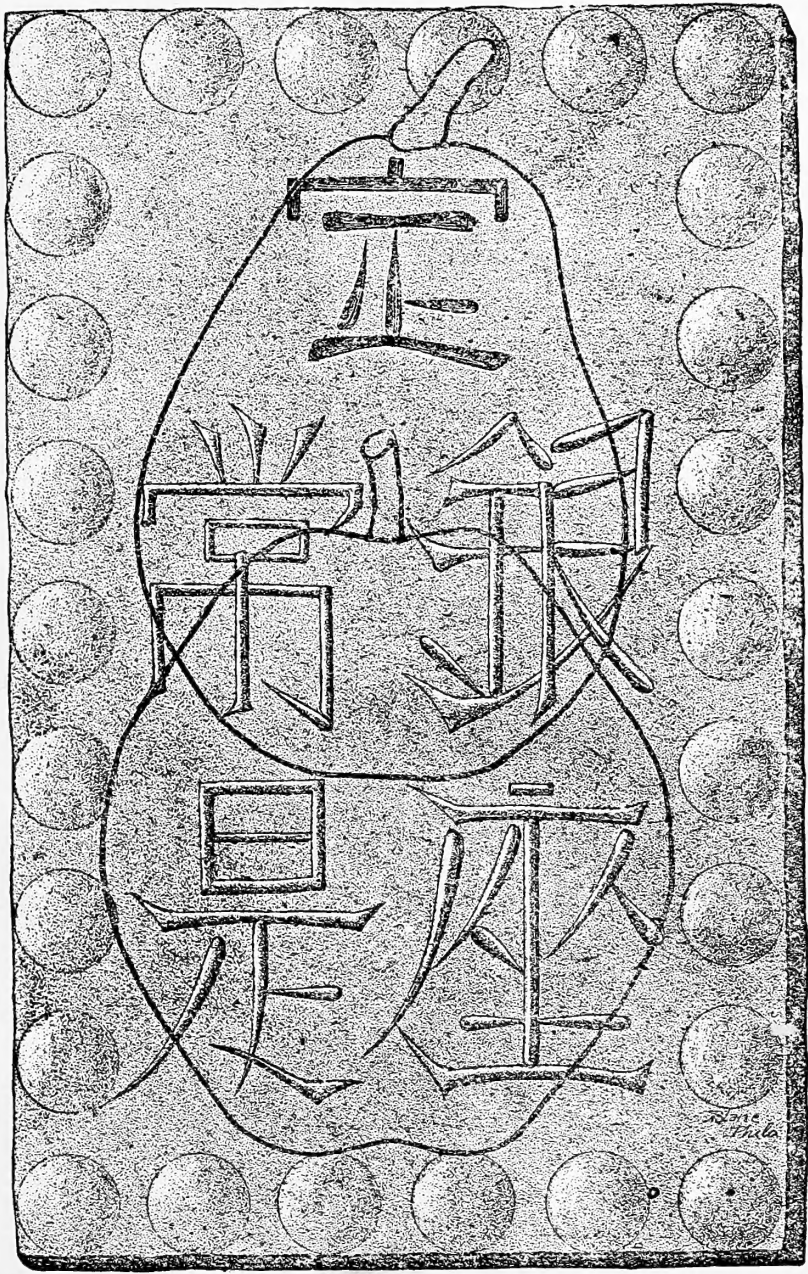
271452

RECEIVED
JAN 23 1925
U. S. Department of Agriculture.

HEIKES :: HUNTSVILLE :: TREES

The Huntsville Wholesale Nurseries, Inc.

Huntsville, Alabama



WHOLESALE PRICE LIST — FOR THE TRADE ONLY
Season 1924-1925

TERMS AND CONDITIONS

We book orders in wholesale quantities only.

For convenience in telegraphing orders or inquiries we have inserted cipher words to indicate grades of various kinds of stock.

RATES—Apply as follows: When 10 trees and not over 50 are ordered the price will be 2½ cents per tree more than the price per 100. Orders for 50 trees or more up to 300, when not less than 10 trees of each variety, will be charged for at the price per 100. Orders for 300 trees or more, when not less than ten trees of each variety, will be charged for at the price per 1000.

SEASON—Our packing and shipping season begins by the 20th of September and continues until the 15th of March.

SHIPPING DIRECTIONS—We respectfully beg our patrons to furnish us with explicit directions as to shipping, and the mode of conveyance by which they wish their stock forwarded. When no particular directions are given we forward according to our best judgment, but in no case do we assume any responsibility as to safe delivery and condition of trees and plants after proper shipment by us.

GUARANTEE OF GENUINENESS—While we exercise the greatest diligence and care to have all our trees, etc., true to label and hold ourselves in readiness, on proper proof, to replace all trees, etc., that may prove untrue to label free of charge or refund the amount paid, it is mutually understood and agreed to between the purchaser and ourselves that our guarantee of genuineness shall in no case make us liable for any sum greater than that originally received for said trees, etc., that prove untrue.

ACCEPTANCE—Notice should be sent us by telegraph, at our expense if there is any cause for complaint, or should the trees, etc., be refused, stating reasons. **CLAIMS FOR DEDUCTION, FROM WHATEVER CAUSE, WILL RECEIVE CONSIDERATION ONLY WHEN MADE PROMPTLY UPON RECEIPT OF THE STOCK.** If trees show any signs of shriveling upon arrival they can usually be restored by being thoroughly watered and buried entirely under the ground for two or three days. Should there be any frost in the trees, etc., upon arrival they should not be removed from boxes until the frost is all out. The box should be placed in the cellar or protected in some way. The presence of frost in the boxes is not to be considered an evidence of bad condition, as we pack to secure the stock against damage, if the frost is allowed to come out the natural way. Goods will be considered accepted if removed from the boxes in which they are packed without notice of complaint to us and without our orders for their disposition.

CAUTION—We accept all orders subject to our crop conditions and also upon the condition that they shall be void should injury befall the stock from frost, hail, storm, fire, or other causes over which we have no control.

TERMS—Usual nurserymen terms. Cash or satisfactory reference is required of parties unknown to us.

PRICES—Are subject to change without notice, and are for stock F. O. B. Huntsville, Alabama, cost of boxes or bales to be added at the following prices:

30 x 30 x 10 feet.....	\$4.00	18 x 24 x 10 feet.....	\$2.75
30 x 30 x 7½ feet.....	3.50	18 x 24 x 7½ feet.....	2.50
24 x 30 x 10 feet.....	3.50	18 x 18 x 10 feet.....	2.50
24 x 30 x 7½ feet.....	3.25	18 x 18 x 7½ feet.....	2.25
24 x 24 x 10 feet.....	3.25	15 x 15 x 7½ feet.....	1.75
24 x 24 x 7½ feet.....	3.00	12 x 12 x 7½ feet.....	1.50

Bales 50 cents and up according to size.

TO THE TRADE

In this Booklet will be found variety lists and prices of all the Nursery Stock we are growing. The space on this page is reserved each year for us to say something of ourselves and our stock. Frankly, the hardest part of making up the new list is to fill this page.

If you were in Huntsville, and we wish it were possible for all of our customers to come to see us, nothing would give us greater pleasure than to take you through our Nursery and to show you what a nice lot of good stock we do have. Growing conditions with us have been almost ideal, plenty rain and sunshine to insure proper development of both root and top.

PEACH—We call particular attention to our offerings in Peach. Our One Year Peach are nice, clean, thrifty, well growing trees and run largely to the most popular sizes, then too, we believe that our list of varieties is complete enough to take care of most any one's wants. The growing of high class Peach trees has been one of our leading specialties for a good many years, and we feel sure that the quality of our trees cannot be surpassed.

PRIVET—Another one of our specialties of which we grow great quantities, paying particular attention to the development of sufficient branches to make these plants highly desirable. This season we have beautiful blocks of California, Amoor River North and Ibota.

ROSES—We have been growing Roses, both budded and on own roots long enough to know how to grow them and also how to grade and handle the plants in a manner satisfactory to the most critical.

SERVICE—With our equipment and organization we are able to make prompt shipment of any orders intrusted to our care and we invite you to wire us when in need of a prompt shipment of any of the stock we are growing. When requested by telegraphic order we will make shipment same day telegram is received, provided the order is not too large to be handled in one day.

DISTRIBUTION POINTS—Another feature of our service is that we use Rochester, New York and St. Louis, Missouri as car lot distribution points and can nearly always arrange to give buyers of less than car lots benefit of car lot rates to these points. We have connections in both these cities who attend to the re-handling and re-shipping promptly. This service effects not only a saving in freight charges but insures prompt delivery of less than car lot shipments. Customers desiring this service will aid us materially by taking it up with us early enough so that we may arrange shipping dates satisfactory to all who have combination cars.

To those who are unacquainted with us we respectfully refer them to either of the Mercantile Agencies or any Bank or Business House in Huntsville, or to any of the leading Nurserymen in the United States.

THE HUNTSVILLE WHOLESALE NURSERIES

(Incorporated)

HUNTSVILLE, ALABAMA

FRUIT TREES

APPLE—Two Year, Grafted on Whole No. 1 Roots

	Cipher	
5 to 7 feet, 11/16 and up, well branched.....	Pave	\$30.00
4 to 5 feet, 9/16 to 11/16, well branched.....	Pawn	20.00
3 to 4 feet, 7/16 to 9/16, branched.....	Pay	15.00

VARIETIES—

Delicious	Red June
Early Harvest	Rome Beauty
Grimes Golden	Stayman Winesap
Jonathan	Winesap

APPLE—One Year, Grafted on Whole No. 1 Roots

4 to 5 feet, whips and branched.....	Peak	20.00
3 to 4 feet, whips and branched.....	Peal	15.00
2 to 3 feet, whips and branched.....	Pearl	12.50

VARIETIES—

Delicious	Red June
Early Harvest	Stayman Winesap
Grimes Golden	Winesap
Jonathan	Yellow Transparent
Northern Spy	

BARTLETT STANDARD PEAR—Two Year, Budded

5 to 7 feet, 11/16 and up, well branched.....	Fable	50.00
4 to 5 feet, 9/16 to 11/16, well branched.....	Fabric	40.00
3½ to 4 feet, 7/16 to 9/16, branched.....	Face	25.00
2½ to 3½ feet, 5/16 to 7/16, partly branched.....	Facet	15.00

STANDARD PEAR—Two Year, Budded

5 to 7 feet, 11/16 and up, well branched.....	Feal	35.00
4 to 5 feet, 9/16 to 11/16, well branched.....	Feast	25.00
3 to 4 feet, 7/16 to 9/16, branched.....	Fear	18.00
2½ to 3½ feet, 5/16 to 7/16, partly branched.....	Feaze	12.00

VARIETIES—

Garber	Keiffer	Leconte
--------	---------	---------

STANDARD PEAR—One Year, Budded

5 to 6 feet, whips and branched.....	Feck	40.00
4 to 5 feet, whips and branched.....	Feed	30.00
3 to 4 feet, mostly whips.....	Feign	25.00
2 to 3 feet, whips.....	Fence	20.00

VARIETIES—

Anjou (Buerre de Anjou)	Keiffer
Bartlett	Koonce
Clapps Favorite	Lawrence
Duchess	*Pineapple
Early Harvest	Seckel
Flemish Beauty	Wilder
Howell	

*Pineapple 10¢ per tree higher than other varieties.

PEACH—One Year

	Cipher	Per 100	Per 1000
5 to 7 feet, 11/16 and up, well branched.....	Rabid	\$23.50	\$225.00
4 to 5 feet, 9/16 to 11/16, well branched.....	Rabble	21.00	200.00
3 to 4 feet, 7/16 to 9/16, branched.....	Race	16.00	150.00
2 to 3 feet, 5/16 to 7/16, partly branched.....	Rack	11.00	100.00

VARIETIES—

Alexander	Early Rose	Late Elberta (Rex)
Arp Beauty	Elberta	Lemon Cling
Belle of Georgia	Greensboro	Mayflower
Beer's Smock	Heath Cling	Old Mixon Free
Carman	Hiley	Rochester
Champion	J. H. Hale	Stump the World
Chinese Cling	Indian Cling	Wonderful
Early Crawford	Krummel's October	Yellow St. John
Early Elberta	Late Crawford	

Write for special prices on large lots.

PEACH—June Buds

3 to 4 feet, well branched.....	Raft	16.00	150.00
2 to 3 feet, partly branched.....	Rafter	11.00	100.00
18 to 24 inches, whips.....	Rag	8.00	70.00
12 to 18 inches, whips.....	Rage	6.00	50.00

VARIETIES—

Belle of Georgia	J. H. Hale
Early Rose	Hiley
Elberta	



PEACH, ONE YEAR

SOUR CHERRY—Two Year on Mahaleb

	Cipher	Per 100
5 to 6 feet, 11/16 and up, well branched.....	Kale	\$50.00
4 to 5 feet, 9/16 to 11/16, well branched.....	Keen	40.00
3 to 4 feet, 7/16 to 9/16, branched.....	Keg	25.00
VARIETIES— Early Richmond	Large Montmorency	

SOUR CHERRY—One Year on Mahaleb

4 to 5 feet, branched.....	Kill	35.00
3 to 4 feet, branched.....	Kind	25.00
2 to 3 feet, branched.....	King	17.50
VARIETIES— Early Richmond	Large Montmorency	
English Morello		

SWEET CHERRY—One Year on Mahaleb

5 to 6 feet, mostly whips.....	Knob	50.00
4 to 5 feet, whips.....	Knoll	40.00
3 to 4 feet, whips.....	Kop	30.00
VARIETIES— Black Tartarian	Governor Wood	Napoleon

WILD GOOSE PLUM—Two Year on Plum

5 to 7 feet, 11/16 and up, well branched.....	Daub	35.00
4 to 5 feet, 9/16 to 11/16, well branched.....	Daut	25.00
3½ to 4 feet, 7/16 to 9/16, well branched.....	Daw	20.00
2 to 3 feet, 5/16 to 7/16, branched.....	Deaf	15.00

PLUM—One Year on Plum

4 to 5 feet, 9/16 to 11/16, well branched.....	Deal	40.00
3½ to 4 feet, 7/16 to 9/16, branched.....	Dean	25.00
2 to 3 feet, 5/16 to 7/16, partly branched.....	Dear	15.00
VARIETIES— Abundance	Burbank	Golden Beauty
Red June	Wickson	

PLUM—One Year on Peach

4 to 5 feet, 9/16 to 11/16, partly branched.....	Deave	25.00
3½ to 4 feet, 7/16 to 9/16, few branches.....	Dab	20.00
2 to 3 feet, 5/16 to 7/16, whips.....	Dace	15.00
VARIETIES— Compass	Hanska	Opata
		Sapa

PLUM—One Year on Peach

4 to 5 feet, 9/16 to 11/16, well branched.....	Dade	35.00
3½ to 4 feet, 7/16 to 9/16, partly branched.....	Daft	25.00
2 to 3 feet, 5/16 to 7/16, whips.....	Dad	15.00
VARIETIES— Abundance	Burbank	Red June
		Wickson

APRICOT—One Year On Peach

5 feet and up, 11/16 and up, well branched.....	Damask	50.00
3½ to 5 feet, 9/16 to 11/16, well branched.....	Dame	35.00
2½ to 3½ feet, 7/16 to 9/16, branched.....	Damsel	25.00
2 to 3 feet, whips.....	Damp	15.00
VARIETIES— Early Golden	Royal	Wilson

NECTARINE—One Year on Peach

4 to 5 feet, 9/16 and up, well branched.....	Neat	30.00
3 to 4 feet, 7/16 to 9/16, well branched.....	Neck	20.00
2 to 3 feet, 5/16 to 7/16, partly branched.....	Nest	15.00
VARIETIES— Boston	Red Roman	

MULBERRY—One Year

	Cipher	Per 100
4 to 5 feet, mostly whips.....	Early	\$25.00
3 to 4 feet, whips.....	Earn	20.00
VARIETIES— Abundance	Downing	Hicks
	New American	Monarch
Black English and Russian 5¢ per tree less than above.		

JAPANESE PERSIMMON

3 to 4 feet, mostly whips.....	Gain	40.00
2 to 3 feet, whips.....	Gainly	35.00
VARIETIES— Hyakume	Triumph	Tane Nashi
	Yemon	Zengi
		Costata

FIGS

3 to 4 feet.....	Fish	35.00
2 to 3 feet.....	Fisher	30.00
18 to 24 inches.....	Fishing	25.00
VARIETIES— Brown Turkey	Celestial	

PECANS—Budded and Grafted

5 to 6 feet.....	Gamble	80.00
4 to 5 feet.....	Gab	70.00
3 to 4 feet.....	Gable	60.00
2 to 3 feet.....	Gaff	50.00
18 to 24 inches.....	Gala	40.00
VARIETIES— Delmas	Frotscher	Moneymaker
	Schley	Stuart
		Success

We reserve the right to ship Pecans direct from our Nurseries in North Florida.

WALNUT—English, Grown from Selected Nuts

3 to 4 feet.....	Hob	60.00
2 to 3 feet.....	House	50.00
18 to 24 inches.....	Hominy	40.00

WALNUT—Japanese

6 to 8 feet, partly branched.....	Hurl	70.00
5 to 6 feet, partly branched.....	Hush	60.00
4 to 5 feet, mostly whips.....	Hutt	50.00
3 to 4 feet, whips.....	Hugh	40.00
2 to 3 feet, whips.....	Hulk	30.00

GRAPES

	2 Yr., No. 1 Per 100	1 Yr., No. 1 Per 100
Agawam.....	\$ 7.50	\$5.00
Brighton.....	7.50	5.00
Catawba.....	7.50	5.00
Concord.....	6.00	4.50
Delaware.....	10.00	7.50
Diamond.....	7.50	5.00
Lutie.....	10.00	7.50
Moores Early.....	7.50	5.00
Niagara.....	10.00	7.50
Salem.....	7.50	5.00
Worden.....	6.00	4.50



CALIFORNIA PRIVET

PRIVET

LIGUSTRUM Amurense (Amoor River Hardy)

3 to 4 feet, 4 branches and up.....
3 to 4 feet, 2 and 3 branches.....
2 to 3 feet, 4 branches and up.....
2 to 3 feet, 2 and 3 branches.....
18 to 24 inches, 4 branches and up.....
18 to 24 inches, 2 and 3 branches.....
12 to 18 inches, 3 branches and up.....
12 to 18 inches, 2 branches.....
6 to 12 inches, 3 branches and up.....
Transplanting grade, single stems, 8 to 24 inches.....

Cipher	Per 1000
Mace	\$100.00
Mack	85.00
Mad	75.00
Maid	60.00
Mail	50.00
Main	40.00
Maize	35.00
Major	30.00
Make	25.00
Malt	20.00

OVALIFOLIUM (California Privet)

3 to 4 feet, 4 branches and up.....
3 to 4 feet, 2 and 3 branches.....
2 to 3 feet, 4 branches and up.....
2 to 3 feet, 2 and 3 branches.....
18 to 24 inches, 4 branches and up.....
18 to 24 inches, 2 and 3 branches.....
12 to 18 inches, 3 branches and up.....
12 to 18 inches, 2 branches.....
6 to 12 inches, 3 branches and up.....
Transplanting grade, single stems, 8 to 24 inches.....

Mango	55.00
Manks	40.00
Manol	35.00
Man	30.00
Manito	25.00
Map	20.00
Marble	15.00
March	12.50
Marcott	10.00
Marcor	9.00

PRIVET—Continued

	Cipher	Per 1000
IBOTA (Upright Ibota Privet)		
3 to 4 feet, well branched.....	Marge	\$ 75.00
2 to 3 feet, well branched.....	Margin	60.00
18 to 24 inches, well branched.....	Marine	40.00
12 to 18 inches, well branched.....	Marital	25.00
REGELIANUM (Regals Privet) from cuttings		
2 to 3 feet, well branched.....	Maritime	200.00
18 to 24 inches, well branched.....	Mark	150.00
12 to 18 inches, well branched.....	Market	120.00
SINENSE (Amoor River—Southern Type)		
2 to 3 feet, well branched.....	Marl	50.00
18 to 24 inches, well branched.....	Marbon	35.00
12 to 18 inches, well branched.....	Marry	25.00

VINES

	Cipher	Per 100
AMPELOPSIS triscuspidata veitchi		
2 year, No. 1.....	Labarum	\$25.00
CLEMATIS, Large Flowering		
2 year, medium.....	Labor	30.00
VARIETIES— Jackmani Madam Ed. Andre Henryi		
CLEMATIS paniculata		
2 year, No. 1.....	Lace	18.00
2 year, medium.....	Lack	12.00
EUONYMUS radicans variegata		
15 to 18 inches, bushy.....	Ladle	20.00
12 to 15 inches, well branched.....	Lady	15.00
HEDERA helix (English Ivy)		
2 year, field grown, very heavy.....	Laggy	50.00
LONICERA japonica halliana (Hall's Japan Honeysuckle)		
2 year, No. 1.....	Lake	15.00
Sempervirens (Scarlet Trumpet Honeysuckle)		
2 year, No. 1.....	Lamb	15.00
2 year, medium.....	Land	10.00
PUERARIA thunbergiana (Kudzu Vine)		
2 year, No. 1.....	Lane	12.00
2 year, medium.....	Lark	8.00
SMILAX lanceolata (Southern Smilax)		
2 year bulbs.....	Last	15.00
WISTERIA sinensis (Purple Wisteria)		
2 year, No. 1.....	Law	25.00
2 year, medium.....	Lax	17.50

DECIDUOUS SHRUBS

ALTHÆA—Bush Form		Cipher	Per 100
3 to 4 feet, well branched.....		Oar	\$25 00
2 to 3 feet, well branched.....		Oasis	17.50
18 to 24 inches, well branched.....		Oat	12.50
VARIETIES—			
Ardens—double violet			
Bicolor Hybrida—double white, purple center			
Compte de Hainault—double, pinkish white			
Duc de Brabant—double red			
Jeanne de Arc—double, pure white			
Lady Stanley—double, flesh pink			
Paeoniflorus—very double, rosy pink			
Purpurea—semi-plena—Double, purple			
Rubis—single red			
Single Precoce—single, flesh pink			
Snowdrift—single, white			
Souv. de Chas. Brenton—single, purple			
Totus Albus—single, white			
ALTHÆA—Tree Form			
4 to 5 feet, well branched.....		Oath	50.00
3 to 4 feet, well branched.....		Obey	40.00
2 to 3 feet, well branched.....		Object	30.00
VARIETIES—			
Duc de Brabant—double, red			
Paeonoeflora—very double, rosy pink			
Lady Stanley—double, flesh pink			
AMYGDALUS alba (White Flowering Almond)			
2 to 3 feet, well branched.....		Oblige	50.00
18 to 24 inches, well branched.....		Oblong	40.00
Rosea (Pink Flowering Almond)			
2 to 3 feet, well branched.....		Obscene	50.00
18 to 24 inches, well branched.....		Obscure	40.00
BERBERIS thunbergi (Japanese Barberry)			
24 to 30 inches, well branched.....		Observe	20.00
18 to 24 inches, well branched.....		Obsolete	15.00
15 to 18 inches, well branched.....		Obstruct	10.00
BUDDLEIA lindleyana (Lindley's Buddleia)			
2 years, well branched.....		Obtain	22.50
Davidi magnifica (Butterfly Bush)			
2 years, well branched.....		Obtrude	22.50
CALYCANTHUS floridus (Sweet Shrub)			
2 to 3 feet, well branched.....		Obtuse	30.00
18 to 24 inches, well branched.....		Obverse	25.00
CARYOPTERIS incana (Blue Spirea)			
24 to 30 inches, well branched.....		Occur	25.00
18 to 24 inches, well branched.....		Ocean	20.00
CORNUS florida (White Flowering Dogwood)			
5 to 6 feet, well branched.....		Octave	75.00
4 to 5 feet, well branched.....		Octopus	60.00
3 to 4 feet, well branched.....		Octuple	40.00
CYDONIA japonica (Japan Quince)			
2 to 3 feet, well branched.....		Ocular	35.00
18 to 24 inches, well branched.....		Oculist	25.00



SHRUBS, TWO YEAR. SPIREA A. W. IN FOREGROUND

DECIDUOUS SHRUBS—Continued

DEUTZIA crenata and Pride of Rochester	Cipher	Per 100
3 to 4 feet, well branched.....	Odd	\$20.00
2 to 3 feet, well branched.....	Oddity	15.00
18 to 24 inches, well branched.....	Ode	10.00
Gracilis (Dwarf White Deutzia)		
18 to 24 inches, well branched.....	Offal	35.00
15 to 18 inches, well branched.....	Offcast	25.00
12 to 18 inches, well branched.....	Offend	20.00
EXOCHORDA grandiflora (Pearl Bush)		
3 to 4 feet, well branched.....	Offer	40.00
2 to 3 feet, well branched.....	Offering	30.00
18 to 24 inches, well branched.....	Office	20.00
FORSYTHIA (Golden Bell)		
3 to 4 feet, well branched.....	Offset	20.00
2 to 3 feet, well branched.....	Offshoot	15.00
18 to 24 inches, well branched.....	Offshore	10.00
VARIETIES— Fortunei Intermedia Viridissima		
HYDRANGEA aborescens grandiflora (Hills of Snow)		
2 to 3 feet, well branched.....	Ogive	35.00
18 to 24 inches, well branched.....	Ogle	25.00
Paniculata grandiflora		
2 to 3 feet, well branched.....	Oil	35.00
18 to 24 inches, well branched.....	Oilstone	25.00
Quercifolia (Oak Leaved Hydrangea)		
18 to 24 inches, well branched.....	Old	50.00

DECIDUOUS SHRUBS—Continued

	Cipher	Per 100
HYPERICUM (Gold Flower)		
2 to 2½ feet, heavy.....	Omlet	\$35.00
18 to 24 inches, well branched.....	Omen	25.00
12 to 18 inches, branched.....	Omit	20.00
VARIETIES—		
Moserianum and Patulum henryi		
JASMINUM nudiflorum (Naked flowering Jasmine)		
2 to 3 feet, well branched.....	Onyx	25.00
18 to 24 inches, well branched.....	Ooze	20.00
Humile (Evergreen—Everblooming Jasmine)		
2 to 3 feet, well branched.....	Opake	30.00
18 to 24 inches, well branched.....	Opal	25.00
KERRIA japonica, single flower		
2 to 3 feet, well branched.....	Opera	40.00
18 to 24 inches, well branched.....	Operate	30.00
LAGERSTROEMIA indica (Crape Myrtle)		
3 to 4 feet, well branched.....	Opine	40.00
2 to 3 feet, well branched.....	Opinion	30.00
18 to 24 inches, well branched.....	Opium	20.00
VARIETIES—		
Red	Pink	White
LONICERA fragrantissima (Bush Honeysuckle)		
3 to 4 feet, well branched.....	Oppose	25.00
2 to 3 feet, well branched.....	Oppress	20.00
18 to 24 inches, well branched.....	Optic	15.00
Bella albida		
3 to 4 feet, well branched.....	Oracle	20.00
2 to 3 feet, well branched.....	Oral	15.00
18 to 24 inches, well branched.....	Orang	10.00
Grandiflora rosea		
3 to 4 feet, well branched.....	Orator	20.00
2 to 3 feet, well branched.....	Oratory	15.00
18 to 24 inches, well branched.....	Orbed	10.00
Morrowi		
3 to 4 feet, well branched.....	Ordain	25.00
2 to 3 feet, well branched.....	Ordeal	18.00
18 to 24 inches, well branched.....	Order	12.00
Tatarica alba and rosea		
2 to 3 feet, well branched.....	Ore	15.00
18 to 24 inches, well branched.....	Organ	10.00
PHILADELPHUS coronarius and grandiflorus		
3 to 4 feet, well branched.....	Organic	20.00
2 to 3 feet, well branched.....	Oriel	15.00
18 to 24 inches, well branched.....	Orient	10.00
Coronarius lewisi (Gordonianus)		
2 to 3 feet, well branched.....	Orlop	20.00
18 to 24 inches, well branched.....	Ornate	15.00
RHODOTYPOS kerrioides (White Kerria)		
2 to 3 feet, well branched.....	Osier	30.00
18 to 24 inches, well branched.....	Ossa	25.00
RHUS aromatica (Aromatica Sumac)		
2 to 3 feet, well branched.....	Ostrich	30.00
18 to 24 inches, well branched.....	Ounce	25.00

DECIDUOUS SHRUBS—Continued

	Cipher	Per 100
SPIRÆA anthony waterer (Dwarf Crimson Spiræa)		
18 to 24 inches, well branched.....	Out	\$25.00
15 to 18 inches, well branched.....	Outbid	20.00
12 to 15 inches, well branched.....	Outcast	15.00
Arguta		
2 to 3 feet, very heavy.....	Outcrop	25.00
18 to 24 inches, well branched.....	Outery	20.00
12 to 18 inches, branched.....	Outdo	15.00
Callosa alba		
18 to 24 inches, well branched.....	Outfly	25.00
15 to 18 inches, well branched.....	Outgo	20.00
12 to 15 inches, well branched.....	Outing	15.00
Callosa Rosea		
3 to 4 feet, well branched.....	Outlast	25.00
2 to 3 feet, well branched.....	Outlaw	20.00
18 to 24 inches, well branched.....	Outlay	15.00
Frunifolia flora plena		
3 to 4 feet, well branched.....	Outleap	35.00
2 to 3 feet, well branched.....	Outlet	22.50
18 to 24 inches, well branched.....	Outline	20.00
Reevesiana flora plena		
3 to 4 feet, well branched.....	Outlive	25.00
2 to 3 feet, well branched.....	Outlook	17.50
18 to 24 inches, well branched.....	Output	12.50
Thunbergi		
2 to 2½ feet, well branched.....	Outsail	30.00
18 to 24 inches, well branched.....	Outset	25.00
12 to 18 inches, well branched.....	Outside	17.50
Van Houtte		
4 to 5 feet, well branched.....	Oval	25.00
3 to 4 feet, well branched.....	Oven	17.50
2 to 3 feet, well branched.....	Overall	12.50
18 to 24 inches, well branched.....	Overbid	8.00
12 to 18 inches, well branched.....	Overcast	5.00
1 year, field grown, transplanting grade.....	Overcoat	2.50
SYMPHORICARPOS racemosus (Snowberry)		
2 to 3 feet, well branched.....	Overhead	20.00
18 to 24 inches, well branched.....	Overlap	15.00
Vulgaris (Coralberry)		
2 to 3 feet, well branched.....	Overleap	15.00
18 to 24 inches, well branched.....	Overload	10.00
VIBURNUM tomentosum plicatum (Japan Snowball)		
2 to 3 feet, well branched.....	Overt	40.00
18 to 24 inches, well branched.....	Overtax	30.00
VITEX agnus castus (Chaste Tree)		
3 to 4 feet, well branched.....	Ovine	25.00
2 to 3 feet, well branched.....	Ovule	20.00
WEIGELA eva rathke		
2 to 3 feet, well branched.....	Owl	40.00
18 to 24 inches, well branched.....	Owlet	30.00
Hendersonia and rosea		
3 to 4 feet, well branched.....	Owner	30.00
2 to 3 feet, well branched.....	Ox	25.00
18 to 24 inches, well branched.....	Oxeye	17.50
Variegata (Variegated leaved Weigela)		
2 to 3 feet, well branched.....	Oyer	40.00
18 to 24 inches, well branched.....	Oyster	30.00

CONIFEROUS EVERGREENS

The Coniferous Evergreens listed below are well filled plants and have been transplanted two or more times, which assures good root systems and fine ball. Prices include BALLING and BURLAPPING.

BIOTA compacta (Compact Green Arborvitae)	Cipher	Per 10
24 to 30 inches.....	Cab	\$25.00
18 to 24 inches.....	Cabin	20.00
Orientalis (Oriental Arborvitae)		
5 to 6 feet, specimen plants.....	Cable	35.00
4 to 5 feet, specimen plants.....	Cactus	25.00
3 to 4 feet, well filled symmetrical plants.....	Cadet	15.00
2 to 3 feet, well filled symmetrical plants.....	Cage	10.00
18 to 24 inches, shapely plants.....	Cake	7.50
Orientalis compacta (Compact Chinese Arborvitae)		
30 to 36 inches, compact, well formed plants.....	Calico	30.00
24 to 30 inches, compact, well formed plants.....	Calix	22.50
18 to 24 inches, compact, well formed plants.....	Call	17.50
JUNIPERUS communis (Common or English Juniper)		
3 to 4 feet, sheared specimens.....	Callus	15.00
2 to 3 feet, sheared specimens.....	Calm	10.00
18 to 24 inches, sheared specimens.....	Cameo	7.50
Communis depressa (Prostrate Juniper)		
30 to 36 inches, spread.....	Camp	42.50
24 to 30 inches, spread.....	Campus	30.00
18 to 24 inches, spread.....	Canal	22.50
15 to 18 inches, spread.....	Cancel	15.00
Communis depressa aurea (Golden Prostrate Juniper)		
24 to 30 inches, spread.....	Candid	35.00
18 to 24 inches, spread.....	Candle	25.00
15 to 18 inches, spread.....	Cane	20.00
Communis hibernica (Irish Juniper)		
5 to 6 feet, specimen plants.....	Canine	25.00
4 to 5 feet, specimen plants.....	Canker	20.00
3 to 4 feet, specimen plants.....	Cannon	12.50
2 to 3 feet, shapely plants.....	Canopy	10.00
18 to 24 inches, shapely plants.....	Canter	7.50
Chinensis stricta		
18 to 24 inches, shapely plants.....	Cape	22.50
15 to 18 inches, shapely plants.....	Capital	17.50
Sabina		
18 to 24 inches, well formed plants.....	Caple	15.00
15 to 18 inches, well formed plants.....	Capote	12.50
THUJA occidentalis (American Arborvitae)		
5 to 6 feet, specimen plants.....	Caprice	50.00
4 to 5 feet, specimen plants.....	Capsize	35.00
3 to 4 feet, well formed plants.....	Captain	25.00
2 to 3 feet, well formed plants.....	Captive	17.50
18 to 24 inches, nice plants.....	Captor	10.00

CONIFEROUS EVERGREENS—Continued

		Per 10	Per 100
THUJA occidentalis globosa (Globe Arborvitae)	Cipher	\$15.00	\$.....
18 to 24 inches, well formed plants.....	Capture	12.50
15 to 18 inches, well formed plants.....	Car	10.00
12 to 15 inches, well formed plants.....	Carat		
Occidentalis Hoveyi (Hovey's Arborvitae)			
18 to 24 inches, well formed plants.....	Carbide	15.00
15 to 18 inches, well formed plants.....	Carbine	12.50
12 to 15 inches, well formed plants.....	Carbon	10.00
Occidentalis pyramidalis (Pyramidal Arborvitae)			
2 to 3 feet, well formed.....	Carpus	15.00
18 to 24 inches, well formed.....	Carp	12.50
Occidentalis wareana (Siberian Arborvitae)			
18 to 24 inches.....	Carrott	10.00
12 to 18 inches.....	Cart	8.00
TSUGA canadensis (Canadian Hemlock)			
3 to 4 feet, compact and well formed.....	Case	30.00
2 to 3 feet, compact and well formed.....	Cask	22.50
18 to 24 inches, compact and well formed.....	Cast	17.50

BROAD LEAVED EVERGREENS

ABELIA grandiflora			
3 to 4 feet, very heavy plants.....	Chaff	6.50	60.00
2 to 3 feet, well branched.....	Chain	4.50	40.00
18 to 24 inches, well branched.....	Chair	3.00	25.00
12 to 18 inches, well branched.....	Chaise	2.00	15.00
CRATAEGUS lalandi (Laland's Evergreen Thorn)			
4 to 5 feet, well branched, B. & B.....	Chalk	20.00	175.00
3 to 4 feet, well branched, B. & B.....	Chance	16.50	150.00
2 to 3 feet, well branched, B. & B.....	Channel	12.50	100.00
18 to 24 inches, well branched, B. & B.....	Chant	8.50	75.00
ELAEAGNUS pungens (Thorny Elaeagnus)			
24 to 30 inches, well branched, B. & B.....	Chap	25.00	225.00
18 to 24 inches, well branched, B. & B.....	Chapter	20.00	175.00
ELAEAGNUS reflex (Bronze Elaeagnus)			
30 to 36 inches, well branched, B. & B.....	Chart	25.00	225.00
24 to 30 inches, well branched, B. & B.....	Charter	20.00	175.00
18 to 24 inches, well branched, B. & B.....	Chary	15.00	125.00
EUONYMUS carrieri (Carrier's Euonymus)			
24 to 30 inches, heavily branched.....	Chat	5.00	45.00
18 to 24 inches, well branched.....	Chaunt	4.00	35.00
12 to 18 inches, branched.....	Chaw	3.00	25.00
EUONYMUS japonica (Japanese Evergreen Euonymus)			
3 to 4 feet, heavily branched.....	Chay	15.00	125.00
2 to 3 feet, well branched.....	Cheap	10.00	90.00
18 to 24 inches, well branched.....	Check	7.50	65.00

BROAD LEAVED EVERGREENS—Continued

EUONYMUS japonica columnaris	Cipher	Per 10	Per 100
3½ to 4 feet, heavy specimens.....	Cheer	\$22.50	\$200.00
3 to 3½ feet, very compact.....	Cheese	20.00	175.00
30 to 36 inches, compact.....	Chef	17.50	150.00
24 to 30 inches, compact.....	Chemic	12.50	100.00
LIGUSTRUM japonicum (Japanese Evergreen Privet)			
5 to 6 feet, very heavy specimens, B. & B.....	Chick	17 50	150.00
4 to 5 feet, specimens, B. & B.....	Chickle	12.50	100.00
3 to 4 feet, well branched, B. & B.....	Chide	10.00	85.00
2 to 3 feet, well branched, B. & B.....	Chief	7.50	60.00
Lucidum (Wax Leaved Privet)			
30 to 36 inches, heavy, B. & B.....	Chill	22.50	200.00
24 to 30 inches, well branched, B. & B.....	Chime	17.50	150.00
18 to 24 inches, well branched, B. & B.....	Chink	15.00	125.00
Nepalense (Nepaul's Privet)			
30 to 36 inches, heavy, B. & B.....	Chip	20.00	150.00
24 to 30 inches, well branched, B. & B.....	Chirp	15.00	125.00
18 to 24 inches, well branched, B. & B.....	Choice	12.50	100.00
PRUNUS caroliniana (Cherry Laurel)			
5 to 6 feet, well branched.....	Chop	30.00	250.00
4 to 5 feet, well branched.....	Chick	25.00	200.00
3 to 4 feet, well branched.....	Churl	20.00	150.00
2 to 3 feet, well branched.....	Churn	15.00	125.00
18 to 24 inches, well branched.....	Chyme	10.00	85.00

ORNAMENTAL TREES

AMYGDALUS persica (Double Flowering Peach)			
5 to 6 feet, well branched.....	Ideal	7.00	65.00
4 to 5 feet, well branched.....	Idiom	6.00	55.00
3 to 4 feet, well branched.....	Idle	4.50	40.00
2 to 3 feet, well branched.....	Idler	3.50	30.00
VARIETIES—			
Double White	Double Pink	Double Red	
CERCIS canadensis (Red Bud)			
5 to 6 feet, well branched.....	Ignite	7.50	60.00
4 to 5 feet, well branched.....	Ignore	5.00	45.00
3 to 4 feet, well branched.....	Image	4.00	30.00
MELIA azedarach umbraculiformis (Texas Umbrella Tree)			
4 to 5 feet.....	Immerge	5.00	40.00
3 to 4 feet.....	Immerse	4.00	35.00
PRUNUS pissardi (Purple Leaf Plum)			
4 to 5 feet, well branched.....	Impart	6.00	50.00
3 to 4 feet, well branched.....	Impeach	5.00	40.00
ULMUS americana (American Elm)			
2½ to 3 inches, well branched.....	Impede	30.00	250.00
2 to 2½ inches, well branched.....	Impel	20.00	175.00
1¾ to 2 inches, well branched.....	Impend	15.00	125.00
1½ to 1¾ inches, well branched.....	Imperil	12.50	100.00
1 to 1½ inches, well branched.....	Implant	10.00	90.00
8 to 10 feet, well branched.....	Implicit	6.50	60.00

ROSES

Field Grown—Budded and on Own Roots

(H.P.) Hybrid perpetual; (H.W.) Hybrid Wichuriana; (H.C.) Hardy Climbing; (C.T.) Climbing Tea and Ramblers. No. 1 graded 3 or more branches 24 to 30 inches in length; No. 1½ graded 2 and 3 branches 18 to 24 inches in length.

(H.R.) Hybrid Rugosa, Rugosa; (T.) Tea, (H.T.) Hybrid Tea. No. 1 graded 3 or more branches 18 to 24 inches in length; No. 1½ graded 2 and 3 branches 12 to 18 inches in length.

(P.) Polyantha, No. 1 graded 3 or more branches 12 to 18 inches in length; No. 1½ graded 2 and 3 branches 10 to 15 inches in length. (B.) Budded. (O.R.) Own Roots.

We price the Number One grade only, but can furnish Number 1½ (medium) grade at 30 per cent and Number 2 grades at 50 per cent off the price of Number 1.

	No. 1, Per 100
Alexander Hill Gray—T., Deep Lemon Yellow, large, full. O.R. and B.	\$35.00
Alfred Colomb—H.P., Carmine—Crimson, large, full. B.	30.00
American Pillar—C.P. Large, rich rosy pink, vigorous. O.R.	20.00
Anne de Diesbach—H.P. Carmine; large double flowers. B.	30.00
Baby Rambler (Crimson)—Pol. B.	35.00
Baby Tausendschoen. P. Pink shading to white. O.R.	35.00
Bessie Brown—H.T. Large, white flushed with pink. O.R. and B.	35.00
Bess Lovett—H.W. Double, clear, bright red. O.R.	25.00
Bride—T. Large; pure white. O.R.	35.00
Bridesmaid—T. Clear shiny pink; profuse bloomer. O.R.	35.00
Climbing American Beauty—H.T.W. Rich Red passing to crimson. O.R. B.	25.00
Climbing Clothilde Soupert—H. Pol. Very double, white shaded to pink. B.	30.00
Climbing Gruss an Teplitz—C.H.T. Vivid fiery crimson. B.	30.00
Conrad F. Meyer—H.R. Pure silvery pink. B.	30.00
Coquette de Alps—H.P. Large; pure white. B.	30.00
Crested Moss—Deep Pink. B.	30.00
Crimson Rambler—Rich crimson. O.R.	25.00
Dorothy Perkins—H.W. Bright pink. O.R.	20.00
Double Laviegata—Double white Cherokee. O.R.	30.00
Dr. W. Van Fleet—H.W. Delicate flesh pink; full, double. O.R.	25.00
Earl of Dufferin—H.P. Rich Crimson. B.	30.00
Etoile de France—H.T. Crimson. O.R.	35.00
Etoile de Lyon—T. Deep golden yellow. O.R.	35.00
Excelsa—H.W. (Red Dorothy Perkins). O.R.	20.00
Frau Karl Druschki—H.P. Pure white; extra fine. B.	30.00
Gardenia—H.W. Bright yellow bud; cream flower. O.R.	20.00
General Jacqueminot—H.P. Bright red. B.	30.00
General McArthur—H.T. Vivid crimson—scarlet. O.R.	35.00
George Dickson—H.P. Velvety black crimson. B.	30.00
Gruss an Teplitz—H.T. Bright crimson. B.	35.00
Hadley—H.T. Deep rich, velvety crimson. O.R.	35.00
Heinrich Munch—H.P. Soft pink; very large (Pink Druschki). B.	30.00
Henri Martin—Moss. Light, clear red. B.	30.00
Hiawatha—H.W. Glowing, ruby red. O.R.	25.00
His Majesty—H.P. Dark Crimson (Crimson Druschki). B.	30.00
Jonkheer J. L. Mock—H.T. Clear Pink; large. O.R. and B.	35.00
K. A. Victoria—H.T. Pure white. O.R. and B.	35.00
Lady Hillingdon—T. Deep Apricot or orange. O.R.	35.00
La France—H.T. Silvery rose. O.R.	35.00

ROSES—Continued

	No. 1, Per 100
Laurent Carle—H.T. Brilliant, velvety carmine. O.R.	\$35.00
Madame Butterfly—H.T. Pink with Apricot and gold. O.R.	35.00
Madame Caroline Testout—H.T. Brilliant, satiny-rose. B.	35.00
Madam Gabriel Luizet—H.P. Pink; fragrant. B.	30.00
Madam Plantier—H.P. Pure white. O.R.	25.00
Magna Charta—H.P. Extra large, bright rich pink. B.	30.00
M. P. Wilder—H.P. Deep, rich, glowing red. B.	30.00
New Century—H.R. Beautiful rosy-pink. O.R. and B.	30.00
Ophelia—H.T. Salmon flesh. O.R.	35.00
Paul Neyron—H.P. Large; bright pink. B.	30.00
Paul's Scarlet Climber—W. Vivid scarlet crimson. B.	25.00
Pink Maman Cochet—T. Rich rosy pink; fragrant. O.R. and B.	35.00
President Taft—H.T. Shell Pink; beautiful form. O.R.	35.00
Prince Camille de Rohan—H.P. Dark velvety crimson. B.	30.00
Queen of Prairie—H.C. Red. O.R.	30.00
Radiance—H.T. Brilliant rosy-pink; large. O.R. and B.	35.00
Red Radiance—H.T. Clear red; free bloomer. B.	35.00
Rhea Reid—Rich, dark velvety red; large. O.R.	35.00
Salet Moss—Rose pink; very large; full. B.	30.00
Silver Moon—H.W. Clear, silvery-white; large. O.R.	25.00
Sir Thomas Lipton—H.R. Beautiful, double white. O.R. and B.	30.00
Tausendschoen—C.P. Flushed white to deep pink. O.R.	20.00
Ulrich Brunner—H.P. Bright cherry-red. B.	30.00
White Bath—Moss. Pure white. B.	30.00
White Dorothy Perkins—W. Double, pure white. O.R.	20.00
White Maman Cochet—T. Very large; waxy-white; pink flush. O.R. and B.	35.00
William R. Smith—T. Creamy-white. O.R. and B.	35.00



BUDED ROSES

