

Historic, archived document

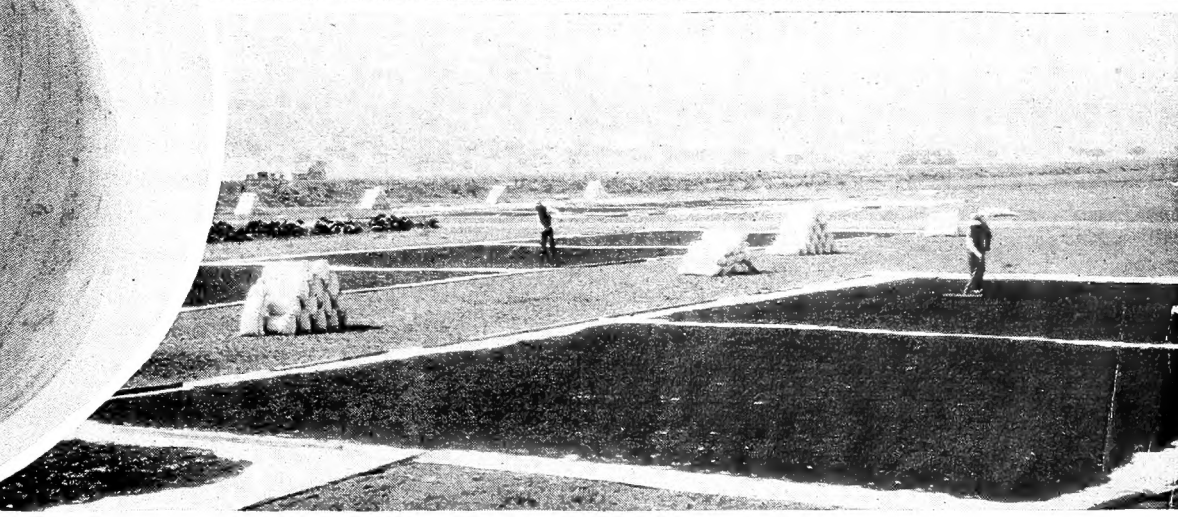
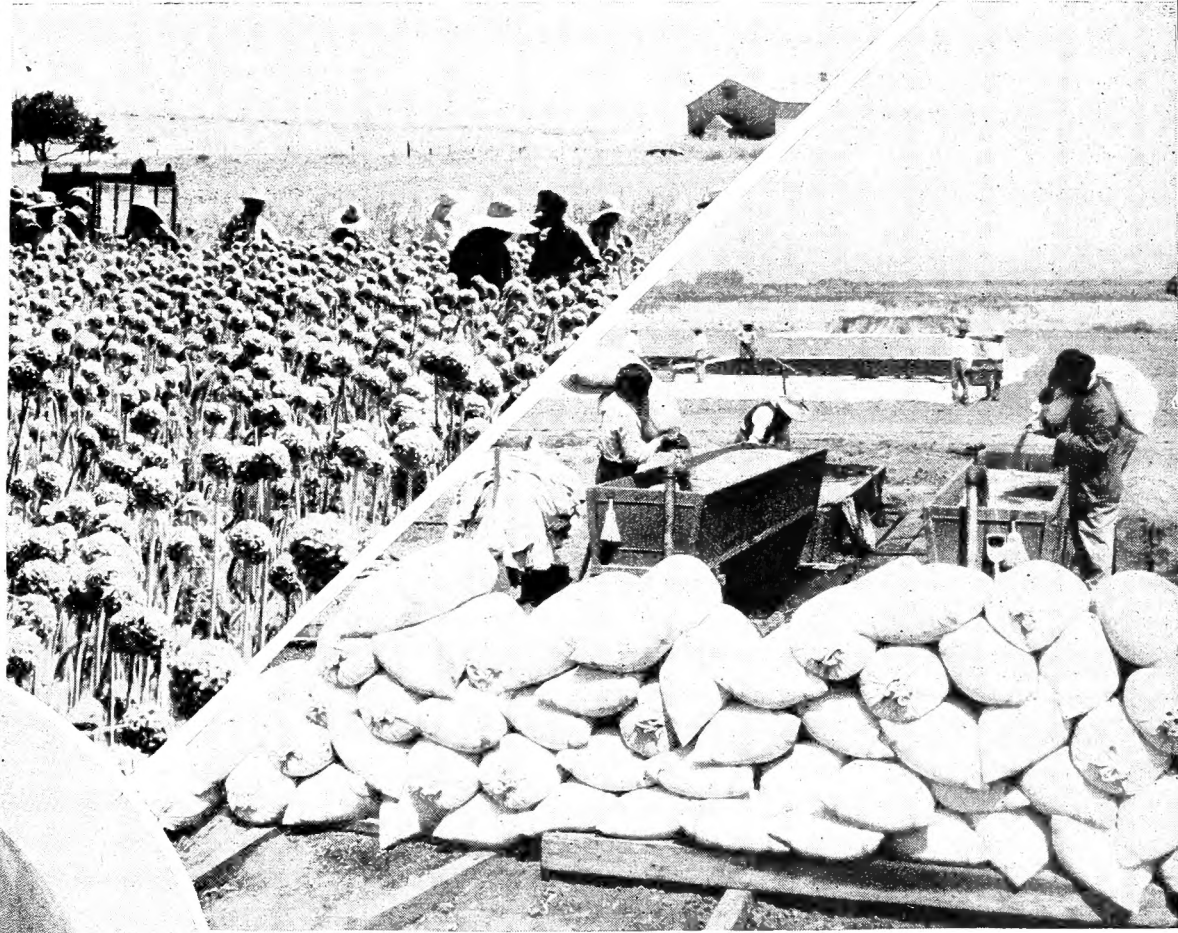
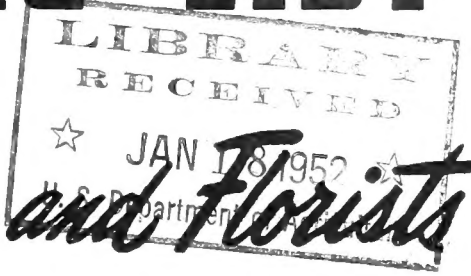
Do not assume content reflects current scientific knowledge, policies, or practices.

62,61

WHOLESALE PRICE LIST

TESTED SEEDS FOR
1952

Market Growers and Florists



Our Famous ESPANOLA ONION See Page 3

PETER HENDERSON, STUMPP & WALTER CO.

48 CORTLANDT ST., NEW YORK 7, N. Y.

Peter Henderson, Stumpp & Walter Co.

TESTED SEEDS *for* MARKET GROWERS and FLORISTS 1952

We pay the transportation charges in the United States by Parcel Post, Express or Freight, **at our option**, on all Seeds except where otherwise noted.

ALL GOODS IN THIS CATALOG are offered subject to being unsold on receipt of order, and the **prices quoted are subject to change without notice.**

All advance orders for growing crops, are booked by us previous to harvesting and receipt—subject to crops permitting—and accidents or delays beyond our control. Should shortages necessitate it, we reserve the right to fill such orders pro rata.

THE PRICES QUOTED CANCEL ALL PRICE LISTS PREVIOUSLY ISSUED. The prices are net.

ACCOUNTS—We would be pleased to open charge accounts for the convenience of our customers. Kindly furnish references.

REMITTANCES should be made by Money Order, Bank Draft or Registered Letter. We must decline sending goods C. O. D. unless 25% of their value accompanies the order. **If cash or stamps are sent by mail REGISTER THE LETTER.**

WE MAKE NO CHARGE FOR SHIPPING AND CARTING of goods to any railroad station, steamship line or express office in New York City proper.

WE MAKE NO CHARGE FOR PACKING, boxes, cases or barrels. Cloth bags we charge for, viz.: 1 peck, 20c; 1/2 bushel, 30c; 1 bushel, 35c; 2 bushels, 90c; Burlap bags, 1 peck, 20c; 1/2 bushel, 30c; 1 bushel, 40c; 2 bushels, 45c; 4 bushels, 50c; 6 bushels, 60c; 8 bushels, 80c. No charge for bags with lawn grass mixtures. **Special packing of seeds for foreign shipments**, when necessary, in tin-lined cases or double sacks we charge for at cost.

WE GUARANTEE THE SAFE ARRIVAL in the United States of all goods purchased from us.

Peter Henderson, Stumpp & Walter Co. warrants to the extent of the purchase price that seeds or bulbs sold are as described on the container within recognized tolerances. Seller gives no other or further Warranty, express or implied.

PLANTING GUIDE FOR VEGETABLES

	SEED REQUIRED			SPACING		NUMBER OF PLANTS PER ACRE	
	For Plants	For 100 ft. of Row	For an Acre	Distance	Distance	Spaced	No. Plants
				Between Plants	Between Rows		
Artichoke	1 oz. to 500	1/4 oz.	6 oz.	18 to 24 in.	36 to 48 in.	12x1 in.	522,720
Asparagus	1 oz. to 800	1 oz.	4 lbs.	3 to 6 in.	12 to 24 in.	12x3 in.	174,240
Asparagus Roots	—	50 to 125	3600 to 11,500	9 to 24 in.	36 to 60 in.	12x12 in.	43,560
Beans, Bush	—	1 lb.	60 lbs.	2 to 4 in.	24 to 36 in.	15x1 in.	418,176
Beans, Pole	—	1 lb.	30 lbs.	6 to 8 in.	36 to 48 in.	18x1 in.	348,480
Beets	—	1 oz.	8 to 15 lbs.	1 to 4 in.	15 to 24 in.	18x3 in.	116,160
Broccoli	1 oz. to 2000	1/4 oz.	4 to 6 oz.	18 to 24 in.	24 to 40 in.	18x12 in.	29,040
Brussels Sprouts	1 oz. to 2000	1/4 oz.	4 to 6 oz.	18 to 24 in.	18 to 36 in.	18x18 in.	19,360
Cabbage	1 oz. to 2000	1/4 oz.	4 to 6 oz.	12 to 24 in.	24 to 36 in.	20x1 in.	313,635
Cardoon	—	1/2 oz.	4 oz.	18 to 30 in.	18 to 30 in.	20x20 in.	15,681
Carrot	—	1 oz.	3 to 5 lbs.	1 to 3 in.	18 to 24 in.	24x18 in.	15,520
Cauliflower	1 oz. to 2000	1/4 oz.	4 to 6 oz.	18 to 24 in.	24 to 36 in.	24x24 in.	10,890
Celery	1 oz. to 8000	1/8 oz.	4 oz.	4 to 8 in.	20 to 48 in.	30x6 in.	34,848
Chicory	—	1/2 oz.	4 lbs.	2 to 4 in.	18 to 36 in.	30x12 in.	17,424
Collards	1 oz. to 2000	1/4 oz.	4 oz.	12 to 24 in.	18 to 36 in.	30x16 in.	13,068
Corn Sweet	—	1/2 lb.	12 lbs.	4 to 6 in.	30 to 48 in.	30x20 in.	10,454
Corn Salad	—	2 oz.	10 lbs.	2 to 4 in.	12 to 18 in.	30x24 in.	8,712
Cress	—	1 oz.	10 lbs.	2 to 4 in.	12 to 18 in.	30x30 in.	6,970
Cucumber	—	1 oz. to 60 hills 2 oz. to 100 ft. row	2 lbs. in hills 3 to 4 lbs. in rows	1 to 3 ft.	3 to 6 ft.	30x30 in.	6,970
Dandelion	—	1/2 oz.	5 lbs.	6 to 12 in.	18 to 24 in.	36x12 in.	14,446
Dill	—	1/2 oz.	5 lbs.	4 to 8 in.	18 to 36 in.	42x12 in.	6,223
Egg Plant	1 oz. to 2000	—	1/2 lb.	18 to 24 in.	24 to 36 in.	42x24 in.	4,148
Endive	—	1 oz.	4 lbs.	8 to 12 in.	18 to 24 in.	48x12 in.	10,890
Kale	1 oz. to 2000	1/2 oz.	2 to 3 lbs.	18 to 24 in.	24 to 36 in.	48x18 in.	7,790
Kohl Rabi	—	1/2 oz.	4 lbs.	3 to 6 in.	12 to 24 in.	48x24 in.	5,445
Leek	—	1/2 oz.	4 lbs.	2 to 4 in.	12 to 24 in.	48x30 in.	4,356
Lettuce	1 oz. to 3000	1/2 oz.	3 lbs.	4 to 14 in.	12 to 18 in.	48x36 in.	3,630
Melon, Musk	—	1 oz. to 50 hills	2 to 3 lbs.	2 to 3 ft.	6 to 8 ft.	48x48 in.	2,723
Melon, Water	—	4 oz. to 100 hills	3 to 4 lbs.	2 to 3 ft.	6 to 8 ft.	60x36 in.	2,901
Mustard	—	1/2 oz.	5 lbs.	4 to 8 in.	12 to 24 in.	60x48 in.	2,178
Okra	—	2 oz.	8 lbs.	18 to 24 in.	24 to 36 in.	60x60 in.	1,743
Onion	—	1 oz.	5 to 6 lbs.	2 to 4 in.	18 to 30 in.	8x8 ft.	680
Onion (For Sets)	—	—	40 to 80 lbs.	Not Thinned	12 to 24 in.	10x6 ft.	726
Parsnip	—	1/2 to 1 oz.	3 lbs.	3 to 4 in.	18 to 24 in.	10x10 ft.	435
Parsley	—	1/2 oz.	3 lbs.	4 to 8 in.	12 to 18 in.	12x5 ft.	736
Peas	—	2 lbs.	112 to 224 lbs.	1 to 3 in.	24 to 36 in.	12x12 ft.	302
Pepper	1 oz. to 1000	1/8 oz.	1/2 lb.	15 to 18 in.	18 to 30 in.	Approximate Number of Feet of Row per Acre at the following row spacing	
Pumpkin	—	1/2 lb. to 100 hills	3 to 4 lbs.	3 to 4 ft.	8 to 12 ft.	Space between rows	Feet of row
Radish	—	1 oz.	10 to 12 lbs.	1 in.	12 to 18 in.	18 in.	29,000
Rhubarb	—	1 oz.	3 lbs.	18 to 24 in.	24 to 48 in.	24 in.	21,760
Ruta Baga	—	1/2 oz.	2 to 4 lbs.	6 to 8 in.	18 to 24 in.	30 in.	17,430
Salsify	—	1 oz.	8 lbs.	2 to 4 in.	18 to 24 in.	36 in.	14,525
Sorrel	—	1 oz.	5 lbs.	2 to 4 in.	12 to 24 in.	42 in.	12,440
Spinach	—	1 oz.	10 to 12 lbs. in rows 20 to 25 lbs. broadcast	3 to 6 in.	12 to 18 in.	48 in.	10,850
Squash, Summer	—	1/4 lb. to 100 hills	4 to 5 lbs.	3 to 4 ft.	3 to 4 ft.		
Squash, Winter	—	1/2 lb. to 100 hills	3 to 4 lbs.	5 to 6 ft.	6 to 9 ft.		
Tomato	1 oz. to 2000	—	4 oz.	2 to 6 ft.	3 to 7 ft.		
Turnip	—	1 oz.	1 to 2 lbs.	3 to 4 in.	12 to 24 in.		

Special Announcement

To Our Market Grower Customers

During the past year the two nationally known Metropolitan seed firms of Peter Henderson & Co. and Stumpp & Walter Co. formed a consolidation in order to better serve the gardeners of America. As a result of this consolidation, numerous savings in operation will be effected which will redound to the advantage of our customers.

It will at all times, as in the past, be our first consideration to furnish our customers with the highest quality strains of seed, consistent with the lowest possible prices.

VEGETABLE SEEDS

1952 INTRODUCTIONS OF GREAT MERIT

All of the varieties listed in this catalog were bred and selected with one object in mind, and that is to produce profitable crops for the commercial grower. Our offerings include the most desirable types for the long distance shipper, as well as those that appeal primarily to the local market trade. Whether your market is far or near, our seeds produce the crops that bring good returns.

BUSH BEAN, WADE, A.A.S. Gold Medal Winner 1952. Top Quality—Heavy Yields—Smooth Appearance. This variety is resistant to common bean mosaic and powdery mildew. It has a deep green pod, 5½ to 6 inches long, round, slender, with reddish brown seed. It grows taller than Tendergreen, previous Gold Medal winner, holds its pods well up off the ground, and is a top quality bean with very heavy yields. It is ranked tops in marketability. It has a very smooth appearance, desirable for processing as well as for market or home use. It is classed as a slow-wilting type, losing water content slower than the average variety. Lb. **75c**; 15 Lbs. **\$7.50**; 100 Lbs. **\$45.00**.

CARROT, IMPERIDA. A New Bunching Carrot Developed at Parma Branch of the Idaho Agricultural Experiment Station. Under southwestern Idaho growing conditions on irrigated land of good fertility, Imperida reaches suitable bunching size in 95 to 100 days, at which time its short, strong tops reach an average of 12 to 15 inches in length. Imperator grown in the same fields under the same conditions has tops averaging 20 to 24 inches. The roots of Imperida are slightly longer than those of Imperator. For example, in trials where the average length of Imperator was 7¼ inches, the average for Imperida was 8 inches. Imperida roots are long-conical in shape, with predominately square shoulders. As a shipping variety, its short tops will tend to eliminate the difficulties frequently encountered in the commercial packing of Imperator types which have been produced on soils of high fertility. For this reason, and because of the high quality of its roots, Imperida will probably find ready acceptance wherever the Imperator variety is now used as a shipping carrot. Oz. **50c**; ¼ Lb. **\$1.25**; Lb. **\$3.35**; 10 Lb. **\$33.00**.

CUCUMBER, NIAGARA. This important new mosaic resistant variety was bred by Dr. H. M. Munger of Cornell. It stands up well in seasons when other varieties have been ruined by mosaic. This excellent slicer has fruits of good length, smooth, almost without taper, round-ended and well colored. Oz. **50c**; ¼ Lb. **\$1.50**; Lb. **\$4.00**; 10 Lbs. **\$39.50**.

CUCUMBER, SURECROP HYBRID, A.A.S. Bronze Medal Winner, Early—Heavy Yielder—Resistant to Downy Mildew and Mosaic. This attractive white slicer holds its dark green color well after picking. Fruits 8 to 9 inches in length by 2½ inches in diameter. Slender and blunt ended. The flesh is crisp, tender and unusually good flavor. The fruits are very uniform in size and color. Surecrop bears over a long season and it makes a profitable local market seller. Season 58 days. ½ Oz. **\$2.00**; Oz. **\$3.75**; ¼ Lb. **\$11.50**; Lb. **\$35.00**.

MUSKMELON, GOLDEN DELIGHT, A.A.S. Bronze Medal Winner. Larger—More Attractive Than Bender's Surprise. The fruits are elongated, 4 to 5 by 5 to 7 inches with thick salmon or orange flesh which is firmer than most melons in this class. The flavor and general quality is superior to Pride of Wisconsin or Pride of Colorado. The fruits are also larger and somewhat earlier in maturing than those varieties. The skin color is slate gray, turning to a fairly deep yellow at maturity. The ribs are wide and shallow with open netting, and the shape is somewhat tapering at the blossom end. Season 92 days. Oz. **70c**; ¼ Lb. **\$2.00**; Lb. **\$6.25**; 10 Lbs. **\$61.50**.

ONION ESPANOLA, YELLOW SWEET SPANISH (Utah Strain). The handsomest and mildest large onion in the world. Colorado, Oregon, Utah, wherever the market wants a large Spanish Onion, then the demand is for our Utah Strain. Our rapidly expanding sales in such territories offers most satisfying proof that we have the best onion for the soil, the climate and the market. This Utah Strain was developed from the original Spanish stock, and in addition to being well adapted to American conditions, it has better keeping qualities, and it is an excellent shipper. The bulbs are very large, globular in shape with an attractive amber-orange skin. The flesh is white, firm and solid. Season 105 days. Oz. **90c**; ¼ Lb. **\$2.65**; Lb. **\$6.75**; 10 Lbs. **\$65.00**.

OUR FRONT COVER shows a few field scenes of the production of seed of our famous Espanola Onion. 1. Note the vigorous growth and uniform seed heads; 2. Harvesting the seed; 3. Seed being processed for drying; 4. Seed is dried by the brilliant sunshine. 5. Note the perfect symmetry of the finished onion.

**MUSK MELON
GOLDEN DELIGHT**



BUSH BEAN WADE

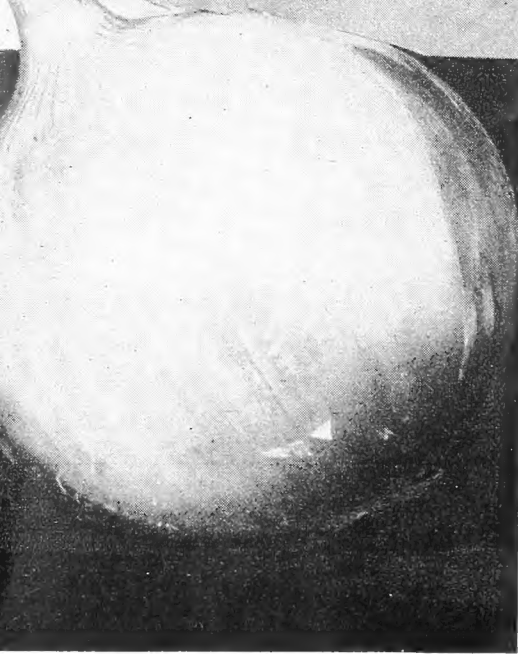


**Left, CARROT IMPERIDA
Right, CARROT IMPERATOR**



VEGETABLE SEEDS

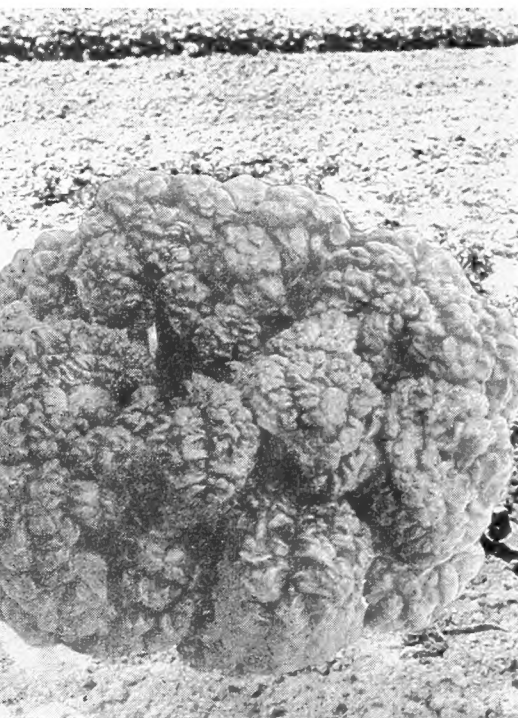
1952 INTRODUCTIONS OF GREAT MERIT



HYBRID ONION

ONION, HYBRID ASGROW Y-40, Heavy Yields Earlier with Greater Uniformity. Hybrid vigor when applied to onions means added earliness, hardiness, and greater uniformity with heavier yields. Asgrow Y-40 is an early, mild, sweet onion of globular shape with a tan-yellow skin and firm white flesh. Season 90 days. Oz. **\$1.85**; ¼ Lb. **\$5.00**; Lb. **\$15.00**.

PEPPER, VINEDALE, A.A.S. Bronze Medal Winner 1952. This new variety matures a few days later than Harris Early. It is slightly larger than that well-known variety, smoother and thicker walled. The very attractive fruits measure about 4 by 2 inches with blunt ends and very thick walls for such an early variety. The plants are dwarf in habit and good croppers. Oz. **\$2.75**; ¼Lb. **\$8.00**; Lb. **\$24.00**.



AMERICAN SPINACH

SPINACH, AMERICA. Bloomsdale Extra Longstanding Dark Green. A.A.S. Silver Medal Winner for 1952. SPINACH AMERICA is a cross between Bloomsdale Longstanding Darkgreen and our Viking. Plant height 6-8 inches, plant width 10-12 inches. Very thick-leaved, real glossy darkgreen, very well savoyed. The longest standing, heaviest yielding Spinach of them all, which at time of full maturity still has an excellent flavor. SPINACH AMERICA takes about 50 days to reach cutting stage and gives optimum production about 62 days after seeding. It has stood 75 days (after seeding date) without objectionable bolting, giving the vegetable grower a long harvesting season of large plants. ALL IN ALL SPINACH AMERICA (Bloomsdale Extra Longstanding, Darkgreen) IS THE BEST LONGSTANDING, HEAT RESISTING, HEAVY YIELDING, SAVOY-LEAVED SPINACH ON THE MARKET AT PRESENT. Lb. **75c**; 10 Lb. **\$6.50**; 25 Lb. **\$15.75**; 100 Lb. **\$60.00**.

TOMATO, QUEENS. A New Early Market Variety by the Originator of RUTGERS. Early-Smooth—Deep Globe—Reasonably Free from Cracks. Developed by Professor Lyman G. Schermerhorn of the New Jersey Agricultural Experiment Station, Queens is the outcome of a cross between Valiant and Rutgers. This final product is a variety combining earliness, smooth fruits with a deep globe shape, and reasonably free from cracks. The foliage is intermediate between the small foliage of Valiant and the heavy foliage of Rutgers with a uniformity of productiveness and type of plant. In season "Queens" will ripen the peak of its crop about one week later than the peak picking of Valiant and at least a week or ten days earlier than Rutgers. One characteristic of "Queens" is the firmness of the fruit whether picked on the blush or red ripe, which should make it carry well in the containers and attract the attention of the consumers on the roadside stand or in the retail store. The fruits are medium in size, deep globe in shape, measuring 2.41 inches on the vertical diameter and 2.59 on the horizontal diameter. The average weight of the fruits is 4.95 ounces. The fruit has a thick outer wall and inner walls, with small seed cavities that may account for the hard, firm feel of the fruits. The flavor of the fruit is very pleasing and it is suggested as an early market variety for staking or natural culture. ½ Oz. **\$1.50**; Oz. **\$2.50**; ¼ Lb. **\$7.00**; Lb. **\$20.00**.



TOMATO, HYBRID EARLY SENSATION. First Fruits Set 60 Days After Plant Setting. This new hybrid has not only earliness to commend it; it is also a heavy cropper and the fruits are of good uniform size. The fruits weigh 4 to 5 ounces each, and are carried in clusters of 4 or more. They are deep globe in shape and bright rich scarlet in color. Pkt. (100 seeds) **\$1.00**; ⅛ Oz. **\$4.75**; ¼ Oz. **\$8.75**; ½ Oz. **\$17.00**; Oz. **\$32.00**.

WATERMELON, NEW HAMPSHIRE MIDGET, A.A.S. Gold Medal Winner. This New Watermelon Is No Bigger Than a Cantaloupe. New Hampshire Midget has made a hit on many local markets. At the New York Stork Club it created a sensation when halved and served like grapefruit. The fruits are oval in shape and measure about 6 inches across. They weigh about 2½ lbs. The rind is light green with irregular stripings and very thin. The flesh is bright red, solid and sweet. The seeds are jet black. The plants are very productive and yield a melon on almost every six inches of vine. Two hundred melons from every one hundred foot of vine is not unusual. The fruits mature in 65 days, thus making this variety ideal for Northern Planting. They can be shipped if handled in muskmelon crates. Oz. **70c**; ¼ Lb. **\$1.85**; Lb. **\$5.00**.

QUEEN'S TOMATO

Photo Courtesy of
Prof. Lyman G. Schermerhorn,
Rutgers University

Superior Strains of Vegetable Seeds For Progressive Market Growers

All of the varieties listed in this catalog were bred and selected with one object in mind, and that is to produce profitable crops for the commercial grower. Our offerings include the most desirable types for the long distance shipper, as well as those that appeal primarily to the local market trade. Whether your market is far or near, our seeds produce the crops that bring good returns.

ASPARAGUS	Oz.	½ Lb.	Lb.
Giant Washington, Seed.....	.25	.75	2.00

BEANS	Lb.	15 Lbs.	100 Lbs.
-------	-----	---------	----------

Green Podded Bush

Topcrop. Topcrop Snapbean is a variety for the market gardener, shipper and processor. It is immune to common bean mosaic, and to "greasy pod" or "shiny pod," a virus disease. Wide and thorough tests during the past few years indicate adaptability to most parts of the country, and it has the vigor to develop plants of good size under adverse weather conditions. In comparative tests, Topcrop is earlier than Tendergreen and Supergreen. High yields are borne during a short interval, giving a few large pickings rather than a number of small pickings. Because of its mosaic resistance, it has consistently outyielded the commercial varieties of the same general class, such as Tendergreen, Longgreen, Full Measure, and others. The pods of Topcrop are 5½ to 6 inches long, 7/16 inches wide and round; they are slender when young, fairly large when older.....

Contender. (Buff Valentine) Contender is resistant to common bean mosaic and has shown considerable resistance to powdery mildew. It shows possibilities for market gardeners and shippers and seems to be well adapted to a wide range of climatic conditions, **possessing heat tolerance that may well establish it as an excellent variety for summer and fall plantings where present standard varieties some times do not set pods well.** One to two days earlier than Black Valentine Stringless, maturing in 52 days. Plant: Intermediate height giving a somewhat spreading appearance 15 to 16 inches tall. Pods: Slightly longer than Black Valentine Stringless although thicker and heavier and almost round in the young market stage. They are stringless with less fibre than Black Valentine Stringless, therefore showing more tendency to curve.....

Topcrop.....	.60	6.50	36.00
Tendergreen.....	.60	6.00	33.00
Bountiful.....	.55	5.50	31.00
Longgreen.....	.60	6.50	35.00
Plentiful.....	.60	6.00	32.50
Supergreen.....	.60	6.50	35.00
Stringless Black Valentine.....	.55	5.50	31.00
Streamliner.....	.60	6.50	35.00
French Horticultural.....	.70	7.00	41.00
Refugee Stringless.....	.60	6.00	32.50
Full Measure.....	.60	6.00	33.00

Wax Podded Bush

Golden Age Wax.....	.70	7.00	40.00
Pencil Pod Black Wax.....	.55	5.75	32.50
Unrivald Wax.....	.55	5.75	32.50
Surecrop Stringless Wax.....	.55	5.75	32.50

Pole, Green Podded

Kentucky Wonder (Old Homestead).....	.60	6.00	32.00
St. Louis Perfection.....	.70	6.75	37.50

Fava

Mammoth Long-Pod (Aquadulce Strain) A specially Imported Stock.....	.65	6.75	38.00
--	-----	------	-------

Bush Lima

Triumph. Recommended for canning and freezing and wherever a high quality green baby lima is desired.....	.55	5.50	31.00
Fordhook U. S. No. 242.....	.55	5.50	30.00
Fordhook.....	.55	5.50	30.00
Early Giant.....	.55	5.50	30.00
Henderson "Baby Lima".....	.50	5.00	28.00
Improved Henderson.....	.55	5.50	29.00

Pole Limas

Empire State. Greater productivity of pods per plant, with mostly six beans to the pod.....	.70	7.00	40.00
Early Leviathan.....	.60	6.00	32.00

BEETS

	Oz.	¼ Lb.	Lb.	10 Lbs.
Improved Wonder. An improved Early Wonder Beet which was given a gold medal rating by the All-American Selection Committee. Has all the fine qualities of its type but has, in addition, a fine, darker-colored flesh, exceptionally tender and sweet.....	.60	.65	1.80	17.50
Crosby's Egyptian Special.....	.25	.60	1.65	16.00
Detroit Dark Red.....	.25	.65	1.70	16.50
Perfected Detroit (Large Top).....	.25	.65	1.70	16.50
Early Wonder.....	.25	.60	1.65	16.00
Perfected Early Wonder (Large Top).....	.25	.65	1.70	16.50
Green Top Wonder.....	.25	.65	1.70	16.50
Extra Early Egyptian.....	.25	.65	1.70	16.50

SWISH CHARD

Fordhook Giant.....	.20	.45	1.35	13.00
Green Plume.....	.20	.45	1.35	13.00
Lucullus.....	.20	.45	1.35	13.00

BROCCOLI

Earlgreen Sprouting. Very early—season 65 days.....	1.75	5.00	15.00
Riviera. An improved strain of the Italian Green Sprouting. Season 75 days.....	1.50	4.00	12.00
Calabrese.....	.75	2.00	5.50

BRUSSELS SPROUTS

Long Island.....	4.00		
Catskill.....	2.75	8.00	25.00

CABBAGE

Yellow Resistant Varieties

Resistant Premier (Extra Early).....	.80	2.25	6.50
Resistant Golden Acre (Extra Early).....	.75	2.00	6.00
Resistant Copenhagen Market.....	.75	2.00	6.00
Marion Market (Second Early).....	.70	1.85	5.00
Resistant Globe—Crop Failure			
Bugner Winter (Late).....	.90	2.50	6.75
Wisconsin Hollander No. 8 (Late).....	.70	2.00	5.75

Extra-Early Standard Varieties

Charleston Wakefield.....	.40	1.20	3.25
Copenhagen Market.....	.65	1.75	4.85
Early Jersey Wakefield.....	.50	1.35	3.75
Early Market.....	.70	2.00	5.25
Golden Acre.....	.65	1.75	4.85

Round Head No. 18. This variety is being grown in the Charleston, S. C. district in place of Charleston Wakefield. The plants are small and compact; stem short; head almost ball shaped, 7 to 8 inches in diameter, weight 3 to 4 pounds.....

Second Early Standard Varieties

Bonanza. Can be held in the field for two to three weeks without loss of market condition. You can thus harvest when the market is strong. The explanation is that it makes a small firm head early in the season and continues to grow until its maximum size of four pounds or more is reached. This variety has shown wide adaptability and it can be strongly recommended for the South, particularly for the spring crop where small firm heads are needed for the Northern market. Season 74 days.....	1.50	4.25	12.50
Glory of Enkhuizen.....	.50	1.50	4.00
Succession.....	.55	1.60	4.25

Late or Main Crop Varieties

Danish Ballhead Short Stem.....	.70	2.00	5.85
Late Flat Dutch.....	.55	1.60	4.25
Penn State Ballhead.....	.75	2.00	6.00

Savoy

American Drumhead.....	.70	1.85	5.00
------------------------	-----	------	------

Red Varieties

Mammoth Rock Red.....	.70	2.00	5.25
Red Acre.....	.80	2.25	6.50

Chinese Cabbage

Chi-Hi-Li.....	.40	.85	2.50
----------------	-----	-----	------

CARROT

	Oz.	¼ Lb.	1 Lb.	10 Lbs.
California Bunching30	.85	2.25	22.00
Chantenay30	.85	2.30	22.50
Chantenay Long Type.....	.30	.85	2.30	22.50
Coreless35	1.15	2.95	29.00
Danvers Half Long.....	.30	.85	2.30	22.50
Nantes Half Long.....	.40	1.00	2.85	28.00
Hutchinson35	.90	2.70	26.50
Imperator30	.80	2.25	22.00
Pride of Denmark.....	.30	.80	2.35	23.00
Red Core Chantenay.....	.30	.85	2.30	22.50
Supreme Half Long.....	.30	.85	2.50	24.50
Touchon35	1.15	2.95	29.00
Tendersweet40	1.15	3.15	30.00

CAULIFLOWER

	½ Oz.	Oz.	¼ Lb.	1 Lb.
Snowball	2.00	3.50	12.50	36.50
Primosnow	2.75	5.00	15.50	45.00
Improved Holland Erfurt.....	2.50	4.50	14.75	43.50
Super Snowball	2.50	4.50	14.75	43.50
Early Snowwhite (Special No. 25).....	2.50	4.50	14.75	43.50

CELERY

	¼ Oz.	½ Oz.	Oz.	¼ Lb.	Lb.
Golden Treasure. Has much of the characteristics of our Golden Plume, from which it is a selection. It is larger than Golden Plume in every dimension. Longer and larger first joint, greater height and a full heart of beautiful, golden color. Excellent for both early and late.	1.25	2.00	3.00	10.00	30.00

Summer Pascal, **Special Strain.** This is a green Celery that is short and heavy, growing to a maximum height of 22 inches. Not as tall as Utah and California Pascals. Has a very full, golden heart. Only the extreme outside stems show ribs; they are taken off for market and it leaves a heavy full-hearted stalk, entirely free of strings. These smooth stems are very brittle. Short first joint and great size. Resembles our Golden Plume in shape. Grows slower than golden types; takes two weeks under boards or paper to bleach. Retains green cast after much bleaching. Also bleached by hilling but not left as long as the old Giant Pascal. Is grown from first crop in spring to late fall crop.

Golden Plume (Special Strain).....			2.00	5.50	16.00
Cornell No. 19.....			2.25	6.50	19.50
Golden Self Blanching (Tall Strain)			2.25	6.50	20.00
Supreme Golden			2.25	6.50	19.50
Easy Blanching			1.25	4.00	12.00
Prizeheart			2.25	6.50	19.50
Summer Pascal			2.25	6.50	19.50
Utah			1.25	4.00	12.00
Giant Pascal			1.00	3.25	9.50

CELERAIC

Snowball			1.00	3.00	8.50
Large Smooth Prague.....			1.00	3.00	8.50

CHERVIL

Curled45	1.25	3.00
--------------	--	--	-----	------	------

CHICORY

Large Rooted or Coffee Chicory....			.40	1.10	3.25
Whitloof or French Endive.....			.70	1.85	5.00

COLLARDS

Georgia15	.40	1.10
---------------	--	--	-----	-----	------

CORN SALAD

Large Leaved40	1.25	4.00
--------------------	--	--	-----	------	------

CRESS

Extra Curled40	1.25	4.00
Upland50	1.50	
Water Cress			2.00	6.00	

CORN, SWEET

	1 Lb.	12 Lbs.	100 Lbs.
--	-------	---------	----------

Hybrid Varieties

lochief. A.A.S. Gold Medal 1950. lochief has both quality and yield to recommend it. Yields have been reported heavier than loana or Golden Cross Bantam. The ears are 9 to 10 inches long, 16 or 18 rowed with exceptionally deep grains of excellent flavor and tenderness. The color is deep yellow. The plants are heavy-wind resistant and relatively resistant to heat and drought. Season 85 days.....

Calumet. Very uniform in maturing, high yielding, suitable for mechanical harvesting.60	6.00	50.00
Sunlite60	6.00	45.00
Marcross C13 x C6.....	.55	5.75	42.50
Carmelcross C13 x C30.....	.55	5.75	42.50
Golden Cross Bantam.....	.55	5.50	41.00
Cream-O-Gold60	6.00	46.50
loana55	5.50	41.00
Hybrid Evergreen55	5.75	42.50

Open-Pollinated Varieties

Golden Bantam40	3.50	25.75
Country Gentleman45	3.75	26.00
Stowell's Evergreen40	3.50	24.75

CUCUMBER

	Oz.	¼ Lb.	1 Lb.	10 Lbs.	100 Lbs.
--	-----	-------	-------	---------	----------

Santee. The New Cucumber that tops Palmetto in some areas. Tested under the number S.C. 3 in the Southern Cooperative Cucumber tests of 1949, Santee's accumulative score was easily first when the cooperators were asked to rate the three best varieties for commercial production in their area. Santee was rated as having the same good quality, fruit size, length and general shape as Cubit. Its fruit color and shape as well as vine vigor was reported as slightly better than Cubit. It carries moderate resistance to both downy mildew and angular leaf spot. Season 60 days.....

Palmetto45	1.25	3.50	34.50	340.00
Marketer35	.95	2.75	27.00	265.00
A. & C.30	.90	2.50	24.50	240.00
Cubit35	1.00	2.85	28.00	
Colorado30	.90	2.50	24.50	240.00
Longfellow35	1.00	3.00	29.50	
National Pickling30	.80	2.20	21.50	
Straight Eight35	.95	2.75	27.00	265.00
The Henderson "Stays Green".....	.30	.75	2.20	21.50	210.00

DANDELION

Improved Thick Leaved.....	1.25	3.50	10.00	
Italian (Ciccoria Catalogna).....	.70	2.00	6.00	

DILL

Mammoth15	.40	1.10	9.50
---------------	-----	-----	------	------

EGG PLANT

Black Beauty	1.00	2.75	8.00	79.50
Fort Myers Market.....	1.00	2.75	8.00	79.50
Florida High Bush.....	1.00	2.75	8.00	79.50
Manatee Special	1.00	2.75	8.00	79.50

ENDIVE

Deep Heart Fringed.....	.30	.80	2.30	22.50
Batavian Full Hearted.....	.30	.80	2.25	22.00
Broad Leaved Batavian (Escarolle)	.30	.80	2.25	22.00
Golden Heart Curled.....	.35	1.00	2.95	29.00
Green Curled25	.75	2.15	21.00
Green Curled Rose Ribbed.....	.30	.80	2.25	22.00
FLORENCE FENNEL35	1.00	2.75	

KALE

Dwarf Curled or Blue Scotch.....	.25	.80	2.25	22.00
Dwarf Green Curled Scotch.....	.25	.80	2.25	22.00
Siberian25	.70	1.90	18.50

KOHL RABI

Short Leaved Early White Vienna....	.50	1.25	3.50	
-------------------------------------	-----	------	------	--

LEEK

American Flag70	2.00	5.50	
Musselburgh75	2.10	5.57	

LETTUCE

	Oz.	¼ Lb.	1 Lb.	10 Lbs.
Great Lakes	.70	2.00	5.50	53.50
Imperial (Cornell) No. 456	.70	2.00	5.50	53.50
Progress	.70	2.25	5.50	53.50
New York	.35	1.15	3.40	32.50
New York No. 12	.35	1.15	3.40	32.50
New York No. 515	.35	1.15	3.40	32.50
Imperial 44	.40	1.25	3.85	36.50
Imperial 84	.40	1.25	3.95	37.50
Pennlake	.70	2.00	6.00	57.50
Big Boston	.30	.85	2.45	22.50
White Boston (Unrivald)	.30	.85	2.50	23.50
Super White Boston. A Larger and Improved Strain.	.40	.90	2.75	26.00
Mignonette	.50	1.50	4.00	
Slobolt	.50	1.50	4.50	43.50
Grand Rapids	.30	.80	2.35	21.50
Grand Rapids U. S. No. 1	.30	.90	2.50	23.50
Grand Rapids Tip Burn Resistant	.40	1.00	2.85	26.50
Grand Rapids Washington Strain (Ohio Grand Rapids)	.30	.90	2.50	23.50
Black Seeded Simpson	.25	.70	2.10	19.50
Trionon Cos	.30	.80	2.35	21.50
Paris White Cos	.30	.80	2.35	21.50
Giant White Cos	.40	.90	2.75	26.00

MUSK MELON

	Oz.	¼ Lb.	1 Lb.	10 Lbs.
Bender's Surprise	.40	1.10	3.25	31.50
Delicious	.40	1.15	3.25	31.50
Hale's Best	.35	.95	2.75	26.50
Hearts of Gold	.35	.95	2.75	26.50
Honey Rock	.35	.95	2.75	26.50
Iroquois	.45	1.25	3.75	36.50
Mildew Resistant No. 45	.40	1.10	3.25	31.50
Pride of Wisconsin	.35	.95	2.75	26.50
Schoon's Hard Shell (Early Benders)	.40	1.10	3.25	31.50
Rocky Ford	.35	.95	2.75	26.50

WATERMELON

Congo. The sensational Anthranose Resistant Shipping Variety. Fruits: Similar in size and shape to Garrison. Rind: Dark Green with darker green stripes, very tough. Flesh: Very bright red, medium grain, sweet, ripens well out to the rind. Seeds: White, with black tip and side markings. Hamlet, N. C., Sept. 7—J. M. Roscoe, watermelon grower near here, planted 15 acres of Congo type watermelons this year. He harvested more than 5,000, some weighing 55 lbs. each. Buyers took them as fast as he could pull them, paying him "good prices" he said, "right at the tract." Produce News 9/8/51.

	Oz.	¼ Lb.	1 Lb.	10 Lbs.
Florida Giant	.35	1.00	3.00	29.00
Stone Mountain	.20	.60	1.75	15.50
Cifron	.20	.60	1.75	15.50
Cole's Early	.20	.60	1.75	15.50
Tom Watson	.20	.60	1.75	15.50

MUSHROOM SPAWN

	Ctn.	10 Ctn.
Pure Culture Bottle Spawn (White)	1.35	12.50

MUSTARD

	Oz.	¼ Lb.	1 Lb.	10 Lbs.
Fordhook Fancy	.15	.45	1.25	12.00
Florida Broad Leaf	.15	.45	1.25	12.00
Giant Southern Curled	.15	.45	1.25	12.00
Mustard Spinach	.15	.45	1.25	12.00

OKRA

	Oz.	¼ Lb.	1 Lb.	10 Lbs.
Dwarf Prolific	.15	.45	1.25	11.50
Long Green	.15	.45	1.25	11.50
Clemson Spineless	.15	.45	1.25	11.50

ONION

	Oz.	¼ Lb.	1 Lb.	10 Lbs.
Espanola (Yellow Sweet Spanish), Utah Strain (See page 3)	.90	2.65	6.75	65.00
Jumbo Barcelona. A special strain of our Barcelona White Sweet Spanish that is preferred by our customers in Colorado, Idaho and Utah. The globular, glistening white bulbs grow to an enormous size. Season 120 days	.95	2.75	7.50	72.50
Barcelona	.90	2.65	6.75	65.00
Ebenezer	.50	1.50	4.25	40.00
Briham Yellow Globe	.55	1.65	4.50	42.50
Early Yellow Globe	.50	1.50	4.50	42.50
Yellow Globe Danvers	.75	2.00	5.50	53.50
Southport Red Globe	.75	2.00	5.50	52.50
Southport White Globe	.75	2.00	5.50	52.50
Southport Yellow Globe	.55	1.65	4.50	42.50
Hardy White Bunching	.60	1.75	5.00	47.50
White Bunch	.60	1.75	5.00	47.50
White Portugal	.50	1.50	4.50	42.50
White Lisbon	.80	1.75	5.00	47.50

PARSLEY

	Oz.	¼ Lb.	1 Lb.	10 Lbs.
Extra Double Curled	.25	.60	1.65	16.00
Emerald	.25	.60	1.65	16.00
Paramount	.20	.60	1.65	16.00
Plain	.25	.60	1.65	16.00
Hamburg	.25	.60	1.65	16.00

PARSNIP

	Oz.	¼ Lb.	1 Lb.	10 Lbs.
All American	.25	.75	1.75	17.00
Hollow Crown	.25	.70	1.60	15.50

PEAS

	1 Lb.	15 Lbs.	100 Lbs.
Early Delicious. An extra early variety of outstanding merit. The vines grow about 2 feet high and produce an enormous crop. The pods are 3 to 3¼ inches long, straight, pointed, dark green, and contain 7 to 8 deep green peas of good quality. In season Early Delicious is ready practically as soon as Alaska, and has the added advantage of being more productive, larger podded, and above all, of much higher quality. The seed is semi-smooth, or dimpled and for this reason can be planted earlier than is possible for the wrinkled varieties. Season 56 days	.55	5.25	29.50
Laxton's Progress	.50	4.75	25.50
Little Marvel	.50	5.00	27.25
Mammoth Podded Extra Early	.50	5.00	27.25
Prosperity or Gradus	.50	4.75	25.50
Thomas Laxton	.50	4.75	25.50
World's Record	.50	4.75	25.50
Giant's Stride	.50	5.50	27.25
Alderman	.50	4.50	24.00
Dwarf Alderman	.50	4.75	25.50
Telephone	.45	4.50	24.00

PEPPER

	Oz.	¼ Lb.	1 Lb.	10 Lbs.
California Wonder. Our strain is large fruited, thick walled and generally excellent for shipping or the local market	1.25	3.25	8.50	82.00
Early Wonder. About ten days earlier than California Wonder and more prolific. Fruits similar to California Wonder but slightly smaller	1.00	3.00	8.75	85.00
Florida Giant	1.25	3.25	8.50	82.00
World Beater	1.00	2.75	7.75	75.00
Ruby King	.85	2.50	7.50	72.00
King of the North	1.00	3.00	8.50	82.00
Windsor A	1.00	3.00	9.00	
Chinese Giant	1.00	3.00	9.00	
Golden California Wonder	1.50	4.50	12.50	
Pimiento	.90	2.75	8.00	77.00
Squash or Tomato Shape (also called Cheese and Sunnysbrook)	.90	2.75	8.00	77.00
Roumanian Wax	1.35	3.95	12.00	
Hungarian Wax (Hot)	.90	2.75	8.00	77.00
Long Red Cayenne (Hot)	.75	2.20	6.50	
Anaheim (Hot)	.90	2.75	8.00	

PUMPKIN

	Oz.	¼ Lb.	1 Lb.	10 Lbs.
Cheese (Special Strain)	.25	.65	1.75	16.50
Connecticut Field (Large Yellow "Big Tom")	.25	.65	1.75	16.50
Sugar (New England Pie)	.25	.65	1.75	16.50
Winter Luxury	.25	.65	1.75	16.50

RADISH

	Oz.	¼ Lb.	1 Lb.	10 Lbs.	25 Lbs.
Greenhouse Varieties					
Scarlet Globe Greenhouse Stock (Graded Seed)	.20	.50	1.30	12.50	29.50
Cavalier (Graded Seed)	.20	.50	1.30	12.50	29.50
Cherry-Belle	.20	.50	1.35	13.00	31.00
Icicle Greenhouse Stock	.20	.50	1.30	12.50	29.50
Standard Varieties					
Scarlet Globe.....100 Lbs. \$95.00	.20	.45	1.20	10.75	25.50
Sparkler	.20	.45	1.25	11.50	27.50
Crimson Giant	.20	.45	1.30	12.50	
White Tipped Scarlet Turnip	.20	.45	1.25	11.50	27.50
Icicle	.20	.45	1.25	11.50	27.50
Long White Vienna	.20	.45	1.30	12.50	29.50

RHUBARB

	Oz.	¼ Lb.	1 Lb.
St. Martins	.35	1.00	3.50

SALISFY

	Oz.	¼ Lb.	1 Lb.
Mammoth Sandwich Island	.75	2.00	5.25

SORREL

	Oz.	¼ Lb.	1 Lb.
Broad Leaved French	.75	2.00	5.75
Narrow Leaved	.75	2.00	6.00

SPINACH

	lb.	10 Lbs.	25 Lbs.	100Lbs.
Emerald Standing. A very large and vigorous type of compact, flat, spreading growth. Leaves are large, thick, slightly crumpled, very fleshy. Color is very dark green. Early and will stand longer than any other variety before bolting to seed. Of special value for sowing June 15th to August 1st.....	.65	5.75	12.50	47.50
New Long Standing Savoy-Leaved. The best long standing type of Bloomsdale Savoy.55	4.50	10.50	37.50
Summer Savoy. A proven long standing type with leaves slightly darker than New Long Standing....	.55	4.50	10.50	37.50
Bloomsdale Savoy Leaved. An excellent variety to sow for the late fall cutting.50	4.25	10.00	36.50
Blight Resistant Savoy. Excellent for early spring and late fall planting. Longer standing than Bloomsdale Savoy.55	4.50	10.50	37.50
Old Dominion Blight Resistant.....	.50	4.25	10.00	36.50
Virginia Blight Resistant.....	.55	4.50	10.50	37.50
Nobel Giant Leaved.....	.55	4.40	10.50	37.50
Thick Leaved. A hardy variety for fall sowing to winter over for spring cutting. Bright green smooth leaves.55	4.50	10.50	37.50
Viking55	4.50	10.50	37.50
Prickly Seeded Bloomsdale (Harlem Market)55	4.50	10.50	37.50
Princess Juliana55	4.75	11.50	38.00
Long Season. Plants small and compact with dark green crumpled leaves. Keeps prime condition in hot weather longer than any other variety.55	4.75	11.50	38.00
New Zealand20	.50	1.25	

SQUASH

Summer Varieties

	Oz.	¼ Lb.	Lb.	10 Lbs.	25 Lbs.
Early Prolific Straightneck. An outstanding stock for earliness, heavy yield and uniformity in size and shape. 100 Lbs. \$190.00	.30	.85	2.25	21.00	49.50
Yellow Summer Crookneck (Early Crookneck)30	.85	2.25	21.00	
White Bush Scalloped (Patty Pan or Cymling)30	.85	2.25	21.00	
Black Zucchini30	.85	2.50	23.50	
Cocozelle (Italian Vegetable Marrow)30	.85	2.35	22.00	
Unconn35	1.00	2.95	28.50	

Autumn and Winter Varieties

Acorn or Table Queen.....	.30	.85	2.35	22.00	
Royal Acorn. A large fruited variety30	.85	2.35	22.00	
Blue Hubbard35	1.00	2.95	28.00	
Buttercup45	1.30	3.75	36.00	
Butternut75	2.00	5.50	52.50	
Golden Hubbard35	1.00	2.75	26.00	
Delicata or Sweet Potato.....	.40	1.10	3.15	30.00	
Hubbard30	.90	2.55	24.00	
Large Warted Hubbard.....	.30	.90	2.55	24.00	

TOMATOES

	½ Oz.	Oz.	¼ Lb.	1 Lb.	10 Lbs.
Rutgers90	2.50	6.75	65.00	
Grothen's Red Globe.....	1.00	3.00	8.50	82.50	
Marglobe95	2.75	7.50	72.50	
Marglobe Special Strain	1.25	2.00	7.00	25.00	
Marglobe, Greenhouse Stock.....	3.50	6.00			
Improved Break O'Day.....	1.00	3.00	9.00		
Gulf State Market.....	1.25	3.50	10.00		
Pritchard or Scarlet Topper.....	.95	2.75	7.50		
Pritchard or Scarlet Topper Special Strain	1.25	2.00			
Stokesdale	1.00	2.75	7.75		
Bonny Best90	2.50	7.00		
Bonny Best, Super Strain	2.25	4.00			
Southland	1.25	3.50	10.00		
Indiana Baltimore90	2.50	6.75		
Michigan State Forcing.....	1.50	2.50	7.50		
Earliana95	2.75	8.00		
Valiant	1.25	3.50	9.75		
Wisconsin No. 55.....	1.25	3.50	10.00		
Sioux	1.35	4.00	12.00		
Improved Pearson	1.25	4.00	12.00		
Ponderosa	1.50	5.00	14.00		
Globe (Livingston's)	1.25	3.50	10.00		
Stone75	2.00	5.75		
Victor	1.00	3.00	9.00		
Richmeat	1.75	3.00	9.00	25.00	
Winsall	1.75	3.00	9.00	25.00	

Small Fruiting Varieties

Pomodoro or Large Red Plum.....	1.25	4.00	12.00		
Red Cherry	1.00				
Red Pear	1.00				
Yellow Plum	1.00				
Strawberry (Yellow Husk or Ground Cherry)	1.00				

TURNIP

	Oz.	¼ Lb.	1 Lb.	10 Lbs.	25 Lbs.
Purple Top White Globe	.15	.40	1.10		
100 Lb. \$103.00					
Early White Globe.....	.20	.50	1.40	13.50	
Pomeranian15	.40	1.20	11.50	
Golden Ball15	.45	1.20	11.50	
Yellow Globe15	.40	1.20	11.50	
Seven Top15	.40	1.20	11.50	

RUTA BAGA

Long Island Improved Purple Top	.15	.45	1.30	12.50	
Improved American Purple Top.....	.15	.45	1.30	12.50	
Laurentian20	.50	1.35	13.00	

HERBS

Basil, Sweet80	2.25	6.00		
Chives	1.75	5.50	14.00		
Marjoram, Sweet	1.25	3.50	9.50		
Sage	1.25	3.00	8.50		
Thyme, Broad Leaved.....	2.00	6.50	18.00		

LAWN GRASS SEED

FOR YOUR LANDSCAPE CONTRACTS AND STORE SALES

STAIGREEN

A modern lawn seed mixture, the result of years of experimenting and practical sowing in all types of soil. 10 Lbs. **\$14.00**, 25 Lbs. **\$33.50**, 100 Lbs. **\$125**. Less 20%.

SHADY PLACE

A companion mixture to staigreen but with an increased proportion of shade tolerant grasses. 10 Lbs. **\$14.00**, 25 Lbs. **\$33.50**, 100 Lbs. **\$125**. Less 20%.

GREENLAWN

A low priced, quick growing mixture in which we maintain high quality. 10 Lbs. **\$6.75**, 25 Lbs. **\$16.50**, 100 Lbs. **\$60.00**. Less 20%.

THE HENDERSON

This celebrated formula has been thoroughly tested by country wide use for more than a century and approved by many foremost gardeners. 10 Lbs. **\$11.50**, 25 Lbs. **\$27.50**, 100 Lbs. **\$100**. Less 20%.

GREENWOOD

Strictly a first class formula designed to fill a two-fold need (a) for the dealer who aims to supply quality goods at a low price (b) landscape man desiring a quick growing mixture. 10 Lbs. **\$9.25**, 25 Lbs. **\$21.50**, 100 Lbs. **\$80.00**. Less 20%.

FOR STORE SALES — WRITE FOR PRICES AND SPECIAL DEALER DISCOUNTS ON ATTRACTIVELY PACKAGED GRASS SEED IN 1 LB., 2½ LB., 5 LB. AND OTHER SIZES.

COMPLETE LIST ARRANGED IN ALPHABETICAL ORDER

Florists in every State in the Union find it profitable to grow our Tested Flower Seeds. The demand for high quality annual and perennial cut flowers including the old popular sorts as well as the novelties has increased the profits of Florists, by stimulating trade during the summer and autumn months.

	Trade Pkt.	1/4 Oz.	Oz.	1/4 Lb.		Trade Pkt.	1/8 Oz.	1/4 Oz.	Oz.	1/4 Lb.
ACHILLEA Ptarmica, The Pearl (Yarrow) P. 2 1/2 ft. Pure White.....	.35	1.25	4.00		ARABIS Alpina (Rock-Cress) P. 1 ft. White.35	1.25	4.00
ACONITUM Napellus (Monkshood) P. 4 to 5 ft. Deep Blue.....	.25	.60	2.00		ARCTOTIS Grandis (African Daisy) Splendid for cutting. Bluish White.....			.30	1.00	
ACONITUM Wilsoni. 5 ft. Light Blue	.50	1.75	6.00		ARCTOTIS Sawco Hybrids. 1 ft. Contains a fine selection of colors.....	.50	.85	1.50	5.00	
ACROCLINIUM Sensation, Double Hybrids—Mixed.30	1.00		ARMERIA Formosa Large-flowering Hybrids (Sea Pink) P. Bright colors.....	.25		.60	2.00	
AGERATUM Midget Blue. Grows 4 inches high with azure-blue flowers....	.50	1.50	5.00		ASPARAGUS plumosus nanus. True greenhouse-grown. 100 seeds 50c; 500 seeds \$2.00; 1000 seeds \$3.50; 2500 seeds \$8.00; 5000 seeds \$15.00.					
AGERATUM Fairy Pink. Grows 4 to 5 inches high. Soft salmon-rose.....	.50	2.00			ASPARAGUS Sprengeri. 100 seeds 50c; 500 seeds \$1.75; 1000 seeds \$3.00; 2500 seeds \$7.00; 5000 seeds \$12.50.					
AGERATUM Blue Perfection. Large heads of deep blue flowers.....	.25	.60	2.00		ASTERS—Wilt-Resistant					
ALYSSUM SWEET Violet Queen. Deep violet.35	1.25	4.00		Princess Type					
ALYSSUM SWEET Little Gem. Very dwarf and compact.....	.20	.60	2.00		Growing 2 to 2 1/2 ft. tall. Branching and free flowering; early blooming.					
ALYSSUM SWEET Benthami. Fragrant white flowers.15	.50	1.50		Annie. Peach-blossom.					
ALYSSUM SWEET White Carpet. Excellent for pot-work.....	.20	.60	2.00		Barbara. Orchid.					
ALYSSUM Saxatile compactum. P. Golden yellow.30	1.00	3.50		Bonnie. Soft salmon-rose.					
ANTIRRHINUM—Snapdragon					Golden Sheaf. Yellow self.					
Special Forcing Varieties					Linda. Pure rose.					
Ball's Yellow No. 1. Deep golden yellow..... 1/2 Trade Pkt. \$1.75	3.00				Mixed. Includes many new colors.					
Better Times (Windmill) American Beauty Red.....	2.00				Each of the above.....					
Christmas Cheer Light Rose Pink.....	2.00				Ball's White. Finest midseason white Aster, 4 inches in diameter and exquisite in form.....					
Hodaly's Ideal. A blend of carmine shading into rich orange and lavender, tipped with lemon-yellow.....	1.50				Heart of France. Largest dark red variety. The 2-foot plants are nicely branched and bear rich, deep ruby-red flowers on long, strong stems. Late blooming.					
Koster's White. Pure White.....	1.50				Queen of the Market. One of the most popular of all the early sorts. Grows 1 1/2 feet high and is of branching habit. White, Rose, Light Blue, Dark Blue, Crimson, Flesh-pink, Scarlet, Mixed. Each of the above....					
Lady Dorothy. Reddish bronze.....	3.00				Early Royal. An early-flowering form of our Late Branching Aster, having all the good qualities of the latter but coming into bloom in early August. White, Rose-Pink, Shell-Pink, Lavender, Purple, Scarlet, Mixed. Each of the above.....					
Margaret. Ivory-white, productive, midseason.	2.00				Improved Crego. The flowers are large, fluffy, and borne on long, stiff stems. Orchid, Crimson Deep Rose, Dark Blue, White, Shell-Pink, Azure-Blue. Mixed. Each of the above					
Maryland Pink (Winkler) Standard early pink..... 1/2 Trade Pkt. \$1.75	3.00				Early Giant Type					
Maryland White. Hybrid (Winkler) Midseason, pure white.....	3.00				Light Blue. The enormous light blue flowers, 5 inches across, are carried by long stems on branching plants 3 feet high.					
Standard Varieties					Peach Blossom. Strictly a cut-flower type, because the plant is non-branching, producing only 6 to 8 specimen flowers, but these are very large. The buds are almost white but flushes of light pink appear as they open.					
Afterglow. Large bronze.....	1.00				Rose Marie. A fine, rose-colored Aster for the florist, bright and rich in tone. Flowers are 4 to 5 inches across and have long florets with solid feathery centers; long stems. Each of the above 3.....					
America. Rose-pink with orange lip, blending into lemon.....	1.50				Late Branching. This is one of the most outstanding of all the late-blooming sorts. The flowers are of extraordinary size and stand erect on long, graceful stems, well above the foliage. Lavender, Sensation (Red), Purple, Pure White, Rose Pink, Crimson, Shell-Pink, Mixed. Each of the above.....					
Bertha Baur. Lavender-orchid.....	1.00				Trade Pkt. 1/8 Oz. 1/4 Oz. Oz. 1/4 Lb.					
Ethel. A large, bright yellow.....	1.50				.25 1.00 3.50 12.00					
Glorious. Brilliant bronze scarlet.....	1.00				.25 .50 1.75 6.00					
St. Louis Early Pink. Luminous silvery pink.	1.50				.25 .50 1.75 6.00					
Talisman. Bronze and golden shades	2.00				.25 .50 1.75 6.00					
Velvet Beauty. American Beauty red.	1.00				.25 .50 1.75 6.00					
Westover's Fringed White. Fine pure white, fringed flowers.....	1.00				.25 .50 1.75 6.00					
White Wonder Improved. Strong, wiry stems.	1.50				.25 .50 1.75 6.00					
New Rustproof Antirrhinums—Maximum or Super-Giant Type										
This type grows 3 feet high, with a base-branching habit.										
Alaska. Pure white.										
Apple Blossom. Light pink.										
Canary Bird. Canary-yellow.										
Copper King. Burnished copper.										
Copper Queen. Copper and old-gold.										
Crimson. Deep Crimson.										
Loveliness. Soft rose-pink.										
Swingtime. Pink florets tipped yellow; white throat.										
Yellow Giant. Deep yellow. mixed.										
Each of the above.....					.25 1.00 3.50					
Majus or Tall Type (2 1/2 ft.)										
Mixed25 .60 2.00					
Nanum Grandiflorum Type (1 1/2 ft.)										
Mixed25 .60 2.00					
AQUILEGIA—Columbine. P.										
Colossal. Outstanding mixture.					Trade Pkt. 1/8 Oz. 1/4 Oz. Oz. 1/4 Lb.					
Long-Spurred Hybrids. The plants are of strong, thrifty growth and are perfectly hardy. Blue Shades; Pink Shades; Scarlet Shades; Mixed Shades.....					.50 1.00 1.50 5.00					
Crimson Star. Blood-red, center petals white.50 2.00 3.50					
Longissima. Spurs often 4 inches long. Pure yellow.....					.50 2.00 3.50					

ASTERS—Wilt-Resistant (continued)

	Trade Pkt.	1/8 Oz.	1/4 Oz.	Oz.	1/4 Lb.
Beauty. This recently developed strain comes into bloom late in September and is at its best during October. The plants grow about 3 feet high, with large flowers borne on long, stiff stems.					
Azure-Blue, Deep Rose, Pure White, Flesh-Pink, Crimson, Purple, Mixed. Each of the above.....	.25		.60	2.00	7.00
Single Comet. The flowers are exceptionally large, often measuring 5 to 6 inches across, and the stems are of ideal length for cutting. Mixed.....			.25	.75	2.50
Giant California Sunshine (Non Wilt-Resistant) Plants grow 3 feet high and bear blossoms on long, stiff stems, admirable for cutting. Individual blooms are 4 to 6 inches in diameter. Mixed	.25		.75	2.50	
Hardy Perennial Asters— Michaelmas Daisies Alpinus speciosus. Large bluish purple flowers in May and June. Good rock-garden plant. 9 inches.....	.35	.75	1.25	4.00	
Alpinus Mixed. Contains all colors...	.25		.60	2.00	

BEGONIA—Fibrous-Rooted Type

	Trade Pkt.	1/8 Oz.	1/4 Oz.	Oz.	1/4 Lb.
Tall Varieties Christmas Cheer. This variety bears flowers of enormous size, attaining a diameter of 2 inches, the plants being covered with a mass of blooms throughout the entire season. The color is a beautiful shade of bright cherry-red. Christmas Pink. Same as above but color is a beautiful shade of bright pink. Each of the above, Trade Pkt. (about 1000 seeds) \$1.00; 1/64 Oz. (about 500 seeds) \$2.00; 1/32 Oz. \$3.50.					
Zahringer. The flowers are from 1 1/2 to 2 inches across, rose-pink shading to white in the center.....	1.00	2.00	3.50		
Coral Prize. Similar to Christmas Pink in habit but a deep coral-pink self.	1.00	2.00	3.50		
Ile De France. Identical to the above, but flowers are pure white.	1.00	2.00	3.50		
Intermediate Varieties Indian Maid. Deep blackish brown foliage and brilliant orange scarlet flowers about an inch in diameter..	1.00	2.00	3.50		
Luminosa. One of the most popular varieties. Dark fiery scarlet.....	1.00	3.00	5.50	10.00	
Dwarf Varieties Adeline. Very dwarf growing, with flowers of a pleasing shade of bright pink. Green foliage. King of the Reds. Glowing red flowers, green foliage. Each of the above	1.00	2.50	4.50	7.50	
Luminosa Compacta. Very dwarf and compact. Dark fiery scarlet; free flowering	1.00	3.00	5.50	10.00	
Pure White. In our estimation this is the best dwarf white for potting.	1.00	2.50	4.50	8.00	
	Trade Pkt.	3 Pkts.	1/4 Oz.	Oz.	1/64 Oz.

BELLIS. (English Daisy) Hardy Perennial Grant-Flowering. Pink; White; Mixed Each	.50		1.25	4.00	
Double Red Quilled.....	.50		2.00	7.50	
BRACHYCOME (Swan River Daisy) A. 1 1/2 ft. Mixed			.30	1.00	
BROWALLIA. Speciosa Major. Annual.	.50	1.25			
CALCEOLARIA. Giant-Flowering Mixed	1.00	2.50		3.50	
Multiflora Nana. Mixed.....	.75	2.00		3.50	
					1/32 Oz. \$6.00

CALENDULA—Pot Marigold

	1/4 Oz.	Oz.	1/4 Lb.
Apricot Beauty. A far better apricot Calendula than any heretofore seen. The attractive two-toned effect is more clearly pronounced.			
Cream Beauty. The creamy white shading to soft light yellow makes this the most delicately colored of all Calendulas.			
Lemon Beauty. Of the same ideal flower and plant characteristics as Persimmon Beauty, but of the purest lemon color.			
Persimmon Beauty. A true persimmon-orange of unusual brilliance and size.			
Mixed. A blend of the four varieties. Each of the above 5.....	.30	1.00	3.50

CALENDULA (Continued)

	1/4 Oz.	Oz.	1/4 Lb.
Cut Flower Mixture. A special mixture containing all colors and types, such as Chrysantha, Fantasy, Shaggy, etc. Campfire (Sensation). The color is brilliant orange with a scarlet sheen.	.30	1.00	3.50
Chrysantha. The flowers resemble chrysanthemums. Double, buttercup-yellow, a globular outline.....	.20	.75	2.50
Yellow Colossal. Double flowers 4 1/2 inches across. Clear, bright yellow. 1 1/2 ft.30	1.00	3.50
Orange King, Lemon King, Golden King, Double Art Shades. Each of above 4.....	.15	.50	1.75

CAMPANULA—Bellflower

	Trade Pkt.	1/4 Oz.	Oz.	1/4 Lb.	Lb.
Perennial Varieties—Used extensively as border plants. Tall varieties are excellent for cutting.					
Carpatica. Blue dwarf. 6 in.....		.25	.75		
Carpatica alba. White; dwarf. 6 in.		.25	.75		
Persicifolia grandiflora alba. White.	.25	.60	2.00		
Pyramidalis, Blue	.25	.50	1.75		
Pyramidalis, White	.15	.35	1.25		
Biennial Varieties Medium (Canterbury Bells). Will bloom the first year if sown early. Single White; Single Rose; Single Light Blue; Single Dark Blue; Single Mixed; Double Mixed. Each of the above.....		.30	1.00	3.50	
Calcanthema (Cup-and-Saucer Bells). White; Rose; Light Blue; Dark Blue; Mixed. Each of the above.....	.25	.60	2.00		
CERASTIUM tomentosum P. Small white flowers. Dwarf.....	.15	.30	1.00		
CHEIRANTHUS (Siberian Wallflower) Allioni. Gorgeous orange flowers. Excellent for rock garden.....		.15	.50	1.50	
CANDYTUFT—Iberis Giant Hyacinth-flowered. Immense spikes of pure white flowers.....		.25	.75	2.75	10.00
Mammoth-flowered Varieties (1 ft.) Flesh-Pink. Pale Pink. Lavender. Lilac-Lavender. Each of the above.....		.15	.50	1.75	6.00
Perennial Varieties Sempervirens. Pure white. 1 ft.....	.50	.75	2.50	8.50	
Gibraltarica. Lilac-white. 1 ft.....	.35	1.25	4.00		

CARNATIONS

Giant Double King. Annual. Flowers of fine form, coming 90 per cent double. Maroon King; Pink King; Red King; Rose King; White King; Yellow King; Mixed. Each of the above.....	.50	1.00	3.50		
Hardy Carnation. Dwarf Grenadin Scarlet. An ideal variety for basket work, growing 12 to 14 inches high, with double flowers of bright scarlet.....	.25	1.00	3.50	12.00	
CELOSIA Cristata (Crested Cockscomb). Mixed Colors.15	.35	1.25		
Plumosa (Feathered Cockscomb). Yellow; Crimson; and Mixed. Each.....		.35	1.25	4.00	
Thompsoni magnifica. Mixed. Pyramidal growth, feathery plumes in magnificent shades. 2 1/2 ft.....	.30	1.00	3.50		
Childsi (Chinese Woolflower) Mixed.....	.30	1.00	3.50		
Royal Velvet. Produces a large-centered crimson flower, surrounded by small clusters on basal branches. 2 ft.....	.25	.50	1.00		
Gilbert's Rose Beauty. Grows 3 to 4 feet high, non-branching unless pinched when less than 12 inches high. Strong stems. Flowers are ball shaped, measuring 8 to 14 inches across. The color is a bright pink or rose on a silver base and runs 90 per cent or more true to type.....	.50				
Gilbert's Maple Gold. Round maple-pink heads when quite small. Each ruffled segment tipped with brilliant gold.50				
Gilbert's Green Gold. Color is a combination of delightful shade of green and gold.50				

CENTAUREA

Cyanus (Cornflower) Annual Improved Double Strain; Black Boy, Blue Boy; Pinkie; Red Boy; Snow Man; Mixed. Each	.15	.50	1.50	5.00	
Jubilee Gem. A dwarf variety making a compact plant literally covered with flowers of vivid dark blue. 1 ft.....	.30	1.00	3.50		
Imperialis. (Giant Sweet Sultan) Annual Grows 2 feet high. Mixed.....	.35	1.25	4.00		
Gymnocarpa (Dusty Miller) Treat as Annual. Leaves fern-like.....	.20	.75	2.50		
Montana. (Perennial Cornflower) Violet-blue flowers. 2 ft.....	.15	.50	1.75		

CHRYSANTHEMUM Annual Varieties		Trade Pkt.	1/4 Oz.	Oz.	1/4 Lb.	Lb.
Single Mixed.			.25	.75	2.50	
Double Mixed.			.25	.75	2.50	
Perennial Varieties (Shasta Daisies)						
Giant Double White. Blooms average 5 in. in diameter, on long, wiry, stems. 3 Pkts. \$1.25; 1/8 Oz. \$2.00		.50	3.50			
Alaska. Pure white, 5 inches across.			.30	1.00	3.50	
Dwarf Avalanche. Dwarf; large flowers.		.25	.50	1.50		

CINERARIA		Trade Pkt.	1/64 Oz.	1/32 Oz.	1/16 Oz.	1/8 Oz.
Cremer's Prize Strain Improved. The flowers are large and the color range exceptionally fine.		1.50	2.50	4.00	7.50	13.50
California Super Giants, Mixed. Flowers exceed 5 inches in diameter, with petals 1 to 1 1/2 inches wide. Includes all shades. 3 Pkts. \$2.50		1.00		3.00	5.00	9.00
Multiflora Nana. Potsdam. Mixed. An extra choice strain.		1.00	2.50	4.00	7.00	
CLARKIA, Double. Mixed. All colors.			.25	.75		
CLEOME, Pink Queen. Annual. 3 feet. The color is a bright salmon-pink.		.25	.50	1.50		
COBAEA scandens. (Cup-and-Saucer Vine). Annual. Purple flowers.			.35	1.25		
COLEUS. Rainbow Hybrids. 1/32 Oz. \$1.75; 1/16 Oz. \$3.25; 1/8 Oz. \$6.00; 1/4 Oz. \$10.00.		.75				
COREOPSIS. P. Grandiflora. Double Sunburst. 2 ft. Double flowers 3 1/2 inches across. Rich yellow.			.25	.75	2.50	
Mayfield Giant. Single, intense yellow large flowers.			.15	.50	1.75	

COSMOS		Trade Pkt.	1/4 Oz.	Oz.	1/4 Lb.	Lb.
FIESTA. Top All-America's award winner for 1952. New color, a true scarlet, grows 2 1/2 feet high.		.25	1.00	3.50		
Sensation. Flowers 4 to 5 inches across are produced in ten weeks. Pinkie. Pink. — Cardinal. Crimson. Purity. White. — Mixed. Each of the above.			.25	.75	2.50	
Early Double Dwarf. Comes about 50 per cent true to type. Mixed Beauty.		.25	.50	1.50		
Late Single Tall (Mammoth-flowering Type). Lady Lenox, Pink. Crimson. Lady Lenox, White. Mixed. Each of the above.			.15	.50		

Radiance. The coloring is deep rose with a wide central zone of deep crimson. 5 ft.		.25	.60	2.00		
CYCLAMEN — Giant-Flowered. Asmusen's Strain. Unsurpassed in size, color and substance. The germination of our seed is about 90 per cent. Pure White; White with Carmine-Eye; Light Salmon; Dark Red; Cherry-Red; Bright Fire Christmas color. Each, 100 seeds \$2.50; 250 seeds \$5.50; 1000 seeds \$20.00.						

CYNOGLOSSUM. Firmament (Chinese Forget-me-not) All America Winner. Bright indigo-blue blooms. Myosotis-like and sweetly perfumed. 15 to 18 in.		.20	.75	2.50		
CYPRESS VINE, MIXED (Ipomoea Quamo-clif). 1/2 Oz. 40c			.75	2.50		
DAHLIA, Dwarf Bedding Hybrids. Grows 18 to 24 inches high. Flowers are semi-double and double. Extensive color range.		.25	.75	2.50		
DIDISCUS caerulea (Queen Anne's Lace Flower). Easily grown and a splendid cut flower.		.15	.35	1.25	4.00	
DIGITALIS (Foxglove). Giant Shirley Mixed.		.25	.50	1.50	5.00	
Gloxiniaeflora Mixed.			.30	1.00		

DIANTHUS—Pinks		Trade Pkt.	1/4 Oz.	Oz.	1/4 Lb.	Lb.
Double Annual Varieties						
Chinensis, Mixed (China Pink).		.25	.75	2.50		
Heddewigi, Mixed.		.25	.75	2.50		
Single Annual Varieties						
Heddensis, Westwood Beauty. All America Winner. Grows 1 ft. high. Colors range from fiery crimson to deep velvet red.		.35	1.25			
Laciniatus, Gaiety. Large fringed flowers in a wide range of colors.		.35	1.25			
Perennial Varieties						
Plumarius, Single Mixed. Large fragrant flowers.		.35	1.25			
Plumarius, Double Mixed. Double, fringed, fragrant flowers.		.25	.50	1.50		

DELPHINIUM—Perennial Larkspur		Trade Pkt.	1/8 Oz.	1/4 Oz.	Oz.	1/4 Lb.
Pacific Hybrids						
Black Knight Series. Very dark blue, individual flowers of beautiful round form, with heavy texture.						
Blue Bird Series. Clear medium blue with white bee.						
Blue Jay Series. Medium to dark blue with dark bee.						
Cameliard Series. A pure lavender self, with white base.						
Galahad Series. Clear white flowers with a very heavy glistening texture. Pyramidal spikes with well-spaced flowers.						
Guinevere Series. Light pink-lavender self with white bee. Individual florets 2 1/2 to 3 inches in diameter; large spikes. Color similar to Stock, Silvery Lilac.						
King Arthur Series. Brilliant royal violet with large white bee. Individual florets 2 1/2 inches in diameter. Long graceful spikes.						
Round Table Series. Noble mixture.						
Summer Skies Series. Clearest light blue with white bee. Florets 2 1/2 inches in diameter.						
Each of above 9.	1.25	2.50	4.00	14.00		
Mixture of All Shades.	1.00	2.00	3.50	12.00		
New Hollyhock Strain. A fine mixture.	.50	1.00	1.75	6.00		

DIMORPHOTHECA (African Golden Daisy)		Trade Pkt.	1/4 Oz.	Oz.	1/4 Lb.	Lb.
Aurantiaca Hybrida. Mixture.		.25	.50	1.50		
DOLICHOS Lablab, Mixed (Hyacinth Bean). Lb. \$1.50				.15	.50	
DORONICUM caucasicum (Leopard's Bane) P. Bright yellow, daisy-like flowers 3 inches across. 3 Pkts.	1.25					
DRACAENA indivisa. Long slender leaves.	.25		.75	2.50		
EUPHORBIA variegata (Snow-on-the-Mountain).		.15	.50	1.50		
ESCHSCHOLTZIA (California Poppy) Choice Mixed.		.30	1.00			

FORGET-ME-NOT (Myosotis)		Trade Pkt.	1/4 Oz.	Oz.	1/4 Lb.	Lb.
Alpestris, Royal Blue. Rich indigo-blue. 1 ft.	.25	.60	2.00	7.00		
Alpestris Victoria, Blue. 6 inches.	.25	.60	1.00	3.00	10.00	
Hybrida, Ruth Fischer. Flowers up to 1/2 in. in diameter of true forget-me-not blue. Ideal not plant. 1/32 Oz. \$1.25; 1/16 Oz. \$2.00.	.50	3.50				
Palustris semperflorens (Everblooming). Creeping habit. Clear pale blue with small yellow eye. 6 in.	.25	.50	1.50	5.00		
FOUR O'CLOCK. (Marvel of Peru) Annual. Finest Mixed. Lb. \$4.50.			.35	1.25		

GAILLARDIA		Trade Pkt.	1/4 Oz.	Oz.	1/4 Lb.	Lb.
Annual Varieties						
Aurea. Single; rich yellow.		.50	1.50			
Indian Chief. Single; bronze red.		.50	1.50			
Picta Lorenzianna. Gaiety. Double; finest mixed colors.		.50	1.50			
Perennial Varieties						
The Dazzler. Red, bright orange tip.	.25	.50	1.50	5.00		
Portola Hybrids. The flowers are enormous and the color range is reddish bronze and gold.	.25	.50	1.50	5.00		
GERBERA (Transvaal Daisy). Fine selection of colors. 100 seeds \$1.00; 250 seeds \$2.00; 1000 seeds \$7.50.						
GEUM, Double. P. Lady Stratheden. Golden yellow.	.25	.75	2.50			
GEUM, Double P. Mrs. Bradshaw. Orange-scarlet.	.25	.60	2.00			
GLOBE AMARANTH (Gomphrena; Bachelor's Button). Splendid for bedding. Mixed.		.15	.50			
GOETIA (Satin Flower) Annual. Double Azalea-flowered (Carminea) Pink, striking marked with darker shades. When in full flower it is a veritable mass of bloom. 30 in.		.20	.60	2.00		
GOETIA (Satin Flower) Annual. Tall Double, Mixed.	.25	.75				
GOURDS, ORNAMENTAL. Mixed. Both large and small sorts. Lb. \$5.00.			.50	1.50		

GYPSOPHILA (Baby's Breath)		Trade Pkt.	1/8 Oz.	1/4 Oz.	Oz.	1/4 Lb.
Elegans grandiflora alba. (Convent Garden Strain) A. We consider this one of the best strains on the market.....						
Lb. \$2.50, 5 Lbs. \$10.00						
Elegans grandiflora rosea. A. Delicate rose.....						
1/2 Oz. 40c						
Paniculata. P. Single White.....						
.15 .50 1.50						
Paniculata. fl.-pl. P. Double form of above.....						
.50 1.00 1.50 5.00						
Pacifica. P. Large pink flowers.....						
.35 .60 1.00 3.50						
HELICHRYSUM (Straw Flower) A. Everlasting Mixed.....						
.35 1.25						
HELIOTROPE, Lemoine's Giant Strain. Much improved over the older types.....						
.25 .75 2.50						
HEUCHERA sanguinea (Alum Root) Coral-red.....						
3 Pkts. \$1.25 .50						

HOLLYHOCK

Annual Varieties will bloom the first year if sown early.

Indian Summer. Bronze Medal, All America Winner 1949. Double flowers, very large. Various colors.....

3 Pkts. \$1.25 .50

Indian Spring. All-America Winner. A main stem, carrying double and semi-double, fringed pink flowers.....

.35 1.25

Perennial Varieties

Chater's Superb Double. A splendid strain. Newport Pink; Scarlet; Deep Rose; Pure White; Sulphur-Yellow; Salmon Rose; Mixed. Each.....

.25 .75 2.50

Single Mixed.....

.25 .75 2.50

HIBISCUS, Giant-flowering. (Marshmallow) P. Mixed.....

.30 1.00

HONESTY (Moonwort) Hardy biennial. Silvery seed-pouches, used for house ornaments.....

.30 1.00 3.50

HUNNEMANNIA, Sunlite (Giant Yellow Tulip Poppy). Semi-double; pure canary-yellow.....

.35 1.25 4.00

IMPATIENS, **Sultani Hybrids.** Fine selection of colors. **Holsti Hybrids.** Fine mixture. Each of above.....

3 Pkts. \$1.25 .50

IPOMOEA (Morning-Glory)

Heavenly Blue. Bright sky-blue.....

.50 1.75

Scarlett O'Hara. Striking carnelian-red. 1/2 Oz. 40c, Lb. \$6.00

.75 2.50

Pearly Gates. All America Silver Medal Flowers 4 1/2 in. Pure white... 1/2 Oz. 40c

.75 2.50

Rose Marie. Double rose-pink flowers.....

.50 1.75

Giant Imperial Mixed......

.60 2.00

Mexicana alba. Pure white.....

.50 1.75

Trade Pkt.	1/4 Oz.	1/2 Oz.	Oz.	1/4 Lb.
.25	.10	.25	.75	
.25	.50	1.50		

KOCHIA Childsi (Summer Cypress).....

LANTANA, Dwarf Mixed. Special Strain.....

LARKSPUR

The New "Supreme" Larkspurs. The Ideal Cut-Flower Strain. An entirely new strain of the popular Giant Imperial or base-branching type. The plants have an ideal upright habit, with a tremendous central or main flower spike which is formed by a great many fully double large flowers with broad petals, closely and well spaced on the stem. Stems are 30 to 36 inches long.

Dark Blue. Rich violet-purple.

Lilac. Pleasing shade of clear lilac.

Pink. Clear rose-pink. One of the most desirable florist colors.

Rose.

Salmon.

White. Pure white, truly as pure as the driven snow.

Mixed. Includes the above colors as well as many others not yet on the market.

Each of the above.....

.25 .50 1.50 5.50

Giant Imperial Type

Blue Spire. Deep Oxford-blue.

Dazzler. Vivid lustrous carmine.

Exquisite Pink Improved.

Gloria Improved. A rich tone of deep rose.

Lilac King. Clear lilac

Pink King. Soft, lively salmon-rose.

Sweet Lavender. Rich lavender-blue.

White King. A new dazzling pure white. Mixed

Each of the above.....

.35 1.10 3.00

LATHYRUS latifolius (Perennial Sweet Pea) Mixed.....

.60 1.00

LAVANDULA, Munstead Strain Sweet Lavender, 1 ft.....

.25 .75 2.50

LUPINS

Annual Varieties

Hartwegi Kings. So superior to the Hartwegi type that we have discarded the regular strain. Plants 3 feet high, base branching, with six to eight spikes per plant. Excellent for cutting. King Mixed.....

Trade Pkt.	1/4 Oz.	1/2 Oz.	Oz.	1/4 Lb.
		.40	.75	2.50

Perennial Varieties

Russell Lupins. We offer the new English super strain. Mixture of unusual hybrids.....

.25 .60 2.00

Polyphyllus. Mixed.....

.25 .75 2.50

LIATRIS pycnostachya (Blazing Star) a native hardy perennial. Purple flowers.

.25 .50 1.50

LINUM (Flax) **Perenne P. Blue**.....

.15 .50

LOBELIA—Compact Varieties for Pots

Crystal Palace. Dark Blue.....

.25 1.00 3.50

Emperor William. Sky Blue.....

.25 1.00 3.50

Cambridge Blue. Bright blue.....

.25 1.25 4.00

Mrs. Clibran Improved. Large deep blue with white eye.....

.25 1.00 3.50

MARIGOLDS

African Types

Tall Double (2 1/2 ft.) All-double Lemon; All-double Orange; All-double Mixed. Each.....

.25 .50 1.50 5.00

Collarette Odorless. (2 1/2 ft.) Crown of Gold. Bright golden orange.....

.30 1.00 3.50

Gigantea. (3 1/2 ft.) Large flowered type, excellent for show purposes and garden decoration. **Orange Sunset,** fine deep orange; **Sunset Giants,** rich mixture. Each.....

.35 1.25 4.00

Chrysanthemum-Flowered (2 to 3 ft.)

Limelight, primrose or deep cream;

Early Sunshine, bright yellow; **Golden Glow,** odorless foliage. Bright golden yellow. Each.....

.30 1.00 3.50

Carnation-Flowered (2 1/2 ft.) **Yellow Supreme,** lemon yellow; **Guinea Gold,** brilliant golden orange. Each.....

.30 1.00 3.50

Mammoth Mum. The flowers are lemon-yellow and are 4 inches or more across and 2 inches deep.....

.25 1.00 3.50

Mission Giant Type

Goldsmith. About 2 feet high. Saffron-gold flowers double, 4 to 5 inches across, with quilled and incurved florets.....

.25 .50 1.50 5.00

Yellowstone. All-America Selection. Clear golden yellow.....

.25 .50 1.50 5.00

French Types

Scabious-Flowered

Double Harmony. 1 ft.....

.15 .50 1.75

Harmony Hybrids. 12 to 14 in.....

.15 .50 1.50

Dwarf Single

Flash. All America Silver Medal. Tangerine, overlaid rich red; other flowers range from vivid red through bronze to yellow. 18 in.....

.15 .50 1.75

Red Head. Opens deep and glowing mahogany-red, gradually bronzing to Auburn and then to bronzy gold.....

.25 .50 1.50

Naughty Marietta. Bright gold flowers. Each floret blotched and striped at its base with dark red.....

.25 .50 1.50

Dwarf Double

Butterball. Soft butter-yellow, each petal carrying a touch of maroon at the tip, surrounded by several rows of broad velvety-self-colored butter-yellow guard petals.....

.30 1.00 3.50

Royal Scot. All double rich mahogany and gold.....

.30 1.00 3.50

Spry. Crystal center of light yellow, which is surrounded by maroon outer florets.....

.30 1.00 3.50

Scarlet Glow. 1 ft. Bright fiery red.

.35 1.25 4.00

Yellow Pygmy. 9 in. Light lemon-yellow.....

.30 1.00 3.50

Dwarf Gigantea Type

Pot O'Gold. Large, loosely formed flowers, 4 inches in diameter, fully double. Deep orange.....

.30 1.00 3.50

MATRICARIA (Feverfew) Half-hardy Perennial. **Double White.** Special Strain.

.25 .75 2.50

Pure White.....

MESEMBRYANTHEMUM (Ice Plant) A.

.15 .50 1.75

Crytallinum. Pink.....

.15 .50 1.75

MESEMBRYANTHEMUM **Criniflorum.** Spreading plant with very attractive flowers.....

.25 .50 1.50

MIGNONETTE. **Red Monarch.** Deepest red. Plants compact; foliage strong; flower-spikes thick and heavy. Very sweet scented.....

.25 .75 2.50

MIGNONETTE. **Allen's Defiance.** Popular florists' variety.....

.15 .50 1.50

NASTURTIUMS

	Trade Pkt.	1/4 Oz.	Oz.	1/4 Lb.	Lb.
Dwarf or Globe. Double; Sweet Scented. Scarlet Globe, Ruby Globe, Mahogany Globe, Orange Globe, Golden Globe, Dwarf Globe Mixture. Each of the above.....			.30	1.00	3.00
Semi-Dwarf or Gleam. Double: Sweet Scented. Golden Gleam, Salmon Gleam, Moon Gleam, Cream, Orange Gleam, Mahogany Gleam, Glorious Gleam Mixture. Each of the above.....			.30	1.00	3.00
Dwarf Nasturtium. Large - flowering, Mixed. Single.30	1.00	3.00
Tall Nasturtium. Large - flowering, Mixed. Single.30	1.00	3.00
NEMOPHILA insignis. Blue. A. Bright blue flowers.15	.50	1.75	
NICOTIANA affinis. A. Sweet-scented. White star-shaped flowers.....		.25	.75	2.50	
NICOTIANA. Affinis Hybrids. Sweet Scented. 2 to 3 ft.....		.25	.75	2.50	
NICOTIANA. Crimson Bedder25	.50	1.50		
NIEREMBERGIA. Purple Robe. All-America Bronze Medal 1942. Deep violet-purple shade, maintaining its deep color even in full sun and hottest climate, 6 in. tall with a mature spread of some 10 to 12 in.....	3 Pkts. \$1.25	.50			
NIGELLA. Miss Jekyll. A. (Love-in-a-Mist.) Bright Blue.....		.15	.50	1.50	
PENTSTEMON. Sensation. Mixed Colors.25	1.00	3.50		

PANSIES

Pastoral Giants. Regular Strain. We recommend this strain as the finest we have ever seen. The blooms are large, heavy, and are carried well above the foliage on strong stems. Pure Golden Yellow; Pure Snow-White; Emperor William Blue, Dark; Lavender, Light; Mixed. Each of the above..... 1/16 Oz. \$1.25, 1/8 Oz. \$2.00	.75	3.50	12.00	44.00	
Super-Pastoral Giants. This superb strain of giant fancy Pansy is the culmination of years of scientific Pansy culture. A vigorous root system enables plants to bloom well into the hottest weather. Flowers are round, of immense size, firm texture and have strong stems. Pure Golden Yellow; Pure Snow-White; Lavender, Light; Emperor William Blue, Dark. Each..... 1/16 Oz. \$2.00, 1/8 Oz. \$3.50	1.00	5.00	17.50		
Exhibition Strain. This mixture has been especially prepared with blooms of large size, splendid texture..... 1/16 Oz. \$1.25, 1/8 Oz. \$2.00	.75	3.00	10.00		
Non Plus Ultra. A carefully prepared mixture of all colors and combinations of colors that exist in this highly meritorious flower. 1/16 Oz. \$1.00, 1/8 Oz. \$1.50	.60	2.50	8.00		
Swiss Giants Separate Colors Swiss Blue (Ullswater) Deep ultra-marine blue with darker blotches. Swiss Firebeacon. Bright wallflower red with a touch of orange. Swiss, Rhinegold. Canary-yellow with dark blotches. Swiss, Pure White. One of the best. Super-Swiss Giants. Mixed. Contains a very good selection of colors; large flowers with dark centers. Each of the above 5.....	1/8 Oz. \$1.75	.75	3.00	10.00	35.00
Greenhouse Pansies. Stupendous. Remarkable strain of gigantic proportions for the greenhouse, offered exclusively by Peter Henderson - Stump & Walter Co. The plants are veritable bushes, growing 4 feet high. Carried on thick, stiff stems 18 inches long are enormous flowers 4 to 4 1/2 in. in diameter, and in a complete color range..... 3 Pkts. \$5.00	2.00				

PETUNIAS

	Trade Pkt.	1/64 Oz.	1/32 Oz.	1/16 Oz.	1/8 Oz.
Pan American All-Double Strain. We are glad to be able to offer to the grower this new strain of American-grown All-Double Petunias. In various tests they have proved to be fully equal to the best pre-war varieties. Allegro. Deep Salmon. Caprice. Fine deep rose. Minuet. Orchid-lavender. Should be pinched to make shapely plants, as it is inclined to draw up. Nocturne. A deep shade of Elk's Pride purple. Sonata. Pure white, double. Should be pinched. Not as compact in growth as most varieties. Each of the above — 1/2 Trade Pkt. \$2.50, 1/128 Oz. \$6.50	4.00	13.50	25.00		
Glorious Mixed. Consists of both the tall and dwarf types in all the above colors..... 1/2 Trade Pkt. \$2.00, 1/28 Oz. \$6.50	3.50	12.00	21.00		
Outstanding Petunias Fire Chief. Fire-cracker-red. Flowers 2 1/2 to 3 in. in diameter with velvety texture. The color deepens toward the throat. 12 to 15 in. high..... 3 Pkts. \$1.25	.50				3.00
All Double Colossal Shades of Rose. Flowers 5 in. across, fully double, from salmon-pink through rose-pink to deep rich rosy mauve; 20 in. high. 1000 seeds.	1.00				
Dwarf Bedding Varieties Cheerful. 18 in. high. Light salmon-pink. 1/4 Oz. \$3.50	.50				2.00
English Violet. Violet-blue, 15 to 18 in..... 1/4 Oz. \$2.00, Oz. 7.00	.50				1.25
Flaming Velvet (Hybrida Type) 1 1/2 ft. Brilliant velvety scarlet..... 1/4 Oz. \$1.25, Oz. \$4.00	.25				.75
Snowstorm Improved. 12 to 16 inches high, with pure white flowers.....	.75	1.50	2.50	4.00	7.00
Cream Star. Soft cream-white, 9 to 12 in. high..... 1/4 Oz. \$1.25, Oz. \$4.00	.35				.75
White Cloud. 10 inches to 1 ft high..	.50		2.50	4.00	7.00
Velvet Ball. Deep velvety blood-red..	.50		2.50	4.50	
Dwarf Giants of California. Special blend..... 1/4 Oz. \$13.50	.50	1.50	2.50	4.00	7.50
Large-Flowering Single. Plain Edged Dwarf. Elks' Pride. Dwarf purple.....	.50	2.00	3.50	6.00	
Dwarf Pink Glory. Pure deep rose.....	.50	1.25	2.00	3.50	
Elk's Pride. Velvety purple.....	.50	1.50	2.50	4.00	
Large Single Fringed (15 to 18 in.) Theodosia. Rosy pink with golden throat. Outstanding.50	1.25	2.00	3.50	
Violaeca. Velvety violet-blue.....	.50	1.25	2.00	3.50	
White Beauty. Pure white.....	.50	1.00	1.50	2.50	
Single Fringed Mixed (Fluffy Ruffles)	.35	.75	1.25	2.00	
Balcony Type. Excellent for porch or window boxes and hanging baskets. Blue, Violet-Blue; Rose, Rose-Pink; Crimson, Deep Crimson; White. Each.... 1/4 Oz. \$1.25, Oz. \$4.00	.25				.75
Mixed. Contains all Petunia colors..... 1/4 Oz. \$1.00, Oz. \$3.50	.25				
Large Flowering Double Fringed. Finest Mixed. This mixture is grown for us by a specialist..... 3 Pkts. \$2.00	.75	5.00	8.50	15.00	
Single Bedding Varieties (Hybrida 1 1/2 ft.) Blue Bedder. Rich royal blue..... 1/4 Oz. 50c, Oz. \$1.50	.25				
Howard's Star Improved. Rosy crimson with white star..... 1/4 Oz. 75c, Oz. \$2.50	.25				
Rose King Improved. Lively rose-pink..... 1/4 Oz. 75c, Oz. \$2.50	.25				
Topaz Queen. Scarlet-rose..... 1/4 Oz. \$1.00, Oz. \$3.50	.35				
Mixed. Fine selection of colors..... 1/4 Oz. 60c, Oz. \$2.00	.25				
Ruffled Nano Compacta Garden Giants Mixed. Flowers are 4 to 5 in. across and the plants 12 to 15 in. high, in a wide variety of bright colors..... 3 Pkts. \$2.00	.75		3.50	6.00	

PETUNIAS—Continued

Single Bedding Varieties (Hybrida nana) (9 in.)	1/32 Oz.	1/16 Oz.	1/8 Oz.	1/4 Oz.	Oz.
Admiral. A fine reselected strain. The best dwarf clear blue Petunia.....	2.50	4.00	7.00		
Trade Pkt. 50c, 1/64 Oz. \$1.50					
Celestial Rose. An improved Rose of Heaven. Rich satiny rose.....			.60	1.00	3.50
Trade Pkt. 25c					
Heavenly Blue (Silver Blue). Reselect Light Blue.....			1.00	1.50	5.00
Trade Pkt. 35c					
Rosy Morn. Bright pink, with a white throat.....				1.00	3.50
Trade Pkt. 25c					
Rose of Heaven, brilliant rose.....				1.00	3.50
Trade Pkt. 25c					
Mixed				1.00	3.50

PHLOX DRUMMONDI

Tall Varieties (15 in.) White; Purple; Chamois-Rose; Scarlet; Yellow; Mixed.			.60	2.00	
Trade Pkt. 25c, 1/4 Lb. \$7.50					
Dwarf Varieties (6 in.) Mixed75	2.50	
Trade Pkt. 25c, 1/4 Lb. \$8.50					
New Gigantea Types					
Red Glory. Light crimson, cream-white eye. 1 1/2 ft.					
Rosy Morn. 1 ft.					
Salmon Glory. Salmon-pink with cream-white eye. 10 in.					
Gigantea, Art Shades. Soft pastel colors. 9 in.					
Each of the above...Trade Pkt. 50c			1.25	4.00	
Hardy Phlox (Phlox decussata) Beltsville Hybrids. A splendid mixture comprising all colors.....			.30	1.00	

Trade Pkt.	1/8 Oz.	1/4 Oz.	Oz.	1/4 Lb.
------------	---------	---------	-----	---------

PRIMULA-Primrose. Primula obconica.					
Finest Mixed. Contains every conceivable color known in this popular greenhouse plant.....	3 Pkts. \$1.25	.50			
Hardy Primulas					
Veris, Mixed (English Cowslip).....	.50	2.00	3.50		
Vulgaris (True English Primrose)					
Canary-yellow, fragrant.....	.25	.60	1.00	3.50	
PHYSALIS (Chinese Lantern Plant).					
Francheti.30	1.00	3.50

POPPIES

Single Annual Varieties					
Shirley, American Legion. Dazzling orange-scarlet.....			.15	.50	1.50
Single Shirley, Mixed15	.50	1.50
Double Annual Varieties					
Sweet Brier. Double blooms of deep rose-pink.....			.30	1.00	3.50
Double Shirley, Mixed. All colors.....			.15	.50	1.50
Perennial Varieties, Iceland (Nudicaule)					
Sanford's Giant Strain. All colors.....	.25		.75	2.50	
Perennial Varieties, Orientale					
Scarlet. Brilliant scarlet.....	.25		.60	2.00	
Mixed.25		.50	1.50	
PLATYCODON grandiflorum. P. Steel-blue. 2 1/2 ft.....	.25	.40	.75		
PORTULACA. Single. Mixed.....			.35	1.25	4.00
Double. Mixed.....		.40	.75	2.50	
PYRETHRUM, Single Hybrids.....	.25	.75	1.25	4.00	
Double Hybrids.....	.50	1.00	1.75	6.00	

SALVIA

Annual Varieties					
America or Globe of Fire. The bushy plants do not grow over 15 inches high, with large spikes of brilliant scarlet flowers carried well above the plant, making a total height of about 3 feet. Fine for borders and beds.....	.50	1.00	1.50	5.00	
Blaze of Fire. 12 inches high.....	.50	1.25	2.00	6.50	
Bonfire. Long, stiff spikes of bright scarlet flowers.....	.25	.75	1.25	4.50	15.00
Harbinger. Dwarf, large-flowering scarlet variety blooming in July from early-sown seed. 15 in.....	.50	1.00	1.50	5.00	
Splendens (Scarlet Sage). Beautiful bright scarlet 3 ft.....	.25	.65	1.15	4.00	13.00
Zurich. The plant does not exceed 12 inches in height and bears a great profusion of bright scarlet flowers....	.50	1.00	1.50	5.00	
Perennial Varieties					
Farinacea. Light blue flowers on long spikes.....	.25		.60	2.00	
Blue Bedder. Similar to the above except that the color is beautiful deep blue.....	.50		1.25	4.50	

SCABIOSA—Mourning Bride

Tall Annual Varieties (2 1/2 to 3 ft.)	Trade Pkt.	1/4 Oz.	Oz.	1/4 Lb.
Blue Moon. Large, double, cone-shaped flowers 2 3/4 in. across. Rich deep lavender-blue.				
Salmon Beauty. Large blooms of pure salmon.				
Loveliness. Varying tones of soft delicate rose.				
Peach Blossom. Peach-blossom pink.				
Rosette. Beautiful deep rose, suffused salmon.				
Shasta. Immense blooms of pure white.				
Orchid Shades.				
Black Knight.				
Rich Red.				
Yellow.				
Finest Mixed.				
Each of the above.....		.25	.75	2.50
Perennial Varieties				
Giant Hybrids. Isaac House Strain.....	.25	1.00	3.00	
Caucasica. Light blue.....	.25	.60	2.00	
Caucasica alba. White.....	.25	.60	2.00	
SALPIGLOSSIS superbissima, Finest Mixed. 3 ft.30	1.00	
SALPIGLOSSIS. Dwarf Giant-Flowering, Mixed. 18 to 24 in.....		.35	1.25	
SCHIZANTHUS. Canadian Super-Giants. Blooms 2 in. across.....	1.00			
SCHIZANTHUS. Giant Flowering. Hybrids, Mixed.....	.25	1.00	3.50	
SHAMROCK. True Irish.....			.50	1.75
Lb. \$6.00, 5 Lbs. \$25.00				
STATICE. Sea Lavender. A. <i>Sinuata.</i> Kampf's Tall. Improved. Deep Blue.....	.20	.60	2.00	
STATICE. Sinuata, Mixed Hybrids. All Colors..	.20	.60	2.00	

STOCKS

Giants of California. A very early-flowering class with the branching habit of the Bismarcks by producing large flowers on longer stems. It is a definite improvement and is now rated by the florist as the acme of branching stocks. Santa Maria, White. Mixed. Each.....	.50	1.00	3.50	
Early Giant Imperial. (Improved Bismarck). We have found this strain so far superior to the Giant Perfection type that we have decided to discard the latter. Antique Copper, Hellebore-red; Apple Blossom, Blush-pink; Blood-Red, Deep red; Buttercup, Rich deep yellow; Chamois-Rose, Pale rose; Dark Blue; Elk's Pride, Royal purple; Lavender; Rose, Deep rose-pink; Shasta, New giant white; Mixture. All colors. Each.....	.50	1.00	3.50	
Non-Branching. We are pleased to be able to offer to the florists this wonderful strain producing true one-stalk plants. The individual flower-spikes are erect and produce from 15 to 20 improved blooms.				
White Varieties				
Pure White. Our best pure white. Large florets and well-formed compact spikes.				
Gardenia. An outstanding white. Late blooming.				
Pink, Red and Rose Varieties				
American Beauty, similar to the American Beauty Rose.				
Ball Supreme, rich silvery rose. Extra-long, heavy spikes.				
Chamois-Rose. Blending of creamy buff and pink.				
Deep Rose. Bright rose-pink.				
Ruby. Crimson-red; fine long stems.				
Blue, Lavender and Purple Varieties				
Ball Blue. Rich lilac shade.				
Lilac-Lavender. The most popular variety in this shade.				
Purple. Deep purple with long stems.				
Silvery Lilac. A very attractive shade.				
Miscellaneous Varieties				
Deep Apricot. In our estimation this is one of the best varieties of this popular florist flower. We feel sure it will prove very satisfactory in the cut-flower market. The flowers are very large, have long stems and are a beautiful shade of deep apricot.				
Yellow Wonder. Deep creamy yellow.				
Mixed. A special mixture consisting of all the popular colors.				
Each of the above, 1/2 Trade Pkt. 60c	1.00	2.50	9.00	
SOLANUM Capsicastrum (Jerusalem Cherry)	.25	1.00	3.50	

SWEET PEAS

Oz. ¼ Lb. Lb.

Cuthbertson Sweet Peas. Superior for resistance to the heat which has prevented successful growing where high temperatures in early spring burn standard varieties. Flowers are large, long-stemmed, very fragrant and earlier than summer-flowering Spencers. The vigorous vines do well under glass or outside.

Coline. Scarlet. **Kenneth.** Deep crimson.
Danny. Navy-blue.
David. Rose-crimson. **Lois.** Rose on white.
Evelyn. Creamy pink. **Liza.** Maroon.
Frank G. Lavender. **Marion.** Cream.
Hazel. Light blue. **Tommy.** Blue.
Janet. White.

Each of the above.....½ Oz. 35c .65 2.00 .650
 Mixed.½ Oz. 30c .55 1.75 5.50

Early-Flowering Spencer Novelties. Modern Sweet Peas have been developed to meet almost every grower's needs. This new spring-flowering class should be preferred for greenhouse sowing from now on because of the better stem length plus the fact that they will last longer into the spring than the weaker-growing winter varieties. This group should also prove valuable for outdoor sowing in the fall in those parts of the Gulf States where spring temperatures are not too high.

Ball Orange Improved. Brilliant Orange.
Ball Rose Improved. Glowing Rose.
Bridesmaid. Deep silvery pink; long stems.
Daphne. Soft salmon-pink on cream ground.
Fiesta. Orange-scarlet; sunproof.
Princess Blue. Rich belladonna-blue.
Tahoe. Beautiful shade of mid-blue.
Treasure Island. Golden Orange, duplexed.
Triumph. Soft lilac-mauve.
Twilight. Bright clear lavender-lilac-mauve.

Each of the above.....½ Oz. 30c .50 1.50 5.50

Early Flowering Varieties

American Beauty. American-beauty rose.
Amethyst. Bright mauve-purple.
Apollo. Soft salmon-pink.
Attraction. Salmon-rose; long stemmed.
Bacchus. Rich red-maroon, double standards.
Blue Danube. Mid-blue self.
Boon. Deep Salmon-pink on light cream ground.
Columbia. Salmon-rose standard, white wings.
Eileen. Begonia-rose.
Gardenia. Best long-stemmed pure white.
Grenadier. Glowing scarlet, similar to a poppy.
Harmony. Early-flowering lavender.
Hiawatha. Strong grower, deep rose; large.
Hope. Large flowered; black seeded; pure white.
Jeanne Mamitsch. Pink, shaded deep pink.
Josie. Rose-pink; large and long stems.
Laddie Improved. Light rose-pink; long stemmed.
Majestic Rose. Deep rose-pink; long stemmed.
Michigan. Large; pure lavender.
Mother Machree. Blend of coral and golden rose.
Mrs. Herbert Hoover. Best clear blue.
Oriental. Black seeded; cream.
Pride. Cerise; long stemmed.
Rhapsody. Rosy lavender.
Rhumba. Glistening golden cerise.
Sequoia. Golden cerise; long stems.
Shirley Temple. Soft rose-pink; long stems.
Snowstorm Improved. Pure White; white seeded.
Sparks. Bright orange-scarlet.
Titania. Mammoth flowers of deep rose.
Top Hat. Deep velvety violet-blue.
Tops. Delicate rose-pink.
Top Sergeant. Blood red-crimson.
White Harmony. Pure white; black seeded.

Each of the above.....½ Oz. 30c .50 1.50 5.50
 Mixed. Fine mixture of all colors....½ Oz. 25c .45 1.35 5.00

Summer-flowering Varieties

Affection. Coral-pink on cream.
Ambition. Deep lavender.
Bonnie Ruffles. Duplexed pink.
Capri. Clear light blue.
Chinese Blue. True deep blue.
Crony. Golden salmon.
Golden Dragon. Duplex type. Standards bright orange, wings deep orange-rose.
Grandeur. Shell-pink on white.
Mastercream. Black seeded; cream, duplexed.
Model. Pure white; black seeded.
Welcome. Dazzling scarlet.

Each of the above..... .30 1.00 3.50
Grand Prize Mixture..... .25 .85 3.00

SWEET WILLIAM (Dianthus barbatus)

Trade Pkt. ¼ Oz. Oz. ¼ Lb.

Single Dark Crimson..... .30 1.00 3.50
Single White..... .30 1.00 3.50
Single Tall, Mixed..... .25 .75 2.50
Double Tall, Mixed..... .25 .50 1.50 5.00
Single Dwarf, Mixed..... .25 .60 2.00

Double Dwarf, Mixed. A special selected strain of this popular flower growing only 6 to 9 in. high. An excellent variety for basket work. Contains a very fine range of colors..... **Lb. \$20.00** .25 .50 1.75 6.00

Holborn Glory. Distinct shades, large eye..... .30 1.00 3.50
Newport Pink. The finest salmon-rose..... .30 1.00 3.50
Scarlet Beauty. The best single deep scarlet... .30 1.00 3.50

Sweet Wivelsfield. Trusses of bloom in wonderful colors; perpetual flowering. Excellent for cutting.25 .75 2.50

TAGETES signata pumila. Little Giant..... .25 .50 1.50
THALICTRUM dipterocarpum (Meadow Rue) P.35 1.25
THUNBERGIA, Mixed (Black-eyed Susan)..... .30 1.00
TORENIA Fournieri, A...... ⅛ Oz. \$1.00 .50 1.75
TRITOMA, Mixed (Red-Hot Poker) P...... .25 .50 1.50

VERBENA

Bush Type—Giant Flowered. 8 to 10 in. high and 12 to 15 inches across, with the flower-heads practically touching each other.
Firelight. Scarlet.
Salmon Queen.
Roselight. Rose.
Snow-White.
Starlight. Intense blue, cream eye.
 Each of the above..... .25 1.00 3.50

Giant-Flowering Varieties (Hybrida Grandiflora Type)
Annapolis Blue. Beautiful mixture of shades of mid-blue, with no tendency to purple.
Beauty of Oxford Hybrids. Clear rose-pink to rose-red.
Crimson Glow. Vivid self crimson.
Etna. Geranium-red, yellow eye.
Lavender Glory. Small white eye.
Royale. Blue with yellow eye.
Salmon-Pink. Pure salmon self.
Spectrum Red. Dazzling shade of red.
White King. Pure white.
 Each of the above..... .25 .75 2.50
Finest Mixed. All colors..... .25 .60 2.00

Miniature Type. 6 to 9 in. **Mixed.** All colors.. .25 .50 1.50 5.00

Perennial Type. Venosa. (Hardy Garden Heiotrope).25 .60 2.00

VERONICA spicata. (Speedwell) P. Blue 1½ ft..... ⅛ Oz. \$1.00 .50 1.75

VINCA Rosea. **Alba, pure white; Rose, bright rose; Rosea, Alba, white with rosy eye; Finest Mixed, Each**..... .25 .75 2.50

VIOLA

Viola Cornuta Hybrids (Tufted Pansies)
Blue Gem. (Jersey Gem)..... .50 5.00 17.50
 3 Pkts. \$1.25; ⅛ Oz. \$3.00
Lutea splendens. Chrome-yellow..... .50 2.00
 ⅛ Oz. \$1.25
White Perfection. Pure white..... .50 2.00
 ⅛ Oz. \$1.25

Large-Flowered Hybrids
Arkwright Ruby. Terra-cotta on crimson... .50 3.50
 3 Pkts. \$1.25, ⅛ Oz. \$2.00
Blue Perfection. Medium clear blue..... .50 2.00
 3 Pkts. \$1.25
Chantreyland. Bright apricot-orange..... .50 3.50
 3 Pkts. \$1.25, ⅛ Oz. \$2.00
Finest Mixed. All colors..... 3 Pkts. \$1.25. .50 2.00

Tested Seeds for the Market Grower & Florist

ZINNIAS Newest and Most Improved Varieties

	Oz.	¼ Lb.	Lb.		¼ Oz.	Oz.	¼ Lb.	Lb.
Giant Double Dahlia-Flowered				Midget Improved (Lilliput)				
Canary Bird. Clear yellow.				Canary Gem. Crimson Gem. Golden Gem.				
Crimson Monarch. Flaming crimson.				Pastel Shades. Rosebud. Rose-pink. Salmon				
Dream. Deep lavender-blue.				Gem. Scarlet Gem. Pink Gem. White Gem.				
Eldorado. Salmon-apricot.				Mixed.				
Exquisite. Light rose, deep center.				Each of the above.....	.35	1.00	3.50	12.00
Golden Dawn. Golden yellow.								
Oriole. Orange and gold.				Fantasy Type				
Polar Bear. Large, pure white.				White Light. Pure white.				
Royal Purple. Deep rich purple.				Orange Lady. Bright orange.				
Will Rogers. Bright-scarlet.				Rosalie. Bright rose.				
Mixed. A mixture of all shades.				Wildfire. Intense scarlet.				
Each of the above.....	¼ Oz. 35c	1.00	3.50	12.00				
				Stardust. Deep yellow.				
California Giants				Mixed. All shades.				
Brightness. Bright pink.				Each of the above.....	.35	1.25	4.00	14.00
Cherry Queen. Cerise-rose.								
Enchantress. Light rose.				Scabious-Flowered. Howard Crested. 4 to				
Golden Queen. Lemon-orange.				5 in. across, with rounded cushion-like				
Miss Wilmott. Soft pink.				center, surrounded by broad, flat guard				
Orange King. Burnt-orange.				florets.35	1.25	4.00	14.00
Orange Queen. Golden orange.								
Purity. White.				Other Fine Zinnias				
Rose Queen. Bright rose.				Mexican or Haageana. 9 to 10 inches.				
Scarlet Gem. Glowing scarlet.				Deep orange.30	1.00	3.50	
Violet Queen. Beautiful violet.								
Mixed.				Linearis. Spreading plant, 12 inches tall.				
Each of the above.....	¼ Oz. 35c	1.00	3.50	12.00	.60	2.00		
				Golden. Orange, striped yellow.....				
Dwarf Double-Flowering (Cut-and-Come-Again)				Trade Pkt. 25c				
Pinkie. Rose-Pink. Crimson. Golden.								
Rose. Spun Gold. Butter-yellow. White. Ca-				Persian Carpet. A 1952 Novelty and All				
nary-yellow. Scarlet. Mixed.....				America winner. Small flowers like tiny				
Each of the above.....	¼ Oz. 25c	.75	2.50	9.00	.75	2.50		
				Dahlias in a varied combination of col-				
				ors often tipped yellow, 12 to 15 inches				
				high.....				

BULBS for Spring Planting

	10	100	1000		10	100
AMARYLLIS, Giant Hybrids—2¾ in.....	5.00	45.00	400.00	HARDY LILLIES		
ANEMONE, Excelsior Mixed.....	.60	5.00		Auratum. Golden-branded Lily. 8 to 9 in....	3.25	30.00
				Canadense flavum. Yellow.....	3.00	25.00
BEGONIAS (Tuberous-rooted)				Canadense rubrum. Red.....	3.00	25.00
DOUBLE CAMELLIA-FLOWERED				Olympic Hybrids. Fragrant; trumpet white		
Apricot, Crimson, Pink, Scarlet Yellow, White				outside, varying from emerald-green to pink-		
Mixed. 1½ to 2 in.....	1.80	15.00	145.00	purple inside. Blooms in July and August,	3.75	35.00
				after Regale. 6 to 8 ft. tall.....	4.00	32.00
SINGLE FRILLED AND RUFFLED				Henryi. Yellow Speciosum. 8 to 9 in.....		
Crimson, Pink, Scarlet, Yellow, White Mixed.				Longiflorum Estate. White Hardy Easter		
1½ to 2 in.....	1.80	15.00	145.00	Lily. 8 to 9 in.....	5.00	40.00
				Regale. Gorgeous Lily from the wilds of		
MULTIFLORA TYPE. A new type with smaller				Tibet. White trumpet.		
blooms than the Camelia-flowered but much				6 to 7 in.....	1.50	12.00
more free-flowering. Plants are covered all				7 to 8 in.....	2.00	15.00
summer with semi-double and double flowers				8 to 9 in.....	3.00	25.00
2 to 3 in. across. Mixed shades.....	1.80	15.00	145.00	9 to 10 in.....	4.00	35.00
				Speciosum rubrum. Japanese grown. 8 to 9		
CALADIUM esculentum (Elephant's Ear)				in.....	3.25	30.00
Mammoth Bulbs. 7 to 9 in.....	1.50	12.00		Tenuifolium. Bright scarlet.....	1.50	12.00
Jumbo Bulbs, 9 to 11 in.....	3.00	25.00		Tenuifolium, Golden Gleam. Golden yellow..	3.00	22.50
FANCY-LEAVED. Our list is composed of the				Tigrinum, Single. Single orange-scarlet Tiger		
best named standard and newer sorts, in-				Lily.	3.00	22.50
cluding the best of the Brazilian types				Tigrinum, Double.	3.00	22.50
and covering a wide range of the brightest				Umbellatum grandiflorum erectum. Vivid or-		
colorings and markings, difficult to describe				ange-scarlet.	3.50	30.00
accurately. Mixed Varieties. Extra choice...	2.00	18.00				
				MONTBRETIAS		
CALLA, Golden Yellow (Richardia Elliottiana)				Apricot Queen. Rich golden apricot.....	2.00	15.00
1¾ in.	1.50	12.00		California. Deep golden yellow.....	1.00	7.50
2 in.	1.75	16.00		Comet. Rich deep golden orange.....	2.00	15.00
Pink (Zantedeschia Rehmanni).....	4.00	35.00		Fire King. Large; glowing scarlet.....	1.00	7.50
				His Majesty. Large flowers; brilliant red with		
CANNAS 3 to 5 Eyes				yellow center.	2.00	15.00
City of Portland. Deep pink. Green foliage,				James Coey. Rich vermilion suffused golden		
5 ft.70	6.00	55.00	orange.	2.00	15.00
King Humbert. Orange-scarlet. Bronze foliage.				Lady Wilson. Very large; bright yellow.....	2.00	15.00
5 ft.70	6.00	55.00	Red Knight. Crimson, orange shadings.....	2.00	15.00
Richard Wallace. Yellow. Green foliage. 4 ft.				Talisman. Large; deep orange.....	1.00	7.50
The President. Scarlet. Green foliage. 5 ft....	.70	6.00	55.00	Transcendent. Deep orange-scarlet.....	1.00	7.50
Yellow King Humbert. Yellow. Green foliage.				Mixed Large-flowering Varieties.....	1.00	7.50
5 ft.70	6.00	55.00	OXALIS Deppei alba. Small white flowers....	.40	3.00
GLORIOSA Rothschildiana (Glory Lily).....	11.50			American Shamrock. Clover-like foliage;		
Each \$1.25				pink flowers.25	1.50
				RANUNCULUS (Buttercup). Mixed Colors.....	.60	5.00
GLOXINIA. Top-size bulbs. 1½ to 2 in. Ready				TIGRIDIA (Mexican Shell-flower).....	.70	6.00
for immediate shipment. Crimson; Scarlet; Red;				TUBEROSE, Excelsior Double Pearl. 4 to 6 in.	1.50	10.00
White Border; Purple Blue, White-pink Border;				ZEPHYRANTHES candida. White.....	.55	4.00
Tigrina, Spotted; White.....	2.50	22.50	200.00	Rosea. Pink.90	7.50

PETER HENDERSON, STUMPP & WALTER CO.

48 CORTLANDT STREET, NEW YORK 7, N. Y.