

## **Historic, archived document**

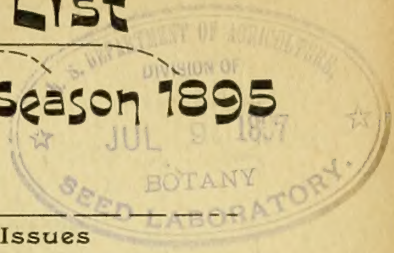
Do not assume content reflects current scientific knowledge, policies, or practices.



62.75

# Wholesale Trade Price List

for Season 1895



Preserve this for  
Telegraph Cipher



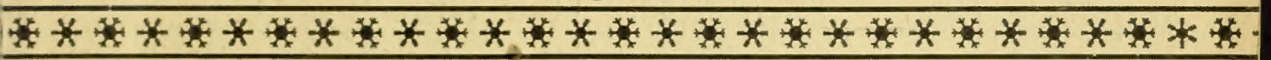
Cancel all  
Former Issues

PRICES SUBJECT TO CHANGE WITHOUT NOTICE

## Ely's · Reliable · Garden · Seeds



Sown with Ely's Evergreen Lawn Grass Seed



# Z. DEFOREST ELY & Co. SEED GROWERS AND FLORISTS

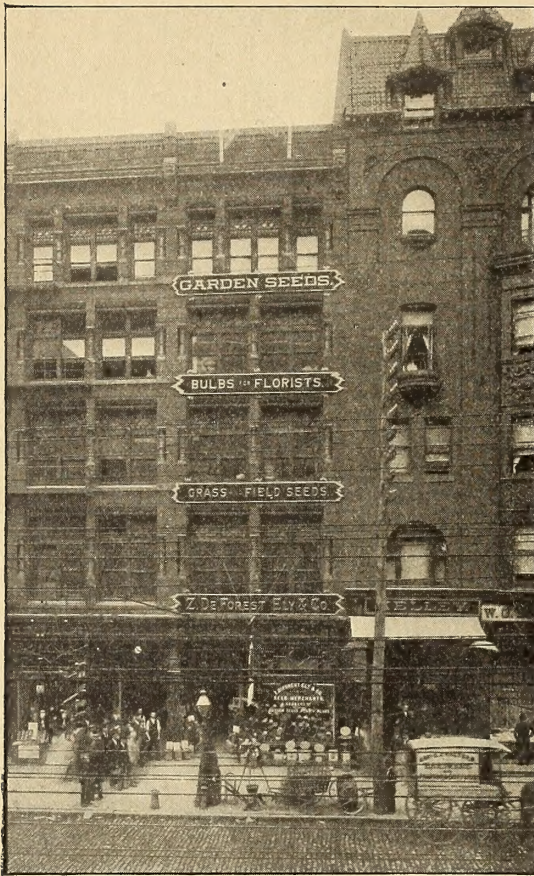
IMPORTERS OF BULBS AND FLORISTS' SUPPLIES

1024 Market Street, Philadelphia, Pa.

TELEPHONE NO. 3415  
POST OFFICE BOX 1176

REGISTERED CABLE ADDRESS  
DEFOREST. PHILADELPHIA

# OUR STORE AND WHAT WE DO IN IT



1024 MARKET STREET.

## Z. DeForest Ely & Co.

**Wholesale Florists and Commission  
Dealers in Cut Flowers**

ROSES, CARNATIONS, VALLEY, CHRYSANTHEMUMS,  
VIOLETS, &c.

This department is under careful management, entirely apart from the other branches of our business. Each grower's flowers received and numbered and sold on individual merit. A large refrigerated room, lighted by electric light, admits of buyer making his own choice. Weekly reports of sales and prompt cash settlements. Promptness, fidelity and fair dealing are our foundation for success.



**Z. DeForest Ely & Co.**  
**Seed Merchants  
and Growers**  
RELIABLE  
Garden, Field and Flower Seeds  
AT POPULAR PRICES

### Our Specialties

Vegetable Seeds in packets for the Wholesale Trade, at \$10.00 per 1000 papers, all kinds and quantities of each as selected by the purchaser. Catalogues supplied free to sell them by.

On Onion Sets, Onion Seed, Selected Turnip and Cabbage Seeds, in packets and in bulk, we have few equals and no superiors for purity, reliability and excellence.

## Z. DeForest Ely & Co.

Importers of and Dealers in

### FLORISTS' SUPPLIES

A well-assorted stock at fair prices and no misrepresentations. Artificial Leaves and Flowers, Metal Designs and Baskets, Immortelles and Cape Flowers, Dried Grasses, Flat and Standing Sheaves, Bouquet Papers, Florists' Letters, Chenille, Pot Covers, Tin Foil, Toothpicks and Stemming Points. Wire designs and all Florists' Hardware and Tools, Kinney and Success Pumps, Brass Syringes, Cane Stakes, etc., etc. Wholesale Priced Catalogues mailed on application.

## Z. DeForest Ely & Co.

Importers and Growers of

### Bulbs for Florists

**Our Terms** We allow 4 months credit, or 5 per cent. discount for cash in 10 days from date of bill. All special offers and bills under \$25.00 are net.

**Conditions** We guarantee good, sound Bulbs of first quality or no sale, and if not such, they can be returned at our expense, if within five days after receipt by you.

**A Helper** We furnish free to our customers buying bulbs of us to sell again, a nice retail catalogue with their name and address alone on it. Priced to give a good margin of profit and yet attract to them local orders.

Wholesale Price List mailed on application.



# Z. DeForest Ely's

## RELIABLE · GARDEN · SEEDS

PHILADELPHIA, NOVEMBER 1, 1894

III III III III

**OUR TERMS.** On General Orders of Garden Seeds, etc., **Four Months' Acceptance, or 5 per cent. Discount for Cash, if paid within 10 days.**

**Florists' Supplies,** Bird Seeds, Bulbs, Potatoes, Onion Sets, Grass and Field Seeds, Peas, Beans and Corn, **NET CASH,** subject to sight draft, at our option, after shipment.

**All Special Offers are Net Unless Otherwise Stated**

**Accounts Due** are subject to draft with Exchange. New correspondents must give satisfactory references

**Perishable Goods,** such as **Onion Sets** and **Potatoes,** are by the seed trade sold and shipped only at owner's risk. For damage arising by delay, heat or cold in transit, *we will not be responsible.* All claims for damage must be made **within 10 days** after receipt of goods.

**Directions for Shipping** should accompany all orders. Where these are omitted we use our best judgment. No insurance effected unless so ordered.

**Express C. O. D.** Orders must be accompanied with cash to the extent of 25 per cent. of order.

*While we exercise the greatest care to have all seeds pure and reliable, we do not give any warranty expressed or implied. If the purchaser does not accept the seeds on such terms and conditions, they must be returned at once, and the money that has been paid for same will be refunded.*

The prices herein quoted are those governing us at this date; **we reserve the right to reject any and all orders not satisfactory to us;** changes will be made only where necessary from the market fluctuations. All quotations are cancelled by the issuance of a later edition,

### VITALITY OF SEEDS

The following schedule gives the length of time that seeds will grow freely. It is true that some varieties will even keep longer than the period mentioned, but their strength will be greatly impaired. Parsley and Corn Salad will grow more freely the second year than the first; and Cucumbers, Melons and Squashes produce larger crops from seeds two years old than from the new, from the fact that they make less growth of vine and set their blossoms more freely.

Seeds of all kinds should be kept in a dry situation, and in sacks in preference to barrels.

Artichoke . . . . .	3 years	Corn . . . . .	2 years	Parsnip . . . . .	1 year
Asparagus . . . . .	4 "	Cress . . . . .	3 "	Peas . . . . .	2 "
Beans . . . . .	2 "	Cucumbers . . . . .	5 "	" Wrinkled . . . . .	1 "
Beet . . . . .	5 "	Egg Plant . . . . .	2 "	Pepper . . . . .	2 "
Borecole . . . . .	3 "	Endive . . . . .	2 "	Pumpkin . . . . .	4 "
Broccoli . . . . .	4 "	Kale . . . . .	3 "	Radish . . . . .	4 "
Brussels Sprouts . . . . .	3 "	Leek . . . . .	2 "	Rhubarb . . . . .	1 "
Cabbage . . . . .	4 "	Lettuce . . . . .	3 "	Salsify . . . . .	2 "
Carrot . . . . .	2 "	Melon . . . . .	5 "	Squash . . . . .	5 "
Cauliflower . . . . .	3 "	Mustard . . . . .	3 "	Spinach . . . . .	1 "
Celery . . . . .	3 "	Nasturtium . . . . .	5 "	Tomato . . . . .	2 "
Chervil . . . . .	2 "	Okra . . . . .	3 "	Turnip . . . . .	5 "
Collards . . . . .	4 "	Onion . . . . .	2 "		
Corn Salad . . . . .	3 "	Parsley . . . . .	3 "		

Dealers who obtain seeds from us can fully rely upon their always growing the second year, with the exception of Parsnip and Spinach, if properly kept; but it is best in all cases to test those varieties they have left over, which can be done very readily in small flower-pots or boxes.

# A WORD TO THE WISE



## OUTRIGHT SALE ONLY

We do not send out our seeds to be sold on commission and the balance to be returned

# But Look

at the difference in your profits. Ely's Seeds are sold to the Merchant in the varieties and quantities that HE SELECTS at

**\$10.00 PER THOUSAND PACKETS**  
OR ONE CENT PER PAPER

(not less than 500 packets at the thousand rate). They contain as much or more seed than those furnished "ON SALE" at \$50.00 PER THOUSAND WITH A COMMISSION OF 50 per cent. on those sold, which makes them cost the dealer \$25.00 per thousand or 2½ cents per paper.

### CONTRAST

#### ELY'S SEEDS

BOUGHT ON 4 MONTHS' CREDIT

**1000** Papers assorted Beet, Cabbage, Radish, Turnip, etc., selected by yourself to suit your own trade and section, **sold at 5 cts. each**

**Cost @ 1 cent each, \$10.00 \$50.00**

**PROFIT, \$40**

#### SEEDS ON SALE

Sold at 5 cents per paper, with 50 per cent. commission.

**1000** Papers assorted seeds, put up to meet a general call, sometimes unreliable, cost you 2½ cents per paper, **Sold at 5 cts. each**

**Net, \$25.00 \$50.00**

**PROFIT, \$25**

If necessary you could sell 600 papers of ELY'S SEEDS, throw away 400 papers, pay for the whole thousand, and still make more money than by the sale of 600 papers left on commission.

# PROOF

600 Papers of Ely's Seeds, sold at 5 cents, is . . . . \$30.00

Cost of 1000 papers of Ely's Seeds . . . . . 10.00

Profit, \$20.00

Commission of 2½ CENTS PER PAPER ON 600 PAPERS IS 15.00

Balance in favor of handling Ely's Seeds . . . . \$5.00

But it is not necessary to throw away Ely's Seeds, as *each season* every variety is put up from fresh, new and reliable tested seeds, and the average *vitality of Ely's Seeds in Packets* when they leave our warehouse is good for five years. A few, such as Parsnips, Spinach, Carrot are good for only one or two years; but Cabbage, Radish, Turnip, etc., are perfectly good for five or six years; while Beet, Melon, Cucumber and Squashes will grow well for from five to ten years.

*See list of vitality of seeds published in this catalogue.*

1024 MARKET STREET, PHILADELPHIA, PA.

# Z. DeForest Ely's Reliable Garden Seeds in Packets

"THEY HAVE FEW EQUALS AND NO SUPERIORS"

PURITY
RELIABILITY

Ely's New Early Jersey Wakefield

## CABBAGE



COURTESY

FIDELITY

**Z. DE FOREST ELY AND CO.**  
**SEED MERCHANTS**

PROMPTNESS

TRADE MARK

WE BELIEVE  
FAIR, HONEST  
DEALING  
THE ONLY BASIS  
FOR PERMANENT  
PROSPERITY

LIBERALITY

GARDEN GRASS AND FIELDSEEDS

AGRICULTURAL IMPLEMENTS AND TOOLS

1024 MARKET ST. PHILADELPHIA.

### TRADE OR HALF-QUANTITY PACKETS.

Embrace all leading varieties of vegetable seeds.

Price per 100 packets		\$1.25 or 15c. per doz.
" 1,000 "		10.00 " 12c. "
" 3,000 "		9.00 per 1000
" 5,000 "		8.00 "
" 10,000 "		7.00 "
" 25,000 "		6.50 "

These contain just half as much seed as the double-quantity packets. Each dozen packets of a kind neatly wrapped.

### WHOLE OR DOUBLE-QUANTITY PACKETS.

One dozen packets of a kind are put in a package, neatly wrapped.

Price per 100 packets		\$2.00 or 24c. per doz.
" 1,000 "		19.00 per 1000
" 3,000 "		18.00 "
" 5,000 "		17.00 "
" 10,000 "		16.00 "
" 25,000 "		15.00 "

Not less than 500 papers sold at the 1000 price. Our whole-quantity packets are in chromo-lithographed bags, and are the most attractive seeds on the market. One-third pint cartons of all Peas, Beans and Corn, beautifully illustrated, \$5.00 per 100; retail at 10 cents each.

1024 MARKET STREET, PHILADELPHIA, PA.



# ELY'S GARDEN SEEDS IN PAPERS

CONTAIN THE FOLLOWING QUANTITY OF SEEDS EXCLUSIVE OF THE WEIGHT OF THE BAGS USED:

On Paper Seed Orders booked with us on or before December 1st of each year, IF DESIRED AND SO STATED WITH ORDER, each paper will be stamped with the date of year of issue, and either Trade Packet or Double-Quantity Packet, according to its contents.

This inspires confidence and trust in Ely's Seeds, and requires us to put up in papers only absolutely new and fresh seeds.

Expensive sorts and rare seeds marked † will be put up only in Double-Quantity Packets. Novelties of great value will be specially gauged in accordance with their cost. *Test the seeds you are selling.*

**General Size,** or **B.,** bags (size  $4\frac{3}{8} \times 2\frac{7}{8}$ ), weigh  $\frac{1}{2}$  oz., . . . per doz.  
**Long Size,** or **C.,** " ( "  $5\frac{3}{8} \times 1\frac{1}{2}$ ), "  $\frac{1}{2}$  oz. strong, "  
**Peas, Beans and Corn, D.,** " ( "  $5\frac{1}{4} \times 5\frac{7}{8}$ ), "  $\frac{3}{4}$  oz., . . . "

	Trade Packets or Half Quantity contain each	Whole Packets or Double Quantity contain each
Asparagus . . . . .	$\frac{1}{4}$ oz.	$\frac{1}{2}$ oz.
† Broccoli . . . . .		$\frac{1}{10}$ "
Brussels Sprouts . . . . .	$\frac{1}{12}$ "	$\frac{1}{6}$ "
Beets . . . . .	$\frac{1}{4}$ "	$\frac{1}{2}$ "
Beans—Dwarf Varieties—		
Green Pod Sorts . . . . .	$1\frac{1}{2}$ "	3 "
Wax Pod Sorts . . . . .	1 "	2 "
Beans—Pole Varieties—		
Green Pod Sorts . . . . .	1 "	2 "
Wax Pod Sorts . . . . .	1 "	2 "
Cabbages . . . . .	$\frac{1}{10}$ "	$\frac{1}{5}$ "
Carrot . . . . .	$\frac{1}{6}$ "	$\frac{1}{3}$ "
† Cauliflower—		
Snowball and Erfurt . . . . .		$\frac{1}{30}$ "
Other Varieties . . . . .		$\frac{1}{15}$ "
Celery—		
For Growing . . . . .	$\frac{1}{8}$ "	$\frac{1}{4}$ "
For Flavoring . . . . .	$\frac{1}{2}$ "	$\frac{1}{2}$ "
Collards . . . . .	$\frac{1}{8}$ "	$\frac{1}{4}$ "
Corn Salad . . . . .	$\frac{1}{6}$ "	$\frac{1}{3}$ "
Cress, Curled . . . . .	$\frac{1}{4}$ "	$\frac{1}{2}$ "
Corn—		
Sugar Varieties . . . . .	$1\frac{1}{2}$ "	3 "
Field . . . . .	$1\frac{1}{2}$ "	3 "
Cucumbers . . . . .	$\frac{1}{6}$ "	$\frac{1}{3}$ "
Egg Plant . . . . .	$\frac{1}{30}$ "	$\frac{1}{15}$ "
Endive . . . . .	$\frac{1}{10}$ "	$\frac{1}{5}$ "
Kale or Borecole . . . . .	$\frac{1}{6}$ "	$\frac{1}{3}$ "
Kohl-Rabi . . . . .	$\frac{1}{15}$ "	$\frac{1}{3}$ "

	Trade Packets or Half Quantity contain each	Whole Packets or Double Quantity contain each
Lettuce . . . . .	$\frac{1}{8}$ oz.	$\frac{1}{4}$ oz.
Leek . . . . .	$\frac{1}{8}$ "	$\frac{1}{4}$ "
Mustard—		
Black or Brown . . . . .	$\frac{1}{4}$ "	$\frac{1}{2}$ "
Creole . . . . .	$\frac{1}{8}$ "	$\frac{1}{4}$ "
Melons—Water . . . . .	$\frac{1}{4}$ "	$\frac{1}{2}$ "
Melons—Musk . . . . .	$\frac{1}{4}$ "	$\frac{1}{2}$ "
Okra . . . . .	$\frac{1}{4}$ "	$\frac{1}{2}$ "
Onion Seed—		
White Varieties . . . . .	$\frac{1}{20}$ "	$\frac{1}{10}$ "
Yellow " . . . . .	$\frac{1}{10}$ "	$\frac{1}{5}$ "
Red " . . . . .	$\frac{1}{10}$ "	$\frac{1}{5}$ "
Parsley . . . . .	$\frac{1}{6}$ "	$\frac{1}{3}$ "
Parsnip . . . . .	$\frac{1}{4}$ "	$\frac{1}{2}$ "
Pepper . . . . .	$\frac{1}{20}$ "	$\frac{1}{10}$ "
Pumpkin . . . . .	$\frac{1}{6}$ "	$\frac{1}{3}$ "
Peas—		
Smooth Varieties . . . . .	$1\frac{1}{2}$ "	3 "
Wrinkled " . . . . .	1 "	2 "
Radish . . . . .	$\frac{1}{6}$ "	$\frac{1}{3}$ "
Salsify . . . . .	$\frac{1}{8}$ "	$\frac{1}{4}$ "
Squash . . . . .	$\frac{1}{6}$ "	$\frac{1}{3}$ "
Spinach . . . . .	$\frac{1}{4}$ "	$\frac{1}{2}$ "
Tomato . . . . .	$\frac{1}{16}$ "	$\frac{1}{8}$ "
Turnip—		
White Varieties . . . . .	$\frac{1}{4}$ "	$\frac{1}{2}$ "
Yellow " . . . . .	$\frac{1}{4}$ "	$\frac{1}{2}$ "
Ruta Baga " . . . . .	$\frac{1}{4}$ "	$\frac{1}{2}$ "
Long Island Ruta Baga . . . . .	$\frac{1}{6}$ "	$\frac{1}{3}$ "

Square Cartons, containing  $\frac{1}{2}$  pint each, all varieties of Peas and Beans, \$5.00 per 100, in assorted orders.

Square Cartons, containing 1 pint each, all varieties of Peas and Beans, \$10.00 per 100, in assorted orders.



# What Shall I Order?



For the benefit of those who are just starting selling seeds, our Mr. Ely, who personally traveled for many years from the Gulf of Mexico all the way to Canada, gives the following suggestions and sample orders; you can alter them to suit your wants where desired:—

## An Order of 1,200 Papers Ely's Reliable Garden Seeds

Sold for only \$12.00, enabling you to meet all calls, and assorted to give most salable varieties, and in proportions as usually called for.

	No. Papers		No. Papers
<b>Beets—Turnip-rooted</b> , assorted, Ely's Extra		Brought forward . . . . .	684
Early, Ely's Dark Blood, and Eclipse	36	<b>Okra—Ely's Dwarf White</b>	12
<b>Long Blood</b> , Ely's Improved . . . . .	12	<b>Watermelons</b> —assorted, Kolb Gem, Jumbo,	
<b>Red Mangel</b> , Ely's Mammoth . . . . .	12	Icing, Kentucky Wonder . . . . .	48
<b>Cabbages—Early</b> , assorted, York, Wimmig-		<b>Muskmelons</b> —assorted, Acme, Nutmeg, Miller's	
stadt, and Ely's Selected Wakefield . . . . .	72	Cream, Champion Market . . . . .	48
<b>Medium</b> , assorted, All Seasons, Succes-		<b>Onion Seed</b> —Prize Taker, Silver King, White,	
sion, and Early Summer . . . . .	72	Red, and Yellow . . . . .	60
<b>Late</b> , assorted, Ely's Improved Flat		<b>Parsley</b> —Ely's Market Garden . . . . .	12
Dutch and Drumhead . . . . .	144	<b>Parsnip</b> —Ely's Selected Hollow Crown . . . . .	12
<b>Carrot</b> —Ely's Long Orange and Half Long . . . . .	24	<b>Pumpkin</b> —assorted, Cashaw, Cheese, and Ten-	
<b>Cauliflower</b> —Ely's Best . . . . .	12	nessee Sweet Potato . . . . .	36
<b>Celery—Mammoth White Solid</b> , White		<b>Peppers</b> —assorted, Bell and Red Cayenne . . . . .	24
Plume and Perfection . . . . .	36	<b>Radish</b> —assorted, Long Scarlet, Scarlet Turnip,	
<b>Cucumber</b> —assorted, Ely's White Spine and		White Box, Charter, White Tip Scarlet	
Long Green . . . . .	72	Turnip . . . . .	60
<b>Collards—(omit this North)</b> . . . . .	60	<b>Salsify</b> —Ely's Mammoth . . . . .	12
<b>Corn Salad</b> —Large Seeded . . . . .	12	<b>Spinach</b> —Bloomsdale . . . . .	12
<b>Egg Plant</b> —Ely's Improved . . . . .	12	<b>Squash</b> —White Bush, Summer Crook Neck,	
<b>Endive</b> —Green Curled . . . . .	12	and Perfect Gem . . . . .	36
<b>Kale</b> —Norfolk or Dwarf Curled . . . . .	12	<b>Tomato</b> —Livingston Perfection, New Stone,	
<b>Kohl-Rabi</b> —White Vienna . . . . .	12	Acme, Paragon, and Dwarf Champion, . . . . .	60
<b>Lettuce</b> —assorted, White Butter, Prize Head,		<b>Turnip</b> —Red Top, White Flat, White Globe,	
Curled Simpson, and Tennis Ball . . . . .	48	Red Top Globe, White Egg, Aber-	
<b>Leek</b> —American Flag . . . . .	12	deen, Ely's Improved Ruta Baga . . . . .	84
<b>Mustard</b> —Curled Southern . . . . .	12		1,200
		Carried forward . . . . .	684

**1,200 Papers, or 100 Dozen, sold for only \$12.00**

This assortment embraces no Peas, Beans or Corn; we put them up in same style and at same price, if desired, but the best way to handle them is in our beautifully illustrated 1-3 pint packages, which cost you \$5.00 per 100, and retail for 10c. each, or to buy in bulk by the bushel. A sample order of 1-3 pint packages of the best and most salable varieties of

## PEAS, BEANS AND CORN

	No. 1/3-pint Packages
<b>PEAS</b> —Ely's Best Extra Early, Alaska, Gems, Champion of England, Eugenie, Marrowfat . . . . .	90
<b>BEANS</b> —Ely's Extra Early Valentine, Yellow Six Weeks, Best of All, Mohawk, Bush Lima, Ely's Golden Beauty Wax, Dwarf German Wax, Lazy Wife Pole, Carolina, Southern Prolific . . . . .	70
<b>CORN</b> —Evergreen (True Sugar), Mammoth Sugar, Crosby's Early, and Adam's Early . . . . .	40
	200

**200 @ \$5.00 or \$10.00**, making, with the 1,200 papers named above, the most complete assortment of the best seeds ever offered, the retail value of which is \$80.00, which will cost you only \$22.00. Will present you with a sample show-case, free, with first order of \$22.00, as herein described.

The following items also find ready sale: **ELY'S MIXED BIRD FOOD**, in 1-lb. boxes; **ONION SETS AND SEED POTATOES**, in bulk; **ELY'S MIXED LAWN GRASS**, in pint and quart boxes; **FLOWER SEEDS, ETC.**

**Z. DEFOREST ELY & Co.**  
SEED GROWERS

P. O. BOX 1176  
CABLE ADDRESS, DEFOREST, PHILA.

1024 MARKET ST., PHILADELPHIA, PA.

1024 MARKET STREET, PHILADELPHIA, PA.

**ASPARAGUS SEEDS.**

	Tel. Cipher.	10 lbs. or over.	Per lb.
Columbian Mammoth (white, new) . . . . .	<b>Allayo</b>		\$1.00
Palmetto . . . . .	<b>Alter</b>	\$0.30	.35
Phila. Mammoth (Barr's) . . . . .	<b>Albert</b>	.30	.35
Conover's Colossal . . . . .	<b>Allay</b>	.15	.20

**ASPARAGUS ROOTS.**

Palmetto, 2 years old . . . . .	<b>Albany</b>	4.00	per 1000.
Colossal, 2 years old . . . . .	<b>Action</b>	3.50	"
Barr's Mammoth, 2 years old . . . . .	<b>Actionless</b>	3.50	"

**ARTICHOKE.**

		Per lb.
Green Globe . . . . .	<b>Anchor</b>	\$3.00
Jerusalem (roots), per bush., \$2.00 . . . . .	<b>Anvil</b>	

**BEEF.—Turnip-rooted Varieties.**

	Tel. Cipher.	10 lbs.	Per lb.
<b>Ely's Extra Early Turnip</b> . . . . .	<b>Basalt</b>	\$0.35	\$0.40
<b>Ely's Early Dark Blood Turnip</b> . . . . .	<b>Barnett</b>	.30	.35
<b>Eclipse</b> . . . . .	<b>Becil</b>	.35	.40
Extra Early Turnip, or Bassano . . . . .	<b>Barb</b>	.30	.35
Early Red Turnip . . . . .	<b>Barber</b>	.25	.30
Dewing's Early Red Turnip . . . . .	<b>Barry</b>	.25	.30
Bastian's Extra Early Red Turnip . . . . .	<b>Basco</b>	.30	.35
Lentz's Extra Early Red Turnip (true) . . . . .	<b>Base</b>	.30	.35
Early Egyptian Red Turnip . . . . .	<b>Basent</b>	.35	.40
Edmand's Early Turnip . . . . .	<b>Becow</b>	.30	.35
<b>Surprise</b> . . . . .	<b>Bernstock</b>	.35	.40
<b>Columbia</b> . . . . .	<b>Bertel</b>	.35	.40
Swiss Chard Beet . . . . .	<b>Bascom</b>	.30	.35

**Long Varieties.**

<b>Ely's Improved Long Blood</b> . . . . .	<b>Bath</b>	.25	.30
Bastian's Half Long Blood . . . . .	<b>Bates</b>	.30	.35

**Stock-feeding Varieties.**

<b>Ely's Mammoth Long Red Mangel</b> . . . . .	<b>Bean</b>	.25	.30
Long Red Mangel . . . . .	<b>Begot</b>	.20	.25
White French Sugar . . . . .	<b>Battle</b>	.20	.25
Lane's Imperial Sugar . . . . .	<b>Baton</b>	.20	.25
Orange Globe Mangel . . . . .	<b>Bay</b>	.20	.25
Golden Intermediate Mangel . . . . .	<b>Bey</b>	.20	.25
Golden Tankard . . . . .	<b>Basis</b>	.20	.25
Golden Globe Mangel . . . . .	<b>Beach</b>	.20	.25





## BURPEE'S BUSH LIMA BEANS.

## DWARF, BUSH OR SNAP-SHORT BEANS

	Tel. Cipher.	10 Bush.	Per Bush.
Ely's "Golden Beauty" Wax . . . . .	Bunker . . . . .	\$3.75	\$4.00
Ely's Improved Golden Wax (rust proof) . . . . .	Balm . . . . .	4.00	4.25
Ely's Prolific Dwarf German Wax . . . . .	Babel . . . . .	4.25	4.50
Dwarf German Wax (selected) . . . . .	Bald . . . . .	3.75	4.00
Currie's Rust-proof Wax . . . . .	Baffle . . . . .	4.25	4.50
Bismarck Black Wax or Golden Butter . . . . .	Backbite . . . . .	4.25	4.50
Wardwell's Kidney Wax . . . . .	Butter . . . . .	5.00	5.25
Golden Wax . . . . .	Bacon . . . . .	3.75	4.00
Scarlet Flageolet Wax . . . . .	Bados . . . . .	4.50	5.00
Golden Eyed Wax . . . . .	Babe . . . . .	3.75	4.00
Dwarf White Wax . . . . .	Barat . . . . .	4.25	4.50
Refugee Wax (Thorburn's) . . . . .	Backslide . . . . .	4.25	4.50
Yosemite Mammoth Wax . . . . .	Backward . . . . .	6.75	7.00
Crystal Wax . . . . .	Bagpipe . . . . .	4.25	4.50
Ivory Pod Wax . . . . .	Bairn . . . . .	4.25	4.50
Ely's Best-of-All (green pods) . . . . .	Bedim . . . . .	3.50	3.75
Improved Red Valentine . . . . .	Baino . . . . .	2.75	3.00
Ely's Extra Early Valentine (sealed) . . . . .	Bare . . . . .	3.00	3.25
Early Mohawk (six weeks) . . . . .	Bala . . . . .	2.75	3.00
Early Long Yellow (six weeks) . . . . .	Balch . . . . .	2.75	3.00
Refugee (1,000 to 1) . . . . .	Bad . . . . .	2.75	3.00
Extra Early Refugee (Thorburn's) . . . . .	Baldpate . . . . .	3.00	3.25
Dwarf Horticultural . . . . .	Bailiff . . . . .	2.90	3.00
China Red Eye . . . . .	Bann . . . . .	2.90	3.00
White Kidney . . . . .	Ball . . . . .	2.90	3.00
Red Kidney . . . . .	Bathe . . . . .	2.90	3.00
White Valentine . . . . .	Barbic . . . . .	3.50	3.75
White Navy . . . . .	Bark . . . . .	2.90	3.00
White Marrow . . . . .	Baron . . . . .	2.90	3.00

## BUSH LIMA BEANS.

Henderson's Bush Lima . . . . .	Beudon . . . . .	6.00	6.50
Burpee's Bush Lima . . . . .	Baluster . . . . .	8.50	9.00

☞ We want at least *one good agent* in every town for *Ely's Packet Seeds* and we will *win for him the best trade*, because of superior excellence of quality and liberality of quantity of seeds in our packets, and help him keep the trade of his customers *at home*. Our Seed Catalogue, with your name on, which we furnish free with Ely's Seeds, will do this. Write for a sample copy.



CROSSCUP &amp; WEST, ENL. CO. PHILA.

## Ely's Improved Rust- Proof Golden Wax Bean

Is one of the best. It has taken the place, with us, of the old Golden Wax. It and the Golden-Eyed Wax are the best Wax Beans for trucking purposes.

### POLE BEANS.

	Tel. Cipher.	10 Bush.	Per Bush.
Golden Flageolet Wax	<b>Bandy</b>	\$6.00	\$6.50
Golden Cluster Wax (Dreer's)	<b>Baltic</b>	6.50	7.00
Golden Butter Wax	<b>Beat</b>	5.50	6.00
German or Black Wax Pole	<b>Bias</b>	5.50	6.00
Giant Wax, Red Seed	<b>Birch</b>	5.75	6.00
<b>Willow Leaf Lima</b>	<b>Bachelor</b>	6.50	7.00
<b>Lazy Wife's Pole Bean</b>	<b>Bamber</b>	6.50	7.00
Golden Andalusia	<b>Bemar</b>	6.00	6.50
King of the Garden Lima	<b>Barol</b>	5.75	6.00
Jersey Extra Early Lima	<b>Bersy</b>	6.25	6.50
<b>Large Lima (Salem Mammoth)</b>	<b>Bed</b>	6.25	6.50
Large Lima White (first size)	<b>Brock</b>	5.50	6.00
Large Lima (good stock)	<b>Baffle</b>	5.25	5.50
Dreer's Improved Lima	<b>Berry</b>	5.25	5.50
<b>Small Lima, or Carolina</b>	<b>Bee</b>	5.50	6.00
White Dutch, or Runner	<b>Bet</b>	4.00	4.25
Horticultural, or Wren's Egg	<b>Bevy</b>	4.50	4.75
Dutch Case Knife	<b>Bili</b>	4.50	4.75
<b>Southern Prolific</b>	<b>Bit</b>	4.50	4.75
Scarlet Runner	<b>Bless</b>	4.25	4.50
<b>Fat Horse, or Crease-Back</b>	<b>Bud</b>	5.25	5.50
Kentucky Wonder (Old Homestead)	<b>Borgue</b>	5.50	5.75
Cut Short, Red Speckled	<b>Bandon</b>	5.50	5.75

Sealed packages of Beans, containing  $\frac{1}{2}$  pint each, \$5.00 per 100.  
Sealed packages of Beans, containing 1 pint each, \$10.00 per 100.

1024 MARKET STREET, PHILADELPHIA, PA.

<b>BROCCOLI.</b>	Tel. Cipher.	10 lbs.	Per lb.
Early Purple Cape . . . . .	<b>Brook</b> . . . . .	\$2.00	\$2.25
Walcheren . . . . .	<b>Brookton</b> . . . . .	3.00	3.25
White Cape . . . . .	<b>Broken</b> . . . . .	3.00	3.25
<b>BRUSSELS SPROUTS.</b> . . . . .	<b>Bagpipe</b> . . . . .	1.25	1.50
<b>BORECOLE</b> (See Kale).			

## *ELY'S IMPROVED CABBAGE SEED*

### *THE BEST IN THE WORLD*

We have long enjoyed an enviable reputation for the good quality of the seeds sold by us, and by special care and attention to the selection of our crops, we have secured seeds of such excellence that we know them to be unsurpassed by any other. These, in many instances, are so superior and distinct as to be well worthy of new names to designate them, but we prefer, however, to reduce the number of names rather than multiply them, and attach simply our own name to the old and well-known one. **THIS MEANS, WITH US, IN ALL CASES A SPECIAL STOCK,** that has been grown especially for us under personal supervision and selection, and believed by us to be superior to the ordinary type. If our customers could take a trip of inspection and visit the fields of cabbage growing for seed, they would realize how important it is that they get good seed. A grower of cabbage for market would rather pay \$10 per pound for good seed than \$1 for that which is inferior. But this is not a good reason for charging exorbitant prices at either retail or wholesale. Many crops of cabbage seed are sold that have been grown without any selection as to type or quality. Such seed is a serious loss and wrong to a market gardener, as an investment by him of a few dollars represents, many times, several hundred dollars worth of cabbage, besides the value of his labor and the rent of his land. Our aim is to sell good seeds at the lowest market price, and our facilities are such that we can meet all honest, legitimate competitors, but poor seeds at any price shall never knowingly go out from our house.



**A Field of Ely's Improved Late Flat Dutch Cabbage.**

We recommend this strain as the finest, largest and most hard-heading cabbage known.

1024 MARKET STREET, PHILADELPHIA, PA.



Ely's Extra Early Jersey Wakefield.

A wonder for earliness and uniformity of heading. Tested side by side with *Everybody's Earliest* it has no superior, while none as early compare with it in size and weight.

**Write for Special Offer** on large lots; we carry a stock of from 500 to 5,000 pounds of each variety quoted, all of our own growing.

**CABBAGE.**

We defy competition; **there is no finer Cabbage Seed in the world than those quoted here.**

	Tel. Cipher.	10 lbs. or more	Per lb.
Early Jersey Wakefield (good Long Island)	<b>Cork</b>	1.00	1.25
<b>Ely's Extra Early Jersey Wakefield</b> (earliest)	<b>Corinth</b>	1.50	1.75
<b>Early Large Jersey Wakefield</b> or Charleston	<b>Corning</b>	1.50	1.75
<b>Ely's Selected Jersey Wakefield</b> (our best, for earliness and size combined)	<b>Calf</b>	1.50	1.75
Ely's Early Large York	<b>Cairo</b>	.90	1.00
Express or "Earliest," Etampes	<b>Chaste</b>	1.25	1.50
Early Winnigstadt, French	<b>Cale</b>	1.25	1.50
<b>Ely's Improved Early Flat Dutch</b>	<b>Calico</b>	1.25	1.50
<b>Ely's Improved Early Drumhead</b>	<b>Call</b>	1.25	1.50
Early Dwarf Flat Dutch (Stein's)	<b>Cornwall</b>	1.25	1.50
Improved Early Summer (Henderson's)	<b>Calet</b>	1.00	1.25
Premium Large Late Flat Dutch	<b>Comet</b>	.90	1.00
Premium Large Late Drumhead	<b>Client</b>	.90	1.00
<b>Ely's Improved Late Flat Dutch</b>	<b>Caleb</b>	1.25	1.50
<b>Ely's Improved Late Drumhead</b>	<b>Calais</b>	1.25	1.50
<b>Ely's Extra Large Late Flat Dutch</b> (Market Gardener's Private Stock)	<b>Catosi</b>	1.50	1.75
<b>Ely's Extra Large Late Drumhead</b>	<b>Cajole</b>	1.50	1.75
Short Stem Drumhead	<b>Cadence</b>	1.25	1.50
<b>Frotscher's Superior Flat Dutch</b>	<b>Cadet</b>	1.75	2.00
<b>Brunswick Drumhead</b> (Benary's best)	<b>Canal</b>	1.25	1.50
Fotter's Brunswick (American)	<b>Cornet</b>	1.25	1.50
Sure Head	<b>Cheek</b>	1.25	1.50
World Beater	<b>Calcine</b>	1.25	1.50
Louisville Drumhead	<b>Cane</b>	1.25	1.50
Marblehead Mammoth	<b>Canton</b>	1.25	1.50
North Carolina Buncombe	<b>Crawley</b>	1.25	1.50
<b>All Seasons</b>	<b>Coro</b>	1.00	1.25
Vandegaw's Quick Growing	<b>Candid</b>	1.00	1.25
<b>Succession</b> (Henderson's)	<b>Calero</b>	1.00	1.25
<b>Solid South</b>	<b>Canoe</b>	1.25	1.50
Green Glazed	<b>Carey</b>	1.25	1.50
Red Dutch (for pickling)	<b>Carson</b>	1.00	1.25

**CABBAGE, SAVOY.**

Green Curled Savoy	<b>Cart</b>	.75	1.00
Green Globe Savoy	<b>Caslo</b>	.75	1.00
American Drumhead Savoy	<b>Cato</b>	1.25	1.50

## ELY'S CELEBRATED CABBAGE

Ely's Cabbage Seeds are all **personally selected**, and grown with the greatest care. There are no seeds that are more reliable or will give more satisfactory returns to all who plant them.



A Field of Ely's Early Jersey Wakefield Cabbage. (Photograph.)

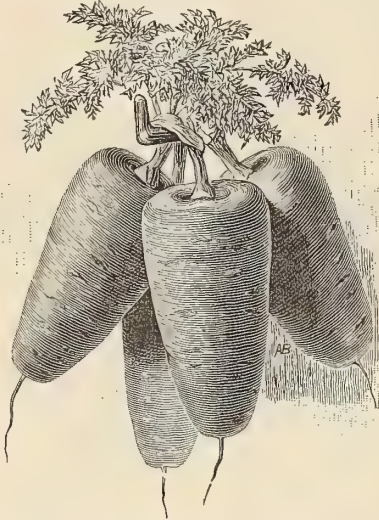
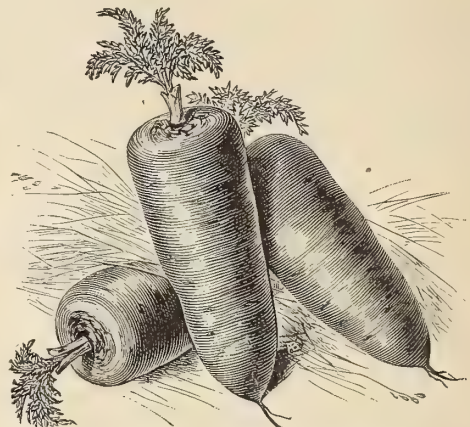


Succession Cabbage.

The above is a *trade wood-cut*, but I saw a field of Succession Cabbage grown on contract for us by **Farmer Woodhull**, that was headed up so uniformly as to be an **honest** representative of this picture.—Z. DeForest Ely.

**CARROT.**

	Tel. Cipher.	10 lbs. or more	Per lb.
<b>Ely's Improved Long Orange</b> . . . . .	<b>Cerro</b> . . . . .	\$0.50	\$0.55
St. Vallery, Long Red . . . . .	<b>Covenant</b> . . . . .	.50	.55
Long Orange . . . . .	<b>Cerron</b> . . . . .	.45	.50
James' Intermediate (pointed root) . . . . .	<b>Covry</b> . . . . .	.50	.55
<b>Chantenay, Half-Long Scarlet (stump root)</b> . . . . .	<b>Clides</b> . . . . .	.50	.55
<b>Danvers Half-Long (selected)</b> . . . . .	<b>Coventry</b> . . . . .	.50	.55
Early Half-Long Scarlet (stump rooted) . . . . .	<b>Cawsaw</b> . . . . .	.50	.55
English Horn or Early Half-Long Scarlet (pointed root) . . . . .	<b>Caw</b> . . . . .	.50	.55
Nantes, Early Half-Long Scarlet, Large Stump Root . . . . .	<b>Cant</b> . . . . .	.50	.55
Oxheart or Guerande Half-Long (stump rooted) . . . . .	<b>Cannell</b> . . . . .	.50	.60
Carentan, Extra Early Half-Long Scarlet (forcing) . . . . .	<b>Clidom</b> . . . . .	.50	.55
Early Scarlet Horn (forcing, stump root) . . . . .	<b>Cave</b> . . . . .	.50	.55
Parisian Forcing Round Red . . . . .	<b>Canonist</b> . . . . .	.55	.60
Scarlet Altringham . . . . .	<b>Chain</b> . . . . .	.45	.50
Large White Belgian . . . . .	<b>Chair</b> . . . . .	.30	.35
Yellow Belgian . . . . .	<b>Chyle</b> . . . . .	.35	.40

**Chantenay Half-Long Scarlet Carrot.****Danvers Half-Long Carrot.****CAULIFLOWER.**

	Tel. Cipher.	10 lbs. or more.	Per lb.
<b>Ely's Best</b> , per oz., \$2.00 . . . . .	<b>Clermont</b> . . . . .		\$25.00
<b>Early Snowball</b> , Gilt Edge . . . . .	<b>Chalk</b> . . . . .		20.00
<b>Erfurt Earliest Dwarf</b> , per oz. \$2.00 . . . . .	<b>Coheir</b> . . . . .		25.00
Early Erfurt (German Grown) . . . . .	<b>Chaste</b> . . . . .		9.00
Early Erfurt (California grown) . . . . .	<b>Capapie</b> . . . . .		6.00
Extra Early Paris . . . . .	<b>Chapel</b> . . . . .		7.00
Veitches' Autumn Giant . . . . .	<b>Chum</b> . . . . .		3.00
Le Normand Short Stem . . . . .	<b>Churn</b> . . . . .		6.00
Early London . . . . .	<b>Casulist</b> . . . . .		3.00
Algiers . . . . .	<b>Cay</b> . . . . .		6.00

**COLLARDS.**

Georgia Selected . . . . .	<b>Columbus</b> . . . . .	\$0.50	.55
Southern Collards . . . . .	<b>Crux</b> . . . . .	.45	.50

<b>CHERVIL</b> (curled) . . . . .	<b>Cowper</b> . . . . .	.60	.75
-----------------------------------	-------------------------	-----	-----

<b>CHICORY</b> . . . . .	<b>Cox</b> . . . . .	.75	1.00
--------------------------	----------------------	-----	------

<b>CORN SALAD</b> . . . . .	<b>Crap</b> . . . . .	.35	.40
-----------------------------	-----------------------	-----	-----



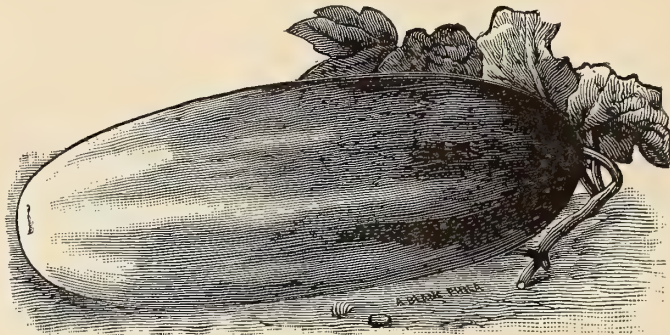


**CELERY.**

	Tel. Cipher.	10 lbs.	Per lb.
Ely's Mammoth White Solid . . . . .	Cicero . . . . .	1.00	1.25
White Plume . . . . .	Choler . . . . .	1.75	2.00
Golden Self-Blanching . . . . .	Clay . . . . .	2.50	2.75
Golden Heart, very fine . . . . .	City . . . . .	1.25	1.50
Heartwell's Perfection . . . . .	Capon . . . . .	1.25	1.50
Boston Market . . . . .	Coffee . . . . .	1.00	1.25
Giant Pascal . . . . .	Colomar . . . . .	1.00	1.25
Soup, or Flavoring (\$15.00 per 100 lbs.) . . . . .	Coal . . . . .	.18	.20
Celeriac, or Turnip-rooted Celery . . . . .	Coffin . . . . .	1.00	1.25

**CRESS.**

Curled, or Pepper Grass . . . . .	Crook . . . . .	.20	.25
Water Cress (true) . . . . .	Cros . . . . .		4.00
Winter (gray seed) . . . . .	Crown . . . . .	.40	.45



Ely's Improved White Spine.

**CUCUMBER.**

	Tel. Cipher.	10 lbs.	Per lb.
Ely's Jersey Pickle, Special Stock . . . . .	Crucify . . . . .	.35	.40
Ely's Improved Long Green . . . . .	Constant . . . . .	.35	.40
Long Green Turkey . . . . .	Conrad . . . . .	.35	.40
Ely's Improved White Spine . . . . .	Congress . . . . .	.35	.40
Peerless, or Perfection White Spine . . . . .	Conklin . . . . .	.30	.35
Nichol's Medium Green . . . . .	Curse . . . . .	.30	.35
Arlington White Spine . . . . .	Cuckoo . . . . .	.28	.30
Extra Long White Spine . . . . .	Cloop . . . . .	.35	.40
Evergreen White Spine . . . . .	Cringe . . . . .	.35	.40
Florida Emerald (smooth, dark green) . . . . .	Cubit . . . . .	.35	.40
White Pearl . . . . .	Cuddle . . . . .	.55	.60
Thorburn's New Commercial . . . . .	Cudgel . . . . .	.35	.40
Westerfield's Chicago Pickling . . . . .	Cuirass . . . . .	.35	.40
Boston Pickling . . . . .	Cullender . . . . .	.35	.40
Giant Pera . . . . .	Curve . . . . .	.40	.45
Everbearing . . . . .	Cobar . . . . .	.35	.40
Early Frame . . . . .	Connell . . . . .	.30	.35
Early Cluster . . . . .	Conover . . . . .	.30	.35
Early Russian . . . . .	Conquest . . . . .	.30	.35
Green Prolific . . . . .	Carey . . . . .	.30	.35
Early Short Green . . . . .	Convent . . . . .	.30	.35
Gherkin . . . . .	Cook . . . . .	.75	.80
Japan Climbing (per oz. 30 cts.) . . . . .	Connot . . . . .		

**EGG PLANT.**

Ely's Improved New York Purple . . . . .	Earl . . . . .	3.00	3.50
New York Improved . . . . .	Ermin . . . . .	2.50	2.75
Thornless Stem . . . . .	Exco . . . . .	3.25	3.50

**ENDIVE.**

Green Curled . . . . .	Egypt . . . . .	.75	1.00
White Curled . . . . .	Elba . . . . .	.75	1.00
Moss Curled . . . . .	Entrap . . . . .	.75	1.00
Broad Leaved Batavia . . . . .	Entwine . . . . .	.75	1.00



**LETTUCE.**

	Tel. Cipher.	10 lbs.	Per lb.
Ely's White Butter or Cabbage (cold frame), W. S.	<b>Learn</b>	\$0.75	\$1.00
Ely's Early Dutch Butter Speckled, W. S.	<b>Latin</b>	.75	1.00
California Cream Butter, W. S.	<b>Lacerate</b>	.60	.75
St. Louis Butter, W. S.	<b>Lagoon</b>	.60	.75
Early Prize Head, W. S.	<b>Lank</b>	.50	.60
Salamander, B. S.	<b>Lovely</b>	.60	.65
Silver Ball, W. S.	<b>Lall</b>	.60	.75
The Deacon, W. S.	<b>Lacon</b>	.60	.75
Hubbard's Market (forcing or outside), W. S.	<b>Lacket</b>	.60	.75
Denver Market, W. S.	<b>Larkney</b>	.60	.65
Grand Rapids, B. S.	<b>Laconic</b>	.55	.60
Oak Leaf, W. S.	<b>Lacteal</b>	.55	.60
Buttercup (for forcing), W. S.	<b>Landau</b>	.60	.75
Early Curled Silesia, W. S.	<b>Lean</b>	.50	.60
Early Curled Simpson, W. S.	<b>Leap</b>	.50	.60
Curled Simpson, B. S.	<b>Lanta</b>	.50	.60
Early Hanson, W. S.	<b>Lump</b>	.50	.60
Early Tennisball, B. S.	<b>Letter</b>	.50	.65
Early Boston, or White Seed Tennisball	<b>Lazy</b>	.55	.60
Hard Head, W. S.	<b>Lard</b>	.60	.70
Blonde Blockhead, or Sunset, W. S.	<b>Lardan</b>	.60	.75
Improved Royal Cabbage, W. S.	<b>Like</b>	.60	.75
Royal Cabbage, B. S.	<b>Lager</b>	.60	.75
Drumhead Cabbage, W. S.	<b>Lamp</b>	.50	.60
Brown Dutch, B. S.	<b>Larry</b>	.55	.60
Perpignan, or Early Summer, W. S.	<b>Lip</b>	.70	.75
India Curled, W. S.	<b>Lizzie</b>	.55	.60
White Paris Cos, W. S.	<b>Link</b>	.60	.70
Ice Head, W. S.	<b>Lave</b>	.55	.60
Passion, B. S.	<b>Lucky</b>	.55	.60
Gray or Yellow Seeded Butter	<b>Languid</b>	.60	.70



California Cream Butter Lettuce.

**LEEK.**

		10 lbs.	Per lb.
Ely's Mammoth Flag (American)	<b>Larkin</b>	\$1.25	\$1.50
London Flag	<b>Lark</b>	.90	1.00
Carrantan	<b>Leon</b>	1.10	1.25
Musselburgh	<b>Lepto</b>	1.10	1.25

**MELONS.—(Cantaloupe)**

	Tel. Cipher.	10 lbs.	Per lb.
New Orleans Market (Frotscher)	<b>Mine</b>	\$0.90	\$1.00
Miller's Cream or Osage	<b>Mention</b>	.40	.45
Champion Market	<b>Madian</b>	.35	.40
Baltimore Rough, or Acme	<b>Mute</b>	.35	.40
Emerald Gem	<b>Meral</b>	.40	.45
Hackensack, or Turk's Cap	<b>Muter</b>	.35	.40
Extra Early Hackensack	<b>Manes</b>	.30	.35
Montreal Nutmeg	<b>Marig</b>	.35	.40
Golden Netted Gem	<b>Malva</b>	.35	.40
Netted Green Citron	<b>Madia</b>	.35	.40
Netted Nutmeg	<b>Media</b>	.35	.40
Skillman's Netted	<b>Maize</b>	.35	.40
Surprise	<b>Method</b>	.35	.40
Perfection or Princess	<b>Miasma</b>	.35	.40
Banquet	<b>Microbe</b>	.35	.40
Ward's Nectar	<b>Masque</b>	.35	.40
Banana	<b>Medial</b>	.35	.40
Delmonico (orange flesh)	<b>Maul</b>	.35	.40
Persian or Casaba	<b>Malope</b>	.35	.40
Jenny Lind	<b>Martin</b>	.30	.35
Pineapple	<b>Matri</b>	.35	.40
White Japan	<b>Maur</b>	.30	.35
Bay View	<b>Much</b>	.30	.35
Shumway's Giant	<b>Meager</b>	.40	.45

**WATERMELONS.**

Kolb Gem, 100 lbs., \$20.00	<b>Melil</b>	.25	.30
Jordan's Gray Monarch	<b>Malvon</b>	.30	.35
Hungarian Honey	<b>Money</b>	.35	.40
Florida Favorite, 100 lbs., \$25.00	<b>Macaw</b>	.30	.35
Kentucky Wonder	<b>Madman</b>	.30	.35
Seminole	<b>Minole</b>	.30	.35
Johnson's Christmas, 100 lbs., \$20.00	<b>Minea</b>	.25	.30
Vick's Early, 100 lbs., \$25.00	<b>Malono</b>	.30	.35
Sealy Bark, 100 lbs., \$20.00	<b>Mesem</b>	.25	.30
Cuban Queen	<b>Mimul</b>	.30	.35
Georgia Rattlesnake	<b>Mignon</b>	.25	.30
Improved Gypsy	<b>Mirab</b>	.25	.30
Mammoth Ironclad, 100 lbs., \$25.00	<b>Momo</b>	.30	.35
Peerless	<b>Morning</b>	.30	.35
Mountain Sweet	<b>Mukia</b>	.25	.30
Black Spanish	<b>Musa</b>	.25	.30
"Boss"	<b>Muskon</b>	.25	.30
Mountain Sprout	<b>Mask</b>	.30	.30
Ice Cream (gray seed)	<b>Moro</b>	.30	.35
Ice Cream (white seed or Strawberry)	<b>Mutter</b>	.30	.35
Icing, or Ice Rind	<b>Make</b>	.30	.35
Ruby Gold	<b>Matron</b>	.40	.50
Dixie	<b>Maze</b>	.30	.35
Orange	<b>Murray</b>	.35	.40
Preserving Citron	<b>Munds</b>	.35	.40
Phinney's Early	<b>Moldon</b>	.25	.30
Burpee's White Gem	<b>Migrate</b>	.35	.40
Irondequoit	<b>Mildew</b>	.35	.40
Delaware	<b>Milfoil</b>	.35	.40
Volga	<b>Militant</b>	.40	.45
Golden Honey	<b>Militia</b>	.40	.45
Jumbo	<b>Minnow</b>	.35	.40

**MUSTARD.**

Curled Creole (Frotscher)	<b>Mary</b>	.45	.50
White	<b>Monk</b>	.12	.15
Black or Brown	<b>Mark</b>	.12	.15

**MUSTARD.—(For Flavoring)**

White London	<b>Must</b>	.08	.10
Brown or Black	<b>Mike</b>	.08	.10

**NASTURTIUM.**

	Tel. Cipher.	10 lbs.	Per lb.
Tall Yellow . . . . .	<b>Nuts</b> . . . . .	\$0.90	\$1.00
Dwarf Crimson . . . . .	<b>Nice</b> . . . . .	.90	1.00

**OKRA.**

Tall . . . . .	<b>Obel</b> . . . . .	.20	.25
Ely's Dwarf (selected) . . . . .	<b>Olean</b> . . . . .	.20	.25
Smooth Round Pod, or White Velvet . . . . .	<b>Onoth</b> . . . . .	.25	.30

**ONION SEED.**

Ely's Extra Early Red (makes fine sets) . . . . .	<b>Outlast</b> . . . . .	1.15	1.25
Ely's White or Silver Skin (Phila. grown for sets) . . . . .	<b>Oblige</b> . . . . .	2.25	2.50
Ely's Yellow Dutch or Strasburg (Phila. grown for sets) . . . . .	<b>Oberon</b> . . . . .	1.15	1.25
White Portugal or Silver Skin . . . . .	<b>Oasis</b> . . . . .	2.25	2.50
Prize Taker (Maule's) . . . . .	<b>Obedient</b> . . . . .	1.75	2.00
Large Red Wethersfield . . . . .	<b>Obelisk</b> . . . . .	1.25	1.40
Large Yellow Danvers (flat) . . . . .	<b>Ovid</b> . . . . .	1.25	1.40
Danvers Yellow Globe . . . . .	<b>Oxalis</b> . . . . .	1.25	1.40
Southport Yellow Globe . . . . .	<b>Oleano</b> . . . . .	1.25	1.40
Southport Red Globe . . . . .	<b>Onothan</b> . . . . .	1.25	1.40
White Globe . . . . .	<b>Outla</b> . . . . .	2.25	2.50
White Pearl (own growth) ( <i>See Half-tone</i> ) . . . . .	<b>Oviday</b> . . . . .	1.50	1.75
White Pearl (imported) . . . . .	<b>Onyx</b> . . . . .	1.25	1.50
Louisiana Creole (Frotscher) . . . . .	<b>Osyke</b> . . . . .	Crop failed.	4.00
Bermuda Island Red . . . . .	<b>Open</b> . . . . .	1.50	1.75
Bermuda Island White . . . . .	<b>Ontario</b> . . . . .	1.50	1.75
Extra Early White Barletta . . . . .	<b>Oboe</b> . . . . .	1.50	1.75
Mammoth Silver King . . . . .	<b>Olver</b> . . . . .	1.50	1.75
Spanish King . . . . .	<b>Oking</b> . . . . .	1.50	1.75
Giant Red Tripoli . . . . .	<b>Orinico</b> . . . . .	1.00	1.25
Giant White Tripoli . . . . .	<b>Ovary</b> . . . . .	1.00	1.25
Giant Rocca . . . . .	<b>Oliver</b> . . . . .	1.00	1.25
White Queen . . . . .	<b>Ostrich</b> . . . . .	1.25	1.40
Red Bassano . . . . .	<b>Obeli</b> . . . . .	1.00	1.25



A Field of Ely's White Pearl Onion Seed, June 25, 1894.

1024 MARKET STREET, PHILADELPHIA, PA.

# "Four of a Kind"

## PRACTICAL TESTIMONIALS

We can publish letters from every State in the Union, telling of the high esteem in which ELY'S SEEDS are held, but we think a few words from the MARKET GARDENERS OF PHILADELPHIA are the best testimonials we can offer the public. These gentlemen are chosen because they have used ELY'S SEEDS for years.



J. DANIEL GAUBERT.

*Philadelphia, Pa.*  
 DEAR SIR:—I sent you word by our mutual friend, Daniel Boehm, to book me for 100 lbs. of your yellow and 50 lbs. of your white onion set seed. No other seems to grow as well and be so reliable to make a good crop. Your seeds have all given me good satisfaction, been as you represented them to be, and I am glad to give you my orders, as you work square.  
 Yours truly,  
 J. DANIEL GAUBERT.

*Philadelphia, Pa.*  
 DEAR SIR:—Please reserve for me 30 pounds of yellow and 20 of your white onion seed. I have been using your seeds for the last 10 years, and must say to you, they have given entire satisfaction. I find them above the average of other seed houses in quality and pureness. Your White Plume Celery, Onion and Cauliflower Seeds need special mention, as they are not surpassed by any other seeds of the kind elsewhere. Having only a small place, I am compelled to buy all my seeds from seed houses, and I am glad I know one I can rely on.  
 Yours truly,  
 GEO. M. GAUBERT.



JAMES WATTERS.

*Philadelphia, Pa.*  
 DEAR SIR:—Please book and reserve for me 60 pounds of Ely's yellow and 40 pounds of Ely's white onion seeds for sets, such as I have been getting of you for the past few years. All the truckers down our way wish to plant yours only, as it has given the utmost satisfaction, more so than any ever purchased elsewhere. Your Cauliflower, Jersey Wakefield Cabbage and White Plume Celery are the best I ever planted.  
 JAMES WATTERS.

*Philadelphia, Pa.*  
 DEAR SIR:—Book my order for 65 lbs. of your yellow and 30 lbs. of your white onion seed. They are second to none others sold elsewhere. I wish to compliment you on the purity of your seeds. I cannot recommend them too highly, for I have used them so long I know of what I am writing about. As we cannot grow seeds ourselves we are glad to know where we can get them pure. I plant cauliflower, cabbage, celery, salad, carrots and radish, and have always had good seeds from you. Hoping to still remain one of your customers, I am  
 Yours, etc.,  
 DANIEL BOEHM, JR.

• TRADE MARK •  
 WE BELIEVE  
 FAIR, HONEST  
 DEALING  
 THE ONLY BASIS  
 FOR PERMANENT  
 PROSPERITY



GEO. M. GAUBERT.



DANIEL BOEHM, JR.

# Philadelphia Onion Sets

	Tel. Cipher.	10 Bush.	Per Bush.
Ely's Yellow or Red	<b>Ox</b>	\$1.75	\$2.00
Ely's Yellow Danvers	<b>Othello</b>	1.75	2.00
Ely's Extra Early Red (true deep)	<b>Oxen</b>	2.00	2.25
Ely's White, Silver Skin	<b>Opal</b>	2.50	2.75
Bloomsdale Pearl (Fall only)	<b>Onan</b>	3.50	3.75
Egyptian or Winter	<b>Orient</b>	1.50	1.75
White Multiplier	<b>Over</b>	4.00	4.50
Potato Onions	<b>Omit</b>	4.00	4.50
Top Set Red	<b>Omito</b>		

Prices on Onion Sets subject to change without notice, special on application.

For years we have made a specialty of growing select Onion Sets and Onion Seeds. The superior stocks we now have are the result of many years selection **and cannot be excelled.** We do not sell Western-grown Sets under any circumstances.

Onion Sets are sold by the trade on a net cash basis only and shipped at purchaser's risk. They find ready sale all over the United States and Canada; show them in front of your store and they sell themselves.

**Packages Extra.**—Barrels, 25c. each; 1-bushel crates, 15c. each; 2-bushel crates, 25c. each; 3-bushel crates, 30c. each.



A Field of Ely's White Onion Sets.

**ONION SETS** should be **SPREAD OUT** at once on their arrival; many let them remain in the crates or barrels in which they are shipped till they heat and spoil. We will furnish **ONION CRATES** (such as we use to store sets on in our warehouse) at **40 CENTS EACH.** They are 4 feet by 3 feet, with ventilated bottoms, and can be piled one above another. 1½ to 2 bushels of sets can be spread out on each crate. Piled ten high you can carry a stock of 15 to 20 bushels of Onion Sets on a floor space of 12 square feet, and they will keep for months without being turned or touched. Will ship any quantity wanted, packed in skeleton crates or stripped together

*Ely's Garden and Flower Seeds in Packets are unexcelled. We believe we have the best seeds at the most popular prices and on the most liberal terms.*

1024 MARKET STREET, PHILADELPHIA, PA.



**“TRUTH IS MIGHTY, AND WILL PREVAIL”**



**A Field of Ely's Yellow Onion Seed, June 25, 1894.**

This is our Selected Seed for raising Sets which has obtained so great a reputation around Philadelphia.



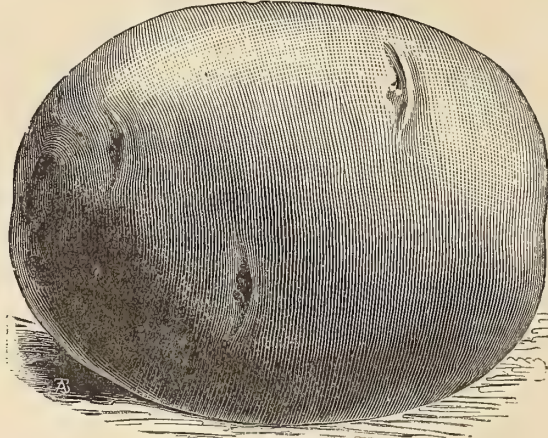
**A Field of Ely's Selected White Onion Seed, June 25, 1894.**

This seed produces the finest White Sets known to the trade.

1024 MARKET STREET, PHILADELPHIA, PA.

# ELY'S PURE SEED POTATOES

EASTERN GROWN



Rural New Yorker.

We make a specialty of select seed potatoes; and furnish our trade with circulars about them, which they can send to their customers, and thus increase their sales.

Prices are for large round hoop flour barrels holding 165 lbs. of potatoes, in store here, and are **SUBJECT TO CHANGE WITHOUT NOTICE.** *Special offers on large lots made upon application.*

The following list embraces the best, most reliable and distinctly valuable sorts, and can be relied upon to give the best results, and be as represented:—

## EARLY SORTS.

	Tel. Cipher.	10 Bbls.	Per Bbl.
The Freeman . . . . .	<b>Puff</b> . . . . .	\$4.25	\$4.50
Early Ohio . . . . .	<b>Poho</b> . . . . .	3.25	3.50
Canada Early Rose . . . . .	<b>Prim</b> . . . . .	3.25	3.50
Prince Edward Island Rose . . . . .	<b>Prince</b> . . . . .	3.25	3.50
Nova Scotia Early Rose . . . . .	<b>Purity</b> . . . . .	3.25	3.50
Maine or Holeyton Early Rose . . . . .	<b>Prater</b> . . . . .	3.25	3.50
Extra Early Vermont Rose . . . . .	<b>Praying</b> . . . . .	3.25	3.50
Early Snowflake . . . . .	<b>Pranker</b> . . . . .	3.25	3.50
Early Beauty of Hebron . . . . .	<b>Prouty</b> . . . . .	3.25	3.50
Pearl of Savoy . . . . .	<b>Pearl</b> . . . . .	3.25	3.50
Crown Jewel . . . . .	<b>Phone</b> . . . . .	3.75	4.00
Early Sunrise . . . . .	<b>Pew</b> . . . . .	3.25	3.75
Charles Downing . . . . .	<b>Prow</b> . . . . .	3.75	4.00

## MEDIUM AND LATE SORTS.

Rural New Yorker . . . . .	<b>Prone</b> . . . . .	3.25	3.50
Late Beauty of Hebron . . . . .	<b>Pique</b> . . . . .	3.25	3.50
Late Rose . . . . .	<b>Pixy</b> . . . . .	3.25	3.50
White Star . . . . .	<b>Prowler</b> . . . . .	3.25	3.50
Burbanks . . . . .	<b>Provender</b> . . . . .	3.25	3.50
Empire State . . . . .	<b>Pempi</b> . . . . .	3.25	3.50
White Elephant . . . . .	<b>Phant</b> . . . . .	3.25	3.50
Rural Blush . . . . .	<b>Poise</b> . . . . .	3.25	3.50
Mammoth Pearl (very prolific) . . . . .	<b>Percival</b> . . . . .	3.25	3.50
Peerless . . . . .	<b>Prowling</b> . . . . .	3.25	3.50

For full descriptions, see *Ely's Garden Manual.* **Special prices on application.**

## PARSLEY.

		10 lbs.	Per lb.
Ely's Garnishing, New . . . . .	<b>Paint</b> . . . . .	.50	.60
Ely's Market Garden . . . . .	<b>Parker</b> . . . . .	.50	.60
Emerald Gem . . . . .	<b>Pabulum</b> . . . . .	.50	.60
Double Curled (extra) . . . . .	<b>Petty</b> . . . . .	.45	.50
Champion Moss Curled . . . . .	<b>Pain</b> . . . . .	.50	.55
Plain, or Single . . . . .	<b>Plain</b> . . . . .	.25	.30

1024 MARKET STREET, PHILADELPHIA, PA.

**PARSNIP.**

	Tel. Cipher.	10 lbs.	Per lb.
Ely's Selected Hollow Crown . . . . .	<b>Pablo</b> . . . . .	\$0.40	\$0.50
Fine Sugar . . . . .	<b>Pink</b> . . . . .	.25	.30
Student . . . . .	<b>Plump</b> . . . . .	.25	.30

**PEPPERS.**

Bell, or Bull Nose . . . . .	<b>Ponia</b> . . . . .	1.25	1.50
Long Red Cayenne . . . . .	<b>Palaf</b> . . . . .	1.40	1.50
Spanish Monstrous . . . . .	<b>Paay</b> . . . . .	1.40	1.50
Sweet Mountain . . . . .	<b>Passion</b> . . . . .	1.40	1.50
Red Cherry . . . . .	<b>Past</b> . . . . .	1.40	1.50
Golden Dawn . . . . .	<b>Passa</b> . . . . .	1.40	1.50
Ruby King . . . . .	<b>Posy</b> . . . . .	1.50	1.75
Celestial . . . . .	<b>Pacha</b> . . . . .	1.40	1.50

**PEAS.—Short Crops. (Wrinkled Sorts marked thus \*.)**

	Height in feet.		10 Bush.	Per Bush.
Ely's Best Extra Early, Sealed . . . . .	2½	<b>Pruice</b> . . . . .	3.25	3.50
Philadelphia, Extra Early . . . . .	3	<b>Parry</b> . . . . .	2.75	3.00
First and Best (Cleveland's Stock) . . . . .	2½	<b>Pembina</b> . . . . .	3.00	3.25
Rural New Yorker . . . . .	2½	<b>Pottebo</b> . . . . .	3.00	3.25
Early Washington . . . . .	3	<b>Profound</b> . . . . .	2.50	2.75
Alaska . . . . .	2½	<b>Pokera</b> . . . . .	3.50	3.75
Early Frame, May . . . . .	3	<b>Profess</b> . . . . .	2.50	2.75
Tom Thumb . . . . .	¾	<b>Prenton</b> . . . . .	4.50	4.75
<b>Dwarf Blue Imperial</b> . . . . .	2½	<b>Paise</b> . . . . .	2.75	3.00
*Eugenie, prolific and delicious . . . . .	2	<b>Profane</b> . . . . .	3.50	3.75
<b>Black Eye Marrowfat</b> (first quality) . . . . .	3½	<b>Psalm</b> . . . . .	1.60	1.75
<b>White Eye Marrowfat</b> " " " " . . . . .	4	<b>Pratt</b> . . . . .	1.60	1.75
<b>Dwarf White or Royal Irish Marrowfat</b> . . . . .	3½	<b>Potter</b> . . . . .	1.60	1.75
Kentish Invicta . . . . .	2½	<b>Purple</b> . . . . .	3.25	3.75
*Laxton's Alpha . . . . .	3	<b>Parish</b> . . . . .	4.00	4.25
*McLean's Little Gem . . . . .	1½	<b>Privilege</b> . . . . .	4.50	4.75
*Carter's Premium Gem . . . . .	1	<b>Provoke</b> . . . . .	4.50	4.75
*American Wonder (Crop Short) . . . . .	½	<b>Poke</b> . . . . .	5.75	6.00
*Bliss Everbearing . . . . .	2	<b>Proxey</b> . . . . .	3.50	3.75
*Bliss Abundance . . . . .	2½	<b>Peaked</b> . . . . .	3.50	3.75
*Horsford's Market Garden . . . . .	2½	<b>Peruke</b> . . . . .	3.75	4.00
*McLean's Advancer . . . . .	2½	<b>Polem</b> . . . . .	3.25	3.50
*Yorkshire Hero . . . . .	2	<b>Poly</b> . . . . .	3.25	3.50
Long Island Mammoth . . . . .	2½	<b>Palter</b> . . . . .	3.75	4.00
<b>Pride of the Market</b> . . . . .	2	<b>Poten</b> . . . . .	5.00	5.50
Dwarf Sugar (edible pods) . . . . .	3	<b>Pyrel</b> . . . . .		5.00
Tall Sugar (edible pods) . . . . .	4	<b>Pigot</b> . . . . .		5.00
Tall Melting Sugar (edible pods) . . . . .	5	<b>Panic</b> . . . . .		9.00
* <b>Champion of England</b> . . . . .	4½	<b>Pup</b> . . . . .	3.00	3.25
*Carter's Telephone . . . . .	3	<b>Proud</b> . . . . .	4.75	5.00
*Carter's Strategem . . . . .	1½	<b>Poppy</b> . . . . .	5.75	6.00
<b>Canada Field Peas</b> . . . . .	3	<b>Palette</b> . . . . .	1.25	1.35

† Sealed packages of Peas, containing ½ pint each, \$5.00 per 100.

Sealed packages of Peas, containing 1 pint each, \$10.00 per 100.

**PUMPKIN.**

		10 lbs.	Per lb.
<b>Cashaw Crook-neck</b> . . . . .	<b>Pump</b> . . . . .	.30	.35
<b>Large Cheese</b> . . . . .	<b>Profit</b> . . . . .	.30	.35
Quaker Pie . . . . .	<b>Pagan</b> . . . . .	.35	.40
Jonathan . . . . .	<b>Palter</b> . . . . .	.30	.35
Mammoth Etampes . . . . .	<b>Pancade</b> . . . . .	.90	1.00
Tenn. Sweet Potato . . . . .	<b>Pacify</b> . . . . .	.35	.40
Japan Pie . . . . .	<b>Palfrey</b> . . . . .	.30	.35
Connecticut Field, \$2.50 per bush. . . . .	<b>Paiste</b> . . . . .	.12	.15
Mammoth Tours . . . . .	<b>Prague</b> . . . . .	.90	1.00
Nantucket Sugar or Negro Head . . . . .	<b>Panta</b> . . . . .	.30	.35
King of Mammoths . . . . .	<b>Penguin</b> . . . . .	.90	1.00
Small Yellow Sugar . . . . .	<b>Penult</b> . . . . .	.30	.35

**RADISH.**

	Tel. Cipher.	10 lbs. or more.	Per lb.
Ely's Early Long Scarlet (Short Top) American . . .	Rain	\$0.30	\$0.35
Scarlet Turnip (White Tail) . . .	Rubber	.45	.50
White Box . . .	Rox	.35	.40
Wood's Early Frame . . .	Rainon	.30	.35
Scarlet Globe Turnip . . .	Rutti	.60	.75
Early Red Turnip . . .	Red	.30	.35
Early Deep Scarlet Turnip . . .	Redraw	.30	.35
Non Plus Ultra, Extra Early Scarlet (forcing) . . .	Rebus	.50	.55
Early Scarlet French Breakfast . . .	Runt	.35	.40
Early Scarlet Olive Shaped . . .	Raber	.35	.40
French Half-Long Scarlet . . .	Rabid	.40	.45
Early White Turnip . . .	Rabbi	.35	.40
Extra Early White Turnip . . .	Rat	.35	.40
Ely's Yellow Summer Turnip . . .	Rate	.40	.45
Ely's White Summer Turnip (selected) . . .	Roar	.40	.45
Golden Globe . . .	Rubbish	.35	.40
Black Spanish (Winter) . . .	Rosy	.40	.50
Chinese Rose (Winter) . . .	Rigor	.60	.75
California Mammoth White (Winter) . . .	Rig	.70	.75
Chartier . . .	Redness	.45	.50
White Strasburg . . .	Rese	.75	.80
Long White Vienna . . .	Rowd		1.00

**RAPE.**—Spring Kale for Sowing . . . . . **Bront** . . . . . .10 .15

**RHUBARB** . . . . . **Rocket** . . . . . .75 .80

**ROQUETTE** . . . . . **Roquette** . . . . . .45 .50

**SALSIFY, or Oyster Plant.**

Ely's Mammoth White . . . . .	Samuel	.90	1.00
Sandwich Island . . . . .	Saul	.90	1.00

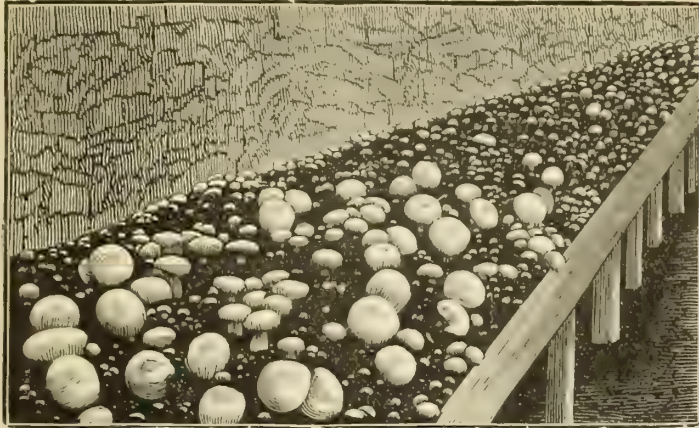
**SPINACH.**

Ely's Market Garden (100 lbs., \$10.00) . . . . .	Sclav	.12	.15
Ely's Long Standing (100 lbs., \$7.00) . . . . .	Salvia	.12	.15
Round Savoy (100 lbs., \$8.00) . . . . .	Sate	.10	.12
Norfolk Savoy . . . . .	Secret	.10	.12
Bloomsdale or American Curled (warranted true, 100 lbs., \$15.00) . . . . .	Savoy	.16	.18
Flanders (Broad Leaf, 100 lbs., \$8.00) . . . . .	Salary	.10	.12
Imported Bloomsdale (100 lbs., \$8.00) . . . . .	Salad	.10	.12
Prickly Seeded . . . . .	Supp	.10	.12
Viroflay . . . . .	Shekand	.10	.12

**SQUASH.**

Early Bush, or Patty-Pan . . . . .	Sut	.25	.30
Yellow Bush . . . . .	Sash	.25	.30
Yellow Summer Crook-neck . . . . .	Sitter	.30	.35
Canada Crook-neck (Winter) . . . . .	Stuo	.30	.35
Brazil Sugar . . . . .	Statuary	.35	.40
Valparaiso . . . . .	Statue	.40	.45
New Golden Custard . . . . .	Status	.30	.35
Bay State . . . . .	Stave	.30	.35
Butman . . . . .	Stead	.25	.30
Mammoth Chili . . . . .	Steady	.45	.50
Cocoonut, or White Turban . . . . .	Steal	.35	.40
Fordhook . . . . .	Steep	.35	.40
Red China . . . . .	Steeple	.35	.40
Perfect Gem . . . . .	Saint	.35	.40
London Vegetable Marrow . . . . .	Seller	.45	.50
Boston Marrow . . . . .	Salve	.25	.30
Improved Marrow . . . . .	Set	.30	.35
Hubbard . . . . .	Sell	.30	.35
Essex Hybrid, or Turban . . . . .	Sally	.30	.35
Marblehead . . . . .	Sale	.35	.40
Winter Crook-neck . . . . .	Salivate	.30	.35
White Pineapple . . . . .	Sappe	.35	.40
Pike's Peak . . . . .	Sabre	.30	.35

# MUSHROOM SPAWN



Mushrooms can be readily grown in cellars, stables, sheds or pits.

Many are successfully grown on a shelf in an ordinary cellar and yield sufficient crops to compensate the grower for his effort. Spent hot-beds also meet the requirements of the mushroom in a large measure. Bits of spawn can be inserted before the bed has become cold between the plants. When the plants are removed, keep

shaded with long litter, and water occasionally if necessary. The space under greenhouse benches or stagings will suit them exactly, using materials in same manner as described. They will also grow admirably on top of the bench, as shown in the illustration, using cloth for shading instead of litter. The time required for a bed to come into bearing is three to six weeks.

**Best English Milltrack Spawn**, per brick, 15c. ; 10 lbs., \$1.00; 25 lbs., \$2.00; 50 lbs., \$3.50, or \$7.00 per 100 lbs.

**Mushrooms, How to Grow Them**, by Wm. Falconer, post-paid, \$1.50.

**Mushroom Culture** (Robinson), post-paid, 50 cents.

**TOMATO.**—*Selected from finest fruits grown and saved for seed only.*

	Tel. Ciph.	10 lbs. and over	Per lb.
Ely's King of the Earlies	Tast	\$1.50	\$1.75
Dwarf Champion	Tamp	1.50	1.75
Livingston's New Stone	Tymbal	1.25	1.50
Selected Early Acme	Trichos	1.25	1.50
Selected Paragon	Tritom	1.00	1.25
Selected Trophy	Trop	1.00	1.25
Mansfield's Tree	Tuscano	1.75	2.00
Livingston's Favorite	Thomas	1.00	1.25
Livingston's Perfection	Thun	1.00	1.25
Livingston's Beauty	Trusty	1.00	1.25
Livingston's Royal Red	Teetotal	1.25	1.50
Essex Hybrid	Tegument	1.25	1.50
Thorburn's Long Keeper	Taxider	1.25	1.50
Henderson's 400 "Ponderosa"	Teasel	3.25	3.50
Mikado, or Turner Hybrid	Tunic	1.50	1.75
Canada Victor	Telfair	1.00	1.25
Conqueror	Telling	1.00	1.25
Early Large Smooth Red	Told	.75	1.00
Mayflower	Topmost	1.25	1.50
Golden Trophy	Tainted	1.50	1.75
Volunteer	Teer	1.25	1.50
Golden Queen	Trulent	1.50	1.75
Red Peach	Trickle	1.25	1.50
Yellow Peach	Tedious	1.75	2.00
Cumberland Red	Teeth	1.00	1.25
Yellow Plum	Telltale	1.25	1.50
Ignotum	Tympan	1.25	1.50
Atlantic Prize	Thypus	1.25	1.50
Lorrillard	Turpit	1.25	1.50
Optimus	Turpit	1.25	1.50

# Ely's Reliable Turnip Seeds

## TESTED AND TRUE

Sold without misrepresentations and false statements regarding our competitors.

All of highest grades, grown from transplanted and selected roots of the most excellent quality, true to name and type, and of tested vitality. We claim that no seeds sold in this land to-day are produced from more reliable sources, or sold with more sincere care and fidelity of representation.

Our Beautiful Show Cards are furnished free with all orders, and our illustrated cartons are regarded as the best in the trade.

25 lbs. of a kind will be Billed at 100-lb. prices. 250 lbs. or more of a kind, at 1,000-lb. rates.

### TURNIP.

	Tel. Cipher.	Per lb.	10 lbs.	100 lbs.	1000 lbs.
<b>Ely's Mammoth Purple Top</b>	<b>Truth</b>	\$.25	\$.24	\$.22	\$.20
(The largest White Flesh Turnip known. Fine for stock).					
<b>Ely's Red Top Globe</b> (very fine for table)	<b>Turn</b>	.25	.24	.22	.20
<b>Red or Purple Top</b> (Strap Leaf)	<b>Top</b>	.25	.20	.19	.18
<b>White Flat Dutch</b> (Strap Leaf)	<b>Trot</b>	.25	.20	.19	.18
Extra Early Purple Top Milan	<b>Torrey</b>	.35	.32	.30	.28
Pomeranian White Globe	<b>Tank</b>	.20	.19	.18	.17
Large White Globe	<b>Taint</b>	.20	.19	.18	.17
Large White Norfolk	<b>Tar</b>	.20	.19	.18	.17
Early White Egg (true, very fine)	<b>Trait</b>	.25	.24	.22	.20
White Cow Horn (scarce)	<b>Tail</b>	.25	.24	.22	.20
Extra Early Red Top Munich.	<b>Trap</b>	.30	.28	.26	.25
Seven Top (for Turnip Greens)	<b>Tub</b>	.25	.24	.22	.20
Sweet German or Rock (true)	<b>Travel</b>	.25	.24	.22	.20
Southern Snow White Globe	<b>Troup</b>	.25	.24	.22	.20
White Model	<b>Throstle</b>	.25	.24	.22	.20
Southern Prize		.25	.24	.22	.20
Purple Top Yellow Aberdeen	<b>Tea</b>	.25	.24	.22	.20
Ely's Amber Globe (selected)	<b>Tip</b>	.25	.24	.22	.20
Yellow Globe	<b>Tan</b>	.25	.24	.22	.20
Golden Ball or Orange Jelly (true)	<b>Toy</b>	.25	.24	.22	.20
<b>Ely's Long Island Ruta Baga</b>	<b>Trier</b>	.30	.28	.26	.25
(The finest table variety ever introduced.)					
<b>Ely's Improved Purple Top Yellow Ruta Baga</b>	<b>Tricks</b>	.25	.24	.22	.20
Purple Top Yellow Ruta Baga (improved)	<b>Trunk</b>	.25	.24	.20	.18
Skirving's English Ruta Baga	<b>Truck</b>	.25	.24	.20	.18
Carter's Imperial Ruta Baga	<b>Toil</b>	.25	.24	.20	.18
White, or Russian	<b>Think</b>	.25	.24	.22	.20
Dixie Land	<b>Thunk</b>	.25	.24	.22	.20
Budlong, or Bread Stone	<b>Truneo</b>	.25	.24	.22	.20

We regard a Jobber as a merchant who buys the jobbing quantity.

Order your Turnip Seeds put up in  $\frac{1}{4}$ ,  $\frac{1}{2}$  and 1-lb. cartons; saves time, labor, and loss in weight, as well as all chance of error as to variety. Cost only 1 cent per carton extra.

1024 MARKET STREET, PHILADELPHIA, PA.



A field of **Ely's Selected Ruta Baga Turnip**, as it appeared on June 18, 1894, grown from our selected seed stock, near Philadelphia.  
The finest field of American-grown Turnip I have ever seen in 21 years' inspection.—Z. DeForest Ely.



## Ely's Pure Bird Food

This popular brand of Mixed Bird Seed, for Canaries and other caged birds, is so well known as to need no praise.

Ely's Bird Food is the largest, cleanest and finest mixture known to the trade; its many points of excellence render it the most salable.

### Why it pays to buy Ely's Mixed Bird Seed.

Because **it gives satisfaction**, and a pleased patron is the best advertisement.

**It contains more seed** than other brands, and the people soon find it out.

**It is clean**, being all recleaned in our own fanning mills before putting it up.

The **hemp seed** is in a separate package so it can be fed as desired.

Each **package** contains a small piece of cuttlebone.

It is beautifully put up.

Retail price, 10 cents per pound package; \$6.00 per 100 lbs. case; \$25.00 for 500 lbs. at one order. Sold by Druggists and others all over the United States.

**BIRD SEEDS.**

Red Gravel, per case 3 doz. \$1.05.

Silver Gravel, per case 3 doz. \$1.05.

	Tel. Cipher.	Per lb.	Per Bush.
Mixed Canary (by sack)	<b>Verily</b>	\$0.04	\$2.50
Canary, Sifted Sicily "	<b>Vessel</b>	.04	2.50
Hemp, "	<b>Vest</b>	.03½	1.75
Millet (Italian) "	<b>Vex</b>	.02½	1.25
Rape (German) "	<b>Vesture</b>	.04½	2.25
Rape (London) "	<b>Vocal</b>	.06	3.00
Maw (Blue Poppy)	<b>View</b>	.15	
Lettuce	<b>Vial</b>	.25	
Unhulled Rice	<b>Vigor</b>	.05	
Mocking Bird Food, in bottles, per doz. \$2.75			
Sunflower Seed for Parrots		.07	1.75
Bird Manna, \$1.25 per doz.			

**FISH BONE** . . . . . **Village** . . . . . .25

**FLOWER SEEDS.**

Papers, assorted, 5-cent varieties, @ \$2.00 per 100.

Papers, assorted, 10-cent varieties, @ \$4.00 per 100.

We issue a separate Flower Seed Catalogue, which is mailed on application.

**MILLET SEED.**

		Per lb.	Per Bush.
Hungarian Grass (48 lbs.)	<b>Vail</b>	.03	1.25
German, or Southern (45 lbs.)	<b>Vain</b>	.03	1.25
American, or Common Millet	<b>Vaino</b>	.03	1.25
Italian Millet	<b>Vailo</b>	.02½	1.25

**MISCELLANEOUS SEEDS.**

		Per lb.	Per Bush.
Seed Wheat (Best Winter)	<b>Vacco</b>		1.25
" " (Best Spring)	<b>Vache</b>		1.25
" " Jones' Fife (Winter)	<b>Vadakin</b>		1.50
" " Red Clawson "	<b>Vaga</b>		1.25
Vetches, or Tares	<b>Vale</b>	.10	3.00
Flax Seed	<b>Valiant</b>	.04	2.00
Broom Corn ( <b>Evergreen</b> )	<b>Valor</b>	.10	2.50
Broom Corn (Dwarf)	<b>Valente</b>	.10	2.50
Broom Corn (Golden California)	<b>Valentine</b>	.10	2.50
Spanish Peanuts	<b>Valer</b>		2.50
Chufas (per qt. 30c.)	<b>Valet</b>		4.00
Cotton Seed (Sea Island)	<b>Valko</b>	.10	
Cotton Seed (Upland)	<b>Vallance</b>	.10	
Cow Peas (prices vary)	<b>Vallee</b>		2.25
Lupins (White)	<b>Vallier</b>	.10	
Lupins (Yellow)	<b>Vanaman</b>	.10	
Lupins (Blue)	<b>Vanarsdale</b>	.10	
Osage Orange (33 lbs.)	<b>Valley</b>	.40	9.00
Soja Beans	<b>Vista</b>	.15	3.00
Ramie Seed	<b>Vulgate</b>	6.00	
Wild Rice	<b>Votive</b>	.20	
Sunflower	<b>Valve</b>	.07	1.75
Seed Buckwheat (Silver Hull)	<b>Vanity</b>		1.00
Seed Buckwheat (Japanese)	<b>Vanito</b>		1.25
Seed Oats	<b>Vapor</b>		1.00
Seed Rye	<b>Vaunt</b>		1.00
Seed Barley (48 lbs.)	<b>Venison</b>		1.25
Kaffir Corn (Branching Sorghum) \$6.50 per 100 lbs.	<b>Vent</b>	.10	
Pearl Millet \$10.00 " "	<b>Vinto</b>	.12	
Teosinte	<b>Visto</b>	1.00	
Milo Maize (Rural Branching Sorghum) \$6.50 per 100 lbs.	<b>Vilo</b>	.10	
Amber Sugar Cane \$5.00 " "	<b>Vane</b>	.08	2.50



**CLOVER SEEDS.**—Subject to change. Prices on application.

	No. of lbs. to Bush.	Tel. Cipher.	100 lbs.	Per lb.
American Red (re-cleaned)	60	<b>Unloose</b>	\$10.00	\$0.12
Mammoth or Pea Vine Clover	60	<b>Unlo</b>	10.00	.12
White Dutch (first quality)	60	<b>Unripe</b>	30.00	0.35
White Dutch (second quality)	60	<b>Unruly</b>	25.00	.30
Lucerne, or Alfalfa	60	<b>Unshod</b>	9.00	.12
Alsike, or Hybrid	60	<b>Until</b>	17.00	.20
<b>Trifolium Incarnatum</b> , or German Clover	60	<b>Unwise</b>	6.50	.08
Japan Clover ( <i>Lespedeza Striata</i> )		<b>Unfurl</b>	25.00	.30

**GRASS SEEDS.**—Subject to change.

		Per lb.	Per Bush,
Red Top Grass (sack 50 lbs., \$3.00) (Bus. 10 lbs.)	<b>Unknown</b>	\$0.10	\$0.75
Kentucky Blue Grass (finest re-cleaned) (14 lbs.)	<b>United</b>	.12	1.75
Kentucky Blue Grass (14 lbs.) (choice)	<b>Unit</b>	.10	1.40
Orchard Grass (14 lbs.)	<b>Upright</b>	.18	2.75
Timothy (45 lbs.)	<b>Upper</b>	.07	2.75
English Perennial Rye Grass (24 lbs.)	<b>Urbane</b>	.07	1.50
Johnson Grass	<b>Uhsou</b>	.10	3.50
Bermuda Grass	<b>Unwept</b>	1.00	

**PAPER SEED BAGS.**—Best Quality.—Reduced Prices.

(Printing merchant's name on, 75 cts. to \$1.00 per 1,000 extra.)

No.	Description	Tel. Cipher.	Per 1000
No. A,	Flower Seed (Fancy)	<b>Wafer</b>	\$1.50
" B,	Garden Seed (Buff) size 4¾ x 2¾	<b>Wagon</b>	1.25
" C,	" " " " 5¾ x 3¾	<b>Wages</b>	1.50
" D,	" " " " 5¼ x 3¾	<b>Wail</b>	1.50
" E,	Half-pint, Manilla	<b>Weight</b>	2.25
" F,	Pint, " "	<b>Wake</b>	2.50
" G,	Pound, " "	<b>Wait</b>	3.00
" H,	Quart, " "	<b>Walk</b>	3.25
" I,	Two pounds, " "	<b>Wall</b>	4.25
" J,	Two quarts, " "	<b>Wander</b>	4.75
" K,	Three pounds, " "	<b>Want</b>	7.00
" L,	Four quarts, " "	<b>Warm</b>	8.00
" M,	Six quarts, " "	<b>War</b>	10.00
" N,	Ten pounds, " "	<b>Ward</b>	11.00
" O,	Eight quarts, " "	<b>Ware</b>	12.00

**SEEDS REQUISITE TO PRODUCE A GIVEN NUMBER OF PLANTS AND SOW A GIVEN AMOUNT OF GROUND.**

	QUANTITY PER ACRE.		QUANTITY PER ACRE.
Artichoke, 1 oz. to 500 plants	½ lb.	Hemp	½ bu.
Asparagus, 1 oz. to 200 plants	5 lbs.	Kale, 1 oz. to 3,000 plants	4 07.
Barley	2½ bu.	Kohl-Rabi, 1 oz. to 200 feet of drill	1½ lbs.
Beans, Dwarf, 1 quart to 150 feet of drill	1¼ "	Leek, 1 oz. to 250 feet of drill	4 "
Beans, Pole, 1 quart to 200 hills	½ "	Lettuce, 1 oz. to 250 feet of drill	3 "
Beet, Garden, 1 oz. to 100 feet of drill	10 lbs.	Martynia, 1 oz. to 50 feet of drill	10 "
Beet, Mangel, 1 oz. to 150 feet of drill	6 "	Melon, Musk, 1 oz. to 100 hills	1¼ "
Broccoli, 1 oz. to 3,000 plants	5 oz.	" Water, 1 oz. to 25 hills	1½ "
Broom Corn	10 lbs.	Nasturtium, 1 oz. to 50 feet of drill	10 "
Brussels Sprouts, 1 oz. to 3,000 plants	5 "	Oats	2½ bu.
Buckwheat	½ bu.	Okra, 1 oz. to 50 feet of drill	10 lbs.
Cabbage, 1 oz. to 3,000 plants	5 oz.	Onion Seed, 1 oz. to 200 feet of drill	5 "
Carrot, 1 oz. to 250 feet of drill	2½ lbs.	" " for Sets	30 "
Cauliflower, 1 oz. to 3,000 plants	5 oz.	" Sets, 1 quart to 20 feet of drill	8 bu.
Celery, 1 oz. to 10,000 plants	4 "	Parsnip, 1 oz. to 250 feet of drill	5 lbs.
Clover, Alsike and White Dutch	6 lbs.	Parsley, 1 oz. to 250 feet of drill	8 "
" Lucerne, Large Red and Crimson Trefoil,	8 "	Peas, Garden, 1 quart to 150 feet of drill	1¼ bu.
" Medium	10 "	" Field	2½ "
Collards, 1 oz. to 2,500 plants	6 oz.	Pepper, 1 oz. to 1,500 plants	4 oz.
Corn, Sweet, 1 quart to 500 hills	8 qts.	Potatoes	8 bu.
Cress, 1 oz. to 150 feet of drill	8 lbs.	Pumpkin, 1 quart to 300 hills	4 qts.
Cucumbers, 1 oz. to 80 hills	1¼ "	Radish, 1 oz. to 150 feet of drill	8 lbs.
Egg Plant, 1 oz. to 2,000 plants	3 oz.	Rye	1¼ bu.
Endive, 1 oz. to 300 feet of drill	3 lbs.	Salsify, 1 oz. to 60 feet of drill	8 lbs.
Flax, broadcast	½ bu.	Spinach, 1 oz. to 150 feet of drill	10 lbs.
Garlic, bulbs, 1 lb. to 10 feet of drill	8 "	Summer Savoy, 1 oz. to 500 feet of drill	2 "
Gourd, 1 oz. to 25 hills	2½ lbs.	Squash, Summer, 1 oz. to 40 hills	2 "
Grass, Blue Kentucky	2 bu.	" Winter, 1 oz. to 10 hills	3 "
" Blue English	1 "	Tomato, 1 oz. to 3,000 plants	3 oz.
" Hungarian and Millet	½ "	Tobacco, 1 oz. to 5,000 plants	2 "
" Mixed Lawn	3 "	Turnip, 1 oz. to 200 feet of drill	1½ lbs.
" Orchard, Perennial, Rye, Red Top, Fowl Meadow and Wood Meadow	3 "	Vetches	2 bu.
		Wheat	1 to 2 "

# ... SPRING BULBS ...

## AMARYLLIS.

	Per 100.	Each.
<b>Belladonna</b> (White, flushed with Rosy Purple)	\$20.00	\$0.30
<b>Formosissima</b> (Red Jacobean Lily)	8.00	.10
<b>Johnsonii</b> (Crimson, striped with White)	25.00	.30
<b>Anemone</b> Fulgens, Scarlet Wind Flower	1.50	.03
" Double mixed	1.00	.02
" Single mixed	.50	.01
<b>Cinnamon Vine</b>	2.50	.03
<b>Tuberous Moon Flower</b> ( <i>Ipomea Mexicana Tuberosa</i> ) hardy perennials, dry Bulbs, like Pot Rooted Dahlias	8.00	.10
<b>New Day Blooming Moon Flower</b> ( <i>Ipomea Pandurata</i> ) dry Tubers, Flowers White, Pink Centre	6.00	.10

## GLADIOLUS.

	Per 100.	Per 1000.
Colvilli Alba (The Bride)	\$0.50	\$4.00
All Colors, mixed	1.25	10.00
Red Mixture	1.00	8.00
Pink and Striped Mixture	1.75	15.00
Light Mixture (contains no red)	1.75	15.00
White and Light Mixture (all white ground)	2.50	20.00
White and Light Extra (fine for Florists' use)	3.50	30.00
Striped and Variegated Extra	2.25	20.00
Salmon and Buff (new and rare colors)	4.00	35.00
Yellow Mixture	3.50	30.00
Finest Named Sorts (20 varieties)	3.50	30.00
Finest Selected Seedlings	1.50	12.00
New " <b>Snow White</b> " (best white grown.) Every flower on the spike can be used individually for cut flower work. Positively snow white	12.00	100.00
Lemoine's Hybrid Seedlings, extra fine mixed	2.50	20.00

## TUBEROSES.—No. 2 Bulbs (smaller in size \$6.00 per 1,000).

Selected Pearl, No. 1	1.00	8.00
Double White, No. 1	1.00	8.00

## CALADIUM.

	Per 100.	Each.
Extra Large Bulbs, about $4\frac{1}{2}$ inches diameter or larger	10.00	.15
Medium " " 3 " "	7.00	.10
Small " " $2\frac{1}{2}$ " "	4.00	.06

## CANNA.

Mixed Varieties	3.00	
<b>Finest Named Varieties</b> (our selection)	6.00	
Robusta (best tall dark bronze leaf)	5.00	
New Dwarf French, mixed	5.00	
New Dwarf French " <b>Star of 1891</b> " (ever blooming, very dwarf, scarlet bordered with pure gold)	10.00	.15
New Dwarf French <b>Madam Crozy</b> (superb variety, glowing scarlet)	9.00	.15
New Dwarf French <b>Ehemanni</b> (distinct sort, carmine flowers, soft green leaves)	4.00	.05
Mixed Fall Varieties	3.00	

## MADEIRA, or MEXICAN VINE.

	2.00	
--	------	--

## DAHLIAS.

12 varieties, assorted, good mailing size	6.00
20 " good size, whole roots	8.00
10 " extra large, 2 to 4 lbs. each	15.00

## LILIES.

L. Auratum	4.00 to 8.00	.10
L. Speciosum, Album, Præcox	15.00	.20
L. Speciosum, Rubrum	8.00	.10
L. Trigrinum, (Tiger Lily)	4.50	.05
L. Trigrinum, fl. pl. (Double Tiger Lily)	5.00	.06
<b>Pæony</b> , mixed fine large roots	15.00	.20
<b>Tigridia</b> , Pavonia Grandi (Scarlet Tiger Flower)	2.00	.03
" Conchiflora (Yellow Tiger Flower)	2.00	.03
" Grandiflora Alba (White Tiger Flower)	2.00	.02
Tritoma Uvaria Grand. (Red Hot Poker)	6.00	.08



INTERIOR VIEW OF ELY'S SEED STORE,  
Showing a depth of 65 feet; total depth of all 5 floors and cellar, 180 feet each, 22 feet wide.

## DUTCH BULBS

Hyacinths, Tulips, Narcissus, Crocus, etc. We furnish, free, with your name alone on it, a neat little Bulb Catalogue that you can mail to the best people in your town. These beautiful flower bulbs must be planted before winter, and are certain to bloom in the early spring. You can sell them at good profit. We will send you assortments for \$10.00, \$15.00, \$25.00 that will find ready sale, and clear 100 per cent. profit.

### LOOK HERE

A SAMPLE \$10.00 ASSORTMENT CONTAINS

	Cost you	Retail Price	Retail Value
200 Hyacinths, Single and Double, Red, White and Blue, colors separate, @ \$2.50 per 100, . . . . .	\$5.00	75c. doz.	\$15.63
300 Tulips, Finest Mixed, all colors, @ \$1.00, . . . . .	3.00	30c. doz.	7.50
200 Crocus, Finest Mixed, @ 25c. . . . .	.50	10c. doz.	1.66
100 Narcissus, assorted, . . . . .	1.50	40c. doz.	3.33
	<b>Cost \$10.00</b>		<b>\$28.12</b>

Every lady who loves flowers is likely to become a customer for these Bulbs when she knows you have them. Business is improving. Add a profitable item to your business.

Full Wholesale Bulb List sent on application.

# Z. DeForest Ely & Co.

WHOLESALE SEED GROWERS AND FLORISTS

Importers of Bulbs and Florists' Supplies

1024 MARKET STREET,

LOCK BOX 1176

PHILADELPHIA, PA.

TELEPHONE 3415

1024 MARKET STREET, PHILADELPHIA, PA.

## WHO IS ELY?

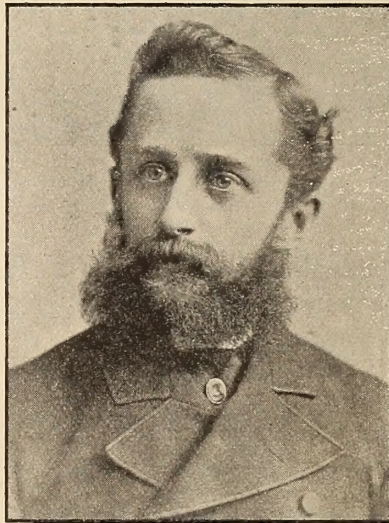
"There is a tide in the affairs of men which, taken at the flood, leads on to fortune."

"The breaks are off—turn on the steam! The load is needed—start the team! Let factory shaft and furnace glow, and salesman's book and farmer's hoe **show trade is once more on the go!**"  
N. W. AYER & SON.

"Blood will tell," either in a **Horse or a Man.**

"**Z. DeFOREST ELY** is the youngest son of the **Rev. Ezra Stiles Ely, D. D., of Philadelphia**, and was born in the house (831 N. Seventh street, Philadelphia), which he now owns and in which he still resides; his mother was **Caroline T. Holmes**, the daughter of **Thompson Holmes, M. D., of "Parsalia," Accomack Co., Virginia**; his great-grandmother was a **Miss DeForest**, of an old Huguenot French family, and from her his middle name is derived.

**Rev. Ezra Stiles Ely, D. D.**, was born in June, 1786, in Connecticut; his father was the **Rev. Zebulon Ely, D. D.**, born in Lyme, Conn., February 5, 1759, and who married **Sarah Aparm Mills**. **Rev. Zebulon Ely** was the Pastor of the First Church in **Lebanon, Conn.**, graduated at **Yale College**, November 18, 1782; he was the son of the **Rev. Ezra Ely**, born January, 1728, who married **Sarah Sterling**, and lived at **Lyme, Conn.**



Z. DeFOREST ELY

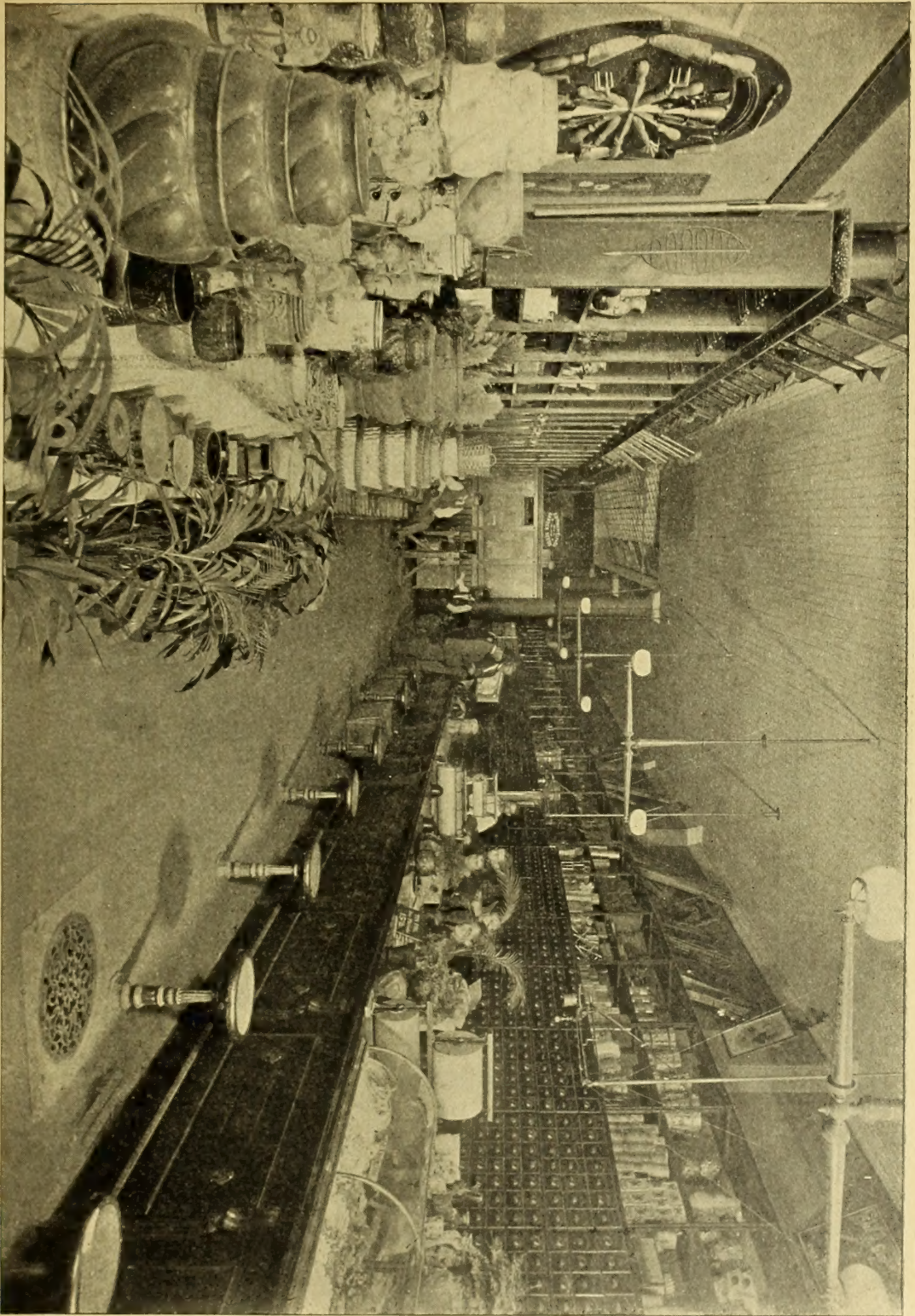
This **Rev. Ezra Ely** was the son of **Rev. Richard Ely**, born October, 1697, who also lived at **Lyme, Conn.**, and had two wives, **Elizabeth Peck** and **Phœbe Hubbard**.

**Rev. Richard Ely, 3d** (the father of **Rev. Ezra Ely**), was the son of **Richard Ely, 2d**, who also lived in **Lyme**, and married **Mary Marvin**; his father was **Richard Ely, 1st**, who came from **Plymouth, England**, in the county of **Devonshire**, in the year **1660**; he came to **Lyme** and settled on the banks of the **Connecticut River** about seven miles from its mouth. He married the daughter of **Col. Fenwick, of Boston**, who owned the great meadows now known as the "**Ely Meadows.**"

In the midst of an active business life **Z. DeFOREST ELY** has found time to devote attention to **fraternal organizations**. He is a life member and **Past Master** of **Lodge No. 51, F. & A. M., Pennsylvania**; life member of **Columbia Chapter, No. 91, Pennsylvania**; a **Knight and Past Eminent Commander** of **St. Alban Commandery, No. 47, K. T.**; a member of **Lu Lu Temple, A. A. O. N. of M. S.**; an honorary member of **The Temple School of Instruction** (Masonic) for services rendered; a **Past Regent** and member of **Delphi Senate, Order of Sparta**; a member of the **Royal Arcanum** and **Ancient Order of United Workmen**, and a **Past Master Artisan** and member of **Artisans Order of Mutual Protection, etc., etc.**—*Florists' Exchange, October 6, 1894.*

1024 MARKET STREET, PHILADELPHIA, PA.

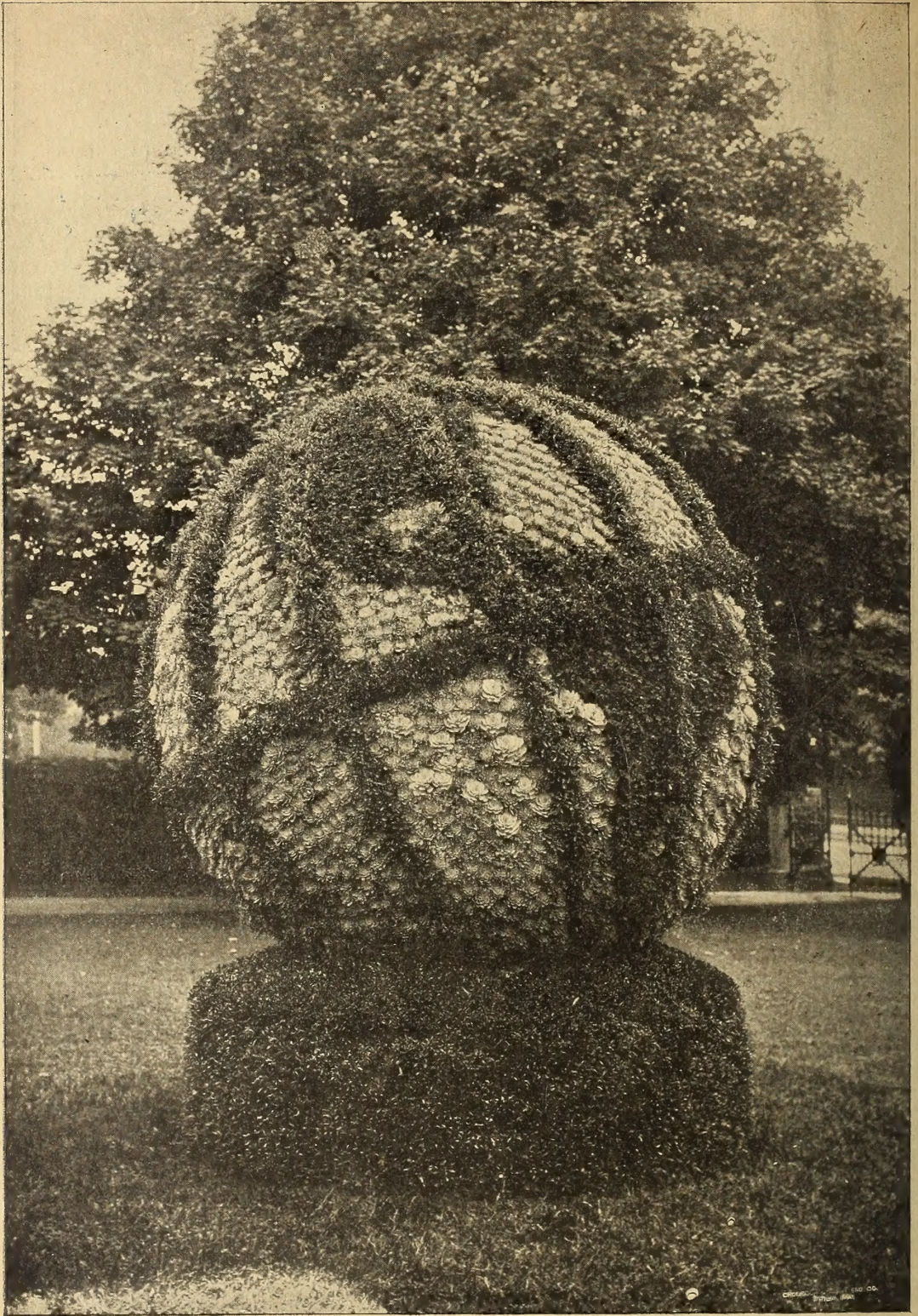
*1024 Market Street and 1023 Marble Street*



**INTERIOR VIEW OF ELY'S SEED STORE**

Showing a depth of 65 feet. Total depth of each of the five floors and cellar, 180 feet. Wholesale Departments in the rear, entrance on Marble Street.

**ELY'S** SEEDS ARE THE BEST



**Z. DeForest Ely & Co.**

Seed Growers, Importers of Bulbs  
and Florists' Supplies

1024 MARKET STREET, PHILA., PA.