



**WILDCAT**



MAINTENANCE  
MADE IN U.S.A.  
CRO CAL. No. 11 001  
103/4



Danbury Public Library  
P.O. Box 218  
Danbury NC 27016



Presented to R. M. Green

by the Wildcat Staff

Evelyn Lloyd

Oatti Thomas

Jane Tuttle

Bill Johnson

Jimmy Casley

Sara Browder

Judy Turner

Katharine Ellington

C. W. Davis, Jr.

Barry Schurr

Jo Anne Rutledge

Ronald White

Lynn Serge

Martha Fowler

Nancy Vernon

Marian Serge

Cheryl Elmont

Joan Tuttle

Linda Hampton

Elizabeth Parks

Judan Southern

Carolyn Stone

Julie Helsabeck

Mary Turner

Binda Kay Neal

Bonnie Bennett

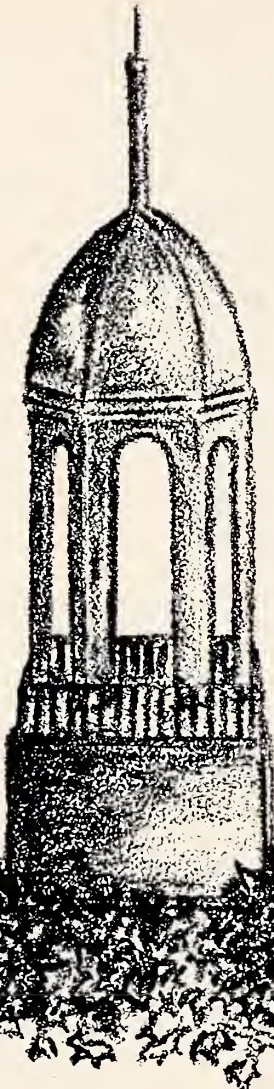
Phyllis Moorefield



# 1963 WILDCAT

Published By  
Annual Staff

WALNUT COVE HIGH SCHOOL  
Walnut Cove, North Carolina



## *Foreword*

As you leave Walnut Cove High School, there are many outstanding things that you wish to remember. This annual is presented as a key--or rather as keys--to the past. In the years to come, each of you can use these keys to unlock your memories--the happy, the sad, the good, the bad--all those things which made up those golden days.

# KEYS TO UNLOCK



## SENIORS



## ACTIVITIES



## ATHLETICS



## THE PAST



The thrill of entering school.



## KEYS TO THE PAST

The first big achievement--  
graduating from eighth grade.







# KEYS TO THE PAST

Those classes--work and more work.





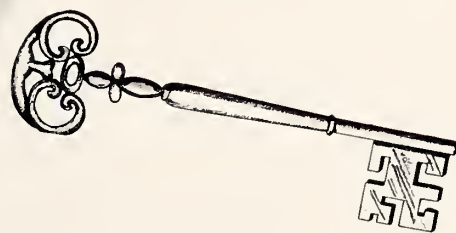
## KEYS TO THE PAST

The all-important activities.





That last minute of leisure.



## KEYS TO THE PAST

The climax -- mixed emotions --  
looking back to the past and forward  
to the future.



## DEDICATION



The annual staff takes pride in dedicating the 1963 Wildcat to Mr. Bobby Woods for his outstanding contributions to our school's athletic program and his untiring work in the classroom.

In this small way we wish to again thank a wonderful teacher for his helping hand in making Walnut Cove a better school.



Mrs. Middleton stressing a point in Latin to JoAnn Rutledge and Ronald White.



Mrs. Gibson and Mr. Lloyd discussing history facts.



Mrs. Goff, Mrs. Lloyd, and Mrs. Fagan conferring on English rules.

Mrs. Lane giving help to Barry Schrum in the bookroom.

Mrs. Freas, Georgia Bolton, Sandra Dunlap, and Judy Mabe in our Home Ec. Dept.



# IN MEMORIAM



**Mr. Howard Johnson**

In memory of Mr. Howard Johnson, who for twenty-five years taught youth the principles of fair play and strong moral character by both instruction and example.

# IN MEMORIAM



**Rayvon Lewellyn**

In memory of Rayvon Lewellyn, who can never be replaced in the hearts of his friends and classmates. It is with pleasure and deep regret that we offer this tribute to him.

# COUNTY ADMINISTRATION



Mrs. Grace Rodenbough  
Elementary Supervisor



Mr. R. M. Green  
County Superintendent



Mr. Raleigh Gibson  
Attendance Officer

Mr. Austin E. Garner  
Secondary Supervisor



## CONGRATULATIONS TO ANNUAL STAFF

Congratulations to each of the Annual Staff for this, your excellent yearbook. It is well and fitting that we record for history the activities of today.

Congratulations to the seniors of '63. May the success achieved to this point be only an incentive to higher and nobler things. Newton D. Baker said, "The man who graduates today and stops learning tomorrow is uneducated the day after."

Best wishes to each of you.

*R M Green*





Mr. R. G. Thomas  
Principal



Mrs. Thomas  
Secretary

TO THE STUDENTS:

The duties and functions of the school are growing on geometrical progression. They have grown from the teaching of the three R's to institutions of specialization and generalization in fitting individuals for a dynamic society in a modern world. The primary responsibility of the school is to help the pupil prepare himself to earn a living and live peacefully with his fellow man. Just as modern inventions and improvements have made the World into one neighborhood, so should man by his acts and deeds make the world into one big brotherhood. Toward such a goal should the school direct its efforts.

This annual is one of many channels through which school spirit is perpetuated and propagated. Congratulations are extended to the Wildcat staff for a hard task well done. May your sleepless nights of the present terminate with pleasant dreams in the future.

Thanks to our advertisers who make this publication possible.

HIGH SCHOOL FACULTY

*R. G. Thomas*



Mrs. Carol Bailey  
Science



Mrs. Elizabeth Gibson  
Social Studies



Mrs. Evelyn Lloyd  
English



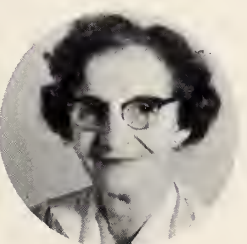
Mr. E. B. Lloyd  
Social Studies



Mr. Bobby Woods  
Mathematics



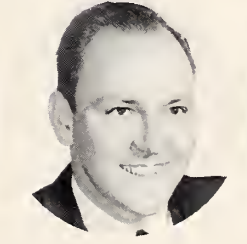
Mr. Howard Leonard  
Driver Education



Mrs. Janie Middleton  
Foreign Language



Mrs. Nina Freas  
Home Economics



Mr. J. E. Reece  
Mathematics



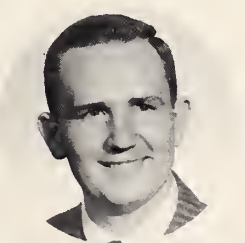
Mrs. Phyllis Goff  
English



Mrs. Dottie Fagan  
English



Mrs. Glenda Lane  
Commercial Studies



Mr. Dwight Thomas  
Agriculture



Miss Virginia Jennings  
Librarian



Mr. Robert Mills  
Band



Mr. Thomas in the shop with Seniors Wayne Reid, Ray Ashby, Rex Bennett, and Harold Bullins.



Mr. Woods and Mr. Reece working on a math problem.



Miss Jennings, C. H. Davis, and Judy Flinchum in our High School Library.



Mr. Leonard explaining to his class the principle of the motor.

Mrs. Bailey with Bill, Jimmy, Wic, John, Bob M. and Bob W. involved in a physics problem.

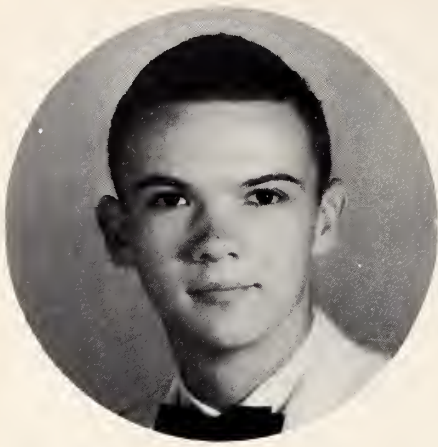


Mr. Mills rehearsing the Senior Band.





CLASSES



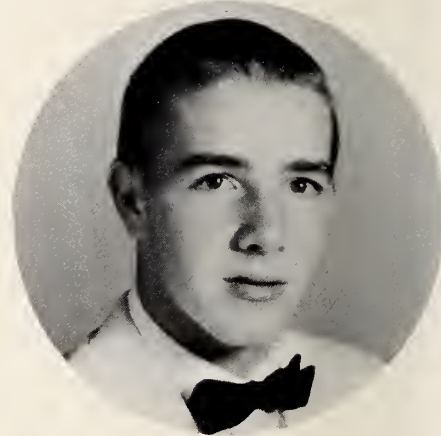
President  
Bill Johnson



Vice President  
Bob Williams



Secretary  
Sandra Dunlap



Treasurer  
Billy Neal

MOTTO  
"We will either find a road  
or make one."

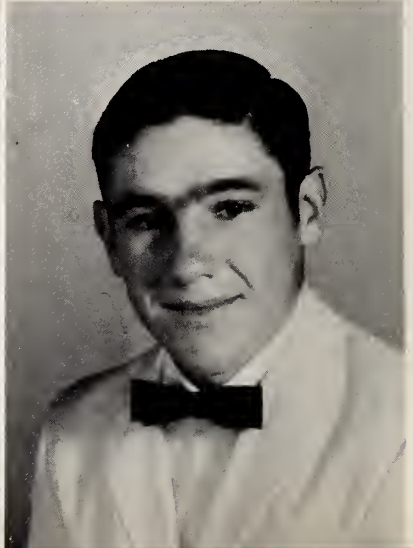
FLOWER  
Carnation

COLOR  
Blue and White

SPENCER RAY ASHBY

ROBERT SWANSON ATKINS

REX CLADY BENNETT





GEORGIA ANN BOLTON



RAYMOND JUNIOR BOOTH

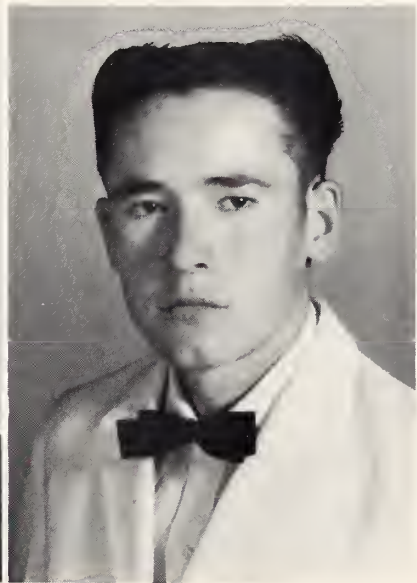


CONNIE KAY BOWMAN

## SENIORS '63



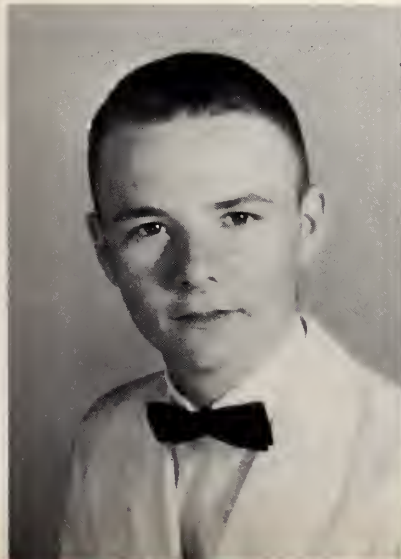
MARTHA CAROLYN BROWN  
HAROLD DANIEL BULLINS

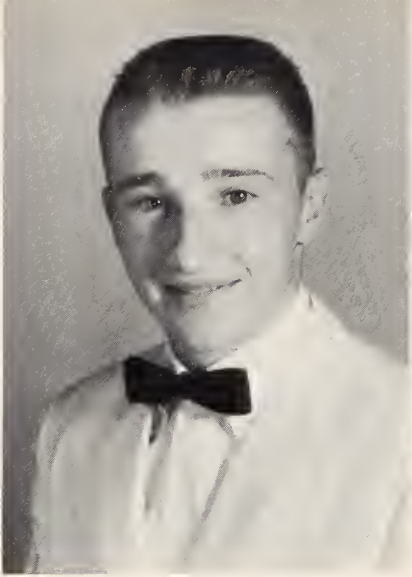


CHARLES HENRY DAVIS, JR.

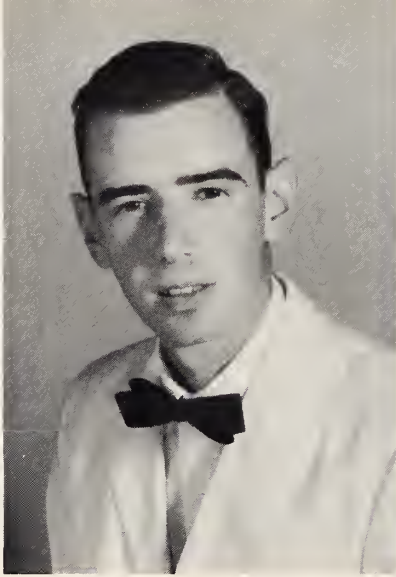
BONNIE GRAY DILLION

SANDRA JANE DUNLAP





JAMES EDWARD EASLEY, JR.



JAMES LONNIE FANSLER, JR.



JUDY CHAPMAN FLINCHUM



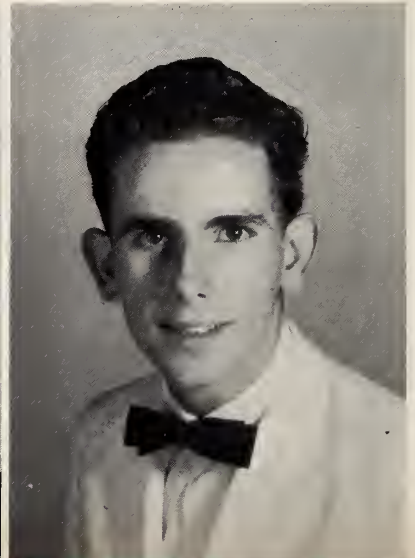
BETTY MARIE HALL



BETTY RUTH HOLDER

## SENIORS '63

JOYCE ETHEL FULTZ  
LAURA FRANCES GRUBBS



JAMES EDWIN HOLT



WILLIAM HOWARD JOHNSON, JR.



INICE VIRGINIA JOYCE

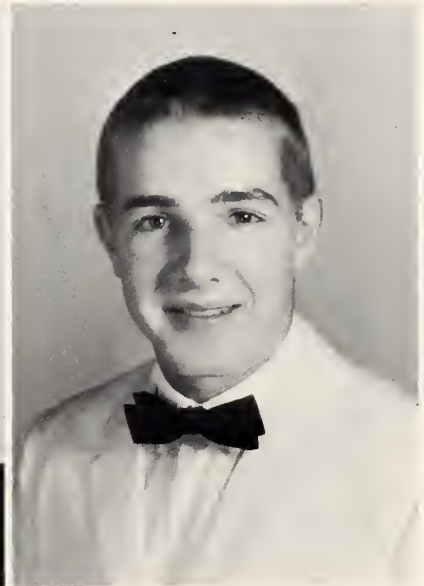


JUDITH ANN MABE

## SENIORS '63



NANCY MABE  
WILLIAM BURTON NEAL

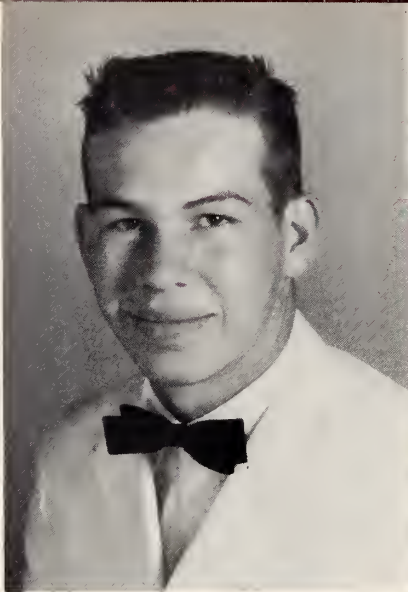


JUDY MITCHELL OAKLEY

HUGH EDMOND PARKS

JOHN RAY PARSON





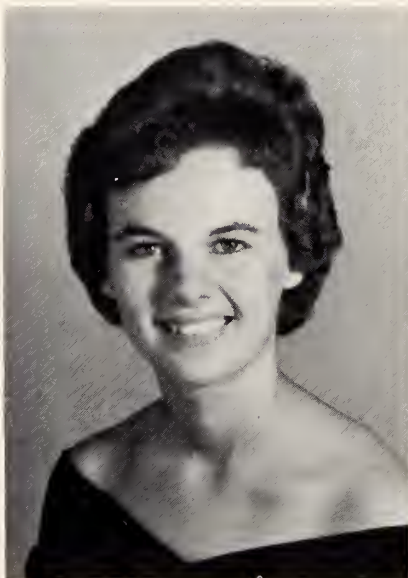
HOWARD WAYNE REID



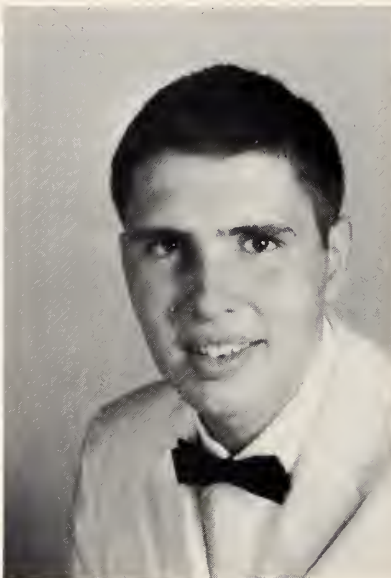
HELEN JEAN ROMINGER



ERNEST AUGUSTUS ROTHROCK



BRENDA SUE SHELTON

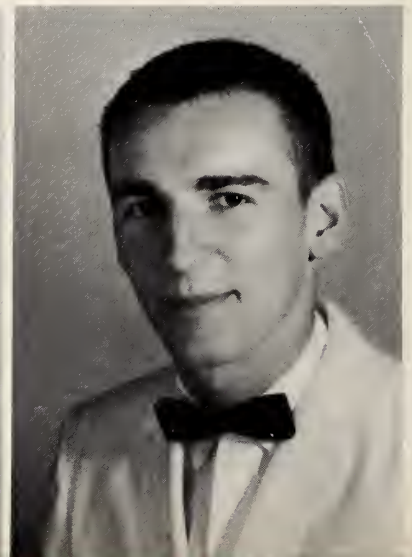


JO ANNE RUTLEDGE  
ERNEST BARRY SCHRUM

## SENIORS '63

ELSIE MAE SIMMONS

DONALD HARTGROVE SMITH







WANDA LOU THOMAS



JOSEPH RICHARD TURBYFILL



JUNE CAROLYN TUTTLE

## SENIORS '63



SHEILIA ANN TUTTLE

RONALD EUGENE WHITE

ROBERT BROWNING WILLIAMS

PAUL OTIS YOUNG, JR.





MASCOTS

Patti Wilson

Ed Dunlop



**MOST ATHLETIC**

**Brenda Shelton**

**Ernie Rothrock**



MOST SCHOOL SPIRIT

Barry Schrum      Connie Bowman



BEST DRESSED

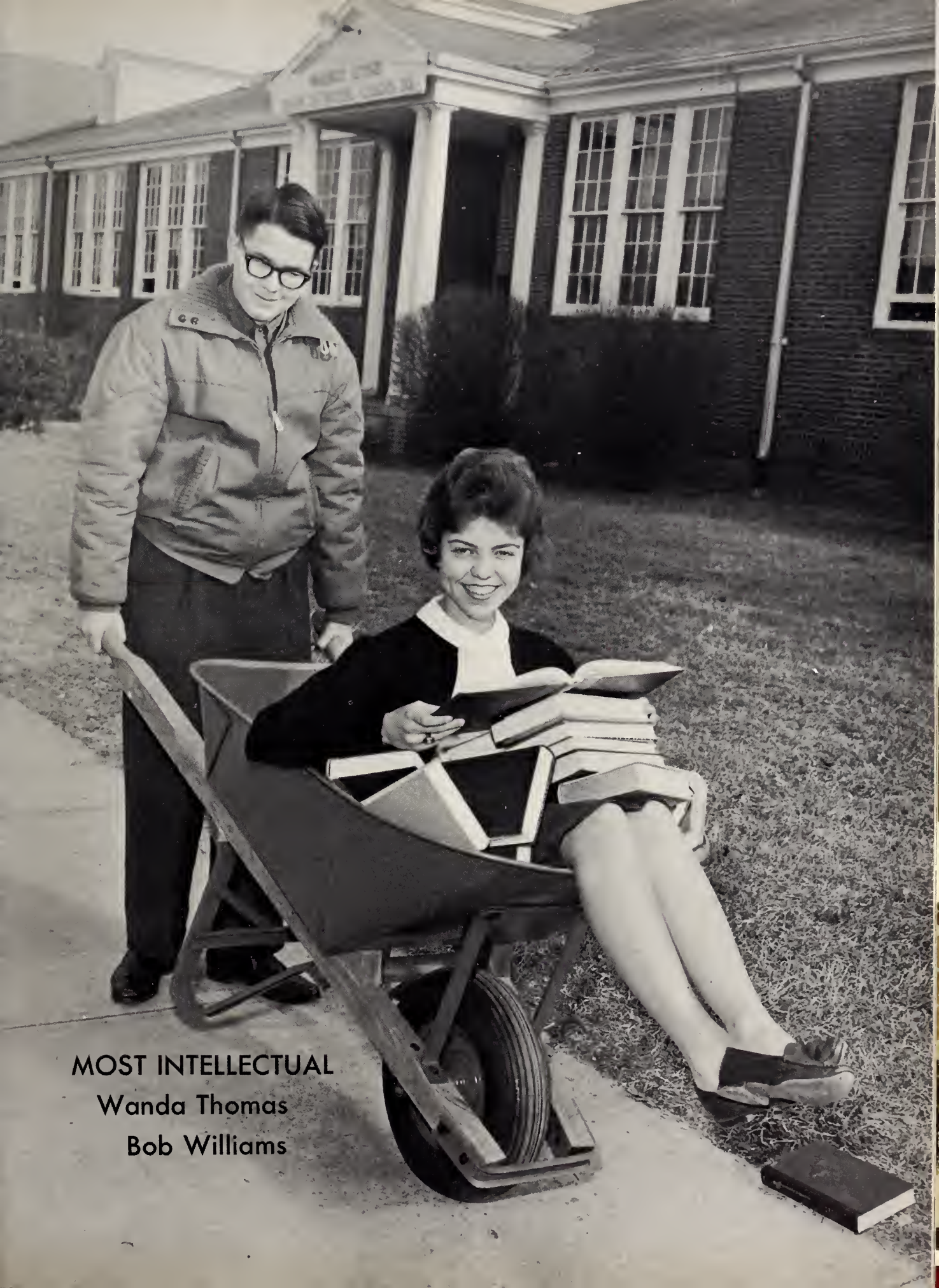
Paul Young

Betty Hall



**MOST POPULAR**

**Barry Schrum. Sandra Dunlap**



**MOST INTELLECTUAL**

Wanda Thomas

Bob Williams



**BEST ALL-AROUND**

Carolyn Brown

Jimmy Easley





**MOST LIKELY TO SUCCEED**  
June Tuttle      Bill Johnson



**BEST LOOKING**

Carolyn Brown

Billy Neal

# SENIOR STATISTICS

## SPENCER RAY ASHBY

F.F.A. 1,2,4; French Club 3,4; Monogram Club 2,3,4; Homeroom Officer 3; Bus Driver 3,4; Baseball 1,4; Football 1,2,3, Co-Captain 4; Junior Play-Stage Crew.

## ROBERT SWANSON ATKINS

F.F.A. 1; Student Council Homeroom Representative 2; Homeroom Officer 2; Glee Club 4.

## REX CLADY BENNETT

F.F.A. 1,2,4; French Club 3,4; 4-H Club 1; Monogram Club 3,4; Baseball 4; Football 3,4; Bus Driver 3,4; Junior Play-Stage Crew.

## GEORGIA ANN BOLTON

Band 1, President 2; Homeroom Officer 2,4; F.H.A. 1,2,3, Vice President 4; Monogram Club 3,4; 4-H Club 1; Paper Staff-Assistant Art Editor 3; Annual Queen Candidate 4; Drivers Training 2.

## RAYMOND JUNIOR BOOTH

4-H Club 1; F.F.A. 1,2,3; Football 4.

## CONNIE KAYE BOWMAN

F.H.A. 1,2; 4-H Club-Vice President 1; Glee Club-Reporter 2; Monogram Club 2,3,4; French Club 3, Program Chairman 4; Homeroom Officer 1,2; Majorette 1,2; Cheerleader 3, Chief 4; Annual Queen Candidate 4; Homecoming Sponsor 4; Superlative "Most School Spirit".

## MARTHA CAROLYN BROWN

Beta Club 3, Reporter 4; Paper Staff-Feature Editor 3, Society Editor 4; Latin Club 2,4, Secretary 3; F.H.A. 1,2, Vice President 3; 4-H Club 2, Vice President 1; Monogram Club 2,3, Vice President 4; Student Council-Recording Secretary 4; Class Officer-Vice President 3; Homeroom Officer 1,3,4; Bus Driver 4; Basketball 1,2,3,4; "All County" 3;

Marshal 3; Halloween Queen Candidate 1; Annual Queen Candidate 4; Superlative "Best Looking", "Best All-Around; Homecoming Queen 4.

## HAROLD DANIEL BULLINS

F.F.A. 1,2,4; French Club 3; Bus Driver 3,4.

## CHARLES HENRY DAVIS, JR.

4-H Club 1; Library Club 2, Treasurer 3, President 4; Monogram Club 3,4; French Club 2; Annual Staff 3, Assistant Business Manager 4; Band 1,2; J.V. Football 1; J.V. Basketball 1; J.V. Baseball 1; Halloween King Candidate 3; Junior Play-Stage Crew; Homecoming Escort 4.

## BONNIE GRAY DILLION

F.H.A. 1,2,3,4; 4-H Club 1; Glee Club 3; French Club 3, Secretary 4; Library Club 3; Drivers Training 2.

## SANDRA JANE DUNLAP

Class Officer-Secretary 4; Homeroom Officer 1; Library Club 1,2; 4-H Club 1,2, Reporter 1; Latin Club 4, Reporter 2, Treasurer 3; Junior Classical League 3,4; Beta Club 3; F.H.A. 1,2; Student Council Homeroom Representative 3; Scorekeeper 2; Annual Staff 1,2,3,4; Paper Staff 1,2, Feature Editor 4; Junior Play; Annual Queen Candidate 4; Homecoming Sponsor 4; Superlative "Most Popular".

## JAMES EDWARD EASLEY, JR.

Beta Club 3, President 4; Library Club 3, Treasurer 2; French Club 4; Latin Club 2,3,4; Junior Classical League 3,4; Annual Staff 4; Class Officer-President 3; Marshal 3; Substitute Bus Driver 3,4; Homecoming Escort 2,3,4; Junior Play; Superlative "Best All-Around".

## JAMES LONNIE FANSLER, JR.

F.F.A. 1,2; Glee Club 1; 4-H Club 1.

# SENIOR STATISTICS

## JUDY CHAPMAN FLINCHUM

F.H.A. 1,4, Parliamentarian 2; 4-H Club 2, Song Leader 1; Library Club-Program Chairman 2, Social Chairman 3, Vice President 4; Glee Club 3; Homeroom Officer 1,2,3; Substitute Cheerleader 3; Drivers Training 2; Junior Play.

## JOYCE ETHEL FULTZ

4-H Club 1,2; Library Club 2,3; F.H.A. 2,3,4; French Club 3; Paper Staff 3,4; Drivers Training 4.

## LAURA FRANCES GRUBBS

F.H.A. 1,2,3,4; 4-H Club 1; Glee Club 3; French Club 3, Treasurer 4; Library Club 3; Drivers Training 2; Junior Play.

## BETTY MARIE HALL

F.H.A. 1,2,3, President 4; Glee Club 1; 4-H Club 1,2; Latin Club 2; Homeroom Officer 4; Halloween Queen 3; Homecoming Sponsor 4; Superlative "Best Dressed".

## BETTY RUTH HOLDER

F.H.A. 2,3,4; 4-H Club 1,2; Glee Club 4; Drivers Training 2; Junior Play.

## JAMES EDWIN HOLT

French Club 2; Glee Club 1,2; 4-H Club 1,2; Flag Bearer 1,2; Drivers Training 2; J.V. Basketball 1; Usher-Junior Play.

## WILLIAM HOWARD JOHNSON, JR.

Monogram Club 2; 4-H Club 1; Latin Club 4, Treasurer 2, President 3; Junior Classical League 3,4; Library Club 2; French Club 4; Student Council-Corresponding Secretary 4; Beta Club 3, Treasurer 4; Annual Staff-Assistant Business Manager 3, Business Manager 4; Marshal 3; Class Officer-President 4; Homeroom Officer 3,4; Football 2; Homecoming Escort 3,4; Junior Play; Superlative "Most Likely to Succeed".

## INICE VIRGINIA JOYCE

F.H.A. 1,2,3,4; 4-H Club 1,2,3; Glee Club 4; Drivers Training 2.

## JUDITH ANN MABE

F.H.A. 1,2,3, Secretary 4; Glee Club 1; 4-H Club 1,2; Latin Club 2; Band 1,2; Junior Play-Usher.

## NANCY MABE

4-H Club 1,2; Library Club 2,3; F.H.A. 2,3,4; Paper Staff 3,4; Glee Club 3; French Club 3; Drivers Training 2.

## WILLIAM BURTON NEAL

Annual Staff 3; Latin Club 2; French Club 3, Vice President 4; Monogram Club 3,4; Student Council Homeroom Representative 3; Class Officer-Treasurer 1,3,4; Football 1,2,3, Co-Captain 4; Baseball 1,3,4; Band 1,2,3, Substitute Bus Driver 3; Bus Driver 4; Junior Play; Superlative "Best Looking".

## JUDY MITCHELL OAKLEY

F.H.A. 1,2,3; Monogram Club 3,4; Latin Club 2,3,4; Program Chairman 2; 4-H Club 1,2,3; Paper Staff 3, Typist 4; Glee Club 1; Library Club, Program Chairman 3; Drivers Training 2; Homeroom Officer 1,3; Class Officer-Reporter 3; Junior Classical 2,3,4; Junior Play.

## HUGH EDMUND PARKS

Latin Club 2,3,4; Junior Classical League 3,4; Monogram Club 2,3,4; 4-H Club 1,2; Student Council Homeroom Representative 4; Homeroom Officer 2; Band 2,3; Football Manager 1; Science Fair Winner-Biology Division 2; Junior Play-Stage Crew.

## JOHN RAY PARSON

Football 2,3,4; Baseball 2,3,4; Glee Club 4; F. F.A. 2.

# SENIOR STATISTICS

## HOWARD WAYNE REID

F.F.A. 1,4; French Club 3,4; Monogram Club 2,3,4; 4-H Club 1; Homeroom Officer 4; Football 1,2,3,4; Junior Play-Stage Crew.

## HELEN JEAN ROMINGER

F.H.A. 1,2,3,4; 4-H Club 1,2; Monogram Club 3,4; Substitute Bus Driver 3; Bus Driver 4; Drivers Training 2.

## ERNEST AUGUSTUS ROTHROCK

Latin Club 2,3,4, Social Chairman 2; Junior Classical League 3,4; Monogram Club 2,3, President 4; Annual Staff 1,2,3; Library Club 1; Homeroom Officer 1,2; Class Officer-Treasurer 2; 4-H Club 1; Band 1; Basketball 2,3,4; Manager 1; Football 1,3,4; Football Manager 2; Baseball 1,3,4; Junior Play-Stage Crew; Superlative "Most Athletic".

## JO ANNE RUTLEDGE

F.H.A. 3; 4-H Club-Secretary 1, Songleader 2; Latin Club 4; Junior Classical League 4; Glee Club 4; Student Council Homeroom Representative 4; Annual Staff 4; Bus Driver 3,4; Drivers Training 2; Class Officer-Secretary 1, President 2; Homeroom Officer 3; Cheerleader 1, 2; Lunchroom Accountant 2; Store Clerk 2; May Day Court 1; Annual Queen Candidate 4; Junior Play-Usher.

## ERNEST BARRY SCHRUM

Latin Club 2,3,4; Monogram Club 2; 4-H Club 1,2,3; Annual Staff 3,4; Paper Staff-Junior High Editor 4; Substitute Bus Driver 4; Band 4; Football 2; Homecoming Escort 4; Junior Play-Stage Crew; Superlative "Most Popular" - "Most School Spirit".

## BRENDA SUE SHELTON

Basketball 1,2,3,4; "All County" 3; Beta Club 3, Corresponding Secretary 4; Marshal 3; Paper Staff 2, Assistant Editor 3, Editor-in-Chief 4; 4-H Club 1,2; Latin Club 4, Songleader 2,3; F.H.A. 1, Songleader 2,3; Substitute Bus Driver 3,4; Monogram Club 2,3,4; Homeroom Officer 1,2,3,4; Class Officer-Secretary 1,3, Reporter 2; Superlative "Most Athletic"; Junior Play-Student Director; Junior Classical League 3,4; Annual Queen Candidate.

## ELSIE MAE SIMMONS

F.H.A. 1,2,3,4; 4-H Club 1,2; Glee Club 4; Drivers Training 3.

## DONALD HARTGROVE SMITH

Latin Club 2,3,4; Junior Classical League 3,4; Band 1,2; Monogram Club 2,3,4; Homeroom Officer 2; 4-H Club 1; Glee Club 4; Football 1,2,3,4; Junior Play.

## WANDA LOU THOMAS

Student Council Homeroom Representative 1, 2, Vice President 3, President 4; Class Officer-President 2; Homeroom Officer 2,3; Monogram Club 3,4; F.H.A. 1; Band 1, President 2, Majorette 3,4; French Club-Treasurer 2, Secretary 3; Beta Club 3, Recording Secretary 4; Scorekeeper 1; Basketball 3; Band Sweetheart 1; Marshal 3; Annual Queen Candidate 4; Homecoming Queen 3; Superlative "Most Intellectual".

## JOSEPH RICHARD TURBYFILL

F.F.A. 1,2,3; 4-H Club 1,2; Monogram Club 3, 4; Drivers Training 2; Bus Driver 3,4; Homeroom Officer 4; Football Manager 2; Junior Play-Stage Crew; Homecoming Escort 4.

## JUNE CAROLYN TUTTLE

Basketball 1,2,3,4, Co-Captain 2; Softball 1; Student Council Homeroom Representative 1, Treasurer 2; Annual Staff-Elementary Editor 2, Assistant Advertisement Editor 2, Assistant Editor 4; Class Officer-Secretary 2; Beta Club 3, Vice President 4; Paper Staff 3,4; Latin Club 3, Social Chairman 4; Junior Classical League 4; Monogram Club 4; 4-H Club 1, President 2, Club Representative 2, County 4-H Health Queen 2; Assembly Songleader 2; Science Winner 1, County Winner 1; Storeclerk 2; Lunchroom Accountant 2; Drivers Training 2; Substitute Bus Driver 3,4; Teachers' Assistant 4; Halloween Queen Candidate 2; May Court 2; Homecoming Attendant 2, Homecoming Sponsor 4; Marshal 3; Junior Play; Annual Queen Candidate 4; Superlative "Most Likely to Succeed."

# SENIOR STATISTICS

## SHELIA ANN TUTTLE

4-H Club 1,2; Latin Club 2,4; Glee Club 2,4; F.H.A. 1,2,3, Treasurer 4; Class Officer-Reporter 4; Usher-Junior Play; Halloween Queen Candidate 2,4; Annual Queen Candidate 4; Homecoming Sponsor 4.

## RONALD EUGENE WHITE

F.F.A. 3; 4-H Club 1,2; Latin Club 4; Junior Classical League 4; Glee Club 4; Paper Staff 4; Library Club 1; Class Officer-Treasurer 2; Homeroom Officer 4; Drivers Training 2; Bus Driver 3,4; Lunchroom Assistant 2; Basketball 2; Usher-Junior Play; Homecoming Escort 4; Halloween King Candidate 1,2,4.

## ROBERT BROWNING WILLIAMS

4-H Club 1; Secretary 2; Monogram Club 3,4;

Library Club 3,4, President 2; Latin Club 3,4, President 2; Junior Classical League 3,4; Beta Club 4; Class Officer-Reporter 3, Vice President 4; Homeroom Officer 2,3; Chief Marshal 3; Master of Ceremonies Junior Halloween Carnival 3; Master of Ceremonies Junior-Senior Prom 3; Science Fair Winner-Physical Division 3; Junior Play; Superlative "Most Intellectual".

## PAUL OTIS YOUNG, JR.

F.F.A. 1,2,3; French Club 3; 4-H Club 1,2; Glee Club 4; Monogram Club 2,3,4; Homeroom Officer 1,2; Student Council Homeroom Representative 1; Drivers Training 2; Bus Driver 3; Football 1,4; Baseball 1,2,3,4; Science Winner-Biology Division 2; Superlative "Best Dressed".



# SENIOR CLASS HISTORY

1959--Seventy-nine new freshmen entered high school. Changing classes was an entirely new adventure for all, but we found it fun, exciting, (and, we'll have to admit, a bit confusing too.) Mrs. Gibson and Mr. Reece were our homeroom teachers.

1960--Our sophomore year had begun. By this time we were "old pros" at changing classes, and we did not fail to let the new freshmen feel their inexperience. As sophomores we had to work harder than ever before. Could we ever forget staying up till the "wee hours" cramming for those biology tests? Our homeroom advisors were Mrs. Bailey and Mr. Flowers.

1961--Juniors at last. What a rough, wonderful, busy year! This year our school was privileged to have the students from German-ton join our student body. They so quickly became a part of us that it hardly seemed possible that we had been together only two years. This year provided us with so many fond memories. We all felt proud of the eight new Betas who were initiated from our class in the fall. For the first time the Halloween Carnival was at the gym. It was a great success, and we juniors could not help but feel especially proud that our own candidate for Halloween Queen, Betty Hall, won. "Great Caesar's Ghost!" What's that? The junior play, of course, and this turned out to be a highly successful venture, too. This year our class flowers, colors, and motto were selected. The girl's basketball team was first runner-up in the county tournament. We certainly were proud of the girls and especially the two, (Carolyn Brown and Brenda Shelton) that we contributed who made "all county."

Then there was the day that we were measured for class rings and that day in assembly when the marshals were announced. May 4, the night of our Junior-Senior Prom, was a wonderful night that we shall all long remember. Our theme was "Sentimental Journey" and everyone had a marvelous time. Mrs. Lloyd and Mrs. Middleton were our helpful advisors.

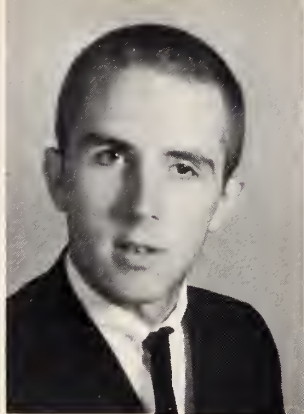
1962--Our last year, the climax of our whole school career, had finally begun. Class rings arrived a week after school began--and what a welcomed arrival! All of us were so proud of our rings and showed them to everyone. Class officers were elected early in the fall. Homecoming was especially "special" for us seniors. The eight seniors on the football team were honored and recognized, and one of our own classmates, Carolyn Brown, was crowned Homecoming Queen. Senior superlatives and mascots were elected by the class. Mr. Lloyd was the homeroom advisor for the senior boys. Mrs. Parker was the girl's advisor, but we could not forget Mrs. Thomas, Mrs. Tuttle and Mrs. Fagan, who substituted for Mrs. Parker when she was in the hospital.

Soon we shall all be graduating and our school days will be only memories. Each will be going his own separate way. We wish to express our sincerest appreciation to our teachers, principal, superintendent, and parents who have made us what we are today. Thank you so much for these years that have given us so many wonderful memories that we shall always cherish.

Class Historian  
Wanda Thomas



President  
Bob Moorefield



Vice President  
Wic Dunlap



Secretary  
Yvonne Lewis



Treasurer  
Lynn Serge



Dottie Ashburn



Bill Bennett



Mary Alice Bennett

## JUNIOR CLASS

Shirley Bennett

Carrie Boles

Glenda Boles

Virginia Bowden

John Brame







Sara Browder

Marie Brown

Alton Bullins

Linda Cardwell

Dexter Carroll

# JUNIORS



Judy Cook

Wic Dunlap

Katharine Ellington

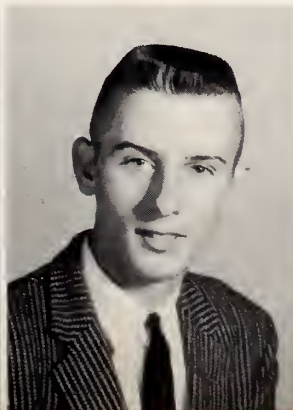
Barry Flinchum

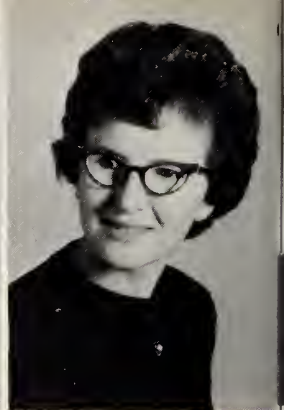
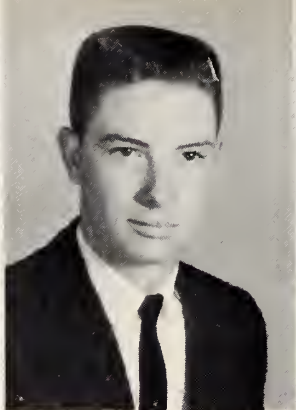
William Fulp

Brooksy Green

Judy Hall

Carl Hicks





Bonnie Huffines

Patsy James

Vicky Johnson

Johnny Joyce

Doris Lawson



# JUNIORS

Margie Lawson

Joe Lewis

Yvonne Lewis

Travis Mabe

Mary Mitchell

Bob Moorefield

Linda Murray

Elaine Nelson





Pam Pepper



Linda Priddy



Pam Priddy



Gloria Reid



Joel Richardson

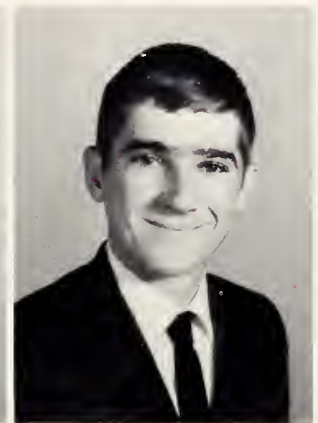
# JUNIORS



Jesse Sams



Lynn Serge



Doug Smith

Kaye Smith

Vicki Smith

Mildred Southern

Bill Taylor

Patti Thomas





Judy Turner



Joan Tuttle



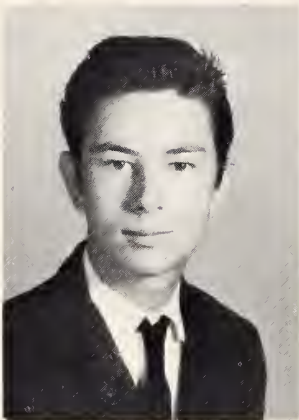
Melvin Tuttle



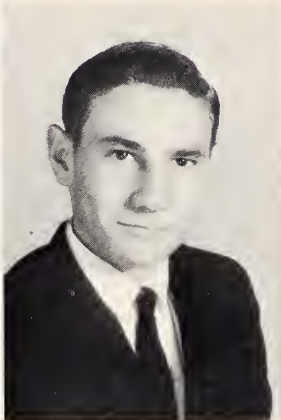
Peggy Wagoner



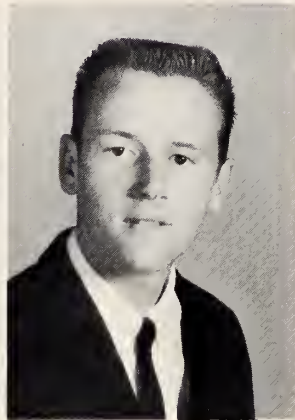
Dianne Williams



Kenneth Wood



James Yarborough



Donald Young

## JUNIORS

Vicki Ziglar







President  
Boyce Harvey



Vice President  
Jean Neal



Secretary  
Bill Neal



Treasurer  
Pam Mendenhall

## SOPHOMORE CLASS



Tonnie Abbot  
Bobbie Adkins  
Jeff Adkins  
Gary Alley



Margaret Ashby  
Shirley Bailey  
Jeanette Boles  
Lola Mae Boles

# SOPHOMORES

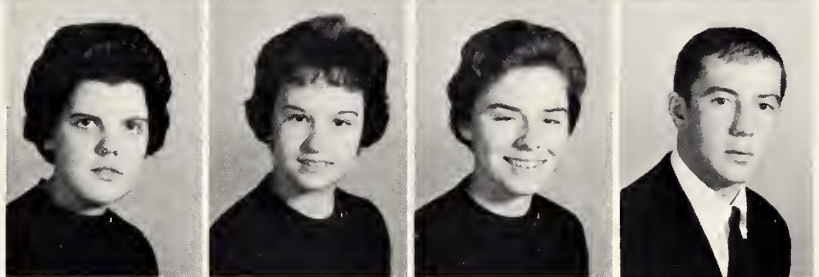
Brenda Bolton  
James Booth  
Jimmy Booth  
Nelda Bowman



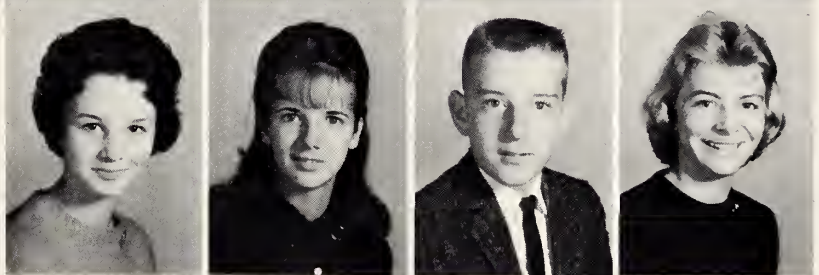
Terry Bullin  
Brenda Bullins  
Carolyn Bullins  
Bronna Cook



Sharon Chatman  
Betty Delapp  
Brenda Dodson  
Mike Donaldson



Brenda Duggins  
Doris Duggins  
Eddie Easley  
Brenda Fagg



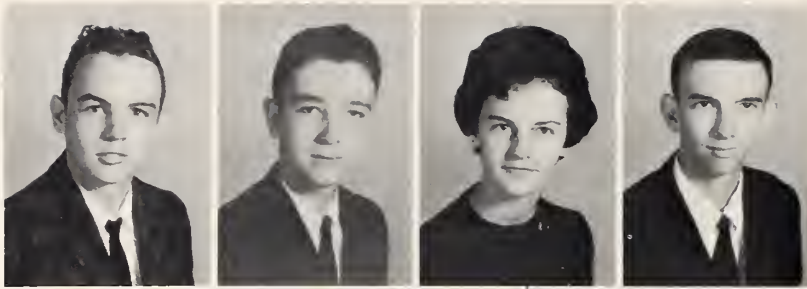
Fern Fallin  
Cheryl Flynt  
Betty Fowler  
Martha Fowler



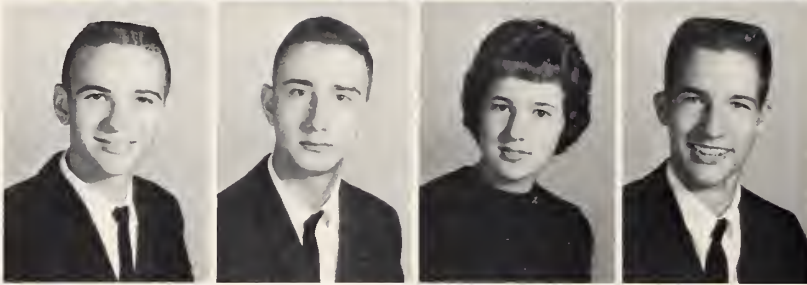
Janie Fulk  
Nellie Fulp  
Sandra Griffin  
Linda Kay Hampton



# SOPHOMORES



Donnie Harris  
Boyce Harvey  
Sarah Hawkins  
Monroe Heath



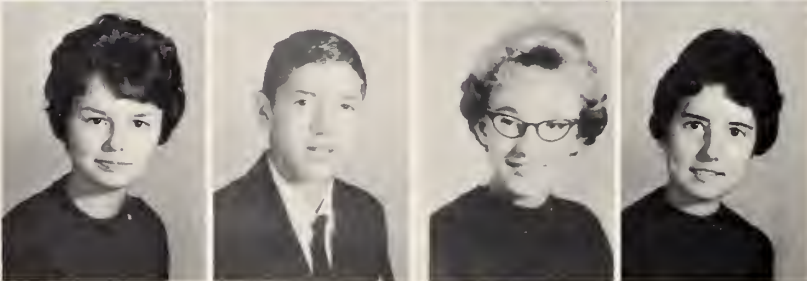
Billy Joe Hill  
Charles Jones  
Maxine Knight  
Ronnie Knight



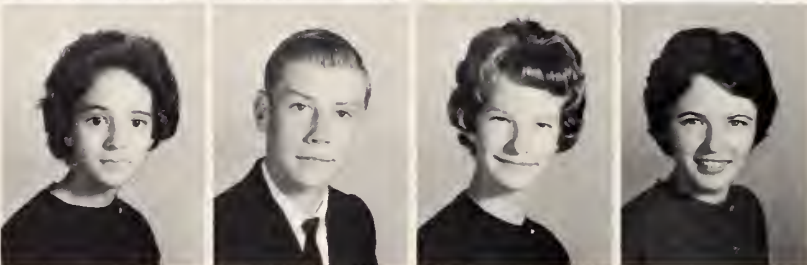
Pam Lewellyn  
Barbara Mabe  
Lucille Mabe  
Elmer Manuel



Judy Manuel  
Pam Mendenhall  
Jerry Montgomery  
Doug Moorefield



Myra Moorefield  
Bill Neal  
Jean Neal  
Linda Neal



Elizabeth Parks  
Garland Pruitt  
Ann Redman  
Ruby Redman



# SOPHOMORES

Ann Richardson  
Eddie Richardson  
Jane Robertson  
Ralph Rominger



Dorothy Scott  
Judy Seaman  
Marian Serge  
Otha Shelton



Susie Simmons  
Judy Simmons  
Donnie Smith  
Doris Smith



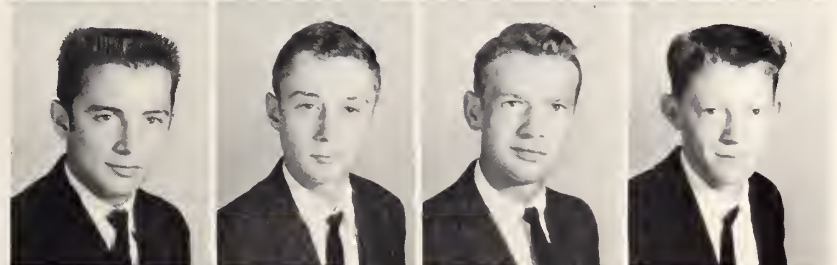
Eugene Smith  
Herbert Smith  
Jimmie Jean Smith  
Larry Smith



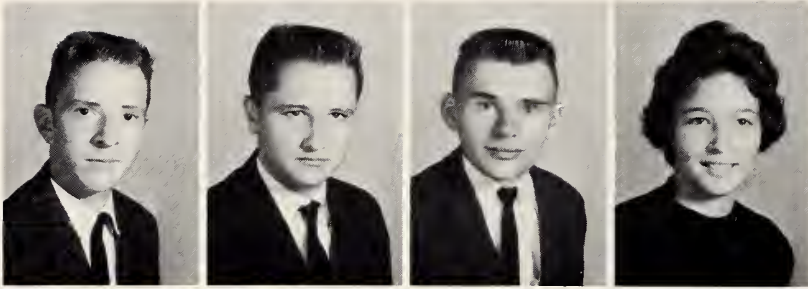
McRae Smith  
Phyllis Smith  
Sylvia Smith  
Kay Smoot



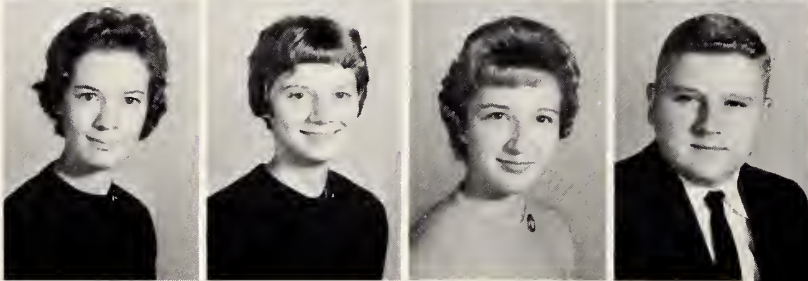
Roy Southern  
Anthony Spencer  
Johnny Spencer  
Wayne Stephens



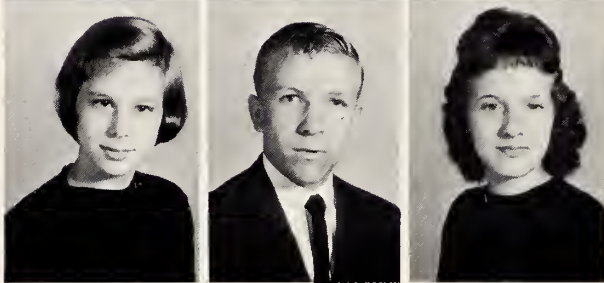
# SOPHOMORES



Larry Tedder  
Bill Tesh  
Darryl Throckmorton  
Dianne Throckmorton



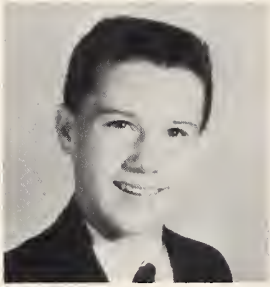
Terrie Throckmorton  
Mary Turner  
Rae Ann Tuttle  
Joe Valentine



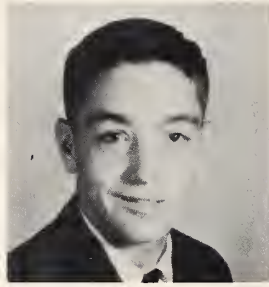
Nancy Vernon  
Hanes Watts  
Kathy Williams







President  
Mike Smith



Vice President  
Gil Lindsey

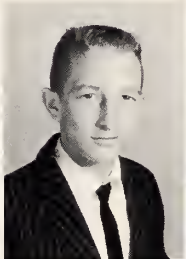


Secretary  
Cynthia Shelton



Treasurer  
Richard Davis

## FRESHMEN



Dan Abbott  
Ronnie Ashby  
Nancy Atkins  
Ann Beasley  
Bonnie Bennett



Jimmy Bennett  
Stephanie Blalock  
Kaye Bolden  
Larry Boles  
Betty Booth



Carolyn Bowden  
Elaine Bowden  
Martha Bowden  
Darlene Brim  
Stonie Bowman

# FRESHMEN

Richard Davis  
Betty Durham  
Lorene Fallin  
Ann Farmer  
Judy Fletcher



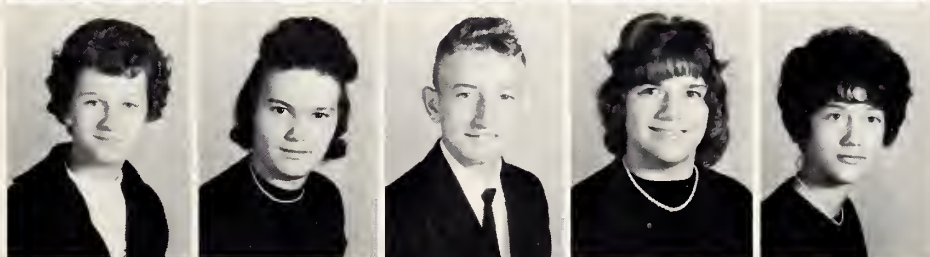
Alex Flinchum  
Joe Fulp  
Carol Fultz  
Buddy Gibson  
Larry Hall



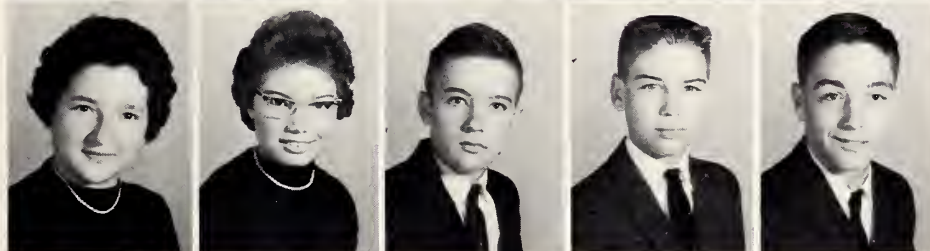
Clyde Hall  
Judy Hamlin  
Doris Hayden  
Julie Helsabeck  
Linda Hicks



Kaye Hooker  
Betty Hubbard  
Haywood Hutcherson  
Terry Johnson  
Brenda Jones



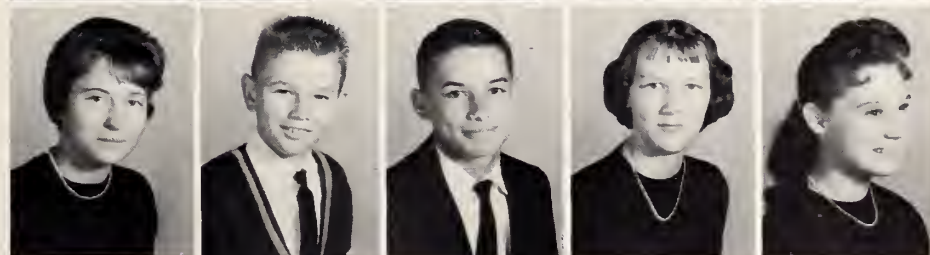
Jackie Jones  
Kaye Joyce  
Mike Joyce  
Paul Loftis  
Gil Lindsey



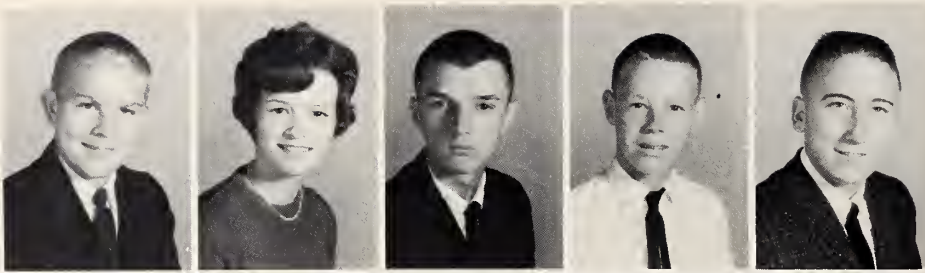
Linda Logan  
Gary Loret  
Doris Mabe  
Helen Mabe  
Keith Mabe



Maxine Mabe  
Roger Mabe  
Russell Mabe  
Sarah Mabe  
Linda Marshall



# FRESHMEN



Jerry Mitchell  
Phyllis Moorefield  
Ken Neal  
Gilbert Priddy  
Don Richardson



Terry Robertson  
Brenda Sain  
Joe Sandidge  
Richard Serge  
Cynthia Shelton



Allen Smith  
Ann Smith  
Brenda Smith  
Cero Smith  
Don Smith



Hilda Smith  
Kaye Smith  
Linda Smith  
Lorella Smith  
Mike Smith



Susie Smith  
Susan Southern  
Carolyn Stone  
Tim Sykes  
Larry Tedder



Gerry Throckmorton  
Jerry Tilley  
Brenda White  
Nancy Wilkens  
Jerry Williams



Jane Willis  
Virginia Wilson  
Golda Young  
Wilette Young



# ACTIVITIES



Advisor: Mrs. Bailey



President: Wanda Thomas

# STUDENT COUNCIL







President: Jimmy Easley  
 Vice President: June Tuttle  
 Rec. Secretary: Wanda Thomas  
 Treasurer: Bill Johnson  
 Cor. Secretary: Brenda Shelton  
 Reporter: Carolyn Brown

NATIONAL

BETA CLUB—

WALNUT

COVE

CHAPTER



Advisor: Mrs. Middleton



Patti Thomas



John Brame



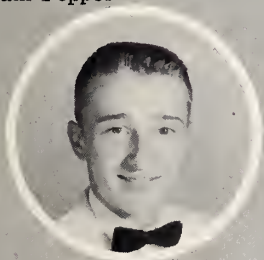
Pam Pepper



Judy Turner



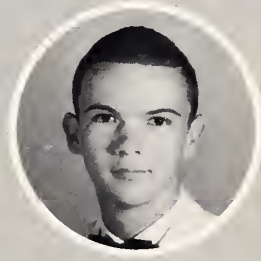
Doris Lawson



Jimmy Easley



Wanda Thomas



Bill Johnson



Katharine Ellington



Bob Moorefield



Carrie Boles



Sara Browder



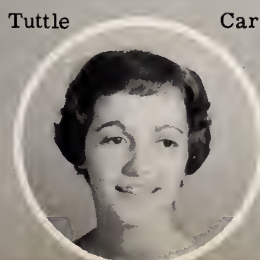
Lynne Serge



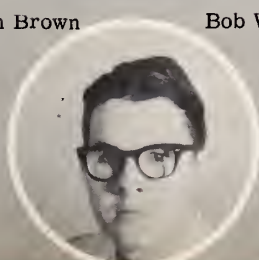
Brenda Shelton



June Tuttle



Carolyn Brown



Bob Williams

# MARSHALS



Wanda Thomas



Bill Johnson



Carolyn Brown



June Tuttle



Brenda Shelton



Jimmy Easley



Bob Williams, Chief

# THE COVE



Editor, Brenda Shelton



Advisors,  
Mrs. Gibson and Mrs. Goff

# PAPER STAFF



# FRENCH



FFA



FHA





**LIBRARY CLUB**



**MONOGRAM CLUB**



## WALNUT COVE BAND



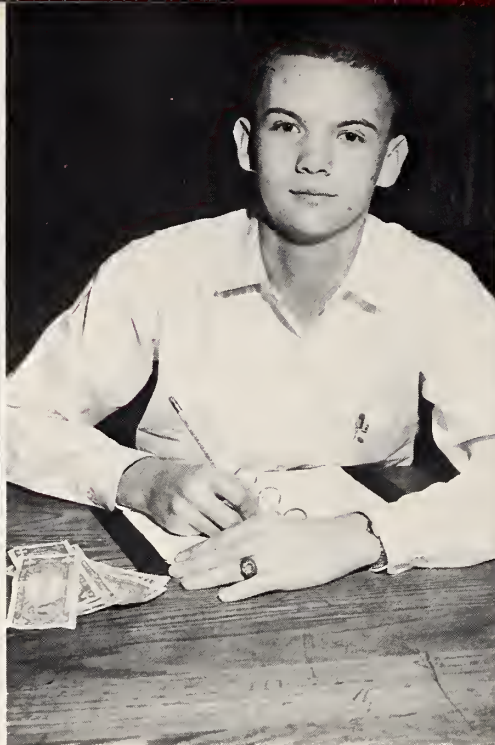
Majorettes and Drum Major



Band Director  
Mr. Robert Mills



Editor: Patti Thomas



Business Manager: Bill Johnson



Editor: Pam Pepper



Assistant Business  
Manager: C. H. Davis

Assistant Editor:  
June Tuttle



Advisor: Mrs. Evelyn Lloyd







## ANNUAL STAFF





**BUS DRIVERS**

**LUNCHROOM WORKERS**





## SCENES FROM CLUBS



**HOMECOMING QUEEN**

Miss Carolyn Brown



Attendant  
Miss Sara Browder

Miss Wanda Thomas,  
1962 Homecoming Queen,  
crowning Miss Carolyn  
Brown, 1963 Homecoming  
Queen.



Attendant  
Miss Lynn Serge



Sponsors and Senior Football Players





**ANNUAL QUEEN**

June Tuttle



Georgia Bolton  
Connie Bowman  
Carolyn Brown  
  
Sandra Dunlap



## ATTENDANTS

Jo Anne Rutledge  
Brenda Shelton  
Wanda Thomas  
Shelia Tuttle





Patti Thomas

## BAND SWEETHEART

## HALLOWEEN QUEEN AND KING



Rae Ann Tuttle: Queen

Richard Davis: King



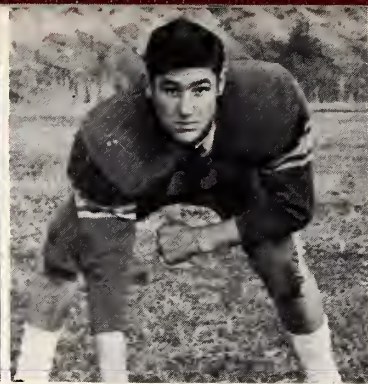
WALNUT COVE  
HIGH SCHOOL CLASS '5



ATHLETICS



Ernie Rothrock



Rex Bennett



Don Smith



Mac Rae Smith

# FOOTBALL



Coach- Mr. Woods  
Co-Captains- Billy Neal  
Ray Ashby



Doug Moorefield

Bob Bowden

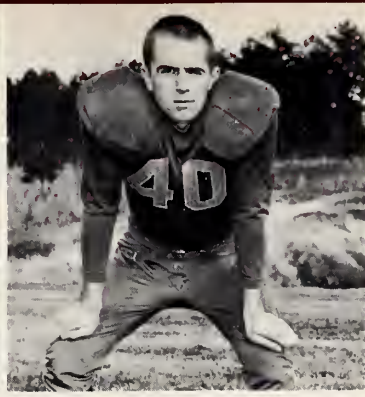
Bill Neal

Eugene Smith





Ronnie Knight



Wic Dunlap

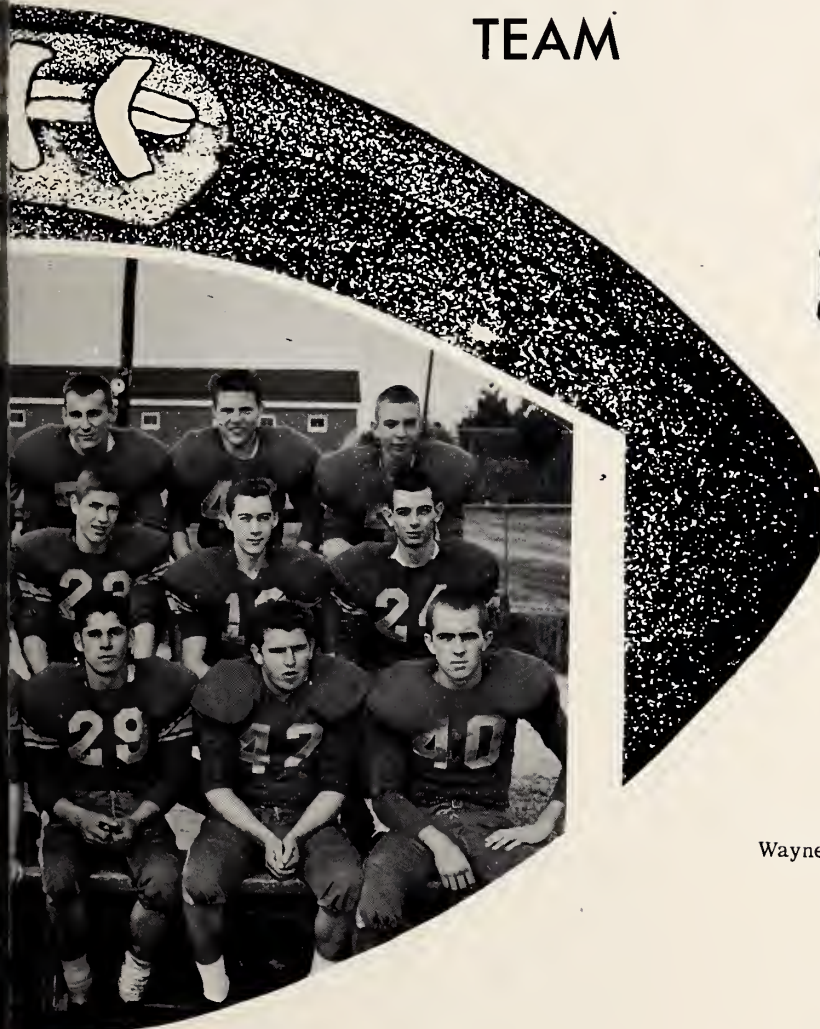


John Brame



Gil Lindsey

# TEAM



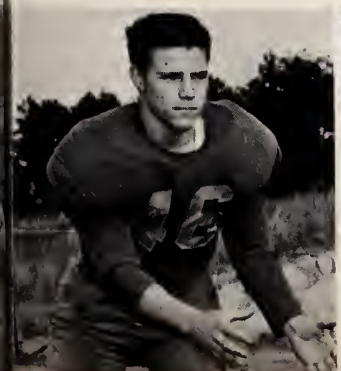
Wayne Reid

John Parsons

Larry Smith

Raymond Booth

Bob Moorefield





Carolyn Brown



Susan Southern



Marian Serge



Lynn Serge



Martha Fowler



Katharine Ellington



Pam Mendenhall



Mary Turner



Brenda Shelton

Carolyn Brown

Co-captains



Brenda Sain



Patti Thomas



Carolyn Stone



Ann Smith

Cynthia Shelton

Brenda Shelton

Phyllis Moorefield



Linda Neal

# GIRLS BASKETBALL TEAM



Coach-Mr. Woods



Scorekeeper-Judy Turner  
Manager-Phyllis Smith



Jeff Adkins



Donald Tuttle



Ronnie Knight



Ronald Tuttle



Doug Moorefield



Mike Donaldson



Bob Moorefield



Haywood Hutcherson



Buddy Gibson



Joel Richardson



Eugene Smith



Ronnie Ashby



Wic Dunlap



Mike Smith



Gil Lindsey

# BOYS BASKETBALL TEAM

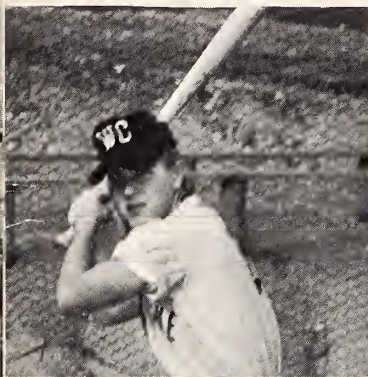


Coach-Mr. Woods

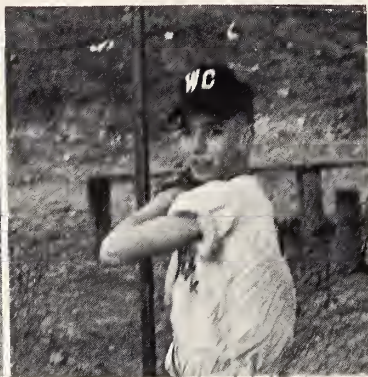


Co-captains  
Ernie Rothrock  
Wic Dunlap

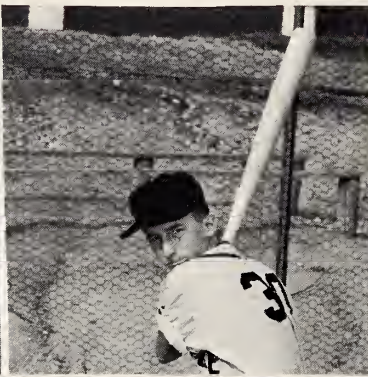
# BASEBALL



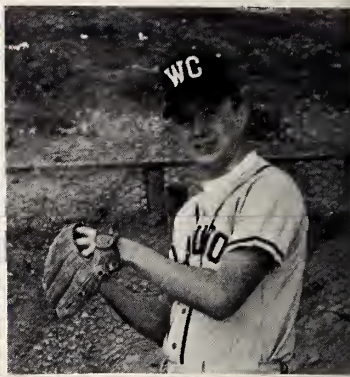
Billy Neal



Ernie Rothrock



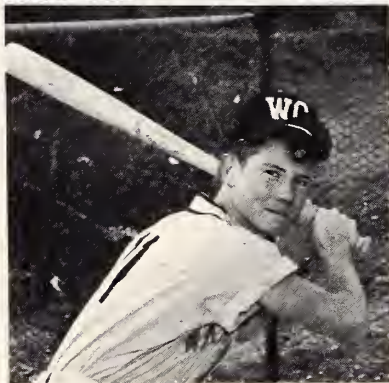
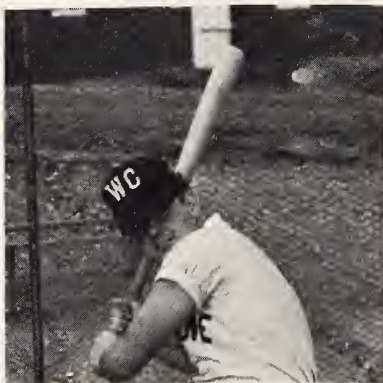
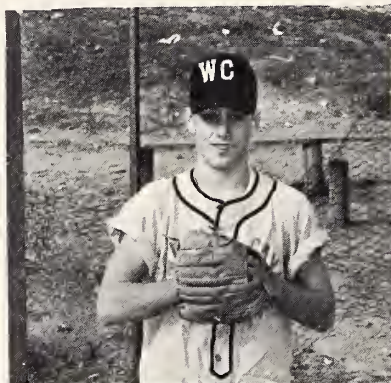
Larry Boles



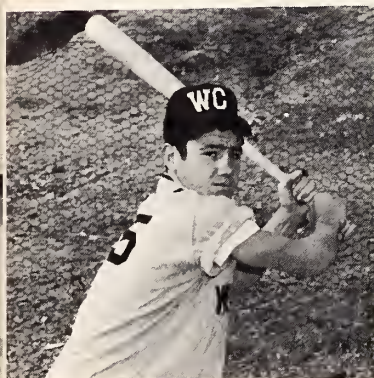
Eugene Smith

Gil Lindsey

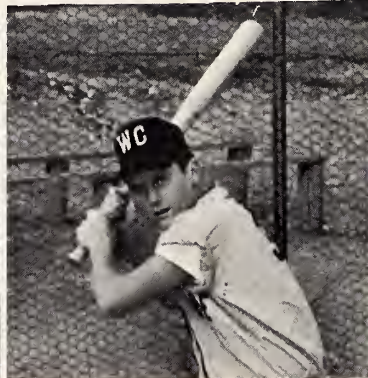
Ray Ashby



Donnie Scott



Rex Bennett



Donald Young



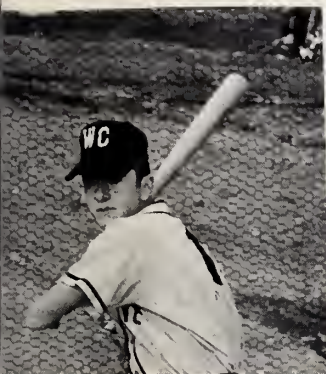
John Parsons



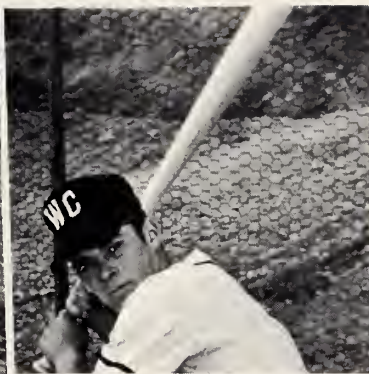
Joel Richardson



# TEAM



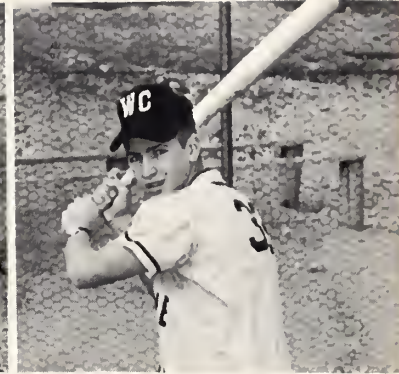
Larry Tedder



Larry Smith



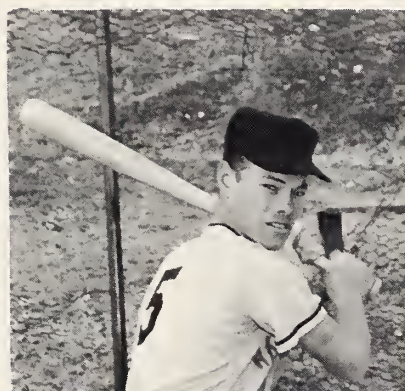
Terry Bullins



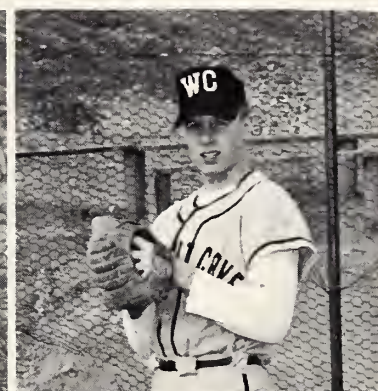
Bill Neal

Ralph Rominger

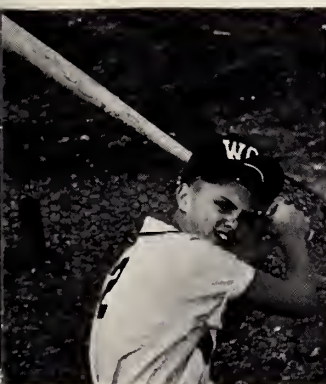
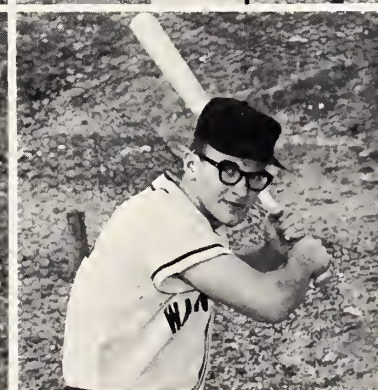
Bob Moorefield



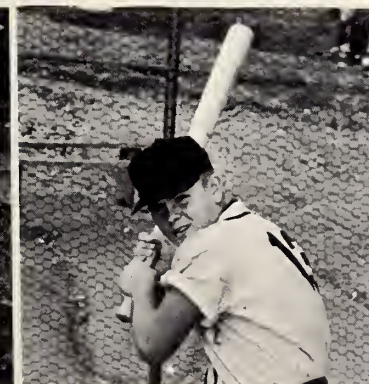
Mike Smith



Barry Flinchum



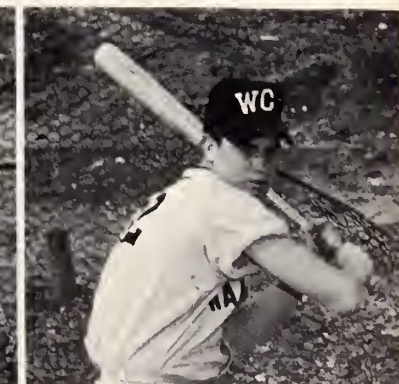
Joe Sandidge



Jerry Mitchell



Buddy Gibson



Johnny Joyce

# 1962-63 CHEERLEADERS



# 1962-63 CHEERLEADERS



Chief: Connie Bowman  
Co-chief: Pam Pepper



Nelda Bowman, Sara Browder, Julie Helsabeck



Kay Smoot, Sandra Griffith





JUNIOR HIGH

# JUNIOR HIGH



Mrs. Claudia Brame



Mrs. Rebecca Donaldson



Mrs. Edna Forrest



Miss Faye Collins



Mr. Edward Freas



Mrs. Helen Marshall

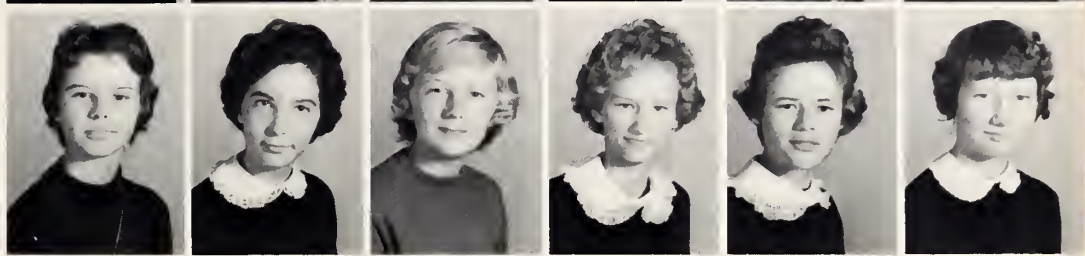
# JUNIOR HIGH FACULTY



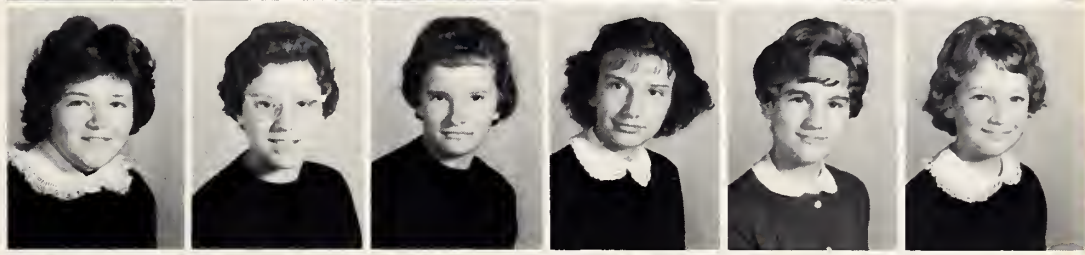
Dottie Atkins  
 Annie Booth  
 Mary Norman Dunlap  
 Nancy Ellington  
 Kay Ellis  
 Sharon Fagg



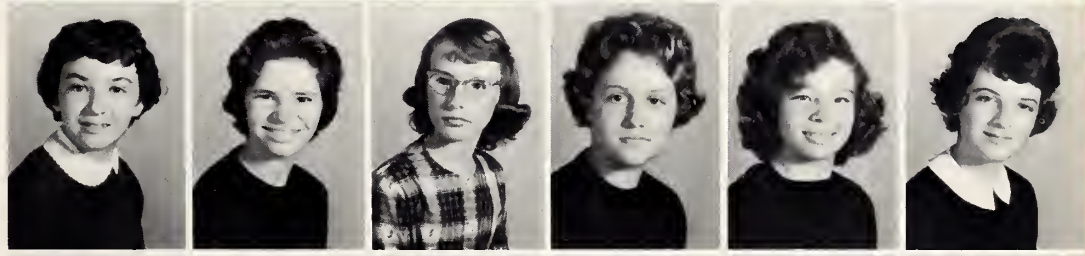
Elizabeth Fulk  
 Wanda Gibson  
 Kathy Green  
 Norma Jean Hayden  
 Barbara Hicks  
 Geraldine Hill



Linda James  
 Barbara Mabe  
 Becky Martin  
 Marilyn Martin  
 Hannah Mitchell  
 Sue Redmon



Becky Roberts  
 Kathy Robins  
 Monnie Shelton  
 Martha Sutphin  
 Evelyn Tilley  
 Donna Tuttle



Connie Wilkins  
 Carolyn Bennett  
 Ethel Bullins  
 Gaynelle Bullins  
 Audrey Cook  
 Nancy Kay Hicks



Peggy Hicks  
 Sylvia Holland  
 Margaret Holt  
 Mary James  
 Calen Johnson  
 Carolyn Johnson

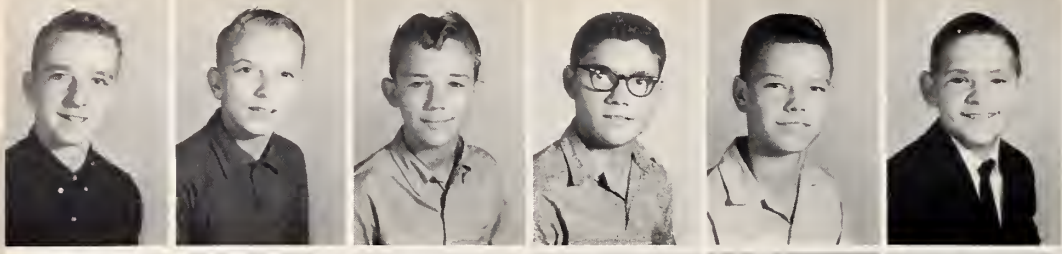


Judy Mabe  
 Frances Neal  
 Julia Pruitt  
 Brenda Kay Ring  
 Bobbie Smith  
 Faye Smith

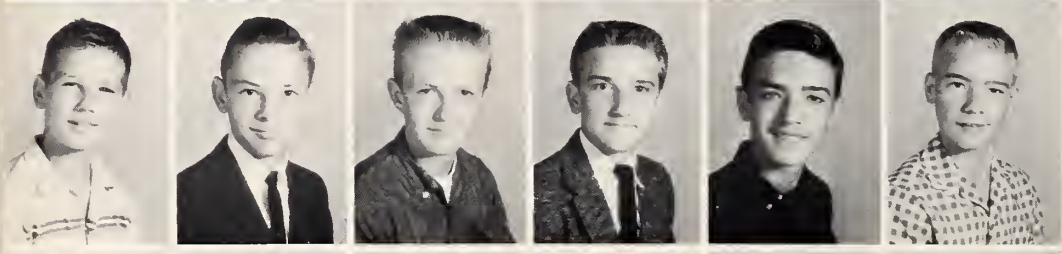


Linda Smith  
 Margaret Smith  
 Linda Williams  
 Frances Yates  
 Donnie Ashby  
 Mike Brown

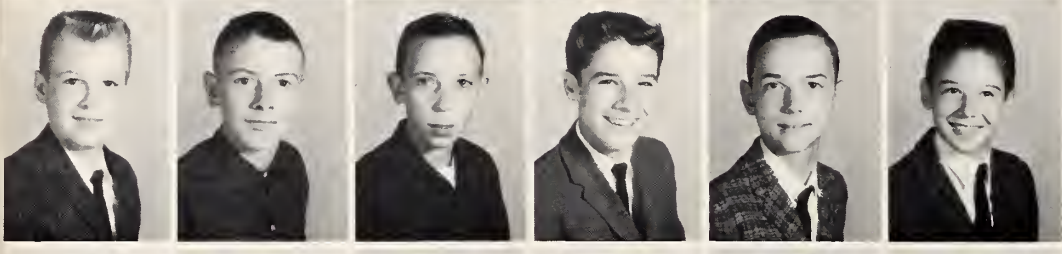




Phil Bullins  
 William Bullins  
 Mike Farmer  
 Larry Flinchum  
 W. C. Flinchum  
 Roger Hall



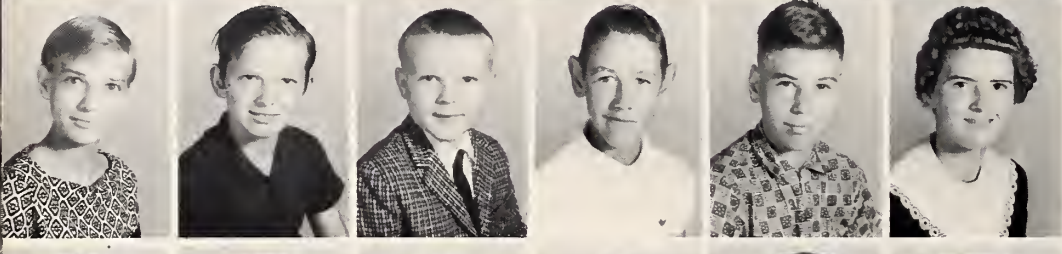
Ronnie Headrick  
 James Holland  
 James Joyce  
 James Lewis  
 Charles Mabe  
 Tim Morgan



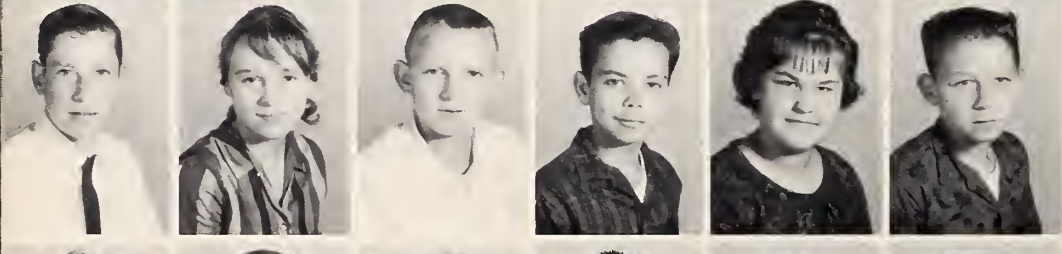
Rocky Orrell  
 Wayne Scott  
 James Simmons  
 Tommy Southern  
 Mike Stone  
 Bobby Wall



Barbara Alley  
 Jewel Bennett  
 Susan Bennett  
 Danny Bibey  
 Kenneth Boles  
 Roger Bullin



Brenda East  
 Buster Fulp  
 Roger Green  
 Archie Harger  
 Jack Harger  
 Doris Jones



Larry Lawson  
 Barbara Mabe  
 Herman Mabe  
 Johnny Mabe  
 Betty Neal  
 Ronnie Neal



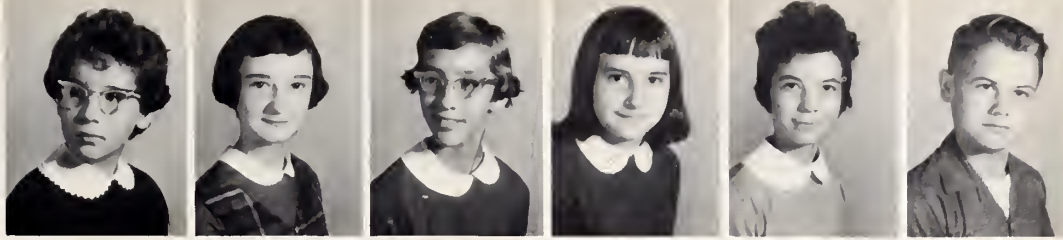
Robert Rierson  
 Larry Southerland  
 Helen Valentine  
 Tommy Wood  
 Pasty Badget  
 William Boles



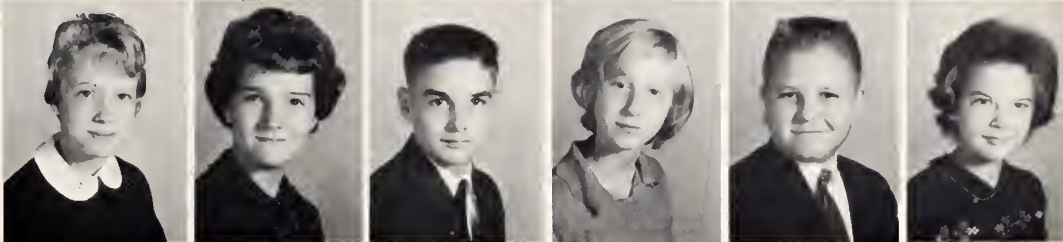
Dale Booth  
 Gay Brim  
 Christine Bullins  
 Roger Bullins  
 Morris Calhoun  
 Durwood Dunlap



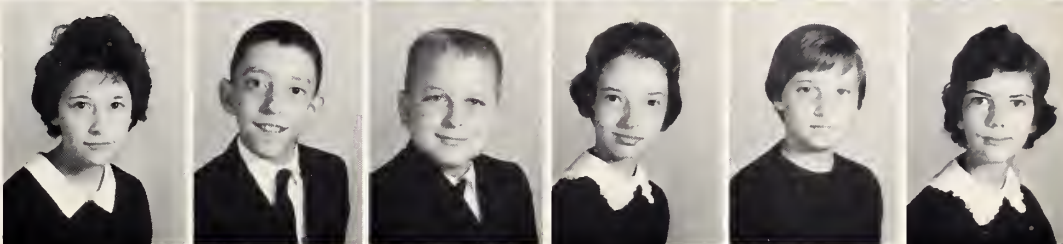
Kate Flinchum  
 Terry Flynt  
 Sally Fowler  
 Cathie Hall  
 Delores Hicks  
 Donnie Hincer



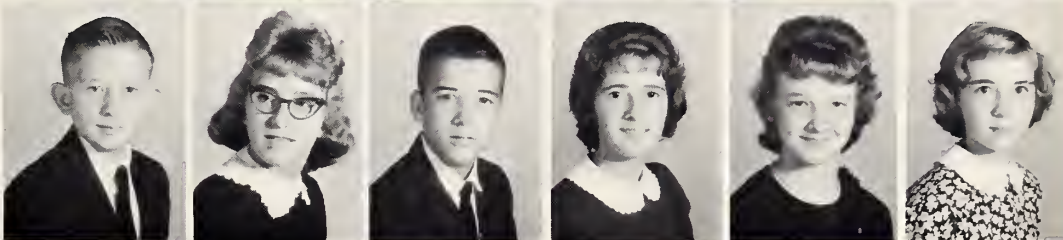
Esther Hutchison  
 Lee Lasley  
 Sam Lindsey  
 Sarah Martin  
 Barry Mounce  
 Bonnie Mitchell



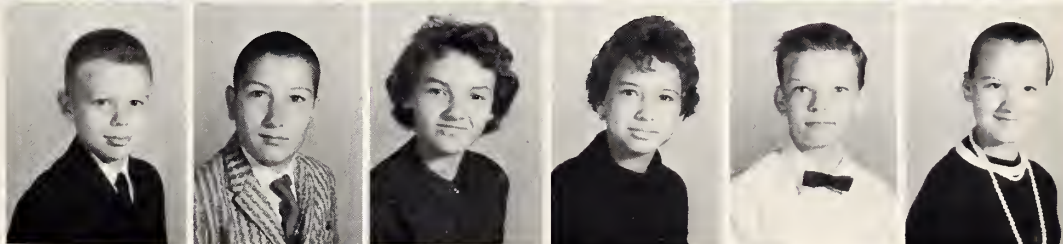
Nancy Murphy  
 Johnny Neal  
 Bruce Orrell  
 Frances Rothrock  
 Paulette Simmons  
 Candace Smith



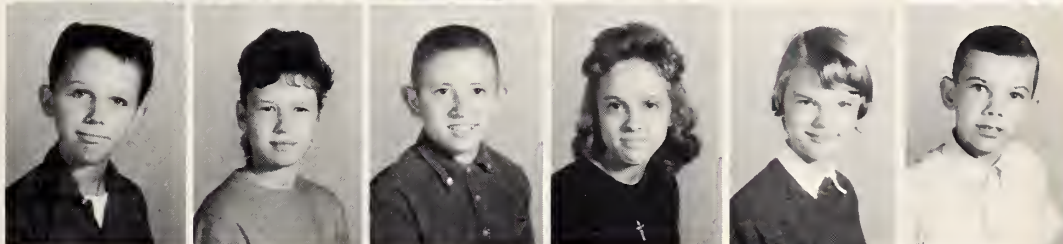
Mac Smith  
 Vicky Smith  
 Wic Southern  
 Pamela Tedder  
 Jewel Williams  
 Lynn Willis



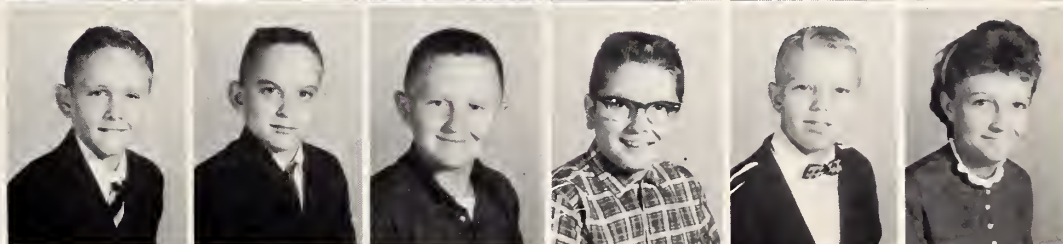
Tommy Vernon  
 David Ashburn  
 Freda Ashby  
 Gay Ashby  
 Jerry Daniels  
 Barbara Duggins



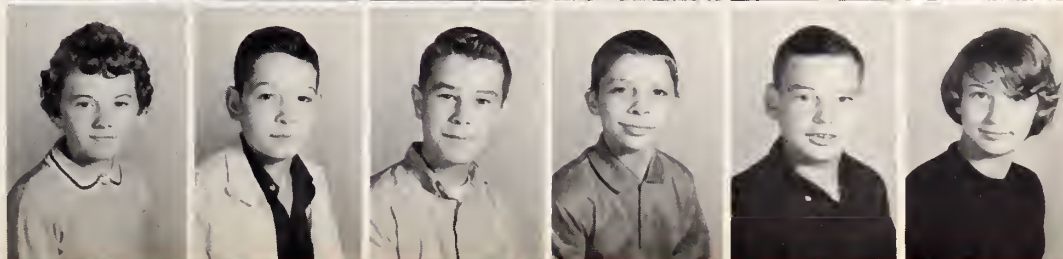
Jacky Farmer  
 Ann Fulp  
 Teddy Harrison  
 Patricia Hewett  
 Nancy Hicks  
 Darrel Hole

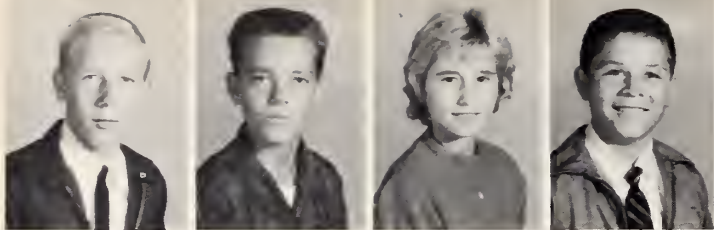


R. L. Holt  
 Bill Joyce  
 Ricky Joyce  
 Terry King  
 Larry Mabe  
 Patricia Mabe

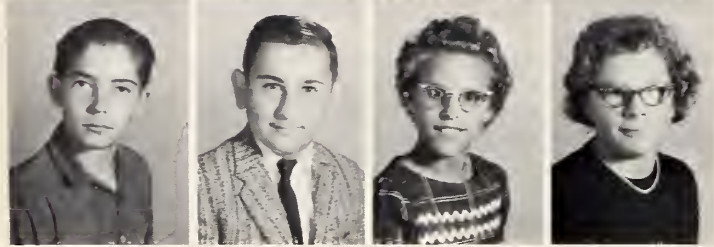


Virginia Martin  
 Junior McHorn  
 Charle Moorefield  
 Wayne Myers  
 Steve Neal  
 Jane Reid





William Sain  
Lester Shelton  
Carol Jean Smith  
Don Smith



Donnie Smith  
Steve Stultz  
Barbara Tuttle  
Linda Vaden

Another door unlocked.





# ADVERTISING

Compliments of

## WALNUT COVE HOSIERY MILL

"Wee Sock Plant"  
the finest in hosiery!

Phone LY 1-6091

Compliments of  
C. S. JONES CASH-GROCERY  
Walnut Cove, North Carolina

JONES AND LANDRETH  
INSURANCE AGENCY

Phone LY 1-4781  
Walnut Cove, North Carolina

DON A. TUTTLE  
INSURANCE

Life, Hospital, Auto, Fire.

Compliments of  
DUNLAP AND SON  
General Merchandise



# TUTTLE HARDWARE COMPANY

Walnut Cove, North Carolina

**BELEWS CREEK LUMBER  
COMPANY, INC.**

Dealer In Lumber

Phone Walkertown LY-56886

*Compliments of*

**JUNE NEAL**



Belews Creek, North Carolina

*Compliments of*

**HOPE'S AND BAILEY'S**

*latest fashions*

Walnut Cove, North Carolina

*Compliments of*

**DR. V. L. DEHART**

Walnut Cove, North Carolina

*Compliments of*

**WALNUT COVE REALTY AND  
INSURANCE CO.**

L. W. Williams, Agent

"Insurance of All Kinds"

Walnut Cove, North Carolina

**NELSON'S FUNERAL  
SERVICE**

Dial LY 3-7101  
Danbury, North Carolina

Compliments of  
**STOKESDALE MILLING COMPANY**

Phone MI 3-4145  
Flour-Meal-Feeds  
Russell Southern, Owner

**A. V. CHAPMAN**

General Merchandise  
Feeds and Fertilizer  
Walnut Cove, North Carolina

**A. W. PRESTON & SON**  
General Merchandise  
Belews Creek, North Carolina

*Compliments of*

**BURROUGHS FUNERAL HOME**

Phone LY 1-2731  
Walnut Cove, North Carolina

DONALDSON AUTO PARTS  
WHOLESALE

Phone LY 1-7191  
Walnut Cove, North Carolina

MONITOR ROLLER MILLS, INC.  
Southern's Best Flour, Meal & Feeds  
Phone LY 1-2361  
Walnut Cove, North Carolina

DUKE POWER COMPANY  
Serving the Piedmont Carolinas  
The electric way, best today--  
tomorrow, the only way

Compliments of  
BENNIE'S BEAUTY SHOPPE  
Walnut Cove, North Carolina

GENTRY'S  
Walnut Cove, North Carolina

NELSON & RICHARDSON  
Firestone Retreading  
All Major Brands of Motor Oil  
Phone LY 1-7197

HARGERS SHELL  
Phone LY 1-5561  
Walnut Cove, North Carolina

CARLOS E. DAVIS  
Real Estate Broker-  
Rentals-Collections  
Walnut Cove, North Carolina

Compliments of  
Wesley and Margie  
WESTERN AUTO ASSOC. STORE  
Walnut Cove, North Carolina  
Your "Flipper" Headquarters

K & B ESSO SERVICE STATION  
Andrew Knight & Odell Bullins  
Walnut Cove, North Carolina

Compliments of  
PALMETTO THEATRE  
Walnut Cove, North Carolina

Compliments of  
THE COVE FINANCE CO., INC.  
Walnut Cove, North Carolina

SANDS SERVICE STATION  
Intersection Hwys.  
N. C. 65 & U. S. 311  
Walnut Cove, North Carolina

HALL'S GROCERY STORE  
Walnut Cove, North Carolina

Compliments of  
PEPPER'S SUPERMARKET  
Walnut Cove, North Carolina

Compliments of  
A FRIEND

# RAY'S DRUG STORE

Prescription Druggists

Serving Walnut Cove Since 1946

Convenient To Your Doctors

Plenty Parking Space

Telephone LY 1-6231



## JOHN G. FULTON

Groceries-Fertilizer

Frigidaire Appliances



## NEAL HARDWARE

Walnut Cove, North Carolina

*Compliments of*

## STOKES LUMBER COMPANY, INC.



Phone LY 1-2596  
Walnut Cove, North Carolina



*Compliments of*

## C & W BARBER SHOP

Walnut Cove, North Carolina

*Compliments of*

## TUTTLE MOTOR CO.



Phone LY 1-2561  
Walnut Cove, North Carolina

# STEVE'S DRUG STORE

A Complete Drug Store

Cards  
Gifts  
Cosmetics  
Film



Sodas  
Candies  
Magazines  
Tobaccos

A Registered Pharmacist On Duty  
At All Times

Dial LY 1-7171  
Walnut Cove, North Carolina



## L. & H. TEXACO SERVICE

Walnut Cove, North Carolina

*Compliments of*

### FULTON CHEVROLET CO.



Sales-Service

Phone LY 1-5121  
Walnut Cove, North Carolina



### ALLEY'S MAYTAG

Phone LY 1-6021  
Walnut Cove, North Carolina

**KLEAN-RITE LAUNDRY  
AND CLEANERS**



Dial LY 1-2816  
Walnut Cove, North Carolina

**M. A. PICKETT  
DEPARTMENT STORES**



Home of Better Values  
Walnut Cove, North Carolina

**WALNUT COVE FUEL SUPPLY**



ESSO PRODUCTS

Walnut Cove, North Carolina



## NEAL'S SUPERMARKET

Town Street  
Walnut Cove, North Carolina

Congratulations to the  
Senior Class

## VERNON'S GRILL

Walnut Cove, North Carolina

"For all Flower needs-  
Gifts old and new."

## COVE FLORIST

Bill & Rebecca Parks

Walnut Cove, North Carolina



*Congratulations*  
**GRADUATES**

# CASH WHOLESALE GROCERY, INC.

Walnut Cove, North Carolina

# THE NORTHWESTERN BANK

We Welcome Your Accounts  
Savings Accounts

Safety Deposit Boxes

Your Deposit Insured up to \$10,000.00  
By  
Federal Deposit Insurance Corporation

Telephone King YU 3-5915  
King, North Carolina

Telephone LY 1-2451  
Walnut Cove, North Carolina

*Compliments of*

## HERFF-JONES

World's Largest Manufacturer of Class Rings

Indianapolis 7, Indiana

E. W. Paddison, Representative

Mt. Airy, North Carolina

Compliments of  
RUTLEDGE ESSO SERVICE  
Germanton, North Carolina

DON'S BARBER SHOP

Don Hauser  
Melvin Davis  
King, North Carolina

Compliments of  
SLATE'S FUNERAL HOME

Phone YU-3-8195  
King, North Carolina

WESTERN AUTO ASSOCIATE STORE

Home Owned and Operated By  
R. H. Gentry  
Telephone: Yukon 3-3440  
King, North Carolina

KOOLER'S FOOD CENTER  
Meats, Produce, Groceries  
and Frozen Foods  
Phone Yukon 3-9775  
King, North Carolina

L. M. LONG AND  
SON JEWELERS  
Billy Long, Watchmaker  
King, North Carolina

HERMAN'S  
CLOTHING - SHOES  
"The Style Center"  
Phone YU-3-9621  
King, North Carolina

LAWSON'S GARAGE  
Complete Automatic  
Transmission Service  
General Auto Repair, Wrecker Service  
Phone YU-3-9750  
King, North Carolina

KING LUMBER CO.  
D. M. Green & Son  
Owners  
Phone YU 3-5765  
King, North Carolina

WALL-GRIFFIN TIRE CO.  
King, North Carolina  
Wheel Alignment and Balancing  
Recapping Service  
Phone YU 3-8891

Compliments of  
GORDON'S HARDWARE CO.  
King, North Carolina

KING DRUG CO.  
Prescription a Specialty  
Phone YU 3-9285  
King, North Carolina

TINY DINY CAFE

King, North Carolina

Compliments of  
KING FURNITURE CO.  
King, North Carolina

Compliments of  
ESTER'S BEAUTY SHOP  
Phone YU-3-8130  
King, North Carolina

**BRADY**

**FURNITURE COMPANY, INC.**

Phones 969-2425-969-5152  
Area Code 919  
Rural Hall, North Carolina

**VADEN & TURNER**



Phone WO-9-4453  
Rural Hall, North Carolina

**PRINGLE READY MIX  
CEMENT CO.**

Phone 969-5107  
Rural Hall, North Carolina

**RURAL HALL LANES**



"AIR CONDITION"

Phone WO-9-5149  
Highway 52  
Rural Hall, North Carolina

*Compliments of*

**HI-DOLLAR LAND CO.**

We Sell Anything Anywhere

Private or Auction

B. M. Wright, Owner

Phone-377-2460  
LY 1-4632 Walnut Cove

*Compliments of*

Wesley Hunsucker

**RURAL HALL SHELL SERVICE**



Phone WO-9-3005  
Rural Hall, North Carolina

Eat at

**STULTZ RESTAURANT**

For the Finest in Foods

IF IT'S GOOD FOOD YOU WANT ...

Rural Hall, North Carolina

Sell  
Your Tobacco With  
Winston's Leader  
**GROWERS WAREHOUSE**

"First Sale Every Day"  
Winston-Salem, North Carolina

*Compliments of*

**BROWNS WAREHOUSE**

Winston-Salem, North Carolina



**MOTHER AND DAUGHTER  
FASHIONS**

Corner of Liberty and 3rd St.  
in  
Winston-Salem, North Carolina

## **VOGLER SERVICE**

Funeral Directors  
Ambulance Service

More Than 100 Years of Dependable Service  
Serving the People of Walnut Cove at no Additional Expense

Telephone Park 2-6101  
120 S. Main St.  
Winston-Salem, North Carolina



Compliments of

# GROVER SUGART MOTORS



Rural Hall, North Carolina



# WILSON BROTHERS LUMBER CO.



Building Materials  
"From Tree to Key"

MAKE YOUR HOME COMPLETE

CONTRACTORS ----- BUILDERS  
COMMERCIAL ----- RESIDENTIAL

Phone WO 9-2215  
Rural Hall, North Carolina

**WARREN'S  
DRUG STORE**

"Your Dependable Druggist"

Phone: WO 9-2965  
Rural Hall, North Carolina

**STANLEYVILLE PHARMACY**

We deliver Prescriptions and  
Medicine In Stanleyville-  
Rural Hall Area

Owners  
Martin Wall - Stuart Rollins  
Phone 377-2244  
Route 1,  
Rural Hall, North Carolina

**L. G. BROWN**

BUILDING CONTRACTOR

Tels: Germanton WO-9-5449  
Walnut Cove LY-1-7181  
Germanton, North Carolina

**COHEN-ROBINS**

*latest fashions*

Northside Shopping Center  
Winston-Salem, North Carolina

"Good Home-Cooked Foods"  
at  
SHOUSES GRILL  
Rural Hall, North Carolina

TUTTLE'S BARBER SHOP  
Rural Hall, North Carolina

CLARK KIGER  
FURNITURE CO.  
Discounts and  
Easy Terms  
CLARK KIGER, OWNER  
Rural Hall, North Carolina - WO 9-2491

Compliments of



"KIP" HAUSER  
Rural Hall, North Carolina

**COMMERCIAL AND  
FARMERS BANK**

Member  
"Federal Deposit Insurance Corporation"  
Rural Hall, North Carolina

D & G  
RADIO & T. V. SERVICE  
Phone 377-2436  
Stanleyville, North Carolina

**RURAL HALL BEAUTY SHOP**

"Beauty is Our Business"  
Next to Post Office  
Amy Jo Kiger - Owner & Operator  
Phone WO-9-5753

"EXPERT SHOE REPAIR"  
BOB'S SHOE SHOP  
Stanleyville, North Carolina

*Compliments of*

## EAST DEPARTMENT STORE

Ogburn Station  
Winston-Salem, North Carolina

## PINNIX DRUG STORE

"Trusted over A Million Times"

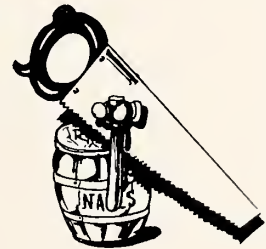
"On The Square Since 1904"

Phone 993-2179  
Kernersville, North Carolina

## KERNERSVILLE LUMBER COMPANY

DEALERS IN ALL KINDS BUILDING SUPPLIES

Phone 993-2144  
Kernersville, North Carolina



## OGBURNTOWN PHARMACY

"The Dependable Store"

4218 N. Liberty Street Extn.  
Winston-Salem, North Carolina

## OAKLEY TIRE AND BATTERY SUPPLY CO.



Gulf Tires, Batteries & Auto Ace,  
Custom Recapping

"We specialize in racing rubber"

U. S. Highway 311 South  
Walnut Cove, North Carolina

We Use Only  
SEALTEST  
Ice Cream and Milk

*Sealtest*  
**ICE CREAM**



"Get Pep"

"Get Energy"

"Get the Best-Get Sealtest"

Winston-Salem, North Carolina

**KELLY TYPEWRITER CO.**

Complete Line of  
Portable and Standard Typewriters

(Typewriter is our Middle Name)

618 W. 4th St.  
Winston-Salem, North Carolina

*Compliments of*

**SWINKS RECAPPING**

Fast Service  
and  
Quality Recapping

Phone 767-1432  
Ogburn Station  
Winston-Salem, North Carolina

**BOCOCK-STROUD COMPANY**

*Congratulations*  
**GRADUATES**

Sporting Goods

Dependable for 35 years

Phone PArk 4-2421

Winston-Salem, North Carolina

Sell your tobacco  
with

Burnie Cook

Penn Thomas

Julian Vaughn

William Fowler

Claude Strickland

Fred McLaughlin

at

**COOK'S WAREHOUSE**

N. Patterson Avenue Extention  
Winston-Salem, North Carolina

Compliments of  
STOP & SHOP SUPERMARKET

Walkertown, N. C.

Compliments of  
REXALL DRUG STORE

Stokesdale, N. C.

ROMINGER FURNITURE CO.

Established 1900

423 N. Liberty Street

Winston-Salem, N. C.

A. A. MOSER & SON FEED & SEED STORE  
Feeds, Seeds, Fertilizer, Insecticides,  
Peat Moss, Garden Supplies & Groceries  
of Every Description.

Phone PA 2-6483 or PA 4-4302  
N. Trade Street-Winston-Salem.



## WALL GLADE HILL FUNERAL CHAPEL

1200 Glade At West Fifth Street

Winston-Salem, North Carolina



And here is the man  
that carries all of  
our keys--Ott Lash.















Danbury Public Library  
P.O. Box 218  
Danbury NC 27016































Danbury Public Library  
P.O. Box 218  
Danbury, NC 27018

DANBURY PUBLIC LIBRARY



3 0672 1001 7739 3