

WILD FLOWERS
OF
NOVA SCOTIA

RB294 194



Library
of the
University of Toronto



WILD FLOWERS OF NOVA SCOTIA.



BY MARIA MORRIS.

UNDER THE PATRONAGE OF
HIS EXCELLENCY
LIEUT.-GEN. SIR C. CAMPBELL, K.C.B., &C., &C.
LIEUTENANT GOVERNOR OF NOVA SCOTIA.

Executed from Nature of the full size of the Flowers, accompanied by information on the History, Properties, &c. of the subjects,

BY TITUS SMITH.

HALIFAX, N.S.;
PUBLISHED BY C. H. BELCHER;
AND
JOHN SNOW, PATERNOSTER ROW, LONDON.

1840.



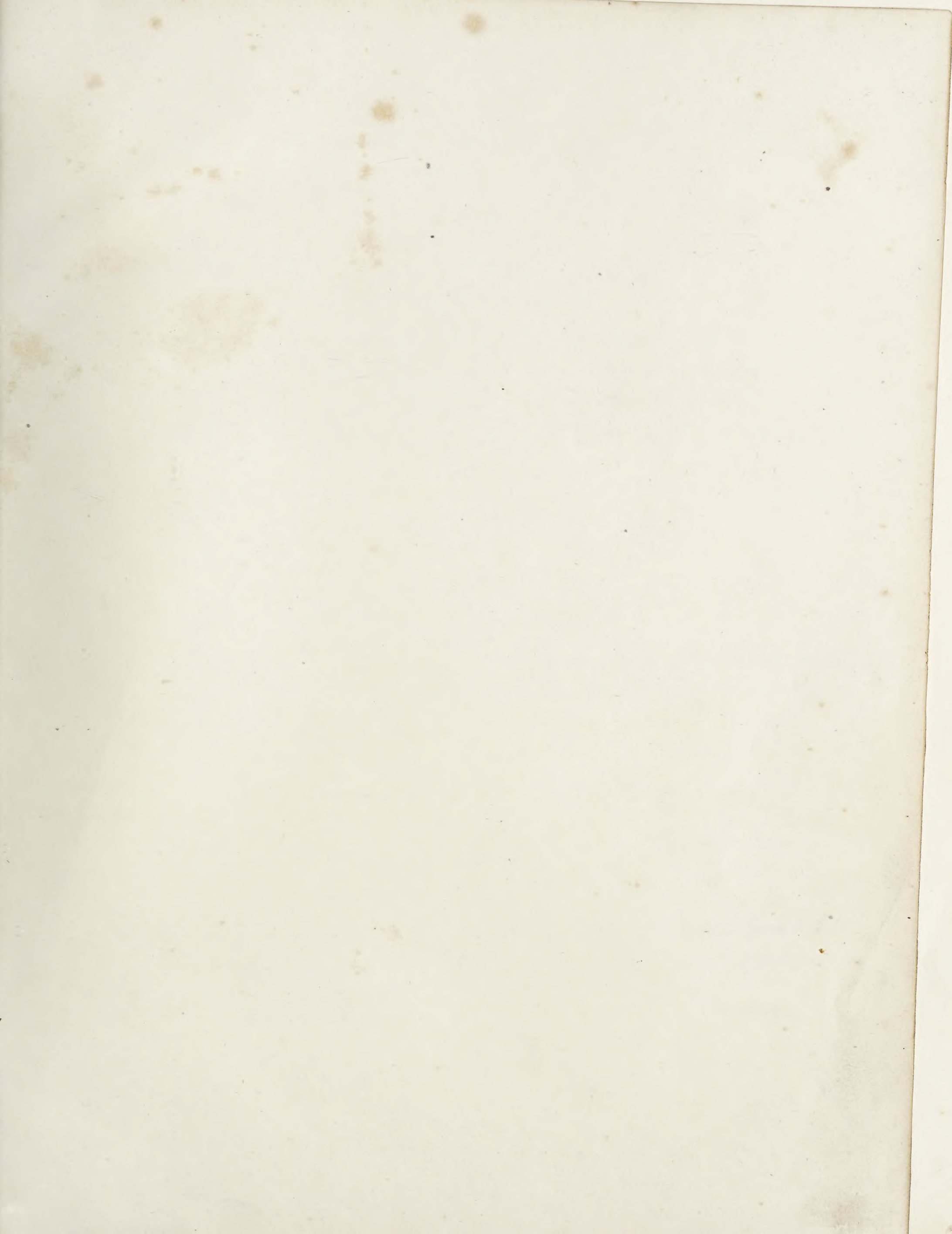


PLATE I.

Epigæa repens.—MAY FLOWER.

This interesting little flower, so dear to every Nova Scotian, is now the adopted emblem of her patriotic institution—"The Nova Scotian Philanthropic Society." Rich in perfume, somewhat like that of the Apple Blossom, the May Flower opens before the frost is all out of the ground, varying with the seasons from the latter end of March to the first of May—grows in a dry turfy soil, both in woods and among small heathy shrubs.

PLATE II.


Cornus Canadensis.—PIGEON BERRY.

Found in turf soils, both in woods and open ground. The Indians eat this fruit and lichens from the rocks when they cannot procure other food, accounting the more sapid fruits, like those of the raspberry, unwholesome, unless they have solid food with them.

PLATE III.

Nymphæa Odorata.—WHITE WATER LILY.

In moderate weather the perfume of these flowers may be perceived at a considerable distance from the lakes in which they grow, in water varying from two to eight feet in depth. There are veins in the roots containing a purple fluid. Flowers in July.



Digitized by the Internet Archive
in 2019 with funding from
University of Toronto

<https://archive.org/details/wildflowersofnov00mill>



Drawn from Nature by Maria Morris.

Epigaea repens. May flower.

Published by C.H. Belcher, Halifax N. S. John Snow, London.

Plate II.



Drawn from Nature by Maria Morris

Cornus Canadensis. Pigeon-berry.

Published by C. H. Belcher, Halifax, N. S. John Snow, London.

Plate III.



Drawn from Nature by Maria Morris.

Nymphaea Odorata, White pond Lily.



Drawn from Nature by Maria Morris.

Sarracenia purpurea

Indian Cup.





Drawn from Nature by Maria Morris

Viburnum opulus. Tree Cranberry.

Published by C.H. Belcher, Halifax, N.S. John Snow, London.





Drawn from Nature by Maria Morris

Asclepias Amœna vel Asclepias Syriaca. —
Indian Hemp — Milk Weed.

PLATE VII.

Polygonatum Rubescens.—SMALLER SOLOMON'S SEAL.

LINN.—Hexandria Monogynia.

NAT.—Liliaceæ.

Woods and rocky banks. Common. Flowers in May and June.

PLATE VIII.

1. *Platanthera Fimbriata*.—LARGE PURPLE FRINGED ORCHIS.

LINN.—Gynandria Monandria.

NAT.—Orchidaceæ.

Wet meadows. Common in north, rarer towards south. Fragrant. Flowers in June and July.

2. *Platanthera delatata*.—NORTHERN WHITE ORCHIS.

LINN.—Gynandria Monandria.

NAT.—Orchidaceæ.

Cold peat bogs. Flowers in June and July.

PLATE IX.

Viburnum Lantanoïdes.—MOOSE BUSH.

LINN.—Pentandria Trigynia.

NAT.—Caprifoliaceæ.

Habitat: cold, moist woods. Common. Blossoms in May. Flowers handsome.



POLYGONATUM PUBESCENS. SMALLER SOLOMON'S ISLANDS.



Platanthera fimbriata.
LARGE PURPLE FRINGED ORCHIS

Platanthera dilatata.
NORTHERN WHITE ORCHIS



VIBURNUM LANTANA

VIBURNUM CUNEIFOLIUM

PLATE X.

Mitchella repens.—TWIN BERRY.

LINN.—Tetrandria Monogynia.

NAT.—Rubiaceæ.

Habitat: dry woods, about the roots of trees. Flowers in June and July. This pretty little plant commemorates Dr. John Mitchell, a resident in Virginia, and an early correspondent of Linnæus.

PLATE XI.

Pontederia cordata.—PICKEREL WEED.

LINN.—Hexandria Monogynia.

NAT.—Pontederiaceæ.

Grows in shallow water. Violet blue. Ephemeral Flowers. Blossoms in July and September. Common. Dedicated to Pontedera, Prof. of Padua, beginning of last century.

Sagittaria Variabilis.—COMMON ARROWHEAD.

LINN.—Monœcia Polyandria.

NAT.—Alismaceæ.

This, with its Protean varieties, of which almost every pool and stream furnishes a goodly number, embraces many nominal species of authors, and may safely be held to include all that are found within our limits.

PLATE XII.

Actæa Rubra—Alba.—RED AND WHITE BANE BERRY.

LINN.—Polyandria Monogynia.

NAT.—Ranunculaceæ.

1. *Actæa Rubra*.—Berries red and oval. Flowers in April and May.
2. *Actæa Alba*.—Berries milk white. Habitat: woods. Flowers in May, later than *Rubra*, and generally a larger plant.



MITCHELLA REPENS . TWIN BERRY .



Pontederia Cordata.
PICKEREL WEEED

Sagittaria Variabilis.
COMMON ARROWHEAD



Actæa Alba & Rubra.





