

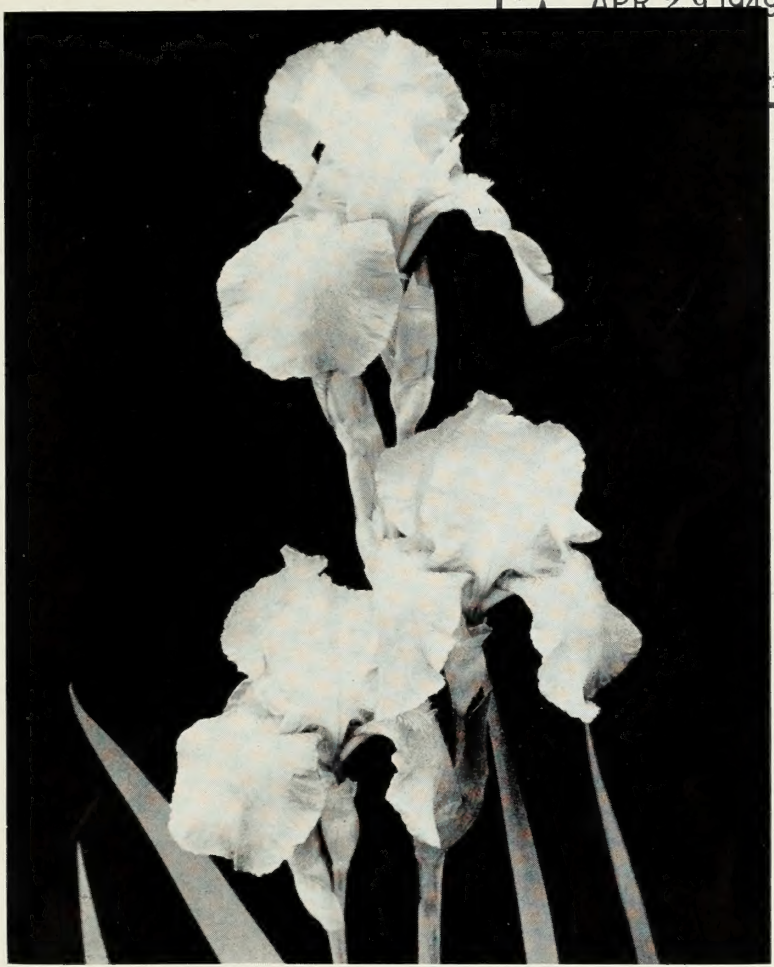
Historic, archived document

Do not assume content reflects current scientific knowledge, policies, or practices.

2.25

LIBRARY
RECEIVED
APR 29 1949
★
iculture

In



DREAMCASTLE

—Photo by Cassebeer

1949

Williamson
Iris.....Daylilies

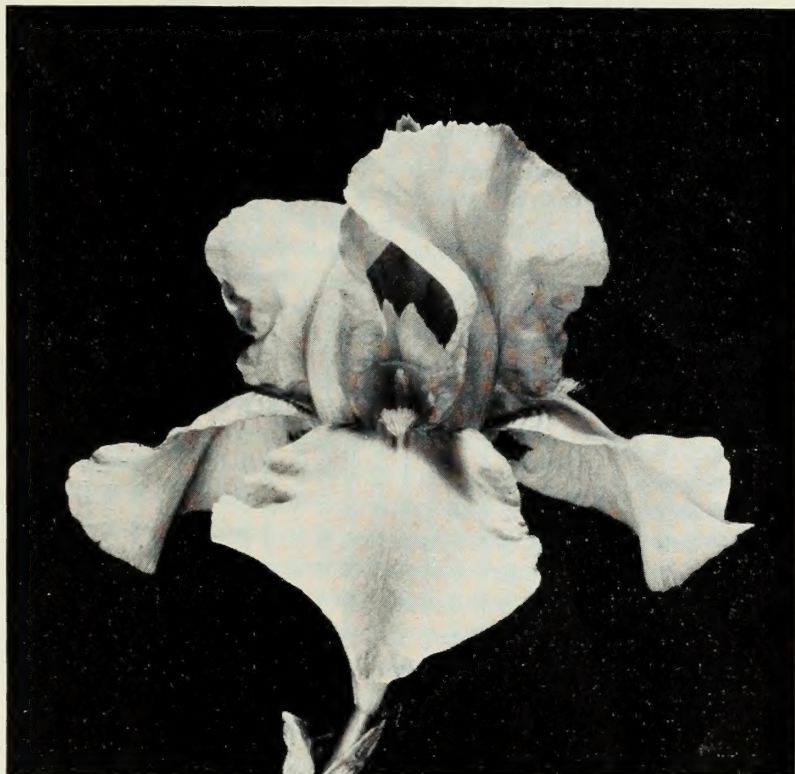
Longfield Iris Farm - Bluffton, Ind.



—Photo by Larmore

Three Cheers

See Page 14



DISTANCE

—Photo by Larmore

Greetings!

Last spring this section of the country had one of the best Iris and Hemerocallis seasons we have ever had. The flowering periods were nearly perfect as to weather conditions and the blossoms were never more beautiful. All summer long the growing season was ideal. And what a winter—regular California weather! Now we are looking forward to our 1949 flowering season, keeping our fingers crossed and hoping that our good weather will last.

We do hope that all our Iris friends will come and see us again this spring. We have replanted our home garden again in Iris. Here you will find all the very latest introductions; also seedlings that are under observation. In our field planting of around five acres, one may enjoy at leisure the hundreds of varieties all well labeled, compare and check the newest with the oldest varieties, and obtain Iris garden information, if one so desires.

Flowering dates are usually: Iris—last week of May and first week in June with peak of bloom May 30; Hemerocallis—July.

Bluffton is 25 miles south of Fort Wayne, easily reached from any direction by paved roads. Both our home garden, 419 West Market St., and our field planting, west end of Market St., are located on Indiana Route 124. We are looking forward to seeing you in Bluffton this spring.

MARY WILLIAMSON

Introduction and Terms

(Please read carefully before ordering.)

Prices—Price is for one plant delivered prepaid to the customer in the United States only, unless otherwise indicated.

—Iris orders amounting to \$2.00 or less are not prepaid and must include 25c postage when order is given to us.

—Hemerocallis orders amounting to \$3.00 or less are not prepaid and must include 35c postage when order is given to us.

—On orders amounting to \$25.00 or more a discount of 20% will be allowed, except in the case of collections listed on the following pages: 18, 19, 20, and 28.

—Please do not pay for orders in stamps of over 3c denomination.

—This catalog supplants all prices in all our previous catalogs.

Size, Quality, and Labeling—Guaranteed to be satisfactory to the customer.

If there is any complaint when plants are received, do not return them but give them the best possible treatment you can and write us at once, indicating the adjustment desired.

Time for Planting—Iris can be transplanted immediately following the blooming season from June through October. However, we will ship on any date you wish or as near to that time as weather will permit.

—No Iris will be shipped between May 15 and June 15, as those are the days of our blooming season. No Iris shipped after November 1, but we will start shipping again in the Spring as soon as weather conditions permit.

—Brief directions for planting Iris are given on the reverse of the duplicate order sheet in this catalog. Directions for planting Hemerocallis will be enclosed with each order.

Personal Service—We shall be glad to assist you at any time in making your selections in Iris or Hemerocallis for your garden or to advise and help you with your garden problems, if you will write us.

Abbreviations—There are a few general terms used in the description of the Iris which have been abbreviated for sake of convenience. They are as follows:

S.—Standards of Iris

F.—Falls of the Iris

A.I.S.—American Iris Society

A.M.—Award of Merit

H.M.—Honorable Mention

R.H.S.—Royal Horticultural Society

Explanations of terms used will be found listed in the "Color Chart."

Member of the American Iris Society

Member of the English Iris Society

Member of the Hemerocallis Society

Join the Hemerocallis Society

If you are interested in Hemerocallis, this new organization needs you and you need it. We want personal experience reports from hundreds of gardens. These, and the best advice from leading hybridizers, will be carefully collected and annually sent back to you in an attractive and useful yearbook which also will contain the names and addresses of our members to date. There will be bulletins and printed matter from time to time, and there is a loan library of Hemerocallis literature.

Annual dues are three dollars (\$3.00) and should be mailed to the Secretary-Treasurer, Pearl Sherwood, Atlantic, Iowa.

1949 LONGFIELD INTRODUCTION

(Our 1949 introduction is not to be considered in computing the 20 per cent quantity discount mentioned on page 2.)

PINK BOUNTIFUL (Cook No. 13143). (Seedling of Harriet Thoreau.) This Iris is the pinkest of all the orchid pink Iris we have grown. Large, perfectly formed flowers with broad petals; smooth satiny texture; heavy substance. Pink Bountiful is outstanding in two respects. First, it is the pure glowing pink that has been needed for combination with other colors in a perfect garden picture. Second, it is the hardiest, the most floriferous Iris we have ever grown, without exception. Regardless of the number of blooms or stalks, the stems rise straight and even above the foliage, making a lovely green frame around the pink. A perfect beauty! The well branched stem is 38-40 inches tall. Midseason. **\$15.00**

Tall Bearded Iris

(Standard varieties at a low price will be found listed on page 19 and 20; Dwarf Iris on page 21; Intermediate Iris on page 21; Table Iris on page 22; Siberian Iris on page 22; Beardless Iris on page 23. Look on these pages for varieties not listed below.)

- ACTION FRONT** (Cook, 1942). A brilliant coppery red Iris with broad S. and F. and a smooth beautiful finish. A distinct and worthy variety because of its fine color and general good qualities. 3 feet. Midseason. **\$1.50**
- ADIOS** (Cassebeer, 1949). A lovely large variegata with S. rich yellow and F. red brown. This Iris has been a guest with us for several years. Because of its very late flowering and its extreme thriftiness of growth, we feel Adios is worthy of introduction. **\$5.00**
- ADMIRATION** (Smith, K., 1946). H.M., A.I.S. 1947. A smooth medium yellow self, outstanding in quality and substance. Late. 40 inches. **\$8.00**
- ALASTOR** (Spender, 1940). A.M., A.I.S. 1941. A distinct Iris in a shade near cyclamen pink, vivid and alive. The beard is bright orange and the hafts of the falls are a golden hazel brown. 3 feet. Early, midseason. **\$0.75**
- AMANDINE** (G. Douglas, 1946). H.M. 1946; A.M., A.I.S. 1948. The charm of this new and lovely Iris is in its delicacy of color and delightfully ruffled form. It is a self with large flowers of pale cream with just a flush of lemon. 34 inches. **\$8.50**
- AMIGO** (Wmsn., 1934). H. M. 1936; A.M. 1938; A.I.S. A very rich Iris suggesting a velvety blue purple pansy. S. clear light lavender violet; F. deep hyacinth violet shading out to light hyacinth violet margin. 34 in. **\$0.75**
- ANNA WILLIAMSON** (Cook, 1946). H.M., A.I.S. 1946. A gay and brilliant pink bicolor with more than average carrying power, standing out prominently in any planting. The pleasing contrast of light pink S. and deep pink F. with a creamy suffusion at the heart, the broad full segments, the smooth texture and heavy substance, the hardy free flowering quality, make this one of the most charming of all Iris. 3 feet. **\$5.00**

- ARCTIC** (Klein, 1940). H.M. 1941; A.M. 1942; A.I.S. A white and gold Iris of perfect form, with ruffled S. and broad F. that are as smooth as white enamel. There is an area of bright yellow throughout the center of the flower. 40 inches. **\$0.75**
- ARETHUSA** (Gage, 1940). H.M., A.I.S. 1937. A Daphne red self with very large flowers of nice form. Golden bronze haft with bronze beard. 40 inches. **\$0.50**
- AZURE SKIES** (Pattison, 1943). H.M., A.M., A.I.S. 1945. A pale blue Iris that is perfection in form. It is a self of pale lavender blue with firm domed S. and flaring almost horizontal F.; white beard. 3 feet. **\$2.00**
- BALMUNG** (H. P. Sass, 1939). H.M. 1940; A.M. 1942; A.I.S. One of the outstanding yellow plicatas. S. and F. are yellow with clean brown markings, about the largest flower of this class. 38 inches. **\$1.00**
- BANDMASTER** (D. Hall, 1944). H.M., A.I.S. 1944. A very large, vigorous grower and free flowering medium blue. The color holds up unusually well. Form, substance, stem, branching are all good. 3 feet. **\$4.00**
- BERKELEY GOLD** (Salb., 1942). H.M. 1944; A.M. 1946; A.I.S. A large clear deep yellow self of fine form, heavy substance and smooth texture. Does not fade and stands wind and rain. 3 feet. **\$1.50**
- BETTY CAMPBELL** (Hill-Son, 1945). A deep blue bicolor with violet blue F. and slightly paler violet blue S. on 40-inch stems. Vigorous grower. **\$0.50**
- BLUE GLOW** (Nich., 1945). H.M., A.I.S. 1948. A rich shade of deep blue with a wonderful smoothness and lustre. The large beautiful formed flower has a distinct brown flush on the haft and a whitish beard. Very late Excellent. **\$5.00**
- BLUE SHIMMER** (J. Sass, 1942). H.M. 1942; A.M., 1944; A.I.S. A fine beautiful plicata that has a clean crisp white background polk-dotted and edged with the clearest blue. A large flower of excellent form. 3 feet. **\$2.50**
- BLUE ZENITH** (Whiting, 1942). This sky blue Iris is large, tall and of clear medium light coloring. Vigorous and free flowering. 42 inches. **\$1.00**
- BONNY** (Lapham, 1948). One of the famous seashell family. Peppermint pink in color with leather-like substance and smooth coloring without any veining. A tangerine beard gives fine accent to the flower. Flowers are of medium size. 37 inches. Midseason. **\$7.50**
- BONSOR** (Con., 1938). A silky rich deep aniline blue of exceptionally smooth finish. No Iris so deep has so pure and brilliant a hue. 38 inches. **\$0.50**
- BRYCE CANYON** (Klein, 1944). H.M. 1945; A.M. 1947; A.I.S. A distinct and warm shade of brown or henna-copper. This large, smooth blend with its wide hafts and rounded form along with glowing undertones is very attractive. 38 inches. **\$6.00**
- BUCKSKIN** (Klein, 1939). The four-foot stems bear close to a dozen great blooms. This is one of the finest tan Iris now on the market. **\$0.60**
- BUFFAWN** (Andrews, 1940). An unusual coloring, buff fawn with a tangerine beard. Pronounced flaring flowers. 34 inches. **\$0.60**
- BURGUNDY ROSE** (Hall, 1946). The large ruffled dark Amethyst colored flowers are proudly carried on strong, well branched 35-inch stems. This Iris is best for massing as the flowers on close inspection show their darker colored veins. Vigorous and free flowering. **\$5.00**
- BUTTERCUP LANE** (D. Hall, 1941). H.M., A.I.S. 1940. A very large heavily ruffled clean, light yellow; deep orange beard. An excellent Iris for the front of the border, as it is only 31 inches tall. Vigorous and free flowering. **\$0.75**

- CAPTAIN WELLS** (Cook, 1941). H.M. 1942; A.M. 1943; A.I.S. A deep glossy maroon purple that is large, rich, solidly colored self, neat and finished in appearance, owing to the almost entire absence of haft markings, and to the subdued yellow of the beard. There is a wonderful shine to the whole flower that renders the rich color alive and bright. 36 inches. **\$1.50**
- CARILLON** (J. Wills, 1945). H.M., A.I.S. 1945. A warm blend with the luscious coloring of ripe apricots. The well formed flowers have broad segments and heavy substance. Not tall but very floriferous, the flowers of pink and honey yellow form a charming clump for border planting. 33 inches. Midseason - late. **\$6.00**
- CAROLINE BURR** (K. Smith, 1940). A.M., A.I.S. 1942. Lovely large flowers of light ivory with frosty iridescent sheen. 38 inches. **\$1.50**
- CAROUSEL** (G. Douglas, 1948). H.M., A.I.S. 1948. This large, tall, flaring flower has all the brilliance of a carnival. The medley of magenta, violet and gold is so skillfully combined that the color effect is bright lavender rose. A heavy gold beard accentuates the boldness of heavy substance and smooth finish. 44 inches. **\$8.50**
- CASA MORENA** (DeForest, 1943). H.M. 1944; A.M. 1946; A.I.S. A large flower of deep glistening rich brown with style branches yellowish and beard brownish orange. A rich note in the garden picture. 38 inches. **\$4.00**
- CHANTILLY** (D. Hall, 1945). H.M. 1945; A.M. 1947; A.I.S. A large ruffled orchid pink Iris. The edges of both S. and F. are so heavily frilled they give the appearance of being edged with lace of a lighter shade. It has good substance, is hardy and free flowering. 36 inches. **\$5.00**
- CHICORY BLUE** (G. Douglas, 1942). H.M., A.I.S. 1942. A large Chicory Blue self of smooth finish and firm substance. 38 inches. **\$2.50**
- CHIEF POKING FIRE** (DeForest, 1942). A rich red bicolor with S. of tapestry red and F. of deeper tone. Trim and well rounded flowers. 36 inches. **\$1.50**
- CHINA MAID** (Milliken, 1936). H.M. 1938; A. M. 1939; A.I.S. A soft smooth lilac pink blended golden bronze. Large with good form. 4 ft. **\$0.75**
- CHIVALRY** (J. Wills, 1944). Dykes Medal A.I.S. 1947. An impressive flower that is deeper in color, larger in size than Great Lakes and has exceptionally heavy substance. A very fine new medium blue. The domed S. are large and full. The flaring falls are broad hafted, firm and strong. The inconspicuous beard is orange changing to blue at the tip. Both S. and F. are ruffled at the edge. 36 inches. Midseason. **\$10.00**
- CHOIR BOY** (Schreiner, 1947). A late flowering amoena. The medium sized flowers have S. Milk white that soon pale to clear white; F. a shade of deep blue without the purple tinge. 34 inches. **\$2.50**
- CHRISTABEL** (Lapham, 1936). H.M. 1936; A.M. 1938; A.I.S. Brilliant and very red in effect. Wonderful in clump. Almost a self, smoothly finished. 3 feet. **\$0.50**
- CITY OF LINCOLN** (H. P. Sass, 1936). H.M. 1937; A.M. 1939; A.I.S. A striking variegata of clear and vivid coloring. S. clear bright yellow; F. velvety bright red. 40 inches. **\$0.50**
- COPPER PINK** (Kellogg, 1941). H.M., A.I.S. 1942. A beautiful flower of softest pink flushed with sparkling copper with blue shading at midrib of falls, haft dusted with gold. 38 inches. **\$1.00**
- COPPER ROSE** (Cook, 1941). H.M. 1942; A.M. 1943; A.I.S. A brilliant copper rose with a glow of golden yellow in the center. The beautifully formed flowers are slightly bicolor, with wide S. and F. 38 inches. **\$1.50**

- CORITICA** (H. P. Sass). A most outstanding yellow ground plicata. The soft yellow background is neatly and delicately marked rich warm brown. \$1.50
- COURTIER** (D. Hall, 1947). Deepest in color of the flamingo pinks. It is not as large nor has it as good a form as Cherie, but the color is outstanding. Prominent deep tangerine beard. 30 inches. \$10.00
- CRIMSON TIDE** (Nich., 1939). Large deep red with falls a deeper shade of very velvety red purple, accented by an orange beard. 42 inches. \$0.75
- CROWN OF GOLD** (D. Hall, 1940). Very large flowers of deep yellow self with deep orange beard. Very early. 3 feet. \$1.00
- DAMERINE** (Gage, 1939). H.M., A.I.S. 1941. A large dark red self with splendid substance and velvety texture, deep yellow beard. 3 feet. \$0.75
- DANUBE WAVE** (Schreiner, 1947). H.M., A.I.S. 1948. This new Iris is a self of rich Marine blue. A very large flower of exceptionally fine form on tall, 38-inch, well branched stem. Its outstanding quality is in its depth of coloring. Midseason. Very fine. \$7.50
- DAYBREAK** (Klein., 1941). H.M., A.M. 1943; A.I.S. A huge golden pink with slight undertones of copper. The slightly ruffled flowers have semi-flaring F. 3-4 feet. \$2.00
- DEEP VELVET** (Salb., 1939). H.M. 1941; A.M. 1942; A.I.S. A very large rich deep red-violet with dusky gold beard. There is a flush of claret brown on the hafts. 38 inches. \$1.00
- DISPLAY** (Grant, 1942). H.M., A.I.S. 1942. One of the darkest and richest reds, almost black in certain lights. A Spanish red, shading to deep maroon with color solid clear over the haft; beard brownish. Does not fade. Not a large flower but very lovely. 35 inches. \$1.50
- DISTANCE** (Cook, 1946). H.M., A.I.S. 1946. A satiny silvery light blue self with color even and clear throughout the whole flower. The whitish beard accentuates the fresh and satiny look. The flaring falls are slightly ruffled at the tip. The most admired blue Iris in our garden. Wonderful in clump or perfect as a single flower. 3 feet. Hardy. Quite distinct. \$9.00
- DREAMCASTLE** (Cook, 1943). H.M. 1944; A.M. 1948; A.I.S. An orchid pink self with great purity of color and S. and F. of exceptional width. A pink without any yellow but the color is very clear and bright. Flowers of huge size; shape, substance, texture are the best. This Iris appeals both to those who like wide S. and F. and to those with a preference for pure color. Hardy. 38 inches. \$7.50
- EASTER BONNET** (Maxwell-Norton, 1944). H.M., A.I.S. 1946. A large flower of rhodenite pink with half-inch margin of burnished gold on both S. and F.; heavy gold at the haft; golden beard. 40 inches. \$7.50
- EDITH RORKE** (K. Smith, 1946). A lovely white plicata definitely marked with bright blue. An Iris that has great garden value. Vigorous. 40 in. \$6.00
- ELMOHR** (Loomis, 1942). Dykes Medal A.I.S. 1945. A beautiful seedling of Wm. Mohr. A lively shade of reddish mulberry. Large flowers of heavy texture and excellent form. 3 feet. \$1.00
- ELSA SASS** (H. P. Sass, 1939). A.M. 1941; H.M. 1939; A.I.S. A distinct yellow note in Iris—a clear sulphur with a greenish cast in its depth and a near white effusion on the haft. The blossoms are large, rounded in form and slightly ruffled. 3 feet. \$0.60
- ERMA NEALE** (Lapham, 1947). A lovely very pinkish blend of medium height. \$4.50

- ETHELYN KLIETZ** (Gage, 1940). H.M., A.I.S. 1938. A lovely pink toned red of fine form; deep yellow beard. 35 inches. **\$0.75**
- EXTRAVAGANZA** (Douglas, 1944). H.M. 1944; A.M. 1947; A.I.S. Almost white S. shaded cream at the base; the F. a medley of copper, red, lavender and deep violet with a violet flush down the center. More of a blend, especially in the falls, than Wabash. **\$8.00**
- FAIR ELAINE** (Mit., 1938). H.M. 1939; A.M. 1940; A.I.S. An outstanding two-toned yellow; S. are palest primrose approaching white; F. golden yellow paling at the base; beard bright orange. 40 inches. **\$0.75**
- FAR WEST** (Klein., 1936). H.M., A.I.S. 1937. Blending of salmon, coral, and pale golden tan with a bluish copper cast on the F. 40 inches. **\$0.40**
- FIRECRACKER** (D. Hall, 1943). H.M., A.I.S. 1943. A glowing dark burgundy red plicata, with yellow edging. The depth and richness of color attracts the attention of everyone. Hardy and free flowering. 32 in. **\$3.50**
- FLAMELY** (Cook, 1942). H.M., A.I.S. 1944. A glowing red self with large flowers of splendid shape, good substance and texture. S. Ocher Red to Terra Cotta; F. Garnet Brown; beard Cadmium Yellow. 3 feet. **\$1.50**
- FLORA CAMPBELL** (Hill, 1940). H.M., A.I.S. 1940. Intense warm tones of red-brown and peach. The S. are a little brighter in tone with a more hazy coloring. 34 inches. **\$0.50**
- FLORA ZENOR** (J. Sass, 1942). H.M. 1942; A.M. 1944; A.I.S. A pale flamingo pink Iris with the F. flushed Rosolane purple. Conspicuous tangerine beard. Small, narrow flower on tall stems. 38 inches. **\$1.00**
- FRANCELIA** (McKee, 1944). H.M., A.I.S. A very bright chrome yellow, yet there is a depth of color that gives it a rich mellow tone. Orange beard. Heavy substantced flowers on well branched stalk. 38 inches. Midseason. **\$4.50**
- FRANK ADAMS** (Lapham, 1937). H.M. 1938; A.M. 1940; A.I.S. A beautiful large, full flower with S. of maize yellow and broad F. of deep rose with very wide golden haft. A tall, vigorous Iris. 42 inches. **\$0.50**
- FRANKLIN B. MEAD** (Mead-Riedel, 1936). A fine large white plicata with blue stitching around each S. and F. Hardy. 50 inches. **\$0.50**
- FROSTY BLUE** (Whiting, 1941). This lovely slightly ruffled light blue self is enhanced by a glittering frosty texture with the heaviest substance. The flower becomes bluer with age instead of paling. 38 inches. **\$1.50**
- GARDEN GLORY** (Whiting, 1943). H.M. 1945; A.M. 1947; A.I.S. A pure self of deep ruby red. It is dark, rich and glowing with a smooth satiny sheen. Does not fade, burn or spot in sun or rain. There is no veining and the beards are bronzy red. 33 inches. Very fine. **\$5.00**
- GOLDEN EAGLE** (D. Hall, 1942). H.M., A.I.S. 1942. A very large light yellow self with a satiny sheen. The glistening flowers are nicely formed and so large they look fragile, but take extreme heat very well. **\$1.50**
- GOLDEN FLEECE** (J. Sass, 1940). H.M., A.M. 1942; A.I.S. An outstanding sulphur yellow Iris. S. clear sulphur to lemon yellow; F. cream white with band of deeper yellow. 40 inches. **\$1.50**
- GOLDEN MAJESTY** (Salb., 1938). H.M. 1937; A.M. 1940; A.I.S. A deep golden yellow self of large size and beautiful form. 38 inches. **\$0.60**
- GOLDEN RUSSET** (D. Hall, 1946). H.M., A.I.S. 1947. This Iris produces the largest flowers, around seven inches high. The name describes best the rich coloring of this new variety. Stout stems, 40 inches tall. **\$7.50**

- GOLDEN TREASURE** (Schreiner, 1936). H.M. 1936; A.M. 1938; A.I.S. An exquisite cream Iris with golden light throughout the center. 3 feet. \$0.50
- GRAND CANYON** (Klein., 1941). H.M. 1943; A.M. 1941; A.I.S. Tones of plum and copper combined in a warm manner. A deeper than average blend richly attractive with a slight ruffling. Midseason. 38 inches. \$1.00
- GREAT LAKES** (Cousins, 1938). Dykes Medal A.I.S. 1942. A commanding blue without veining; beard almost white. A crisp flower of excellent form, strong stem which is better branched than any other Iris we have ever seen. Really fine. 40 inches. \$1.00
- HARRIET THOREAU** (Cook, 1944). H.M., A.I.S. 1945. A delightfully ruffled orchid pink self with great individuality. The silky texture, heavy substance and broad petals of this flower are rarely found combined with such delicate coloring. Very floriferous, making a lovely clump. 38 inches. Midseason. Very fine! \$3.00
- HOOSIER SUNRISE** (Lapham, 1942). H.M., A.I.S. 1943. A large pink blend warmly infused with buff. The broad S. and F. have excellent substance; the color is clean and fresh; the plant is floriferous. 40 inches. \$1.00
- INDIANA NIGHT** (Cook, 1942). H.M. 1942; A.M. 1944; A.I.S. A lustrous deep velvety purple. The richest and most satisfying dark Iris of a long series of seedlings from Sable, but this Iris starts flowering after Sable has shown its last blooms. A large flower that is excellent in every way. 38 inches. Midseason. Really outstanding! \$4.00
- JAKE** (J. Sass, 1943). A wonderful glistening white of heavy substance. Tall, well branched stems. 38 inches. One of the very best whites we grow. \$0.60
- JINNY SUE** (Wmsn., 1936). A lovely variegata of gold and pink effect. Tall well branched stems. Free flowering. 38 inches. \$0.75
- KATHERINE FAY** (Fay, 1945). H.M. 1945; A.M. 1947; A.I.S. A large ruffled pure white with no yellow in the center. The blooms are carried on a good strong well branched 35 inch stem. Hardy. \$5.00
- KENTUCKY BEAUTY** (C. Carpenter, 1943). This is a very effective rose bicolor which gives a very distinct color note to the garden. S. bright rose with a strong midrib of white; flaring F. are darker and more even in tone. 38 inches. Midseason. \$2.00
- KENTUCKY SUNSHINE** (Carpenter, 1943). An intense bright yellow Iris that is just a shade lighter than Golden Hind but larger and better formed. A self except for a touch of creamy white surrounding the rich yellow beard. 38 inches. \$2.50
- LADY MOHR** (Salb., 1944). H.M. 1944; A.M. 1946; A.I.S. Thus unusual Iris is a result of a cross from a bearded Iris to an *Oncocyclus* hybrid. Lady Mohr has inherited the best characteristics of both parents. S. are clear oyster white and F. a frosted chartreuse yellow with a large red-violet blotch at the base. 36 inches. \$5.00
- LADY NAOMI** (Fay, 1941). H.M., A.I.S. 1942. A large plicata that appears to be almost a self of pale lavender. The placata network of violet lines in the F. is so very minute and compact that the white groundwork seems to disappear. Haft has faint markings of brown. 38 inches. \$0.75
- LADY OF SHALOTT** (Schreiner, 1942). The white background is heavily flushed rose pink in the S. and delicately edged around the F. with an added peppering of minute dots. At a close examination the pink has a slight cinnamon cast in the sun. Midseason. 34 inches. \$1.50
- LAKE GEORGE** (K. Smith, 1945). H.M., A.I.S. 1945. A self of soft blue violet shading darker at the hafts. The slightly ruffled S. are roundly domed; beard light yellow tipped blue at the end. 38 inches. \$5.00

- LAKE SHANNON** (DeForest, 1945). H.M., A.I.S. 1946. A very large but graceful flower with wide, fluted S. and F. A rich satiny medium blue self with blue beard tipped orange inside the flower. Striking! **\$6.00**
- LANCASTER** (Cook, 1940). H.M., A.I.S. 1941. A handsome flower of lustrous warm old rose expressing great strength and character. Distinct from the "pink" or "rose" Iris by its very wide segments, especially the wide falls with a broad haft, and by its heavy substance. 36 inches. **\$0.60**
- L. MERTON GAGE** (Lapham, 1942). H.M., A.I.S. 1942. A large yellow toned medium shade of pink. The S. are Pale Salmon color over pale Massicot Yellow; F. Rosolane Pink to broad hafts of Baryta Yellow, reticulated Sayal Brown. Fine form, broad falls, excellent substance. 40 inches. **\$1.00**
- LOTHARIO** (Schreiner, 1942). A large rich blue bicolor. S. are light blue; F. rich plush blue purple; full orange beard. Lightly frilled. Very striking large flower. 38 inches. Midseason. Late **\$3.00**
- LOUVOIS** (Cay., 1936). A.M., A.I.S. 1939. A fine French variety in rich brown tones. S. light chocolate brown; F. rich red maroon with chocolate border. 35 inches. **\$0.60**
- LOVELY DAY** (Hill-Son). A very pale sky blue that turns cool white. Large blooms on well branched stalks. **\$0.50**
- LYNN LANGFORD** (D. Hall, 1946). A deep toned orchid pink with a golden yellow center which is smoothly blended into the orchid pink without veining. A large flower of good form and heavy substance. 36 inches. Midseason. **\$8.00**
- MADAME MAURICE LASSAILLY** (Cay. 1935). Dykes Medal France 1935. A larger, taller Amigo in somewhat lighter tones. S. flax blue; F. violet blue edged lavender. Midseason. 36 inches. **\$1.00**
- MAJENICA** (Cook, 1941). H.M., A.I.S. 1943. A distinct salmon pink blend that is pleasing in every way. The flower is large with broad petals; the color is clear and bright; the texture smooth and firm. 3 feet. Lovely! **\$1.00**
- MANDALAY** (Hall). H.M., A.I.S. 1943. A smooth reddish rose self, a new and attractive color. Hardy and free flowering. 30 inches. **\$1.00**
- MANYUSYA** (Sass-Hill, 1944). A lovely daughter of the famous Noweta in orchid pink tones. One of the fine new pinks that is vigorous and hardy. striking in a clump. **\$2.00**
- MARY E. NICHOLS** (Nich. 1939). H.M. 1940; A.M. 1943; A.I.S. Warm white self with gold inlay on haft, yellow beard. A lovely flower both in form and exquisite finish. 38 inches. **\$0.75**
- MASTER CHARLES** (Wmsn., 1943). H.M. 1944; A.M. 1946; A.I.S. A rich glowing mulberry Iris with a definite charm and flare to the form. The flower has a wonderful sheen that gives it the glowing rich effect. Substance is excellent and the color does not fade. S. true purple with overlaying black sheen blending to Madder brown at base; F. rich purple overlaid velvety black blending to Madder brown at haft. Beard, mulberry purple tipped brown. Vigorous, floriferous, and excellently branched. 38 in. **\$3.50**
- MATTIE GATES** (Sass Bro., 1946). H.M., A.I.S. 1946. A new yellow of the same reverse bitone as Golden Fleece but enough deeper in tone to make it distinct from that variety. Very fine. **\$20.00**
- MAYA** (Wash., 1935). H.M., A.I.S. 1935. A beautiful strawberry red self with a subtle blending of copper and rose in the throat. 38 inches. **\$0.40**
- MAY DAY** (D. Hall, 1939). H.M., A.I.S. 1939. A self color overlaid and burnished copper on soft apricot with a very light orange beard. 30 in. **\$0.40**

- MELANIE** (Hill, 1941). H.M., A.I.S. 1941. A lovely light pink blend of large size. Very lovely. 40 inches. **\$0.75**
- MELITZA** (Nesmith, 1940). H.M. 1940; A.M. 1942; A.I.S. An ivory pink with a vivid pinkish tangerine beard that lights the whole flower with its color. 40 inches. **\$0.75**
- MELLOWGLOW** (Whiting, 1942). H.M., A.I.S. 1942. Deep peach or apricot with a flush of pink. The S. are very wide and orchid in color; the F. broadly rounded and smoothly colored at the haft. 38 inches. **\$5.00**
- MEXICO** (Klein., 1943). H.M., A.I.S. 1944. A late flowering brilliant Iris that is a blended bicolor of buff golden S. and plush-like F. of glowing red brown. There is a coppery orange suffusion about it that makes it appear more as a blend than a definite bicolor. **\$2.00**
- MIDWEST GEM** (H. P. Sass, 1937). H.M., A.I.S. 1937. Heavily crinkled large flowers of bright golden apricot with faint pink cast on F. 36 in. **\$0.50**
- MIRABELLE** (Whiting, 1941). H.M., A.I.S. 1941. Alluring cream-apricot and pink tones combined in a most delectable manner. Excellent stems with fine branching. 38 inches. **\$3.50**
- MIRROR LAKE** (Muhl., 1947). H.M., A.I.S. 1948. A new and outstanding Iris. A flaring and waved blue of delightful form. **\$7.00**
- MOONLIGHT MADONNA** (J. Sass, 1943). H.M. 1943; A.M. 1945; A.I.S. A lovely new Iris of the same shade of lemon-ice as Elsa Sass with better form, large flowers and distinct ruffling. 3 feet. **\$2.00**
- MOONLIT SEA** (J. Sass, 1943). H.M., A.I.S. 1943. A very novel Iris that is white heavily flushed lavender violet; Empire yellow haft. It reminds one of a white and blue purple striped dress with a yellow sash. 35 inches. **\$0.50**
- MOUNT BLANC** (Grant, 1946). A new pure white with very flaring form and the heavy substance of a magnolia blossom. Large full bodied flower slightly ruffled at the edges of the F. with no haft markings. Clear, crisp and fresh. 39 inches. Stock limited. **\$6.50**
- MT. MCKINLEY** (Schreiner, 1947). This is a larger Wabash also having a better stem than Wabash. S. open with a hint of blue that quickly pales to cool white. F. are rich and glossy without margining or veining at the haft. Haft has a flush of chestnut. Early — Mid season. 38 inches. **\$3.50**
- MULBERRY ROSE** (Schreiner, 1941). H. M. 1943. A.M. 1944; A.I.S. A large flower of mulberry rose coloring with a bronze beard. A novel Iris that stands alone in its own color class. 38 inches. **\$1.25**
- NARANJA** (Mit., 1935). H. M. 1936; A.M. 1937; A.I.S. A deep yellow self with a distinct orange cast in the fall. 36 inches. **\$0.40**
- NED LEFEVRE** (Lapham, 1942). This lovely pinkish Iris has a coppery overtone which gives the appearance of a light brown self at first glance. The flowers are large and distinctive. Midseason. 36 inches. **\$0.50**
- NEW HORIZON** (Fay, 1946). H.M., A.I.S. 1947. A striking Iris close to true peach coloring with bright tangerine beard and peach pink buds. The standards are slightly deeper than the falls. Late. 38 inches. **\$10.00**
- NEW SNOW** (Fay, 1946). H.M. 1946; A.M. 1948; A.I.S. A lovely new ruffled white with flaring falls. The only color in the flower is a bright yellow beard. The stalk is sturdy and moderately well branched. 40 inches. Midseason. **\$10.00**
- NIGHTFALL** (D. Hall, 1942). H.M. 1943; A.M. 1945; A.I.S. F. velvety rich dark pansy purple, with almost no veining on the haft. S. lighter than the F., making a striking color combination. 3 feet. **\$1.00**

- NIGHTINGALE** (D. Hall, 1942). H.M., A.I.S. 1944. Very attractive color, a glistening golden russet. The large flowers have good form and substance. Strong stems. 3 feet. **\$1.25**
- OLA KALA** (J. Sass, 1943). Dykes Medal A.I.S. 1948. A very deep intense yellow almost on the orange side. A flaring slightly ruffled flower on tall stems withstanding weather excellently. 38 inches. very fine. **\$2.50**
- ORANGEMAN** (Waters, 1946). H.M., A.I.S. 1947. A lovely huge orange self with a touch of deeper orange at the haft. The flower has a wonderful smooth, well groomed look; the coloring is even and rich. The tall stems, 40 inches high, are very well branched. Outstanding. **\$5.00**
- OREGON SUNSHINE** (Nat'l, 1939). A light uniform yellow Iris of sturdy strong growth. No flecking is seen in the flower. 38 inches. **\$0.50**
- PATRICE** (DeForest, 1945). H.M., A.I.S. 1946. A tall plicata with light cream S. flushed pale rosy lavender; F. flaring white brushed soft bright gold across the haft, speckled rose brown. 38 inches. **\$3.00**
- PATRICIA** (H. P. Sass, 1939). A sparkling frilly white. Not a large Iris, but its charm lies in its ruffledness, yellow beard. 38 inches. **\$0.60**
- PEMANENT WAVE** (Williams, 1948). An unusual new flower, a sweet lavender shading to blue with golden brown hafts with a metallic lustre. The well rounded flower has horizontal flaring falls. Midseason to late. 40 inches. **\$14.00**
- PERSIAN PRINCE** (H. P. Sass, 1941). A.M., A.I.S. 1942. A very brilliant variegata with even clearer color than City of Lincoln but lacking yellow margin on F. S. clear yellow; F. velvety ox-blood red. 3 feet. **\$0.75**
- PINK BOUNTIFUL** (Cook, 1949). See page 3 for description. **\$15.00**
- PINK CAMEO** (Fay, 1946). H.M. 1946; A.M. 1948; A.I.S. A beautiful translucent cameo pink with striking tangerine-orange beard. Good substance, flowers slightly flaring, excellently branched stem, 36 inches. **\$10.00**
- PINK REFLECTION** (Cook, 1942). H.M. 1942; A.M. 1944; A.I.S. A chamois skin pink blend of unique quality and individuality; beard is lemon chrome. The crisp clean-cut flowers are of good size and for such a delicate colored variety it has extremely heavy substance, attractive flaring form. Late. Lovely! 3 feet. **\$3.00**
- PIUTE** (N. J. Thomas-Thorup, 1937). A deep rich red toned self with a bronzy undercast giving the whole flower a warm glow. 3 feet. **\$0.40**
- PRAIRIE SUNSET** (H. P. Sass, 1939). Dykes Medal, A.I.S. 1943. A blending of peach, apricot, rose, copper and gold, making a warm, glistening flower impossible to describe. 3 feet. **\$1.00**
- PREMIER PEACH** (D. Hall, 1946). H. M., A.I.S. 1946. A clear pinkish peach self with no haft markings, of heavy substance and good form. Vigorous and free flowering. 34 inches. **\$8.00**
- RADIATION** (Hall, 1948). H.M., A.I.S. 1948. A new light raspberry colored Iris! A pleasing tone of orchid pink with a deep tangerine beard. The S. and F. are the same color without any venation on the haft. The well branched stalk is 32 inches tall. **\$22.50**
- RAEJEAN** (Whiting, 1940). H.M., A.I.S. 1942. A large, late, two toned yellow of pleasing personality. The S. are deep chrome yellow, the wide F. are of lighter tone edged with deeper yellow. 38 inches. **\$0.75**
- RANGITIKI** (Stevens, 1941). A lustrous dark reddish self. Large flowers of faultless form and heavy substance. Seedling of Inspiration and this one is from New Zealand, too. **\$1.00**

- RED BONNET** (Gage, 1939). H.M., A.I.S. 1939. One of the purest reds, a dark red self. 36 inches. **\$0.50**
- RED GLEAM** (Lapham, 1939). A rich red with a chestnut cast, velvety and brilliant. Good sized flower on 34 inch stems. Very fine. **\$1.00**
- RED VALOR** (Nich., 1939). Roman Gold Medal 1940; H.M. 1940; A.M. 1943; A.I.S. A superb velvety red that has wonderful finish and substance. A garnet red with brown beard. 38 inches. **\$2.00**
- REDWARD** (Cook, 1942). H.M., A.I.S. 1945. A brilliant crimson Iris of large size and perfect form. The substance is excellent; flowers withstand sun, wind and rain. S. Indian lake and dahlia carmine; F. burnt lake. Mid-season to late. This variety is not tall, 32 inches, but the brilliant lustrous color makes it valuable for the front of the border. Very fine. **\$4.00**
- RELENTLESS** (Cook, 1948). A new Iris that is a solid deep red with color pure and rich throughout the whole flower, even extending over the hafts; beard cadmium yellow. The flowers are medium large in size with excellent substance and texture. Color does not fade or spot in sun or rain. Mid-season — late. 38 inches. Relentless shows more richness and brilliance than any other Iris in this color group. Exceptionally fine. **\$12.50**
- REMEMBRANCE** (D. Hall, 1942). H.M. 1943; A.M. 1944; A.I.S. A lovely yellowish pink blend. An excellent Iris in every way. 38 inches. **\$2.00**
- RHAPSODY** (Wmsn., 1937). This lovely Iris is like changeable silk — a symphony in violet purple and brown. Very late. 38 inches. **\$0.75**
- ROCKET** (Whiting, 1945). H.M. 1945; A.M. 1947; A.I.S. The S. are of pure, deep chrome and the F. are orange chrome almost to the edge. The flowers are large, wide petalled, classically formed and of heavy substance. 38 inches. **\$15.00**
- ROSE SPLENDOR** (Klein., 1947). H.M., A.I.S. 1948. When flower is fully opened it is very pink, a luscious color remindful of a ripe watermelon except for the slight coppery tints. 3 feet. **\$11.00**
- ROSE TOP** (H. P. Sass, 1941). H.M. A.I.S. 1943. A very bright rose-pink plicata. The large blossoms are highly ruffled, ground color is deep cream with a heavy pattern of vivid rose-pink stitching. Midseason. 34 in. **\$3.50**
- ROYAL SCOT** (D. Hall, 1944). H.M., A.I.S. 1944. A tall large flowered burgundy red trimmed plicata. It is so heavily trimmed that at a distance it gives a red effect. Very vigorous. **\$2.00**
- RUTH POLLOCK** (H. P. Sass, 1939). H.M. 1939; A.M. 1941; A.I.S. The ground color of soft yellow is stitched and dotted with deep maroon, the S. being deeper than the F. Medium, well shaped, ruffled flowers. 3 ft. **\$0.50**
- SABLE** (Cook, 1938). H.M. 1937; A.M. 1940; A.I.S. Roman Certificate 1938. An almost perfect black Iris with a lustrous, silky sheen possessing an unsuspected brilliance not common with the dark colored varieties. S. and F. fluorite violet; beard deep soft blue violet. 40 inches. **\$1.00**
- SALAMONIE** (Cook, 1946). H.M., A.I.S. 1946. An exquisite light pink blend, richly yet delicately colored. In the sun it sparkles like a lovely jewel. Of pleasing shape, firm substance and beard light cadmium. Tall sturdy stems. 38 inches. A new Iris for the connoisseur! **\$9.00**
- SAMOVAR** (D. Hall, 1941). H.M., A.I.S. 1941. A very brilliant coppery rose. S. are lighter than the falls. Not too tall but free flowering, which makes it fine for border massing. **\$0.50**
- SANTA ROSA** (Mit. Salb., 1943). A very tall rosy bicolor with venation at the haft. Midseason. **\$1.50**

- SHANNOPIN** (Pillow 1939). A showy and unusual color combination, close to the amoena type. The ruffled S. are cream, the F. a blend of pink and rose. 38 inches. **\$1.00**
- SHARKSKIN** (G. Douglas, 1942). H.M. 1943; A.M. 1946; A.I.S. A lovely tall white Iris with velvety finish and firm substance. The F. are very flaring with a pale glistening yellow flush deep in the throat. 44 inches. **\$2.50**
- SILVER LUSTRE** (Carpenter, 1942). A light wistaria violet blue self with excellent form and substance. Hardy. 40 inches. **\$2.00**
- SNOQUALMIE** (Brehm, 1938). An exceptionally fine cream Iris smoothly finished with very heavy substance. Well branched. 40 inches. **\$0.40**
- SNOW FLURRY** (Rees, 1939). H.M. 1939; A.M. 1941; A.I.S. Flowers pure icy white, beautifully ruffled. F. big, broad and pure white, waved and crimped at the edges. Early, midseason. 4 feet. **\$1.25**
- SNOW VELVET** (H. Sass, 1942). H.M., A.I.S. 1942. An excellent, very velvety textured white Iris with a definite yellow throat. The flower withstands wind, sun, and rain in fine manner. Midseason. 38 inches. **\$1.50**
- SOLE MIO** (Van Tubergen, 1938-1939). Silver Medal Rome 1938. A huge clear deep yellow. The Iris has a soft glow making it lovely for combination with other Iris. Tall. **\$1.50**
- SOUSUN** (Essig, 1945). H.M., A.I.S. 1945. This is a new Iris of distinction that is much needed in the "cream" color class. A pale yellow laid over a shining ice-like background. Its clean color makes it outstanding in its color class. Large flowers of firm texture. Midseason, late. 38 inches. **\$4.00**
- SPARKLING BLUE** (Grant 1942). This almost flax blue self is very aptly named, for the whole flower glistens and sparkles as if dusted with tiny frost crystals; beard, yellow. 41 inches. **\$1.50**
- SPINDRIFT** (Loomis, 1944). H.M., A.I.S. 1945. A translucent delicate flamingo color with a deep tangerine colored beard; F. are sometimes specked with deeper tangerine. 36 inches. **\$3.00**
- SPRING CLOUD** (Jory, 1935). A most charming Iris of S. pure, clean white very heavily marked and sanded blue; F. pure clean white. 3 feet. **\$0.50**
- SPUN GOLD** (Glutz, 1940). Dykes Medal A.I.S. 1944. A striking velvety golden yellow. No veining or shading mars the purity of coloring which is enhanced by a rich beard. Perfection in form, styling and color. 38 in. **\$1.50**
- STARDOM** (D. Hall, 1941). H.M., A.M. 1943; A.I.S. A blend of coppery pink and apricot buff made brilliant by an orange beard. Medium size flowers. Vigorous grower. 34 inches. **\$0.75**
- STARLESS NIGHT** (J. Sass, 1941). H.M., A.I.S. 1943. Very dark blackish purple self with reddish sheen in the sun. The flowers are medium to large in size with fine form and substance. 3 feet. **\$1.00**
- STARWOOD** (Williams, 1943). This Iris opens a pure, deep yellow but on the second day S. and the edges of F. lighten a little, leaving a deep yellow center on F. Flower does not fade further than this. 38 inches. **\$0.75**
- STORM KING** (Nich., 1940). H.M., A.I.S. 1941. A top notch massive dark Iris. Where Sable is a blue purple, Storm King is a true purple with no haft markings. Late. 48 inches. **\$1.50**
- SUNNY RUFFLES** (Waters, 1943). A charming heavily ruffled clear lemon yellow chrome. The F. pales toward the center with a darker border of yellow. There is no veining to mar its smoothness. The ruffled and unusual shape of the buds adds to the charm of the plant. Early to late. 38 inches. Beautiful in a clump. Very fine. **\$1.50**

- SUNSHINE** (D. Hall). A fine deep rich toned yellow of excellent form and substance. Very floriferous. 35 inches. **\$1.50**
- TEA ROSE** (Whiting, 1944). H.M., A.I.S. 1945. A pure self of glowing copper pink. The color is strong and warm enough to be seen across the garden, yet clear and delicate. Floriferous. 3 feet. **\$3.00**
- THE ADMIRAL** (D. Hall, 1941). H.M., A.M. 1944; A.I.S. A clean, bright medium blue self with a wonderful silky lustrous quality. The flower holds its color well, has a clean, unmarked haft. 37 inches. **\$1.00**
- THE BISHOP** (Wash., 1937). H.M., A.I.S. 1938. A smoothly finished long flower of intense Bishop's purple. Midseason. 38 inches. **\$0.75**
- THE RED DOUGLAS** (J. Sass, 1937). Dykes Medal A.I.S. 1941. An excellent dark red self of fine proportions, large flowers. 38 inches. **\$1.00**
- THREE CHEERS** (Cook, 1945). H.M., A.I.S. 1946. A striking brilliant blue bicolor. The large well shaped flower has clear light blue S.; the F. are dark violet with narrow border the color of the S. The prominent beard accents the rich, bold coloring. Vigorous. 42 inches. Very fine. **\$6.00**
- THREE SISTERS** (DeForest, 1941). A striking color contrast of cream and red. S. pale cream, near white in the sun; F. red violet. 42 inches. **\$1.00**
- TIFFANJA** (DeForest, 1942). H.M. 1944; A.M. 1946; A.I.S. A distinctly different plicata having spreading form and good substance. S. colonial buff; F. creamy white bordered buff brushed at the haft and speckled around the border with light brown; large flower. 42 inches. **\$1.50**
- TIFFANY** (H. P. Sass, 1938). H.M. 1938; A.M. 1943; A.I.S. A large yellow plicata, S. suffused lilac; F. lightly dotted a deeper lilac. 3 feet. **\$0.50**
- TISHOMINGO** (Caldwell, 1942). H.M. 1942; A.M. 1944; A.I.S. A large clear wistaria blue. A frosty flush around the beard envelops the whole flower and accentuates the cool crispness. 40 inches. **\$1.50**
- TITIAN LADY** (G. Douglas, 1941). H.M., A.I.S. 1941. A lovely well rounded pure white Iris with an intense tangerine beard. Midseason, late. 40 inches. **\$1.00**
- TOBACCO ROAD** (Klein., 1942). H.M. 1944; A.M. 1946; A.I.S. A very distinctive Iris of rich golden tobacco brown. Large flower with very heavy substance and trim flaring form. 34 inches. **\$5.00**
- TRANQUIL MOON** (Cook, 1948). A fresh and gay new Iris with S. a light pure yellow, barium yellow, the slightly ruffled falls are silvery white with a narrow margin of the light yellow; hafts have the same clear coloring of the S.; beards, lemon chrome. One the most distinguished characteristics of this flower is its formal style with brisk horizontal falls. A large flower with exceptionally heavy substance and sparkling finish. Midseason, late. 40 inches. Wonderful! **\$15.00**
- VEISHEA** (Whiting, 1943). H.M., A.I.S. 1946. A bright blend of copper and with a dashing blaze of blue in the F. The flowers are very large and full formed, a little too large for its height, maybe. 34 inches. **\$1.50**
- VIIPURI** (Wmsn., 1940). A lighter colored and slightly ruffled Wabash. S. pale lavender; F. violet purple shading to a margin like the S. with a light streak down the center. 33 inches. **\$0.75**
- VIOLET SYMPHONY** (K. Smith, 1940). H.M. 1940; A.M. 1943; A.I.S. Gleaming violet self, huge in size and bearing many perfectly shaped flowers. Uniform in color except for a slight flush at the haft. 40 inches. **\$1.00**

BRIEF DIRECTIONS FOR PLANTING AND CARING FOR BEARDED IRIS

Sweet, well drained soil, free of roots of other plants, preferably with some lime, and all the sunshine possible. No fresh manure, no tree leaves; clean, shallow cultivation and no litter or mulch about the plants from early Spring until the ground freezes in the Fall. A light Winter mulch of corn fodder or straw, brought up about the plants rather than thrown on them, is beneficial but is not necessary except for plants recently planted and not well established. Bone-meal is satisfactory fertilizer. Well rotted manure may be used if well spaded under, so there is no humus in contact with the rhizomes. Wood ashes may be used freely.

A plant ready for planting consists of two essential parts—the leaves and the rhizome (often mistakenly called bulb). Moderate drying does not injure the leaves or rhizomes. If the soil is dry at planting time, fill the trench or hole with water and, after it has soaked into the ground, spread the roots over the moist surface and draw soil over them, tramping it down firmly and covering with loose soil. The rhizome should be just below or at the surface and should be held firmly in place if the soil has been properly packed over the roots.

Rarely, due to high temperatures and humidity, slimy bacterial decay will attack the leaves and rhizomes of plants in transit. When such plants are received, wipe off all the moist and decayed parts with a rag or ball of paper or excelsior, and dust the base of the leaves and the rhizome thoroughly with sulphur, powdered gypsum or plaster of paris. Plant at once with the upper surface of the rhizome exposed to sun and air. Keep plant under observation to see if disease is checked. If the disease progresses, treat as directed for rhizome rot.

RHIZOME ROT. This bacterial disease reduces the lower parts of the leaf and the rhizome to a mushy mass with a very offensive odor. Give a gentle pull to adjacent leaves to see if the disease has spread beyond the area you have detected. Scrape out all disease and softened tissue and pack the cavity with powdered gypsum. Scatter gypsum on the ground about the diseased area until the surface is white. Examine the plant from day to day to see if the disease is checked. If gypsum is not obtainable, expose the diseased portion to sunlight, or plant may be dug, cleaned of diseased section, and placed in the sun for a couple of days. After plant is sun cured, plant in freshly spaded ground. Be sure plants are in well drained soil.

MUSTARD SEED FUNGUS. This is recognized, first by rotting of the leaves at the ground. Upon closer examination, in the early stage the rhizome is webby, in the more developed stage the leaves at the rhizome are slimy and have fungus deposit resembling mustard seed. Pull the soil away from the plant, dust with gypsum or leave exposed to sun. Good drainage is essential for a healthy, solid Iris plant. Soaking the plants in Semesan before planting is a fairly good preventive for both Mustard Seed Fungus and Rhizome Rot. Follow directions on can.

ROOT BORER. This worm starts its attack very early in the spring by starting at the top of the Iris leaves and eating its way down to the rhizome. The worm is very tiny when it first starts its damage and increases in size as it goes. After vigorous leaf growth is established in the Spring, watch for evidence and cut off the leaves below the point where the borer is working. Be sure you kill the worm and burn the leaves that have been cut off. The borer may be quite effectively destroyed now with DDT. With 50% DDT, used either as a spray or dust, start treating the Iris as soon as they begin to show growth in the spring and treat every week until the flowering season starts. Be sure to cover leaves thoroughly with the solution. For spray: 3 gallons water, 6 level tablespoons 50% DDT wettable, 1 level tablespoon Dupont Spreader Sticker. For dust: 9 parts dusting sulphur or talc, 1 part 50% DDT wettable. If dusting, treat in early morning when there is dew on the leaves.

IRIS SCORCH OR FIRE. This causes browning of the leaves so much that it eventually kills the plants. Upon digging the plant, the rootlets attached to the rhizome are dead. Exact cause and remedy for same are not known. Some believe it is caused by dampness, other by soil conditions. Three treatments have been used with some success: 1. Dig diseased plants and destroy them so that it does not spread; 2. Dig plants and turn bottom side up in sun for a month and replant; 3. Dig plants and soak in Semesan and, when dry, replant.

IRIS LEAF SPOT. This is prevalent during rainy seasons and usually does not seriously damage the plants unless it reaches the epidemic stage. The disease is a definite fungus spot. It can be spread while the foliage is damp by wind or by passers-by brushing the foliage. Careful trimming of foliage below infected areas in early stage will prevent its spreading. Bordeaux Mixture applied to foliage after trimming helps to some degree. Best preventive is to keep garden clean of all litter from early spring to late fall.

The Longfield Iris Farm

BLUFFTON, INDIANA

Make out your order on this page which you are to keep to use as a check when your plants are received. On the reverse sheet are brief but valuable suggestions for the planting and care of Iris. When you have this order exactly as you want it, copy it on the opposite order blank, filling in your name and address plainly, and mail it to The Longfield Iris Farm. Please check the squares on the reverse side of the order sheet you mail us.

Date..... I paid with.....

.....

.....

Quantity	Variety	Price

The Longfield Iris Farm

BLUFFTON, INDIANA

Amount Enclosed \$ Date

Name (Mr., Mrs. or Miss)

Street or R. F. D. No.

Post Office State

Quantity	Variety	Price

CUT ON THIS LINE

SHIPPING DATE { Ship on or about
Do not ship before
Do not ship after }

No Iris shipped between May 15 and June 15

Please see reverse side and check the squares as you wish.
Iris orders under \$2.00 must include 25c for postage.
Hemerocallis orders under \$3.00 must include 35c for postage.

No substitutions under any circumstances.

For any variety you cannot furnish, you may substitute one or more of your own introductions, not now in my collection, of a value at least two times the value of the variety you cannot furnish.

You may send my order by express, charges collect, enclosing varieties of your own introductions, not now in my collection, to reimburse me, with the understanding that you guarantee the transaction satisfactory to me in every particular.

Please draw a line through those varieties listed below that are now in your Iris collection: Action Front, Amigo, Anna Williamson, Bunting, Captain Wells, Castalia, Chewink, Copper Rose, Daystar, Decennial, Distance, Dorothea K. Williamson, Dreamcastle, Dubrovnik, E. B. Williamson, Flamely, Harriet Thoreau, Indiana Night, Jinny Sue, Kinglet, Lancaster, Majenica, Master Charles, Nambe, Orangeman, Pewee, Pink Bountiful, Pink Reflection, Redward, Relentless, Rhapsody, Sable, Salamonie, Shawano, Siskin, Sunny Ruffles, Tranquil Moon, Three Cheers, Titmouse, Two for Tea, Viipuri, Wabash, Warbler, Widget, Whistling Swan, Worthington.

- WABASH** (Wmsn., 1936). Dykes Medal, A.I.S. 1940. Probably the most outstanding amoena of today. The white S. and hyacinth violet F. with a very definite white margin are a wonderful contrast that is both pleasing and attractive. 39 inches. \$0.75
- WHISTLING SWAN** (Waters, 1948). A stunning new white Iris that is slightly ruffled, has heavy texture and a sparkling finish. The whiteness carries completely through the flower; haft is white clear up to the S., where gold reticulations extend down into the center; the beard is white, shading to yellow in the center. A large flower, beautifully formed, carried on tall 40 inch stems. Here is a white that everyone has been asking for—a real white that is completely hardy and grows like a weed. \$7.00
- WHITE WEDGEWOOD** (Grant, 1943). H.M. 1943; A.M. 1945; A.I.S. The flower first opens very light blue that soon changes to pure white except for a slight blue flush at the haft. The purity of the flower is in sharp contrast to the heavy dark blue beard. Large strong flowers well placed on a sturdy well branched stem. 36 inches. \$3.50
- WILD ORCHID** (Kellogg, 1940). This Iris is a self of wild orchid coloring. The haft carries a copper flush. Vigorous. 40 inches. \$0.50
- WINTER CARNIVAL** (Schreiner, 1941). H.M., A.I.S. 1942. An outstanding white that is tall with large nicely proportioned flowers. The waxy snow-white Iris has a lavish gold throat. 40 inches. \$1.00
- WORTHINGTON** (Cook, 1943). A harmonious bicolor of pleasing rosy red, the color particularly clear and bright. S. Persian lilac; F. velvety Indian lake, paling slightly at edge; beard primuline yellow. An Iris of every good quality. Visitors are always attracted to this brilliant rosy red. Vigorous. 3 feet. \$2.00

Join The American Iris Society

Every gardener should join the great company of flower enthusiasts composing the American Iris Society. Each new member receives four valuable booklets each year, recording the development of this charming flower. Your membership will help you in planning your garden picture, will assist you in appraising more surely the value of new introductions.

Membership dues are \$3.50 per year. Send your remittance with a letter of application to the Secretary of the Society, Geddes Douglas, 444 Chestnut St., Nashville, Tennessee. The American Iris Society also has published a book entitled "Irises" written by the members of the American Iris Society. Price per copy with permanent binding \$2.50, with paper binding \$1.50.

Color Chart

In this color classification of Iris, we have tried to separate, as nearly as possible, each Iris into a standard group. An explanation of terms used may help the beginner: a "self" is an Iris with the standards and falls the same color; a "bicolor" is an Iris with the standards lighter color than the falls; a "neglecta" is a purple bicolor; an "amoena" is an Iris with white standards and colored falls, sometimes veined or margined white; a "plicata" is an Iris with petals sanded, veined or otherwise marked with a color darker than the ground color; a "variegata" is an Iris with standards yellow, gold, or orange and falls heavily veined a darker color or completely of a darker color. The standards of an Iris are the three upright petals, designated with the letter "S" in descriptions. The falls of an Iris are the three lower or hanging petals, designated by the letter "F."

Descriptions and prices of the following varieties may be found listed alphabetically among the Tall Bearded Iris starting on page 3.

WHITES

Arctic
Jake
Katherine Fay
Mount Blanc
New Snow
Patricia
Sharkskin
Snow Flurry
Snow Velvet
Titian Lady
Whistling Swan
White Wedgewood
Winter Carnival

WHITE GROUND PLICATAS

Blue Shimmer
Edith Rorke
F. B. Mead
Lady Naomi
Lady of Shalott
Patrice
Rose Top
Santa Rosa
Spring Cloud

YELLOW GROUND PLICATAS

Balmung
Coritica
Firecracker
Royal Scot
Ruth Pollock
Tiffanja
Tiffany

AMOENAS

Choir Boy
Extravaganza
Mt. McKinley
Shannopin
Viipuri
Wabash

NEGLECTAS

Amigo
Mme. Maurice Lassailly
Three Cheers

VARIEGATAS

Adios
City of Lincoln
Frank Adams
Jinny Sue
Persian Prince
Three Sisters

ORANGE TONES

Naranja
Ola Kala
Orangeman
Rocket

YELLOW BLENDS

Lady Mohr
Midwest Gem
Mirabelle

CREAMS

Amandine
Caroline Burr
Golden Treasure
Mary E. Nichols
Snoqualmie
Sousun

S. YELLOW, F. WHITE

Elsa Sass
Golden Fleece
Mattié Gates
Moonlight Madonna
Raejean
Tranquil Moon

YELLOWS

Admiration
Berkeley Gold
Buttercup Lane
Crown of Gold
Fair Elaine
Francelia
Golden Eagle
Golden Majesty
Kentucky Sunshine
Oregon Sunshine
Sole Mio
Spun Gold
Starwood
Sunny Ruffles
Sunshine

Color Chart

LIGHT BLUES

Azure Skies
Bandmaster
Blue Zenith
Chicory Blue
Distance
Frosty Blue
Great Lakes
Lovely Day
Mirror Lake
Silver Lustre
Sparkling Blue
Tishomingo

MEDIUM BLUES

Betty Campbell
Blue Glow
Chivalry
Danube Wave
Lake George
Lake Shannon
The Admiral

BLUE PURPLES

Bonsor
Indiana Night
Lothario
Nightfall
Rhapsody
Sable
The Bishop

COPPER TONES

Bryce Canyon
Buckskin
Casa Morena
Far West
Golden Russet
May Day
Ned Lefevre
Nightingale
Prairie Sunset
Samovar
Stardom
Tobacco Road

FLAMINGO PINKS

Bonny
Buffawn
Courtier
Flora Zenor
Melitza
New Horizon
Pink Cameo
Premier Peach
Radiation
Spindrift

PINK SELFS

Anna Williamson
Majenica
Melanie
Pink Bountiful
Pink Reflection
Remembrance
Salamonie

ORCHID PINKS

Chantilly
Dreamcastle
Harriet Thoreau
Lynn Langford
Manyusya

PINK BLENDS

Alastor
Carillon
China Maid
Copper Pink
Daybreak
Easter Bonnet
Erma Neale
Hoosier Sunrise
Lancaster
L. Merton Gage
Mellowglow
Tea Rose

VIOLET TONES

Moonlit Sea
Mulberry Rose
Permanent Wave
Violet Symphony
Wild Orchid

REDS

Chief Poking Fire
Christabel
Ethelyn Kletz
Garden Glory
Kentucky Beauty
Red Bonnet
Red Gleam
Redward
Relentless
Worthington

COPPER REDS

Action Front
Copper Rose
Flamely
Flora Campbell
Maya

RED PURPLES

Captain Wells
Crimson Tide
Damerine
Deep Velvet
Display
Elmohr
Master Charles
Piute
Red Valor
Starless Night
Storm King
The Red Douglas

RED BLENDS

Arethusa
Carousel
Grand Canyon
Louvois
Mexico
Veishea

ROSE PINKS

Burgundy Rose
Mandalay
Rangitikei
Rose Splendor

Made-to-Order Collection

LOT C

This is a collection you can make to blend with your own garden. The proposition is as follows:

1. You select the plants you want from the list below, **one** of each kind, as many kinds as you wish, but not less than **five** kinds.

2. You add up the prices of the kinds you have selected, deduct one-third of the total, and remit the balance, but the amount remitted must not be less than \$3.00.

3. Each plant will be a properly labeled full-sized plant and the order will be sent prepaid by express or mail as you direct, guaranteed satisfactory.

\$1.00 EACH

Balmung
Blue Zenith
Copper Pink
Deep Velvet
Flora Zenor
Great Lakes
Hoosier Sunrise
L. Merton Gage
Majenica
Nightfall
Rangitikei
Red Gleam
Sable
Starless Night
Titian Lady

\$1.50 EACH

Action Front
Berkeley Gold
Captain Wells
Copper Rose
Coritica
Flamely
Sole Mio
Sparkling Blue
Spun Gold
Storm King
Sunny Ruffles

\$2.00 EACH

Azure Skies
Daybreak
Red Valor
Remembrance
Royal Scot
Worthington

\$2.50 EACH

Blue Shimmer
Ola Kala
Sharkskin

\$3.00 EACH

Harriet Thoreau
Pink Reflection
Spindrift
Tea Rose

\$3.50 EACH

Master Charles
White Wedgwood

\$4.00 EACH

Indiana Night
Redward

\$7.50 EACH

Dreamcastle

\$5.00 EACH

Anna Williamson
Blue Glow
Katherine Fay
Orangeman

\$6.00 EACH

Lake Shannon
Three Cheers

\$9.00 EACH

Distance
Salamonie

Standard Varieties

35c Each

Any 12 plants selected from the list below for \$3.00, **shipped express collect, only**. To help cover your cost of the express charges, we will include, gratis, with your order, one of the following Iris, your selection. Please list a second choice, too. Action Front, Captain Wells, Spun Gold, and Storm King.

The Iris in this list may also be purchased at the rate of three plants of **one** variety for 70c.

All plants labelled and guaranteed true to name.

- | | |
|--|--|
| Amitola—satiny bronzy pink, 3 ft. | Gudrun—huge white, 30 inches. |
| Black Valor—rich violet black, 3 ft. | Helios—S. lemon; F. same pencilled rose. |
| Black Wings—midnight blue bicolor, 34 inches. | Lighthouse—bright coppery red, 3 ft. |
| Bo-Peep—orchid pink and cream, 3 ft. | Mary Geddes—salmon overlaid Pompeian, 38 inches. |
| Burning Bronze—bronzy dark red, 3 ft. | Mary Williamson—dainty S. white; F. purple, 30 inches. |
| California Gold—tall golden yellow. | Mata Hari—intense purple, late. 38 in. |
| Cheerio—S. red flushed gold; F. velvety red. | Moonglo—soft yellow blend, 32 in. |
| Coronet—golden rosy beige, 34 in. | Mountain Snow—large blue white, 40 inches. |
| Creole Belle—satiny Bushop's purple, 38 inches. | Narain—silky indigo blue, 38 inches. |
| Decennial—S. bright yellow; F. carmine, 32 inches. | Naronda—bright medium blue, 38 in. |
| Dubrovnik—brilliant rosy blend, 3 ft. | Noweta—ruffled pink and cream, 30 in. |
| E. B. Williamson—glowing coppery red, 3 feet. | Ozone—mauve with brown flush, 3 ft. |
| Eros—silky salmon pink, 42 inches. | Rosy Wings—coppery red, 38 inches. |
| Ethel Peckham—large, reddish, 3 feet. | Sandia—large deep pink blend, 39 in. |
| Exclusive—lustrous steel blue. | Shining Waters—clean light blue, 44 inches. |
| Fairylea—white edged blue. 32 inches. | The Black Douglas—blackish red purple, 3 feet. |
| Flamingo—large rosy red. 3 feet. | Violet Crown—large pale violet, 3 ft. |
| French Maid—buff flushed orchid, 38 inches. | Wasatch—large white marked bronzy blue. |
| Gaucho—brilliant yellow; van Dyke red. 32 inches. | William Carey Jones—fine large cream. |
| Golden Hind—small bright yellow, 30 inches. | Winneshiek—large deep blue black |

Standard Varieties

25c Each

Any 15 plants selected from the list below for \$2.00, **shipped express collect, only.** To help cover your cost of the express charges, we will include, gratis, with your order, one of the following Iris, your selection. Please list a second choice, too. Deep Velvet, Hoosier Sunrise, Majenica, Rangitikei, and Sable.

The Iris in this list may also be purchased at the rate of three plants of **one** variety for 50c. Varieties marked *, 12 plants of **one** variety for \$1.50, express collect.

All plants labelled and guaranteed true to name.

- | | |
|--|---|
| *Aline—smooth medium blue. | Hyacinthus—large red brown, tall. |
| Alta California—bronzy yellow, tall. | Indian Chief—S. light red; F. deep red. |
| *Amanecer—pink and yellow blend. | Lent A. Williamson—bronzy purple. |
| *Amenti—blue and grey blend. 3 ft. | Luzianna—bright blue, 30 inches. |
| Anndelia—delicate pink plicata. | Mary Barnett—blue, yellow beard. |
| Baldwin—deep purple. Tall. | Mozambique—large red violet, 37 in. |
| *Beau Sabreur—S. yellow; F. ox-blood. | Numa Roumestan—small deep red. |
| Bergama—S. bronzy yellow; F. purple. | Omaha—large, soft pink and red. |
| *Blue Danube—deep blue self. 34 in. | *Onyx—S. cream; F. violet. |
| *Blue June—large blue. 40 in. | Opaline—pink and yellow, tall. |
| Bluet—pale blue self, early. | Pervaneh—short grey white. |
| *Blue Velvet—velvety dark blue. | Pink Lotus—rose pink, 3 ft. |
| Beuchley Giant—large blue, tall. | Pink Opal—tall, large orchid pink. |
| *Cantabile—S. white; F. violet; 32 in. | Pink Satin—pinkish, 3 feet. |
| *Cantata—intense purple, early. | Pink Vista—orchid pink blend. |
| Castalia—very fine blue. 3 ft. | Pres. Pilkington—buff and blue. |
| *Cinnabar—rich red purple, tall. | Rameses—large pink and yellow. |
| Coronation—golden yellow self | Shah Jehan—S. buff; F. plum red. |
| *Crystal Beauty—tall white. | Shasta—tall, hardy, white. |
| *Dauntless—dark rosy red self. | Snow White—pure white, 3 feet. |
| Depute Nomblot—large bronzy red. | *Spokan—red brown blend. |
| Dog Rose—orchid pink, tall. | Stipples—white stippled violet. |
| *Dolly Madison—large mauve, yellow. | *St. Louis—tall deep navy blue. |
| Dorothy Dietz—S. bluish; F. violet. | Sumac—red purple. 39 inches. |
| Dr. Chas. Mayo—pinkish, 31 in. | Sundipt—bright yellow, 39 in. |
| Duke of Bedford—rich violet purple. | Talisman—golden apricot. |
| Ethelwynn Dubuar—orchid pink. | Toscana—yellow copper blend. |
| Evelyn Benson—rosy self, late. | Tuscarora—light red, tall. |
| Gay Hussar—S. lemon; F. blood red. | *Valor—blue violet bicolor, tall. |
| *Geo. J. Tribolet—reddish purple. | *Venus de Milo—creamy white, tall. |
| Grace Lapham—ruffled orchid pink. | White Crepe—snow white, 34 in. |
| *Hiamovi—large lavender blue. | Woodland—tall pinkish violet. |

Dwarf Iris

Dwarf Iris average about eight inches in height and most varieties flower from April to about the middle of May. Some of the varieties flower again in the fall. Dwarfs are excellent for use in the rock garden or at the front of the border.

- ALINDA** (Cook, 1946). Tiny flowers of clear rich red purple, the beard pale blue. Strong growing and very free, the plant is covered with bloom in the spring. Early. **\$0.75**
- ATROVIOLACEA**. Deep red violet. First dwarf Iris to flower. **\$0.25**
- AUTUMN QUEEN** (H. P. Sass, 1926). A fine dwarf flower. Fall blooming. **\$0.50**
- AZUREA**. H.C., R.H.S. Soft lavender blue. **\$0.50**
- CREAM TART** (Hill-Son). Glistening cream and olive yellow with wide extended F. and a dash of red in center of F. Very free and showy. **\$0.75**
- CYANEA** (G. & K., 1899). Rich violet purple with a white throat. **\$0.15**
- DIXMUDE** (Mil., 1916). S. aniline blue; F. rich crimson purple. **\$0.25**
- FLORIDA** (G. & K., 1899). Medium yellow self. **\$0.15**
- JEAN SIRET** (Andre, 1926). S. clear yellow; F. yellow flecked violet; unusual. Fall bloomer. **\$0.50**
- KEEPSAKE** (Cook, 1936). H.M., A.I.S. 1938. Tiny flowers of brightest yellow on very slender stems. Vigorous and hardy. 12 inches. **\$0.50**
- LITTLE ELSA** (Muhl., 1948). H.M., A.I.S. 1948. Lemon yellow flowers, F. deeper yellow shading lighter toward center and lower parts. F. semi-flaring. **\$2.00**
- LITTLE JEWEL** (J. Sass, 1939). Brown tan blend. **\$0.50**
- MIST-O-PINK** (Hill-Son). Very showy red pink with wide extended F. **\$1.00**
- TAMPA** (Cook, 1936). H.M., A.I.S. 1938. Tiny flowers of decided redness for a dwarf bearded Iris. Slender stems, 14 inches tall. **\$0.50**
- TONY** (H. P. Sass, 1931). Very free flowering rich red purple. **\$0.15**
- VIOLET GEM** (Cook, 1946). Tiny flowers of rich, dark blue violet, lighter blue beard. Strong grower and free flowering. Early, flowering at same time as Alinda. **\$0.75**

Intermediate Iris

These Iris, in general, flower just after the Dwarfs and just before the Tall Bearded Iris, thus filling in the blooming season. They vary in height from 15 to 25 inches and have relatively large flowers.

Those varieties marked thus * flower again in the fall.

- * **AUTUMN HAZE** (H. P. Sass, 1934). An attractive soft lavender of large size. **\$0.35**
- * **AUTUMN SUNSET** (Lapham, 1942). Large flowered blend of gold, rose and lilac. Tall. Fall flowering. **\$0.75**
- BLACK HAWK** (Schreiner, 1941). H.M. 1942; A.M. 1943; A.I.S. A rich velvety blackish purple, nearly a self. 28 inches. **\$0.35**
- BLUE BOY** (Fos., 1913). Violet self with same colored beard. **\$0.25**
- CHALLENGER** (J. Sass, 1929). Excellent dark purple bicolor, white beard. **\$0.25**
- CRYSORO** (Nich., 1931). H.M., A.I.S. 1932. Clear deep yellow. **\$0.25**
- GAYNELLE** (Richer, 1930). A fine, rich, clear deep yellow. **\$0.25**
- * **KANSAS INGLESIDE** (Hill, 1939). H.M., A.I.S. 1947. A warm toned red self. A fall bloomer that flowers quite late. **\$0.25**
- LEOTA** (Fry., 1923). Creamy white with F. faintly lavender streaked. **\$0.25**
- MAJOR**. Large flowered "bluish" bicolor. **\$0.25**

- MAYGOLD** (Nich., 1931). A canary yellow self of excellent form. \$0.25
MOONBEAM (Mur., 1927). Pure sulphur yellow with no markings. \$0.25
RED ORCHID (J. Sass, 1934). H.M., A.I.S. 1936. One of the reddest. \$0.25
RUBY GLOW (Schreiner, 1941). H.M. 1942; A.M. 1948; A.I.S. The richest and reddest of the "red" intermediates with a brilliant orange beard. Surpasses Red Orchid in color, size and brilliance. 26 inches. \$1.00
***SOUTHLAND** (H. P. Sass, 1934). H.M., A.I.S. 1936. Golden yellow. \$0.25
SUNBEAM (Mur., 1927). Satiny deep canary yellow. Very fine. \$0.25
***ZWANENBURG** (Denis, 1912). Blend of cream, violet, olive green, and maroon \$0.25

Table Iris

This charming group of Iris bloom with the Tall Bearded Iris but must not be compared with them. The small dainty flowers on slender wiry stems with narrow foliage make them suitable for cut Iris for the table, hence the name. These Iris are also very fine for the border as they are quite floriferous and graceful.

- BUNTING** (Wmsn., 1934). A medium blue violet self of fine form. 29 inches. \$0.50
CHEWINK (Wmsn., 1937). A dainty little Iris of light blue with a bright yellow beard. Very lovely. 18 inches. \$0.75
JOY (C. Carpenter). H.M., A.I.S. 1943. A blending of copper, orange, red and violet. A gem for brilliance in the border. Larger and sturdier than the usual Table Iris. Midseason. 24 inches. \$2.50
KINGLET (Wmsn., 1934). A deep golden yellow self with small well formed flowers on well branched stem. 29 inches. \$0.25
NAMBE (Wmsn., 1946). A lovely little Table Iris that produces a blue and gold effect in the garden. The arched S., slightly ruffled, are golden empire yellow; the F. are Hortense violet blended to margin of empire yellow. Midseason. 21 inches. \$1.25
PEWEE (Wmsn., 1934). A tiny pure white flower, well branched stems 17 inches high. Early. \$0.25
SISKIN (Wmsn., 1934). A lovely lemon yellow self with slightly open S. and flaring F. This and Pewee are the smallest of this group. 18 inches. \$0.50
TITMOUSE (Wmsn., 1934). Amber yellow speckled and edges Hortense violet. 31 inches. \$0.25
TWO FOR TEA (Auten, 1948). A lovely delicate orchid pink self, somewhat similar to Pink Satin in color but not quite as pink. Plant grows vigorously and has compact foliage. Midseason. 20 inches. \$2.00
WARBLER (Wmsn., 1935). A small, clean yellow formal flower. Very floriferous and clean habit of growth. 25 inches. \$0.25

Siberian Iris

The Siberian Iris are tall with slender stems and narrow, grasslike foliage. Flowers are much smaller than the Tall Bearded Iris and have narrow petals, making them fine for cut flowers. The plants do well in a moist location as well as in any good garden spot. They are not benefited by lime. Plant in spring or fall.

- CAEZAR** (Morg., 1930). Very dark blue. The petals are broad and straight hanging. 48 inches. \$0.35

- CAEZAR'S BROTHER** (Morg., 1932). H.M., A.I.S. 1936. The darkest and best Siberian; black pansy-purple. Tall and late flowering. \$0.75
- LLEWELLYN** (Cleve., 1929). Large flaring flowers of rich blue purple. Tall and upstanding. \$1.00
- PERRY'S BLUE** (Perry, 1912). A.M., R.H.S. Clear shade of sky blue with white markings on the F. 40 inches. \$0.50
- SKEENA** (Pres., 1938). A delightful dwarf Siberian of dark blue coloring. Late flowering. Especially good for rock garden. \$0.35
- SNOW CREST** (Gage, 1932). H.M., A.I.S. 1936. A lovely tall white. Large perfect flowers. \$1.00
- SNOW QUEEN**. A snowy white, large and well formed. 3 feet. \$0.50
- SNOWY EGRET** (Cleveland, 1938). Fine large pure white. 31 inches. \$3.00
- SUMMER SKY** (Cleveland, 1935). A dainty airy variety with white S. and F. pale blue. \$0.35
- TUNKHANNOCK** (Scheffy, 1945). Largest white, with flaring falls. Tall. \$5.00
- TYCOON** (Cleveland, 1938). The largest Siberian Iris to date. The huge flowers of violet blue are of splendid proportion. Outstanding. \$3.00

Beardless Iris Species

- DOROTHEA K. WILLIASON** (Wmsn., 1918). A hybrid of the beardless species *fulva* and *foliosa*. Large velvety flowers of the most vivid purple. Requires a moister situation than bearded Iris. Fine as a cut flower. 30 in. \$0.75
- I. ENSATA**. A native of Central Asia to Korea. A handsome soft lavender flower that blooms very early. This dainty little Iris nestles down among the foliage. 12 inches. \$0.50
- I. GRAMINEA**. A native of Southern Europe. Very fragrant. The small flowers of reddish violet bloom down among the foliage. Foliage is grass-like. Blooms well in full shade. Fine for rock gardens. 10 inches. \$0.75
- I. PSEUDACORUS**. A beardless Iris native to Europe. Strong foliage and flowers of brightest yellow. Suited to moist locations. \$0.35
- I. VIRGINICA**. This is the common Indiana wild marsh or swamp Iris. A light purple. \$0.35

SHIPPING TIME — LATE FALL OR EARLY SPRING, ONLY

Hemerocallis--Daylilies

This fine perennial was once called "Lemon Lily" by our grandmothers. One may also recall seeing the orange form growing wild along the countryside, with its thick fountain-like foliage, the lily-like flowers clustered atop the tall, wiry stems high above the green. Now with the rapid development and improvement in *Hemerocallis* we have many lovely varieties to lighten and grace our gardens. Daylilies are perhaps the easiest of all plants to grow, doing well in sun or shade, drought or dampness, but a happy medium of these conditions finds them at their best. In describing the flower, the three larger innermost divisions are called petals and the three smaller divisions are the sepals. By noting flowering time, one can select a number of varieties that will supply bloom from May to September.

- AFTERGLOW** (Stout). A most appealing and unusual color—pale buff and pastel peach with a rosy tint in the throat and mid-vein of the petals. Medium size flower but charming and clean appearing. Remains open evenings. July - August. 42 inches. **\$3.00**
- AMARYLLIS** (Betscher). Large golden orange flower slightly deeper in throat; recurving petals. July - August. 3 feet. **\$0.35**
- AMULET** (Nesmith, 1940). A lovely new ruffled pink. Light Chinese coral, delicately flushed azalea pink in center of petals and with a darker pink zone in the throat. July. 42 inches. **\$4.00**
- ANNA BETSCHER** (Betscher, 1930). Deep orange yellow, shaded reddish bronze. July. 3 feet. **\$0.75**
- *APRICOT** (Yeld). A.M., R.H.S. Light orange flower of medium size. May flowering. 2 feet. **\$0.25**
- *BAGDAD** (Stout). A brilliant and richly colored flower of rich brown and red tones. Attractive and pleasing. June-July. 4 feet. **\$0.25**
- BARONET** (Stout). A sprightly fulvous red flower of wide segments. Remains open evenings. June-September. 2 feet. **\$2.00**
- BOUNTIFUL** (Cook, 1943). An excellent wide-petalled lemon yellow. A seedling from Hyperion and an improvement on that variety. Flower large, of pleasing shape and color. Sun and rain resistant. Free flowering, hardy and vigorous. July. 32 inches. **\$1.25**
- BRUNETTE** (Stout). The first early dark toned variety. Throat yellowish orange; mid-zone madder brown; outside a lighter shade of tan-red. Small but very full flowers on much-branched stems. June-July. 30 inches **\$1.50**
- BUCKEYE** (Stout). Full, clear orange with large mahogany red eye. Prolific grower. Remains open evenings. June-July. **\$1.25**
- *BURBANK** (Burbank). A yellow with rather narrow segments. June-July. 3 feet. **\$0.25**
- CABALLERO** (Stout, 1941). A distinct bicolor. Petals vermilion-red, throat sepals golden yellow. A tall, gay, brilliant addition to the summer garden. July-August. 4 feet. **\$2.00**
- CAPISTRANO** (Milliken, 1948). Large, very bright strontian yellow. Petals $1\frac{3}{4}$ inches wide, reflexed and wavy. Sepals wax yellow. Very early and flowers over a long period. 4 feet. **\$6.00**

- CHENGTU.** Species. Sprightly, brilliant coppery orange-red with deep velvety carmine mid-zone. Flowers pleasingly recurved. July to late August. 3 feet. **\$1.50**
- CHLOE** (Nesmith, 1938). An excellent large, full ruffled flower with deep yellow background, flecked and powdered with warm golden sepia. The darker sepals of burnt orange are most unusual. July. 3½ feet. **\$2.50**
- CINNABAR** (Stout, 1931). Fine delicate shade of brownish red; sepals and petals of glistening gold; throat is cadmium yellow; outer half of petals sprinkled with rich fulvous red. July-August. 30 inches. **\$0.50**
- COLONIAL DAME** (Milliken, 1948). Large, light apricot flowers banded with a pale rosy tan, with throat of bright gold. They open wide 6 inches. The petals are very broad, ruffled along the edges and creped over the flattened portion. 3 feet. **\$20.00**
- COMET** (Russell). A striking large Hemerocallis—a pale yellow and red bicolor. Strong grower and free bloomer. **\$1.75**
- DAUNTLESS** (Stout, 1935). Very wide petals of pale yellowish orange with pastel blended mid-zone. Flowers of fine substance in a general pastel effect. July-August. 3 feet. **\$1.00**
- DELIGHT** (Cook, 1943). A soft pale yellow with pinkish ring in throat. A delightful combination of form and color. Flowers of open, spreading shape, the segments wide. Substance and texture good. Resistant to sun and heat. July. 3½ feet. **\$2.00**
- DOMINION** (Stout). Extra large, full flowers with rich red colorings in a concentric three-toned pattern. A strong and bold flower. June-July. 42 inches. **\$2.50**
- EARLIANA** (Betscher, 1937). An early flowering golden orange tone. A prodigious bloomer. June. 3 feet. **\$2.00**
- FESTIVAL** (Stout). A gay bicolor. Sepals orange with brown tinge; petals English red with darker veins and orange mid-stripe. Vigorous. July-August. 42 inches. **\$2.50**
- GAIETY** (Betscher). Wide open light lemon-yellow, large, wide-petalled with good substance. Evening flowering. June. 4 feet. **\$1.50**
- GEORGE KELSO** (Traub). Splendid large flowers, 5½ inches, whose beauty is enhanced by the pronounced ruffling of the petals. A bicolor, but of softer, more pleasing coloring than most. The sepals instead of clear yellow are a soft buff yellow and the petals instead of reddish are brownish fulvous. Early flowering. 3 feet. **\$3.00**
- GLOAMING** (Cook, 1936). Large open flowers with yellow background heavily overcast with reddish rose-purple. July-August. 42 inches. **\$1.00**
- GOLDENI** (Betscher). Deep golden orange flowers. Vigorous. July. 3 feet. **\$0.35**
- GOLD IMPERIAL** (Perry, 1941). Ruffled flowers of deep yellow. Large lovely flower on tall sturdy stems. July-August. 4 feet. **\$0.50**
- HESPERUS** (H. P. Sass, 1940). A marvelous lemon chrome with blooms 7 inches across. July. 4 feet. **\$1.50**

- HIGHLAND CHIEFTAIN** (Nesmith, 1940). A striking large flower, 5 inches, of wine purple with greenish yellow throat. July. 4 feet. \$2.50
- HONEY REDHEAD** (Nesmith, 1942). A very brilliant and unusual combination of colors that is highly praised. The flowers are open and flaring of velvety yet bright red with a distinct border of creamy yellow. July-August. 38 inches. \$5.00
- HYPERION** (Mead). A.M., R.H.S. Large, waxy, firm flowers of soft canary yellow. July-August. 42 inches. \$0.75
- *IMPERATOR** (Perry). Large, open star-shaped flowers of rich orange red, lined with sulphur. Very lovely. July-August. 4 feet. \$0.25
- MARGARET** (Cook, 1943). Large flowers of fine color, a solid, even buff yellow to very bottom of throat. Distinct from the usual golden and lemon yellows. The flowers have a smooth, refined look, substance and texture good. July. 3 feet. Not for sale in 1949.
- *MARGARET PERRY**. Orange scarlet lined with yellow. July. 4 feet. \$0.25
- *MIDDENDORF**. Orange-yellow flowers. June. 2 feet. \$0.25
- MIGNON** (Stout). This is a multiflora hybrid, tiny flowers with many flowers to the stem. Yellow. Fine for cutting. 3 feet. \$2.50
- MIKADO** (Stout). Rich orange with mahogany red eye. June-August. 3 feet. \$0.50
- MONARCH** (Stout, 1941). Medium size but broad-petalled, light cadmium yellow with delicate halo of fulvous orange in mid-zone. June. 3 feet. \$1.25
- MOONBEAM** (Sass). A very large creamy yellow. Medium large flowers on 5-foot stems. July. \$1.75
- MRS. A. H. AUSTIN** (Betscher). Large flower of deep golden yellow, an especially fine variety. July-August. 3 feet. \$0.50
- OPHIR** (Farr, 1924). A.M., R.H.S. Large broad petals of waxy golden yellow. Early July to mid-August. 4 feet. \$0.75
- PAINTED LADY** (Russell): One of the largest-flowered varieties, full-petalled, wide open blossoms with a beautiful ruffle. A new color, cinnamon brown and yellow on flushed red with a coral throat. July-August. 3 feet. \$8.00
- PARTY GOWN** (Milliken, 1948). A large bicolor, 5½ to 6 inches, which is different. The middle of the wide petals, out to their ends, and the throat, and sepals are lemon yellow. The remaining outer portions of the petals are heavily washed with "mineral" or "Indian red." 42 inches. Stock limited. \$8.00
- PATRICIA** (Stout). A clear and even tone of pale yellow with a greenish throat. A charming full formed flower, fragrant. July. 3 feet. \$0.75
- PETER PUMPKIN** (Nesmith, 1946). A very full cup-shaped flower with broad overlapping petals and sepals that are fluted on the edges. An absolute self of deep orange—many flowers of heavy vellum substance. Midseason. 38 inches. \$6.00

- PINK CHARM** (Nesmith, 1940). Beautiful open flower with very recurving petals and sepals of soft ocher red, giving the effect of a deeply colored coral pink lily. The center of the flower shows a star of light cadmium. August. 38 inches. \$6.00
- PORT** (Stout). A daylily that attracts attention at once because of its bright red flowers, darker in mid-zone, greenish throat. Medium size flowers on 2½-foot scapes. Remains open evenings. July. \$2.00
- RAJAH** (Stout). The throat and background of the flower are a delicate orange with a conspicuous eye of garnet brown. July-August. 42 in. \$0.50
- REGAL LADY** (Nesmith, 1941). A tall and stately rose bicolor of early blooming habit. Large open flowers with deep rose petals blending into a deeper rose bordering the rim of the pale yellow cup. The cream ruffled sepals are faintly flushed with rose, giving the effect of a bicolor. July. 40 inches. \$6.00
- ROSALIND** (Stout selection). This is a variant of the wild Hem. *fulva rosea* which was collected in China. From these collected plants Dr. Stout selected this clear colored rosy pink. The 4.5-inch flowers open wide with petals recurving. July-August. 3 feet. \$2.00
- ROYAL**. Golden yellow flower of fine texture. July. 3 feet. \$0.35
- RUBY SUPREME** (Wheeler, 1940). One of the best of the red Hemerocallis. The large wide open flowers are a luminous ruby red, the throat is green gold. A delicate gold line trails through the middle of each petal. July. 40 inches. \$9.00
- SACHEM** (Stout, 1941). Rich deep red with a throat of yellow orange in sharp contrast to the outer red zone. The color holds well in hot sun. Vigorous. June-July. 40 inches. \$1.50
- SHIRLEY** (Ruys.). Lovely flowers of rich butter yellow. Petal edges are crimped. July-August. 42 inches. \$0.75
- ***SIRIUS** (Yeld). A.M., R.H.S. Waxy bright orange. June-August. 30 in. \$0.25
- SOUDAN** (Stout). Medium large empire-yellow flowers, very full and of recurved lily type, with broad, pleasing creped and crinkled petals and sepals. July-August. 3 feet. \$1.00
- ***SOVEREIGN**. A.M., R.H.S. Medium orange-yellow flower. June. 3 ft. \$0.25
- STALWART** (Cook). A beautiful large blend of tawny reddish bronze and orange, nicely recurved petals. July-August. 40 inches. \$0.50
- STARLIGHT** (Nesmith). A lovely large, broad flower of pinard yellow, with overlapping ruffled segments. July-August. 4 feet. \$6.00
- SUNNY WEST** (Sass). Large flowers of pale canary yellow. Night flowering. July-September. 4 feet. \$0.75
- ***SUNSET** (Perry). Small flowers of crimson copper. July. 3 feet. \$0.25
- SWEET BRIAR** (Nesmith, 1938). A lustrous flower, larger and better in form than *fulva rosea*. The fresh pink petals and sepals are well reflexed, showing a delicate yellow cup. Very charming and lovely. July. 40 inches. \$4.50

- THERON** (Stout, 1934). A dark red purple with great depth of color. The petals and sepals are recurving at the tips with a velvety flush spreading down to the medium yellow cup. July. 34 inches. **\$1.50**
- *THUNBERGI**. Pale yellow, night flowering. August. 3 feet. **\$0.25**
- VALIANT** (Cook, 1943). A massive glowing orange, fine in every way. The large flowers of open, spreading form have wide segments, the inner ones waved and crimped at the margin. Splendid texture and substance. Sun-resistant. July. 42 inches. The finest orange daylily we have seen! **\$7.00**
- VESTA** (Stout, 1930). Deep orange-yellow, lightly flushed with orange-red. The flower glistens in the sun. July. 2 feet. **\$0.50**
- WAU-BUN** (Stout). Soft cadmium yellow with overcast of terra cotta on outer half. June-July. 3 feet. **\$1.00**
- WINONA** (Cook, 1943). Wide open flowers of pale buff-yellow overlaid with the least flush of rusty fulvous. The flower is large, of attractive shape, the segments are broad. Very resistant to sun. July. 42 inches. A good companion to blue flowers. **\$1.25**
- ZOUAVE** (Stout, 1941). Near to a red bicolor. Petals rich fulvous red with darker mid-zone; sepals lighter. Medium size and very well branched. Remains open evenings. June. 42 inches. **\$3.00**

Varieties marked * may be purchased at the rate of 12 plants of any one variety for \$2.00, shipped express collect, only.

Hemerocallis orders under \$3.00 are not prepaid, so must include 35c for shipping charges.

Shipping Time — Early Spring — August, September and October.

Hemerocallis Collection A

Mrs. A. H. Austin
Gold Imperial
Rajah
Stalwart
Sunny West
Vesta

\$3.25 Value for \$2.00

Hemerocallis Collection B

Bountiful
Buckeye
Rosalind
Theron
Winona

\$7.25 Value for \$5.00



—Photo by Cassebeer

Wabash

See Page 15

Sec. 562, P. L. & R.
U. S. POSTAGE
PAID
BLUFFTON, IND.
Permit No. 34

DEPARTMENT OF AGRICULTURE
OFFICIAL BUSINESS

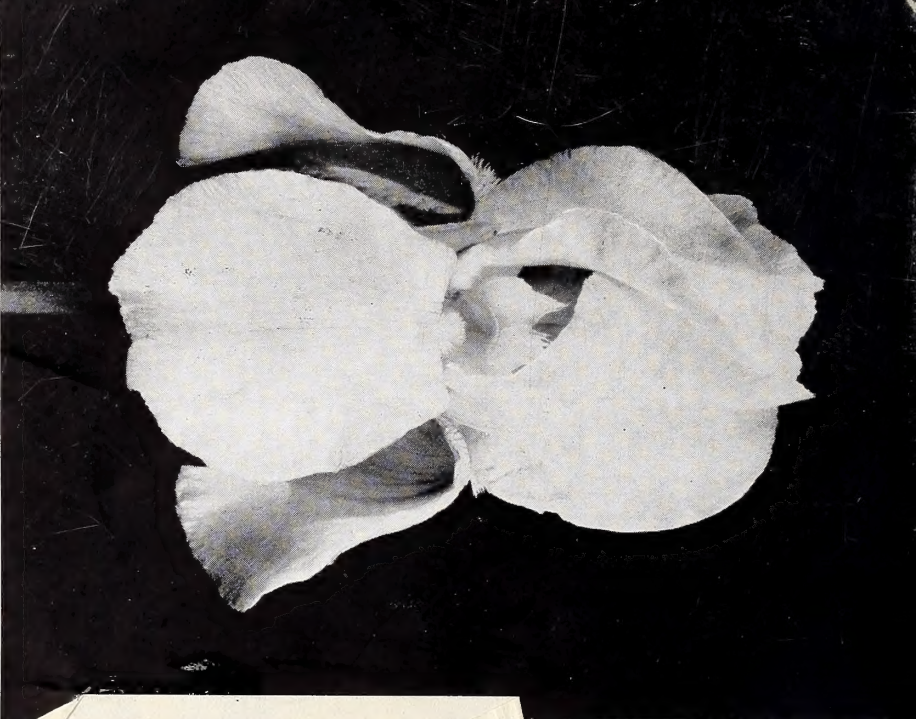
PENALTY FOR PRIVATE USE TO AVOID
PAYMENT OF POSTAGE, \$300

GPO

LIBRARY

U. S. Department of Agriculture

Washington 25, D. C.



WHISTLING SWAN

—Photo by Larmore

LONGFIELD IRIS FARM - Bluffton, Ind.

RETURN POSTAGE GUARANTEED