

DO NOT  
REMOVE  
FROM  
LIBRARY

1953



WILSONIAN

ER  
IS



To a very sweet man <sup>II A.</sup>  
with so sweet a heart  
33 emm, Linaker bush

I have enjoyed being in your  
class. Lots of luck  
The Robinsons

Action speaks louder  
than words.

Ms. Williams  
you are a swell  
English teacher  
H

W. Williams  
You are a very nice  
Daddy





I have enjoyed being  
in your home room  
very much.

To My best <sup>Jack Roney</sup> M A N.

Miss. Davis

I have enjoyed being  
in your English class.

Lots of love,  
Gudy Lipscomb

I have enjoyed  
being in your home-room.

Jackie Bamber

T. Williams

Mr. Williams, you are  
swell English teacher.  
Have enjoyed being  
in your class.  
Gudy Lay

The best of everything  
to a very good teacher.  
J.E.

I have enjoyed  
being in your  
study hall.  
Glendola  
Scott



You're a real swell  
friend as well as a  
teacher and I have  
enjoyed being in  
your classes this  
year. Lots of luck  
in the future!

Rita Steele

Mr. Williams

I have really  
enjoyed being in  
your history class  
we have really  
had fun, best  
of luck always

2 sweet  
2 be Love and prayers  
4 given Virginia Williams

Mr. Williams,

I have enjoyed being  
in your history class this  
year.

I hope your teaching  
career will continue and  
always be a success.

B. Farmer

Mr.

Mr. Williams  
I have enjoyed  
being in your class  
this year. You are  
a good teacher.  
Virginia S.



~~Miss~~

Mr. Williams,  
I have enjoyed being  
in your home room,  
and also English and  
Civics.

Success and happiness  
during your days of  
teaching  
you deserve much

Kay Jones  
11/63

I have certainly enjoyed  
being in <sup>your</sup> history class and  
I want you to know your  
efforts have not been wasted  
because I have learned much.  
You are a very patient man  
with us and that's what it  
takes. Best of luck always to  
one of my best teachers and  
a fine man.  
Elsie Jean Chubb

admiring  
well taught  
teacher

Mr. Williams  
I have enjoyed you  
as my home room  
teacher this. I hope  
that you keep us  
the whole four years  
Mary Marr







*We Present  
The  
Wilsonian  
of  
1953*



"Enter Here"



*Editor-in-Chief*  
CAMILLA ISLEY

*Business Manager*  
JERRY DOSS

If the turning of these pages brings to your memory treasured visions and the sound of happy voices of school mates and teachers, the pleasant sharing of experiences, the spirit of good sports, the creation of ideals and inspirations — We shall feel the efforts put forth by the Staff amply rewarded.

*Published by*  
**The Students of**  
**ALEXANDER WILSON HIGH SCHOOL**

GRAHAM, NORTH CAROLINA  
*Volume IV*



# *Dedication*



GEORGE BRANSON ROBBINS

As an expression of our love and gratitude to one whose friendly interest, sympathetic understanding, lofty ideals, loyal service, and helpful guidance, have inspired boys and girls to higher goals in life, we, the seniors of Alexander Wilson High School, sincerely dedicate the 1953 WILSONIAN to our Principal, Mr. George Branson Robbins.





A

*Administration*





HENRY A. SCOTT  
Chairman  
County Board of Education

DR. MARVIN E. YOUNT  
Superintendent  
Alamance County Schools

## *Our School Board*



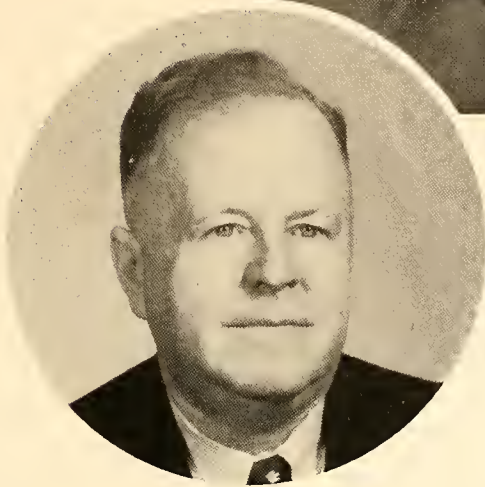
Seated, left to right: Theodore R. Crawford, Ernest P. Webster, Sr., Woodrow W. Lambeth, Chairman; Arthur W. Holmes, Sr., James Alfred Crabtree.



# Our Faculty



As They Plan



GEORGE B. ROBBINS  
M.A.  
*Principal*

RUFUS H. ABERNATHY  
A.B.  
*Science*

MRS. SEAWELL W. BURKE  
A.B.  
*Social Studies, French*

SAMUEL A. COOPER, SR.  
B.S.  
*Agriculture*

MISS ELOISE DAVIS  
A.B.  
*English, Library*

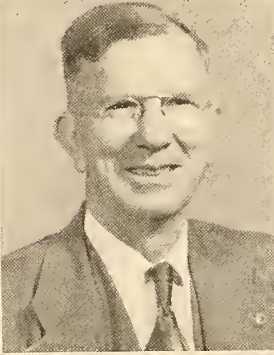
MISS ELIZABETH HOFFMAN  
A.B.  
*Music*

MRS. JAMES M. RICH  
B.S.  
*Home Economics*

MRS. GEORGE B. ROBBINS  
A.B.  
*Mathematics, Health*

MRS. ROBERT W. SCOTT  
B.S.S.A.  
*Commercial*

THOMAS M. WILLIAMS  
A.B.  
*Social Studies, English*







HENRY A. SCOTT  
Chairman  
*County Board of Education*

DR. MARVIN E. YOUNT  
Superintendent  
*Alamance County Schools*

## *Our School Board*



Seated, left to right: Theodore R. Crawford, Ernest P. Webster, Sr., Woodrow W. Lambeth, Chairman; Arthur W. Holmes, Sr., James Alfred Crabtree.



# Our Faculty



As They Plan



GEORGE B. ROBBINS  
M.A.  
Principal

RUFUS H. ABERNATHY  
A.B.  
Science

MRS. SEAWELL W. BURKE  
A.B.  
Social Studies, French

SAMUEL A. COOPER, SR.  
B.S.  
Agriculture

MISS ELOISE DAVIS  
A.B.  
English, Library

MISS ELIZABETH HOFFMAN  
A.B.  
Music

MRS. JAMES M. RICH  
B.S.  
Home Economics

MRS. GEORGE B. ROBBINS  
A.B.  
Mathematics, Health

MRS. ROBERT W. SCOTT  
B.S.S.A.  
Commercial

THOMAS M. WILLIAMS  
A.B.  
Social Studies, English







*"Miss Alexander Wilson 1953"*  
PATSY MARIE HOLT

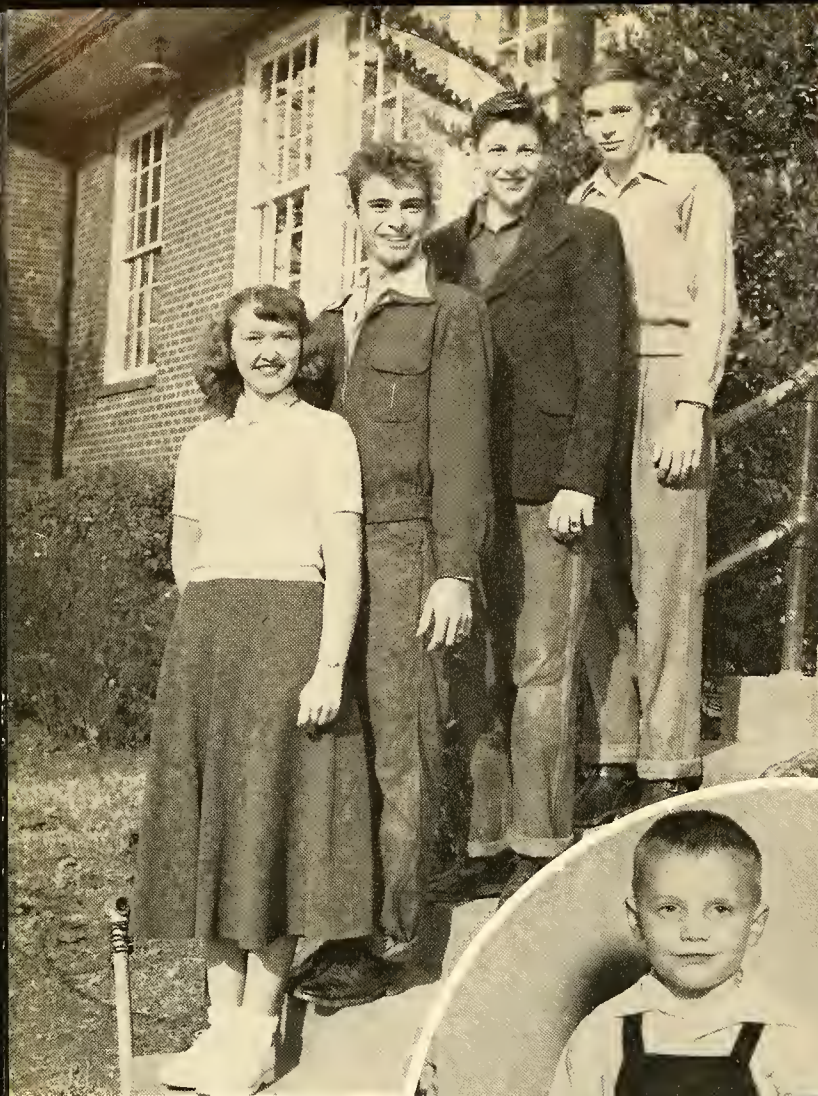




*lasses*

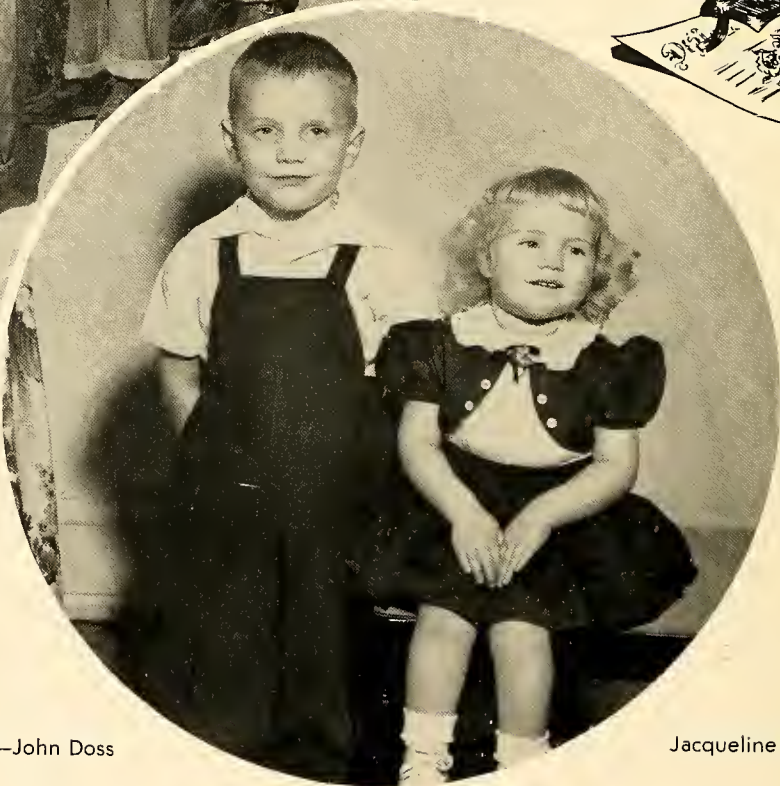
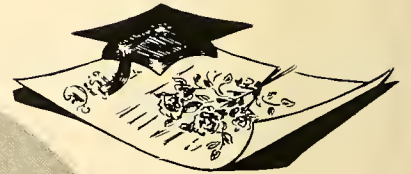






HOLT, LOY, LAWRENCE,  
THOMPSON

# Seniors



MASCOTS—John Doss

Jacqueline Bailey

## Class Officers

- CARROLL BURKE LOY ..... President  
 BOBBY JAMES LAWRENCE ..... Vice President  
 PATSY MARIE HOLT ..... Secretary  
 BOBBY HUNTER THOMPSON ..... Treasurer

Motto—"Happiness our aim; Success our goal."

COLORS—Blue and Silver

FLOWER—White Carnation





PEGGY CAROLYN ABERNATHY

"Abbey"

*"Sweet, efficient, sincere; she's a good sport too, we hear."*

Dramatics 1; Glee Club 3; Basketball 3, 4, Co-Captain; Cheerleader 2; FHA Club 1, 2, 3, Historian 4, Parliamentarian, State President; Monogram Club 2, 3, 4, Secretary and Treasurer; Marshal 2; "Miss Alexander Wilson" 3; Wilsonian Staff 3; Hootin' Owl Staff 4; Most Athletic; Winner Elon College Scholarship.



CLARA JANE ALBRIGHT

"Susie"

*"She looks as clean as morning roses, newly washed in dew."*

Glee Club 3, 4; FHA 1, 2, 3, 4, President; 4-H Club 2; Softball 1, 2, 4; FHA Queen 4; Best Dressed.

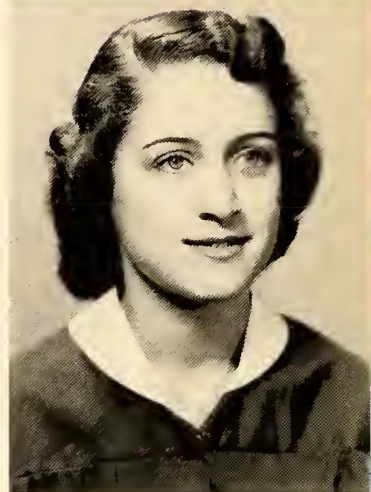


REBA HAYES ATKINSON

"Munk"

*"It doesn't pay to worry; things are bound to happen anyway."*

Basketball 4, Manager; Glee Club 4; Wilsonian Staff 4, Sports Editor.



RUTH ELIZABETH CAPPS

"Ruthie"

*"Thou who has the fatal gift of beauty."*

FHA 1, 2, 3, 4; Glee Club 3; Dramatics 1; Cheerleader 3, 4, Chief; Monogram Club 3, 4; Softball 1, 2, 3.



JANET NAOMI CAPPS

"Bo"

*"Popularity is power."*

Class Treasurer 1; Class Secretary 2; Council Representative 3, 4; FHA Club 1, 4; 4-H Club 1; Monogram Club 3, 4; Dramatics 2; Hootin' Owl Staff 4; Wilsonian Staff 4; Marshal 3; Giftorian; Most Popular.

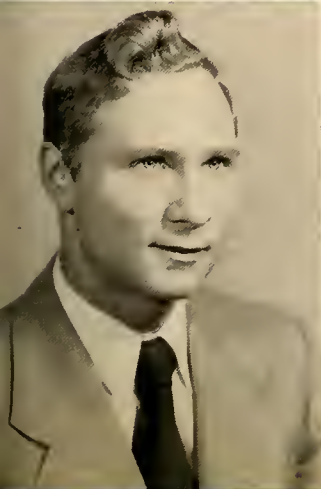


SHIRLEY BLANCHE CARDEN

"Smutty"

*"Whose heart is like a mountain; whose thoughts like merry rivers sing."*

4-H Club 1, 2, 3; Softball 1, 2, 3; Glee Club 3, 4.

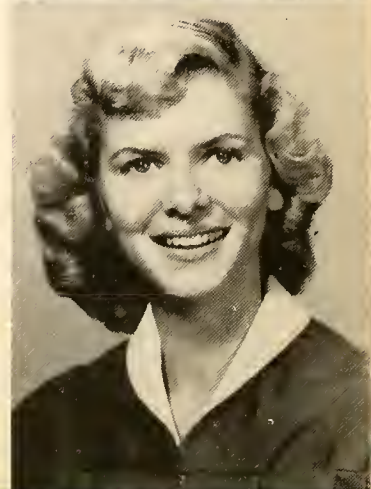


JAMES GREENE CARSON

"Hot Rod"

*"Music has charms to soothe the savage breast."*

Most Talented



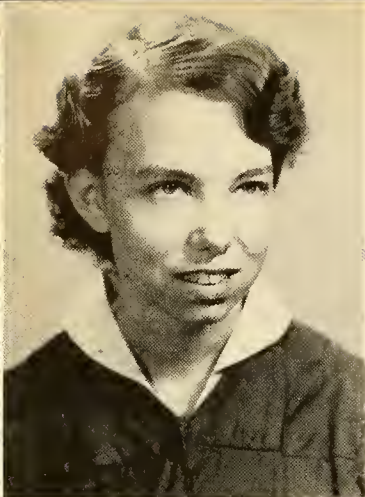
BILLIE JUNE COBLE

"Bill"

*"I chatter, chatter, as I go."*

Class Secretary 1, 2; Dramatics 2; Cheerleader 3, 4, Monogram Club 3, 4; Wilsonian Staff 3; Hootin' Owl Staff 4; Class Testator; Cutest.





PATSY O'NEIL COBLE

"Pat"

*"Silent, but none the less effective."*

Glee Club 3, 4.

MARGARET ANN COVINGTON

"Peggy"

*"Talking is more or less a consumption of energy."*

FHA 1, 2, 3, 4, Vice President; Glee Club 3; Wilsonian Staff 4, Snap Shot Editor.



NANCY GAIL DIXON

"Dale"

*"Work is honorable; perseverance wins."*

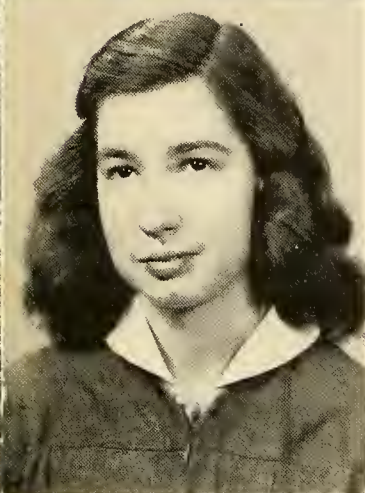
Elementary Librarian 3; Hootin' Owl Staff 4; Wilsonian Staff 4; Most Intellectual.

NANCY CHRISTINE DODSON

"Chatter Box"

*"A merry heart goes all the day."*

4-H Club 1, 2; Glee Club 3.



JERRY DELANO DOSS

"Jerry"

*"He's a mean, love-makin', heart breakin' man."*

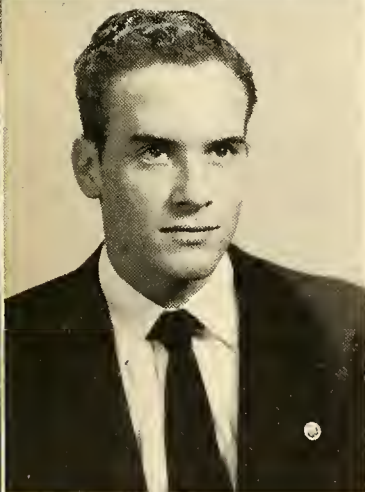
Basketball 1; 4-H Club 1, 2; Council Representative 4, Vice President; Football 2, 3, 4, Co-Captain; Monogram Club 2, 3, 4; Bus Drivers' Club 2, 3, 4; FFA Club 1, 2, 3, 4; Parliamentary Procedure Team 1, 2, 3, 4, President; County FFA Federation 2, Vice President, 3; Secretary, 4, President; Wilsonian Staff 4; County Council Representative 4, Vice President; Most Popular; Best Looking.

MARY JANET FRAZIER

"Baby Doll"

*"The best things come in small packages."*

4-H Club 1, 2; Glee Club 3, 4.



JERRY CECIL HOLT

"Snowman"

*"Athletic, witty, and full of fun; he's made a friend of everyone."*

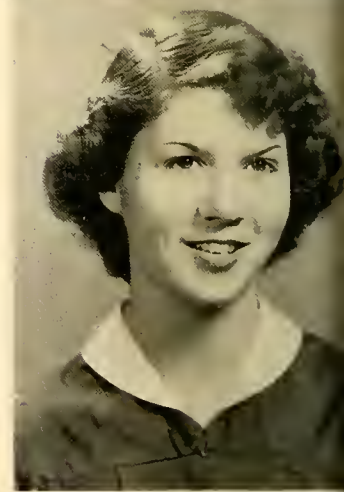
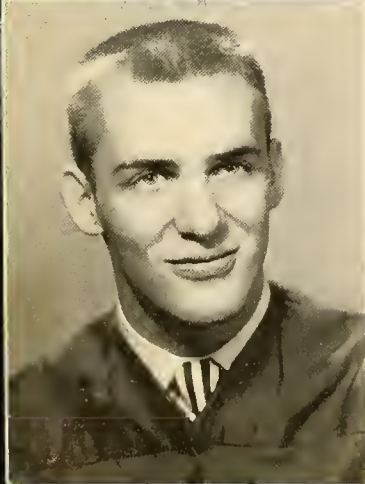
Class President 1; Dramatics 1; Monogram Club 1, 2, Vice President 3, 4; Football 1, 2, 3, Cop-Captain, 4, Captain; Baseball 2, 3, 4; Basketball 3, 4; Wilsonian Staff 3, 4; Hootin' Owl Staff 4; Most Outstanding Athlete 3; Class Prophet; Most Athletic; Best All-Round.

PATSY MARIE HOLT

"Pat"

*"The one worthwhile is the one who can smile when everything seems to go wrong."*

FHA Club 1; Class Vice President 2; Class Secretary 3, 4; Hootin' Owl Staff 4; Historian; Best All-Round; Most Friendly; "Miss Alexander Wilson" 1953.







PATSY JOSEPHINE HUNTER

"Pat"

*"A loyal companion, an excellent friend, an earnest worker, and loyal to the end."*

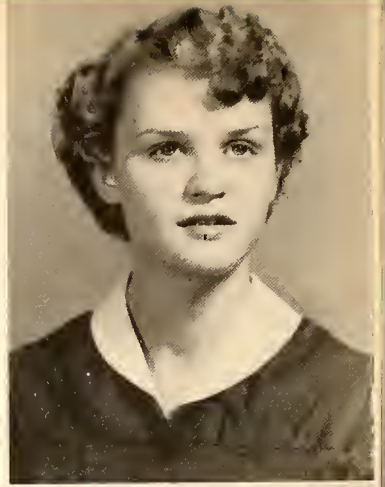
FHA Club 1, 2, 3, 4; Glee Club 3; Marshal 3; Hootin' Owl Staff 4; Wilsonian Staff 4; Statistician; Most Likely to Succeed.

MARY CAMILLA ISLEY

"Camilla"

*"To know her is to love her; to name her is to praise her."*

Dramatics 3; Marshal 2, 3, Chief; Wilsonian Staff 3, 4; Class Poet; Most Talented.



NANCY GWEN ISLEY

"Freckles"

*"How can I study with love affairs on my mind?"*

4-H Club 1; FHA Club 1; Cheerleader 2, 4; Monogram Club 2, 3, 4; Basketball 3, 4; Softball 3, 4.

SHIRLEY JEAN JOHNSON

"Shirley"

*"Modesi, simple, and true."*

Glee Club 3; FHA Club 1.



BETTY JEAN JONES

"Bruno"

*"Play well the game and know the limit, and still get all the fun there's in it."*

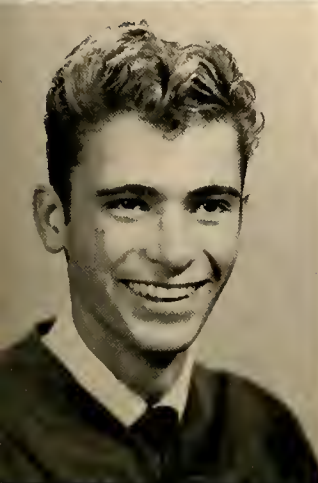
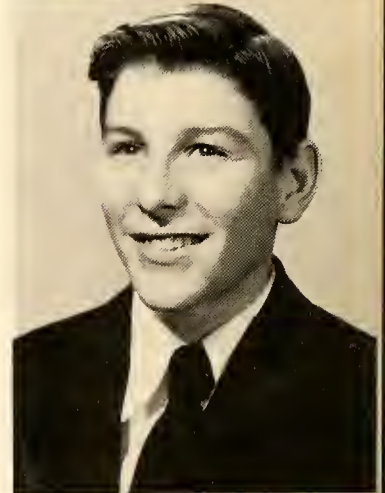
FHA Club 1, 2; 4-H Club 1, 2; Class Treasurer 2; Softball 2; Monogram Club 2, 3, 4; Basketball 3, 4; Cheerleader 2; Glee Club 3, Vice President, 4, President.

BOBBY JAMES LAWRENCE

"Booby"

*"His duties well prepared; his days well spent."*

Basketball 1, 2, 3, 4; Marshal 2; Monogram Club 2, 3, 4; Class Treasurer 2, 3; Class Vice President 4; FFA Club 4; Football 4; Baseball 3, 4; Hootin' Owl Staff 4; Wilsonian Staff 4; Cutest; Most Friendly.



CARROLL BURKE LOY

"Burkie"

*"Give me a coin and I will show you wonders."*

Council Representative 1, 2; Cheerleader 2; Monogram Club 2; Class President 3, 4; Dramatics 3; Hootin' Owl Staff 4; Bus Drivers' Club 3, 4; Most Dignified; Best Dressed.

JOSEPHINE JEANETTE MANGUM

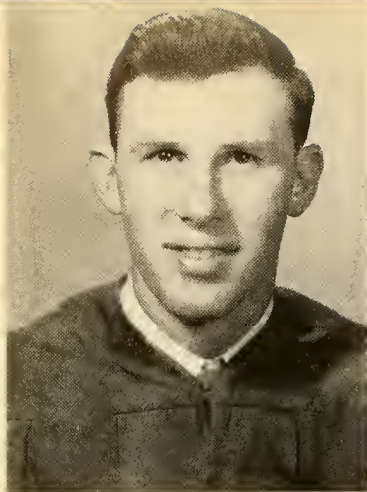
"Shorty"

*"Little, but Oh My!"*

Softball 1; FHA Club 1, 2; 4-H Club 1, 2; Glee Club 3, 4.







BEN JEROME MARTIN, JR.

"Cobb"

*"Yep, I'm a Senior this year."*

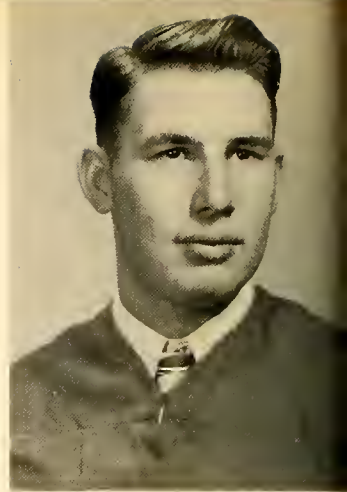
4-H Club 1, 2, 3, 4, Vice President; Basketball 2, 3; FFA Club 1, 2, 3, 4, Treasurer; Bus Drivers' Club 2, 3, 4.

DONALD HUGH MARTIN

"Don"

*"Not too serious, not too gay, but altogether a jolly, good fellow."*

4-H Club 1, 2, 3, 4; FFA Club 1, 2, 3, 4, Secretary; Parliamentary Procedure Team 3, 4, Secretary; Bus Drivers' Club 3, 4.



LUCILLE MAXINE MARTIN

"Mack"

*"I'll be merry and free; I'll be sad for nobody."*

Hootin' Owl Staff 4.

PEGGY TINGEN MASSEY

"Lou"

*"Rare compound of quality, noble and true, plenty of wit and good sense, too."*

Class Secretary 1; FHA Club 1; Marshal 3.



JANE AVA MCPHERSON

"Dumpy"

*"I love to live, whether I smile or grieve."*

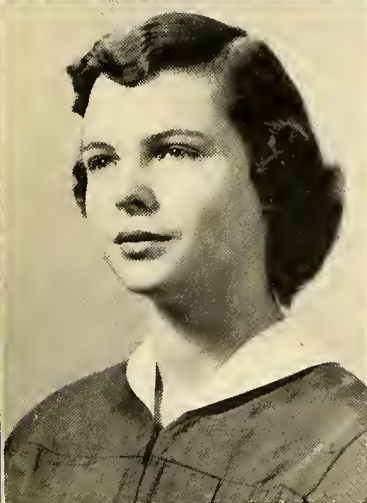
FHA Club 1, 2, 3; Softball 3; Glee Club 3, 4.

JULIA FRESHWATER MCVEY

"Julie"

*"I say what I mean, and I know what I think."*

Hootin' Owl Staff 4; Most Mischievous.



BASCOM WALKER MOORE

"Luke"

*"I believe in taking life easy."*

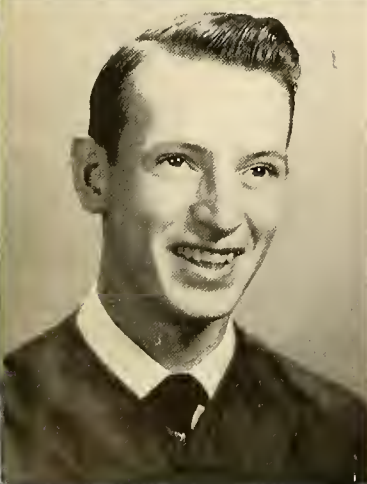
4-H Club 1, 2, 3, President 4; FFA Club 1, 2, 3, 4; Parliamentary Procedure Team 3, 4, Reporter; Basketball 2, 3.

ELIZABETH OGRETA MULLINS

"Liz"

*"Divinely tall, and most divinely fair."*

Council Representative 1, 2; Basketball 1, 2, 3, 4; Glee Club 3; Monogram Club 2, 3, 4; Most Dignified.







PATRICIA JO ANNE OWEN

"Jo"

"A smile is the same in all languages."

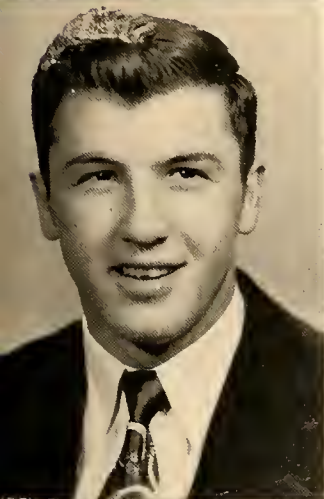
4-H Club 1; Glee Club 3, 4.

CAROLYNE LORETTA PARRISH

"Carol"

"Quiet, reserved and demure; a friend upon whom you are always sure."

Class Vice President 1; Glee Club 3; Wilsonian Staff 4.



GORDON SCOTT PENDERGRAPH

"Zero"

"Take life too seriously, and what is it worth?"

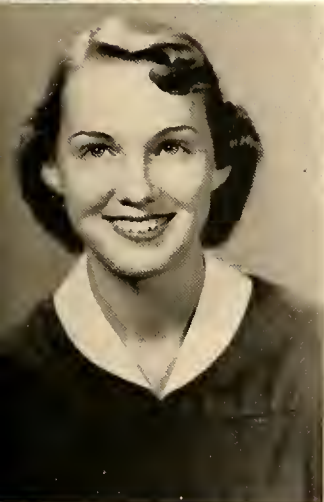
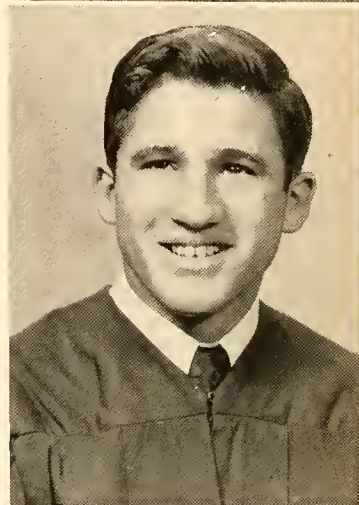
FFA Club 1, 2, 3, 4; Monogram Club 1, 2, 3, 4, President; Football 1, 2, 3, 4; Baseball 1, 2, 3, 4; Basketball 2, 3, 4, Co-Captain; Parliamentary Procedure Team 3, Treasurer, 4, Vice President.

HERMAN FRANKLIN PENDERGRAPH

"Herman"

"Happy I am; from care I'm free; why aren't all contented like me?"

FFA Club 1, 2, 3, 4, Reporter; Basketball 3, 4; Baseball 3, 4; Football 4; Monogram Club 4; Most Mischievous.



PEGGY JEAN RAY

"Peg"

"She needs no eulogy; she speaks for herself."

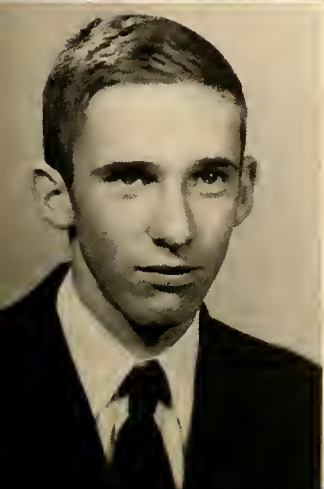
FHA Club 1, 2, Songleader 3, Secretary, 4, Historian; Class President 2; Cheerleader 3; Glee Club 3; Council Representative 3, 4, President; County Council Representative 4; Miss Football of 1950, 2; Monogram Club 3, 4; Hootin' Owl Staff 4.

SARAH FRANCES SMITH

"Flossie"

"The bright idea struck him—to get married."

Glee Club 3, 4.



BOBBY HUNTER THOMPSON

"Negro Bob"

"The world's no better if we worry; life's no longer if we hurry."

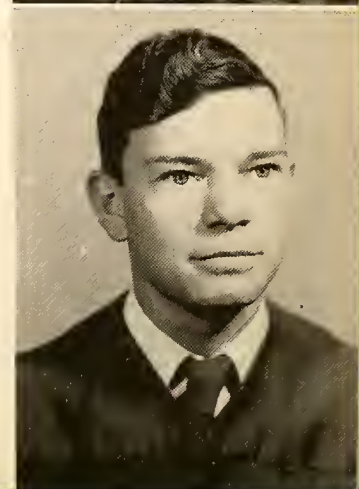
Class Treasurer 4; Class Vice President 1, 2; Council Representative 3; Most Intellectual; Most Likely to Succeed.

GLENN EDWARD THOMPSON

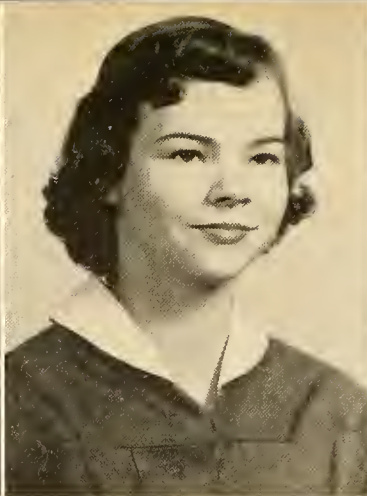
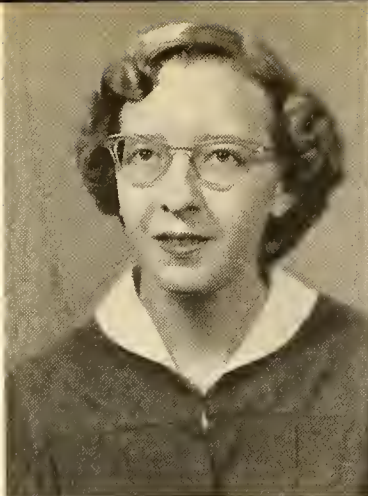
"Glenn"

"True to his word, his work, and his friends."

FFA Club 1, 2, 3, Vice President; Hootin' Owl Staff 4; Bus Drivers' Club 3, 4.







JEAN ROGERS THOMPSON  
"Jeanie"

*"Fair and gentle, good and true,  
dignified and dependable too."*

FHA Club 1, 2, 3; Softball 3; Glee  
Club 3, 4; Wilsonian Staff 4, Typist;  
Hootin' Owl Staff 4, Proofreader.

PEGGY VIRGINIA WAGONER  
"Peg"

*"Not married, but willing to be."*

Glee Club 1.

CAROLYN KOWINA WEBSTER  
"Cathy"

*"When hearts are true, few words  
will do."*

Glee Club 3; FHA Club 1.

## SENIOR CLASS POEM

Our last four years at Wilson High have been  
*highways of time.*

*Each year has been a different road, each task a  
hill to climb.*

*The freshman road was very new and paved with  
bewilderment;*

*We laughed and sang, and suddenly, the first year  
had been spent.*

*Next, we traveled the sophomore road, where the  
flowers of knowledge grew;*

*Sometimes we left our merry way to look and pick  
a few.*

*As down the junior road we went, so carefree,  
happy and gay,*

*We studied some, played much more, and left  
work for another day.*

*Now we're seniors on the roads once long, but  
now so short instead,*

*We've passed the half-way mark, and look, the  
road is forked ahead.*

*There we see the highway signs pointing like  
fingers of fate,*

*And each must ask himself this question, which  
road shall I take?*

*Day by day and step by step, our high school roads  
are ending,*

*And as we leave these treasured streets, this mes-  
sage we are sending:*

*Dear School, "There's none can take your place,  
For you leave a memory that time cannot erase."*

CAMILLA ISLEY  
Poet





# Senior History

It was a crisp, September morning in 1949 when we sixty-seven wide-awake freshmen entered the portals of Alexander Wilson High School to begin another mile of our journey.

Since our class was very large, the group was divided into two sections; section I, which was under Mr. Abernathy and section A, under Miss Teague. The first thing of importance was the election of officers. Mr. Abernathy's group chose the following: Jerry Holt, president; Carolyne Parrish, vice president; Billie June Coble, secretary; and Vernell Ashley, treasurer. Miss Teague's group chose these members to lead their class: Bill King, president; Bobby Thompson, vice president; Peggy Tingen, secretary; and Janet Capps, treasurer.

During our first year in high school, we, as freshmen, enjoyed many interesting and exciting activities, but vacation time soon rolled around and our summer months were filled with various events.

As September rushed upon us, we found ourselves beneath the portals of our beloved school. Again this year, however, Mrs. Fisher was adviser of section I, while Mr. Abernathy had section A.

Mr. Abernathy's section elected the following as their class officers: Peggy Ray, president; Patsy Holt, vice president; Billie June Coble, secretary; and Bobby Lawrence, treasurer. Mrs. Fisher's section elected these as their leaders: Charlotte Leonard, president; Bobby Thompson, vice president; Janet Capps, secretary; and Betty Jones, treasurer.

It became necessary for Mrs. Fisher to join her husband in Asheville; so Colonel Edwards succeeded her as adviser to section I.

By the time we were sophomores, we had learned the schedule of our daily work and were kept very busy, we thought. We finished the year, but lost a few classmates.

Our junior year began with a total of forty-eight members who were united as one group with Mrs. Robbins as adviser. The first big job was the selection of leaders. After much thought, these were our choice: Burke Loy, president; Charlotte Leonard, vice president; Patsy Holt, secretary; and Bobby Lawrence, treasurer.

The junior year was a very important one for us, because we were allowed to participate in more activities. This really pleased us and fed our ego. Next we had the duty of selecting our marshals, who were Camilla Isley, chief; Patsy Jo Hunter, Peggy Tingen, and Janet Capps.

Soon came the time for us to select our class rings; this occasion was one of our happiest high school experiences. Before we knew it, we were faced with the preparation of the Junior-Senior Banquet, the theme of which was "Singing in the Rain." This gala event was held at Alamance Hotel where we had a wonderful time.

Vacation time soon rolled around, and again we were happy and carefree boys and girls.

Our senior year began with a "bang," and everyone was eager and willing to work hard, for our goal was well in sight. The following officers were chosen: Burke Loy, president; Bobby Lawrence, vice president; Patsy Holt, secretary; and Bobby Thompson, treasurer.

Peggy Ray was elected by the student body to serve as president of the Good Citizenship Council.

During our senior year there were many important offices to be filled. In October we elected the Hootin' Owl Staff. Next was the selection of our superlatives, then we chose our mascots, Jacqueline Bailey and John Doss. Soon our annual staff was chosen.

As the last lap of our journey draws nearer, we rejoice that obstacles have been overcome and our goal—graduation—is no longer a dream.

PATSY HOLT  
*Historian*





# Prophecy

After a hard day's practice with the New York Yankees, I went to my apartment, which I shared with my two teammates. I had been home only a few minutes, when I had a surprise visit from Burke Loy, a classmate of mine, now a famous Hollywood celebrity. After getting comfortably seated, we started our conversation. One by one we talked about our classmates.

We recalled that Julia Freshwater, Jean Rogers, and Peggy Tingen, who married before they graduated, are now rearing their families.

Soon after graduation Clara Albright and Walker Moore married, and now own a big dairy farm near Graham, which in addition to their young son, Walker, Jr. keeps them busy.

Carolyne Parish and Glenn Thompson married soon after graduation and moved to Texas, where they fell heirs to an oil well, thus making them very wealthy.

Ruth Capps, a private secretary for a big business man, who recently became wealthy, is now her boss's wife.

After a year of beauty culture, Peggy Ray, owner and operator of "Queen's Beauty Shoppe," married Bill Turner, who now manages the A&P Store in Graham.

Frances Smith, Carolyn Webster, and Shirley Carden, married soon after graduation, are very successful housewives.

Jimmy Carson, the most talented boy in the class of '53, has become a famous band leader, and his wife, the former Peggy Wagoner, probably has plenty of headaches caused by her husband's practice.

From the class of '53 have come a few outstanding businesswomen, who are Reba Atkinson, the first woman to become a manager of a Roses' 5, 10, and 25c Store; Jane McPherson, owner of Jane's Smart Shoppe, in Burlington; Peggy Covington, a well-known dress designer. All of these have been very successful in their fields.

Camilla Isley, who finally worked her way to success as an actress, is now the leading lady on a television show; Billie June Coble is a struggling

comedienne on television; Nancy Isley is one of the most popular Powell Models in New York; and the singing rage of the year is Jeanette Mangum.

Three of the best typing students of our class, Shirley Johnson, Nancy Dodson, and Patsy Coble, are now successful secretaries.

Patsy Jo Hunter is a medical secretary, at Alamance County Hospital, in Burlington.

Ben and Don Martin, who now own Martin Brothers' Dairy in Alamance County, are the leading dairymen of North Carolina.

Herman Pendergraph operates a garage in Graham, where he has a booming business, while his cousin, Scott Pendergraph, is one of the most popular news commentators in the United States.

The teaching profession has not been ignored by the class of '53, because Jerry Doss is the agriculture teacher at Alexander Wilson; Patsy Holt teaches the first grade at the Methodist Orphanage in Thomasville; Maxine Martin is the typing teacher at Burlington Business College; and Gail Dixon, who in her spare time writes books, is head of the English Department at Elon College.

Jo Anne Owen and Janet Frazier, partners in a children's nursery, have one of the largest and most modern nurseries in North Carolina.

Bobby Thompson is rapidly becoming one of the biggest politicians in the South. Many people think he'll be president some day.

After a long hard struggle, Bobby Lawrence is now head of the Advertising Department of Burlington Mills, Inc.

Several members of the class entering the field of medicine are: Elizabeth Mullins, now a prominent doctor; Janet Capps, head nurse at Watts Hospital in Durham; Betty Jones, one of the best surgical nurses in North Carolina; and Carolyn Abernathy, an X-ray technician at Memorial Hospital in Charlotte.

My classmate and I had talked and talked until we were really weary, so we decided to get some rest and finish our discussion at a later date—probably in 1963.

JERRY HOLT  
Prophet



# Last Will and Testament

Graham, North Carolina, Alamance County:

We the Senior Class of 1953, of Alexander Wilson High School, in the above said State and County; being of sound mind and having a high standard of character, do hereby make and ordain this our last will and testament.

Article I: To our beloved principal we wish to express our deepest gratitude for the innumerable things that he has done for us.

Article II: To the Faculty we leave our sincere thanks for the help and understanding that they have given us.

Article III: To the juniors we leave all the fun that goes with being a senior.

Article IV: To the sophomores we leave our hopes that before long they will occupy the positions that we now hold.

Article V: To the freshmen we leave our poise and dignity.

Article VI: Certain individuals do bequeath as follows.

I, Carolyn Abernathy . . . my position of Co-Captain of the basketball team to Barbara Mills.

I, Clara Albright . . . my good luck to have a car of my own to Emily Tapp.

I, Reba Atkinson . . . my job at "Roses" to Mabelene Riddle.

I, Janet Capps . . . my popularity to Dorcus Wood.

I, Ruth Capps . . . my good looks to be divided among the freshmen.

I, Shirley Carden . . . my dimples to Doug Sawyer.

I, Jimmy Carson . . . my ability to play the drums to John Tingen.

I, Bille June Coble . . . my peroxided hair to my little sister, Dianna.

I, Patsy Coble . . . my quiet manner to Herman Crawford.

I, Peggy Covington . . . my French book to anyone crazy enough to take it.

I, Gail Dixon . . . my position as Editor of the Hootin' Owl to Martha Sue Roberson.

I, Nancy Dodson . . . my worries and troubles over bookkeeping to Mary Cates.

I, Jerry Doss . . . my ability to make all the girls fall for me to Larry Joe Isley.

I, Janet Frazier . . . my smallness to Judy Lipscomb.

I, Jerry Holt . . . my athletic ability to Jimmy Clark.

I, Patsy Holt . . . my friendliness to Virginia Williams.

I, Patsy Jo Hunter . . . my ability to make good grades to Mack Davis.

I, Camilla Isley . . . my artistic ability to Nancy Dillard.

I, Nancy Isley . . . my talkativeness to Linda Long.

I, Shirley Johnson . . . my laugh to Billy Petty.

I, Betty Jones . . . my ability to have a good time to Carl Church.

I, Bobby Lawrence . . . my cuteness to Kenneth Dilks.

I, Burke Loy . . . my dancing ability to Ben Farmer.

I, Jeanette Mangum . . . my shortness to Dina Crenshaw.

I, Maxine Martin . . . my job as typist for the school paper to Vernell Ashley.

I, Don Martin . . . my farming ability to Jerry Foster.

I, Ben Martin . . . leave! he hopes.

I, Peggy Massey . . . my ability to catch a man to Kay Jones.

I, Jane McPherson . . . my ability to blush to Shirley Williams.

I, Julia McVey . . . my old boy friends to O'Dean Riley.

I, Walker Moore . . . leave, and if I leave anything worthwhile, it is to be divided among the juniors.

I, Elizabeth Mullins . . . my dignified ways to Janet Gray.

I, Jo Ann Owen . . . my sweet disposition to Glenda Lee Scott.

I, Carolyne Parrish . . . my sweet voice to George Bason.

I, Herman Pendergraph . . . my mischievous ways to Louise Cooper.

I, Scott Pendergraph . . . my football suit to Bobby Teer.

I, Peggy Ray . . . my position as President of the Good Citizenship Council to Mary Jane Fenton.

I, Frances Smith . . . my ability to laugh at nothing to Kent Mann.

I, Glenn Thompson . . . my ability to get to school on time to Mack Payne.

I, Jean Thompson . . . my ability to get married to Nellie Tingen.

I, Bobby Thompson . . . my ability to take life easy to Bill Guthrie.

I, Peggy Wagoner . . . my 'natural' curly hair to Virginia Carden.

I, Carolyn Webster . . . my desire to get out of high school to Buddy Isley.

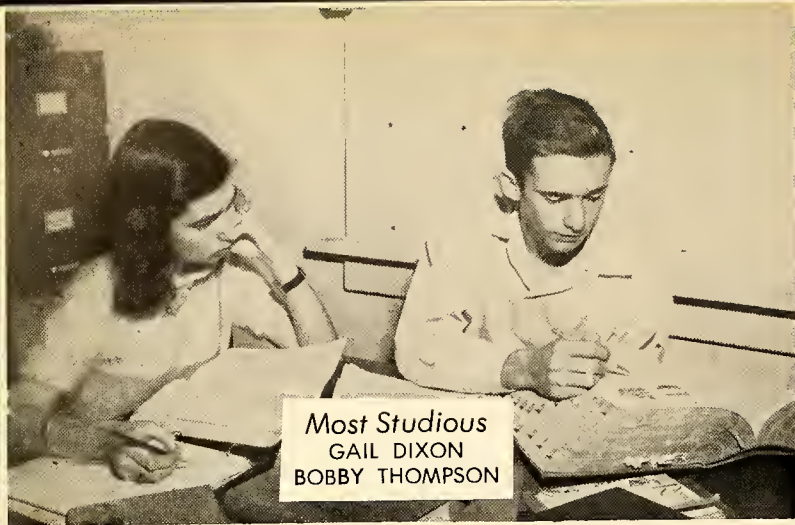
We do hereby subscribe our names and affix our seal this the eighteenth day of January, in the year of our Lord, one thousand nine hundred and fifty three.

Witnesses:

Carolyne Parrish  
Glenn Thompson  
Camilla Isley

Class of '53  
Billie June Coble  
Testator





**Most Studious**  
GAIL DIXON  
BOBBY THOMPSON



**Best All-round**  
PATSY HOLT  
JERRY HOLT



**Best Looking**  
RUTH CAPPS  
JERRY DOSS

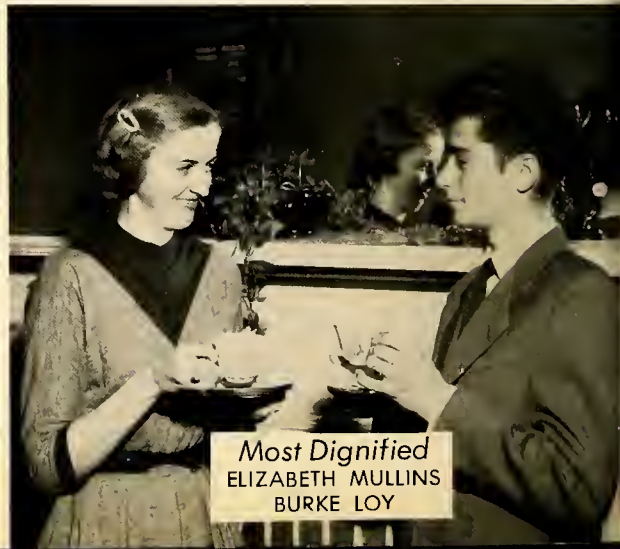


**Cutest**  
BOBBY LAWRENCE  
BILLIE JUNE COBLE

# Top Ranking



**Most Athletic**  
CAROLYN ABERNATHY  
JERRY HOLT



**Most Dignified**  
ELIZABETH MULLINS  
BURKE LOY





**Best Dressed**  
CLARA ALBRIGHT  
BURKE LOY



**Most Mischievous**  
JULIA McVEY  
HERMAN PENDERGRAPH

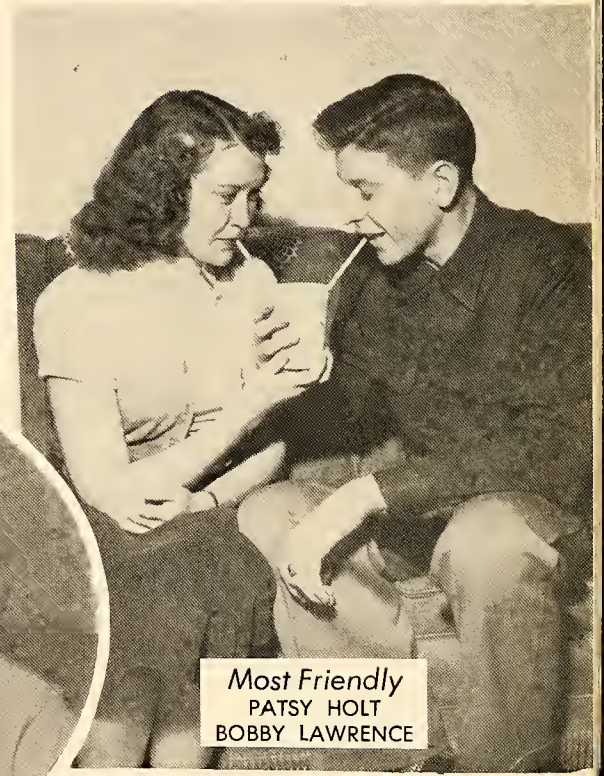
# Seniors



**Most Popular**  
JERRY DOSS



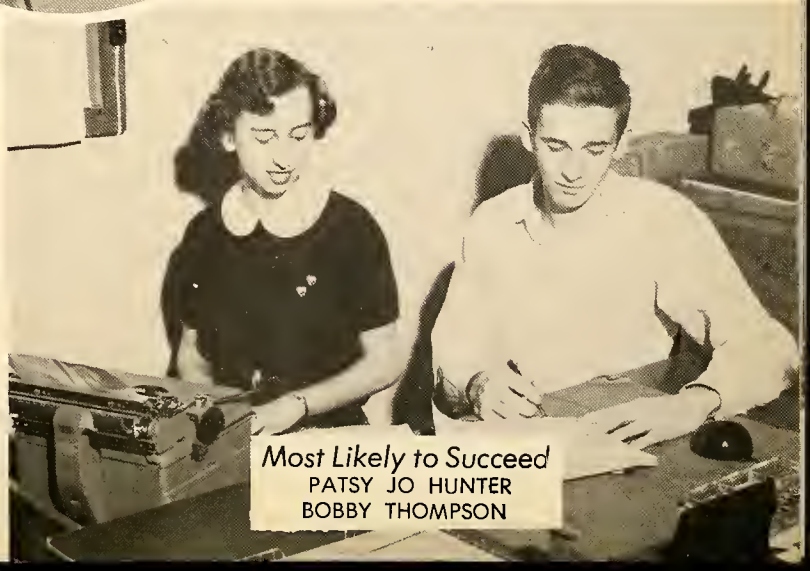
**Most Popular**  
JANET CAPPS



**Most Friendly**  
PATSY HOLT  
BOBBY LAWRENCE



**Most Talented**  
CAMILLA ISLEY  
JIMMY CARSON



**Most Likely to Succeed**  
PATSY JO HUNTER  
BOBBY THOMPSON





Not All Jollity

J  
u  
n  
i  
o  
r  
s



Farmer  
Dillard

Curtis  
Fenton



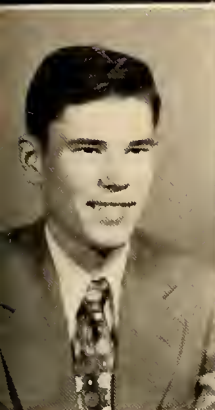
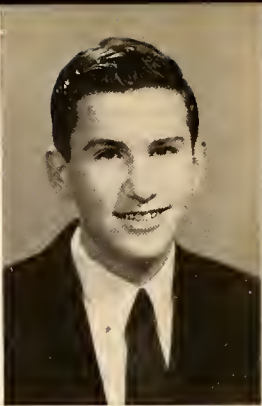
CLASS OFFICERS

- BEN DAVIS FARMER ..... *President*
- NANCY ALVA DILLARD ..... *Vice President*
- MARY JANE FENTON ..... *Secretary*
- HAROLD PICKETT CURTIS ..... *Treasurer*





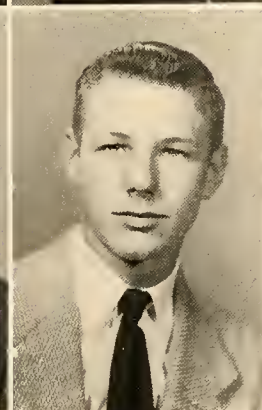
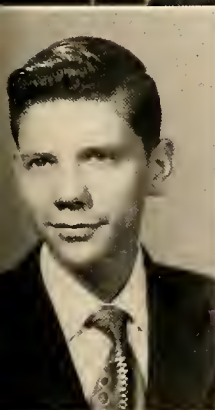
Charles Colon Albright  
 Vernell Vestal Ashley  
 Betty Jean Bishop  
 Harry William Brady



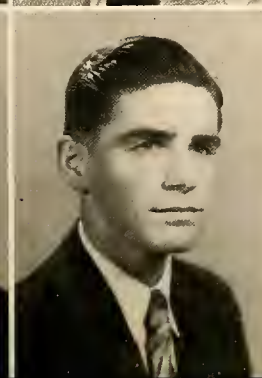
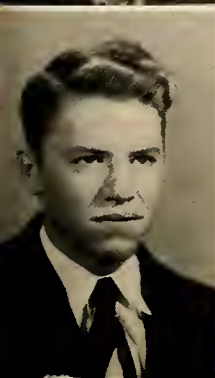
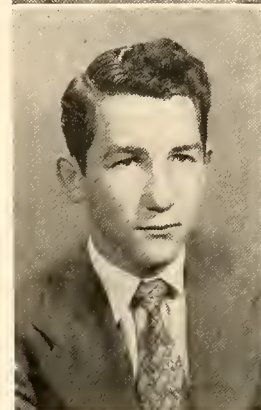
Jerry Ronald Brooks  
 Rebecca Ann Brown  
 Shirley Faye Brown  
 Elsie Jean Church



Ronald Talmadge Clapp  
 Austine Cook  
 Barbara Jean Crawford  
 Dina Lee Crenshaw



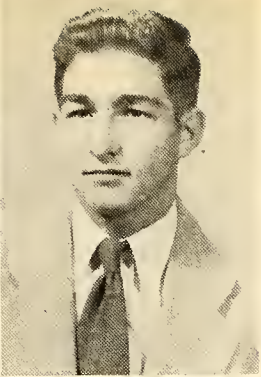
Thomas Glenn Crutchfield  
 Harold Pickett Curtis  
 Mack Dean Davis  
 Nancy Alva Dillard



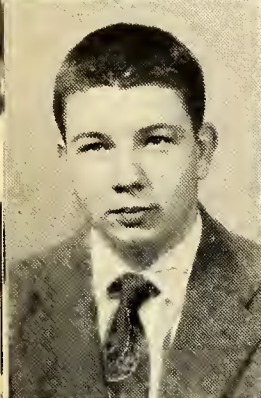
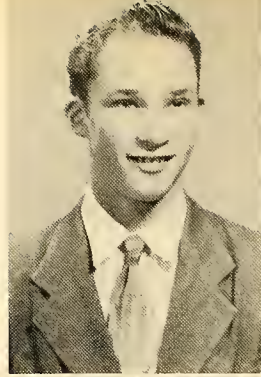
Ronald Wilkins Dixon  
 Billy Reid Dodson  
 Ben David Farmer  
 Mary Jane Fenton



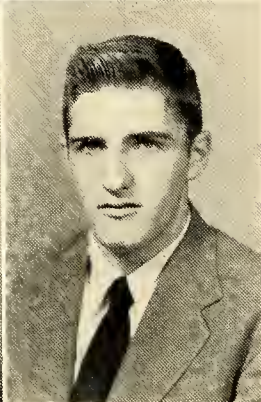
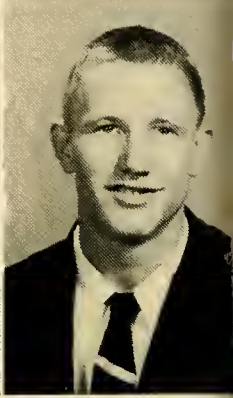




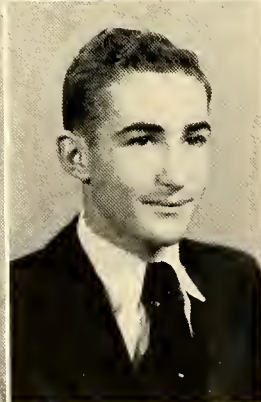
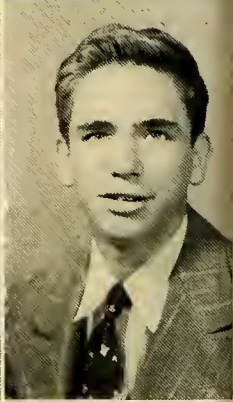
Betty Jean Hedgepeth  
 Kenneth Lee Isley  
 Jimmy Pascall Justice  
 Sally Frances Long



Robert Kent Mann  
 Katie Odell  
 Mary Ann Paris  
 James Mack Payne



Patricia Ann Pearson  
 William Rickard Petty  
 Betty Jo Ray  
 William Leonard Scarlette



Emily Jane Tapp  
 Bobby Teer  
 Maude Evelyn Tingen  
 Nellie Mae Tingen



Lois Jeanette Wagoner  
 Virginia Ann Williams

Not pictured:  
 Naomi Sarah Blackwell  
 Bobby Hunter Bolden  
 Faye Dean Roney  
 Peggy Jean Wood





# Sophomores



Seeking Wisdom



Guthrie, Whittemore, Holt, Loy, Dilks  
Cheek, Mora, Clark



## CLASS OFFICERS

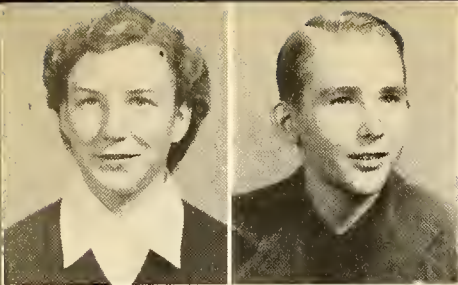
### SECTION I

MARCO MANOLO MORA ..... *President*  
 THOMAS CLENDELL HOLT ..... *Vice President*  
 KENNETH ROWLAND DILKS ..... *Secretary*  
 BILLY MAYNARD CHEEK ..... *Treasurer*

### SECTION A

JIMMY FRANKLIN CLARK ..... *President*  
 WILLIAM GILLMORE GUTHRIE ..... *Vice President*  
 SANDRA JANE WHITTEMORE ..... *Secretary*  
 JUDY ELIZABETH LOY ..... *Treasurer*

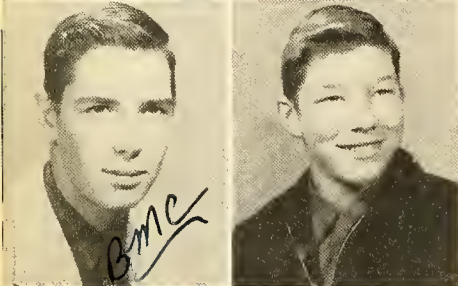




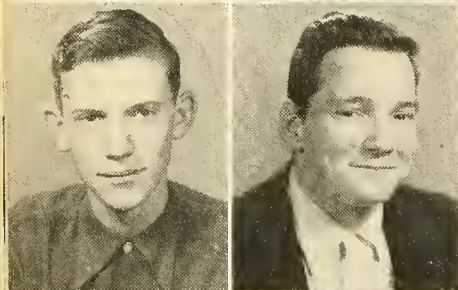
Billie Ann Atkinson  
George Stanford Bason  
Judy Starr Bowman  
Nancy Jeanette Bradshaw



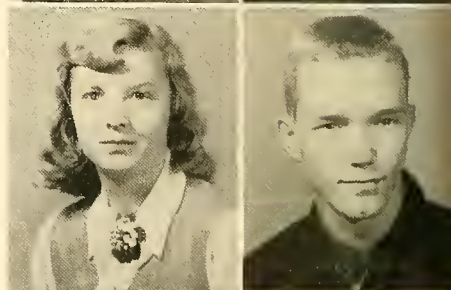
Carolyn Marie Burke  
Gloria Ann Carden  
Mary Evan Cates  
Grady Lindo Caviness



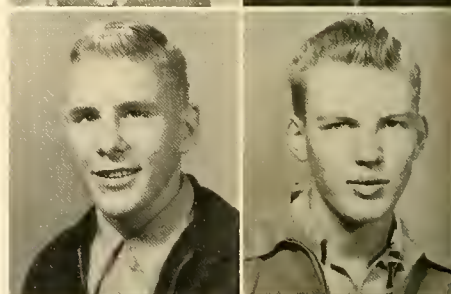
Billy Maynard Cheek  
Jimmy Franklin Clark  
Louise Scott Cooper  
Loranda Gail Cox



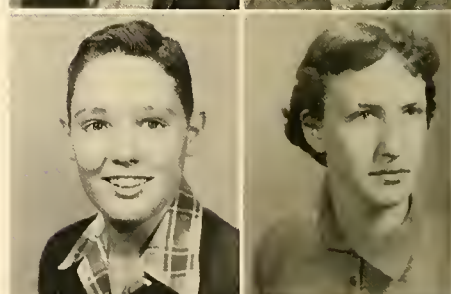
Charles Milton Crawford  
Herman Theodore Crawford  
Margaret Anne Crawford  
Robert Holt Davis



Kenneth Rowland Dilks  
Carrie Lucille Draughn  
Hugh Julius Duffer  
William Ramsey Euliss



Robert Minter Farmer  
Lois Janet Gray  
William Gillmore Guthrie  
Bettie June Hanford



Carolyn Rebecca Hedgepeth  
Barbara Ann Henderson  
Thomas Clendell Holt, Jr.  
Larry Joe Isley



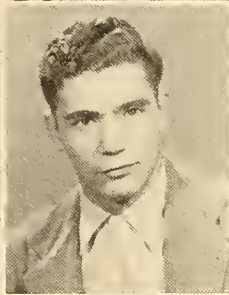




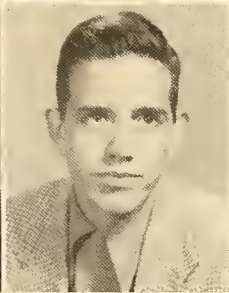
Jarvis Eugene Johnson  
 Barbara June Justice  
 Al Winslow Kelly  
 Judy Arlene Lipscomb



Judy Elizabeth Loy  
 Sara Fenton Mann  
 Margaret Ann Marshall  
 Patricia Ann Martin



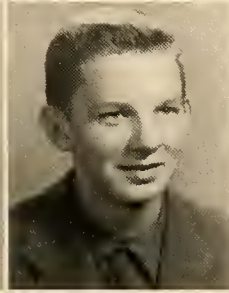
Barbara Ann Mills  
 Norman Eugene Mize  
 Marco Manolo Mora  
 Carrie Lula Odell



Coleman Perry Owen  
 Robert Woodrow Phillips  
 Bennie Harold Quakenbush  
 Mabeline Riddle



Martha Sue Roberson  
 Barbara Jean Rowland  
 Joanne Scott  
 Alma Eudell Sharpe



Rita Sonjia Steele  
 John Ruffin Tingen  
 Sara Lane Wells  
 Sandra Jean Whittemore



Shirley Christine Williams  
 Not pictured:  
 Eston Eugene Dalton  
 Billy Ross Halthcock  
 Thomas Price





*F  
r  
e  
s  
h  
m  
e  
n*



A Good Beginning



GATES, COOK, HUNTER, COBLE, LOY  
GUTHRIE, WEBSTER



CLASS OFFICERS

SECTION I

- JOHN ALVIS WEBSTER ..... *President*
- WALLACE CLAYTON SNIPES ..... *Secretary*
- FORREST DORLTON LOY ..... *Vice President*
- GALE MADELINE COOK ..... *Treasurer*

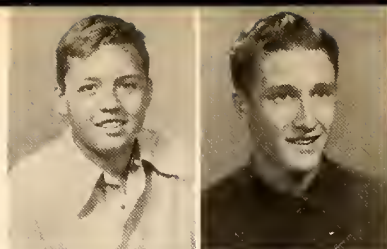
SECTION A

- THOMAS GILES HUNTER ..... *President*
- ORVILLE MAX GUTHRIE ..... *Vice President*
- JEAN CAROLYN CATES ..... *Secretary*
- DOLLY DEANNA COBLE ..... *Treasurer*





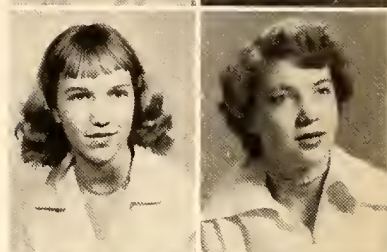
Fred Ernest Abercrombie  
Evelyn Mae Allen  
Fay Dean Ashe



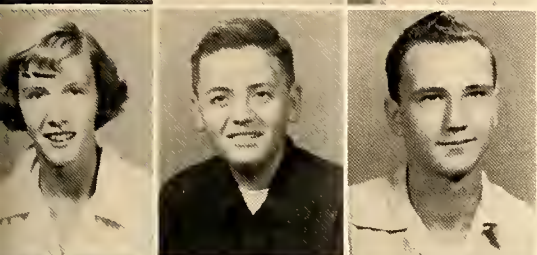
Jack Kenneth Barnes  
Donald Edward Dixon



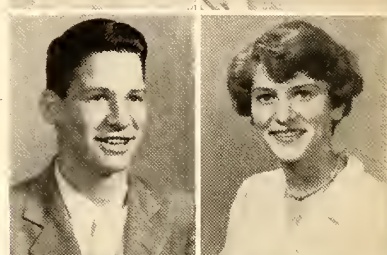
Douglas Ray Brown  
Vivian Carolyn Burke  
Patsy Grey Carden



Virginia Lou Carden  
Jean Carolyn Cates



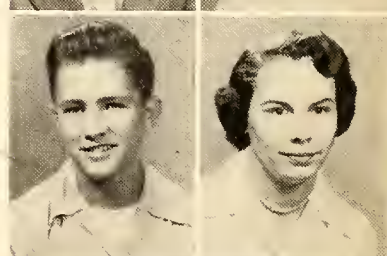
Gratha Mae Caviness  
Carl Winfred Church  
Milton Lee Clapp



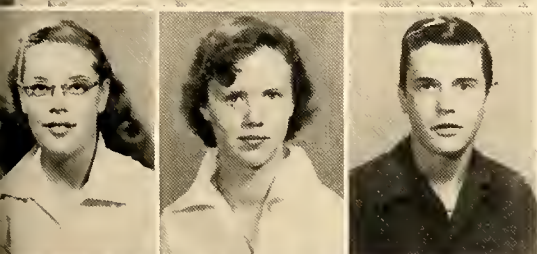
Robert Lee Clark  
Dolly Deanna Coble



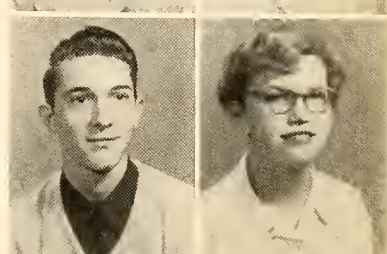
Patricia Ann Coggins  
Gale Madeline Cook  
Ronnie James Crutchfield



Robert Warren Dilks  
Jeanette Marie Farrell



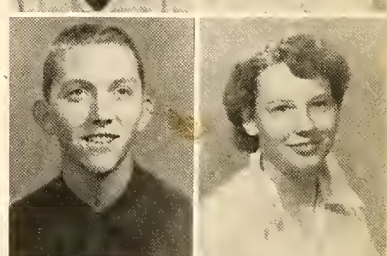
Marcia Patterson Farrell  
Shelby Jean Farrell  
Freddie O'Neal Foster



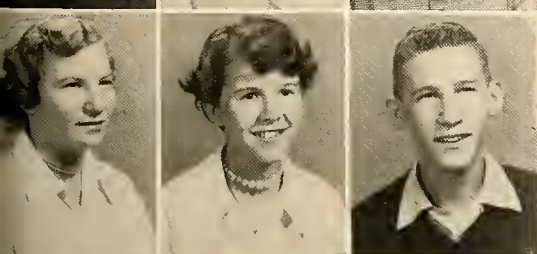
Jerry Woods Foster  
Paula Dean Gillespie



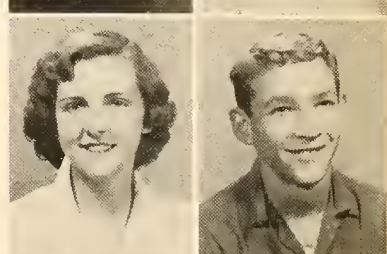
Orville Max Guthrie  
Peggy Esther Holt  
Thomas Giles Hunter



Buddy Lee Isley  
Patricia Ann Johnson



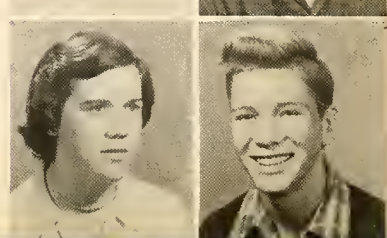
Shirley Jean Johnson  
Barbara Kay Jones  
Jimmy Allen Jones



Ella Rae Justice  
Roger Dean Justice



John Dixon Kimrey  
Carol Anne Lashley  
Janis Liepnieks

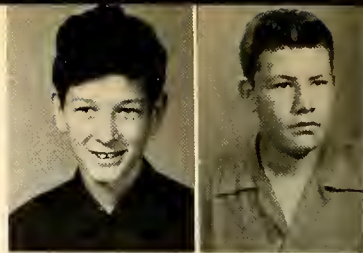


Linda Crawford Long  
Forrest Durlton Loy





Mary Ruth Marr  
Delmar Warren McAdams  
Raymond Ronald McPherson



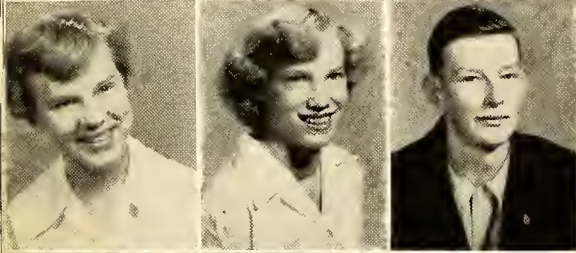
Robert Hewitt Merritt  
Joseph McShera Moize



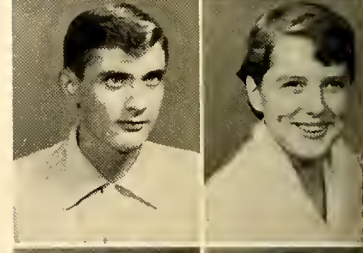
Judith Andrea Needham  
Marilyn Elaine Norris  
Christine Moore Pass



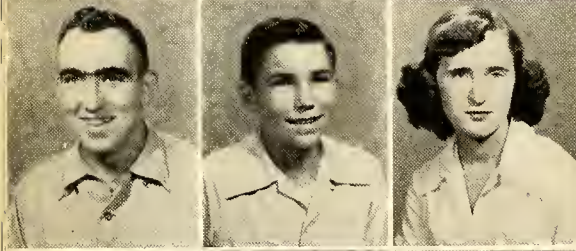
Betty Jo Payne  
Barbara Ann Ray



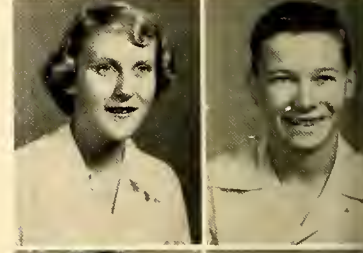
Odean Riley  
Johnnie Lea Roberson  
Bennie Rowland



Ray Douglas Sawyer  
Glenda Lee Scott



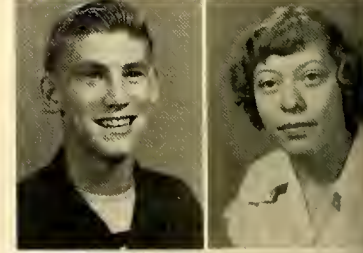
Raymond Franklin Smith  
Wallace Clayton Snipes  
Rosa Ann Stanley



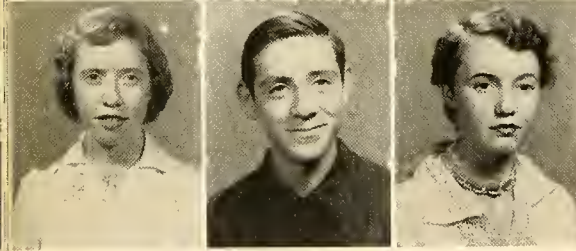
Patsy Elizabeth Stone  
Thomas Edison Strickland



John Alvis Webster  
Nancy Carol Webster  
Connie Lou Williams



Carolis Omar Wood  
Carolyn Mae Wood



Dorcus Urania Wood  
Larry David Wood  
Myrtle Rebecca Workman  
Velta Valentina Vecziedinsh



Not pictured:  
Everett Carden  
William Linwood Carden  
Jack Farrell Roney

### SNAPSHOTS





# Our Honor Roll



PEGGY WEBSTER  
*Most Athletic Girl 1952*



ALICE TINGEN  
*Best All-Around Girl 1952*



WILLIAM PHILLIPS  
*State winner of Cooperative Essay Contest*



JERRY LOY  
*Best All-Around Boy 1952*



JERRY HOLT  
*Most Athletic Boy 1952*



CAROLYN ABERNATHY  
*State President of F. H. A.  
Winner of Elon College Scholarship*

The four people pictured together were honored as follows:

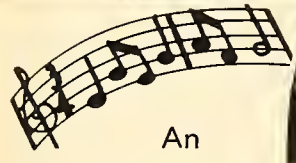
DR. M. E. YOUNT  
*25 years as Superintendent of Alamance County Schools*

MRS. BESSIE H. ROBBINS, MRS. AUDREY W. GARRETT, and G. B. ROBBINS  
*25 years in Alexander Wilson School*





SINGING IN THE RAIN



An Evening

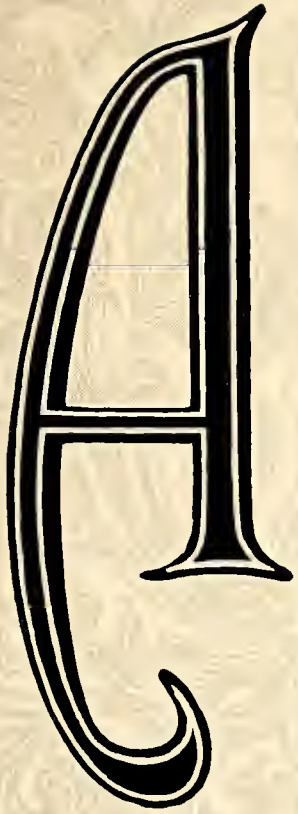



To Remember

*Junior-Senior Banquet*







A

ctivities





## WILSONIAN STAFF

STAFF—Seated, left to right: Rebecca Brown, Assistant Advertising Manager; Janet Capps, Art Editor; Mary Ann Paris, Associate Editor; Camilla Isley, Editor-in-Chief; Patsy Hunter, Associate Editor; Jean Thompson, Typist; Peggy Covington, Snapshot Editor. Standing: Gail Dixon, Art Editor; Mrs. Robbins, Sponsor; Bobby Lawrence, Sports Editor; Jerry Doss, Business Manager; Patricia Pearson, Assistant Business Manager; Carolyne Parrish, Typist; Reba Atkinson, Sports Editor. Not pictured: Jerry Holt; Advertising Manager.



## FUTURE TEACHERS OF AMERICA

OFFICERS—Left to right: Dina Crenshaw, Carolyn Abernathy, President; Patsy Jo Hunter, Rebecca Brown, Secretary-Treasurer; Paula Gillispie, Sara Mann, Patsy Holt, Vice President; Camilla Isley, Louise Cooper, Mrs. Robbins, Adviser.





GOOD CITIZENSHIP COUNCIL

COUNCIL—Seated, left to right: Janet Capps, Freddie Foster, Margaret Marshall, Jerry Doss, Vice President; Peggy Ray, President; Rebecca Brown, Secretary; Emily Tapp, George Bason, Treasurer; Ronnie Crutchfield. Standing: Kent Mann, Mr. Robbins, Adviser.



HOOTIN' OWL STAFF

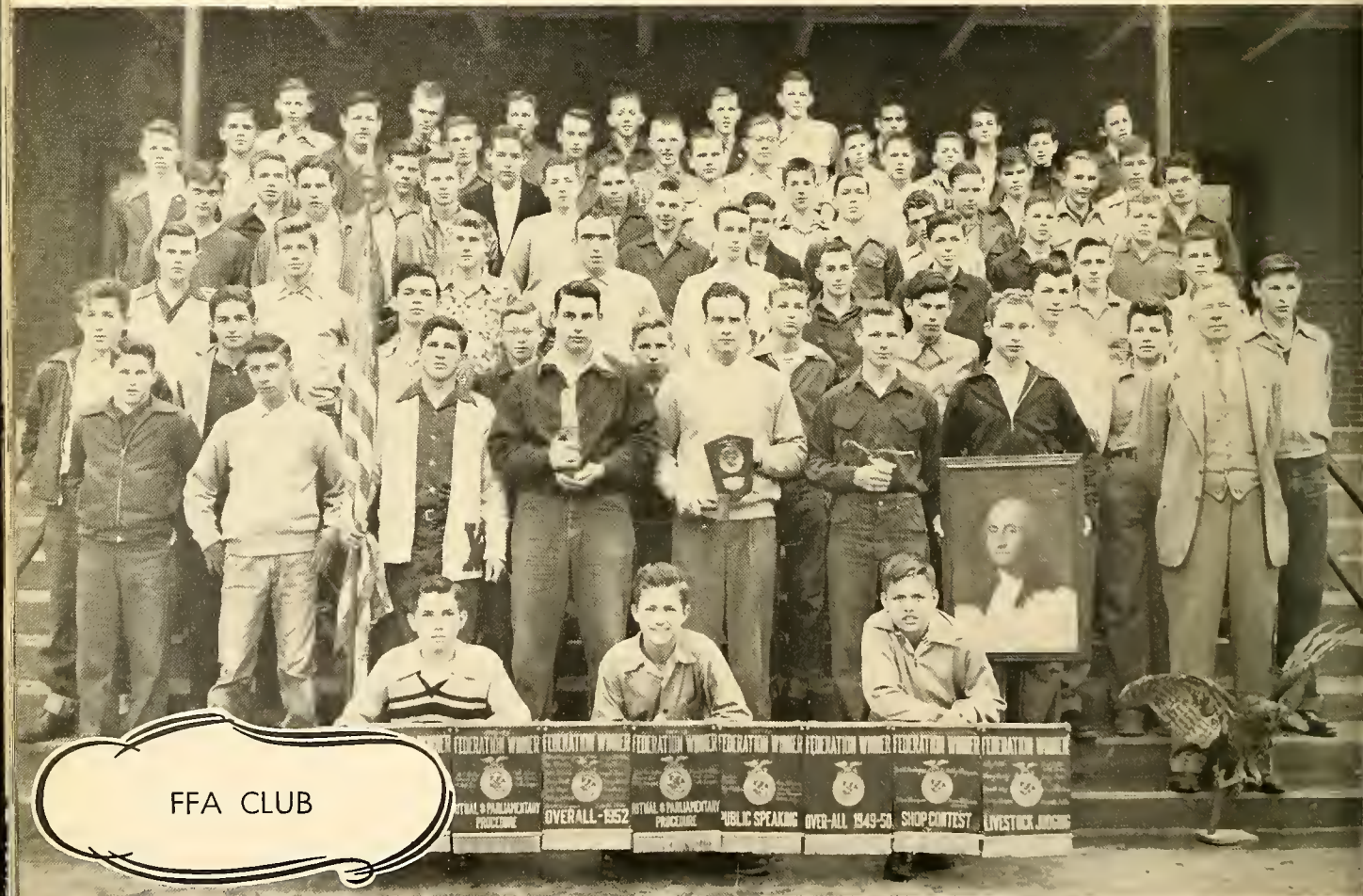
STAFF—Seated, left to right: Billie June Coble, Julia McVey, Glenn Thompson, Gail Dixon, Editor; Patsy Jo Hunter, Associate Editor; Maxine Martin, Jean Thompson, Janet Capps. Standing: Miss Davis, Adviser; Carolyn Abernathy, Bobby Lawrence, Peggy Ray, Patsy Holt.





FHA CLUB

OFFICERS—Clara Albright, President; Peggy Covington, Vice President; Barbara Crawford, Secretary; Barbara Justice, Treasurer; Mrs. James Rich, Adviser.



FFA CLUB

OFFICERS—Jerry Doss, President; Harold Curtis, Vice President; Don Martin, Secretary; Ben Martin, Treasurer; Mr. Cooper, Adviser.



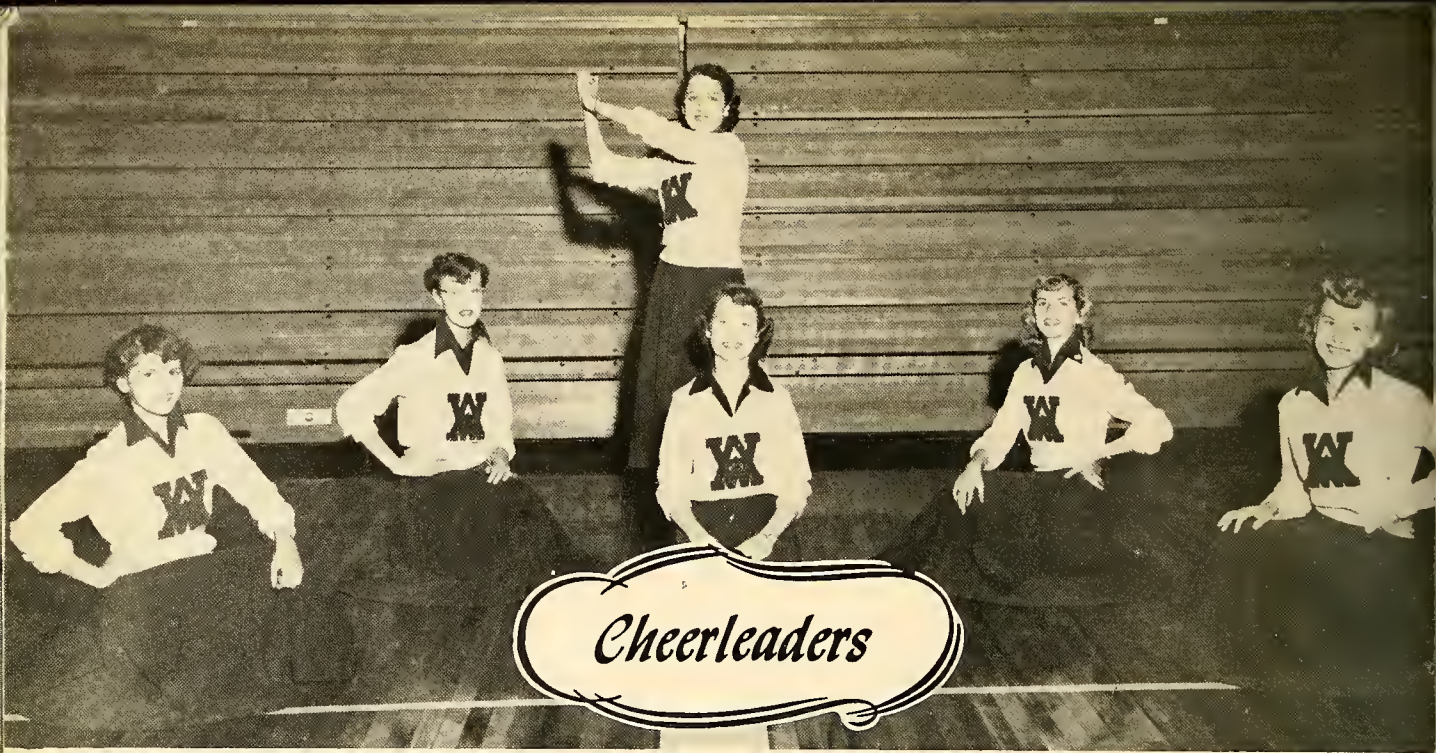


First row, left to right: Patsy Coble, Barbara Crawford, Faye Dean Roney, Mary Jane Fenton, Mary Ann Paris, Jeanette Mangum. Second row: Betty Jones, President; Jane McPherson, Naomi Blackwell, Shirley Brown, Reba Atkinson, Lois Wagoner, Janet Frazier. Third row: Patricia Pearson, Clara Albright, Jean Thompson, Shirley Carden, Dina Crenshaw, Rebecca Brown, Betty Hedgepeth, Virginia Williams, Frances Smith. Fourth row: Ben Farmer, Al Kelly, Vernell Ashley, Treasurer; Billy Petty, Mack Payne, Ronald Clapp, Miss Hoffman, Director.



Left to right: Mary Jane Fenton, Margaret Marshall, Harry Brady, Kent Mann, Chief, Rebecca Brown, Mary Cates. Not pictured: Billy Cheek.



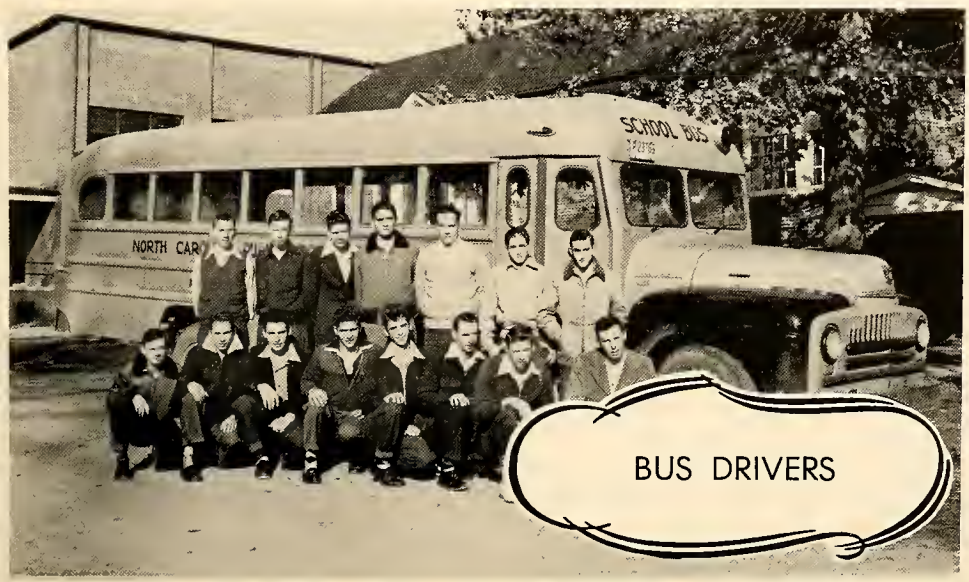


CHEERLEADERS—Seated, left to right: Deanna Coble, Patsy Coggins, Nancy Isley, Billie June Coble, Mary Ann Paris. Standing: Ruth Capps, Chief.



OFFICERS—Scott Pendergraph, President; Kent Mann, Vice President; Carolyn Abernathy, Secretary-Treasurer; Mr. Abernathy, Adviser.





**BUS DRIVERS**

First row, left to right: Glenn Thompson, Paschall Justice, Don Martin, Marco Mora, Burke Loy, Walker Moore, Donald Dixon, Ben Martin. Second row: Buddy Isley, Charles Crawford, Glenn Crutchfield, Billy Dodson, Jerry Doss, Kenneth Isley, Bobby Teer.



# Girls' Basketball



Watch that girl



CAROLYN ABERNATHY  
Co-Captain

BESSIE H. ROBBINS  
Coach

DINA CRENSHAW  
Captain



First row, left to right: Jean Carolyn Cates, Janet Capps, Carolyn Abernathy, Dina Crenshaw, Rebecca Brown, Judy Bowman. Second row: Mabeline Riddle, Faye Dean Roney, Sarah Mann, Shelby Farrell, Eliza-

beth Mullins, Jean Rowland, Gail Cox, Nancy Isley. Third row: Reba Atkinson, Manager; Virginia Carden, Jeanette Farrell, Louise Cooper, Nancy Webster, Odean Riley, Mrs. Robbins.



# Boys' Basketball



A Sure Shot

VERNELL ASHLEY  
Captain

R. H. ABERNATHY  
Coach

SCOTT PENDERGRAPH  
Co-Captain



First row, left to right: Buddy Phillips, Scott Pendergraph, Mack Payne, Vernell Ashley, Al Kelly, Jerry Holt, Bobby Lawrence.

Second row: Freddie Foster, Ronald Clapp, Billy Cheek, Billy Petty, Ben Farmer, Herman Pendergraph, Alvis Webster.

Third row: Jack Barnes, Douglas Brown, Ronald Brooks, Delmar McAdams, Wallace Snipes, Leonard Scarlett.

Fourth row: Mr. Abernathy, Robert Merritt, Clendall Holt, Bobby Dilks, Max Guthrie, Carl Church, Tommy Hunter.





ALAMANCE COUNTY CHAMPIONS--1952

First row, left to right: Harold Curtis, Bobby Lawrence, Leonard Scarlette, Ben Farmer, Kenneth Dilks, Grady Caviness. Second row: Herman Pendergraph, Herman Crawford, Mack Payne, Paschall Justice, Jerry Brooks,

Mr. Abernathy, Coach. Third row: Al Kelly, Jerry Holt, Vernell Ashley, Scott Pendergraph, Larry Joe Isley, Ronald Clapp.

# Baseball

## BASEBALL RECORD

5.....	Alexander Wilson	Haw River .....	4
9.....	Alexander Wilson	Elon .....	8
4.....	Alexander Wilson	Graham .....	0
0.....	Alexander Wilson	Eli Whitney .....	3
4.....	Alexander Wilson	E. M. Holt .....	2
8.....	Alexander Wilson	Mebane .....	5
11.....	Alexander Wilson	Pleasant Grove .....	2
2.....	Alexander Wilson	Altamahaw Ossippee .....	1
10.....	Alexander Wilson	Mebane .....	8
9.....	Alexander Wilson	Graham .....	7



COACH ABERNATHY





JERRY HOLT  
Captain



MARCO MORA



JERRY DOSS  
Co-Captain



KENT MANN



BEN FARMER



FOOTBALL

BILLY PETTY

HERMAN CRAWFORD

HAROLD CURTIS

RONALD CLAPP

PASCHALL JUSTICE







DINA CRENSHAW  
*Captain*



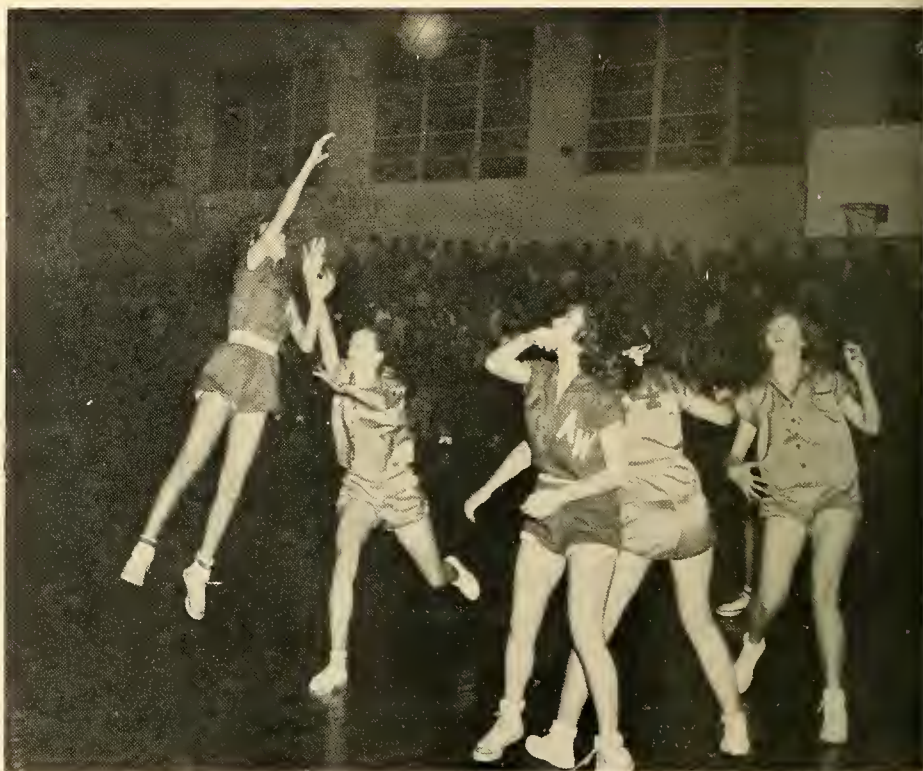
CAROLYN ABERNATHY  
*Co-Captain*



JANET CAPPS



BARBARA MILLS



JUDY BOWMAN

FAY DEAN RONEY

JEAN CAROLYN CATES



REBECCA BROWN



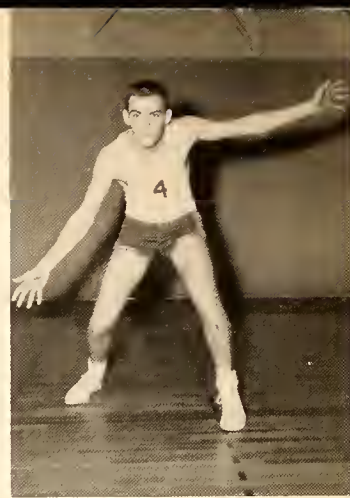




VERNELL ASHLEY  
*Captain*



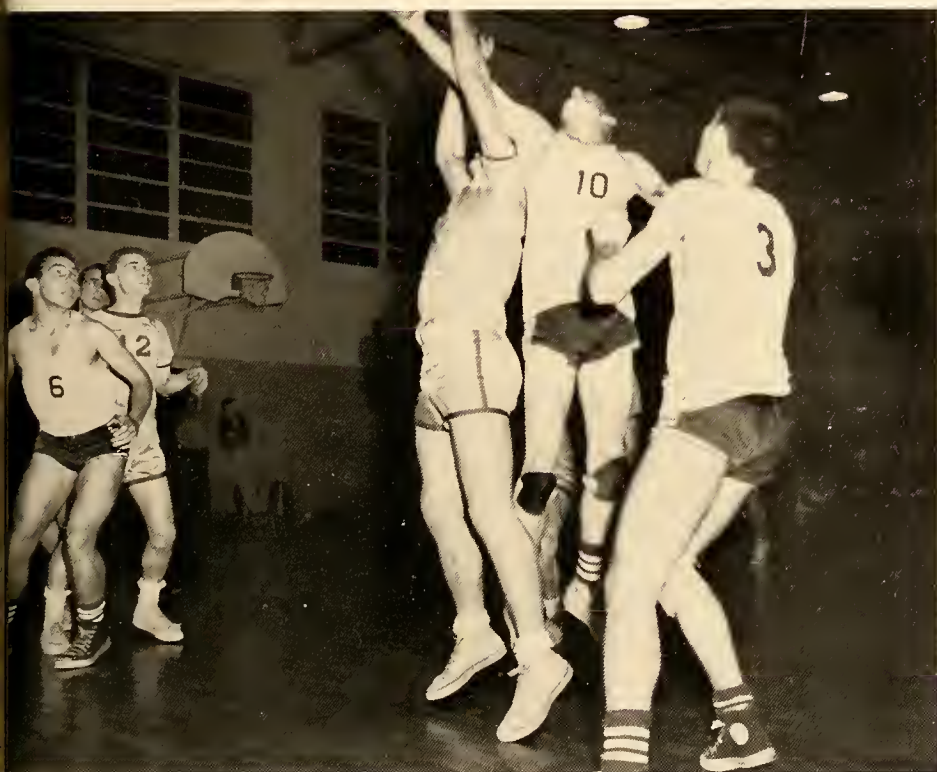
SCOTT PENDERGRAPH  
*Co-Captain*



JERRY HOLT



MACK PAYNE



AL KELLY

BILLY CHEEK



BOBBY LAWRENCE



BUDDY PHILLIPS







*Advertisers*





CAROLINA DRUG COMPANY

YOUR FRIENDLY



STORE

Rendering a Broader Health Service to the Community for  
Eighteen Years

PHONE 2691

MEBANE, N. C.

Compliments of

CHARLES V. SHARPE

WRIKE DRUG COMPANY

TWENTY-EIGHT YEARS OF  
CONTINUOUS SERVICE

Main Street

Graham, N. C.



C & H MOTOR SALES, Inc.

SALES SERVICE

400 West Center St.

Mebane, North Carolina

Telephone 2071

GRAHAM SODA SHOP

On Square, Graham

KODAKS—FILM—DEVELOPING

FLASH BULBS



*Latest* HOUSEHOLD APPLIANCES

Home Appliance Store

Better Products for Happier Living

SERVICE BEYOND THE SALE

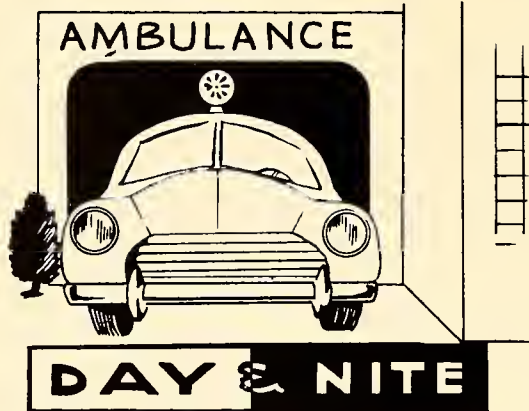
CECIL E. MOSER

W. Elm Street

TELEPHONE 6-9074

Graham, N. C.





**McCLURE FUNERAL HOMES**

141 S. Main Street  
GRAHAM, N. C.  
Dial 2711

605 Webb Avenue  
BURLINGTON, N. C.  
Dial 7488

**PATE - DAWSON COMPANY**  
FRESH FRUITS AND VEGETABLES  
WHOLESALE  
BE HEALTHY BE HAPPY

Burlington, N. C.  
and  
Goldsboro, N. C.

**PEPSI-COLA BOTTLING COMPANY  
OF  
BURLINGTON**

1423 Church Street  
Burlington, N. C.  
Phone 6-1273

**R. A. Moore**

GROCERIES MEATS  
FRESH MEATS, FRESH VEGETABLES  
FROZEN FOODS  
"SERVICE THAT SATISFIES"  
Phone 6-3292  
Graham, North Carolina

**THOMPSON'S SUPER MARKET  
GENERAL MERCHANDISE**

Swepsonville, N. C.  
Phone 3307

**JACK'S SODA SHOP  
CURB SERVICE—FOUNTAIN SERVICE**

PIT BAR-B-QUE  
Graham  
North Carolina



## Leath

HOSIERY MILL, Inc.

Manufacturers of Ladies'  
Full Fashioned Hosiery

GRAHAM  
NORTH CAROLINA

## Nu-Vogue

HOSIERY MILL, INC.

Manufacturers of  
45-51-60 Gauge  
Full Fashioned Hosiery

GRAHAM  
NORTH CAROLINA  
W. G. KING SR., Manager

Compliments  
of  
A FRIEND

## Better Values

CRACK and JOE, Inc.  
DRY GOODS  
and  
READY-TO-WEAR



Main St.

Graham, N. C.

## WOODY HARDWARE CO.

General Hardware  
AVOLITE PAINTS—FARM EQUIPMENT  
Phone 6-3754  
East Elm Street  
Graham, North Carolina

## WORTH L. THOMPSON AGENCY

For all Your Insurance Needs  
Phone 6-0969  
Box 89  
GRAHAM, NORTH CAROLINA



# MELVILLE CHEVROLET COMPANY

SALES and SERVICE



Dial 2851

Mebane, N. C.

## Hal's Store

MEATS and GROCERIES  
FLOUR and FEED  
GAS. and OIL

Route 1

Mebane, N. C.

## LLOYD'S DINER

FOUNTAIN SERVICE SANDWICHES  
SHORT ORDERS REGULAR MEALS

Dial 3928

Swepsonville, N. C.

## FRANK'S JEWELRY

Watches and Diamonds  
Wedding and Graduation Gifts  
EASY PAYMENT PLAN  
202 N. Main Street  
Graham, N. C.

## WHITE'S FLOWER SHOP

Flowers for all occasions  
CORSAGES and SPRAYS  
1011 South Main St.  
GRAHAM, N. C.

## RICH & THOMPSON FURNITURE AND APPLIANCES

DIAL 6-4202

GRAHAM, N. C.





210 W. FRONT STREET

## HOOD SPORTING GOODS

"PLAY MORE, LIVE LONGER"

Athletic Equipment  
Special Price for Schools and Students

BURLINGTON, N. C.



119 North Greene Street

MAKE OUR STORE YOUR  
HEADQUARTERS FOR

ATHLETIC EQUIPMENT AND  
SPORTING GOODS

"It Pays To Play"

## Coble Sporting Goods Co.

Greensboro, N. C.

### GRAHAM TRACTOR CO. INC.

Graham, N. C.



FORD TRACTOR  
DEARBORN FARM EQUIPMENT  
Phone 6-2272

### BARKLEY-OXFORD EQUIPMENT CO.

ALLIS-CHALMERS

SALES

SERVICE

Webb Avenue  
BURLINGTON, N. C.

Phone 6-7725

PHOTOGRAPHS TAKEN BY  
WILLIAM LYNCH STUDIOS

Dial 4521

Mebane, North Carolina

### CATHERINE'S BEAUTY SHOP

SWEPSONVILLE, N. C.

Phone 3307





DRINK  
**Coca-Cola** 5¢

BOTTLED UNDER AUTHORITY OF THE COCA-COLA COMPANY BY

## McPherson's FARM STORE

Quality Meats, Produce  
Groceries

DEALERS IN PURINA FEEDS  
Mebane, N. C.

## GRAHAM HARDWARE CO., INC.

SERVICE THAT SATISFIES

Since 1903

Phone 6-4409

GRAHAM, N. C.

## CENTRAL GROCERY COMPANY, INC.

Wholesale

Wholesale Groceries, Notions,  
and  
Confectioneries

122 N. Main St.  
BURLINGTON, N. C.

FOR  
*delicious food*

## DO DROP INN

CURB SERVICE

FOUNTAIN SERVICE

SANDWICHES

"A Popular Place to Meet and Eat"

Highway 54

1 Mile East of Graham



*Exquisite Jewelry*

## Hadley's

Established 1898

THE JEWELERS

GRAHAM, N. C.





*Compliments of*

## JAROSZ HOSIERY MILL

### GRAHAM SHOE SHOP

J. A. DOLLAR, Proprietor

Phone 6-5931

Call for and Delivery

GRAHAM, N. C.

Specializing in Stylish  
Made-to-Measure Clothes for  
High School Boys

"YOU DESIGN IT—WE MAKE IT"

### T. N. Boone TAILORS

Burlington, N. C.

Compliments of  
HUGHES MOTOR COMPANY



Compliments of

### HAL'S MEN'S SHOP

"Things to wear for men who care"

H. L. McADAMS, Proprietor

Phone 6-1133

Graham, N. C.



*Nutritious*  
DAIRY PRODUCTS

### MELVILLE DAIRY

"ALAMANCE COUNTY'S ONLY LOCAL, INDEPENDENT DAIRY"



*Best of luck always  
Sara Sheel*

Compliments of  
**WARD BAKING COMPANY**

BAKERS  
of  
TIP-TOP BREAD AND CAKE

*Best of luck to a real sweet teacher  
Margaret M.*

Compliments of  
**Harcourt & Co.**

JEWELERS                      STATIONERS  
ENGRAVERS  
LOUISVILLE, KENTUCKY

*Best of luck to a  
wonderful teacher.  
I consider it an  
honor to have had  
you for my teacher.  
Barbara Anderson*

CONGRATULATIONS  
and  
BEST WISHES  
GREENE FUEL, GAS COMPANY  
of  
NORTH CAROLINA, Inc.  
Graham, North Carolina

**GRAHAM MOTOR SALES,  
Inc.**  
P. O. Box 526  
GRAHAM, N. C.  
Phone 6-3692

Compliments of  
  
**A FRIEND**

Compliments of  
**GRAHAM DRY CLEANERS**  
and  
**HOLT'S GROCERY STORE**  
and  
**SERVICE STATION**



I have enjoyed  
the past year very  
much. You are  
a real nice and  
understanding  
teacher. Best of luck  
in the coming years.

Judy Bowman

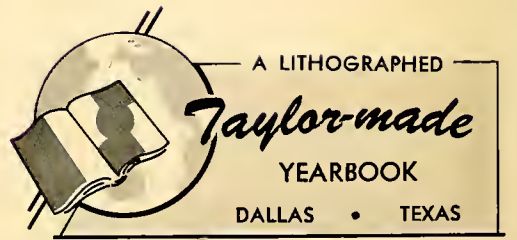


Mr. Williams,  
you have been a  
wonderful teacher,  
and friend. I hope  
it may go on and  
maybe I will pay  
more attention to  
your teaching. Best  
of luck.

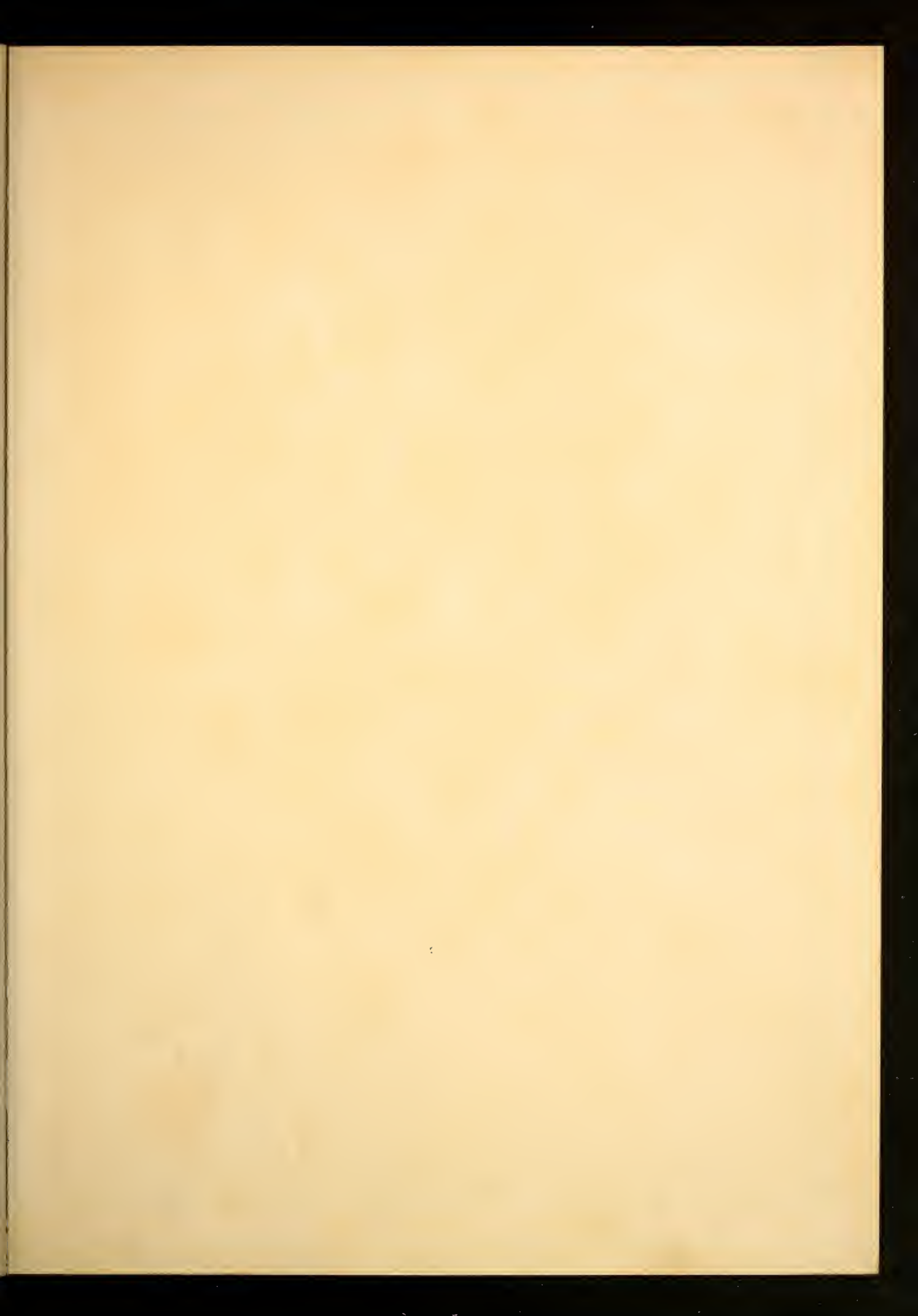
Lucille Draughn

Best wishes to each of  
my best teachers.  
Good luck.  
Gail Dixon  
.53

Mr. Williams,  
I have enjoyed being  
in your class this year  
Best of luck always.  
Shirley Carden













Alamance County Public Libraries  
J. S. Spring Street  
Burlington, North Carolina 27215







BRITISH  
LIBRARY