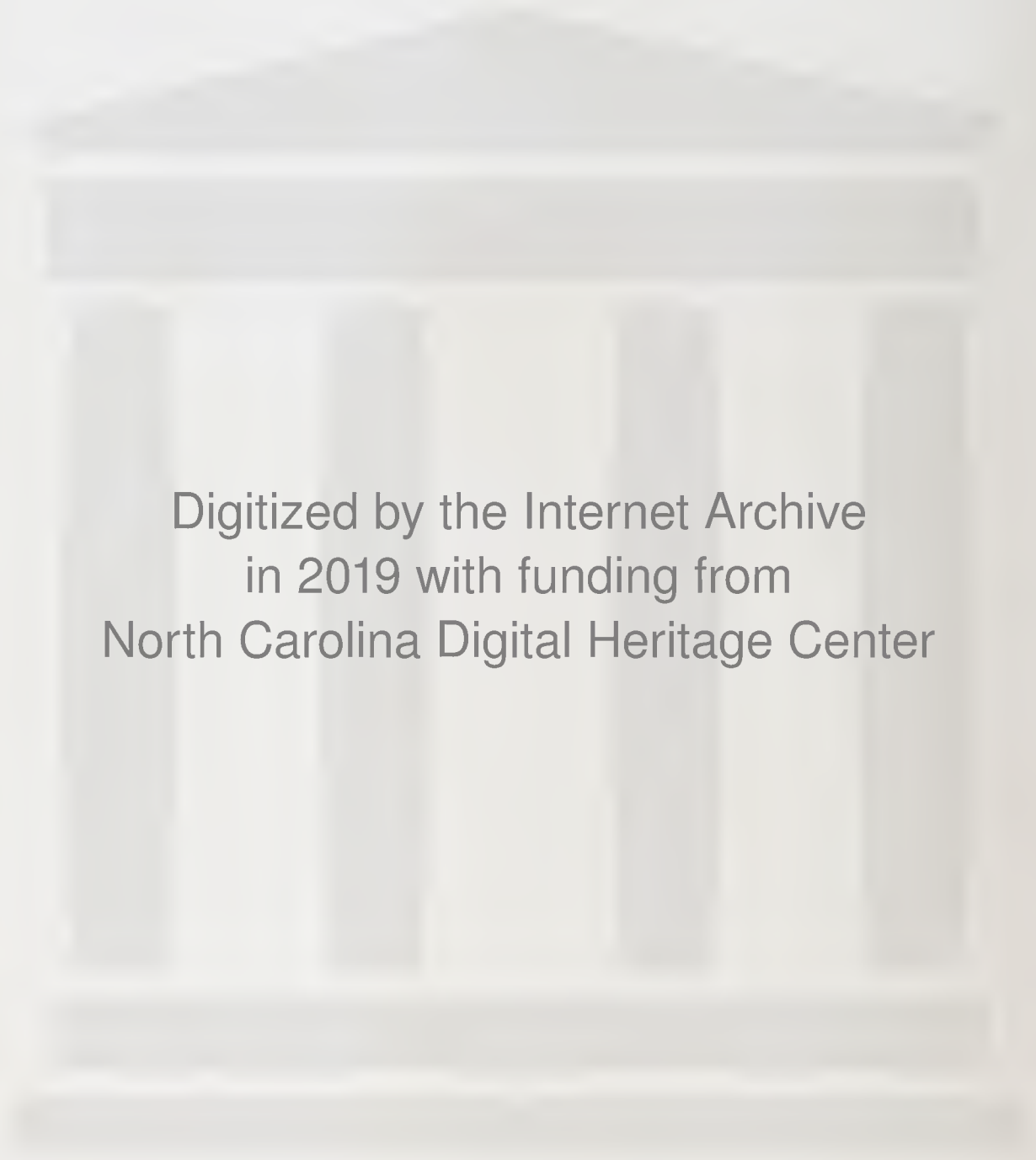


WINDSWEPT ECHOES '55



Digitized by the Internet Archive
in 2019 with funding from
North Carolina Digital Heritage Center

Windswept Echoes

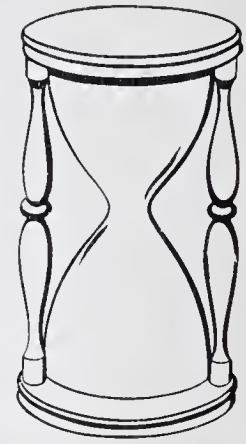


1955

COPELAND HIGH SCHOOL

Route No. 2, Dobson, North Carolina

FOREWORD



JO ANN RING - - - - - Co-Editors
AVANELL J. POINDEXTER
BERTHA J. VENABLE - - - - - Business Manager
SHELBA JOHNSON - - - - - Circulation Manager

We, the Annual Staff of 1955, not wanting our high school days to be forgotten, bring you this book. May it truly become a spotlight to acquaint you with our high school days as we recall them.



To Mr. Wayne Nance, who has taught us lessons in good sportsmanship and fair play, and whose wisdom and guidance have helped us to realize the many opportunities of life, we the Annual Staff dedicate the 1955 issue of WINDSWEPT ECHOES.



BRUCE H. THARRINGTON - - - - - Superintendent

ARTHUR F. GRAHAM - - - - - Principal





Faculty



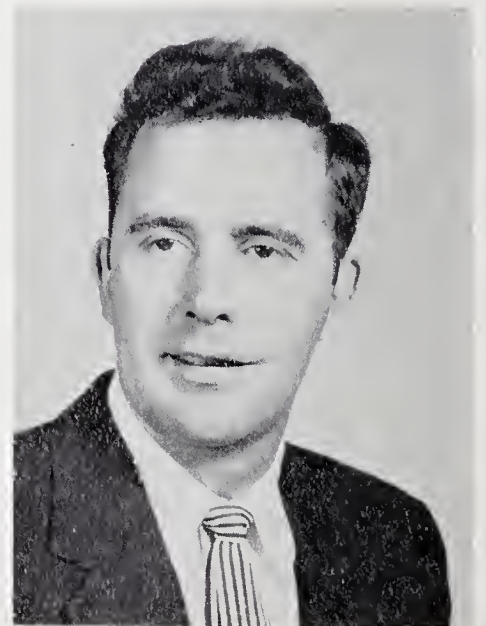
MARY ELLEN GRAHAM, Social Studies



VIRGINIA JONES, Commercial



RUTH COMER, Science



LONNIE BLEDSOE
Spanish and
Physical Ed.

ANNE REID, Mathematics



WAYNE NANCE, Physical Ed.

RUBY STANLEY, Home Economics



JAMES DAVIS, Agriculture

LUNCHROOM PERSONNEL



CUSTODIAN

**BUS
DRIVERS**





Seniors



BRENT HIATT - - - - - Co-Presidents
BILLY JAY MARION

KAY FRANCES STANLEY - - - - - Secretary

SHELBA JEAN JOHNSON - - - - - Treasurer



MASCOTS

MARCIA VENABLE
FRED KEY, JR.



BETTY JEAN COE

Tri-Hi-Y Club 1, 2, 4, Vice President 4; Glee Club 2, 3, 4; Beta Club 2, 3, 4; FHA Club 1, 2, 3; 4-H Club 1, 2; Basketball 1; Honor Council 2; Echo Staff, Co-Editor 4; Honor Roll 2, 3, 4; Marshal 3, 4.

OLIVER JAYHUE DANLEY

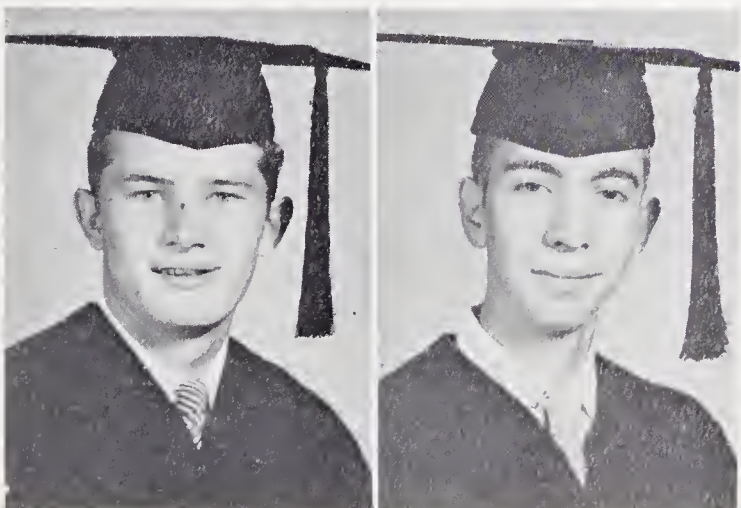
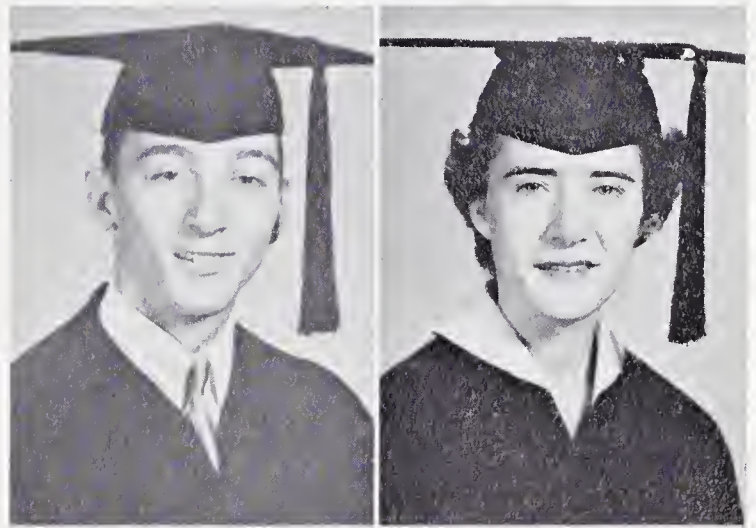
FFA Club 1, 2, 3, 4; Boy Scout 1, 2; Substitute Bus Driver 2, 3, 4.

ARNOLD GRAY DOBY

Class Secretary 2; Bus Driver 4; Beta Club 3, 4; Hi-Y, Chaplain 4; FFA 1, 2, 3, 4, Secretary 4; Marshal 3, 4; Basketball 1, 2, 3, 4; Baseball 3, 4; Echo Staff 4, Social Editor; Society, President 4; Student Government Officer 4; Honor Council 4; Honor Roll 2, 4; Superlative.

CAROL FULK DOTSON

Softball 1, 2; Basketball 2; 4-H Club 3, 4; Perfect Attendance 1; Beta Club 4; Honor Roll 3, 4; Glee Club 3.



JARVIS FRANKLIN FLIPPIN

FFA 1, 2, 3, 4; Class Officer, President 2, Vice President 3; Substitute Bus Driver 3; Baseball 1, 2, 3, 4; Student Government Officer; Boys' Sheriff 4; Society Officer 4; Superlative.

JAMES AUBREY FOWLER

FFA 1, 2, 3, 4; Superlative.

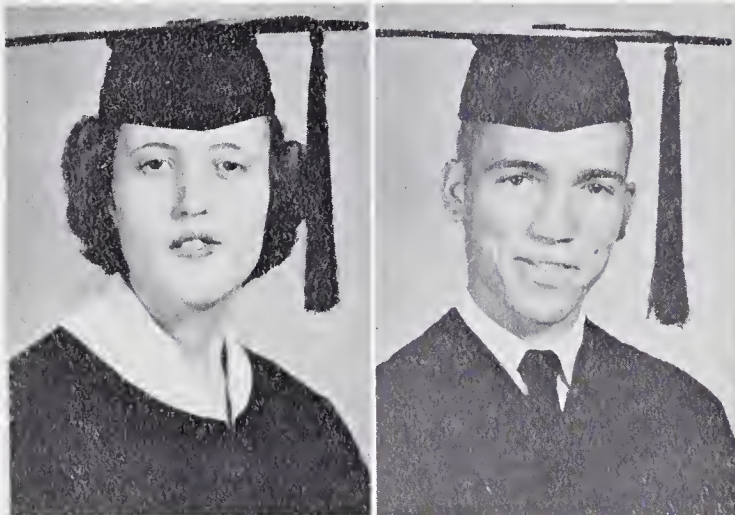
NANCY ANN HARBOUR

Student Government Officer, President 4; Class Officer 1, 2, 3, President 1, 2, Secretary 3; Windswept Echoes Staff 3, Associate Editor 3; Tri-Hi-Y Club 1, 2, 3, 4, President, Junior Club 2, Program Committee 3; Girl Scouts 1; Beta Club 2, 3, 4; FHA Club 1, 2, 3, 4; 4-H Club 1, 2; Basketball 1, 2, 3, 4, Co-Captain 4; Softball 1, 2; Perfect Attendance 1, 2; Chief Marshal 3, 4; Honor Roll 1, 2, 3, 4; Superlative.



HOMER WAYNE HALL

Beta Club 4; Echo Staff, Activities Editor 4; Vice President O. Henry Library Society; Honor Council 2, 4; Assembly Squad 4; Honor Roll 2, 3, 4; Superlative.



BARBARA ANN HUDSON

Beta Club 4; FHA Club 2, 3; Library Club 1, 2, 3; Bus Secretary 4; Glee Club 3, 4; Music Club 1, 2, 3; Echo Staff, Activities Editor; Honor Roll 3, 4; Superlative.

BRENT HERMAN HYATT

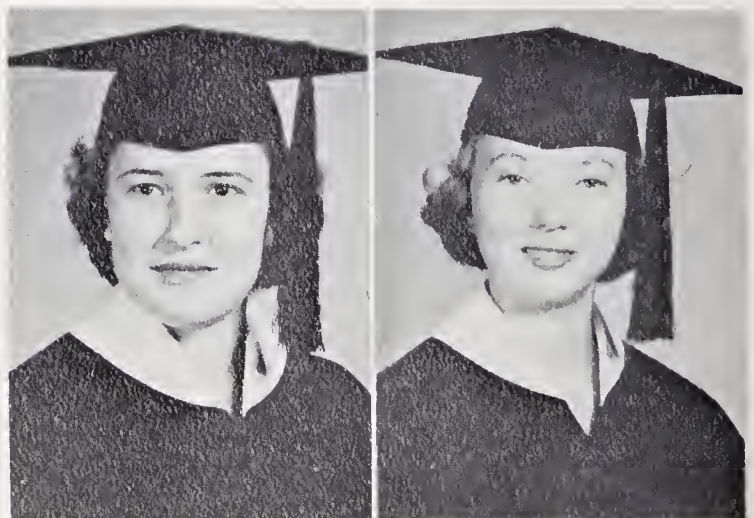
Class Officer Co-President 4; Beta Club 2, 3, 4; Hi-Y Club 3, 4, President 4; Marshal 3, 4; Basketball 4; Echo Staff, Sports Editor 4; FFA Club 1, 2, 3; Bus Driver 4; Honor Roll 2, 3; Superlative.

LILLIE HUDSON JOHNSON

Honor Council 1, 4; Honor Roll 1, 2, 3, 4; Glee Club 3, 4; Bus Secretary 4; Most Studious 4; Most Serious Minded 4.

SHELBA JEAN JOHNSON

Class Officer 2, 3, 4, Secretary 2, Treasurer 3, Assistant Secretary-Treasurer 4; FHA Club 1, 3; Tri-Hi-Y Club 4; Beta Club 3, 4; Windswept Echoes Staff, Circulation Manager 4; Bus Secretary 4; Honor Roll 2, 3, 4; Marshal 3, 4; Superlative.





CAROLYN GAE KEY

Basketball 1, 2; Softball 1; Typing Award 3; 4-H Club 1, 3, 4; Beta Club 4; Echo Staff, Typist 4; Honor Roll 3, 4.

DECIE MAE KEYE

Basketball 1, 2, 3, 4, Manager 1; Junior Varsity 1, Varsity 2, 3, 4; Tri-Hi-Y 1, 2, 3, 4; 4-H Club 1, 2, 3, 4, Assistant Secretary 4; FHA Club 1, 2, 3, 4; Library Club 2, 3, 4, Assistant Secretary 3; Softball 1; Student Council 4; Patrol Squad 4; Honor Roll 2; Girl Scouts 1; Superlative.

IRVIN WAYNE KEY

FFA Club 1, 2, 3, 4, Sentinel 4; Boy Scouts 1, 2, 3; Bus Driver 4; Superlative.

JANICE CAROL LAYNE

FHA 1, 2, 3, 4, Parliamentarian 4; Tri-Hi-Y 1, 2, 3, 4; Girl Scouts 1; Glee Club 4; Basketball 1, 2; Cheerleader 3, 4, Chief 4; Beauty Contestant, American Legion 3, 4; Echo Staff, Humor Editor 4; Softball 1, 2; Library Club 3; Manager, Girls' Basketball Team 3; Superlative.



BILLY JAY MARION

Class President 3; Class Co-President 4; FFA 1, 2, 3, 4, Reporter 3, President 4; Beta Club 3, 4; 4-H Club 1, 2; Junior Annual Staff 3; Hi-Y 2, 3, 4, Secretary 4; Basketball 1, 2, 3; Bus Driver 4; Marshal 3, 4; Vice President Student Government 4; Superlative.

VERSIE MAE MARION

Library Club 1, 2; Bus Secretary 4; Superlative.

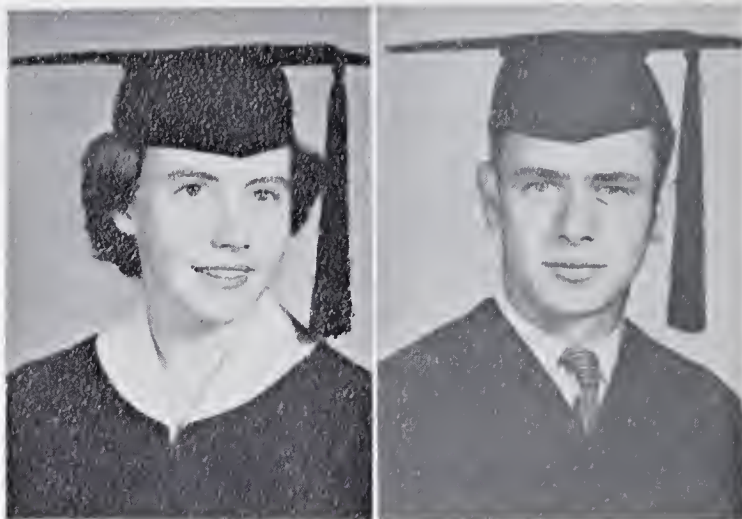


FRANCES GAIL MOORE

Beta Club 3, 4, Secretary 4; FHA Club 1, 2, 3, 4, Vice President 4; Tri-Hi-Y 1, 2, 3, 4, Vice President 2; Glee Club 3, 4; Basketball 1, 2; 4-H Club 1, 2; Class Officer, Reporter 3; Windswept Echoes Staff, Assistant Managing Editor 3; Girl Scouts 1; Cheerleader 4; Library Club 4; Patrol Squad 1; Superlative.

RAYMOND GRAY MILLER

FFA 1, 2, 3, 4; Substitute Bus Driver 2, 3; Regular Bus Driver 4; 4-H Club 1, 2; Hi-Y Club 4; Echo Staff 4; Boy Scouts 1, 2; Basketball 1; Superlative.



BETTY JANE O'NEAL

Beta Club 3, 4; Tri-Hi-Y 1, 2, 3, 4; FHA 2, 3; Girl Scouts 1; Basketball 1, 2, 3, 4, Co-Captain 3; Softball 1, 2; Girls' Sheriff 4; 4-H Club 1, 2, 3, 4, Vice President 4; Class Officer, Assistant Secretary 1; Library Club, 2, 3, 4, Secretary 3; Superlative.

DONALD GRAY O'NEAL

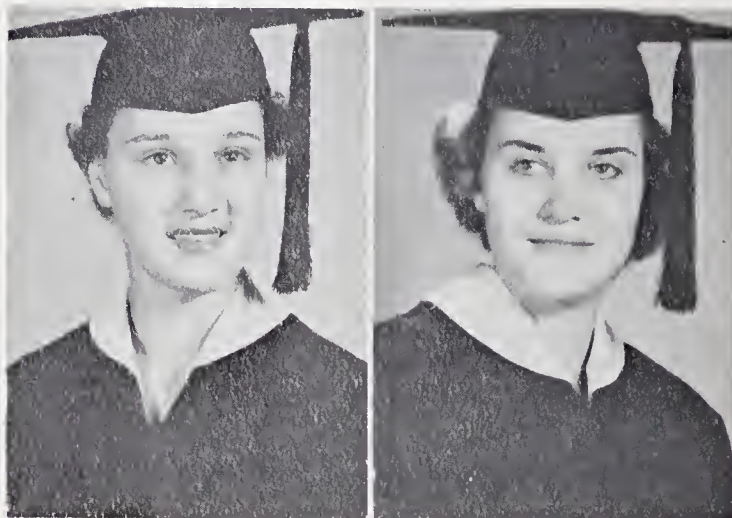
FFA Club 1, 2, 3, 4, Treasurer 4; Junior Varsity Basketball 2, 3; Scorekeeper 4; Boy Scouts 1, 2, 3; Substitute Bus Driver 4; Junior Varsity Basketball 3.

ROXIE ALICE O'NEAL

4-H Club 1, 2, 3, 4, President 4; FHA Club 1, 2, 3, 4, Song Leader 4; Tri-Hi-Y 1, 2, 4; Basketball 1, 2, 3, 4; Library Club 3, 4; Beta Club 3, 4; Glee Club 3; Bus Secretary 4; Sanitary Squad 4; Superlative; 12 Years' Perfect Attendance.

MARTHA ALDA PILSON

FHA 1, 2, 3, 4; Basketball 1, 2, 3, 4, Manager Junior Varsity 2, 3, 4, Co-Captain 2; Softball 1; 4-H Club 1, 2, 3; Tri-Hi-Y 1, 2, 3, 4; Girl Scout 1, Society Program Committee 4; Beta Club 3, 4.





AVANELLE JOHNSON POINDEXTER
Beta Club 3, 4, Vice President 4; Tri-Hi-Y Club 1, 2, 3, 4, Junior Treasurer 2, Program Committee 2; 4-H Club 1; Glee Club 2, 3, 4, Vice President 4; Echo Staff, Co-Editor 4; Class Officer, Treasurer 2; Chaplain 1; Honor Council 2, 3, 4; Softball 1, 2; Basketball 1, 2; Perfect Attendance Certificate 3, 4; Honor Roll 2; Golden Honor Roll 3, 4; Marshal 3, 4.

KATIE JANE SIMPSON
Tri-Hi-Y 1, 2, 3, 4, Assistant Song Leader 3; FHA Club 1, 2, 3, 4, President 4; Library Club 3, President 3; Student Government Officer, Assistant Girls' Sheriff 4; Basketball 1, 2, 3, 4, Alternate Captain 4; Superlative

JO ANN RING
Beta Club 3, 4, Treasurer 4; Tri-Hi-Y Club 1, 2, 3, 4, Secretary Junior Club 2; FHA Club 1, 2, 3, 4; 4-H Club 1; Glee Club 2, 3, 4, President 4; Echo Staff, Typist 4; Windswept Echoes Staff 3, 4, Junior Business Manager 3, Co-Editor 4; Society Officer, Program Committee 4; Chaplain 4; Softball 1, 2; Basketball 1, 2; Student Government Officer, Secretary 4; Cheerleader 4; Typing Award 3; Honor Roll 2, 3, Golden Honor Roll 4; Marshal 3, 4.

RAY SIMPSON
FFA 1, 2, 3, 4, Reporter 4; Student Council Officer 4; Substitute Bus Driver 3, 4; Superlative.



MABEL FRANCES SHINAULT
4-H Club 1, 2, 3; Beta Club 4; Marshal 3, 4; Echo Staff, Co-Editor 4; Honor Roll 1, 2, 3, 4; Bus Secretary 4.

SHIRLEY ANN SPEAKS
Tri-Hi-Y 1, 2, 3, 4, Program Committee 2; Girls Scouts 1; FHA Club 1, 2, 3, 4; Basketball 1, 2, 3, 4; 4-H Club 1, 2, 3, 4, Chaplain 4; Student Council 3, 4, Library Club 2, 3, 4, Treasurer 3; Superlative.



CLIFFORD MARTIN STANLEY
Superlative.

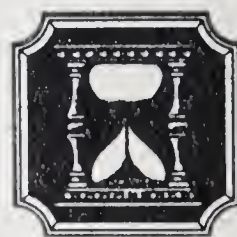
KAY FRANCES STANLEY
Class Officer, Treasurer 1, Vice President
2, Assistant Secretary 3, Secretary-Treas-
urer 4; Beta Club 3, 4, President 4; Tri-
Hi-Y Club 1, 2, 3, 4; FHA Club 1, 2, 3, 4,
Historian 4; 4-H Club 1; Library Club 3;
Girl Scouts 1; Softball 1, 2; Basketball 1,
2; Honor Council 3; Student Government
Officer, Assistant Secretary 4; Echo Staff,
Business Manager 4; Superlative.

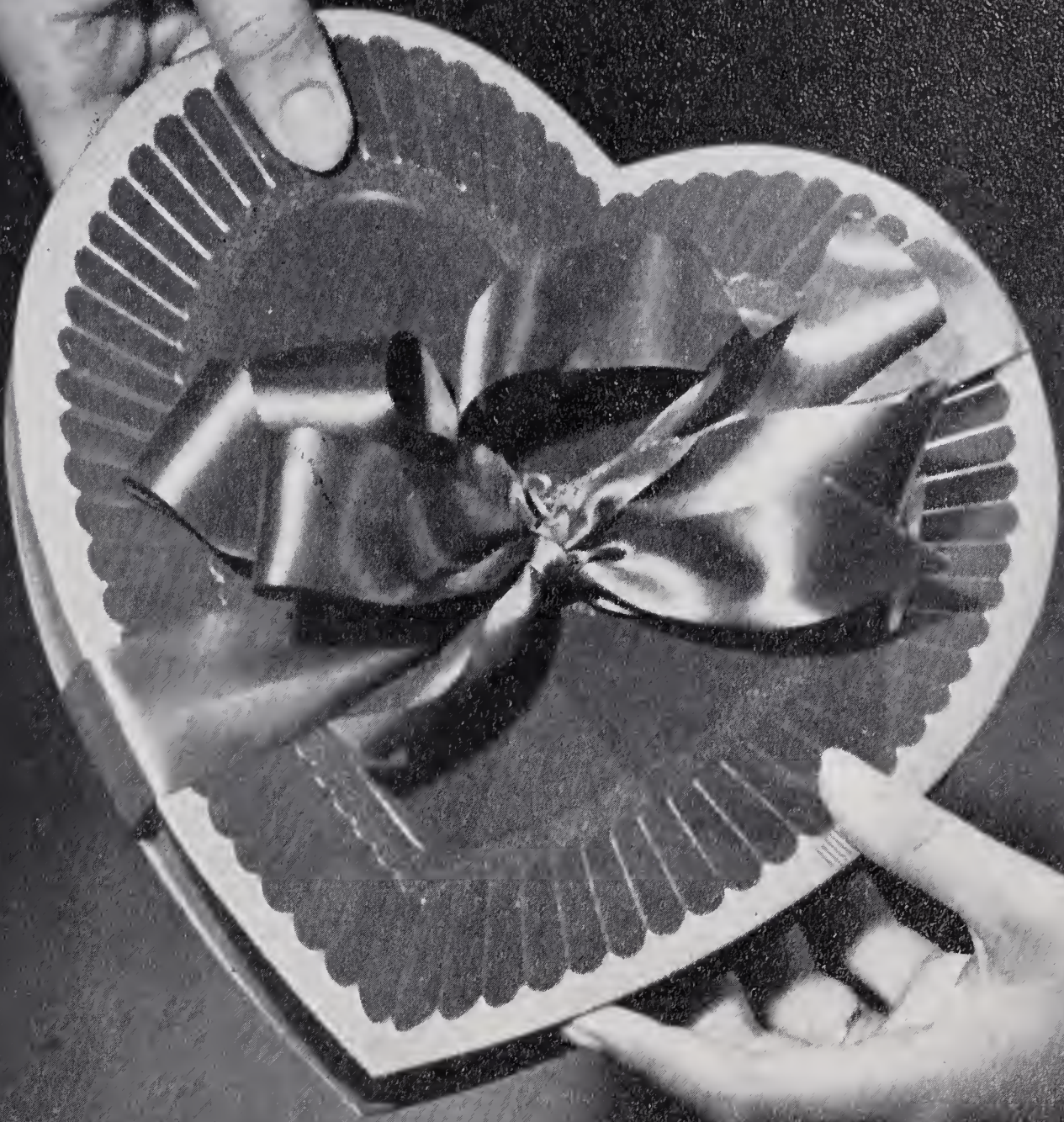


JEWELL CHRISTINE TAYLOR
Society Officer 4; 4-H Club 1, 2, 3; Beta
Club 4; Glee Club 3; Echo Staff 4; Ass-
sembly Squad 4; Honor Roll 1, 2, 3, 4;
Marshal 3; Superlative.

BERTHA JEWELL VEABLE
Tri-Hi-Y Club 2, 4; Glee Club 2, 3, 4;
Society Officer, Assistant Secretary 4;
Beta Club 3, 4; FHA Club 1, 3; Windswept
Echoes Staff, Business Manager 4; Echo
Staff, Social Editor 4; Honor Roll 2, 3, 4;
Marshal 3, 4; Typing Award 3; Superla-
tive.

CAROL LEE VENABLE
Class Officer, President 1; FHA Club
1, 2, 3, 4; Tri-Hi-Y Club 1, 2, 3, 4;
President 4; Glee Club 2, 3, 4; Music Club
1; Basketball 1, 2; Softball 1; Cheer-
leader.





Favorites

SUPERLATIVES



NANCY HARBOUR, ARNOLD DOBY
Best All Round



SHIRLEY SPEAKS
Prettiest
JARVIS FLIPPIN
Most Handsome



BETTY JANE O'NEAL, ARNOLD DOBY
Most Athletic



SUPERLATIVES

KAY STANLEY, BRENT HYATT
Most Intellectual



JANICE LAYNE
BILLY J. MARION
Most Popular



BARBARA HUDSON, RAYMOND MILLER
Wittiest



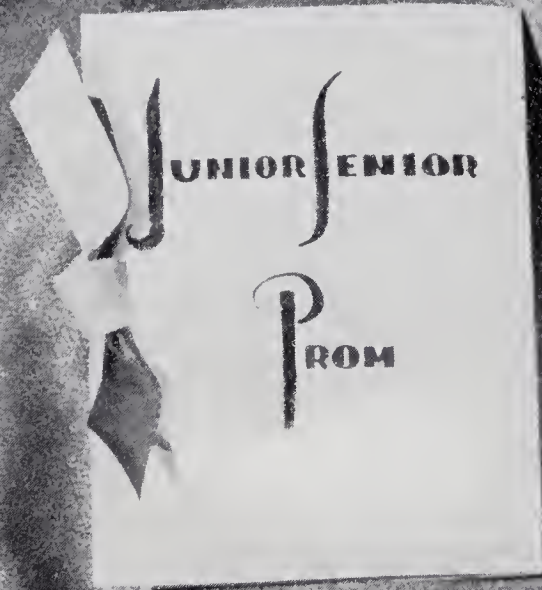
STATISTICS

CLASS COLORS - - - - - American Beauty Red and White
CLASS FLOWER - - - - - American Beauty Rose
MOTTO - - - - - Doubt Whom You Will, But Never
Doubt Yourself.

"Bovee"

SUPERLATIVES

ARNOLD DOBY - - - - - Best All Around
NANCY HARBOUR
BRENT HYATT - - - - - Most Intellectual
KAY FRANCES STANLEY
BILLY MARION - - - - - Most Popular
JANICE LAYNE
JARVIS FLIPPIN - - - - - Best Looking
SHIRLEY SPEAKS
RAYMOND MILLER - - - - - Wittiest
BARBARA HUDSON
ARNOLD DOBY - - - - - Most Athletic
BETTY O'NEAL
BRENT HYATT - - - - - Most Likely to Succeed
LOUISE HENSLEY
O. J. DANLEY - - - - - Neatest
SHELBA JOHNSON
RAY SIMPSON - - - - - Best Sport
BETTY O'NEAL
JARVIS FLIPPIN - - - - - Most Courteous
LOUISE HENSLEY
BILLY MARION - - - - - Best Personality
JEWEL TAYLOR
AUBREY FOWLER - - - - - Quietest
VERSIE MARION
WAYNE KEY - - - - - Cutest
BERTHA VENABLE
ARNOLD DOBY - - - - - Most Talented
KATIE SIMPSON
CLIFFORD STANLEY - - - - - Most Serious Minded
LILLIE JOHNSON
GRAY O'NEAL - - - - - Most Dependable
KAY FRANCES STANLEY
HOMER HALL - - - - - Most Studious
LILLIE JOHNSON
RAYMOND MILLER - - - - - Most Cheerful
ROXIE O'NEAL
HOMER HALL - - - - - Most Industrious
NANCY HARBOUR
RAY SIMPSON - - - - - Friendliest
FRANCES MOORE
WAYNE KEY - - - - - Biggest Flirt
DECIE KEY
O. J. DANLEY - - - - - Sweetest
KATIE SIMPSON

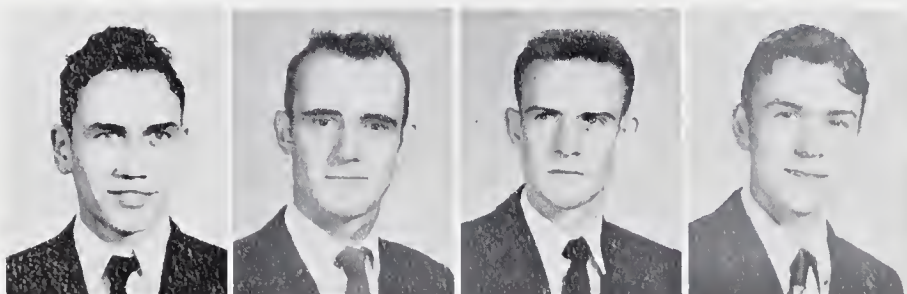


Juniors



DON KEY - - - - - President
 TED RING - - - - - Vice President
 SELVA JEAN KEY - - - - - Secretary

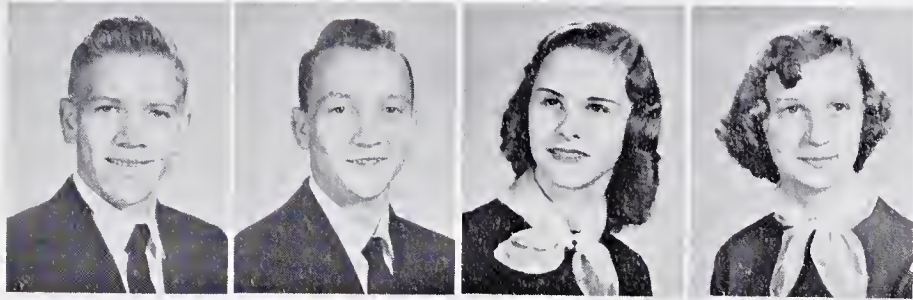
JUNIORS



HOWARD AYERS
 WILLIAM BATES
 JUNIOR BLEDSOE
 DALLAS BROWN



JUNIOR CALLAHAN
 SHIRLEY COE
 AVALINE COLLINS
 LORENE CUMMINGS



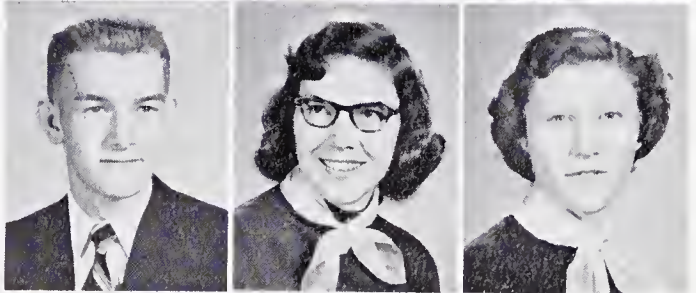
JIMMY DANLEY
LEONARD DANLEY

KAY DAVIS
LAWANA DAVIS

JEWEL RAY FLYNN
BETTY LOU HARDY
JOSEPHINE JACKSON



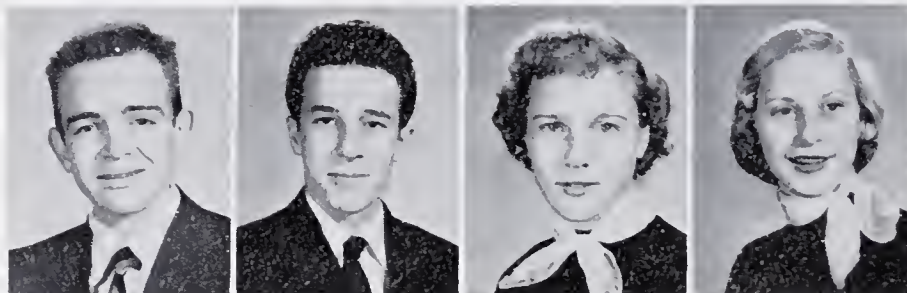
DON KEY
SELVA JEAN KEY
SENA MAE MARSH



GRAY MOORE
GLADYS PARKER
DON PHILLIPS



DON RACHELS
MOLLY REECE
RACHEL REID



JIMMY RIDDLE
TED RING

SHELBY SIMPSON
MARY SPEAKS



ELSIE STANLEY
CARL TOLBERT
JIMMY TUCKER

WAYNE TUCKER
JACKIE VENABLE
JEAN VENABLE

SYLVIA VENABLE
LURA JEAN WATSON
DON WHITAKER

HAROLD WHITAKER
JANE WOLFE
ROBERT WOOD





Junior High



SOPHOMORES

CLASS OFFICERS



Juanita Baker, Dora Dean Bates, Wayne Bowman, Molly Bruner, Phil Burrus, Peggy Childress, Carrol Coe, Ray Coe, Waldo Coe, Arlene Coe, Dallas Corder, Jewel Dean Creed, Lula Chrissman, Donald Culler, Barbara David, Rachel East, Herman Hall, Claudine Holyfield, Audrey Jenkins, Edsil Johnson, Betty Ann Jones, Imogene Key, Donald Ray Key, Faye Marion, Faye Martin, Betty Martin, Opal McHone, Louise Moser, Gray Moser, Ray Mosley, Jr., Jackie O'Neal, Geneva Palmer, Billy Ring, Bobby Shinault, Nancy Shore, Joyce Simpson, Clifford Simpson, Claude Snow, Ronald Stanley, Barbara Taylor, Dorothy Tucker, Curtis Venable, Joyce Wall, Bobby Wall, Palmer Whitaker, Arnold Whitaker, Franklin Wood, Gaynell Wolfe, Faye Wright. No pictures: Ronald Bowman, Jerry Boyles, Lois Cooke, Ethel Draughn, Tulah Johnson, Alma Wright, Iris Shelton.

FRESHMEN

CLASS OFFICERS

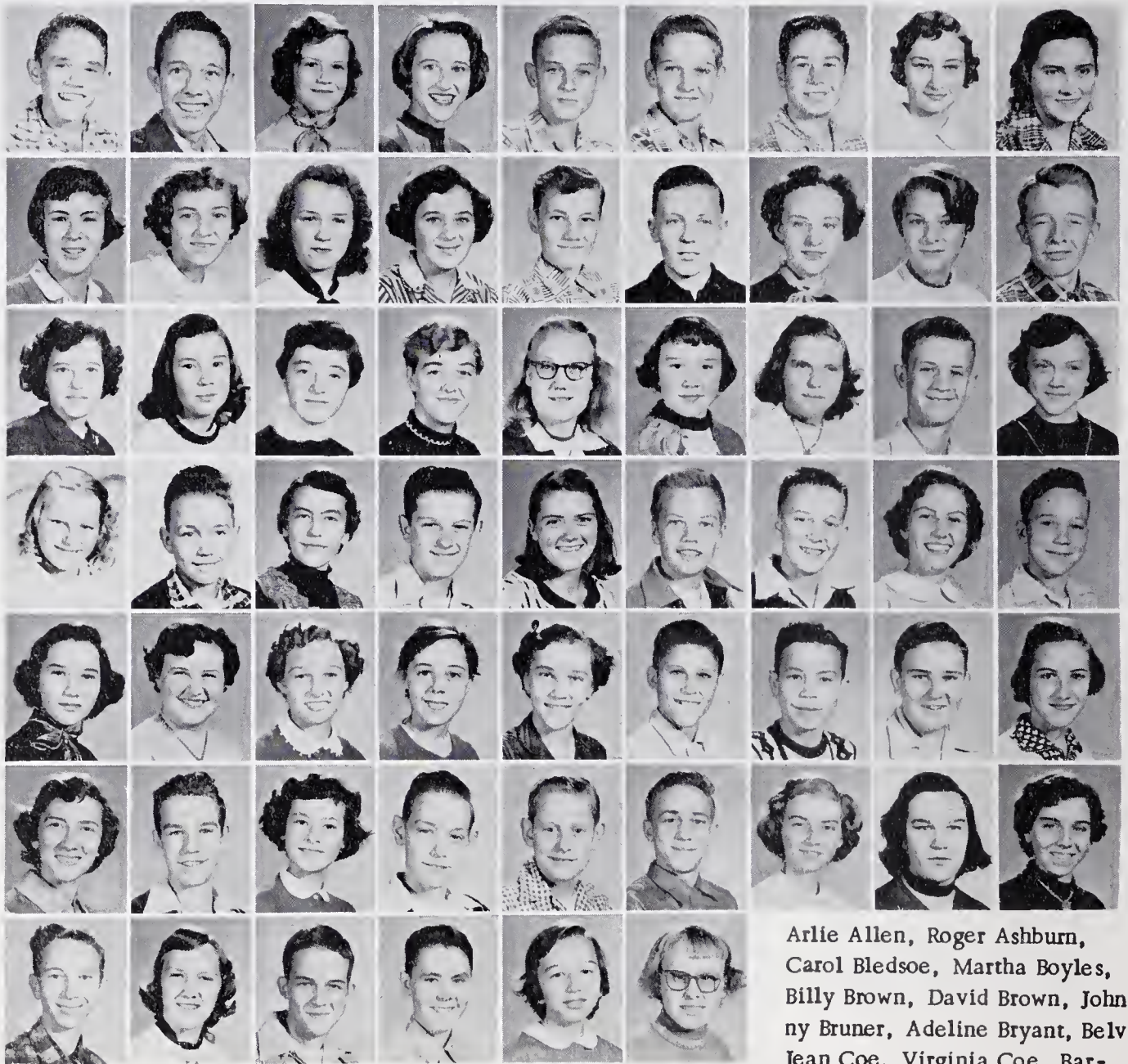


Ellwood Allen, Elva Allen, Dorothy Bledsoe, Gertrude Bledsoe, Peggy Brown, Regina Bullington, Johnson Chilton, Frances Cook, Janie Creed, Leonard Creed, Max Cummings, Fay Danley, Ray Danley, Tex Flippin, Don Flynn, Ann Fulk, Eugene Fulk, Joyce Hamlin, Jack Hardy, R. J. Hardy, Lois Hill, James Holyfield, Bonnie Hudson, Leonard Hutson, Lonnie Johnson, Glennice Key, J. W. Key, Lillian Lawson, Alma Marion, Bonnie Marsh, Jimmy Patterson, Larry Patterson, Linville Phillips, Donnise Quisenberry, Gray Riddle, Lorene Riggs, Patty Sechrist, Rebecca Shinault, Peggy Simpson, Phyllis Simpson, Joyce Smith, Ted Stanley, George Wall, Wallace Watson, Carolyn Whitaker, Luther Whitaker, Phillip Whitaker, Gail White. No picture: Florence Arrington, Clayton Bowman, Rufus Faulkner, James Holyfield, Rachel Robertson.

SUB-FRESHMEN

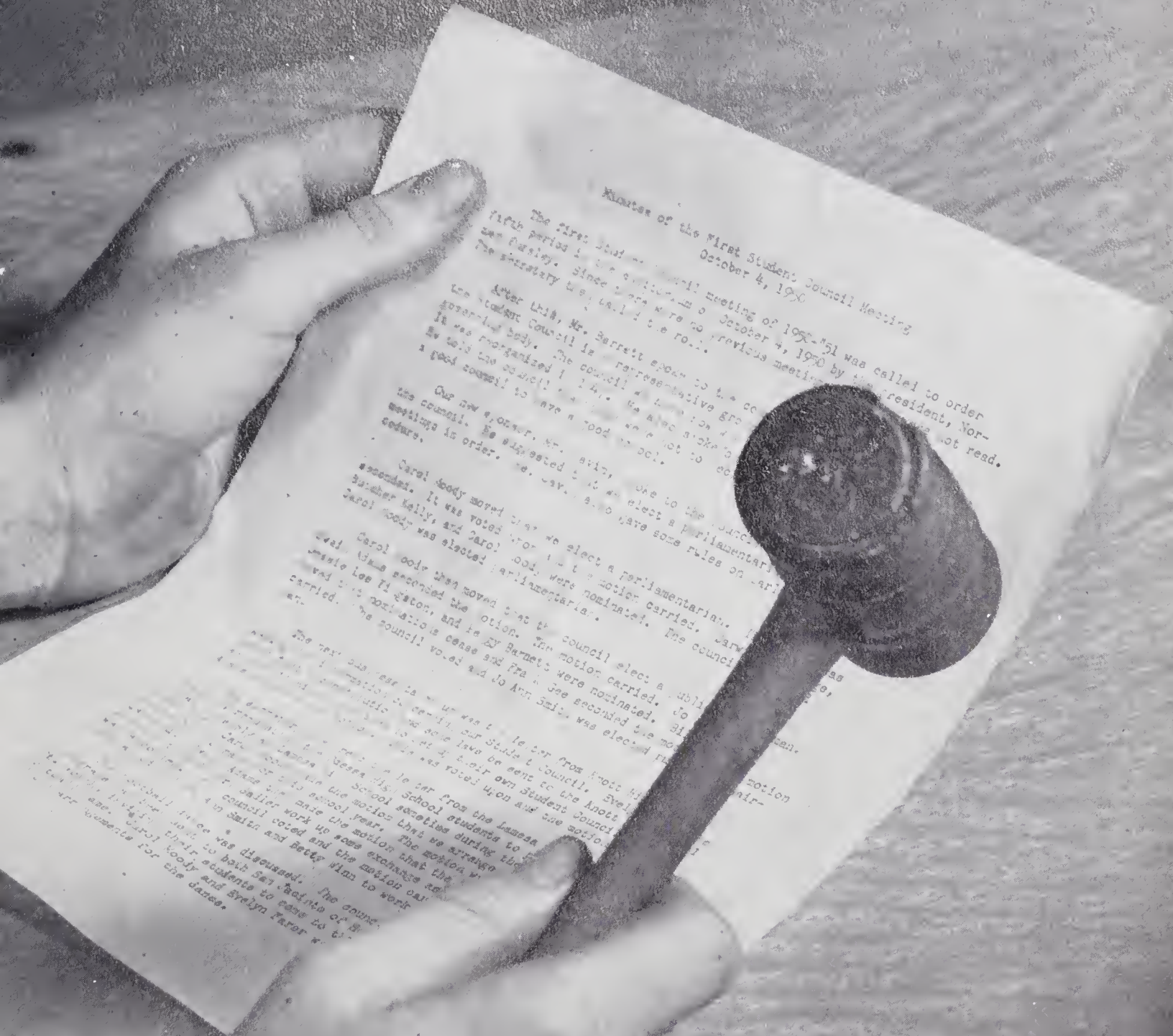
No picture: Dennis Michols,
Billy Scott, Irene Watson,
Allen Wright.

Eva Badgett
Carolyn Wood



Arlie Allen, Roger Ashburn,
Carol Bledsoe, Martha Boyles,
Billy Brown, David Brown, John-
ny Bruner, Adeline Bryant, Belva
Jean Coe, Virginia Coe, Bar-
bara Collins, Brenda Cook, Betty

Crissman, J. E. Creed, Wayne Cummings, Mary Frances Danley, Patty Sue Draughn, Loyd Flynn, Jr.,
Clara Lee Greene, Barbara Hall, Bonita Hardy, Maggie Mae Hardy, Beulah Hudson, Hilda Faye Hutson,
Lorene Hutson, Benny Johnson, Jackie Johnson, Judith Johnson, Larry Johnson, Polly Johnson, Billy Jones,
Myrtle Jones, Eugene Joyner, Earl Martin, Linda Kay McKinney, Jay Hugh Mosley, Janice Mosley, Jose-
phine Perkins, Louise Poindexter, Louise Riggs, Bonnie Shinault, Wilbur Shinault, Charles Simpson, Clay-
ton Simpson, Jo Ann Simpson, Polly Simpson, Brent Snow, Gay Snow, Kent Snow, Jimmie Speaks, J. C.
Stanley, Carole Tilley, Jo Nelle Venable, Beatrice Wall, Billy Wall, Jaye Wall, Max Wall, Willis Wat-
son, Jr., Peggy Whitaker, Annie Lee White.



Minutes of the First Student Council Meeting
October 4, 1950

The first Student Council meeting of 1950-51 was called to order by the president, Norman Harley, on October 4, 1950 by the president, Norman Harley. Since there were no previous meetings the secretary was called to the roll.

After this, Mr. Barrett spoke to the council. He stated that the Student Council is a representative governing body. The council should be organized in a way that it will be a good council to have in school.

Our new speaker, Mr. Barrett, spoke to the council. He suggested that we have some rules on our meetings in order. He suggested that we have some rules on our meetings in order.

Carol Hoody moved that we elect a parliamentarian. It was voted upon and the motion carried. Betty Finn, and Carol Hoody, were nominated. The council elected Betty Finn as parliamentarian.

Carol Hoody then moved that the council elect a public address man. The motion carried. Betty Finn, and Carol Hoody, were nominated. The council elected Betty Finn as public address man.

The next business is to elect a secretary. Betty Finn, and Carol Hoody, were nominated. The council elected Betty Finn as secretary.

There was a motion to let the James School students to have their own Student Council. The motion was carried. Betty Finn, and Carol Hoody, were nominated. The council elected Betty Finn as secretary.

Organizations

BETA CLUB

JANUARY 1955

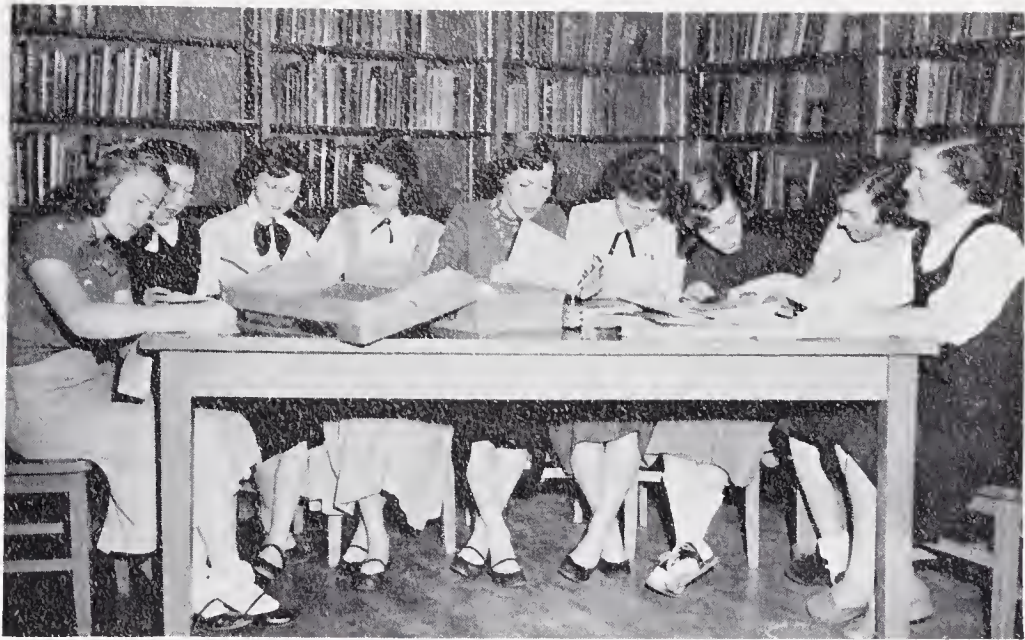


OFFICERS

President, Kaye Stanley; Vice President, Avanelle Johnson Poindexter; Secretary, Frances Gail Moore; Treasurer, Jo Ann Ring.



Josephine Jackson, Avaline Collins, Carolyn Key, Jean Venable, Jewel Ray Flynn, Nancy Harbour, Kaye Stanley, Mable Shinault, Roxie O'Neal, Jewel Taylor, Barbara Hudson, Molly Reece, Mrs. Graham, Sponsor; Shirley Coe, Kaye Davis, Gladys Parker, Homer Hall, Betty Jane O'Neal, Arnold Doby, Alda Pilson, Brent Hyatt, Selva Jean Key, Howard Ayers, Lawana Davis, Sylvia Venable, Jane Wolfe, Billy Jay Marion, Frances Gail Moore, Palmer Whitaker, Betty Jean Coe, Bertha Jewell Venable, Carol F. Dotson, Shelba Johnson, Ray Mosely, Jr., Jo Ann Ring, Avanelle J. Poindexter, Joyce Wall.



WINDSWEPT ECHOES STAFF

Jo Ann Ring - - - - - Co-Editors

Avanell Poindexter

Business Manager, Bertha Jewell Venable; Junior Business Manager,
Kaye Davis; Circulation Manager, Shelba Johnson; Photographic Editor,
Jane Wolfe; Faculty Advisor, Mrs. Graham.



ECHO STAFF

Mabel Shinault - - - - - Co-Editors

Betty Jean Coe

Kaye Stanley - - - - - Business Manager

Jo Ann Ring, Bertha Jewell Venable, Arnold Doby, Alda Pilson, Avanell Poindexter,
Carolyn Key, Janice Layne, Brent Hyatt, Jewell Taylor, Raymond Miller, Homer Hall,
Barbara Hudson, Faculty Advisor, Mr. Graham.

TRI-HI-Y CLUB



OFFICERS

President, Carol Lee Venable; Vice President, Betty Jean Coe; Program Committee, Avanell Poindexter, Josephine Jackson; Sponsor, Mrs. Jones.



Carol Lee Venable, Shelba Johnson, Frances Moore, Nancy Harbour, Sylvia Venable, Jane Wolfe, Jo Ann Ring, Jean Venable, Betty Jane O'Neal, Kaye Stanley, Janice Layne, Avanelle Poindexter, Shirley Coe, Josephine Jackson, Alda Pilson, Mrs. Jones, Lawana Davis, Elsie Stanley, Selva Jean Key, Rachel Reid, Jackie Venable, Roxie O'Neal, Betty Jean Coe, Bertha Jewell Venable.

HI-Y CLUB



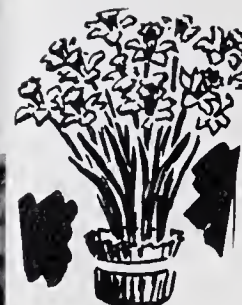
OFFICERS

Brent Hyatt - - - - - President
 Billy Bledsoe - - - - - Vice President
 Billy J. Marion - - - - - Secretary
 Don Key - - - - - Treasurer



Ted Ring, Brent Hyatt, Arnold Doby, Billy Jay Marion, Don Key, Junior Bledsoe, Raymond Miller, Howard Ayers.

F.H.A.

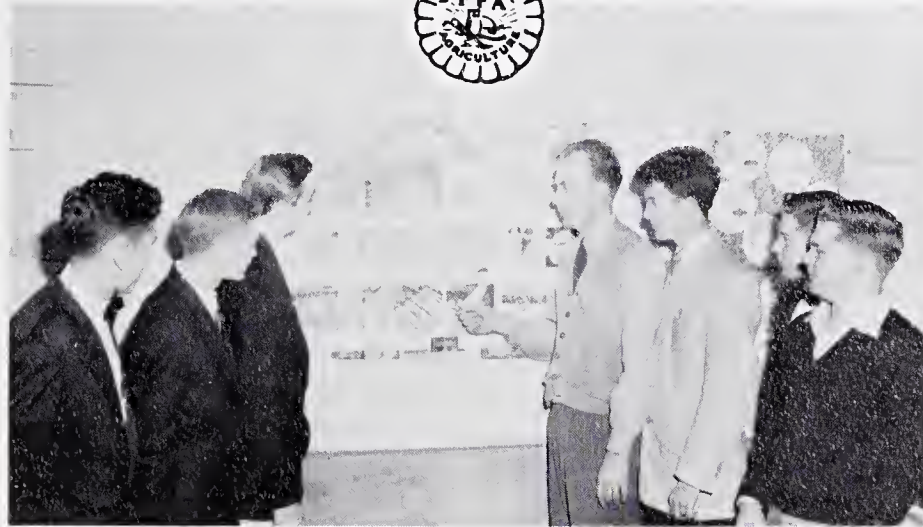


OFFICERS

President, Katie Simpson; Vice President, Frances Moore; Secretary, Elsie Stanley; Treasurer, Selva Jean Key; Parliamentarian, Janice Layne; Historian, Kay Stanley; Reporter, Jane Wolfe; Song Leader, Roxie O'Neal.

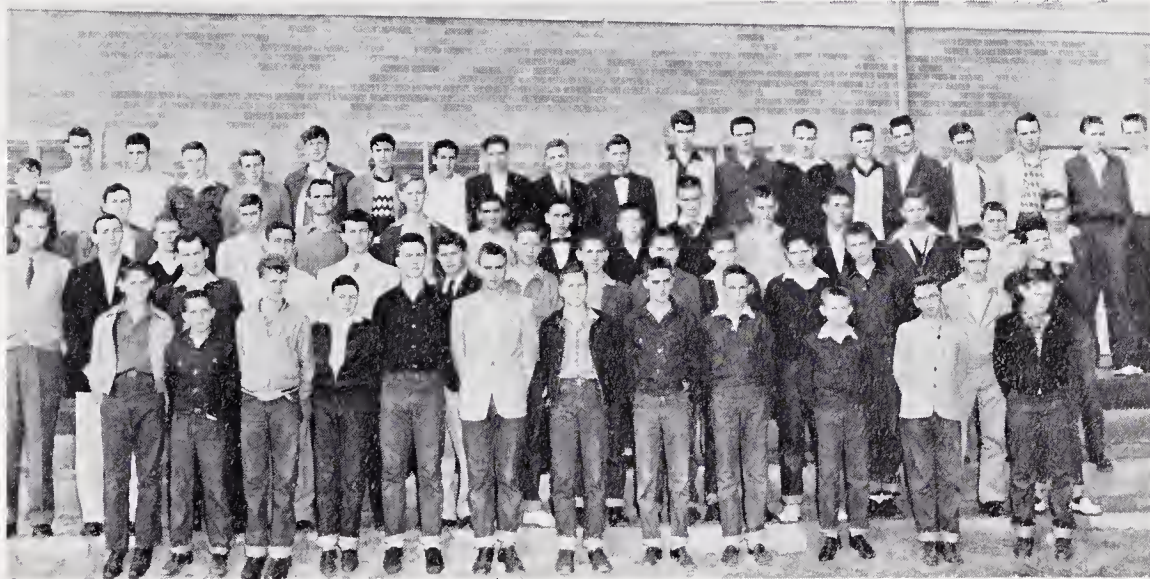


First row: Roxie O'Neal, Frances Moore, Katie Simpson, Kaye Stanley. Second row: Donnies Quesinberry, Peggy Childress, Janie Creed, Phyllis Simpson, Francis Cook, Gail White, Faye Danley, Glennice Key, Jackie O'Neal. Third row: Mrs. Stanley, Louise Moser, Regina Bulington, Josephine Jackson, Rebecca Shinault, Joyce Smith, Arlene Coe, Carolyn Whitaker, Nancy Shore, Lois Hill, Shirley Coe, Rachel Reid, Lura Jean Watson, Lawana Davis, Sylvia Venable, Audrey Jenkins, Peggy Simpson, Betty Ann Jones, Kaye Davis, Shirley Speaks, Gaynell Wolfe, Decie Key, Jean Venable, Joyce Simpson, Jane Wolfe, Molly Reece. Not pictured: Nancy Harbour, Avanelle Poindexter, Jo Ann Ring.



OFFICERS

President, Billy Jay Marion; Vice President, Howard Ayers; Arnold Doby, Secretary; Gray O'Neal, Treasurer; Wayne Key, Sentinel; Ray Simpson, Reporter; J. M. Davis, Advisor.

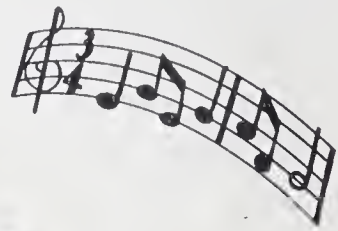


First row: Jack Hardy, Ray Danley, Gray Riddle, Wallace Watson, Tex Flippin, J. W. Key, R. J. Hardy, Edsil Johnson, Leonard Hutson, Max Cummings. Second row: J. M. Davis, Arnold Doby, Gray Moore, Raymond Miller, Billy Jay Marion, Jarvis Flippin, George Wall, Jimmie Patterson, Ted Stanley, Leonard Creed, Eugene Fulk, Lonnie Johnson, Gray Watson, Linville Phillips. Third row: Palmer Whitaker, Ray Simpson, Aubrey Fowler, William Bates, Luther Whitaker, Don Whitaker, Howard Ayers, Billy Ring, J. D. Riddle, Don Key, Jerry Boyles, Ronald Stanley, Bobby Shinault, Wayne Bowman. Fourth row: Curtis Venable, Bobby Wall, Junior Callahan, Claude Snow, Jimmie Jucker, Don Phillips, Dallas Brown, Don Flynn, Robert Wood, Gray O'Neal, Wayne Key, Don Ray Key, Junior Bledsoe, Clifford Simpson, Junior Moseley, Johnson Chilton, Arnold Whitaker, Waldo Coe, Herman Hall, Clifford Bowman.



GLEE CLUB

President, Jo Ann Ring; Vice President, Avanelle Poindexter; Secretary, Jean Venable. First row: Gail White, Peggy Childress, Audrey Jenkins, Louise Moser, Phyllis Simpson, Ann Fulk, Donnies Quensinberry. Second row: Gaynell Wolfe, Josephine Jackson, Lawana Davis, Kaye Davis, Molly Reece, Sena Mae Marsh, Molly Bruner, Carolyn Whitaker, Frances Moore, Lily Johnson. Third row: Mrs. Holyfield Accompanist; Jo Ann Ring, Avanelle Poindexter, Bertha Jewell Venable, Betty Coe, Joyce Smith, Rebecca Shinault, Janice Layne, Jean Venable, Carol Lee Venable, Barbara Hudson, Jane Wolfe, Mrs. Graham, Director.





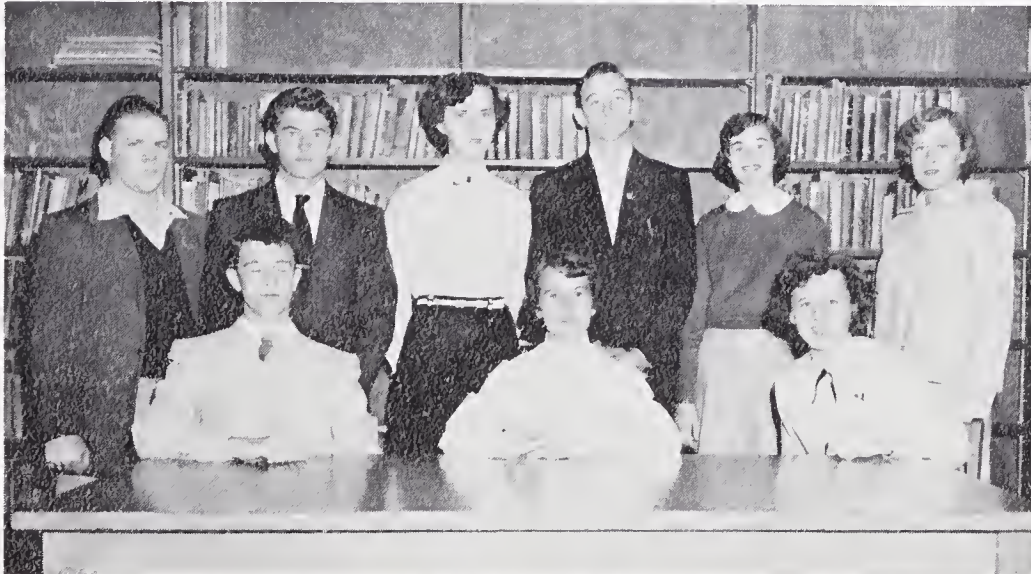
4-H CLUB OFFICERS

Senior

Roxie O'Neal - - - - - President
 Betty Jane O'Neal - - - - - Vice President
 Decie Key - - - - - Secretary

Junior

Ann Key - - - - - President
 Lois Doby - - - - - Vice President
 Fran Bowman - - - - - Secretary



STUDENT GOVERNMENT OFFICERS

Nancy Harbour - - - - - President
 Billy Jay Marion - - - - - Vice President
 Jo Ann Ring - - - - - Secretary
 Ray Simpson, Boys' Sheriff; Jarvis Flippin, Assistant Boys' Sheriff;
 Arnold Doby, Assistant Boys' Sheriff; Betty Jane O'Neal, Girls' Sheriff;
 Kaye Stanley, Assistant Girls' Sheriff; Katie Simpson, Assistant Girls'
 Sheriff.

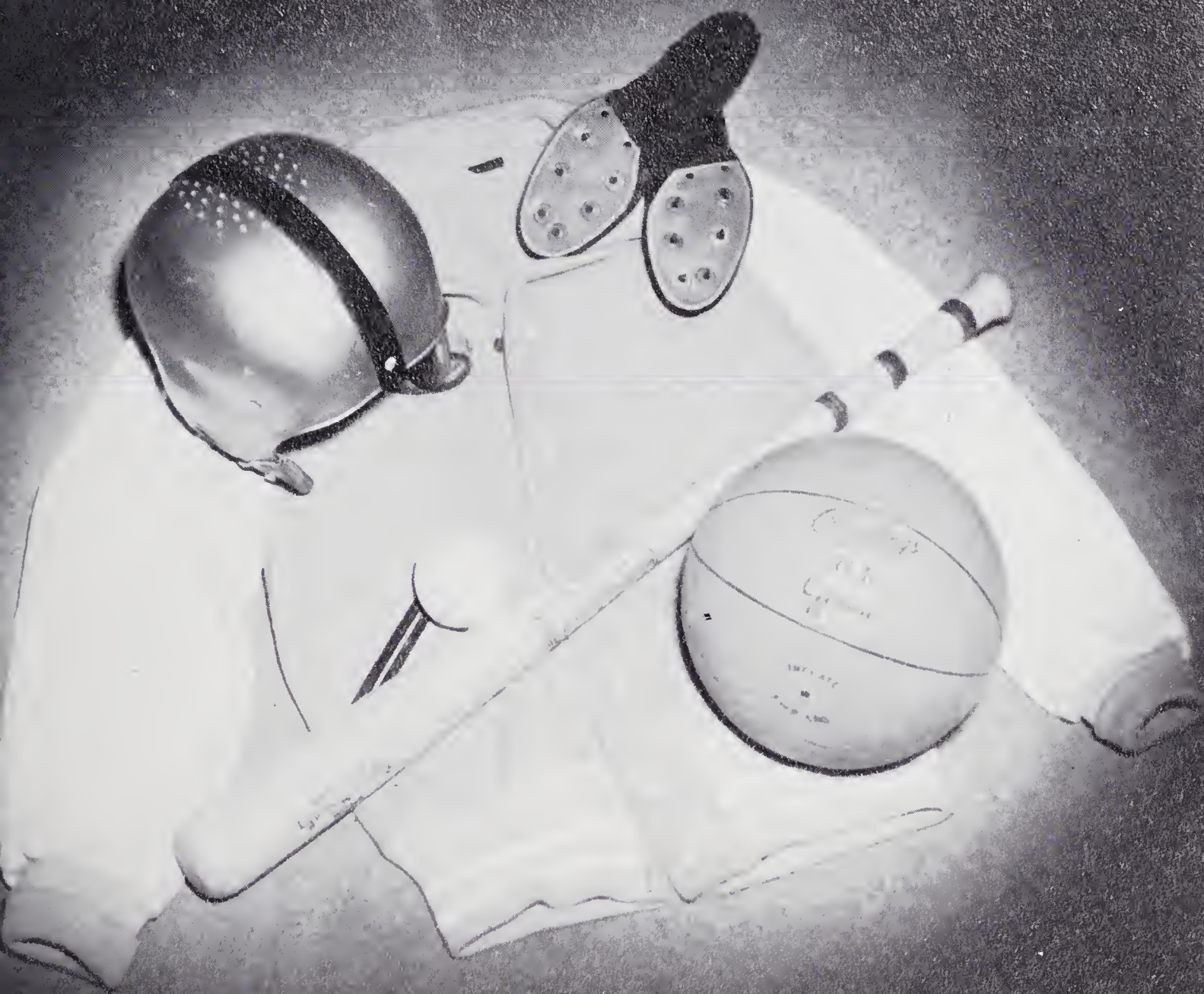


KAYE DAVIS
Miss Copeland 1955



MARSHALS

Nancy Harbour, Chief; Bertha Jewel Venable, Shelba Jean Johnson, Jo Ann Ring, Avanelle Poindexter, Mabel Shinault, Billy Jay Marion, Arnold Doby, Brent Hyatt.



Athletics



CHEERLEADERS

Chief - Janice Layne

Jo Ann Ring, Jean Venable, Frances Moore, Jane Wolfe, Elsie Stanley,
Carol Lee Venable.

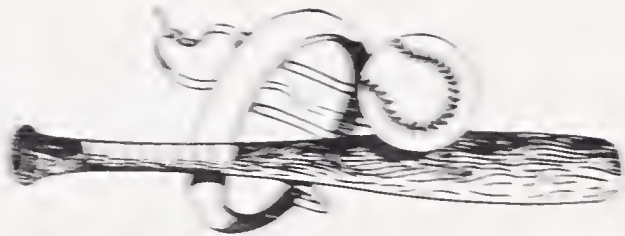




BASEBALL TEAM

First row: Jarvis Flippin, Don Key, Harold Dory, William Bates, Billy Hedcoe, Jimmy Dean Riddle, Dallas Brown.

Second row: Gray Riddle, Don Whitaker, Johnson Chilton, Jimmy Patterson, Ray Mosely, Jr., J. W. Key, Mr. Vance, Coach.





BOYS' BASKETBALL

Captain, Arnold Doby; Manager, Bill Ring, First row: Ray Mosely, Jr., Jimmy Deane Riddle, Billy Bledsoe, Arnold Doby, Don Whitaker, Don Key, Brent Hyatt, William Bates. Second row: Mr. Nance, Coach; Billy Ring, Manager; Mr. Bledsoe, Coach.



BOYS' JUNIOR VARSITY

First row: Eugene Fulk, Gray Riddle, Tex Flippin, J. W. Key. Second row: Ray Mosely, Jr., Jimmy Stanley, Lonnie Johnson, Larry Patterson; Coaches, Bledsoe and Nance.



GIRLS' BASKETBALL

Captain, Nancy Harbour; Manager, Peggy Simpson. First row: Selva Jean Key, Mary Speaks, Decie Key, Alda Pilson, Betty Jane O'Neal, Joyce Simpson, Katie Simpson, Rachel Reid, Roxie O'Neal. Second row: Peggy Simpson, Faye Danley, Glenice Key; Mr. Bledsoe, Coach; Frances Cooke, Betty Ann Jones, Nancy Harbour.

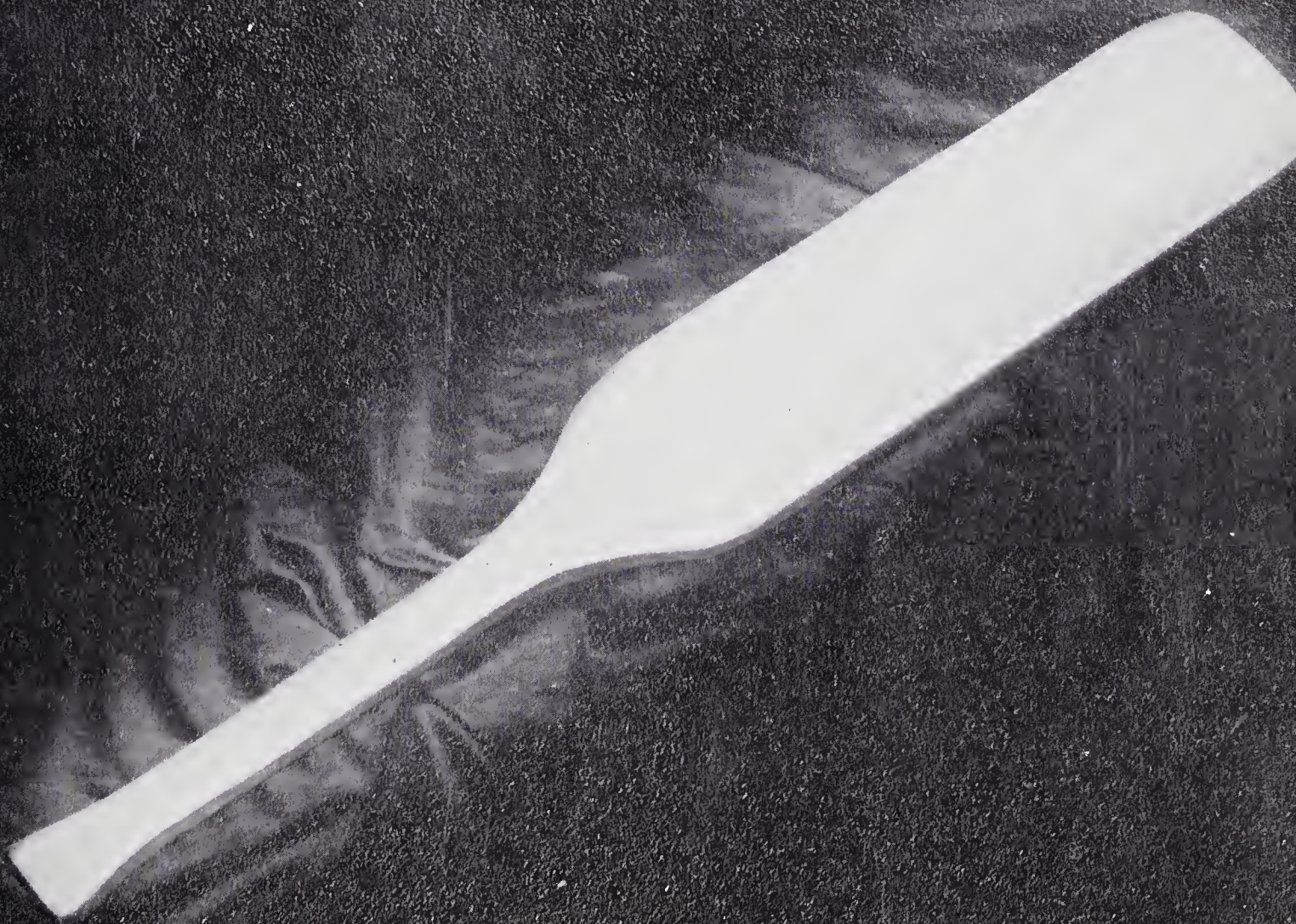


GIRLS' JUNIOR VARSITY

First row: Glenice Key, Nancy Crissman, Jackie O'Neal, Selva Jean Key, Rachel Reid, Mr. Bledsoe, Coach. Second row: Faye Danley, Frances Cooke, Betty Ann Jones, Faye Martin, Roxie O'Neal.



Avanell Olin

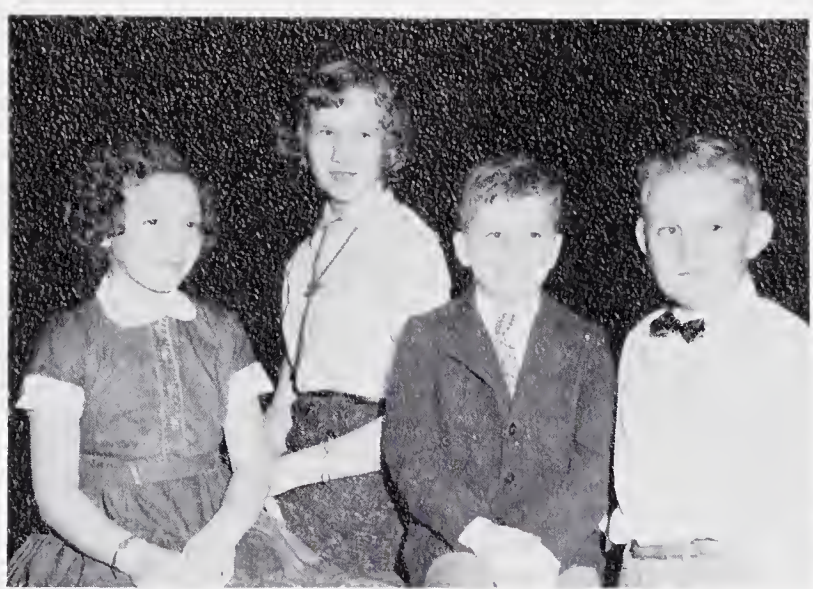
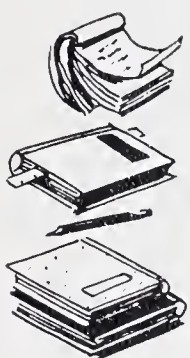


Elementary



ELEMENTARY FACULTY





ELEMENTARY KINGS AND QUEENS

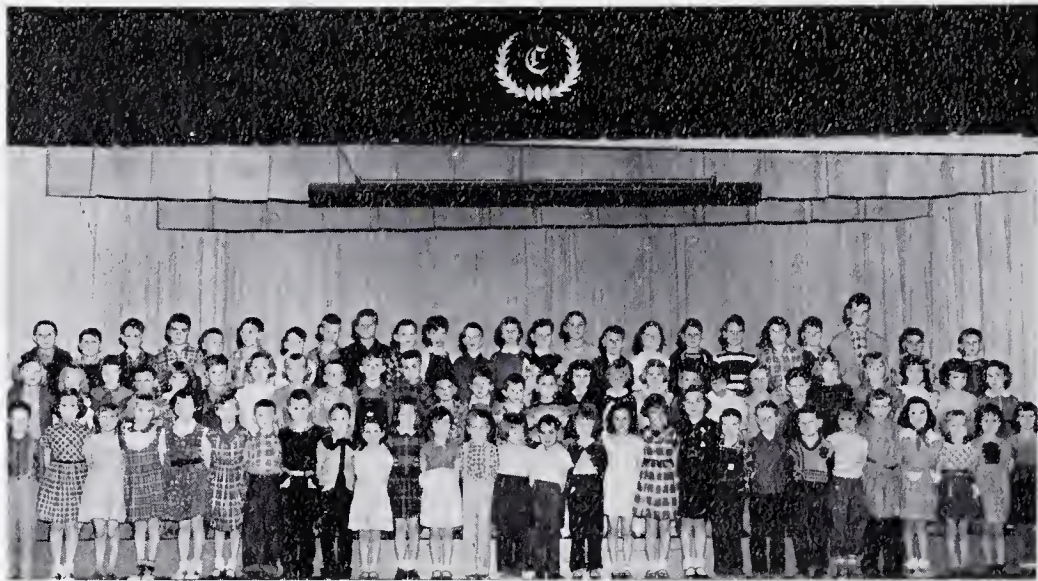
JEANETTE ATKINS - FAYE WALL

Queens

JIMMY CECIL RING - MITCHELL CUMMINGS

Kings





MRS. BESSIE SMITH - - - - - First Grade
 MRS. ORIN NANCE - - - - - First Grade
 MRS. CLARA GREEN - - - - - Second Grade



MRS. ALMA HOLYFIELD - - - - - Second Grade
 MISS MARTHALENE DAVIS - - - - - Third Grade
 MRS. ORA BURRUS - - - - - -Third and Fourth Grades





MRS. MATHA GRAHAM - - - - - Fourth Grade
 MRS. IDA TAYLOR - - - - - Fifth Grade
 MRS. ANNE BURRUS - - - - - Fifth Grade



MRS. GRACE SHINAULT - - - - - Sixth Grade
 MRS. BEULAH PERKINS - - - - - Seventh Grade
 MR. TOLAR HAYNES - - - - - Seventh Grade



LARGE



OR



SMALL

WE WELCOME YOUR ACCOUNT

The
SURRY COUNTY
Loan AND Trust Company

There Are Larger Banks But None Safer

Serving Every Banking Need of

This Area

Member Federal Deposit Insurance Corp.

Dobson

Mt. Airy

Cities Service

Cities Service

YORK
OIL COMPANY

Kerosene - Fuel Oil for the Home

Cities Service Tires, Tubes, and Batteries

Also

U. S. Royal Tires and Tubes

Phone 1640-J

White Plains, North Carolina

Herb-Jones
COMPANY

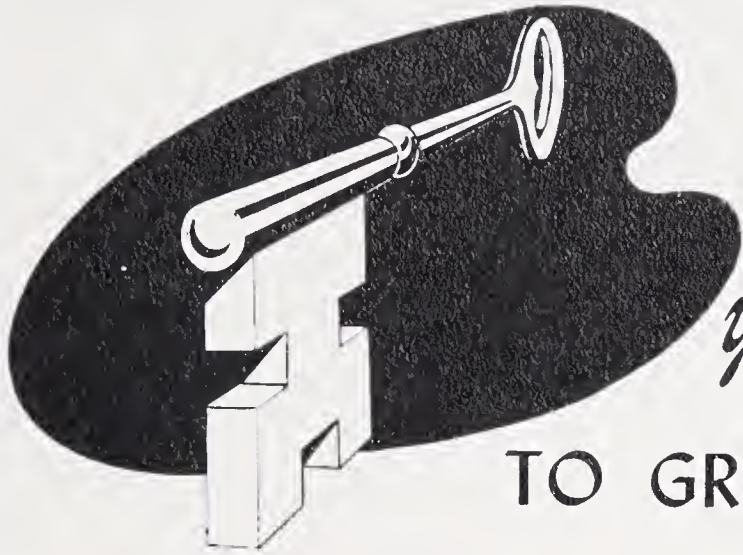
Rings - Invitations - Trophies - Medals

E. W. PADDISON

Representative

Mount Airy,

North Carolina



your key...

TO GREATER VALUES

Compliments of

Spainhour's

A Modern Department Store

Elkin,

North Carolina

William D. Weimar
INC.

Manufacturers of
Narrow Fabrics

Dobson, North Carolina



**SEE US
AND
Save**

**FARMERS
BANK**

Commercial
and Savings Bank

Pilot Mountain, N. C.

WPAQ

740 Kc.

Now 10,000
Watts

Mt. Airy, N.C.



HURRY!

Phone 921



R & G

**HARDWARE
CO.**

Dobson, N.C.

Cox

FUNERAL HOME

Ambulance Service
Telephone 54

Pilot Mountain, N. C.



CHATHAM

MANUFACTURING CO.

Elkin, North Carolina

"Chatham Makes Good
Blankets"



Compliments of

**THE
Bank OF Elkin**

Member of
Federal Deposit Ins.
Corporation

Elkin, N. C. - Jonesville, N. C.

BETTER GROCERIES



at

**PILOT
SUPER MARKET**

Fresh and Frozen Vegetables
Fresh Meats - Canned Foods
Bakery and Dairy Products

"Best for Less"
Phone 5

Pilot Mountain, N. C.

TAYLOR'S
GARAGE

Auto Repairing and Welding
Wrecker Service
Phone 492

Mt. Airy, North Carolina

CROSSINGHAM
TRACTOR COMPANY

Ford Tractors
Sales Service
Phone 192

Willow St. - Mt. Airy, N. C.

Compliments of
ELKIN
LUMBER CO.

Phone 68
Elkin, North Carolina

Blackwelder
FURNITURE CO.

"The Home of Quality
Furniture for Less Money"

Phone 549-550
Jonesville, North Carolina

R. E. FAW
and
SONS, INC.

Well Drilling and Pump
Sales and Service
Phone 70 P. O. Box 529

Elkin, North Carolina

PEPSI-COLA BOTTLING CO.



Phone 590
Elkin - Jonesville, N. C.

A Good Drug Store

Abernethy's

PHARMACY
The Rexall Store
Elkin, North Carolina

Phone
982

**IF IT'S GOOD FOOD
YOU WANT..**

Visit

HODGE CAFE



Short Orders - Sandwiches
Dobson, North Carolina



Compliments of
 BOYLES SHOE STORE
 "A Complete Family
 Shoe Store"

Mt. Airy, North Carolina

ALBERTY'S

STORE

Fertilizers - Feed
 Seed and Groceries
 Hardware, Gas and Oil
 Call 341
 Dobson, North Carolina

TODD-HARRIS TRACTOR CO.

Sales Services

Phone 911

Dobson, North Carolina

Compliments of

Renfro HOSIERY MILLS CO.

Mt. Airy, North Carolina



Phone
 1520

to

BOB'S CASH STORE
 810 Worth Street
 Mt. Airy, North Carolina

Johnson

FURNITURE CO.

Complete Home Furnishings
 Pianos - Sewing Machines
 Mt. Airy, North Carolina

SOUTHERN

PROPANE GAS CO., INC.

Bottled Gas and Appliances

Mt. Airy, North Carolina

C. W. Steele

JEWELER

Watches - Diamonds - Silverware

Chinaware - Glassware

Mount Airy, North Carolina

Elkin, North Carolina



For Comfort

Phone 521

Dobson, North Carolina

AUSTIN-BLACKWELDER FURNITURE CO., INC.

"The Home of Quality Furniture for Less Money"

LET US HELP



Your Money

BANK OF *Pilot*

Capital, Surplus, and
Undivided Profits
\$200,000

Pilot Mountain, North Carolina



REDDY'S

ABC'S ARE EASY

Always on the job
Backing you with power for
Convenience, comfort and
economy

DUKE POWER COMPANY

Serving the Piedmont Carolinas

Surry-Yadkin

ELECTRIC MEMBERSHIP CORP.

Dobson, North Carolina

"Owned by Those We Serve" Phone 411

GREENWOOD BROTHERS

"Esso Service"

Highway 268 Elkin, N. C.

Better Values

Compliments of
DIXIE
CLOTHING STORE

Mt. Airy, N. C.



SPARGER INSURANCE AGENCY
M. H. AND M. F. SPARGER
AND E. G. WYNNE, JR.

Fire, Automobile and Casualty
Lines

Phone 222
110 Franklin St. - Mt. Airy, N. C.

SAMS ESSO AND GROCERIES
Washing and Greasing



Complete Line of Groceries
Dobson, North Carolina

At

PENNEY'S

PAY CASH
PAY LESS

J.C. PENNEY COMPANY, INC.
Elkin, N.C.

Compliments of

SHORE FEED STORE

"Your Red Comb Dealer"

Pilot Mountain, N. C.

W. H. RING GROCERIES



AND
SAVE
AT

Pine Hill, North Carolina

PEELE & THOMPSON RADIO
AND APPLIANCE COMPANY

RCA, Zenith, Emerson
Stromberg Carlson
and Sylvania TV

Gibson Home Appliances
124 West Main St. Phone 362
Elkin, North Carolina

SURRY INSURANCE AGENCY

Dobson, North Carolina

J. T. THREATTE
Ass't Mgr.

W. FRANK COMER
Ass't Mgr.

For All Your Insurance Needs

Try Our Home Cooked Foods
at the

Pilot Inn

RESTAURANT
Curb Service

Route 52
Pilot Mountain, N. C.

MOODY FUNERAL HOME

Home of
Harrison Mutual Burial Assn.

Phone 65

WADE C. MOODY
DENNIS W. MOODY

Mount Airy, North Carolina

Campbell

MONUMENT WORKS

A Large Display to Select From
At All Times

Phone 1402
1197 S. Main Street
Mount Airy, North Carolina

BLUE RIDGE INSURANCE
AGENCY

Insurance for Every Need

R. P. JONES
E. C. COLINS

Phone 402
Mount Airy, North Carolina

GRAHAM-CLICK

5 - 10¢ STORE

Headquarters of
School Supplies

Elkin, North Carolina

F. W.
CHEVROLET COMPANY

Super Service
Twenty-Four Hour
Wrecker Service

Elkin, North Carolina



J. J. SHACKELFORD SHOE SHOP
440 N. Main Street
Mt. Airy, North Carolina

Welding and Machine Work
MERRITT MACHINE SHOP

Mill Supplies
Electrical Supplies

Pipe and Fittings

Mt. Airy, North Carolina

RING'S

PLUMBING AND ELECTRIC

Groceries
Chinchilla Ranch
Telephone 4-2586
At Copeland School

PLANTERS
&
JONES

WAREHOUSE COMPANY

Mt. Airy, North Carolina

MOSLEYS

WELDING AND REPAIR

Electric and Acetylene Welding

Tractor Farm Machinery

Lawn Mower Service

Phone 4-2131
Level Cross, North Carolina

YOUR SEARCH ENDS



Bruner's

SELF-SERVICE

For General Merchandise
Groceries and Heating
Oil

Phone 4-2781
Highway 268

W. E. MATTHEWS - CHARLES E. MATTHEWS - COY SIMMONS

PILOT GUANO COMPANY

Farm Machinery - Tobacco Curers and Fertilizers

Phone 147

Pilot Mountain, North Carolina

Compliments of

HOLCOMB BROTHERS

PLUMBING AND HEATING

Phone 254

Elkin, North Carolina

A. A. TAYLOR

Feeds, Seeds, and Groceries

Gulf Gasoline and Oils

Ararat, North Carolina
Rt. 1

Pine Hill

BEAUTY SHOP

A Complete Line of Beauty
Service

Highway 268

Siloam, North Carolina

24-Hour Ambulance Service

Jones

FUNERAL HOME

Phone 2 or 3

Mt. Airy, North Carolina

BRAY'S RECAPPING SERVICE

U.S. ROYAL

Phone 414

North South St.

Mt. Airy, North Carolina

Beasley CLEANERS

Phone 442

Dobson, North Carolina

DOBSON

DRUG STORE

Dependable Drugs
Reasonable Prices

Phone 121

Dobson, North Carolina



COPELAND
SERVICE
CENTER

Esso Products

Groceries and Sandwich Bar
Welcome

PILOT
MOUNTAIN MOTOR CO.

Authorized Sales and Service

SALES



SERVICE

Cars

Trucks

EXTRA!



CREED'S
SHOE SHOP

"We don't cobble them,
we make them like new."

Mt. Airy, N. C.

WALL and DAVIS
PONTIAC CO.



Telephone 204
Pilot Mountain, North Carolina

Armler
INC.

Manufacturers of
Knit Fabrics

Pilot Mountain, North Carolina

Compliments of

MR.
W. W. Norman

Pilot Mountain, North Carolina

GREGORY
CHEVROLET CO., INC..



Telephone No. 1
Pilot Mountain, N. C.

COLONIAL
Cleaners

"We Are Tops in
Dry Cleaning."

Phone 140-J
Pilot Mountain, N. C.

Compliments of
PILOT THEATRE
and

PILOT DRIVE-IN THEATRE

Pilot Mountain, North Carolina



We Grow by Helping Others Grow.



Phone 491

Mount Airy, North Carolina

Compliments of

**JONES
BAKERIES**

Distributors of
HOLSUM PRODUCTS

Winston-Salem, North Carolina

Dranghins

Texaco Gas and Oil
Washing and Greasing

Phone 711
Dobson, North Carolina

