



1957

THE WINDSWEPT ECHOES









Digitized by the Internet Archive  
in 2019 with funding from  
North Carolina Digital Heritage Center



*The Beta Club  
Presents:*

*1956-1957  
the  
Windswept Echoes*



*Copeland High School  
Route 2  
Dobson, North Carolina*

## *at Leisure*

Dances . . .  
Music . . .  
Drama . . .  
Clubs . . .  
Parties . . .



## *Through Music*

Piano . . .  
Glee Club . . .  
Chapel Singing . . .



## *in Games*

Physical Education . . .  
Sports . . . Monogram Club . . .  
Basketball . . .



## *With Christian Guidance*

In Chapel Devotions . . .  
Tri-Hi-Y . . . Hi-Y . . .  
Morning Home Room Lessons . . .



*We Build for Tomorrow*



*Each Year We Pay Tribute  
to Some Outstanding Individual*

*We  
Dedicate  
Our  
Book*

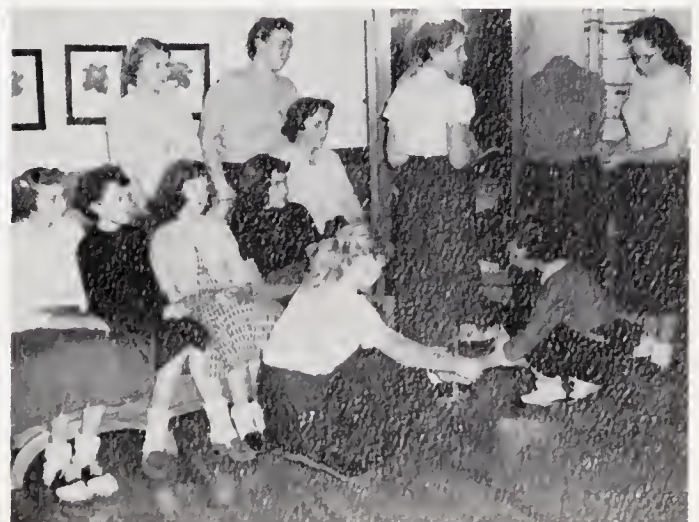


TO MRS. RUBY STANLEY

For . . .

- Serving as a guide to future homemakers -
- Introducing new methods and skills for daily tasks -
- Inspiring us to be better wives and mothers -
- Cheerfully giving a helping hand at all times, and in so many ways.

We, the editors, with great appreciation, dedicate The Windswept Echoes, 1957.





## *Our Community Helps Us Grow*

### *The School Board*

Always behind our efforts are the members of our local school board. They work tirelessly that we may have a school of which we can be proud.



### *Community Improvement Organization*

For the past one and one-half years, a group called the Copeland Community Improvement Organization has given much time, labor, and money, so that we may enjoy many new things around school.





# The Administration

## Superintendent

Our Superintendent, Mr. Gentry, has a deep understanding of our needs, having himself, worked many years as a teacher and a principal. His efforts know no end in his desire to help our schools become better places for us to grow.



MR. J. S. GENTRY

## Principal

A forward look and high purpose characterize Mr. Graham. Through his understanding and skill in dealing with our problems, he has become known as a wise counselor and friend.



MR. ARTHUR GRAHAM





## *The Faculty*

### *The Day Begins in the Front Hall*

With patience and understanding, the teachers guide us through the various phases of academic growth. The fundamentals which are essential to daily living are presented, and skills are learned which will help provide future economic security.

Through class association with each of these people, we have come to know them as our friends.



MARY ELLEN GRAHAM

Social Studies

VIRGINIA JONES

Business



LONNIE BLEDSOE

Science, Physical Education

ROBERT MARSHALL

Spanish, Geography

WAYNE NANCE,

English



ANNE REID

Mathematics

RUBY STANLEY

Home Economics

WILLIAM E. PARKER

Agriculture





Seniors <sup>★</sup>





Sammie Moser    Kathy Wolfe

## *The Mascots*

These two youngsters are so charming that they delight us all when they are around.

## *The Senior Class Officers Are Leaders*

A roster of good officers is an essential part of any Senior Class. Organization is necessary to carry on the many projects which seniors always undertake. Honesty, efficiency, and dependability, are requirements which are expected of each one, and in this year's officers we are not disappointed.

Joyce Wall    Gaynell Wolfe    Bill Ring    Louise Moser





JUANITA BAKER

Echo Staff, Circulation Manager 4; Glee Club 3; Reporter on Bus 3; Perfect Attendance 3.

JERRY STYERS BOYLES

FFA Club 1, 2, 3, 4; Boy Scout 1; 4-H Club 1, 2; Substitute Bus Driver 3.



MOLLY SUE BRUNER

Beta Club 4; Music Club 1, 2; 4-H Club 1, 2, 3; Glee Club 2, 3, 4; Reporter 2; Bus Secretary 3, 4; Perfect Attendance 1, 2, 3;

PHILLIP DAVIS BURRUS

FFA Club 1, 3, 4; Beta Club 4; Substitute Bus Driver 3, 4.

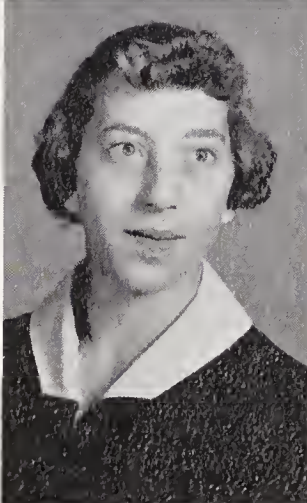


PEGGY ELIZABETH CHILDRESS

Beta Club 4; Glee Club 2, 4; FHA 1, 2, 3; 4-H Club 1.

JEWEL CREED COE

Echo Staff 4; Class Officer, Vice President 2; Beta Club 4; FHA Club 1, 2, 3; Tri-Hi-Y Club 1, 2; 4-H Club 1, 2, 3, 4; Glee Club 3, 4.

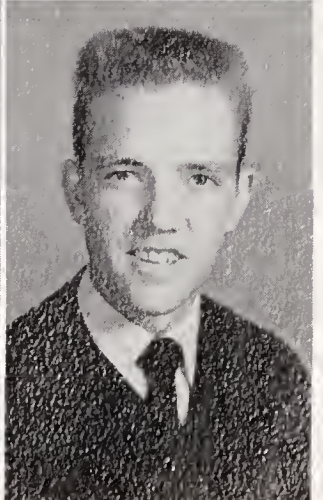


WALDO WILLIAM COE

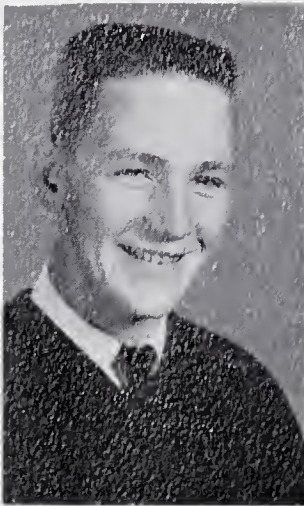
Marshal 3, 4; Beta Club 4; FFA Club 1, 2, 3, 4; Echo Staff, Typist 4; Vice President 2; Typing Award 3; Citizenship Award 3; Honor Roll 4; Superlative.

DALLAS LEE CORDER

4-H Club 1; Substitute Bus Driver 2, 3; Bus Driver 4; FHA Club 1, 2, 3, 4.





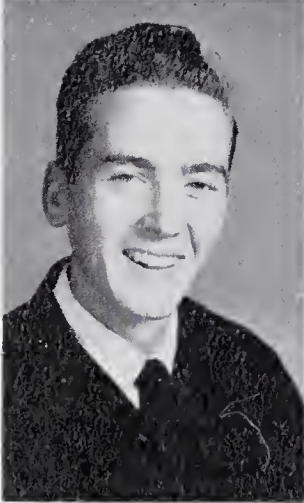


DONALD GENE CULLER

Beta Club 4; FFA Club 1, 2, 3, 4; Hi-Y Club 4; 4-H Club 1, 2, 3, 4; Bus Driver 4; Substitute Bus Driver 3; Boy Scout 1.

RACHEL ANN EAST

Annual Staff, Co-Editor 4; Echo Staff, Social Editor 4; Beta Club 3, 4, Treasurer 4; Tri-Hi-Y Club 4, President 4; FHA Club 3, 4; Glee Club 4; 4-H Club 4; Golden Honor Roll 3, 4; Marshal 3, 4; Spelling Award 2; Bus Secretary 4; Typing Award 3; Class Reporter 1; Citizenship Award 3

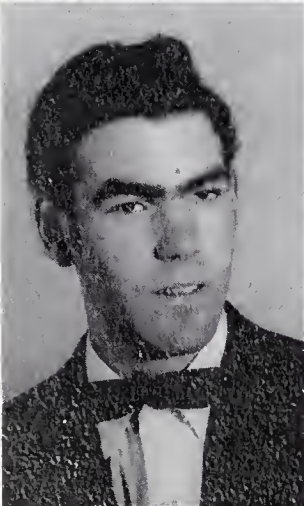


HERMAN HALL

4-H Club 2; Hi-Y Club 4; Baseball 2, 3, 4; Bus Driver 4; Substitute Driver 3; Citizenship Award 3, 4; FFA Club 2, 3, 4; Class Officer, Vice President 1.

CLAUDINE HOLYFIELD

Beta Club 4; Basketball 3, 4; Perfect Attendance 7 years; Honor Council 2.

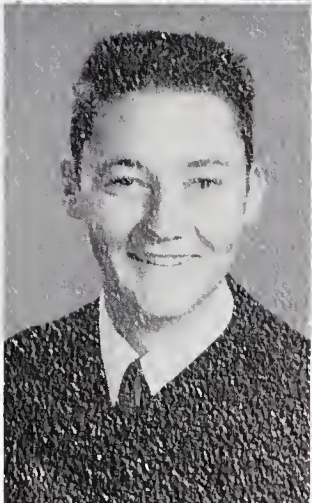


DONALD RAY KEY

4-H Club 1, 2; Baseball 3; FFA Club 2, 3, 4; Class Reporter 2; High Light Staff 4; Superlative.

BETTY JANE MARTIN

Echo Staff, Typist 4; Beta Club 4; Glee Club 3, 4; Basketball Manager 3; 4-H Club 1, 2; Bus Reporter 2; Marshal 3, 4; Bus Secretary 3, 4; Typing Award 3.



ALICE FAYE MARTIN

Echo Staff, Co-Editor 4; Beta Club 3, 4; Tri-Hi-Y Club 4, Program Committe 4; FHA Club 3, 4, Secretary 4; Marshal 3, 4; Glee Club 2, 4; Typing Award 3; 4-H Club 1, 4.

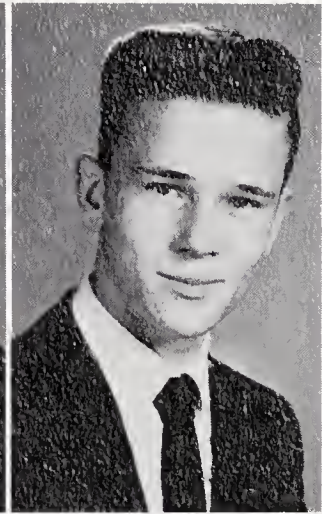
MARSHALL GRAY MOSER

Echo Staff, Typist 4; FFA Club 1, 2, 3, 4; Bus Driver 4; Substitute 3; Superlative.



MARTHA LOUISE MOSER

Echo Staff, Activities and Society Editor 4; Annual Staff, Photographic Editor 4; Beta Club 4; Class Officer, Treasurer 1, 3, 4, Song Leader 4; Music Club 1, 2; Tri-Hi-Y Club 2, 4; Glee Club 1,2, 3, 4; Reporter 2, 3.

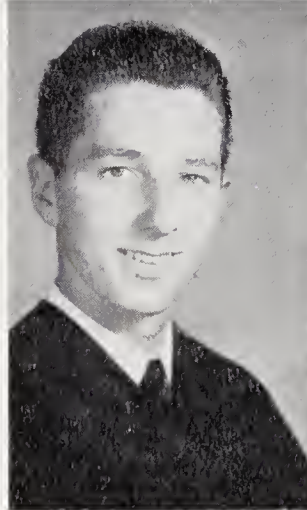


RAY ARNOLD MOSLEY, JR.

Beta Club 2, 3, 4, President 4; Basketball 2, 3, 4, Captain 4; Business Manager and Sports Editor 4; Baseball 2, 3, 4.

BILLY PATTERSON RING

4-H Club 1; Class President 1, 4; FFA 1, 2, 3, 4, Sentinel 4; Substitute Bus Driver 3, 4; Hi-Y Club 2, 3, 4, President 4; President Bus Drivers Club 4; Boy Scout 1; Manager Boys Basketball Team 2.

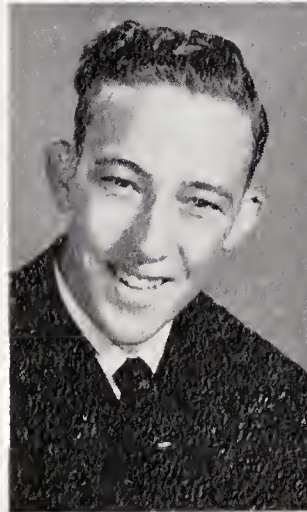


BOBBY LEE SHINAULT

FFA 1, 2, 3, 4; 4-H Club 1.

CLIFFORD NELSON SIMPSON

FFA 1, 2, 3, 4; Beta Club 4; 4-H Club 1, 2.

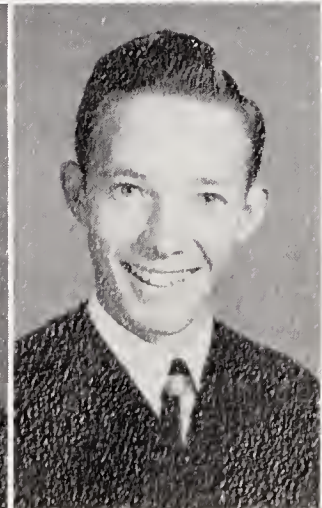


NANCY VICTORIA SHORE

Annual Staff, Co-Editor 4, Junior Business Manager 3; Echo Staff, Social Editor 4; Beta Club 3, 4; Tri-Hi-Y Club 1, 2, 4; FHA Club 1, 2, 3, 4; Glee Club 4; Honor Roll 2, 3, 4; Perfect Attendance 11 years; Honor Council 1, 2, 3; Marshal 3, 4; Class President 2; 4-H Club 1, 2, 3, 4; Superlative.

JOYCE ANNETTE SIMPSON

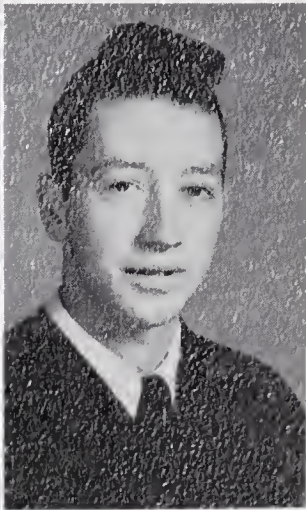
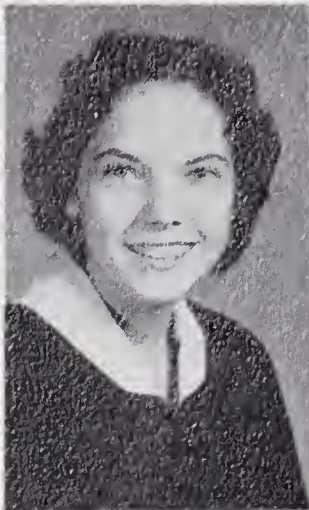
Echo Staff, Sports Editor 4; Beta Club 4; Monogram Club, Charter Member, Co-President, Reporter, 4; 4-H Club 1, 2, 3, 4, Chaplain 4; Tri-Hi-Y Club 1, 4; FHA Club 1, 2, 3, 4; Class Officer. Song Leader 2; Bus Reporter 3; Superlative.



CLAUDE WILLIAM SNOW

FFA 1, 2, 3, 4; 4-H Club 1; Beta Club 4; Substitute Bus Driver 3, Bus Driver 4.



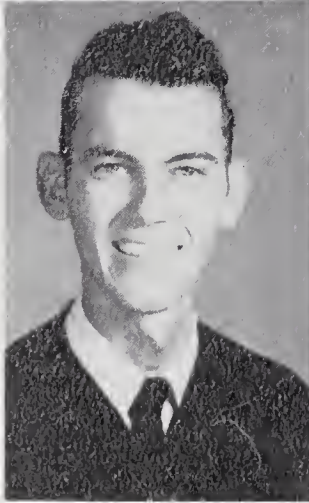


DOROTHY LOUISE TUCKER

Beta Club 4; Glee Club 3, 4; Class Officer, Secretary 4; 4-H Club 1, 2; Glee Club, Secretary, Treasurer 4; Typing Award 3; Annual Staff, Commercial Editor 4.

CURTIS FRANKLIN VENABLE

4-H Club 1; FFA Club 1, 2, 3, 4, President 4; Bus Driver 4; Bus Driver Club 4, Secretary 4.

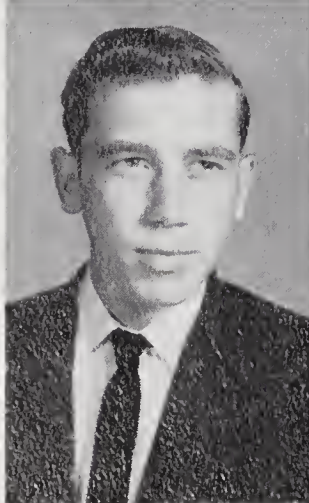


BOBBY RAY WALL

FFA Club 1, 2, 3, 4; Reporter 4; Bus Driver 3, 4; Hi-Y Club 4; Citizenship Award 3; Substitute Bus Driver 2.

JOYCE ADELINE WALL

Echo Staff, Editor-in-Chief 4; Chief Marshal 3, 4; Beta Club 2, 3, 4, Secretary 4; Annual Staff, Junior Co-Editor, 3; Class Officer, Vice President 1, Treasurer 3, Secretary 4; Golden Honor Roll 2, 3, 4; Honor Roll 1, 2, 3, 4; Citizenship Award 3; Glee Club 4; FHA Club 3, 4, President 4; Tri-Hi-Y Club 4, Chaplain 4; 4-H Club 1, 4; Typing Award 3; Bus Secretary 4; Superlative.



ARNOLD EDWIN WHITAKER

FFA Club 1, 2, 3, 4; 4-H Club 1; Bus Driver 4; Substitute Bus Driver 3; Hi-Y 4; Baseball 4; Honor Roll 4; Superlative.

MARTHA GAYNELL WOLFE

Echo Staff, Activities and Society Editor 4; Beta Club 4; Class Officer, Treasurer 1; Secretary 2, President 3, 4; Tri-Hi-Y Club 1, 4, Treasurer 4; Marshal 3, 4; Glee Club 2, 3, 4, President 4; Bus Secretary 3, Reporter 3; Superlative.



ALICE FAYE WRIGHT

Echo Staff, Humor Editor 4; Beta Club 4; Glee Club 4; Citizenship Award 3, 4; Superlative.

BARBARA TAYOR

In Memoriam





Juniors<sup>☆</sup>





## *Junior Class Officers*

Faye Danley    Frances Cooke    Harry Stanley    Joyce Smith

## *This Year's Juniors . . . Next Year's Seniors*

The Juniors have been referred to at times as "Jolly Juniors." This is typical of the class of '58. They are talented, energetic, and original. Large in number, they are a vital and helpful part of our school.





ELVA ALLEN  
DOROTHY BLEDSOE  
PEGGY BROWN  
REGINA BULLINGTON



JOHNSON CHILTON  
FRANCES COOK  
JANIE CREED  
FAYE DANLEY



RAY DANLEY  
TEX FLIPPIN  
RUBY FLYNN  
ANN FULK



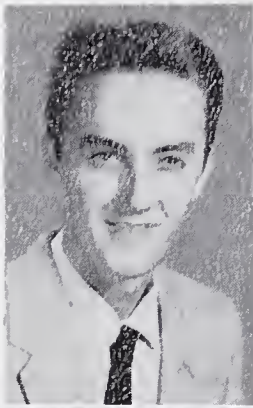
EUGENE FULK  
JOYCE HAMLIN  
JACK HARDY  
LOIS HILL



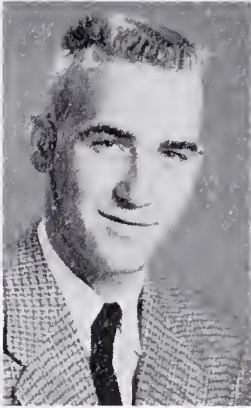
BONNIE HUDSON  
LONNIE JOHNSON  
MAUDINE JOHNSON  
GLENNICE KEY



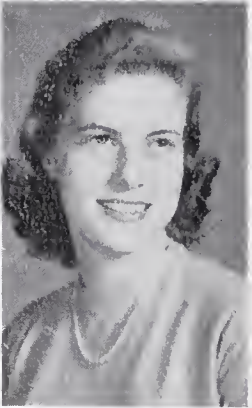




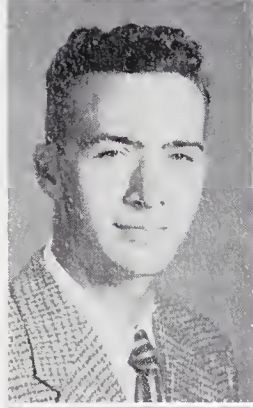
J. W. KEY  
 ALMA MARION  
 BONNIE MARSH  
 DONNIES QUESINBERRY



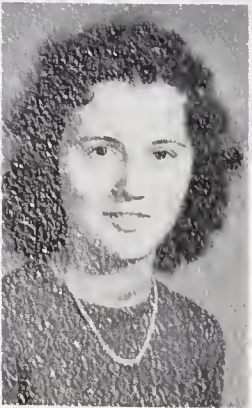
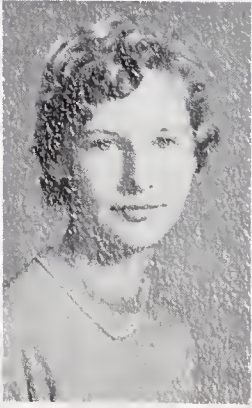
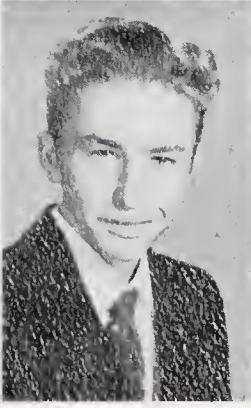
JIMMY PATTERSON  
 LARRY PATTERSON  
 VIVIAN RACHELS  
 GRAY RIDDLE



RACHEL ROBERTSON  
 REBECCA SHINAULT  
 PHYLLIS SIMPSON  
 JOYCE SMITH



HARRY STANLEY  
 RONALD STANLEY  
 TED STANLEY  
 WALLACE WATSON



CAROLYN WHITAKER  
 PHILLIP WHITAKER  
 GAIL WHITE  
 BETTY JO WOOD

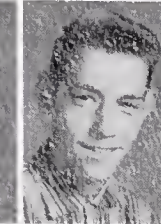
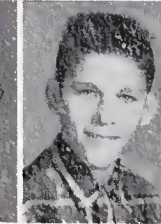
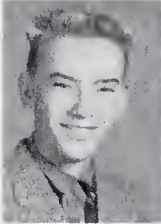
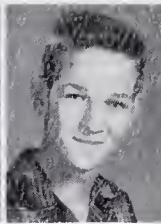
Not Pictured;  
 LEONARD CREED  
 MAX CUMMINGS  
 PATTY SECHRIST





*Sophomores*





Carol Bledsoe  
 Martha Boyles  
 Billy Brown  
 David Brown  
 Johnny Bruner  
 Adeline Bryant  
 Virginia Coe  
 Belva Coe  
 Barbara Collins  
 J. E. Creed  
 Betty Crissman  
 Frances Danley  
 Patty Draughn  
 Clara Green  
 Barbara Hall  
 Bonita Hardy  
 Leonard Hutson  
 Gladys Hutchens  
 Bennie Johnson  
 Jackie Johnson  
 Polly Johnson  
 Eugene Joyner  
 Earl Martin  
 Linda McKinney  
 Janice Moseley  
 Jay Hugh Mosley  
 Dennis Nichols  
 Josephine Perkins  
 Lin Phillips  
 Louise Poindexter  
 Wilbur Shinault  
 Clayton Simpson  
 Polly Simpson  
 Brent Snow  
 Gay Snow  
 Kent Snow  
 Jimmy Speaks  
 Billy Wall  
 Faye Wall  
 Max Wall  
 Peggy Whitaker





Junior High



Arlie Allen  
 Roger Atkins  
 Ray Badgett  
 Gaither Bledsoe  
 Linda Bledsoe  
 Fran Bowman  
 Bobby Boyd  
 Brent Bruner  
 Mac Burrus  
 Alma Coe  
 Roger Coe  
 Marene Childress  
 Moir Chilton  
 Betty Collins  
 Carl Collins  
 Leon Collins  
 Kenneth Cook  
 Annabelle Corder  
 Faye Davis  
 Lois Ann Doby  
 Marie Doss  
 Arnold Eads  
 Joann Eads  
 Shelby Flynn  
 Donald Harbour  
 Judy Hardy  
 Jackie Holyfield  
 Wayne Holyfield  
 Bruce Johnson  
 Gayle Johnson  
 Ann Key  
 Arnold Gray Key  
 Velma Key  
 Edith Lawson  
 Lois Marsh  
 Martha Jane Marsh  
 Carol Martin  
 Joseph McGee  
 Billy Joe McHone  
 Peggy Mitchell  
 Adelaide Moser  
 Elizabeth O'Neal  
 Eva Penley  
 Letty Pilson  
 Billy Reynolds  
 Vance Shinault  
 Leonard Simpson  
 Mac Simpson  
 Carolyn Snow  
 Janice Snow  
 Johnny Snow  
 Benny Stanley  
 Carol Tolbert  
 Betty Jean Wall

Bonnie Wall  
 Brenda Wall  
 Kenneth Whitaker  
 Frances Wilmoth  
 Kenneth Wolfe  
 Joyce Wood





Carolyn Atkins  
 Larry Atkins  
 Linda Atkins  
 Edwin Bauguess  
 Lucy Ellen Beck  
 Tommy Bottoms  
 Shirley Bowman  
 Dotty Bruner  
 George Bryant  
 Freddie Bullington  
 Joyce Bullington  
 Ronald Coe  
 Jackie Collins  
 Mitchell Cummings  
 Joyce Easter  
 Carolyn Flynn  
 Bonnie Fulk  
 Harold Hudson  
 Nannie Sue Hutchens  
 Mary Ann Hutson  
 William Johnson  
 Helen Lawson  
 Clyde Marion  
 Judy Martin  
 Calvin Mooney  
 Henry Mosley  
 Danny O'Neal  
 Dorothy O'Neal  
 Donald Perkins  
 Kenneth Poindexter  
 Carolyn Reynolds  
 Thomas Rowe  
 Johnny Scott  
 Peggy Scott  
 James Shore  
 Janice Simpson  
 Carole Snow  
 Jack Stanley  
 Minnie Lou Taylor  
 Brenda Venable  
 Don Venable  
 Janice Watson  
 Tommy Watson  
 Bonnie Whitaker  
 Brenda Whitaker  
 Faye Whitaker  
 Lanny Whitaker  
 Phil Whitaker  
 Shirley Whitt  
 Sue Wolfe  
 Louise Wood  
 Martha Jean Wood  
 Opal Wood  
 Shelby Wood

Not Pictured:  
 Gene Danley  
 Roy Duncan  
 Woodrow Gwyn  
 Irene Riggs  
 Helen Venable  
 Edgar Wall



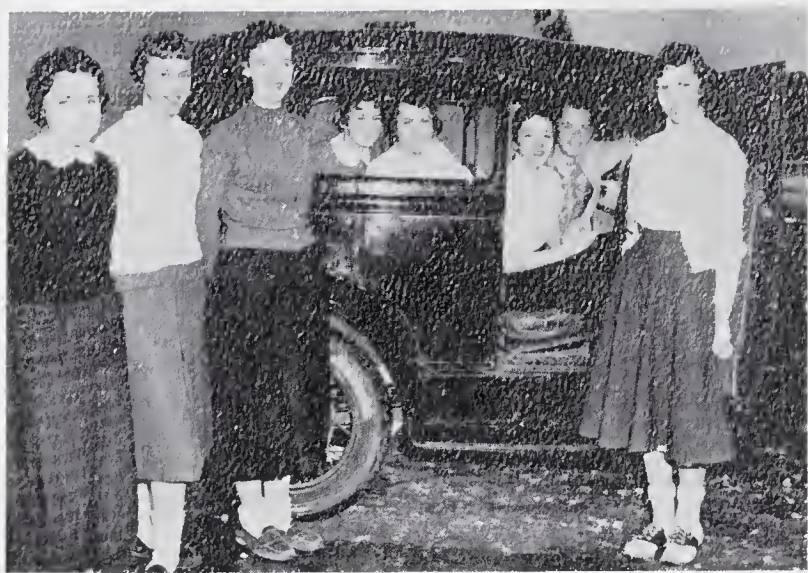
Mrs. Badgett

Mrs. Parker

## Sub-Freshmen







*Underclassmen  
Love  
Fun*



*But Work  
Is Appealing  
Also*



The above groups are Sophomore, Freshman, and Sub-Freshman Class Officers. Underclassmen are led by the officers they elect. Lessons in democracy, parliamentary procedure, and citizenship, evolve from participating in these activities.



*Following Us . . .  
the Younger Folk  
in the School of Today*



*Through Reading*

- From books . . .
- Magazines . . .
- Listening to others read . . .



*'Riting*

- In formal lessons . . .
- Letters . . .
- Written reports . . .



*and 'Rithmetic*

- Through practical situations . . .
- Drills . . .
- Problem solving . . .





## *Through Science*

Rocks . . .  
 Minerals . . .  
 Birds . . .  
 Nature study . . .



## *in Music*

Rhythm bands . . .  
 Piano . . .  
 Creative music . . .  
 Singing . . .



## *and Music Appreciation*

Little Symphony concerts . . .  
 Record playing . . .  
 Art . . .



## *at Leisure*

- Rest periods . . .
- Group activities . . .
- Hobbies . . .



## *in Games*

- Dramatization . . .
- Folk dancing . . .
- Creative activities . . .

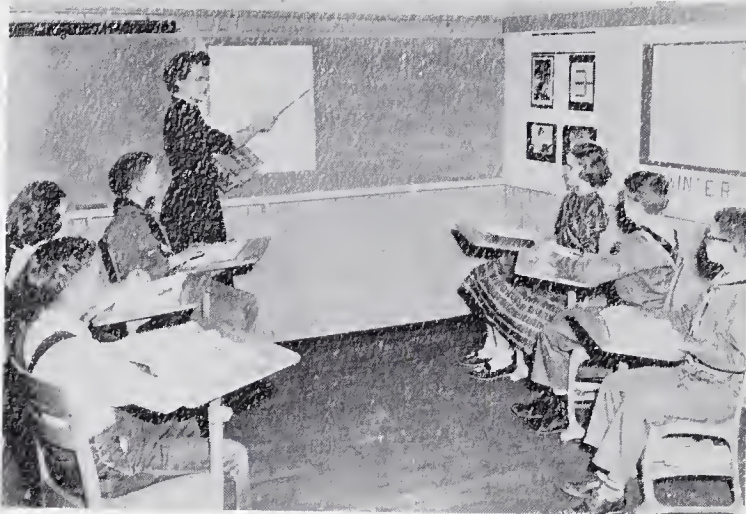


## *and Social Contacts*

- Parties . . .
- Picnics . . .
- Sharing . . .







## *Through Words*

Spelling . . .  
Spoken words . . .  
Dictionary definitions . . .



## *With Understanding*

Other lands . . .  
And people . . .  
Geography lessons . . .  
Maps . . . Stories . . .



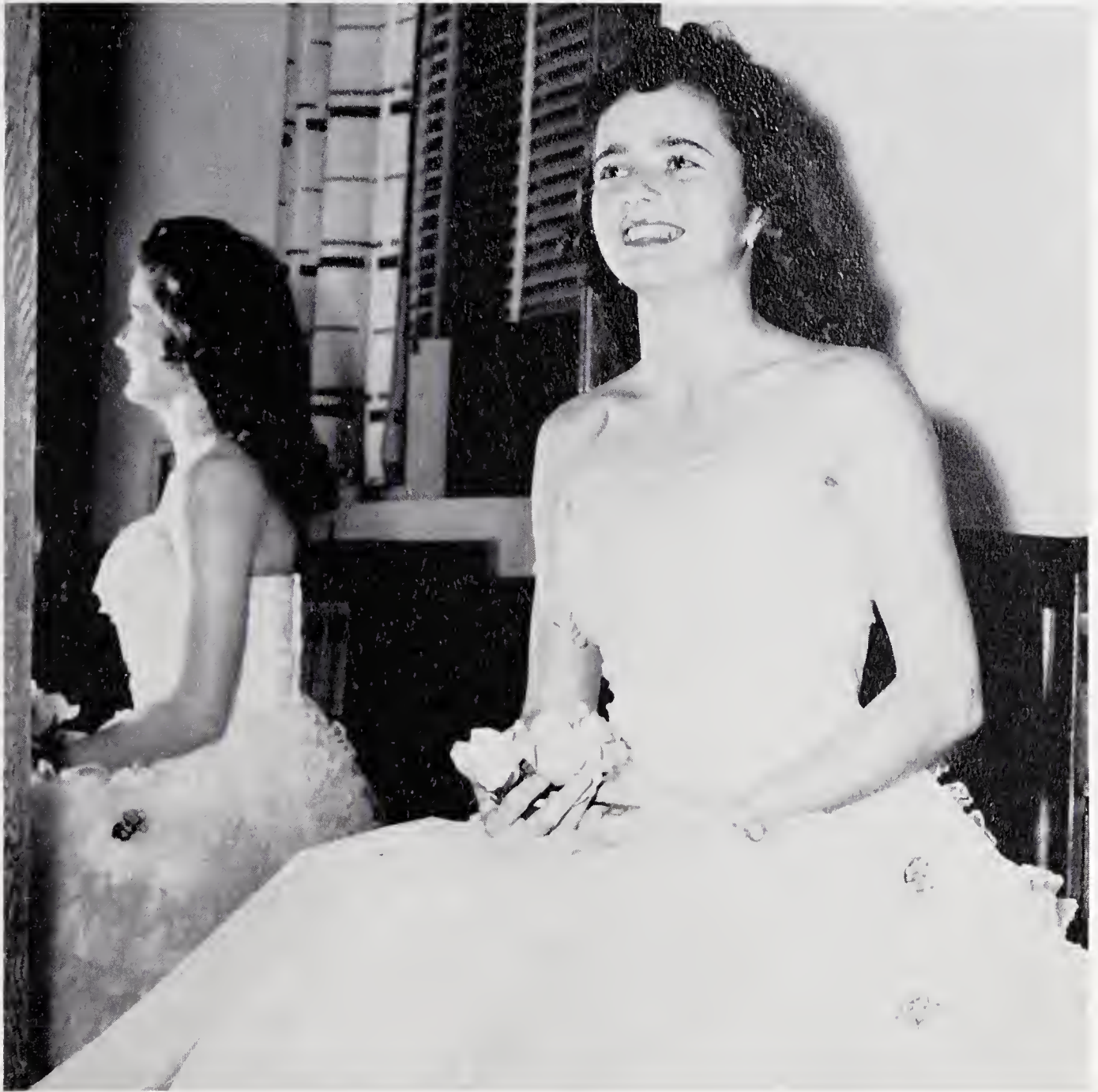
## *by* *Christian Guidance*

Bible passages . . .  
Pictures . . .  
Inspirational programs . . .

*. . . Build for Tomorrow*



## *The School*



### *Miss Copeland*

FAYE DANLEY

Chosen by the school and community, she is Queen for a year, and reigns with dignity and in beauty supreme.

### *Picks Its Favorites*



## *Senior Superlatives*



### *Best All-'round*

JOYCE WALL

WALDO COE

Well rounded in all fields of endeavor, they excel in scholarship, leadership, and citizenship.

### *Most Industrious*

NANCY SHORE

BOBBY WALL

Always willing to lend a helping hand, no task is too menial for these two.







## *Most Popular*

GAYNELL WOLFE

BILLY RING

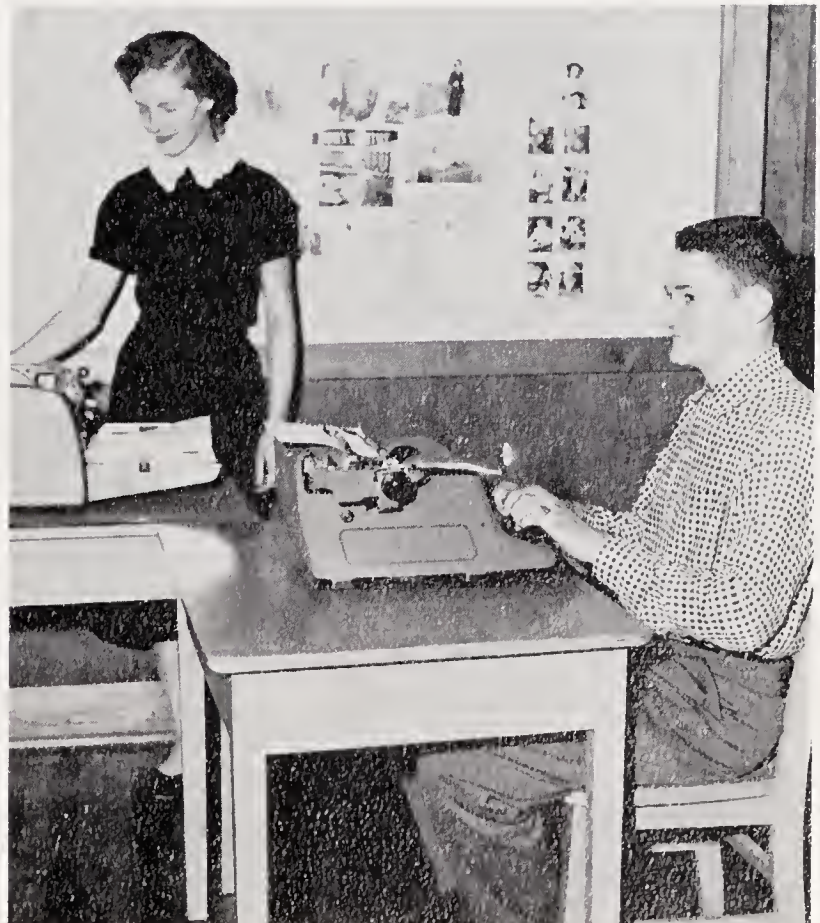
Their ability to share with others, their love of fun, and their qualities of leadership, endear them to the hearts of their classmates.

## *Most Valuable to School*

JOYCE WALL

GRAY MOSER

Their desire to be helpful makes them a great asset to their teachers and their school.







## *Wittiest*

ARNOLD WHITAKER

JOYCE SIMPSON

Fun is fun, and with these two it is always original, clean, and at the expense of no one save themselves.

## *Prettiest, Most Handsome*

FAYE WRIGHT

DONALD RAY KEY

Combining outward loveliness and charm with inward beauty, these two are really a charming pair of Seniors.







## *Best Personality*

BILL RING

FAYE WRIGHT

Combining all the virtues of charm, wit, and physical attractiveness, these two were chosen by their classmates for their superior personalities.

## *Most Likely to Succeed*

HERMAN HALL

RACHEL EAST

With their feet planted firmly on the ladder leading to success, these two are sure to reach the top.







*Miss American Legion*

JOYCE SMITH

Chosen by her schoolmates and teachers to represent our school in a two-county talent and beauty contest, Joyce Smith made us very proud when she won the crown and title for 1956-57.

*Junior  
King and Queen*

JIMMY RING

DEBORAH WHITE

They are the Royalty elected to reign in the Elementary School for 1956-57.





## *Sports . . .*



### *Monogram Club*

Composed of boys and girls who have earned a letter for proficiency in some field of major sports, their work to promote good sportsmanship and to help in making improvement in our gymnasium has been outstanding during the year.

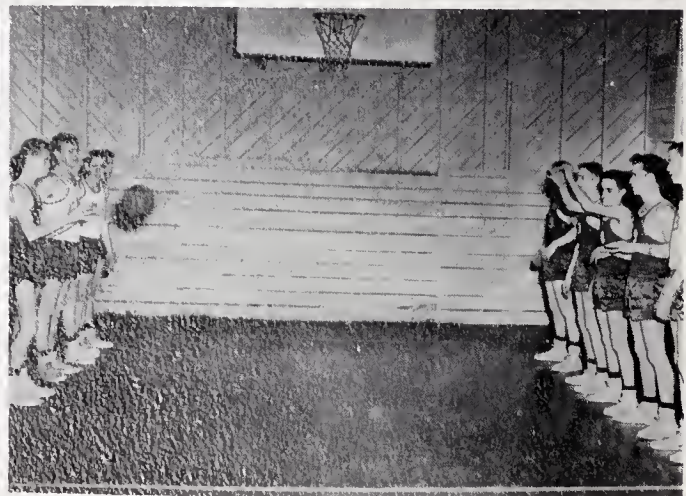
*Are a Major Interest*



# Boys' Basketball



The Basketball team, piloted by Mr. Bledsoe, had a good season. The number of games won and games lost determines to some extent the success of a year's sports record, but with a team like this one, we won all the time.





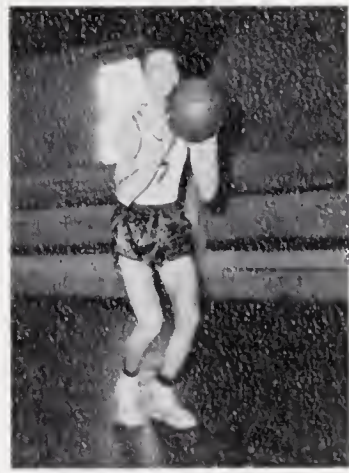
*Individual Players  
Working Together*



LONNIE BLEDSOE, Coach



MAC BURRUS



GRAY RIDDLE



HARRY STANLEY



J. W. KEY



LARRY PATTERSON



RAY MOSLEY, JR.  
Co-captain



TEX FLIPPIN  
Co-captain

*Make a Team*



# Girls' Basketball



Coaching . . . practice . . . cooperation . . . hand work . . . developing skills . . . responding to instruction . . . perseverance and patience . . . These are qualities needed to develop good teams, and our girls did have a good team.





*Every Member*



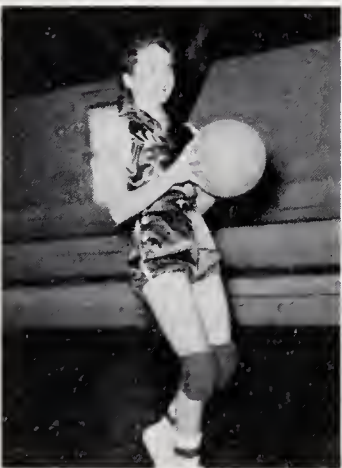
JOYCE SIMPSON



FAYE WALL



MARTHA BOYLES



FAYE DANLEY



FRANCES COOK



GLENNICE KEY



FRANCES DANLEY



BRENDA WALL

*Is Important to Her Team*



## *Baseball Ushers in Spring*



Baseball is popular with old and young alike, and under the direction of Coach Nance they usually manage to win a lot of games. This year, on the new field, they should be able to come through in fine form again.





## *Cheerleading*



Joyce Smith



Rebecca Shinault



Polly Simpson



Carol Bledsoe



Gladys Hutchens

The Cheerleaders add spirit and vitality to the action executed by our teams. The encouragement they draw from the spectators in the cheering section helps the teams to have a better record of games won - hence a more successful year of Sports.



Gaye Snow



Clara Greene

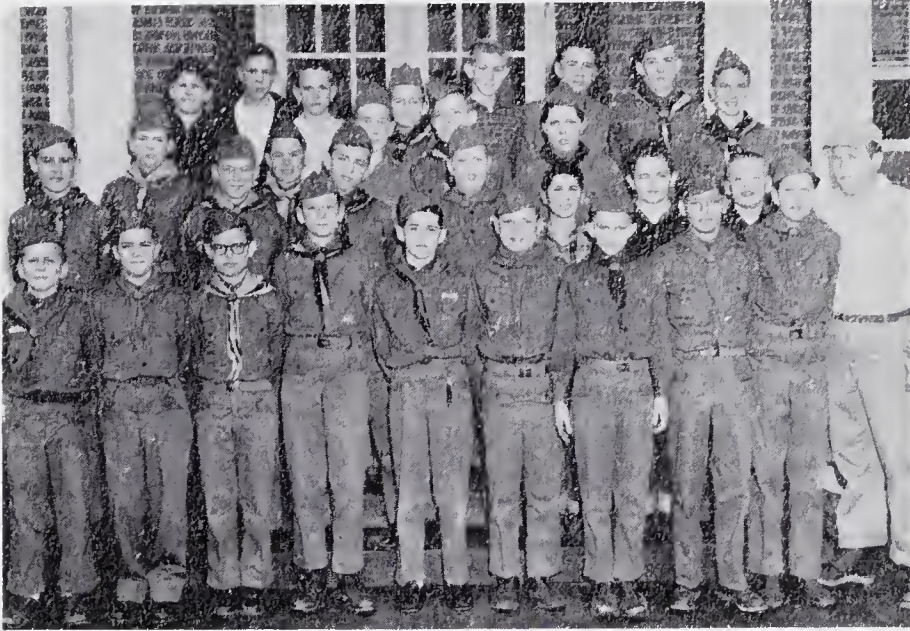


Gail White,  
Chief

*Is Important to Sports*



## *These Boys Are Always on Hand*



*Boy Scouts*

Once on a very rainy evening, the Boy Scouts were on hand to direct traffic during a ball game. The job they did was superb, proving that the Boy Scouts are dedicated to rendering service to their fellowmen.

## *Bus Drivers*

Not only do they shoulder the responsibility of getting the entire student body to school and home again each day, but many of them return in the afternoon to practice for ball games, and again many evenings to play, or to support their teams from the cheering section.



*to Back Our Sports*



## *Many Activities*



### *Marshals*

Chosen for their scholastic accomplishments, physical attractiveness, and social graces, the marshals usher at all school functions and at graduation. Without them, no school program would be a success.

*Help Us Grow*





*The  
Echo  
Staff*

*The  
Newspaper*

Publications provide a record of events and give students an opportunity to discover a little of the thrill of journalism. There is an eight page newspaper - which comes out three times a year. The yearbook is a summary of our year's accomplishments.





*The  
Windswept  
Echoes  
Staff*



*The Yearbook*

Co-Editors  
Rachel East, Nance Shore

*The Beta Club Sponsors The Yearbook*

The purpose of the Beta Club is to reward the students for achievements in scholarship, leadership and citizenship. The activities of the club are designed to be helpful to both the student and the school, and a number of worthwhile projects are undertaken each year.



*The  
Beta  
Club*



## *These Clubs Provide Opportunities for Spiritual Growth*



### *Tri-Hi-Y Club*

Rachel East  
Joyce Smith  
Rebecca Shinault  
Gaynell Wolfe

With ideals of Christian Service as their goal, the Tri-Hi-Y has many worthwhile activities. Providing necessities and comforts for those less fortunate than they is always one of their major projects.

### *Hi-Y Club*

Officers

Billy Ring  
Don Culler

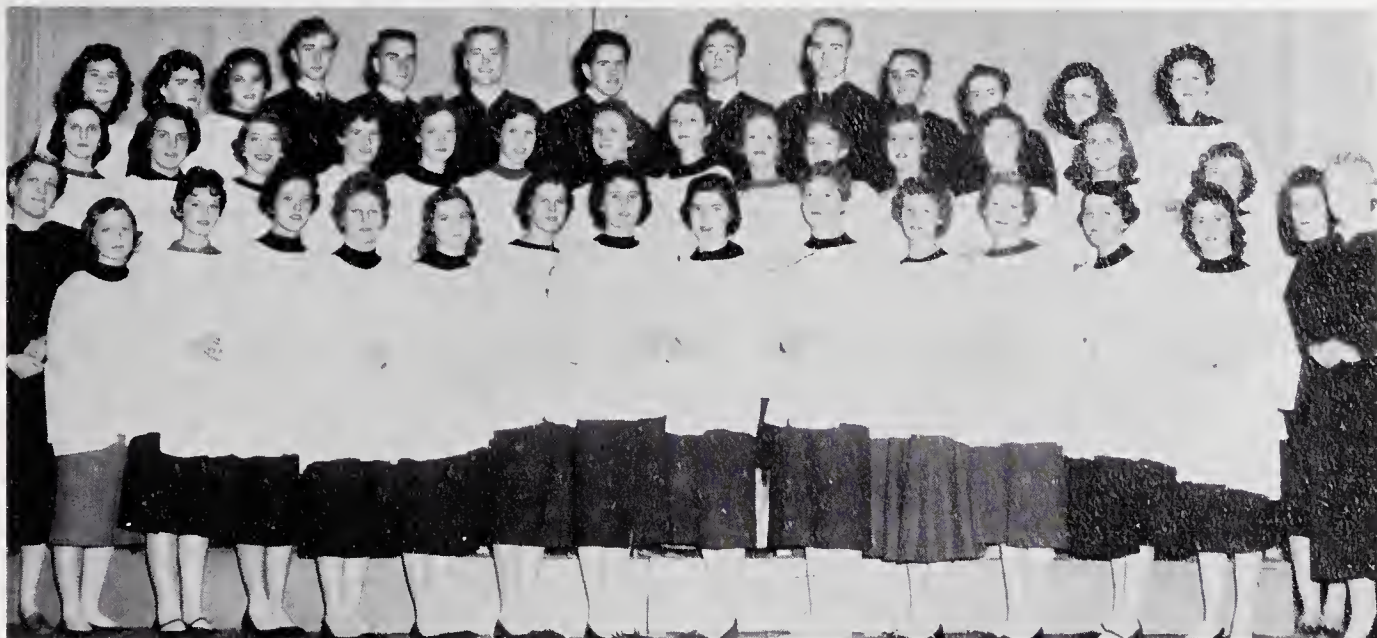


Hi-Y

The Hi-Y has as its goal the promotion of Christian habits, growth, and services. Through training received in this club, the moral standard of its members is always kept high.



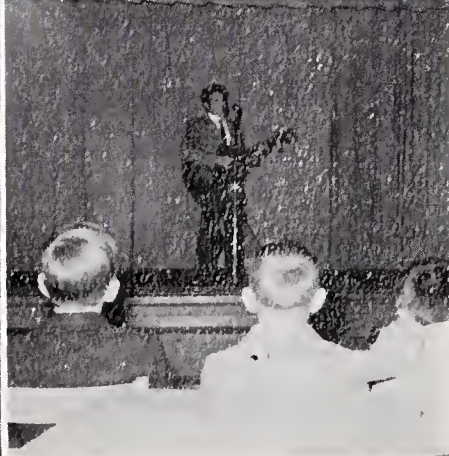
# *Self-Expression Is Provided Through Song*



## *The Glee Club*

Music is an integral part of school life. The fine work of this group is often demonstrated in public when it is called upon to take part in school programs.

At graduation time especially, the music is a most important feature of the Commencement festivities.





## *Future Homemakers of America*



### *F.H.A. Officers*

Joyce Wall  
Gaynell Wolfe  
Faye Danley  
Faye Martin  
Mrs. Stanley

The girls of today will be the homemakers of tomorrow. In this club they learn lessons that will make them proficient in running the homes of the future.

## *Trains for Many Phases of Homemaking*



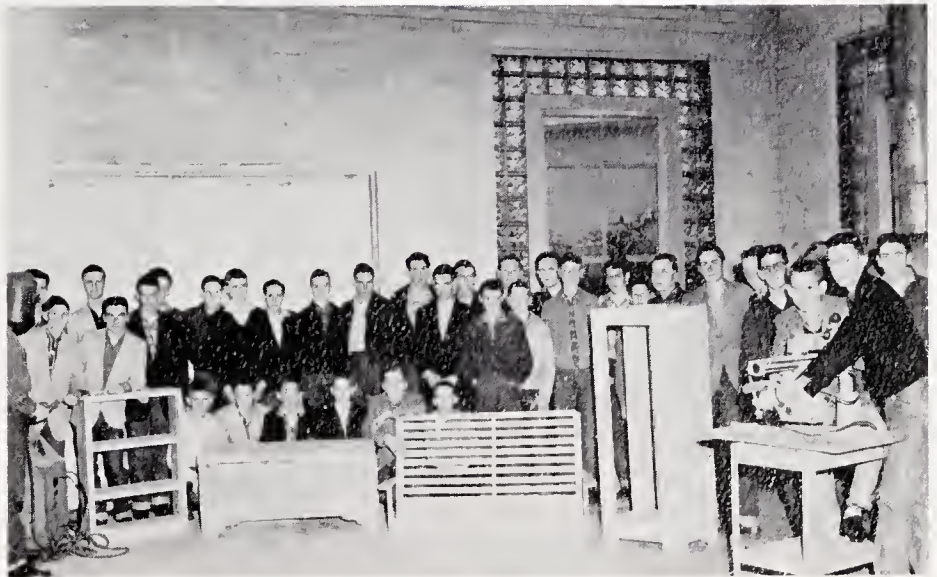




# *The Future Farmers of America*



In formal meetings, in the shop, and on the farm, the activities of the Future Farmers are training the boys to be good farmers of tomorrow.



## *Help to Build Better Farmers*





Gail White, Joyce Smith, Gaynell Wolfe, Louise Moser.

## *The 4-H Club*

The 4-H Clubs of America are doing a wonderful job of building better citizens for tomorrow.

*So . . .  
Through . . .  
Classes . . .  
Sports . . .  
Activities . . .*

*We, the Youth of Today,  
Grow Into the Men and  
Women of Tomorrow.*





# Advertisers<sup>☆</sup>





**ONE  
IN  
THREE**

In 1956, about one in every three customers on the Duke System, or some 200,000, are Rural Customers.

We are proud of providing our farm customers as good service as their city neighbors enjoy.

Higher crop production with less labor and greater convenience in the farm home . . . are the natural outgrowth and our reward for Rural Electrification program, begun a quarter century ago.

**DUKE  
POWER COMPANY**







# Latest Fashions

GREATER VALUES

Best Wishes

From

## Spainhour's

A Modern Department Store

Elkin, North Carolina



BRENDLE CASH  
WHOLESALE

Fishing Tackle  
Appliances, Hardware  
Elkin, North Carolina

F. W. CHEVROLET COMPANY



Super Service

Twenty-four Hour Wrecker  
Service  
Elkin, North Carolina

PEPSI-COLA BOTTLING CO.



Phone 590

Elkin - Jonesville, North Carolina

MATHIS

JEWELRY  
STORE



Elgin, Hamilton  
and Bulova Watches  
Diamonds, Crystal, Silverware  
Day Phone 2341 - Night 2731  
Boonville, N.C.  
Your Dollar Buys More at  
MATHIS JEWELRY STORE



# SLATE

MOTOR CO.

Buy With Confidence  
Mount Airy's Leading  
Used Car Dealer

Mount Airy, North Carolina



BEESON BROS.  
TEXACO SERVICE  
615 S. Main Street

Phone 601  
Mount Airy, North Carolina



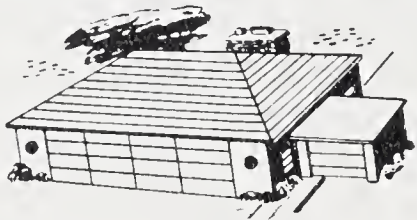
EATON & CHILDRESS  
USED CAR CO.  
East Oak St.  
Mount Airy, North Carolina  
ARTHUR EATON  
CLINTON CHILDRESS

Compliments of

# BLUE RIDGE

INSURANCE CO.  
E. C. COLLINS AND  
R. P. JONES  
Phone 402

Mount Airy, North Carolina



MARION LUMBER CO.  
See Us for Your Building Needs  
Phone 905  
Mount Airy, North Carolina

# PARKER'S

FLOOR COVERING  
604 S. South St.  
Phone 157-J

Mount Airy, North Carolina

# MOUNT AIRY

CHAIR COMPANY

Manufacturers of  
Dining Room Furniture  
Phone 383  
Mount Airy, North Carolina

# FRANK HENNIS

AUTO SALES  
438 W. Lebanon St.  
Phone 708  
Mount Airy, North Carolina



Compliments of  
**YADKIN VALLEY**

PACKERS, INC.

Mfg. of  
Piedmont Best Products

Elkin - Jonesville, North Carolina



**T. L. HAYES**

CO., INC.

Men's, Women's and Children's  
Ready-to-Wear

Furniture and House Furnishings

Funeral Directors

Boonville - East Bend  
North Carolina

**STANLEY'S**

USED CARS

Groceries and Service

Amoco Gas

Crutchfield, North Carolina



Better Groceries  
Compliments of  
**CASH AND CARRY, INC.**  
Elkin, North Carolina

**TAYLOR**

WAREHOUSE CO.

A Sale Every Day

Sell With Your Friends

**PAUL T. TAYLOR**  
**KELLY RITTER**

Winston-Salem, North Carolina

Compliments of

*Farmer's, Liberty & Dixie*

WAREHOUSES

F.P. Joyce  
Bill Sheets  
Clarence Joyce

Joe Pell  
Moss Joyner  
J.B. Green

Winston-Salem, North Carolina



It Pays to Sell Your Tobacco With  
BURNIE COOK - PENN THOMAS - WILLIAM FOWLER  
CLAUDE STRICKLAND - JULIAN VAUGHN - FRED McLAUGHLIN  
at

# COOK'S WAREHOUSES

Patterson Ave.

Extension on Hwy. 52

Winston-Salem, North Carolina  
We Have a Bank and Restaurant in  
the Warehouse for Your Convenience  
We Have a Morning Sale Every Day.

Compliments of

## BROWN'S WAREHOUSE

WILLIAM B. SIMPSON

WALTER W. VAUGHN

ROBERT W. NEWSOM

H. HOB FOWLER

Winston-Salem, North Carolina



A. A. MOSER  
& SON  
Wholesale  
and Retail  
Feed, Seed  
and Groceries  
of Every  
Description

Phone 26483

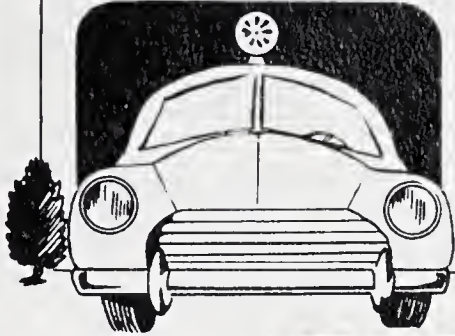
533-535 Trade St.  
Winston-Salem, North Carolina

## GLENN'S & BANNER'S

WAREHOUSES  
GLENN WAREHOUSE CO.  
For the Sale of Leaf Tobacco  
CLAUDE T. GLENN  
D.L. HARRIS  
and  
CHAS. H. DALTON, JR.  
Winston-Salem, North Carolina



AMBULANCE



**DAY & NITE**

**MOODY**

FUNERAL HOME

Home of  
Harrison Mutual Burial Ass'n.

Phone 65

WADE C. MOODY  
DENNIS W. MOODY  
Mount Airy, North Carolina

**IDEAL**

MONUMENTAL WORKS

JEFFERY BLACKMON

Owner

Mausoleum Memorials  
Markers and Cut Stone  
Mount Airy, North Carolina

**BOWMAN**

ELECTRIC CO.



126 Pine Street  
Mount Airy, North Carolina

**PLANTERS  
AND  
JONES**

WAREHOUSE COMPANY

Mount Airy, North Carolina

**BOB'S**  
CASH STORE



Worth Street  
Mount Airy, North Carolina

GRANITE CITY MOTOR CO., INC.



Your Friendly Ford Dealer  
457 N. Main Street  
138 Virginia Street  
Mount Airy, North Carolina

**JACK  
GADDY**

CHEVROLET CO., INC.



Mount Airy, North Carolina





**IT'S A  
PLEASURE!**

BEASLEY'S  
CLEANERS

Phone 3305

Dobson  
North Carolina

**ALBERTY'S**

STORE

Fertilizers and Seeds

Phone 3415

Dobson, North Carolina

Let Us Help



Your Money

**BANK OF PILOT MOUNTAIN**

Pilot Mountain, North Carolina

**PILOT  
MOUNTAIN**

MOTOR CO.

Authorized Sales and Service



Cars and Trucks

Pay Cash - Pay Less

**SURRY**

DRUG CO.

- Prescription Druggists -



Shop Here and Save  
Phone 100

Pilot Mountain, N. C.

**COX**

FUNERAL HOME  
Ambulance Service

Telephone 2-846

Pilot Mountain, North Carolina

**KIETH  
BADGETT**

INSURANCE AGENCY

Telephone 8-2529

Pilot Mountain, North Carolina



Compliments  
**W. L. LYNCH**  
DEPARTMENT STORE  
Men's, Ladies' Wearing Apparel  
Furniture Appliances  
Floor Coverings  
Phone EM 8-2647  
Pilot Mountain, N.C.

**ARMTEX,  
INC.**

Manufacturers of Knit Fabrics  
Pilot Mountain, North Carolina

**GREGORY**  
CHEVROLET CO., INC.



Phone No. 1  
Pilot Mountain, North Carolina

**MOUNT  
AIRY**

COAL YARD  
BUTTER COX ED SPARGER  
Groceries Fuel Oil  
Office Phones: 340 and 1150  
Res. Phones: 1108 and 1229  
8253 Willow St.

**HERFF - JONES  
COMPANY**

Rings - Invitations - Trophies - Medals

E. W. PADDISON, Representative

Mount Airy, North Carolina



LET US HELP



*Your Money*

# *The First National Bank*

of

Mount Airy, North Carolina

Established 1893

Member F.D.I.C.



BRAD'S CARD  
& TOY SHOP

124 N. Main  
Street  
Nationally  
Advertised Toys  
Hallmark Cards

Mount Airy  
North Carolina

CARL W. STEELE  
Your Jeweler

Phone 699

Main Street

Mount Airy

North Carolina



## HOLCOMB

HARDWARE

For Householders - Farmers  
Builders

Martin Senour Paints

Mill Supplies  
Spred Satin Paints

Mount Airy, North Carolina

## CAMPBELL

MONUMENT WORKS

A Large Display to Select  
From at All Times

Phone 1402

1197 S. Main Street  
Mount Airy, North Carolina



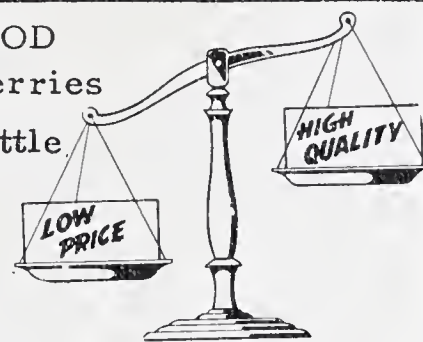
# CAROLINA

BUSINESS MACHINE CO.

618 West Fourth St.

Winston-Salem, North Carolina

J. G. WOOD  
Buys Blackberries  
and Sells Cattle.



Rt. 2

Dobson, North Carolina

WHITAKER'S GROCERY

Gas

Auto Parts

Located  
Three and  
One-Half  
Miles



South of  
Highway  
268

MR. AND MRS.  
MOIR WHITAKER, Proprietors  
Rt. 2 Dobson, N. C.

# CARTER

FURNITURE COMPANY, INC.



Mt. Airy, North Carolina

CITIES



SERVICE

YORK OIL COMPANY

Kerosene - Fuel Oil for the Home  
Cities Service, Tires, Tubes,  
Batteries, U. S. Royal Tires  
Phone 1640-J

White Plains, North Carolina

H. L. AND S. A.  
HENNIS, JR.  
Distributors  
GULF OIL  
PRODUCTS



Mount Airy, N. C.

Drawer 711

Phone 335

# TRI-ANGLE

SHEET METAL CO.

Warm Air Heating and  
Air Conditioning  
Roofing and Guttering

Phone 2075

Mount Airy, North Carolina

# HYLTON

SUPPLY COMPANY, INC.  
Next to the Post Office

Housewares - Furniture  
Hardware

Phone 237

Mount Airy, North Carolina





WE WELCOME YOUR ACCOUNT

THE  
*Surry County*  
LOAN AND TRUST  
COMPANY

There Are Larger Banks But None Safer

Serving Every Banking Need of This Area

Member of Federal Deposit Insurance Corporation

Dobson - Mt. Airy, North Carolina



HARRIS-MITCHELL TRACTOR  
CO.

"Sales and Service"  
Tractors - Implements  
Strunk Chainsaws  
Irrigation Systems



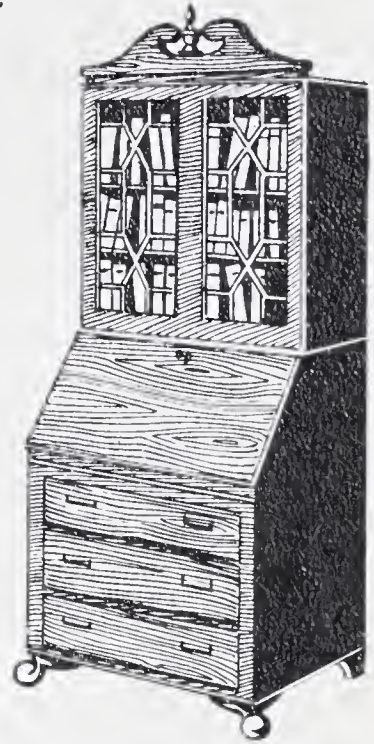
Phone 3475  
Dobson, N. C.

SURRY INSURANCE AGENCY  
J. T. THREATTE  
MRS. J. T. THREATTE  
GRAHAM BRASINGTON  
For All Your Insurance Needs

Telephone 2205

Dobson, North Carolina

For Comfort  
Phone 2451



AUSTIN-BLACKWELDER  
FURNITURE COMPANY, INC.  
"The Home of Quality Furniture  
for Less Money"  
Dobson, North Carolina

H-L

EQUIPMENT CO., INC.  
Allis-Chalmers - New Holland  
and New Idea Farm Equipment  
Lombard Chain Saws  
Buckeye Tobacco Curers  
Parts Sales and Service  
Phone 3441  
Dobson, North Carolina



Your



DEPENDABLE  
DRUGGIST

Phone 3285  
Dobson, North Carolina

WILLIAM D.  
WEIMAR,  
INC.

Manufacturers of  
Narrow Fabrics

Dobson, North Carolina



COPELAND SERVICE CENTER

Gas, Oil and Groceries

CAFE

Hwy. 268

Phone 42651



Congratulations to the Students and Faculty of  
Copeland High School  
Visit the Chatham Country Store at Elkin for All Sorts of Bargains.

Blankets, Apparel Fabrics, Upholstery and Hooked Rugs

CHATHAM MANUFACTURING COMPANY

Elkin, North Carolina

PEELE & THOMPSON RADIO  
AND APPLIANCE COMPANY

We Sell the Best and  
Service the Rest



Gibson Home  
Appliances  
124 West Main St.  
Phone 362  
Elkin  
North Carolina

Compliments of

HOLCOMB  
BROTHERS

PLUMBING AND HEATING

Phone 254

Elkin, North Carolina

A Good Drug Store

*Abernathy's*

PHARMACY

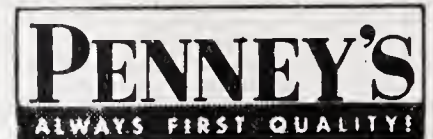
The Rexall Store

Elkin, North Carolina

At  
PENNEY'S

Pay Cash

Pay Less



J. C. PENNEY COMPANY,  
INC.

Elkin, North Carolina

Compliments of

LYNNE

HOSIERY MILL

Mount Airy, North Carolina

FLIPPIN'S

GULF SERVICENTER  
Cor. South and Lebanon Sts.  
Phone 1452



Mount Airy, North Carolina













*Taylor made*  
YEARBOOKS  
DALLAS