



*Windswept
Echoes*

1953

CAROLE SING



Carole Snow





Digitized by the Internet Archive
in 2019 with funding from
North Carolina Digital Heritage Center

<https://archive.org/details/windsweptechoes11953cope>

WE PRESENT



WINDSWEPT ECHOES

NINETEEN HUNDRED FIFTY-THREE

Peggy Harbour, Editor-in-Chief

Ellen Graham, Junior Editor

Published by
THE BETA CLUB
of
COPELAND HIGH SCHOOL
Route 2
Dobson, N. C.

FOREWORD

We, the Annual Staff of 1952-53, present to you the result of a year's work of racking our feeble brains trying to put out a publication that you will like.

Please overlook and pardon our mistakes. If you like our book, don't hesitate to let us know it, because we will feel that our trials and troubles have paid for themselves over and over again if you are satisfied. We sincerely enjoyed our task, and we hope that you, the object of our efforts, will turn these pages with satisfaction and that you will think it's the best yet.

EVERY DAY AT COPELAND



ARRIVING



BOY AND GIRL IN STORE



STUDYING
CONFERENCE



EATING



LEAVING



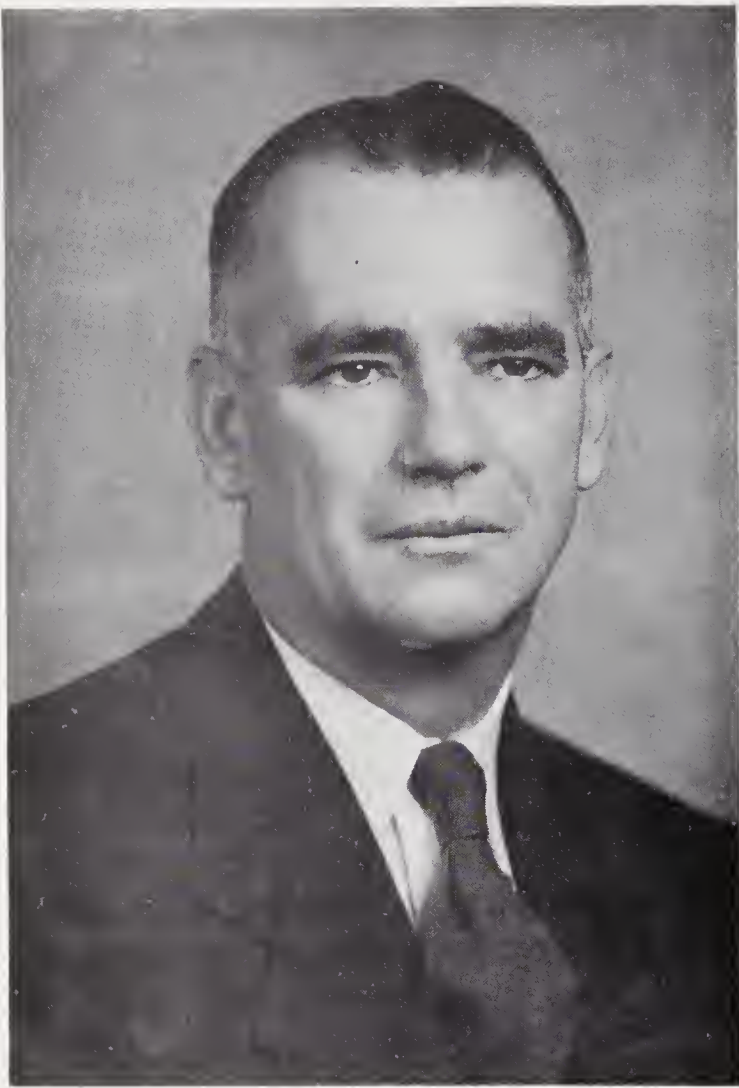
DEDICATION



We dedicate this the 1953 Windswept Echoes to Mrs. Virginia Ring Jones. For her ever-cheerful willingness to help each of us, for her thoroughness in dealing with any task we place before her, for her capable instruction, for her warm friendship, we are grateful. It is with affection and deep gratitude that we dedicate our annual to her.



Faculty



ARTHUR F. GRAHAM

Principal

FACULTY



FACULTY



ARTHUR GRAHAM
Principal



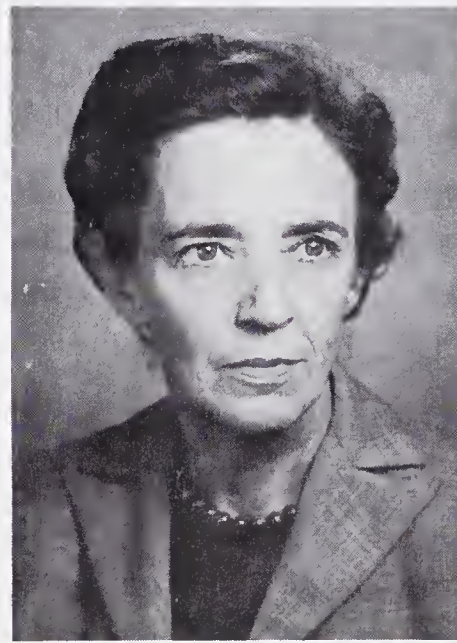
FRANCES SNOW
French, English



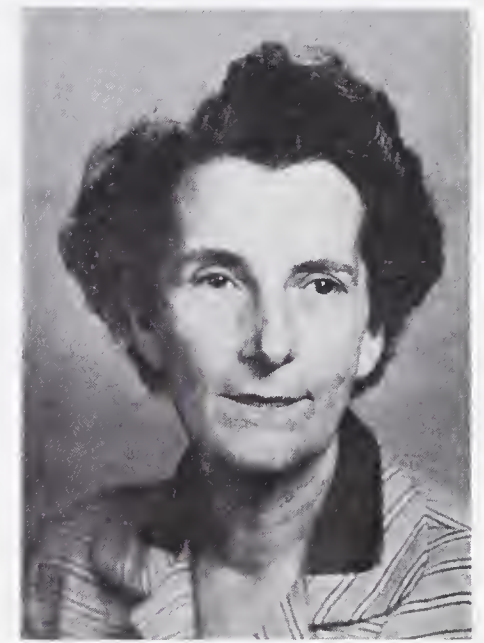
MARY ELLEN GRAHAM
Social Studies



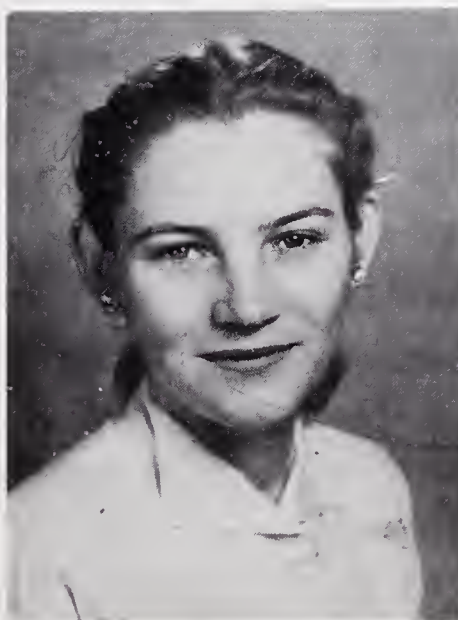
VIRGINIA JONES
Business Education



RUTH COMER
Science



ANNE REID
Mathematics



RUBY STANLEY
Home Economics



JAMES DAVIS
Agriculture



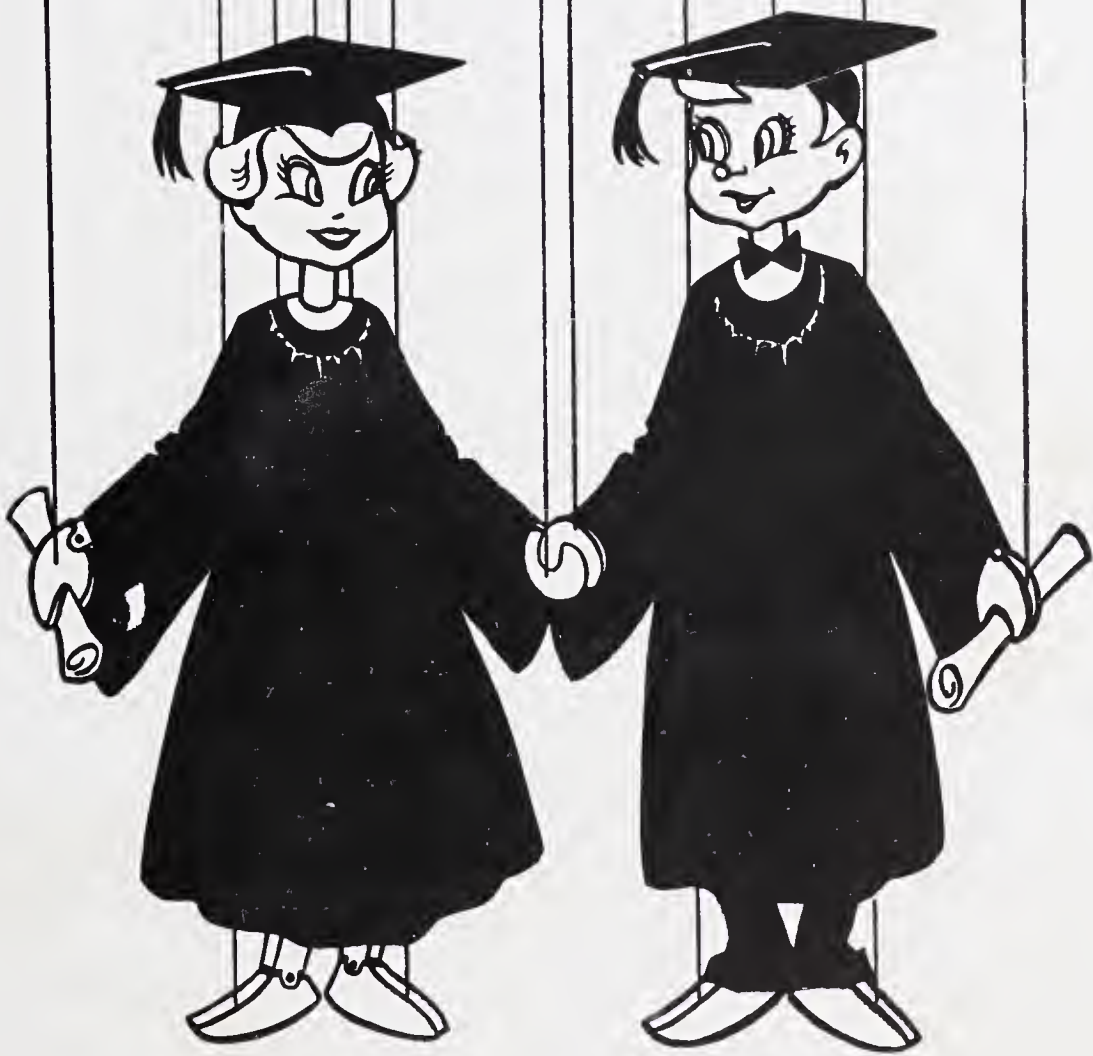
WAYNE NANCE
Physical Education



OSCAR,
"A Friend in Need"

LUNCHROOM PERSONNEL





Seniors



SENIORS

SENIOR OFFICERS

President
 Randall Bryant
 Vice-President
 Tilden Burrus
 Secretary
 Peggy Smith
 Assistant Secretary
 Frances Key

MOTTO

The most you can make of yourself
 is the least you can afford to be.

COLORS

Rose and White

FLOWER

White Gardenia

MASCOTS

Hilda Hardy
 Charles Goins

Wisdom is the right use of knowledge. To know is not to
 to be wise. Many men know a great deal, and are all
 the greater fools for it. There is no fool so great a fool
 as a knowing fool. But to know how to use knowledge is
 to have wisdom.

Spurgeon



SENIORS

ELSIE BLEDSOE

"Pete"

Library Club 3,4; 4-H Club 1,2,3,4; F. H. A. Club 2,3,4; Music Club 1,2; Echo Staff 1,4; Softball 1; Reading Award 1,3; Perfect Attendance Award 1.

JACK JUNIOR BOWMAN

"Rudolph"

Hi-Y Club 3,4; F. F. A. Club 1,2,3,4, Secretary 3; 4-H Club 1,2,3,4; Basketball 2,3,4; Baseball 3,4; Echo Staff, Humor Editor 4; Society Officer, Vice-President 4; Student Government Officer, Boys' Sheriff 4; Superlative.

JESSIE ALBERTIS BOYLES

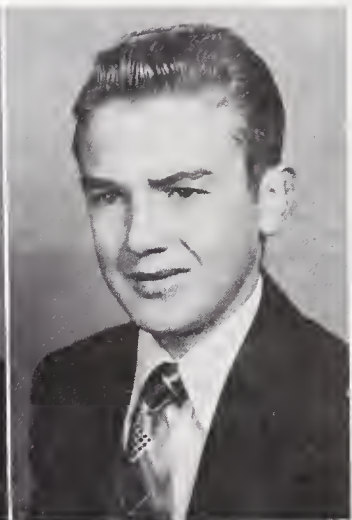
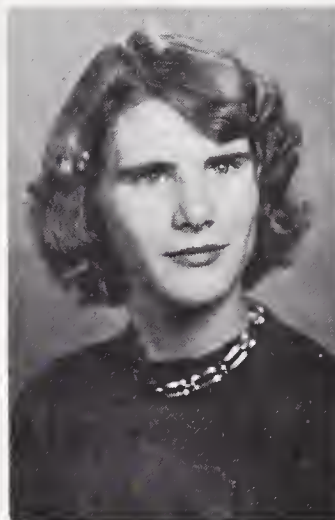
"Sweet Albertis"

Beta Club 4; Tri-Hi-Y Club 2,3,4; Glee Club 3,4; F. H. A. Club 2,3,4; Music Club 1,2; 4-H Club 1,2,3,4; Library Club 2,3; Sanitation Squad 2; Superlative.

RANDALL BRYANT

"Randy"

4-H Club 1,2,3,4; Hi-Y Club 2,3,4; F. F. A. Club 1,2,3,4; Boy Scouts 1,2; Basketball 3,4; Baseball 3; Society Officer, President 4; Class Officer, President 4; Echo Staff, Sports Editor 4; Honor Council 1,2,4; Bus Driver 4; Superlative.



ROBERT TILDEN BURRUS

"Pra"

Hi-Y Club 2,3,4, Treasurer 4; Beta Club 2,3; Boy Scout 1,2; F. F. A. Club 1,2,3,4, President 4, Reporter 3, State Farmer 4; 4-H Club 1,2,3,4; Substitute Bus Driver 4; Varsity Basketball 4; Marshal 3,4; J. V. Basketball 3; Varsity Baseball 3,4; Echo Staff, Co-Editor 4; Annual Staff 3; Class Officer, Vice-President 1,4; Honor Council 3,4; Honor Roll 1,2,3,4; Superlative.

DEE CALLAHAN

Beta Club 4; 4-H Club 1; F. F. A. Club 1,2,3,4; Basketball 3,4; Football 1; Echo Staff, Typist 4; Sanitation Squad 1; Substitute Bus Driver 3,4; Honor Roll; Typing Award 3,4; Superlative.

AGNES JOHNSON CARLYLE

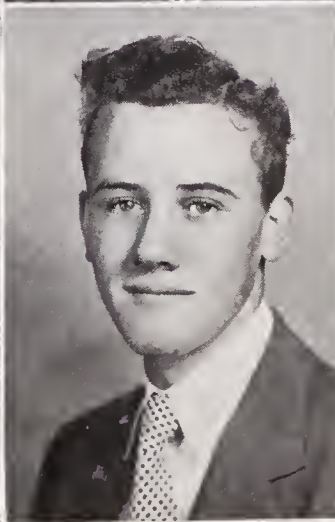
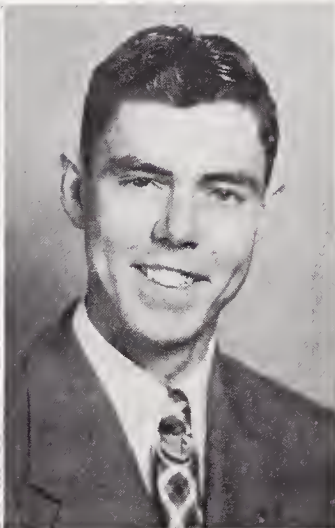
"Aggie"

Tri-Hi-Y Club 2,3,4; Beta Club 3,4; F. H. A. Club 2,3,4; Glee Club 1,2,3,4; Library Club 3,4, President 4; Music Club 1; Echo Staff, Business Manager 4; Windswept Echoes Staff, Activities Editor 4; Society Officer, Chaplain 4; Class Officer, Chaplain 1,2; Typing Award 3; Perfect Attendance Certificate 3; Honor Roll 3,4; Superlative.

JIMMIE ALLEN CREED

"Jim"

F. F. A. Club 1,2,3,4; 4-H Club 1,2,3,4; Junior Varsity Basketball 3; Football 1,2; Student Government Officer 4; Patrol Squad 2,3,4; Bus Driver 4; Superlative.



SENIORS



NORMA COLLINS
"Shorty"

Beto Club 4; 4-H Club 2,3,4; F. H. A. Club 3,4, Reporter 4; Library Club, Secretary 4; Echo Staff, Activities and Society Editor 4; Marshal 3,4; Honor Roll 1,2,3,4; Cammercial Award 3; Reading Award 1; Superlative.

GILMER FLIPPIN
"Flip"

Hi-Y Club 2,3,4, President 4; Beto Club 3,4, President 4; 4-H Club 1,2,3,4; Annual Staff, Business Manager 4; Bus Driver 4; Vice-President Student Government 4; Morshol 3,4; Closs President 1,2,3; Superlative.

PATSY FLIPPIN
"Pat"

Beta Club 3,4, Sangleader 3, Assistant Secretary and Treasurer 4; Tri-Hi-Y Club 1,2,3,4, Vice-President and Song Leader 2; 4-H Club 1,2,3,4; F. H. A. Club 2,3,4; Library Club 2; Music Club 1,4; Glee Club 2,4; Echo Staff, Co-Editor 4; Windswept Echoes Staff 3,4, Advertising Manager 3, Statistician 4; Society Officer 3; Class Officer 3,4, Secretary and Treasurer 3; World Peoce Speaking Contest Winner 3; Honor Council 1,2; Hanor Rall 1,2,3,4; Superlative; W. C. T. U. Speech Contest 3.

CARL GARDNER
"Burr Head"

Hi-Y Club 2,3,4, Treasurer 3, Vice-President 4; F. F. A. Club 1,2,3,4; Treasurer 1,4; 4-H Club 1; Boy Scouts 1,2; Society Officer, President 4; Bosketboll 3,4, Captain 4; Boseboll 3,4; Echo Staff, Sports Editor 4; Bus Driver 4; President of Student Government 4; Typing Award 3,4; Superlative.



PEGGY HARBOUR
"Peg"

Tri-Hi-Y Club 1,2,3,4; President 4; Pianist 3; Girl Scouts 1,2, President 2, Reporter 1; Glee Club 1,2,3,4; 4-H Club 1,2,3,4, Ca-Secretary 4, Pianist 1,2,3; Beta Club 3,4, Pianist 3; Music Club 1,2,3,4; F. H. A. Club 2,3,4, Histarion 4; Varsity Basketball Manager 1,2; Junior Vorsity Basketball, Captain 1; Softball 1,2; Society Officer, Pianist 1,2,3,4; Cheerleader 3,4, Chief 4; Windswept Echoes Stoff, Editor-in-Chief 4, Stotistician 3; Echo Staff, Sports Editor 4; President of Class 1; Hanar Council 1,2,3; Student Government Officer, Assisont Secretary 4; Honor Roll 1,2,3,4; Superlative.

KAY FRANCES HARDY
"Katie"

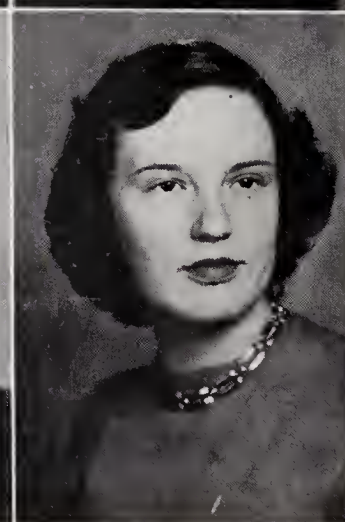
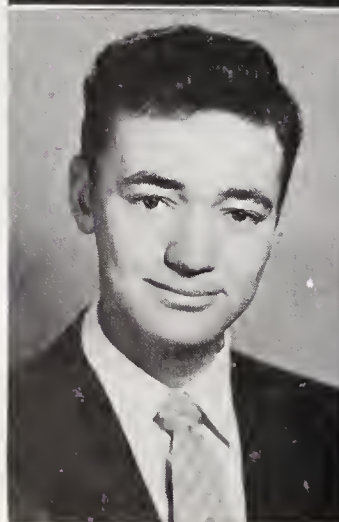
Tri-Hi-Y Club 2,3,4; 4-H Club 1,4; F. H. A. Club 2,3,4; Society Officer, Secretary 4; Glee Club 1,2,3,4; Beto Club 4; Librory Club 4; Windswept Echoes Staff, Arts Editor 4; Echo Staff, Circulation Monoger 4; Class Officer, Choplain 4; Typing Award 3; Honor Roll 4; Superlative.

JOHN D. HARDY
"Shorty"

Beta Club 4; F. F. A. Club 1,2,3,4, Treasurer 2, Vice-President 4; Hi-Y Club 3,4, Secretary 4; 4-H 1,2,3,4, Officer 4; Boy Scouts 1,2; Bus Driver 4; Class President 1; Class Treadure 2; Hanor Roll 3; Honor Council 2,3; Carolino Farmer 3; Superlative

BETTIE JEAN KEY
"Bet"

Tri-Hi-Y Club 1,2,3,4, Vice-President 4; Beto Club 3,4; Glee Club 1,2,3,4, President 4; F. H. A. Club 2,3,4, Program Choirmon 4; Library Club, Vice-President 4; 4-H Club 1,2,3,4; Music Club 1; Wind-swept Echoes Staff, Photagrophic Editor 4; Student Government Officer Girl; Sheriff 4; Superlative.



SENIORS

FRANCES KEY

"Fran"

4-H Club 1, 2, 3, 4, Song Leader 2, Ca-President 4; F. H. A. Club 2, 3, 4, Vice-President 4; Tri-Hi-Y Club 2, 3, 4, Secretary 2, 3; Glee Club 1, 2, 3, 4, Secretary 3; Society Officer, Pianist 3, Song Leader 4; Beta Club 3, 4; Music Club 1, 2; Saftball 1; Echa Staff, Social Editar 4; Secretary of Student Government 4; Marshal 4; Class Officer, Secretary 1, Assistant Secretary 3, 4, Song Leader 2; County 4-H Award 3, 4; Typing Award 3; Reading Certificate 1, 2, 3, 4; Hanar Roll 1, 2, 3, 4; Superlative.

BESSIE MATTHEWS

"Bess"

Tri-Hi-Y Club 2, 3, 4; Beta Club 3, 4; F. H. A. Club 2, 3, 4; Glee Club 1, 2, 3, 4; 4-H Club 2; Society Officer, Assistant Secretary and Treasurer 4; Honar Rall 3, 4; Typing Award 3; Superlative.

VIOLET IMOGENE O'NEAL

"Vie"

Tri-Hi-Y Club 2, 3, 4; 4-H Club 1, 2, 3, 4; F. H. A. Club 2, 3, 4; Glee Club 1, 2, 3, 4; Society Officer 4; Library Club 2; Echa Staff, Circulation Manager 4; Beauty Queen 2; Superlative.

JOE BILL NICHOLS

"Bill"

F. F. A. Club 1, 2, 3, 4; 4-H Club 1; Juniar Varsity Basketball 3; Basketball Manager 3; Baseball 3; Sanitatian Squad 1; Patral Squad 2, 3; Honar Council 4; Superlative 4.



CAROL FRANCES SCOTT

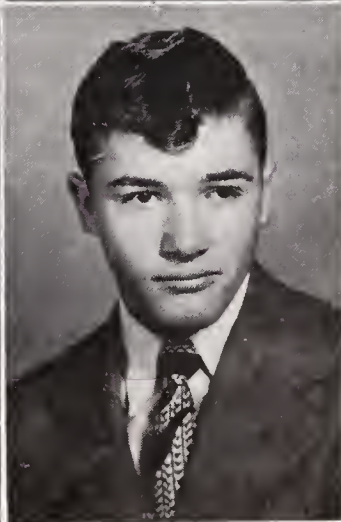
"Carolee"

Tri-Hi-Y Club 1, 2, 4; Beta Club 4; F. H. A. Club 1, 2, 4; Library Club 4; Society Officer, Secretary 4; Echa Staff Circulation Manager 4; Hanar Council 4; Typing Certificate 3; Superlative.

MAXINE SIMPSON

"Mac"

Beta Club 3, 4, Vice-President 4; Tri-Hi-Y Club 1, 2, 3, 4; F. H. A. Club 2, 3, 4; Glee Club 1, 2, 3, 4; Library Club 4; 4-H Club 1, 2, 3, 4; Basketball 1; Saftball 1; Hanor Council 4; Hanor Rall 2, 3, 4.



PEGGY KEY SMITH

"Peg"

Beta Club 3, 4, Secretary and Treasurer 4; 4-H Club 1, 2, 3, 4, Ca-Secretary 4; F. H. A. Club 2, 3, 4, Parliamentarian 2, Secretary 4; Tri-Hi-Y Club 1, 2, 3, 4, President of Juniar Tri-Hi-Y 2; Glee Club 1, 2, 3, 4; Music Club 1, 2, 3; Class Secretary 1, 4; Class Vice-President 3; Chief 4; Marshal 3, 4; Honar Rall 1, 2, 3, 4; Superlative.

JAMES ALLEN VENABLE

"Hoot Owl"

F. F. A. Club 1, 2, 3, 4; 4-H Club 1, 2, 3, 4; Hi-Y Club 2, 4; Basketball Juniar Varsity 3; Echo Staff, Humar Editar 4; Substitute Bus Driver 4; Class Treasurer 1; Honar Council 2, 4; Hanar Roll 1, 2, 3, 4; Typing Award 2, 3, 4; Superlative.

SENIORS

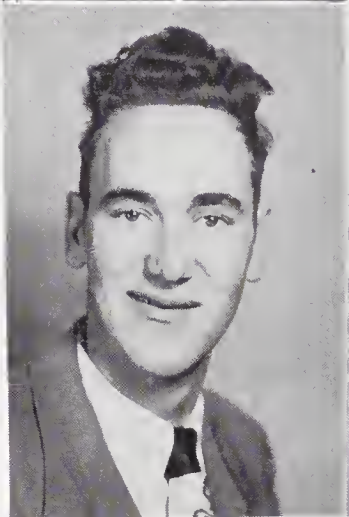


KATHRYN SHORE WHITAKER
"Kat"

Beta Club 3, 4; 4-H Club 1, 2, 3, 4; F. H. A. Club 2, 3, 4, Treasurer 3, 4; Glee Club 1, 2, 3, 4; Tri-Hi-Y Club 1, 2, 3, 4; Music Club 1; Hanar Council 4; Hanar Roll 3, 4; Marshal 3, 4.

PAYGE GERALDINE WHITAKER
"Peggy"

Beta Club 3, 4; Tri-Hi-Y Club 1, 2, 3, 4; Glee Club 1, 2, 3, 4, Vice-President 4; F. H. A. Club 2, 3, 4, President 4; 4-H Club 1, 2, 3, 4, President 4; Basketball 1, 2, 4; Softball 1, 2; Windswept Echoes Staff, Commercial Editor 4; Class Officer, Secretary and Treasurer 2, Song Leader 1; Student Government Officer, Assistant Girls' Sheriff 4; Marshal 3, 4; Hanar Roll 3, 4; Superlative.



WILLIAM MARKUS WOOD
"Bill"

F. F. A. Club 3, 4; Student Government Officer 4; Honor Roll 4; Bus Driver 4; Superlative.

SENIORS SUPERLATIVES

Best All Around.....	Tilden Burrus and Patsy Flippin
Most Intellectual	Gilmer Flippin and Bessie Matthews
Most Popular.....	Carl Gardner and Peggy Harbour
Best Looking-Prettiest.....	Randall Bryant and Violet O'Neal
Wittiest.....	Bill Wood and Carol Scott
Most Athletic.....	Jack Bowman and Payge Whitaker
Most Likely to Succeed	Tilden Burrus and Patsy Flippin
Neatest	Randall Bryant and Agnes Carlyle
Best Sport	Carl Gardner and Peggy Harbour
Most Courteous.....	John Hardy and Betty J. Key
Best Personality.....	Jimmy Creed and Frances Key
Quietest	Joe Nichols and Norma Collins
Cutest.....	Jack Bowman and Kaye Hardy
Most Talented	John Hardy and Frances Key
Most Serious Minded.....	Gilmer Flippin and Peggy Smith
Most Dependable.....	Dee Callahan and Peggy Smith
Most Studious.....	Dee Callahan and Bessie Matthews
Most Cheerful.....	Allen Venable and Jessie Boyles
Most Industrious	Joe Nichols and Agnes Carlyle

SENIORS



MARSHALS

Peggy Smith, Chief; Kathryn Whitaker, Payge Whitaker, Gilmer Flippen, Tilden Burrus, Frances Key, Norma Collins.

SENIOR SUPERLATIVES



MOST POPULAR

Carl Gardner
Peggy Harbour



PRETTIEST AND
MOST HANDSOME

Violet O'Neal
Randall Bryant



BEST PERSONALITY

Frances Key
Jimmy Creed

SENIOR SUPERLATIVES



MOST INTELLECTUAL

Bessie Matthews
Gilmer Flippen



MOST ATHLETIC

Payge Whitaker
Jack Bowman

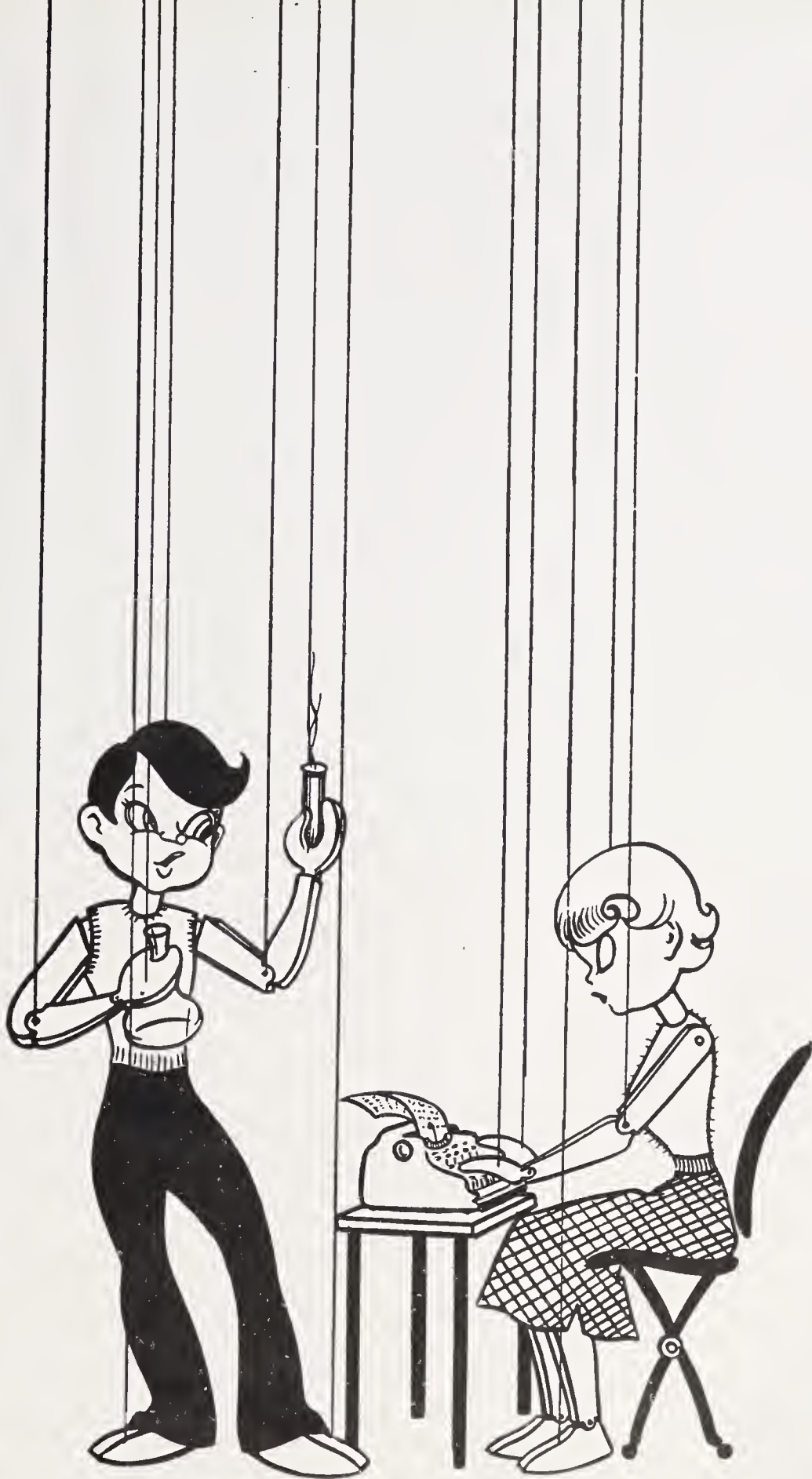


BEST ALL ROUND

Patsy Flippen
Tilden Burrus

SENIOR SNAPSHOTS





Underclassmen

JUNIORS



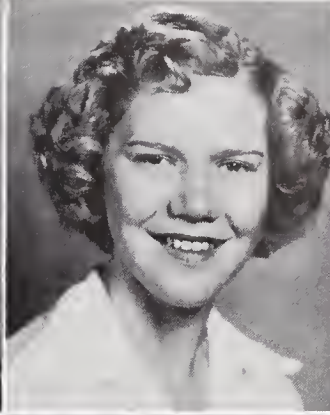
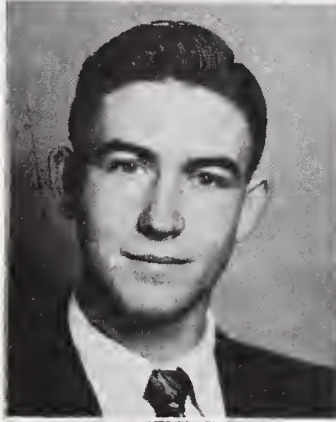
JUNIOR OFFICERS

President..... Joe Holyfield
Vice-President..... Richard Evans
Secretary..... Glenda Hardy
Assistant Secretary..... Glenda Riddle



JUNIORS

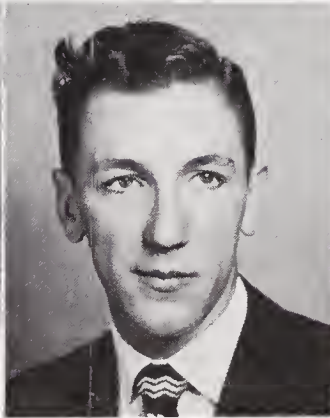
J. C. Boyles
Shirley Bledsoe
Robert Brown



Dennis Coe
Phyllis Coe
Josephine Collins



Beatrice Creed
Jimmy Davis
Nora Jean Davis



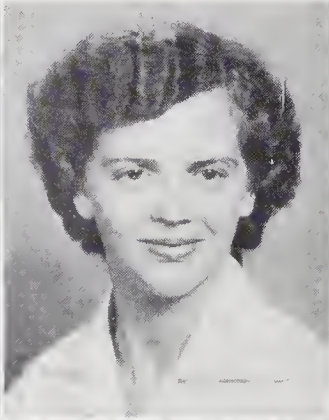
Carlene Evans
Richard Evans
Lois Fowler



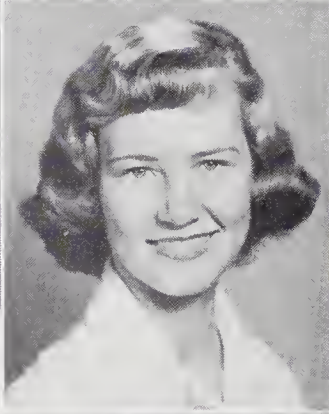
Ellen Graham
Mary Ruth Harbour



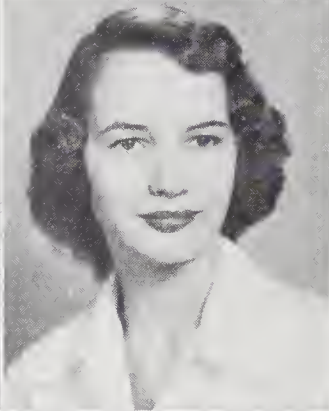
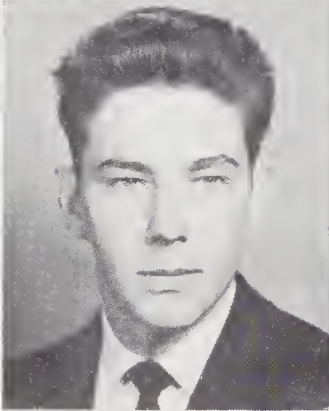
JUNIORS



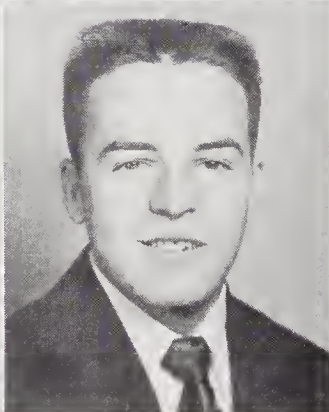
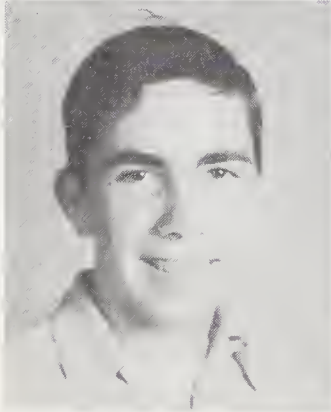
Pearl Harbour
Glenda Hardy
Viola Hardy



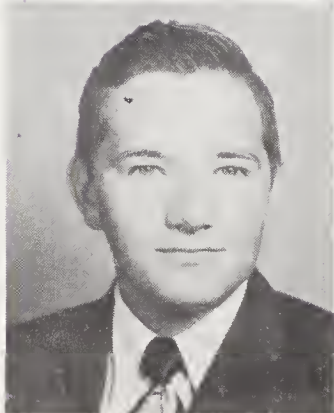
Joe Holyfield
Faye Johnson
Ganelle Key



June Key
Bud Marion
Betty Martin



Bobby McCormick
Marie McCormick
Walter Nichols



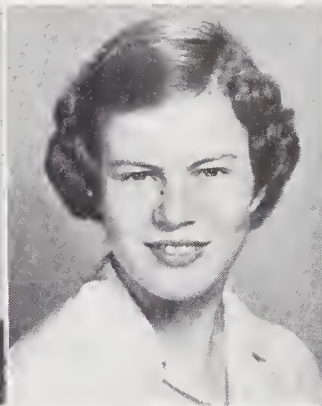
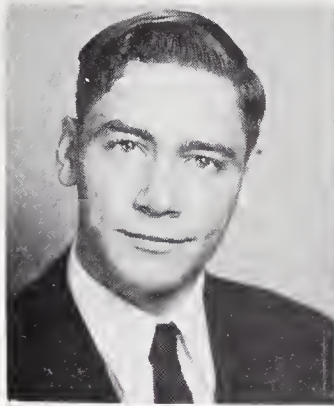
Jim O'Neal

JUNIORS

Jack Pratt

Shirley Reynolds

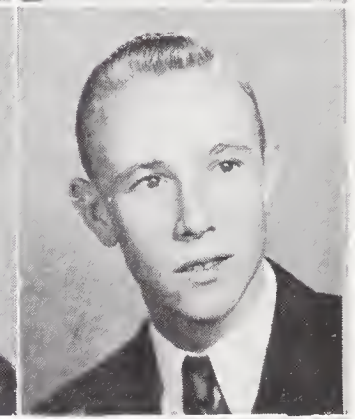
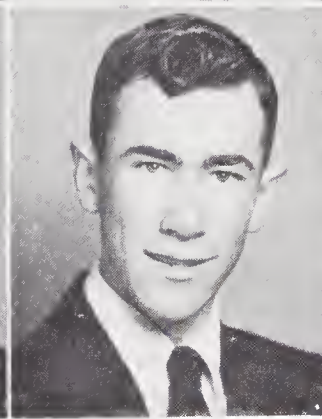
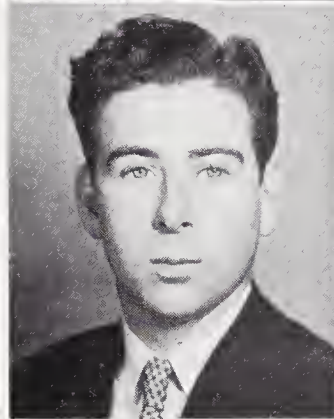
Glenda Riddle



Billy Ring

James Sawyers

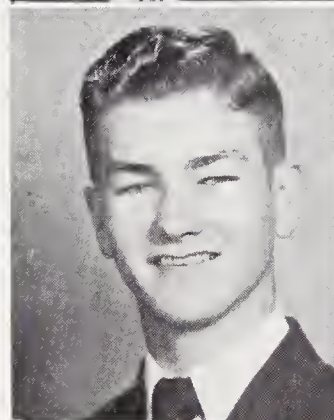
Bill Scott



Darrell Simpson

Shirley Tucker

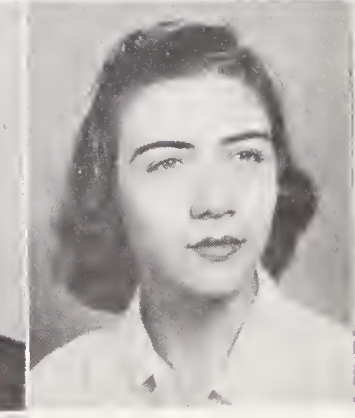
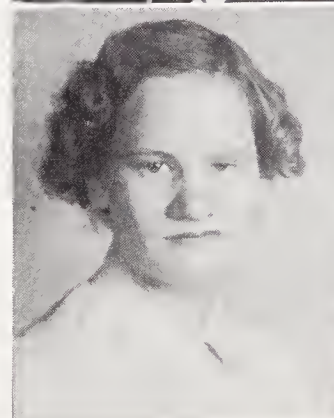
Barbara Wall



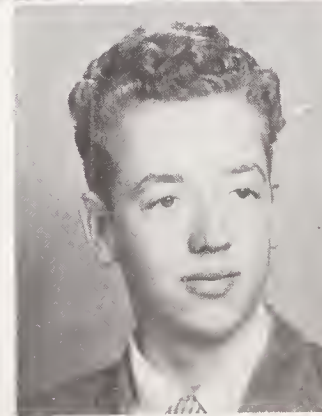
Bernice Wall

Russell Whitt

Maurine Wolfe



Jack Wood



JUNIOR SNAPSHOTS





OFFICERS

Presidents.....Nancy Harbour, Jarvis Flippen
Vice-Presidents.....Kaye Stanley, Billy J. Marion
Secretaries.....Shelba Johnson, Arnold Doby
Treasurer.....Avanell Johnson



FRESHMEN



Boys - MR. NANCE

Girls - MRS. REID





Activities

ACTIVITIES

BETA CLUB



OFFICERS

President.....Gilmer Flippen
Vice-President.....Maxine Simpson
Secretary.....Peggy Smith





ECHO
STAFF

OFFICERS

Co-Editors-in-chief.....Patsy Flippen, Tilden Burrus
 Business Manager.....Agnes Carlyle
 Circulation Managers.....Carol Scott, Kay Hardy

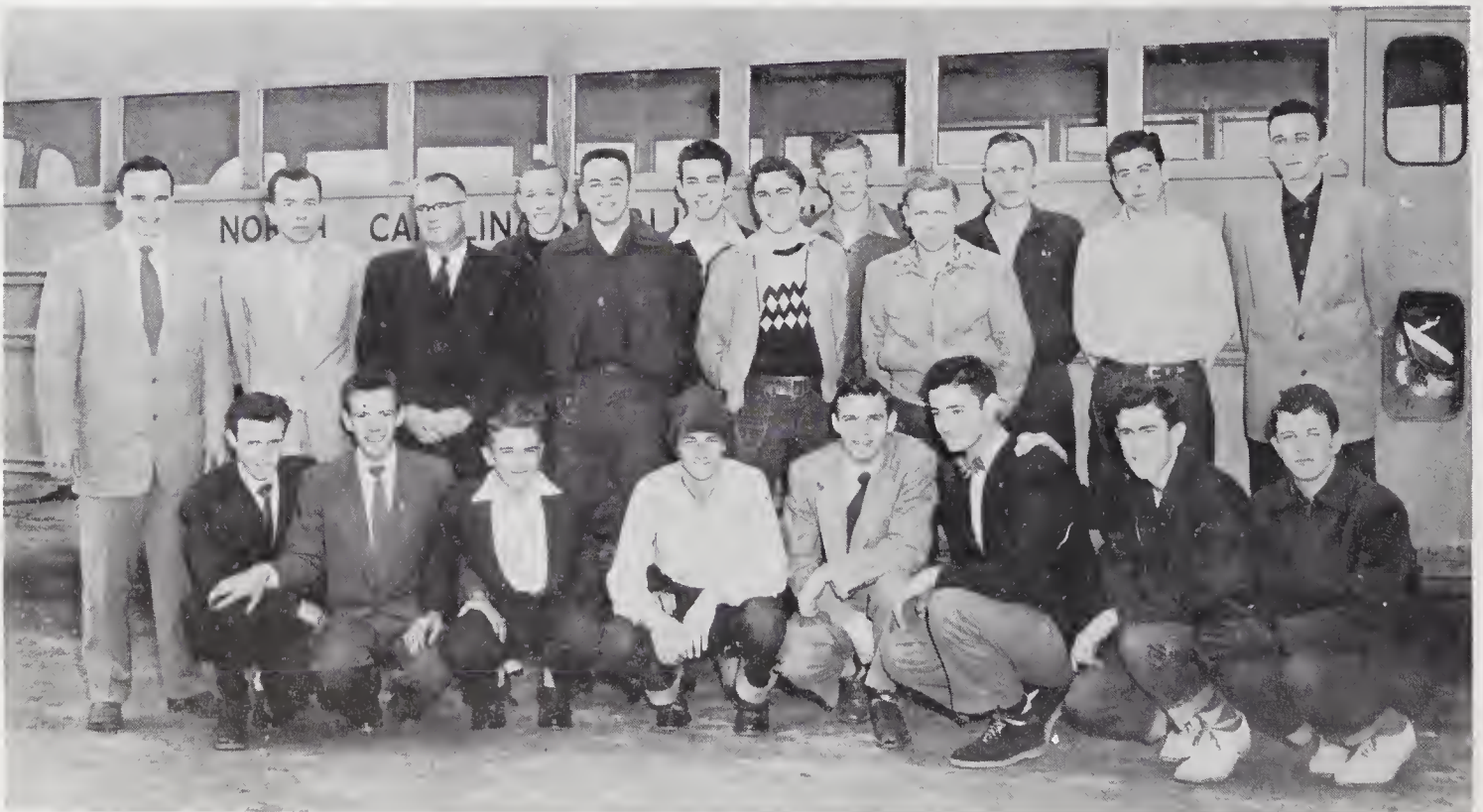


ACTIVITIES



TRI-HI-Y OFFICERS

Presidents.....Peggy Harbour, Nancy Harbour
 Vice-Presidents.....Betty Jean Key, Frances Moore
 Secretaries.....Frances Key, Jo Ann Ring



HI-Y OFFICERS

President.....Gilmer Flippen
 Vice-President.....Carl Gardner
 Secretary.....John Hardy

ACTIVITIES



WINDSWEPT ECHOES

Business Manager, Gilmer Flippen; Photographic Editor, Betty Jean Key; Editor-in-Chief, Peggy Harbour; Junior Editor, Ellen Graham; Managing Editor, Frances Key.



STUDENT GOVERNMENT

Student Government Officers: President, Carl Gardner; Vice-President, Gilmer Flippen; Secretary, Frances Key; Assistant Secretary, Peggy Harbour; Boys' Sheriff, Jack Bowman; Assistants, Billy Wood, Jimmy Creed; Girls' Sheriff, Betty Jean Key; Assistant, Payge Whitaker.

ACTIVITIES



GLEE CLUB

President Betty Jean Key
Vice-President..... Payge Whitaker

Director.....Mrs. Graham
Accompanist.....Mrs. Aima Holyfield

"WILD ROSE"



ACTIVITIES



FUTURE FARMERS OF AMERICA

President Tilden Burrus
Vice-President..... John Hardy
Secretary Jimmy Davis

FUTURE HOMEMAKERS OF AMERICA

President.....Payge Whitaker
Vice-President.....Frances Key
Secretary.....Peggy Key Smith



ACTIVITIES



LIBRARY CLUB

President, Agnes Carlyle; Vice-President, Betty Jean Key; Secretary, Norma Lee Collins.

4-H CLUB OFFICERS

Co-Presidents, Senior Club, Frances Key, Payge Whitaker; Co-Secretaries; Senior Club, Peggy Harbour, Peggy Smith; President, Junior Club, Gail White; Vice-President, Clayton Simpson; Secretary, Rebecca Shinault.



ACTIVITIES



POPULARITY CONTESTANTS



POPULARITY CONTEST WINNERS

Miss Copeland, 1953, Ellen Graham; Escort, Edwin Atkinson; Queen, Grammar Grades, Barbara Jean Davis; King, Grammar Grades, Lonnie Johnson; Queen, Primary Grades, Cynthia Strupe; King, Primary Grades, Ronnie Joyner.

ACTIVITIES

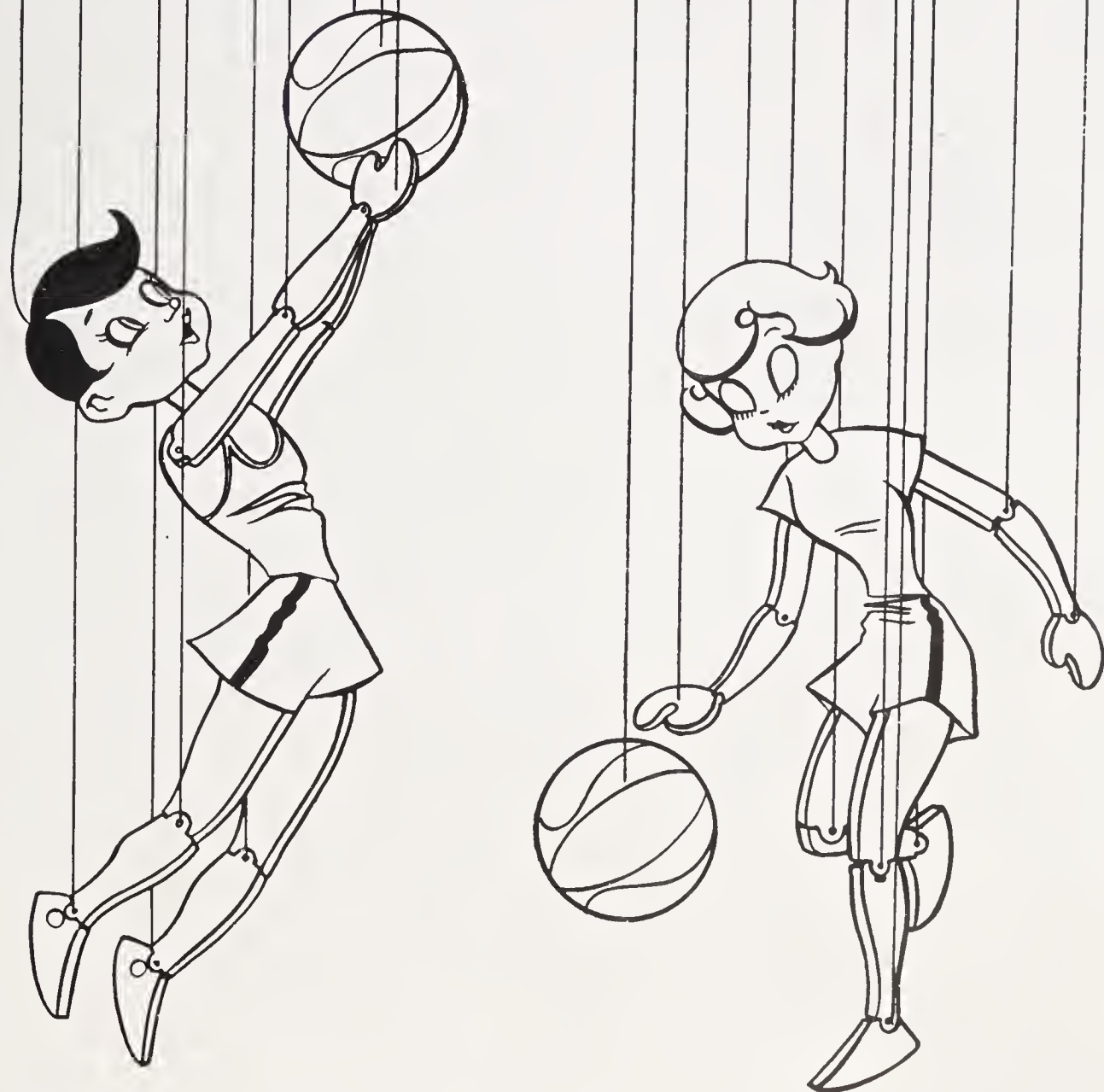


BOYS' SCOUTS

Scoutmaster - Mr. Davis; Student Leader - Jimmy Davis.

BUS DRIVERS





Athletics

ATHLETICS



GIRLS' BASKETBALL

First Row: Betty Martin, Mary Ruth Harbour, Faye Johnson, Payge Whitaker, Decie Key, Nancy Harbour. Second Row: Coach, Wayne Nance; Katie Simpson, Alda Pilson, Kaye Stanley, Betty Jane O'Neal, Jackie Smith, Shirley Speaks, Manager, Janice Layne.

ATHLETICS



BOYS' BASKETBALL

First Row: Robert Brown, Dee Callahan, Carl Gardner, Randall Bryant, Jack Bowman, J. C. Boyles. Second Row: Tilden Burrus, Joe Holyfield, Billy Ring, Bill Scott, Walter Nichols, Jack Pratt. Third Row: Coach, Wayne Nance; Bud Marion, Richard Evans, Jimmy Davis, Manager, Jimmy Creed.

ATHLETICS



MAURINE WOLFE

ELLEN GRAHAM



JANE WOLFE



PEGGY HARBOUR,
CHIEF



CARLENE EVANS

GLEND A RIDDLE



SHIRLEY BLEDSOE

SHIRLEY TUCKER

ATHLETICS



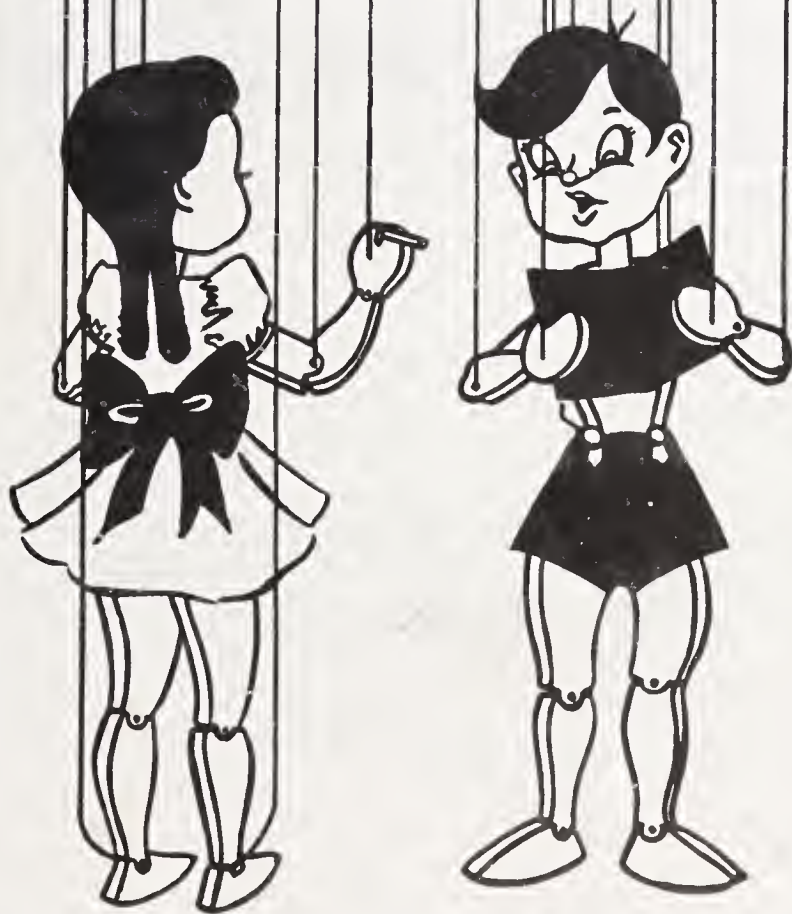
BASEBALL TEAM

SNAPSHOTS



SNAPSHOTS





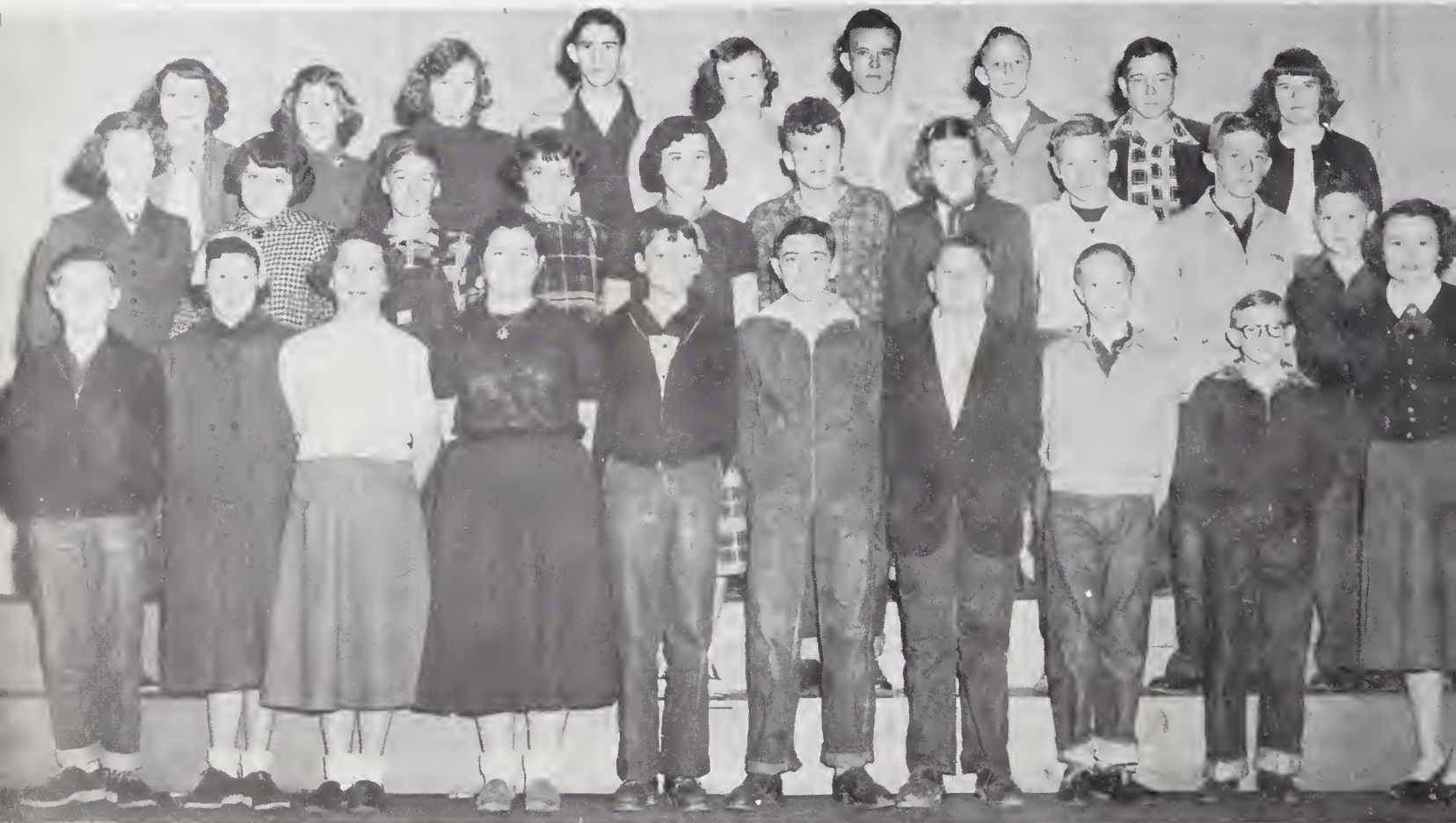
Elementary Grades

ELEMENTARY FACULTY



Martin Wall, Marthalene Davis, Beulah Grey Perkins, W. D. Reirson, Grace Shinault, Clara Greene, Ida Taylor, Eva Badgett, Annie Burrus, Orin Nance, Bessie Smith, Ora Burrus, Alma Holyfield, Mathie Graham, Creola Holyfield.

EIGHTH GRADE - Mrs. Perkins



EIGHTH GRADE - Mrs. Badgett



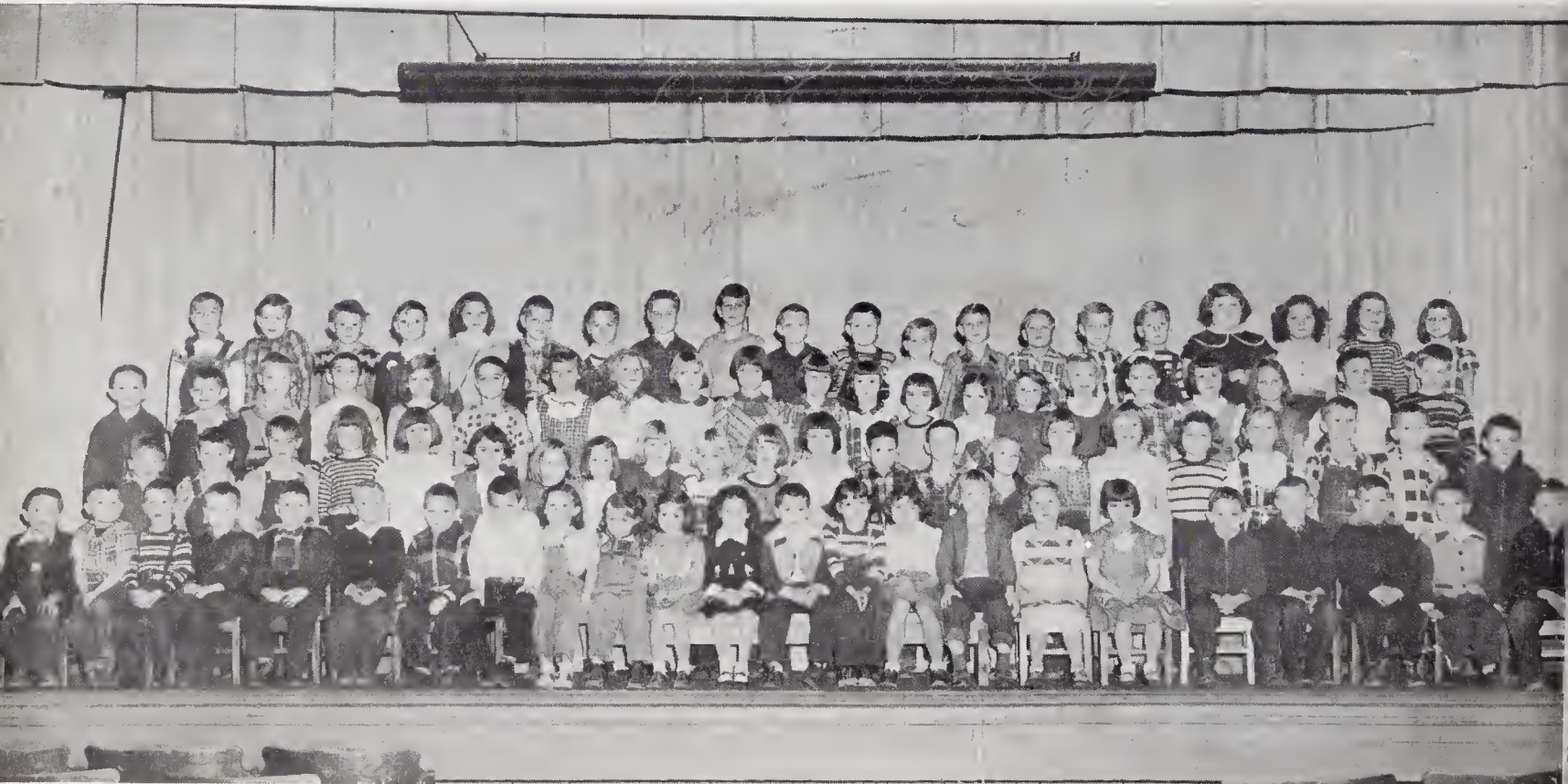
FIFTH, SIXTH AND SEVENTH GRADES



THIRD AND FOURTH GRADES



FIRST AND SECOND GRADES



SNAPSHOTS



AUTOGRAPHS

Carole,

you surely are a sweet girl and I love you so very much.

Always stay as sweet and nice as you are now and you'll find plenty of happiness and success.

Carolyn Reynolds

Shirley Whit

Judy Martin

Best Wishes,

Mrs. Mathie Graham

Phill Whitaker

Calvin Moore

Larry Atkins

Donald Venable

Henry Moseley

Eddie Nelson

Clyde Marion

MacArthur

Oral Wood

Ruth Simmons

Brenda Whitaker

Irene Riggs

Lanny Whitaker

Minnie Lou Taylor

Dorothy O'Neal

Janice Jones Simpson

Tiney Mae Harmon

Shelby Dean Wood

Louise Wood

GREGORY CHEVROLET COMPANY

PILOT MOUNTAIN, NORTH CAROLINA

Phone 1

SALES
USED CARS

SERVICE
USED TRUCKS

RING'S PLUMBING & ELECTRIC

GROCERIES, GAS AND OIL

At Copeland School

Telephone 672

Dobson, North Carolina

SURRY TRACTOR COMPANY

Elkin, North Carolina

Ford Tractors
Dearborn Farm Equipment
New Idea, Papec
Mall Chainsaws
Conde Milking Machines

CITIES
SERVICE

CITIES
SERVICE

YORK OIL COMPANY

Kerosene — Fuel Oil for the Home

CITIES SERVICE TIRES, TUBES, AND BATTERIES

ALSO U. S. ROYAL TIRES AND TUBES

Phone 1640-J

WHITE PLAINS, NORTH CAROLINA

**PEELE AND THOMPSON
RADIO & APPLIANCE CO.**

Emerson, R. C. A., Sylvania,
Zenith Radio; Bendix—
Gibson Home Appliances
135 West Main St. Elkin, N. C.

A Good Drug Store
ABERNETHY'S PHARMACY

THE REXALL STORE
Elkin, North Carolina

Compliments of
DUKE POWER CO.

Elkin, North Carolina

Compliments of
BANK OF ELKIN

Member of
Federal Deposit Insurance
Corporation
Elkin, North Carolina

GRAHAM-CLICK

5-10 STORE
Headquarters for School Supplies
Elkin, North Carolina

Compliments of
HOLCOMB BROTHERS

Plumbing and Heating
Phone 254
Elkin, North Carolina

SUPER TIRE SERVICE

A. DAN HUDSPETH, Owner
689 North Bridge—Phone 246
Elkin, North Carolina
Firestone Tires and Tubes
John Bean Wheel Aligning
and Balancing
Factory-Method Recapping
and Vulcanizing

HADLEY HARBOUR

Your Local Merchant
Shell Gas and Oil
Hardware, Groceries and Shoes
Level Cross, North Carolina

HERFF-JONES COMPANY

RINGS — INVITATIONS — TROPHIES — MEDALS

E. W. Paddison, Representative

MOUNT AIRY

NORTH CAROLINA

Compliments of

SPAINHOUR'S

A MODERN DEPARTMENT STORE

ELKIN

NORTH CAROLINA

BOAZ MOTOR COMPANY

Maytag Washers — Sales and Service

ADMIRAL APPLIANCES

ESSO PRODUCTS

H. K. Swanson, Jr.

R. J. Boaz

Compliments of

PILOT THEATRE

and

PILOT DRIVE-IN THEATRE

Pilot Mountain, North Carolina

Compliments of

NEW DEAL LUNCH

SANDWICHES

Pilot Mountain, North Carolina

CITY CAFE

Phone 234

Pilot Mountain, North Carolina

BANK OF PILOT MOUNTAIN

Pilot Mountain, N. C.

A Safe and Friendly Institution

Deposits Insured to \$10,000

WILLIAMS BODY SHOP

WHEEL ALIGNMENT

PAINT AND BODY WORK

Pilot Mountain, North Carolina

Compliments of

BASKETERIA STORE

FRESH MEATS AND GROCERIES

Elkin, North Carolina

VAN COX, FLORIST

Phone 159-R

Pilot Mountain, North Carolina

ESSO
KEROSENE

ESSO
FUEL OIL

CLEAN FLOWING — CLEAN FIRING — CLEAN BURNING
WILL NOT CORRODE BURNER PARTS

TESTED 14 WAYS

For Uniform Quality and Heating Efficiency
Use Economical Esso Heating Oil — It's High

For Prompt Service Call Mt. Airy 629

HARRELL OIL COMPANY

MOUNT AIRY, NORTH CAROLINA

**THE NORTH CAROLINA
GRANITE CORPORATION**

SINCE 1889

WHITE MT. AIRY GRANITE — QUARRIED AND MANUFACTURED

MOUNT AIRY

NORTH CAROLINA

HODGES CAFE

Short Orders — Sandwiches

Quick Service

Phone 982

Dobson, North Carolina

WILLIAM D. WEIMAR, INC.

Manufacturers of Narrow Fabrics

Dobson, North Carolina

**AUSTIN-BLACKWELDER
FURNITURE CO., INC.**

"The Home of Quality Furniture
for Less Money"

Phone 521

Dobson, North Carolina

DOBSON HARDWARE CO.

Phone 921

Dobson, North Carolina

SURRY INSURANCE AGENCY

Dobson, North Carolina

J. T. Threatte, Mgr.

W. Frank Comer, Asst. Mgr.

For All Your Insurance Needs

BEASLEY CLEANERS

For the Best in Service

Phone 442

Dobson, North Carolina

A. A. TAYLOR

Feeds, Seeds, and Groceries

Gulf Gasoline, and Oils

Ararat, Route 1,

North Carolina

**GILLISPIE GROCERY
AND SERVICE STATION**

Shell Gas and Oil

Fairview, North Carolina

CHATHAM MFG. COMPANY

Elkin, North Carolina

"CHATHAM MAKES GOOD BLANKETS"

Congratulations and Best Wishes to All You Young Students
From Your Friendly Ford Dealer

GRANITE CITY MOTOR COMPANY, INC.

AUTHORIZED FORD DEALER

Phone 310

137 North Main Street

Mount Airy, North Carolina

Thick Milk Shakes at

MARION'S RESTAURANT

PIT BAR-B-QUE — SANDWICHES — PLATES

1111 North Bridge Street

Elkin, North Carolina

THE SURRY COUNTY LOAN & TRUST COMPANY

"There Are Larger Banks, But None Safer"

Each Deposit Insured for \$10,000

Through Federal Deposit Ins. Corp.

Member of Federal Deposit Insurance Corporation

Mount Airy, N. C.

Dobson, N. C.

**CAMPBELL MONUMENTAL
WORKS**

444 South Main Street

It Pays to Come a Long Ways to

Trade With Us

Day Phone 1402

Night Phone 1422

SOUTHERN GAS SERVICE

Bottled Gas

Heating

Cooking

Tobacco Curing

Mount Airy, North Carolina

Compliments Seniors

**BELTON'S LAUNDRY AND
DRY CLEANING CO.**

238 South Main Street

Mount Airy, North Carolina

Compliments of

W P A Q

Surry First and Most

Powerful Station

740 KC

1,000 Watts

Mount Airy, North Carolina

GMC Trucks – Packard Cars

BRITTS MOTOR CO.

Mount Airy, North Carolina

Phone 542

FEDDON MOTOR CO.

New and Used Cars

Mount Airy, North Carolina

Office Phone 1040

FEDERAL MOTOR EXPRESS

Phone 744

Box 111

300 Willow Street

Mount Airy, North Carolina

Compliments of

TRIO KNITTING MILL

Mount Airy, North Carolina

IDEAL BEAUTY SHOPPE

Best in Hairstyling, Permanent Waving,
and All Lines of Beauty Work.

DOROTHY ROSE, Owner

Phone 689

OVER HARRISON'S
Mount Airy, North Carolina

INDEPENDENT CAB CO.

2-Way Radio—Located on Franklin St.

Phone 291

Mount Airy, North Carolina

GEO. W. SPARGER, JR.

Insurance — Real Estate — Rentals

Phone 224

Mount Airy, North Carolina

SPARGER INSURANCE AGENCY

M. H. and M. F. Sparger
Fire, Automobile and Casualty
Lines

110 Franklin Street
Mount Airy, North Carolina

Established 1933

FOWLER MOTOR COMPANY

Dodge and Plymouth Cars
Dodge "Job-Rated" Trucks
100 South Main St.

Mount Airy, North Carolina

HENNIS AND JONES FUNERAL HOME

24-Hour Ambulance Service

Join Our
Mutual Burial Association

Phone 3 — Mount Airy, N. C.

GRAY HENNIS FRANK JONES

PLANTERS & JONES WAREHOUSES CO.

Tom Jones, Buck White, Frank Jones

Mount Airy, North Carolina

MOODY FUNERAL HOME

Home of
Harrison Mutual Burial Assn.

Phone 65

Wade C. Moody — Dennis W. Moody

121 Franklin Street
Mount Airy, North Carolina

Compliments of



"A COMPLETE FAMILY SHOE STORE"

Mount Airy, North Carolina

**BLUE RIDGE INSURANCE
AGENCY**

Insurance for Every Need

R. P. JONES

E. C. COLLINS

Phone 402

Mount Airy, North Carolina

Compliments of

BOWMAN ELECTRIC CO.

Home Appliances

Radio and Television

113 Pine St.

Mt. Airy, N. C.

TAYLOR'S GARAGE

Auto Repairing and Welding

Wrecker Service

Phone 492

Mount Airy, North Carolina

**J. J. SHACKLEFORD
SHOE SHOP**

128 North Main Street

Mount Airy, North Carolina

Men's and Women's

ALL WORK GUARANTEED

**H. L. EQUIPMENT
COMPANY, INC.**

Dobson, North Carolina

Manufacturers of High Grade

Children's and Misses' Hosiery

RENFRO HOSIERY MILLS

Mount Airy, North Carolina

MATHIS JEWELRY STORE

Elgin — Hamilton — Bulova
Crystal — China — Silver

Your Dollar Buys More
at Mathis Jewelry Store

Phone 2341 or 2731

Boonville, North Carolina

IDEAL MONUMENTAL WORKS

Your "Rock of Ages" Dealer
Mount Airy, N. C.
Display and Office Opposite
Y. M. C. A.
Plant Located on Quarry Road
Plant Phone 1608-R

E. C. HARBOUR INSURANCE AGENCY

Your Local Agent
Life, Fire, Auto and Hospital
Level Cross, North Carolina

C. W. STEELE JEWELER

Watches — Diamonds — Silverware
Chinaware — Glassware
Elkin, North Carolina
Mount Airy, North Carolina

F. W. CHEVROLET COMPANY

SUPER SERVICE
Twenty-Four-Hour Wrecker
Service
Elkin, North Carolina

WHITE BROTHERS

Cinder Blocks, Building Materials
and Plumbing Supplies
Phone 627
Jonesville, North Carolina

HENSEL LUMBER COMPANY

Elkin, North Carolina

GIB WOLFE'S GENERAL STORE

AMOCO GAS AND OIL
Level Cross, North Carolina

FOWLERS GROCERY

SHELL AND SERVICE
FLOUR AND FEED
Route 4
Mount Airy, North Carolina
Dobson Road

COX FUNERAL HOME

AMBULANCE SERVICE

Telephone 54

Pilot Mountain, North Carolina

SNOW MOTOR COMPANY

YOUR BUICK DEALER

Sales Service

Telephone 613

136 South Bridge St.

Elkin, North Carolina

Try Our Home-Cooked Foods
at the

PILOT INN RESTAURANT

Route 52

Pilot Mountain, North Carolina

ARMTEX, INC.

MANUFACTURERS OF KNIT FABRICS

Pilot Mountain, North Carolina

**MIDKIFF AND CARSON
HARDWARE**

Gibson Refrigerators

Goodyear Tires

Sherwin-Williams Paint

Pilot Mountain, North Carolina

FAIR MAID BEAUTY NOOK

Hair Styling

Shampoo and Permanent Waves

BOONIE G. CAIN, Manager

Pilot Mountain, North Carolina

NEEDHAM FUNERAL HOME

Home of
Needham Mutual Burial
Association

Telephone 9-R

Pilot Mountain, North Carolina

FARMERS BANK

Capital Account \$150,000

Pilot Mountain, North Carolina





