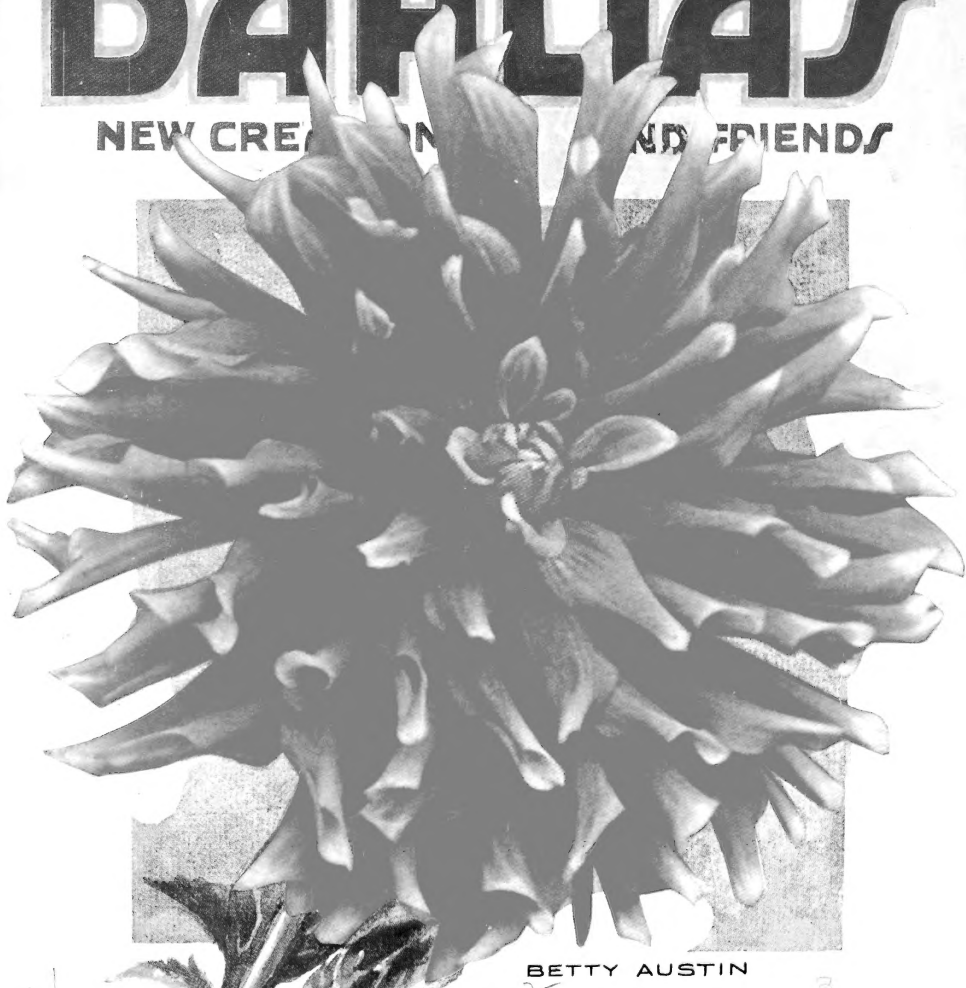


THE WORLDS BEST DAHLIAS

NEW CREATIONS AND FRIENDS

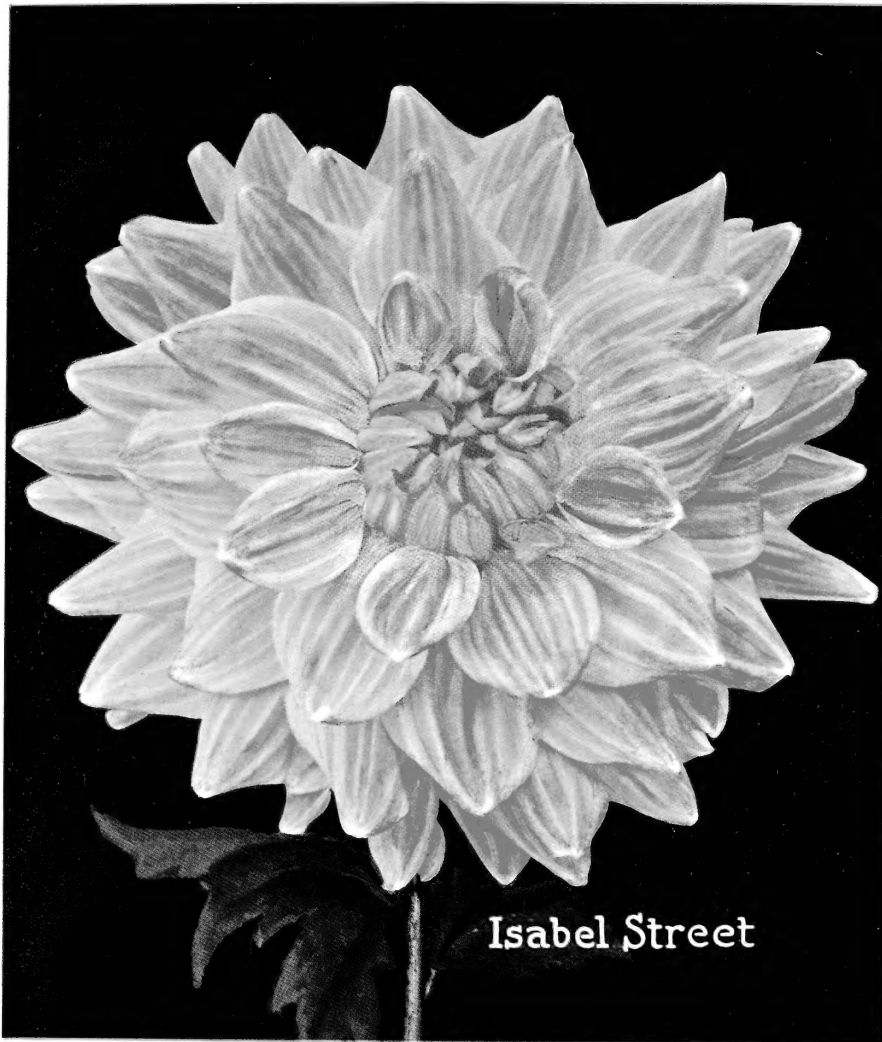


BETTY AUSTIN

PEACOCK DAHLIA FARMS

FARMS
WILLIAMSTOWN JUNCTION
NEW JERSEY

MAIL ADDRESS
BERLIN POST OFFICE
NEW JERSEY

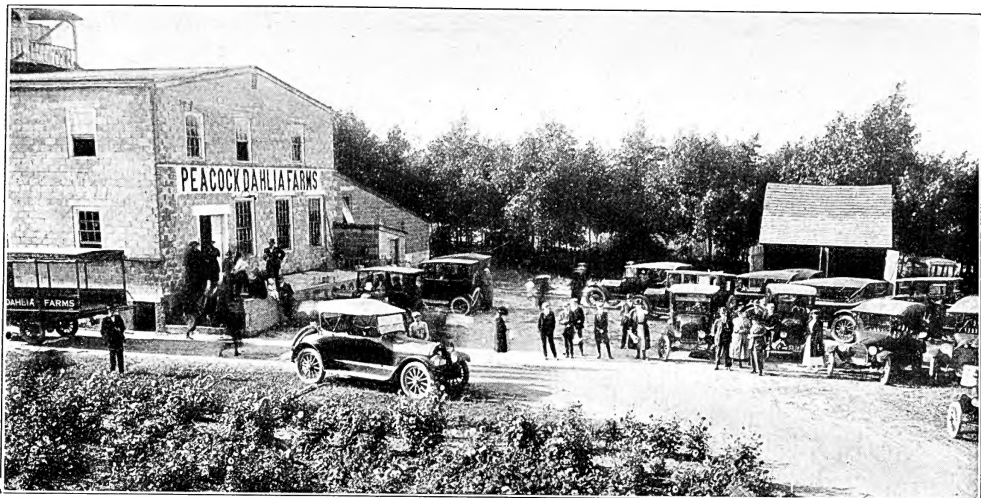


Isabel Street

BETTY AUSTIN Cactus (see natural color reproduction from a photograph on front cover page). A lovely variety that is in a class by itself. Color yellow at base of petal, blending to rosy carmine and rose, yellow at tips; reflex rose. A combination at once pleasing and effective. The flowers are of good size and splendid form, borne erect to facing on long stiff, slender stems, well above the foliage. An early, free and continuous bloomer. The plant is dwarf, 3 to 4 ft. high, of branching habit. A wonderful commercial cut flower and an ideal garden plant. It is entirely distinct and will find its way into every collection. Roots, \$5.00 each.

ISABEL STREET Decorative. A grand new variety that has attracted the greatest attentions of visitors at our farms and wherever exhibited. The flowers are large, extremely full to the center, while the outer petals reflex to the stem. Color at base bright yellow, shading to bright rose red, with white tips; reflex pale pink. The flowers are of heavy texture and borne facing on long cane stiff stems. The plant is strong, vigorous, of upright branching habit, 5 to 6 ft. high, producing the big long stem, blooms freely and continuously. A wonderful exhibition and commercial variety that should be in every collection. An acquisition to every garden, strong plants \$2.00. Roots until exhausted, \$3.00 each.

SPECIAL OFFER. One each of the 4 Colored Cover Dahlias, Betty Austin, Rosalia Styles, Isabel Street and Colossal pink, \$14.50.



"Mecca" of Dahlia Lovers. More than 10,000 visitors weekly at the World's Largest Dahlia Farm

IN thanking our friends and customers for their generous patronage in the past; we also want to extend a cordial invitation to visit our farms next September and October.

We wish every dahlia lover could have seen our fields the past season. "The finest ever" was the unanimous opinion of the tens of thousands of visitors. And truly never before were they quite so fine; **one hundred (100) acres of the World's Best Dahlias.** The hot dry weather seemed to bring out the very finest shades, tints, and colors, and such profusion. We devote acres just to trial grounds, not only to thoroughly test out all varieties, but for the benefit and pleasure of all "dahlia enthusiasts."

On the following pages will be found **the plain truth** describing them as they grow with us, and the average color; for flowers vary in color at different seasons, on different soils, in different climates and under different conditions, so we take our colors at midseason.

We are glad to note the craze for size alone has about run out. A Dahlia now must have more than size to commend it. Of course we all like to exhibit a flower larger than ever before shown, but, nothing can take the place of those brilliantly colored beauties, or those exquisitely formed, delicately tinted, medium or even small sized flowers, with good stiff slender stems, that lend themselves most admirably to all kinds of decorations—garden, home, hall, business establishment or personal adornment. For after all it is only natural to love the beautiful and artistic, rather than the Bizarre.

THE PEACOCK DAHLIA FARMS ARE THE LARGEST IN THE WORLD and have the largest and best equipped warehouse and storage cellar, a section of which is shown above. It contains 11,288 sq. ft. of floor space and 125,420 cubic feet of space. It is built of concrete, with an electric light plant attached, and a heating plant located 75 ft. away.

OUR MAIN FARMS are located at Williamstown Junction, on the Atlantic City branch of the Reading R. R., Ferry foot of Chestnut Street, Philadelphia, one mile south of the famous White Horse Pike from Philadelphia to Atlantic City, also 2½ miles by direct road from Berlin.

We cordially invite all to visit and see for themselves the **LARGEST DAHLIA FARMS IN THE WORLD—THE HOME OF THE WORLD'S BEST DAHLIA.**

ORDER EARLY It will greatly facilitate shipments if orders are sent in early. We aim to send out orders the same or the next day after receipt, but during the rush season this is impossible—hence the advisability of ordering early. If you so desire we will reserve and send at planting time or any date you name, otherwise orders go out at once weather permitting.

Guarantee. We guarantee every plant, bulb or root sent out by us to be just as represented, absolutely true to name, reach destination safely in perfect condition, and prove entirely satisfactory; we will cheerfully replace any that should prove otherwise. You run absolutely no risk in ordering from us.

Terms. Cash with order. Remittances may be made by Bank Draft, Post Office or Express Money Order, or Registered Letter at our expense and our risk.

Forwarding. Dahlia Roots and Plants are sent by mail postpaid at prices named herein. By express Dahlias are billed at "2nd class" rates and in most cases are one-third (1/3) or 33½ per cent. less than regular merchandise rates.

Errors. While we exercise every care, errors may occur occasionally. In such a case kindly notify us at once, and correction will be promptly and cheerfully made.

Name and Address. Be sure and write name and address plainly on each order or communication.

Reference. Berlin National Bank, Berlin, N. J.

Address all orders or communications to
PEACOCK DAHLIA FARMS - Berlin Post Office, N. J.



ZEUS 21-101. Decorative-Paeony. The illustration gives only the form of this largest and most wonderful of all Dahlias. This bloom was $10\frac{1}{8}$ inches in diameter and 5 inches deep. It has not only size and a cane stiff stem, but beautiful form as shown by the photograph. The color is a wonderfully rich glowing red, each petal distinctly tipped yellow. A giant without a trace of heaviness. So artistically built and richly colored that it attracts, it holds, it fascinates. The plant is medium dwarf, 3 to 4 ft. high, as we grew it in field; strong, sturdy, healthy and vigorous. A free and continuous bloomer. The demand was insistent and we reluctantly booked a few orders for plants for June 1st delivery at \$15.00 each. We will accept a few more orders which will be filled in rotation.

NEW INTRODUCTIONS FOR 1923

DREAM GIRL 19-13. Decorative. An exquisite new variety with an entirely new color combination that has attracted the greatest attention. Pale lemon yellow at base of petal, shading to rosy red at tips; reflex pale pink and white. The flowers are of good size, of beautiful, regular form and borne well above foliage on straight stiff stems. A fine dwarf branching grower, 3 to 4 feet. One of the loveliest of all dahlias and entirely distinct. An acquisition. Roots \$5.00 each.

IDA FRIES 19-08. Paeony. Very bright and attractive. Brilliant crimson, shaded plum, tipped lighter, making it very effective. The petals are beautifully irregular. Stems stiff holding the flowers well above the foliage. A fine grower and free bloomer. Roots \$1.00 each.

JANE HALL Decorative. A grand decorative of massive build on erect stems. The petals reflex to the stem, while there are many more to open at the center. Color, clear buff yellow, with a bronzy suffusion on the outer petals, which sets off the bright high full center. The plant is an early and continuous bloomer. When disbudded and from a little distance they resemble those huge yellow chrysanthemums. Roots \$1.00 each.



MOTHER 21-104. Hybrid Cactus. A glance at the illustration above, reproduced from a photograph, will tell the whole story of its name. It is so symbolic. Pure white with the slightest tint of color. It is large, so full, and carried proudly on an erect stem. The stem is well supplied with healthy green foliage, giving a still more striking resemblance to that old fashioned Mother. It is going to be universally grown—for exhibition, cut flowers and the garden. The plant is a strong sturdy grower and a free and continuous bloomer. Plants only ready in May, \$5.00 each. All orders filled in rotation.

KATHRYN DONGES Hybrid Cactus. The greatest of all yellows. The size is immense. 9 to 10 inches and deep with a full high center, always full in marked contrast to yellow King, which it resembles, only in form, being more than twice the size and such stems 2 to 5 feet long and as straight and erect as an indian spear. Wherever shown it has been acknowledged the greatest yellow cactus in existence. The plant is 5 to 6 feet high and branching a truly colossal dahlia, beautiful form and soft color, with the numerous long narrow petals, that there is no heaviness. Stock limited, while it lasts. Roots \$5.00 each.

KISSIMMEE 19-30. Ball. A marvelously colored variety, with such regular form, full high center petals, reflexing to the stem, that Prof. Norton considered it the best of its class. A wonderful blending of shades and tints, with such a luminous sheen. Color yellow, shading to flesh, tipped ochre, reflex pale amaranth pink; as the petals are semi-quilled, the color effect is most pleasing and effective. Roots \$2.00 each.

LILY LAWRENCE Hybrid Decorative. A lovely new type with irregular petals, twisted and whorled turbine like. The flowers are large and extremely full, with high pointed center. Color light yellow, outer petals suffused jasper red, reflex lighter. Plant strong, 3 to 4 feet, branching and an early and free bloomer on good stiff stems. An acquisition. Roots \$5.00 each.

MANATEE Decorative. Unique in form and massive in build, being extremely full, with full high center, and the petals are finely cleft. Also distinct in color; yellow overlaid flame scarlet, back petals darker, reflex lighter. The plant is a dwarf sturdy grower, producing the flowers freely on erect stiff stems. A popular Autumn shade as a cut flower and an ideal garden plant. Roots \$2.50 each.

and will replace, free of charge, any variety that does not give satisfaction.



CLAIRE KULP 19-71. Hybrid Cactus. A cross of Kalif and Mrs. C. H. Breck. An entirely distinct acquisition having the size of Kalif on a rigid, upright, but slender stem. Color rich cardinal red shaded garnet, yellow at base and at tip of petals, as shown in photograph above. Plant is strong, vigorous, 5 to 6 feet high and a free and continuous bloomer. The first flowers are solid red, midseason like above and late, for it blooms until frost, show more yellow at base and tip of petal. Plants \$1.00. Roots \$2.00 each.

MRS. CAROLINE BRUNER 19-07. Decorative Paony. A most popular variety of very large size, splendid form and produced freely on very long slender stems. Color brilliant crimson shaded maroon, with flame and yellow at center and base of petals. Very beautiful and striking. One of those varieties that is always in bloom and always beautiful. Roots \$1.00 each.

MRS. C. B. GITHENS Decorative. A distinctly light and airily formed flower that coupled with its chaste coloring appeals. Color, rose pink, tipped white; petals long, pointed, reflexed, and slightly whorled, giving it a most artistically distinct formation and effect. Plant is a sturdy grower of branching habit, with flowers held erect on cane stiff stems. An acquisition as a cut flower and for the garden. Roots \$5.00 each.

MRS. LEO NIESSEN Hybrid Cactus. One of the very best commercial cut flowers. It is one of our Florida creations, that we have held and grown exclusively for cut flowers up to the present time. Mrs. Niessen selected the variety to be honored with her name, late in the Season, when so many varieties were coming open centered. The plants were then broad and completely covered with long stiff stemmed, perfectly full flowers, of the most gorgeous Autumn shades. Color, yellow at base, suffused and heavily tipped a rich bronzy red. It is one of our very best cut flower sellers and a wonderful garden plant. As we have a fine stock we can offer them at \$1.00 each; 3 for \$2.50; 12 for \$9.00.

MRS. S. L. AUSTIN 19-37. A grand Hybrid Cactus, of largest size, long stiff stems and purest white color. A cross of 'Perle de Lyon and L. Kramer Peacock that will become the standard of its class. Plant, strong, vigorous and a profuse bloomer. Roots \$2.00 each.

Our guarantee has no limit. Satisfied customers made us the largest in the world.

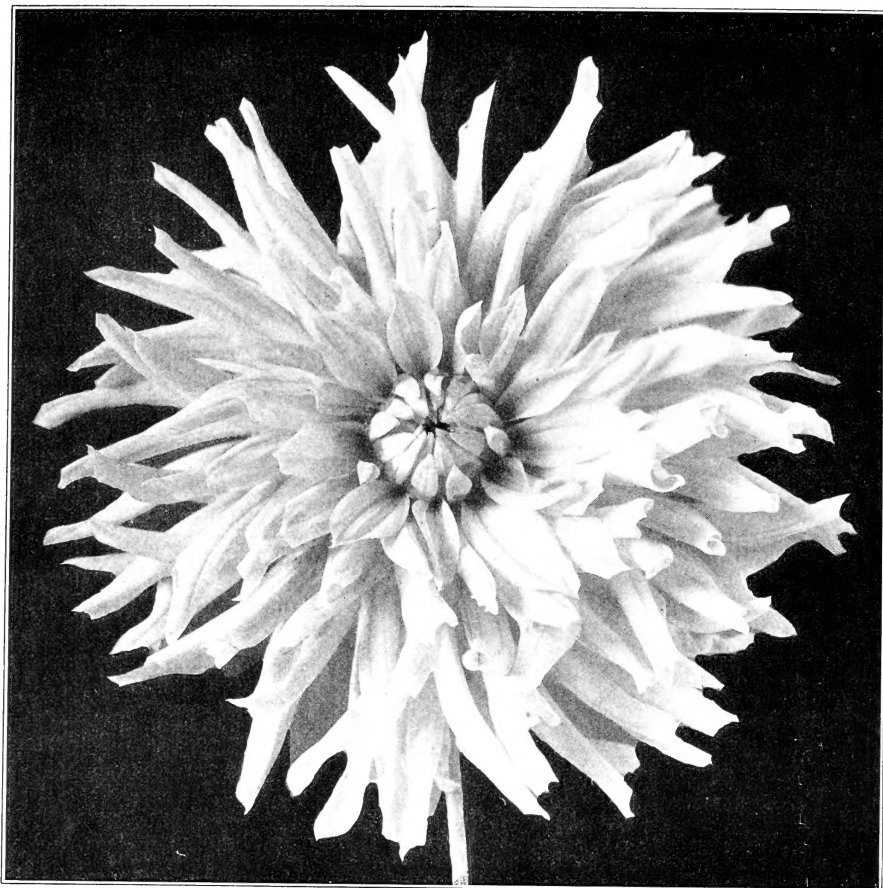


CRIMSON KING 21-21. Cactus. The illustration above gives a very good idea of this grand Cactus Dahlia, so far as formation is concerned, but it must be seen to appreciate the dark rich crimson color, full center and long rigid stem. The plant is a strong vigorous grower and a wonderful bloomer late in the season when most cactus come open centered. It is one of our Florida productions that does even better in the north than in the south. A cross of Yellow King and Norman and is far stronger than either parent. The flowers are of perfect shape with long narrow, incurved and twisted petals; plants 4 feet high. Roots \$2.00 each.

OLIVE NYCE Cactus. A splendid new cactus of large size and splendid form, with long pointed, slightly incurved petals. Color yellow at center, shading to golden salmon, with a pink suffusion. The plant is a strong vigorous grower with long stiff stem. Exhibition, cut flower and garden variety. Roots \$5.00 each.

PRISCILLA The most beautiful of all white Paeony Dahlias. The flowers are snow white, and most beautifully formed, the snow white contrasting so exquisitely with the rich yellow center. The large flowers are produced profusely and held erect on long slender but cane stiff stems. Especially fine for all floral work, bouquets and the garden. Roots \$1.00 each.

You can depend on every Dahlia ordered from us to give satisfaction.



Hybrid Cactus Dahlia, "BIANCA." (See description on next page)

SARAH HARLEY Decorative. A superb new variety that has made a place for itself in the cut flower market. Color, rose pink, tipped white. Flowers large and held erect on long, cane stiff stems. Roots \$2.00 each.

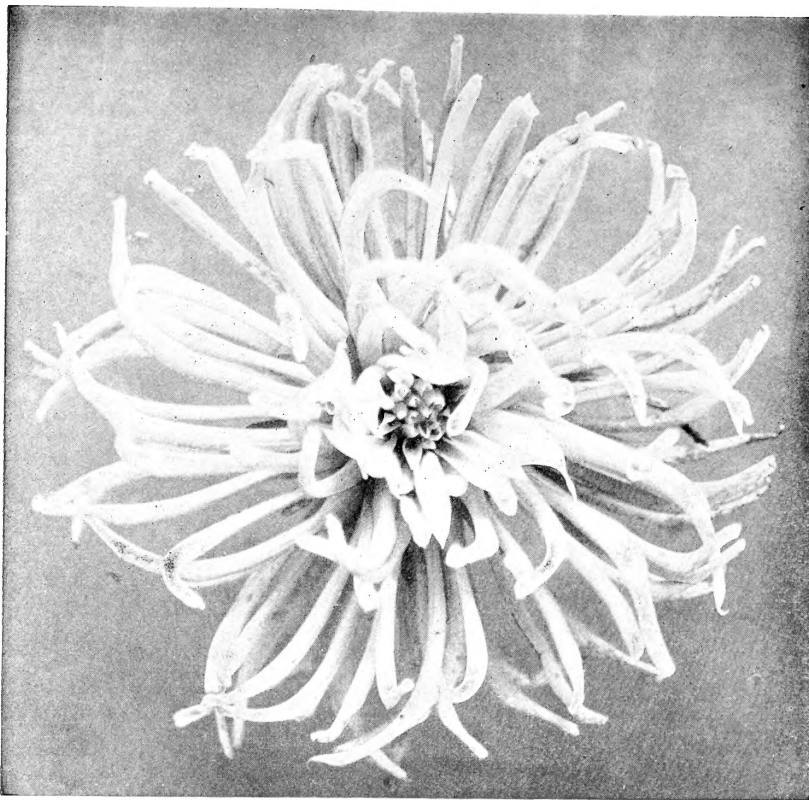
SENATOR BAIRD Decorative. Immense size and beautiful, regular form. Color rich glowing crimson. The plant is strong, vigorous and produces the giant flowers erect on straight stiff stems. An acquisition. Exhibition and garden. Roots \$5.00 each.

SOPHY MOREY Cactus. Beautiful and effective. Color white, lightly overlaid phlox purple; outer petals lighter. Flowers large, splendid form, with long, pointed incurved petals and held erect on stiff stems. Plant, strong, branching and an early and continuous bloomer. Roots \$2.00 each.

VERNA FOWLER Cactus. Light yellow, penciled and tipped pink and carmine. The plant is a very vigorous grower, 5 feet high and producing the flowers freely on long graceful stiff stems. Bright and effective. Roots \$1.00 each.

MARY DORR Cactus. Deep amaranth pink, with white tips and center. The flowers are large, with long narrow, pointed, incurved petals. Splendid bloomer on fine stems. Exhibition, cut flower and garden variety. This is a great improvement on Marg. Bouchon, which variety it will supersede. Roots \$2.00 each.

We not only deliver postpaid, but, guarantee safe arrival, in good condition.



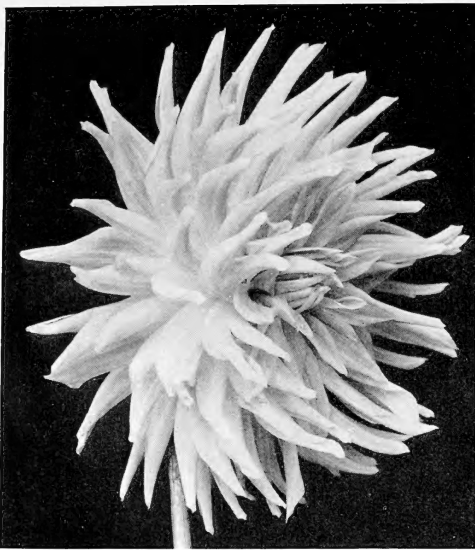
Cactus Dahlia, "CRYSTAL." (See description below)

New and Rare Cactus Dahlias

This collection embraces the World's Best Cactus Dahlias. Not only the largest size but all types and good growers and bloomers. Our stock is not only true to name but true to type.

- | | | | |
|---|----------------|---|----------------|
| ALICE B. RAND. Bright carmine pink tinted lighter, very full up to frost. Fine form..... | Each
\$0.50 | DUCHESS OF MARLBORO. A magnificent cactus, most pleasing and effective; rich golden orange, overlaid solferino. The flowers are of splendid form with long, narrow twisted incurved petals; large size and produced freely on long graceful stems..... | Each
\$0.50 |
| AVALANCHE. Very large of heavy formation, pure white, produced on long cane stiff stems..... | .75 | EDITH CARTER. A soft bright yellow, suffused and heavily tipped bright rosy carmine. Of fine form, good size and produced freely on long stiff stems. An unusually lovely variety. The plant is an early, free and continuous bloomer..... | .75 |
| BIANCA. A magnificent new hybrid cactus that is in a class by itself, of giant size and splendid form. (See illustration.) The color is white, suffused and overlaid an exquisite soft mauve pink. A strong vigorous grower of splendid habits and a very free bloomer. The gigantic flowers are facing and held erect on long stiff stems.... | 1.00 | EXCELSIOR. A splendid deep rich maroon of large size on long stiff stems. A good grower and free bloomer.... | .50 |
| BLENDA. Rich crimson, shaded maroon, pinkish white at base of petals. Flowers are large with long narrow incurved petals. A strikingly handsome flower that should be in every collection..... | .35 | FLORID. Bright scarlet, beautiful flowers with long narrow petals; borne on long stems..... | .35 |
| CARTER-BRECK. A cross of Edith Carter and Mrs. C. H. Breck. Color bright yellow at base, shading to richest carmine crimson. Beautiful form, profuse..... | 1.00 | FRANCIS WHITE. A splendid new white cactus of exquisite form with long narrow incurved and twisted petals. Large size, 5 to 7 inches across, borne on long graceful stems. Color pure white shading to sulphur at centre. An early and extremely profuse bloomer. One of the best for garden and exhibition..... | .35 |
| CRYSTAL. One of the very finest, clear soft pink cactus. Flowers are of large size with long narrow incurved petals and full centres. A strong vigorous grower and profuse bloomer. An excellent variety for exhibition and garden. | .50 | F. W. FELLOWS. Flowers of immense size. Composed of numerous long narrow incurved petals of a lively orange scarlet. This is one of the largest and finest Autumn shade varieties. Should be in every collection..... | .50 |
| Decision. A fine cactus, with long narrow incurved petals. Color deep yellow at center shading to golden bronze.... | .75 | GEN. SIR DOUGLAS HAIG. Light pink, of beautiful form, with long narrow incurved petals, large and fine | 1.00 |

and to grow, be true to name, and give entire satisfaction.



"RUBE GIRL." (See description opposite)

	NANTWICH. One of the very finest of the incurved petaled cactus. It is a strong vigorous grower of upright habit and the flowers are produced freely on good stiff stems. A beautiful golden orange shading deeper at the centre.....	Each \$0.50
	NORMAN. Immense size, with long narrow incurved petals. A splendid exhibition flower. Color, rich crimson.....	1.00
	PEGASSUS. Large with long, pointed, incurved petals. Color yellow, suffused coral red, tinting lighter toward tips. Fine exhibition variety.....	.50
	PIERROT. Immense size with very long incurved petals; deep amber, distinctly tipped white, sometimes solid amber. A magnificent exhibition and garden variety. It is a very strong vigorous grower, producing the giant flowers profusely on very long slender graceful stems....	.75
	QUAKER CITY. A fine new cactus of a most unique and attractive form. The flowers are large and each of the broad pointed petals is supplemented with 3 to 6 narrow pointed petals, giving it a most artistic effect. Color clear primrose yellow. A profuse bloomer.....	1.00
	RHEINISCHER FROHSINN. Rich crimson carmine, white at base of petals, distinct and striking, large size and fine form.....	1.00
	RUBE GIRL. A remarkable bronzy or "Autumn shade" variety that has forged to the front as a garden plant, and is especially valuable as a commercial cut flower. Color soft yellow, suffused, overlaid and tipped coral red, giving the flower a bronzy effect, that lights up wonderfully under artificial light. The plant is semi-dwarf (4 feet), of branching habit, and an early and extremely free bloomer, producing the always perfect flowers facing on long, slender stiff stems (see illustration opposite)....	1.00
	Ruth Gleadel. Lemon yellow, shading to buff, suffused and tipped pale lilac rose.....	.75
	SUNSET. One of the best of the bronzy Autumn shades. Yellow at base of petals, shading to bright Apricot; full and free, with stiff stems. A fine garden and cut flower..	.50
	Sweet Briar. Clear pink, without shade or blenish; fine form with long narrow incurved petals.....	.50
	WACHT AM RHINE. Soft hydrangea pink, tinting to white at centre. A most striking flower with deeply cleft petals. A strong vigorous grower and profuse bloomer, on long slender stiff stems.....	.35
	Special Offer.—One root each of the above new and rare Cactus Dahlias. 38 varieties in all, by Parcel Post prepaid, for \$21.00.	
	GOLDEN WEST CACTUS. See description on colored insert pages.....	Each \$0.50
	IRENE SATIS. An exhibition variety of immense size, with long pointed petals. Color lemon yellow shaded golden bronze; stiff stems.....	.75
	Jenny Wren. A fine shade of yellow, suffused and overlaid pink. An excellent exhibition variety.....	.50
	Jupiter. Immense size, with long, narrow, incurved petals. Color rich bronze, penciled crimson.....	.50
	LUMESCH. A cross of Mme. A. Lumiere and Mme. Eschenauer. A most beautiful and distinct variety of hybrid cactus form. The color is white suffused pink, heavily shaded carmine. A popular color combination, that is pleasing and effective. An early and free bloomer	1.00
	Marguerite Bouchon. A magnificent large full flower. Centre pure white, outer petals a brilliant yet soft violet rose tipped white. A strong grower producing the flowers freely on long rigid yet graceful stems.....	.75
	Melody. Very large, with long narrow incurved petals. Yellow tipped white.....	.50
	Milton Howard. A most pleasing and distinct new Cactus Dahlia that appeals to all. Color clear pink, tipped white. A fine exhibition variety.....	.50
	MME. ESCHENAUER. An ideal Dahlia of exceptional merit. Most pleasing and effective color, being yellow at base of petals, passing to creamy white, suffused and tipped pale lilac. Delicate and chaste.....	.50
	Mme. Henri Cayeux. Clear pink, tinting to white at the tips. Long slender petals. A strong grower and extremely profuse bloomer. We consider this an improvement on Marguerite Bouchon in that it is a stronger grower, more profuse bloomer and produces the flowers on long straight stems.....	.50
	MODEL. A beautiful cactus of exquisite form and coloring, being a clear yellow, passing to rose; very distinct and effective. A strong grower and an early, free and continuous bloomer.....	.50
	MRS. C. G. WYATT. The best all around white cactus, a strong vigorous grower, producing the beautiful snow white flowers profusely on long stiff stems. Beautiful form with long narrow incurved petals.....	.50
	Mrs. T. A. Munro. Immense exhibition flower, with long narrow incurved petals. Color deep golden yellow, shading to richest golden bronze.....	1.00
	COLossal Cactus Dahlias	
	These grand varieties are of giant size, having long broad petals, approaching the hybrid cactus in form.	
	ATTRACTION. Large, elegant flower of a clear lilac rose, borne on long stiff stems and a Dahlia of exceptional merit. A true paony-cactus type.....	Each \$0.75
	COLOSSAL PEACE. A massive cactus of the Kalif form and size, often measuring eight inches across. Later in the season when flower shows a centre it is a wonderful paony Dahlia. Color creamy white at centre, shading violet rose with lighter tips. The plant is a very strong vigorous grower, of branching habit, an early and profuse bloomer on long stems.....	2.00
	ETENDARD de LYON. Very large size, with heavy petals and great substance. Color rich plum. The giant flowers are produced freely on rigid erect stems. Exhibition and garden.....	.75
	GEO. WALTERS. Flowers of immense size. Color a rich coppery old gold, tinting to buff at the center. A great acquisition.....	1.00
	KALIF. A very large pure scarlet red. A strong plant, producing the giant flowers freely on long stiff stems. This is undoubtedly the most popular red Cactus Dahlia today and one that gives universal satisfaction.....	.75
	MRS. WARNAAR. One of the best of the Holland productions. Of mammoth size, fine form and substance. Color, creamy white with apple blossom suffusion. An acquisition.....	1.00



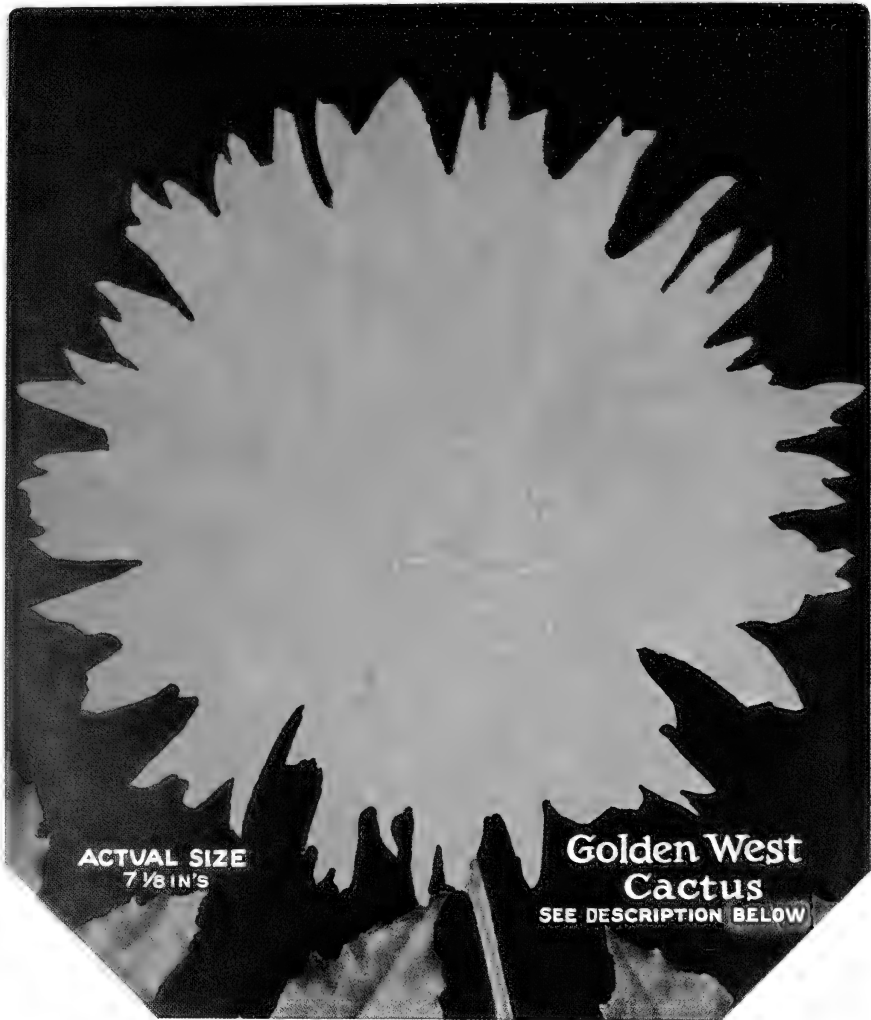
MARY STEFFENSON The natural color reproduction from a photograph gives only an idea of the delicate loveliness of this wonderful variety—the most delicately beautiful dahlia in existence. The color, at base, citron yellow, outer half creamy white; both yellow and white mottled and overspread with rosolane pink. Many petals showing faint yellow along midvein. All dusted over with tiny glistening crystal like particles as of gold dust. Form full and graceful. Size large 7 inches and more across, with great depth. Petals recurved, acuminate, none cleft; edges generally rolled in; slightly whorled or twisted tips. Blooms, erect to facing on cane stiff stems, well above foliage.

The plant is a strong vigorous grower of branching habit, producing the large, perfectly full flowers freely, on long, cane stiff stems until frost. Height 5 to 6 feet.

Mary Steffenson is entirely distinct from any other Dahlia and we only wish every reader could have seen our plants last October and the wonderful buckets of cut blooms in our cut flower cellar. They take on extra color and size as the season advances in marked contrast to most Dahlias. How they enjoy the cool October weather.

They should be planted late as the lovely tints do not develop perfectly in hot dry weather. They should have thorough cultivation and be disbudded. The buds are very long, slim and pointed. Roots, \$2.00 each.

SPECIAL OFFER. We will send one strong root each of Mary Steffenson, Queen Elizabeth and Golden West Cactus for \$2.50.



ACTUAL SIZE
7 1/8 IN'S

Golden West
Cactus
SEE DESCRIPTION BELOW

GOLDEN WEST CACTUS

See color illustration above, reproduced from a photograph. This is a California variety that is **in a class by itself**, in its color—that **rich golden, bronzy yellow, with the scarlet shading at the base** of the petals and the center. It is a wonderful grower, strong and sturdy, with heavy, clean healthy leaves, and branching habit, producing the large flowers freely on long, stiff stems. The flower is large, 6 to 8 inches across, the outer petals reflexing somewhat, and a full high center, making it very deep. If properly grown and disbudded, it is a winner for exhibition, a wonder as a garden plant, and the best of its class and color for commercial cut flowers. The past season fully demonstrated the superiority of this variety, as we could at no time supply the demand for cut blooms. Should be in every collection. Roots 50 cents; \$5.00 per doz.

Announcement

To the thousands of visitors at our farms who were so anxious to purchase the giant new dahlia, 21,106, we wish to announce that it has been named "**Rodman Wanamaker**" and advance orders can now be booked for delivery, Spring, 1924, at \$15.00 each. All orders will be filled strictly in rotation.

Visit our show rooms and trial grounds next September and October. Open daily and Sunday, Sept. 1st, until frost.

NIBELUNGENHORT. Immense flowers, 7 to 8 inches across, rich golden apricot, suffused old rose. The plant is also a giant, being very strong and vigorous, producing the massive flowers early and freely on very long stiff stems. It is entirely distinct, does well everywhere and should be in every garden collection. It is a fine exhibition variety. \$0.75

WASHINGTON CITY. Snow white, of beautiful form and borne on long stems. The flowers are of enormous size 2.00

WODAN. Old gold at centre, shading to a salmon rose. This variety is in a class by itself, in-so-far as it is an extremely vigorous, almost rampant, grower, producing the big flowers profusely on very long stems. One of the best.50

YELLOW KING. One of the largest of all cactus Dahlias, being of gigantic size and of the finest new cactus. Color light yellow, tinting to cream at the tips, giving it a most pleasing effect. The immense flowers are borne on long stiff but slender stems. The plant is a strong and sturdy grower and a free and continuous bloomer under all conditions, making it one of the most reliable for all purposes. Should be in every collection.50

Special Offer.—One root each of above 10 Colossal Cactus Dahlias, carefully labeled, by Parcel Post, prepaid, for \$8.50.



Cactus Dahlia, "LAWINE." (See description below)

Select Standard Cactus Dahlias

The following embraces the very best standard Cactus varieties. We have grouped them as the best for general cultivation, from our observations in the fields. We offer them with the utmost confidence that they will give the greatest satisfaction to Dahlia lovers who want the very best in quantity. These varieties can be depended upon to give an abundance of bloom for all general purposes. For exhibitions we would refer to the **New and Rare and Colossal**, cactus varieties. Each

- Burbank.** Vivid cardinal red, long stems \$0.25
- CANDEUR.** Large white, a strong vigorous grower, and an early and profuse bloomer. Long stiff stems50
- Celia.** Rich pink, a fine free bloomer25
- Citizen.** Fine rich dark red20
- CLAUDIUS.** Very large, soft cardinal red; long narrow petals; very fine25
- COCKATOO.** Clear yellow, tinted fawn, tipped white. Very large, of fine form and a profuse bloomer35
- COMRADE.** A very pleasing variety of dwarf branching habit, producing the clear salmon pink flowers freely on stiff stems well above the foliage.15
- COUNTESS OF LONSDALE.** Yellow, suffused salmon red, overlaid lavender35
- CREPUSCLE.** Yellow, shaded deep orange. The flowers are very large, of good form and a very profuse bloomer for so large a flower. The plant is a strong vigorous grower of medium height and a very reliable and continuous bloomer.35
- DAISY STAPLES.** Mauve pink; medium size, fine form. Profuse bloomer with good stems20
- EFFECTIVE.** Primrose, shade amber; small size on long slender, stiff stems. Very profuse bloomer25
- ELECTRIC.** This is one of the most charming varieties. The color is rich clear canary yellow, each petal heavily tipped white; delicate and chaste. The flowers are large and finely formed with incurved petals50
- Elsa.** White, suffused yellow, overlaid pink and edged carmine rose. Very effective and pleasing25
- Faunus.** Yellow, shading to rosy scarlet, long pointed petals. A beautiful flower25
- Flame.** Bright flame color, long narrow petals20
- Floradora.** Pure garnet, fine form, profuse20
- Gabriel.** Salmon scarlet tipped white20
- Gaillard.** Vivid vermilion, fine form; stiff stems20
- General Buller.** Very bold and striking. Rich velvety maroon, shading to crimson, tipped white; a profuse bloomer on stiff stems, well above the foliage.20
- GENERAL PERSHING.** A very large creamy white hybrid cactus, with curved and twisted petals. A strong vigorous grower and profuse bloomer. Color white with cream shadings at centre.35

- GOLDEN EAGLE.** Very large, bright yellow suffused rose fawn. The petals are long, narrow and pointed. Produced on extremely long graceful stems. A profuse bloomer \$0.50
- GRAPHIC.** Richest crimson, shaded maroon, tipped white. Long pointed incurved petals. A beautiful flower, with long stems50
- HARLEQUIN.** Bright carmine, edged and tipped white25
- H. H. Thomas.** One of the finest forms of the incurved cactus type. Flowers are very large with numerous long narrow incurved petals. A beautiful deep rich crimson. A strong vigorous grower. One of the best exhibition varieties.50
- H. Shoesmith.** Vermilion; long narrow petals; fine25
- H. W. Sillem.** Large bright crimson.20
- Iolanthe.** Very large, long quilled incurved petals. Deep coral red, tipped gold. A strong vigorous grower with long slender graceful stem25
- J. B. Briant.** Very large, soft yellow, a fine exhibition variety; petals long, narrow and incurved35
- J. H. JACKSON.** Still one of the best and most reliable of the so called black Dahlias; rich velvety maroon, shaded black. A fine large flower and a free bloomer35
- KRIEMHILDE.** Deep cerise pink, tinting to creamy pink at centre. A distinct and valuable variety as the flowers keep a long time after cutting25
- LAWINE.** A magnificent flower on long stems. A large white, lightly suffused pink. A strong vigorous grower, early and profuse bloomer. One of the best for commercial cut flowers and for the garden. (See cut above)25
- LIBELLE.** Another grand variety of medium size, a profuse bloomer. Color a beautiful aster purple; very effective.25
- Lyric.** Rich yellow, shaded bronzy red; very fine25
- Magnificent.** Large, yellow shaded bronze35
- MARJORIE CASTLETON.** The best standard pink Cactus Dahlia. It is much softer than most of the pinks, and is an early, continuous bloomer. The color is soft rosy pink, tinting lighter toward the centre. It is a very rapid grower, with good stems and keeps well after cutting. (See illustration, page 10)25
- MARY PURRIER.** A splendid bright red, of large size and long narrow incurved petals; stiff stems35
- Milicent.** Orange carmine, very fine.25
- Miss London.** A very large and beautifully blended exhibition cactus. Color deep rose tinged yellow.35

These are made up of choicest varieties that we grow in quantity.



"MARJORIE CASTLETON." (See description on page 9)

MISS STREDWICK. Very large, with long narrow petals, fine form. Rose tinting lighter at center	Each \$0.35
Mrs. Chas. Scott. A fine bronzy yellow; large, finely formed, and a profuse bloomer. Always full at centre	.25
Mrs. F. C. Stoop. A splendid pure yellow; a free bloomer, on stiff stems	.25
Mrs. H. J. Jones. Scarlet tipped white	.35
MRS. REGINALD BAILEY. Large size, splendid form with long narrow incurved petals, always full centre. Color brilliant carmine crimson	.50
MRS. SEAL. A very striking cactus that is greatly admired by many. The flowers are large, deep maroon, tipped light rose and white. The colors are so harmoniously blended and it is such a profuse bloomer that it will be a valuable acquisition to those that like variegated or multi-colored flowers	.35
Mrs. Stephens. Soft primrose, very large	.35
Mrs. Henry Wirth. Deep red, very free bloomer	.35
Morning Glow. Soft golden yellow, tipped bronzy amber. Large, fine form and profuse	.25
Pink Pearl. Bright rose pink, tipped white; fine form, an early and profuse bloomer	.25
Prima Donna. A finely formed pure white	.25
QUEEN OF HEARTS. A beautiful pure white with yellow at base of petals, making it a most lovely and effective flower	.25
Red Admiral. Vivid scarlet, long narrow incurved petals	.35
REINE CAYEUX. Rich glowing cardinal red. An early and extremely profuse bloomer, with good stems. A grand garden and cut flower variety	.35
Rev. T. W. Jamison. Very large, with long incurved petals; a strong vigorous grower with long stems, color soft salmon pink, suffused lilac	.35
Ruth Forbes. Large, deep pink, long stems	.20
SEQUOIA. Large golden bronze, fine form, long stiff stems. A strong grower and profuse bloomer. One of the best	.25
Stormer. Deep rich cardinal red, fine form	.25
SUCCESS. One of the best for garden or exhibition. Clear yellow with long pointed petals; an early, free and continuous bloomer on long stems	.25

T. G. BAKER. Very large, finely formed flowers on long stiff stems. One of the best yellow	Each \$0.35
The Quaker. A fine exhibition cactus, white suffused flesh pink, beautiful and chaste	.35
Thos. Oberlin. Very large fine flower, with long incurved petals. Color intense scarlet	.35
Vanguard. Soft pink, long narrow incurved petals	.50
Vater Rhein. Yellow shaded golden bronze	.35

Special Offer.—One each of the 62 Selected Standard Cactus Dahlias, strong roots, by Parcel Post, prepaid, for \$16.00.

Collarette Dahlias

A most uniquely distinct class or type, that has become quite popular. Every collection should include one or more of them. The flowers are single with a smaller row of small or collar petals. These collar petals are generally distinct in color from the outer row.

We know these will please you and add to the attractiveness of your collection.

Albert Maumene. Velvety crimson purple, Each margined white, collarette white	\$0.25
ARDEN. Very rich and effective deep golden yellow, blotched vivid orange crimson, collar pure yellow	.35
Atglen. Rich maroon, tipped purple	.25
Banker. Rich scarlet, collar petals scarlet, tipped yellow	.25
DIAMENT. Very large, velvety violet, collar light rose, very distinct and effective	.35
DORIAN. Rich crimson, shaded maroon; collar white suffused crimson	.35
ELGRAVE. Duplex collarette, most novel and effective, with two or more rows of petals; rich maroon, collar petals maroon, heavily tipped white	.25
FAYETTE. Another duplex collarette, bright scarlet with light yellow collar petals at base of each petal. The plant is a strong vigorous grower and free bloomer. Fine for garden or cutting, very striking and effective	.25
Henri Farman. Yellow blotched red; cream collar, very pretty	.25
MARLEY. Clear light canary yellow; a fine variety for cutting; very effective	.25
MAURICE REVOIRE. Rich crimson maroon, white collar. Plant is a strong vigorous grower and profuse bloomer. Very effective	.25
Mme. F. G. Bruant. Very large, rich velvety maroon, with white collar; rich and striking	.25
Mons. L. Ferard. Rich rosy crimson, edged and marked white. Large collar petals same color	.25
PRINCE CARNIVAL. Very large and fine. Soft rosy red with light collar	.25

Special Offer.—One root of each of the 14 Select Collarette Dahlias described above for \$3.00.

New and Superb Decorative Dahlias

This is a remarkable collection of the World's Best Decoratives.

ALASKA. One of the very finest white decorative dahlias. Each Flowers of large size, finest form and borne erect on rigid stems. Exhibition or cut flower	\$0.75
Amoralis. Very large, soft yellow, on long stiff stems	1.00
AYESHA. Immense size, clear light yellow, of beautiful regular form. The plant is a very strong vigorous grower and free bloomer. Fine for garden, exhibition and commercial purposes	.35



New Decorative Dahlia, "OCTOBER." (See description, page 14)

- | | | | |
|---|----------------|---|----------------|
| Berch von Heemsteede. Pure yellow, suffused a golden bronze; petals beautifully twisted and whorled, large and fine..... | Each
\$0.50 | Challenge. A very striking new decorative. Flowers large, yellow at the base, shading to bronzy red, tipped rich velvety oriental red. A fine grower and a good bloomer..... | Each
\$0.75 |
| BREAK O'DAY. A new giant flowered Dahlia that should be in every collection. Its immense size is relieved by a beautiful irregular formation and its soft color. A delicate clear sulphur yellow, tinting to sulphur white at the tips. The petals are of great substance, illuminated by a satiny sheen, giving the flowers a waxy appearance. A strong vigorous grower and free bloomer with long erect stems. An acquisition..... | .50 | CHARLES LAWRENCE. One of our new Florida productions, No. D. 2. This is the immense rich crimson decorative that attracted so much attention the past two years, at our farms, and at our exhibitions, at Wanamaker's, in Philadelphia. Color, full crimson, richly shaded. Size, 7 to 8 inches across and 3 to 4 inches deep; of great substance and a good keeper. It is of splendid form, with full high center, and as it develops, the outer petals reflex to the stem.
A wonderfully strong, vigorous grower, of branching habit, with dark glossy green foliage, showing its rugged constitution. The giant flowers are produced, freely and continuously, on long erect stems, with the flowers facing boldly. Height, 5 feet. Stock limited..... | 5.00 |
| BRECKLOIT. A new creation that will soon find its way into every dahlia garden. Color a rich velvety crimson, shading to maroon. Flowers large 6 to 8 inches and held facing on stiff erect stems well above the foliage. The plant is a strong vigorous grower, of branching habit and an extremely early and profuse bloomer. Height 4 feet..... | .50 | CHIEFTAIN. Clear light red, heavily streaked and splashed canary yellow; some flowers all red; very large and attractive..... | .75 |
| Breeze Lawn. Dazzling vermilion, of immense size, perfect form, and full center. Early and profuse bloomer.. | 1.00 | COPPER. Broad, fluffy, twisted petals of a beautiful copper shade, tinting with bronze and apricot. Large size flower on stiff stem..... | .75 |
| Bronze Ayesha. A rich bronzy brown sport of Ayesha. Very large and fine form, exhibition or garden..... | .75 | | |



New Decorative Dahlia, "SHEBA." (See description, page 15)

Darlene. An extremely early and profuse bloomer. Habit dwarf and branching. Color clear pure pink; splendid form.....	Each \$0.35	HELEN DURNBAUGH. A wonderful new mauve pink, of largest size and great substance. The plant is a strong vigorous grower and free bloomer on long stiff stems. One of the very best.....	Each \$1.50
Esther Gale. A new snow white of splendid form and an extremely profuse bloomer, fine for garden.....	.50	Herr Hohenzollern. It is a new variety that will be grown universally as soon as the large, dark velvety red flowers are seen.....	1.00
Fackel. A lovely color combination; rich golden scarlet, tipped golden yellow. An early and profuse bloomer; one of the loveliest of the Autumn shades. Small but fine.	1.00	HOCHSAI. Very large and borne facing on stiff stems. Color soft scarlet tinting lighter at tips.....	.75
FANTASIE. A new acquisition that promises to become a universal favorite. The flowers are very large, exquisite form and coloring. The color is entirely new and distinct, being salmon shaded blue. It is a very profuse bloomer.....	2.00	HORTULANUS FIET. One of the loveliest Dahlias that ever came from Holland. The color is a creamy-salmon, shading to soft yellow. The flowers are large, and the formation and stems are both excellent. Free flowering.....	1.00
FLAMINGO. This is the genuine Flamingo and red as it should be. Besides being a brilliant red, it is of immense size with long twisted and curled petals, giving it a most uniquely irregular form.....	.75	HORTULANUS WITTE. Very large, pure white; with good stems, one of the best.....	.35
GLORY of ARGONNE. The most beautiful pink and white show dahlia grown. Color, delicate violet rose shading to white at center, perfect, even form on erect stem. One of our best, and fine for cut flower and exhibition.....	1.50	IMMOKALEE. Entirely distinct. Color nopal red in heavy mottling and suffusions over underlying aniline yellow. Perfect decorative form, with edges of petals inrolled, trowel like; rounded tips, some shallow, not notched; under petals opening in trumpet form. Bloom held facing on splendid stems, well above the foliage. A strong, healthy vigorous grower of medium height, branching and a free bloomer.....	.50
HARVEST MOON. A wonderful clear pure yellow of good size and fine form.....	1.50		

Visit The Peacock Dahlia Farms next September and October. Largest in the World.



Decorative Dahlia, "JOHN WANAMAHER"

INSULINDE. The finest and most artistic Dahlia of distinct form with petals twisted and curled. Stems are two to three feet long, and flowers 9 to 10 inches across. Color, a rich saffron yellow shaded russet orange. One of, if not the grandest of Holland's introductions	Each	KING ALBERT. In this we have a magnificently royal flower. Large, finely formed, rich royal purple. It is a strong vigorous grower and free bloomer	Each
JANE SELBY. One of the largest of all Dahlias. A delicate mauve pink of great substance and beautiful formation. The plant is a strong grower, producing the giant flowers on long stiff stems well above the foliage. A great acquisition and a flower that should be in every collection.	\$2.50	Le Armour. Fine form, on good stems, color deep pink50
John Wanamaker (see illustration above). One of the loveliest formed, no two petals or flowers just alike. Color soft orchid pink. An extremely early and profuse bloomer. Should be disbudded to give large long stem flowers.	1.00	L. KRAMER PEACOCK. The ideal white decorative for garden or cutting. The flowers are large, of perfect form, pure white and of great substance, keeping a long time after being cut. The plant is a strong vigorous grower of dwarf branching habit, a quick free grower and profuse bloomer. (See illustration, page 14)50
Jonkheer Boreel. Soft yellow, shading to golden amber. Large, splendid form on long stiff stems. Exhibition and cut flowers.75	MARY SWAIN. Very distinct and striking. Color varies from white flushed pink at center to rich maroon at tips. The plant is dwarf and an extremely profuse bloomer	1.00
KATHERINE DE LA MARE. Color is clear yellow at base of petals, passing to primrose, overlaid and suffused pink, shading to rose at tips of the outer petals. The flowers are of beautiful form and quite large, about 6 to 8 inches, and are produced on long erect stems, facing. A strong vigorous, branching, upright grower.	1.00	MEDUSA. One of the largest Dahlias grown and an entirely new type. The long pointed bud is held erect on the cane stiff stem, and as the flower expands the long narrow petals unfold with an individual twist. Color a luminous rose red, tinting lighter at tips of outer petals. As the flower develops the long twisted outer petals reflex downward, in a most novel and pleasing manner. Size 8 to 10 inches with petals extended	5.00
Kiffin Rockwell. Rich golden orange, sometimes tipped white. A large finely formed flower, a free bloomer on long stems.75	MINA BURGLE. One of the best, rich cardinal red of fine form and produced freely on long stiff stems. Plant is a strong vigorous upright grower and profuse bloomer. (See illustration, page 15)50
		Monterey. Flowers, of large size and a luminous pink color, with good stems.	1.00



Decorative Dahlia, "L. KRAMER PEACOCK." (See description, page 13)

- | | | | |
|--|----------------|--|----------------|
| MRS. BERTHA MORRIS. A magnificent flower of large size and richest crimson color | Each
\$0.50 | OCTOBER. Autumn yellow suffused and tipped red. A splendid "Autumn shade" variety, that remains perfectly full to the center until killed by frost in November, the large flowers are produced freely and held facing on the long stiff stems. (See illustration, page 11) | Each
\$1.00 |
| MRS. C. H. BRECK. One of the most effective varieties for all purposes. Color soft yellow, suffused and tipped carmine, bright and effective. The plant is a strong, vigorous grower of dwarf branching habit and an early, profuse and continuous bloomer. The flowers are large and borne on stiff erect stems. It is a hybrid decorative. | .50 | PATRICK O'MARA. This sensational new decorative variety was awarded a Gold Medal by the American Dahlia Society, as the best Autumn shade variety in existence. The color is an unusually soft and pleasing shade of orange-buff, slightly tinged with Neyron rose. It is very large, 7 to 9 inches in diameter, and borne on long strong erect stems. It is a strong vigorous grower and free bloomer. The giant flowers are well formed, while the outer petals are most pleasingly irregular | 1.00 |
| MRS. F. F. SHOCK. Large, regular, perfect form; inner petals cupped, outer flat and reflexed in most approved manner. Color picric yellow at base of petals, blending to almost pomegranate purple at the tips. The plant is strong, vigorous and an early, free and continuous bloomer on long stiff stems. | 1.00 | PORTHOS. The nearest to "blue" dahlia yet produced. A beautifully formed lavender blue decorative, of medium to large size produced on long stiff wiry stems. Flowers susceptible to the sun. Should be planted to get partial shade during middle of day, or planted to bloom late, after the hot weather is over | 1.50 |
| MRS. J. C. MORAN. Large flowers of even form on erect stems. Color soft lilac shading white. Bush rather dwarf, but a profuse bloomer | .50 | PRINCE OF ORANGE. A giant flower, 7 to 9 inches across, rich orange, shaded scarlet. The flowers are produced on magnificent cane stiff stems, 3 feet long and borne erect. A wonderful exhibition flower. | 1.00 |
| MRS. J. HARRISON DICK. One of the most valuable new varieties of recent production. Color citron yellow at center, outer petals suffused and overlaid salmon pink, a lovely and effective combination, especially under artificial light. The plant is a wonderful grower of medium height and branching habit producing the perfect flowers in greatest profusion on long stiff stems. The flowers are medium to large, 5 to 7 inches in diameter and are held facing on the cane stiff stems. Valuable for exhibition, cutting and the garden | 1.00 | | |

Come and see the largest and most complete Dahlia trial grounds.



Decorative Dahlia, "MINNIE BURGLE." (See description, page 13)

- | | | | |
|--|--------|---|-------------|
| QUEEN MARY. A grand decorative that has proven its worth as the best deep pink for all purposes. The size is large to very large, full high centre, even up to November, when killed by frost. Color clear silvery cerise pink. The plant is a strong, healthy, vigorous, upright branching grower, producing the giant flowers freely on long stiff stems. (See illustration, page 17) . . . | Each | SHEBA. A remarkably charming and effective variety that is sure to become a universal favorite. Color petal tips white; broad band of white along midvein toward base, both edges cardinal—darkest on opening petals at center. Form: Fluffy, loose, artistic, stylish. Size: 5 to 6 inches, with beautiful, full, pointed center. Petals recurved, twisted and whorled; some half spiral edges, some inrolled trowel like; other edges rolled back. Tips acuminate, none cleft. Some petals project forward giving depth. Petal line effect wavy and sinuous. Blooms facing on perfect stem well above foliage. | Each |
| ROBERT SHEPPARD. This is our D. 1, that has been admired so much for its many all-around good qualities. Color is ruby red, shaded and suffused maroon—a color entirely distinct. Flowers are large, 7 inches and more across, produced freely on long graceful stems. It is an early and continuous bloomer. Height, 5 feet. | \$0.35 | Van Rensselaer. Vivid red, of fine form and produced freely on long stiff stems. | \$1.00 |
| RUTH ROLAND. Sulphur yellow, tipped and suffused mauve rose. Large well formed and a strong vigorous grower. | 1.00 | Viensbach. Rich crimson, shaded maroon. Very fine form; long stems. | .75 |
| SEBASTOPOL. A Burbank creation that has never been equaled in its class and color. Rich golden scarlet, always full to the center. | .50 | Special Offer. —We will send one root each of the 57 New and Superb Decorative Dahlias listed above for \$50.00. | |
| STUNNER. Very large, soft yellow, of finest form and boine erect on strong stiff stems. A free bloomer. One of the best. | 1.00 | Select Decorative Dahlias | |
| SULPHUREA. Clear light sulphur yellow, of largest size and splendid form on good stems. | 1.00 | Selected from the best standard varieties. All are good bloomers and will give the greatest satisfaction. | |
| Terra Cotta. Yellow and terra cotta suffused rose. This is the variety so extensively sold for Insulide. | .75 | A. C. Ide. Very large, deep crimson maroon, long stiff stems. | Each \$0.25 |
| | | ADMIRAL TOGO. Bright wine red margined velvety maroon. | .25 |

We devote acres to this purpose for the pleasure and benefit of all Dahlia lovers.



"MRS. C. H. BRECK." (See description, page 14)

	Harmony. Color very similar to Wodan; mauve rose with golden suffusion, good form and habit of growth.....	Each \$0.25
	HENRY MAIER. A bronzy Mina Burgle. Large yellow suffused amber. Strong vigorous and an extremely free bloomer.....	.25
	Henry Patrick. Large snow white flowers, beautiful form and great substance.....	.25
	Immense. Very large, white suffused and tipped bright rosy crimson.....	.50
	JACK ROSE. The best crimson for garden or cutting; that brilliant crimson red that made the "Jack" Rose popular and suggested the name.	.15
	Jan Olieslager. Very large, pure yellow.....	.75
	J. Liddon Pennock. A purple sport of Le Grand Manitou.....	.50
	Jumbo. Deep red, shaded maroon, very free....	.25
	KITTY DE LA MARE. It is a very strong, vigorous grower, very branching habit, producing flowers of medium size and lovely primrose tinged pink color on long stiff stems in the greatest profusion.....	.50
	LE GRAND MANITOU. Immense size; lilac penciled crimson, extra fine; dwarf.....	.50
	Liberty Bell. Soft crimson carmine, with white tips and yellow at base of petals.....	.75
	LYNDHURST. Brightest vermillion; the best bright red for cutting. An early, free and continuous bloomer on long straight stems.....	.25
	MARCELLA. A splendid medium sized flower of clear bright luminous pink, tinting lighter at tips of petals and yellow at base. Plant dwarf, branching and producing the flowers in profusion on straight stiff stems. Fine for cutting and an ideal garden plant.....	.50
	Marchioness of Bute. White suffused pink, heavily tipped deep cerise. Profuse bloomer.....	.25
	MELODY. One of the finest, being of splendid regular form with full high centre and reflexed outer petals. Color clear canary yellow, tinting to creamy white at the tips; an effect so delicate and pleasing as to suggest the name.....	.20
	MINNIE McCULLOUGH. One of the most indispensable decorative varieties that is largely, but should be universally grown. It is entirely distinct, in a class by itself, on account of the combination of Autumn shades—the gold and red of Autumn leaves. The illustration shows the form and average size, but the flowers must be seen to be fully appreciated. Especially effective under artificial light. Selected stock.....	.25
	MME. MARZE. Immense pure white, the giant flowers are produced freely on long stiff stems.....	.50
	Mont Blanc. Pure white on stiff stems. A flower of great substance and fine form.....	.50
	Mrs. J. Gardner Cassatt. Bright cerise pink, large flowers on long stiff stems.....	.25
	Mme. Aymond. Large flower, white suffused primrose and pink, shaded cerise; stiff stems.....	.35
	Mrs. Winters. Pure white with long stems.....	.25
	NANCY ALDEN. Light pink, suffused deep pink. The pink shades are clear and the flowers are held erect on long stems. A remarkably free bloomer and one of the very earliest to bloom. Height, 4 feet.....	.35
	Nina. White, with a lilac blush, of large size and on very long stiff stems. Petals cleft and of regular formation..	.35
	OLD GOLD. A wonderful old gold color, flowers of medium size, regular formation and produced freely on long straight stems; fine for cutting; a good grower....	.50
	Orange Pearl. Rich orange tipped white.....	.25
	Orange King. A wonderfully free blooming dwarf plant that is a mass of rich orange scarlet blooms. A fine bedder.....	.25
	Oregon Beauty. Very bright vermillion cardinal, rich and glistening, flowers are large on long graceful stems....	.35
	Papa Charmet. An old favorite that is still good. Color a rich crimson, shaded maroon. Flowers are large and held erect, well above foliage on stiff stems.....	.50
	PERLE DE LYON. Splendid pure white. Similar to Perle de 'Or, but better.....	.35
	Albert Manda. Very large, white, suffused primrose and rose.....	Each \$0.35
	American Beauty. Deep rich red, large and full; a very heavy flower.....	.35
	Black Beauty. Maroon, shaded black; fine formed with notched petals. A free bloomer on stiff stems.....	.25
	Brilliant. Vivid scarlet, of good size and fine form on good stems. A fine plant and profuse bloomer.....	.50
	Crema. Very large, creamy white; a fine plant and good bloomer.....	.50
	CRIMSON GIANT. Richest glowing red; very large size, and a very strong, vigorous grower.....	.25
	CROWN OF GOLD. Orange scarlet, edged gold; very effective.....	.25
	CUBAN GIANT. Very large; deep crimson shaded maroon, fine form, long stems.....	.35
	DELICE. Still one of the loveliest of this class, on account of it's wonderful color; a bright luminous pink entirely distinct. The flowers are held facing, well above the foliage on straight stiff stems.....	.35
	D. M. Moore. Very large and free bloomer on dwarf plants. Color rich dark velvety maroon shaded black; fine form.....	.50
	DR. TYRREL. A very large, rich bronzy golden yellow, shaded orange. A rather late flower of great size, on long stiff stems.....	.25
	Frank A. Walker. Lilac pink, of fine form and medium size, on long straight stems, a profuse bloomer.....	.35
	Fireburst. A massive flower, soft orange red, a free bloomer, fine for garden or exhibition.....	.50
	F. L. BASSETT. Clear purple, very profuse bloomer....	.25
	Flora. A splendid large, snow white, of finest form on good stems. An early and profuse bloomer.....	.35
	GEN'L J. B. SETH. Very large and perfectly formed with rather broad petals; color a rich strawberry red. An early and profuse bloomer.....	.25
	GOLDMINE. The ideal pure golden yellow decorative Dahlia. Large, perfect form, with full high centre and a profuse bloomer on stiff stems. Very early.....	.35
	GRAND DUKE ALEXIS. Very large flower with quilled petals. Color white, lightly edged lavender pink. A strong grower and free bloomer. One of the best.....	.50

We are the "Original Dahlia Specialist" and grow Dahlias because we love them.



QUEEN ELIZABETH

This new Paeony Dahlia shown in color above is the highest type yet produced in the class. Note the wonderful formation of the curled center petals, which completely cover the center. This illustration is reproduced from a photograph of a flower over 7 inches across. The color is a beautiful rosy mauve. The large flowers are facing, on very long ($2\frac{1}{2}$ to 4 feet) stems, slender, yet stiff, holding the flowers erect. The plant is a very clean, strong grower and free bloomer, every shoot produces a flower. It is a variety that just will bloom. A flower that should be in every collection. Valuable for cutting, exhibition and the garden.

The demand for Queen Elizabeth has exceeded our expectations. Each year it has been double the preceding year, until last year (the third) it was our best seller. It seems to do well all over the country, and unlike most dahlias, it improves as the season advances. The color improves, they keep longer and are at their best just before frost. Roots, 50 cents each.

SPECIAL OFFER. We will send one root each of the 4 colored cover varieties, Betty Austin, Isabel Street, Rosalia Styles and Colossal Pink and the 3 varieties Mary Steffenson, Queen Elizabeth and Golden West Cactus, shown on the colored inserts, 7 in all, for \$16.50.



Single Dahlia Colored Collection

Above we show a collection of 9 lovely single dahlias in natural colors. Full descriptions will be found under single and century dahlias. For great range and purity of colors, richness of shades, and delicacy of tints, no flower can compare with the newer single dahlias. All are early profuse bloomers, with long, slender, wiry stems. Wonderful for all cut flower purposes, and a riot of colors in the garden.

No. 1, Mrs. Jos. Lucas. A combination of Autumn shades. One of the largest and handsomest; each, 25c.

No. 2, Gloria. Very bright and effective flowers of great substance on long rigid stems; each 25c.

No. 3, Praxitelles. Very effective, the plant is dwarf and branching. A free and continuous bloomer; each 25c.

No. 4, Gloxinia. In marking and brilliancy of color resembles the gloxinia so much as to suggest the name; each 50c.

No. 5, Evelyn Century. Very bright and effective, an early and profuse bloomer. Delicate and chaste; each 25c.

No. 6, Cream Century. A delicate creamy white. Early and profuse bloomer; each 25c.

No. 7, George Young. Immense size clear yellow; strong, vigorous, with long stiff stems. Best yellow; each 35c.

No. 8, Autumn. A wonderful combination of Autumn shades. Large, free and fine; each 35c.

No. 9, Barton. A glorious flower of immense size and rich glowing crimson color; each 50c.



Decorative Dahlia, "QUEEN MARY." (See description, page 15)

PINK JACK ROSE. A pink sport of Jack Rose; a very free bloomer and fine for bedding.	Each	Tom Watson. A large decorative of the regular quilled type. Color a creamy sulphur	Each
Princess Juliana. A fine pure white of good size on long cane stiff stems, very profuse.	\$0.25	TRIXIE. A new variety of ideal habit of growth, 3 to 4 ft. high and branching; an extremely free bloomer. It is a cross of John Wanamaker and Flamingo. The form is about intermediate, with curled twisted and whorled petals and always a full high center. A profuse bloomer on long slender stems. Color a rich luminous crimson. A fine garden variety.	\$0.20
PROFESSOR MANSFIELD. A giant decorative of most unique coloring; a pleasing combination of yellow, red and white.35	Ulysse. An appealing combination of salmon rose, with golden yellow suffusion. Petals broad curling at tip, early and profuse.50
Progress. Large mauve, striped and penciled crimson25	VARIABLES. A grand variety of large size and fine form, with tips of petals cleft. Color rich bronzy yellow, tipped white; sometimes flowers are white, sometimes bronze, but always fine. A free bloomer35
Propaganda. Primrose yellow, lightly suffused crimson on reverse of petals.25	YELLOW DUKE. Canary yellow, quilled petals; a giant flower on long stems.35
RED DUKE. Very large, rich dazzling cardinal red; splendid form with quilled petals. A red Grand Duke Alexis.50	Zulu. This is the old Black Dahlia of the book of that name. We have had so many calls for this from sentiment, that we again list it.25
Souvenir de Gustav Doazon. One of the largest of all Dahlias, soft orange red.25	Special Offer. —One root each of the 67 selected Standard Decorative Dahlias described above, by Parcel Post, prepaid, for \$20.00.	
Souvenir de M. Silvent. Very large, clear yellow, penciled and overlaid scarlet.35		
Sunlight. Large, soft yellow, plant medium dwarf.25		
Sulphur King. Very fine, soft sulphur yellow of fine form75		
SYLVIA. Deep pink, tinting to light pink at the centre15		
Tenor Alvarez. A very large flower of loose formation and produced freely on long slender stiff stems. Color a luminous cerise penciled maroon.75		

The 46 years' experience of our chief expert is at your disposal.



View of a field of Cactus Dahlias

Paeony Flowered Dahlias

This is one of the newer types also called the Art or Artistic Dahlias. The true type resembles the Japanese Pacony; yet several of the most valuable and popular varieties differ from the true type.

Ann Duskin. A new and entirely distinct variety, with very dark rich foliage. The flowers are of good size, richest maroon, shading to jet black at center as the flower is opening. The fully open flower, has a dark instead of yellow center, like Ami Barillet. The plant is a free grower and produces the beautifully formed flowers on long slender erect stems.....	Each \$1.00
AUTUMN GLOW. A most distinct and striking autumn shade. The outer petals are deep pinkish scarlet, with yellow markings and tip, and each row of petals opens up softer against the darker background of the outer petals. A strong grower producing the large flowers freely on long stiff stems.....	.50
BARON G. DE GRANCY. A waxy, almost pure white; a flower of excellent type, perfect form and purity of color. The blooms are borne profusely on long graceful stems.....	.25
BERNICE. Soft rose pink, very broad petals, very large flowers on stiff slender stems.....	.35
BILLIE. Color light rose, tipped violet rose with a suggestion of yellow at the base of the petals, the general effect being a bright rose pink. Flowers are of beautiful form with petals curved and twisted, averaging at least six inches across on long stems.....	.75
CANADA. One of if not the largest of all white Pacony Dahlias. The flowers are massive, with heavy petals, and are held erect on long stiff stems. An early, free and continuous bloomer. The plant is strong, vigorous and healthy, exceptionally fine for cutting, exhibition or garden.....	2.00
CITY of PORTLAND. A magnificent new clear yellow pacony, of exquisite form and immense size, 8 to 9 inches across. A strong vigorous plant and free bloomer on long stems; for exhibition and the garden it cannot be excelled.....	2.50
Cream Beauty. A very profuse blooming creamy yellow, with long slender stems.....	.25
Cream King. A beautiful pale yellow of exquisite form.....	.75
DELICATINE. An exquisitely beautiful new pacony; white suffused pink, overlaid and shaded crimson of artistic form. Plant is dwarf branching, a profuse bloomer on long stiff graceful stems.....	.75
DIANA. Very large rich glowing crimson. Blooms facing on long slender stiff stems.....	1.00
DIEMONT VON BYSTEIN. Large white suffused and shaded blue lilac. Very fine form and a free bloomer....	Each \$0.50
DR. JOHN LANE. A most pleasing Pacony of the Geisha type, but larger and softer in coloring, while the plant is much stronger and more vigorous, with dark healthy foliage. Color yellow, suffused golden orange at base of petals, shading to rich bronzy scarlet toward the center and tinting lighter at the tip.....	2.00
Duchess of Brunswick. Large flowers of fine form on long stiff stems; color rich golden orange scarlet. A fine garden and exhibition variety.....	.75
Elsa. White suffused pink shaded and tipped crimson....	.25
F. R. AUSTIN. One of the most striking and valuable pacony Dahlias in existence. The beautifully colored flowers are of large size, averaging 6 to 8 inches across. Color, the outer petals are very long, creamy yellow, suffused, banded and shaded rich crimson; the inner petals are yellow at base tinting lighter, and suffused pink and crimson. The plant is a strong vigorous grower, an extremely early and free bloomer, and continues to bloom the entire season, making it most valuable for garden and exhibition.....	.50
FORDHOOK BEAUTY. An outstanding shade of bronzy red, delicately suffused with salmon and yellow. A beauty.....	.50
GEISHA. The most striking color combination, golden yellow, changing to bright scarlet at the center of petal and back to gold at the tip. Giant flowers on long wiry stems.....	1.00
Hampton Court. A very large silvery pink.....	.50
Holman Hunt. Deep rich crimson shaded darker. A free bloomer on long stems.....	.50
JESSIE CAIN. Golden yellow at base of petals, suffused and blotched scarlet, tipped yellow. A beautiful flower of large size with broad, slightly pointed, petals.....	.50
JOHN GREEN. Yellow, tipped red. An early and extremely profuse bloomer; long stems.....	.25
Konigen Emma. Very large cerise pink.....	.25
Mildred. Soft yellow, fine.....	.50
MME. J. COISSARD. Very large, with two to three rows of immense petals of great substance. The color effect is most distinct and charming; bright rosy crimson, with lighter markings, and a pure white zone around the yellow disc.....	.50
Mme. Van Loon. Soft orange scarlet, large and free....	.25



"MRS. HOWARD M. EARL"

MRS. HOWARD M. EARL. An exquisitely lovely paony, light yellow, suffused and overlaid carmine scarlet, tipped yellow. A refined and glorified Geisha. Plant is very strong, producing the flowers on long graceful stems. Owing to the great demand, stock is very limited. (See illustration above)	Each \$1.50	QUEEN ELIZABETH. See description on colored insert pages	Each \$0.50
Mrs. Thomas Bush. Color reddish salmon tinting to primrose yellow at center and tipped rose; of large size on long stems75	RED CROSS. Yellow, shaded old gold suffused scarlet. A very striking variety; of strong growth 6 ft. high, of large size, fine form and produced on long stiff stems	1.50
MRS. WM. KERR. White, suffused pink, overlaid bright carmine. Beautiful form75	RUFFLES. A new sensation that attracted attention the past season. It is a giant ruffled paony collarette. Red veined and tipped light bronzy yellow. The collar petals are light yellow, making it most effective, a profuse bloomer. In addition to the ruffled flowers, the leaves are also ruffled. It is a strong vigorous grower and bears the giant flowers most gracefully50
OLD SOL. Primrose yellow, shaded coppery red, with golden bronze suffusion. A splendidly formed paony Dahlia, of large size, on long graceful stems50	Sensation. Bright scarlet, heavily tipped white. Plant a very strong vigorous grower and profuse bloomer on long stiff stems35
Phenome. Large, rich salmon; a strong plant and free bloomer on long stiff stems35	SHAWMONT. Bright crimson with white spot at tip of each petal. Very pleasing35
PINK PERFECTION. Luminous silvery pink, of large size and splendid form on long stiff stems. The first flowers come fully double75	Thos. Walkins. Flowers are large, of beautiful form and coloring. White suffused cerise, heavily shaded an l tipped crimson25
POINSETTIA. Very bright and effective. Brilliant scarlet with long broad, but pointed petals like the poinsettia35	TUCKERTON. Large, rich maroon25
Polar Star. Large, pure white, of fine form on long stems75		

The author is acknowledged the leading authority on Dahlias.

TYRREL AUSTIN. This giant new variety is a seedling of the well-known F. R. Austin, but is entirely distinct, being larger, entirely distinct in color and formation. Size 7 to 9 inches. Color, outer petals a rich carmine red, inner petals are beautifully blended and veined carmine, shades of yellow and pink. The petals are twisted and whorled in a most pleasing manner. An early and profuse bloomer and strong vigorous grower. A great acquisition. Height, 5 feet.	Each	MARY PICKFORD. An improved Arabella, large, soft primrose, edged and suffused rose. A strong vigorous grower and free bloomer that will supplant that old favorite.	Each
UNIQUE. This is not only unique in coloring, but in form. Half of the flowers are perfectly full to the center, of fine regular form; the other half of them have numerous curled and twisted petals, almost covering the centre and other fantastic forms. Color is rich rosy mauve, with crimson shade at base of petal, very striking and effective.	\$1.50	May Lomas. Pale lavender, edged lavender blue. Quite distinct.25
VARIEGATED LISTZ. Dark oriental red with yellow tips and markings. A superior variety for decorations, especially where a bronzy effect is wanted.25	METEOR. Large, bright vermilion, a free bloomer.35
Victory. Flowers large, yellow suffused amber.	1.00	MISS HELEN HOLLIS. Very large, bright red, with quilled petals; always full at the center. One of the best.50
WM. AUSTIN. A strong vigorous plant that comes into bloom early and continues until frost. Flowers large, finely formed; color white, suffused cerise, tipped carmine; very long stiff stems.35	Mme. H. Furtado. A large, very finely formed, snow white.35
Special Offer.—One root each of the above 46 Superb Paeony Dahlias by Parcel Post, prepaid, for \$27.00.		Mme. Alfred Moreau. Large, cerise rose; long stiff stems.35

Select Ball Dahlias

A. D. LIVONI. Clear cerise pink, quilled petals. A free bloomer and a great favorite (see illustration, page 21)	Each	MRS. THOS. SHARP. This is one of the most exquisite in coloring and habit. A rich golden orange of rather loose formation, but very regular and always full to the centre; medium to large size. The plant is a dwarf branching, spreading habit and an extremely profuse bloomer. Fine for garden or cutting.	Each
Apolyn. Brightest scarlet.25	OLIVE THOMAS. A great improvement over Arabella and Mary Pickford. A truly beautiful ball of large size, splendid form and exquisite coloring. Color creamy white, shading to primrose, suffused rose and heavily tipped carmine rose. Plant is strong, vigorous and healthy. The flowers are produced freely on long stiff stems.	1.50
Arabella. Primrose suffused pink edged rose.25	Penelope. White flaked rosy lake, beautiful effect.25
Arthur Le Favour. Very large yellow penciled and striped cardinal red.50	Pink Swan. A silvery pink sport of White Swan.25
Aurora. Yellow suffused and tipped orange.25	Queen Victoria. Rich golden yellow.25
Bonton. Medium size, rich crimson, shaded darker. A free bloomer of large size on long stems.25	Rose. An exquisite ball dahlia of full regular form and a bright lively carmine rose color; it is very distinct, large on long, stiff stems.50
BOSTON HUSSAR. A cross of Bessie Boston and Red Hussar. It is very much larger than Hussar, with the same fiery red color and the cleft petals and formation of Boston, without its heaviness. A splendid and most showy variety.50	Rosebud. Large, pink, heavily tipped rosy carmine, edged crimson.35
CAROL. A beautiful ball of small size, but beautiful round full form, with quilled petals and clear pink color. Large strong plants and produces the lovely flowers freely on long stiff stems.25	Ruby Queen. An old favorite. Ruby red richly shaded. A profuse bloomer on long stiff stems.25
Chas. Lanier. Yellow buff, shaded darker, very large and a strong vigorous grower.35	SNOW. Pure snow white. This variety is often sold as Storm King.25
Clara Seaton. Very large yellow, suffused golden buff. Very large, quilled petals.50	Stradella. Deep purple crimson, early and profuse.25
Crimson Globe. Bright crimson. A profuse bloomer.25	Striped Banner. Scarlet, tipped white, dwarf; profuse.25
Dawn of Day. Primrose yellow, suffused and edged rose.35	Susan. Soft blush pink, medium size. Good form.25
Della Dorsheimer. Large, soft shrimp pink, quilled petals; long slender stems.35	TANSBORO. Crimson shaded maroon, white suffused crimson at base of petals, early and profuse.25
DOROTHY DE LA MARE. A magnificent new variety of the most delicate pink color, perfect ball form, the outer petals reflexing to the stem. The plant is a strong, heavy and vigorous grower, producing the giant flowers on long stiff graceful stems. An early, free and continuous bloomer.	1.00	WHITE SWAN. Pure white, the standard commercial white Ball Dahlia. A strong grower and free bloomer.25
DOROTHY PEACOCK. The world's best pink.50	W. W. RAWSON. Very large with semi-quilled petals. Long upright stems, color white, delicately flushed and suffused lilac.50
D. P. Perfection. Very full, fine form, and a profuse bloomer. Color primrose, shaded and tipped buff rose.50	Special Offer.—One each of the above 48 Select Ball Dahlias by Parcel Post, prepaid for \$15.50.	

Pompon Dahlias

This class is a miniature form of the show and fancy Dahlias, having the same round, ball like form, but much smaller in size. The plants are also smaller, of branching habit, producing the flowers in endless profusion. As they can be cut in sprays they are valuable for bouquets and for small grounds. Each

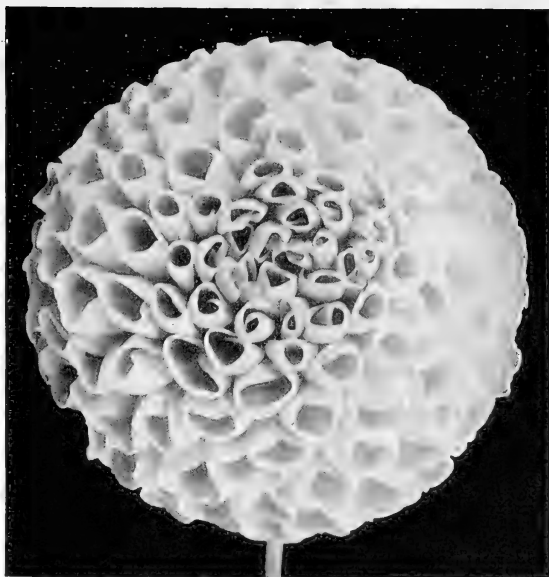
Bobby. Plum color; very fine; free flowering sort.	\$0.25
Clara Harsh. Yellow tipped crimson. Very pretty.25
CLARISSA. Pale primrose. A free bloomer.25
Corona. A small pompon decorative, color pure white; fine for cut flower work as well as the garden.25
Elfin. Very small and dainty. Light primrose yellow.25
KLEIN DOMITEA. Bright golden terra-cotta. Profuse.25
Laddie. Light crimson edged rose.25
Lassie. Yellow, edged and tipped white.25
LITTLE HERMAN. Cardinal red, shaded maroon, tipped white.25
Little Sweetheart. Red, tipped white.25
Madeline. Primrose, edged rosy purple.25
Splendens Imbricata. Vivid cardinal red.25
SNOWCLAD. The best pure white pompon.25
Verdiflora. The so called green dahlia. Valuable only as a curious freak.25

Special Offer.—One root each of the above 14 Pompon Dahlias by Parcel Post, prepaid, for \$3.00.

Best Single Dahlias

The ordinary single Dahlias have been superseded by the Century Dahlias, but a few of the most beautiful or distinctive are appreciated, especially where color effects, smaller flowers or dwarf plants are needed.

- AMI BARILLET.** The purple foliage Dahlia. Each Entirely distinct. Flowers pure garnet, rich and glowing with a dark center, until the pollen appears. A free bloomer and strikingly effective for all purposes. \$0.25
- APPLE BLOSSOMS.** Soft pink, heavily tipped carmine pink edged crimson, changing to softer tints as the season advances.25
- FLORABUNDA.** Very free, mauve, with red zone around yellow center.25
- HAZEL HEITER.** A high colored single, a fine combination of pink, crimson and maroon.25
- MONA.** Bright salmon, tipped pure white.25
- PRAXITELLES.** The color is a deep velvety violet maroon, each petal tipped white. The plants are dwarf, branching and profuse bloomers; the colors distinct and striking. This is undoubtedly the richest, the most popular and most effective of all fancy Single Dahlias.25
- RANTENDELIN.** Another fancy single. Color pure white, each petal has a narrow margin of deep crimson on each side. A very profuse bloomer. Plant dwarf and branching. Height, 3 feet.25
- Rebecca Mayhew.** A beautifully formed pure white; dwarf habit and free bloomer on long slender stems35
- Red and White.** Red, with white band running through center of petals and tipped white; beautifully formed and free bloomer.25
- ST. GEORGE.** Clear canary yellow, a splendid plant, branching, very profuse on long slender stems.25
- Special Offer.—One root each of the 10 Best Single Dahlias, by Parcel Post, prepaid, for \$2.00.**



Select Ball Dahlia, "A. D. LIVONI." (See description, page 20)

- Eckford Century.** Immense size, pure white, spotted pink, penciled crimson. A profuse bloomer on long stiff stems. \$0.25
- EVELYN CENTURY.** Very bright and striking, white, outer half of petals a bright violet cerise making a beautiful white zone around the yellow disc.25
- GARNET CENTURY.** Rich glowing garnet, fine form, on long stems, a very profuse bloomer.35
- GEISHA CENTURY.** Yellow and scarlet, very bright and attractive; strong grower with long stiff stems.25
- GEORGE YOUNG.** A magnificent pure yellow of largest size. Long stiff but graceful stems.35
- GLADYS CENTURY.** This new seedling is one of the most remarkable in coloring. A rich carmine band runs through the centre of the outer half of the petal, margined on either side with carmine pink; the inner half of each petal is white making a white zone around the yellow disc. Most striking and effective.50
- GIANT CENTURY.** Immense size, finest form and beautiful color combination. Color is yellow at base, shading to bronzy salmon and crimson, with lighter tips. Undoubtedly the largest single Dahlia in existence, producing the giant blooms 7 to 10 inches across. (See illustration, page 22)50
- Giant Red.** Enormous size and a rich oriental color, with an effective yellow spot at tip of petals.50
- GLORIA.** Rich yellow, tipped and penciled vivid red; flowers of great substance, on long rigid stems. Very bright and effective.25
- GLOXINIA.** In marking and brilliancy of color, resembles the Gloxinia so much as to suggest the name. Color, brilliant cerise, tinting lighter at tips, with white at base of petal, making a white zone around the yellow disc.50
- GOLDEN CENTURY.** Rich golden yellow, suffused golden amber.35

New and Superb Century Dahlias

Are the last word in this popular type and we take great pleasure in introducing such a grand set, in such a wide range of colors, types and characteristics as embraced in the following collection.

- AUTUMN CENTURY.** A fine bronzy variety; large fine form on long stems. Color, buff yellow at base of petals shading through amber to red, with an iridescent sheen. \$0.35
- BARTON.** Rich vivid crimson, large size, finest regular form and a profuse bloomer on long stems.50
- BRONZE CENTURY.** A magnificent new century of immense size; rich bronzy yellow, produced profusely on long stiff stems. Splendid form and substance; especially effective under artificial light.50
- CARDINAL CENTURY.** Clear, rich cardinal red. Large, splendid form.25
- Cerise Century.** Large, bright cerise; very fine on long stems, profuse bloomer.25
- CONTRAST.** Very large, crimson tipped white. Borne on long stiff stems.50
- CREAM CENTURY.** Delicate creamy white, beautiful form on long stems.25

Visit us and see the World's Best Dahlias in bloom next September and October.



Reduced Size. "GIANT CENTURY." (See description, page 21)

JAMES WELLER. The finest of all single Dahlias, of largest size and the most beautiful color combination—a rich golden yellow, with one-third of each petal overlaid soft rosy red. The two colors blend most harmoniously and are very effective. The big flowers are produced freely on long stiff stems, and are remarkably long keepers. This variety is most striking and effective, and is one of nature's masterpieces. Height, 5 feet.....	Each	PURITY. This newest and best pure white century has been grown by the originator, who raised it from seed purchased from us, 9 inches across; perfect form on long stiff stems.....	Each
JESSIE. The greatest white single Dahlia in existence. Exquisite form, pure white, of large size and borne profusely on long slender but stiff stems.....	\$1.00	PURPLE CENTURY. Rich royal purple, immense size; a most popular color, beautiful form.....	\$1.00
JOSEPHINE. Large pure white, free bloomer, stiff stems, very fine.....	.50	Red Century. A free bloomer, red; of fine form and substance, cutting or garden variety.....	.25
MRS. JOSEPH LUCAS. A combination of autumn shades. Immense size, beautiful form, produced profusely on good stiff stems. Yellow suffused orange and overlaid salmon pink. One of the largest and handsomest.....	.50	ROSE PINK CENTURY. The largest and best deep pink; enormous flowers on long three feet stems; a sure and continuous bloomer, vigorous plant.....	.25
OCALA CENTURY. Very large, clear red, tipped yellow; very effective.....	.25	SCARLET CENTURY. Bright glowing scarlet.....	.25
PEACHES and CREAM. A variety of such loveliness that we have always sold out before we could work up a stock. Color cream, suffused peach pink.....	.35	SUNSET CENTURY. Most strikingly effective. Yellow at base of petal outer half deep rich vermilion. Very bright and effective for garden, or cutting.....	.35
PENCILLED CENTURY. Lilac pink, penciled and striped deep crimson.....	.50	VELVET CENTURY. Rich velvety maroon, very fine.....	.25
PINK CENTURY. Clear, soft pink, shading to clear deep pink. Very beautiful and chaste, long stiff stems.....	.35	White Century. Very profuse bloomer and strong grower; this is a dark stem variety and is much harder than the light stem sorts.....	.25
		YELLOW CENTURY. A magnificent yellow of largest size, beautiful form and a profuse bloomer on long stiff stems.....	.25

Special Offer.—One root each of the above 35 New and Superb Century Dahlias by Parcel Post, prepaid, for \$12.00.

SPECIAL DAHLIA COLLECTIONS

Arranged especially to give extra value to those who are not acquainted with the various varieties.

Collection No. 1—4 Cactus, 4 Decoratives . . . \$1.00

Lawine	Jack Rose
Libelle	Mrs. C. H. Breck
Marjorie Castleton	Prof. Mansfield
Success	Sylvia

Collection No. 2 . . . \$2.00

Autumn Century	Mina Burgle
Gen'l Pershing	Mrs. Thos. Sharp
Klein Domitca	Queen Mary
Maurice Revoire	Unique
Yellow King	White Swan

Collection No. 3 . . . \$2.00

Albert Maumene	L. Kramer Peacock
Dorian	Marley
Dorothy Peacock	Mary Pickford
Little Herman	Queen Elizabeth

Collection No. 4—8 Remarkable Cactus Dahlias . \$4.00

Frances White	Mrs. Leo Niessen
F. W. Fellows	Mrs. Warnaar
Lumesch	Nibelungenhort
Mme. Eschenauer	Rube Girl

Collection No. 5—8 Grand Decorative Dahlias . \$4.00

Break O'Day	Marcella
Hortulanus Piet	Mrs. Bertha Morris
Hortulanus Witte	Mrs. J. Harrison Dick
Le Grand Manitou	Patrick O'Mara

Collection No. 6 . . . \$10.00

Bianca	Mrs. F. F. Schock
Canada	Pink Perfection
Insuline	Priscilla
Medusa	Tyrrel Austin

Collection No. 7 . . . \$14.50

Betty Austin	Isabel Street
Colossal Pink	Rosalia Styles

Collection No. 8 . . . \$25.00

Claire Kulp	Mary Dorr
Dream Girl	Olive Nyce
Kathryn Konges	Sarah Harley
Kissimcee	Senator Baird
Manatee	Sophie Morey

In order that the superiority of these varieties may be better known, we offer the entire set of eight collections sixty-four varieties in all, each carefully labeled true to name by mail, postpaid for only \$60.00.

BEAUTIFUL DAHLIAS, LOW PRICES

12 Decorative, our selection, all named . . . \$2.00	12 All Classes, our selection, all named . . . \$1.50
12 Cactus, our selection, all named . . . 2.00	12 Beautiful Double mixed, not named . . . 1.00
12 Peony Fl., our selection, all named . . . 2.00	12 Beautiful Single mixed, not named . . . 1.00

Our \$5.00 Surprise Collection for those who want the greatest value for their money. Our selection filled after May 1st. Our \$10.00 Surprise Offer.—Filled only after May 1st, for those who want our selection of 12 World's Best Dahlias.

We will send free on request our pamphlet on culture.

New Book "The Dahlia"—Fifth Edition

By Lawrence K. Peacock, 80 pages, 7¼ by 10¾, beautifully illustrated. Fifth and revised edition. A practical treatise on its habits, characteristics, culture and history by one who for 38 years has never failed to have a crop of the finest blooms, in their season regardless of conditions. Price, 50c. postpaid. FREE on request with all orders amounting to \$5.00 or more.

WHAT OTHERS SAY

PEMAQUID POINT, ME., June 6, 1922.

PEACOCK DAHLIA FARMS, Berlin, N. J.

Gentlemen:—"The Dahlia" arrived by this evening's mail and I have been reading it since supper, it is now 1 A. M. and I am stopping long enough to get this order off to you, if I am not too late will you please send by parcel post the enclosed order. If you cannot fill inclosed order send me your Surprise Collection, also another copy of "The Dahlia."

"The Dahlia" is a wonderful book for an amateur, the best by all odds that I have ever read.

Yours truly, F. H. THEAKSTON.

462 MARION AVE., KENOSHA, WIS., May 16, 1922.

DEAR SIRS:—Received your dahlia Queen Elizabeth today which was missing from the order what I got last week, and I must thank you for it. I knew you would make it all right with me because you are a good company to deal with, and you always treat a customer fair and square. But being so busy with orders anybody might make a mistake. Wishing you good success.

I remain yours, L. DE YOUNG,

KINGSFORD, MASS., July 20, 1922.

PEACOCK DAHLIA FARMS, Berlin, N. J.

GENTLEMEN:—I am writing you to tell you what wonderful creations your Dahlias are, J. H. Jackson bloomed July 3rd; Insuline July 10th, it should be named "Tints of Gold," I have never seen anything like it.

Golden West Cactus is good and Bianca, and Copper measured about 7 inches, they are wonderful under artificial light. Mina Burgle is good. I have all the others yet to bloom and I am looking forward with great pleasure. The bulbs you sent me seemed small but the foliage and blooms are wonderful. Everyone who sees them says they are exhibition blooms, I will write you later of the bulbs you sent me for trial. You will certainly get my order next year. Very truly, EDNA MAGLATHLIN.

BRIDGETON, N. J., Jan. 9, 1922.

PEACOCK DAHLIA FARMS, Berlin, N. J.

DEAR SIRS:—Will you please send me a copy of your illustrated Dahlia 1922 catalogue as soon as you have it published as I am in the market for a few bulbs, and I understand you have what I want, I sent through a friend last year and got two bulbs which turned out well. I had several blooms from "Queen Elizabeth," 7½ inches in diameter, and the other "Golden West" was just grand, I have over 100 different varieties and would like to add many more.

Yours truly, OLIN LANG.

PORT NORRIS, N. J., May 15, 1922

MR. L. K. PEACOCK:—As I worked for you in 1900 and know your Dahlias are just as you represent them to be, am sending you a large order. Please send them as soon as you possibly can.

Yours truly, FRED PETERSON, R. D. 1. Box 52.

SOUTH 6th St., MAYFIELD, KY., April 12, 1922.

PEACOCK DAHLIA FARMS, Berlin, N. J.

GENTLEMEN:—Please send me the following Dahlias immediately: Your Dahlias are the most wonderful grown.

Very truly, MRS. H. C. LEWIS.

WEST POINT, PA., May 10, 1922.

PEACOCK DAHLIA FARMS, Berlin, N. J.

GENTLEMEN:—I hope it is not too late to send in an order, but to-day when I brought my Dahlia roots from the cellar I found some of them were no good at all and I do want some of the same kind I had last year. Now if you still have . . . Please send as soon as you can so I get them planted. No one in our neighborhood had such lovely Dahlias as I had last year. Everyone who saw Golden West and Minnie Burgle said they could scarcely believe they could grow to such a size. Asking you again to send as soon as possible. I am sincerely, MRS. JOS. SHUMAN.

PEACOCK'S BEST DOZEN GLADIOLUS

We grow gladiolus for commercial cut flowers and we offer the following as our selection of the 12 best varieties that will give the greatest satisfaction to the most critical. The size, strong healthy growth, length of flower stalk, purity of colors, and keeping qualities have been considered. Try our specially grown mammoth bulbs.

- AMERICA.** The finest soft pink; flowers very large, with great long spikes. The best of its color. 10c. each; 3 for 25c.; 12 for 85c.; 25 for \$1.60; 50 for \$3.00; 100 for \$5.50.
- BARON HULOT.** The best of the blues; a rich violet purple of good size on a strong graceful spike. 20c. each; 3 for 50c.; 12 for \$1.75; 25 for \$3.25; 50 for \$6.00.
- CHICAGO WHITE.** The very best early white with lavender markings in the throat. 10c. each; 3 for 25c.; 12 for 85c.; 25 for \$1.60; 50 for \$3.00; 100 for \$5.50.
- GRETCHEN ZANG.** Very large blooms produced freely on very long spikes. Color, a beautiful soft melting shade of pink, blending into scarlet on the lower petals, forming an unusual blending of colors. One of the finest and loveliest of all. 20c. each; 3 for 50c.; 12 for \$1.75; 25 for \$3.25; 50 for \$6.00.
- HALLEY.** Enormous open flowers of a delicate salmon pink, tinting lighter at the center, with a cream yellow and carmine blotch. Very early. 10c. each; 3 for 25c.; 12 for 85c.; 25 for \$1.60; 50 for \$3.00; 100 for \$5.50.
- HERADA.** Blooms of immense size on tall straight spikes. Massive in every way. Color pure mauve, glistening and clear, with deeper markings in throat. 20c. each; 3 for 50c.; 12 for \$1.75; 25 for \$3.25; 50 for \$6.00.
- MRS. F. KING.** Enormous flowers, of a delicate flame pink, shading to soft scarlet. A very strong grower with immense flower spikes. 10c. each; 3 for 25c.; 12 for 85c.; 25 for \$1.60; 50 for \$3.00; 100 for \$5.50.
- MRS. FRANK PENDLETON.** One of the grandest of all, that should be in every garden. Delicate salmon pink, with brilliant, deep red blotches in the throat. A strong grower, with very large flowers on long spikes. 15c. each; 3 for 40c.; 12 for \$1.50; 25 for \$2.75.
- PANAMA.** The best rose colored gladiolus, very long spikes of large, deep rose, self colored flowers. A great acquisition. 15c. each; 3 for 40c.; 12 for \$1.50; 25 for \$2.75; 50 for \$5.00.
- PEACE.** A wonderfully, strong vigorous variety, with very long spike of giant white flowers, with pale lilac penciling on the two lower petals. 15c. each; 3 for 40c.; 12 for \$1.50; 25 for \$2.75.
- SCHWABEN.** Clear canary yellow, tinting to soft sulphur yellow; giant spikes of giant flowers. A strong vigorous grower. 15c. each; 3 for 40c.; 12 for \$1.50; 25 for \$2.75; 50 for \$5.25; 100 for \$10.00.
- WILLIE WIGMAN.** One of the largest and most striking varieties. Pure white, shading to shell pink, with a glistening dark red throat. Very early. 15c. each; 3 for 40c.; 12 for \$1.50; 25 for \$2.75; 50 for \$5.50; 100 for \$10.00.
- SPECIAL OFFER.** One each of above, mammoth bulbs labeled by mail postpaid for \$1.40

WHAT OTHERS SAY

2625-6th St., TUSCALOOSA, ALA., March 27, 1922.

PEACOCK DAHLIA FARMS, Berlin, N. J.

GENTLEMEN:—I am sending you an order from the neighborhood, please fill as near as possible and with good strong bulbs; this order came from "Golden West Cactus, Queen Mary and Elizabeth," taking blue ribbon at County Fair last fall, send these to me as soon as possible.

Very truly yours, MRS. EMMA JENKINS.

15 S. CORNWELL PLACE, VENTNOR, N. J., Sept. 8, 1922.

MR. L. K. PEACOCK, Berlin, N. J.

DEAR MR. PEACOCK:—Thanks to your kindness in sending me such fine bulbs last spring I have made a great success of my Dahlia garden, and everybody admires it. I cannot find any Dahlias here in Ventnor that even approach mine.

Will be at the Dahlia Farm sometime this fall.

Yours cordially, FRANK J. MYERS.

BUTLER, PENNA., June 5, 1922.

PEACOCK DAHLIA FARMS, INC., Berlin, N. J.

GENTLEMEN:—In answer to your letter of May 27, I received the replacement of H. H. Thomas and Duchess of Marlboro, which must have been sent by return mail or very short time after receipt of letter. I thank you very much for the attention and will surely remember this next season, because it certainly was fine service. Very truly, H. W. BOYD, 245 W. Fulton St.

375 HIGHLAND AVE., ORANGE, N. J., June 1, 1922.

PEACOCK DAHLIA FARMS, Berlin, N. J.

GENTLEMEN:—Please pardon my tardiness in acknowledging the additional box of tubers which came as a great surprise. This box came in perfect condition, good tubers all plainly labeled, I thank you. I had no idea when I wrote to tell you how my order was received that you would duplicate it. It was a grateful thing to do and I appreciate the effort on your part to make good. Am looking forward to some charming and interesting varieties.

Very truly, MRS. W. E. SHAFER.

1136 N. 13th St., BIRMINGHAM, ALA.

PEACOCK DAHLIA FARMS, Berlin, N. J.

GENTLEMEN:—Enclosed find my check for which mail me the enclosed list of Dahlias. The ones purchased from you last year were most magnificent.

Yours truly, C. A. BROWN.

SECANE, DEL. CO., PA., May 1, 1922.

PEACOCK DAHLIA FARMS, Berlin, N. J.

GENTLEMEN:—As my business dealings with you have been very satisfactory, would state that hereafter you will receive all my orders for Dahlias. I herewith enclose money order for which please send by parcel post the enclosed list of roots as soon as possible, and by so doing you will oblige.

Yours truly, ROBT. RITTERSBACH.

405 PARK AVE., NEW YORK CITY, May 20, 1922.

PEACOCK DAHLIA FARMS, Berlin, N. J.

DEAR SIR:—The Dahlias came to-day and I want to thank you for refilling the order so promptly.

Sincerely yours, LILY CRAM.

86 W. 5th St., BAYONNE, NEW JERSEY.

PEACOCK DAHLIA FARMS, Berlin, N. J.

GENTLEMEN:—Please send me last spring's catalogue, and also let me know if the plants I bought of you last spring have tubers on this fall, the blooms are gorgeous on them now, thank you.

Respectfully, MRS. J. M. METCALT.

2114 ELLIOTT AVE., NASHVILLE, TENN., June 6, 1922.

PEACOCK DAHLIA FARMS, Berlin, N. J.

GENTLEMEN:—I want to thank you for your repeated efforts to make good the bulb of "Pat. O'Mara," which was decayed. The little plant reached me in fine condition and is now growing nicely, and I am very proud of it. Your good treatment will certainly bring you more orders from myself and my friends.

Thanking you, I am sincerely,

MRS. J. N. GANT.



Rosalia Styles

COLOSSAL PINK 19104. Decorative (see natural color reproduction on last cover page). This is the variety that attracted so much attention the past two years at the Wanamaker exhibitions and on our grounds. A most wonderful new variety that has all the good qualities of Colossal Peace, with none of its faults. It is fully as large in diameter, but several times as deep; of massive build, always full to the center and will last longer on the plant than any other variety. Color clear pink, tinting lighter at tips of petals and at center. Plant dwarf, 3 to 4 ft. high. A strong vigorous grower, of branching habit, and an early and profuse bloomer. For exhibition it is a winner—immense size, fine form, pure color and keeping qualities. An ideal garden plant. Strong plants, \$3.00 each. A limited number of roots, until exhausted, \$5.00 each.

ROSALIA STYLES Colossal Paony. The largest and best pink of this class. Beautiful form, immense size, stiff stems, strong, vigorous, sturdy plant, a free and continuous bloomer, while last but not least, a wonderful live lustrous color—bright tyrian pink, tipped lighter; reflex pink. The plant is a strong, vigorous, sturdy grower, of medium height (5 feet), branching and producing the giant flowers freely on long cane stiff stems. A superb cut flower variety, on account of its clear color, good stems and remarkable shipping and keeping qualities. The early flowers are quite full to the center, on first opening, giving good depth. On the exhibition table, the 8 to 9 inch flowers are held erect without support by their own stems. The plant is simply perfect for the garden. Has attracted the greatest attention wherever seen and will be universally grown. Strong plants, \$2.00 each. Roots, \$3.00 each.

THE WORLDS BEST DAHLIAS

NEW CREATIONS AND FRIENDS



COLOSSAL - PINK

PEACOCK DAHLIA FARMS

FARMS
WILLIAMSTOWN JUNCTION
NEW JERSEY

MAIL ADDRESS
BERLIN POST OFFICE
NEW JERSEY