

THE *Madkinian* 1953






YADKIN COUNTY PUBLIC LIBRARY

P. O. BOX 807

YADKINVILLE, NC 27055

Member Of

NORTHWESTERN REGIONAL LIBRARY

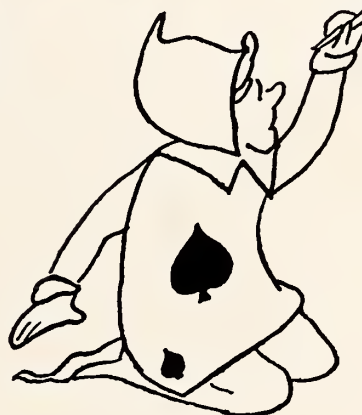


Digitized by the Internet Archive
in 2014

<https://archive.org/details/yadkinian19531953yadk>

THE YADKINIAN

1953



Published by
The Senior Class
of
Yadkinville High School
Yadkinville, North Carolina

Editor-in-Chief-----Robert Shore
Business Manager----Johnny Reece

Foreword

As the years pass by, our days at Yadkinville High will seem like a wonderland to us. As Alice in Wonderland turned to the looking glass, so shall we turn to our 1953 YADKINIAN to see ourselves in high school again. Through the looking glass, our annual, may we be reminded of the happy experiences we had during our "dear old golden-rule days."



DEDICATION



MR. HERBERT L. CAMERON

For his loyalty to all the school activities, for his friendliness to all the students and teachers, for his dependability and sincerity in all he undertakes, for his leadership in the classroom and in such activities as the beautifying of the school grounds, we, the Senior Class of 1953, respectfully dedicate our edition of THE YADKINIAN to Mr. Herbert L. Cameron, our beloved agriculture teacher.



THE YADKINIAN STAFF

Nell Spillman, Associate Editor, Art Editor
Robert Shore, Editor-in-Chief



Bobby Holcomb, Circulation Manager
Johnny Reece, Business Manager
Shirley Todd, Advertising Manager



Jonet Hoynes
Sports Editor



Scottie Sue Adams
Senior Editor



Bill Dull, Class Editor
Potty Long, Activities Editor



Sonford Willord
Art Editor

Administration



ADMINISTRATION

MR. FRED C. HOBSON

Superintendent
of
Yadkin County Schools



YADKINVILLE
SCHOOL
DISTRICT
COMMITTEE

Mr. L.R. Hutchins, Mr. James Williams, Mr. Ernest Long, Chairman.

OFFICERS
OF THE
YADKINVILLE
PARENT-TEACHER
ASSOCIATION



Mrs. A. H. McLeod, Vice-President; Mr. Luther Todd, President; Mr. Bickett Holcomb, Treasurer; Mrs. LaVerne Shore, Secretary.



FACULTY

MR. R. P. BUCHANAN

Principal

MRS. LOGENE HOOD

Science, English

MRS. ELVA HOOTS

Mathematics



MR. MAX O. WELBORN

History
Physical Education

MR. BILL B. BRIDGEWATER

Physical Education
History

FACULTY

MRS. SUSAN STEELMAN

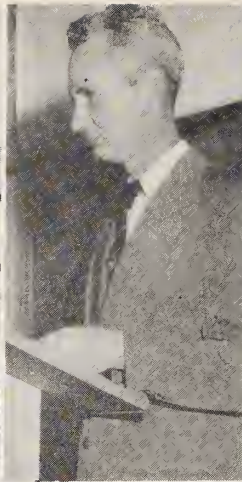
Home Economics

MR. HERBERT L. CAMERON

Agriculture

MRS. MARY LOUISE BUCHANAN

Business Education



MISS MARY HARDING

English



MISS BEVERLY MOORE

French, English

ELEMENTARY SCHOOL FACULTY



First row: Miss Mildred Mockie, Miss Noro Shore, Mrs. Jane Longston, Mr. James Langston, Miss Betty Hutchens. Second row: Mrs. Mildred Stryker, Mrs. Effie Speer, Miss Noncy Zoc-hory, Mrs. Lucy Brown. Third row: Mrs. A.E. Holton, Mr. Kenneth Matthews, Mrs. Elizabeth Shore, Miss Sarah Holcomb, Mr. Allan Jessup, Miss Morgoret McConnell, Mrs. Juanito Brandon. Inset: Mr. J.R. Wells, Supervisor.

Seniors





SENIOR OFFICERS

Nell Spillman.....Reporter
 Bobby Holcomb.....Vice-President
 Janet Haynes.....Treasurer
 Robert Shore.....President
 Shirley Todd (kneeling).....Secretary

MASCOTS

Kathy Shore
 Robbie Hutchens



SENIORS

SCOTTIE SUE ADAMS

"Come live in my heart and pay no rent." Library Staff 4; Office Staff 2; Class Officer 2, 3; Junior Class Play; Dramatics Club Play 3; Club Officer 4; Glee Club 1, 2, 3, 4; Press Club 2; FHA Club 2; Dramatics Club 1, 3, 4; Annual Staff; Superlative.



JO ANN ATWOOD

"Think all you speak; but speak not all you think." Club Officer 3; FHA Club 2, 3, 4; 4-H Club 1, 2, 3, 4; Superlative.

WALSER RALPH BATES

"I awoke one morning and found myself famous." School Bus Driver 3, 4; Class Officer 3; Club Officer 4; FFA Club 1, 2, 3, 4; Superlative.



BARBARA ANN CORNELIUS

"A joke's a very serious thing." Lunchroom Worker 4; Class Officer 1, 2; Basketball Manager 4; Junior Class Play; Club Officer 3, 4; Glee Club 2, 3, 4; FHA Club 1, 2, 3, 4; 4-H Club 1, 2, 3, 4; Superlative.

CHARLES BRUCE DAVIS

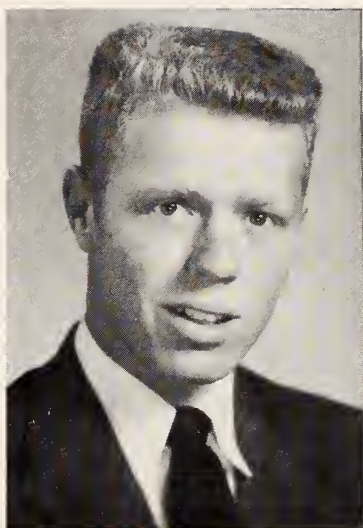
"There is no knowledge that is not power." Football Manager 2; Club Officer 3; FFA Club 1, 2, 3, 4; Superlative.



DAVID DELANO DINKINS

"I know of no way of judging the future but by the past." Basketball 1, 2, 3, 4; Football 2, 3, 4; Football Tri-Captain 4; Baseball 1, 2, 3; Junior Class Play; Club Officer 4; Glee Club 1, 2, 4; FFA Club 1, 2, 3, 4; Superlative.

SENIORS



ROBERT LEE DINKINS

"Though he was rough, he was kindly." Basketball 1,2,3,4; Football 2,3; Baseball 2,3,4; Junior Play; Club Officer 2,3; Monogram Club 2,3,4; FFA Club 1,2,3; 4-H Club 1; Annual Staff; Superlative.



THOMAS HAROLD DINKINS

"A jest loses its point when the jester laughs himself." School Bus Driver 3,4; Lunchroom Worker 3; Glee Club 1; FFA Club 1,2,3,4; Superlative.



WILLIAM ROBERT DULL

"The ripest peach is highest on the tree." School Bus Driver 4; Club Officer 4; FFA Club 1,2,3,4; Annual Staff; Superlative.



FERNE WAYE HARRISON

"Where the stream runneth smoothest, the water is deepest." Library Staff 2,3; Office Staff 2,4; Lunchroom Worker 1; Class Officer 2,3; Junior Play; Club Officer 3,4; Glee Club 1,2,4; Monogram Club 2,3,4; Superlative.



HELEN LOUISE HAWKS

"A just fortune awaits the deserving." Office Staff 4; Lunchroom Worker 3; Superlative.



JANET MARLENE HAYNES

"Love, hope, fear, faith, these make humanity. These are its sign and nature and character." Lunchroom Worker 1; Class Officer 2,3,4; Basketball 2,3,4; Basketball Co-Captain 4; Dramatics Club 2,3,4; Dramatics Club Play 3; 4-H Club 1,2,3,4; Club Officer 4; Glee Club 2,3,4; Annual Staff; Superlative; Queen's Attendant 3; Homecoming Queen 4.

SENIORS

BOBBY EUGENE HOLCOMB

"Better be courted and jilted, than never be courted at all." Class Officer 2,3,4; Basketball 1,2,3,4; Co-Captain 2,3,4; Football 2; Baseball 1,2,3,4; Junior Play; Club Officer 3,4; Glee Club 1,2,3,4; Monogram Club 2,3,4; FFA Club 1,2,3; Dramatics Club 4; Annual Staff; Superlative.

BETTY LOU HUTCHENS

"Trifles make perfection, and perfection is no trifle." Office Staff 4; Class Officer 1; Cheerleader 4; Club Officer 2,4; Glee Club 2,3,4; FHA Club 2,3; Beta Club 4; Junior Marshal; 4-H Club 1,2,3,4. Monogram Club.

MARY JUANITA HUTCHENS

"One only hope my heart can cheer, the hope to meet again." Office Staff 4; Lunchroom Worker 3; Glee Club 3; Press Club 4; FHA Club 2.

ALICE JEAN HUTCHINS

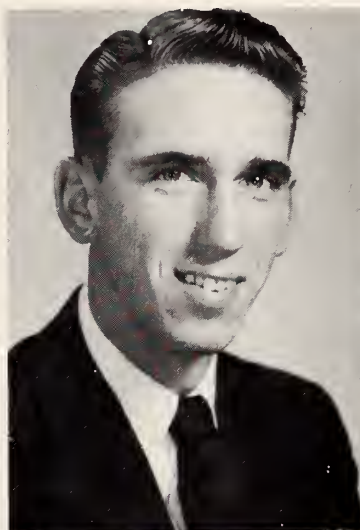
"Where did you get your eyes so blue? Out of the sky as I came through." Office Staff 4; Basketball 3,4; Basketball Co-Captain 4; Press Club 4; Monogram Club 3,4; FHA Club 1,2,3,4; 4-H Club 1; OAK LEAF Staff 4; Superlative; Quill and Scroll 4.

PATTY ANN LONG

"Great is journalism. Is not every able editor a ruler of the world." OAK LEAF Staff 3,4; Associate Editor 3; Editor-in-Chief 4; Lunch-Room Worker 1; Class Officer 2,3; Cheerleader 1,2,3,4; Chief 4; Glee Club 2,3,4; Press Club 1,2,3,4; Monogram Club 2,3,4; Beta Club; Annual Staff; Superlative; Junior Marshal; Quill and Scroll 4.

LONNIE GRAY McCOLLUM

"Get your facts first, and then you can distort them as much as you please." Activity Bus Driver 4; Baseball 1,2,3; Monogram Club 2,3,4; FFA Club 1,2,3,4; 4-H Club 4.



SENIORS



LOIS HENRIETTA MULLIS

"My eyes make pictures, when they are shut."
Lunchroom Worker 1,2,3; FHA Club 2,3.



ETHEL MARIE MYERS

"The tree of knowledge is not that of life."
Library Staff 3; Office Staff 4; OAK LEAF Staff 4; Class Officer 3; Cheerleader 4; Club Officer 4; Glee Club 4; Monogram Club 4; FHA Club 2,3; Beta Club; 4-H Club 4; Superlative; Quill and Scroll 4.



LOCKSLEY HAROLD NANCE

"How poor are they who have not patience.
What wound did ever heal but by degrees."
Lunchroom Worker 3; Class Officer 1,2,3; FFA Club 1,2,3,4; 4-H Club 4.



BETTYE HUDSPETH PAYNE

"A soul as white as Heaven." Office Staff 4;
Lunchroom Worker 3; Class Officer 2; Glee Club 2,3,4.



ALMA JEAN PENDRY

"O this learning, what a thing it is." Lunchroom Worker 1,3; Glee Club 3; FHA Club 2,3.



WILLIAM EDGAR REAVIS

"I will sit down now, but the time will come when you will hear me." School Bus Driver 3, 4; Lunchroom Worker 3; Baseball Manager 1; Glee Club 1,2,3; 4-H Club 1,2,3; Superlative.

SENIORS

JOHNNY MANLY REECE

"I have been dying for twelve years, now I am going to live." Class Officer 3; Club Officer 4; Junior Play; Glee Club 1; Dramatics Club 3,4; 4-H Club 1; Annual Staff, Business Manager; Superlative.

BETTY LOU RIGGANS

"What a miserable world! Trouble if we love and trouble if we do not love." Lunchroom Worker 4; Class Officer 3; FHA Club 1,2,3; Dramatics Club 4; 4-H Club 2; Superlative.

ROBERT GREENE SHORE

"Three-fifths of him genius and two-fifths sheer fudge." Library Staff 4; Class Officer 4; Basketball 2,3,4; Football 2,3,4; Football Tri-Captain 4; Baseball 4; Junior Play; Club Officer 2,4; Glee Club 2,4; Monogram Club 2,3,4; Dramatics Club 4; Beta Club; Annual Staff, Editor-in-Chief; Superlative; Quill and Scroll 4.

MARY NELL SPILLMAN

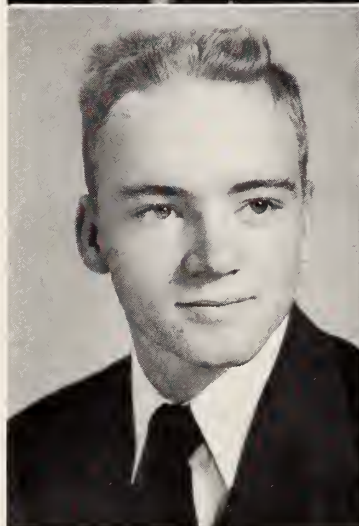
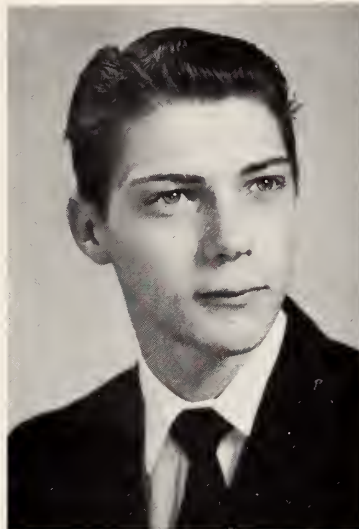
"Patience is a necessary ingredient of genius." Library Staff 2; Office Staff 4; Class Officer 2,4; Junior Play; Club Officer 1,3,4; Glee Club 3,4; FHA Club 2,3; Beta Club; 4-H Club 1,2,3,4; Annual Staff, Associate Editor; Junior Marshal; Quill and Scroll.

NORA SPILLMAN

"Brother, brother; we are both in the wrong." Class Officer 2; Glee Club 3; FHA Club 2,3,4; 4-H Club 1,2,3,4; Superlative.

RUBY MARIE TAYLOR

"I am not at that feather to shake off my friend when he must need me." Library Staff 3; Office Staff 4; OAK LEAF Staff 4; Cheerleader 4; Club Officer 4; Glee Club 2,3,4; Press Club 4; Monogram Club 4; FHA Club 2,3; Dramatics Club 3; Beta Club 4-H Club 2,3; Junior Marshal; Quill and Scroll 4.



SENIORS



LOWELL AVERY TODD

"I am well aware that I am the 'umblest person going, let the other be where be may." Lunchroom Worker 3; Class Officer 2; FFA Club 1, 2, 3, 4; Superlative.



SHIRLEY GREY TODD

"If I am not worth the wooing, I surely am not worth the winning." Class Officer 2, 3, 4; Junior Play; Glee Club 1, 2, 3, 4; Dramatics Club 2, 3, 4; Club Officer 4; FHA Club 2, 3, 4; Annual Staff; Superlative; Junior Marshal; Beta Club.



LEO HUNT VESTAL, JR.

"Much learning doth make thee mad." School Bus Driver 3, 4; Junior Play; FFA Club 1, 2, 3, 4.



WILLIAM DOUD WHITAKER

"Anger and jealousy can no more bear to lose sight of their objects than love." School Bus Driver 2, 3, 4; FFA Club 1, 2, 3, 4; Dramatics Club 3, 4.



SANFORD WINFIELD WILLARD

"A merry heart doeth good like a medicine." School Bus Driver 4; Lunchroom Worker 1, 2, 3; Basketball 2, 3, 4; Football 2, 3, 4; Baseball 2, 3, 4; Club Officer 3; Glee Club 1, 2, 3, 4; Monogram Club 2, 3, 4; FFA Club 1, 2, 3, 4; 4-H Club 1, 2, 3, 4; Annual Staff; Superlative.



KATHRYN LUCILLE WILLIAMS

"True love is better than glory." OAK LEAF Staff 4; Class Officer 2; Cheerleader 3, 4; Junior Play; Club Officer 3; Glee Club 2, 3, 4; Press Club 2, 4; Monogram Club 3, 4; FHA Club 2, 3; Dramatics Club 3; 4-H Club 3; Superlative; Quill and Scroll 4.

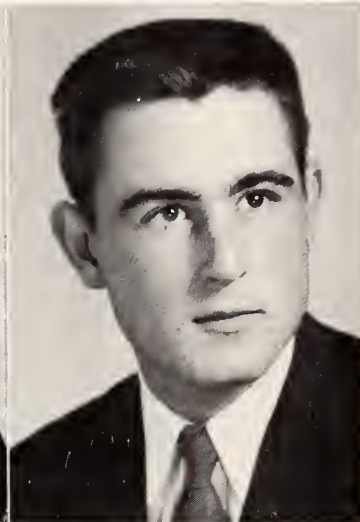
SENIORS

ROSA BEATRICE WILLIAMS

"Kindness is wisdom. There is none in life but needs it and may learn." Class Officer 3; Glee Club 2,3,4; FHA Club 2,3; 4-H Club 4; Superlative.

FLOYD ALLEN WILMOTH

"How sweet the words of truth, breathed from the lips of love." Activity Bus Driver 3; Basketball 2,3; Football 2,3,4; Tri-Captain 4; Baseball 2,3,4; Glee Club 4; Monogram Club 2,3,4; FFA Club 3,4; Superlative.

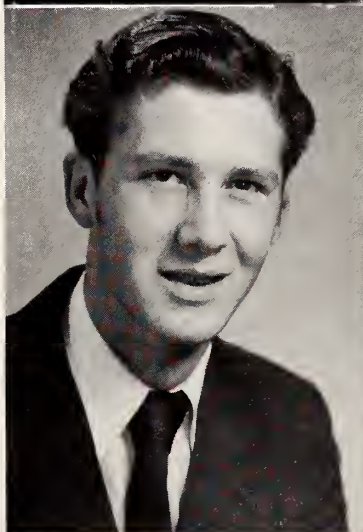


CHESTER LEWIS WOOTEN

"Never leave that till tomorrow which you can do today." Lunchroom Worker 3; Class Officer 1; Glee Club 1,2,3,4; FFA Club 1,2,3,4; 4-H Club 1,2,3,4.

JOAN ELIZABETH WOOTEN

"She's all my fancy painted her, she's lovely, she's divine." Lunchroom Worker 1,2,3; Glee Club 3,4; FHA Club 3,4; 4-H Club 3,4; Superlative.



MARGARET BETTY WOOTEN

"Who can direct, when all pretend to know?" Glee Club 3; FHA Club 3; Press Club 4; OAK LEAF Staff 4.



CLASS POEM

"Adieu"
By Nell Spillman

We, the graduating class
With joyous, happy heart
Have watched the days all pass
Now we must all depart.

Our joys here have been many
Our sorrows but a few
It's very hard for any
To have to say adieu.

Our task here now is ended
We have had success thus far
Fond thoughts of those befriended
Will be our guiding star.

But when all have said good-bye
And gone their chosen way
We'll remember Yadkinville High
And Graduation Day.

CLASS FLOWER

Red Rose

CLASS COLORS

Navy Blue and White

CLASS MOTTO

As You Think, You Are

CLASS HISTORY

With bewildered looks and gruesome smiles, sixty-nine green freshmen started in 1949 on the long road toward graduation. The boys and girls were divided, and Miss Arlene Williams and Mr. Burton Linville were the sponsors. Thirteen students from Forbush joined us, and we elected Barbara Ann Cornelius and Chester Wooten as our presidents. Five of our boys were on the basketball team which won in the finals of the Twenty-fourth Annual Journal-Sentinel Tournament. The girls presented as their chapel program a manless wedding.

In our sophomore year, we were again divided. Mrs. R. P. Buchanan and Miss Alice Dixon were our sponsors. At the end of this year Miss Dixon retired after many years of faithful service. The high lights of the year were the parties and square dances, and a trip to the mountains. Through many difficulties and lost sleep, we finally climbed the ladder one more notch and were jolly juniors.

This truly was a busy year for most of us, while Mrs. Ned Hood and Mr. John Mathis toughed it out as our homeroom teachers. Our big project was the annual Junior-Senior Banquet, which we had in the gymnasium. To raise money, we presented "Professor, How Could You!" as our play, had cake sales, sold magazine subscriptions, and served the Lions Club. Then came graduation time for the seniors. We picked daisies and made the traditional daisy chain for class night.

In September, 1952, forty-four sophisticated seniors started their last climb toward graduation. Four members of the class dropped out by the middle of the year and one transferred from Bethany High School. During the four years, we lost through matrimony, transfers, and jobs thirty-one pupils. Several students from other schools transferred to our class. Mrs. Ned Hood and Mr. Max Welborn were senior sponsors. Not long after the beginning of school, Robert Shore was elected president of the senior class and assumed his duties as editor-in-chief of the annual. Soon after our rings came, we selected our mascots, caps and gowns, invitations, and calling cards. It was not long before the banquet rolled around and then it was time for the wonderful trip to Washington. Next came the senior play, class night, a picnic for the juniors, and graduation. Having attained our goal thus far, we are now ready to face the world.

Kathryn Williams
Jean Hutchins
Historians

MACKIE'S JEWELRY STORE
Diamonds - Watches - Jewelry
Phone 3311 - Yadkinville, North Carolina

S
E
N
I
O
R



MOST LIKELY TO SUCCEED

Johnny Reece
Scottie Sue Adams

BEST PERSONALITY

Patty Long
Bobby Holcomb

S
U
P
E
R
L
A
T
I
V
E
S



MOST DEPENDABLE

Bruce Davis
Ferne Harrison

MOST CO-OPERATIVE

Edgar Reavis
Beatrice Williams

S
E
N
I
O
R



BEST SPORT

Lowell Todd
Jo Ann Atwood



CUTEST

Bill Dull
Joan Wooten



MOST POPULAR

Floyd Wilmoth
Kathryn Williams



FRIENDLIEST

Betty Lou Riggins
Lonnie Gray McCollum

S
U
P
E
R
L
A
T
I
V
E
S

S
E
N
I
O
R



BEST ALL-ROUND

Ethel Myers
Sanford Willard

MOST MISCHIEVOUS

Walser Bates
Barbara Ann Cornelius

S
U
P
E
R
L
A
T
I
V
E
S



QUIETEST

Harold Nance
Louise Hawks



MOST INTELLECTUAL

Nell Spillman
Robert Shore

S
E
N
I
O
R



PRETTIEST
Janet Haynes

BEST LOOKING
Delano Dinkins

NEATEST
Harold Dinkins
Nora Spillman



MOST COURTEOUS

Shirley Todd
Billy Whitaker



MOST ATHLETIC

Bobby Dinkins
Jean Hutchins

S
U
P
E
R
L
A
T
I
V
E
S

LAST WILL AND TESTAMENT

We, the Senior Class of Nineteen Hundred Fifty-three of Yadkinville High School, in Yadkin County, the State of North Carolina, being of sound mind and memory, and realizing our impending departure from this school, do hereby declare and make this, our last will and testament.

Article I

To Mr. R.P. Buchanan, our principal, we bequeath our affection and appreciation for his interest and the guidance that he has so willingly given us.

Article II

To Mrs. R.P. Buchanan, we leave our love and appreciation for her help in publishing our yearbook, THE YADKINIAN.

Article III

To the faculty, we will and bequeath our gratitude for their patience and understanding.

Article IV

Jointly we leave the following, since we do not need them next year.

First:

To the freshmen, we leave our water guns, rubber bands, and other childish implements of pleasure.

Second:

To the sophomores, we leave our sense of humor, our sense of honor, and common sense.

Third:

To the juniors we leave Room 4 in the high school section of the building, the so-called privileges we never had, the privilege of editing the 1953-'54 edition of THE YADKINIAN, and our dignity and duties.

Article V

Individually, to the Junior Class, we leave the following:

Scottie Sue Adams wills her pretty black hair to Libby Smith. Jo Ann Atwood wills her bashful ways to Adelaide Hinshaw. Barbara Ann Cornelius wills her corny jokes to Anne Brown. Ferne Harrison wills her ability to work to J. D. Welborn. Louise Hawks wills her quietness to Peggy Howell. Bettye Hudspeth Payne wills her ability to get married to Almeta Willard. Betty Hutchens wills her sweet disposition to Faye Stinson. Jean Hutchins leaves her blonde hair to Janie Slater. Janet Haynes wills her basketball ability to Lucille Bates. Margaret Wooten wills her grown-up ways to Betty Redding. Nell Spillman wills her height to Frances Harding. Ruby Taylor wills her fearfulness of boys to Alma Slater. Beatrice Williams wills her ability to play the piano to Dean Prim. Kathryn Williams wills her popularity to Betty Lou Walker. Juanita Hutchens leaves her ability to write well to J.W. Pardue. Patty Long wills her cheerleading ability to Laura Leigh Sizemore. Ethel Marie Myers wills her ability to type to James Calloway. Alma Jean Pendry wills her ability to laugh at nothing to Joan Groce. Betty Lou Riggins wills her beautiful voice to Reta Peoples. Nora Spillman leaves her ability to giggle to Edna Hutchens. Shirley Todd leaves her ability to stay single to Mary Faye Wyatt. Joan Wooten wills her cuteness to Jo Ann Hutchens. Lois Mullis wills her bobbie pins to Georgia Ann Cashion. Robert Shore leaves his position on the Annual Staff to Lovena Hobson. Walser Bates leaves his unstudied lessons to Ouida Brown. Bruce Davis wills his good grades to Gerry Hutchins. Bobby Dinkins wills his brains to all the members of the Beta Club. Delano Dinkins wills his good looks to L.L. Mason. Harold Dinkins wills his cute remarks to Mattie Cranfill. Bill Dull wills his dependability to Jimmy Vestal. Lonnie McCollum wills his friendliness to Kent Cranfill. Harold Nance wills his innocent look to Mary Ann Royal. Edgar Reavis wills his ability to flirt to Gilly Ann Wagoner. Lowell Todd wills his sincerity to Thurmond Phillips. L.H. Vestal wills his everlasting patience to Barbara Howell. Billy Whitaker wills his neatness to James Hutchens. Floyd Wilmoth wills his ability to brag to Donald Carter. Sanford Willard leaves his curly hair to Jimmy Martin. Chester Wooten wills his cigarettes to Joe Taylor and Robert Williams. Bobby Holcomb wills his basketball ability to Verne Harrison. Johnny Reece wills his love for school to James Dobbins.

Article VI

We hereby appoint Mr. R.P. Buchanan as sole executor of this, our last will and testament.

In witness whereof, we the Senior Class of 1953, do set our hand and seal on this the thirtieth day of May in the year of our Lord, one thousand nine hundred and fifty-three.

TESTATORS

Ruby Taylor

Betty Lou Riggins

CLASS PROPHECY

As we gaze into the mirror of Alice in Wonderland, we see the seniors ten years from now.

"Take a letter, please," Beatrice Williams -- secretary in the Wachovia Bank in Winston-Salem.

Johnny Reece is doing quite well for himself in a grocery store in Mooresville.

Potty Long, editor-in-chief of our school newspaper, is now a reporter in Washington, D.C.

Yes, Shirley Todd has made big progress as a stenographer in an office in Washington, D.C.

Bettye Hudspeth Payne won the most blue ribbons at the fair this year. She must be a wonderful housekeeper for Clyde.

Bill Dull and Harold Dinkins are two of the most successful farmers of our day. What they learned in F.F.A. must have been valuable.

April's issue of CHARM really disappeared from the newsstand, but no wonder! Our own Janet Haynes' face smiled prettily from the cover. She is a model.

Scottie Adams is now librarian in one of the city schools. She is very efficient and keeps every book in its proper place.

If you have been reading the newspapers, you know that one of the top scientists of the day is none other than Nell Spillman.

It is said that she can split an atom to the Nth degree.

Nora Spillman has just been elected president of the North Carolina Society of Cosmetologists. She specializes in permanent waves and facials.

Robert Shore attended Carolina and liked it so well that he is now on the faculty there.

The former Fern Harrison is the bride of the new Methodist minister. She always was a wonderful person.

Jean Hutchins made the headlines on the sports page when the Boston Red Sox won the pennant. You know she is manager of the team.

Lower the gang plank, folks. Here comes our own Chester Wooten, who is now in the United States Marines.

In Hollywood, Betty Hutchens has become famous as an artist.

If any of you go visiting to Myrtle Beach, don't forget to drop in and see Kathryn Williams and Ruby Taylor. We heard that they have a whole fleet of yachts.

While riding through Boonville, we saw one of the most modern brick houses in the state where the former Joan Wooten, her husband, and their twins live.

Edgar Reavis now has a very big garage in Yadkinville. We hear that he keeps that Reavis sign in front shined so that it can be easily read.

After ten years we find that Coach Bridgewater is getting ready to retire and Bobby Holcomb is taking his place.

Juanita Hutchens, we find, is still working as a stenographer at Western Electric.

In Texas, Lois Mullis is training horses on a ranch.

If any of you want to know the weather forecast, just get in touch with Sanford Willard who is the weatherman at the Smith Reynolds Airport in Winston-Salem.

Floyd Wilmoth is now teacher of the fifth grade at dear old Yodkinville School.

Lonnie Gray McCollum is doing quite well for himself in his hardware store in Climax.

L.H. Vestal is now manager of the Western Auto Store in Yadkinville. He can hardly keep enough parts for the hot rods the boys are driving around.

Lowell Todd is the fellow to call when you need to have the sink unstopped. We understand he is a first-rate plumber.

Extra! Extra! Extra! Read all about it! Up-to-the-minute interesting news written by none other than Margaret Wooten, news reporter for the New York Times.

Barbara Ann Cornelius is now a famous comedian. She has her own TV show.

Bruce Davis is living in New York where he has become a successful businessman.

Walser Bates is master of ceremonies on a radio show. We remember his jokes that entertained everyone.

Ethel Myers and Louise Hawks are doing quite well as nurses in City Hospital in Winston-Salem.

After finishing high school, Jo Ann Atwood finally found time to date steady and now has a husband and a home near Center.

Everyone knew Alma Jean Pendry's greatest desire after finishing high school was to take a rest. After ten years we find that she is married, but she is still resting; her husband does all the work.

Of course all the 1953 seniors are attending the stock car races now, because one of their classmates, Bobby Dinkins, has won fame as a stock car driver.

We are all waiting for the new movie, "The Girl He Couldn't Get," because in it is our own Delano Dinkins, co-starring with Jane Russell.

We found it difficult to find Harold Nance, because he is living a very quiet life in a secluded spot.

Betty Lou Riggins is now married, and is the mother of the six children she has always wanted.

After ten years we find that Bill Whitaker owns one of the biggest dairies in the state.

PROPHETS

Beatrice Williams

Margaret Wooten

SENIOR BABY PICTURES



1. Nell, 2. Walser, 3. Kathryn, 4. Patty, 5. Lowell, 6. Barbara Ann, 7. Beatrice, 8. Shirley, 9. Lois, 10. Scottie Sue, 11. Johnny, 12. Betty Lou, 13. Bill, 14. Feme, 15. Ruby, 16. Sanford, 17. Juanita, 18. Ethel, 19. Billy, 20. Louise, 21. Margaret, 22. Alma Jean, 23. Bettye, 24. Jean.

Juniors



JUNIORS

JUNIOR HOMEROOM OFFICERS



Jimmy Martin.....Treasurer
 Libby Smith.....Secretary
 Georgia Ann Cashion.....President
 Anne Brown (not shown).....Vice-President

Adelaide Hinshaw.....Treasurer
 James Dobbins.....Vice-President
 Reta Peoples.....President
 Nellie Holcomb.....Reporter
 Robert Williams.....Secretary

C
L
A
S
S



O
F
F
I
C
E
R
S

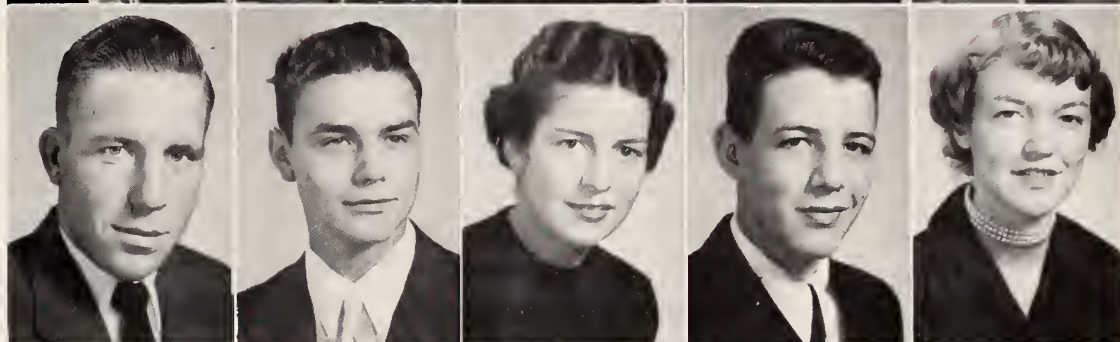
Nellie Holcomb, Vice-President; Ouida Brown, Treasurer, Jimmy Martin, President; Libby Smith, Secretary; Velna Hall, Reporter.

YADKIN PHARMACY
 Prescription Headquarters for Yadkin County
 Phone 4531 - J.E. Knight - Yadkinville, North Carolina

Hugh Adams
Lucille Bates
Anne Brown
Ouida Brown
Ranzie Brown



James Calloway
Donald Carter
Georgia Ann Cashion
Kent Cranfill
Mattie Cranfill



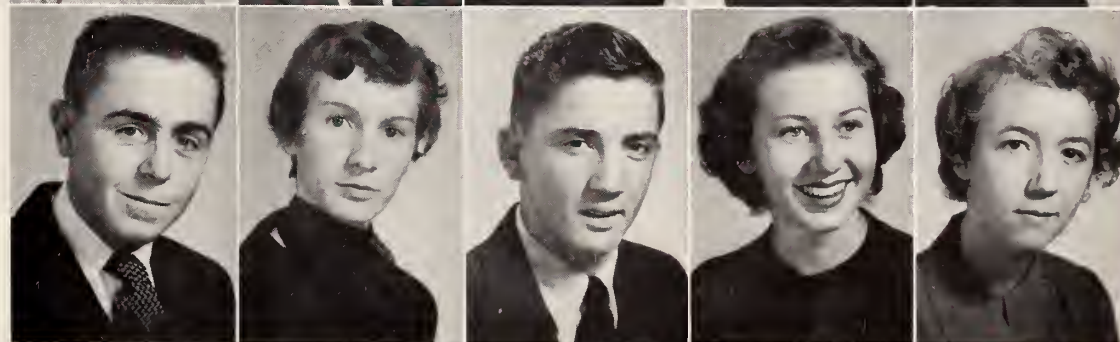
James Dobbins
Joan Groce
Velna Hall
Frances Harding
Verne Harrison



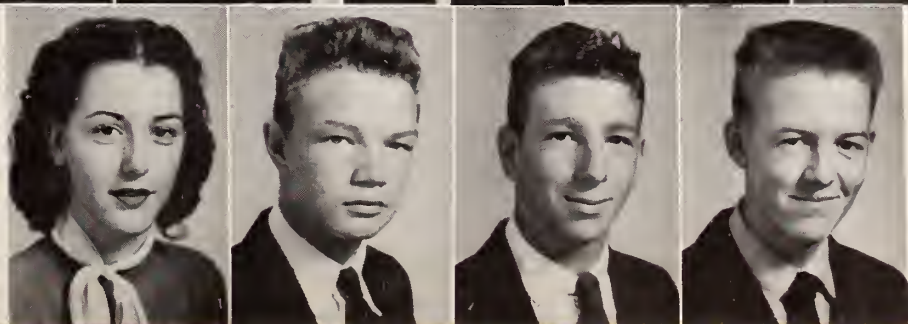
Adelaide Hinshaw
Jimmy Hobson
Lovena Hobson
Nellie Holcomb
Barbara Howell



Keith Howell
Peggy Howell
Billy Hutchens
Edna Hutchens
Jo Anne Hutchens

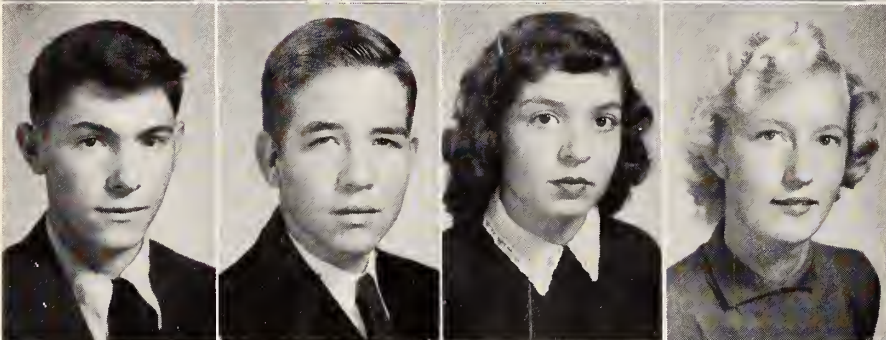


Gerry Hutchins
James Hutchins
Jimmy Martin
L. L. Mason





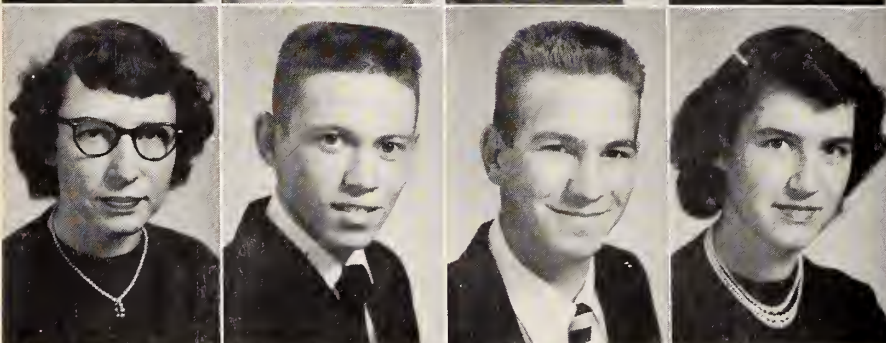
Barbara Ann Norman
J.W. Pardue
Annawee Pendergrass
Reta Peoples



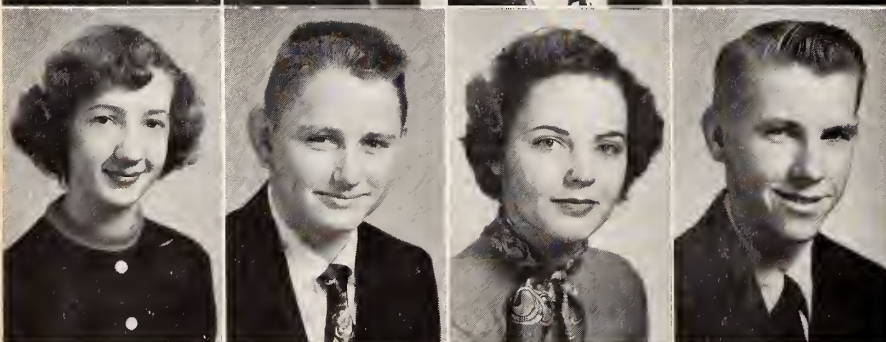
Thurmond Phillips
Dean Prim
Betty Redding
Mary Ann Royal



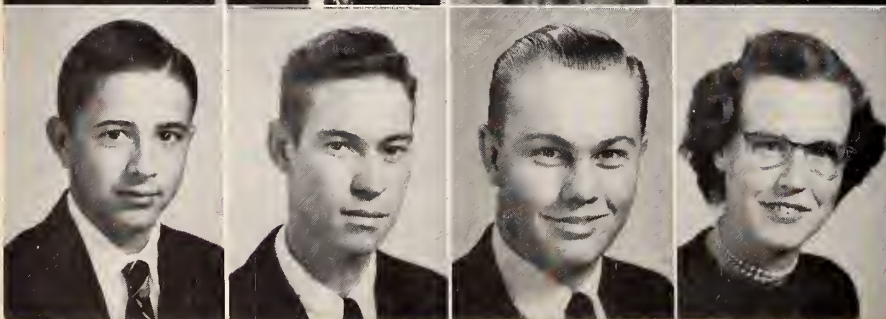
Laura Leigh Sizemore
Alma Slater
Janie Slater
Libby Smith



Faye Stinson
Joe Taylor
Jimmy Vestal
Gilly Ann Wagoner



Betty Lou Walker
J.D. Welborn, Jr.
Almeta Willard
Bill Williams



James Williams
Robert Williams
Franklin Wooten
Mary Faye Wyatt

Sophomores



SOPHOMORES



Left to right: Robert Buchanan, Vice-President; David Wright, Reporter; Shirley Myers, President; Jane Hobson, Secretary; Jean Holcomb, Treasurer.

Left to right: Marlene Sprinkle, Secretary; Lois Holcomb, Vice-President; J.E. Southard, President; Charles Bryant, Reporter; George Helton, Treasurer.

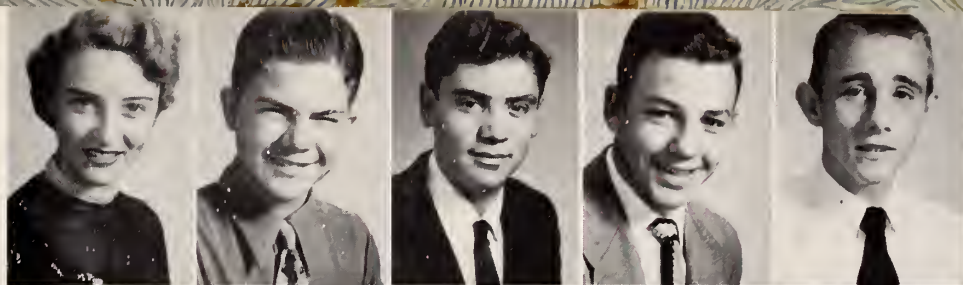


Jean Carol Adams
Charles Bryant
Robert Buchanan
Betty Jo Calloway
Clarence Carlton

Athelene Cheek
Joe Choplin
Ray Church
Betty Collins
D.C. Cornelius

Athalee Dinkins
Bonnie Dinkins
Harold Dixon
Atha Dull
Opal Goss
Patty Gregory

Shelvie Gregory
 Clarence Groce
 Edwin Groce
 Ray Hayes
 George Helton



Jane Hobson
 Sonny Hobson
 Jean Holcomb
 Lois Holcomb
 Thelma Hutchens



Shelby Kimmer
 Margaret Logan
 Betty Jo Martin
 Jane Mason
 Clifford McCollum



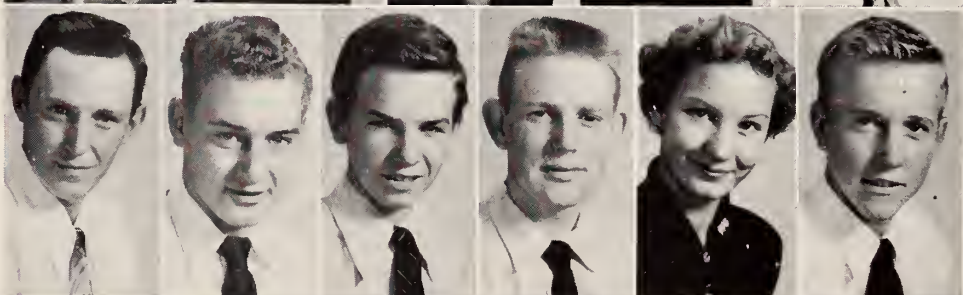
Peggy Miller
 Mayo Moxley
 Shirley Myers
 Lloyd Nance
 Patty Nance



Gale Phillips
 Helen Reynolds
 Betty June Salmons
 Ada Pearl Sheek
 Homer Shelton



Jimmy Sizemore
 Junior Sizemore
 Henry Slater
 J.E. Southard
 Marlene Sprinkle
 Jimmy Taylor



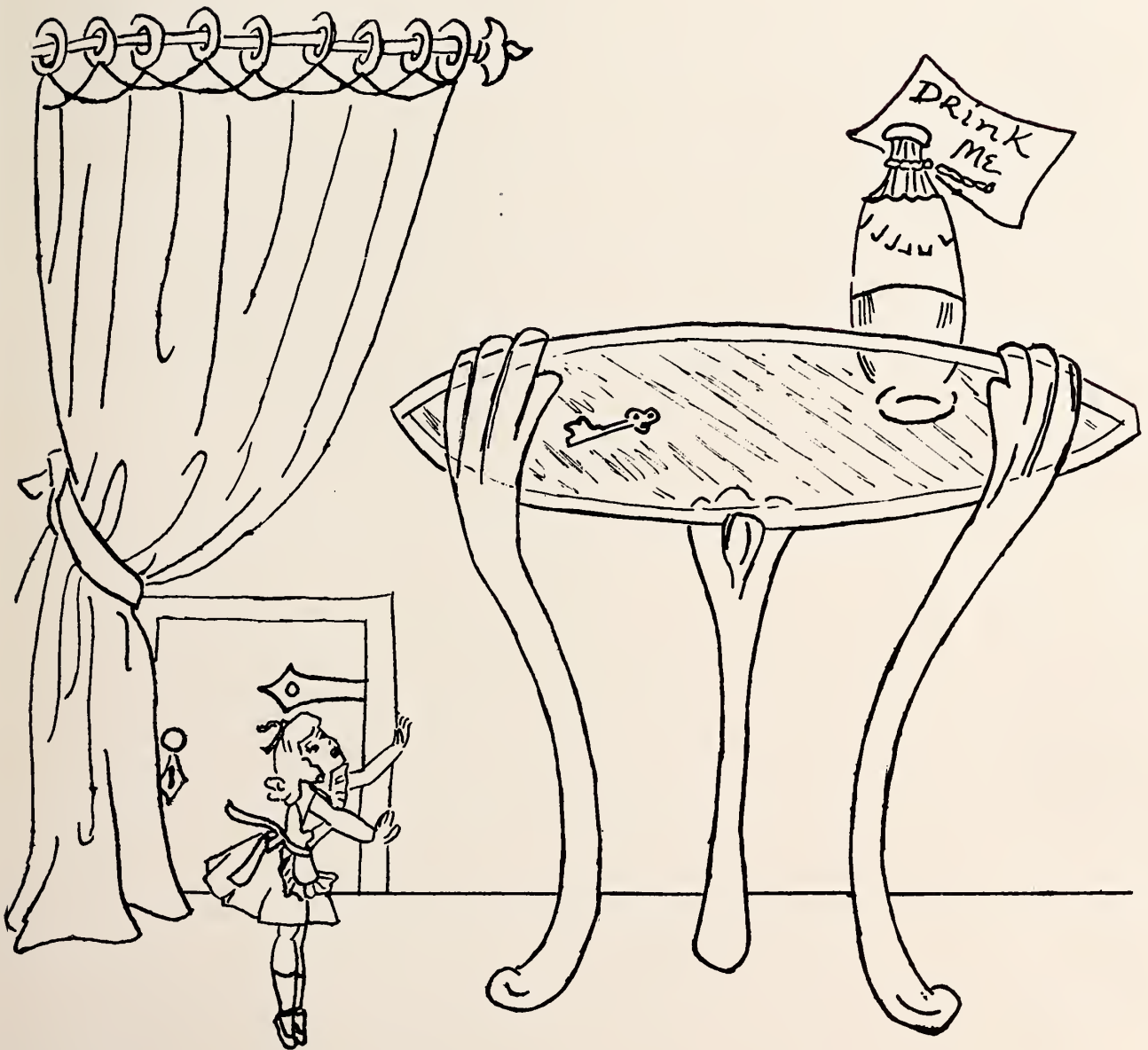
Velma Trivette
 Harley Wall
 Peggy White
 Jimmy Williams
 Faye Wooten
 David Wright



SNAPSHOTS



Freshmen



FRESHMAN OFFICERS



Della Slater, Secretary; Betty Vestal, Reporter;
Mary Lou Casstevens, Treasurer; Phillip Graham,
Vice-President; Georgia Todd, President (seated).



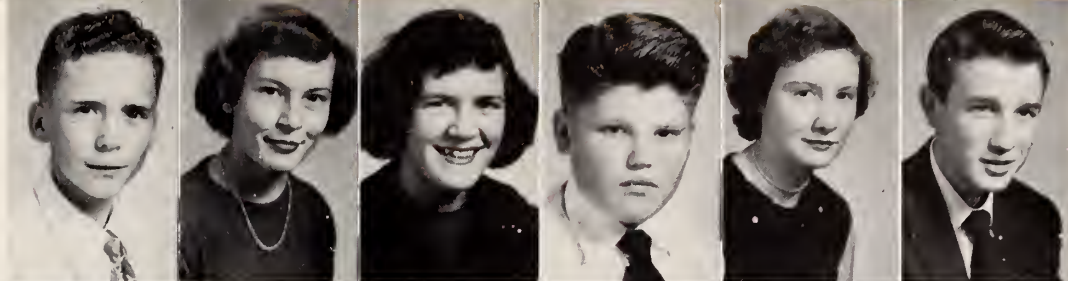
Lorene Williams, President; Homer McBride, Reporter;
Harold Brown, Vice-President; Roberta Smith, Sec-
retary; Roger Hutchens, Treasurer(not shown).



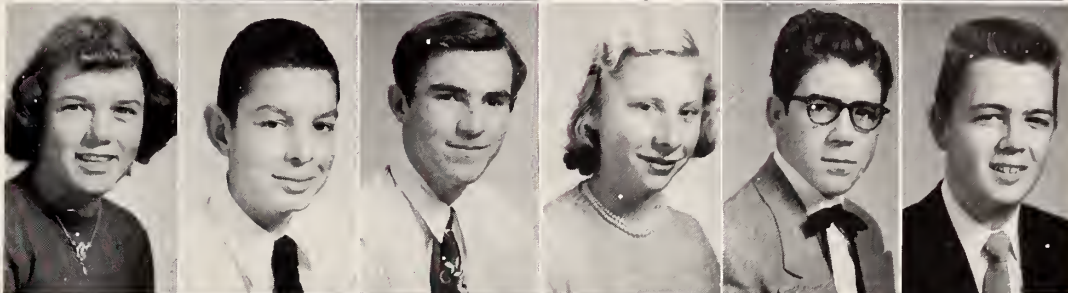
Dorothy Bolin
Bill Brandon
Laline Brandon
Albert Brown
Harold Brown
Charles Bryant

Jerrie Carlton
Mary Lou Casstevens
Gilbert Church
Allen Cornelius
Max Cranfill
Marjorie Daye
William Daye

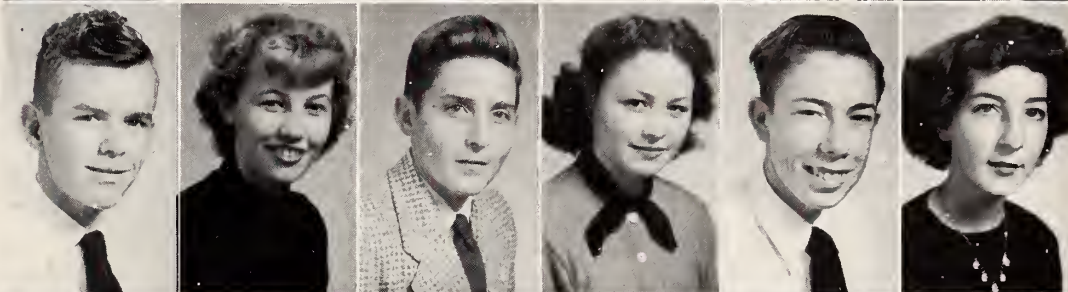
Charles Ray Dinkins
 Blanche Dobbins
 Barbara Dowell
 Phillip Graham
 Myrtle Harris
 Buddie Hayes



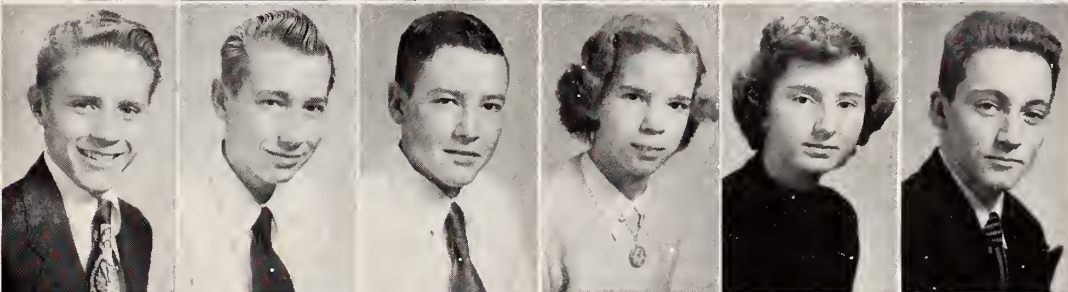
Helen Hayes
 Lee Hinshaw
 David Hobson
 Ola Mae Hutchens
 Donald Johnson
 Harold Long



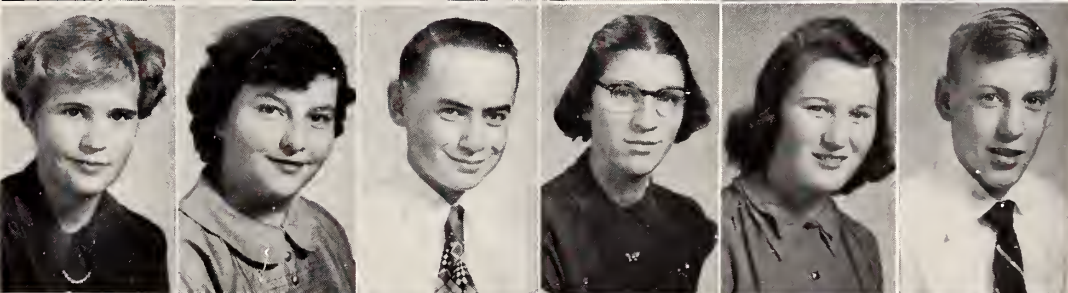
Homer McBride
 Ruby Murphy
 Jimmy North
 Faye Peele
 Donald Ray Rachels
 Mary Elizabeth Reynolds



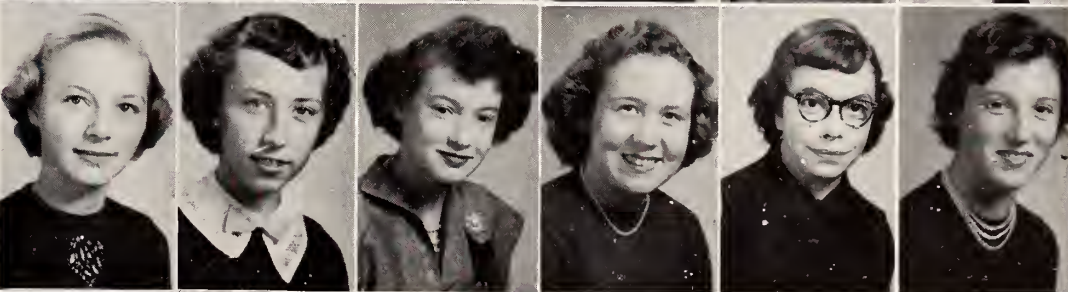
J. D. Riggans
 Donald Royal
 H. B. Salmons
 Margaret Salmons
 Mozelle Shelton
 Carl Shore, Jr.



Ruth Shore
 Peggy Sizemore
 Tommy Sizemore
 Alice Slater
 Della Slater
 Odell Smith



Roberta Smith
 Shirley Smith
 Dorothy Stallings
 Georgia Todd
 Barbara Dean Vestal
 Betty Vestal



Gertrude Wall
 Anne Whitaker
 Nell Whitaker
 Lorene Williams
 Shelby Williams
 John Douglas Wooten



A dense collage of black and white photographs from the mid-20th century. The images are of various sizes and are arranged in an overlapping, non-linear fashion. The subjects are primarily young people, likely students, in various social settings. Some photos show couples, some show groups of friends, and others are individual portraits. The clothing is typical of the 1940s and 1950s, including dresses, skirts, blouses, and overalls. The backgrounds range from outdoor grassy areas and trees to indoor settings and brick buildings. The overall tone is nostalgic and captures candid moments of youth.

Activities





BETA CLUB

President
Nell Spillman

Vice-President
Robert Share

Secretary
Patty Lang

Treasurer
Ethel Myers

Reporter
Anne Brawn

First row: Miss Beverly Maare, Patty Lang, Shirley Tadd, Nell Spillman, Anne Brawn, Velna Hall, Ruby Taylor.
Second row: Almeta Willard, Mattie Sue Cranfill, Nellie Holcomb, Libby Smith, Frances Harding, Reta Peaples,
Ouida Brawn. Third row: Betty Hutchens, Ethel Marie Myers, Donald Carter, Robert Shore.



PRESS CLUB

President
Jimmy Williams

Vice-President
Libby Smith

Secretary
Reta Peoples

Treasurer
Billy Brandon

Reporter
Ruby Taylor



In front: Dorothy Stalling, Blanche Dobbins. Back row: Max Cranfill, Jimmy Williams, Billy Brandon, Jimmy North, Barbara Ann Norman, David Wright, Mary Faye Wyatt, Juanita Hutchens, and Myrtle Harris.





FIRST AID GIRLS

Edna Hutchens, Nellie Holcomb,
Mary Faye Wyatt, Barbara Ann
Norman, Betty Jo Martin, Jean
Carol Adams, Shelby Kimmer.

GLEE CLUB

First Row: Miss Mary Harding, Nell Spillman, Nell Whitaker, Roberta Smith, Margaret Logan, Shelby Kimmer, Joan Groce, Shirley Todd, Lois Holcombe, Peggy Howell, Betty Redding, Jimmy Martin, Donald Johnson, George Helton, Almata Willard, Georgia Todd. Second Row: Lorene Williams, Jean Holcombe, Jerry Carlton, Shelby Williams, Shirley Smith, Betty Martin, Edna Hutchens, Marlene Sprinkle, Jean Carol Adams, Nellie Holcombe, Bettye Payne, Anne Brown, David Wright, Robert Buchanan, Robert Shore. Third Row: Scottie Sue Adams, Barbara Cornelius, Janet Haynes, Betty Vestal, Mary Lou Castevens, Mattie Cranfill, Gertrude Wall, Mayo Moxley, Georgia Ann Cashion, Adelaide Hinshaw, Velna Hall, Lee Hinshaw, Harold Long. Fourth Row: Betty Hutchens, Ruby Taylor, Ouida Brown, Libby Smith, Max Cranfill, Charles Bryant, Frances Harding, Jimmy Williams, Patty Long, Faye Stinson, Anne Whitaker, Lovena Hobson. Fifth Row: Ethel Myers, Kathryn Williams, Reta Peoples, Delano Dinkins, J.E. Southard, Bobby Holcombe, Kent Cranfill, Ray Hayes, J.D. Welborn. Sixth Row: Veme Harrison, Sanford Willard, Chester Wooten, Dean Prim, Ada Pearl Sheek, Shirley Myers, Ferne Harrison. Insets: Mrs. L. C. Richardson, Mrs. J. L. McKnight.



LIBRARY STAFF



Seated: Velna Hall, Betty Lou Walker, Jean Holcomb, Velma Trivette, Jean Carol Adams. Standing: Scottie Adams, Robert Shore, Mary Ann Royal, Shelby Kimmer, Miss Mary Harding, Ada Pearl Sheek.

OAK LEAF STAFF

Front row: Lee Hinshaw, Sports Editor; Kathryn Williams, Chief Reporter; D. C. Cornelius, Circulation Manager; Gale Phillips, Art Editor. Back row: Ruby Taylor, Chief Typist; Robert Buchanan, Business Manager; Libby Smith, Feature Editor; Reta Peoples, Fashions Editor; Ouida Brown, Associate Editor; Ethel Myers, Sports Editor; Margaret Wooten, Exchange Editor. Standing: Patty Long, Editor-in-Chief; Jean Hutchins, Desk Editor.





DRAMATICS CLUB

President
Shirley Todd

Vice-President
Barbara Cornelius

Secretary
Scottie Adams

Treasurer
Johnny Reece



Seated on chair: Ray Hayes, Anne Brown, Shirley Myers. Seated on divan: Lois Holcomb, Marlene Sprinkle, Jane Hobson, Faye Wooten, Margaret Logan, Shelby Kimmer, Barbara Cornelius, Mayo Moxley. Standing: J. D. Welborn, Jr., Dean Prim, Charles Bryant, Jimmy Martin, Johnny Reece, George Helton, Bobby Holcomb, Bobby Dinkins, Annawee Pendergrass, J. E. Southard, Jean Carol Adams, Betty Lou Riggans, Velna Hall, Adelaide Hinshaw, Georgia Cashion, Jerrie Carlton, Robert Shore, Georgia Todd, Shirley Smith, Janet Haynes, Shirley Todd, Billy Whitaker, Scottie Sue Adams, Miss Mary Harding, Sponsor.

MONOGRAM CLUB

President
Babby Holcamb

Vice-President
Jimmy Martin

Secretary
Janet Haynes

Treasurer
Delana Dinkins



First row: Velna Hall, Betty Hutchens, Shelby Williams, Patty Lang, Kathryn Williams, Ruby Taylor, Betty Redding, Peggy Hawell, Annawee Pendergrass, Gilly Ann Waganer. Second row: Reta Peoples, Ethel Myers, Janet Haynes, Libby Smith, Ouida Brawn, Marlene Sprinkle, Frances Harding, Georgia Cashion, Adelaide Hinshaw, Jean Hutchins. Third row: Lee Hinshaw, Jimmy Martin, Floyd Wilmath, Delana Dinkins, Charles Bryant, Jimmy Narth, Kent Cranfill, Bobby Dinkins, Babby Halcamb, George Helton. Fourth row: Jimmy Williams, D. C. Carnelius, Robert Williams, Dean Prim, Keith Hawell, Donald Carter, Lonnie Gray McCollum, Odell Smith, Thurmond Phillips, Hamer Sheltan. Fifth row: Robert Share, Donald Johnson, Robert Buchanan, Carl Share, Jr., Sanford Willard, Joe Taylor, Mr. Bill Bridgewater, Coach.



FUTURE HOMEMAKERS OF AMERICA



F. H. A. OFFICERS

First row: Barbara Cornelius, Vice-President; Georgia Todd, Secretary; Shirley Todd, President. Second row: Janet Haynes, Song Leader; Ada Pearl Sheek, Historian.



CAROLINA WAREHOUSE
Winston-Salem, North Carolina
"The Best Place to Sell Your Tobacco."



FUTURE FARMERS OF AMERICA



YADKINVILLE ROLLER MILL COMPANY
Feeds - Seeds - Fertilizers - Tobacco Flues
Tobacco Curers - Custom Grinding and Mixing



4-H CLUB

First row: Betty Hutchens, Nora Spillman, Patty Gregory, Nell Spillman, Betty Redding, Peggy Howell, Lorene Williams, Ethel Myers. Second row: Janet Haynes, Gertrude Wall, Peggy Miller, Velna Hall, Gilly Ann Wagoner, Frances Harding, Adelaide Hinshaw, Georgia Cashion, Barbara Cornelius. Third row: Jo Ann Atwood, Velma Trivette, Joan Wooten, Betty Salmons, Barbara Dowell, Barbara Ann Norman, Georgia Todd, Faye Peele. Fourth row: Beatrice Williams, Billy Brandon, Sanford Willard, Chester Wooten, Odell Smith, Max Cranfill.



BUS DRIVERS

First row: Billy Whitaker, L. H. Vestal, Donald Kimmer. Second row: Chester Wooten, Lonnie McCollum, Harold Dinkins, Bill Dull, Sanford Willard, Walser Bates, Robert Williams, Junior Sizemore.

FARMERS FEED AND SEED STORE
Fine Meats and Groceries
Yadkinville, North Carolina

OFFICE GIRLS



Seated: Janet Haynes, Nell Spillman. Standing: Beatrice Williams, Ruby Taylor, Jean Hutchins, Ethel Myers, Betty Hutchens.



OFFICE GIRLS

Seated: Bettye Payne, Juanita Hutchens, Louise Hawks. Standing: Alma Jean Pendry, Margaret Wooten, Ferne Harrison.

BRENDLE CASH WHOLESALE, INC.
222-226 East Main Street
Elkin, North Carolina

HIGH SCHOOL KING AND QUEEN



HIGH SCHOOL

Adelaide Hinshaw, Queen
Walser Bates, King

J. H. DOBBINS AND SONS
Headquarters For Arrow Shirts, Star Brand Shoes
Phone 2046 Yadkinville, N.C. Carl Shore, Owner

HALLOWEEN KINGS AND QUEENS

GRAMMAR GRADES

George Vestal
King

Ruby Williams
Queen



PRIMARY GRADES

Patty Maynard
Princess

Robert Cline
Prince



LUNCHROOM STAFF

Mrs. Wade Reavis, Mrs. Frank Davis, Mrs. Davis Long, Mrs. Georgia Cashion, Mrs. Leola Gardner, Mrs. Jim Branon.

LUNCHROOM WORKERS

Billy Hutchens, Bobby Collins, Barbara Cornelius, Betty Collins, James Williams, Veme Harrison, Betty Riggans.



CUSTODIANS

Mr. and Mrs. Wade Reavis

Sports





FOOTBALL TEAM

First row: Lee Hinshaw, Manager. Second row: Dean Prim, Jimmy Martin, Robert Buchanan, Keith Howell, Carl Shore, Jr., Charles Bryant, Jimmy North, D. C. Cornelius. Third row: Coach Bill Bridgewater, Robert Shore, Delano Dinkins, Floyd Wilmoth, Donald Carter, Homer Shelton, Sanford Willard, Roger Hutchens, Odell Smith, Max Welborn, Assistant Coach. Fourth row: Jimmy Williams, George Helton, Joe Taylor, Marcus Hawks, Donald Johnson, Bill Williams, Albert Brown.

Manager

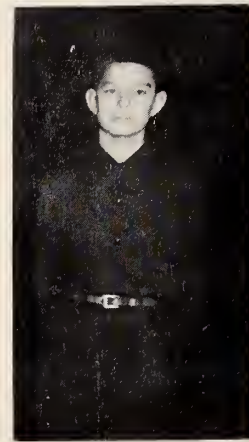
Max Cranfill

Coaches

Bill Bridgewater
Max Welborn

Manager

Lee Hinshaw



BOCOCK - STROUD COMPANY
Winston-Salem, North Carolina
Your Sporting Goods Store

FOOTBALL SCORES

Yadkinville 12.....	Cooleemee 0
Yadkinville 9.....	Franklin 19
Yadkinville 26.....	Flat Rock 0
Yadkinville 40.....	Lansing 20
Yadkinville 0.....	Jonesville 6
Yadkinville 13.....	Millers Creek 33
Yadkinville 0.....	Boonville 26
Yadkinville 6.....	Griffith 14



TRI-CAPTAINS

Delano Dinkins Floyd Wilmoth Robert Shore

STARTING LINE-UP



The Hornets' football team had its most successful season in recent years. Although only three games were won, all of them were close, hard-fought games. Good teamwork and sportsmanship were outstanding throughout the year.

The high point of the season came in the first game with the Cooleemee team, which had been undefeated in the last two seasons. Yadkinville won a close 12 to 0 decision.

By graduation the team lost only three regulars--Robert Shore, Floyd Wilmoth, and Delano Dinkins, tri-captains.



GIRLS' BASKETBALL TEAM

Left to right: Betty Redding, Peggy Howell, Gertrude Wall, Ouida Brown, Janet Haynes, Libby Smith, Gilly Ann Wagoner, Frances Harding, Jane Hobson, Marlene Sprinkle, Jean Hutchins, Georgia Ann Cashion; Coach Bill Bridgewater; Barbara Ann Cornelius, manager.

Yadkinville High School came out with another successful girls' team during the 1952-1953 season.

Having been set back considerably by last year's graduation, the Hornets were not at their best at the beginning of the season. However, the newcomers fought hard for wins.

Among forty girls who were working for starting position, Coach Bill Bridgewater chose the following: Forwards: Janet Haynes, Libby Smith, and Peggy Howell; Guards: Jean Hutchins, Gilly Ann Wagoner, and Frances Harding.

Other members of the squad were Ouida Brown, Bonnie Dinkins, and Gertrude Wall; Jane Hobson, Marlene Sprinkle, and Georgia Ann Cashion.

Co-captains Jean Hutchins and Janet Haynes were the only seniors on the team. A fine team is expected from the squad next year.

JAMES WILLIAMS AND COMPANY

Manufacturers - Stationers - Paper Merchants - Office Supplies

Phone 3556 Yadkinville, North Carolina



Janet Haynes
Co-Captain



Jean Hutchins
Co-Captain



Frances Harding



Peggy Howell



Ouida Brown



Gilly Ann Wagoner



Betty Redding



Marlene Sprinkle



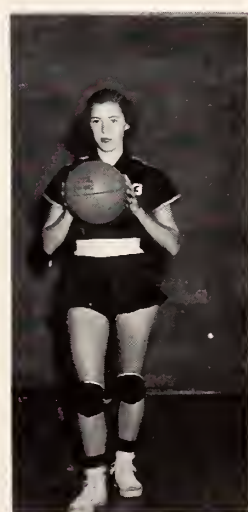
Libby Smith



Georgia Ann Cashion



Jane Hobson



Gertrude Wall



BOYS' BASKETBALL TEAM

First Row: George Heltan, Robert Share, Delano Dinkins, Kent Cranfill, Bobby Halcamb.
 Second row: Coach Bill Bridgewater, Sanford Willard, J.E. Southard, Donald Carter, Bobby Dinkins, Hamer Shelton.

The boys' basketball team of Yadkinville High got off to a slow start, but soon began to set a fast pace.

Bobby Halcamb, a 5'10" forward, was the team's leading scorer. He was closely pressed on the offensive by Homer Shelton and Bobby Dinkins.

Lack of height on the team was a great disadvantage which had to be overcome by speed and hustle.

Showing a great competitive spirit and good attitude toward teamwork, the starting five were Bobby Holcomb and Homer Shelton, forwards; Bobby Dinkins, center; Robert Share and Kent Cranfill, guards. Leading reserves were J.E. Southard, Delano Dinkins, Keith Howell, and Sanford Willard.

The only losses by graduation were: Co-captains Bobby Holcomb and Bobby Dinkins; Robert Shore, Delano Dinkins, and Sanford Willard.

CLAUDE CORNELIUS ESSO SERVICE AND GROCERY
 On U. S. Highway 421 at Enan
 Phone 3021 East Bend, North Carolina

Bobby Holcomb
Co-Captain



Bobby Dinkins
Co-Captain



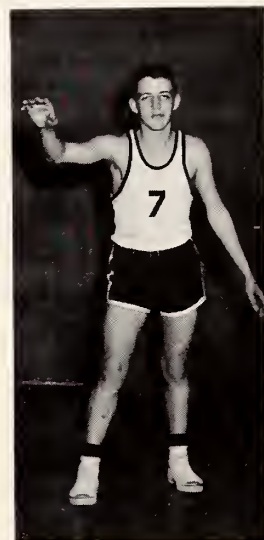
Robert Shore



Sanford Willard



Delano Dinkins



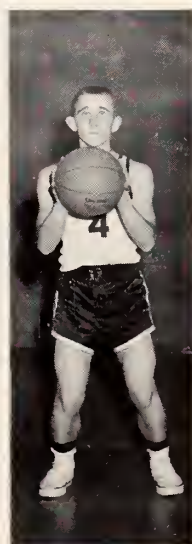
Kent Cranfill



J. E. Southard



Homer Shelton



George Helton



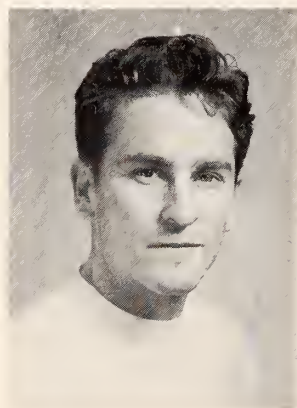
Donald Carter



JUNIOR VARISITY BASKETBALL TEAM

First row: Bill Brandan, Donald Jahnson, Jimmy Taylor, Lee Hinshaw. Secand raw: Jimmy Williams, Jimmy Martin, Carl Share, Jr., Alvin Hutchens. Third row: Robert Buchanan, Donald Carter, Keith Howell, Ray Hayes, Caach Max Welbarn.

The Juniar Varsity wan three af the first six games. In these games, 209 paints were scared as campared ta 205 far their appanents. Alvin Hutchens, Keith Hawell, Jimmy Williams, and Carl Share led the scoring. Mr. Max Welborn, the caach, was assisted by Mr. Bab Crissman, student teacher from Appalachian State Teachers College at Baane, North Caralina.



MR. BOB CRISSMAN



HOMECOMING QUEEN

JANET HAYNES

QUEEN AND ATTENDANTS

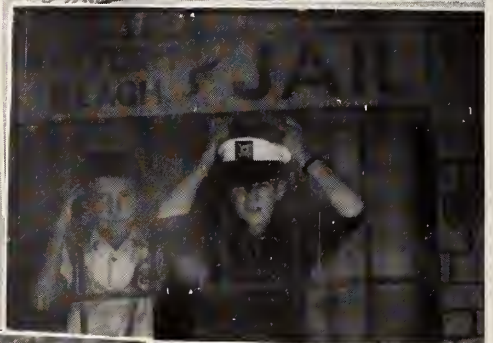


Georgia Ann Cashion, Marlene Sprinkle, Janet Haynes, Libby Smith, Jean Carol Adams.

HOMECOMING SNAPSHOTS



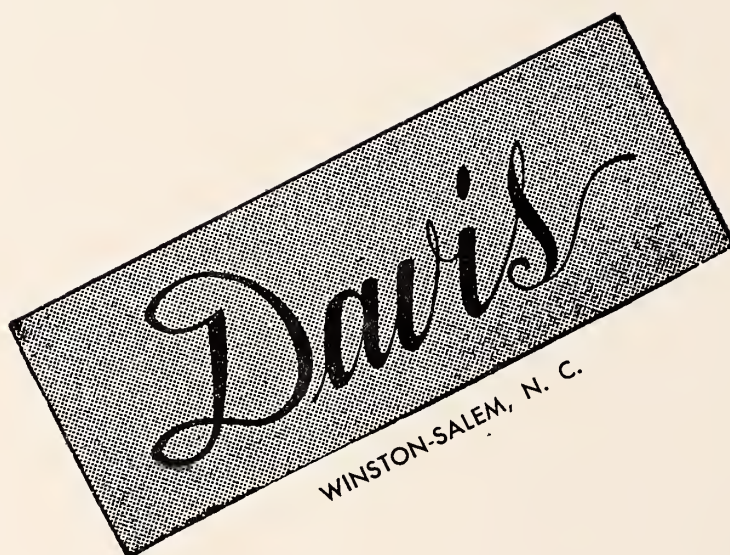
SNAPSHOTS



Advertisements



COMPLIMENTS OF . . .



RECOLLECTION OF QUALITY REMAINS
LONG AFTER PRICE IS FORGOTTEN
WEST FOURTH AT TRADE
PHONE 8156

YADKIN LUMBER COMPANY

LUMBER AND BUILDING MATERIALS

When You Need Lumber, Call Our Number

PHONE 3911

YADKINVILLE, N. C.

PEERLESS ICE CREAM COMPANY

Winston-Salem, North Carolina

YOUR PEERLESS ICE CREAM DEALERS IN YADKINVILLE

MILLS ICE CREAM STAND
EAGLE CAFE

FARMERS FEED AND SEED STORE
CHOPLINS



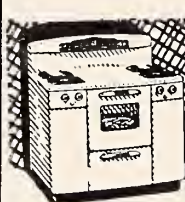
Ice-cold Coca-Cola

turns a  little pause

into a big rest 

DRINK
Coca-Cola
REG. U. S. PAT. OFF.

BOTTLED UNDER AUTHORITY OF THE COCA-COLA COMPANY BY



Come, see the amazing

TAPPAN TEL-U-SET

WINSTON-SALEM, N. C.

CHARLES V. DELLINGER

PLUMBING AND HEATING CONTRACTOR
KEWANEE AND AMERICAN BOILERS - PETRO AND ARCO-FLAME BURNERS
STANDARD PLUMBING FIXTURES - MYERS PUMP

Yadkinville, North Carolina

Phone 3786

SAM BRANON Grocery and Service

STAPLE AND FANCY GROCERIES
ICE CREAM AND COLD DRINKS

One Mile West on Highway 421

YADKINVILLE, N. C.

Phone 3841

YADKINVILLE USED CARS

WE BUY, SELL,
TRADE, AND FINANCE

PHONE 4451

YADKINVILLE, N. C.

T. L. HAYES COMPANY, INC.

MEN'S, WOMEN'S, CHILDREN'S
READY-TO-WEAR

FURNITURE AND WESTINGHOUSE
APPLIANCES

FUNERAL DIRECTORS

Phone 2251

Boonville

East Bend

YADKIN CLEANERS

SEND YOUR LAUNDRY
WHEN YOU SEND YOUR CLEANING

Complete Service
One Call Does It All

PHONE 3331

YADKINVILLE, N. C.

FRED N. DAY SONS, INC.

"Jewelers Since 1893"

Winston-Salem, N. C.

SIGN OF THE BIG CLOCK

428 North Trade Street

**P. AND N. DEPARTMENT
STORE**

Ruth Holcomb

Tress Sprouse

YADKINVILLE, N. C.

ROYAL TYPEWRITERS
PORTABLE — ELECTRIC — STANDARD
**CAROLINA BUSINESS MACHINE
COMPANY**

616 West 4th Street
WINSTON-SALEM, N. C.

CRISSMAN CLOTHIERS

ALL NATIONALLY ADVERTISED BRANDS

Gene Crissman, Manager

PHONE 2911

Boonville, N. C.

LONG AND WISHON

FEEDS, SEEDS, GROCERIES

Phone 3366

YADKINVILLE, N. C.

DIAMONDS

SILVER

WATCHES

PARRISH JEWELRY STORE

YADKINVILLE, N. C.

Did You Know . . .
In Yadkinville We Have
One of the Most Complete
One-Stop Service Stations in
North Carolina

McLEOD'S SHELL SERVICE

Phone 3691
YADKINVILLE, N. C.

FAVORITE CLEANERS

DRY CLEANING — LAUNDRY
COMPLETE HAT REBUILDING SERVICE
ALTERATIONS

Phone 2641
YADKINVILLE, N. C.

Roger Russell

Lester Bell

Owners

BANK OF YADKIN

Yadkinville, N. C.

DEPOSITS INSURED UP TO \$10,000 FOR EACH DEPOSITOR

Your Patronage Is Appreciated

PHONE 2101

ADAMS MOTOR COMPANY

YOUR DODGE AND PLYMOUTH DEALER

PHONE 2351

Yadkinville, N. C.

ESSO

Fuel Oil — Kerosene

Motor Oil

REAVIS and HOLCOMB

YADKINVILLE, N. C.

EAST END GARAGE

AUTO AND TRUCK REPAIRING

BODY AND FENDER WORK

WELDING — PAINTING

Phone 2781

YADKINVILLE, N. C.

Sid Hutchins, Owner

HARMONY HEIGHTS LUMBER COMPANY

ROUGH AND FINISHED LUMBER

Phone 2211

YADKINVILLE, N. C.

YADKINVILLE

THEATER



Yadkinville
North Carolina

**MASON HARDWARE &
ELECTRIC CO.**

GENERAL HARDWARE

Phone 2921
YADKINVILLE, N. C.

**BOONVILLE CLEANERS AND
LAUNDRY**

PROMPT SERVICE

"For Cash and Carry"

PHONE 2501
BOONVILLE, N. C.

**CRATER-HOOTS FURNITURE
and
YADKINVILLE CLOTHING CO.**

Phone 2261
YADKINVILLE, N. C.

**BELK-STEVENS COMPANY
DEPARTMENT STORE**

WINSTON-SALEM, N. C.

**HARMONY HEIGHTS SUPPLY
COMPANY**

FEEDS — FERTILIZERS — SEEDS
TOBACCO FLUES AND CURERS
BEE SUPPLIES

Phone 2221
YADKINVILLE, N. C.

YADKIN FURNITURE COMPANY

YOUR HOTPOINT DEALER

Phone 2286
YADKINVILLE, N. C.

LIBERTY

**FARMERS
WAREHOUSES**

DIXIE

SELL YOUR TOBACCO WITH US — TWO SALES EVERY DAY
Owners

F. P. JOYCE

BILL SHEETS

JOE PELL

MOSS JOYNER

Auctioneer: Roy Cribb

Winston-Salem

North Carolina

MATHIS JEWELRY STORE

YOU NAME IT — WE HAVE IT

Hamilton
Elgin
Bulova



Silverware
China
Crystal

Phone 2341

Night 2731

BOONVILLE, N. C.

JUNIOR GROCE'S ESSO SERVICE

COMPLETE ESSO SERVICE

On Courthouse Square

PHONE 2146

YADKINVILLE, N. C.

GRASSY CREEK FARM

Distributor of

Sealtest Dairy Products

Elkin, North Carolina

V. FRANK MILLER

GRAHAM GREENE

WINSTON POULTRY CO.

322 West 7th Street
Post Office Box 1931

WE BUY POULTRY AND EGGS
EVERY DAY IN THE YEAR AT
HIGHEST MARKET PRICES

Phone 7089 or 6827
Winston-Salem, N. C.

INSCORE and GRAHAM

SELF-SERVICE GROCERY

Phone 2346

YADKINVILLE, N. C.

TODD IMPLEMENT COMPANY

SALES AND SERVICE FOR THE FERGUSON SYSTEM
MECHANIZED FARMING

Phone 3641

JONES TODD

PINNIX SHORE

LUTHER TODD

Sell Tobacco with

BURNIE COOK
WILLIAM FOWLER

CLAUDE STRICKLAND
FRED McLAUGHLIN

PENN THOMAS
JULIAN VAUGHN

at

COOK'S WAREHOUSE No. 1 and 2

North Patterson Avenue on Highway 52

and

PIEDMONT WAREHOUSE

Winston-Salem, North Carolina

WE HAVE TWO SALES EVERY DAY

SPAINHOUR'S

A MODERN DEPARTMENT STORE

Elkin, North Carolina

DRIVER'S
Self-Service Grocery
and
SERVICE STATION

Phone 4371
YADKINVILLE, N. C.

JIM'S GRILL

2 Miles North of Yadkinville

WE SPECIALIZE IN

SHORT ORDERS — SANDWICHES
CURB SERVICE

Jim Pardue

Yadkinville

FRIGIDAIRE

PIONEER CHEVROLET COMPANY, Inc.

REFRIGERATION AND ELECTRIC DIVISION
SALES AND SERVICE

PHONE 3861 OR 2151

Yadkinville, North Carolina

RADIO AND TV

MAYTAG

FURNITURE

TAYLOR WAREHOUSE COMPANY

Winston-Salem, North Carolina

PAUL T. TAYLOR

JOHN H. DYER

Compliments
of

ISENHOUR JEWELERS

ELKIN, N. C.

BLACKWELDER FURNITURE CO.

"The Home of Quality Furniture for
Less Money"

OPEN EVENINGS UNTIL 7:30

Phone 549

JONESVILLE, N. C.

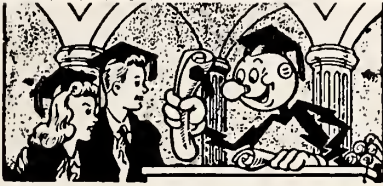
W. H. WILLIAMS INSURANCE AGENCY

FIRE, LIFE, AND CASUALTY INSURANCE

SEE US ABOUT LOW COST AUTOMOBILE LOANS

Phone 5-1112

Lewisville, North Carolina



Your Teachers Had One Purpose

There was just one big lesson
they set out to teach you—
believe in yourself.

Self reliance, confidence,
and initiative have made
the Piedmont Carolinas one
of the finest places you
could possibly live and work
in. So . . . congratulations,
the stage is yours!

DUKE
POWER COMPANY
Serving the Piedmont Carolinas



"Makes the Good Earth Better"

Davis Long, Dealer

PHONE 3678

YADKINVILLE, N. C.

BROWN'S DEPT. STORE

READY-TO-WEAR

for

MEN — WOMEN — CHILDREN

FURNITURE — HOUSE FURNISHINGS
STOVES AND FLOOR COVERINGS

Phone 2161

YADKINVILLE, N. C.

Beef at Its Best

Bill and Betty Hall
Owners

LAZY H FARM
⌘
POLLED HEREFORDS

Visitors Welcome

YADKINVILLE, N. C.

BROWN and PIEDMONT WAREHOUSES

BILL SIMPSON

Owners
BOBBY NEWSOME

HOUSTON HALL

Auctioneer: Hobb Fowler

Winston-Salem

North Carolina



**ALLAN JESSUP INSURANCE
AGENCY**

"Guarantee your Independence" with a
**JEFFERSON STANDARD LIFE INSURANCE
POLICY**

Other Lines: Fire — Automobile — Hail
Plate Glass — Liability

My business is built on satisfied
customers

Phone 2481

Boonville, N. C.

BULL DOZING

YADKINVILLE, N. C.

PAN-WORK AND MOTOR GRADING
STUMPING, TERRACING, ROAD
BUILDING AND BOGGING

**JAMES DOBBINS
TOM DAVIS**

Telephone 3261

Telephone 3631

YADKINVILLE, N. C.

SEATS THEATRE

FOR A GOOD MOVIE IN WARM AND
COMFORTABLE SURROUNDINGS

Charlie Seats

E AND J BARBECUE HOUSE

"Yours for Year 'round Eating Pleasures"

J. W. (Red) Williamson, Owner

Brooks Cross Road, North Carolina

Intersection U. S. Highway 21 and 421

YADKIN FARM CENTER

BABY CHIX — SEED — FARM SUPPLIES

Phone 3891

YADKINVILLE, N. C.

