

1962
Yadkinian



YADKIN COUNTY PUBLIC LIBRARY

P. O. BOX 607

YADKINVILLE, NC 27055


Member Of

NORTHWESTERN REGIONAL LIBRARY




Digitized by the Internet Archive
in 2014

<https://archive.org/details/yadkinian19621962yadk>



1962

Yadkinian



Published by
The Senior Class
of
Yadkinville High School
Yadkinville, North Carolina

Foreword

From the little, everyday happenings of school routine to the important, space-shaking events of universal interest, students and teachers shared an exciting year at Yadkinville School.

Stressing quality education, they approached their work more seriously than ever before; practicing democracy, they participated in activities to develop citizenship; believing in the future, they expect greater achievements when consolidation of schools becomes a reality in Yadkin County.

The staff would like to share with the reader some of the events of the year.

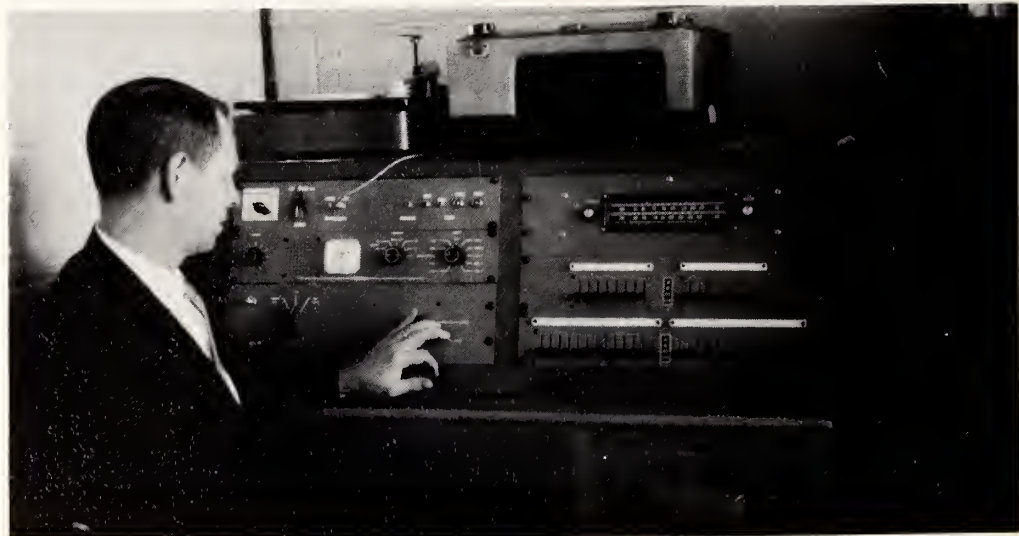


... raising the flag



... waiting for another day's work

... making an announcement on the new inter-communication system





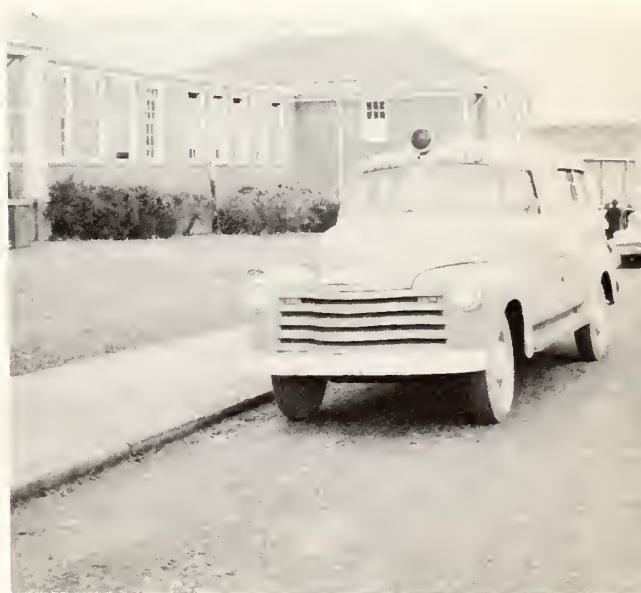
... using the card catalog in the library



... typing tests, reports, or letters



... keeping up with dollars and cents



... waiting for passengers for special education classes in Elkin



Visiting alumnus (Larry Groce-'61) presents Hornet emblem to school.



... lining up her target on Camera Day



...relaxing at the usually crowded water fountain



... practicing commencement music



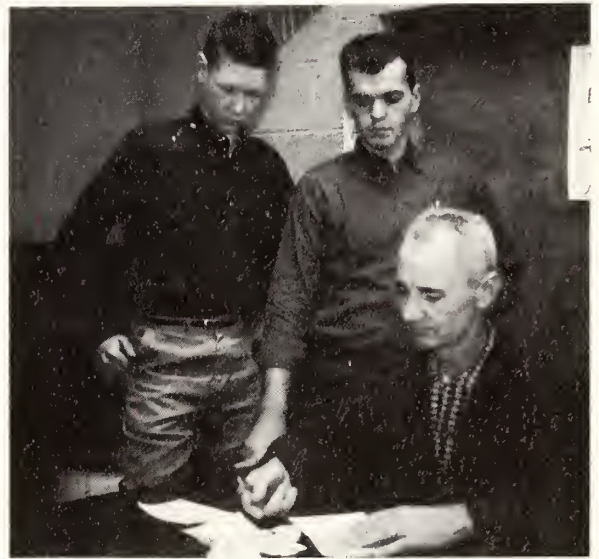
... demonstrating a popular yo-yo trick

...working on publications



... eating lunch

...comparing the long and the short of the matter



... signing admission slips

Table of Contents

DEDICATION.....	6
ADMINISTRATION.....	7
CLASSES.....	13
ACTIVITIES.....	39
SPORTS	57
ELEMENTARY SCHOOL.....	77
ADVERTISING.....	91



MR. TOM BOYETTE

"The reason firm, the temperate will,
Endurance, foresight, strength, and skill."

To MR. BOYETTE—our teacher, coach, leader,
and friend—we dedicate the 1962 YADKINIAN.

*Administration
and
Faculty*



Administration



MR. FRED C. HOBSON
Superintendent
Yadkin County Schools



MISS VIOLET LESTER
Supervisor of Instruction



MR. GILVEN ANGELL
Driver Training Instructor

MRS. THOMAS LEE WILLIAMS
Special Education Teacher

District
Committee

Not Shown:
MR. L. RAY HUTCHINS

Yadkinville
Parent-Teacher
Association



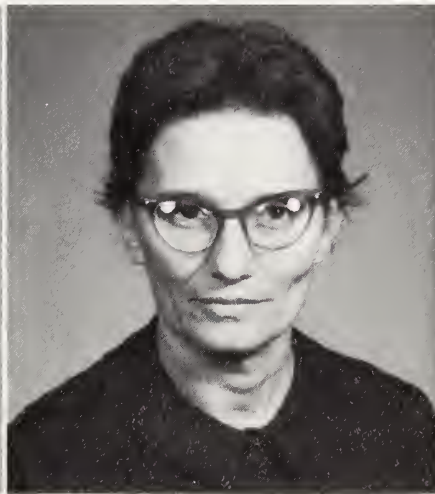
MR. JAMES WILLIAMS



MR. JAMES DOBBINS



MR. FRANK YEAGER
President



MRS. HOMER GABARD
Secretary



MRS. TOM DAVIS
Treasurer



MRS. CHARLIE GOUGH
Piano Teacher



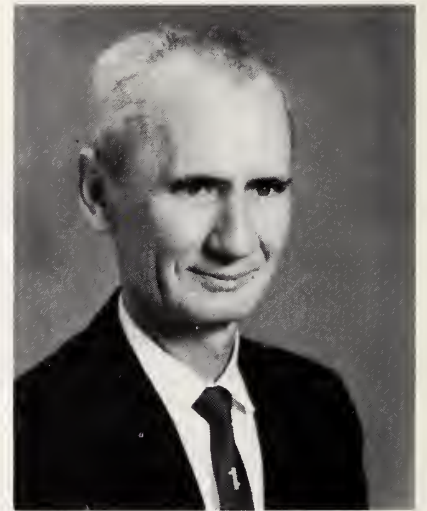
MRS. JIM WILLIAMS
Secretary

Not Shown:
MR. JIMMIE REINHARDT
Vice-President

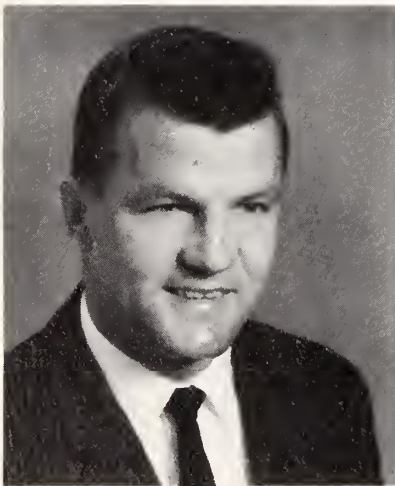
High School Faculty



MR. R. P. BUCHANAN, Principal
Western Carolina College
University of North Carolina



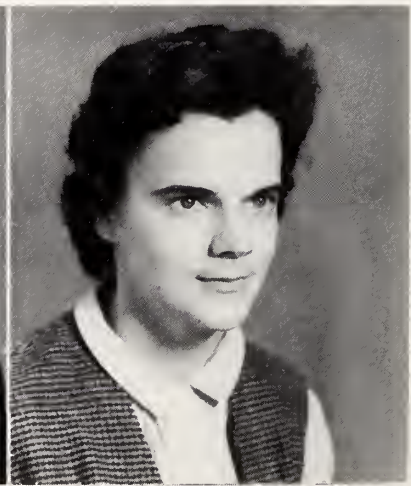
MR. HERBERT L. CAMERON
Agriculture
North Carolina State College



MR. NELSON BEST
Homeroom 9A
Physical Education, Social Studies
East Carolina College



MR. TOM BOYETTE
Homeroom 9B
Physical Education, Social Studies
Appalachian State Teachers
College



MRS. ROY DOUB
Homeroom 9C
Mathematics, Science
Appalachian State Teachers
College



MISS BARBARA HENSLEY
 Homeroom 10A
 Home Economics
 Woman's College of the
 University of North Carolina



MRS. FELIX McKNIGHT
 Homeroom 10B
 Science
 Woman's College of the
 University of North Carolina



MR. FRANK WILSON
 Homeroom 10C
 English
 Appalachian State Teachers
 College



MR. MAX DAVIS
 Homeroom 11A
 Business Education
 High Point College
 University of North Carolina



MRS. GORRELL PRIM
 Homeroom 11B
 French, Social Studies
 Woman's College of the
 University of North Carolina



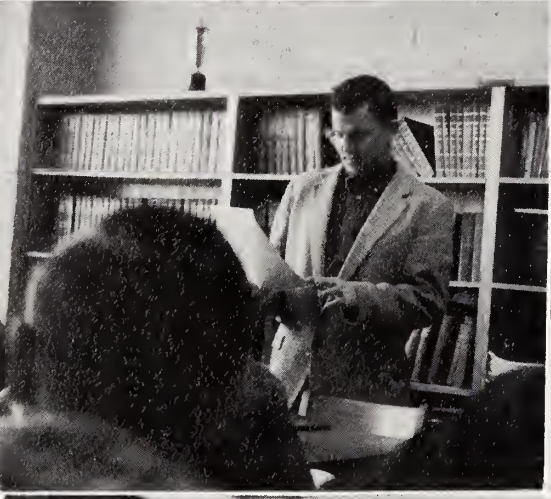
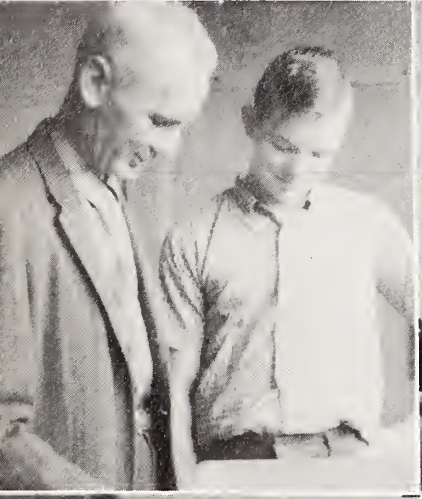
MR. JOE KEY
 Student Teacher
 Social Studies
 Appalachian State Teachers
 College



MRS. R. P. BUCHANAN
 Homeroom 12A
 English
 Western Carolina College



MRS. CARL HOOTS
 Homeroom 12B
 Mathematics
 Appalachian State Teachers
 College



Classes



Senior Officers



LUPTON WOOD, President; STEVE ZACHARY, Vice-President; NANCY DELLINGER, Secretary; ALLEN BRANDON, Treasurer.

Mascots

HOMEROOM 12A

Woodie Dixon, Treasurer; Peggy Dorsett, Secretary; Emmitte Winslow, Vice-President; Allen Brandon, President.

HOMEROOM 12B

Judy Howell, President; Danny Royall, Vice-President; Nancy Dellinger, Secretary; Samuel Burgiss, Treasurer.



JANIE ROYALL



JOEY ABBOTT



JIMMY RAY BLEVINS
FFA 1, 2, 3, 4.



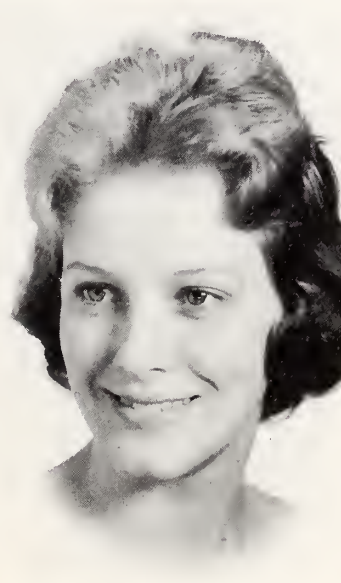
PEGGY WILLIAMS BOOE
Glee Club 1, 2, 3, 4; FHA 1, 2; 4-H Club 1, 2.



HENRY ALLEN BRANDON, JR.
Homeroom Officer 1, 2, 4; Class Officer 3, 4; Yadkinian Staff 4; Beta Club 3, 4; Glee Club 1, 3, 4; Electronics Club 1, 2, 3, 4; Monogram Club 3, 4; Presidents' Council 1, 4; Junior Play; Junior Marshal; Senior Superlative; Football 1, Manager 2, 3; Basketball 1, 2, 3, 4.



BUDDY GRAY BRAY
FFA 1, 2, 3, 4; Library Worker 1, 2; Baseball 1, 2, 3.



CORNELIA ETHYLENE BROWN
Glee Club 1, 2, 3, 4; FHA 1, 2, 3; 4-H Club 1, 2, 3; Pep Club 3; Library Club 1, 3.

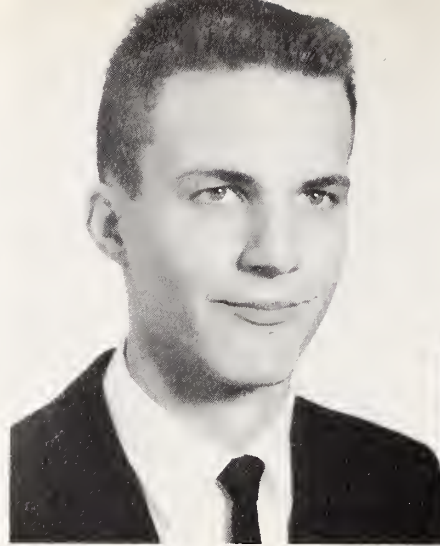


TERRY RANDOLPH BROWN
Glee Club 3, 4; 4-H Club 1, 2, 3; Monogram Club 2, 3, 4; Pep Club 1; Senior Superlative; Football 1, 2, 3, 4, Captain 4; Baseball 1, 2, 3, 4.



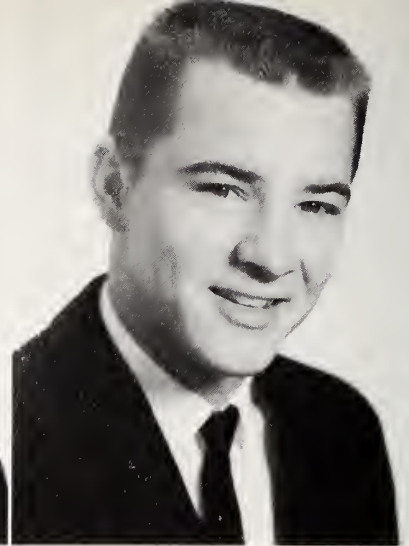
ZETTA JANE BROWN

Glee Club 1, 2, 3; FHA 1,2,3,4; Electronics Club 3; 4-H Club 1, 2, 3; Pep Club 1, 3; Library Club 1, 2, 3; Junior Play; Senior Superlative.



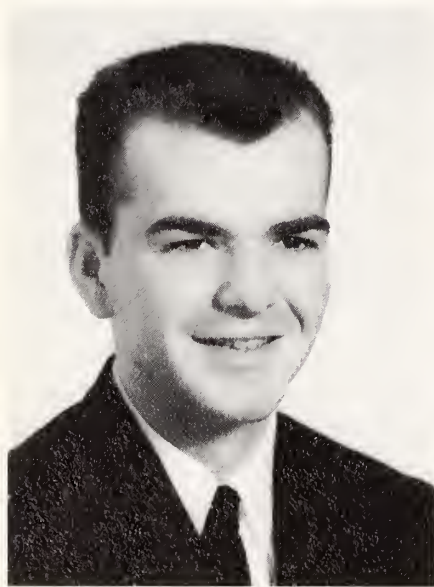
SAMUEL GRADY BURGESS

Homeroom Officer 4; Yadkinian Staff 4; Beta Club 3,4; Glee Club 1, 2, 3, 4; Electronics Club 1, 2, 3, 4; 4-H Club 2, 3; Pep Club 1, 3; Library Club 1, 2; Bus Driver 3, 4; Bus Driver Club 3, 4; Junior Play; Junior Marshal; Senior Superlative.



ROGER DALE CARLTON

Hanes High School 1; Homeroom Officer 3; Class Officer 3; Glee Club 3,4; FFA 4; Electronics Club 4; Monogram Club 2,3,4; Pep Club 3; Senior Superlative; Football 2, 3, 4, Captain 4; Baseball 2, 3, 4; Basketball 4.



WILLIAM MAX CARLTON



DONNA WETONA CARPENTER

Homeroom Officer 2, 3; Yadkinian Staff 4; Cheerleader 2,3,4, Chief 3,4; Glee Club 1,2,3,4; FHA 1,3,4; Monogram Club 2, 3, 4; Pep Club 1, 3; Library Club 1, 2, 3, 4; Library Worker 1,2; Office Worker 3; Receptionist 4; Junior Play; Homecoming Queen 4.



ALMA LOUISE CAUDLE

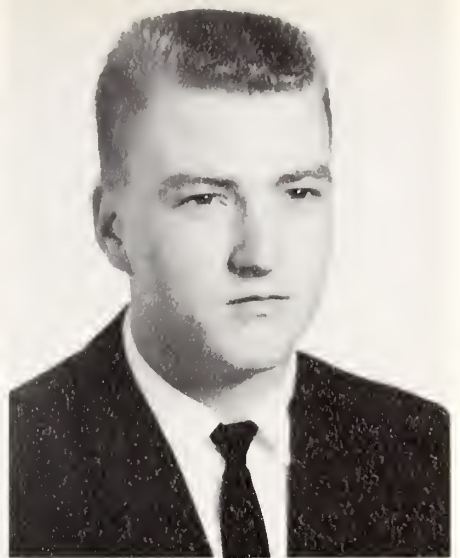
Glee Club 1, 2, 3; FHA 1,3; 4-H Club 1, 2, 3; Pep Club 1, 3; Library Club 2; Library Worker 2.



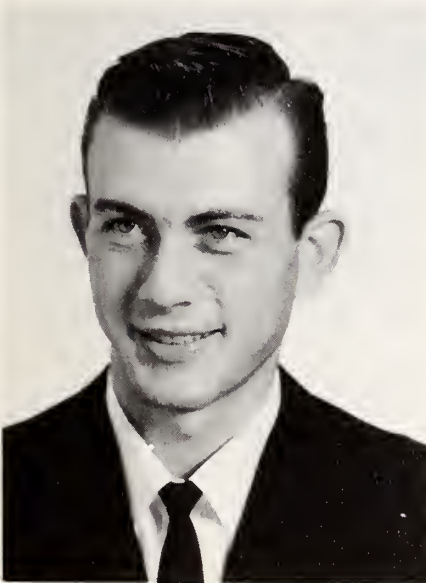
KAY FRANCES COLLINS
Beta Club 4; Glee Club 4; FHA 1, 2, 3, 4; Library Club 4.



NANCY ILENE DELLINGER
Homeroom Officer 2, 3, 4; Class Officer 4; Yadkinian Staff 4; Beta Club 3, 4; Glee Club 1, 2, 3, 4; FHA 1, 2, 3, 4; Electronics Club 2, 3, 4; Monogram Club 2, 3, 4; Presidents' Council 2, 3; Pep Club 1, 3; Library Club 1, 2, 3; Bus Driver Club 3; Junior Play; Homecoming Attendant 2, 3, 4; Junior Marshal; Senior Superlative; Basketball 1, 2, 3, 4, Captain 4.



WOODROW WILSON DIXON, JR.
Homeroom Officer 4; Glee Club 1, 4; 4-H Club 1; Monogram Club 4; Library Club 1, 2; Bus Driver 3, 4; Bus Driver Club 3, 4; Football 3, 4.



JESSE FRANKLIN DOBBINS
Glee Club 1, 2; FFA 1, 2, 3, 4; 4-H Club 1, 2; Bus Driver 3, 4; Bus Driver Club 3, 4.



PEGGY ANN DORSETT
Homeroom Officer 3, 4; Yadkinian Staff 4; Beta Club 4; Glee Club 1, 3, 4; 4-H Club 1, 3; Pep Club 1, 3; Library Club 1, 2, 3; Library Worker 2; Senior Superlative.



GRADY LEE DRAUGHON
FFA 1, 2, 3, 4; Library Club 3; Bus Driver 4; Bus Driver Club 4; Football 1.



LANNIE MAE GOSS

Yadkinian Staff 4; Glee Club 1, 3, 4;
FHA 1, 3; Junior Play.



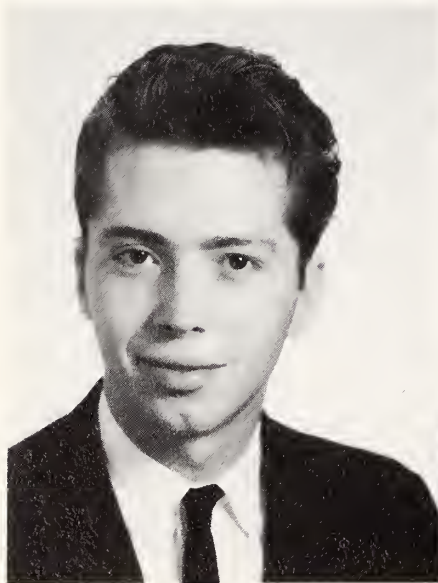
LINDA JANE GROCE

FHA 1, 2, 3; Library Club 3,4; Library
Worker 2.



ARLIE EDWARD HAWKS

Glee Club 1; FFA 1, 2, 3, 4; 4-H Club
1, 2; Library Worker 1, 2; Lunchroom
Worker 1, 2, 3, 4.



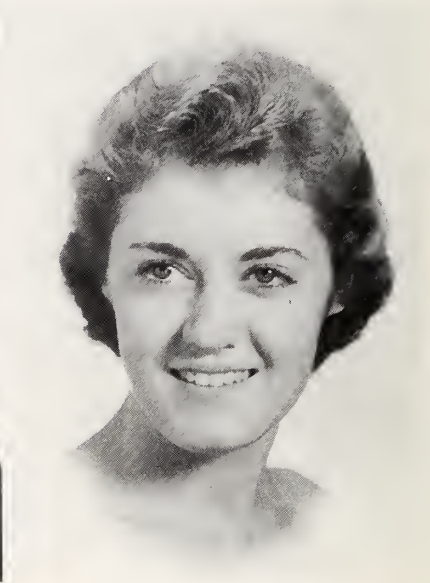
STEVE HARVEY HEMRIC, JR.

Homeroom Officer 2; Glee Club 2, 3, 4;
Bus Driver 3, 4; Bus Driver Club 3, 4;
Junior Play.



WILLIAM LARRY HENNINGS

Homeroom Officer 2; FFA 1, 2, 3, 4;
Electronics Club 1, 2; Bus Driver 2;
Baseball 1, 2.

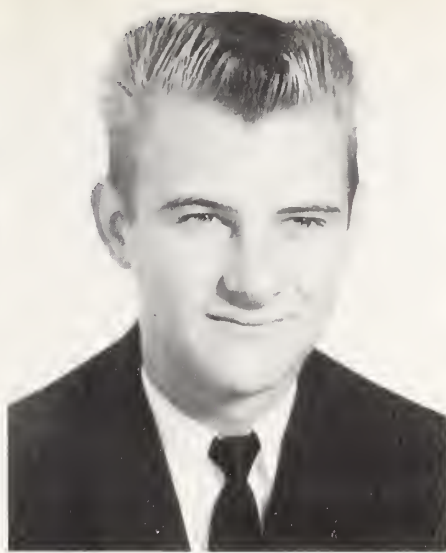


SHERLIE ANN HOBSON

Homeroom Officer 1; Glee Club 1, 2,
3, 4; FHA 1, 2; 4-H Club 1, 2, 3; Pep
Club 3; Library Club 1, 2, 3.



JOAN REAVIS HOLCOMB
Yadkinian Staff 4; Beta Club 3,4; Glee Club 1,2,3,4; FHA 1,2,3,4; Electronics Club 2,3; 4-H Club 1,2,3; Pep Club 1,3; Library Club 1,2,3,4; Library Worker 1,2,3,4; Junior Marshal; Junior Play.



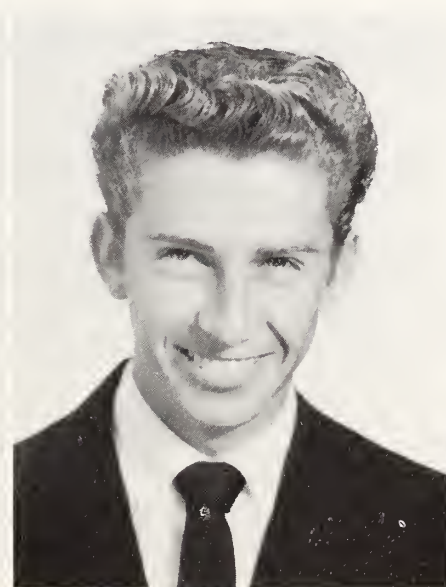
CLARENCE ARTHUR HOWELL
 FFA 1,2,3,4; Receptionist 1.



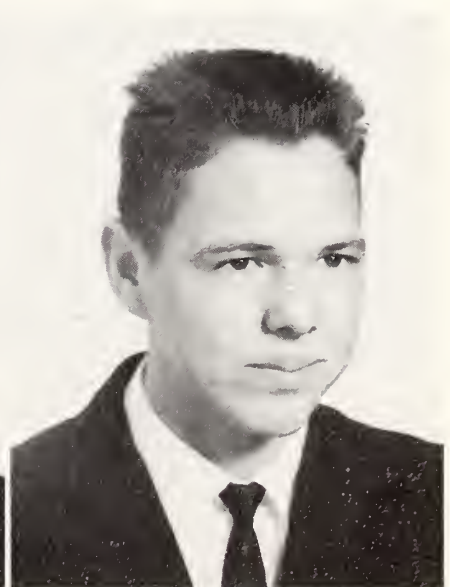
JUDY CAROL HOWELL
 Homeroom Officer 4; Beta Club 3,4; Glee Club 1,3; FHA 1; Presidents' Council 4; Library Club 1,2,3; Library Worker 2; Office Worker 2,3; Junior Play; Senior Superlative.



GLADYS MARIE HUTCHENS
 Glee Club 1,2,3,4; FHA 1,2; 4-H Club 1,2; Monogram Club 4; Pep Club 3; Library Club 1,2; Basketball 2.



JAMES MARSHALL HUTCHENS
 FFA 1,2,3,4; 4-H Club 1,2,3.



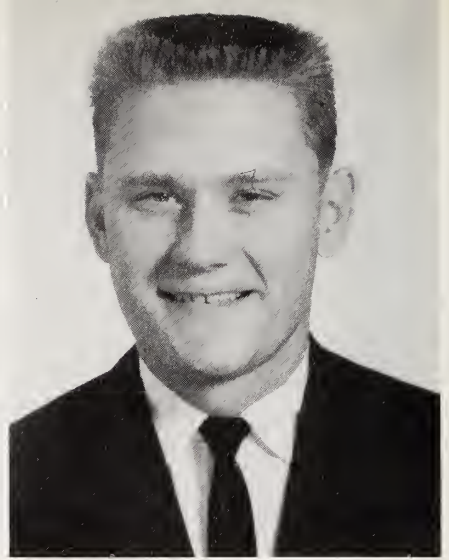
NOEL LEE HUTCHENS
 FFA 1,2,3,4; Bus Driver Club 4.



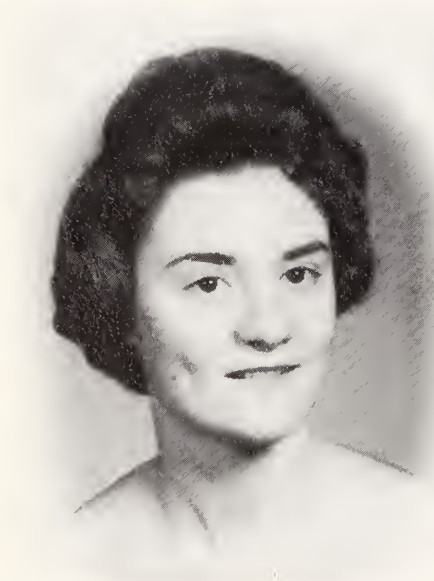
SARAH RAE McCOLLUM
Glee Club 4; FHA 1, 2, 3, 4; Library Club 4.



JUANITA SHARON MORSE
Hanes High School 1, 2; Reynolds High School 3; Library Club 4.



RUSSELL HAYDEN NIXON
FFA 1, 2; Monogram Club 3, 4; Baseball 2, 3, 4.



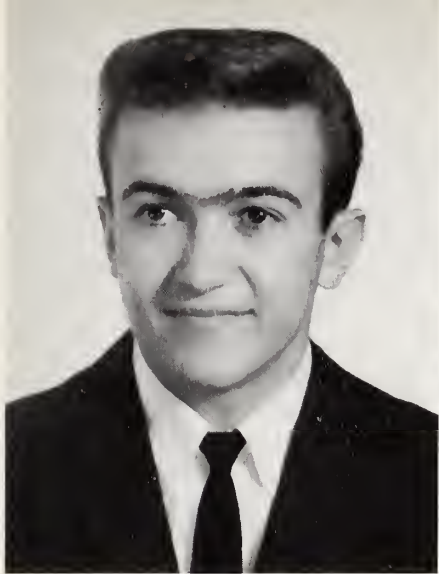
LINDA FREEMAN NORMAN
Glee Club 1, 2, 3, 4; FHA 1, 2, 3, 4; Electronics Club 2, 3; Monogram Club 3, 4; Pep Club 1, 3; Library Club 1, 2, 3; Junior Play; Basketball 2, 3, Manager 1.



BOBBIE JEAN PENDRY
Glee Club 1, 4; FHA 1, 2, 3, 4; Library Club 1, 2, 3, 4.



PATSY PERNEL PHILLIPS
Cheerleader 4; Glee Club 1, 2, 3, 4; FHA 1; 4-H Club 1, 2, 3; Monogram Club 4; Pep Club 1, 3; Library Club 1, 2, 3, 4; Library Worker 1, 2, 4; Senior Superlative.



TERRY STEPHEN RATLEDGE

Homeroom Officer 1,2; Glee Club 1,2,3,4; FFA 1,2; Electronics Club 1; 4-H Club 1,2,3; Monogram Club 3,4; Baseball 1,2,3,4; Basketball 3,4, Captain 4.



BRENDA HAIRE ROYAL

Homeroom Officer 1; Class Officer 3; Beta Club 3, 4; Glee Club 1,2,3; FHA 1,3,4; Pep Club 1; Library Club 1,2,3; Junior Play; Junior Marshal; Senior Superlative; Basketball 2.



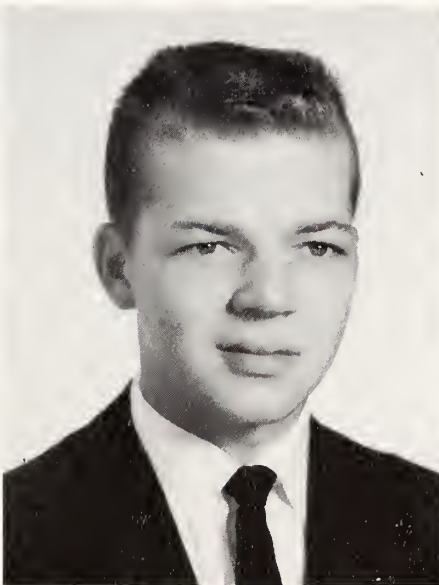
DANNY ALLEN ROYALL

Homeroom Officer 4; Glee Club 2,3,4; FFA 1; Monogram Club 4; Library Club 4; Library Worker 4; Junior Play; Senior Superlative; Football 1,4; Baseball 1,3,4.



LINDA GAIL SMITH

FHA 1,2,3; Library Worker 1,2; Receptionist 1.



ROBERT DARNELL SMITH, JR.

Yadkinian Staff 4; Glee Club 1,2,3,4; Pep Club 4; Library Worker 1,2,3,4; Football 1,2,3; Electronics Club 3,4.



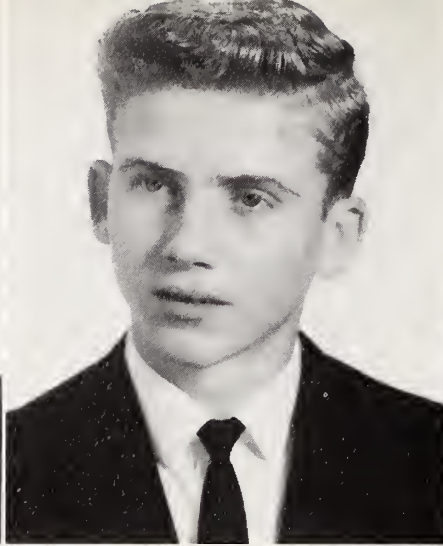
DAVID WOODROW TODD, JR.

Glee Club 1,2,3,4; Electronics Club 2,3,4; 4-H Club 1,2,3; Monogram Club 2,3,4; Pep Club 1,3; Library Club 1,2; Library Worker 1,2; Bus Driver Club 3; Halloween King 4; Football 1,2,3,4; Baseball 2; Basketball 3,4; Track 2,3,4.



HARRELL GRAY TODD

Glee Club 1,2,3,4; FFA 1, 2, 3, 4; 4-H Club 1; Monogram Club 1, 2, 3, 4, Pep Club 1; Library Club 1, 2; Bus Driver 3, 4; Bus Driver Club 4; Ice Cream Salesman 1, 2, 3; Junior Play; Basketball Manager 1, 2.



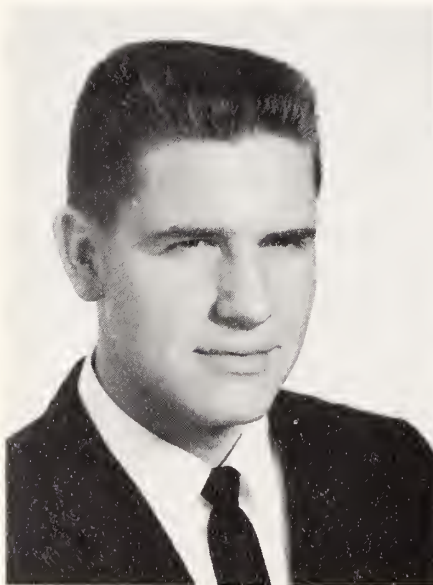
JOHN ELOY VESTAL

Glee Club 1, 2, 3, 4; Electronics Club 1, 2, 3, 4, Monogram Club 4, Pep Club 1, 3; Football 3, 4.



LONNIE JAMES WHITAKER

Homeroom Officer 2, 3; Glee Club 4; Monogram Club 2,3,4; Library Club 4; Bus Driver 3, 4; Bus Driver Club 3, 4; Baseball 1,2, Basketball 1,2,3,4, Captain 4.



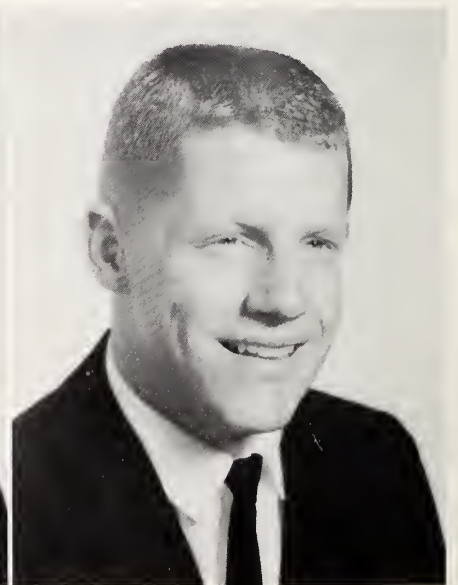
JAMES DALE WILLARD

Glee Club 1,2,3,4; FFA 1,2,4; Workers Club 1,2; Electronics Club 2; 4-H Club 1, 2, 3; Monogram Club 2, 3, 4; Pep Club 1,3; Library Club 1,2; Bus Driver 3, 4; Bus Driver Club 3, 4; Baseball 2, 3, 4.



EMMITTE ELSON WINSLOW

Manteo High School 1; Williamston High School 2,3; Homeroom Officer 4; Glee Club 4; Monogram Club 4; Football 4; Baseball 4; Basketball 4.



WILLIAM LUPTON WOOD, JR.

Homeroom Officer 2,3,4; Class Officer 3,4; Yadkinian Staff 4; Beta Club 3,4; Glee Club 1, 2, 3, 4; Electronics Club 1, 2, 3; 4-H Club 1, 2, 3; Monogram Club 3,4; Presidents' Council 2,3; Library Club 1; Junior Play; Junior Marshal; Senior Superlative; Football 1,2, 3, 4.



GARY CLARENCE WOOTEN
4-H Club 1, 2, 3.

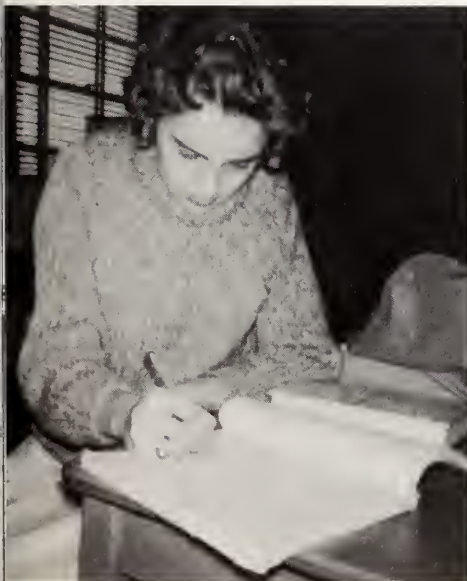


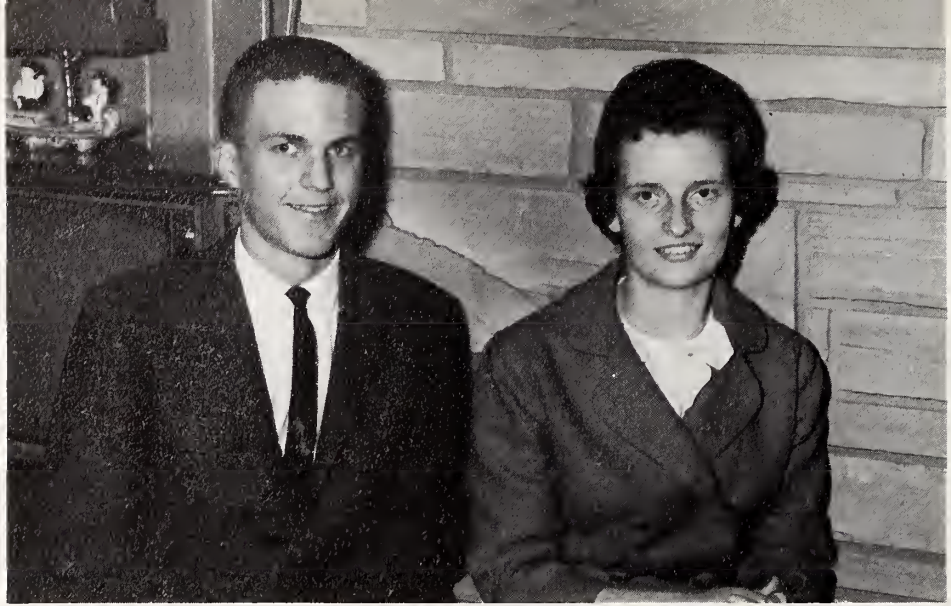
STEPHEN VANDER ZACHARY
Homeroom Officer 2, 3; Class Officer
4; Yadkinian Staff 4; Glee Club 1, 2,
3, 4; 4-H Club 1, 2, 3; Monogram Club
2, 3, 4; Pep Club 1; Junior Play; Base-
ball 2, 3, 4; Basketball 2, 3, 4.



Peggy Dorsett measures Alma Caudle
for cap and gown.

Judy Howell and Joan Holcomb prepare for business careers.





MOST DEPENDABLE
Samuel Burgiss
Brenda Royal



MOST INTELLECTUAL
Judy Howell
Allen Brandon

Superlatives



MOST ATTRACTIVE
Randy Brown
Jane Brown

Superlatives

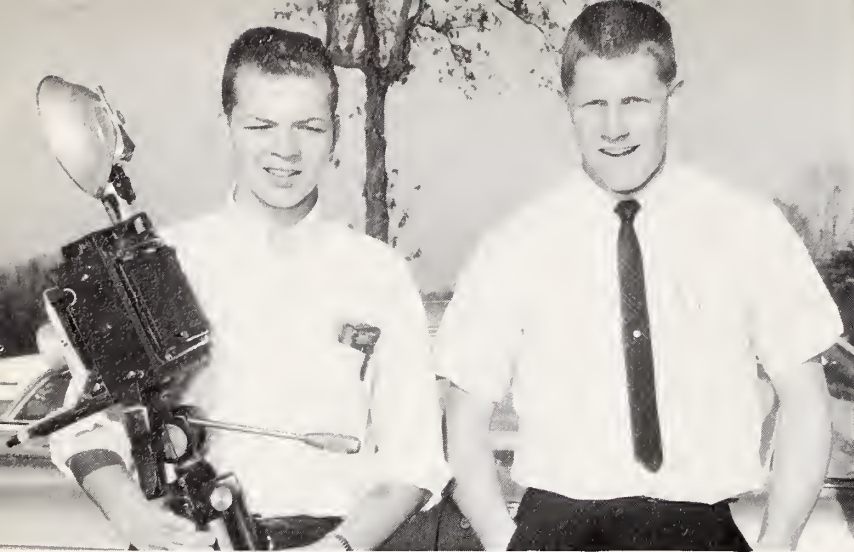
MOST ATHLETIC
Roger Carlton
Nancy Dellinger



BEST ALL AROUND
Patsy Phillips
Danny Royall

MOST LIKELY TO SUCCEED
Peggy Dorsett
Lupton Wood





Bobby Smith and Lupton Wood serve as "tote boys" for the photographer.



Woodie Dixon tries to think of a good excuse for not having his French homework.

Terry Ratledge puzzles over a typing problem.



Nancy Dellinger and Joan Holcomb burn the midnight oil as they work on the yearbook.



Randy Brown enjoys life in physics class.





Junior Class Officers

LARRY SHERMER, President
SHIRLEY WOOTEN, Vice-President
BRENDA TODD, Secretary
GRAY REAVIS, Treasurer

Homeroom Officers



HOMEROOM 11A

Shirley Wooten, President; Larry Shermer, Vice-President;
Janice Shermer, Secretary; Eddie Wooten, Treasurer.



HOMEROOM 11B

Gray Reavis, President; Bobby Kent, Secretary; Sylvia
Wall, Treasurer; Frances Cranford, Vice-President.



CAROLYN ABBOTT
RONNIE BROWN
FRANCES CRANFORD

SHELBY ADAMS
WINDLE BROWN
GRAY DIXON

JUDITH BOLIN
JANICE CARLTON
LARRY FRYE

JEAN BROWN
ROGER CHIPMAN
BETTY JO HARDING

PHILIP BROWN
ROBERT LEE CLINE
GRAY HELTON

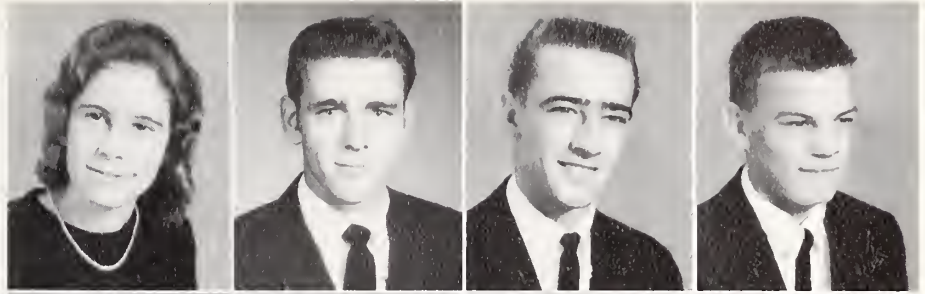
Juniors

Shelby Adams cleans the chalkboard.

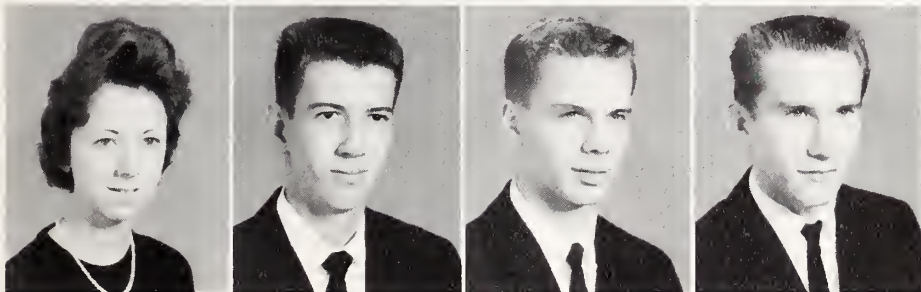
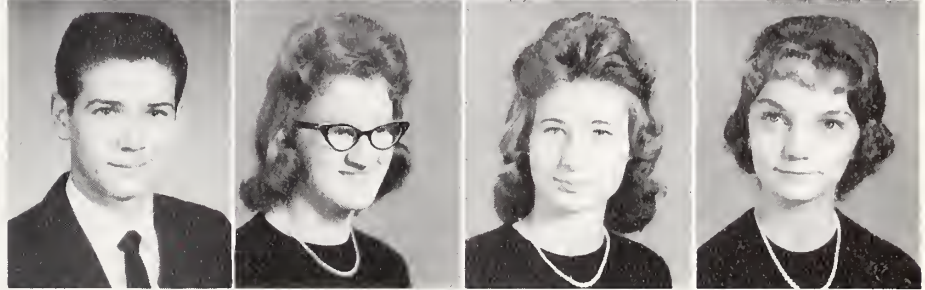


Judy Steelman and Carol Moore explore the mysteries of the duplicator.

REBA HOOTS
TOMMY HOOTS
JIMMY HUTCHENS
JERRY JESTER



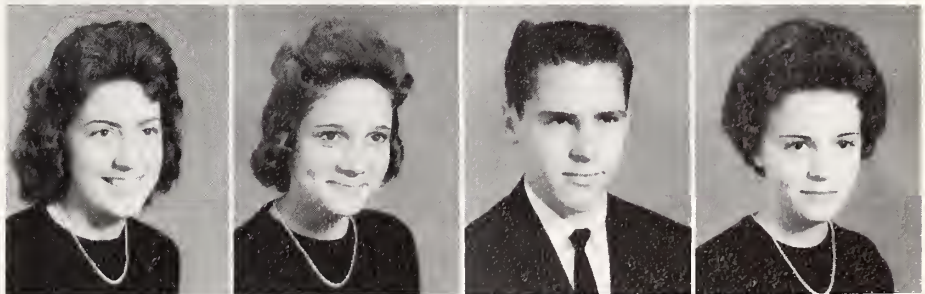
BOBBY KENT
HOPE LONG
PATTY MATTHEWS
CAROL MOORE



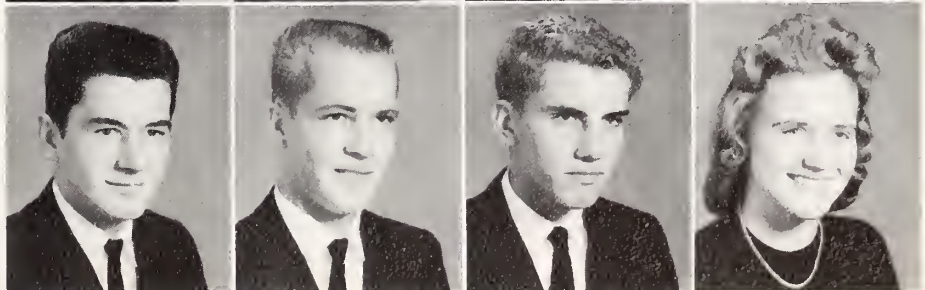
PEGGY MYERS
JERRY RATLEDGE
GRAY REAVIS, JR.
GRAY REECE

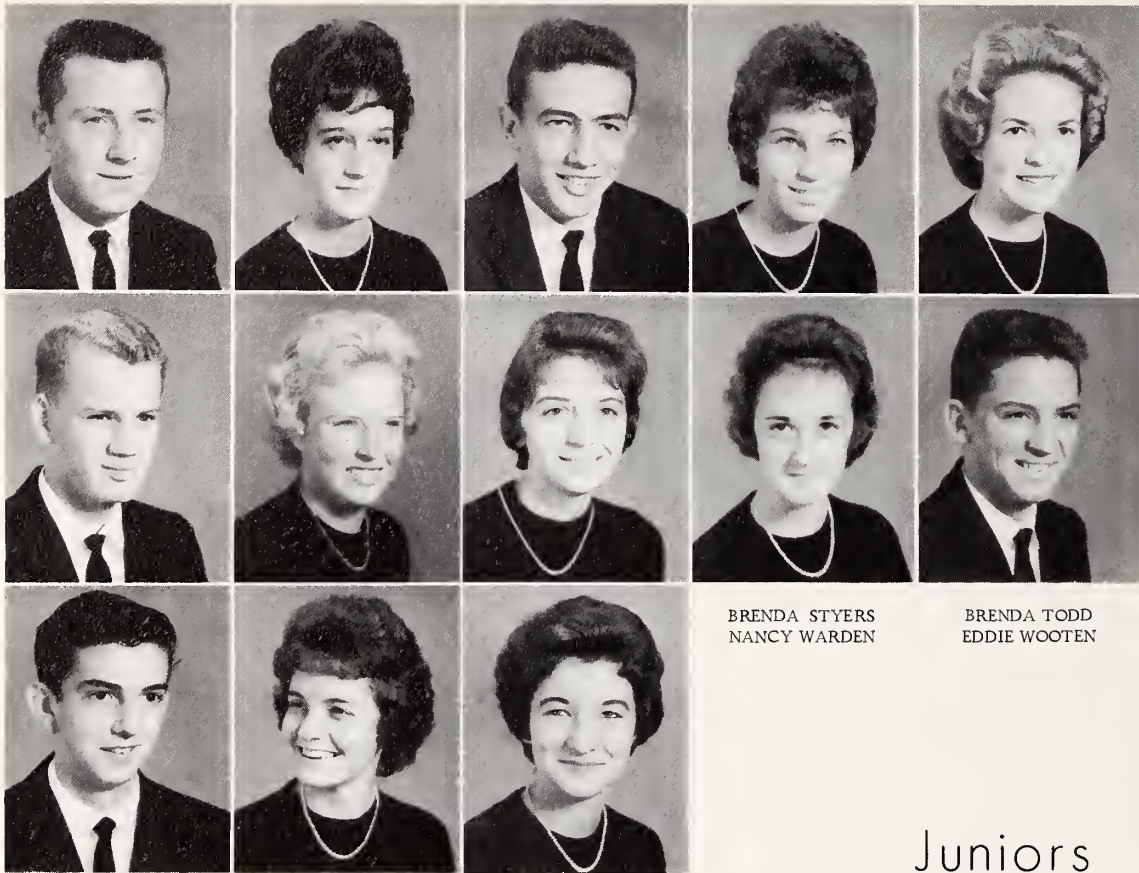
Juniors

LINDA RENEGAR
CAROL ROYAL
LARRY SHEEK
JANICE SHERMER



LARRY SHERMER
GRAY SHORE
LEN SHORE
FAYE SNOW





BRENDA STYERS
NANCY WARDEN

BRENDA TODD
EDDIE WOOTEN

EDDIE SPEAKS
HAROLD WALL
JIMMY WOOTEN

JUDY STEELMAN
SYLVIA WALL
REBECCA WOOTEN

JUNIOR STEELMAN
BEVERLY WARDEN
SHIRLEY WOOTEN

Juniors



Brenda Styers and Carol Royall prepare history assignment.

Gray Helton and Eddie Wooten work on a bulletin board.



Sophomores



NICKY ALLRED
NANCY CHURCH
DEAN DIXON

JIMMY BRAY
JANE CLEARY
JACKIE DIXON

WaDEAN BROWN
JUNIOR COE
JANICE DIXON

BONNIE CARTER
LARRY CRANFILL
FREDDY DOUB

RONNIE CARTER
KAYE DINKINS
MARY DRIVER

LENUEL CHAMBERLAIN
VICKI DINKINS
RUSSELL DRIVER

Homeroom Officers

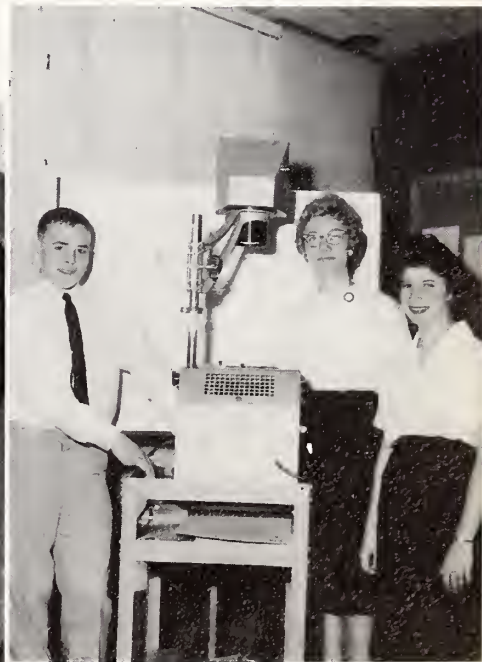
HOMEROOM 10A

Linda Hemric, Treasurer; Judy Wall, Secretary; Vicki Dinkins, President; Edith Mickles, Vice-President.



HOMEROOM 10B

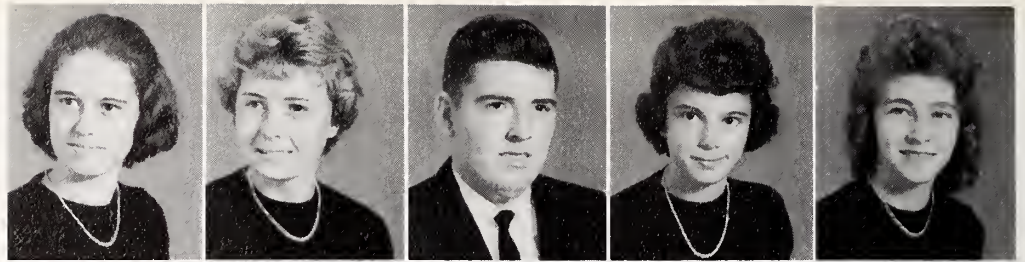
Russell Driver, Vice-President; Billy McMurray, President; Larry Cranfill, Secretary-Treasurer.



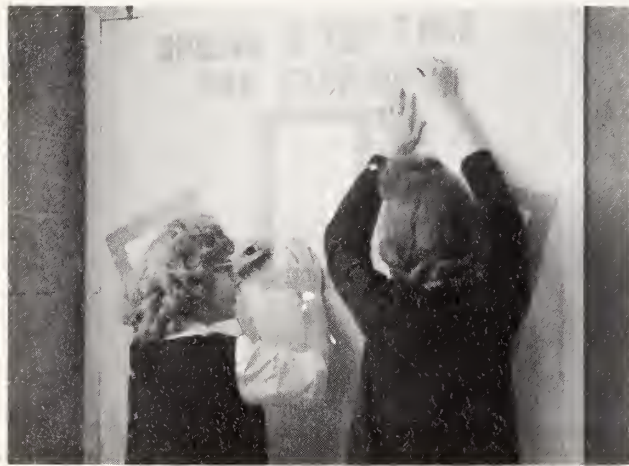
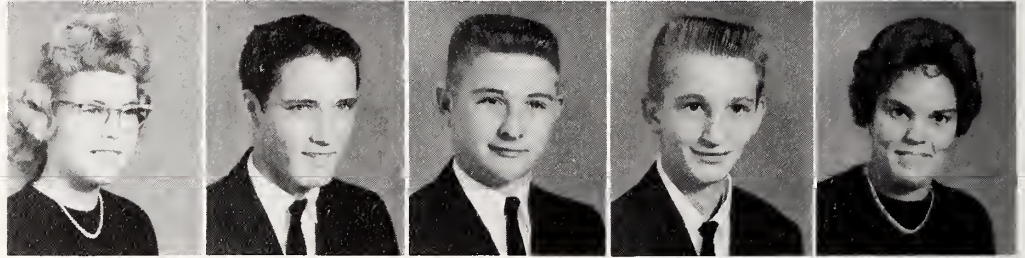
HOMEROOM 10C

Philip Shugart, Secretary; Sandra Williamson, Vice-President; Jane Cleary, Treasurer.

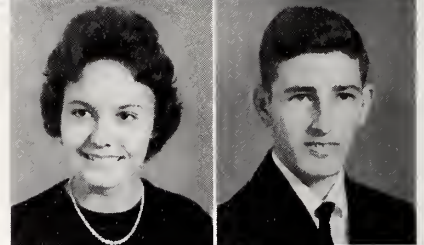
KAREN GABARD
 NANCY HARRISON
 CARLTON HARTLEY
 LINDA HEMRIC
 CLARA JO HOOTS



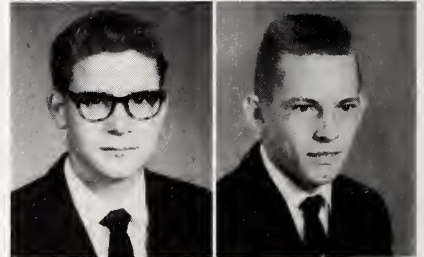
JANE HOLCOMB
 BILLY HUTCHENS
 JIMMY HUTCHENS
 LARRY HUTCHENS
 NANCY JANE HUTCHENS



RACHEL JACKSON
 GRAHAM JESTER



GARY KENT
 JUNIOR KIGER

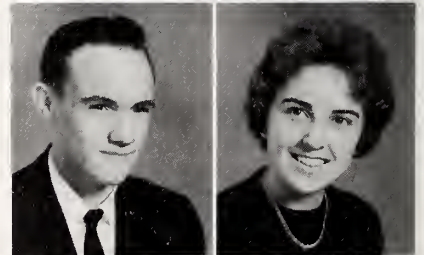


JANE LONG
 BRENDA McCOLLUM

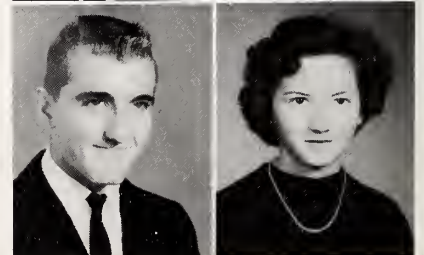


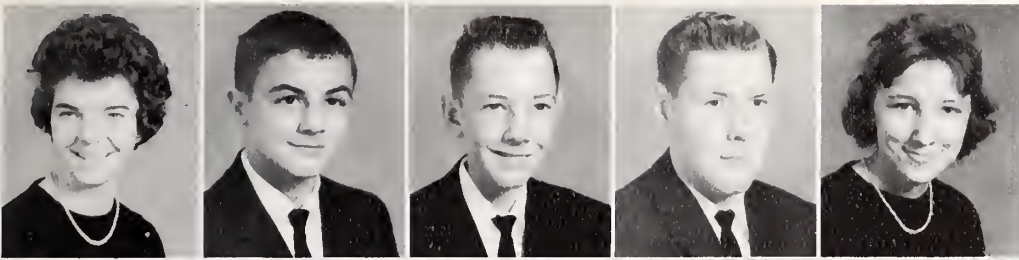
Sophomores

TOMMY McCOLLUM
 LINDA McKNIGHT



BILLY McMURRAY
 EDITH MICKLES

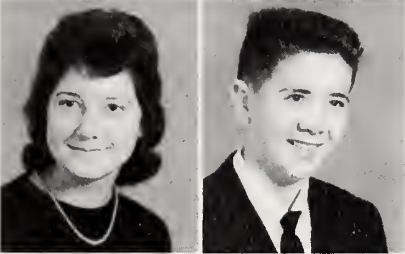




GAIL MILLER
 HAROLD MORSE
 BILLY MYERS
 NEAL PARDUE
 BRENDA KAY PENDRY



CHARLES PETREE
 BOBBY PHILLIPS
 KAY PHILLIPS
 CAROL PLOWMAN
 JO BOB POTEATE



RETA REDDING
 DONALD RUPARD



SHIRLEY SALE
 RANDALL SHEEK



WILLIAM SHEEK
 CLARA JO SHORE



PHILIP SHUGART
 JANICE, SIMMONS



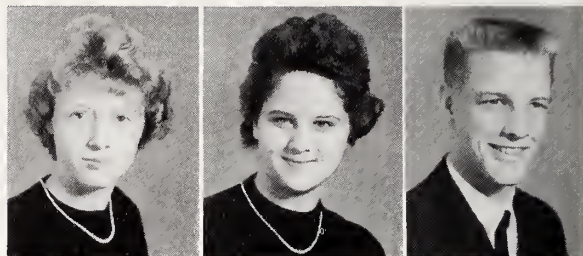
VIRGINIA SIZEMORE



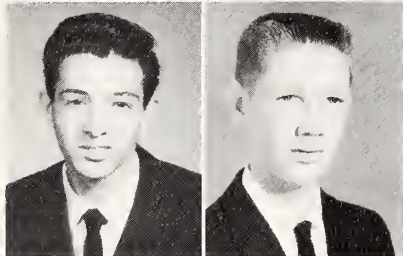
Sophomores



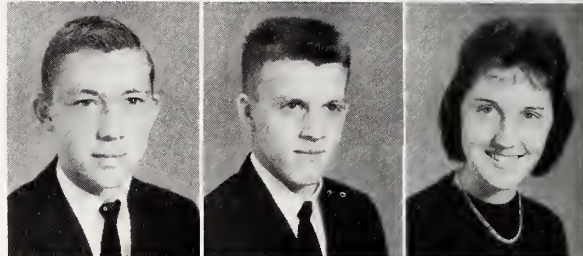
WAYNE SIZEMORE
BETTY SMITH



GRACIE SMITH
MARGARET SOUTHARD
JIMMY SPILLMAN



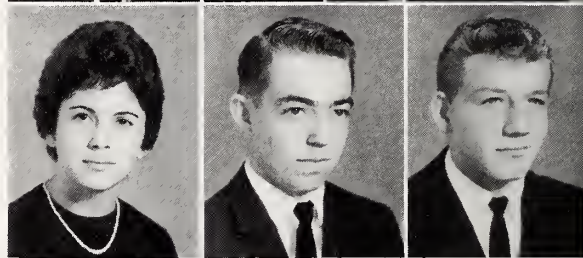
EUGENE SWIFT
CARL TODD



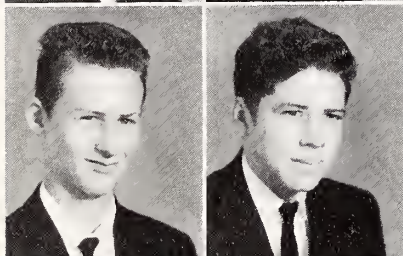
DONALD TODD
CHARLES VESTAL
RETA VESTAL



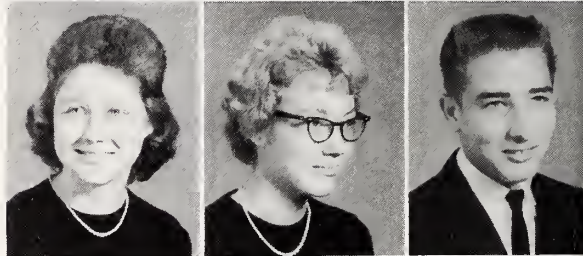
RONNIE VESTAL
POLLY WAGONER



JUDY WALL
KEITH WARDEN
LAWRENCE WARDEN



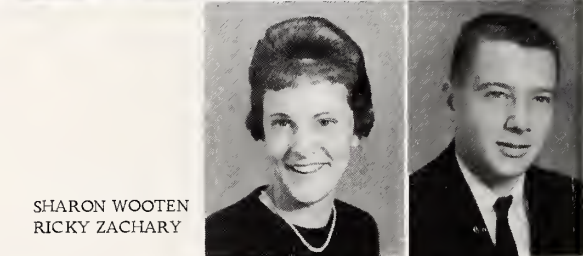
EUGENE WHITAKER
DAVID WHITE



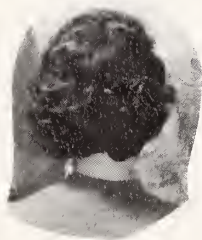
ELIZABETH WILLIAMS
SANDRA WILLIAMSON
ODELL WINFREY



AUDREY WOOTEN
JUDY WOOTEN



SHARON WOOTEN
RICKY ZACHARY





HOMEROOM 9A

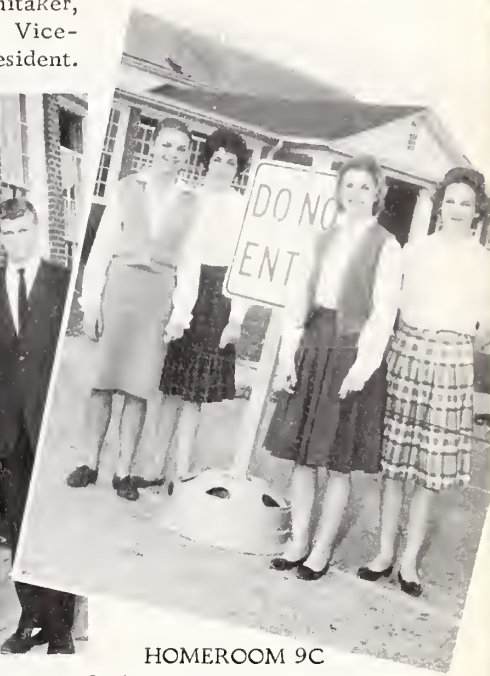
Debbie Davis, Secretary; Martha Pendry, President; Shirley Mickles, Vice-President; Patsy Hutchens, Treasurer.

HOMEROOM 9B
 Ray Smith, Secretary; Hilda Whitaker, Treasurer; Diane Plowman, Vice-President; Donald Winslow, President.



HOMEROOM 9C

Jackie Hutchens, Treasurer; Diane Booe, Vice-President; Julia Dobbins, President; Linda Wall, Secretary.

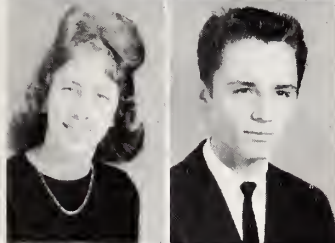


Homeroom Officers



GERALDINE ADAMS
 TIMMIE ADAMS

DICKIE BRANDON
 JANET BRANDON
 PAUL BRANDON
 CAROL BRANDON



JOY ASHLEY
 TOMMY ASHLEY

MICHAEL BRANON
 BRENDA BRANON
 J. E. BROWN
 LARRY BROWN



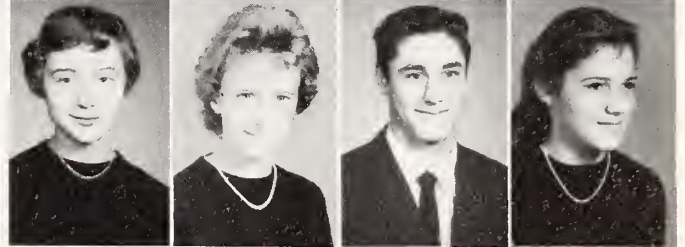
MARIE BOLIN
 DIANE BOOE

MARTHA CASSELL
 CHARLENE CAUDLE
 ELIZABETH CHAMBERLAIN
 RAY CHANDLER



NANCY BOVENDER
 BILLY BRANDON

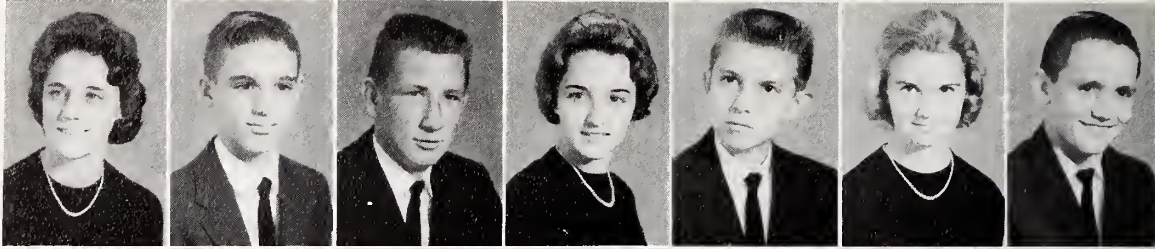
MILLY CHEEK
 CHARLES CONRAD
 MARGARET COE
 JUDY CRATER



Freshmen

Freshmen

JUDY CRATER
ALTON CROMER
JERRY CROOK
DEBBIE DAVIS
JOHN WAYNE DINKINS
JULIA DOBBINS
JAMES DRIVER



RONALD EATON
LINDA EDDLEMAN
JOHN FRYE
MILDRED GOSS
TERRY GROCE
DAVID HALL
JUDY HALL



EYVONNE HAM
BARBARA HARRISON
MARY RUTH HEMRIC
JIMMY HOLCOMB
DANNY HOOTS



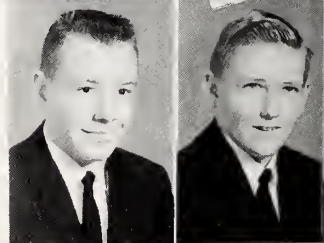
MARGARET HOWELL
ALAN HUTCHENS



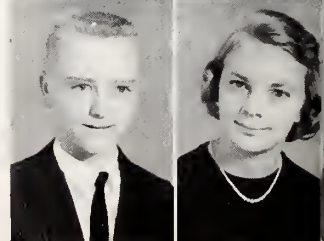
ANN HUTCHENS
BENNY HUTCHENS



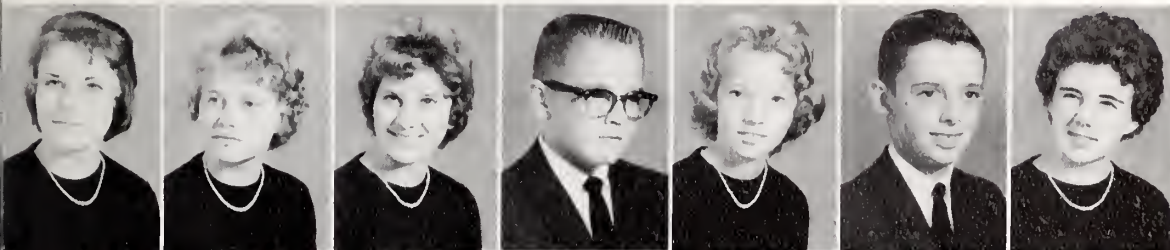
BILLY HUTCHENS
DONALD HUTCHENS



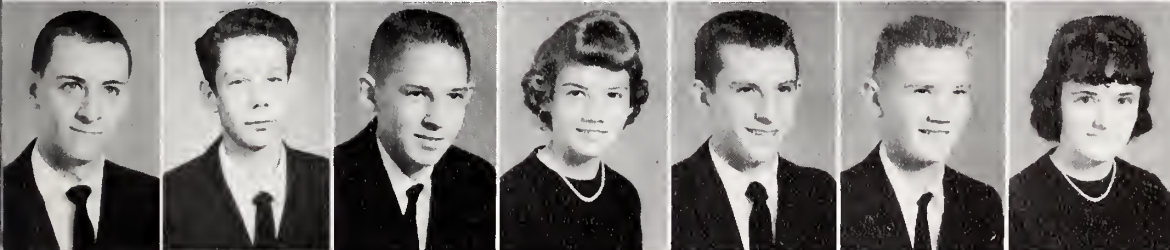
HAROLD HUTCHENS
JACKIE HUTCHENS



Freshmen



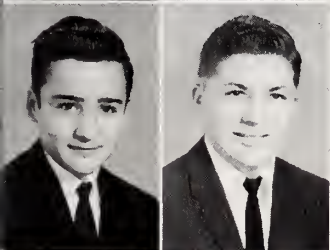
LINDA HUTCHENS
MARGARET HUTCHENS
PATSY HUTCHENS
ROBBY HUTCHENS
JUDY JESTER
MARTIN JESTER
HELEN KAY JOYNER



ANDREW MACKIE
STEVIE MAINES
RICKY McCOLLUM
SHIRLEY MICKLES
RANDY MILLS
RAY NIXON
ANNIE OAKLEY



PEGGY PARDUE
MARTHA PENDRY



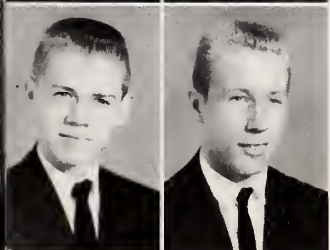
WAYNE PETREE
ROY PINNIX



DIANE PLOWMAN
RONNIE REAVIS



GLENDA REECE
JO ANN ROSE



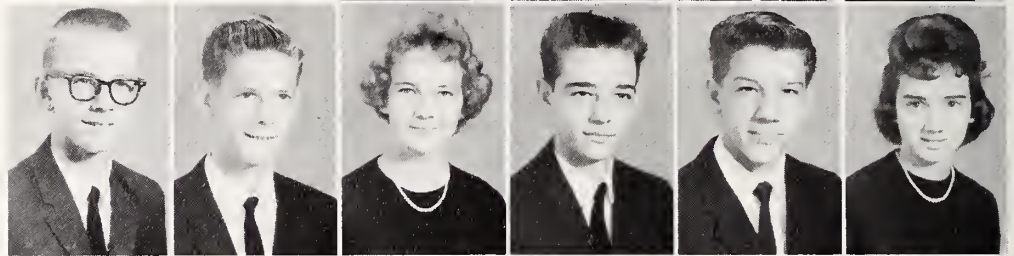
PAUL RUTLEDGE
WAYNE SIMMONS



MARSHA SMITH
 NANCY SMITH
 RAY SMITH
 ANNIE PEARL SPILLMAN



REX TODD
 CARL VESTAL
 LINDA WALL
 MITCHELL WARDEN
 WADE WARDEN
 HILDA WHITAKER



WANDA WHITE
 DELORES WILLIAMS
 JUDY WILLIAMS
 PEGGY WILLIAMS
 BRENDA WILMOTH
 DONALD WINSLOW



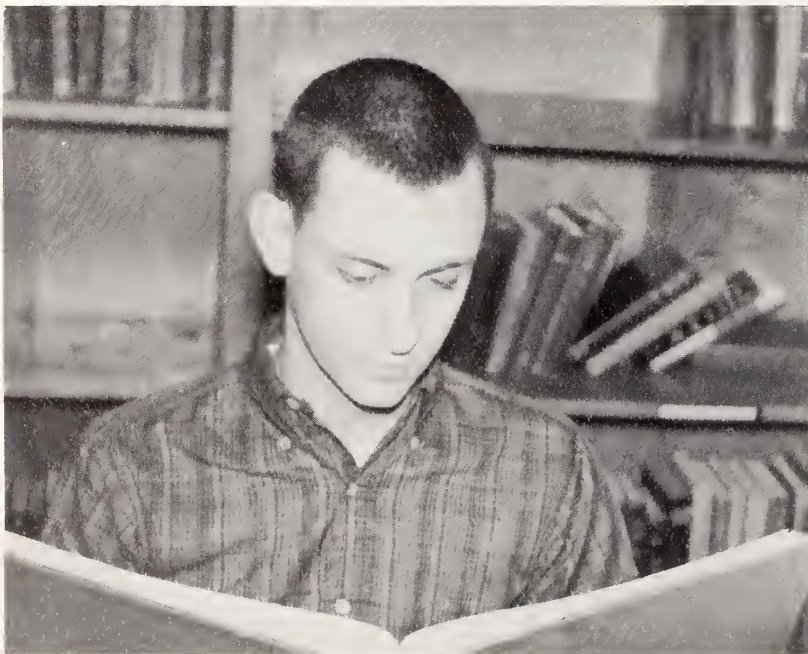
DIANE WOOD
 DELIA JO WOOTEN
 JERRIE WRIGHT
 KATHY YEAGER
 LEE ZACHARY
 PHYLLIS ZACHARY



Freshmen

Andrew Mackie hits the books.

Alan Hutchens and Yvonne Ham wear popular school styles.



Activities



Yadkinian Staff



Allen Brandon, Associate Editor; Mrs. R. P. Buchanan, Adviser; Nancy Dellinger, Editor.



Peggy Dorsett, Senior Editor; Donna Carpenter, Activities Editor; Sandra Allen, Class Editor.



Joan Holcomb, Copy Editor; Lannie Goss, Art Editor.

Lupton Wood, Photographer; Bobby Smith, Sports Editor.

Steve Zachary, Advertising Manager; Ray Madden, Circulation Manager; Samuel Burgiss, Business Manager.



Presidents' Council



Standing: Allen Brandon, President; Shirley Wooten, Vice-President; Judy Howell, Secretary; Billy McMurray, Treasurer. Sitting: Don Winslow, Julia Dobbins, Martha Pendry,

Mr. Buchanan, Sponsor; Gray Reavis, Vicki Dinkins, Sandra Williamson.



Martha Pendry, Vicki Dinkins, and Julia Dobbins take notes.



Gray Reavis makes suggestions for projects as Allen Brandon listens.



Allen Brandon presents membership certificate to Janice Shermer.



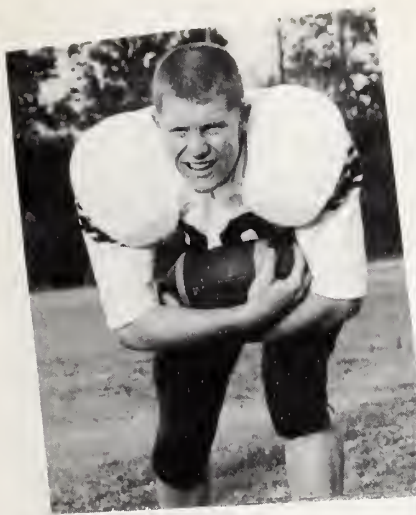
Kay Collins and Peggy Dorsett wash blinds for initiation.



First row: Mrs. Hoots, Sponsor; Lupton Wood, President; Allen Brandon, Vice-President; Nancy Dellinger, Secretary; Samuel Burgiss, Treasurer. Second row: Judy Howell,

Peggy Dorsett, Brenda Royal, Joan Holcomb, Carol Moore, Shirley Wooten, Brenda Todd. Third row: Kay Collins, Gray Reavis, Jr., Larry Shermer, Janice Shermer.

Beta Club



LUPTON WOOD
President



ROGER CARLTON
Vice-President



NANCY DELLINGER
Secretary



Monogram Club

First row: Nancy Dellinger, Linda Norman, Patsy Phillips, Kaye Dinkins, Carol Moore, Rachel Jackson, Sandra Williamson, Linda McKnight, Rita Vestal, Shirley Wooten, Donna Carpenter. Second row: Mr. Buchanan, Sponsor; Danny Royal, Terry Ratledge, Jimmy Whitaker, Gray Reavis, Woodrow Todd, Lupton Wood, Dale Willard. Third row: Roger Carlton, Johnny Vestal, Philip Brown, Roger Chipman, Ray Madden, Woodrow Dixon, Ronnie Brown, Donald Todd. Fourth row: Harrell Todd, Steve Zachary, Allen Brandon, Emmitte Winslow, Billy McMurray, Randy Brown.

STEVE ZACHARY
Reporter



DONNA CARPENTER
Treasurer



Library Club



First row: Donna Carpenter, President, Janice Shermer, Vice-President, Reta Vestal, Secretary, Carol Royal, Treasurer. Second row: Jimmy Whitaker, Dean Dixon, Judith Wooten, Gail Miller, Frances Cranford, Janice Simmons, Joan Holcomb, Linda Groce, Shelby Adams,

Danny Royal. Third row: Nancy Church, Polly Wagoner, WaDean Brown, Jane Holcomb, Jane Cleary, Juanita Morse, Linda McKnight, Patsy Phillips, Bobbie Pendry, Kay Collins, Sarah McCollum.

MRS. THOMAS PARDUE
Librarian



Library Workers: Brenda Todd, Linda McKnight, Joan Holcomb. Standing: Eddie Wooten, Judith Wooten, Patsy Phillips, Shelby Adams, Frances Cranford, Janice Simmons.



Electronics Club



First row: Billy McMurray, President; Samuel Burgiss, Vice-President; Brenda Todd, Secretary; Roger Carlton, Treasurer; Mrs. Doub, Sponsor. Second row: Donald Rupard, Philip Shugart, Robby Hutchens, Gray

Reavis, Rex Todd, Linda McKnight, Nancy Dellinger. Third row: Woodrow Todd, Ronnie Brown, John E. Vestal, Allen Brandon, Butch Todd, Nicky Allred, Larry Cranfill.

Samuel Burgiss operates the movie projector.



"It doesn't work. Call Sam!"



First row: Ham, Whitaker, V. Dinkins, Jackson, B. McCollum, K. Dinkins, D. Plowman, Miller, E. Mickles, C. Royal, J. Wall, Zachary, S. Mickles, G. Adams, Miss Hensley. Second row: C. Plowman, N. Smith, Chamberlain, B. Brown, Long, Wilmoth, P. Williams, L. Hemric, J. Hutchens, Howell, Hoots, Phillips, Jester, Dobbins, Carter. Third row: McKnight, J. Wooten, Brandon, Wood, Wright, Crater, L. Wall, Joyner, G. Smith, B. Smith, Redding, Norman, S. Wall, Davis, M. Pendry, Joan Holcomb. Fourth row: B. Royal, Snow, Styers, J. Brown, Taylor, Williamson, Vestal, S. Wooten, Collins, Dorsett, Pardue,

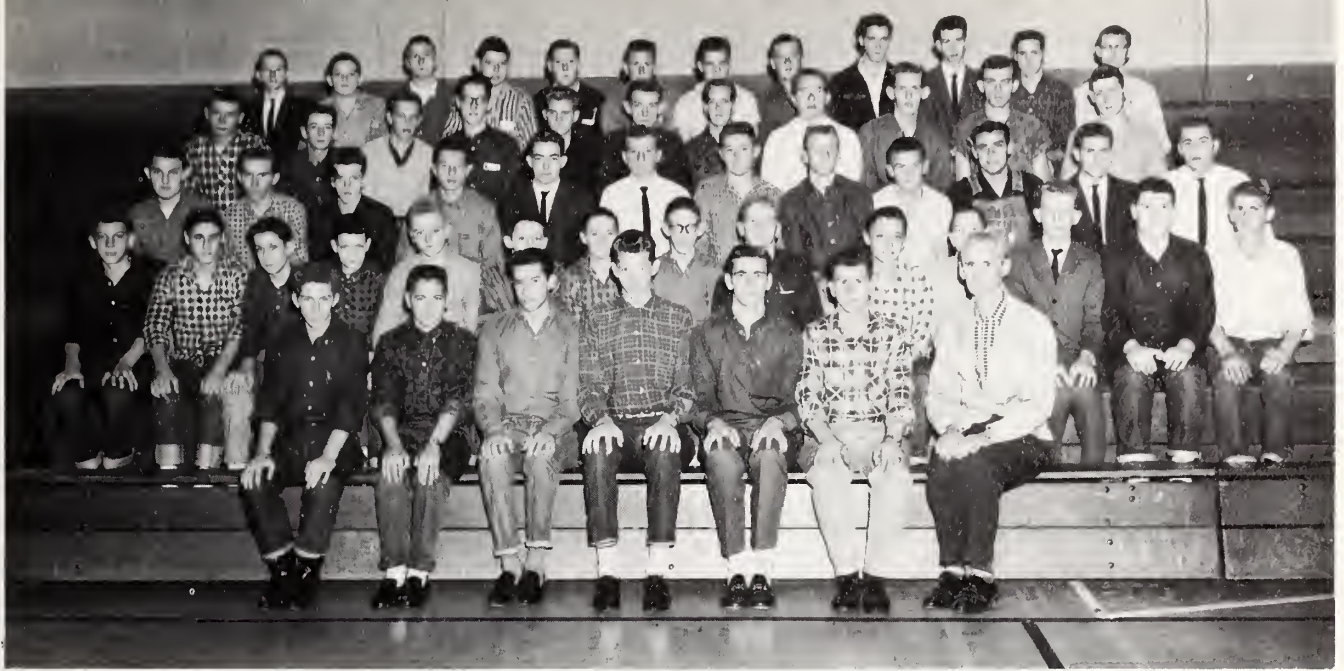
M. Hemric, Rose, Driver, Dellinger. Fifth row: Gabard, Harrison, White, Goss, Reece, D. Williams, Renegar, Cranford, J. Williams, P. Hutchens, Branon, Church, Wagoner, Booe, Carpenter. Sixth row: T. Adams, Caudle, L. Hutchens, Hall, Oakley, Bolin, D. Wooten, M. Smith, Janice Dixon, Coe, Simmons, Cheek, Todd, Moore, Carlton. Seventh row: J. Brown, S. McCollum, B. Pendry, D. Dixon, A. Wooten, Southard, Jackie Dixon, Sale, Sizemore, E. Williams, S. Wooten, Jane Holcomb, Cleary, Bovender.

FHA girls learn to bake cupcakes.

Future Homemakers of America

Nancy Dellinger, President; Joan Holcomb, Vice-President; Brenda Royal, Secretary; Linda McKnight, Treasurer; Donna Carpenter, Reporter; Carol Moore, Parliamentarian; Brenda Todd, Song Leader.





First row: James Hutchens, Noel Lee Hutchens, Buddy Bray, Grady Draughon, Tommy Hoots, Edward Hawks. Second row: Wade Warden, Odell Caudle, Kermit Maines, Charles Conrad, Harold Hutchens, Martin Jester, James Driver, Robert Lee Cline, Benny Hutchens, Billy Gray Hutchens, Billy Myers, William Sheek, Carlton Hartley, David Hutchens. Third row: Dicky Brandon, Gray Reece, Charles Vestal, Ricky Zachery, Keith Warden, Lawrence Warden.

Jimmy Hutchens, Paul Brandon, Jerry Jester, Larry Hennings, Dale Willard, Roger Carlton. Fourth row: Larry Brown, Michael Brannon, Jimmy Spillman, Larry Carter, Clarence Howell, Ray Blevins, Gray Shore, Harrell Todd, Joe Poteate, Franklin Dobbins, Freddy Dou b. Fifth row: Ray Smith, Ronnie Reavis, Allen Hutchens, Bobby Phillips, Neal Pardue, Jerry Crook, Odell Winfrey, Windle Brown, Billy Hutchens, Jerry Ratledge, Larry Sheek, J.E. Brown.

Future Farmers of America

James Hutchens, President; Grady Draughon, Vice-President; Buddy Bray, Secretary; Noel Hutchens, Treasurer; Tommy Hoots, Parliamentarian; Edward Hawks, Sentry.



Grady Draughon conducts a meeting.





Glee Club



Mrs. Gough directs a practice.



First row: Janice Shermer and Brenda Todd, Pianists. Second row: Terry Ratledge, Librarian; Peggy Dorsett, Secretary; Nancy Dellinger, President; Gray Reavis, Librarian.

Receptionists



Rachel Jackson (seated), Donna Carpenter and Sandra Allen.



Jean Brown collects the absence reports.

College Day



Gray Reavis, Brenda Todd, Junior Steelman, and Janice Shermer discuss colleges of their choice.



Joan Holcomb, Brenda Royal, and Donna Carpenter look over college material.



First row: Harrell Todd, Jimmy Whitaker, Dale Willard, Ray Madden. Second row: Samuel Burgiss, Woodrow

Dixon, Steve Hemric, Jerry Ratledge, Gray Dixon, Franklin Dobbins.

Bus Drivers

First row: Harrell Todd, President; Steve Hemric, Vice-President; Jimmy Whitaker, Secretary and Treasurer; Mr. Buchanan, Sponsor. Second row: Samuel Burgiss, Jerry Ratledge, Franklin Robbins, Ray Madden, Dale Willard, Eddie Wooten, Tommy Hoots, Grady Draughon, Woodie Dixon. Third row: Gray Reece, Noel Hutchens, William Sheek, Robert Lee Cline, Gray Dixon.

Bus Drivers Club





Ice Cream Salesmen

Billy Myers, Harrell Todd, Butch Todd
Russell Driver, Keith Warden

Custodians

Mr. and Mrs. Claude Hardy



Voluntary Workers

Samuel Burgiss
Electrician

Windle Brown and Harrell Todd
Agriculture Workers



Lunchroom Staff



Mrs. Veigh Long
Manager



Mrs. Marguerite Trivette



Mrs. Ruby Vestal



Mrs. Blanche Noble



Mrs. Minnie Styers



Mrs. Laura Branon



Mrs. Beulah Warden



Mrs. Helen Martin

Student Workers



First row: Patsy Caudle, Linda Hauser, Billy Hutchens, Barbara Dobbins, Charlotte Hutchens. Second row: Clyde Hutchens, Eula Mae Hutchens, Bobby Hutchens,

Tony Sheek, Claude Cleary, Elbert Church, Tommy Hutchens, Henry Hutchens, Jane Eller.

THE JUNIOR CLASS

presents

THE BARGAIN BRIDE
by



Jimmy Smith

Ray Reavis

Minnie Peter

Decca Wooten

Hosanna Bug

Wiley Wooten

George W.A.

Minnie Brown

Dexter Dorr

Bobby Kent

Mrs. Florabelle Fizby. Carolyn Abbott
the land lady--a gay widow

Nendy Hill. Janice Shermer
Jimmy's heart interest

Cissie Trent. Carol Moore
Doris ditto



Jean Brown
Roger Chipman
Len Shere



Mr. Yadkinville High

WOODROW TODD

Miss Yadkinville High

RACHEL JACKSON

Carnival Winners

HIGH SCHOOL QUEEN and KING
Rachel Jackson and Woodrow Todd

ELEMENTARY QUEEN and KING
Carol McCollum and Dale Clinard



Baby contest winner: Scotty Gregory with his
mother, Mrs. L. G. Gregory



Princess and Prince: Dianne Allred and Ronnie
Felts

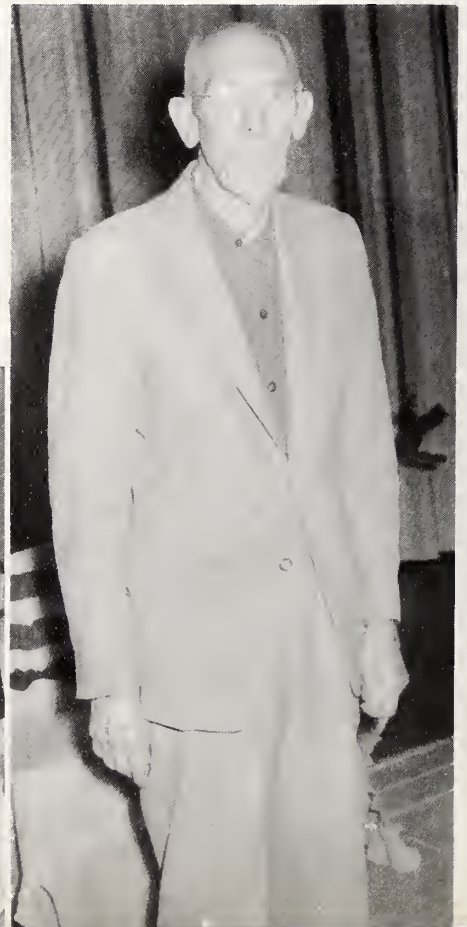


Costume winner
?????



Mr. and Mrs. W. G. McCollum and their five children: Lloyd McCollum, Grady McCollum, Eunice Kiger, Oliver McCollum, Joe McCollum.

Oldest person present: Mr. W. G. McCollum



Look at all the people!



Sports





"But we don't want to twist—we want to score!" Elizabeth Chamberlain, Carolyn Abbott, Reta Vestal, Linda

McKnight, Rachel Jackson, Donna Carpenter, Patsy Phillips, Debbie Davis.

Cheerleaders



RETA VESTAL
Assistant Chief

PATSY PHILLIPS



CAROLYN ABBOTT



ELIZABETH CHAMBERLAIN



Cheerleaders

DONNA CARPENTER
Chief



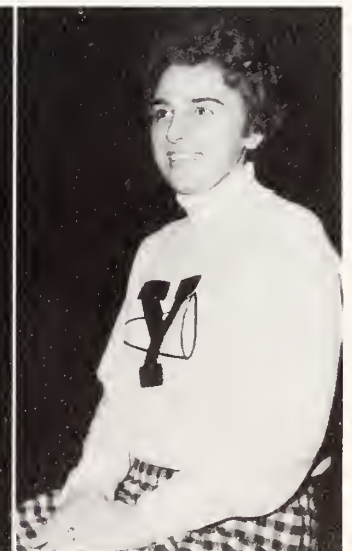
RACHEL JACKSON



DEBBIE DAVIS



LINDA McKNIGHT





DONNA CARPENTER

Homecoming Queen

The Homecoming Queen and her attendants, selected by popular vote of the football players, are featured in the Homecoming parade, presented at half-time ceremonies when the queen is crowned, and honored at an alumni reception and a dance after the game.



NANCY DELLINGER
Senior Attendant



SHIRLEY WOOTEN
Junior Attendant

Homecoming Attendants

RETA VESTAL
Sophomore Attendant



DEBBIE DAVIS
Freshman Attendant

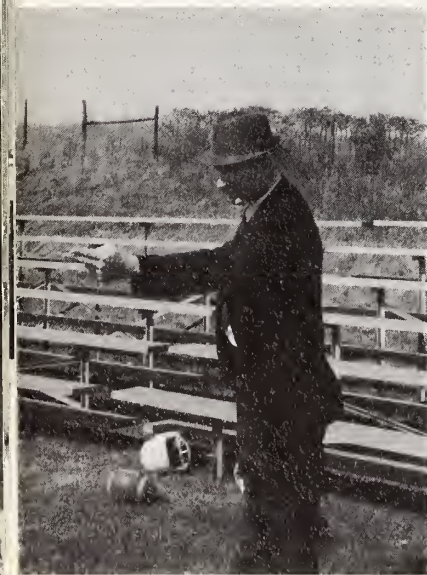


Football



First row: Woodrow Todd, Lupton Wood, Woodrow Dixon, Roger Carlton, Emmitte Winslow, Ray Madden, Randy Brown, John W. Vestal, Danny Royall. Second row: Robbie Hutchens, Gray Reavis, Billy McMurray, Larry Cranfill, Junior Kiger, Roger Chipman, Harold Wall, Randy Mills,

Ronnie Brown. Third row: Philip Shugart, Danny Hemric, Lawrence Warden, Danny Hoots, Rex Todd, Keith Warden, Dickie Brandon, Nicky Allred. Fourth row: Jimmy Boyette, Leonard Wood, and Butch Todd, Managers; Coach Nelson Best, Coach Tom Boyette.



COACH TOM BOYETTE



Butch Todd
Manager

Yadkinville Hornets completed their season with a 7-3 record. Ray Madden held a fine punting average; Ronnie Brown handled the ball on the ground.

The determined squad was steered by senior backfielders, Roger Carlton, Lupton Wood, and Woodrow Todd; and senior ends, Randy Brown and Emmitte Winslow.



Wayne Simmons, Billy Hutchens, and Allen Hutchens sell drinks and popcorn.



Max Welborn in the crow's nest announces the football game; Donald Rupard serves as spotter.

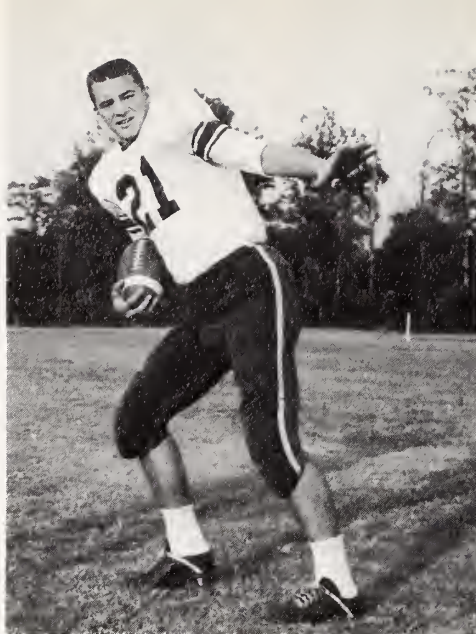
<u>Yadkinville</u>	<u>Opponent</u>	
0	Pilot Mountain	7
45	Stoneville	6
0	Jonesville	27
29	Boonville	6
12	West Yadkin	20
13	Sparta	6
13	West Wilkes	7
33	Surry Central	12
45	Walnut Cove	21
20	Courtney	0

Fans brave the cold to watch the ball-game.



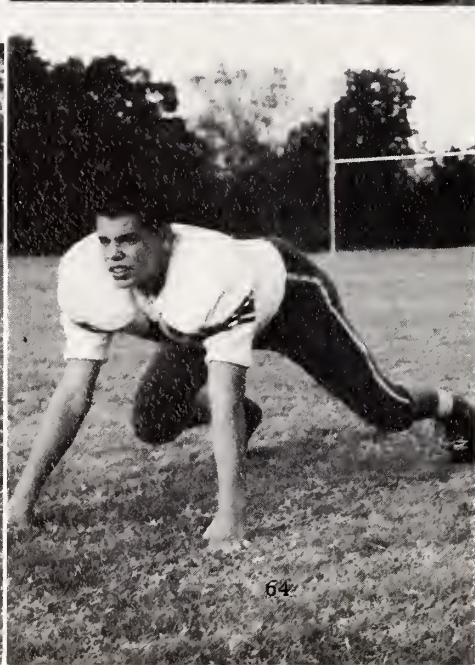
CO-CAPTAINS
 ROGER CARLTON, senior
 Halfback
 First Team, all-county

RANDY BROWN, senior
 End
 First team, all-county



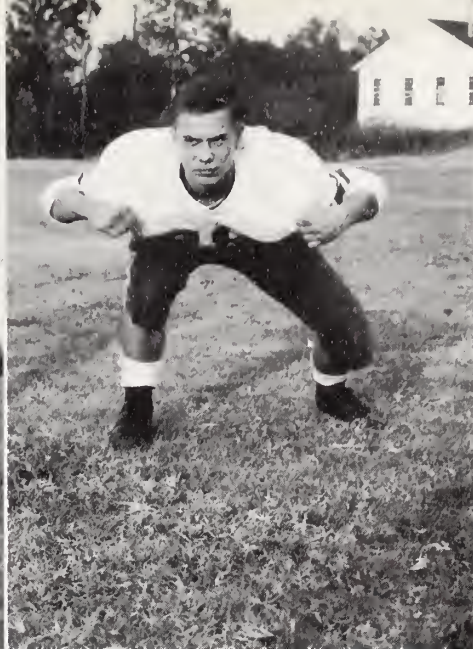
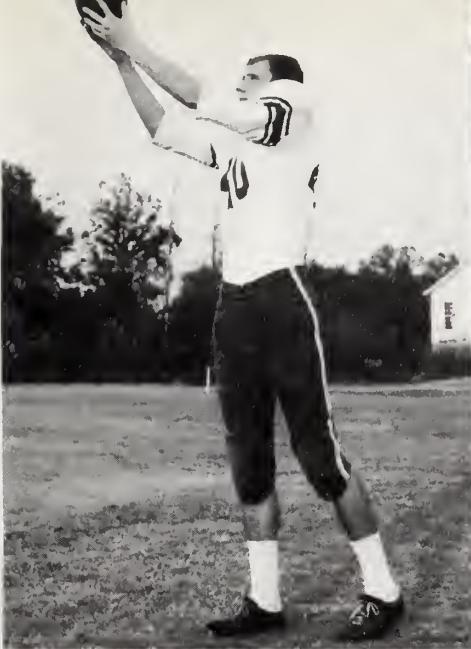
WOODROW TODD, senior
 Halfback
 Second team, all-county

RAY MADDEN, senior
 Tackle
 Second team, all-county



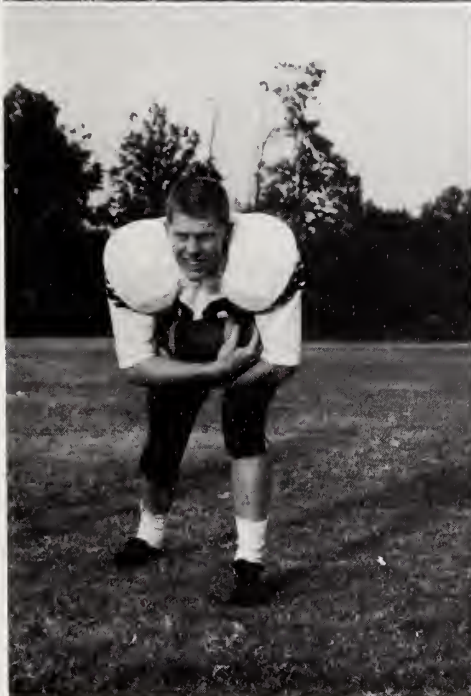
WOODROW DIXON, senior
 Tackle
 Second team, all-county

ROGER CHIPMAN, junior
 Guard



EMMITTE WINSLOW, senior
End

GRAY REAVIS, junior
Guard



LUPTON WOOD, senior
Fullback

JOHN E. VESTAL, senior
End

HAROLD WALL, junior
Center

RONNIE BROWN, junior
Quarterback





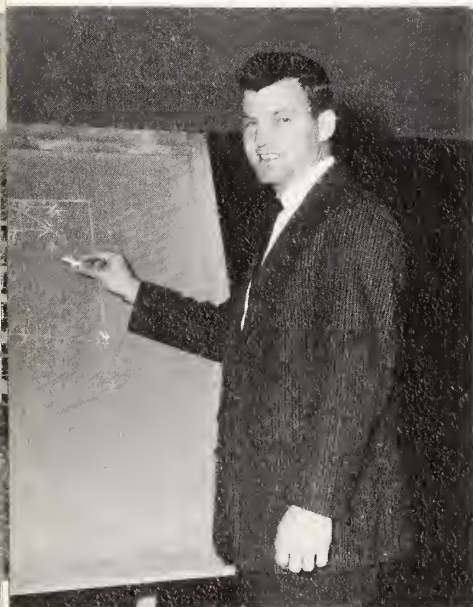


Girls' Basketball



First row: Nancy Dellinger, Captain; Coach Best. Second row: Carol Moore, Vicki Dinkins, Brenda McCollum, Janice Dixon, Shirley Wooten, Mary Driver, Peggy Pardue,

Sandra Williamson, Nancy Jane Hutchens, Faye Snow, Kaye Dinkins, Linda Hemric, Reba Hoots.



COACH NELSON BEST

Yadkinville

30
27
39
39
20
26
34
40
38
36
40
27
48
29
36
31
39
33
39

Opponent

King 63
Boonville 39
Children's Home 35
Davie County 41
Sparta 21
Davie County 47
East Surry 38
Courtney 23
East Bend 62
West Yadkin 20
Jonesville 45
East Surry 47
West Yadkin 20
Boonville 31
East Bend 53
Courtney 32
King 55
Sparta 34
Jonesville 49



NANCY DELLINGER
Senior
Captain
Guard



SHIRLEY WOOTEN
Junior
Forward



KAYE DINKINS
Sophomore
Forward



VICKI DINKINS
Sophomore
Forward

BONNIE CARTER, NANCY HARRISON, JEAN BROWN
Managers

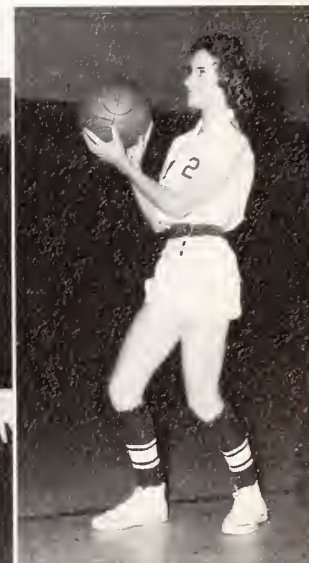


JANICE DIXON
Sophomore
Guard



CAROL MOORE
Junior
Guard

NANCY JANE HUTCHENS
Sophomore
Guard



BRENDA
McCOLLUM
Sophomore
Forward





A familiar scene before every game—girls praying the Lord's Prayer



The girls' basketball team rose from an inexperienced team to third place winner in the Yadkin County Tournament. The determined, hard-working team was led by the only starter from the previous year, Nancy Dellinger. Play of the forwards picked up noticeably throughout the year. Kaye Dinkins finished as high scorer with 343 points.





Nancy Dellinger was selected to play as alternate guard for the West team in the East-West All-Star game, and was named on the All-County and All-Northwest teams.



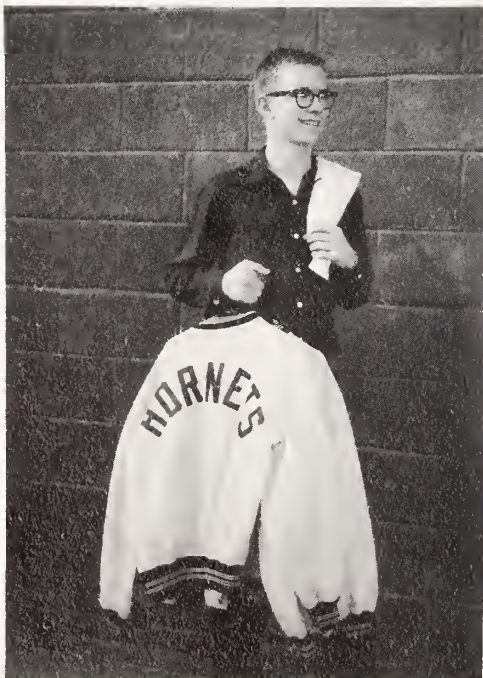
Boys' Basketball



First row: Jimmy Whitaker, Captain; Coach Best, Terry Ratledge, Captain. Second row: Roger Carlton, Philip Brown, Steve Zachary, Bobby Kent, Jerry Ratledge, Junior

Steelman, Allen Brandon, Emmitte Winslow, Roger Chipman, Woodrow Todd.

REX TODD
Manager

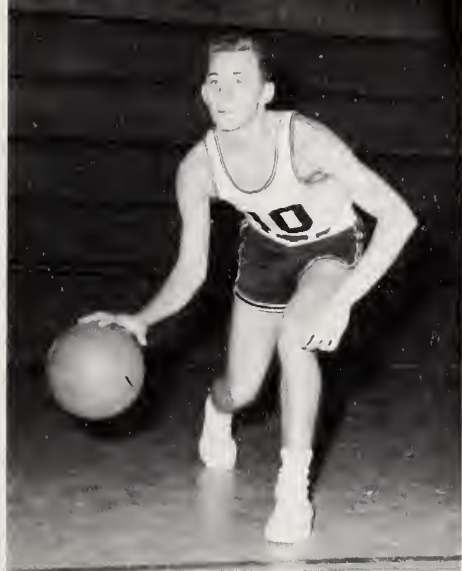


Yadkinville

39
57
47
53
50
65
59
50
57
76
53
61
76
73
74
64
50
49
63

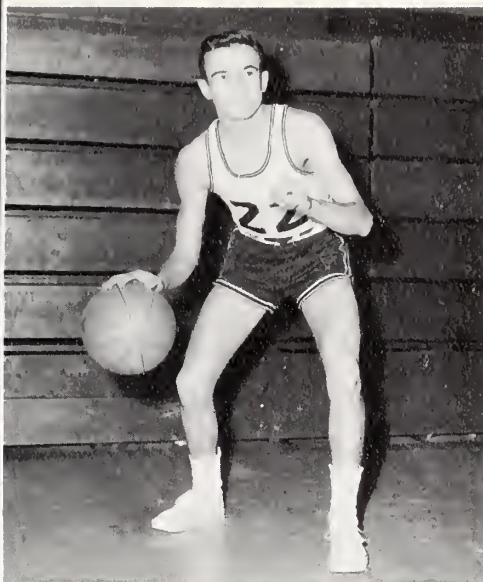
Opponent

King 42
Boonville 59
Children's Home 36
Davie County 55
Sparta 56
Davie County 72
East Surry 44
Courtney 42
East Bend 58
West Yadkin 49
Jonesville 62
East Surry 66
West Yadkin 36
Boonville 57
East Bend 66
Courtney 50
King 34
Sparta 45
Jonesville 55



JIMMY WHITAKER
Senior
Co-Captain
Guard

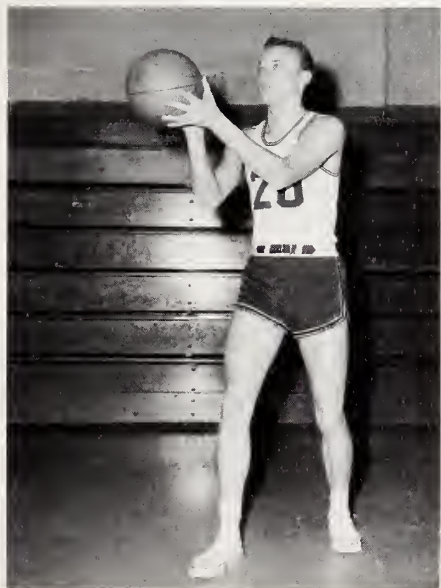
STEVE ZACHARY
Senior
Forward



TERRY RATLEDGE
Senior
Co-Captain
Guard



JUNIOR STEELMAN
Junior
Center



EMMITTE WINSLOW
Senior
Forward

ALLEN BRANDON
Senior
Forward



WOODROW TODD
Senior
Guard

ROGER CARLTON
Senior
Guard





Mr. Fred Hobson presents the Yadkin County championship trophy to Coach Nelson Best and co-captains, Terry Ratledge and Jimmy Whitaker. Jimmy Whitaker, Steve

Zachary, and Junior Steelman were named on the all-conference team.

The boys appear elated over being champions of District 7, Class A tournament.





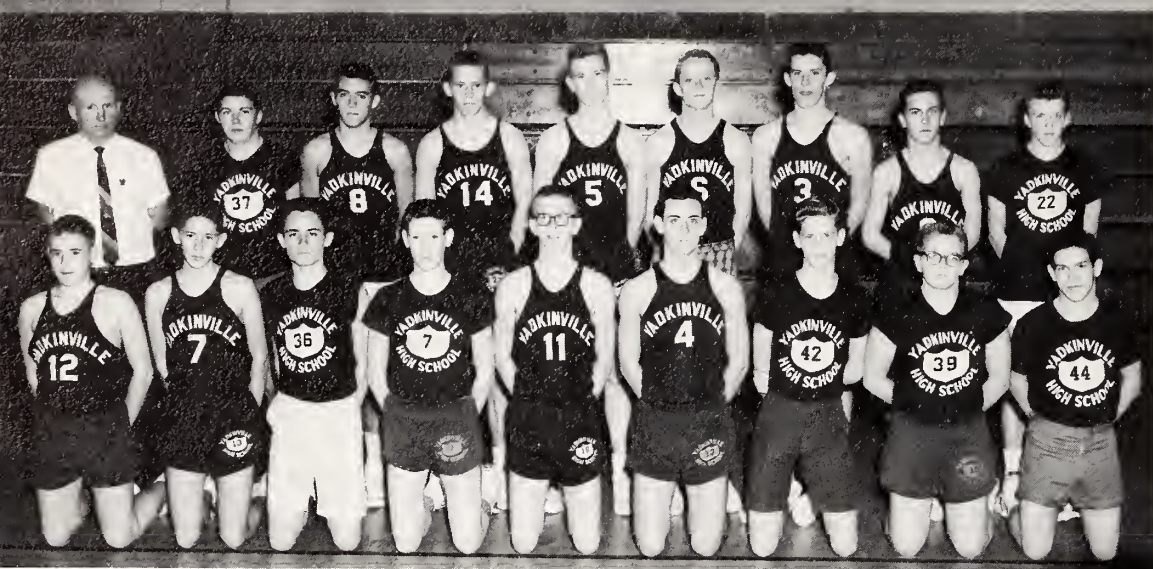
In spite of a 17-8 record, the boys' basketball team became Yadkin County and District 7 Class A champions and the first Yadkinville team to go to the state play-off. Jimmy Whitaker was top free-throw shooter with a 76 per cent average for the entire season and approximately 90 per cent for the last nine games. Steve Zachary was high scorer with 321 points for regular season play.

STEVE ZACHARY
Most Valuable Player in county tournament
Journal-Sentinel All-Northwest team



Junior Varsity Boys

First row: Philip Shugart, Ricky McCollum, Tommy Ashley, Butch Todd, Rex Todd, Andrew Mackie, Carl Vestal, Robbie Hutchens, John Frye. Second row: Coach Boyette, Roy Pinnix, Lee Zachary, Junior Kiger, Ray Nixon, Larry Cranfill, Randy Mills, Nicky Allred, Charles Vestal.



Elementary Girls' Basketball

First row: Georgia Steelman, Reda Gabard, Kay Reavis, Jane Hutchens, Mr. Martin. Second row: Elaine Howell, Debby Bryant, Kay McKnight, Judy Money, Chris Yeager, Karen Vestal. Third row: Donna Adams, Peggy Salmons, Rachel Matthews, Charlotte Hutchens, Barbara Dobbins, Susan Anderson.



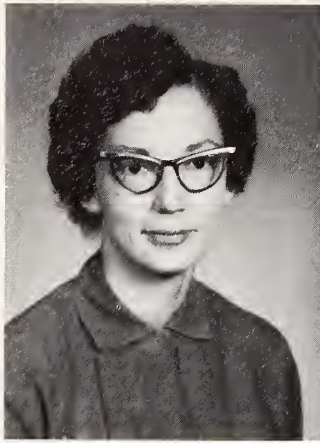
Elementary Boys' Basketball

First row: Danny Reinhardt, Ronnie Collins, Vernon Shore, David Hemric, Jimmy Hayes, David Myers, Danny Abbott, Larry Reavis, Mr. Martin. Second row: Jerry Walker, Michael Todd, Gary Williard, Tom Driver, Michael Reavis, Steve Mackie. Third row: Franklyn Hayes, Kenneth Reavis, Tommy Brown, Max Caudle, Dean Willard.



*Elementary
School*





MRS. TOM FOSTER
First Grade
Appalachian State Teachers College



MISS NORA SHORE
First Grade
Appalachian State Teachers College



MRS. JONES TODD
First Grade
Appalachian State Teachers College



MISS BETTY JO HUTCHENS
Second Grade
Appalachian State Teachers College



MISS BERTHA NORMAN
Second Grade
Catawba College



MRS. CARL SHORE
Second Grade
Woman's College of the
University of North Carolina

Elementary School Faculty



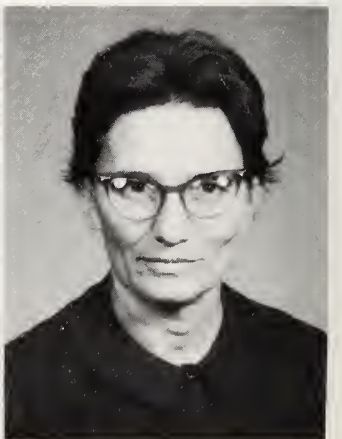
MRS. W. P. BRANDON
Third Grade
Appalachian State Teachers College



MISS BETTY JEAN HOLLAR
Third Grade
Appalachian State Teachers College



MISS MILDRED MACKIE
Third Grade
Woman's College of the
University of North Carolina



MRS. HOMER GABARD
Fourth Grade
Appalachian State Teachers College



MRS. LaVERNE SHORE
Fourth Grade
Appalachian State Teachers College



MRS. FRANK WILSON
Fourth Grade
Appalachian State Teachers College



MRS. EARL STRYKER
Fifth Grade
Appalachian State Teachers College



MISS LOU TODD
Fifth Grade
Bob Jones University



MRS. J. E. BROWN
Sixth Grade
Mars Hill College



MRS. MAX DAVIS
Sixth Grade
Woman's College of the
University of North Carolina



MRS. A. H. McLEOD
Seventh Grade
Duke University



MR. E. W. McMURRAY
Seventh Grade
Furmon University



MISS JOANN SHARPE
Seventh Grade
Woman's College of the
University of North Carolina



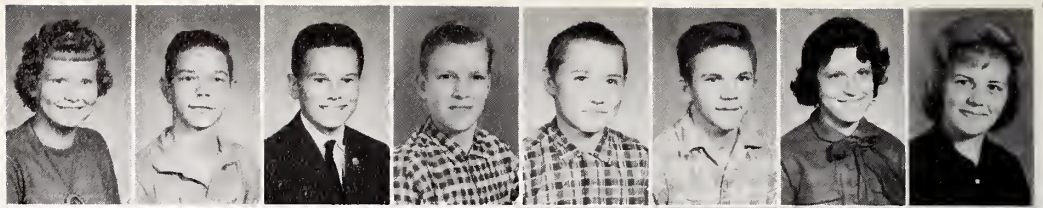
MR. CARLTON MARTIN
Eighth Grade
High Point College



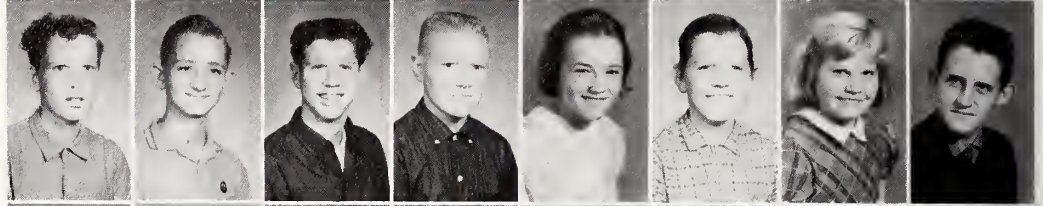
MR. LLOYD PARDUE
Eighth Grade
High Point College

MR. MARTIN'S
EIGHTH GRADE

SUSAN ANDERSON
DENNY ASHLEY
MAX CAUDLE
ELBERT CHURCH
CLAUDE CLEARY
RONNIE COLLINS
BARBARA DOBBINS
LINDA HAUSER



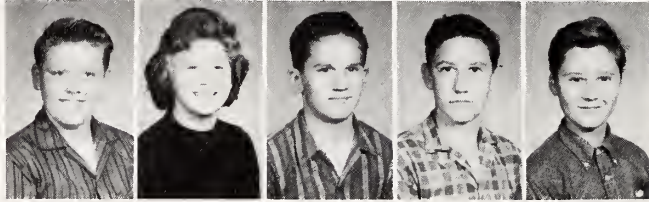
R. J. HAWKS
FRANKLIN HAYES
JIMMY HAYES
DOUGLAS HOWELL
CHARLOTTE HUTCHENS
CLYDE HUTCHENS
EULA HUTCHENS
HENRY HUTCHENS



JAMES HUTCHENS
JACKIE JESTER
RACHEL MATTHEWS
JERRY PHILLIPS
DANNY REINHARDT
TONY SHEEK
JERRY SHORE
VERNON SHORE

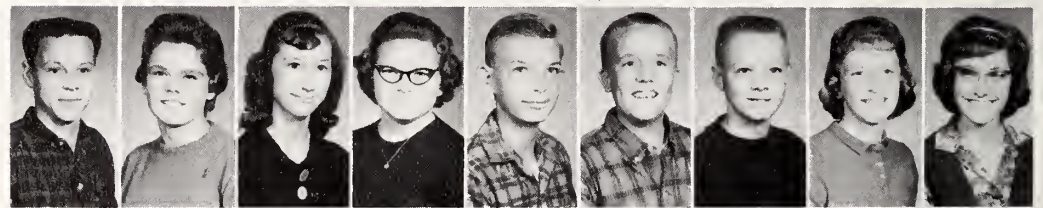


RICKY SWAIM
JANET WHITAKER
DEAN WILLARD
PAUL WRIGHT
VERNON WRIGHT



MR. PARDUE'S
EIGHTH GRADE

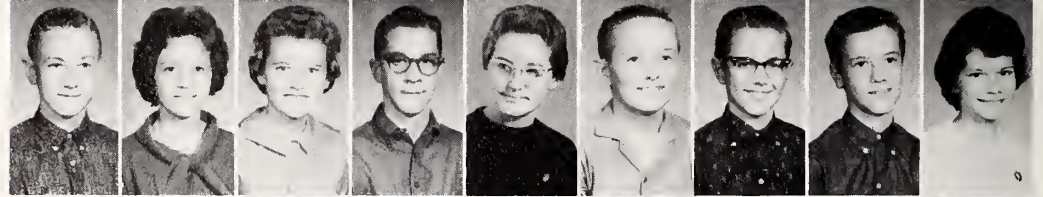
DANNY ABBOTT
DONNA ADAMS
HELEN BALL
SYLVIA BEAMER
VESTAL BLEVINS
TOMMY BRANDON
TOMMY BROWN
DEBBY BRYANT
SANDRA CARLTON



TOM DRIVER
FLOY MAE ELLER
EUGENE FULK
REDA GABARD
EVON HAWKS
DAVID HENRIC
JO ANN HOLCOMB
ELAINE HOWELL
JANE HUTCHENS



STEVE MACKIE
KAY MCKNIGHT
JUDY MONEY
DAVID MYERS
KAYE REAVIS
KENNETH REAVIS
LARRY REAVIS
MICHAEL REAVIS
PEGGY SALMONS



CAROL SAUNDERS
GEORGIA STEELMAN
MICHAEL TODD
KAREN VESTAL
JERRY WALKER
LOUISE WHITAKER
JANICE WILLIAMS
GARY WILLIARD
CHRIS YEAGER



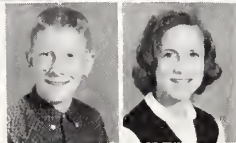


MRS. McFORD'S
SEVENTH GRADE

KATHY BRAY
LIBBY CARTER
HELEN COF
HENRY DAVIS
RONNIE CABARD
PATSY HARRISON
LIBBY HEMRIC
KENNETH HOWELL
PERRY HUDSPETH

EYVONNE HUTCHENS
PHILLIP HUTCHENS
SHELBY HUTCHENS
JIM LOGAN
PHYLLIS MASON
RICHARD MILLER
DEAN NORMAN
RENA REAVIS
BRENDA RENEGAR

CRADY ROUPE
JANICE SALMONS
BETTY SHEEK
PAMELA SHERMER
LUCILLE SNOW
CHARLES VESTAL
PATRICIA VESTAL
RITA WILLIAMS
ROY WILLIAMSON



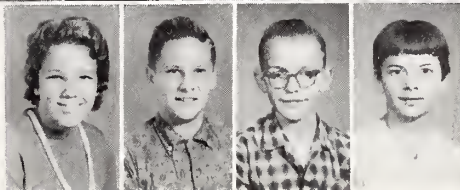
LEONARD WOOD
JENNY YEAGER



MR. McMURRAY'S
SEVENTH GRADE

RONALD ADAMS
KENNETH BRANDON
DONNIE BROWN
CLAUDE CASSTEVENS
JIMMY COLLINS
DORCAS DINKINS
DIANE ELDTRETH
GARY EVANS
DONALD HAWKS

JUDY HENNING
BETTY HOBSON
LARRY LEE HUTCHENS
PEGGY HUTCHENS
RUFUS HUTCHENS
TOMMY HUTCHENS
LINDA JESTER
JIMMY PHILLIPS
GALE SMITH



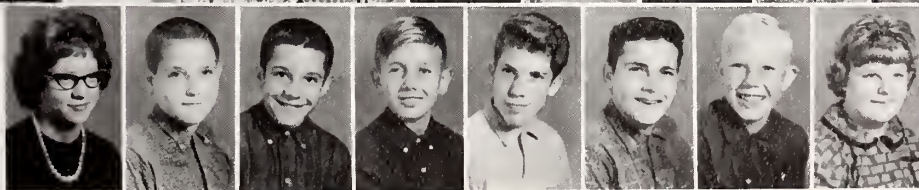
WANDA STYERS
FARREL WARDEN
DONALD WHITE
KATHY ZACHARY



MISS SHARPE'S
SEVENTH GRADE

SHARON ADAMS
TIMMY ASHLEY
PATSY CAUDILL
REX CRANFILL
STEVE DAYE
SAMMY EADS
JANE ELLER
JO ANN HAWKS
RICKY HELTON

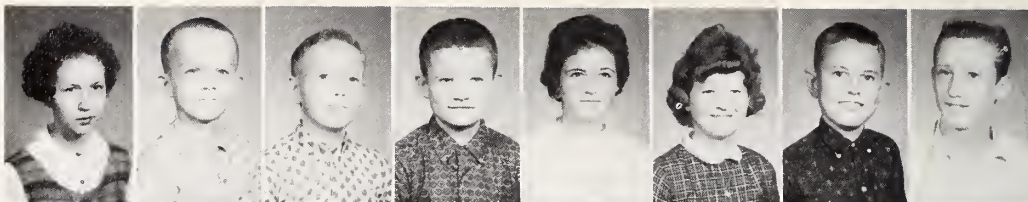
LARRY HEMRIC
RONNIE HUDSPETH
BOBBY HUTCHENS
DORIS HUTCHENS
LARRY HUTCHENS
NANCY HUTCHENS
CHRIS JOHNSON
CARL MATTHEWS
CAROL McCOLLUM



LINDA McCOLLUM
RODNEY McMURRAY
LYNN REDDING
EDDIE RUPARD
MICHAEL SEAGRAVES
LARRY SHORE
GARY WALL
JACKIE WRIGHT

MRS. BROWN'S
SIXTH GRADE

NANCY BATES
RONALD CALLOWAY
DEAN CHANDLER
DEAN CLINARD
WANNITTA COX
SALLY DIXON
WAYNE DIXON
MILES DRIVER



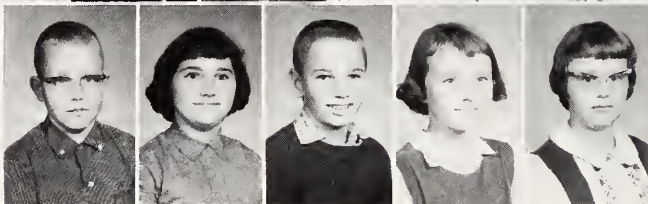
JUDY GOODIN
WILLIAM HOOD
BRENDA HUTCHENS
DAVID HUTCHENS
GLORIA JESTER
WALTER JESTER
BILLY MICKLES
RONNIE MORGAN



MARGIE OAKLEY
ROSALEE PITTS
CLINTON PRIM
MIKE REINHARDT
MICHAEL ROYAL
PEGGY SHEEK
GAIL SHORE
LAVOE SNIDER

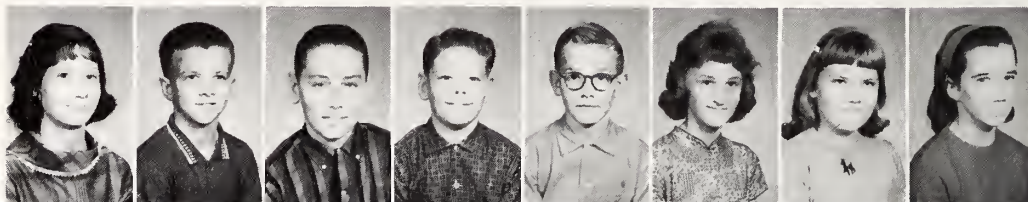


JOEL TODD
JAMIE WALL
RENNIE WALL
GLENDA WILLIAMS
JANIE WOOTEN

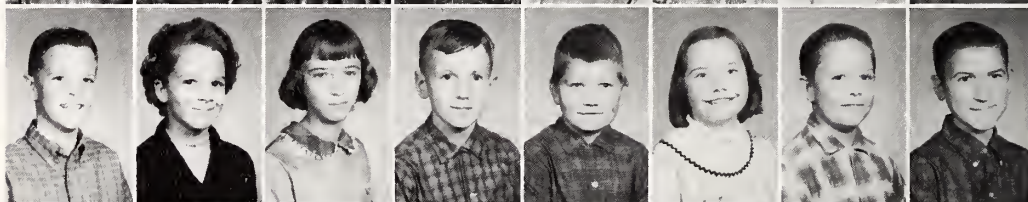


MRS. DAVIS'S
SIXTH GRADE

JANICE ASHLEY
STEVE BROWN
DENNIS CAMERON
SANFORD CHILDRESS
GARY CLINE
LUCILLE COE
BRENDA CRANFORD
ENNIS DOBBINS



PAUL EATON
NAN HOLT
CAROLYN HUTCHENS
DANNY HUTCHENS
LARRY HUTCHENS
PEGGY MCCOLLUM
DENNIS MCGEE
BOBBY MILLER



JOHNNY PARDUE
GLENDA PENDRY
WANDA PENDRY
MARCO PRIM
GARY REDDING
MARIE REYNOLDS
TOMMY ROSE
BETSY SHORE



MARTHA SIMMONS
JIMMY SWAIM
LINDA TODD
RICHARD VESTAL
CAROLYN WELBORN
JANET WILLIAMS
JIMMY WILLIAMS
ALICE WOOTEN





MRS. STRYKER'S
FIFTH GRADE

BOBBY ALLRED
HILDA ASHLEY
KENT BRANDON
HILDA BROWN
CYNTHIA CARPENTER
KENT CASSTEVENS
CAYE CHANDLER
GLENDA COOK
DAVID DOBBINS

SUSAN EADS
BETTY FRY'S
LYNN GRAHAM
LINDA HAWKS
KAREN HOLCOMB
ROGER HOLT
LINDA HOWELL
AMY HUTCHENS
LAWRENCE HUTCHENS

LINDA HUTCHENS
BONNIE KEY
STEVE McCOLLUM
JANICE PARDUE
CHARLES PARKER
JEAN REAVIS
WANDA ROSE
CRAIG RUTLEDGE
JUDY SALMONS

DAVID SHEEK
BENNY SHORE
MAYNARD SNIDER
ERIC WAGONER
MICHAEL WHITAKER
SHARRON WHITAKER
SAMMY WILLIAMS
NANCY VESTAL
FRANK ZACHARY



MISS TODD'S
FIFTH GRADE

JANET ANDERSON
SUE ASHLEY
HARVEY BATES
ROBERT BROCK
DONNIE CASSTEVENS
JESSE CAUDLE
ELAINE CHURCH
DEAN CLINE
JANE DRIVER

PHILIP ELLER
MARIE FOSTER
CAY GENTLE
JUDY HAWKS
BECKY HOLCOMB
MARGARET HOLCOMB
DOREEN HUGHES
CAROLYN HUTCHENS
JERRY HUTCHENS

MACLYN HUTCHENS
RONALD KEATON
J. C. MYERS
WANDA NORMAN
IRENE PITTS
STEVE REAVIS
BARBARA REYNOLDS
PATTY ROYALL
BOBBY SEAGRAVES

JIMMY SHORE
LARRY SLOOP
JANE SPEER
STANLEY TODD
RANDY WALKER
KATHY WARDEN
WALTER WILBANKS
WESLEY WINTERS
SUE WOOTEN

MRS. GABARD'S
FOURTH GRADE

RANDY ABBOTT
VICKIE ADAMS
GRAY BATES
BECKY BOWEN
LIBBY CAIN
DAVID CAUDIE
CLARA CHEEK
LINNIE CHURCH
JUDY CROOK



RANDY DAYE
ELAINE GENTIE
DALTHA HAM
ROY HARRISON
ROY HAUSER
CLYDE HOOTS
ADRIAN HUDSPETH
DAVIS HUTCHENS
STEVE HUTCHENS



KATHRYN JESTER
FRED MACKIE
KATHY MATTHEWS
PHYLLIS PARDUE
WILLIAM PINNIX
BECKY REAVIS
EUGENE RENEGAR
VIVIAN REYNOLDS
RICKY ROYALL

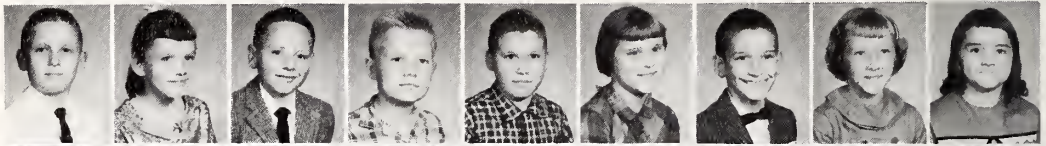


PEGGY SMITH
RICKY STEELMAN
CONNIE THOMPSON
GLENDA VESTAL
VIVIAN WARDEN
GARY WHITAKER
MICHAEL WOOTEN



MRS. SHORE'S
FOURTH GRADE

WAYNE ADAMS
JENNIFER ALLGOOD
JIMMY BOYETTE
RONNIE BROWN
RAY CASSTEVENS
MARIE CAUDIE
ALVIS CLINE
PAMELA CRANFILL
KAY FALLIN



PAT GREENE
PAULA HAIRE
JOHN HOBSON
JEAN HOLCOMB
LARRY HUDSPETH
NEAL HUTCHENS
PATSY HUTCHENS
WAYNE LADD
CATHY MATHIS



JOEL MATHIS
NICKY McKNIGHT
DAVIS LEE MORGAN
DONNA PARDUE
SUSAN RAY
TIMMY REDDING
RICHARD ROYAL
PATSY SHEEK
CATHY SMITH

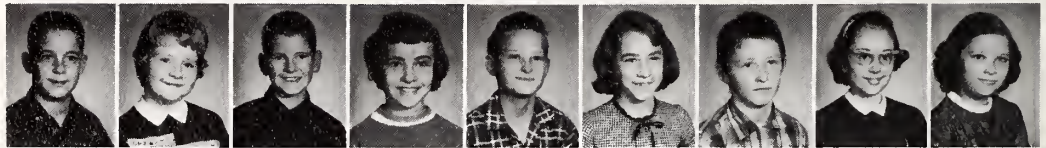


KENNETH SNIDER
JANET STYERS
MICHAEL VESTAL
KATHY WALL
RONALD WISHON
PATSY WINSLOW
AMY WOOD

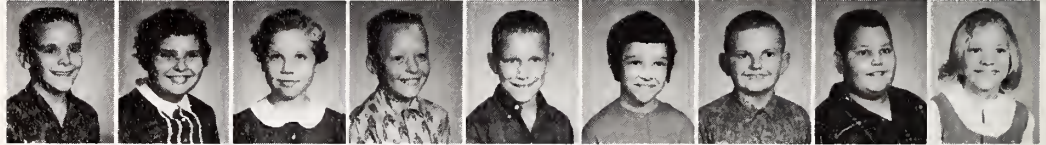


MRS. WILSON'S
FOURTH GRADE

KENNETH ADAMS
PAMELA ALLEN
DAVID BOLIN
GILDA BROWN
JAMES CASSTEVENS
RAY CASSTEVENS
JOE CLEARY
KATHE-JO CONAWAY
ANN DINKINS



GARY DIXON
MATOAKA GENTRY
VICKIE HARRIS
GARY HIGGS
BOBBY HUDSPETH
JANICE HUTCHENS
JIMMY HUTCHENS
JOHNNY HUTCHENS
PEGGY JESTER



DONNA JO MALCOLM
MARIAN LEE MARTIN
DEBBIE MILLER
JOHNNY MILLER
ANGELIA PETREE
MONROE REECE
JANICE REYNOLDS
DAVID ROYALL
RICHARD SHEEK



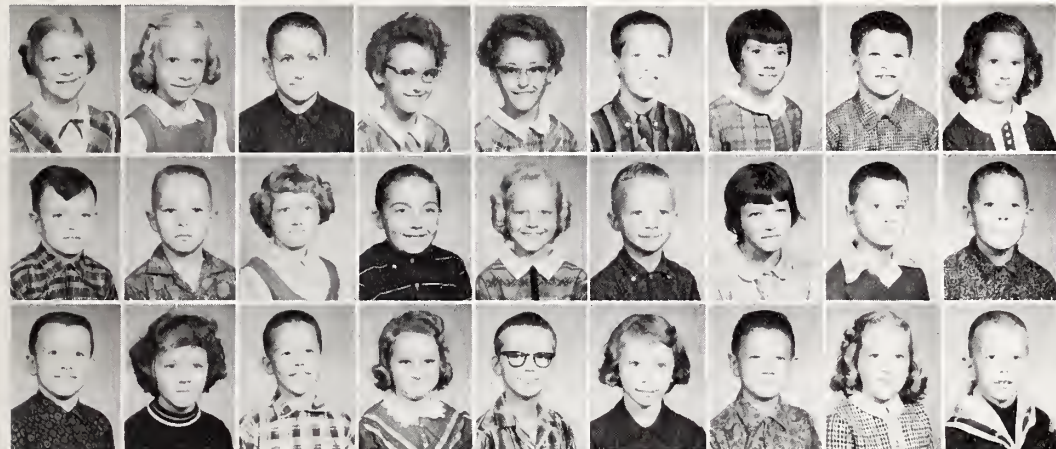
TIMMY KAY SIZEMORE
WANDA SMITH
KAREN UNDERWOOD
DENNIS VESTAL
BEVERLY WILKINS
JAMES WINTERS
JOE YEAGER





MRS. BRANDON'S
THIRD GRADE

- JUDY ANDERSON
JO ELLA BRANDON
ROBERT BURCHETTE
SUZANNE CAMERON
DENISE CASSTEVENS
RANDY GRANFILL
DONNA DAVIS
STEVE FOSTER
J. W. GREGORY
- DIANE HARDY
RICKY HAYES
LEWIS HUGHES
DIANNE HUTCHENS
DONNA HUTCHENS
JOHNNY HUTCHENS
GAIL MAINES
JIMMY MATTHEWS
BOBBY MICKLES
- DENNY MICKLES
PATRICIA MILLS
MICHAEL MOORE
DAVID REYNOLDS
JUNE ROUPE
DANNY SHORE
DONALD WARREN
ELDON WILLIAMS
PHYLLIS WILLIAMSON
STEVE WOOTEN



MISS HOLLAR'S
THIRD GRADE

- DIANNE ADAMS
KATHY BATES
KEITH BRANON
DARLENE BROCK
FRANCES BROCK
GORDON CASSTEVENS
EARLENE COE
MICHAEL CROCK
CARLOTTA GABARD
- BILLY GOSS
LEE HARRISON
BRENDA HENNING
GARRY HOOTS
ANN HUTCHENS
KIM HUTCHENS
LINDA HUTCHENS
DELANE LONG
DENNIS McCOLLUM
- KENNETH MILLER
CATHEY OAKLEY
LYNN REAVIS
CATHY RIGGANS
RICHARD ROYAL
BRENDA SALMONS
LEE SIZEMORE
DIANNE TODD
NEIL WELBORN



RONALD WILLIAMS
SHEILA WINTERS



MRS. MACKIE'S
THIRD GRADE

- EUNICE ADAMS
DOLLY BOLIN
JANICE BROWN
TOMMY BROWN
CATHY CASH
TODD CASSTEVENS
BARBARA CLEARY
REGINA COLLINS
DAVID DOSS
- LAWRENCE GREENE
JUDY HAUSER
MICHAEL HAWKS
PAT HOLCOMB
DENNIS HOWELL
JOE HUTCHENS
SHIRLEY HUTCHENS
DELANE MARTIN
KAY McCOLLUM
- WADE McCOLLUM
DONNA PARKER
DWIGHT PITTS
ROBERT REAVIS
JERRY REECE
NELL ROSE
LOU ANN SCISM
STEVE SHEEK
LINNY STEELMAN



CRYSTAL WARREN
RAYMOND WHITAKER
KENNETH WOOTEN

MISS HUTCHENS'
SECOND GRADE

CHARLES ASHLEY
VICKIE BAITY
DAVID BOWDEN
ANN BROOKS
DONNIE BROWN
BETTY JO COE
RICKY CRANFILL
SANDRA HAIRE
KIM HARRISON

JAN HOLCOMB
EUGENE HOLT
LYNN HUTCHENS
WILLIAM JAMES
SUSAN MASON
SARAH McKNIGHT
HOLLY NIXON
RICHARD OBENSHAIN
SHERRIE RAY

KENNETH REAVIS
LeROY RENEGAR
GAIL RUTLEDGE
BEATTIE SIZEMORE
GARY SMITH
KATHY SPEER
MARK TODD
DAVID TRIVETTE
DIANE WHITE



KEITH WHITE
SANDRA WILMOTH
REX WOOD

MISS NORMAN'S
SECOND GRADE

DIANE ALLRED
SALLY BEST
DONALD BOLIN
CHARLES BROWN
CATHY CAIN
DANNY CASSTEVENS
MARY LOU CASSTEVENS
BETTY CROOK
LONNIE EDWARDS, JR.

KATHY GOSS
GAIL HILL
RANDY HUGHES
CAROL HUTCHENS
ROGER HUTCHENS
ROY LANE
RETA LYNCH
MARY MILLER
VICKY PARDUE

LeROY REECE
JANE ROUPE
ELAINE SHORE
STEVEN SPILLMAN
JEFFREY THOMPSON
PAUL WILLIAMS, JR.
BRENDA WINTERS
LISA WISHON
NEAL WRIGHT



MRS. SHORE'S
SECOND GRADE

KENNETH BOLIN
DIANN BOYETTE
CONRAD BROWN, JR.
DANNY BROWN
SHIRLEY CASSTEVENS
LARRY CHEEK
KATHI JO DIXON
BRENDA FULK
WANDA HALL

DANNY HAWKS
ELAINE HUDSPETH
DELMA HUTCHENS
ANN JESTER
ARTHUR LAWSON
ALISON McGEE
CRAIG MILLER
IRENE OAKLEY
DAVID PARDUE

MARCIA REYNOLDS
HOUSTON SHORE
SUSAN SIMMONS
PATRICIA SPEER
WILLIAM TODD
JERRY WHITAKER
TERRY WHITAKER
DEBRA WILLIAMS
TIMOTHY WILLIAMS



BEN YEAGER



MRS. FOSTER'S
FIRST GRADE

EDWARD ALLEN
THELMA BATES
MICHAEL BLEVINS
BETTY JEAN BRANDON
W. J. CASSTEVENS
LINDA CHANDLER
JIMMY COE
BETTY ANN DIXON
JACKIE DRIVER

RONNIE FELTS
KIM HEFFNER
CYNDI HOOTS
JUDY HUDSON
SHERRY HUTCHENS
TERRY HUTCHENS
CHRIS MATHIS
SUSAN MCKNIGHT
SAMMY PARDUE

EARL PARKER
DEAN REAVIS
CATHY SELLERS
ARNOLD SHORE
ROBIN SPEAKS
SANDRA SWAIM
BOBBY TODD
DENNIS TRIVETTE
JAMES WILLARD
BABS WOOTEN



MISS SHORE'S
FIRST GRADE

STEPHEN ALLGOOD
GLENDA BOOE
DEBBY CAIN
R. C. CARTER
WADE CRANFILL
VANESSA ELDRÉTH
JIMMY GENTLE
BILLY GODFREY
DONNA HANES

RANDY HOLCOMB
SUSAN HUDSPETH
BOBBY HUTCHENS
DARLENE JESTER
CINDY LONG
GWYNN LONG
JEFFREY MATTHEWS
LINDA MICKLES
DRUSILLA PETREE

SAMMY REAVIS
JEFFREY REINHARDT
NEAL SCISM
CHRISTINE SHEEK
DEBBY SHORE
DENNIS SIZEMORE
MYRA SHILLMAN
KATHY SWAIM
EDDIE WILLIAMS



GLENDA WILLIAMS



MRS. TODD'S
FIRST GRADE

CARLA ADAMS
DAVID BATES
JOY BOWDEN
RODNEY CASSTEVENS
BRAD DINKINS
BOBBY DRIVER
CHARLES HAIRE
ROBERT HARDING
DIANE HARDY

BOBBY GRAY HOOTS, JR.
DAVID HUTCHENS
DEBBY HUTCHENS
GARY HUTCHENS
JERRY LADD
JIMMY LAMSON
CHRISTINE LINVILLE
ELIZABETH LINVILLE
BOBBY JOE LYNCH

LOREN McMURRAY
MILTON PINNIX
CYNTHIA REAVIS
DALE REYNOLDS
MICHAEL SPEER
FRANCES STEWART
JOAN SUMMERS
STEVE WAGONER
JANET WARDEN



TERRY WILKINS
LARRY WISHON

Elementary School Chorus



The elementary school chorus is shown with their director, Mrs. LaVerne Shore.

Presidents' Council



Mr. Buchanan, Sponsor, Jimmy Phillips, Jerry Lee Shore, Carol McCollum, Jenny Yeager, Steve Mackie.



Mr. Pardue, Gary Williard, Tom Driver, Michael Reavis, Larry Reavis, Tommy Brandon.

Elementary Ice Cream Salesmen

Safety Patrol

First row: Ronnie Gabard, Lieutenant; Michael Todd, Captain. Second row: Mr. Pardue, Charles Vestal, Grady Roupe, Perry Hudspeth, Roy Williamson, Rodney McMurray, Leonard Wood, Henry Davis, Chris Johnson.

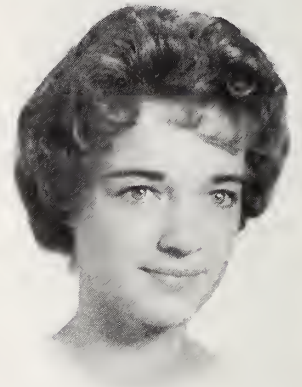
Third row: Dennis McGee, Steve McCollum, Joel Todd, Dennis Cameron, Johnny Pardue, Sammy Williams, Charles Parker, Bobby Seagraves.



1962 Highlights



Andrew Mackie and Rex Todd receive the "God and Country" award in scouting.



Nancy Dellinger reigns as Yadkin County Dairy Princess.



Joan Holcomb receives the Betty Crocker Homemaking Award.



Advertisements



ELKIN-JONESVILLE BUILDING & LOAN ASSOCIATION



Savings

Loans

ELKIN

JIM'S GRILL

Yadkinville



BANK OF YADKIN

Deposits Insured Up To
\$10,000 for Each Depositor
Now in Our 57th Year of Operation



We Welcome the Opportunity to Serve Your

Banking Needs

Yadkinville

dine
dance, or
romance...

she's still right in her clothes
from ..

Davis

Downtown Thruway

Winston-Salem, N.C.

JESSE G. BOWEN MUSIC COMPANY

High Grade Pianos
Hammond Organs

231 West Fifth Street
Winston-Salem

K & W

CAFETERIA

Your Kind of an Eating Place

422 N. CHERRY ST.
WINSTON-SALEM, N. C.



WARDEN

"66" & TIRE SHOP

GASOLINE - OIL - TIRE RECAPPING
REPAIRING - PICK-UP & DELIVERY

TELEPHONE 2111

YADKINVILLE, N. C.

TRACTORS



IMPLEMENTS

TODD IMPLEMENT CO.

Phone
3641

YADKINVILLE, N. C.

Enjoy the Pick of the Pictures

At the

YADKINVILLE DRIVE-IN

Save the Price of a Baby Sitter

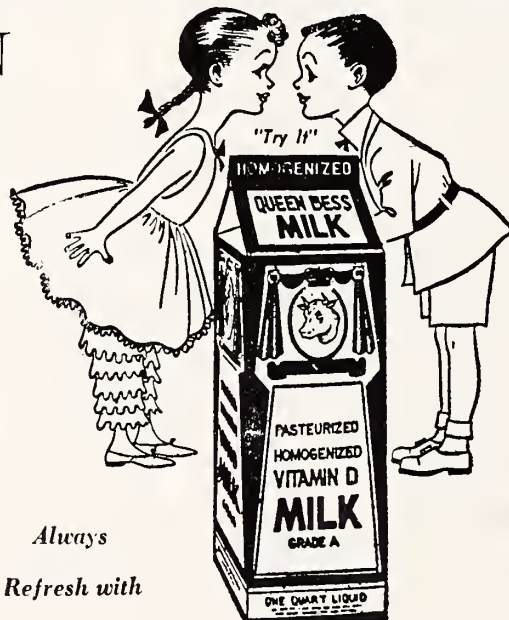
Home Owned

Home Operated

IT'S A SWEET IDEA

YADKIN

VALLEY
DAIRY



Always

Refresh with

QUEEN BESS MILK

YADKIN CLEANERS

Send you laundry
when you send your cleaning
Complete Service
One Call Does It All

Phone
679-3331 Yadkinville

MILLS STUDIO

Portrait and Commercial
Photography
Yadkinville
Telephone Day 679-3561
Night 679-2841
In Mocksville Every Thursday
Telephone MEdford 4-2870

W. N. IRELAND INSURANCE AGENCY

Insurance of All Kinds

George M. Holmes Paul Brandon
Phone 679-4561 Yadkinville

YADKIN ESSO

Wash - Polish - Lubrication
Tires - Tubes - Accessories
Groce Brothers
Proprietors
Phone 679-9901 Yadkinville

Sealtest Ice Cream and Milk

Winston-Salem

Phone PA 3-0311

ROSE BROTHERS PAVING

Free Estimates
Phone 835-2540

Jonesville

P AND N DEPARTMENT STORE

Ruth Holcomb Rena Holden
Yadkinville

**ELECTRIC
COMFORT
HEATING**



**CLEAN
THRIFTY
TROUBLE-FREE
SAFE**

DRAFT-FREE COMFORT

**Installs in baseboards,
slab floors or ceilings**

Ask for details from your
heating specialist at

**DUKE
POWER COMPANY**

**JAMES WILLIAMS
AND COMPANY**

For Quality Wedding Invitations
and Announcements
at Reasonable Prices

Yadkinville

FAVORITE CLEANERS

Dry Cleaning - Laundry
Complete Hat Rebuilding Service

Yadkinville



TODD'S SUPERETTE

Staple and Fancy Groceries

"BEST MEATS IN TOWN"

YADKINVILLE, N. C.

TELEPHONE 679-4371

EAST BEND
DRIVE-IN THEATRE

with
Drag Racing
Every Sunday Afternoon

Highway 67
East Bend

PICKETT & HUFF

GROCERIES, ELECTRICAL APPLIANCES
FURNITURE

Phone 961-2590
East Bend

QUALITY OIL COMPANY

Boonville, North Carolina

Kerosene Fuel Oil
Route Service
Printometer Tickets
Phone 367-2229

CRISSMAN CLOTHIERS

McGregor Sports Wear
and Botany 500

Phone 367-2618
Boonville

SHEEK-TAYLOR
DRUGS

- Prescription Specialist -



Drugs Sundries
Cosmetics
Soda Fountain

Phone 679-4531 Yadkinville

WESTERN AUTO
ASSOCIATE STORE

Davis Tires and Tubes
Truetone Radios and Television
Wizard Batteries

Yadkinville

YADKIN FURNITURE COMPANY

"You Furnish the Wife,
We Furnish the Home"

Bill Todd

Phone 679-2286 Yadkinville

WILLIAMS AND GENTRY GROCERY

Groceries - Meats - Amoco Gas
Yadkinville

BAITY'S TIRE SERVICE

Recapping and Used Tires

Phone Forbush 6-2128
Route 3 Yadkinville

BROWN'S DEPARTMENT STORE

Furniture House Furnishings
Floor and Wall Tile Linoleum
Carpeting
Clothing for the Entire Family
Phone 679-2161
West Main Street
Yadkinville

BOONVILLE CLEANERS AND LAUNDRY

Prompt and Dependable Service
Quality Dry Cleaning and Laundry

Phone 367-2622
Boonville

CRATER-HOOT'S FURNITURE COMPANY

Yadkinville Clothing Company
Phone 2261
Yadkinville

ADAMS MOTOR CO., INC.

Dodge Passenger Car
Dodge Trucks

Box 276 Phone 2351
Yadkinville

McLEOD'S SHELL SERVICE



Phone 3691

Yadkinville

In Winston-Salem Shop at
**MOTHER AND DAUGHTER
FASHIONS**
Corner Liberty and Third Street
For the Newest in
Feminine Fashions

KELLY TYPEWRITER COMPANY

Royal Typewriters
Sales - Service - Rental

618 West Fourth Street
Winston-Salem

Nothing does it—
like Seven-Up!
**SEVEN-UP BOTTLING
COMPANY**

Winston-Salem

TAYLOR WAREHOUSE CO.

Winston-Salem

Phone PA 2-6949

A Sale Every Day

MT. TABOR FOOD MARKET

3445 Robin Hood Road
Winston-Salem

"Nothing but the best for less"

**BROWN AND EVANS
LUMBER COMPANY**
Rough and Finished Lumber
Building Material

Telephone 679-2561
Yadkinville



Boys' and Men's Clothing
of Distinction
Styled at Reasonable Prices
Winston-Salem

DORSETT METAL SHOP



Heating

Guttering

General Sheet Metal Work

Phone 679-2126

Yadkinville

ROSE'S 5-10-25¢ STORE

Value and Variety
Open 9:30 A.M. - 9:00 P.M.
Monday through Friday
9:00 A.M. - 6:00 P.M. Saturday
Northside Shopping Center
Winston-Salem

COOK'S WAREHOUSE

Winston-Salem



Downtown Parkway Plaza
Winston-Salem, North Carolina

TAT DAVIS INSURANCE AGENCY

Up to 20% Dividends on
Home owners and Collision

Phone 835-2944
P.O. Box 223, Elkin

MATHIS JEWELRY STORE

Elgin - Hamilton - Bulova Watches
Keepsake Diamonds
Samsonite Luggage
"You Name It - We Have It"
Boonville
Phone 367-2510 Night 367-2658

ROBY WAGONER INSURANCE AGENCY

The Friendly Agency
All Kinds of Insurance
Phone 367-2325
Boonville

ISENHOUR'S, JEWELERS

Certified Watchmakers

113 East Main Street
Elkin
Telephone 835-4468

YOU'RE ALWAYS WELCOME
at the

CHATHAM COUNTRY STORE
in
Elkin, North Carolina

Bargains in Blankets,
Apparel Fabrics, Upholstery
and Odds and Ends

REAVIS MOTORS

"Your Yadkin County FORD Dealer"

Phone 679-4721 Yadkinville

CHATHAM MANUFACTURING COMPANY

ELKIN

YADKIN LUMBER COMPANY

Rough and Finished Lumber
Building Material
Call Our Number for Lumber
Phone 679-3911
Yadkinville

HIBCO PLASTICS

Phone 3871

Yadkinville

A Modern Department Store

Elkin

Spainhour's



This athletic equipment was purchased at
BOCOCK-STROUD COMPANY

Dependable since 1921

Winston-Salem

Phone PA 4-2421

**CLINARD
EQUIPMENT COMPANY**

Allis-Chalmers
Sales and Service
Allis-Chalmers and New Idea
New Holland Homelite

Information



Radio!

**BLACKWELDER'S
FURNITURE COMPANY**

Quality Furniture
Low Cost
Telephone 835-1424
Jonesville

GROCE MOTOR COMPANY

Yadkin's only Pontiac
Dealer
Yadkinville

DENNIS, INCORPORATED

THE FINEST NAME IN POPCORN

1344 N. Liberty Street
Winston-Salem
Phone 724-0546

YADKIN 66 SERVICE

We Care about Your Car

Yadkinville

HOME AND AUTO SUPPLY

Your Firestone Dealer

Appliances

Television

Records

Yadkinville

CASSETEVENS HARDWARE CO.

Paint and Glass
Headquarters for

Yadkinville

BOONVILLE HOME FURNISHINGS, INC.

G.E. Appliances

Phone 367-2623

TOTS AND TEENS SHOP

See us for Nationally
Advertised

Infants' and Children's Wear

Phone 4701

Yadkinville

Mrs. Nell Long-Mrs. Bonnie Hinshaw

LEGAIN'S GROCERY

Meat

Vegetables

Gas

Canned Goods

Yadkinville

Phone 2681

BELK STEVENS CO.

Home of Better Values

Winston-Salem

HEFFNER'S

LAND OF FOOD



Yadkinville, N.C.

West Main St.

Mocksville, N.C.

North Main St.

Clemmons, N.C.

Lewisville Clemmons Rd.

ADAMS RADIO & T.V. SERVICE

AFTER THE SALE IT'S THE SERVICE THAT COUNTS

Phone 679-7281

Yadkinville, North Carolina

PHILCO

ZENITH



the friendly

"Pepper-Upper"

Autographs

Autographs

Autographs

Autographs

Autographs

Autographs

Autographs

A Product of



hunter Publishing
COMPANY

333 INDIANA AVENUE
WINSTON-SALEM, N.C.



