

*The Yan-Tat*

1953





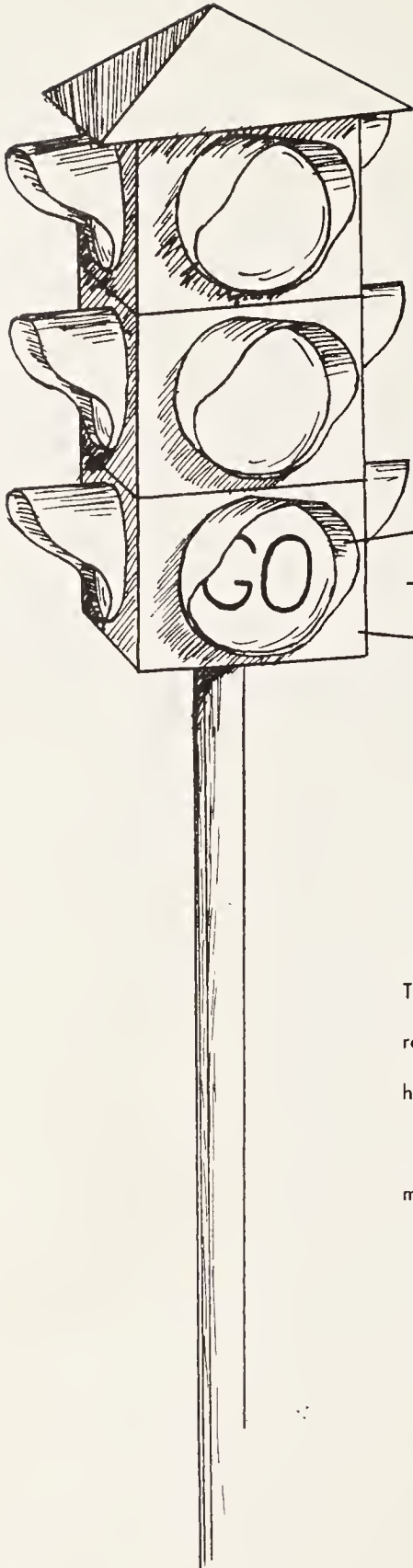
Digitized by the Internet Archive  
in 2019 with funding from  
North Carolina Digital Heritage Center

[https://archive.org/details/yantat19531953bart\\_0](https://archive.org/details/yantat19531953bart_0)



THE  
YAN-TAT  
OF 1953

Edited by the Senior Class  
of  
BARTLETT YANCEY HIGH SCHOOL  
Yanceyville, North Carolina



Gunn Memorial Public Library  
Yanceyville, N. C. 27379

### FOREWORD:

After months of enjoyable work we present "The Yon-Tot" of 1953. It is our wish that it will serve as a constant reminder of this year at Bartlett Yancey and hold many happy memories.

We would like to thank everyone who had a part in making this yearbook possible.

The Annual Staff



## DEDICATION

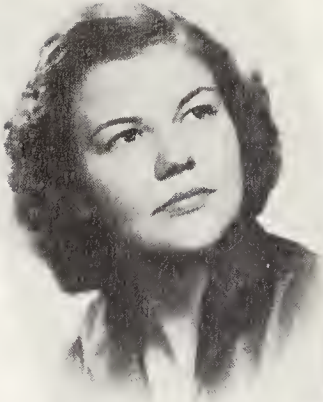


Because of his loyalty to our school and to his profession of teaching and coaching; for his constant endeavors to promote good sportsmanship both on and off the playing field; for his untiring efforts in helping to make this yearbook a success.

We, the Senior Class of nineteen-hundred and fifty-three, respectfully dedicate "THE YAN-TAT" to

MR. WILLIAM EDWARD NIVEN.

# THE YAN-TAT STAFF



Ellen Stephens ..... Editor-in-Chief  
 Mr. N. S. Upchurch ..... Advisor  
 J. C. Powell ..... Business Manager



Ellen Stephens ..... Editor-in-Chief  
 Mary Arnold Stephens ..... Assistant Editor  
 J. C. Powell ..... Business Manager  
 Velma Guthrie ..... Secretary  
 Susie Willis ..... Feature Editor  
 Shirley Lunsford, Duke Foster ..... Sports Editors  
 Ann Gunn ..... Art Editor  
 Helen Farthing, Jim Long ..... Class Representatives  
 Harris Powell, Christine Crumpton ..... Class Representatives



# Faculty



WE TAUGHT \_\_\_\_\_





## FACULTY

MR. S. H. ABELL

Principal  
Mathematics

MRS. NAOMI HODGES

English, Spanish

MISS COLIEN LONG

English

MR. T. H. MOORE

Typing, Shorthand  
General Business  
Bookkeeping

MR. W. E. NIVEN

Sociology, Health  
Geography

MR. R. E. SADLER

Agriculture

MISS THEO STRUM

Algebra, Mathematics

MR. N. S. UPCHURCH

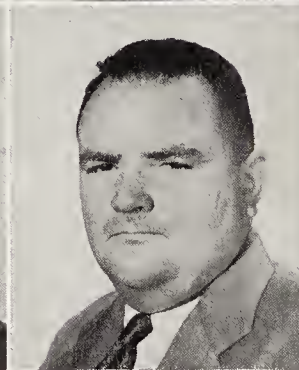
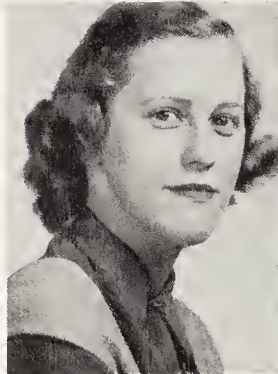
Civics, U. S. History  
World History

MRS. J. G. WOOTTON

Home Economics

MISS SARAH YARBOROUGH

General Science  
Biology





# Classes



WE STUDIED \_\_\_\_\_



# SENIORS



## SENIOR OFFICERS

J.C. Powell..... Treasurer  
Barbara Bowes ..... Secretary  
Ben Blalock..... Vice-President  
Earl Harrison..... President



GEORGE WILLIAMSON

## MASCOTS



BECKY NEAL

# SENIORS

ODELL BARNELL

Class Reporter 4; Music 1, 2; Glee Club 1, 2, 3, 4; Superlative (Most Attractive).

JUANITA BARTS

Student Council Representative 1; Secretary of Class 1; Hobby Club 1; Glee Club 1; Dramatics Club 2, 3, 4; Dramotics Club Secretary 4.

BENJAMIN HARDY BLALOCK

Transferred from Prospect Hill '52-'53: F. F. A. 1, 2, 3; F. F. A. Secretary 1; Reporter 2; Class President 2; Teen-Age Club 2; Bus Driver 1, 2, 3; Bartlett Yancey: Bus Driver 4; Class Vice-President 4; Superlative (Best All-Around).

MARY SUE BLALOCK

Transferred from Prospect Hill '52-'53: Secretary of Class 3; Member of Teen-Age Club 2; Member of Glee Club 2; Reporter of 4-H Club 1; Bartlett Yancey: Beto Club 4; Bus Driver 4.



BARBARA ANN BOWES

Music 1, 2; Glee Club 1; F. H. A. 1; Dramatics Club 2, 3, 4; Basketball 3, 4; Y Club 3, 4; Beto Club 3, 4; Beta Club Vice-President 4; Secretary of Class 4; Assistant Editor of Tattler 4; Teen-Age Club 3, 4; Bus Driver 3, 4; Superlative (Most Likely to Succeed); Secretary of Dramatics Club 4.

MORRIS LEE CARTER

Transferred from Prospect Hill '52-'53: Vice-President of Junior Class 3; Basketball 2, 3; Baseball 1, 2; F. F. A. 1, 2, 3; F. F. A. Secretary 3, Reporter 1, Treasurer 2; Teen-Age Club 2; Bartlett-Yancey: Basketball 4; Bus Driver.

O. M. DABBS, JR.

F. F. A. 1, 2, 3, 4; Secretary of F. F. A. 1, 2; Baseball 1, 2, 3; Key Club 1, 2; Bus Driver 4; Porliamentary Procedure Team 1, 2.

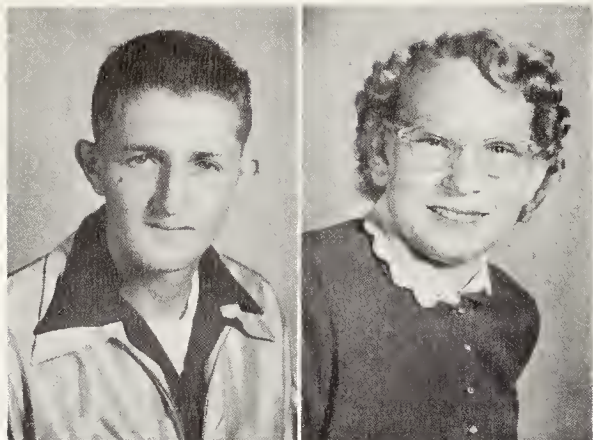
MARGARET PAGE DANIEL

F. H. A. 1, 2; Treasurer of Class 2; Music 1, 2; Dramatics Club 2, 3, 4; Typist for Tattler 4; Bus Driver 3, 4.





## SENIORS



JIMMY LEE DANIEL

F. F. A. 1, 2, 3, 4; Basketball 3, 4; Football 4; Baseball 3, 4;  
Key Club 3, 4; Glee Club 3.

MARGARET J. DANIELS

Transferred from Prospect Hill '52-'53: Secretary of Class 2;  
Teen-Age Club 1, 2; Glee Club 1; Bartlett Yancey student 4.



GRACIE DIX

Transferred from Murphy '51-'52: Softball 1, 2; Glee Club 2.  
Bartlett Yancey student 3, 4.

DUKE FOSTER

President of Class 1; Baseball 1, 2, 3, 4; Football 3, 4; Co-  
Captain of Football team 4; Basketball 1, 2, 3, 4; F. F. A. 1,  
2, 3, 4; 4-H Club 1, 2, 3, 4; Secretary of 4-H Club 3; Teen-  
Age Club 3, 4; "Y" Club 2, 3, 4; Glee Club 3; Habby Club  
2, 3; Sparts Editor of Tattler 3, 4; Sports Editor of Annual 4;  
Superlative (Mast Athletic).

BILLIE RAE FARTHING

Transferred from Reidsville High School '51-'52. Bartlett  
Yancey: Glee Club 3; Softball 3.

PENCIE BELLE FUQUA

Glee Club 1; Bus Driver 4.

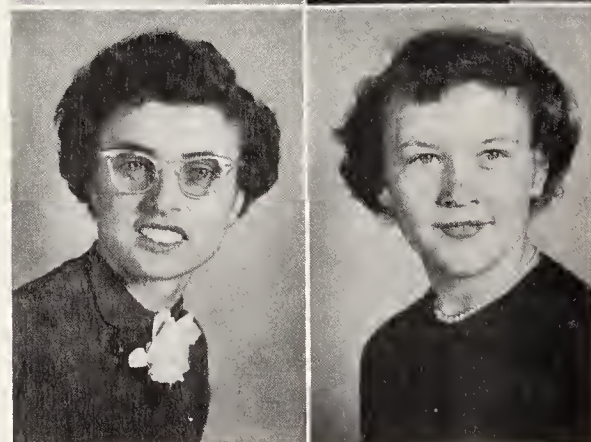


VELMA JEAN GUTHRIE

Glee Club 2, 3, 4; Basketball 2, 3, 4; "Y" Club 3, 4; F. H. A.  
1, 2; Reporter for Tattler 2, 3; Annual Secretary 4; Typist for  
Tattler 4; Bus Driver 4; Superlative (Best-All-Around); Co-  
Captain of Basketball team 4; "Y" Club Vice-President 4;  
School Pianist 4.

RACHEL HAMLETT

Glee Club 1, 2, 3; Softball 1.



# SENIORS

EARL DEAN HARRISON

President of Class 4; Parliamentary Procedure Team Reporter 3; Basketball 1,2,3,4; Football 1,2,3,4; Baseball 1,2,3,4; "Y" Club 2,3,4; F.F.A. 1,2,3,4; Teen-Age Club Vice-President 4.

HUGH YANCEY HIGHTOWER

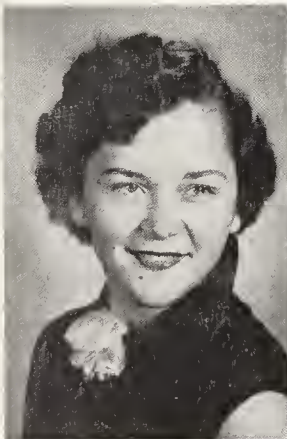
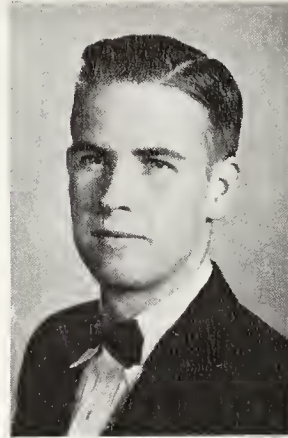
Transferred from Prospect Hill '52-'53: F.F.A. 1,2,3; F.F.A. Reporter 1; Teen-Age Club 1,2. Bartlett Yoncey student 4.

EDWIN HODGES

Baseball 1,2,3; "Y" Club 3,4; F.F.A. 1,2,3,4; F.F.A. Reporter 3; Seed Judging Team 3; Cattle Judging Team 3; Key Club 4; Hobby Club 3; Printer for Tattler 4; Student Council 1,2.

MARJORIE CARLENE LOFTIS

Cross Parliamentarian 2; F.H.A. 1.



SHIRLEY MARIE LUNSFORD

Glee Club 2,3,4; Basketball 2,3,4; "Y" Club 3,4; F.H.A. 1,2; Cross Parliamentarian 3, Sports Editor for Annual 4; Sports Reporter for Tattler 4; Beta Club 4; Typist for Tattler 4; Basketball Team Co-Captain 4; Superlative (Most Athletic).

CORNELIA MAE MOOREFIELD

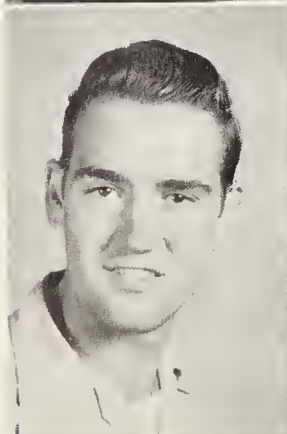
Transferred from Murphy '51-'52: Bartlett Yoncey Bus Driver 4; Marshal for Senior Class 3; "Miss Bartlett Yoncey" 3.

JOHN ALVIS OAKLEY

Transferred from Prospect Hill '52-'53: F.F.A. 1,2,3; Teen-Age Club 2; Basketball 1,2. Bartlett Yoncey student 4.

JENNIE MAE PLEASANT

Glee Club 1,2,3.





## SENIORS



J. C. POWELL

President of Junior Class 3; President of Student Body 3; F. F. A. 1, 2, 3, 4; Member of Beta Club 3, 4; President of Beta Club 4; President of Key Club 4; Member of Glee Club 3; Treasurer of Senior Class 4; Superlative, (Most Intellectual).

EVELYN MARIE RICHMOND

Glee Club 1, 2, 3, 4; Bus Driver 4; Basketball 2, 3, 4; F. H. A. 2, 3, 4.



CURTIS ROGERS

Band 1; 4-H Club 1, 2; Hobby Club 2, 3; Glee Club 3; Dramatics Club 4; F. F. A. 1, 2, 3, 4.

NORMA SLAUGHTER

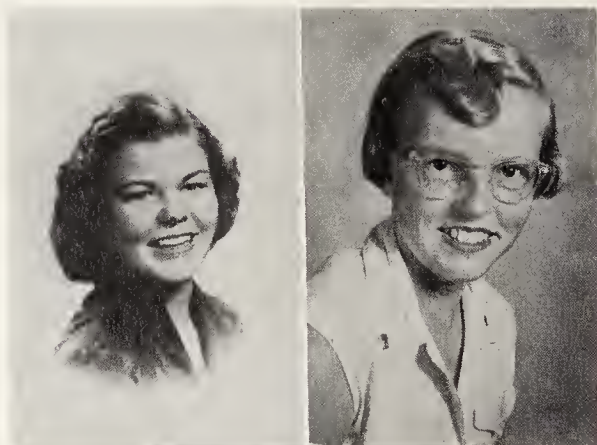
Transferred from Murphy '51-'52; Softball 2; Glee Club 2; Bartlett Yancey student 3, 4.

MARY ELLEN STEPHENS

Secretary of Class 2; Student Council 2; Secretary of Class 3; F. H. A. 1, 2; Assistant Editor of Tattler 3; Editor of Annual 4; Student Council Secretary 4; Beta Club 3, 4; Treasurer of Beta Club 4; Dramatics Club 2, 3, 4; President of Dramatics Club 4; Basketball 4; Superlative (Most Dependable).

MARY ARNOLD STEPHENS

Editor of Tattler 4; Assistant Editor of Annual 4; President of Class 2; Beta Club 3, 4; Beta Club Reporter 4; Basketball 4; Glee Club 1, 2, 3, 4; Superlative (Most Intellectual).



ARNITTA BERNICE TATUM  
Softball 3; Beta Club 4.



## SENIORS

MARY WILLIE THOMPSON

Dramatics Club 1,2,3,4; Representative of Student Council 3; Typist of Tattler 4; Glee Club 1; F. H. A. 1; Beta Club 3, 4; Secretary of Beta Club 4.

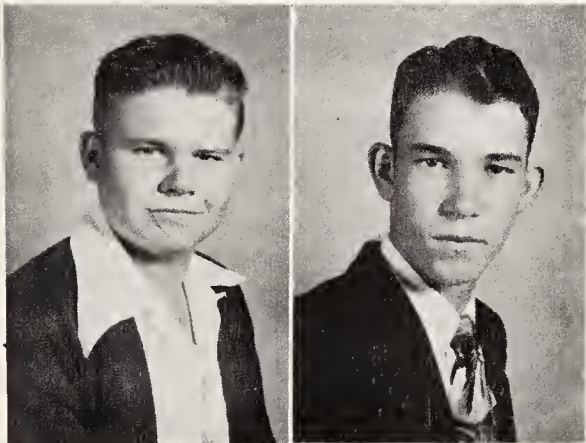
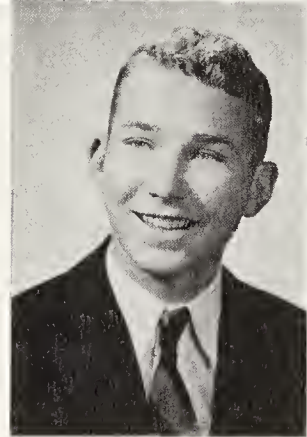
FRANCES SUE TRAVIS

Glee Club 1,2,3,4; Beta Club 4; 4-H Club 1; Business Manager of Tattler 4; Typist of Tattler 4.



WILLIAM McNEAL TURNER

President of Student Council 4; F. F. A. Reporter 4; F. F. A. 1,2,3,4; Key Club 3,4; Glee Club 3; Habby Club 2; Tattler Staff 4; Superlative (Most Dependable).



JOHN MITCHELL WALKER

F. F. A. 1,2,3,4; F. F. A. Secretary 4; Key Club Member 4; Bus Driver 4.

JOHNNY MAC WATLINGTON

Baseball 1,2,3,4; Basketball 1; Football 1; F. F. A. 1,2,3,4; Bus Driver 4; Glee Club 3; "Y" Club 2,3,4; Superlative (Most Attractive).



SUSIE WILLIS

Basketball 2,3,4; Vice-President of Class 2; Typist for Tattler 4; Glee Club 1,2,3,4; Feature Editor of Annual 4.



SENIOR



BEST ALL AROUND

Velma Guthrie - Ben Blalock



SUPERLATIVES



MOST INTELLECTUAL

Mary A. Stephens - J. C. Powell

SENIOR



MOST DEPENDABLE

Ellen Stephens - Bill Turner



SUPERLATIVES



MOST ATHLETIC

Shirley Lunsford - Duke Foster

SENIOR



MOST ATTRACTIVE

Odell Barnwell - John Mac Watlington



SUPERLATIVES



MOST LIKELY TO SUCCEED

Barbara Bowes - Edwin Hodges



# JUNIORS

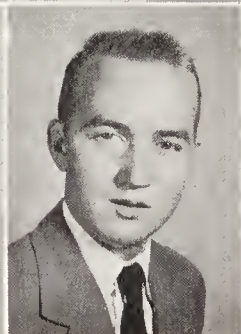
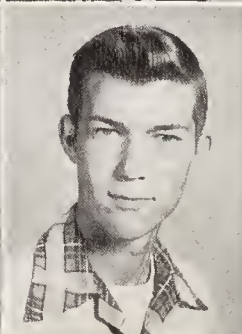


## JUNIOR OFFICERS

Phoebe Massey.....Treasurer  
 Joyce Ann Powell.....Secretary  
 Lugene Walker.....Reporter  
 C. V. McKinney .....President



Clara Aldridge  
 Geraldine Blaylock  
 Burnell Briggs  
 Geraldine Brooks



Donald Carver  
 Carolyn Chandler  
 F. L. Cobb  
 Samuel Cooper

Sponsored by  
 PEOPLES AUTO SUPPLY, INC.  
 Danville, Virginia

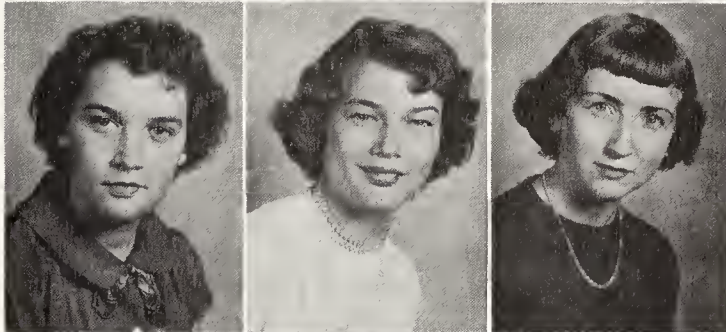


## JUNIORS

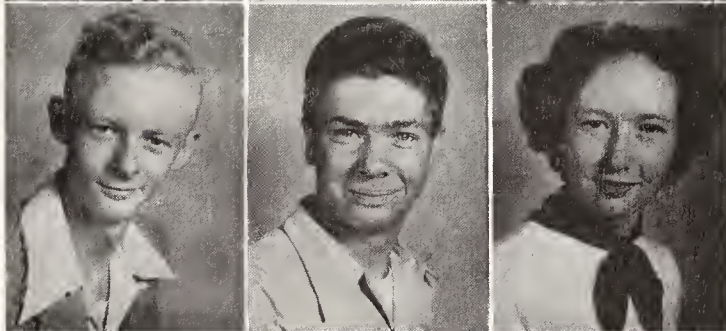
Louise Crews  
Isabelle Crook  
Betty Lou Daniels



Esther Denny  
Laura Ann Donevan  
Helen Jean Farthing



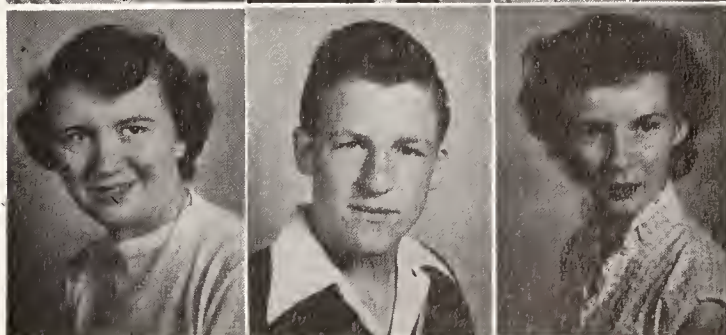
Monroe Gatewood  
Harold Gray  
Ann Gunn



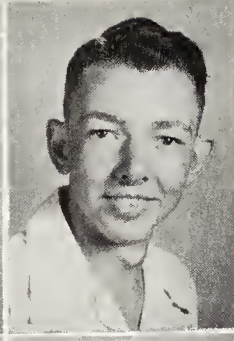
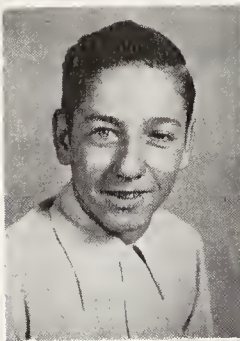
Frances Hamlett  
Jack Hamlett  
Carl Harvey



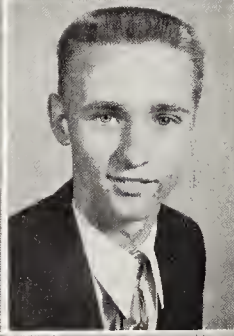
Frances Hooper  
Jackie Hooper  
June Hubbard



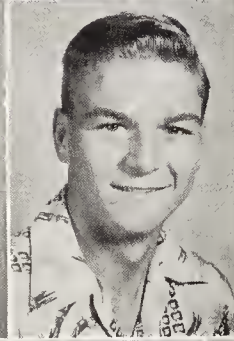
# JUNIORS



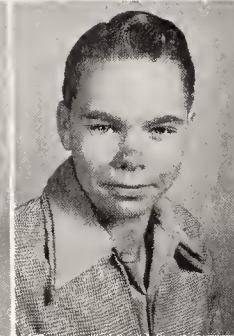
Robert Lee King  
Margaret Lunsford  
Harrell Mabe



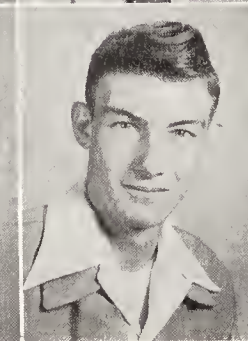
Phoebe Massey  
Hilda Matherly  
Billy Mise



C. V. McKinney  
Katie Sue Oakley  
Allison Page



JoAnne Pleasant  
Peggy Poteat  
Bobby Powell



Joyce Ann Powell  
Amie Pulliam  
Verelene Pulliam



## JUNIORS

Bobby Rudd

Mary Fannie Sartin

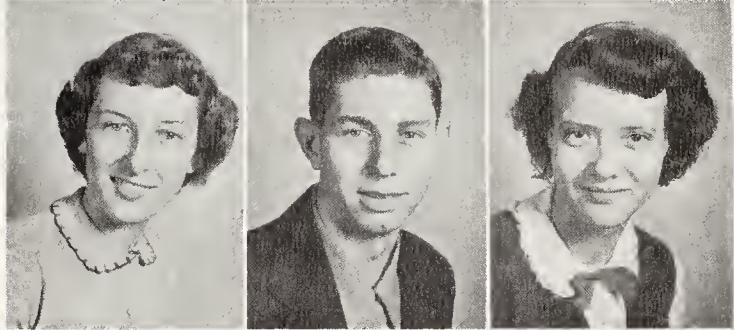
Elizabeth Satterfield



Aldine Shelton

Edgar Slade

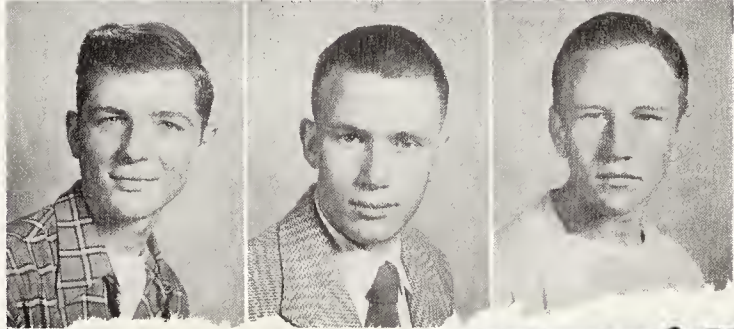
Mattie Jean Slaughter



Howard Smith

Billy Taylor

Oldham Terrell



# SOPHOMORES



## SOPHOMORE OFFICERS

Billy Johnson .....Vice-President  
Billy Gwynn.....President  
Camilla Stuck .....Secretary  
Mary Ann Turner .....Treasurer



Charles



## SOPHOMORES



Left to right, first row: Jim Crumpton, Richard Doiley, Lottie Dix, Eunice Dunevont, Donald Files. Second row: Jeon Foster, Carlton Fuquoy, Rodney Fuquoy, Murlene Garmon, Billy Gwynn. Third row: Muriel Hicks, Bob Hunt, John H. Kirby, Jr., Hilda Ledbetter, Christine Loftis. Fourth row: A.C. Long, Jim Long, Patricio Lunsford, Billie McLendon, Nancy Moorefield.

Sponsored by  
 L. HERMAN INC.  
 Donville, Virginia



## SOPHOMORES



Left to right, first row: Billy Murphy, Shelby Jean Oakley, Doris Oldham, Ralph Parker, John Lee Pleasant. Second row: Jane Poteat, Betty Jean Reagan, Cindy Reynolds, John Reynolds, Millard Roberts. Third row: Bradley Rudd, Frances Rudd, Peggy Slaughter, Elwood Smith, Marion Smith. Fourth row: Comillo Stuck, John Howard Talley, William Thompson.



## SOPHOMORES



Left to right, first row: Banks Totton, Claro Turner, Louise Turner, Momie Lou Turner, Mory Ann Turner. Second row: Womer Vernon, Som Wolker, Mortho Ward, Gerolyn Watson, Osborne Watson. Third row: Geroldine Webster, Lonnie Moe Wiles, J.C. Willis, Jimmy Willis, Betty Joyce Wilson. Fourth row: Carolyn Wood, Yvonne Worshom, Edwin Earl Yarbrough.



## FRESHMEN



## FRESHMEN OFFICERS

Lib Long ..... President  
 Christine Crumpton..... Annual Representative  
 Charles English..... Secretary-Treasurer  
 Harris Pawell..... Annual Representative



Left to right, first row: Jeanette Aherron, Carol Anderson, Dan Averett, Sylvia Barlow, J.W. Barts, Mary Buck.  
 Second row: Moxine Bush, Dean Corter, Edward Carter, Shirley Carver, Lau Ann Cheek, Lillie Ann Caley.



## FRESHMEN



Left to right, first row: Wolloce Cook, Emogene Cook, Irene Crews, Christine Crumpton, Kirby Dolton, Mary Ann Dolton. Second row: Noah Davis, Ruby DAVIS, Jeon Denny, Horry Dix, Shirley Dix, Carl Duncon. Third row: Richard Duncon, James Earp, Charles English, Nancy Everett, Clyde Everett, Dionne Fitch. Fourth row: Morie Foster, Grohom Fuquoy, Raynell Griffin, Flarine Hicks, Ann Kirks, Carol Loftis. Fifth row: Hazel Loftis, Elizabeth Long, Bobby Lunsford, Lulo Belle Lunsford, Wayne Massey, Harold McCain. Sixth row: Joyce McCloin, James Mise, Jaye Murphy, Earl Nelson, Kent Nelson, Wolloce Nelson.



## FRESHMEN



Left to right, first row: Hilton Ookes, Mary Ann Oakes, Robert Oakley, Madeline Parker, Jeanette Potat, Elizabeth Pawell. Second row: Harris Pawell, Martha Purnell, Bessie Rimmer, Edith Rogers, Bobby Satterfield, Mory Satterfield. Third row: Emerson Scarborough, Carolyn Shatterly, Barbora Slaughter, W.A. Slaughter, Earl Smith, Franklin Smith. Fourth row: Jack Snead, Ann Soloman, Christine Sawers, Marie Spivey, Elizabeth Thompson, Lucille Thompson. Fifth row: Peggy Turner, Bobby Voight, Jenelle Wolker, Bobby Worren, Curtis Watson, Penn Watlington. Sixth row: Henry Webster, Alease Wilkins, Rebecca Willis, Curtis Young.



SNAPSHOTS



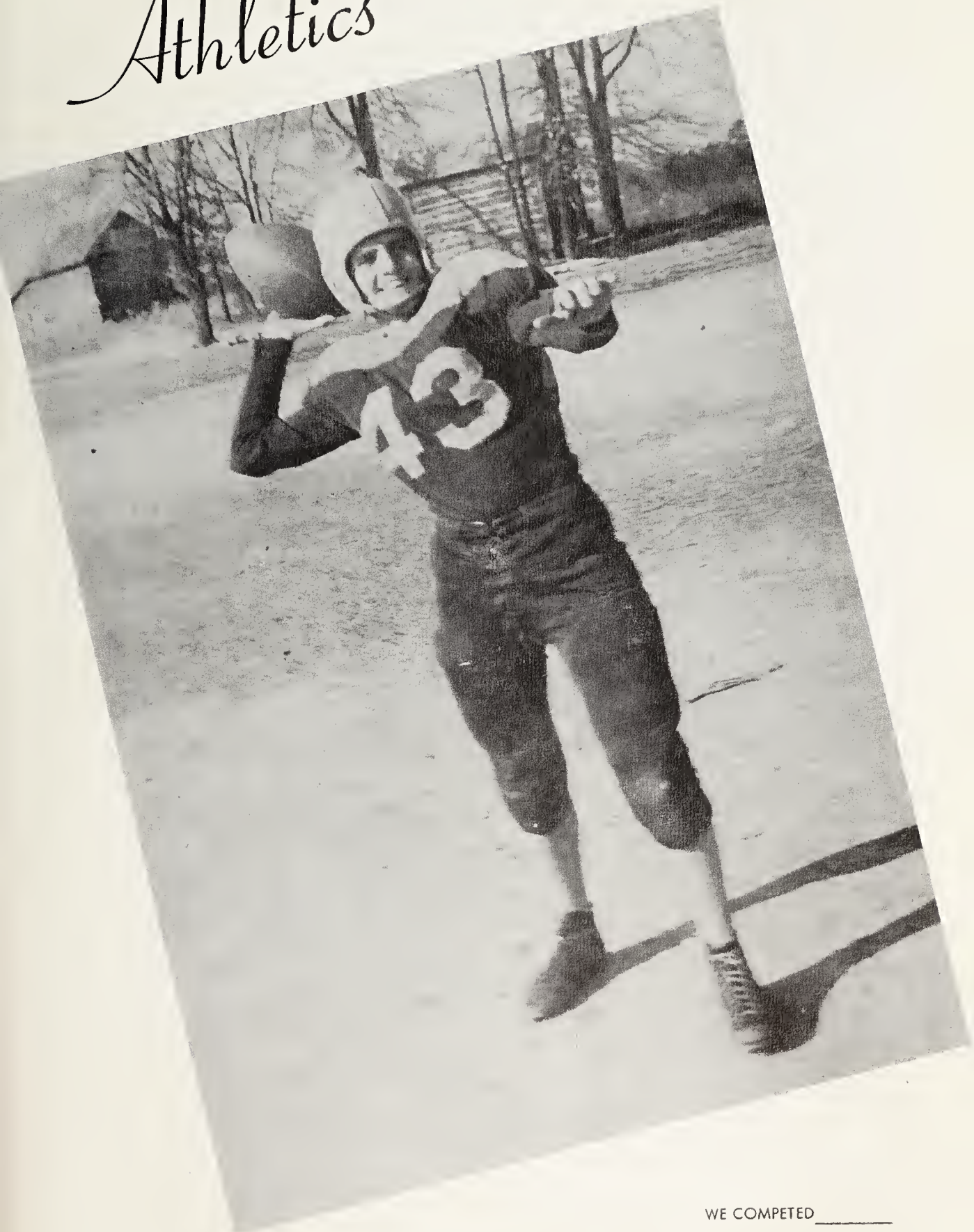


# SNAPSHOTS



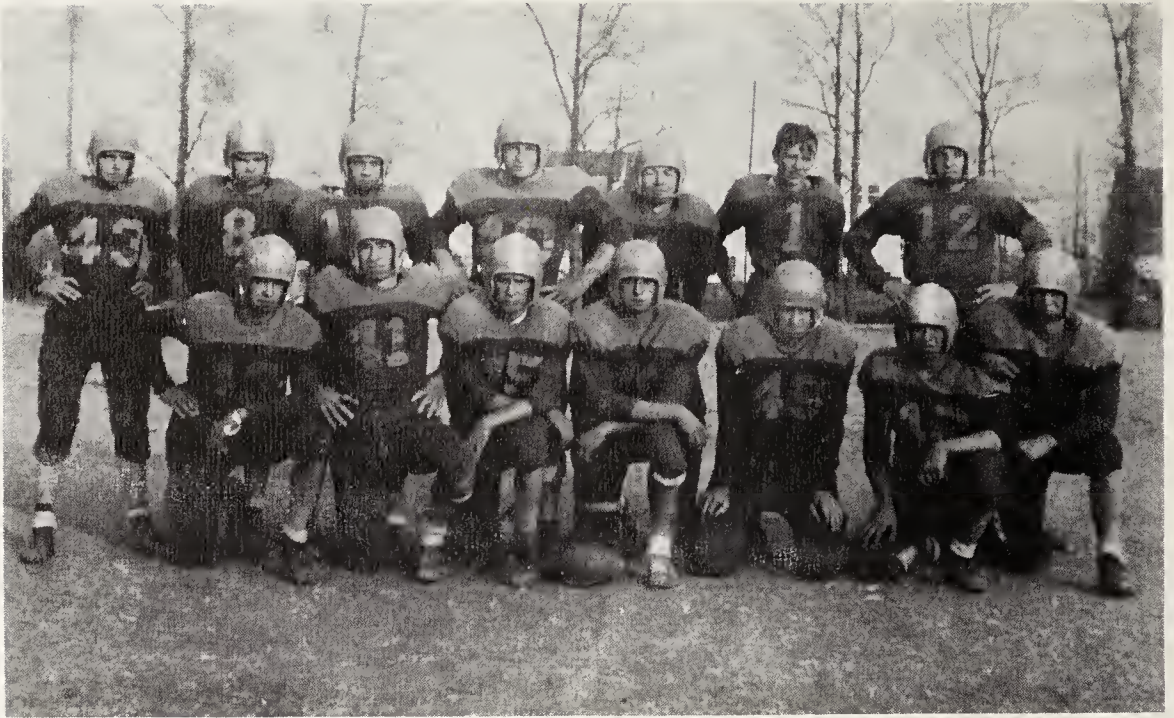


# Athletics



WE COMPETED \_\_\_\_\_

## ATHLETICS



### FOOTBALL

Left to right, first row: Jim Long, Jimmy Crumpton, Duke Foster, C.V. McKinney, Jr., Jimmy Daniel, Donald Files, Allison Page. Second row: Billy Gwynn, Bobby Powell, W.A. Slaughter, Jackie Hooper, Harold Mabe, Oldham Terrell, Osborne Watson.



Left to right: C.V. McKinney, W.E. Niven,  
Ralph Sadler, Duke FASTER.

Sponsored by  
COLE CHEVROLET COMPANY  
Yanceyville, North Carolina



## ATHLETICS



On September 14, B. Y. H. S. opened the 1952 season by tying Cobb 6-6.

The following Friday the Yellow Jackets won their first game by defeating Nathaniel Green 26-0. Their passing attack won this game.

October 3, the Yellow Jackets met Curry on the local gridiron, and won their second game by a score of 33-6. The running attack of the victors was the outstanding feature of the game.

The next Friday found B. Y. H. S. at Pittsboro where they were topped by a score of 7-6.

In a hard fought game on the local field, B. Y. H. S. edged out Summer High by a score of 26-25.

On October 24, the team played at Cobb and lost the game 26-16.

The following week Nathaniel Green invaded the Yanceyville gridiron only to be defeated. The triumphant score was 49-6.

The Yellow Jackets finished the season with a 35-24 loss to Curry.

Coach W. E. Niven's Yellow Jackets scored a total of 170 points to their opponents 85.

Sponsored by  
CROWELL-LONG AUTO COMPANY  
Danville, Virginia

# ATHLETICS



## GIRLS' BASKETBALL

Left to right, kneeling: Carolyn Wood, Frances Hooper, Shirley Lunsford, Velma Guthrie, Jeon Foster, Evelyn Richmond, Lib Long. Standing: Mary Arnold Stephens, Susie Willis, Emogene Cook, Ellen Stephens, Yvonne Worsham, Marlowe Morlock, Borboro Bowes, Christine Crumpton, W.E. Niven. Not Pictured: Shurby Willis, Jane Poteat.



## FIRST TEAM

Left to right: Evelyn Richmond, Shirley Lunsford, Velma Guthrie, Frances Hooper, Carolyn Wood, Jeon Foster.

Sponsored by  
THE CASWELL MESSENGER  
Yanceyville, North Carolina



# ATHLETICS



## BOYS' BASKETBALL

Left to right, kneeling: Millard Roberts, Jim Long, W.E. Niven, Duke Foster, Earl Harrison. Standing: Billy Gwynn, Graham Fuquay, Donald Carver, Jimmy Daniel, Ralph Parker, Bobby Powell. Not Pictured: Morris Carter.



## FIRST TEAM

Left to right: Earl Harrison, Duke Foster, Donald Carver, Ralph Parker, Jim Long.

Sponsored by  
CASWELL HARDWARE & IMPLEMENT COMPANY  
Yanceyville, North Carolina

# ATHLETICS



## CHEERLEADERS

Top to bottom: Peggy Poteat, Head Cheerleader;  
Della Belcher, Geraldine Brooks, Billie McLendon.

Sponsored by  
BROWN'S JEWELRY COMPANY  
Danville, Virginia



# ATHLETICS



## BASEBALL

Left to right, first row: R.E. Sadler, Billy Gwynn, Jimmy Doniel, F.L. Cobb, Jahn Mac Watlington, Duke Foster, Edgar Slade, Bernell Briggs, Allisan Page. Second row: W.E. Niven, Jim Long, Bobby Pawell, O.M. Dabbs, Edwin Hodges, Jimmy Willis, Earl Harrison, Osbarne Watson, Sam Walker, Harry Briggs, Jimmy Briggs, N.S. Upchurch.

## ATHLETIC SNAPSHOTS





WHEN WE WERE VERY YOUNG





# Activities



WE ORGANIZED \_\_\_\_\_



# ACTIVITIES



## STUDENT COUNCIL

Left to right, seated: Allison Page, Bill Turner, Ellen Stephens. Standing: J.W. Barts, Mr. Thomas Moore, Jim Long, Joyce Ann Powell, Sylvia Barlowe, Della Jane Belcher.

The Student Council Officers are as follows:

President.....	Bill Turner
Vice-President.....	Allison Page
Secretary.....	Ellen Stephens
Reporter.....	Jim Long
Advisor.....	Mr. Thomas Moore

The purpose of the Council was to form a better understanding and cooperation between students and faculty.

One of the projects undertaken by the Council was to setup a regular series of assemblies and to provide interesting speakers.

Through group discussion plans were formulated to help make the school year a more enjoyable one, both for students and faculty.

The Council acted as a voice for the students and many suggestions and criticisms brought forth received attention.



# ACTIVITIES



THE TATTLER STAFF

Editor-in-chief.....	Mary Arnold Stephens
Assistant Editors.....	J.C. Powell
.....	Lugene Walker
.....	Barbara Bowes
Sports Editors.....	Shirley Lunsford
.....	Duke Foster
Art Editor.....	Helen Jean Farthing
Gossip Editor.....	Marlawe Matlack
Humar Editor.....	Allison Page
Typists.....	Velma Guthrie
.....	Shirley Lunsford
.....	Susie Willis
.....	Margaret Daniel
.....	Mary W. Thompson
Adult Advisor.....	Mrs. Naomi Hedges
Printers.....	Bill Turner
.....	Jahnnny Mac Watlingtan
.....	Edwin Hodges
Class Reporters.....	Elizabeth Long
.....	Jim Long
.....	Janie Burch
.....	Lugene Walker
.....	Odell Barnwell

"The Tattler," our school's newspaper, is published bi-monthly this year instead of weekly and the number of pages has been daubles. The new articles that have been added are: "Alumni News," "Top Mavies," "Feature Page," "Record Raundup," and "Senior Spotlight."

Sponsored by  
 THOMSPON INSURANCE AGENCY  
 Yanceyville, North Carolina

# ACTIVITIES



BETA CLUB

## OFFICERS

J.C. Powell.....President  
 Barbara Bowes.....Vice-President  
 Mory Willie Thompson.....Secretary  
 Ellen Stephens.....Treasurer  
 Miss Theo Strum.....Advisor



KEY CLUB

## OFFICERS

J.C. Powell.....President  
 Somuel Cooper.....Vice-President  
 Bill Turner.....Secretary  
 Horrell Mabe.....Treasurer

Sponsored by  
 PLEASANT'S ESSO STATION  
 Yanceyville, North Carolina



# ACTIVITIES

## DRAMATICS CLUB



### OFFICERS

Ellen Stephens.....	President
Billy Johnson.....	Vice-President
Barbara Bowes.....	Secretary
Juanita Barts.....	Treasurer



## GLEE CLUB

Mrs. John Hardy.....	Director
Velma Guthrie.....	Accompanist

Sponsored by  
 WESTERN AUTO ASSOCIATE STORE  
 Yanceyville, North Carolina



# ACTIVITIES



## TEEN-AGE CLUB

### OFFICERS

Left to right: Lugene Walker, Reporter; Mary Fannie Sartin, Secretary; Earl Harrison, Vice-President; Peggy Pateat, President; Geraldine Brooks, Treasurer; Barbara Bowes, Social Chairman; Isabelle Craok, Music Chairman.



## "Y" CLUB

### OFFICERS

Duke Foster, President; Velma Guthrie, Vice-President; Frances Haaper, Secretary and Treasurer; W.E. Niven and R.E. Sadler, Advisors.

Sponsored by  
PIEDMONT, HUGHES, AND LEA'S WAREHOUSE  
Danville, Virginia



## ACTIVITIES

### F. H. A. CLUB



#### OFFICERS

Left to right, first row: Louise Bray, Treasurer; Camilla Stuck, Pianist; Della Jane Belcher, Membership Committee; Isabelle Crook, President; Mary Fannie Sartin, Junior Advisor; Peggy Slaughter, Song Leader. Second row: Billie McLendon, Social Chairman; Lugene Walker, Secretary; Carolyn Wood, Membership Committee; Peggy Poteat, Social Committee; Margaret Thompson, Public Relations Committee; Mattie Jean Slaughter, Reporter; Geraldine Brooks, Ways and Means Committee. Third row: Mrs. C. C. Cole, Club Mother; Mrs. J. Gordon Wooten, Advisor; Mr. J. O. Gunn, Club Father.



### F. F. A. CLUB

#### OFFICERS

Left to right: R. E. Sadler, Advisor; Bill Turner, Reporter; O. M. Dabbs, Secretary; J. C. Powell, President; Allison Page, Vice-President; Samuel Cooper, Treasurer.

# ACTIVITIES



SPANISH  
CLUB

## OFFICERS

Jim Long.....President  
 Isabelle Croak.....Vice-President  
 Billy Johnson.....Secretary  
 Geroldine Braaks.....Treasurer  
 Mrs. Naomi Hodges.....Advisor

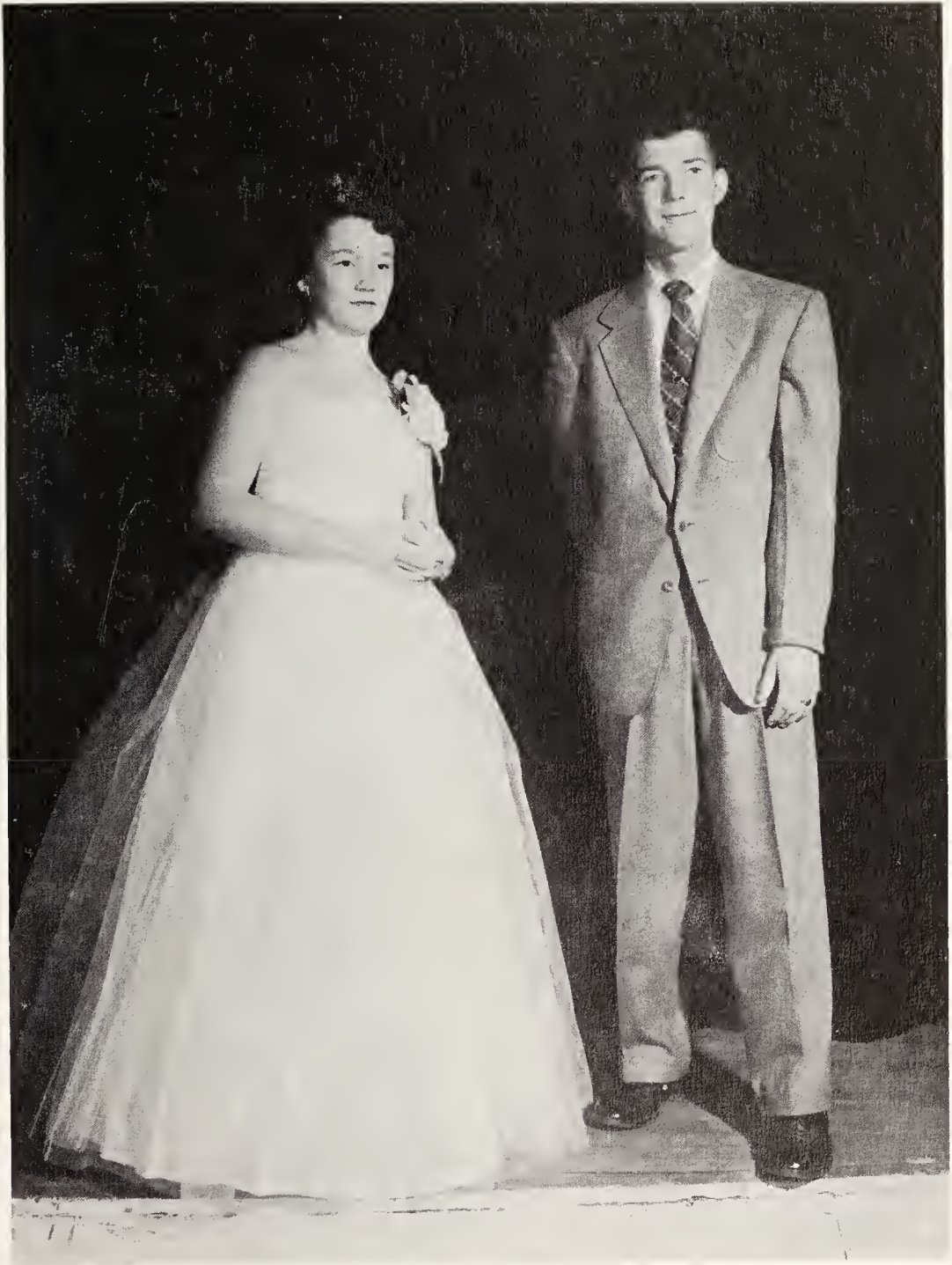
## BUS DRIVERS



Left to right, first row: Margaret Daniel, Esther Denny, Pencie Fuquoy, Evelyn Richmond, Velma Guthrie, Mitchell Walker. Second row: Jimmy Briggs, O.M. Dabbs, John Moc Wotlington, Barbara Bowes, J.C. Willis.



ACTIVITIES



HARVEST KING AND QUEEN

Isabelle Crook

F. L. Cobb, Jr.

**W. D. McMULLEN**

JEWELER

Yanceyville, N. C.

Compliments

of

**DAILEY MOTORS**

Yanceyville, N. C.

**ALEX'S CAFE**

Yanceyville, N. C.

Phone 2634

**PEOPLE'S HARDWARE AND  
CLOTHING STORE**

Farm and Household Hardware

Work and Sport Clothes

Yanceyville, N. C.

**HARRY E. BRAY**

INSURANCE AGENCY

Route 4

Danville, Virginia

Phone Yanceyville, N. C.

**GUNN TRACTOR**

and

**EQUIPMENT COMPANY**

Yanceyville, N. C.

Phone 2941

**YANCEYVILLE AUTO SALES**

CHESS MATLOCK

R. W. WILSON

Phone 2828

Yanceyville, N. C.



# AUTOGRAPHS

# AUTOGRAPHS





**Gunn Memorial Public Library**  
Yanceyville, N. C. 27379





