


SB21
.P343
1974-76



Digitized by the Internet Archive
in 2011 with funding from
LYRASIS Members and Sloan Foundation



EX LIBRIS
THE PENNSYLVANIA
HORTICULTURAL SOCIETY

SB 21
.P 343
1974-76

14576



YEARBOOK

July 1, 1973 — June 30, 1974



THE PENNSYLVANIA HORTICULTURAL SOCIETY
INDEPENDENCE NATIONAL HISTORICAL PARK
325 WALNUT STREET
PHILADELPHIA, PENNSYLVANIA 19106
WALnut 2-4801

EXECUTIVE COUNCIL

Herbert W. Goodall, Jr.
Chairman

Ernesta D. Ballard,
President

L. Wilbur Zimmerman,
Vice Chairman

Robert S. Ryan,
Vice-Chairman

Alan Crawford, Jr.
Treasurer

James P. McCarvill,
Secretary

William C. Burleigh
Frederic W. Clark
George R. Clark
John D. Corbit, Jr.*
William L. Day*
Barbara H. Emerson
Mrs. Eugene G. Grace
Mrs. Walter K. Howard
John S. Kistler
Mrs. Adolphus Lewis, Sr.
Richard W. Lighty
Mrs. John D. Lohmeyer
William D. MacDowell
Henry D. Mirick
Robert E. Montgomery

Craig S. Oliver
J. Liddon Pennock, Jr.
Mrs. Alfred W. Putnam
Lee M. Raden
Paul Rosenbaum*
Adolph G. Rosengarten, Jr.
John E. Strong
Mrs. Morris W. Stroud, 3rd
J. Franklin Styer
Mrs. S. Newbold van Trump
Mrs. E. Perot Walker
Mrs. John G. Williams
Mrs. Esther J. Winters
Minturn T. Wright, 3rd

*deceased

The Chairman and the President are *ex officio* members of all committees.

EXECUTIVE COMMITTEE

Herbert W. Goodall, Jr.
Chairman

George R. Clark
Alan Crawford, Jr.
Lee M. Raden
Paul Rosenbaum
Robert S. Ryan
Mrs. John G. Williams
L. Wilbur Zimmerman

NOMINATING COMMITTEE

William C. Burleigh,
Chairman
Alan Crawford, Jr.
Mrs. John D. Lohmeyer
J. Liddon Pennock, Jr.
Lee M. Raden
L. Wilbur Zimmerman

INVESTMENT COMMITTEE

Alan Crawford, Jr.
Chairman
William C. Burleigh
George R. Clark
Minturn T. Wright, 3rd

FROM THE CHAIRMAN

As you read the pages that follow, you will see that this has been an eventful year for the Pennsylvania Horticultural Society, one of the most eventful in the Society's 147-year history.

It has been a year of growth, of change, of challenges, and yes, of disappointment.

Growth is reflected in the increased number of activities offered to members this past year; in the record breaking number of visitors to the flower show; in the increased number of visitors, both members and nonmembers, to our headquarters; in the heavy volume of telephone calls, which sometimes overwhelm our switchboard even though it has been enlarged, and by the continuing gains in our membership.

Conversely, three valuable members of the Executive Council died

this year: John D. Corbit, Jr., William L. Day, and Paul Rosenbaum. Mr. Day and Mr. Rosenbaum had been deeply involved in planning for the bicentennial and their contributions were significant. Dr. Corbit, a knowledgeable and dedicated plantsman, served on several committees.

The change is in our administrative structure. The Society by-laws were altered adding two new positions, namely Chairman and Vice-Chairman of Council, and removing a limitation on the term of President. Ernesta Ballard, who has served as our chief administrative officer for 10 years, was elected in October 1973, becoming the Society's first salaried President.

The challenges arose primarily from two sources. One, as indicated above, was the very healthy upward trend in the demand for our established horticultural services and the use of our facilities. And in this connection, I should mention how pleased we were that this year our President was awarded the Thomas Roland Medal by the Massachusetts Horticultural Society for exceptional skill in horticulture.

The second source of challenge had to do with our heavy involvement in a number of projects related to the nation's bicentennial, now less than a

year and a half away. And it was in this area that we encountered our major disappointment.

I am speaking of the untimely demise of Philaflora. Despite the unfortunate outcome of all the work put into the project by the PHS staff and many volunteer members, it is my firm belief that their efforts have enhanced the reputation of the Society in many quarters where we were little known in the past.

The Pennsylvania Horticultural Society is probably the largest and strongest regional horticultural society in the country. You will find details of our ongoing bicentennial projects and our regular activities elsewhere in this report. Therefore, I shall touch here on but one aspect of these diverse activities, one that is common to all and is the society's major strength.

It is the dedicated, knowledgeable and effective work of the PHS staff and of the hundreds of members who, on a volunteer basis, serve well the horticultural interests of the Delaware Valley. On behalf of the Executive Council, I thank them for their unselfish support of the Society.

Herbert W. Goodall, Jr.
Chairman



ERNESTA D. BALLARD
President

FROM THE PRESIDENT

This year marks the completion of a decade in our headquarters building in the Independence National Historical Park. Members will recall that we occupy the headquarters rent-free in return for maintenance of the adjacent 18th Century Garden, the greenhouse, the small backyard and the building itself. As an additional consideration to the Park, the Society stages educational exhibits and shows in the ground floor exhibit space.

During the course of the year, upon recommendation of the Long Range Planning Committee, significant alterations were made on the second floor of the building, expanding the library shelving by more than 200 feet and permitting more efficient use of the rest of the space.

We are most grateful to our co-tenants, the Philadelphia Society for Promoting Agriculture, for granting us the use of their room on the third floor. This additional space, together with the alterations referred to above, has enabled us to accommodate the enlarged staff required for our expanded programs.

In June 1973, Philadelphia '76, the City's official bicentennial planning agency, asked PHS to prepare a feasibility report for an outdoor flower show modeled on those held in various European cities. The resulting report was completed in September 1973 and outlined a proposal for a five-month "horticultural entertainment" to be known as Philaflora, to be budgeted at about \$11,000,000 and to be staged on a 58-acre site in Fairmount Park, adjacent to the City's planned Plant and Garden Center and to Memorial Hall. The proposal contemplated that PHS would plan and operate Philaflora.

The proposal was accepted by Philadelphia '76 and, subsequently, the Society devoted much time and effort to developing plans for the project. By January, Philaflora had come to be regarded as a major attraction for tourists in 1976. Believing that such an operation was outside its capabilities,

the Society withdrew as manager but continued as horticultural consultant. In June 1974, Philadelphia City Council voted not to fund Philaflora, thus bringing about its demise.

Despite disappointment in the final outcome, the Society can look back on Philaflora with pride and satisfaction. During the planning process, the staff and the members working on the project established new and valuable relationships with experts in many fields related to the Society's other programs. In addition, joint efforts to develop the project strengthened the basis of cooperation between the Society and the Fairmount Park Commission.

In all its other programs and activities, the Society has had a good year. The enormous attendance at the Philadelphia Flower & Garden Show improved our financial statement, but also brought us to the realization that important changes will have to be made to accommodate the crowd next year. I have included detailed information about these programs and activities in the report that follows.

Ernesta D. Ballard
President



The PHS Executive Council



Free PHS plant clinic was held in the Azalea Garden in Fairmount Park as part of the Festival '74 sponsored by the Greater Philadelphia Cultural Alliance.

PROGRAM

LONG RANGE PLANNING

Committee

Robert S. Ryan,
Chairman

George R. Clark
William L. Day
Henry D. Mirick
Phyllis G. Williams

Following an invitation from the City Managing Director, the committee gave serious consideration to his suggestion that the Society move its operation to the proposed Plant and Garden Center in Fairmount Park. Every aspect of the planned facility was investigated, and

an independent study of five comparable operations was performed. The clear consensus was that the Society should not give up its inexpensive headquarters in the Independence National Historical Park at this time. The Committee therefore recommended that the Society put aside any plans to move, and that it continue to devote its attention to improving the use of its present building through relatively simple alterations. The Council accepted the Committee's recommendations and the Society now expects to stay at 325 Walnut Street for the foreseeable future.

This completed the assignment of the Long Range Planning Committee, which has been dissolved.

MEMBERS' ACTIVITIES

Committee

Mrs. E. Perot Walker
Chairwoman

William C. Burleigh
(1972-73 Chairman)

John S. Kistler

Mrs. John D. Lohmeyer

Mrs. Morris W. Stroud, 3rd

Mrs. Walter K. Howard

The Society offered more activities during the 1973-74 period than during any other. In addition to the increased number of activities, experimental cooperative programs were worked out with Morris and Tyler Arboretums for the convenience of members in the suburbs. These programs were well attended and are now being evaluated to determine the extent of mutual benefit to staff and members of the participating institutions. (The activities listed below were planned in 1972-73.)

October

Brian M. Lamb

Cactus

(Joint program with the Philadelphia Cactus and Succulent Society)

John A. Borneman, Jr.

Potted Friends and Little Rose Show

(Joint program with the Philadelphia Rose Society)

William S. Stewart

Pacific Tropical Botanical Garden

Niche Symposium for 1974 Flower and Garden Show

Horticultural Classes Symposium for the 1974 Flower and Garden Show

Ann Conroy

Container Crafts

(Joint program with the Philadelphia Chapter, Indoor Light Gardening Society)

John Yoshio Naka

Bonsai Demonstration

(Joint meeting with the Pennsylvania Bonsai Society)

November

Garden Supplies Auction

(Joint meeting with the Philadelphia Rose Society)

Mrs. Julian W. Hill

Rhododendron nakahari

(Joint meeting with the Philadelphia Chapter, American Rhododendron Society)

Ernesta D. Ballard

Indoor Gardening

Doris Froning—Ely Johnson

Mame Bonsai

(Joint meeting of the Pennsylvania Bonsai Society)

Jack Golding

The Ultimate Light Garden

(Joint meeting with the Philadelphia Chapter of the Indoor Light Gardening Society)

December

Holiday Party for Juniors

Lectures, Lecture Demonstrations & Symposiums

September

Evelyn Hett

Preparation for exhibiting in a show

(Joint meeting with the Philadelphia Chapter of the Rhododendron Society)

Bernice Makin

Flower Arranging

(Series of four lectures given jointly with the Morris Arboretum)
(Series of six lectures at PHS)

Dee Peck—Bernard Weiner

Commercial and custom-made fluorescent light fixtures

(Joint meeting with the Philadelphia Chapter, Indoor Light Gardening Society)

Bernice Makin

Flower Arranging

January

- Lee Lester
Home Greenhouse
(Joint lecture with the Tyler Arboretum)
(Series of three lectures jointly with the Morris Arboretum)
- Julia Finette Davis
Colonial Williamsburg
- Leroy Svec
Physiology of Lilies
(Joint meeting with the Middle Atlantic Regional Lily Group)
- Panel Discussion
Horticultural Fundamentals
(Joint meeting with the Philadelphia Chapter, Indoor Light Gardening Society)
- Martha L. Garra
Planning the Herbaceous Border
(Two series of five lectures jointly with the Morris Arboretum)
- Charles W. Rogers, Jr.—John Griswold
A Day in the Tropics at the Philadelphia Zoo

February

- Edward L. Lindemann
Basic Garden Design
(Series of two lectures jointly with the Morris Arboretum)
- Ernesta D. Ballard
Indoor Gardening
- Gordon Brandes
Stop the Headlong Plunge into Ugliness
(Joint meeting with the Philadelphia Chapter, American Rhododendron Society)
- Felton Jones
Preparing Bonsai for the Show
(Joint meeting with the Pennsylvania Bonsai society)
- Julie Morris
Terrariums
(Joint meeting with the Philadelphia Chapter, Indoor Light Gardening Society)

March

- John A. Borneman, Jr.—Frank Wuest
Budding Roses
(Joint program with the Philadelphia Rose Society)
- Martha L. Garra
Gourmet Gardens
(Lecture jointly with the Tyler Arboretum)
(Two lectures jointly with the Morris Arboretum)
- Lincoln Foster
Dwarf Rhododendrons
(Joint program with the Philadelphia Chapter of the American Rhododendron Society)
- Ernesta D. Ballard
Plants from Seed
(Two lectures jointly with the Morris Arboretum)
- W. Earle Hamilton
Trouble free plants for growing under lights
(Joint program with the Philadelphia Chapter of the Indoor Light Gardening Society)
- Edward L. Lindemann
City Gardening

April

- Ernesta D. Ballard—Julie Morris
House Plant Course
(Two series of three lectures)
- Julie Morris
Library Round Table
- Stanley Johnson
Roses vs. Dahlias
(Joint program with the Philadelphia Rose Society)
- F. Chase Rosade
Introduction to Bonsai
(Series of three lectures jointly with the Morris Arboretum)
- Joanna Reed—Moderator
Herb Panel
- Philip A. Livingston
Mr. and Mrs. Kenneth Miller

Costa Rica

(Joint program with the Philadelphia Chapter, American Rhododendron Society)

Dorothy Young

Saikei

(Joint lecture with Tyler Arboretum)

Toy Sato

The Art of Viewing Stones

(Joint meeting with the Pennsylvania Bonsai Society)

Patrick Nutt

The Wide World of Gesneriads

(Joint meeting with the Philadelphia Chapter, Indoor Light Gardening Society)

May

Frank Wuest

Preparing Roses for the Show

(Joint program with the Philadelphia Rose Society)

David Melrose

Pruning

(Demonstration given jointly with the Morris Arboretum)

Maureen Platt

Cacti and Succulents

(Joint meeting with the Philadelphia Chapter of the Indoor Light Gardening Society)



PHS members relax between garden visits in Newport, Rhode Island.

Clinics

September

Gordon Brandes
Lawns (Joint clinic with Morris Arboretum)

PHS staff
Plant Clinic

June Vail
Pressed Flower Pictures

October

Noreen McCoy
Bulb Forcing (Joint clinic with the Morris Arboretum)

PHS Staff
Plant Clinic

Julie Morris
Terrariums

November

Julie Morris
Terrariums (Joint meeting with Tyler Arboretum and joint meeting with Morris Arboretum).

December

Edward L. Lindemann, Noreen McCoy, Julie Morris
Wreath making (Joint clinic with Morris Arboretum)

Field Trips

October

June Vail
Pine Barrens of New Jersey

February

Voyage to Mayaluum

April

Betty Derbyshire
Wild Flower Field Trip in Montgomery County

June

June Vail
Pine Barrens of New Jersey
Charles Rogers, horticulturist
Philadelphia Zoo

Robert C. McConnell, director
Tour of Fairmount Park

Other Activities

December

Candlelight Stroll of Society Hill and Reception at PHS.

Garden Visits

August

Garden Visits in Newport, Rhode Island

Mr. and Mrs. Norton Adams
Mr. and Mrs. Hugh D. Auchincloss
The Honorable and Mrs. Wiley T. Buchanan, Jr.

Mr. and Mrs. Theodore Grosvenor
Vice Admiral and Mrs. Stuart H. Ingersoll

Mr. and Mrs. Richard Sheffield
Mrs. Theodore S. Sturtevant

April

Garden Visit in Bucks County
Dr. and Mrs. H. Vernon Lapp

May

Garden Visit in Rydal, Pennsylvania
Mr. and Mrs. H. Thomas Hallowell, Jr.

Garden Visits in Moorestown, New Jersey

Mr. and Mrs. William L. Collins
Mrs. T. L. Deren

Mr. and Mrs. Frank K. Keleman



Horticultural therapist Alice Burlingame forcefully makes a point during her presentation.



Teaching the teachers to teach horticulture in the city schools.



City gardens in the summer of 1973.

COMMUNITY ACTIVITIES

Committee

Lee M. Raden,
Chairman

Mrs. James C. Horner
Mrs. E. Perot Walker
Mrs. John S. Kistler
Mrs. Adolphus Lewis, Sr.
Mrs. Esther J. Winters
John E. Strong
Minturn T. Wright, III

School Programs

Teacher Training

Continuing in the direction set last year, the Society quadrupled its programs in the Philadelphia public schools to involve well over 4000 students. More than 130 elementary and middle school teachers attended a series of eight monthly training sessions at PHS, learning a different project each time and receiving materials to take back to their classes. Students from more than 60 schools made desert landscapes, pine cone trees, and terrariums. They learned how to propagate foliage plants, force paper whites, and start vegetable and flower seeds in the spring.

The program was run in close cooperation with the Office of Science Education of the School District of Philadelphia and received praise from School District Officials.

Horticultural Curriculum Guide

Twenty selected teachers in the Philadelphia public schools spent the year testing the Society's new curriculum guide, *Indoor Gardening in the Classroom*. Approved by the School District of Philadelphia's Office of Curriculum Planning and Development, the guide is a series of experiments and horticultural projects designed to show students in the upper elementary and middle grades how and why plants grow, and to enable them to fill their classrooms with greenery. Publication is planned for 1975.

A small committee of these teachers met with the Society's educational coordinator to revise the

guide based on their experiences with it; when they have finished PHS will publish the guide and make it available on a large scale.

Evening School Courses

Staff members planned and taught a 10 week course in container gardening for the Harriton High Evening School in the spring and fall. The course covered both indoor and outdoor plants. PHS arranged an eight-week course in apartment gardening for the Junto School.

Room to Grow Film

The PHS horticultural careers film, *Room to Grow*, was sent free of charge to 30 schools and organizations in all parts of the country from California to Florida. In addition, the copy turned over to the Vocational Guidance Department of the School District of Philadelphia was used in 89 classes in 22 schools. More than 3000 students viewed the film and learned of the various career opportunities in the field of horticulture.

Philadelphia Summer Gardens

1973 Program

Two vegetable garden programs for young people in the city were set up and run by the Society during the summer of 1973. More than 100 young gardeners met several times each week and tended their plots, planting and harvesting radishes, tomatoes, greens, zucchini and zinnias.

1974 Program

Drawing on the experiences of the 1973 Program, work was started in the winter with several other organizations to establish a series of community vegetable gardens in all parts of Philadelphia. Working with the City Department of Recreation's Neighborhood Parks Program the Society located 12 interested community groups and helped them clear vacant lots in their area. Bell Telephone company provided topsoil, and by May nearly 400 city farmers were at work in their gardens.

Summer Garden Workshop 1973

The eighth annual Summer Garden Workshop was run in cooperation with the Morris Arboretum of the University of Pennsylvania at the grounds of the Arboretum. Thirty-five young people attended the sessions. The workshop was held Monday through Thursdays for a nine-week period.

Run successfully as a pilot project for the past eight years, the administration of the workshop was handed over to the Arboretum for the summer '74 season. PHS will continue to act as consultant and the PHS staff will continue to present special programs.

Counselors:

Wendy Cherner
Michelle Coleman
Andrea Daft
David Hanlon
Sondra Staller

Horticultural Therapy

A four-part Horticultural Therapy training program was designed and conducted by the PHS staff. A group of professionals, paraprofessionals and volunteers met for two hours each Tuesday evening during September. Horticultural projects for handicapped, geriatric and psychiatric patients were discussed.

Alice Wessels Burlingame, nationally known horticultural therapist, gave an open lecture on Horticultural Therapy in October to conclude the September sessions.

Parkway Program

For the fourth year, PHS conducted its "Green In the City" class for the Parkway Program of the School District of Philadelphia. Twenty students from three of the Parkway Units participated in the class designed to introduce students living in an urban environment to horticulture. Plant growing projects, field trips and classes with horticulturists in the various fields were

planned throughout the year. Several of the students worked as part of the PHS work crew for the 1974 Philadelphia Flower and Garden Show.

Greening of Philadelphia

The Society engaged the planning firm of Decker & Borowsky to prepare a report containing an inventory of public and private organizations engaged in neighborhood beautification and the planting activities in the City of Philadelphia. This report is being used as a catalyst to affect further cooperation between these organizations. As an immediate outgrowth, the Society is working on a publication to be entitled "The Philadelphia Area Green Pages: A Handbook of Information, Tools and Resources for the Greening of Philadelphia."

Free Plant Clinics

More than 500 people attended the eight free plant clinics held on Sunday afternoons during the past year. The horticultural staff was on hand to answer questions and to diagnose plant problems. In addition, films from the PHS Library were shown.

BICENTENNIAL PLANNING

The Society, mindful of its link to the past, its affiliation with the Independence National Historical Park and its place in the cultural life of the city, began its bicentennial planning well in advance of the celebration year. Before 1973, we generated and developed ideas. In July 1973, additional staff members were added to coordinate the plans and to assist the committees and existing staff in the execution of the various projects.

During the year, the Council voted to commit up to \$115,000 of its resources toward the funding of these projects. In addition, proposals have been presented to various federal agencies, to local foundations and to corporations.

10,000 Trees Committee

C. Stuart Brown
Chairman

Mrs. John W Appel
Mrs. Paul Betancourt, Jr.
Frederic W. Clark
John J. Morley
Mary Clay Reed
Paul Rosenbaum
Mrs. Richard T. Saler
R. Terry Schnadelbach
Mrs. Walter Smedley
Kurt A. Solmssen
Robert Whyte

One of the Society's most ambitious projects is to raise enough money to plant 10,000 trees in 34 parks throughout Philadelphia before 1976. The committee has helped to organize special projects with schools, garden clubs and other organizations to raise funds for the project. A wide scale public relations campaign has brought the program to the attention of thousands of Delaware Valley residents.

Twenty-five hundred contributions totaling more than \$70,000 were made to the planting fund. As a result, 1,500



Two PHS bicentennial projects in one: Filmmaker Brian Kellman records a tree planting for the 10,000 Trees Project. The footage will be used as part of PHS bicentennial film about trees.

trees were planted in 13 city parks. The names of all contributors are on file in the Society offices. All gifts of \$10 or more are placed on permanent record in Memorial Hall.

Bicentennial Film Committee

Lee M. Raden,
Chairman
George Borowsky
Herbert W. Goodall, Jr.
Mrs. James C. Horner
Mrs. John S. Kistler
Mrs. Adolphus Lewis, Sr.
Henry E. Putsch
Paul Rosenbaum
Mrs. Esther J. Winters

During the fall of 1973, an enthusiastic and conscientious committee and several staff members interviewed 16 film makers. During the course of the interviews, the committee solidified the idea of what it wanted and ultimately commissioned Brian Films Inc. to produce a film that will emphasize the importance of trees to the quality of life in the cities and towns of the Northeastern United States. Shooting began in April; the film is scheduled for completion in September 1975.

Symposium Committee

Richard W. Lighty,
Chairman
Elizabeth Chew Bennett
Julia F. Davis
Barbara H. Emerson
L. Wilbur Zimmerman

The Bicentennial Symposium, "America's Gardening Legacy—A Taste for Pleasure," will consist of six sessions scheduled throughout the growing season. The sessions will be held at horticulturally significant locations in the Delaware Valley. The Symposium Proceedings will be printed at the end of the Bicentennial year.

Headquarters Exhibit Committee

Barbara H. Emerson,
*Chairwoman, Library
Committee*
Mrs. H. Newbold Van Trump, Jr.
*Chairwoman, Exhibits
Committee*

and members of the Library
and Exhibits Committees

The exhibit will focus on Philadelphia's role in the first 200 years of American horticulture. Books, catalogs, charts, related plant and other materials will be exhibited.

Philaflorea and The Greening of Philadelphia

Philaflorea Planning Committee

Robert S. Ryan
Chairman
William C. Burleigh
William L. Day
Herbert W. Goodall, Jr.
Mrs. John D. Lohmeyer
William D. MacDowell
Henry D. Mirick
Mrs. John G. Williams
George Borowsky,
Consultant

The brief history of Philaflorea is included in the statements by the Chairman and the President at the beginning of this report. During its course, the Society established strong ties with Philadelphia '76 and expects to continue working with it in achieving significant results in the greening of the city for 1976 and the years following.



FLOWER SHOWS

1974 PHILADELPHIA FLOWER & GARDEN SHOW

Philadelphia Civic Center

Sunday, March 10 through Sunday, March 17

Attendance: 166,000

Despite an energy shortage, which brought about gas rationing in Pennsylvania and neighboring states, the Philadelphia Flower & Garden Show set a new attendance record.

The show's central feature of

lagoons and fountains, sponsored by the Society and staged by J. Franklin Styer's nursery, was impressive. The Show's major exhibits continued to show a high degree of excellence. Interest in the competitive classes continues to grow, no doubt reflecting the burgeoning interest in indoor gardening. A record high of 170 people exhibited their plants in the horticultural classes.

The 1974 Show was the ninth managed solely by the Pennsylvania Horticultural Society and held at the Civic Center.

Committees

Milton J. Shapp, Governor of
Pennsylvania, *Honorary Chairman*
Frank L. Rizzo, Mayor of Philadelphia,
Honorary Chairman
L. Wilbur Zimmerman,
Chairman

Advisory

Harry R. Belinger
Robert W. Crawford
John O. Downey
John D. Healy
Thacher Longstreth
William W. Marvel
I. Ezra Staples

Executive

L. Wilbur Zimmerman,
Chairman
Mrs. Eugene G. Grace,
Vice-Chairwoman
George R. Clark
Alan Crawford, Jr.
Herbert W. Goodall, Jr.
Mrs. Henry B. King
Henry D. Mirick
J. Liddon Pennock, Jr.
Mrs. Alfred W. Putnam
Paul Rosenbaum
Bradshaw Snipes

Steering

Ralph Bartholomew
Herbert Bieberfeld
Beverly Buzas
Edward Collins
Eloise Danenhower
Gordon Eadie
Herman Hellberg
Mrs. Walter K. Howard
William C. Judd
Mrs. John D. Lohmeyer
Robert McConnell
Raymond Morris
Lee M. Raden
James K. Rathmell, Jr.

Design

Mrs. Henry B. King
George Manaker
Henry D. Mirick
J. Liddon Pennock, Jr.
Bruce Robertson

Roland Taylor
Albert Vick, Jr.

Judges and Awards

Mrs. Alfred W. Putnam,
Chairwoman
Mrs. Hubert P. Earle,
Vice-Chairwoman
Mrs. Nathaniel R. Bowditch
Mrs. Henry B. Coxe, 3rd
Mrs. John W. Eiman
Mrs. Horace C. Jones, 2nd
Mrs. Laird U. Park, Jr.

Hospitality

Mrs. Edward E. Cullen, 3rd,
Chairwoman
Elizabeth C. Bennett
Mr. & Mrs. Morris R. Brownell
Cinda Carter
Mrs. Preston Carter
Mr. & Mrs. Philip J. Chapman
Richard W. Hess
Mr. & Mrs. James C. Hornor
Mrs. Milton Laden
Mr. & Mrs. Robert K. McInnes
Mr. & Mrs. George A. Reed, Jr.
Mrs. Victor J. Roberts
Mr. & Mrs. Wyllys Terry
Mr. & Mrs. W. Beaumont
Whitney, 2nd
William H. Wood, 3rd

Competitive Classes

Mrs. Henry B. King,
Chairwoman
Mrs. John D. Lohmeyer,
Vice-Chairwoman

Arrangement Classes

Mrs. Lawrence Drake,
Chairwoman
Mrs. Norman S. Bemis,
Vice-Chairwoman
Mrs. Duffield Ashmead, 3rd
Mrs. Charles Becker, Jr.
Mrs. Lloyd M. Coates, Jr.
Mrs. Mercade A. Cramer, Jr.
Eleanor W. David
Mrs. Harry C. Groome
Mrs. Adolph A. Hirstius
Mrs. James C. Hornor
Mrs. William Ward, 4th
Mrs. Robert Warth
Mrs. Phoebe L. Welsh

Garden Classes

Mrs. Nicholas Biddle, Jr.,
Chairwoman
Mrs. J. Brooks Semple,
Vice-Chairwoman

Room, Table & Balcony Classes

Mrs. George W. Schelling,
Chairwoman
Harriet M. Saunders,
Vice-Chairwoman
Mrs. Armin C. Frank,
Vice-Chairwoman

Horticultural Classes

Mrs. G. Morris Dorrance,
Chairwoman
Mrs. W. C. Buchanan,
Vice-Chairwoman
Mrs. John G. Williams,
Vice-Chairwoman
Mrs. Samuel D. Allen
Mrs. Ingersoll Benson
Mrs. James F. Bodine
Mrs. Edward P. Bromley, Jr.
William C. Burleigh
Mrs. Bukk G. Carleton, 3rd
Mrs. Preston D. Carter
Mrs. John R. Clark
Mrs. S. C. Cleaves
Mrs. Edward E. Cullen, 3rd
Mrs. G. Jeremy Cummin
Mr. & Mrs. William P. Eckfeldt

Mrs. Richard Edgren
Mrs. Henry C. Evans
Mrs. Thomas Fisher
Mrs. John M. Fogg, Jr.
Mrs. Bernard W. Fox
Mrs. F. Otto Haas
Mr. & Mrs. Walter K. Howard
Mrs. Charles Ingersoll
Mr. & Mrs. Sidney Keith
Mrs. W. Roy Kolb
Helen LeBlond
Mrs. W. R. Mackinney
Mrs. Edward W. Madeira
Mrs. Alan McIlhenny
Mrs. J. Don Miller
Mrs. Andrew W. Porter
Robert Preucel
Lee M. Raden
Mrs. J. Pancoast Reath
Gainor Roberts
Ruth Robinson
Mrs. Robert S. Ross
Mrs. Edward Starr, 3rd
Mrs. John Thacher
Mrs. H. Eastburn Thompson
Mrs. Charles Truitt
Mrs. E. Perot Walker
Mrs. Nelson D. Warwick, Jr.
Mrs. W. Cooper Willits
Mrs. Lindsay Wolfe
Mrs. Edward F. R. Wood, Jr.



Horticultural Clerks

Mrs. C. Madison Riley,

Chairwoman

Mrs. Edward C. Rorer,

Vice-Chairwoman

Nomenclature

Barbara H. Emerson

John M. Fogg, Jr.

Office and Staging Volunteers

Doris W. Atkinson

Mary Calwell

Mrs. Preston D. Carter

Mrs. Frances L. Harrigan

Mrs. John S. Kistler

Mrs. Milton Laden

Mrs. H. Vernon Lapp

Mrs. Donald R. Lenton

Mrs. D. J. McNamara

Mrs. Ward C. Miller

Mrs. Victor J. Roberts

Mrs. Randolph M. Slater

Elizabeth B. Wheeler

Exhibitors and Awards Lunch

Mrs. Alfred W. Putnam,

Chairwoman

Mrs. Hubert P. Earle

Mrs. Herbert W. Goodall, Jr.

Mrs. John D. Lohmeyer

Major Exhibitors

Nursery and Commercial

Greenhouses

County Line Landscape Nursery

De Wilde's Rhodo-Lake Nursery

Gale Nurseries

Grant-Leighton Associates

Hansen Brothers Nurseries, Inc.

Hansen's Ground Covers

Judd's Hollylan Nurseries

Muehlmatt's Greenhouses

Red Oak Nurseries, Inc.

Rose Valley Nurseries

Snipes Landscape and Garden Center

Star Roses

J. Franklin Styer Nurseries

Vick's Wildgardens, Inc.

Whitemarsh Landscapes, Inc.

Educational

Delaware Valley College of Science
and Agriculture

Eastern Montgomery County Area
Vocational-Technical High School
International Shade Tree Conference,
Inc.

George Milstein

Pennsylvania Nurserymen's
Association

The Pennsylvania State University

Rosade Bonsai Studio

Walter Biddle Saul High School of
Agricultural Sciences

Temple University, Ambler Campus

U.S. Department of Agriculture

APHIS-Plant Protection and
Quarantine Program

Floral

Allied Florists of Delaware Valley, Inc.

H.H. Battles, Inc.

W. Atlee Burpee Company

Delaware County Pot Plant Growers

Florists' Transworld Delivery
Association

David Lutt Florist

Meadowbrook Farm

Middle Atlantic Carnation Growers

Muller Society Hill Florist

George Robertson and Sons, Inc.

Roses, Inc.

Rucker's Greenhouses

Wm. H. Starke & Son, Inc.

Andrew H. Strang, Inc.

Waldor Orchids, George Off and Sons

Plant Societies

African Violet Society of Philadelphia

American Rhododendron Society

American Rock Garden Society

Indoor Light Gardening Society
of America

Pennsylvania Bonsai Society

Philadelphia Area Daffodil Society

Philadelphia Cactus and Succulent
Society

Southeastern Pennsylvania Orchid
Society

Special Exhibits

Bucks County Audubon Society

Eastern Pennsylvania Sod Growers
Association

Fairmount Park Commission

Friends Hospital

Ikebana International

Morris Arboretum
Pennsylvania Christmas Tree
Growers' Association
Pennsylvania Roadside Council, Inc.
The Pennsylvania Society for the
Prevention of Cruelty to Animals
Philadelphia Fire Department
Philadelphia Zoological Garden

1973 HARVEST SHOW

Memorial Hall, Fairmount Park
Saturday and Sunday, September 29
and 30

Held in cooperation with the
Fairmount Park Commission and staged
with the cooperation of the Philadelphia
Area Judges Council.

The Harvest Show is one of the few
of its kind. It is an opportunity for
horticulturists to show the fruits of a
growing season; none of the plants are
forced. It is an intimate show, one
where the viewer can wander quietly
without the hustle and bustle of the
larger show and can study the plant
materials without pressure. Visitors
always deem it "a jewel of a show."
Almost 6,000 people visited the 1973
show.

Committee

Mr. and Mrs. S. N. van Trump, Jr.
Chairpersons

Mrs. Clarence W. Alexander
Mrs. Charles E. Barnes, Jr.
Mrs. George C. Beebe
Wilbur Beck
Mrs. Louis E. Bourquin
Mrs. Joseph Bray
Mrs. Walter Bringolf
Mrs. William C. Buchanan
Mrs. Watson S. Campbell
Mrs. Preston D. Carter
Mrs. Allen Corson, Jr.
Mrs. Warren E. Crane
Mrs. Francis M. Day
Mrs. William P. Eckfeldt
Mr. & Mrs. Thomas B. Everist
Mrs. Morton Fellheimer
Mrs. Thomas Fisher, Jr.
Mrs. Robert Galloway
Mrs. George Rodney Haines
Mrs. Francis L. Harrigan
Mrs. George A. Hewitt
Mrs. John S. Kistler
Mrs. William Lappin
Mrs. John R. Larkin
Mrs. Marie Louise Lee
Mrs. D. Rice Longaker



Mrs. J. West Loveland
 Mrs. Albert T. Maymon
 Mrs. Robert J. McLoud
 Mr. & Mrs. James A. McQuail, Jr.
 Eric Meitzner
 Mrs. John Metz, 3rd
 Mrs. Ward Miller
 Mrs. Clark R. Morris
 Mrs. Ernest Morton
 Mr. & Mrs. Ralph B. Parks
 Mrs. Carl Ray
 Mr. & Mrs. George A. Reed
 Mrs. Victor J. Roberts
 Mrs. D. Allen Sampson
 Mr. & Mrs. Frank Seymour
 Mrs. George F. Sullivan
 Mrs. Lyle R. Tanner
 Mrs. William Underwood
 Mrs. W. Andrew Wright
 Mrs. George E. Yerger, Jr.
 Mrs. Rudolf Zaprauskis

Garden Club Sponsors

The Garden Club of Bala-Cynwyd
 Chestnut Hill Garden Club
 The Country Gardeners
 The Garden Class of the Woman's
 Club of Downingtown
 Drexelbrook Garden Club
 Four Counties Garden Club
 The Gardeners
 The Garden Workers
 Greene Countrie Garden Club
 The Greenhouse
 Hill and Hollow Garden Club
 Huntingdon Valley Garden Club
 Garden Club of Lansdowne
 The Club of Little Gardens of
 Malvern
 Locksley Garden Club
 Martha Washington Garden Club
 Norristown Garden Club
 Old Eagle Garden Club
 Old York Road Garden Club
 Outdoor Gardeners
 Penn Valley Garden Club
 The Planters Garden Club
 Pottstown Garden Club
 Providence Garden Club of
 Pennsylvania
 Ridley Manor Garden Club

Rose Tree Gardeners
 The Seedlings Garden Club
 Society of Little Gardens
 Spade and Trowel Garden Club of
 Kennett Square
 Garden Club of Springfield
 Spruce Hill Garden Club
 Suburban Garden Club
 The Town Gardeners
 Trevoise Horticultural Society
 Twin Valleys Garden Club
 Garden Class of Woman's
 Community Club of Uwchlan
 Valley Garden Club
 Warrington Garden Club
 Wayne Woods Garden Club
 The Weeders
 West Chester Garden Club
 West Chester Planters
 West Grove Garden Club

Major Exhibitors

African Violet Society of
 Philadelphia
 The William Penn Branch of the
 American Begonia Society
 American Rock Garden Society,
 Delaware Valley Region
 Arboretum of the Barnes Foundation
 Charlotte Liebig Archer
 Mrs. Sergeant Brewster
 W. Atlee Burpee Company
 Delaware Valley College
 of Science and Agriculture
 William A. Dyre
 Fairmount Park Commission
 Fairmount Park, Recreation Division
 Fort Washington Garden Mart
 Mrs. Richard P. Fry
 Garden Club Federation of
 Pennsylvania
 Heinrich A. Haist
 Herb Society of America,
 Philadelphia Unit
 Hill and Hollow Garden Club
 Ikebana International
 Indoor Light Gardening Society,
 Philadelphia Chapter
 Ely J. Johnson
 Mrs. John S. Kistler
 Mrs. Raymond E. Knauff

Linville Orchards
Joseph J. Mammino
Larry Mammino
Meadowbrook Farm
Men's Garden Club of Delaware
Valley
Middle Atlantic Carnation Growers
Morris Arboretum
The Neighborhood Garden
Association of Philadelphia
Outdoor Gardeners
Palette Gardens
Pennsylvania Bonsai Society
Pennsylvania Department of
Environmental Resources'

Bureau of Forestry
Penn Valley Garden Club
Philadelphia Museum of Art
Fairmount Park House Guides
Philadelphia Zoological Garden
Mrs. F. M. Precopio
Ridley Manor Garden Club
Roses, Inc.
Schuylkill Valley Nature Center
Mrs. George W. Stott
Southeastern Pennsylvania Orchid
Society
Southmeadow Fruit Gardens
Twin Valley Garden Club

Members select a free plant after the Annual Meeting.





Open House at Society headquarters after the Candlelight Stroll.

HEADQUARTERS EXHIBITS AND SHOWS

CHRISTMAS SHOW

December, 1973

The Christmas Show is usually one of the most imaginative and popular shows staged at Society headquarters.

Exhibitors are ingenious in their use of every conceivable kind of natural material including seeds, pods, dried flowers, fruits, nuts, wood or other materials. These are used to decorate the tree, construct creches, make wreaths, kissing balls, and wall hangings.

Members were able to visit the exhibit throughout December. They were also invited to see the show on the evening of the area Candlelight Stroll and to return to the Society headquarters for our annual open house.

Committee

Mrs. William P. Eckfeldt,
Chairwoman
Mrs. Charles E. Barnes, Jr.
Mrs. Howard Boyd
Mrs. Thomas G. Brown
Laura Bulmer
Mrs. Preston D. Carter
Mrs. Edward Cullen
Mrs. Nelson Dewey
Mrs. Hubert P. Earle
Mrs. Arthur Hacker, 3rd
Mrs. Wilson B. Harkins
Mrs. J. Slater Henry
Mrs. Adolph A. Hirstius
Mrs. Walter W. Hutcheson
Mrs. Milton Laden
Mrs. H. Vernon Lapp
Mrs. William M. Lemmon
Mrs. D. Rice Longaker
Mrs. W. J. MacNeish
Mrs. Kenneth G. Matheson
Mrs. Alan McIlhenny
Mrs. William H. Naylor
Mrs. John R. Park
Mrs. D. Alan Sampson
Mrs. William B. Stevenson
Mrs. Charles S. Truitt

Mrs. S. N. van Trump, Jr.
Mrs. James G. Waitneight
Mrs. J. Harold Watt
Mrs. C. Elmer Wright

Major Exhibitors

Bala-Cynwyd Garden Club
Garden Club of Bala-Cynwyd
Berwyn Garden Club
Countryside Gardeners
Drexelbrook Garden Club
The Gardeners
Loren Young Johnson Family
Martha Washington Garden Club
Media Welcome Wagon Garden Club
Penn Valley Garden Club
Rose Garden Club
Shipley School, Charlotte Ridpath
Garden Club of Springfield
Spruce Hill Garden Club
Suburban Garden Club
Tyler Arboretum, Gertrude Wister
Valley Forge Garden Club
Villanova Garden Club
West Chester Garden Club
West Chester Planters

PLANT SOCIETY SHOWS

The Society provided staff assistance and made its facilities available for these shows:

Pennsylvania Bonsai Society
September 15 to 21, 1973
American Rhododendron Society,
Philadelphia Chapter
Saturday and Sunday,
May 18 and 19, 1974
28th Annual Rose Show of the
Philadelphia Rose Society
Saturday and Sunday,
June 1 and 2, 1974
The Eleventh Annual Show of the
Middle Atlantic Regional Lily Group
Saturday and Sunday,
June 29 and 30, 1974

EXHIBITS IN THE HEADQUARTERS

The Society purchased new freestanding exhibit panels and new

tables to provide a more flexible staging for headquarters exhibits. The new materials, combined with an enthusiastic and committed exhibit committee, has provided outstanding exhibits throughout the year.

Exhibits

Committee

Mrs. S. N. van Trump, Jr.
Chairwoman
Mrs. Norman S. Bemis
Mrs. Preston D. Carter
Mrs. Elmer Hartwick
Mrs. Richard E. Heckert
Mrs. George A. Hewitt
Mrs. Adolph A. Hirstius
Mrs. H. Vernon Lapp
Mrs. William E. Lappin
Mrs. Edwin A. Peeples
Mrs. Victor J. Roberts
Mr. & Mrs. Frank E. Seymour

July - August

Colonial Gardening

September

Indoor Light Gardening

October

Highlights from 1973 Harvest Show
Learning about Leaves
Penn Valley Garden Club
A Tree for the Birds
Twin Valley Garden Club
Nature's Sculptures
Hill and Hollow Garden Club
Plant Containers. Classic Shapes and Contemporary Designs.
Charlotte Liebig Archer
Ann F. Hayes
Pumpkins and Squashes, etc.
W. Atlee Burpee and
Linvilla Orchards
Weathered Beauty (Arrangements)

November

Photographic Exhibit
"Traveling from Coast to Coast in Canada"
J. Anthony MacQuail, 3rd



Pennsylvania Bonsai Society exhibit at Society headquarters.

Hollies

June Vail

Dwarf Evergreens

Anita H. Kistler

Evergreens

Mrs. Niels H. Jensen

Evergreens

Mr. & Mrs. Charles Gruber

January

Treasures from the Sea

Herbarium Specimens of

Seaweeds

Howard H. Seymour

Seaweed Designs

Laura Tracy

Seascapes (Arrangements)

Water Grasses in Containers.

Creations from Natural Materials

Mrs. Raymond E. Knauff and

Mrs. F. M. Precopio

February - March

Wood in our Lives

Antique Woodworking Tools

H. Vernon Lapp

Growth Rate of Trees and

Enjoy your Fireplace

Clyde M. Hunt

U.S.D.A., Forest Service

Tree Sculptures

John J. Gerhart

Gypsy Moth

Ronald C. Langford

Penna. Dept. of Environmental

Resources, Bureau of Forestry

Woodworkers Art—Traditional and

Contemporary

Daniel Jackson

H. Vernon Lapp

Wynn Peeples

April

Plan your Summer

Mrs. Adolph A. Hirstius

City Balconies

Germantown Garden Club

Rose Tree Gardeners

Air Dried Plant Material

Frances T. Balaban

Vegetable Gardening

Charles A. Gruber

Pressed Plant Material

Mrs. Lyle R. Tanner

Techniques of Drying Plant Material

Mrs. Adolph A. Hirstius

Gardening Needs

Primex Garden Center

Dioramas of City Gardens

Designs of Pressed Plant Material

from 1974 Spring Show

May

Rhododendrons

Mr. & Mrs. Lyman Clark

June

Non-Flowering Plants

Mrs. George A. Hewitt

Photographs of Mushrooms

Donald W. Iffland

Display of Mosses

Display of Hardy Ferns

Fungi

Dr. Patricia Allison

Mr. & Mrs. Robert B. Taylor



That's not a piece of sculpture on the left, but a tree fungi. It's part of the mushroom exhibit at Society headquarters.



AWARDS

Committee

J. Liddon Pennock, Jr.

Chairman

John S. Kistler

Richard W. Lighty

J. Franklin Styer

Mrs. S. Newbold van Trump, Jr.

Distinguished Achievement Medal 1973

To Jacques L. Legendre

For his horticultural achievements during his 65 years in four great nurseries in the world, and his activities in the Pennsylvania, New York and Massachusetts Horticultural Societies.

PHS Gold Medal Certificate

To Mrs. John R. Clark

For her skill and perseverance in creating and growing a wide variety of beautiful container grown plants.

1973 PHS Plant Society Award

To Dorothy Ebel Hansell

For her record of service to horticultural societies and organizations.

The 1973 Landscape Horticulture Award of the Greater Philadelphia Chamber of Commerce and the Pennsylvania Horticultural Society

**To Beryl Price, architect,
The Fidelity Bank,
Yarway Corporation.**

For their well designed and well maintained landscapes around commercial concerns.

Distinguished Garden Awards

To Mr. & Mrs. Logan B. Gill

Mr. & Mrs. Robert H. Page

Mr. & Mrs. Orville H. Bullitt, Jr.

PHS Grand Horticultural Sweepstakes for 1973

To Mrs. J. Pancoast Reath.

For the highest number of Blue Ribbons in the 1973 Philadelphia Flower & Garden Show and the 1973 Harvest Show to:

Special Award

To Robert Day

Outstanding Junior Horticulturist
1973

MAJOR FLOWER SHOW AWARDS

1974 PHILADELPHIA FLOWER AND GARDEN SHOW

The Flower Show Award of the

Pennsylvania Horticultural Society for an exhibit of extraordinary merit, which stimulates an interest in horticulture to Indoor Light Gardening Society of America, Philadelphia Chapter.

The Pennsylvania Horticultural Society Awards of Merit to:

W. Atlee Burpee Company
Fairmount Park
Meadowbrook Farm
Morris Arboretum
Vick's Wildgardens, Inc.
Waldor Orchids

The Philadelphia Flower and Garden Show Trophy

for an exceptional exhibit in the 1974 show to:
DeWilde's Rhodo-Lake Nursery
Friends Hospital
Gale Nurseries
Muehlmann's Greenhouses
Pennsylvania Bonsai Society
Pennsylvania Christmas Tree Growers' Association
Pennsylvania Nurserymen's Association
Philadelphia Area Daffodil Society
Philadelphia Zoological Garden
William H. Starke and Son, Inc.
Rosade Bonsai Studio
Temple University

The Pennsylvania Horticultural Society Horticultural Sweepstakes Trophy

for the accumulation of the greatest number of points in the Horticultural Classes to:
Mrs. John G. Williams

**The Pennsylvania Horticultural Society
Room Award** for the outstanding
Blue Ribbon winner in the Room
Classes to:
Spade and Trowel Garden Club of
Kennett Square

**The Pennsylvania Horticultural Society
Table Award** for the outstanding
blue ribbon winner in the Table
Classes to:
Rose Tree Gardeners

**The Pennsylvania Horticultural Society
Flower Arranging Sweepstakes
Trophy** to the individual
accumulating the greatest number of
points in the Arrangement Classes
Section to:
Mrs. John W. Eiman

**The Pennsylvania Horticultural Society
Club Sweepstakes Award** for the
accumulation of the greatest
number of points in the
Arrangement Classes Section to:
Huntingdon Valley Garden Club

1973 HARVEST SHOW

**The Flower Show Award of the
Pennsylvania Horticultural Society**
for an exhibit of extraordinary merit
which stimulates an interest in
horticulture to:
Ely J. Johnson

Horticultural Sweepstakes Award
to the individual winning the greatest
number of Blue Ribbons in the
Horticultural Section to:
Frank C. Wuest

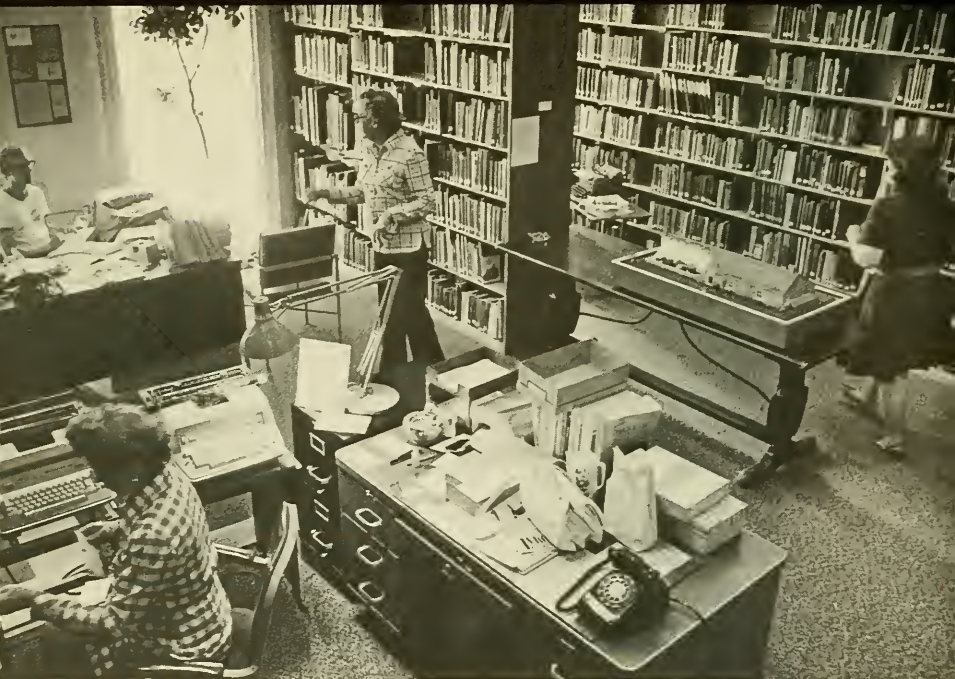
Arrangement Sweepstakes Award
to the individual winning the greatest
number of Blue Ribbons in the
Arrangement Section to:
Mrs. Huntingdon Jackson

Club Sweepstakes Trophy to the Club
winning the greatest number of Blue
Ribbons in the Show to:
The Philadelphia Rose Society

Award of Honor Ribbons for superior
exhibits to:
Arboretum of the Barnes Foundation
Fort Washington Garden Mart
Rick Fredette with Edward L.
Lindemann
Philadelphia Chapter, Indoor Light
Gardening Society
Mrs. Raymond E. Knauff with
Mrs. F. M. Precopio
Larry Mammino
Outdoor Gardeners
Pennsylvania Bonsai Society
Mrs. George W. Stott

PRESENTED AT OTHER FLOWER SHOWS

**The Pennsylvania Horticultural Society
Medal** to:
Kartuz Greenhouses, Wilmington,
Mass. at the New England Spring
Garden and Flower Show.
Austin High School at the Chicago
Flower and Garden Show.



New addition to the library.

SERVICES

LIBRARY

Committee

Barbara H. Emerson

Chairwoman

George R. Clark

Mrs. Edward J. Garra

Mrs. Armen Gevjan

Bessie Greenawalt

Mrs. James C. Hornor

Mrs. H. Vernon Lapp

Richard W. Lighty

Mary M. Martin

Lee M. Raden

Mrs. Keith Robertson

Adolph G. Rosengarten, Jr.

Circulation

More than 5,500 books, journals, and pamphlets circulated from the PHS Library this past year. The Library's collections of thirty slide sets and films were sent to more than 100 garden clubs and other groups for use in their programs.

Friends of the Library

Elizabeth D. A. Alexander

Mrs. Carl H. Anderson

Mrs. F. Morse Archer

Charlotte Liebig Archer

Ernesta D. Ballard

Frederic L. Ballard

Mary Barnes

Mrs. A. Barol

Rev. and Mrs. R. Beckett

Mrs. Paul Betancourt, Jr.

Mrs. George P. Bissell, Jr.

Breyer Foundation

Mrs. Henry W. Breyer

M.M. Brubaker

David Burpee

Mary Calwell

William S. Carden, Sr.

Mrs. John B. Carson

Mrs. S. L. Chambers

Mrs. Harry L. Christman

Mrs. Howard D. Cogan

Mrs. G. Dawson Coleman

Mrs. Alan Corson, Jr.

Mrs. Walter J. Cowan, Jr.

Alan Crawford

Mary Muller Cross
 Mrs. Stephen Cutler
 Mrs. Timothy R. Davis, Jr.
 Mrs. M. B. Debacker
 Mrs. Arthur Dewar
 Mrs. John Dilks
 E. A. Doelp
 Mrs. Franklin L. D'Olier, Jr.
 Mrs. G. M. Dorrance
 Mrs. Jerome J. Drucker
 David D. Dunn
 Eleuthere I. du Pont
 Bertha L. Eastwood
 William C. Ellis
 Barbara H. Emerson
 Caroline B. Ewing
 Mrs. George M. Ewing
 Lenore T. Ferry
 Joseph L. Finn
 Mrs. Thomas Fisher
 Kathryn S. Fithian
 Mrs. William M. Flook, Jr.
 Martin E. Fossler
 Ralph T. Fox, Jr.
 Garden Club of Springfield
 Mrs. E.J. Garra
 Nancy J. George
 Mr. & Mrs. Armen Gevjan
 Mrs. Harry Green
 Mr. & Mrs. Edgar R. Habbersett
 Mrs. John H. Halford
 Mrs. J. G. Richard Heckscher
 Mrs. Glen Sefton Hiers
 Hill Hardware Company
 Mrs. Julian W. Hill
 Mrs. Adolph A. Hirstius
 Mrs. James C. Hornor
 M. Martin Isaacs
 Horace C. Jones
 Mr. & Mrs. H. Joseph Kehl
 Ann Kelly
 Mrs. W. Stanton Kip
 John S. Kistler
 Doretta Klaber
 Mrs. George F. Kugler, Jr.
 Mrs. Frank W. Kussy
 Rosetta Kutcher
 Charles H. Landreth
 Mr. & Mrs. H. Vernon Lapp
 P. M. Lessig
 Mrs. David A. Linforth
 Mrs. John E. Lockwood
 A. Basil Lyons
 Joseph K. Mackay
 Mrs. Crawford C. Madeira
 Joseph G. Marano
 Mariner Foundation Trust
 Maria A. Marren
 Mrs. Thomas F. Marshall
 Mrs. John E. McCloskey
 Mrs. Robert C. McConnell
 Stephen C. McCormick
 Paul McFarland
 Erich F. Meitzner
 Dorothea B. Meltzer
 Mrs. Gilbert P. Monet
 Robert E. Montgomery
 Susan B. Montgomery
 Mrs. J. M. Morrison
 Mrs. Harold N. Nash
 Mrs. Thomas R. O'Malley
 Mrs. James B. Owens
 J. Liddon Pennock, Jr.
 Mrs. George T. Pew
 Lucile Porter
 Harold Beckler Pough
 Mrs. Frank M. Precopio
 Elizabeth Glenn Ravdin
 Mrs. J. Pancoast Reath
 G. Ruhland Rebmann, Jr.
 Margaret B. Rebmann
 Mrs. Bruce Riddle
 Joseph T. Riemer
 Mrs. E. F. Rivinus
 Mrs. George Robbins
 Mrs. A. Roberts
 Mrs. Conway Robertson
 George Robertson and Sons, Inc.
 Mrs. Charles S. Rockey
 Adolph G. Rosengarten, Jr.
 Ross G. Rusch
 Richard A. Sack
 Cecilia D. Saltonstall
 Mrs. Louis F. Schaeffer, Jr.
 Mrs. Lewis C. Scheffey
 Mrs. J. L. Serrill, Jr.
 Estelle Sharp
 Mrs. C. A. Sienkiewicz
 S. P. Silberstein
 Mrs. W. Graham Smith
 L. E. Snodgrass
 Mrs. Francis P. Steel
 Marilyn L. Steinbright
 J. A. P. Strassburger

Mrs. Wyllys Terry, Jr.
Mrs. Thomas D. Thacher
Mrs. John B. Thayer
Mrs. G. Eastburn Thompson
Mrs. Edward T. Twardowski
Twin Valleys Garden Club
Mrs. Charles W. Ufford, Jr.
Mrs. Frank R. Wallace
Mrs. William S. Wassell
Mrs. Henry M. Watts
Anita Edge Weisbrod
Mrs. Lloyd P. Wells
Mr. & Mrs. Joshua C. Whetzel, Jr.
Phyllis G. Williams
Mr. & Mrs. Curtin Winsor
Mrs. Caspar Wister
Mrs. John C. Wister
Howard Page Wood

Gifts to the Library

Ernesta D. Ballard
Nancy Berg
D. K. Blaine
Gladys Bulmer
George R. Clark
Henry Clifford
Mrs. Erastus Coming
Joseph Ewan
Mrs. Robert G. Harlow
Robert E. Montgomery
Theodore Newbold
Paul Palomino
Joanna Reed
Francie Robbins
Samuel L. Shober, Jr.
Mrs. Drayton M. Smith
Edwin J. Toth
Evelyn S. Walker
Mrs. W. Cooper Willits
Mrs. John C. Wister

Library Repair Program

In September 1971, the library staff planned a restoration and repair department, under the guidance of Carolyn Horton, noted book conservator. The PHS Library is one of the few libraries in the United States to have such a program and it is the first time it has been done at PHS. Since its inception the repair workshop has handled hundreds of books from the library's collection of more than 15,000 volumes.

Leather books are cleaned and oiled each year. Books damaged in circulation are repaired. Out-of-print books that are bought or given to the library are rebound or restored before being added to the general collection.

Often valuable horticultural books go out of print a few months after publication. The repair program is designed to conserve such books and to maintain the library's collection and ensure the preservation of an important part of our horticultural heritage.

Library Study Evenings

The Library staff planned two study evenings to introduce members to the many resources the library has to offer, in addition to its general collection of books. Nursery and seed catalogues, other plant material sources, reference material, current and bound periodicals were discussed by the staff and members attending.



GARDENS

Committee

Edward A. Doelp
Martha L. Garra (Designer)
Jane Inverarity
Helen Kaufman
Eloise Krewson
Miriam Kroungold
Mrs. H. Vernon Lapp
Ann McPhail
Virginia Parker
Mary A. Raffensperger
Frank Seymour
Mary Seymour
Benjamin Wilson

18th Century Garden

Committee members contributed approximately 625 hours maintaining the garden during the 1973 season. This committee also maintained the vegetable and cutting garden behind the PHS building. One committee member worked many hours during the winter months helping with the maintenance of the PHS greenhouse.

Bishop White Garden

The PHS staff continues to plan and maintain the Bishop White garden on a year-round basis. Part of the National Park System, the Bishop White garden is located at 3rd and Walnut Streets. Occasionally members of the 18th Century Garden Committee will lend a hand with the garden maintenance.

PUBLICATIONS

Committee

L. Wilbur Zimmerman,
Chairman
Charlotte L. Archer
M. M. Brubaker
George Harding
Mrs. Walter K. Howard
Craig S. Oliver
Ralph Sargent

During the year, the Society published: **THE GREEN SCENE:** Horticulture in the Delaware Valley.

In January, *The Green Scene*, a bimonthly publication, added four-color covers, front and back, and eight more pages to its usual 24. Permission from other magazines and newspapers to reprint articles appearing in *The Green Scene* was given. *The Green Scene* received considerable favorable publicity, and the editor was cited for outstanding work in the field of magazine editing by Women in Communications, Philadelphia Professional Chapter, Inc.

PHS NEWS: Beginning in September, the *News* was published 11 times a year, rather than six. Members and staff found there was simply too much news to continue on the bimonthly basis that PHS adopted when it began to publish *The Green Scene*.

THE 1974 PHILADELPHIA FLOWER & GARDEN SHOW PROGRAM.

Twenty-two thousand copies, a 7,000 increase over last year, were printed and sold in 1974. In addition to information about the Show exhibits, articles about horticulture were contributed by PHS members.

1973 YEARBOOK was sent to members and many horticultural groups.

Treasurer's Comments

Last year I drew attention to the healthy financial condition of the Society, and the several new projects with which we are involved thanks to our financial strength. The unprecedented success of the Philadelphia Flower and Garden Show and our annual fund-raising preview dinner has enhanced our finances as reflected in the accompanying statements. Our continuing progress enables the Society to remain in the forefront of the City's cultural and educational programs.

Respectfully,
 Alan Crawford, Jr.
Treasurer

THE PENNSYLVANIA HORTICULTURAL SOCIETY BALANCE SHEET (CASH BASIS) JUNE 30, 1974

ASSETS

	<i>Operating Fund</i>	<i>Endowment Funds</i>	
		<i>Unrestricted</i>	<i>Restricted</i>
Cash (savings accounts \$38,085)	\$ 62,667	\$ 644	\$5,354
Marketable securities (market value \$607,849)	174,850	516,648	
Furniture, equipment and improvements	99,568		
Accumulated depreciation and amortization	69,670		
	29,898		
Books and portraits	26,909		
	<u>\$294,324</u>	<u>\$517,292</u>	<u>\$5,354</u>

LIABILITIES

Payroll taxes withheld	\$ 283		
Special Fund - "10,000 Trees"	24,141		
Reserve for Flower Show losses and public service projects	170,000		
Pension Fund		\$ 23,200	
Principal			
Balance, June 30, 1973	98,311	503,268	\$5,354
Excess of income over expense	26,589		
Transfer to reserve for Flower Show losses and public service projects	(25,000)		
Unrestricted contributions		17,462	
Loss on sale of investments		(27,888)	
Life membership dues		1,250	
Balance, June 30, 1974	<u>99,900</u>	<u>494,092</u>	<u>5,354</u>
	<u>\$294,324</u>	<u>\$517,292</u>	<u>\$5,354</u>

The accompanying notes are an integral part of these financial statements.

THE PENNSYLVANIA HORTICULTURAL SOCIETY
STATEMENT OF OPERATING FUND INCOME (CASH BASIS)
FOR THE YEARS ENDED JUNE 30, 1974 AND 1973

	1974	1973*
Income		
Membership dues	\$ 67,676	\$ 63,570
Invested funds and savings accounts	35,213	25,897
Schaffer Trust	17,883	16,325
Designated contributions	4,885	2,038
Flower and Garden Show	458,249	364,463
Preview Dinner	88,343	74,892
Fees and sales	34,437	34,426
Other activities	14,556	10,434
Grant for film production	5,000	—
	<u>726,242</u>	<u>592,045</u>
Expense		
Salaries	176,916	150,476
Other employee expenses	30,640	22,813
Building maintenance and utilities	13,510	12,639
Depreciation and amortization	6,348	5,121
Administrative supplies and expenses	<u>28,822</u>	<u>24,490</u>
	256,236	215,539
Less allocation of overhead to		
Flower and Garden Show	<u>81,201</u>	<u>83,456</u>
	175,035	132,083
Horticulture magazine	—	8,747
Publications	30,001	24,775
Flower and Garden Show, including allocation of overhead	344,488	308,728
Preview Dinner	29,462	27,076
Library and Educational programs	16,397	15,599
Other activities	42,472	31,227
Bicentennial and public service projects	<u>61,798</u>	<u>7,478</u>
	<u>699,653</u>	<u>555,713</u>
Excess of income over expense	<u>\$ 26,589</u>	<u>\$ 36,332</u>

* Reclassified to conform to current presentation.

The accompanying notes are an integral part of these financial statements.

**THE PENNSYLVANIA HORTICULTURAL SOCIETY
NOTES TO FINANCIAL STATEMENTS**

SIGNIFICANT ACCOUNTING POLICIES

The financial statements are prepared on a modified cash basis. Marketable securities, furniture, equipment and improvements are carried at cost. Books and portraits are carried at 1971 ledger values, and subsequent additions have been charged to expense.

Life membership dues and unrestricted contributions are added to the Unrestricted Endowment Fund, which is a Board-designated fund without restriction on principal or income.

INVESTMENTS

	<i>Cost</i>	<i>Market value</i>
Operating Fund	\$174,850	\$171,930
Unrestricted Endowment Fund	516,648	435,919
	<u>\$691,498</u>	<u>\$607,849</u>

Operating Fund investments includes securities segregated to provide a funding of the reserve for Flower Show losses and public service projects.

In addition, the Society is the income beneficiary of a trust, under deed of Elizabeth Schaffer, comprised of securities with a market value of \$286,235 at June 30, 1974.

FURNITURE, EQUIPMENT AND RELATED DEPRECIATION

Depreciation of furniture and equipment is computed on the straight-line method over the estimated useful lives which range from five to ten years.

Improvements are amortized over the term of the building occupancy agreement.

Additions to furniture, equipment and improvements in the current year aggregated \$11,971.

SPECIAL FUND—"10,000 TREES"

Contributions to the Special Fund — "10,000 Trees", an ongoing campaign to raise funds for the planting of trees in Fairmount Park, administered by the Society, amounted to \$47,174 in the year ended June 30, 1974. The sum of \$24,206 was expended for tree planting. The balance of the Fund, \$24,141, at June 30, 1974, is deposited in a savings account.

PENSION FUND

The Society has established a pension plan for all full-time regular employees. The annual cost of the plan charged to Operating Fund expense, \$6,600, includes a provision for the amortization of past service liability of \$51,271 over a term of 40 years from 1970. Funds provided for the pension plan are invested by the Society in its Unrestricted Endowment Fund.

BUILDING AGREEMENT

The Society occupies facilities in Independence National Historical Park. The provisions of the agreement with the Department of Interior require that the Society assume responsibility for the routine operation, maintenance, and minor repairs to the interior of the building, the garden area and all related machinery and equipment. The Society is required to deposit \$100 per month in a fund for major repairs and replacements to buildings, equipment and grounds. The agreement terminates in 1983 and is renewable at the option of the Federal Government.

**THE PENNSYLVANIA HORTICULTURAL SOCIETY
REPORT ON EXAMINATION
YEAR ENDED JUNE 30, 1974**

The Council of The Pennsylvania Horticultural Society
Philadelphia, Pennsylvania

We have examined the balance sheet of The Pennsylvania Horticultural Society at June 30, 1974, and the related statement of Operating Fund income for the year then ended. Our examination was made in accordance with generally accepted auditing standards, and accordingly included such tests of the accounting records and such other auditing procedures as we considered necessary in the circumstances.

The financial statements are prepared on a modified cash basis, in that items of income and expense (except for depreciation) are recorded as received and paid. Preparation of the financial

statements on the accrual basis would require that a deferred credit of approximately \$33,000 for membership dues paid in advance be shown on the balance sheet. Because of inclusion of dues applicable to prior periods in the statement of Operating Fund income, there would be no material change in that statement.

In our opinion, such financial statements present fairly the financial position of The Pennsylvania Horticultural Society at June 30, 1974, on a modified cash basis, and the Operating Fund income (cash basis) for the year then ended, on a basis consistent with that of the preceding year.

Main LaFrentz & Co.
Certified Public Accountants
Philadelphia, Pennsylvania
August 9, 1974

CONTRIBUTIONS

CONTRIBUTIONS — 1974

Arcadia Foundation
Mrs. F. B. E. Arnold
Frederic L. Ballard
Pearl L. Barol
Mrs. Miller F. Barrick
Mr. and Mrs. John C. Bennett
Mrs. Victor R. Bieber
Mrs. Thomas Boyd
Mrs. Henry W. Breyer
Mrs. Charles S. Bromley, Jr.
Mr. and Mrs. Henry I. Brown, Jr.
Mrs. Elmer M. Buckey
Mr. and Mrs. Orville H. Bullitt
Gladys Bulmer
Laura Bulmer
Henry T. Bush, Jr.
Mary Calwell
Mr. and Mrs. H. Kurtz Canby
Ebba Carlson
Mrs. Stephen P. Caspar
Mr. and Mrs. Benjamin Coates
Mrs. Warren S. P. Combs
Mrs. Walter J. Cowan, Jr.
Emma A. Crowder
Mr. and Mrs. Harry Dannenbaum
Ellen Combs Davis
Mrs. Irving M. Day
Mrs. Howard R. Detweiler
Mr. and Mrs. Edward A. Doelp
Mr. and Mrs. H. K. Dugdale, Jr.
Mr. and Mrs. Irene du Pont, Jr.
Mrs. Irvin R. Edgcomb
Mrs. John H. Fassitt
Rachel Fittler
Frank Foster, Jr.
Mrs. Edward J. Garra
Mrs. A. O. Geertz
Mr. and Mrs. Courtland S. Gross
Mr. and Mrs. Robert M. Hewes, 3rd
Mrs. Harvey N. Houser
Mrs. Walter K. Howard
Anne C. Ingersoll
Mr. and Mrs. Orton P. Jackson
Nancy James
Horace F. Janney
Mrs. James Joseph
Henry B. Keep
Mrs. Sidney Keith
Mrs. Frank K. Kelemen
Mrs. Wilson Kip
Mrs. Philip W. Kniskern
Patricia Krygier
Mrs. S. James Krygier
Mrs. Leicester S. Lewis
Mr. and Mrs. Lindsley Loring, Jr.
Lovett Foundation, Inc.
Mr. and Mrs. Bayard M. Mallery
Mariner Foundation
Mrs. Briton Martin
Henry P. McIlhenny
Mrs. J. Gibson McIlvain, Jr.
Mrs. Robert McLean
Suzanne Merrick
Middle Atlantic Regional Lily Group
Mrs. H. Cameron Morris, Jr.
Doris Nichols
Mrs. Thomas R. O'Malley
Mr. and Mrs. George S. Opp
Mrs. Laird U. Park, Jr.
The Philadelphia Foundation
Mr. and Mrs. T. Morris Perot, 3rd
Mrs. Joseph N. Pew, Jr.
Mrs. Robert M. Price
Mr. and Mrs. Bernard Rafferty
Mrs. J. Pancoast Reath
Helen M. Riddle
Mrs. Walter S. Riley
Gainor Roberts
Adolph G. Rosengarten, Jr.
Mrs. Richard P. Rosenau
Robert Salgado
Joan M. Salzer
Mr. and Mrs. William C. Schultz, Jr.
Mr. and Mrs. Walter M. Schwartz, Jr.
Mrs. Robert Segrest
Mr. and Mrs. S. P. Silberstein
Mrs. Harry S. Sloat
Mr. and Mrs. John J. Somerville
Mrs. E. Spackman
Mr. and Mrs. M. A. Stailey
Mrs. H. Dixon Steinbright
Mr. and Mrs. David Stockwell
Mrs. F. J. Stokes, Jr.
Mr. and Mrs. C. Thompson Stott
Marian Stovicek
Mrs. George Strawbridge
Mrs. C. Newbold Taylor
Mrs. Tom Taylor
Mrs. John Lewis Thomas
Mrs. Wirt L. Thompson, Jr.
Mrs. Robert Toland

Anna G. Walker
Mrs. Paul McC. Warner
Warwick Foundation
Mr. and Mrs. Lloyd P. Wells
Eleanor M. Winter
Mr. and Mrs. John R. Woolford
Esther Wright
Dr. and Mrs. Heber E. Yeagley

**1974 FLOWER & GARDEN SHOW
PREVIEW DINNER,
Saturday, March 9**

1680 Society members and guests
enjoyed the dinner and preview.

Committee

Mrs. John A. Brown,
Chairwoman
Mrs. Elizabeth C. Bennett,
Co-chairwoman
Mrs. Malcolm B. Barlow
Mrs. Anne Chew Barringer
Mrs. James F. Bodine
Mrs. Edward P. Bromley, Jr.
Mrs. Morris R. Brownell, Jr.
Mrs. Anthony A. Buford, Jr.
Mrs. W. Blakeley Chandlee
Mrs. George R. Clark
Mrs. Tristram C. Colket
Mrs. Edward E. Cullen, 3rd
Mrs. William F. Delafield
Mrs. Franklin d'Olier, Jr.
Mrs. John T. Dorrance, Jr.
Mrs. George W. Edwards, Jr.
Mrs. Albert L. Fretz
Mrs. Thomas Ginley
Mrs. Thorp Van D. Goodfellow
Mrs. Eugene G. Grace, Jr.
Mrs. Bruce H. Greenfield
Mrs. David M. Gwinn
Mrs. Horace C. Jones
Mrs. Morris Lloyd, Jr.
Mrs. Frederick W. G. Peck
Mrs. Andrew W. Porter, Jr.
Mrs. Alfred W. Putnam
Mrs. Bayard H. Roberts
Mrs. Paul Rosenbaum
Mrs. Edward Starr, 3rd
Mrs. Robert E. L. Taylor
Mrs. W. Cooper Willits

Aides

Mr. and Mrs. W. Thaches Brown
Mr. and Mrs. Donald Carlson
Mr. and Mrs. John Chew
Mrs. Hope Fox Coates
Mr. and Mrs. William Delafield
Mrs. L. Roberts Detweiler
Mr. and Mrs. Morris Disston
Mr. and Mrs. William De Pee
Mr. and Mrs. A. S. Frazier
Mr. and Mrs. John Frazier
Mr. and Mrs. Clark Groome
Mr. and Mrs. Daniel Hutchinson
Mr. and Mrs. George F. Ingersoll
Mr. and Mrs. Robert Lansing
Mr. and Mrs. Tobin V. Levy
Mr. and Mrs. McKinley C. McAdoo
Mr. and Mrs. Michael Newbold
Mr. and Mrs. Steven Peake
Mr. and Mrs. James Riepe
Mrs. H. Martin Saunders
Mr. and Mrs. Peter G. Stanley
Mr. and Mrs. John H. Thacher, Jr.
Mr. and Mrs. Charles A. Tull
Mr. and Mrs. Christopher Willits

**1974 Philadelphia Flower
& Garden Show Preview
Dinner Patrons**

Ambassador and Mrs. Walter H.
Annenberg
Mr. and Mrs. John C. Atwood, Jr.
Rear Admiral and Mrs. Theodore C.
Aylward
Mr. and Mrs. George B. Barnard
Mrs. Thomas H. Bateman
Mr. and Mrs. Winthrop H. Battles
Mr. and Mrs. Edward F. Beatty
Mrs. Elizabeth Chew Bennett
Brigadier General and Mrs. Nicholas
Biddle
Mr. and Mrs. Frank G. Binswanger
Mr. and Mrs. Alfred E. Bissell
Mr. and Mrs. George P. Bissell, Jr.
Dr. and Mrs. Daniel Blain
Mr. and Mrs. J. Floyd Bloom
Mr. and Mrs. James F. Bodine
Mr. and Mrs. William Carson Bodine
Mr. and Mrs. Irwin P. Boeshore

Mrs. Curtis Bok
 Mr. and Mrs. Willard S. Boothby, Jr.
 Mr. and Mrs. Nathaniel R. Bowditch
 Mr. and Mrs. Gordon A. Brandes
 Dr. and Mrs. Angus L. Brenner
 Mrs. C. Barton Brewster
 Mrs. Henry W. Breyer
 Mr. and Mrs. Neilson C. Bridger
 Mrs. Clarence C. Brinton
 Mr. and Mrs. Clinton H. Brown
 Mr. and Mrs. C. Stuart Brown
 Mr. and Mrs. John A. Brown
 Mr. and Mrs. Reginald M. Budd
 Dr. and Mrs. Dean E. Burget, Jr.
 Mr. and Mrs. David Burpee
 Mr. and Mrs. Alfred M. Campbell, Jr.
 Mrs. Edward C. Cassard
 Mrs. George S. Cavendish
 Mr. and Mrs. Sidney L. Chambers
 Mr. and Mrs. W. Blakeley Chandlee
 Mr. and Mrs. John T. Chew
 Mr. and Mrs. George R. Clark
 Mr. and Mrs. John R. Clark
 Mr. and Mrs. Theodore Clattenburg
 Mr. and Mrs. Tristram C. Colket, Jr.
 Mr. and Mrs. Fred Tenney Conger
 Mr. and Mrs. Lammot duPont
 Copeland
 Mrs. John D. Corbit, Jr.
 Mr. and Mrs. Alan Corson, Jr.
 Dr. and Mrs. A. Reynolds Crane
 Mr. and Mrs. Alan Crawford, Jr.
 Albert J. Crawford, Jr., Esq.
 Dr. and Mrs. Samuel L. Cresson
 Mr. and Mrs. Gordon Crouter
 Mr. and Mrs. Edward E. Cullen, 3rd
 Mr. and Mrs. P. L. Davidson
 Mrs. William L. Day
 Miss Marie B. DeBacker
 Mr. and Mrs. Antelo Devereux
 Mr. Charles D. Dickey
 Mr. and Mrs. Santo R. DiCondina
 Mr. and Mrs. Walter M. Diener
 Mr. and Mrs. John Hyland Dilks
 Mr. and Mrs. Fitz Eugene Dixon
 Mr. and Mrs. Reginald J. Doherty
 Mr. and Mrs. Franklin d'Olier, Jr.
 Mr. and Mrs. John T. Dorrance, Jr.
 Mr. and Mrs. Craig M. Drake
 Mr. and Mrs. Lawrence Drake
 Mr. and Mrs. William P. Drake
 Mr. and Mrs. Morris Duane

Mr. and Mrs. H.K. Dugdale, Jr.
 Mrs. Deborah E. duPont
 Mrs. H. B. duPont
 Mr. and Mrs. Pierre S. duPont
 Mr. and Mrs. C. Benson Dushane, Jr.
 Mrs. Ralph Earle
 Mr. and Mrs. Theodore E. Eckfeldt
 Dr. and Mrs. John W. Eiman
 Mr. and Mrs. William S. Einwechter
 Mr. and Mrs. James Eiseman
 Mrs. Van Horn Ely
 Mrs. McFadden Ewing
 Mr. and Mrs. Harold H. Fehr
 Dr. and Mrs. James J. Ferguson, Jr.
 Mr. and Mrs. Thomas Fisher, Jr.
 Mr. and Mrs. Joseph P. Flanagan
 Mr. and Mrs. William Innes Forbes, Jr.
 Mr. and Mrs. Henry E. Ford
 Mr. and Mrs. Robert S. Freeman
 Mr. and Mrs. Jack M. Friedland
 Dr. and Mrs. Alfred S. Frobese
 Mr. and Mrs. A. Paul Funkhouser
 Mr. and Mrs. George Wood Furness
 Mr. and Mrs. Elbert F. Garrett
 Mr. and Mrs. Robert S. Gawthrop, Jr.
 Mr. and Mrs. Kenneth W. Gemmill
 Mr. and Mrs. H. Lewis Gentsch, Jr.
 Dr. and Mrs. Thomas H. Ginley
 Mr. and Mrs. Peter Godfrey
 Mr. and Mrs. Herbert W. Goodall, Jr.
 Mr. and Mrs. Thorp Van D. Goodfellow
 Mr. and Mrs. Matthew
 R. Gordon-Clark
 Mrs. James E. Gowen
 Mr. and Mrs. Eugene G. Grace, Jr.
 Mr. and Mrs. Bruce H. Greenfield
 Mr. and Mrs. John Gribbel, 2nd
 Mr. and Mrs. Harry C. Groome, Jr.
 Mr. and Mrs. John T. Gurash
 Mr. and Mrs. David Gwinn
 Dr. and Mrs. F. Otto Haas
 Mr. and Mrs. John C. Haas
 Mr. and Mrs. Edgar R. Habberset
 Mr. and Mrs. George R. Haines
 Mr. and Mrs. H. Thomas Hallowell, Jr.
 Mr. and Mrs. Robert J. Harbison, 3rd
 Mr. and Mrs. Robert A. Hauslohner
 Mr. and Mrs. Gustave A. Heckscher, 2nd
 Mr. and Mrs. Maurice Heckscher
 Dr. and Mrs. George C. Henry
 Mr. and Mrs. Philip R. Hepburn
 Mr. and Mrs. Francis L. Hine

Dr. and Mrs. Joseph M. Hoeffel, Jr.
 Mr. and Mrs. W. Charles Hogg, Jr.
 Mr. Clement R. Hoopes
 Mr. and Mrs. J. L. Humphrey
 Mr. and Mrs. Barton H. Hunter
 Mr. and Mrs. C. Jared Ingersoll
 Mr. and Mrs. Horace C. Jones
 Mr. and Mrs. Paul R. Kaiser
 Mr. and Mrs. Lawrence Katz
 Mr. and Mrs. Sidney Keith
 Mr. and Mrs. Frank K. Keleman
 Mr. and Mrs. Charles C. Kelsey
 Mr. and Mrs. Henry B. King
 Mr. and Mrs. John B. King
 Mr. and Mrs. Wilson Kipp
 Mr. and Mrs. John S. Kistler
 Mr. and Mrs. Louis Klein
 Mr. and Mrs. Philip Klein
 Dr. and Mrs. John K. Knorr, 3rd
 Dr. and Mrs. F. Peter Kohler
 Dr. and Mrs. Samuel W. Lambert, Jr.
 Dr. and Mrs. Edward L. Lame
 Mrs. N. S. Lamont
 Dr. and Mrs. H. Vernon Lapp
 Dr. and Mrs. David G. Leach
 Mr. and Mrs. Fairfax Leary, Jr.
 Dr. and Mrs. Henry F. Lee
 Mr. and Mrs. P. Blair Lee
 Mr. and Mrs. Al Paul Lefton, Jr.
 Mr. and Mrs. Clarence J. Lewis, Jr.
 Mr. and Mrs. William Draper Lewis
 Mr. and Mrs. W. Thacher Longstreth
 Mr. and Mrs. William C. Lowry, 3rd
 Mrs. A. Basil Lyons
 Mr. and Mrs. Norman M. McAvoy
 Mr. and Mrs. John R. McConnell
 Mr. and Mrs. Robert C. McConnell
 Judge and Mrs. John J. McDevitt, 3rd
 Mr. and Mrs. Paul P. McFarland
 Mr. and Mrs. Alan McIlvain
 Dr. and Mrs. Paul A. McKim
 Mr. and Mrs. Robert McLean, 3rd
 Mr. and Mrs. Henry S. McNeil
 Mr. and Mrs. John S. McQuade, Jr.
 Mr. and Mrs. James A. McQuail, Jr.
 Mr. and Mrs. John McShain
 Mr. and Mrs. William F. MacDonald
 Mr. and Mrs. William D. MacDowell
 Mr. and Mrs. B. H. Mackey
 Mr. and Mrs. Wistar H. MacLaren
 Mr. and Mrs. Edward S. Madara
 Mrs. Crawford C. Madeira
 Mr. and Mrs. Edward W. Madeira, Jr.
 Mr. and Mrs. John Markle, 2nd
 Mr. and Mrs. John P. Mason
 Mr. and Mrs. William H. Megary
 Mr. and Mrs. Edwin R. Metcalf
 Mr. and Mrs. William H. Meyle, Jr.
 Mr. and Mrs. John C. Miller
 Mr. and Mrs. Henry D. Mirick
 Mr. and Mrs. James F. Mitchell, Jr.
 Mr. and Mrs. Michael C. Mitchell
 Mrs. Randall Morgan
 Mr. and Mrs. Walter L. Morgan
 Dr. and Mrs. Stuart Mudd
 Mr. and Mrs. Louis Ely Mullin
 Mr. and Mrs. W. B. Murphy
 Dr. and Mrs. Hunter S. Neal
 Dr. and Mrs. Joseph T. L. Nicholson
 Mr. and Mrs. Bertram Lippincott
 O'Neill
 Mr. and Mrs. John R. Ott
 Mr. and Mrs. Frederick W. G. Peck
 Mr. and Mrs. J. Liddon Pennock, Jr.
 Mr. and Mrs. Henry F. Perot
 Mr. and Mrs. George T. Pew
 Mr. and Mrs. Walter M. Phillips
 Mr. and Mrs. Alfred W. Putnam
 Mr. and Mrs. John Rahenkamp
 Mr. and Mrs. Ernest L. Ransome, 3rd
 Dr. Elizabeth Glenn Ravdin
 Dr. and Mrs. J. Pancoast Reath
 Mr. and Mrs. G. Ruhlrad Rebmann, Jr.
 Mr. and Mrs. Paul C. Rebmann
 Mrs. E. W. Reed
 Mr. and Mrs. Eben Bent Reese
 Dr. and Mrs. Richard O. Rex
 Mr. and Mrs. Charles W. Riter
 Mr. and Mrs. F. Markoe Rivinus
 Mr. and Mrs. Edward C. Robbins
 Mr. and Mrs. A. Addison Roberts
 Mr. and Mrs. Algernon Roberts
 Mr. and Mrs. Bayard H. Roberts
 Mr. and Mrs. Wolcott W. Robinson
 Mr. and Mrs. G. Frederick Roll
 Mr. and Mrs. Paul Rosenbaum
 Mr. and Mrs. Adolph G. Rosengarten,
 Mr. and Mrs. Lessing J. Rosenwald
 Mrs. Donald P. Ross
 Mr. and Mrs. John Ross
 Mr. and Mrs. Robert S. Ross
 Mr. and Mrs. Karl F. Rugart, Sr.
 Mr. and Mrs. Robert S. Ryan
 Mr. and Mrs. Ernest C. Savage

Dr. and Mrs. Henry L. Savage
 Judge and Mrs. Harold D. Saylor
 Mr. and Mrs. Henry W. Scarborough
 Mrs. Lewis C. Scheffey
 Mr. and Mrs. Herbert F. Schiffer
 Mr. and Mrs. Karl R. Schoettle
 Mr. and Mrs. Donald A. Scott
 Mr. and Mrs. Isadore M. Scott
 Mr. and Mrs. Joseph C. Scott
 Mr. and Mrs. Robert D. Scott
 Mr. and Mrs. Frank E. Seymour
 Mr. and Mrs. Philip P. Sharples
 Virginia F. Shryock
 Mr. and Mrs. Robert J. Siebert
 Mr. and Mrs. James M. R. Sinkler
 Mr. and Mrs. David B. Smith
 Mrs. Edward B. Smith
 Mrs. G. Giesau Smith
 Mr. and Mrs. Lawrence M. C. Smith
 Mr. and Mrs. Rayburn C. Smith, Jr.
 Mr. and Mrs. C. Sodano
 Mr. Boyd L. Spahr, Jr.
 Dr. and Mrs. George E. Staehle
 Mr. and Mrs. Edward Starr, 3rd
 Mr. and Mrs. Alfred Steel
 Mr. and Mrs. Geoffrey Stengel
 Mr. and Mrs. Henry B. Stewart
 Mrs. S. Emlen Stokes
 Mr. and Mrs. Charles S. Strickler
 Dr. and Mrs. Morris W. Stroud
 Mr. and Mrs. Leon C. Sunstein, Jr.
 Mr. and Mrs. Robert E. L. Taylor
 Mr. and Mrs. Wyllys Terry
 Mr. and Mrs. F. William Thacher, Jr.
 Mr. and Mrs. John Hoover Thacher
 Mrs. Thomas D. Thacher
 Mrs. John B. Thayer
 Mr. and Mrs. John B. Thayer
 Mrs. R. Ellison Thompson
 Mr. and Mrs. Robert P. Thompson
 Henry A. Thouron
 Mrs. E. Rommel Thudium
 Mr. and Mrs. Louis R. Thun
 Mr. and Mrs. Charles R. Tyson
 Dr. and Mrs. Charles A. W. Uhle
 Dr. and Mrs. Joseph B. VanderVeer
 Mr. and Mrs. James H. Walker, Jr.
 Mr. and Mrs. Clarence A. Warden, Jr.
 Mr. and Mrs. Randolph H. Waterfield, Jr.
 Mr. and Mrs. Henry Miller Watts
 Mr. and Mrs. Channing Way, Jr.
 Mr. and Mrs. Andrew S. Webb, Jr.
 Dr. and Mrs. John C. Weber
 Mrs. William G. Weisbrod
 Harold C. Wessel
 Dr. and Mrs. Franklin H. West
 Mr. and Mrs. William White
 Mrs. Daniel S. Whiteman
 Mr. and Mrs. Ezra B. Whitman, Jr.
 Mr. and Mr. John G. Williams
 Mr. and Mrs. W. Cooper Willits
 Mrs. George Searing Wilson
 Mr. and Mrs. John F. Wilson
 Dr. and Mrs. Robert N. Wilson
 Mr. and Mrs. Curtin Winsor
 Mrs. John Wintersteen
 Mrs. L. Caspar Wister
 Mrs. Huston Wolcott
 Mr. and Mrs. Elias Wolf
 Mr. and Mrs. Edward F. R. Wood, Jr.
 Mr. and Mrs. Grahame Wood
 Mr. and Mrs. Richard D. Wood
 Mrs. George Woodward, Jr.
 Mr. and Mrs. Granville Worrell, 2nd
 Mrs. William Coxe Wright
 Mrs. Wilson S. Yerger
 Mr. and Mrs. Leonard A. Yerkes, Jr.
 Dr. and Mrs. L. Wilbur Zimmerman

MEMBERSHIP

June, 1973 5204 members

June, 1974 5388 members

The names and addresses of all current members are on file at the Society headquarters.

NEW LIFE MEMBERS—1974

Maryrita Ambacher
Santo R. DiCondina
Mrs. Ernest C. Drew (Honorary)
Lisa H. Freeman
Richard A. Hauslohner
Mrs. Lynwood R. Holmes
(Honorary)
Mrs. John H. Thacher
Mrs. J. J. Willaman (Honorary)

SUSTAINING MEMBERS— JUNE 1974

Francis Heed Adler
Elizabeth Chew Bennett
Mrs. Francis Boyer
Mrs. Richard S. Cowan
Mrs. Walter J. Cowan, Jr.
Mr. and Mrs. Alan Crawford, Jr.
Albert J. Crawford, Jr.
Mrs. William L. Day
Mrs. Franklin d'Olier, Jr.
Mrs. H. B. duPont
Mr. and Mrs. Edward J. Dwyer
Charles H. Evoy, Jr.
Herbert W. Goodall, Jr.
Mrs. Eugene G. Grace
Dr. and Mrs. F. Otto Haas
Mrs. John C. Haas
Mr. and Mrs. Richard E. Heckert
Mrs. Eileen Hart Hinkson
Mrs. Edward Hopkinson
Mr. and Mrs. Walter K. Howard
Mr. and Mrs. Horace C. Jones, II
Mr. and Mrs. Paul E. Kelly
Mrs. Louis Klein
Mrs. George F. Kugler, Jr.
Mr. and Mrs. Cuthbert H. Latta
Mrs. Rodney M. Layton
Mrs. A. Basil Lyons
Mr. and Mrs. Alfred S. Martin
Stephen McCormick
Mrs. William H. Meyle, Jr.
Mr. and Mrs. Lamont Moore

Mrs. Howard Petersen
Mrs. Edward Piszek
Mrs. Charles F. Powell
Mrs. Alfred W. Putnam
Mr. and Mrs. G. R. Rebmann, Jr.
Mr. and Mrs. Paul Rosenbaum
Mr. and Mrs. Adolph Rosengarten
Robert S. Ryan
Richard A. Sack
Mrs. Henry Saltonstall
Mrs. Lawrence Saunders
Mrs. G. Giesau Smith
Mrs. R. Ellison Thompson
Mrs. Rush D. Touton
Mr. and Mrs. Channing Way, Jr.
Mrs. George Winchester
Mrs. Elias Wolf
Mrs. George Woodward, Jr.

CONTRIBUTING MEMBERS— JUNE 1974

John F. Abel
Mr. and Mrs. Herman A. Affel, Jr.
Mrs. Earle M. Anderson
Mrs. Howard F. Anderson
Mrs. Stockton Andrews
Mrs. F. M. Archer, Jr.
Mrs. John C. Atwood, Jr.
Henrietta E. Bachman
Mrs. C. W. Balis, Jr.
Mrs. J. Sellers Bancroft
Mrs. Donald Byers Barrows
Paul A. Bein
Mrs. Ingersoll Benson
Mrs. H. Lloyd Beyer, Jr.
Mrs. Edward Bickford
Eleanor A. Bliss
Mr. and Mrs. James F. Bodine
Mr. and Mrs. Irwin Boeshore
Catherine M. Bohlen
Mrs. Curtis Bok
Gordon A. Brandes
Mrs. George H. Brown, Jr.
Mrs. Edward Browning, Jr.
Orville H. Bullitt
William C. Burleigh
Mrs. McBee Butcher
Mrs. J. Alfred Calhoun
Mrs. Hans L. Carstensen, Jr.
Mrs. Gordon H. Chambers

Mrs. Philip J. Chapman
 James Cheston
 Mrs. John R. Clark
 Theodore Clattenburg
 Mrs. Joseph R. Comly
 Mrs. Richard F. Corroon
 Mrs. Warren E. Crane
 Mr. and Mrs. Lynn L. Detweiler
 Mrs. Howard R. Detweiller
 Mrs. Antelo Devereux
 Mrs. Arthur Dewar
 Mrs. Lawrence Drake
 Mrs. H. K. Dugdale
 Mrs. Ervin R. Edgcomb
 Mrs. William S. Einwechter
 Mrs. William C. Elliott
 William C. Ellis
 Barbara Emerson
 Mrs. F. A. Evans
 Mr. and Mrs. Harold H. Fehr
 Mr. and Mrs. Morton H. Fetterolf, Jr.
 Mrs. R. S. Firestone
 Mrs. Herman Fischer
 Mr. and Mrs. William F. Fischer, Jr.
 Mrs. William M. Flook, Jr.
 Mr. and Mrs. Frederick L. Fuges
 Mrs. Stephen S. Gardner
 Mr. and Mrs. E. F. Garrett
 Arthur A. Gelston, Jr.
 Bruce H. Greenfield
 Mrs. John Gribbel, 2nd
 Miriam Groner
 Mr. and Mrs. Charles A. Gruber
 R. W. Haag
 Mr. and Mrs. William P. Haase
 Marguerite Hallowell
 Mrs. Thomas P. Harney
 R. L. Harper
 Mrs. Roberts Harrison
 Mrs. P. E. Hartenstein
 Mrs. W. Hendrickson, Jr.
 Mrs. Henry Lee Hudson
 Mrs. William M. Huggins
 Mrs. Walter Hughson
 N. Paul Introcaso
 Mrs. Charles S. Jacobs
 Mrs. Spencer L. Jones
 Mr. and Mrs. Frank K. Kelemen
 S. W. Lambert, Jr.
 N. S. Lamont
 Robert Langsfeld
 Mr. and Mrs. Daniel M. Layman
 Mr. and Mrs. John Leake
 Dr. and Mrs. William M. Lemmon
 Mrs. Howard C. Leopold
 Alice A. Lineman
 Mrs. William F. Lotz, Jr.
 Mrs. Ford R. Lowdermilk
 Mrs. Robert W. Lowry
 Mrs. W. C. Lowry, 3rd
 Mrs. B. H. Mackey
 Mr. and Mrs. Joseph Marano
 Mr. and Mrs. John Markle, 2nd
 Maria A. Marren
 Mrs. Henry N. Marsh
 Ruth C. Marshall
 W. H. Martin
 John P. Mason
 Mrs. John R. McConnell
 Mrs. Edward McLean
 Mrs. James L. McVey
 Mrs. William Megary
 Merry Gardens
 Mr. and Mrs. John A. Meyer
 Henry D. Mirick
 Mrs. Theodore H. Morris, 3rd
 Jason R. Nathan
 William P. Norris, Jr.
 Mr. and Mrs. Thomas R. O'Malley
 Mrs. Laird U. Park, Jr.
 Pauline T. Pease
 Alice M. Pennock
 Mr. and Mrs. G. Holmes Perkins
 Mrs. Ovid Petrescu
 Mrs. James E. Pew
 Mrs. Robert M. Price
 Mrs. B. Brown Pursell
 Lee M. Raden
 Mrs. Conyers Read
 Mr. and Mrs. Eben B. Reese
 Eleanor M. Reeves
 Monica Reynolds
 Mrs. Edward C. Robbins
 Charles Robertson
 Mrs. Conway Robertson
 George Robertson & Sons, Inc.
 Mrs. B. F. Roland
 Mrs. G. Frederick Roll
 Mr. and Mrs. Henry F. Rollman
 Eudora Roseman
 Mrs. Lessing J. Rosenwald
 Anne Rowland
 Eleanore M. Rumsey
 Mrs. Charles Rupp

Mr. and Mrs. Donald R. Saxton
Mr. and Mrs. I. M. Scott
Mrs. Robert D. Scott
Mrs. Irving R. Segal
Mr. and Mrs. Richard L. Seifert
Mr. and Mrs. Frank E. Seymour
Virginia F. Shryock
Mrs. Walter W. Slocum
Mr. and Mrs. William H. Smith
Mrs. C. Randolph Snowden
Boyd L. Spahr, Jr.
Mrs. Fenn Stafford
Mrs. Geoffrey Stengel
Mrs. William B. Stephenson
Mr. and Mrs. David A. Stevens
Mrs. J. Stodgell Stokes
Gustav H. Tafel, Jr.
Mrs. Timothy R. Talbot
Mrs. C. Newbold Taylor
Mrs. Robert E. L. Taylor
Mr. and Mrs. Albert W. Terry, 3rd
Mrs. Sydney Thayer
Mrs. Edmund Thelen
Mrs. Clarence Tolan, Jr.
Mary L. Tower
Mrs. F. Ross Valentine
Mrs. S. N. Van Trump, Jr.
Vosters Nurseries & Greenhouses
Mrs. E. Perot Walker
Mrs. Philip Wallis
Mrs. H. L. Walters
Mr. Stanley F. Ward
Mrs. Clarence A. Warden, Jr.
Mrs. Charles J. Webb, 2nd
Mrs. Maurice A. Webster
Colonel & Mrs. Walter D. Weikel
Mrs. Daniel S. Whiteman
Mr. George W. Wilkins
Mrs. Jonathan W. Williams
Mrs. George Searing Wilson
Eleanor M. Winter
Mrs. Francis C. Wood
Mrs. George S. Worth
Mrs. Richard Worth
Mrs. Clarence Z. Wurts
Dr. & Mrs. H. E. Yeagley
Mrs. Richard N. Young



Custodian Benjamin Johnson mows the grass in the Society's apple and pear orchard.

OTHER ACTIVITIES

In addition to routine duties

Staff members served as judges at four flower shows and city block competitions.

Four staff members staged their own exhibits in the Philadelphia Flower & Garden Show and the Harvest Show.

The Society participated in Super Sunday, the Wissahickon Watershed Conservation Fair, the Rittenhouse Square Flower Market and Festival '74.

STAFF MEMBERS ATTENDED OR PARTICIPATED IN MEETINGS OF THE FOLLOWING ORGANIZATIONS:

American Association of Botanical Gardens & Arboreta*
American Bonsai Society*
American Horticultural Congress
American Horticultural Society*
John Bartram Association*

Council on Botanical & Horticultural Libraries*
Craft Advisory Committee, Walter Biddle Saul High School of Agricultural Sciences*
Delaware Valley Chapter, American Rock Garden Society*
Earth Congress, Executive Council*
Garden Writers Association of America
Grantsmanship Center
Greater Philadelphia Cultural Alliance*
Gypsy Moth Task Force, Fairmount Park Commission*
Lincoln High School Horticulture Curriculum, Advisory Committee*
Mayor's Gateway Committee*
Middle Atlantic Regional Lily Group
National Council for Therapy and Rehabilitation through Horticulture
Neighborhood Gardens Association*
New York University Medical Center, Department of Rehabilitation Medicine—Horticultural Workshop
Pen-Del Chapter, International Shade Tree Conference
Pennsylvania Bonsai Society
Pennsylvania Conference on Aging
Pennsylvania Environmental Conference
Pennsylvania Environmental Council*
Pennsylvania Nurserymen's Association
Pennsylvania Parks and Recreation Conference
Pennsylvania Roadside Council*
Philadelphia Chapter,
American Rhododendron Society
Philadelphia Chapter, Indoor Light Gardening Society
Philadelphia Public Relations Association
Philadelphia '76, Environmental Advisory Council*
Philadelphia '76, Women's Advisory Commission
Society of Professional Journalists
Women for the Bicentennial
Women in Communications

*Served on governing body

ORGANIZATIONS WHICH MET AT PHS HEADQUARTERS ONCE OR MORE DURING 1974

City Department of Recreation,
Neighborhood Park Program
Earth Congress
Four Counties Garden Club
Herb Society of America
Philadelphia Unit
Horticultural Curriculum Committee,
Philadelphia Schools
John Bartram Association
Junior League Garden Club
Middle Atlantic Regional Lily Group
Neighborhood Garden Association
Northeast Region, American Orchid
Society
Older Adult Center, Einstein Hospital
Southern Division
Pennsylvania Bonsai Society
Philadelphia Chapter, American
Rhododendron Society
Philadelphia Chapter, Garden Club of
America
Philadelphia Rose Society
Philadelphia Society for Promoting
Agriculture
Philadelphia Tourist Bureau
(Guides Orientation)

MISCELLANY

14,649 people came to the Society's
headquarters
29,004 people telephoned the Society
27,086 pieces of mail were received by
the Society
3,367 meals were served at the Society
More than 5,000 horticultural inquiries
were answered.



PHS STAFF

Ernesta D. Ballard
President

James P. McCarvill
Flower & Garden Show Manager

George C. Sinkler
Assistant to the President

Jean Byrne
Editor

Julie Morris
Horticultural Librarian

F. Evelyn Hett
Flower Show Secretary

Edward L. Lindemann
Horticulturist

Noreen McCoy
Members Activities Coordinator

Patricia M. Cain
Administrative Assistant

Rick Fredette
Educational Coordinator

Theodora Welgoss
Bicentennial Projects Director

Honora Wesley-Burke
Book Restorer

Charlotte L. Archer
Library Assistant

Dianna Bonham
Library Assistant

Frances Sinclair
Cataloger

Grace M. Cole
Membership Secretary

Kathleen M. Upham
Secretary

Marie Rodia
Secretary

Carol Lindemann
Secretary

Winnie Ford
Receptionist-Typist

Benjamin Johnson
Custodian

Mary Williams
Housekeeper

THE PENNSYLVANIA HORTICULTURAL SOCIETY

YEARBOOK 1975





YEARBOOK

July 1, 1974 — June 30, 1975



The Pennsylvania Horticultural Society
Independence National Historical Park
325 Walnut Street
Philadelphia, Pennsylvania 19106
(215) WA 2-4801

Contents

Chairperson's Letter	3
President's Letter	4
Administration	6
Members Activities	8
Community Activities	10
10,000 Trees	15
Flower Shows	15
Headquarters Exhibits and Shows	18
Awards	19
Services	22
Contributions	24
Preview Dinner	24
Financial Report	25
Membership	29
Other Activities	29



From the Chairperson

Anyway you look at it, the Pennsylvania Horticultural Society's 148th year was a fruitful one.

Membership continued to grow. Activities increased markedly at our headquarters where we received an unprecedented number of visitors. The scope of our community activities program, a most important public service, was expanded.

And, in its 10th year of sponsorship by PHS, the Philadelphia Flower & Garden Show once again drew record-breaking crowds as well as the acclaim of knowledgeable horticulturists from many parts of the country.

Furthermore, our financial position at year's end was very strong indeed. This healthy condition was the result, in large part, of the success of the Flower & Garden Show and of our annual preview dinner.

These two events are outstanding examples of the effective teamwork between the PHS staff and member volunteers.

The teamwork, I believe, is our greatest single strength. Backed by our sound resources, it makes it possible for the Society to plan and implement its wide variety of soundly based programs designed to meet the increasing horticultural interests of the Delaware Valley.

On behalf of the Executive Council, I offer a truly sincere "thank you" to the staff and volunteers for their fruitful work in support of PHS.

In closing, I urge you to read with care the pages that follow. There you will find in brief detail reports on all of the Society's diverse activities. They make worthwhile reading.

Herbert W. Goodall, Jr.
Chairperson

From the President

At PHS, we march to the rhythms of several different years. The program year, beginning in September; the calendar year, on which our memberships are based; the Flower Show year, which begins as each show ends; the gardening year, which arrives with the vernal equinox, and finally, the fiscal year — July 1 through June 30. This Yearbook records the things that happened in fiscal 1975.

It has been a good year. We have been caught up in the mounting excitement of the bicentennial and are proud of the contributions our Society is making:

Our bicentennial film, "How Long Is Always — A Story of Trees," was completed on schedule at the end of June and will be shown without charge throughout the Philadelphia area during 1976. The producer, Brian Kellman, deserves great credit, and we are confident the film will be recognized nationally as well as locally.

10,000 Trees for Philadelphia's parks has reached the halfway mark, and we have every reason to expect that it will meet its goal. Details appear on page 15.

To help other groups and individuals work toward the bicentennial goal of greening Philadelphia, we published *The Philadelphia Area Green Pages*, a 77-page handbook of information for gardeners in and near the City. PHS members and staff were responsible for the writing; Anthony Hillman drew the hilarious illustrations, and the editing and production was done by George Borowsky. I hope every member has a copy.

During its first year on the road, the PHS Gardenmobile played an important role in our community activities. First suggested by the late R. Gwynne Stout during his presidency in the early 1960s, the Gardenmobile has become the personification of the Society for gardeners all over the city.

In the fall and winter, the brightly painted step-van carried the PHS training course for teachers to five different schools. In the spring, equipped with peat moss, fertilizer, tools, seeds and plants, the Gardenmobile brought assistance and encouragement to 33 community vegetable gardens in the inner city, delivering everything from informational bulletins to stakes, markers, fencing, and insecticides as needed. In addition, the Gardenmobile, with its own library, appeared at Super Sunday, the Philadelphia Festival, the Philadelphia Flower & Garden Show, and the Annual Clean-Up Day Parade — carrying free plant clinics to the public.

The horticultural curriculum guide *Indoor Gardening in the Classroom*, developed by the PHS staff, was published in October, and served as the basis of our service training program in the Philadelphia public school system. Designed for upper elementary and middle school classes, the 150-page guide has been praised by educators and horticulturists throughout the country.



When I am asked what the Pennsylvania Horticultural Society does, I usually control the urge to give a two hour answer and say, simply, "We collect and disseminate horticultural information." The range of our information service is broad. We provide the best horticultural library in this region. We publish the *Green Scene*, which continues to build an impressive file of fan mail. We run the spring Philadelphia Flower & Garden Show — the finest in the country — and the Harvest Show — of equal excellence. We make our resources available to other horticultural and gardening groups. Perhaps most important, we have assembled a staff of knowledgeable and helpful horti-

culturists to answer the questions that pour into our mailbox and our telephone — more than 6000 of them in fiscal 1975.

There is a tremendous interest in horticulture and gardening today, and a tremendous need for the programs we provide. The people whose names appear in this yearbook, in our Flower Show programs, on our Preview Dinner invitation and in the *Green Scene* and the PHS News, by their unstinting collaboration and generous financial support have made our programs possible.

Ernesta D. Ballard
President

ADMINISTRATION

Executive Council

Herbert W. Goodall, Jr.,
Chairperson
L. Wilbur Zimmerman,
Vice-Chairperson
Robert S. Ryan,
Vice-Chairperson
Ernesta D. Ballard,
President
Alan Crawford, Jr.,
Treasurer
James P. McCarvill,
Secretary
William C. Burleigh
Frederic W. Clark
George R. Clark
Mrs. John R. Clark
Barbara H. Emerson
Mrs. Eugene G. Grace
Mrs. Walter K. Putnam
Mrs. Paul E. Kelly
John S. Kistler
Mrs. Adolphus Lewis, Sr.
Richard W. Lighty
Mrs. John D. Lohmeyer
William D. MacDowell
Henry D. Mirick
Robert E. Montgomery
Craig S. Oliver
J. Liddon Pennock, Jr.
Mrs. Alfred W. Putnam
Henry H. Reichner, Jr.
Adolph G. Rosengarten, Jr.
Bradshaw Snipes
John E. Strong
Mrs. Morris W. Stroud, 3rd
J. Franklin Styer
Mrs. S. Newbold van Trump, Jr.
Mrs. E. Perot Walker
Mrs. John G. Williams
Esther J. Winters
Minturn T. Wright, 3rd

The Chairperson and President are
ex officio members of all committees.

Executive Committee

Herbert W. Goodall, Jr.,
Chairperson
Alan Crawford, Jr.
Mrs. Paul E. Kelly
Lee M. Raden
Robert S. Ryan
Mrs. John G. Williams
L. Wilbur Zimmerman

Nominating Committee

Mrs. Eugene G. Grace,
Chairperson
William C. Burleigh
Alan Crawford, Jr.
Mrs. John D. Lohmeyer
Henry H. Reichner, Jr.
L. Wilbur Zimmerman

Investment Committee

Alan Crawford, Jr.,
Chairperson
William C. Burleigh
George R. Clark
Minturn T. Wright, 3rd

Personnel Committee

Alan Crawford, Jr.
Mrs. Paul E. Kelly
Robert S. Ryan



PHS members working together.

MEMBERS ACTIVITIES

Committee

George R. Clark,
Chairperson
Mrs. Walter K. Howard
John S. Kistler
Mrs. John D. Lohmeyer
Robert E. Montgomery
Mrs. Morris W. Stroud, 3rd

The Society offered members 14 lectures and symposia from September through April, eight courses & workshops in the fall and winter, two field trips in summer, fall, and spring, and garden visits in July 1974, April and June of 1975. Three of the lectures were co-sponsored with the Morris Arboretum and two PHS workshops were held at the Schuylkill Valley Nature Center; all other lectures and courses were at PHS. Six special meetings to introduce PHS members to plant specialties were conducted by plant societies; many other plant society meetings were open to interested members. A three-day trip for garden visiting on Long Island was set up; a two day trip went to Long Beach Island and the Pine Barrens. The garden visits were exceedingly popular, all field trips and workshops were fully subscribed, and the lectures were well attended.

Special events for members were the plant distribution and Harvest Show preview following the annual meeting in September, the Christmas Show Open House following the Candlelight Stroll in December, the spring Flower & Garden Show members preview, the Society Hill Tour Open House, and the third annual members evening at the Philadelphia Zoo.

Garden Visits

1974 July Long Island

Mr. & Mrs. Robert S. Benepe
Mr. & Mrs. Franklin d'Olier, Jr.
Mr. & Mrs. Harold F. Johnson
Mr. & Mrs. William K. Laughlin
Mr. & Mrs. James N. Wallace
Mr. & Mrs. Charles D. Webster
Mr. & Mrs. Elwood Whitney

April 1975 Main Line

Dr. & Mrs. Theodore Cohen

June 1975 Society Hill

Mr. & Mrs. Kenneth Cundy
Dr. & Mrs. Palmer H. Fitcher
Dr. & Mrs. Robert Gill
Mr. & Mrs. Alan Halpern
Mr. & Mrs. Howard Kellogg
Adolph de Roy Mark
Mr. & Mrs. Theodore T. Newbold
Powel House
Mr. & Mrs. G. Frederick Roll
Mr. & Mrs. Alfred Zernik

June 1975 Chestnut Hill

Ernesta & Frederic Ballard
Mr. & Mrs. Elias Wolf



COMMUNITY ACTIVITIES

School Program

Based on last year's successful efforts, the Society expanded its staff development training program to accommodate 300 Philadelphia School District teachers, thus reaching almost 10,000 area children. Eight two-hour monthly classes were conducted at five regional locations in the city. Using the newly developed horticultural curriculum guide, *Indoor Gardening in the Classroom*, as the basis for the course, the PHS staff presented an intensive program on house plant culture and care, trees, bulbs, flowers, and vegetables. Teachers tested classroom experiments and performed horticultural projects at each session before returning with their materials to the more than 125 schools that were represented. In addition, over 70 schools conducted successful campaigns for the "10,000 Trees" program, which concluded the school year with four planting ceremonies in Children's Groves in the park system.

The program was again conducted with the cooperation of the Office of Science Education. Throughout the year, it was repeatedly endorsed by officials, and in May the School District accredited the course, making it part of the in-service program for the coming year.



Gardenmobile at Community site. Young gardeners receive vegetable seedlings in containers for early start on spring planting.

Staff members unload materials from PHS Gardenmobile.



Ask us about
House plants
Vegetables
Fruit
Window boxes
Shrubs
Trees

Community Vegetable Gardens Program

1974 Program

Cooperating with the City Department of Recreation's Neighborhood Parks Program and the Bell Telephone Company, PHS assisted ten community groups throughout the city to "farm" vacant lots and to produce a bountiful fall harvest. The value of the program can be measured both economically and socially. The strengthening of community ties and an increased awareness of the neighborhood environment were as evident as the baskets of tomatoes, peppers and corn grown on these city plots.

1975 Program

Encouraged by these results and to further the "greening" of the city, the Society quadrupled its program coverage for 1975. Twenty-seven new groups met with the staff early in the year to plan their respective gardens and to receive instruction. With the help of a rototiller purchased for the program by the Philadelphia Committee of the Garden Club of America, all the sites were prepared and almost 1000 residents had planted by mid-June.

Parkway Program

The horticultural staff conducted "Green In the City", a class in urban horticulture, for the Parkway Program of the School District of Philadelphia. This was the fifth year the Society was involved in the alternative school program. The ten-week course covered many aspects of growing plants in the city from the amateur's and professional's points of view. Classes included a walking tour of the Wissahickon with Frederic L. Ballard; visits to the architectural design firm of Semanko-Bobrowicz; a trip to Longwood Gardens and the Morris Arboretum; and lectures by members of the PHS Staff. Several students in the class participated in the spring Flower & Garden Show as members of the PHS work crew.

Horticultural Therapy

PHS developed an all-day horticultural therapy symposium for interested community leaders. The 85 people who attended, represented the medical profession, the federal government, institutional administration and volunteer services.

Volunteers and professionals exchanged information and ideas. Many of the conferees sufficiently valued their contacts with this new network to commit themselves to the recently formed National Council for Therapy and Rehabilitation through Horticulture, an organization that PHS has been involved with since its founding.

Free Plant Clinics

More than 1,000 people participated in the monthly Free Plant Clinics held at the Society's Headquarters on eight Sundays during the year. Visitors to the clinics brought sick plants and a multitude of questions that were handled by the horticultural staff.





BICENTENNIAL MOON TREE

SYCAMORE PLANTED MAY 6, 1975
FROM SEED CARRIED TO THE MOON
BY ASTRONAUT STUART A. ROOSA
ON APOLLO XIV, FEBRUARY 1971

NATIONAL AERONAUTICS & SPACE ADMINISTRATION
FOREST SERVICE USDA

10,000 TREES

Committee

C. Stuart Brown
Chairperson
Mrs. John W. Appel
Mrs. Paul Betancourt, Jr.
Frederic W. Clark
Nancy Clark
Lawrence Formica
Mrs. Eugene G. Grace
Mrs. Adolphus Lewis, Sr.
Mrs. David Linforth
John J. Morley
Mary Clay Reed
Henry H. Reichner, Jr.
Mrs. Richard T. Saler
Mrs. Walter Smedley
Bradshaw Snipes
Kurt A. Solmssen
John E. Strong
Mrs. Morris W. Stroud, 3rd

More than \$83,000 was collected during the program's second fiscal year. Over 3,000 trees were planted in 19 city parks in the same time period. Collected by year-end: approximately \$164,000; planted 4500 trees in 31 city parks.

FLOWER SHOWS

1975 Philadelphia Flower & Garden Show

Philadelphia Civic Center
March 9 through March 16
Attendance: 180,000

Thirty-six thousand square feet were added to the exhibit space for the 1975 Show. The new total footage of 180,000 square feet allowed better distribution of exhibits, better traffic flow and more room for resting and eating. Despite a record attendance, overcrowding experienced in recent shows was virtually eliminated.

Special features of the show were an 8,000 square foot park-like entrance feature with nearly 15,000 bulbs in bloom, a timely 5,600 square foot year-round vegetable garden and, for the first time anywhere, the use of a computer to answer gardening questions.

There were 77 major exhibits, 158 entries in the flower arranging classes and 828 entries in the horticultural classes.

Flower & Garden Show Committee

L. Wilbur Zimmerman
Chairperson
Mrs. Eugene G. Grace
Vice-Chairperson
Mrs. Francis Ballard
Mrs. Charles E. Barnes, Jr.
Mrs. Charles Becker, Jr.



Mrs. Norman S. Bemis
Mrs. Nathaniel Bowditch
Mrs. William Buchanan
George R. Clark
Mrs. H. F. Coates
Mrs. Mercade A. Cramer, Jr.
Mrs. Edward E. Cullen, 3rd
Mrs. G. Morris Dorrance
Mrs. Hubert P. Earle
Mrs. John Eiman
Herbert W. Goodall, Jr.
Mrs. Thomas M. Hyndman
Mrs. Henry B. King
Mrs. John D. Lohmeyer
William D. MacDowell
Henry D. Mirick
J. Liddon Pennock, Jr.
Mrs. Alfred W. Putnam
Mrs. C. Madison Riley
Mrs. Edward C. Rorer
Mrs. George W. Schelling
Owen Schmidt
Mrs. J. Brooks Semple
J. Franklin Styer
Mrs. William Ward, 4th
Mrs. P. L. Welsh
Mrs. John G. Williams

1974 Harvest Show

**Memorial Hall, Fairmount Park
Saturday & Sunday, September 28&29**

Each year the Harvest Show draws a return group of loyal and committed visitors, as well as substantial numbers of new visitors. It is a show whose popularity has been built up by word-of-mouth. Its hominess and intimacy suits the person who enjoys examining up close the lovingly polished fruits and vegetables. Its spectrum of colors, ranging from the muted velvety tones of dahlias to the spectacular reds of tomatoes to the yellows of corn to the neutral tones of grain, compare favorably with the brilliance of spring colors. The variety of textures and shapes of the greenhouse plants are an inspiration to those looking for challenges.

Philadelphia Flower & Garden Show



Nothing is forced for this Show. It is the pleasant end of summer's work.

The exhibitors cannot be easily categorized: they encompass both the young and old; those of modest means and the affluent, and the highly skilled as well as the novice.

Committee

Mrs. William Balderston,
Chairperson
Mrs. William E. Detweiler
Vice-Chairperson
Mrs. Sydney J. Barnes
Wilbur Beck
Mrs. Preston D. Carter
Mrs. Allen Corson, Jr.
Mrs. M. A. Cramer, Jr.
Mrs. Robert N. Drake
Mrs. William Eckfeldt
Mrs. Thomas B. Everist
Mrs. Morton Fellheimer
Mrs. Francis L. Harrigan
Mrs. George A. Hewitt

Mrs. Robert H. Hilderbrand
Mrs. Huntingdon Jackson
Mrs. William E. Lappin
Marie Louise C. Lee
Mrs. Melvin Lucas
Erich Meitzner
Mrs. John L. Metzger
Mrs. Ward C. Miller
Mrs. Clark R. Morris
Mrs. Ernest Morton
Mrs. Victor J. Roberts
Patricia Sonneborn
Mrs. Lyle R. Tanner
Mrs. S. Newbold van Trump, Jr.
Mrs. Rhoden E. Walls
Mrs. Douglas K. Whipple

Harvest Show



HEADQUARTERS EXHIBITS AND SHOWS

Yuletide Show

December, 1974

Committee

Mrs. L. Davis Jones

Chairperson

Doris Atkinson

Mrs. Thomas G. Brown

Mrs. Wilson B. Harkins, Jr.

Vice-Chairpersons

Mrs. John Brewer

Mrs. Edward Brinton

Mrs. Adolph Hirstius

Mrs. J. Preston Leavitt

Mrs. David Linforth

Mrs. Leonard W. Snyder

The number of people visiting the '74 Yuletide Show more than doubled over previous years. An enthusiastic Show committee undertook comprehensive research in the traditions of centuries crossing over into numerous cultures. Their exhibit surveyed the ages recreating designs from the pagan and early Christian eras through other periods: medieval, renaissance, reformation, colonial and Victorian right up through the 20th Century. The exhibitors used a broad variety of horticultural materials to dramatize these symbolic festivals. It was a rare opportunity to see so beautifully illustrated the historical progression of this fascinating holiday.



Plant Society Shows

Pennsylvania Bonsai Society

Saturday and Sunday

November 2 and 3, 1974

29th Annual Rose Show of the

Philadelphia Rose Society

Saturday and Sunday

June 7 and 8

12th Annual Show of the Middle

Atlantic Regional Lily Group

Saturday and Sunday

July 12 and 13

Monthly Exhibits in the Society Headquarters

Exhibits Committee

Mrs. S. Newbold van Trump, Jr.,

Chairperson

Mrs. Norman S. Bemis

Mrs. Preston D. Carter

Mrs. Elmer Hartwick

Mrs. George A. Hewitt

Mrs. Milton Laden

Mrs. H. Vernon Lapp

Mrs. Edwin A. Peeples

Mrs. George A. Reed

Mrs. Victor J. Roberts

1974 July and August—Colonial
Gardening Exhibit

September—Home of the Flyers

October—Harvest Show Highlights

November—Pennsylvania Women of
Horticulture (authors)

1975 January—Indoor Light
Gardening

February-March—Plant Photography

April—Samplings from the Spring
Show

May—Plant Explorers

June—Plant Forms; Art Forms

AWARDS

Committee

J. Liddon Pennock, Jr.,
Chairperson
Mrs. John R. Clark
Richard W. Lighty
Mrs. Alfred W. Putnam
Bradshaw Snipes
J. Franklin Styer
Mrs. S. Newbold van Trump, Jr.

Distinguished Garden Awards

Mr. & Mrs. Robert S. Benepe
Mr. & Mrs. William L. Collins
Mr. & Mrs. Franklin d'Olier, Jr.
Mr. & Mrs. H. Thomas Hallowell, Jr.
Mr. & Mrs. Harold F. Johnson
Mr. & Mrs. K. Laughlin
Mr. & Mrs. James N. Wallace
Mr. & Mrs. Charles D. Webster
Mr. & Mrs. Elwood Whitney

The 1974 Landscape Horticulture Awards of the Greater Philadelphia Chamber of Commerce in Cooperation with the Pennsylvania Horticultural Society to:

Oxford Valley Mall
Rohm & Haas Co.
Federal Reserve Bank of Philadelphia
Burlington Industries, Inc. Lees
Division
Friends Hospital
The American College of Life
Underwriters

The 1974 PHS Horticultural Sweepstakes Trophy for the accumulation of the greatest number of blue ribbons in the Horticultural Classes of the Philadelphia Flower & Garden Show and the Harvest Show to:
Nancy D. Kolb

The 1975 PHS Horticultural Sweepstakes Trophy for the accumulation of the greatest number of blue ribbons in the Horticultural Classes of the Philadelphia Flower & Garden Show and the Harvest Show to:
Mrs. Sidney Keith

1975 PHS Annual Award to Outstanding Junior Horticulturist in the Delaware Valley to:
Francine M. Rausch, First place
Hugh Darlington, Second place

Major Flower Show Awards

1975 Philadelphia Flower & Garden Show

The Pennsylvania Horticultural Society Flower Show Award for the best in show in the following categories:

Educational Exhibit

W. Atlee Burpee Company

Floral Exhibit

Muehlmann's Greenhouses

Landscape Exhibit

Gale Nurseries

Special Exhibit

Pennsylvania Bonsai Society

The Pennsylvania Horticultural Society Awards of Merit to:

Allied Florists of Delaware Valley
American Rhododendron Society
American Rock Garden Society
County Line Landscape Nursery
Delaware Valley College of
Science and Agriculture
De Wilde's Rhodo-Lake Nursery
Fairmount Park
Hansen Brothers Nurseries
Phila. Chapter, Indoor Light
Gardening Society
International Shade Tree
Conference
Judd's Hollylan Nurseries
Meadowbrook Farm
Middle Atlantic Carnation Growers
Pennsylvania Nurserymen's
Association
Philadelphia Area Daffodil Society
Philadelphia Cactus and
Succulent Society
Philadelphia Zoological Society
George Robertson & Sons, Inc.
Rosade Bonsai Studio
Roses, Inc.
Schuylkill Valley Nature Center
Cornelius J. Sikking
Southeastern Pennsylvania
Orchid Society
Star Roses
Vick's Wildgardens, Inc.

The Pennsylvania Horticultural Society Horticultural Sweepstakes Trophy

for the accumulation of the greatest number of points in the Horticultural Classes to:

Nancy D. Kolb

The Pennsylvania Horticultural Society Room Award

for the outstanding Blue Ribbon winner in the Room Classes to:

Country Gardeners

The Pennsylvania Horticultural Society Table Award

for the outstanding Blue Ribbon winner in the Table Classes to:

Providence Garden Club

The Pennsylvania Horticultural Society Flower Arranging Sweepstakes Trophy

to the individual accumulating the greatest number of points in the Arrangement Classes Section to:

Mrs. Harry C. Groome, Jr.

The Pennsylvania Horticultural Society Club Sweepstakes Award

for the accumulation of the greatest number of points in the Arrangement Classes Section to:

Four Counties Garden Club

1974 Harvest Show

The Flower Show Award of the Pennsylvania Horticultural Society for an exhibit of extraordinary merit, which stimulates an interest in horticulture to:

Bromeliophiles of Greater Philadelphia

Horticultural Sweepstakes Award to the individual winning the greatest number of Blue Ribbons in the Horticultural Section to:

Mrs. Lawrence Billau
Frank C. Wuest

The Sweepstakes Award Arrangement

to the individual winning the greatest number of Blue Ribbons in the Arrangement Section to:

Mrs. John R. Larkin

The Pennsylvania Horticultural Society Club Sweepstakes Award

to the Club winning the greatest number of Blue Ribbons in the show to:

Trevoise Horticultural Society

Presented at Other Flower Shows

The Pennsylvania Horticultural Society Medal to:

Schools in Youth Exhibit at the Chicago Flower and Garden Show.

William A. Coolidge, Topsfield, Mass. at the New England Spring Garden and Flower Show.



SERVICES

Library

Committee

Barbara H. Emerson,
Chairperson
Frederic W. Clark
George R. Clark
Bessie Greenawalt
George M. Harding
Marianna Merritt Hornor
Kitty Hoopes Lapp
Richard W. Lighty
Lee Morris Raden
Adolph G. Rosengarten, Jr.
Elisabeth Woodburn

Circulation

More than 6,000 books, journals and pamphlets circulated from the PHS Library this past year. In addition, 60 slide sets and films were also circulated. Members of the American Rock Garden Society borrowed 750 books as part of the PHS-ARGS library agreement.

Friends of the Library

Friends of the PHS Library contributed \$4,300. Their contributions will go a long way to support the Library's Bicentennial project.

Publications

The *Green Scene* was distributed more extensively this year than in the past: Frelinghuysen Arboretum and Horticultural Society of Maryland have arranged to receive the *Green Scene* for their entire membership by special arrangement with PHS and their governing boards. In addition, 11 institutions including plant stores, arboretums, nurseries and cultural institutions are selling the *Green Scene* at their sales counters.

Gardens

Garden Volunteers

Edward Doelp
Jane Inverarity
Helen Kaufman
Miriam Kroungold
Kitty Hoopes Lapp
Marjorie Maurer
Ann McPhail
Virginia Parker
C. J. Van Arsdall
Polly Ann Van Arsdall
Frances Vollmer
Benjamin Wilson

Seldom during the past year has the 18th Century Garden been without at least one group of visitors; often the walks and gazebo were filled to capacity. The increased number of visitors combined with a frustrating growing season put a heavy load of work on the faithful group of garden volunteers. In drizzling rain and sweltering heat and humidity, the volunteers completed over 800 hours maintaining the gardens.

In addition to the 18th Century garden, the volunteers kept the Bishop White Garden at the corner of 3rd & Walnut and the vegetable and herb garden in the rear of the Society's headquarters in top form.



CONTRIBUTIONS

Major Contributors

The Arcadia Foundation
Henrietta E. Bachman
Mr. & Mrs. Lloyd Balderston
Mr. & Mrs. John W. Batdorf
Bell Telephone Company
Mrs. V. R. Bieber
Mrs. E. Billingslea
Mr. & Mrs. John D. Briner
Mrs. E. M. Buckley
David Burpee
Mr. & Mrs. J. Eiseman
Mr. & Mrs. W.F. Fischer, Jr.
Mr. & Mrs. E.L. Forstall
Mrs. Jack M. Friedland
Mr. & Mrs. Logan B. Gill
Glenmede Trust Company
Mrs. F. Woodson Hancock
Mr. & Mrs. B.H. Hunter
Mr. & Mrs. Orton P. Jackson
Horace F. Janney
Mr. & Mrs. C.L. Johnson
Mr. & Mrs. Harry I. Lauer
Mrs. Arthur Littleton
The Mariner Foundation
Mr. & Mrs. Wallace Martindale, Jr.
Harriet T. Mitchell
Mr. & Mrs. Elliston P. Morris
Mrs. Thomas R. O'Malley
Mr. & Mrs. George S. Opp
Dr. & Mrs. Richard H. Peck
The Philadelphia Foundation
Clara B. Pitcher
Elizabeth Glenn Ravdin
Dr. & Mrs. J. Pancoast Reath
Adolph G. Rosengarten, Jr.
Mrs. George Otis Spencer
Mrs. H.D. Steinbright
Mrs. Thomas D. Thacher
Mrs. & Mrs. Raymond A. Townley
Warwick Foundation
Mr. & Mrs. R. Chase Whitaker
Eleanor M. Winter

In addition, 297 members donated \$100 or more to the 10,000 Trees program. Their names are on file in the Society offices and will be permanently recorded in Memorial Hall.

PREVIEW DINNER

1975 Flower & Garden Show, Preview Dinner, March 8, 1975

1,739 Society members and guests enjoyed the dinner and preview.

Committee

Elizabeth Chew Bennett,
Chairperson
Mrs. James F. Bodine,
Co-Chairperson
Mrs. John K. Binswanger
Mrs. John A. Brown
Mrs. Morris Brownell, Jr.
Mrs. George R. Clark
George R. Clark
Mrs. Edward E. Cullen, 3rd
Edward E. Cullen, 3rd
Mrs. Franklin d'Olier, Jr.
Mrs. George W. Edwards, Jr.
Mrs. Thomas H. Ginley
Mrs. Thorp Van D. Goodfellow
Mrs. Eugene G. Grace
Mrs. Bruce H. Greenfield
Quita W. Horan
Mrs. Horace C. Jones
Daniel Layman
Mrs. Andrew W. Porter, Jr.
Lee M. Raden
Mrs. Bayard H. Roberts
Mrs. Paul Rosenbaum
Mrs. Edward Starr, 3rd
Mrs. Geoffrey Stengel
Mrs. Leon C. Sunstein, Jr.
Mrs. John Hoover Thacher
Mrs. W. Cooper Willits
Mrs. Leonard A. Yerkes

FINANCIAL REPORT

Treasurer's Comments

Your Society enjoyed another successful year and remains in excellent financial condition. Income rose sufficiently to enable the Society to cover public service projects and Bicentennial expenses without recourse to the special reserve funds established for these purposes, as reflected on our Balance Sheet below.

Respectfully,
 Alan Crawford, Jr.
 Treasurer

The Pennsylvania Horticultural Society Balance Sheet June 30, 1975 and 1974

Assets

	1975			1974	
	Operating Fund	Endowment Funds		Total	
		Unrestricted	Restricted		Total
Cash (Savings accounts 1975 \$126,131 and 1974 \$38,085)	\$ 45,289	\$110,854	\$5,354	\$161,497	\$ 68,665
Marketable securities (market value 1975 \$632,986 and 1974 \$607,849)	219,434	428,664		648,098	691,498
Furniture, equipment and improvements	106,443			106,443	99,568
Accumulated depreciation and amortization	<u>76,851</u>			<u>76,851</u>	<u>69,670</u>
	<u>29,592</u>			<u>29,592</u>	<u>29,898</u>
Books and portraits	<u>26,909</u>			<u>26,909</u>	<u>26,909</u>
	<u>\$321,224</u>	<u>\$539,518</u>	<u>\$5,354</u>	<u>\$866,096</u>	<u>\$816,970</u>

Liabilities

Sales tax payable	\$ 11			\$ 11	\$ —
Payroll taxes withheld					283
Special Fund — "10,000 Trees"	49,288			49,288	24,141
Pension Fund		\$ 62,950		62,950	23,200
Reserve for Flower Show losses and public service projects	195,000			195,000	170,000
Principal balance	<u>76,925</u>	<u>476,568</u>	<u>\$5,354</u>	<u>558,847</u>	<u>599,346</u>
	<u>\$321,224</u>	<u>\$539,518</u>	<u>\$5,354</u>	<u>\$866,096</u>	<u>\$816,970</u>

The accompanying notes are an integral part of these financial statements.

**The Pennsylvania Horticultural Society
Statement of Operating Fund Revenue and Expenses
for the Years Ended June 30, 1975 and 1974**

	1975	1974
Revenue		
Membership dues	\$ 83,661	\$ 67,676
Invested funds and savings accounts	33,995	35,213
Schaffer Trust	16,237	17,883
Designated contributions	15,820	9,885
Flower & Garden Show	509,332	458,249
Preview Dinner	94,777	88,343
Fees and sales	60,279	34,437
Other activities	10,967	14,556
	<u>825,068</u>	<u>726,242</u>
Expenses		
Salaries	193,184	176,916
Other employee expenses	65,200	30,640
Building maintenance and utilities	17,398	13,510
Depreciation and amortization	7,182	6,348
Administrative supplies and expense	36,230	28,822
	<u>319,194</u>	<u>256,236</u>
Less allocation of overhead to Flower & Garden Show	99,232	81,201
	<u>219,962</u>	<u>175,035</u>
Publications	43,496	30,001
Flower & Garden Show, including allocation of overhead	404,708	344,488
Preview Dinner	35,721	29,462
Library and educational programs	20,819	16,397
Other activities	30,715	42,472
Bicentennial and public service projects	67,622	61,798
	<u>823,043</u>	<u>699,653</u>
Excess of revenue over expenses	<u>\$ 2,025</u>	<u>\$ 26,589</u>

The accompanying notes are an integral part of these financial statements.

**The Pennsylvania Horticultural Society
Statement of Principal
for the Years Ended June 30, 1975 and 1974**

	1975			1974
	Operating Fund	Endowment Funds		Total
		Unrestricted	Restricted	Total
Balance, beginning of year	\$ 99,900	\$494,092	\$5,354	\$599,346
Excess of Operating Fund revenue over expenses	2,025			2,025
Transfer to Reserve for Flower Show losses and public service projects	(25,000)			(25,000)
Unrestricted contributions		16,575		16,575
Loss on sale of investments		(36,399)		(36,399)
Life membership dues		2,300		2,300
Balance, end of year	<u>\$ 76,925</u>	<u>\$476,568</u>	<u>\$5,354</u>	<u>\$558,847</u>
				<u>\$606,933</u>

The accompanying notes are an integral part of these financial statements.

The Pennsylvania Horticultural Society Notes to Financial Statements

Significant Accounting Policies

The financial statements are prepared on a modified cash basis. Marketable securities, furniture, equipment and improvements are carried at cost. Books and portraits are carried at 1971 ledger values, and subsequent additions have been charged to expense.

Depreciation of furniture and equipment is computed on the straight-line method over the estimated useful lives which range from five to ten years. Improvements to buildings are amortized over the term of the building occupancy agreement.

Life membership dues and unrestricted contributions are added to the Unrestricted Endowment Fund, which is a Board-designated fund without restriction on principal or income.

Investments

Operating Fund assets include securities segregated to provide a funding of the reserve for Flower Show losses and public service projects.

In addition, the Society is the income beneficiary of a trust, under deed of Elizabeth Schaffer, comprised of securities with a market value of \$300,466 and \$286,235 at June 30, 1975 and 1974, respectively.

Special Fund — "10,000 Trees"

Contributions to the Special Fund — "10,000 Trees", an ongoing campaign to raise funds for the planting of trees in Philadelphia parks, administered by the Society, amounted to \$83,134 and \$47,174 in the years ended June 30, 1975 and 1974, respectively. The sum of \$60,440 was expended for tree planting in 1975 and \$24,206 in 1974. The balance of the Fund, \$49,288 and \$24,141, at June 30, 1975 and 1974, respectively, was deposited in a savings account, the interest on which was added to the Fund.

Pension Fund

The Society has an unfunded pension plan covering all full-time employees. The amounts charged to operations, \$39,750 for 1975 and \$6,600 for 1974, were transferred to the Unrestricted Endowment Fund for investment.

By action of the Executive Council, the assets of the pension fund were transferred to a trustee account with a bank subsequent to June 30, 1975, and the plan was modified to conform to requirements of the Pension Reform Act of 1974.

Building Agreement

The Society occupies facilities in Independence National Historical Park. The provisions of the agreement with the Department of Interior require that the Society assume responsibility for the routine operation, maintenance, and minor repairs to the interior of the building, the garden area and all related machinery and equipment. The Society is required to deposit \$100 per month in a fund for major repairs and replacements to buildings, equipment and grounds. The agreement terminates in 1983 and is renewable at the option of the Federal Government.

The Pennsylvania Horticultural Society Report on Examination Years Ended June 30, 1975 and 1974

The Council of The Pennsylvania Horticultural Society
Philadelphia, Pennsylvania

We have examined the balance sheet of The Pennsylvania Horticultural Society at June 30, 1975 and 1974, and the related statements of Principal and Operating Fund revenue and expenses for the years then ended. Our examination was made in accordance with generally accepted auditing standards and, accordingly, included such tests of the accounting records and such other auditing procedures as we considered necessary in the circumstances.

The financial statements are prepared on a modified cash basis, in that items of revenue and expenses (except for depreciation) are recorded as received and paid. Preparation of the financial statements on the accrual basis would require that a deferred credit of approximately \$42,000 and \$33,000 for June 30, 1975 and 1974, respectively, for membership dues paid in advance be shown on the balance sheet.

In our opinion, such financial statements present fairly the financial position of The Pennsylvania Horticultural Society at June 30, 1975 and 1974 and the Operating Fund revenue and expenses and changes in Principal for the years then ended, on the basis indicated in the preceding paragraph, applied on a consistent basis.

Main Lafrentz & Co.
Certified Public Accountants
Philadelphia, Pennsylvania
August 15, 1975

MEMBERSHIP

Membership June 1974 — 5,388

Membership June 1975 — 5,531

The names and addresses of all current members are on file. Of the total members, 183 were contributing members and 59 sustaining members in the fiscal year.

New Life Members 1974-75

Mrs. Lindley Boyer

Mrs. W. Emory Burnett

Paul P. McFarland

Mr. and Mrs. Bayard H. Roberts

Mrs. Arthur Rosenlund

Mrs. William E. Vauclain

Harold C. Wessel

Mrs. Daniel S. Whiteman

OTHER ACTIVITIES

Miscellany

25,510 people came to Society Headquarters from July 1974-June 1975. That means that we had an increase of 11,000 visitors during the pre-bicentennial period over the previous year.

Our horticultural inquiries increased 20% over last year's, i.e. we had more than 6,000 letters and phone inquiries about plants and their problems.

Organizations Meeting at PHS Once or More During the Year

American Horticultural Society

City Dept. of Recreation,

Neighborhood Park Program

Cooperative Extension Service,

Penn State University

Delaware Valley Chapter,

American Rock Garden Society

Friends of Powel House

Greater Philadelphia Cultural Alliance

Horticultural Curriculum Orientation, School District of Phila.

John Bartram Association

Landscape Design Critics Council,

Nat'l Council State Garden Clubs

Liberty Bell Chapter, American

Gloxinia and Gesneriad Society

Middle Atlantic Regional Lily Group

Neighborhood Garden Association

Northeast Region, American Orchid Society

Parkway Class, School District of Philadelphia

Pennsylvania Bonsai Society

Philadelphia Chapter,

Cactus and Succulent Society

Philadelphia Chapter,

Indoor Light Gardening Society

Philadelphia Chapter,

American Rose Society

Philadelphia Chapter,

American Rhododendron Society

Philadelphia Committee,

Garden Club of America

Philadelphia Convention & Visitors

Bureau — Guides Orientation

Philadelphia Society for Promoting Agriculture

Young Audiences, Inc.

Staff Members Attended or Participated in Meetings of the Following Organizations:

- American Association of Botanic Gardens and Arboreta
- American Bonsai Society
- American Horticultural Congress
- * American Horticultural Society
- American Horticultural Society, Dumbarton Oaks Conference on Garden Restoration and Preservation
- American Rock Garden Society, Delaware Valley Chapter
- Community Gardening Conference, Gardens for All, Inc. Delaware Valley Chapter
- American Rock Garden Society
- * Earth Congress
- Garden Club of America, Medal Award Committee
- * Gardens Writers Association of America
- Governors Anti-Inflation Garden Conference
- * Greater Philadelphia Cultural Alliance
- * International Shade Tree Conference
- * John Bartram Association
- National Associations of Exposition Managers
- National Council for Therapy and Rehabilitation through Horticulture
- * Neighborhood Gardens Association
- Pennsylvania Bonsai Society
- Pennsylvania Environmental Council
- Philadelphia '76
- Philadelphia Chapter, American Rhododendron Society
- Philadelphia Chapter, American Rose Society
- Philadelphia Chapter, Indoor Light Gardening Society
- Philadelphia County Extension Service Executive Committee
- * Philadelphia Festival
- Philadelphia Public Relations Association
- Professional Fund Raisers Association
- * Women in Communications, Inc.
- * Served on governing body

In addition to routine duties

Staff members served as judges at five flower shows and garden competitions. Six staff members staged their own exhibits or made entries in both the Harvest and Flower & Garden Show. Staff also lectured to or cooperated with projects of the:

Free Library of Philadelphia
Frelinghuysen Arboretum Members
Girl Scouts of Philadelphia
Indoor Light Gardening Society
of America
Liberty Bell Chapter, American
Gloxinia and Gesneriad Society
The Massachusetts Horticultural
Society
New Jersey Extension Service,
Rutgers University
New York Botanical Gardens
Not For Women Only — Barbara
Walter's National TV Show
Temple University, School of
Journalism

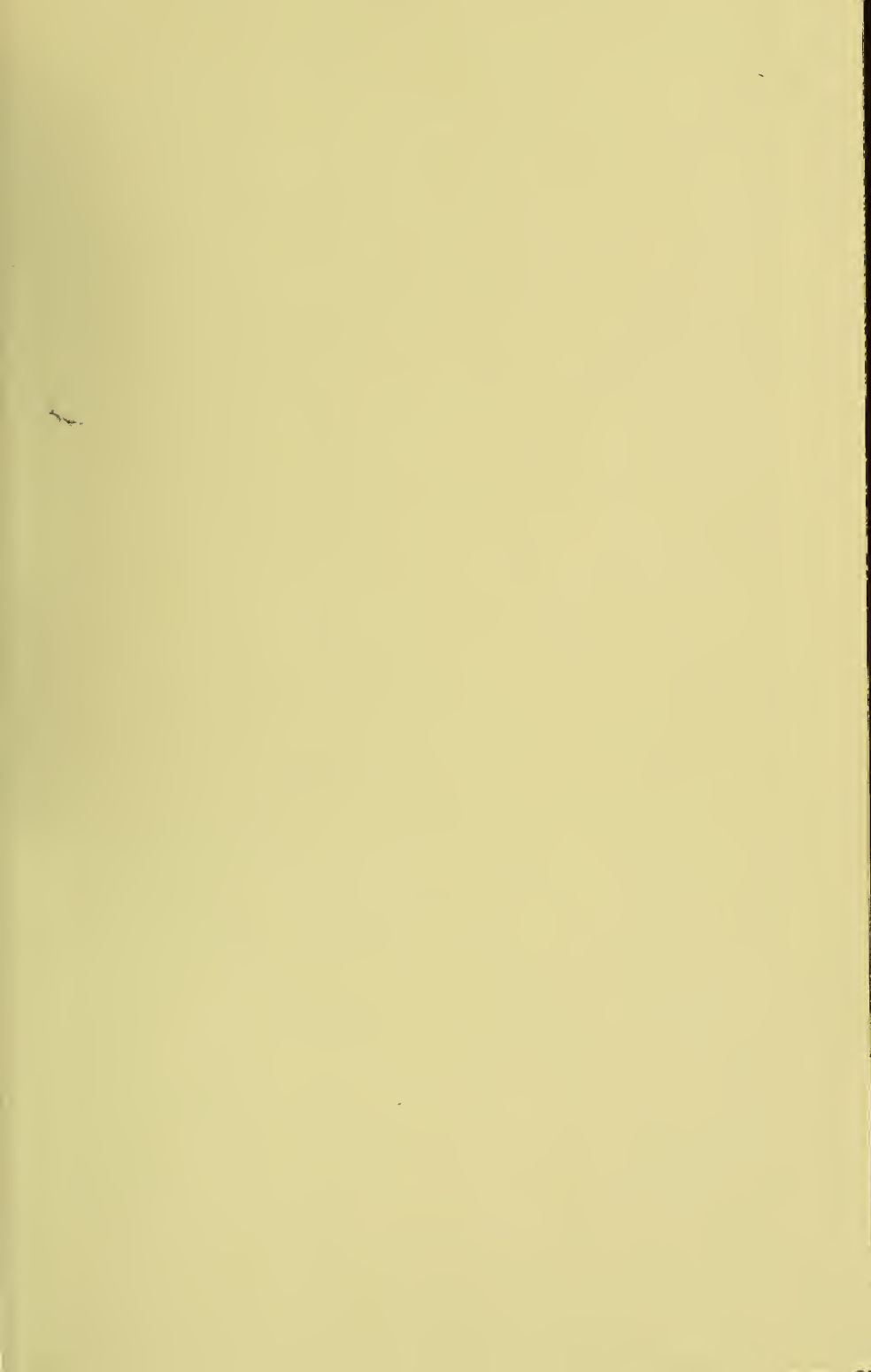
PHS Staff

Ernesta D. Ballard
President
Charlotte L. Archer
Members Activities
Linda Bernstein
Secretary
Blaine Bonham
Director of Community Activities
Jean Byrne
Editor
Patricia M. Cain
Administrative Assistant
Grace M. Cole
Membership Secretary
Cheryl A. DeLisle
Secretary
Rick Fredette (to 9/74)
Educational Coordinator
F. Evelyn Hett
Flower Show Secretary
Benjamin Johnson
Custodian
Carol Lindemann
Secretary
Edward L. Lindemann
Horticulturist
James P. McCarvill
Flower & Garden Show Manager
Julie Morris
Horticultural Librarian
Marie Rodia
Receptionist
Carol Sclafani
Field Horticulturist
Frances Sinclair
Cataloger
George C. Sinkler
Assistant to the President (to 9/74)
Theodora Welgoss
Bicentennial Projects Director
Honora Wesley-Burke
Book Restorer
Mary Williams
Housekeeper



Photo Credits

Carole Bell, pp 9,10; John Condax, p. 5;
Edmund B. Gilchrist, Jr., pp. 2,7,13,14,15,
17,18,21; Myrna Ludwig, pp. 11,23;
Vinciguerra, p. 16.







**the pennsylvania
horticultural society
yearbook 1976**



yearbook

July 1, 1975 to June 30, 1976

The Pennsylvania Horticultural Society
Independence National Historical Park
325 Walnut Street
Philadelphia, Pennsylvania 19106
(215) WA 2-4801

Contents

- 2 From the Chair
- 3 From the President
- 5 Administration
- 8 Members Activities
- 10 Community Activities
- 13 Flower Shows
- 17 Headquarters Exhibits
and Shows
- 18 Services
- 20 Awards
- 24 PHS Bicentennial
Projects
- 28 Contributions
- 29 Preview Dinner
- 29 Membership
- 30 Financial Report
- 34 Other Activities

Cover photo:
PHS bicentennial symposium at Winterthur.

At right, topiary created by Gisele Walls





From the Chair

As PHS nears the beginning of its 150th year—the official date of our founding is November 24, 1827—we can say with assurance that the Society is flourishing.

Abundant evidence to support this view can easily be found in this report, which covers in some detail our diverse activities during the 12-month period ended June 30.

Three factors, I believe, are largely responsible for our continuing progress.

Thanks primarily to the success of our spring Flower and Garden Show and annual preview dinner, we have the financial resources needed to carry on a range of innovative horticultural programs, which benefit not only our members but the general public as well. We also have a highly knowledgeable, versatile and dedicated staff to develop and supervise these programs.

And, most encouraging of all, we have an ever-growing number of member volunteers with varied skills and interests who work hard and effectively to support their Society's activities. In the past year, this volunteer effort was encouraged and coordinated—with all-important staff assistance—by 16 different committees made up of about 250 members. No one knows for certain the exact number of volunteers who worked on PHS projects during the year, but an educated guess is that about one in three of our 6000 members probably did more for the Society than just pay their dues.

That is most certainly a healthy situation—one that bodes well for the horticultural welfare of the Delaware Valley in the years to come.

My thanks on behalf of the Executive Council go to all who have had a hand in making the past year a truly flourishing one for PHS.

Herbert W. Goodall, Jr.
Chair, PHS Executive Council



From the President

As we complete our 149th year and begin to prepare for our grand sesquicentennial celebration, it is gratifying to report that the Society's finances are sound; its staff is capable; and its programs are well-received. Most important, the Society is playing a larger part in the cultural and educational life of the Delaware Valley than at any time in recent decades.

One aspect that is particularly pleasing to me is the protection we are now able to give our employees. For several years we have had medical-surgical and major medical insurance. In the past year we have adopted a long-term disability plan and a modern pension plan which meets all the requirements of the Employee Retirement Income Security Act, and we have taken the first steps to secure it with a trust fund held by an independent trustee.

Another recent development of great importance is our community garden program, which consists simply of providing encouragement, horticultural information, organizing experience and a modicum of tangible assistance to inner city groups desiring to have vegetables and flower gardens. Two staff members spend the fall and winter working with teachers, block leaders and others, who take the plans back to their classrooms, clubs, recreation centers and block meetings. In the spring and summer the staff drives from site to site in our specially equipped Gardenmobile delivering seeds, fertilizer and advice. In the past year we arranged with the Neighborhood Garden Association to carry out the staff work of its garden block program as part of our community garden activities, leaving the Association to concentrate on planning, evaluation and funding. This

arrangement has been successful beyond all expectations.

Society publications have found their way into private and public libraries throughout the land. Requests for our *Curriculum Guide* come to us from all over. Our bicentennial exhibit catalogue, *From Seed to Flower* is a unique outline of Philadelphia's contribution to horticulture in the period from 1620 to 1876; it will be read and studied for years to come. *The Philadelphia Area Green Pages*, after a slow start, is now being used by an increasing number of gardeners in the Delaware Valley. And four other horticultural groups send our magazine the *Green Scene* to their members. Our own members often tell of their delight in its contents and format, and our editor is seldom at a loss for material.

I like to think that our members take pleasure in supporting our community benefit programs. Thousands of them have responded to the Society's major bicentennial program—the planting of 10,000 trees in Philadelphia's parks. But even if they consider only the direct benefits of Society membership to themselves, they are getting their money's worth. The lending privileges of the library would, alone, justify the modest dues, the free use of its resources has increased dramatically over the past decade. In 1966, we operated with a part-time librarian. Today we have two full-time librarians, a part-time book repair specialist and a summer student intern. The bulk of their time is taken up serving Society members.

Answering horticultural questions (approximately 7000) continues to be an enormously time-consuming activity for our horticultural staff. In order to handle the flood of telephone queries without jamming our regular switchboard, we will

continued

install, in July, a separate telephone line, which we call the horticultural "hot-line". We hope this will enable us to continue the service, but we feel a need to evaluate it during the coming year.

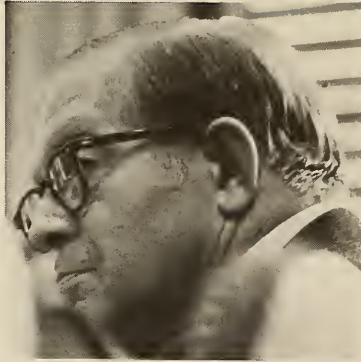
The Society's greatest visibility lies in its flower shows and exhibits, which may well be its greatest service to the community. The Philadelphia Flower and Garden Show, held each year in March at the Philadelphia Civic Center, is nationally acclaimed. Its strength is to be found in the skill and dedication of the committees, exhibitors and staff who plan, plant and run it. The smaller Harvest Show, held the last weekend in September in Memorial Hall is just as distinguished, although on a lesser scale, and attracts a different constituency of workers and visitors. The shows and exhibits staged throughout the year in the Society's headquarters in the Independence National Historical Park are both expert and varied. The bicentennial exhibit, which the exhibits committee worked on for over a year and completed for an April 6 opening, is particularly memorable.

This message does not attempt to be a comprehensive review of all the things we are doing. You will find them outlined and reported on in the following pages. My purpose here is simply to give you a feeling for some of the developments that have kept your Society healthy and, I like to think, productive.

Ernesta D. Ballard
President



administration



The Executive Council



The Executive Council



administration continued

Executive Council

Herbert W. Goodall, Jr.

Chair

L. Wilbur Zimmerman

Vice-Chair

Robert S. Ryan

Vice-Chair

Ernesta D. Ballard

President

Alan Crawford, Jr.

Treasurer

James P. McCarvill

Secretary

Elizabeth C. Bennett

George Borowsky

C. Stuart Brown

William C. Burleigh

Frederic W. Clark

George R. Clark

Mrs. John R. Clark

Barbara H. Emerson

William G. Foulke

Mrs. Eugene G. Grace

Mrs. Walter K. Howard

Mrs. Paul E. Kelly

John S. Kistler

Mrs. Nelson J. Leidner

Mrs. Adolphus Lewis, Sr.

Richard W. Lighty

Mrs. John D. Lohmeyer

William D. MacDowell

Henry D. Mirick

Craig S. Oliver

J. Liddon Pennock, Jr.

Mrs. Alfred W. Putnam

Henry H. Reichner, Jr.

Adolph G. Rosengarten, Jr.

Bradshaw Snipes

John E. Strong

Mrs. Morris W. Stroud, 3rd

J. Franklin Styer

Mrs. H. Rowland Timms

Mrs. S. Newbold van Trump, Jr.

Mrs. E. Perot Walker

Mrs. John G. Williams

Esther J. Winters

Minturn T. Wright, 3rd

Dorothy S. Young



Executive Committee

Herbert W. Goodall, Jr.

Chair

Alan Crawford, Jr.

Mrs. Paul E. Kelly

Lee M. Raden

Robert S. Ryan

Mrs. John G. Williams

L. Wilbur Zimmerman

↓

Nominating Committee

Mrs. Eugene G. Grace

Chair

William C. Burleigh

Alan Crawford, Jr.

Mrs. John D. Lohmeyer

Henry H. Reichner, Jr.

Robert S. Ryan

↓

Investment Committee

Alan Crawford, Jr.

Chair

William C. Burleigh

George R. Clark

Alfred S. Martin

Minturn T. Wright, 3rd

↓

Personnel Committee

Alan Crawford, Jr.

Mrs. Paul E. Kelly

Robert S. Ryan

Pension Plan Committee

Alan Crawford, Jr.

Mrs. Paul E. Kelly

Robert S. Ryan



members activities

Committee

George R. Clark

Chair

Mrs. Walter K. Howard

John S. Kistler

Mrs. John D. Lohmeyer

Mrs. Morris W. Stroud, 3rd

The Society invited members to five lectures and symposia, garden visits on two spring afternoons, and frequent meetings of eight plant societies that meet in the headquarters.

Special events were arranged for members. These included: the annual plant give-away, Harvest Show preview, Annual Meeting at the Independence National Historical Park Visitor Center, Christmas Show Open House following the Candlelight Stroll, New Year's Eve Open House preceding the moving of the Liberty Bell, and in spring, previews of the Flower & Garden Show and the PHS Bicentennial Exhibit, 'From Seed to Flower.'



Garden tours continue in the rain.

Registration events (minimal fee) included three multi-session courses (container gardening, indoor bonsai, landscape design), six workshops (making pressed plant pictures, seed mosaics, wreaths) a lecture-demonstration co-sponsored with Ikebana International, and 11 field trips to the Pine Barrens, Barnes Arboretum, Green Lane area, Henry Foundation, Brooklyn Botanic Garden, and Philadelphia Zoo. Subscription suppers preceded three evening events.

Members also took part in specially planned trips to Scandinavia, Mayaluum, the British Isles, and Dutchess County, New York.

All activities were well-attended and registration events were fully subscribed.

Garden Visits

May 1976 Chestnut Hill

Mr. & Mrs. Logan B. Gill

Mr. & Mrs. Horace C. Jones

Mr. & Mrs. Alfred S. Martin

Mr. & Mrs. Frederick W. G. Peck

June 1976 Main Line

Mr. & Mrs. Walter K. Howard

Mrs. Walter Rebmann

Mr. & Mrs. Charles S. Truitt

Mr. & Mrs. Algernon Roberts

Dr. & Mrs. L. Wilbur Zimmerman

June 1976 Dutchess County, N.Y.

Mr. Harrison B. Cultra

Mr. & Mrs. Howland Davis

Mrs. Lytle Hull

Mr. Chauncey Stillman

Mr. & Mrs. Oakleigh B. Thorne

Mr. William S. Wasserman



Member's garden tours, Chestnut Hill.



community activities



Committee

L. Wilbur Zimmerman
Chair

Mrs. McBee Butcher
Mrs. John R. Clark
Mrs. Adolphus Lewis, Sr.
Mrs. H. Rowland Timms
Esther J. Winters
Mrs. Andrew Wright
Minturn T. Wright, 3rd

6

School Program

For the third year "Indoor Gardening In The Classroom" was taught to teachers in the Philadelphia School District, but for the first time 200 teachers received in-service credit for completing the course, which ran 16 hours over an eight-month period. Since its inception 600 teachers have attended these classes, and armed with the PHS-developed horticultural curriculum guide and materials and ideas, they have covered classroom desks, windowsills, and benches with plants, terrariums, dish gardens, and rooting trays.

Evidence of success was obvious at the Children's Flower Show last November, sponsored by St. Christopher's Hospital and the Society: Philadelphia school children submitted half of the 400 entries. Almost all their teachers were students in the PHS program.

NGA-PHS Cooperative Effort

In March, the Neighborhood Garden Association undertook with the Society an agreement whereby PHS would implement their Garden Block Program, and NGA's area worker joined PHS's staff. The program assists interested people to improve neighborhood streets with planted window boxes and tire urns. Sponsoring garden clubs work with blocks, providing the flowers and gardening know-how for a two year

period, after which the blocks become autonomous. NGA sets up an annual sale to provide plants at wholesale prices to the independent blocks. PHS staff has developed a series of winter workshops for Garden Blocks and Community Vegetable Garden groups to further nurture an interest in horticulture in the urban environment.

Nineteen new blocks were planted in 1976, bringing the total of active blocks in the program to over 130.

Community Gardening

A well-formed, solid head of red cabbage, a 25 pound watermelon, vine-ripened tomatoes, eggplants, and squash, sunflower heads, arrangements of garden greens dotted with red peppers, carrots and beets—these vegetables captured the eyes of the judges at the First Annual Community Vegetable Gardens Harvest Party at the Society headquarters last fall. All the produce exhibited had been grown on converted vacant lots throughout the city, which just a few months before had been dumping grounds for trash and debris. All of the exhibitors were city dwellers, some gardening for the first time and others thankful to get back to the soil after many years absence.

Thirty-seven groups, all part of the Society's Community Vegetable Gardening program,

community activities continued

completed the 1975 growing season. Enthusiasm fostered by success created such a demand that 40 new groups joined the growing family of PHS-sponsored PhilaFarmers in 1976. Topsoil, organic material, peat moss, fertilizer, tools, fencing, seeds, and plants, plus a series of gardening workshops and newsletters, were provided by the Society and Bell Telephone Company. The Gardenmobile, during its regular visits to these city farms with supplies, suggestions, and information, noticed cultivated areas sprouting independently around Philadelphia. The idea is "catching on" and it is rewarding to see the concept of "greening the city" become a reality.

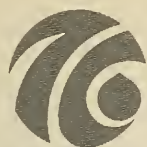
Free Plant Clinics

The PHS horticultural staff held a free plant clinic once a month on Sunday afternoons; the clinic was open to everyone. People brought their plants, and staff answered their questions about identification, culture, diseases and pests. From 50 to 75 people attended each session. A film about growing plants indoors was repeated throughout the afternoon.

Parkway Program

PHS has been involved with Parkway since 1970, teaching students about horticulture in an urban setting. The 1975 course in the fall included field trips to landscape architects' offices, the Morris Arboretum and Longwood Gardens. The students learned about how trees in the city are cared for, and they participated in several practical workshops at the PHS headquarters.

Twelve Parkway students took part in the ten week course. Several of the students returned to work at the 1976 Spring Flower and Garden Show.



flower shows

Philadelphia Flower & Garden Show



flower shows continued

1976 Philadelphia Flower and Garden Show

Philadelphia Civic Center

March 7 through 14

Attendance: 201,000

A number of the Show's major exhibitors chose the Nation's Bicentennial as their theme: a 1776 Spanish Mission, a Valley Forge Cabin, white and blue floral combinations. Others looked to the future: a solar greenhouse, gardening by computer and experiments in approaches to growing.

For the first time, the members' preview was held on the Saturday (March 6) before the public opening, and the major exhibitors awards luncheon was combined with the competitive classes award ceremony on the closing Saturday.

Princess Grace of Monaco judged pressed flower pictures and also attended the preview dinner. Of the 1,286 competitive classes entries 1,078 were in horticulture, which set a record.

Committee

William D. MacDowell

Chair

Mrs. Eugene G. Grace

Vice-Chair

Ernesta D. Ballard

Mrs. Norman S. Bemis

Herbert Bierberfeld

Mrs. James F. Bodine

Mrs. John P. Butler, 3rd

George R. Clark

Mrs. S. Grey Dayton

Mrs. Hubert P. Earle

Herbert W. Goodall, Jr.

Mrs. Thomas M. Hyndman

Mrs. W. Roy Kolb

Helen LeBlond

Mrs. John D. Lohmeyer

Henry D. Mirick

J. Liddon Pennock, Jr.

Mrs. Alfred W. Putnam

Mrs. C. Madison Riley

Mrs. J. Brooks Semple

Albert F. W. Vick, Jr.

Mrs. William Ward, 4th

Mrs. P. L. Welsh

Mrs. George I. Wright

L. Wilbur Zimmerman



Children's Flower Show of St. Christopher's Hospital for Children

sponsored by PHS
Tuesday and Wednesday, November
25 and 26
Galleria, Centre Square Building

Committee

John W. McWilliams
Chair



Mrs. John Thacher
Mrs. Henry B. King
Mrs. G. Morris Dorrance
Mrs. John W. McWilliams
Mrs. George B. Barnard

Junior garden clubs, 4-H clubs, public and private school students and community centers entered 450 exhibits.

Ten special exhibits included a pumpkin island; apple trees, scarecrows by the Fairmount Park Summer Day Camps, an effigy of Johnny Appleseed; apple dolls, corn pone or the uses of corn and an asphalt garden.

Enthusiastic teachers and students have requested that this show become an annual event. A second show has been planned for the fall of 1976.

1975 Harvest Show

**Memorial Hall, Saturday and Sunday
September 27 and 28**

Each year Delaware Valley gardeners stage and visit the annual Harvest Show held the last weekend in September in Memorial Hall, Fairmount Park. In spite of our 149 years of staging annual harvest shows, we doubt the weather has ever been less cooperative. In spite of torrential rains, nearly 700 people attended the Friday afternoon Preview held for members and specially invited garden clubs. Total attendance at the Show was 7,200. Two hundred and seventy exhibitors showed nearly 1,000 plants.

For the first time horticulturally related trade boots had a place at the Show; they offered spring flowering clubs, books, dried materials, plants and pumpkins.

continued

flower shows continued



Visitors entered the Harvest Show through a tent this year.

Committee

William C. Burleigh

Chair

Doris W. Atkinson

Mrs. William Balderston

Mrs. Norman S. Bemis

Mrs. Thomas G. Brown

Mrs. Preston Carter

Mrs. John R. Clark

Mrs. Alan Corson, Jr.

Mrs. Thomas F. Everist

Mrs. Morton Fellheimer

Mrs. William H. Gray

Mrs. Francis L. Harrigan

Mrs. Elmer Hartwick

Mrs. John F. Hayes

Mrs. Richard E. Heckert

Mrs. Robert H. Hilderbrand

Mrs. George A. Hewitt

Mrs. Melvin Lucas

Mrs. C. H. Marlar

Erich F. Meitzner

Mrs. John Metz, III

Mrs. Clark R. Morris

Mrs. Victor J. Roberts

Mrs. George W. Schelling

Mrs. Randolph M. Slater

Mrs. S. N. van Trump, Jr.

Mrs. E. Perot Walker

Mrs. John G. Williams

Benjamin Wilson

20



headquarters exhibits and shows

1975 Annual Holiday Show

December 5 to 30
Attendance: 4,644

Holiday decorations in twentieth century America are a complex interweaving of centuries of customs and traditions. Our Show looked back through time and created and re-created designs inspired by this heritage. The theme was Living Traditions of the Yuletide.

Committee

Chairs

Mrs. L. Davis
Mrs. Thomas G. Brown 3
Doris W. Atkinson

Pagan and Early Christian—350-1100

A.D.—Mrs. J. Preston Leavitt

Medieval—1100-1450—Mrs. Leonard W. Snyder

The Renaissance—1450-1600—
Susan C. Ward

The Reformation—16th and 17th
Centuries—Robert L. Osborne

The New World—18th Century—
Patricia Sonneborn

Victorian—19th Century—
Mrs. Adolph Hirstius

20th Century—Mrs. Edward Brinton

Special consultants worked on
each section of the Show.

Scriptwriter: Mrs. Charles Truitt

12th Annual Middle Atlantic Regional Lily Group

July 12 & 13, 1975

Alice H. Esslinger
Chair

Monthly Exhibits

Committee

Mrs. S. Newbold van Trump, Jr.
Chair

Mrs. Norman S. Bemis

Mrs. Preston Carter

Mrs. Mercade A. Cramer, Jr.

Mrs. Elmer Hartwick

Mrs. Richard E. Heckert

Mrs. George A. Hewitt

Mrs. Milton Laden

Mrs. H. Vernon Lapp

Mrs. Edwin A. Peeples

Joanna McQuail Reed

Mrs. Victor J. Roberts

Mrs. Lyle R. Tanner 10

Esther J. Winters

July—August

Colonial Gardening in Delaware
Valley

September

Speaking of Seeds

October

Highlights from the Harvest Show

November

South Comes North

December

Christmas Show

"Living Traditions of the Yuletide,
II"

January

Oriental—Bonsai, Ikebana, Plant
Introductions

February—March

Horticultural Fibers Work for Man

April—May—June

Bicentennial Exhibit

"From Seed to Flower—1681—
1876"



Library

Committee

Barbara H. Emerson

Chair

Frederick W. Clark

George R. Clark

Bessie Greenawalt

George M. Harding

Marianna Merritt Horner

Mrs. H. Vernon Lapp

Richard W. Lighty

Lee Morris Raden

Adolph G. Rosengarten, Jr.

Mary Lou Wolfe

Elisabeth Woodburn

Dorothy S. Young

The PHS Library accessioned 476 new books into its collection this past year; 78 were gifts from members. About 300 books are circulated from the library each month and an equal number of books, journals and other reference materials are used in the library every month.

PHS continues to serve as the library for the American Rock Garden Society and circulated 600 books on rock gardening to ARGs members around the world. PHS has also joined with the American Bonsai Society in a similar agreement. In return for an agreed upon fee from ABS, members may borrow books on bonsai and related topics. Over 300 requests for bonsai material were received in the first six months of the agreement.

The library has continued its book restoration program and all the books in the PHS Bicentennial Exhibit, "From Seed to Flower", have been restored. The committee intends to restore the books in the Pennsylvania Special and Rare Book Collections.

Money contributed by "Friends" of the library helps support the restoration program. This year "Friends" gave nearly \$5,000 to the library. PHS has spent \$7,500 to date on book restoration. In addition to the restoration program, the library conducts a repair program to take care of books in the circulating collection that cannot be replaced easily. The library currently lists well over 13,000 titles making it the largest collection of horticultural literature in the Delaware Valley.

Gardens

Garden Volunteers:

Edward Doelp
Mrs. Robert B. Inverarity
Mrs. John S. Kaufman
Mrs. Barton Kroungold
Mrs. h. Vernon Lapp
Marjorie Maurer
Matthew McConnell
Mrs. Donald McPhail
Rear Adm. & Mrs. C. J. Van Arsdall
Frances Vollmer
Benjamin Wilson

The 18th Century Garden was planted in red, white and blue to honor the bicentennial celebration and to delight the expected visitors: red butterfly begonias, white wax begonias and blue and white ageratum, with plenty of dusty miller. The volunteers worked 900 hours throughout the reporting year to ready the 18th Century Garden, the PHS cutting and vegetable gardens and the Bishop White Garden at the corner of 3rd & Walnut Streets.

Because unusually heavy traffic was expected, and because the garden is now in its second decade, it was necessary to perform some major maintenance. A newly sodded lawn, new pebble paths and major pruning and plant material replacement were completed in time for the bicentennial.

Publications

Committee

Craig S. Oliver
Chair
George Borowsky
George M. Harding
Nancy Howard
Robert S. Ryan
J. Franklin Styer
Dorothy S. Young

PHS's bimonthly magazine, *Green Scene*, passed the 7,000 circulation mark after adding subscriptions for the entire membership of Skylands Association (Ringwood, N.J.) and Reeves Reed Arboretum (Summit, N.J.). *Green Scene* now goes to the membership of four horticultural organizations as well as to PHS membership.

At its May meeting the publications committee approved a budget for color photos throughout the magazine.

The Society's newsletter is published 11 times a year. It lists in complete detail the Society's activities throughout the year as well as other Society news, and when space permits information about other horticultural activities in the area.



awards

1975 Distinguished Achievement Medal

Owen B. Schmidt

1975 Certificate of Merit

Advisory Board of Managers of the
Morris Arboretum

Certificate of Merit

Mrs. L. Davis Jones

Certificate of Merit

John C. Swartley

Plant Society Award

Dorothy S. Young

1975 Landscape Horticulture

Awards of The Greater Philadelphia Chamber of Commerce in cooperation with the Pennsylvania Horticultural Society

Peddler's Village

McDonalds Restaurant

Medford Leas

Philadelphia Contributionship

1976 Gardens of Olney

The Pennsylvania Horticultural Society Awards Committee cooperated with the Delaware Valley Landscape Design Critics to judge and present 31 awards to the 1976 Gardens of Olney.

1976 Junior Horticulturist

Cynde Schwartz

The 1976 PHS Horticultural Sweepstakes Trophy

for the accumulation of the greatest number of blue ribbons in the Horticultural Classes of the Philadelphia Flower & Garden Show and the Harvest Show to:

Mrs. Sidney Keith

Exhibitors and Awards luncheon combined for the first time. The screens were for a multi-media show featuring participants in past Shows.





awards continued

Pennsylvania Horticultural Society Special Award for 1975 People Paper Gardens

Web Chrisman, West Philadelphia
Arthur J. Skill, Kensington
Senior Willing Workers, North
Philadelphia

Major Flower Show Awards 1976 Philadelphia Flower & Garden Show

**The Pennsylvania Horticultural
Society Flower Show Award** for the
best in show in the following
categories:

Educational Exhibit

W. Atlee Burpee Company

Floral Exhibit

Waldor Orchids

Landscape Exhibit

Vick's Wildgardens, Inc.

Special Exhibit

Pennsylvania Bonsai Society

The Pennsylvania Horticultural Society Awards of Merit to:

County Line Landscape Nursery

Delaware Orchid Society

Delaware Valley Chapter, American
Rock Garden Society

Delaware Valley College of Science
and Agriculture

Fairmount Park

Friends Hospital

Florists Transworld Delivery
Association

Gale Nurseries

Judd's Hollylan Nurseries

Meadowbrook Farm

Mercer County Community College

Morris Arboretum

Philadelphia & Valley Forge
Chapters, American Rhododendron
Society

Philadelphia Area Daffodil Society
Philadelphia Cactus & Succulent
Society

Philadelphia Chapter, Indoor Light
Gardening Society of America

Philadelphia Zoological Garden

George Robertson & Sons, Inc.

Rosade Bonsai Studio

Roses, Inc.

Southeastern Pennsylvania Orchid
Society

J. Franklin Styer Nurseries, Inc.

Temple University, Ambler Campus

Walter Biddle Saul High School

Whitemarsh Landscapes, Inc.

The Pennsylvania Horticultural Society Horticultural Sweepstakes Trophy

for the accumulation of
the greatest number of points in
the Horticultural Classes

Mrs. John G. Williams

The Pennsylvania Horticultural Society Room Award

for the outstanding Blue Ribbon
winner in the Room Classes to

Seed and Weed Garden Club

The Pennsylvania Horticultural Society Table Award

for the outstanding Blue Ribbon
winner in the Table Classes

Villanova Garden Club

The Pennsylvania Horticultural Society Flower Arranging Sweepstakes Trophy

to the individual accumulating the
greatest number of points in the
Arrangement Classes Section

Mrs. Harry C. Groome, Jr.

The Pennsylvania Horticultural Society Club Sweepstakes Award

for the accumulation of the greatest
number of points in the Arrangement
Classes Section

Four Counties Garden Club

1975 Harvest Show

The Flower Show Award of the Pennsylvania Horticultural Society—Arboretum of the Barnes Foundation
PHS Club Sweepstakes Trophy—

Trevoze Horticultural Society
PHS Gardeners Sweepstakes Trophy
—Louis S. Heins

PHS Arrangement Sweepstakes
Trophy—Mrs. James Weir

PHS Trophies to Outstanding
Exhibits—

Men's Garden Club of Delaware
Valley

Bromeliophiles of Greater
Philadelphia

Philadelphia Cactus and
Succulent Society

Meadowbrook Farm

Loren Young Johnson Family

W. Atlee Burpee Company

National Council Award of
Horticultural Excellence—
Mrs. John S. Magill

National Council Awards of
Horticultural Merit—

Mrs. John S. Magill

W. H. Dyre

Erich F. Meitzner

Presented at Other Flower Shows

The Flower Show Medal of the Pennsylvania Horticultural Society to the exhibit that best stimulates the use of flowering plants in or around the home presented to

Longfellow Elementary School of
Chicago at Chicago Flower &
Garden Show

The Women's Exhibition
Committee of the Massachusetts
Horticultural Society for
"400 years of American
Gardens" created by eight
Massachusetts Garden Clubs

Pennsylvania Horticultural Society Gold Medal Certificate to American Daffodil Society Convention Show for the best collection of five blooms registered after January 1, 1970.

Awards to PHS

The American Association of Botanical Gardens and Arboreta Award of Merit to PHS in recognition of "its many bicentennial projects for the public good through horticulture."



phs bicentennial projects

One of the original goals of the founders of the Pennsylvania Horticultural Society 149 years ago was to interest people in plants and gardening, "to inspire a taste for one of the most rational and pleasing amusements of man; and to facilitate the means of cultivating that taste." Each of the bicentennial projects was planned with that goal in mind: education, conservation, and recreation. The results will reach into the next century (10,000 Trees), across the nation (the film and national plant society meetings), into the academies and institutions (symposiums) and to the dedicated gardener as well as the tourist with the potential for caring (exhibit). Many members of the Society were involved in the planning and execution of these projects over the last several years.

From Seed to Flower: Philadelphia 1681-1876 A Horticultural Point of View

The exhibit, assembled and staged by the exhibits and library committees, documents Philadelphia's horticultural greatness, chronicled in the late eighteenth and early nineteenth centuries. Thirty-eight major books written, published and used by Philadelphians during that era were assembled, and a major catalogue, the first of its kind, brought together in one place the story of the growth of horticulture in Philadelphia. A handsome staging by the Society's exhibits committee displayed the color plates, title pages or other sections of the books as well as artifacts, charts, models, maps, plants and other memorabilia.

The exhibit and the catalogue were a three year project of the two committees and PHS staff. Consultants for the project were Professor Joseph Ewan, foremost botanical historian in America, and Emily Read Cheston, emeritus member of the library committee, widely respected for her horticultural knowledge and wisdom.

Many of Philadelphia's cultural and historic organizations worked with the Society to prepare the exhibit: The American Philosophical Society, the Library Company of Philadelphia, The Free Library of Philadelphia, the John Bartram Society and Wyck.

The exhibit will be open seven days a week and special guides have been hired to explain the exhibits to visitors. We believe the large number of tourists that have already stopped by took away a profound appreciation of Philadelphia's role in the international horticultural network.

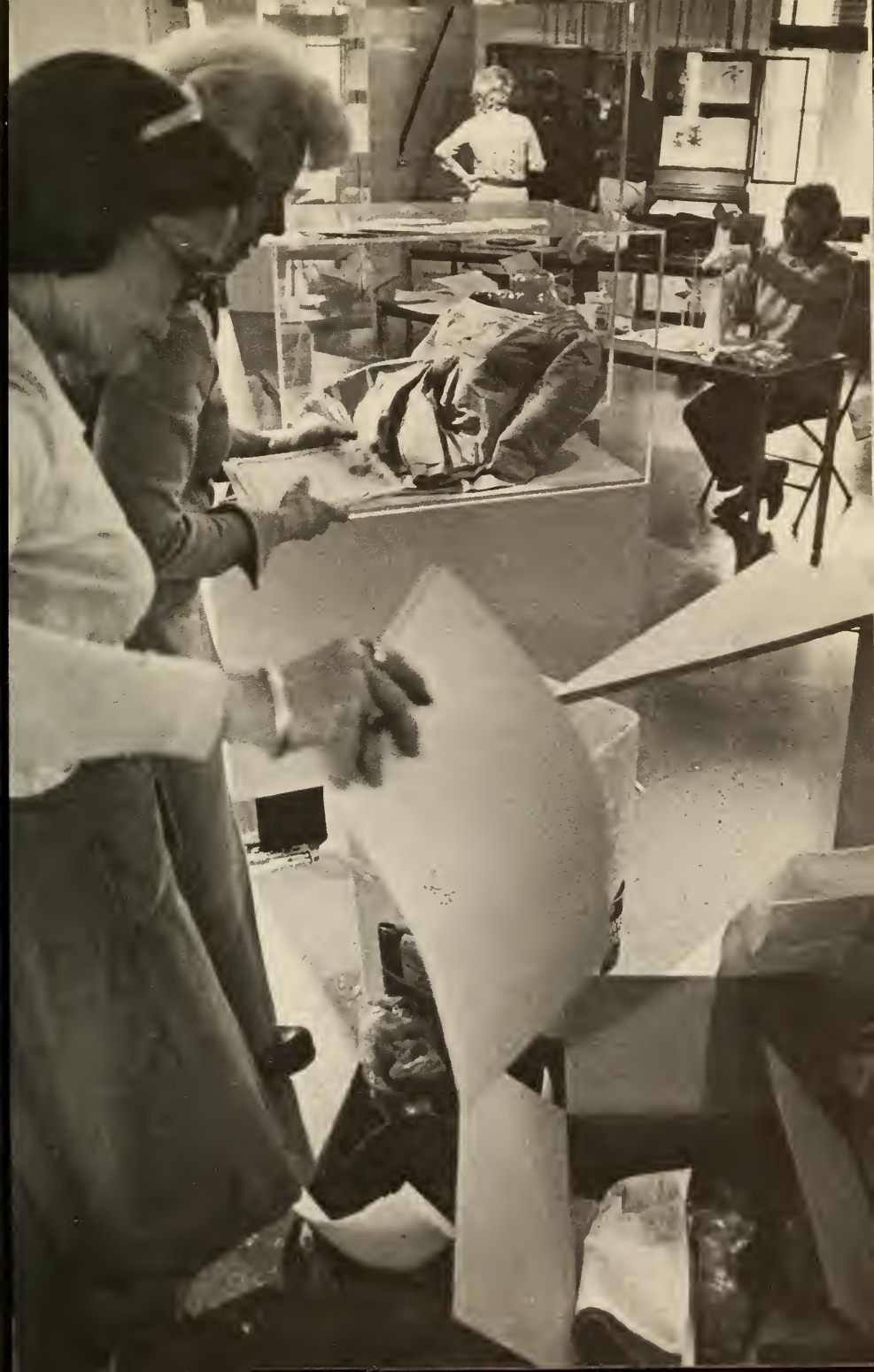
10,000 Trees

Committee

C. Stuart Brown
Chair
Mrs. John W. Appel
Mrs. Raul Betancourt, Jr.
Frederic W. Clark
Nancy Clark
Lawrence Formica
Mrs. Eugene G. Grace
Mrs. Adolphus Lewis, Sr.
Mrs. David Linforth
John J. Morley
Mrs. Henry Disston
Henry H. Reichner, Jr.
Mrs. Richard T. Saler
Mrs. Walter Smedley
Bradshaw Snipes
Kurt A. Solmssen

continued

The exhibits committee at work before the opening.



phs bicentennial projects continued

John E. Strong
Mrs. Morris W. Stroud, 3rd

By the end of the program's third year, 8,000 trees were planted in 31 parks.

Three brochures have been prepared and printed, the two most recent ones including the names of major donors and memorial groves. The names of people who contributed \$10 or more are recorded in a record book. Major donors' names are on a permanent plaque in Memorial Hall.

Plant Society Meetings

In 1973, PHS issued invitations to many national plant and garden societies to hold their annual meetings in our city during the bicentennial year. Eleven accepted and PHS co-sponsored their meetings and entertained them in the Society's headquarters. Societies convening in Philadelphia during the period covered by this report were:

- American Association of Botanical Gardens and Arboreta
- American Orchid Society
- American Daffodil Society
- Council on Botanical and Horticultural Libraries

In anticipation of additional national meetings in which the Society will render service and provide entertainment, staff and committees spent time arranging for meetings of the following groups:

- American Bonsai Society
- American Horticultural Society
- Holly Society of America
- Indoor Light Gardening Society of America
- Men's Garden Club of America
- National Council for Therapy & Rehabilitation through Horticulture
- North American Lily Society

1976 Symposiums

America's Garden Legacy: A Taste for Pleasure

Committee

Richard W. Lighty
Chair

Elizabeth Chew Bennett
Julia F. Davis
Barbara H. Emerson
Mrs. H. Rowland Timms
L. Wilbur Zimmerman

A series of seven lectures have been designed to give a broad history of amenity horticulture in the United States, and particularly in the Philadelphia area.

The committee completed the planning of the series and enjoyed the first three before the end of this reporting period:

I The Philadelphia Heritage: Plants and People

Charles Hess speaking at Bartram's Gardens.



Winterthur Gardens, Winterthur,
Delaware

Speaker: Joseph Ewan, Professor
of Botany, Tulane University

- II Sharing the Wealth: American
Plants in the English Landscape
The Arthur Hoyt Scott Horticultural
Foundation, Swarthmore
College, Swarthmore, Pa.

Speaker: Diane Kostial McGuire,
landscape architect, founder of
the Radcliffe Seminars in
Landscape and Environmental
Design, landscape architect
to Harvard University and
Wellesley College.

- III Science Enters the Garden
Bartram's Gardens, Philadelphia,
Pa.

Speaker: Charles Hess, Dean of
the College of Agriculture &
Environmental Sciences at the
University of California in Davis.

The titles and location of the
balance of the series are as follows:

A Matter of Taste; Garden Arts &
Vogues—Fairmount Park,
Philadelphia

The Houses and Tools of
Horticulture—Chanticleer,
Wayne, Pa.

The Organizations of Horticulture
—Independence National
Historical Park

The Gardens They Made—Morris
Arboretum, Chestnut Hill, Pa.

PHS Film

Our bicentennial film, "How Long
is Always—A Story of Trees" won the
American Horticultural Society Award
of Excellence. We showed the film
twice a day through June and planned
to do so throughout the rest of the
summer. Two prints were given to
the School District of Philadelphia
Audio Visual Education and one to
the Superintendent of Schools, the
Archdiocese of Philadelphia.





Decisions about suppliers, costs, decor, menus, seating and the logistics of the Preview Dinner are made by the hardworking committee throughout the year.

Major Contributors

Throughout the year people are generous to PHS; they give time, books, plants and other things of material value.

Because we are limited by space, we cannot acknowledge each gift; we have listed here contributions in excess of \$100.

The Arcadia Foundation
Mr. & Mrs. Lloyd Balderston
Mr. & Mrs. William Balderston
Ernesta D. Ballard
Mrs. Victor R. Bieber
Mrs. Elizabeth Billingslea
Edward Breuniger
Linda C. Corson
Mr. & Mrs. James Eiseman

Mrs. Herman W. Fischer
Mr. & Mrs. W. F. Fischer, Jr.
Mr. & Mrs. Edward L. Forstall
Mr. & Mrs. Herbert P. Haley
Mr. & Mrs. Richard Heilman
Mr. & Mrs. Barton H. Hunter
Mr. & Mrs. Charles L. Johnson
Dr. & Mrs. Edward L. Lame
Mr. & Mrs. John H. Lippincott
Mrs. Arthur Littleton
Katharine Matthews
Anna McCormack
Bee McCormack
Mrs. John McK. Mitchell
Mr. & Mrs. Elliston P. Morris
Mrs. W. A. Pendleton
Friends of the Powel House
Quaker Chemical Foundation
Mrs. Arthur S. Roberts

membership

Mrs. Wharton Sinkler
Mrs. J. R. Speed
Mrs. George O. Spencer
Mrs. Lewis M. Stevens
Mr. & Mrs. Raymond A. Townley
The Warwick Foundation
Mr. & Mrs. Harold Wetherbee
Mrs. E. A. Whiting
Mrs. John G. Williams
Eleanor M. Winter
Mr. & Mrs. John Wood, 2nd

Bequests

Betty H. Bancroft

1976 Flower & Garden Show Preview Dinner, March 6

The 1,850 members and guests who attended the Preview of the 1976 Philadelphia Flower & Garden Show and the dinner that followed, contributed substantially to the support of important horticultural projects including community gardens, the use of the Gardenmobile and training Philadelphia school system teachers.

Mrs. James F. Bodine
Chair
Mrs. Edward E. Cullen, 3rd
Co-Chair
Elizabeth C. Bennett
Mrs. John K. Binswanger
Mrs. John A. Brown
Morris R. Brownell, Jr.
Mrs. Morris R. Brownell, Jr.
William C. Burleigh
George R. Clark
Mrs. George R. Clark

Mrs. Franklin d'Olier, Jr.
Mrs. George W. Edwards, Jr.
Mrs. Thomas H. Ginley
Thorp Van D. Goodfellow
Mrs. Thorp Van D. Goodfellow
Mrs. Eugene G. Grace
Mrs. Bruce H. Greenfield
Quita W. Horan
Mrs. Horace C. Jones
Mrs. Henry B. King
Daniel M. Layman
Mrs. Nelson J. Leidner
Mrs. Charles H. Norris, Jr.
Mrs. Andrew W. Porter, Jr.
Mrs. Alfred W. Putnam
Mrs. Paul Rosenbaum
Mrs. Geoffrey Stengel
Mrs. Leon C. Sunstein, Jr.
Mrs. John Hoover Thacher
Mrs. George R. Wallis
Mrs. W. Cooper Willits

Membership

Membership June, 1975—5531
Membership June, 1976—5804

The names and address of all current members are on file at PHS headquarters. Of the total members, 166 were contributing, 76 sustaining, 1,581 family, 571 life and 82 student members; the remainder are annual members.

New Life Members

J. Barrington Bates
James E. Bates
Mrs. James E. Bates
Willa Laurens Bates



financial report of the pennsylvania horticultural

Treasurer's comments:

In presenting the financial statements for 1976 (and comparative statements for 1975), I would like to point out one item of great significance for the Society and its members. That is the increase in the amount transferred to Special Projects and the 150th Anniversary Fund (\$125,000 in 1976 against \$25,000 in 1975) and the growth in the total set aside for those purposes as a liability on the balance sheet (\$320,000 in 1976 against \$195,000 in 1975).

These entries reflect a decision by the Council to use the money for special projects rather than add it to endowment. Because of this decision, the Society can plan, undertake and fund programs extending over several years with the assurance that money will be available to meet commitments regardless of the inevitable ups and downs in year-to-year revenues and expenses.

Respectfully
Alan Crawford, Jr.
Treasurer

Report on Examinations Years Ended June 30, 1976 and 1975

The Council of The Pennsylvania Horticultural Society
Philadelphia, Pennsylvania

We have examined the balance sheet of The Pennsylvania Horticultural Society at June 30, 1976 and 1975, and the related statements of Principal and Operating Fund revenue and expenses for the years then ended. Our examination was made in accordance with generally accepted auditing standards and, accordingly, included such tests of the accounting records and such other auditing procedures as we considered necessary in the circumstances.

The financial statements are prepared on a modified cash basis, in that items of revenue and expenses (except for depreciation) are recorded as received and paid. Preparation of the financial statements on the accrual basis would require that a deferred credit of approximately \$45,000 and \$42,000 for June 30, 1976 and 1975, respectively, for membership dues paid in advance be shown on the balance sheet.

In our opinion, such financial statements present fairly the financial position of The Pennsylvania Horticultural Society at June 30, 1976 and 1975 and the Operating Fund revenue and expenses and changes in Principal for the years then ended, on the basis indicated in the preceding paragraph, applied on a consistent basis.

Main Lafrentz & Co.
Certified Public Accountants
Philadelphia, Pennsylvania
August 2, 1976

society

Balance Sheet June 30, 1976 and 1975

Assets	1976				1975*
	Operating Fund	Endowment Funds			Total
		Unrestricted	Restricted	Total	
Cash (savings accounts 1976 \$227,035 and 1975 \$126,131)	\$236,002	\$ 71	\$5,354	\$241,427	\$161,497
Marketable securities (market value 1976 \$617,304 and 1975 \$570,036)	84,896	504,085		588,981	585,148
Furniture, equipment and improvements	110,920			110,920	106,443
Accumulated depreciation and amortization	81,991			81,991	76,851
	28,929			28,929	29,592
Books and portraits	26,909			26,909	26,909
	<u>\$376,736</u>	<u>\$504,156</u>	<u>\$5,354</u>	<u>\$886,246</u>	<u>\$803,146</u>

Liabilities

Sales tax payable	\$ 64			\$ 64	\$ 11
Special Fund—"10,000 Trees"	18,623			18,623	49,288
Special Projects and 150th Anniversary Fund	320,000			320,000	195,000
Principal balance	38,049	\$504,156	\$5,354	547,559	558,847
	<u>\$376,736</u>	<u>\$504,156</u>	<u>\$5,354</u>	<u>\$886,246</u>	<u>\$803,146</u>

*Restated to eliminate Pension Fund, see related note.

The accompanying notes are an integral part of these financial statements.

Statement of Principal for the Years Ended June 30, 1976 and 1975

	1976				1975
	Operating Fund	Endowment Funds			Total
		Unrestricted	Restricted	Total	
Balance, beginning of year	\$ 76,925	\$476,568	\$5,354	\$558,847	\$599,346
Excess of Operating Fund revenue over expenses	86,124			86,124	2,025
Transfer to Special Projects and 150th Anniversary Fund	(125,000)			(125,000)	(25,000)
Unrestricted contributions		41,163		41,163	16,575
Loss on sale of investments		(15,675)		(15,675)	(36,399)
Life membership dues		2,100		2,100	2,300
Balance, end of year	<u>\$ 38,049</u>	<u>\$504,156</u>	<u>\$5,354</u>	<u>\$547,559</u>	<u>\$558,847</u>

The accompanying notes are an integral part of these financial statements.

continued

Statement of Operating Fund Revenue and Expenses for the Years Ended June 30, 1976 and 1975

	1976	1975*
Revenue		
Membership dues	\$ 89,914	\$ 83,661
Invested funds and savings accounts	32,822	33,995
Schafer Trust	14,086	16,237
Designated contributions	29,734	15,820
Flower and Garden Show	693,067	533,621
Preview Dinner	119,390	94,777
Fees and sales	30,188	35,990
Membership and other activities	24,935	10,967
	<u>1,034,136</u>	<u>825,068</u>
Expenses		
Salaries	210,324	193,184
Other employee expenses	53,137	65,200
Building maintenance and utilities	20,571	17,398
Depreciation and amortization	5,140	7,182
Administrative supplies and expense	42,766	36,230
	<u>331,938</u>	<u>319,194</u>
Less allocation of overhead to Flower and Garden Show	<u>114,075</u>	<u>99,232</u>
	217,863	219,962
Publications	57,201	57,466
Flower and Garden Show, including allocation of overhead	459,795	390,738
Preview Dinner	40,344	35,721
Library and educational programs	15,493	10,472
Membership and other activities	56,963	35,006
Bicentennial projects	71,769	70,191
Community service projects	28,584	3,487
	<u>948,012</u>	<u>823,043</u>
Excess of revenue over expenses	<u>\$ 86,124</u>	<u>\$ 2,025</u>

*Restated to conform to current presentation.

The accompanying notes are an integral part of these financial statements.

The Pennsylvania Horticultural Society Notes to Financial Statements

Significant Accounting Policies

The financial statements are prepared on a modified cash basis. Marketable securities, furniture, equipment and improvements are carried at cost. Rare books and portraits are carried at 1971 ledger values, and subsequent additions to books and portraits have been charged to expense.

Depreciation of furniture and equipment is computed on the straight-line method over the estimated useful lives which range

from five to ten years. Improvements to buildings are amortized over the term of the building occupancy agreement.

Life membership dues and unrestricted contributions are added to the Unrestricted Endowment Fund, which is a Board-designated fund without restriction on principal or income.

Investments

Operating Fund assets include securities segregated to provide a funding of the Special Projects and 150th Anniversary Fund.

In addition, the Society is the income beneficiary of a trust, under

deed of Elizabeth Schaffer, comprised of securities with a market value of \$311,487 and \$300,466 at June 30, 1976 and 1975, respectively.

Special Fund—"10,000 Trees"

Contributions to the Special Fund—"10,000 Trees", an ongoing campaign to raise funds for the planting of trees in Philadelphia parks, administered by the Society, amounted to \$75,008 and \$83,134 in the years ended June 30, 1976 and 1975, respectively. The sum of \$107,234 was expended for tree planting in 1976 and \$60,440 in 1975. The balance of the Fund, \$18,623 and \$49,288, at June 30, 1976 and 1975, respectively, was deposited in a savings account, the interest on which was added to the Fund.

Pension Plan

The Society has a non-contributory pension plan covering substantially all full-time employees. The Plan has been amended to conform to the Employee Retirement Income Security Act of 1974.

In July 1975, the assets of the Fund, formerly included on the Society's balance sheet, were transferred to a trustee account with a bank. So that the June 30, 1975 balance sheet may be comparable to that at June 30, 1976, the 1975 figures have been restated to eliminate the Pension Fund, which at that date amounted to \$62,950.

Pension expense under the Plan was \$20,000 in 1976 and \$39,750 in 1975. Contributions to the Fund in future years must meet required funding standards. Pending an actuarial study, the amounts of such contributions cannot be determined.

Building Agreement

The Society occupies facilities in Independence National Historical Park. The provisions of the agreement

with the Department of Interior require that the Society assume responsibility for the routine operation, maintenance, and minor repairs to the interior of the building, the garden area and all related machinery and equipment. The Society is required to deposit \$100 per month in a fund for major repairs and replacements to buildings, equipment and grounds. The agreement terminates in 1983 and is renewable at the option of the Federal Government.

Special Projects and 150th Anniversary Fund

During June of 1976, the Executive Council of the Society changed the name of the "Planned Public Projects and Losses Reserve Fund" to the "Special Projects and 150th Anniversary Fund." The amount of \$100,000 has been authorized to be spent on horticultural advancement in honor of the Society's 150th anniversary. Expenditures, which will not take place until the 1976-1977 fiscal year, will be charged against the Special Projects and 150th Anniversary Fund.

Agreement with the Neighborhood Garden Association

For one year, starting March 1, 1976, the Neighborhood Garden Association (Association) pays the Society \$2,000 on a quarterly basis in consideration for assuming the responsibilities for execution of the "Garden Block Program." This program includes the training of personnel, maintaining relationships with block residents, visits, and maintaining accurate records. The Society assumes all costs and expenses in the implementation of the program. In addition, for the term of the contract, two members of the Association's Board are voting members of the Society's Community Activities Committee, and two members of the Society's Council serve as voting members of the Association's Board.



other activities

Miscellany

From July 75 to June 76 43,000 people visited Society headquarters; half that number came between April and June after the opening of the Bicentennial celebration. PHS is fortunate to be in the midst of Independence National Historical Park, which drew a large number of tourists in the spring of 1976.

In addition to the free plant clinics, our horticultural staff continued to answer hundreds of phone and letter inquiries about horticultural problems.

Organizations Meeting at PHS Once or More During the Year

American Association of Botanical Gardens and Arboreta
American Hemerocallis Society
American Institute of Architects
Bromeliophiles of Greater Philadelphia
City Department of Recreation, Neighborhood Park Program
Council on Botanical and Horticultural Libraries
Delaware Valley Fern Society
Earth Congress
Evergreens Garden Club
Greater Philadelphia Cultural Alliance
Liberty Bell Chapter, American Gloxinia and Gesneriad Society

The Flower & Garden Show exhibitors gather for an evening meeting of fun and ideas at the home of William MacDowell, who chaired the Show.



Middle Atlantic Regional Lily Group,
North American Lily Society
National Council on Therapy and
Rehabilitation through
Horticulture, Annual Meeting
Committee

Neighborhood Garden Association
Northwestern Region, American
Orchid Society

Cooperative Extension Service,
Pennsylvania State University

Pennsylvania Bonsai Society

Philadelphia Chapter, American
Rhododendron Society

Philadelphia Chapter, American
Rose Society

Philadelphia Chapter, Indoor Light
Gardening Society

Philadelphia Committee, Garden
Club of America

Philadelphia Convention and
Visitors Bureau—Guides
Orientation

Society of American Archivists
Toronto Civic Garden Center

Staff members Attended or Participated in Meetings of the Following Organizations

Advisory Committee—Horticultural
curriculum for Abraham Lincoln
High School

American Association of Botanical
Gardens and Arboreta

American Bonsai Society

American Horticultural Society

*John Bartram Association

Conservation Fair, Wissahickon
Valley Watershed Association



other activities continued

Delaware Valley Chapter, American
Rock Garden Society
Delaware Valley Regional Planning
Commission, Year 2000
Committees
*Earth Congress
4-H Development Council
Friends of Rittenhouse Square
*Garden Writers Association of
America
Gardens of Greater Olney
Governor's Anti-inflation Annual
Dinner
*Greater Philadelphia Cultural
Alliance
International Plant Propagator's
Society
International Shade Tree Symposium
Kingscott Associates, Inc.
*National Association of Public
Exposition Managers
*National Council for Therapy and
Rehabilitation Through
Horticulture
*Neighborhood Garden Association
North American Lily Society,
Convention Committee
Pennsylvania Bonsai Society
Pennsylvania Environmental Council
Pennsylvania Nurserymen's
Association, Inc., Eastern Region
Philadelphia Chapter, American
Rhododendron Society
Philadelphia Chapter, Indoor Light
Gardening Society of America
*Philadelphia County Extension
Service, Executive Committee
Philadelphia Public Relations
Association
Society of Professional Journalists,
Sigma Delta Chi
*Women in Communications, Inc.

*Served on Governing Body.

PHS Staff

Charlotte L. Archer
Members Activities Coordinator
Suzanne M. Block
Secretary
J. Blaine Bonham, Jr.
Community Gardening Programs
Director
Jean Byrne
Editor
Grace M. Cole
Membership Secretary
Denise Durinzi
Secretary
Patricia M. Durinzi
Administrative Assistant
William F. Herbert
Bookkeeper
F. Evelyn Hett
Flower Show Secretary
Benjamin Johnson
Custodian
Carol V. Lindemann
Secretary
Edward L. Lindemann
Horticulturist
Valerie S. Martin
Community Activities Field
Representative
James P. McCarvill
Flower & Garden Show Manager
Julia L. Morris
Horticultural Librarian
Marie Rodia
Receptionist
Carol Sclafani
Field Horticulturist
Jane Talarico
Library Assistant
Theodora Welgoss
Bicentennial Projects
Director
Honora Wesley-Burke
Book Restorer
Mary Williams
Housekeeper





