

SB 21  
.P343  
1974-76

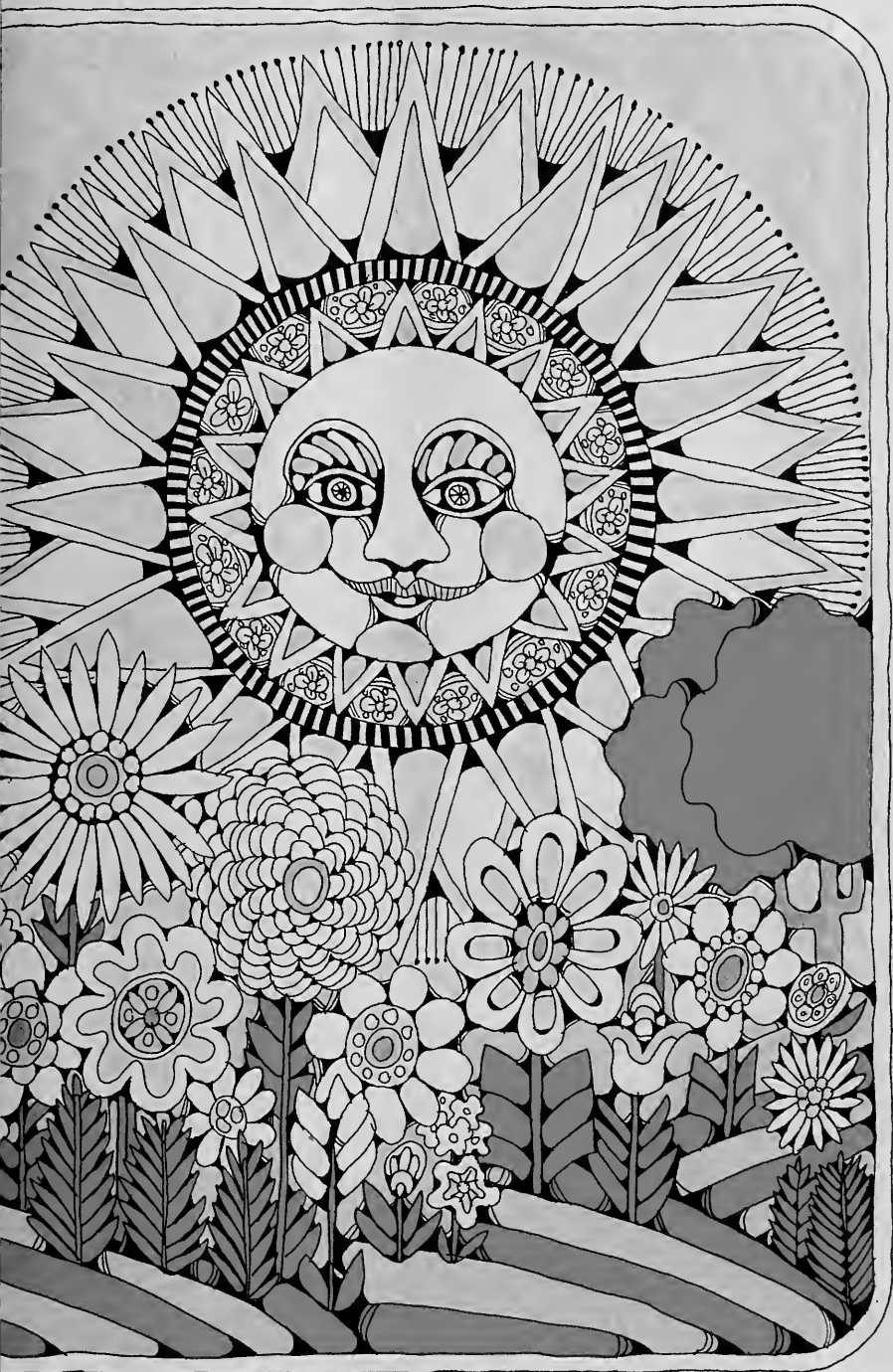
Digitized by the Internet Archive  
in 2011 with funding from  
LYRASIS Members and Sloan Foundation



EX LIBRIS  
THE PENNSYLVANIA  
HORTICULTURAL SOCIETY

SE . .  
.P 3 43  
1974. 76

14576



# YEARBOOK

July 1, 1973 — June 30, 1974



THE PENNSYLVANIA HORTICULTURAL SOCIETY  
INDEPENDENCE NATIONAL HISTORICAL PARK  
325 WALNUT STREET  
PHILADELPHIA, PENNSYLVANIA 19106  
WALnut 2-4801

## EXECUTIVE COUNCIL

Herbert W. Goodall, Jr.  
*Chairman*

Ernesta D. Ballard,  
*President*

L. Wilbur Zimmerman,  
*Vice Chairman*

Robert S. Ryan,  
*Vice-Chairman*

Alan Crawford, Jr.  
*Treasurer*

James P. McCarvill,  
*Secretary*

William C. Burleigh  
Frederic W. Clark  
George R. Clark  
John D. Corbit, Jr.\*  
William L. Day\*  
Barbara H. Emerson  
Mrs. Eugene G. Grace  
Mrs. Walter K. Howard  
John S. Kistler  
Mrs. Adolphus Lewis, Sr.  
Richard W. Lighty  
Mrs. John D. Lohmeyer  
William D. MacDowell  
Henry D. Mirick  
Robert E. Montgomery

Craig S. Oliver  
J. Liddon Pennock, Jr.  
Mrs. Alfred W. Putnam  
Lee M. Raden  
Paul Rosenbaum\*  
Adolph G. Rosengarten, Jr.  
John E. Strong  
Mrs. Morris W. Stroud, 3rd  
J. Franklin Styer  
Mrs. S. Newbold van Trump  
Mrs. E. Perot Walker  
Mrs. John G. Williams  
Mrs. Esther J. Winters  
Minturn T. Wright, 3rd

\*deceased

The Chairman and the President are *ex officio* members of all committees.

## EXECUTIVE COMMITTEE

Herbert W. Goodall, Jr.  
*Chairman*

George R. Clark  
Alan Crawford, Jr.  
Lee M. Raden  
Paul Rosenbaum  
Robert S. Ryan  
Mrs. John G. Williams  
L. Wilbur Zimmerman

## NOMINATING COMMITTEE

William C. Burleigh,  
*Chairman*  
Alan Crawford, Jr.  
Mrs. John D. Lohmeyer  
J. Liddon Pennock, Jr.  
Lee M. Raden  
L. Wilbur Zimmerman

## INVESTMENT COMMITTEE

Alan Crawford, Jr.  
*Chairman*  
William C. Burleigh  
George R. Clark  
Minturn T. Wright, 3rd

## **FROM THE CHAIRMAN**

As you read the pages that follow, you will see that this has been an eventful year for the Pennsylvania Horticultural Society, one of the most eventful in the Society's 147-year history.

It has been a year of growth, of change, of challenges, and yes, of disappointment.

Growth is reflected in the increased number of activities offered to members this past year; in the record breaking number of visitors to the flower show; in the increased number of visitors, both members and nonmembers, to our headquarters; in the heavy volume of telephone calls, which sometimes overwhelm our switchboard even though it has been enlarged, and by the continuing gains in our membership.

Conversely, three valuable members of the Executive Council died

this year: John D. Corbit, Jr., William L. Day, and Paul Rosenbaum. Mr. Day and Mr. Rosenbaum had been deeply involved in planning for the bicentennial and their contributions were significant. Dr. Corbit, a knowledgeable and dedicated plantsman, served on several committees.

The change is in our administrative structure. The Society by-laws were altered adding two new positions, namely Chairman and Vice-Chairman of Council, and removing a limitation on the term of President. Ernesta Ballard, who has served as our chief administrative officer for 10 years, was elected in October 1973, becoming the Society's first salaried President.

The challenges arose primarily from two sources. One, as indicated above, was the very healthy upward trend in the demand for our established horticultural services and the use of our facilities. And in this connection, I should mention how pleased we were that this year our President was awarded the Thomas Roland Medal by the Massachusetts Horticultural Society for exceptional skill in horticulture.

The second source of challenge had to do with our heavy involvement in a number of projects related to the nation's bicentennial, now less than a

year and a half away. And it was in this area that we encountered our major disappointment.

I am speaking of the untimely demise of Philaflora. Despite the unfortunate outcome of all the work put into the project by the PHS staff and many volunteer members, it is my firm belief that their efforts have enhanced the reputation of the Society in many quarters where we were little known in the past.

The Pennsylvania Horticultural Society is probably the largest and strongest regional horticultural society in the country. You will find details of our ongoing bicentennial projects and our regular activities elsewhere in this report. Therefore, I shall touch here on but one aspect of these diverse activities, one that is common to all and is the society's major strength.

It is the dedicated, knowledgeable and effective work of the PHS staff and of the hundreds of members who, on a volunteer basis, serve well the horticultural interests of the Delaware Valley. On behalf of the Executive Council, I thank them for their unselfish support of the Society.

Herbert W. Goodall, Jr.  
*Chairman*





ERNESTA D. BALLARD  
*President*

## **FROM THE PRESIDENT**

This year marks the completion of a decade in our headquarters building in the Independence National Historical Park. Members will recall that we occupy the headquarters rent-free in return for maintenance of the adjacent 18th Century Garden, the greenhouse, the small backyard and the building itself. As an additional consideration to the Park, the Society stages educational exhibits and shows in the ground floor exhibit space.

During the course of the year, upon recommendation of the Long Range Planning Committee, significant alterations were made on the second floor of the building, expanding the library shelving by more than 200 feet and permitting more efficient use of the rest of the space.

We are most grateful to our co-tenants, the Philadelphia Society for Promoting Agriculture, for granting us the use of their room on the third floor. This additional space, together with the alterations referred to above, has enabled us to accommodate the enlarged staff required for our expanded programs.

In June 1973, Philadelphia '76, the City's official bicentennial planning agency, asked PHS to prepare a feasibility report for an outdoor flower show modeled on those held in various European cities. The resulting report was completed in September 1973 and outlined a proposal for a five-month "horticultural entertainment" to be known as Philaflora, to be budgeted at about \$11,000,000 and to be staged on a 58-acre site in Fairmount Park, adjacent to the City's planned Plant and Garden Center and to Memorial Hall. The proposal contemplated that PHS would plan and operate Philaflora.

The proposal was accepted by Philadelphia '76 and, subsequently, the Society devoted much time and effort to developing plans for the project. By January, Philaflora had come to be regarded as a major attraction for tourists in 1976. Believing that such an operation was outside its capabilities,

the Society withdrew as manager but continued as horticultural consultant. In June 1974, Philadelphia City Council voted not to fund Philaflora, thus bringing about its demise.

Despite disappointment in the final outcome, the Society can look back on Philaflora with pride and satisfaction. During the planning process, the staff and the members working on the project established new and valuable relationships with experts in many fields related to the Society's other programs. In addition, joint efforts to develop the project strengthened the basis of cooperation between the Society and the Fairmount Park Commission.

In all its other programs and activities, the Society has had a good year. The enormous attendance at the Philadelphia Flower & Garden Show improved our financial statement, but also brought us to the realization that important changes will have to be made to accommodate the crowd next year. I have included detailed information about these programs and activities in the report that follows.

Ernesta D. Ballard  
*President*



The PHS Executive Council



Free PHS plant clinic was held in the Azalea Garden in Fairmount Park as part of the Festival '74 sponsored by the Greater Philadelphia Cultural Alliance.

## **PROGRAM**

### **LONG RANGE PLANNING**

#### **Committee**

Robert S. Ryan,  
*Chairman*

George R. Clark

William L. Day

Henry D. Mirick

Phyllis G. Williams

Following an invitation from the City Managing Director, the committee gave serious consideration to his suggestion that the Society move its operation to the proposed Plant and Garden Center in Fairmount Park. Every aspect of the planned facility was investigated, and

an independent study of five comparable operations was performed. The clear consensus was that the Society should not give up its inexpensive headquarters in the Independence National Historical Park at this time. The Committee therefore recommended that the Society put aside any plans to move, and that it continue to devote its attention to improving the use of its present building through relatively simple alterations. The Council accepted the Committee's recommendations and the Society now expects to stay at 325 Walnut Street for the foreseeable future.

This completed the assignment of the Long Range Planning Committee, which has been dissolved.

## MEMBERS' ACTIVITIES

### Committee

Mrs. E. Perot Walker  
*Chairwoman*

William C. Burleigh  
*(1972-73 Chairman)*

John S. Kistler

Mrs. John D. Lohmeyer

Mrs. Morris W. Stroud, 3rd

Mrs. Walter K. Howard

The Society offered more activities during the 1973-74 period than during any other. In addition to the increased number of activities, experimental cooperative programs were worked out with Morris and Tyler Arboretums for the convenience of members in the suburbs. These programs were well attended and are now being evaluated to determine the extent of mutual benefit to staff and members of the participating institutions. (The activities listed below were planned in 1972-73.)

### Lectures, Lecture Demonstrations & Symposiums

#### September

Evelyn Hett

*Preparation for exhibiting in a show*  
(Joint meeting with the Philadelphia Chapter of the Rhododendron Society)

Bernice Makin

*Flower Arranging*  
(Series of four lectures given jointly with the Morris Arboretum)  
(Series of six lectures at PHS)

Dee Peck—Bernard Weiner

*Commercial and custom-made fluorescent light fixtures*  
(Joint meeting with the Philadelphia Chapter, Indoor Light Gardening Society)

Bernice Makin

*Flower Arranging*

#### October

Brian M. Lamb

*Cactus*

(Joint program with the Philadelphia Cactus and Succulent Society)

John A. Borneman, Jr.

*Potted Friends and Little Rose Show*

(Joint program with the Philadelphia Rose Society)

William S. Stewart

*Pacific Tropical Botanical Garden*

*Niche Symposium for 1974 Flower and Garden Show*

*Horticultural Classes Symposium for the 1974 Flower and Garden Show*

Ann Conroy

*Container Crafts*

(Joint program with the Philadelphia Chapter, Indoor Light Gardening Society)

John Yoshio Naka

*Bonsai Demonstration*

(Joint meeting with the Pennsylvania Bonsai Society)

#### November

*Garden Supplies Auction*

(Joint meeting with the Philadelphia Rose Society)

Mrs. Julian W. Hill

*Rhododendron nakahari*

(Joint meeting with the Philadelphia Chapter, American Rhododendron Society)

Ernesta D. Ballard

*Indoor Gardening*

Doris Froning—Ely Johnson

*Mame Bonsai*

(Joint meeting of the Pennsylvania Bonsai Society)

Jack Golding

*The Ultimate Light Garden*

(Joint meeting with the Philadelphia Chapter of the Indoor Light Gardening Society)

#### December

*Holiday Party for Juniors*

## January

- Lee Lester  
*Home Greenhouse*  
(Joint lecture with the Tyler Arboretum)  
(Series of three lectures jointly with the Morris Arboretum)
- Julia Finette Davis  
*Colonial Williamsburg*
- Leroy Svec  
*Physiology of Lilies*  
(Joint meeting with the Middle Atlantic Regional Lily Group)
- Panel Discussion  
*Horticultural Fundamentals*  
(Joint meeting with the Philadelphia Chapter, Indoor Light Gardening Society)
- Martha L. Garra  
*Planning the Herbaceous Border*  
(Two series of five lectures jointly with the Morris Arboretum)
- Charles W. Rogers, Jr.—John Griswold  
*A Day in the Tropics at the Philadelphia Zoo*

## February

- Edward L. Lindemann  
*Basic Garden Design*  
(Series of two lectures jointly with the Morris Arboretum)
- Ernesta D. Ballard  
*Indoor Gardening*
- Gordon Brandes  
*Stop the Headlong Plunge into Ugliness*  
(Joint meeting with the Philadelphia Chapter, American Rhododendron Society)
- Felton Jones  
*Preparing Bonsai for the Show*  
(Joint meeting with the Pennsylvania Bonsai society)
- Julie Morris  
*Terrariums*  
(Joint meeting with the Philadelphia Chapter, Indoor Light Gardening Society)

## March

- John A. Borneman, Jr.—Frank Wuest  
*Budding Roses*  
(Joint program with the Philadelphia Rose Society)
- Martha L. Garra  
*Gourmet Gardens*  
(Lecture jointly with the Tyler Arboretum)  
(Two lectures jointly with the Morris Arboretum)
- Lincoln Foster  
*Dwarf Rhododendrons*  
(Joint program with the Philadelphia Chapter of the American Rhododendron Society)
- Ernesta D. Ballard  
*Plants from Seed*  
(Two lectures jointly with the Morris Arboretum)
- W. Earle Hamilton  
*Trouble free plants for growing under lights*  
(Joint program with the Philadelphia Chapter of the Indoor Light Gardening Society)
- Edward L. Lindemann  
*City Gardening*

## April

- Ernesta D. Ballard—Julie Morris  
*House Plant Course*  
(Two series of three lectures)
- Julie Morris  
*Library Round Table*
- Stanley Johnson  
*Roses vs. Dahlias*  
(Joint program with the Philadelphia Rose Society)
- F. Chase Rosade  
*Introduction to Bonsai*  
(Series of three lectures jointly with the Morris Arboretum)
- Joanna Reed—Moderator  
*Herb Panel*
- Philip A. Livingston  
Mr. and Mrs. Kenneth Miller

*Costa Rica*

(Joint program with the Philadelphia Chapter, American Rhododendron Society)

Dorothy Young

*Saikei*

(Joint lecture with Tyler Arboretum)

Toy Sato

*The Art of Viewing Stones*

(Joint meeting with the Pennsylvania Bonsai Society)

Patrick Nutt

*The Wide World of Gesneriads*

(Joint meeting with the Philadelphia Chapter, Indoor Light Gardening Society)

May

Frank Wuest

*Preparing Roses for the Show*

(Joint program with the Philadelphia Rose Society)

David Melrose

*Pruning*

(Demonstration given jointly with the Morris Arboretum)

Maureen Platt

*Cacti and Succulents*

(Joint meeting with the Philadelphia Chapter of the Indoor Light Gardening Society)



PHS members relax between garden visits in Newport, Rhode Island.

## Clinics

### September

Gordon Brandes  
*Lawns* (Joint clinic with Morris  
Arboretum)

PHS staff  
*Plant Clinic*

June Vail  
*Pressed Flower Pictures*

### October

Noreen McCoy  
*Bulb Forcing* (Joint clinic with the  
Morris Arboretum)

PHS Staff  
*Plant Clinic*

Julie Morris  
*Terrariums*

### November

Julie Morris  
*Terrariums* (Joint meeting with Tyler  
Arboretum and joint meeting with  
Morris Arboretum).

### December

Edward L. Lindemann, Noreen  
McCoy, Julie Morris  
*Wreath making* (Joint clinic with  
Morris Arboretum)

## Field Trips

### October

June Vail  
*Pine Barrens of New Jersey*

### February

*Voyage to Mayaluum*

### April

Betty Derbyshire  
*Wild Flower Field Trip in  
Montgomery County*

### June

June Vail  
*Pine Barrens of New Jersey*  
Charles Rogers, horticulturist  
*Philadelphia Zoo*

Robert C. McConnell, director  
*Tour of Fairmount Park*

## Other Activities

### December

*Candlelight Stroll of Society Hill  
and Reception at PHS.*

## Garden Visits

### August

*Garden Visits in Newport, Rhode  
Island*

Mr. and Mrs. Norton Adams  
Mr. and Mrs. Hugh D. Auchincloss  
The Honorable and Mrs. Wiley T.  
Buchanan, Jr.

Mr. and Mrs. Theodore Grosvenor  
Vice Admiral and Mrs. Stuart H.  
Ingersoll

Mr. and Mrs. Richard Sheffield  
Mrs. Theodore S. Sturtevant

### April

*Garden Visit in Bucks County*  
Dr. and Mrs. H. Vernon Lapp

### May

*Garden Visit in Rydal, Pennsylvania*  
Mr. and Mrs. H. Thomas Hallowell,  
Jr.

*Garden Visits in Moorestown, New  
Jersey*

Mr. and Mrs. William L. Collins  
Mrs. T. L. Deren

Mr. and Mrs. Frank K. Keleman





Horticultural therapist Alice Burlingame forcefully makes a point during her presentation.



Teaching the teachers to teach horticulture in the city schools.



City gardens in the summer of 1973.

## COMMUNITY ACTIVITIES

### Committee

Lee M. Raden,  
*Chairman*

Mrs. James C. Horner  
Mrs. E. Perot Walker  
Mrs. John S. Kistler  
Mrs. Adolphus Lewis, Sr.  
Mrs. Esther J. Winters  
John E. Strong  
Minturn T. Wright, III

### School Programs

#### Teacher Training

Continuing in the direction set last year, the Society quadrupled its programs in the Philadelphia public schools to involve well over 4000 students. More than 130 elementary and middle school teachers attended a series of eight monthly training sessions at PHS, learning a different project each time and receiving materials to take back to their classes. Students from more than 60 schools made desert landscapes, pine cone trees, and terrariums. They learned how to propagate foliage plants, force paper whites, and start vegetable and flower seeds in the spring.

The program was run in close cooperation with the Office of Science Education of the School District of Philadelphia and received praise from School District Officials.

#### Horticultural Curriculum Guide

Twenty selected teachers in the Philadelphia public schools spent the year testing the Society's new curriculum guide, Indoor Gardening in the Classroom. Approved by the School District of Philadelphia's Office of Curriculum Planning and Development, the guide is a series of experiments and horticultural projects designed to show students in the upper elementary and middle grades how and why plants grow, and to enable them to fill their classrooms with greenery. Publication is planned for 1975.

A small committee of these teachers met with the Society's educational coordinator to revise the

guide based on their experiences with it; when they have finished PHS will publish the guide and make it available on a large scale.

#### Evening School Courses

Staff members planned and taught a 10 week course in container gardening for the Harriton High Evening School in the spring and fall. The course covered both indoor and outdoor plants. PHS arranged an eight-week course in apartment gardening for the Junto School.

#### Room to Grow Film

The PHS horticultural careers film, Room to Grow, was sent free of charge to 30 schools and organizations in all parts of the country from California to Florida. In addition, the copy turned over to the Vocational Guidance Department of the School District of Philadelphia was used in 89 classes in 22 schools. More than 3000 students viewed the film and learned of the various career opportunities in the field of horticulture.

### Philadelphia Summer Gardens

#### 1973 Program

Two vegetables garden programs for young people in the city were set up and run by the Society during the summer of 1973. More than 100 young gardeners met several times each week and tended their plots, planting and harvesting radishes, tomatoes, greens, zucchini and zinnias.

#### 1974 Program

Drawing on the experiences of the 1973 Program, work was started in the winter with several other organizations to establish a series of community vegetable gardens in all parts of Philadelphia. Working with the City Department of Recreation's Neighborhood Parks Program the Society located 12 interested community groups and helped them clear vacant lots in their area. Bell Telephone company provided topsoil, and by May nearly 400 city farmers were at work in their gardens.

## Summer Garden Workshop 1973

The eighth annual Summer Garden Workshop was run in cooperation with the Morris Arboretum of the University of Pennsylvania at the grounds of the Arboretum. Thirty-five young people attended the sessions. The workshop was held Monday through Thursdays for a nine-week period.

Run successfully as a pilot project for the past eight years, the administration of the workshop was handed over to the Arboretum for the summer '74 season. PHS will continue to act as consultant and the PHS staff will continue to present special programs.

### Counselors:

Wendy Cherner  
Michelle Coleman  
Andrea Daft  
David Hanlon  
Sondra Staller

### Horticultural Therapy

A four-part Horticultural Therapy training program was designed and conducted by the PHS staff. A group of professionals, paraprofessionals and volunteers met for two hours each Tuesday evening during September. Horticultural projects for handicapped, geriatric and psychiatric patients were discussed.

Alice Wessels Burlingame, nationally known horticultural therapist, gave an open lecture on Horticultural Therapy in October to conclude the September sessions.

### Parkway Program

For the fourth year, PHS conducted its "Green In the City" class for the Parkway Program of the School District of Philadelphia. Twenty students from three of the Parkway Units participated in the class designed to introduce students living in an urban environment to horticulture. Plant growing projects, field trips and classes with horticulturists in the various fields were

planned throughout the year. Several of the students worked as part of the PHS work crew for the 1974 Philadelphia Flower and Garden Show.

### Greening of Philadelphia

The Society engaged the planning firm of Decker & Borowsky to prepare a report containing an inventory of public and private organizations engaged in neighborhood beautification and the planting activities in the City of Philadelphia. This report is being used as a catalyst to affect further cooperation between these organizations. As an immediate outgrowth, the Society is working on a publication to be entitled "The Philadelphia Area Green Pages: A Handbook of Information, Tools and Resources for the Greening of Philadelphia."

### Free Plant Clinics

More than 500 people attended the eight free plant clinics held on Sunday afternoons during the past year. The horticultural staff was on hand to answer questions and to diagnose plant problems. In addition, films from the PHS Library were shown.

## BICENTENNIAL PLANNING

The Society, mindful of its link to the past, its affiliation with the Independence National Historical Park and its place in the cultural life of the city, began its bicentennial planning well in advance of the celebration year. Before 1973, we generated and developed ideas. In July 1973, additional staff members were added to coordinate the plans and to assist the committees and existing staff in the execution of the various projects.

During the year, the Council voted to commit up to \$115,000 of its resources toward the funding of these projects. In addition, proposals have been presented to various federal agencies, to local foundations and to corporations.

## 10,000 Trees Committee

C. Stuart Brown  
*Chairman*

Mrs. John W Appel  
Mrs. Paul Betancourt, Jr.  
Frederic W. Clark  
John J. Morley  
Mary Clay Reed  
Paul Rosenbaum  
Mrs. Richard T. Saler  
R. Terry Schnadelbach  
Mrs. Walter Smedley  
Kurt A. Solmssen  
Robert Whyte

One of the Society's most ambitious projects is to raise enough money to plant 10,000 trees in 34 parks throughout Philadelphia before 1976. The committee has helped to organize special projects with schools, garden clubs and other organizations to raise funds for the project. A wide scale public relations campaign has brought the program to the attention of thousands of Delaware Valley residents.

Twenty-five hundred contributions totaling more than \$70,000 were made to the planting fund. As a result, 1,500



Two PHS bicentennial projects in one: Filmmaker Brian Kellman records a tree planting for the 10,000 Trees Project. The footage will be used as part of PHS bicentennial film about trees.

trees were planted in 13 city parks. The names of all contributors are on file in the Society offices. All gifts of \$10 or more are placed on permanent record in Memorial Hall.

### **Bicentennial Film Committee**

Lee M. Raden,  
*Chairman*  
George Borowsky  
Herbert W. Goodall, Jr.  
Mrs. James C. Horner  
Mrs. John S. Kistler  
Mrs. Adolphus Lewis, Sr.  
Henry E. Putsch  
Paul Rosenbaum  
Mrs. Esther J. Winters

During the fall of 1973, an enthusiastic and conscientious committee and several staff members interviewed 16 film makers. During the course of the interviews, the committee solidified the idea of what it wanted and ultimately commissioned Brian Films Inc. to produce a film that will emphasize the importance of trees to the quality of life in the cities and towns of the Northeastern United States. Shooting began in April; the film is scheduled for completion in September 1975.

### **Symposium Committee**

Richard W. Lighty,  
*Chairman*  
Elizabeth Chew Bennett  
Julia F. Davis  
Barbara H. Emerson  
L. Wilbur Zimmerman

The Bicentennial Symposium, "America's Gardening Legacy—A Taste for Pleasure," will consist of six sessions scheduled throughout the growing season. The sessions will be held at horticulturally significant locations in the Delaware Valley. The Symposium Proceedings will be printed at the end of the Bicentennial year.

### **Headquarters Exhibit Committee**

Barbara H. Emerson,  
*Chairwoman, Library  
Committee*  
Mrs. H. Newbold Van Trump, Jr.  
*Chairwoman, Exhibits  
Committee*

and members of the Library  
and Exhibits Committees

The exhibit will focus on Philadelphia's role in the first 200 years of American horticulture. Books, catalogs, charts, related plant and other materials will be exhibited.

### **Philaflorea and The Greening of Philadelphia**

#### **Philaflorea Planning Committee**

Robert S. Ryan  
*Chairman*  
William C. Burleigh  
William L. Day  
Herbert W. Goodall, Jr.  
Mrs. John D. Lohmeyer  
William D. MacDowell  
Henry D. Mirick  
Mrs. John G. Williams  
George Borowsky,  
*Consultant*

The brief history of Philaflorea is included in the statements by the Chairman and the President at the beginning of this report. During its course, the Society established strong ties with Philadelphia '76 and expects to continue working with it in achieving significant results in the greening of the city for 1976 and the years following.



## FLOWER SHOWS

### **1974 PHILADELPHIA FLOWER & GARDEN SHOW**

**Philadelphia Civic Center**

Sunday, March 10 through Sunday,  
March 17

Attendance: 166,000

Despite an energy shortage, which brought about gas rationing in Pennsylvania and neighboring states, the Philadelphia Flower & Garden Show set a new attendance record.

The show's central feature of

lagoons and fountains, sponsored by the Society and staged by J. Franklin Styer's nursery, was impressive. The Show's major exhibits continued to show a high degree of excellence. Interest in the competitive classes continues to grow, no doubt reflecting the burgeoning interest in indoor gardening. A record high of 170 people exhibited their plants in the horticultural classes.

The 1974 Show was the ninth managed solely by the Pennsylvania Horticultural Society and held at the Civic Center.

## **Committees**

Milton J. Shapp, Governor of  
Pennsylvania, *Honorary Chairman*  
Frank L. Rizzo, Mayor of Philadelphia,  
*Honorary Chairman*  
L. Wilbur Zimmerman,  
*Chairman*

## **Advisory**

Harry R. Belinger  
Robert W. Crawford  
John O. Downey  
John D. Healy  
Thacher Longstreth  
William W. Marvel  
I. Ezra Staples

## **Executive**

L. Wilbur Zimmerman,  
*Chairman*  
Mrs. Eugene G. Grace,  
*Vice-Chairwoman*  
George R. Clark  
Alan Crawford, Jr.  
Herbert W. Goodall, Jr.  
Mrs. Henry B. King  
Henry D. Mirick  
J. Liddon Pennock, Jr.  
Mrs. Alfred W. Putnam  
Paul Rosenbaum  
Bradshaw Snipes

## **Steering**

Ralph Bartholomew  
Herbert Bieberfeld  
Beverly Buzas  
Edward Collins  
Eloise Danenhower  
Gordon Eadie  
Herman Hellberg  
Mrs. Walter K. Howard  
William C. Judd  
Mrs. John D. Lohmeyer  
Robert McConnell  
Raymond Morris  
Lee M. Raden  
James K. Rathmell, Jr.

## **Design**

Mrs. Henry B. King  
George Manaker  
Henry D. Mirick  
J. Liddon Pennock, Jr.  
Bruce Robertson

Roland Taylor  
Albert Vick, Jr.

## **Judges and Awards**

Mrs. Alfred W. Putnam,  
*Chairwoman*  
Mrs. Hubert P. Earle,  
*Vice-Chairwoman*  
Mrs. Nathaniel R. Bowditch  
Mrs. Henry B. Coxe, 3rd  
Mrs. John W. Eiman  
Mrs. Horace C. Jones, 2nd  
Mrs. Laird U. Park, Jr.

## **Hospitality**

Mrs. Edward E. Cullen, 3rd,  
*Chairwoman*  
Elizabeth C. Bennett  
Mr. & Mrs. Morris R. Brownell  
Cinda Carter  
Mrs. Preston Carter  
Mr. & Mrs. Philip J. Chapman  
Richard W. Hess  
Mr. & Mrs. James C. Hornor  
Mrs. Milton Laden  
Mr. & Mrs. Robert K. McInnes  
Mr. & Mrs. George A. Reed, Jr.  
Mrs. Victor J. Roberts  
Mr. & Mrs. Wyllys Terry  
Mr. & Mrs. W. Beaumont  
Whitney, 2nd  
William H. Wood, 3rd

## **Competitive Classes**

Mrs. Henry B. King,  
*Chairwoman*  
Mrs. John D. Lohmeyer,  
*Vice-Chairwoman*

## **Arrangement Classes**

Mrs. Lawrence Drake,  
*Chairwoman*  
Mrs. Norman S. Bemis,  
*Vice-Chairwoman*  
Mrs. Duffield Ashmead, 3rd  
Mrs. Charles Becker, Jr.  
Mrs. Lloyd M. Coates, Jr.  
Mrs. Mercade A. Cramer, Jr.  
Eleanor W. David  
Mrs. Harry C. Groome  
Mrs. Adolph A. Hirstius  
Mrs. James C. Hornor  
Mrs. William Ward, 4th  
Mrs. Robert Warth  
Mrs. Phoebe L. Welsh



### **Garden Classes**

Mrs. Nicholas Biddle, Jr.,  
*Chairwoman*

Mrs. J. Brooks Semple,  
*Vice-Chairwoman*

### **Room, Table & Balcony Classes**

Mrs. George W. Schelling,  
*Chairwoman*

Harriet M. Saunders,  
*Vice-Chairwoman*

Mrs. Armin C. Frank,  
*Vice-Chairwoman*

### **Horticultural Classes**

Mrs. G. Morris Dorrance,  
*Chairwoman*

Mrs. W. C. Buchanan,  
*Vice-Chairwoman*

Mrs. John G. Williams,  
*Vice-Chairwoman*

Mrs. Samuel D. Allen

Mrs. Ingersoll Benson

Mrs. James F. Bodine

Mrs. Edward P. Bromley, Jr.

William C. Burleigh

Mrs. Bukk G. Carleton, 3rd

Mrs. Preston D. Carter

Mrs. John R. Clark

Mrs. S. C. Cleaves

Mrs. Edward E. Cullen, 3rd

Mrs. G. Jeremy Cummin

Mr. & Mrs. William P. Eckfeldt

Mrs. Richard Edgren

Mrs. Henry C. Evans

Mrs. Thomas Fisher

Mrs. John M. Fogg, Jr.

Mrs. Bernard W. Fox

Mrs. F. Otto Haas

Mr. & Mrs. Walter K. Howard

Mrs. Charles Ingersoll

Mr. & Mrs. Sidney Keith

Mrs. W. Roy Kolb

Helen LeBlond

Mrs. W. R. Mackinney

Mrs. Edward W. Madeira

Mrs. Alan McIlhenny

Mrs. J. Don Miller

Mrs. Andrew W. Porter

Robert Preucel

Lee M. Raden

Mrs. J. Pancoast Reath

Gainor Roberts

Ruth Robinson

Mrs. Robert S. Ross

Mrs. Edward Starr, 3rd

Mrs. John Thacher

Mrs. H. Eastburn Thompson

Mrs. Charles Truitt

Mrs. E. Perot Walker

Mrs. Nelson D. Warwick, Jr.

Mrs. W. Cooper Willits

Mrs. Lindsay Wolfe

Mrs. Edward F. R. Wood, Jr.



### **Horticultural Clerks**

Mrs. C. Madison Riley,

*Chairwoman*

Mrs. Edward C. Rorer,

*Vice-Chairwoman*

### **Nomenclature**

Barbara H. Emerson

John M. Fogg, Jr.

### **Office and Staging Volunteers**

Doris W. Atkinson

Mary Calwell

Mrs. Preston D. Carter

Mrs. Frances L. Harrigan

Mrs. John S. Kistler

Mrs. Milton Laden

Mrs. H. Vernon Lapp

Mrs. Donald R. Lenton

Mrs. D. J. McNamara

Mrs. Ward C. Miller

Mrs. Victor J. Roberts

Mrs. Randolph M. Slater

Elizabeth B. Wheeler

### **Exhibitors and Awards Lunch**

Mrs. Alfred W. Putnam,

*Chairwoman*

Mrs. Hubert P. Earle

Mrs. Herbert W. Goodall, Jr.

Mrs. John D. Lohmeyer

### **Major Exhibitors**

#### **Nursery and Commercial**

##### **Greenhouses**

County Line Landscape Nursery

De Wilde's Rhodo-Lake Nursery

Gale Nurseries

Grant-Leighton Associates

Hansen Brothers Nurseries, Inc.

Hansen's Ground Covers

Judd's Hollylan Nurseries

Muehlmatt's Greenhouses

Red Oak Nurseries, Inc.

Rose Valley Nurseries

Snipes Landscape and Garden Center

Star Roses

J. Franklin Styer Nurseries

Vick's Wildgardens, Inc.

Whitemarsh Landscapes, Inc.

#### **Educational**

Delaware Valley College of Science  
and Agriculture

Eastern Montgomery County Area  
Vocational-Technical High School  
International Shade Tree Conference,  
Inc.

George Milstein

Pennsylvania Nurserymen's  
Association

The Pennsylvania State University

Rosade Bonsai Studio

Walter Biddle Saul High School of  
Agricultural Sciences

Temple University, Ambler Campus

U.S. Department of Agriculture

APHIS-Plant Protection and  
Quarantine Program

#### **Floral**

Allied Florists of Delaware Valley, Inc.

H.H. Battles, Inc.

W. Atlee Burpee Company

Delaware County Pot Plant Growers

Florists' Transworld Delivery  
Association

David Lutt Florist

Meadowbrook Farm

Middle Atlantic Carnation Growers

Muller Society Hill Florist

George Robertson and Sons, Inc.  
Roses, Inc.

Rucker's Greenhouses

Wm. H. Starke & Son, Inc.

Andrew H. Strang, Inc.

Waldor Orchids, George Off and Sons

#### **Plant Societies**

African Violet Society of Philadelphia

American Rhododendron Society

American Rock Garden Society

Indoor Light Gardening Society  
of America

Pennsylvania Bonsai Society

Philadelphia Area Daffodil Society

Philadelphia Cactus and Succulent  
Society

Southeastern Pennsylvania Orchid  
Society

#### **Special Exhibits**

Bucks County Audubon Society

Eastern Pennsylvania Sod Growers  
Association

Fairmount Park Commission

Friends Hospital

Ikebana International

Morris Arboretum  
Pennsylvania Christmas Tree  
Growers' Association  
Pennsylvania Roadside Council, Inc.  
The Pennsylvania Society for the  
Prevention of Cruelty to Animals  
Philadelphia Fire Department  
Philadelphia Zoological Garden

## 1973 HARVEST SHOW

Memorial Hall, Fairmount Park  
Saturday and Sunday, September 29  
and 30

Held in cooperation with the  
Fairmount Park Commission and staged  
with the cooperation of the Philadelphia  
Area Judges Council.

The Harvest Show is one of the few  
of its kind. It is an opportunity for  
horticulturists to show the fruits of a  
growing season; none of the plants are  
forced. It is an intimate show, one  
where the viewer can wander quietly  
without the hustle and bustle of the  
larger show and can study the plant  
materials without pressure. Visitors  
always deem it "a jewel of a show."  
Almost 6,000 people visited the 1973  
show.

## Committee

Mr. and Mrs. S. N. van Trump, Jr.  
*Chairpersons*

Mrs. Clarence W. Alexander  
Mrs. Charles E. Barnes, Jr.  
Mrs. George C. Beebe  
Wilbur Beck  
Mrs. Louis E. Bourquin  
Mrs. Joseph Bray  
Mrs. Walter Bringolf  
Mrs. William C. Buchanan  
Mrs. Watson S. Campbell  
Mrs. Preston D. Carter  
Mrs. Allen Corson, Jr.  
Mrs. Warren E. Crane  
Mrs. Francis M. Day  
Mrs. William P. Eckfeldt  
Mr. & Mrs. Thomas B. Everist  
Mrs. Morton Fellheimer  
Mrs. Thomas Fisher, Jr.  
Mrs. Robert Galloway  
Mrs. George Rodney Haines  
Mrs. Francis L. Harrigan  
Mrs. George A. Hewitt  
Mrs. John S. Kistler  
Mrs. William Lappin  
Mrs. John R. Larkin  
Mrs. Marie Louise Lee  
Mrs. D. Rice Longaker



Mrs. J. West Loveland  
 Mrs. Albert T. Maymon  
 Mrs. Robert J. McLoud  
 Mr. & Mrs. James A. McQuail, Jr.  
 Eric Meitzner  
 Mrs. John Metz, 3rd  
 Mrs. Ward Miller  
 Mrs. Clark R. Morris  
 Mrs. Ernest Morton  
 Mr. & Mrs. Ralph B. Parks  
 Mrs. Carl Ray  
 Mr. & Mrs. George A. Reed  
 Mrs. Victor J. Roberts  
 Mrs. D. Allen Sampson  
 Mr. & Mrs. Frank Seymour  
 Mrs. George F. Sullivan  
 Mrs. Lyle R. Tanner  
 Mrs. William Underwood  
 Mrs. W. Andrew Wright  
 Mrs. George E. Yerger, Jr.  
 Mrs. Rudolf Zaprauskis

#### **Garden Club Sponsors**

The Garden Club of Bala-Cynwyd  
 Chestnut Hill Garden Club  
 The Country Gardeners  
 The Garden Class of the Woman's  
 Club of Downingtown  
 Drexelbrook Garden Club  
 Four Counties Garden Club  
 The Gardeners  
 The Garden Workers  
 Greene Countrie Garden Club  
 The Greenhouse  
 Hill and Hollow Garden Club  
 Huntingdon Valley Garden Club  
 Garden Club of Lansdowne  
 The Club of Little Gardens of  
 Malvern  
 Locksley Garden Club  
 Martha Washington Garden Club  
 Norristown Garden Club  
 Old Eagle Garden Club  
 Old York Road Garden Club  
 Outdoor Gardeners  
 Penn Valley Garden Club  
 The Planters Garden Club  
 Pottstown Garden Club  
 Providence Garden Club of  
 Pennsylvania  
 Ridley Manor Garden Club

Rose Tree Gardeners  
 The Seedlings Garden Club  
 Society of Little Gardens  
 Spade and Trowel Garden Club of  
 Kennett Square  
 Garden Club of Springfield  
 Spruce Hill Garden Club  
 Suburban Garden Club  
 The Town Gardeners  
 Trevoze Horticultural Society  
 Twin Valleys Garden Club  
 Garden Class of Woman's  
 Community Club of Uwchlan  
 Valley Garden Club  
 Warrington Garden Club  
 Wayne Woods Garden Club  
 The Weeders  
 West Chester Garden Club  
 West Chester Planters  
 West Grove Garden Club

#### **Major Exhibitors**

African Violet Society of  
 Philadelphia  
 The William Penn Branch of the  
 American Begonia Society  
 American Rock Garden Society,  
 Delaware Valley Region  
 Arboretum of the Barnes Foundation  
 Charlotte Liebig Archer  
 Mrs. Sergeant Brewster  
 W. Atlee Burpee Company  
 Delaware Valley College  
 of Science and Agriculture  
 William A. Dyre  
 Fairmount Park Commission  
 Fairmount Park, Recreation Division  
 Fort Washington Garden Mart  
 Mrs. Richard P. Fry  
 Garden Club Federation of  
 Pennsylvania  
 Heinrich A. Haist  
 Herb Society of America,  
 Philadelphia Unit  
 Hill and Hollow Garden Club  
 Ikebana International  
 Indoor Light Gardening Society,  
 Philadelphia Chapter  
 Ely J. Johnson  
 Mrs. John S. Kistler  
 Mrs. Raymond E. Knauff

Linville Orchards  
Joseph J. Mammino  
Larry Mammino  
Meadowbrook Farm  
Men's Garden Club of Delaware  
Valley  
Middle Atlantic Carnation Growers  
Morris Arboretum  
The Neighborhood Garden  
Association of Philadelphia  
Outdoor Gardeners  
Palette Gardens  
Pennsylvania Bonsai Society  
Pennsylvania Department of  
Environmental Resources'

Bureau of Forestry  
Penn Valley Garden Club  
Philadelphia Museum of Art  
Fairmount Park House Guides  
Philadelphia Zoological Garden  
Mrs. F. M. Precopio  
Ridley Manor Garden Club  
Roses, Inc.  
Schuylkill Valley Nature Center  
Mrs. George W. Stott  
Southeastern Pennsylvania Orchid  
Society  
Southmeadow Fruit Gardens  
Twin Valley Garden Club

Members select a free plant after the Annual Meeting.





Open House at Society headquarters after the Candlelight Stroll.

# HEADQUARTERS EXHIBITS AND SHOWS

## CHRISTMAS SHOW

December, 1973

The Christmas Show is usually one of the most imaginative and popular shows staged at Society headquarters.

Exhibitors are ingenious in their use of every conceivable kind of natural material including seeds, pods, dried flowers, fruits, nuts, wood or other materials. These are used to decorate the tree, construct creches, make wreaths, kissing balls, and wall hangings.

Members were able to visit the exhibit throughout December. They were also invited to see the show on the evening of the area Candlelight Stroll and to return to the Society headquarters for our annual open house.

### Committee

Mrs. William P. Eckfeldt,  
*Chairwoman*  
Mrs. Charles E. Barnes, Jr.  
Mrs. Howard Boyd  
Mrs. Thomas G. Brown  
Laura Bulmer  
Mrs. Preston D. Carter  
Mrs. Edward Cullen  
Mrs. Nelson Dewey  
Mrs. Hubert P. Earle  
Mrs. Arthur Hacker, 3rd  
Mrs. Wilson B. Harkins  
Mrs. J. Slater Henry  
Mrs. Adolph A. Hirstius  
Mrs. Walter W. Hutcheson  
Mrs. Milton Laden  
Mrs. H. Vernon Lapp  
Mrs. William M. Lemmon  
Mrs. D. Rice Longaker  
Mrs. W. J. MacNeish  
Mrs. Kenneth G. Matheson  
Mrs. Alan McIlhenny  
Mrs. William H. Naylor  
Mrs. John R. Park  
Mrs. D. Alan Sampson  
Mrs. William B. Stevenson  
Mrs. Charles S. Truitt

Mrs. S. N. van Trump, Jr.  
Mrs. James G. Waitneight  
Mrs. J. Harold Watt  
Mrs. C. Elmer Wright

### Major Exhibitors

Bala-Cynwyd Garden Club  
Garden Club of Bala-Cynwyd  
Berwyn Garden Club  
Countryside Gardeners  
Drexelbrook Garden Club  
The Gardeners  
Loren Young Johnson Family  
Martha Washington Garden Club  
Media Welcome Wagon Garden Club  
Penn Valley Garden Club  
Rose Garden Club  
Shipley School, Charlotte Ridpath  
Garden Club of Springfield  
Spruce Hill Garden Club  
Suburban Garden Club  
Tyler Arboretum, Gertrude Wister  
Valley Forge Garden Club  
Villanova Garden Club  
West Chester Garden Club  
West Chester Planters

### PLANT SOCIETY SHOWS

The Society provided staff assistance and made its facilities available for these shows:

Pennsylvania Bonsai Society  
September 15 to 21, 1973  
American Rhododendron Society,  
Philadelphia Chapter  
Saturday and Sunday,  
May 18 and 19, 1974  
28th Annual Rose Show of the  
Philadelphia Rose Society  
Saturday and Sunday,  
June 1 and 2, 1974  
The Eleventh Annual Show of the  
Middle Atlantic Regional Lily Group  
Saturday and Sunday,  
June 29 and 30, 1974

### EXHIBITS IN THE HEADQUARTERS

The Society purchased new freestanding exhibit panels and new

tables to provide a more flexible staging for headquarters exhibits. The new materials, combined with an enthusiastic and committed exhibit committee, has provided outstanding exhibits throughout the year.

### Exhibits

#### Committee

Mrs. S. N. van Trump, Jr.  
*Chairwoman*  
Mrs. Norman S. Bemis  
Mrs. Preston D. Carter  
Mrs. Elmer Hartwick  
Mrs. Richard E. Heckert  
Mrs. George A. Hewitt  
Mrs. Adolph A. Hirstius  
Mrs. H. Vernon Lapp  
Mrs. William E. Lappin  
Mrs. Edwin A. Peebles  
Mrs. Victor J. Roberts  
Mr. & Mrs. Frank E. Seymour

#### July - August

*Colonial Gardening*

#### September

*Indoor Light Gardening*

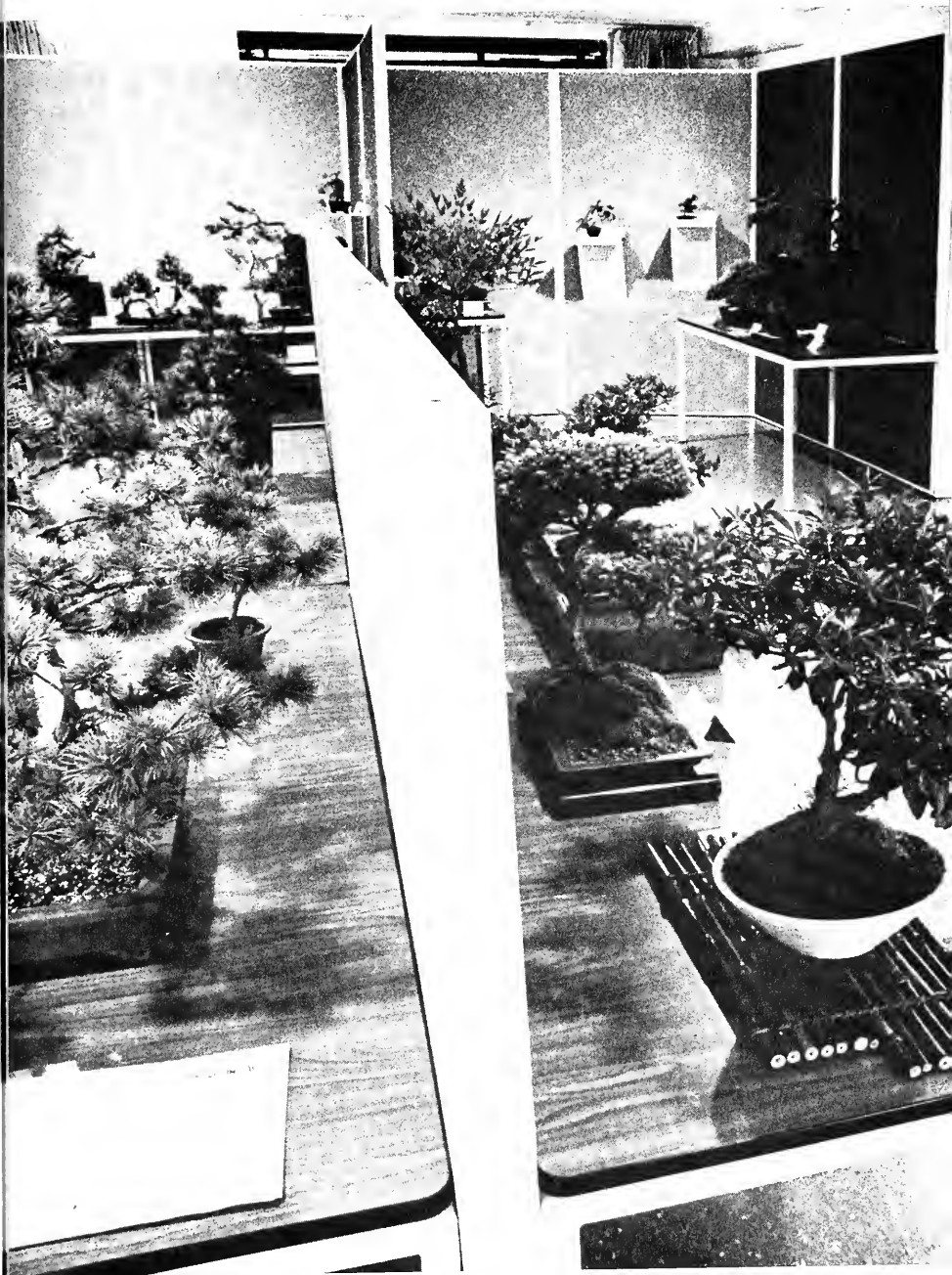
#### October

*Highlights from 1973 Harvest Show*  
*Learning about Leaves*  
Penn Valley Garden Club  
*A Tree for the Birds*  
Twin Valley Garden Club  
*Nature's Sculptures*  
Hill and Hollow Garden Club  
*Plant Containers. Classic Shapes and Contemporary Designs.*  
Charlotte Liebig Archer  
Ann F. Hayes  
*Pumpkins and Squashes, etc.*  
W. Atlee Burpee and  
Linvilla Orchards  
*Weathered Beauty (Arrangements)*

#### November

*Photographic Exhibit*  
"Traveling from Coast to Coast in Canada"  
J. Anthony MacQuail, 3rd





Pennsylvania Bonsai Society exhibit at Society headquarters.

*Hollies*

June Vail

*Dwarf Evergreens*

Anita H. Kistler

*Evergreens*

Mrs. Niels H. Jensen

*Evergreens*

Mr. & Mrs. Charles Gruber

**January**

*Treasures from the Sea*

*Herbarium Specimens of*

*Seaweeds*

Howard H. Seymour

*Seaweed Designs*

Laura Tracy

Seascapes (Arrangements)

*Water Grasses in Containers.*

*Creations from Natural Materials*

Mrs. Raymond E. Knauff and

Mrs. F. M. Precopio

**February - March**

*Wood in our Lives*

*Antique Woodworking Tools*

H. Vernon Lapp

*Growth Rate of Trees and*

*Enjoy your Fireplace*

Clyde M. Hunt

U.S.D.A., Forest Service

*Tree Sculptures*

John J. Gerhart

*Gypsy Moth*

Ronald C. Langford

Penna. Dept. of Environmental

Resources. Bureau of Forestry

*Woodworkers Art—Traditional and*

*Contemporary*

Daniel Jackson

H. Vernon Lapp

Wynn Peeples

**April**

*Plan your Summer*

Mrs. Adolph A. Hirstius

*City Balconies*

Germantown Garden Club

Rose Tree Gardeners

*Air Dried Plant Material*

Frances T. Balaban

*Vegetable Gardening*

Charles A. Gruber

*Pressed Plant Material*

Mrs. Lyle R. Tanner

*Techniques of Drying Plant Material*

Mrs. Adolph A. Hirstius

*Gardening Needs*

Primex Garden Center

*Dioramas of City Gardens*

*Designs of Pressed Plant Material*

*from 1974 Spring Show*

**May**

*Rhododendrons*

Mr. & Mrs. Lyman Clark

**June**

*Non-Flowering Plants*

Mrs. George A. Hewitt

*Photographs of Mushrooms*

Donald W. Iffland

*Display of Mosses*

*Display of Hardy Ferns*

*Fungi*

Dr. Patricia Allison

Mr. & Mrs. Robert B. Taylor



That's not a piece of sculpture on the left, but a tree fungi. It's part of the mushroom exhibit at Society headquarters.



## AWARDS

### Committee

J. Liddon Pennock, Jr.

*Chairman*

John S. Kistler

Richard W. Lighty

J. Franklin Styer

Mrs. S. Newbold van Trump, Jr.

### Distinguished Achievement Medal 1973

#### To Jacques L. Legendre

For his horticultural achievements during his 65 years in four great nurseries in the world, and his activities in the Pennsylvania, New York and Massachusetts Horticultural Societies.

**PHS Gold Medal Certificate**

**To Mrs. John R. Clark**

For her skill and perseverance in creating and growing a wide variety of beautiful container grown plants.

**1973 PHS Plant Society Award**

**To Dorothy Ebel Hansell**

For her record of service to horticultural societies and organizations.

**The 1973 Landscape Horticulture Award of the Greater Philadelphia Chamber of Commerce and the Pennsylvania Horticultural Society**

**To Beryl Price, architect,**

**The Fidelity Bank,**

**Yarway Corporation.**

For their well designed and well maintained landscapes around commercial concerns.

**Distinguished Garden Awards**

**To Mr. & Mrs. Logan B. Gill**

**Mr. & Mrs. Robert H. Page**

**Mr. & Mrs. Orville H. Bullitt, Jr.**

**PHS Grand Horticultural Sweepstakes for 1973**

**To Mrs. J. Pancoast Reath.**

For the highest number of Blue Ribbons in the 1973 Philadelphia Flower & Garden Show and the 1973 Harvest Show to:

**Special Award**

**To Robert Day**

Outstanding Junior Horticulturist  
1973

**MAJOR FLOWER SHOW AWARDS**

**1974 PHILADELPHIA FLOWER AND GARDEN SHOW**

**The Flower Show Award of the**

**Pennsylvania Horticultural Society** for an exhibit of extraordinary merit, which stimulates an interest in horticulture to Indoor Light Gardening Society of America, Philadelphia Chapter.

**The Pennsylvania Horticultural Society Awards of Merit to:**

W. Atlee Burpee Company  
Fairmount Park  
Meadowbrook Farm  
Morris Arboretum  
Vick's Wildgardens, Inc.  
Waldor Orchids

**The Philadelphia Flower and Garden Show Trophy**

for an exceptional exhibit in the 1974 show to:  
DeWilde's Rhodo-Lake Nursery  
Friends Hospital  
Gale Nurseries  
Muehlmann's Greenhouses  
Pennsylvania Bonsai Society  
Pennsylvania Christmas Tree Growers' Association  
Pennsylvania Nurserymen's Association  
Philadelphia Area Daffodil Society  
Philadelphia Zoological Garden  
William H. Starke and Son, Inc.  
Rosade Bonsai Studio  
Temple University

**The Pennsylvania Horticultural Society Horticultural Sweepstakes Trophy**

for the accumulation of the greatest number of points in the Horticultural Classes to:  
Mrs. John G. Williams

**The Pennsylvania Horticultural Society  
Room Award** for the outstanding  
Blue Ribbon winner in the Room  
Classes to:  
Spade and Trowel Garden Club of  
Kennett Square

**The Pennsylvania Horticultural Society  
Table Award** for the outstanding  
blue ribbon winner in the Table  
Classes to:  
Rose Tree Gardeners

**The Pennsylvania Horticultural Society  
Flower Arranging Sweepstakes  
Trophy** to the individual  
accumulating the greatest number of  
points in the Arrangement Classes  
Section to:  
Mrs. John W. Eiman

**The Pennsylvania Horticultural Society  
Club Sweepstakes Award** for the  
accumulation of the greatest  
number of points in the  
Arrangement Classes Section to:  
Huntingdon Valley Garden Club

## **1973 HARVEST SHOW**

**The Flower Show Award of the  
Pennsylvania Horticultural Society**  
for an exhibit of extraordinary merit  
which stimulates an interest in  
horticulture to:  
Ely J. Johnson

**Horticultural Sweepstakes Award**  
to the individual winning the greatest  
number of Blue Ribbons in the  
Horticultural Section to:  
Frank C. Wuest

**Arrangement Sweepstakes Award**  
to the individual winning the greatest  
number of Blue Ribbons in the  
Arrangement Section to:  
Mrs. Huntingdon Jackson

**Club Sweepstakes Trophy** to the Club  
winning the greatest number of Blue  
Ribbons in the Show to:  
The Philadelphia Rose Society

**Award of Honor Ribbons** for superior  
exhibits to:  
Arboretum of the Barnes Foundation  
Fort Washington Garden Mart  
Rick Fredette with Edward L.  
Lindemann  
Philadelphia Chapter, Indoor Light  
Gardening Society  
Mrs. Raymond E. Knauff with  
Mrs. F. M. Precopio  
Larry Mammino  
Outdoor Gardeners  
Pennsylvania Bonsai Society  
Mrs. George W. Stott

## **PRESENTED AT OTHER FLOWER SHOWS**

**The Pennsylvania Horticultural Society  
Medal** to:  
Kartuz Greenhouses, Wilmington,  
Mass. at the New England Spring  
Garden and Flower Show.  
Austin High School at the Chicago  
Flower and Garden Show.



New addition to the library.

## SERVICES

### LIBRARY

#### Committee

Barbara H. Emerson

*Chairwoman*

George R. Clark

Mrs. Edward J. Garra

Mrs. Armen Gevjan

Bessie Greenawalt

Mrs. James C. Hornor

Mrs. H. Vernon Lapp

Richard W. Lighty

Mary M. Martin

Lee M. Raden

Mrs. Keith Robertson

Adolph G. Rosengarten, Jr.

#### Circulation

More than 5,500 books, journals, and pamphlets circulated from the PHS Library this past year. The Library's collections of thirty slide sets and films were sent to more than 100 garden clubs and other groups for use in their programs.

#### Friends of the Library

Elizabeth D. A. Alexander

Mrs. Carl H. Anderson

Mrs. F. Morse Archer

Charlotte Liebig Archer

Ernesta D. Ballard

Frederic L. Ballard

Mary Barnes

Mrs. A. Barol

Rev. and Mrs. R. Beckett

Mrs. Paul Betancourt, Jr.

Mrs. George P. Bissell, Jr.

Breyer Foundation

Mrs. Henry W. Breyer

M.M. Brubaker

David Burpee

Mary Calwell

William S. Carden, Sr.

Mrs. John B. Carson

Mrs. S. L. Chambers

Mrs. Harry L. Christman

Mrs. Howard D. Cogan

Mrs. G. Dawson Coleman

Mrs. Alan Corson, Jr.

Mrs. Walter J. Cowan, Jr.

Alan Crawford

Mary Muller Cross  
 Mrs. Stephen Cutler  
 Mrs. Timothy R. Davis, Jr.  
 Mrs. M. B. Debacker  
 Mrs. Arthur Dewar  
 Mrs. John Dilks  
 E. A. Doelp  
 Mrs. Franklin L. D'Olier, Jr.  
 Mrs. G. M. Dorrance  
 Mrs. Jerome J. Drucker  
 David D. Dunn  
 Eleuthere I. du Pont  
 Bertha L. Eastwood  
 William C. Ellis  
 Barbara H. Emerson  
 Caroline B. Ewing  
 Mrs. George M. Ewing  
 Lenore T. Ferry  
 Joseph L. Finn  
 Mrs. Thomas Fisher  
 Kathryn S. Fithian  
 Mrs. William M. Flook, Jr.  
 Martin E. Fossler  
 Ralph T. Fox, Jr.  
 Garden Club of Springfield  
 Mrs. E.J. Garra  
 Nancy J. George  
 Mr. & Mrs. Armen Gevjan  
 Mrs. Harry Green  
 Mr. & Mrs. Edgar R. Habbersett  
 Mrs. John H. Halford  
 Mrs. J. G. Richard Heckscher  
 Mrs. Glen Sefton Hiers  
 Hill Hardware Company  
 Mrs. Julian W. Hill  
 Mrs. Adolph A. Hirstius  
 Mrs. James C. Hornor  
 M. Martin Isaacs  
 Horace C. Jones  
 Mr. & Mrs. H. Joseph Kehl  
 Ann Kelly  
 Mrs. W. Stanton Kip  
 John S. Kistler  
 Doretta Klaber  
 Mrs. George F. Kugler, Jr.  
 Mrs. Frank W. Kussy  
 Rosetta Kutcher  
 Charles H. Landreth  
 Mr. & Mrs. H. Vernon Lapp  
 P. M. Lessig  
 Mrs. David A. Linforth  
 Mrs. John E. Lockwood  
 A. Basil Lyons  
 Joseph K. Mackay  
 Mrs. Crawford C. Madeira  
 Joseph G. Marano  
 Mariner Foundation Trust  
 Maria A. Marren  
 Mrs. Thomas F. Marshall  
 Mrs. John E. McCloskey  
 Mrs. Robert C. McConnell  
 Stephen C. McCormick  
 Paul McFarland  
 Erich F. Meitzner  
 Dorothea B. Meltzer  
 Mrs. Gilbert P. Monet  
 Robert E. Montgomery  
 Susan B. Montgomery  
 Mrs. J. M. Morrison  
 Mrs. Harold N. Nash  
 Mrs. Thomas R. O'Malley  
 Mrs. James B. Owens  
 J. Liddon Pennock, Jr.  
 Mrs. George T. Pew  
 Lucile Porter  
 Harold Beckler Pough  
 Mrs. Frank M. Precopio  
 Elizabeth Glenn Ravdin  
 Mrs. J. Pancoast Reath  
 G. Ruhland Rebmann, Jr.  
 Margaret B. Rebmann  
 Mrs. Bruce Riddle  
 Joseph T. Riemer  
 Mrs. E. F. Rivinus  
 Mrs. George Robbins  
 Mrs. A. Roberts  
 Mrs. Conway Robertson  
 George Robertson and Sons, Inc.  
 Mrs. Charles S. Rockey  
 Adolph G. Rosengarten, Jr.  
 Ross G. Rusch  
 Richard A. Sack  
 Cecilia D. Saltonstall  
 Mrs. Louis F. Schaeffer, Jr.  
 Mrs. Lewis C. Scheffey  
 Mrs. J. L. Serrill, Jr.  
 Estelle Sharp  
 Mrs. C. A. Sienkiewicz  
 S. P. Silberstein  
 Mrs. W. Graham Smith  
 L. E. Snodgrass  
 Mrs. Francis P. Steel  
 Marilyn L. Steinbright  
 J. A. P. Strassburger

Mrs. Wyllys Terry, Jr.  
Mrs. Thomas D. Thacher  
Mrs. John B. Thayer  
Mrs. G. Eastburn Thompson  
Mrs. Edward T. Twardowski  
Twin Valleys Garden Club  
Mrs. Charles W. Ufford, Jr.  
Mrs. Frank R. Wallace  
Mrs. William S. Wassell  
Mrs. Henry M. Watts  
Anita Edge Weisbrod  
Mrs. Lloyd P. Wells  
Mr. & Mrs. Joshua C. Whetzel, Jr.  
Phyllis G. Williams  
Mr. & Mrs. Curtin Winsor  
Mrs. Caspar Wister  
Mrs. John C. Wister  
Howard Page Wood

### **Gifts to the Library**

Ernesta D. Ballard  
Nancy Berg  
D. K. Blaine  
Gladys Bulmer  
George R. Clark  
Henry Clifford  
Mrs. Erastus Corning  
Joseph Ewan  
Mrs. Robert G. Harlow  
Robert E. Montgomery  
Theodore Newbold  
Paul Palomino  
Joanna Reed  
Francie Robbins  
Samuel L. Shober, Jr.  
Mrs. Drayton M. Smith  
Edwin J. Toth  
Evelyn S. Walker  
Mrs. W. Cooper Willits  
Mrs. John C. Wister

### **Library Repair Program**

In September 1971, the library staff planned a restoration and repair department, under the guidance of Carolyn Horton, noted book conservator. The PHS Library is one of the few libraries in the United States to have such a program and it is the first time it has been done at PHS. Since its inception the repair workshop has handled hundreds of books from the library's collection of more than 15,000 volumes.

Leather books are cleaned and oiled each year. Books damaged in circulation are repaired. Out-of-print books that are bought or given to the library are rebound or restored before being added to the general collection.

Often valuable horticultural books go out of print a few months after publication. The repair program is designed to conserve such books and to maintain the library's collection and ensure the preservation of an important part of our horticultural heritage.

### **Library Study Evenings**

The Library staff planned two study evenings to introduce members to the many resources the library has to offer, in addition to its general collection of books. Nursery and seed catalogues, other plant material sources, reference material, current and bound periodicals were discussed by the staff and members attending.





## GARDENS

### Committee

Edward A. Doelp  
Martha L. Garra (Designer)  
Jane Inverarity  
Helen Kaufman  
Eloise Krewson  
Miriam Kroungold  
Mrs. H. Vernon Lapp  
Ann McPhail  
Virginia Parker  
Mary A. Raffensperger  
Frank Seymour  
Mary Seymour  
Benjamin Wilson

### 18th Century Garden

Committee members contributed approximately 625 hours maintaining the garden during the 1973 season. This committee also maintained the vegetable and cutting garden behind the PHS building. One committee member worked many hours during the winter months helping with the maintenance of the PHS greenhouse.

### Bishop White Garden

The PHS staff continues to plan and maintain the Bishop White garden on a year-round basis. Part of the National Park System, the Bishop White garden is located at 3rd and Walnut Streets. Occasionally members of the 18th Century Garden Committee will lend a hand with the garden maintenance.

## PUBLICATIONS

### Committee

L. Wilbur Zimmerman,  
*Chairman*  
Charlotte L. Archer  
M. M. Brubaker  
George Harding  
Mrs. Walter K. Howard  
Craig S. Oliver  
Ralph Sargent

During the year, the Society published: **THE GREEN SCENE:** Horticulture in the Delaware Valley.

In January, *The Green Scene*, a bimonthly publication, added four-color covers, front and back, and eight more pages to its usual 24. Permission from other magazines and newspapers to reprint articles appearing in *The Green Scene* was given. *The Green Scene* received considerable favorable publicity, and the editor was cited for outstanding work in the field of magazine editing by Women in Communications, Philadelphia Professional Chapter, Inc.

**PHS NEWS:** Beginning in September, the *News* was published 11 times a year, rather than six. Members and staff found there was simply too much news to continue on the bimonthly basis that PHS adopted when it began to publish *The Green Scene*.

### THE 1974 PHILADELPHIA FLOWER & GARDEN SHOW PROGRAM.

Twenty-two thousand copies, a 7,000 increase over last year, were printed and sold in 1974. In addition to information about the Show exhibits, articles about horticulture were contributed by PHS members.

**1973 YEARBOOK** was sent to members and many horticultural groups.

## Treasurer's Comments

Last year I drew attention to the healthy financial condition of the Society, and the several new projects with which we are involved thanks to our financial strength. The unprecedented success of the Philadelphia Flower and Garden Show and our annual fund-raising preview dinner has enhanced our finances as reflected in the accompanying statements. Our continuing progress enables the Society to remain in the forefront of the City's cultural and educational programs.

Respectfully,  
 Alan Crawford, Jr.  
*Treasurer*

### THE PENNSYLVANIA HORTICULTURAL SOCIETY BALANCE SHEET (CASH BASIS) JUNE 30, 1974

#### ASSETS

	<i>Operating Fund</i>	<i>Endowment Funds</i>	
		<i>Unrestricted</i>	<i>Restricted</i>
Cash (savings accounts \$38,085)	\$ 62,667	\$ 644	\$5,354
Marketable securities (market value \$607,849)	174,850	516,648	
Furniture, equipment and improvements	99,568		
Accumulated depreciation and amortization	69,670		
	29,898		
Books and portraits	26,909		
	<u>\$294,324</u>	<u>\$517,292</u>	<u>\$5,354</u>

#### LIABILITIES

Payroll taxes withheld	\$ 283		
Special Fund - "10,000 Trees"	24,141		
Reserve for Flower Show losses and public service projects	170,000		
Pension Fund		\$ 23,200	
Principal			
Balance, June 30, 1973	98,311	503,268	\$5,354
Excess of income over expense	26,589		
Transfer to reserve for Flower Show losses and public service projects	(25,000)		
Unrestricted contributions		17,462	
Loss on sale of investments		(27,888)	
Life membership dues		1,250	
Balance, June 30, 1974	<u>99,900</u>	<u>494,092</u>	<u>5,354</u>
	<u>\$294,324</u>	<u>\$517,292</u>	<u>\$5,354</u>

The accompanying notes are an integral part of these financial statements.

**THE PENNSYLVANIA HORTICULTURAL SOCIETY  
STATEMENT OF OPERATING FUND INCOME (CASH BASIS)  
FOR THE YEARS ENDED JUNE 30, 1974 AND 1973**

	1974	1973*
<b>Income</b>		
Membership dues .....	\$ 67,676	\$ 63,570
Invested funds and savings accounts .....	35,213	25,897
Schaffer Trust .....	17,883	16,325
Designated contributions .....	4,885	2,038
Flower and Garden Show .....	458,249	364,463
Preview Dinner .....	88,343	74,892
Fees and sales .....	34,437	34,426
Other activities .....	14,556	10,434
Grant for film production .....	5,000	—
	<u>726,242</u>	<u>592,045</u>
<b>Expense</b>		
Salaries .....	176,916	150,476
Other employee expenses .....	30,640	22,813
Building maintenance and utilities .....	13,510	12,639
Depreciation and amortization .....	6,348	5,121
Administrative supplies and expenses .....	<u>28,822</u>	<u>24,490</u>
	256,236	215,539
<b>Less allocation of overhead to</b>		
Flower and Garden Show .....	<u>81,201</u>	<u>83,456</u>
	175,035	132,083
Horticulture magazine .....	—	8,747
Publications .....	30,001	24,775
Flower and Garden Show, including allocation of overhead .....	344,488	308,728
Preview Dinner .....	29,462	27,076
Library and Educational programs .....	16,397	15,599
Other activities .....	42,472	31,227
Bicentennial and public service projects .....	<u>61,798</u>	<u>7,478</u>
	<u>699,653</u>	<u>555,713</u>
Excess of income over expense .....	<u>\$ 26,589</u>	<u>\$ 36,332</u>

\* Reclassified to conform to current presentation.

The accompanying notes are an integral part of these financial statements.

**THE PENNSYLVANIA HORTICULTURAL SOCIETY  
NOTES TO FINANCIAL STATEMENTS**

**SIGNIFICANT ACCOUNTING POLICIES**

The financial statements are prepared on a modified cash basis. Marketable securities, furniture, equipment and improvements are carried at cost. Books and portraits are carried at 1971 ledger values, and subsequent additions have been charged to expense.

Life membership dues and unrestricted contributions are added to the Unrestricted Endowment Fund, which is a Board-designated fund without restriction on principal or income.

**INVESTMENTS**

	<i>Cost</i>	<i>Market value</i>
Operating Fund .....	\$174,850	\$171,930
Unrestricted Endowment Fund .....	516,648	435,919
	<u>\$691,498</u>	<u>\$607,849</u>

Operating Fund investments includes securities segregated to provide a funding of the reserve for Flower Show losses and public service projects.

In addition, the Society is the income beneficiary of a trust, under deed of Elizabeth Schaffer, comprised of securities with a market value of \$286,235 at June 30, 1974.

**FURNITURE, EQUIPMENT AND RELATED DEPRECIATION**

Depreciation of furniture and equipment is computed on the straight-line method over the estimated useful lives which range from five to ten years.

Improvements are amortized over the term of the building occupancy agreement.

Additions to furniture, equipment and improvements in the current year aggregated \$11,971.

**SPECIAL FUND—"10,000 TREES"**

Contributions to the Special Fund — "10,000 Trees", an ongoing campaign to raise funds for the planting of trees in Fairmount Park, administered by the Society, amounted to \$47,174 in the year ended June 30, 1974. The sum of \$24,206 was expended for tree planting. The balance of the Fund, \$24,141, at June 30, 1974, is deposited in a savings account.

**PENSION FUND**

The Society has established a pension plan for all full-time regular employees. The annual cost of the plan charged to Operating Fund expense, \$6,600, includes a provision for the amortization of past service liability of \$51,271 over a term of 40 years from 1970. Funds provided for the pension plan are invested by the Society in its Unrestricted Endowment Fund.

**BUILDING AGREEMENT**

The Society occupies facilities in Independence National Historical Park. The provisions of the agreement with the Department of Interior require that the Society assume responsibility for the routine operation, maintenance, and minor repairs to the interior of the building, the garden area and all related machinery and equipment. The Society is required to deposit \$100 per month in a fund for major repairs and replacements to buildings, equipment and grounds. The agreement terminates in 1983 and is renewable at the option of the Federal Government.

**THE PENNSYLVANIA HORTICULTURAL SOCIETY  
REPORT ON EXAMINATION  
YEAR ENDED JUNE 30, 1974**

The Council of The Pennsylvania Horticultural Society  
Philadelphia, Pennsylvania

We have examined the balance sheet of The Pennsylvania Horticultural Society at June 30, 1974, and the related statement of Operating Fund income for the year then ended. Our examination was made in accordance with generally accepted auditing standards, and accordingly included such tests of the accounting records and such other auditing procedures as we considered necessary in the circumstances.

The financial statements are prepared on a modified cash basis, in that items of income and expense (except for depreciation) are recorded as received and paid. Preparation of the financial

statements on the accrual basis would require that a deferred credit of approximately \$33,000 for membership dues paid in advance be shown on the balance sheet. Because of inclusion of dues applicable to prior periods in the statement of Operating Fund income, there would be no material change in that statement.

In our opinion, such financial statements present fairly the financial position of The Pennsylvania Horticultural Society at June 30, 1974, on a modified cash basis, and the Operating Fund income (cash basis) for the year then ended, on a basis consistent with that of the preceding year.

Main LaFrentz & Co.  
Certified Public Accountants  
Philadelphia, Pennsylvania  
August 9, 1974

## CONTRIBUTIONS

### CONTRIBUTIONS — 1974

Arcadia Foundation  
Mrs. F. B. E. Arnold  
Frederic L. Ballard  
Pearl L. Barol  
Mrs. Miller F. Barrick  
Mr. and Mrs. John C. Bennett  
Mrs. Victor R. Bieber  
Mrs. Thomas Boyd  
Mrs. Henry W. Breyer  
Mrs. Charles S. Bromley, Jr.  
Mr. and Mrs. Henry I. Brown, Jr.  
Mrs. Elmer M. Buckey  
Mr. and Mrs. Orville H. Bullitt  
Gladys Bulmer  
Laura Bulmer  
Henry T. Bush, Jr.  
Mary Calwell  
Mr. and Mrs. H. Kurtz Canby  
Ebba Carlson  
Mrs. Stephen P. Caspar  
Mr. and Mrs. Benjamin Coates  
Mrs. Warren S. P. Combs  
Mrs. Walter J. Cowan, Jr.  
Emma A. Crowder  
Mr. and Mrs. Harry Dannenbaum  
Ellen Combs Davis  
Mrs. Irving M. Day  
Mrs. Howard R. Detweiler  
Mr. and Mrs. Edward A. Doelp  
Mr. and Mrs. H. K. Dugdale, Jr.  
Mr. and Mrs. Irene du Pont, Jr.  
Mrs. Irvin R. Edgcomb  
Mrs. John H. Fassitt  
Rachel Fittler  
Frank Foster, Jr.  
Mrs. Edward J. Garra  
Mrs. A. O. Geertz  
Mr. and Mrs. Courtland S. Gross  
Mr. and Mrs. Robert M. Hewes, 3rd  
Mrs. Harvey N. Houser  
Mrs. Walter K. Howard  
Anne C. Ingersoll  
Mr. and Mrs. Orton P. Jackson  
Nancy James  
Horace F. Janney  
Mrs. James Joseph  
Henry B. Keep  
Mrs. Sidney Keith  
Mrs. Frank K. Kelemen  
Mrs. Wilson Kip  
Mrs. Philip W. Kniskern  
Patricia Krygier  
Mrs. S. James Krygier  
Mrs. Leicester S. Lewis  
Mr. and Mrs. Lindsley Loring, Jr.  
Lovett Foundation, Inc.  
Mr. and Mrs. Bayard M. Mallery  
Mariner Foundation  
Mrs. Briton Martin  
Henry P. McIlhenny  
Mrs. J. Gibson McIlvain, Jr.  
Mrs. Robert McLean  
Suzanne Merrick  
Middle Atlantic Regional Lily Group  
Mrs. H. Cameron Morris, Jr.  
Doris Nichols  
Mrs. Thomas R. O'Malley  
Mr. and Mrs. George S. Opp  
Mrs. Laird U. Park, Jr.  
The Philadelphia Foundation  
Mr. and Mrs. T. Morris Perot, 3rd  
Mrs. Joseph N. Pew, Jr.  
Mrs. Robert M. Price  
Mr. and Mrs. Bernard Rafferty  
Mrs. J. Pancoast Reath  
Helen M. Riddle  
Mrs. Walter S. Riley  
Gainor Roberts  
Adolph G. Rosengarten, Jr.  
Mrs. Richard P. Rosenau  
Robert Salgado  
Joan M. Salzer  
Mr. and Mrs. William C. Schultz, Jr.  
Mr. and Mrs. Walter M. Schwartz, Jr.  
Mrs. Robert Segrest  
Mr. and Mrs. S. P. Silberstein  
Mrs. Harry S. Sloat  
Mr. and Mrs. John J. Somerville  
Mrs. E. Spackman  
Mr. and Mrs. M. A. Stailey  
Mrs. H. Dixon Steinbright  
Mr. and Mrs. David Stockwell  
Mrs. F. J. Stokes, Jr.  
Mr. and Mrs. C. Thompson Stott  
Marian Stovicek  
Mrs. George Strawbridge  
Mrs. C. Newbold Taylor  
Mrs. Tom Taylor  
Mrs. John Lewis Thomas  
Mrs. Wirt L. Thompson, Jr.  
Mrs. Robert Toland

Anna G. Walker  
Mrs. Paul McC. Warner  
Warwick Foundation  
Mr. and Mrs. Lloyd P. Wells  
Eleanor M. Winter  
Mr. and Mrs. John R. Woolford  
Esther Wright  
Dr. and Mrs. Heber E. Yeagley

**1974 FLOWER & GARDEN SHOW  
PREVIEW DINNER,  
Saturday, March 9**

1680 Society members and guests  
enjoyed the dinner and preview.

**Committee**

Mrs. John A. Brown,  
*Chairwoman*  
Mrs. Elizabeth C. Bennett,  
*Co-chairwoman*  
Mrs. Malcolm B. Barlow  
Mrs. Anne Chew Barringer  
Mrs. James F. Bodine  
Mrs. Edward P. Bromley, Jr.  
Mrs. Morris R. Brownell, Jr.  
Mrs. Anthony A. Buford, Jr.  
Mrs. W. Blakeley Chandlee  
Mrs. George R. Clark  
Mrs. Tristram C. Colket  
Mrs. Edward E. Cullen, 3rd  
Mrs. William F. Delafield  
Mrs. Franklin d'Olier, Jr.  
Mrs. John T. Dorrance, Jr.  
Mrs. George W. Edwards, Jr.  
Mrs. Albert L. Fretz  
Mrs. Thomas Ginley  
Mrs. Thorp Van D. Goodfellow  
Mrs. Eugene G. Grace, Jr.  
Mrs. Bruce H. Greenfield  
Mrs. David M. Gwinn  
Mrs. Horace C. Jones  
Mrs. Morris Lloyd, Jr.  
Mrs. Frederick W. G. Peck  
Mrs. Andrew W. Porter, Jr.  
Mrs. Alfred W. Putnam  
Mrs. Bayard H. Roberts  
Mrs. Paul Rosenbaum  
Mrs. Edward Starr, 3rd  
Mrs. Robert E. L. Taylor  
Mrs. W. Cooper Willits

**Aides**

Mr. and Mrs. W. Thaches Brown  
Mr. and Mrs. Donald Carlson  
Mr. and Mrs. John Chew  
Mrs. Hope Fox Coates  
Mr. and Mrs. William Delafield  
Mrs. L. Roberts Detweiler  
Mr. and Mrs. Morris Disston  
Mr. and Mrs. William De Pee  
Mr. and Mrs. A. S. Frazier  
Mr. and Mrs. John Frazier  
Mr. and Mrs. Clark Groome  
Mr. and Mrs. Daniel Hutchinson  
Mr. and Mrs. George F. Ingersoll  
Mr. and Mrs. Robert Lansing  
Mr. and Mrs. Tobin V. Levy  
Mr. and Mrs. McKinley C. McAdoo  
Mr. and Mrs. Michael Newbold  
Mr. and Mrs. Steven Peake  
Mr. and Mrs. James Riepe  
Mrs. H. Martin Saunders  
Mr. and Mrs. Peter G. Stanley  
Mr. and Mrs. John H. Thacher, Jr.  
Mr. and Mrs. Charles A. Tull  
Mr. and Mrs. Christopher Willits

**1974 Philadelphia Flower  
& Garden Show Preview  
Dinner Patrons**

Ambassador and Mrs. Walter H.  
Annenberg  
Mr. and Mrs. John C. Atwood, Jr.  
Rear Admiral and Mrs. Theodore C.  
Aylward  
Mr. and Mrs. George B. Barnard  
Mrs. Thomas H. Bateman  
Mr. and Mrs. Winthrop H. Battles  
Mr. and Mrs. Edward F. Beatty  
Mrs. Elizabeth Chew Bennett  
Brigadier General and Mrs. Nicholas  
Biddle  
Mr. and Mrs. Frank G. Binswanger  
Mr. and Mrs. Alfred E. Bissell  
Mr. and Mrs. George P. Bissell, Jr.  
Dr. and Mrs. Daniel Blain  
Mr. and Mrs. J. Floyd Bloom  
Mr. and Mrs. James F. Bodine  
Mr. and Mrs. William Carson Bodine  
Mr. and Mrs. Irwin P. Boeshore

Mrs. Curtis Bok  
Mr. and Mrs. Willard S. Boothby, Jr.  
Mr. and Mrs. Nathaniel R. Bowditch  
Mr. and Mrs. Gordon A. Brandes  
Dr. and Mrs. Angus L. Brenner  
Mrs. C. Barton Brewster  
Mrs. Henry W. Breyer  
Mr. and Mrs. Neilson C. Bridger  
Mrs. Clarence C. Brinton  
Mr. and Mrs. Clinton H. Brown  
Mr. and Mrs. C. Stuart Brown  
Mr. and Mrs. John A. Brown  
Mr. and Mrs. Reginald M. Budd  
Dr. and Mrs. Dean E. Burget, Jr.  
Mr. and Mrs. David Burpee  
Mr. and Mrs. Alfred M. Campbell, Jr.  
Mrs. Edward C. Cassard  
Mrs. George S. Cavendish  
Mr. and Mrs. Sidney L. Chambers  
Mr. and Mrs. W. Blakeley Chandlee  
Mr. and Mrs. John T. Chew  
Mr. and Mrs. George R. Clark  
Mr. and Mrs. John R. Clark  
Mr. and Mrs. Theodore Clattenburg  
Mr. and Mrs. Tristram C. Colket, Jr.  
Mr. and Mrs. Fred Tenney Conger  
Mr. and Mrs. Lammot duPont  
Copeland  
Mrs. John D. Corbit, Jr.  
Mr. and Mrs. Alan Corson, Jr.  
Dr. and Mrs. A. Reynolds Crane  
Mr. and Mrs. Alan Crawford, Jr.  
Albert J. Crawford, Jr., Esq.  
Dr. and Mrs. Samuel L. Cresson  
Mr. and Mrs. Gordon Crouter  
Mr. and Mrs. Edward E. Cullen, 3rd  
Mr. and Mrs. P. L. Davidson  
Mrs. William L. Day  
Miss Marie B. DeBacker  
Mr. and Mrs. Antelo Devereux  
Mr. Charles D. Dickey  
Mr. and Mrs. Santo R. DiCondina  
Mr. and Mrs. Walter M. Diener  
Mr. and Mrs. John Hyland Dilks  
Mr. and Mrs. Fitz Eugene Dixon  
Mr. and Mrs. Reginald J. Doherty  
Mr. and Mrs. Franklin d'Olier, Jr.  
Mr. and Mrs. John T. Dorrance, Jr.  
Mr. and Mrs. Craig M. Drake  
Mr. and Mrs. Lawrence Drake  
Mr. and Mrs. William P. Drake  
Mr. and Mrs. Morris Duane

Mr. and Mrs. H.K. Dugdale, Jr.  
Mrs. Deborah E. duPont  
Mrs. H. B. duPont  
Mr. and Mrs. Pierre S. duPont  
Mr. and Mrs. C. Benson Dushane, Jr.  
Mrs. Ralph Earle  
Mr. and Mrs. Theodore E. Eckfeldt  
Dr. and Mrs. John W. Eiman  
Mr. and Mrs. William S. Einwechter  
Mr. and Mrs. James Eiseman  
Mrs. Van Horn Ely  
Mrs. McFadden Ewing  
Mr. and Mrs. Harold H. Fehr  
Dr. and Mrs. James J. Ferguson, Jr.  
Mr. and Mrs. Thomas Fisher, Jr.  
Mr. and Mrs. Joseph P. Flanagan  
Mr. and Mrs. William Innes Forbes, Jr.  
Mr. and Mrs. Henry E. Ford  
Mr. and Mrs. Robert S. Freeman  
Mr. and Mrs. Jack M. Friedland  
Dr. and Mrs. Alfred S. Frobese  
Mr. and Mrs. A. Paul Funkhouser  
Mr. and Mrs. George Wood Furness  
Mr. and Mrs. Elbert F. Garrett  
Mr. and Mrs. Robert S. Gawthrop, Jr.  
Mr. and Mrs. Kenneth W. Gemmill  
Mr. and Mrs. H. Lewis Gentsch, Jr.  
Dr. and Mrs. Thomas H. Ginley  
Mr. and Mrs. Peter Godfrey  
Mr. and Mrs. Herbert W. Goodall, Jr.  
Mr. and Mrs. Thorp Van D. Goodfellow  
Mr. and Mrs. Matthew  
R. Gordon-Clark  
Mrs. James E. Gowen  
Mr. and Mrs. Eugene G. Grace, Jr.  
Mr. and Mrs. Bruce H. Greenfield  
Mr. and Mrs. John Gribbel, 2nd  
Mr. and Mrs. Harry C. Groome, Jr.  
Mr. and Mrs. John T. Gurash  
Mr. and Mrs. David Gwinn  
Dr. and Mrs. F. Otto Haas  
Mr. and Mrs. John C. Haas  
Mr. and Mrs. Edgar R. Habberset  
Mr. and Mrs. George R. Haines  
Mr. and Mrs. H. Thomas Hallowell, Jr.  
Mr. and Mrs. Robert J. Harbison, 3rd  
Mr. and Mrs. Robert A. Hauslohner  
Mr. and Mrs. Gustave A. Heckscher, 2nd  
Mr. and Mrs. Maurice Heckscher  
Dr. and Mrs. George C. Henry  
Mr. and Mrs. Philip R. Hepburn  
Mr. and Mrs. Francis L. Hine

Dr. and Mrs. Joseph M. Hoeffel, Jr.  
 Mr. and Mrs. W. Charles Hogg, Jr.  
 Mr. Clement R. Hoopes  
 Mr. and Mrs. J. L. Humphrey  
 Mr. and Mrs. Barton H. Hunter  
 Mr. and Mrs. C. Jared Ingersoll  
 Mr. and Mrs. Horace C. Jones  
 Mr. and Mrs. Paul R. Kaiser  
 Mr. and Mrs. Lawrence Katz  
 Mr. and Mrs. Sidney Keith  
 Mr. and Mrs. Frank K. Keleman  
 Mr. and Mrs. Charles C. Kelsey  
 Mr. and Mrs. Henry B. King  
 Mr. and Mrs. John B. King  
 Mr. and Mrs. Wilson Kipp  
 Mr. and Mrs. John S. Kistler  
 Mr. and Mrs. Louis Klein  
 Mr. and Mrs. Philip Klein  
 Dr. and Mrs. John K. Knorr, 3rd  
 Dr. and Mrs. F. Peter Kohler  
 Dr. and Mrs. Samuel W. Lambert, Jr.  
 Dr. and Mrs. Edward L. Lame  
 Mrs. N. S. Lamont  
 Dr. and Mrs. H. Vernon Lapp  
 Dr. and Mrs. David G. Leach  
 Mr. and Mrs. Fairfax Leary, Jr.  
 Dr. and Mrs. Henry F. Lee  
 Mr. and Mrs. P. Blair Lee  
 Mr. and Mrs. Al Paul Lefton, Jr.  
 Mr. and Mrs. Clarence J. Lewis, Jr.  
 Mr. and Mrs. William Draper Lewis  
 Mr. and Mrs. W. Thacher Longstreth  
 Mr. and Mrs. William C. Lowry, 3rd  
 Mrs. A. Basil Lyons  
 Mr. and Mrs. Norman M. McAvoy  
 Mr. and Mrs. John R. McConnell  
 Mr. and Mrs. Robert C. McConnell  
 Judge and Mrs. John J. McDevitt, 3rd  
 Mr. and Mrs. Paul P. McFarland  
 Mr. and Mrs. Alan McIlvain  
 Dr. and Mrs. Paul A. McKim  
 Mr. and Mrs. Robert McLean, 3rd  
 Mr. and Mrs. Henry S. McNeil  
 Mr. and Mrs. John S. McQuade, Jr.  
 Mr. and Mrs. James A. McQuail, Jr.  
 Mr. and Mrs. John McShain  
 Mr. and Mrs. William F. MacDonald  
 Mr. and Mrs. William D. MacDowell  
 Mr. and Mrs. B. H. Mackey  
 Mr. and Mrs. Wistar H. MacLaren  
 Mr. and Mrs. Edward S. Madara  
 Mrs. Crawford C. Madeira  
 Mr. and Mrs. Edward W. Madeira, Jr.  
 Mr. and Mrs. John Markle, 2nd  
 Mr. and Mrs. John P. Mason  
 Mr. and Mrs. William H. Megary  
 Mr. and Mrs. Edwin R. Metcalf  
 Mr. and Mrs. William H. Meyle, Jr.  
 Mr. and Mrs. John C. Miller  
 Mr. and Mrs. Henry D. Mirick  
 Mr. and Mrs. James F. Mitchell, Jr.  
 Mr. and Mrs. Michael C. Mitchell  
 Mrs. Randall Morgan  
 Mr. and Mrs. Walter L. Morgan  
 Dr. and Mrs. Stuart Mudd  
 Mr. and Mrs. Louis Ely Mullin  
 Mr. and Mrs. W. B. Murphy  
 Dr. and Mrs. Hunter S. Neal  
 Dr. and Mrs. Joseph T. L. Nicholson  
 Mr. and Mrs. Bertram Lippincott  
 O'Neill  
 Mr. and Mrs. John R. Ott  
 Mr. and Mrs. Frederick W. G. Peck  
 Mr. and Mrs. J. Liddon Pennock, Jr.  
 Mr. and Mrs. Henry F. Perot  
 Mr. and Mrs. George T. Pew  
 Mr. and Mrs. Walter M. Phillips  
 Mr. and Mrs. Alfred W. Putnam  
 Mr. and Mrs. John Rahenkamp  
 Mr. and Mrs. Ernest L. Ransome, 3rd  
 Dr. Elizabeth Glenn Ravdin  
 Dr. and Mrs. J. Pancoast Reath  
 Mr. and Mrs. G. Ruhland Rebmann, Jr.  
 Mr. and Mrs. Paul C. Rebmann  
 Mrs. E. W. Reed  
 Mr. and Mrs. Eben Bent Reese  
 Dr. and Mrs. Richard O. Rex  
 Mr. and Mrs. Charles W. Riter  
 Mr. and Mrs. F. Markoe Rivinus  
 Mr. and Mrs. Edward C. Robbins  
 Mr. and Mrs. A. Addison Roberts  
 Mr. and Mrs. Algernon Roberts  
 Mr. and Mrs. Bayard H. Roberts  
 Mr. and Mrs. Wolcott W. Robinson  
 Mr. and Mrs. G. Frederick Roll  
 Mr. and Mrs. Paul Rosenbaum  
 Mr. and Mrs. Adolph G. Rosengarten,  
 Mr. and Mrs. Lessing J. Rosenwald  
 Mrs. Donald P. Ross  
 Mr. and Mrs. John Ross  
 Mr. and Mrs. Robert S. Ross  
 Mr. and Mrs. Karl F. Rugart, Sr.  
 Mr. and Mrs. Robert S. Ryan  
 Mr. and Mrs. Ernest C. Savage



Dr. and Mrs. Henry L. Savage  
 Judge and Mrs. Harold D. Saylor  
 Mr. and Mrs. Henry W. Scarborough  
 Mrs. Lewis C. Scheffey  
 Mr. and Mrs. Herbert F. Schiffer  
 Mr. and Mrs. Karl R. Schoettle  
 Mr. and Mrs. Donald A. Scott  
 Mr. and Mrs. Isadore M. Scott  
 Mr. and Mrs. Joseph C. Scott  
 Mr. and Mrs. Robert D. Scott  
 Mr. and Mrs. Frank E. Seymour  
 Mr. and Mrs. Philip P. Sharples  
 Virginia F. Shryock  
 Mr. and Mrs. Robert J. Siebert  
 Mr. and Mrs. James M. R. Sinkler  
 Mr. and Mrs. David B. Smith  
 Mrs. Edward B. Smith  
 Mrs. G. Giesau Smith  
 Mr. and Mrs. Lawrence M. C. Smith  
 Mr. and Mrs. Rayburn C. Smith, Jr.  
 Mr. and Mrs. C. Sodano  
 Mr. Boyd L. Spahr, Jr.  
 Dr. and Mrs. George E. Staehle  
 Mr. and Mrs. Edward Starr, 3rd  
 Mr. and Mrs. Alfred Steel  
 Mr. and Mrs. Geoffrey Stengel  
 Mr. and Mrs. Henry B. Stewart  
 Mrs. S. Emlen Stokes  
 Mr. and Mrs. Charles S. Strickler  
 Dr. and Mrs. Morris W. Stroud  
 Mr. and Mrs. Leon C. Sunstein, Jr.  
 Mr. and Mrs. Robert E. L. Taylor  
 Mr. and Mrs. Wyllys Terry  
 Mr. and Mrs. F. William Thacher, Jr.  
 Mr. and Mrs. John Hoover Thacher  
 Mrs. Thomas D. Thacher  
 Mrs. John B. Thayer  
 Mr. and Mrs. John B. Thayer  
 Mrs. R. Ellison Thompson  
 Mr. and Mrs. Robert P. Thompson  
 Henry A. Thouron  
 Mrs. E. Rommel Thudium  
 Mr. and Mrs. Louis R. Thun  
 Mr. and Mrs. Charles R. Tyson  
 Dr. and Mrs. Charles A. W. Uhle  
 Dr. and Mrs. Joseph B. VanderVeer  
 Mr. and Mrs. James H. Walker, Jr.  
 Mr. and Mrs. Clarence A. Warden, Jr.  
 Mr. and Mrs. Randolph H. Waterfield, Jr.  
 Mr. and Mrs. Henry Miller Watts  
 Mr. and Mrs. Channing Way, Jr.  
 Mr. and Mrs. Andrew S. Webb, Jr.  
 Dr. and Mrs. John C. Weber  
 Mrs. William G. Weisbrod  
 Harold C. Wessel  
 Dr. and Mrs. Franklin H. West  
 Mr. and Mrs. William White  
 Mrs. Daniel S. Whiteman  
 Mr. and Mrs. Ezra B. Whitman, Jr.  
 Mr. and Mr. John G. Williams  
 Mr. and Mrs. W. Cooper Willits  
 Mrs. George Searing Wilson  
 Mr. and Mrs. John F. Wilson  
 Dr. and Mrs. Robert N. Wilson  
 Mr. and Mrs. Curtin Winsor  
 Mrs. John Wintersteen  
 Mrs. L. Caspar Wister  
 Mrs. Huston Wolcott  
 Mr. and Mrs. Elias Wolf  
 Mr. and Mrs. Edward F. R. Wood, Jr.  
 Mr. and Mrs. Grahame Wood  
 Mr. and Mrs. Richard D. Wood  
 Mrs. George Woodward, Jr.  
 Mr. and Mrs. Granville Worrell, 2nd  
 Mrs. William Coxe Wright  
 Mrs. Wilson S. Yerger  
 Mr. and Mrs. Leonard A. Yerkes, Jr.  
 Dr. and Mrs. L. Wilbur Zimmerman

## MEMBERSHIP

June, 1973 5204 members

June, 1974 5388 members

The names and addresses of all current members are on file at the Society headquarters.

### NEW LIFE MEMBERS—1974

Maryrita Ambacher  
Santo R. DiCondina  
Mrs. Ernest C. Drew (Honorary)  
Lisa H. Freeman  
Richard A. Hauslohner  
Mrs. Lynwood R. Holmes  
(Honorary)  
Mrs. John H. Thacher  
Mrs. J. J. Willaman (Honorary)

### SUSTAINING MEMBERS— JUNE 1974

Francis Heed Adler  
Elizabeth Chew Bennett  
Mrs. Francis Boyer  
Mrs. Richard S. Cowan  
Mrs. Walter J. Cowan, Jr.  
Mr. and Mrs. Alan Crawford, Jr.  
Albert J. Crawford, Jr.  
Mrs. William L. Day  
Mrs. Franklin d'Olier, Jr.  
Mrs. H. B. duPont  
Mr. and Mrs. Edward J. Dwyer  
Charles H. Evoy, Jr.  
Herbert W. Goodall, Jr.  
Mrs. Eugene G. Grace  
Dr. and Mrs. F. Otto Haas  
Mrs. John C. Haas  
Mr. and Mrs. Richard E. Heckert  
Mrs. Eileen Hart Hinkson  
Mrs. Edward Hopkinson  
Mr. and Mrs. Walter K. Howard  
Mr. and Mrs. Horace C. Jones, II  
Mr. and Mrs. Paul E. Kelly  
Mrs. Louis Klein  
Mrs. George F. Kugler, Jr.  
Mr. and Mrs. Cuthbert H. Latta  
Mrs. Rodney M. Layton  
Mrs. A. Basil Lyons  
Mr. and Mrs. Alfred S. Martin  
Stephen McCormick  
Mrs. William H. Meyle, Jr.  
Mr. and Mrs. Lamont Moore

Mrs. Howard Petersen  
Mrs. Edward Piszek  
Mrs. Charles F. Powell  
Mrs. Alfred W. Putnam  
Mr. and Mrs. G. R. Rebmann, Jr.  
Mr. and Mrs. Paul Rosenbaum  
Mr. and Mrs. Adolph Rosengarten  
Robert S. Ryan  
Richard A. Sack  
Mrs. Henry Saltonstall  
Mrs. Lawrence Saunders  
Mrs. G. Giesau Smith  
Mrs. R. Ellison Thompson  
Mrs. Rush D. Touton  
Mr. and Mrs. Channing Way, Jr.  
Mrs. George Winchester  
Mrs. Elias Wolf  
Mrs. George Woodward, Jr.

### CONTRIBUTING MEMBERS— JUNE 1974

John F. Abel  
Mr. and Mrs. Herman A. Affel, Jr.  
Mrs. Earle M. Anderson  
Mrs. Howard F. Anderson  
Mrs. Stockton Andrews  
Mrs. F. M. Archer, Jr.  
Mrs. John C. Atwood, Jr.  
Henrietta E. Bachman  
Mrs. C. W. Balis, Jr.  
Mrs. J. Sellers Bancroft  
Mrs. Donald Byers Barrows  
Paul A. Bein  
Mrs. Ingersoll Benson  
Mrs. H. Lloyd Beyer, Jr.  
Mrs. Edward Bickford  
Eleanor A. Bliss  
Mr. and Mrs. James F. Bodine  
Mr. and Mrs. Irwin Boeshore  
Catherine M. Bohlen  
Mrs. Curtis Bok  
Gordon A. Brandes  
Mrs. George H. Brown, Jr.  
Mrs. Edward Browning, Jr.  
Orville H. Bullitt  
William C. Burleigh  
Mrs. McBee Butcher  
Mrs. J. Alfred Calhoun  
Mrs. Hans L. Carstensen, Jr.  
Mrs. Gordon H. Chambers

Mrs. Philip J. Chapman  
James Cheston  
Mrs. John R. Clark  
Theodore Clattenburg  
Mrs. Joseph R. Comly  
Mrs. Richard F. Corroon  
Mrs. Warren E. Crane  
Mr. and Mrs. Lynn L. Detweiler  
Mrs. Howard R. Detweiler  
Mrs. Antelo Devereux  
Mrs. Arthur Dewar  
Mrs. Lawrence Drake  
Mrs. H. K. Dugdale  
Mrs. Ervin R. Edgcomb  
Mrs. William S. Einwechter  
Mrs. William C. Elliott  
William C. Ellis  
Barbara Emerson  
Mrs. F. A. Evans  
Mr. and Mrs. Harold H. Fehr  
Mr. and Mrs. Morton H. Fetterolf, Jr.  
Mrs. R. S. Firestone  
Mrs. Herman Fischer  
Mr. and Mrs. William F. Fischer, Jr.  
Mrs. William M. Flook, Jr.  
Mr. and Mrs. Frederick L. Fuges  
Mrs. Stephen S. Gardner  
Mr. and Mrs. E. F. Garrett  
Arthur A. Gelston, Jr.  
Bruce H. Greenfield  
Mrs. John Gribbel, 2nd  
Miriam Groner  
Mr. and Mrs. Charles A. Gruber  
R. W. Haag  
Mr. and Mrs. William P. Haase  
Marguerite Hallowell  
Mrs. Thomas P. Harney  
R. L. Harper  
Mrs. Roberts Harrison  
Mrs. P. E. Hartenstein  
Mrs. W. Hendrickson, Jr.  
Mrs. Henry Lee Hudson  
Mrs. William M. Huggins  
Mrs. Walter Hughson  
N. Paul Introcaso  
Mrs. Charles S. Jacobs  
Mrs. Spencer L. Jones  
Mr. and Mrs. Frank K. Kelemen  
S. W. Lambert, Jr.  
N. S. Lamont  
Robert Langsfeld  
Mr. and Mrs. Daniel M. Layman

Mr. and Mrs. John Leake  
Dr. and Mrs. William M. Lemmon  
Mrs. Howard C. Leopold  
Alice A. Lineman  
Mrs. William F. Lotz, Jr.  
Mrs. Ford R. Lowdermilk  
Mrs. Robert W. Lowry  
Mrs. W. C. Lowry, 3rd  
Mrs. B. H. Mackey  
Mr. and Mrs. Joseph Marano  
Mr. and Mrs. John Markle, 2nd  
Maria A. Marren  
Mrs. Henry N. Marsh  
Ruth C. Marshall  
W. H. Martin  
John P. Mason  
Mrs. John R. McConnell  
Mrs. Edward McLean  
Mrs. James L. McVey  
Mrs. William Megary  
Merry Gardens  
Mr. and Mrs. John A. Meyer  
Henry D. Mirick  
Mrs. Theodore H. Morris, 3rd  
Jason R. Nathan  
William P. Norris, Jr.  
Mr. and Mrs. Thomas R. O'Malley  
Mrs. Laird U. Park, Jr.  
Pauline T. Pease  
Alice M. Pennock  
Mr. and Mrs. G. Holmes Perkins  
Mrs. Ovid Petrescu  
Mrs. James E. Pew  
Mrs. Robert M. Price  
Mrs. B. Brown Pursell  
Lee M. Raden  
Mrs. Conyers Read  
Mr. and Mrs. Eben B. Reese  
Eleanor M. Reeves  
Monica Reynolds  
Mrs. Edward C. Robbins  
Charles Robertson  
Mrs. Conway Robertson  
George Robertson & Sons, Inc.  
Mrs. B. F. Roland  
Mrs. G. Frederick Roll  
Mr. and Mrs. Henry F. Rollman  
Eudora Roseman  
Mrs. Lessing J. Rosenwald  
Anne Rowland  
Eleanore M. Rumsey  
Mrs. Charles Rupp

Mr. and Mrs. Donald R. Saxton  
Mr. and Mrs. I. M. Scott  
Mrs. Robert D. Scott  
Mrs. Irving R. Segal  
Mr. and Mrs. Richard L. Seifert  
Mr. and Mrs. Frank E. Seymour  
Virginia F. Shryock  
Mrs. Walter W. Slocum  
Mr. and Mrs. William H. Smith  
Mrs. C. Randolph Snowden  
Boyd L. Spahr, Jr.  
Mrs. Fenn Stafford  
Mrs. Geoffrey Stengel  
Mrs. William B. Stephenson  
Mr. and Mrs. David A. Stevens  
Mrs. J. Stodgell Stokes  
Gustav H. Tafel, Jr.  
Mrs. Timothy R. Talbot  
Mrs. C. Newbold Taylor  
Mrs. Robert E. L. Taylor  
Mr. and Mrs. Albert W. Terry, 3rd  
Mrs. Sydney Thayer  
Mrs. Edmund Thelen  
Mrs. Clarence Tolan, Jr.  
Mary L. Tower  
Mrs. F. Ross Valentine  
Mrs. S. N. Van Trump, Jr.  
Vosters Nurseries & Greenhouses  
Mrs. E. Perot Walker  
Mrs. Philip Wallis  
Mrs. H. L. Walters  
Mr. Stanley F. Ward  
Mrs. Clarence A. Warden, Jr.  
Mrs. Charles J. Webb, 2nd  
Mrs. Maurice A. Webster  
Colonel & Mrs. Walter D. Weikel  
Mrs. Daniel S. Whiteman  
Mr. George W. Wilkins  
Mrs. Jonathan W. Williams  
Mrs. George Searing Wilson  
Eleanor M. Winter  
Mrs. Francis C. Wood  
Mrs. George S. Worth  
Mrs. Richard Worth  
Mrs. Clarence Z. Wurts  
Dr. & Mrs. H. E. Yeagley  
Mrs. Richard N. Young



Custodian Benjamin Johnson mows the grass in the Society's apple and pear orchard.

## OTHER ACTIVITIES

### In addition to routine duties

Staff members served as judges at four flower shows and city block competitions.

Four staff members staged their own exhibits in the Philadelphia Flower & Garden Show and the Harvest Show.

The Society participated in Super Sunday, the Wissahickon Watershed Conservation Fair, the Rittenhouse Square Flower Market and Festival '74.

## STAFF MEMBERS ATTENDED OR PARTICIPATED IN MEETINGS OF THE FOLLOWING ORGANIZATIONS:

American Association of Botanical Gardens & Arboreta\*  
American Bonsai Society\*  
American Horticultural Congress  
American Horticultural Society\*  
John Bartram Association\*

Council on Botanical & Horticultural Libraries\*  
Craft Advisory Committee, Walter Biddle Saul High School of Agricultural Sciences\*  
Delaware Valley Chapter, American Rock Garden Society\*  
Earth Congress, Executive Council\*  
Garden Writers Association of America  
Grantsmanship Center  
Greater Philadelphia Cultural Alliance\*  
Gypsy Moth Task Force, Fairmount Park Commission\*  
Lincoln High School Horticulture Curriculum, Advisory Committee\*  
Mayor's Gateway Committee\*  
Middle Atlantic Regional Lily Group  
National Council for Therapy and Rehabilitation through Horticulture  
Neighborhood Gardens Association\*  
New York University Medical Center, Department of Rehabilitation Medicine—Horticultural Workshop  
Pen-Del Chapter, International Shade Tree Conference  
Pennsylvania Bonsai Society  
Pennsylvania Conference on Aging  
Pennsylvania Environmental Conference  
Pennsylvania Environmental Council\*  
Pennsylvania Nurserymen's Association  
Pennsylvania Parks and Recreation Conference  
Pennsylvania Roadside Council\*  
Philadelphia Chapter,  
American Rhododendron Society  
Philadelphia Chapter, Indoor Light Gardening Society  
Philadelphia Public Relations Association  
Philadelphia '76, Environmental Advisory Council\*  
Philadelphia '76, Women's Advisory Commission  
Society of Professional Journalists  
Women for the Bicentennial  
Women in Communications

\*Served on governing body

## **ORGANIZATIONS WHICH MET AT PHS HEADQUARTERS ONCE OR MORE DURING 1974**

City Department of Recreation,  
Neighborhood Park Program  
Earth Congress  
Four Counties Garden Club  
Herb Society of America  
    Philadelphia Unit  
Horticultural Curriculum Committee,  
    Philadelphia Schools  
John Bartram Association  
Junior League Garden Club  
Middle Atlantic Regional Lily Group  
Neighborhood Garden Association  
Northeast Region, American Orchid  
    Society  
Older Adult Center, Einstein Hospital  
    Southern Division  
Pennsylvania Bonsai Society  
Philadelphia Chapter, American  
    Rhododendron Society  
Philadelphia Chapter, Garden Club of  
    America  
Philadelphia Rose Society  
Philadelphia Society for Promoting  
    Agriculture  
Philadelphia Tourist Bureau  
    (Guides Orientation)

## **MISCELLANY**

14,649 people came to the Society's  
    headquarters  
29,004 people telephoned the Society  
27,086 pieces of mail were received by  
    the Society  
3,367 meals were served at the Society  
More than 5,000 horticultural inquiries  
    were answered.



## PHS STAFF

Ernesta D. Ballard  
*President*

James P. McCarvill  
*Flower & Garden Show Manager*

George C. Sinkler  
*Assistant to the President*

Jean Byrne  
*Editor*

Julie Morris  
*Horticultural Librarian*

F. Evelyn Hett  
*Flower Show Secretary*

Edward L. Lindemann  
*Horticulturist*

Noreen McCoy  
*Members Activities Coordinator*

Patricia M. Cain  
*Administrative Assistant*

Rick Fredette  
*Educational Coordinator*

Theodora Welgoss  
*Bicentennial Projects Director*

Honora Wesley-Burke  
*Book Restorer*

Charlotte L. Archer  
*Library Assistant*

Dianna Bonham  
*Library Assistant*

Frances Sinclair  
*Cataloger*

Grace M. Cole  
*Membership Secretary*

Kathleen M. Upham  
*Secretary*

Marie Rodia  
*Secretary*

Carol Lindemann  
*Secretary*

Winnie Ford  
*Receptionist-Typist*

Benjamin Johnson  
*Custodian*

Mary Williams  
*Housekeeper*



# THE PENNSYLVANIA HORTICULTURAL SOCIETY

## YEARBOOK 1975





# YEARBOOK

July 1, 1974 — June 30, 1975



The Pennsylvania Horticultural Society  
Independence National Historical Park  
325 Walnut Street  
Philadelphia, Pennsylvania 19106  
(215) WA 2-4801

## Contents

Chairperson's Letter	3
President's Letter	4
Administration	6
Members Activities	8
Community Activities	10
10,000 Trees	15
Flower Shows	15
Headquarters Exhibits and Shows	18
Awards	19
Services	22
Contributions	24
Preview Dinner	24
Financial Report	25
Membership	29
Other Activities	29



## **From the Chairperson**

Anyway you look at it, the Pennsylvania Horticultural Society's 148th year was a fruitful one.

Membership continued to grow. Activities increased markedly at our headquarters where we received an unprecedented number of visitors. The scope of our community activities program, a most important public service, was expanded.

And, in its 10th year of sponsorship by PHS, the Philadelphia Flower & Garden Show once again drew record-breaking crowds as well as the acclaim of knowledgeable horticulturists from many parts of the country.

Furthermore, our financial position at year's end was very strong indeed. This healthy condition was the result, in large part, of the success of the Flower & Garden Show and of our annual preview dinner.

These two events are outstanding examples of the effective teamwork between the PHS staff and member volunteers.

The teamwork, I believe, is our greatest single strength. Backed by our sound resources, it makes it possible for the Society to plan and implement its wide variety of soundly based programs designed to meet the increasing horticultural interests of the Delaware Valley.

On behalf of the Executive Council, I offer a truly sincere "thank you" to the staff and volunteers for their fruitful work in support of PHS.

In closing, I urge you to read with care the pages that follow. There you will find in brief detail reports on all of the Society's diverse activities. They make worthwhile reading.

Herbert W. Goodall, Jr.  
Chairperson

## From the President

At PHS, we march to the rhythms of several different years. The program year, beginning in September; the calendar year, on which our memberships are based; the Flower Show year, which begins as each show ends; the gardening year, which arrives with the vernal equinox, and finally, the fiscal year — July 1 through June 30. This Yearbook records the things that happened in fiscal 1975.

It has been a good year. We have been caught up in the mounting excitement of the bicentennial and are proud of the contributions our Society is making:

Our bicentennial film, "How Long Is Always — A Story of Trees," was completed on schedule at the end of June and will be shown without charge throughout the Philadelphia area during 1976. The producer, Brian Kellman, deserves great credit, and we are confident the film will be recognized nationally as well as locally.

10,000 Trees for Philadelphia's parks has reached the halfway mark, and we have every reason to expect that it will meet its goal. Details appear on page 15.

To help other groups and individuals work toward the bicentennial goal of greening Philadelphia, we published *The Philadelphia Area Green Pages*, a 77-page handbook of information for gardeners in and near the City. PHS members and staff were responsible for the writing; Anthony Hillman drew the hilarious illustrations, and the editing and production was done by George Borowsky. I hope every member has a copy.

During its first year on the road, the PHS Gardenmobile played an important role in our community activities. First suggested by the late R. Gwynne Stout during his presidency in the early 1960s, the Gardenmobile has become the personification of the Society for gardeners all over the city.

In the fall and winter, the brightly painted step-van carried the PHS training course for teachers to five different schools. In the spring, equipped with peat moss, fertilizer, tools, seeds and plants, the Gardenmobile brought assistance and encouragement to 33 community vegetable gardens in the inner city, delivering everything from informational bulletins to stakes, markers, fencing, and insecticides as needed. In addition, the Gardenmobile, with its own library, appeared at Super Sunday, the Philadelphia Festival, the Philadelphia Flower & Garden Show, and the Annual Clean-Up Day Parade — carrying free plant clinics to the public.

The horticultural curriculum guide *Indoor Gardening in the Classroom*, developed by the PHS staff, was published in October, and served as the basis of our service training program in the Philadelphia public school system. Designed for upper elementary and middle school classes, the 150-page guide has been praised by educators and horticulturists throughout the country.



When I am asked what the Pennsylvania Horticultural Society does, I usually control the urge to give a two hour answer and say, simply, "We collect and disseminate horticultural information." The range of our information service is broad. We provide the best horticultural library in this region. We publish the *Green Scene*, which continues to build an impressive file of fan mail. We run the spring Philadelphia Flower & Garden Show — the finest in the country — and the Harvest Show — of equal excellence. We make our resources available to other horticultural and gardening groups. Perhaps most important, we have assembled a staff of knowledgeable and helpful horti-

culturists to answer the questions that pour into our mailbox and our telephone — more than 6000 of them in fiscal 1975.

There is a tremendous interest in horticulture and gardening today, and a tremendous need for the programs we provide. The people whose names appear in this yearbook, in our Flower Show programs, on our Preview Dinner invitation and in the *Green Scene* and the PHS News, by their unstinting collaboration and generous financial support have made our programs possible.

Ernesta D. Ballard  
President

# ADMINISTRATION

## Executive Council

Herbert W. Goodall, Jr.,  
Chairperson  
L. Wilbur Zimmerman,  
Vice-Chairperson  
Robert S. Ryan,  
Vice-Chairperson  
Ernesta D. Ballard,  
President  
Alan Crawford, Jr.,  
Treasurer  
James P. McCarvill,  
Secretary  
William C. Burleigh  
Frederic W. Clark  
George R. Clark  
Mrs. John R. Clark  
Barbara H. Emerson  
Mrs. Eugene G. Grace  
Mrs. Walter K. Putnam  
Mrs. Paul E. Kelly  
John S. Kistler  
Mrs. Adolphus Lewis, Sr.  
Richard W. Lighty  
Mrs. John D. Lohmeyer  
William D. MacDowell  
Henry D. Mirick  
Robert E. Montgomery  
Craig S. Oliver  
J. Liddon Pennock, Jr.  
Mrs. Alfred W. Putnam  
Henry H. Reichner, Jr.  
Adolph G. Rosengarten, Jr.  
Bradshaw Snipes  
John E. Strong  
Mrs. Morris W. Stroud, 3rd  
J. Franklin Styer  
Mrs. S. Newbold van Trump, Jr.  
Mrs. E. Perot Walker  
Mrs. John G. Williams  
Esther J. Winters  
Minturn T. Wright, 3rd

The Chairperson and President are  
*ex officio* members of all committees.

## Executive Committee

Herbert W. Goodall, Jr.,  
Chairperson  
Alan Crawford, Jr.  
Mrs. Paul E. Kelly  
Lee M. Raden  
Robert S. Ryan  
Mrs. John G. Williams  
L. Wilbur Zimmerman

## Nominating Committee

Mrs. Eugene G. Grace,  
Chairperson  
William C. Burleigh  
Alan Crawford, Jr.  
Mrs. John D. Lohmeyer  
Henry H. Reichner, Jr.  
L. Wilbur Zimmerman

## Investment Committee

Alan Crawford, Jr.,  
Chairperson  
William C. Burleigh  
George R. Clark  
Minturn T. Wright, 3rd

## Personnel Committee

Alan Crawford, Jr.  
Mrs. Paul E. Kelly  
Robert S. Ryan





PHS members working together.

# MEMBERS ACTIVITIES

## Committee

George R. Clark,  
Chairperson  
Mrs. Walter K. Howard  
John S. Kistler  
Mrs. John D. Lohmeyer  
Robert E. Montgomery  
Mrs. Morris W. Stroud, 3rd

The Society offered members 14 lectures and symposia from September through April, eight courses & workshops in the fall and winter, two field trips in summer, fall, and spring, and garden visits in July 1974, April and June of 1975. Three of the lectures were co-sponsored with the Morris Arboretum and two PHS workshops were held at the Schuylkill Valley Nature Center; all other lectures and courses were at PHS. Six special meetings to introduce PHS members to plant specialties were conducted by plant societies; many other plant society meetings were open to interested members. A three-day trip for garden visiting on Long Island was set up; a two day trip went to Long Beach Island and the Pine Barrens. The garden visits were exceedingly popular, all field trips and workshops were fully subscribed, and the lectures were well attended.

Special events for members were the plant distribution and Harvest Show preview following the annual meeting in September, the Christmas Show Open House following the Candlelight Stroll in December, the spring Flower & Garden Show members preview, the Society Hill Tour Open House, and the third annual members evening at the Philadelphia Zoo.

## Garden Visits

### 1974 July Long Island

Mr. & Mrs. Robert S. Benepe  
Mr. & Mrs. Franklin d'Olier, Jr.  
Mr. & Mrs. Harold F. Johnson  
Mr. & Mrs. William K. Laughlin  
Mr. & Mrs. James N. Wallace  
Mr. & Mrs. Charles D. Webster  
Mr. & Mrs. Elwood Whitney

### April 1975 Main Line

Dr. & Mrs. Theodore Cohen

### June 1975 Society Hill

Mr. & Mrs. Kenneth Cundy  
Dr. & Mrs. Palmer H. Fitcher  
Dr. & Mrs. Robert Gill  
Mr. & Mrs. Alan Halpern  
Mr. & Mrs. Howard Kellogg  
Adolph de Roy Mark  
Mr. & Mrs. Theodore T. Newbold  
Powel House  
Mr. & Mrs. G. Frederick Roll  
Mr. & Mrs. Alfred Zernik

### June 1975 Chestnut Hill

Ernesta & Frederic Ballard  
Mr. & Mrs. Elias Wolf



# COMMUNITY ACTIVITIES

## School Program

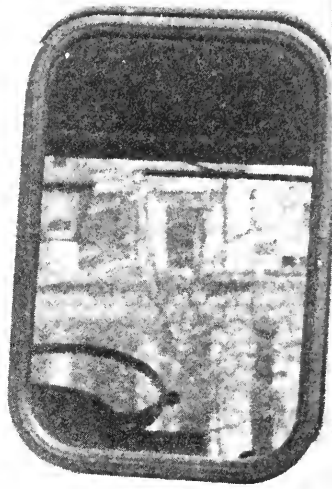
Based on last year's successful efforts, the Society expanded its staff development training program to accommodate 300 Philadelphia School District teachers, thus reaching almost 10,000 area children. Eight two-hour monthly classes were conducted at five regional locations in the city. Using the newly developed horticultural curriculum guide, *Indoor Gardening in the Classroom*, as the basis for the course, the PHS staff presented an intensive program on house plant culture and care, trees, bulbs, flowers, and vegetables. Teachers tested classroom experiments and performed horticultural projects at each session before returning with their materials to the more than 125 schools that were represented. In addition, over 70 schools conducted successful campaigns for the "10,000 Trees" program, which concluded the school year with four planting ceremonies in Children's Groves in the park system.

The program was again conducted with the cooperation of the Office of Science Education. Throughout the year, it was repeatedly endorsed by officials, and in May the School District accredited the course, making it part of the in-service program for the coming year.



Gardenmobile at Community site. Young gardeners receive vegetable seedlings in containers for early start on spring planting.

Staff members unload materials from PHS Gardenmobile.



Ask us about  
House plants  
Vegetables  
Fruit  
Window boxes  
Straws  
Trees

## **Community Vegetable Gardens Program**

### **1974 Program**

Cooperating with the City Department of Recreation's Neighborhood Parks Program and the Bell Telephone Company, PHS assisted ten community groups throughout the city to "farm" vacant lots and to produce a bountiful fall harvest. The value of the program can be measured both economically and socially. The strengthening of community ties and an increased awareness of the neighborhood environment were as evident as the baskets of tomatoes, peppers and corn grown on these city plots.

### **1975 Program**

Encouraged by these results and to further the "greening" of the city, the Society quadrupled its program coverage for 1975. Twenty-seven new groups met with the staff early in the year to plan their respective gardens and to receive instruction. With the help of a rototiller purchased for the program by the Philadelphia Committee of the Garden Club of America, all the sites were prepared and almost 1000 residents had planted by mid-June.

## **Parkway Program**

The horticultural staff conducted "Green In the City", a class in urban horticulture, for the Parkway Program of the School District of Philadelphia. This was the fifth year the Society was involved in the alternative school program. The ten-week course covered many aspects of growing plants in the city from the amateur's and professional's points of view. Classes included a walking tour of the Wissahickon with Frederic L. Ballard; visits to the architectural design firm of Semanko-Bobrowicz; a trip to Longwood Gardens and the Morris Arboretum; and lectures by members of the PHS Staff. Several students in the class participated in the spring Flower & Garden Show as members of the PHS work crew.

## **Horticultural Therapy**

PHS developed an all-day horticultural therapy symposium for interested community leaders. The 85 people who attended, represented the medical profession, the federal government, institutional administration and volunteer services.

Volunteers and professionals exchanged information and ideas. Many of the conferees sufficiently valued their contacts with this new network to commit themselves to the recently formed National Council for Therapy and Rehabilitation through Horticulture, an organization that PHS has been involved with since its founding.

## **Free Plant Clinics**

More than 1,000 people participated in the monthly Free Plant Clinics held at the Society's Headquarters on eight Sundays during the year. Visitors to the clinics brought sick plants and a multitude of questions that were handled by the horticultural staff.





**BICENTENNIAL MOON TREE**

SIGMUND PLANTED MAY 6, 1975  
FROM SEED CARRIED TO THE MOON  
BY ASTRONAUT STUART NEVILL  
ON APOLLO XIV, FEBRUARY 1971

NATIONAL AERONAUTICS & SPACE ADMINISTRATION  
FOREST SERVICE USDA



# 10,000 TREES

## Committee

C. Stuart Brown  
Chairperson

Mrs. John W. Appel  
Mrs. Paul Betancourt, Jr.  
Frederic W. Clark  
Nancy Clark  
Lawrence Formica  
Mrs. Eugene G. Grace  
Mrs. Adolphus Lewis, Sr.  
Mrs. David Linforth  
John J. Morley  
Mary Clay Reed  
Henry H. Reichner, Jr.  
Mrs. Richard T. Saler  
Mrs. Walter Smedley  
Bradshaw Snipes  
Kurt A. Solmssen  
John E. Strong  
Mrs. Morris W. Stroud, 3rd

More than \$83,000 was collected during the program's second fiscal year. Over 3,000 trees were planted in 19 city parks in the same time period. Collected by year-end: approximately \$164,000; planted 4500 trees in 31 city parks.

# FLOWER SHOWS

## 1975 Philadelphia Flower & Garden Show

**Philadelphia Civic Center**  
March 9 through March 16  
Attendance: 180,000

Thirty-six thousand square feet were added to the exhibit space for the 1975 Show. The new total footage of 180,000 square feet allowed better distribution of exhibits, better traffic flow and more room for resting and eating. Despite a record attendance, overcrowding experienced in recent shows was virtually eliminated.

Special features of the show were an 8,000 square foot park-like entrance feature with nearly 15,000 bulbs in bloom, a timely 5,600 square foot year-round vegetable garden and, for the first time anywhere, the use of a computer to answer gardening questions.

There were 77 major exhibits, 158 entries in the flower arranging classes and 828 entries in the horticultural classes.

## Flower & Garden Show Committee

L. Wilbur Zimmerman  
Chairperson  
Mrs. Eugene G. Grace  
Vice-Chairperson  
Mrs. Francis Ballard  
Mrs. Charles E. Barnes, Jr.  
Mrs. Charles Becker, Jr.



Mrs. Norman S. Bemis  
Mrs. Nathaniel Bowditch  
Mrs. William Buchanan  
George R. Clark  
Mrs. H. F. Coates  
Mrs. Mercade A. Cramer, Jr.  
Mrs. Edward E. Cullen, 3rd  
Mrs. G. Morris Dorrance  
Mrs. Hubert P. Earle  
Mrs. John Eiman  
Herbert W. Goodall, Jr.  
Mrs. Thomas M. Hyndman  
Mrs. Henry B. King  
Mrs. John D. Lohmeyer  
William D. MacDowell  
Henry D. Mirick  
J. Liddon Pennock, Jr.  
Mrs. Alfred W. Putnam  
Mrs. C. Madison Riley  
Mrs. Edward C. Rorer  
Mrs. George W. Schelling  
Owen Schmidt  
Mrs. J. Brooks Semple  
J. Franklin Styer  
Mrs. William Ward, 4th  
Mrs. P. L. Welsh  
Mrs. John G. Williams

## 1974 Harvest Show

**Memorial Hall, Fairmount Park  
Saturday & Sunday, September 28&29**

Each year the Harvest Show draws a return group of loyal and committed visitors, as well as substantial numbers of new visitors. It is a show whose popularity has been built up by word-of-mouth. Its hominess and intimacy suits the person who enjoys examining up close the lovingly polished fruits and vegetables. Its spectrum of colors, ranging from the muted velvety tones of dahlias to the spectacular reds of tomatoes to the yellows of corn to the neutral tones of grain, compare favorably with the brilliance of spring colors. The variety of textures and shapes of the greenhouse plants are an inspiration to those looking for challenges.

Philadelphia Flower & Garden Show



Nothing is forced for this Show. It is the pleasant end of summer's work.

The exhibitors cannot be easily categorized: they encompass both the young and old; those of modest means and the affluent, and the highly skilled as well as the novice.

#### **Committee**

Mrs. William Balderston,  
Chairperson  
Mrs. William E. Detweiler  
Vice-Chairperson  
Mrs. Sydney J. Barnes  
Wilbur Beck  
Mrs. Preston D. Carter  
Mrs. Allen Corson, Jr.  
Mrs. M. A. Cramer, Jr.  
Mrs. Robert N. Drake  
Mrs. William Eckfeldt  
Mrs. Thomas B. Everist  
Mrs. Morton Fellheimer  
Mrs. Francis L. Harrigan  
Mrs. George A. Hewitt

Mrs. Robert H. Hilderbrand  
Mrs. Huntingdon Jackson  
Mrs. William E. Lappin  
Marie Louise C. Lee  
Mrs. Melvin Lucas  
Erich Meitzner  
Mrs. John L. Metzger  
Mrs. Ward C. Miller  
Mrs. Clark R. Morris  
Mrs. Ernest Morton  
Mrs. Victor J. Roberts  
Patricia Sonneborn  
Mrs. Lyle R. Tanner  
Mrs. S. Newbold van Trump, Jr.  
Mrs. Rhoden E. Walls  
Mrs. Douglas K. Whipple

Harvest Show



# HEADQUARTERS EXHIBITS AND SHOWS

## Yuletide Show

December, 1974

### Committee

Mrs. L. Davis Jones

Chairperson

Doris Atkinson

Mrs. Thomas G. Brown

Mrs. Wilson B. Harkins, Jr.

Vice-Chairpersons

Mrs. John Brewer

Mrs. Edward Brinton

Mrs. Adolph Hirstius

Mrs. J. Preston Leavitt

Mrs. David Linforth

Mrs. Leonard W. Snyder

The number of people visiting the '74 Yuletide Show more than doubled over previous years. An enthusiastic Show committee undertook comprehensive research in the traditions of centuries crossing over into numerous cultures. Their exhibit surveyed the ages recreating designs from the pagan and early Christian eras through other periods: medieval, renaissance, reformation, colonial and Victorian right up through the 20th Century. The exhibitors used a broad variety of horticultural materials to dramatize these symbolic festivals. It was a rare opportunity to see so beautifully illustrated the historical progression of this fascinating holiday.



## Plant Society Shows

Pennsylvania Bonsai Society

Saturday and Sunday

November 2 and 3, 1974

29th Annual Rose Show of the

Philadelphia Rose Society

Saturday and Sunday

June 7 and 8

12th Annual Show of the Middle

Atlantic Regional Lily Group

Saturday and Sunday

July 12 and 13

## Monthly Exhibits in the Society Headquarters

### Exhibits Committee

Mrs. S. Newbold van Trump, Jr.,

Chairperson

Mrs. Norman S. Bemis

Mrs. Preston D. Carter

Mrs. Elmer Hartwick

Mrs. George A. Hewitt

Mrs. Milton Laden

Mrs. H. Vernon Lapp

Mrs. Edwin A. Peeples

Mrs. George A. Reed

Mrs. Victor J. Roberts

1974 July and August—Colonial  
Gardening Exhibit

September—Home of the Flyers

October—Harvest Show Highlights

November—Pennsylvania Women of  
Horticulture (authors)

1975 January—Indoor Light  
Gardening

February-March—Plant Photography

April—Samplings from the Spring  
Show

May—Plant Explorers

June—Plant Forms; Art Forms

# AWARDS

## Committee

J. Liddon Pennock, Jr.,  
Chairperson  
Mrs. John R. Clark  
Richard W. Lighty  
Mrs. Alfred W. Putnam  
Bradshaw Snipes  
J. Franklin Styer  
Mrs. S. Newbold van Trump, Jr.

## Distinguished Garden Awards

Mr. & Mrs. Robert S. Benepe  
Mr. & Mrs. William L. Collins  
Mr. & Mrs. Franklin d'Olier, Jr.  
Mr. & Mrs. H. Thomas Hallowell, Jr.  
Mr. & Mrs. Harold F. Johnson  
Mr. & Mrs. K. Laughlin  
Mr. & Mrs. James N. Wallace  
Mr. & Mrs. Charles D. Webster  
Mr. & Mrs. Elwood Whitney

**The 1974 Landscape Horticulture Awards** of the Greater Philadelphia Chamber of Commerce in Cooperation with the Pennsylvania Horticultural Society to:

Oxford Valley Mall  
Rohm & Haas Co.  
Federal Reserve Bank of Philadelphia  
Burlington Industries, Inc. Lees  
Division  
Friends Hospital  
The American College of Life  
Underwriters

**The 1974 PHS Horticultural Sweepstakes Trophy** for the accumulation of the greatest number of blue ribbons in the Horticultural Classes of the Philadelphia Flower & Garden Show and the Harvest Show to:

Nancy D. Kolb

**The 1975 PHS Horticultural Sweepstakes Trophy** for the accumulation of the greatest number of blue ribbons in the Horticultural Classes of the Philadelphia Flower & Garden Show and the Harvest Show to:

Mrs. Sidney Keith

**1975 PHS Annual Award to Outstanding Junior Horticulturist** in the Delaware Valley to:

Francine M. Rausch, First place  
Hugh Darlington, Second place

## Major Flower Show Awards

**1975 Philadelphia Flower & Garden Show**

**The Pennsylvania Horticultural Society Flower Show Award**

for the best in show in the following categories:

**Educational Exhibit**

W. Atlee Burpee Company

**Floral Exhibit**

Muehlmann's Greenhouses

**Landscape Exhibit**

Gale Nurseries

**Special Exhibit**

Pennsylvania Bonsai Society

**The Pennsylvania Horticultural Society Awards of Merit to:**

Allied Florists of Delaware Valley  
American Rhododendron Society

American Rock Garden Society

County Line Landscape Nursery

Delaware Valley College of

Science and Agriculture

De Wilde's Rhodo-Lake Nursery

Fairmount Park

Hansen Brothers Nurseries

Phila. Chapter, Indoor Light

Gardening Society

International Shade Tree

Conference

Judd's Hollylan Nurseries

Meadowbrook Farm

Middle Atlantic Carnation Growers

Pennsylvania Nurserymen's

Association

Philadelphia Area Daffodil Society

Philadelphia Cactus and

Succulent Society

Philadelphia Zoological Society

George Robertson & Sons, Inc.

Rosade Bonsai Studio

Roses, Inc.

Schuylkill Valley Nature Center

Cornelius J. Sikking

Southeastern Pennsylvania

Orchid Society

Star Roses

Vick's Wildgardens, Inc.

**The Pennsylvania Horticultural Society Horticultural Sweepstakes Trophy**

for the accumulation of the greatest number of points in the Horticultural Classes to:

Nancy D. Kolb

**The Pennsylvania Horticultural Society Room Award**

for the outstanding Blue Ribbon winner in the Room Classes to:

Country Gardeners

**The Pennsylvania Horticultural Society Table Award**

for the outstanding Blue Ribbon winner in the Table Classes to:

Providence Garden Club

**The Pennsylvania Horticultural Society Flower Arranging Sweepstakes Trophy**

to the individual accumulating the greatest number of points in the Arrangement Classes Section to:

Mrs. Harry C. Groome, Jr.

**The Pennsylvania Horticultural Society Club Sweepstakes Award**

for the accumulation of the greatest number of points in the Arrangement Classes Section to:

Four Counties Garden Club

**1974 Harvest Show**

**The Flower Show Award of the Pennsylvania Horticultural Society** for an exhibit of extraordinary merit, which stimulates an interest in horticulture to:

Bromeliophiles of Greater Philadelphia

**Horticultural Sweepstakes Award** to the individual winning the greatest number of Blue Ribbons in the Horticultural Section to:

Mrs. Lawrence Billau  
Frank C. Wuest

**The Sweepstakes Award Arrangement**

to the individual winning the greatest number of Blue Ribbons in the Arrangement Section to:

Mrs. John R. Larkin

**The Pennsylvania Horticultural Society Club Sweepstakes Award**

to the Club winning the greatest number of Blue Ribbons in the show to:

Trevoise Horticultural Society

**Presented at Other Flower Shows**

**The Pennsylvania Horticultural Society Medal to:**

Schools in Youth Exhibit at the Chicago Flower and Garden Show.

William A. Coolidge, Topsfield, Mass. at the New England Spring Garden and Flower Show.



# SERVICES

## Library

### Committee

Barbara H. Emerson,  
Chairperson  
Frederic W. Clark  
George R. Clark  
Bessie Greenawalt  
George M. Harding  
Marianna Merritt Hornor  
Kitty Hoopes Lapp  
Richard W. Lighty  
Lee Morris Raden  
Adolph G. Rosengarten, Jr.  
Elisabeth Woodburn

### Circulation

More than 6,000 books, journals and pamphlets circulated from the PHS Library this past year. In addition, 60 slide sets and films were also circulated. Members of the American Rock Garden Society borrowed 750 books as part of the PHS-ARGS library agreement.

### Friends of the Library

Friends of the PHS Library contributed \$4,300. Their contributions will go a long way to support the Library's Bicentennial project.

## Publications

The *Green Scene* was distributed more extensively this year than in the past: Frelinghuysen Arboretum and Horticultural Society of Maryland have arranged to receive the *Green Scene* for their entire membership by special arrangement with PHS and their governing boards. In addition, 11 institutions including plant stores, arboretums, nurseries and cultural institutions are selling the *Green Scene* at their sales counters.

## Gardens

### Garden Volunteers

Edward Doelp  
Jane Inverarity  
Helen Kaufman  
Miriam Kroungold  
Kitty Hoopes Lapp  
Marjorie Maurer  
Ann McPhail  
Virginia Parker  
C. J. Van Arsdall  
Polly Ann Van Arsdall  
Frances Vollmer  
Benjamin Wilson

Seldom during the past year has the 18th Century Garden been without at least one group of visitors; often the walks and gazebo were filled to capacity. The increased number of visitors combined with a frustrating growing season put a heavy load of work on the faithful group of garden volunteers. In drizzling rain and sweltering heat and humidity, the volunteers completed over 800 hours maintaining the gardens.

In addition to the 18th Century garden, the volunteers kept the Bishop White Garden at the corner of 3rd & Walnut and the vegetable and herb garden in the rear of the Society's headquarters in top form.





# CONTRIBUTIONS

# PREVIEW DINNER

## Major Contributors

The Arcadia Foundation  
Henrietta E. Bachman  
Mr. & Mrs. Lloyd Balderston  
Mr. & Mrs. John W. Batdorf  
Bell Telephone Company  
Mrs. V. R. Bieber  
Mrs. E. Billingslea  
Mr. & Mrs. John D. Briner  
Mrs. E. M. Buckley  
David Burpee  
Mr. & Mrs. J. Eiseman  
Mr. & Mrs. W.F. Fischer, Jr.  
Mr. & Mrs. E.L. Forstall  
Mrs. Jack M. Friedland  
Mr. & Mrs. Logan B. Gill  
Glenmede Trust Company  
Mrs. F. Woodson Hancock  
Mr. & Mrs. B.H. Hunter  
Mr. & Mrs. Orton P. Jackson  
Horace F. Janney  
Mr. & Mrs. C.L. Johnson  
Mr. & Mrs. Harry I. Lauer  
Mrs. Arthur Littleton  
The Mariner Foundation  
Mr. & Mrs. Wallace Martindale, Jr.  
Harriet T. Mitchell  
Mr. & Mrs. Elliston P. Morris  
Mrs. Thomas R. O'Malley  
Mr. & Mrs. George S. Opp  
Dr. & Mrs. Richard H. Peck  
The Philadelphia Foundation  
Clara B. Pitcher  
Elizabeth Glenn Ravdin  
Dr. & Mrs. J. Pancoast Reath  
Adolph G. Rosengarten, Jr.  
Mrs. George Otis Spencer  
Mrs. H.D. Steinbright  
Mrs. Thomas D. Thacher  
Mrs. & Mrs. Raymond A. Townley  
Warwick Foundation  
Mr. & Mrs. R. Chase Whitaker  
Eleanor M. Winter

## 1975 Flower & Garden Show, Preview Dinner, March 8, 1975

1,739 Society members and guests  
enjoyed the dinner and preview.

### Committee

Elizabeth Chew Bennett,  
Chairperson  
Mrs. James F. Bodine,  
Co-Chairperson  
Mrs. John K. Binswanger  
Mrs. John A. Brown  
Mrs. Morris Brownell, Jr.  
Mrs. George R. Clark  
George R. Clark  
Mrs. Edward E. Cullen, 3rd  
Edward E. Cullen, 3rd  
Mrs. Franklin d'Olier, Jr.  
Mrs. George W. Edwards, Jr.  
Mrs. Thomas H. Ginley  
Mrs. Thorp Van D. Goodfellow  
Mrs. Eugene G. Grace  
Mrs. Bruce H. Greenfield  
Quita W. Horan  
Mrs. Horace C. Jones  
Daniel Layman  
Mrs. Andrew W. Porter, Jr.  
Lee M. Raden  
Mrs. Bayard H. Roberts  
Mrs. Paul Rosenbaum  
Mrs. Edward Starr, 3rd  
Mrs. Geoffrey Stengel  
Mrs. Leon C. Sunstein, Jr.  
Mrs. John Hoover Thacher  
Mrs. W. Cooper Willits  
Mrs. Leonard A. Yerkes

In addition, 297 members donated \$100 or more to the 10,000 Trees program. Their names are on file in the Society offices and will be permanently recorded in Memorial Hall.

# FINANCIAL REPORT

## Treasurer's Comments

Your Society enjoyed another successful year and remains in excellent financial condition. Income rose sufficiently to enable the Society to cover public service projects and Bicentennial expenses without recourse to the special reserve funds established for these purposes, as reflected on our Balance Sheet below.

Respectfully,  
 Alan Crawford, Jr.  
 Treasurer

## The Pennsylvania Horticultural Society Balance Sheet June 30, 1975 and 1974

	1975			1974	
	Operating Fund	Endowment Funds		Total	
		Unrestricted	Restricted		Total
Cash (Savings accounts 1975 \$126,131 and 1974 \$38,085)	\$ 45,289	\$110,854	\$5,354	\$161,497	\$ 68,665
Marketable securities (market value 1975 \$632,986 and 1974 \$607,849)	219,434	428,664		648,098	691,498
Furniture, equipment and improvements	106,443			106,443	99,568
Accumulated depreciation and amortization	76,851			76,851	69,670
	29,592			29,592	29,898
Books and portraits	26,909			26,909	26,909
	<u>\$321,224</u>	<u>\$539,518</u>	<u>\$5,354</u>	<u>\$866,096</u>	<u>\$816,970</u>
<b>Liabilities</b>					
Sales tax payable	\$ 11			\$ 11	\$ —
Payroll taxes withheld					283
Special Fund — "10,000 Trees"	49,288			49,288	24,141
Pension Fund		\$ 62,950		62,950	23,200
Reserve for Flower Show losses and public service projects	195,000			195,000	170,000
Principal balance	76,925	476,568	\$5,354	558,847	599,346
	<u>\$321,224</u>	<u>\$539,518</u>	<u>\$5,354</u>	<u>\$866,096</u>	<u>\$816,970</u>

The accompanying notes are an integral part of these financial statements.

**The Pennsylvania Horticultural Society  
Statement of Operating Fund Revenue and Expenses  
for the Years Ended June 30, 1975 and 1974**

	<u>1975</u>	<u>1974</u>
<b>Revenue</b>		
Membership dues	\$ 83,661	\$ 67,676
Invested funds and savings accounts	33,995	35,213
Schaffer Trust	16,237	17,883
Designated contributions	15,820	9,885
Flower & Garden Show	509,332	458,249
Preview Dinner	94,777	88,343
Fees and sales	60,279	34,437
Other activities	<u>10,967</u>	<u>14,556</u>
	<u>825,068</u>	<u>726,242</u>
<b>Expenses</b>		
Salaries	193,184	176,916
Other employee expenses	65,200	30,640
Building maintenance and utilities	17,398	13,510
Depreciation and amortization	7,182	6,348
Administrative supplies and expense	<u>36,230</u>	<u>28,822</u>
	319,194	256,236
Less allocation of overhead to Flower & Garden Show	<u>99,232</u>	<u>81,201</u>
	219,962	175,035
Publications	43,496	30,001
Flower & Garden Show, including allocation of overhead	404,708	344,488
Preview Dinner	35,721	29,462
Library and educational programs	20,819	16,397
Other activities	30,715	42,472
Bicentennial and public service projects	<u>67,622</u>	<u>61,798</u>
	<u>823,043</u>	<u>699,653</u>
Excess of revenue over expenses	<u>\$ 2,025</u>	<u>\$ 26,589</u>

The accompanying notes are an integral part of these financial statements.

**The Pennsylvania Horticultural Society  
Statement of Principal  
for the Years Ended June 30, 1975 and 1974**

	1975			1974	
	Operating Fund	Endowment Funds		Total	
		Unrestricted	Restricted	Total	
Balance, beginning of year	\$ 99,900	\$494,092	\$5,354	\$599,346	\$606,933
Excess of Operating Fund revenue over expenses	2,025			2,025	26,589
Transfer to Reserve for Flower Show losses and public service projects	(25,000)			(25,000)	(25,000)
Unrestricted contributions		16,575		16,575	17,462
Loss on sale of investments		(36,399)		(36,399)	(27,888)
Life membership dues		2,300		2,300	1,250
Balance, end of year	<u>\$ 76,925</u>	<u>\$476,568</u>	<u>\$5,354</u>	<u>\$558,847</u>	<u>\$599,346</u>

The accompanying notes are an integral part of these financial statements.

**The Pennsylvania Horticultural Society Notes to Financial Statements**

**Significant Accounting Policies**

The financial statements are prepared on a modified cash basis. Marketable securities, furniture, equipment and improvements are carried at cost. Books and portraits are carried at 1971 ledger values, and subsequent additions have been charged to expense.

Depreciation of furniture and equipment is computed on the straight-line method over the estimated useful lives which range from five to ten years. Improvements to buildings are amortized over the term of the building occupancy agreement.

Life membership dues and unrestricted contributions are added to the Unrestricted Endowment Fund, which is a Board-designated fund without restriction on principal or income.

**Investments**

Operating Fund assets include securities segregated to provide a funding of the reserve for Flower Show losses and public service projects.

In addition, the Society is the income beneficiary of a trust, under deed of Elizabeth Schaffer, comprised of securities with a market value of \$300,466 and \$286,235 at June 30, 1975 and 1974, respectively.

### **Special Fund — "10,000 Trees"**

Contributions to the Special Fund — "10,000 Trees", an ongoing campaign to raise funds for the planting of trees in Philadelphia parks, administered by the Society, amounted to \$83,134 and \$47,174 in the years ended June 30, 1975 and 1974, respectively. The sum of \$60,440 was expended for tree planting in 1975 and \$24,206 in 1974. The balance of the Fund, \$49,288 and \$24,141, at June 30, 1975 and 1974, respectively, was deposited in a savings account, the interest on which was added to the Fund.

### **Pension Fund**

The Society has an unfunded pension plan covering all full-time employees. The amounts charged to operations, \$39,750 for 1975 and \$6,600 for 1974, were transferred to the Unrestricted Endowment Fund for investment.

By action of the Executive Council, the assets of the pension fund were transferred to a trustee account with a bank subsequent to June 30, 1975, and the plan was modified to conform to requirements of the Pension Reform Act of 1974.

### **Building Agreement**

The Society occupies facilities in Independence National Historical Park. The provisions of the agreement with the Department of Interior require that the Society assume responsibility for the routine operation, maintenance, and minor repairs to the interior of the building, the garden area and all related machinery and equipment. The Society is required to deposit \$100 per month in a fund for major repairs and replacements to buildings, equipment and grounds. The agreement terminates in 1983 and is renewable at the option of the Federal Government.

## **The Pennsylvania Horticultural Society Report on Examination Years Ended June 30, 1975 and 1974**

The Council of The Pennsylvania Horticultural Society  
Philadelphia, Pennsylvania

We have examined the balance sheet of The Pennsylvania Horticultural Society at June 30, 1975 and 1974, and the related statements of Principal and Operating Fund revenue and expenses for the years then ended. Our examination was made in accordance with generally accepted auditing standards and, accordingly, included such tests of the accounting records and such other auditing procedures as we considered necessary in the circumstances.

The financial statements are prepared on a modified cash basis, in that items of revenue and expenses (except for depreciation) are recorded as received and paid. Preparation of the financial statements on the accrual basis would require that a deferred credit of approximately \$42,000 and \$33,000 for June 30, 1975 and 1974, respectively, for membership dues paid in advance be shown on the balance sheet.

In our opinion, such financial statements present fairly the financial position of The Pennsylvania Horticultural Society at June 30, 1975 and 1974 and the Operating Fund revenue and expenses and changes in Principal for the years then ended, on the basis indicated in the preceding paragraph, applied on a consistent basis.

Main Lafrentz & Co.  
Certified Public Accountants  
Philadelphia, Pennsylvania  
August 15, 1975

## MEMBERSHIP

Membership June 1974 — 5,388

Membership June 1975 — 5,531

The names and addresses of all current members are on file. Of the total members, 183 were contributing members and 59 sustaining members in the fiscal year.

### **New Life Members 1974-75**

Mrs. Lindley Boyer

Mrs. W. Emory Burnett

Paul P. McFarland

Mr. and Mrs. Bayard H. Roberts

Mrs. Arthur Rosenlund

Mrs. William E. Vauclain

Harold C. Wessel

Mrs. Daniel S. Whiteman

## OTHER ACTIVITIES

### **Miscellany**

25,510 people came to Society Headquarters from July 1974-June 1975. That means that we had an increase of 11,000 visitors during the pre-bicentennial period over the previous year.

Our horticultural inquiries increased 20% over last year's, i.e. we had more than 6,000 letters and phone inquiries about plants and their problems.

### **Organizations Meeting at PHS Once or More During the Year**

American Horticultural Society

City Dept. of Recreation,

Neighborhood Park Program

Cooperative Extension Service,

Penn State University

Delaware Valley Chapter,

American Rock Garden Society

Friends of Powel House

Greater Philadelphia Cultural Alliance

Horticultural Curriculum Orientation, School District of Phila.

John Bartram Association

Landscape Design Critics Council,

Nat'l Council State Garden Clubs

Liberty Bell Chapter, American

Gloxinia and Gesneriad Society

Middle Atlantic Regional Lily Group

Neighborhood Garden Association

Northeast Region, American Orchid Society

Parkway Class, School District of Philadelphia

Pennsylvania Bonsai Society

Philadelphia Chapter,

Cactus and Succulent Society

Philadelphia Chapter,

Indoor Light Gardening Society

Philadelphia Chapter,

American Rose Society

Philadelphia Chapter,

American Rhododendron Society

Philadelphia Committee,

Garden Club of America

Philadelphia Convention & Visitors

Bureau — Guides Orientation

Philadelphia Society for Promoting Agriculture

Young Audiences, Inc.

**Staff Members Attended or Participated in Meetings of the Following Organizations:**

- American Association of Botanic Gardens and Arboreta
- American Bonsai Society
- American Horticultural Congress
- \* American Horticultural Society
- American Horticultural Society, Dumbarton Oaks Conference on Garden Restoration and Preservation
- American Rock Garden Society, Delaware Valley Chapter
- Community Gardening Conference, Gardens for All, Inc. Delaware Valley Chapter
- American Rock Garden Society
- \* Earth Congress
- Garden Club of America, Medal Award Committee
- \* Gardens Writers Association of America
- Governors Anti-Inflation Garden Conference
- \* Greater Philadelphia Cultural Alliance
- \* International Shade Tree Conference
- \* John Bartram Association
- National Associations of Exposition Managers
- National Council for Therapy and Rehabilitation through Horticulture
- \* Neighborhood Gardens Association
- Pennsylvania Bonsai Society
- Pennsylvania Environmental Council
- Philadelphia '76
- Philadelphia Chapter, American Rhododendron Society
- Philadelphia Chapter, American Rose Society
- Philadelphia Chapter, Indoor Light Gardening Society
- Philadelphia County Extension Service Executive Committee
- \* Philadelphia Festival
- Philadelphia Public Relations Association
- Professional Fund Raisers Association
- \* Women in Communications, Inc.
- \* Served on governing body



## **In addition to routine duties**

Staff members served as judges at five flower shows and garden competitions. Six staff members staged their own exhibits or made entries in both the Harvest and Flower & Garden Show. Staff also lectured to or cooperated with projects of the:

Free Library of Philadelphia  
Frelinghuysen Arboretum Members  
Girl Scouts of Philadelphia  
Indoor Light Gardening Society  
of America  
Liberty Bell Chapter, American  
Gloxinia and Gesneriad Society  
The Massachusetts Horticultural  
Society  
New Jersey Extension Service,  
Rutgers University  
New York Botanical Gardens  
Not For Women Only — Barbara  
Walter's National TV Show  
Temple University, School of  
Journalism

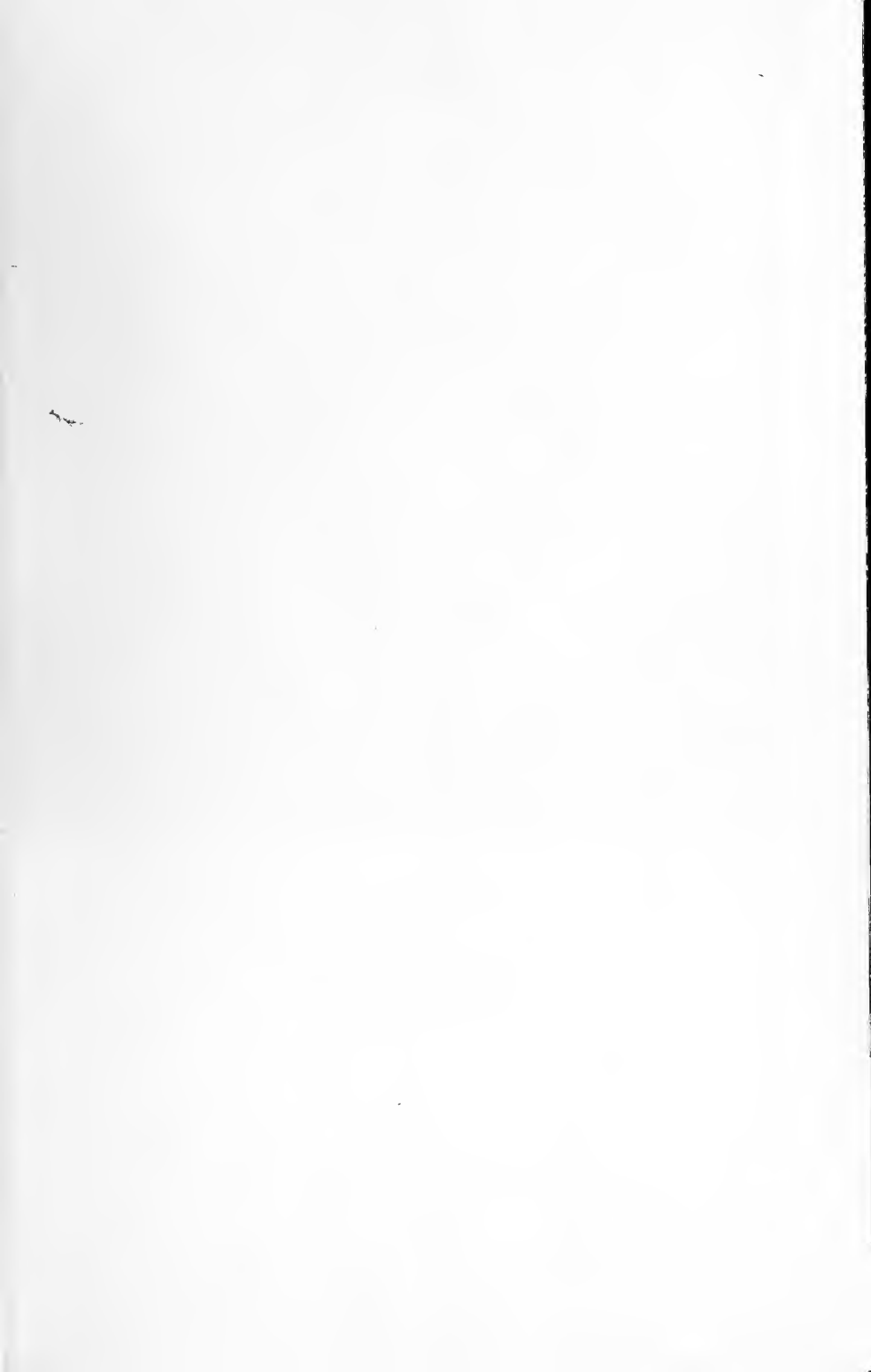
## **PHS Staff**

Ernesta D. Ballard  
President  
Charlotte L. Archer  
Members Activities  
Linda Bernstein  
Secretary  
Blaine Bonham  
Director of Community Activities  
Jean Byrne  
Editor  
Patricia M. Cain  
Administrative Assistant  
Grace M. Cole  
Membership Secretary  
Cheryl A. DeLisle  
Secretary  
Rick Fredette (to 9/74)  
Educational Coordinator  
F. Evelyn Hett  
Flower Show Secretary  
Benjamin Johnson  
Custodian  
Carol Lindemann  
Secretary  
Edward L. Lindemann  
Horticulturist  
James P. McCarvill  
Flower & Garden Show Manager  
Julie Morris  
Horticultural Librarian  
Marie Rodia  
Receptionist  
Carol Sclafani  
Field Horticulturist  
Frances Sinclair  
Cataloger  
George C. Sinkler  
Assistant to the President (to 9/74)  
Theodora Welgoss  
Bicentennial Projects Director  
Honora Wesley-Burke  
Book Restorer  
Mary Williams  
Housekeeper



#### **Photo Credits**

Carole Bell, pp 9,10; John Condax, p. 5;  
Edmund B. Gilchrist, Jr., pp. 2,7,13,14,15,  
17,18,21; Myrna Ludwig, pp. 11,23;  
Vinciguerra, p. 16.







the pennsylvania  
horticultural society  
**yearbook 1976**



# yearbook

**July 1, 1975 to June 30, 1976**

The Pennsylvania Horticultural Society  
Independence National Historical Park  
325 Walnut Street  
Philadelphia, Pennsylvania 19106  
(215) WA 2-4801

## **Contents**

- 2 From the Chair
- 3 From the President
- 5 Administration
- 8 Members Activities
- 10 Community Activities
- 13 Flower Shows
- 17 Headquarters Exhibits  
and Shows
- 18 Services
- 20 Awards
- 24 PHS Bicentennial  
Projects
- 28 Contributions
- 29 Preview Dinner
- 29 Membership
- 30 Financial Report
- 34 Other Activities

Cover photo:  
PHS bicentennial symposium at Winterthur.

At right, topiary created by Gisele Walls





## From the Chair

As PHS nears the beginning of its 150th year—the official date of our founding is November 24, 1827—we can say with assurance that the Society is flourishing.

Abundant evidence to support this view can easily be found in this report, which covers in some detail our diverse activities during the 12-month period ended June 30.

Three factors, I believe, are largely responsible for our continuing progress.

Thanks primarily to the success of our spring Flower and Garden Show and annual preview dinner, we have the financial resources needed to carry on a range of innovative horticultural programs, which benefit not only our members but the general public as well. We also have a highly knowledgeable, versatile and dedicated staff to develop and supervise these programs.

And, most encouraging of all, we have an ever-growing number of member volunteers with varied skills and interests who work hard and effectively to support their Society's activities. In the past year, this volunteer effort was encouraged and coordinated—with all-important staff assistance—by 16 different committees made up of about 250 members. No one knows for certain the exact number of volunteers who worked on PHS projects during the year, but an educated guess is that about one in three of our 6000 members probably did more for the Society than just pay their dues.

That is most certainly a healthy situation—one that bodes well for the horticultural welfare of the Delaware Valley in the years to come.

My thanks on behalf of the Executive Council go to all who have had a hand in making the past year a truly flourishing one for PHS.

Herbert W. Goodall, Jr.  
Chair, PHS Executive Council





## From the President

As we complete our 149th year and begin to prepare for our grand sesquicentennial celebration, it is gratifying to report that the Society's finances are sound; its staff is capable; and its programs are well-received. Most important, the Society is playing a larger part in the cultural and educational life of the Delaware Valley than at any time in recent decades.

One aspect that is particularly pleasing to me is the protection we are now able to give our employees. For several years we have had medical-surgical and major medical insurance. In the past year we have adopted a long-term disability plan and a modern pension plan which meets all the requirements of the Employee Retirement Income Security Act, and we have taken the first steps to secure it with a trust fund held by an independent trustee.

Another recent development of great importance is our community garden program, which consists simply of providing encouragement, horticultural information, organizing experience and a modicum of tangible assistance to inner city groups desiring to have vegetables and flower gardens. Two staff members spend the fall and winter working with teachers, block leaders and others, who take the plans back to their classrooms, clubs, recreation centers and block meetings. In the spring and summer the staff drives from site to site in our specially equipped Gardenmobile delivering seeds, fertilizer and advice. In the past year we arranged with the Neighborhood Garden Association to carry out the staff work of its garden block program as part of our community garden activities, leaving the Association to concentrate on planning, evaluation and funding. This

arrangement has been successful beyond all expectations.

Society publications have found their way into private and public libraries throughout the land. Requests for our *Curriculum Guide* come to us from all over. Our bicentennial exhibit catalogue, *From Seed to Flower* is a unique outline of Philadelphia's contribution to horticulture in the period from 1620 to 1876; it will be read and studied for years to come. *The Philadelphia Area Green Pages*, after a slow start, is now being used by an increasing number of gardeners in the Delaware Valley. And four other horticultural groups send our magazine the *Green Scene* to their members. Our own members often tell of their delight in its contents and format, and our editor is seldom at a loss for material.

I like to think that our members take pleasure in supporting our community benefit programs. Thousands of them have responded to the Society's major bicentennial program—the planting of 10,000 trees in Philadelphia's parks. But even if they consider only the direct benefits of Society membership to themselves, they are getting their money's worth. The lending privileges of the library would, alone, justify the modest dues, the free use of its resources has increased dramatically over the past decade. In 1966, we operated with a part-time librarian. Today we have two full-time librarians, a part-time book repair specialist and a summer student intern. The bulk of their time is taken up serving Society members.

Answering horticultural questions (approximately 7000) continues to be an enormously time-consuming activity for our horticultural staff. In order to handle the flood of telephone queries without jamming our regular switchboard, we will

continued

install, in July, a separate telephone line, which we call the horticultural "hot-line". We hope this will enable us to continue the service, but we feel a need to evaluate it during the coming year.

The Society's greatest visibility lies in its flower shows and exhibits, which may well be its greatest service to the community. The Philadelphia Flower and Garden Show, held each year in March at the Philadelphia Civic Center, is nationally acclaimed. Its strength is to be found in the skill and dedication of the committees, exhibitors and staff who plan, plant and run it. The smaller Harvest Show, held the last weekend in September in Memorial Hall is just as distinguished, although on a lesser scale, and attracts a different constituency of workers and visitors. The shows and exhibits staged throughout the year in the Society's headquarters in the Independence National Historical Park are both expert and varied. The bicentennial exhibit, which the exhibits committee worked on for over a year and completed for an April 6 opening, is particularly memorable.

This message does not attempt to be a comprehensive review of all the things we are doing. You will find them outlined and reported on in the following pages. My purpose here is simply to give you a feeling for some of the developments that have kept your Society healthy and, I like to think, productive.

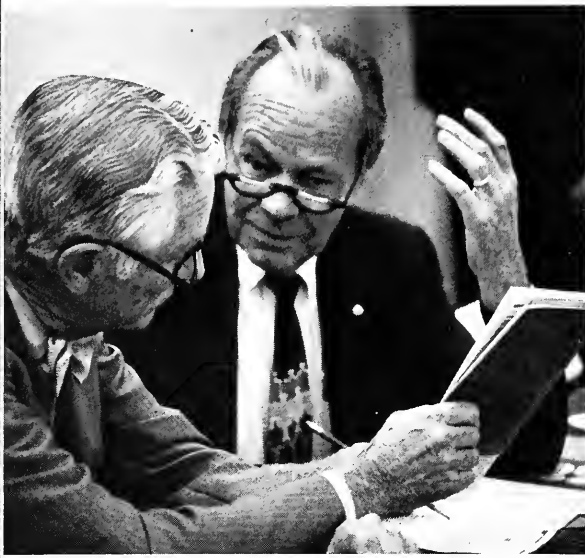
Ernesta D. Ballard  
President



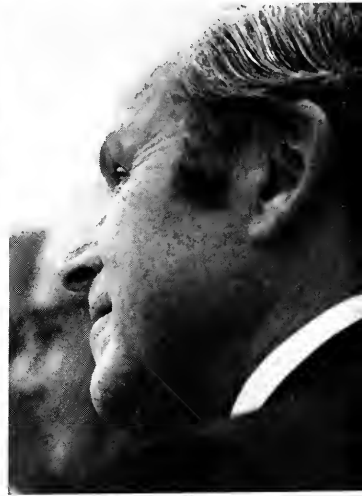
# administration



The Executive Council



The Executive Council



## administration continued

### Executive Council

Herbert W. Goodall, Jr.  
Chair  
L. Wilbur Zimmerman  
Vice-Chair  
Robert S. Ryan  
Vice-Chair  
Ernesta D. Ballard  
President  
Alan Crawford, Jr.  
Treasurer  
James P. McCarvill  
Secretary  
Elizabeth C. Bennett  
George Borowsky  
C. Stuart Brown  
William C. Burleigh  
Frederic W. Clark  
George R. Clark  
Mrs. John R. Clark  
Barbara H. Emerson  
William G. Foulke  
Mrs. Eugene G. Grace  
Mrs. Walter K. Howard

Mrs. Paul E. Kelly  
John S. Kistler  
Mrs. Nelson J. Leidner  
Mrs. Adolphus Lewis, Sr.  
Richard W. Lighty  
Mrs. John D. Lohmeyer  
William D. MacDowell  
Henry D. Mirick  
Craig S. Oliver  
J. Liddon Pennock, Jr.  
Mrs. Alfred W. Putnam  
Henry H. Reichner, Jr.  
Adolph G. Rosengarten, Jr.  
Bradshaw Snipes  
John E. Strong  
Mrs. Morris W. Stroud, 3rd  
J. Franklin Styer  
Mrs. H. Rowland Timms  
Mrs. S. Newbold van Trump, Jr.  
Mrs. E. Perot Walker  
Mrs. John G. Williams  
Esther J. Winters  
Minturn T. Wright, 3rd  
Dorothy S. Young

**Executive Committee**

Herbert W. Goodall, Jr.

Chair

Alan Crawford, Jr.

Mrs. Paul E. Kelly

Lee M. Raden

Robert S. Ryan

Mrs. John G. Williams

L. Wilbur Zimmerman

↓

**Nominating Committee**

Mrs. Eugene G. Grace

Chair

William C. Burleigh

Alan Crawford, Jr.

Mrs. John D. Lohmeyer

Henry H. Reichner, Jr.

Robert S. Ryan

↓

**Investment Committee**

Alan Crawford, Jr.

Chair

William C. Burleigh

George R. Clark

Alfred S. Martin

Minturn T. Wright, 3rd

↓

**Personnel Committee**

Alan Crawford, Jr.

Mrs. Paul E. Kelly

Robert S. Ryan

**Pension Plan Committee**

Alan Crawford, Jr.

Mrs. Paul E. Kelly

Robert S. Ryan



# members activities

## Committee

George R. Clark

Chair

Mrs. Walter K. Howard

John S. Kistler

Mrs. John D. Lohmeyer

Mrs. Morris W. Stroud, 3rd

The Society invited members to five lectures and symposia, garden visits on two spring afternoons, and frequent meetings of eight plant societies that meet in the headquarters.

Special events were arranged for members. These included: the annual plant give-away, Harvest Show preview, Annual Meeting at the Independence National Historical Park Visitor Center, Christmas Show Open House following the Candlelight Stroll, New Year's Eve Open House preceding the moving of the Liberty Bell, and in spring, previews of the Flower & Garden Show and the PHS Bicentennial Exhibit, 'From Seed to Flower.'



Garden tours continue in the rain.

Registration events (minimal fee) included three multi-session courses (container gardening, indoor bonsai, landscape design), six workshops (making pressed plant pictures, seed mosaics, wreaths) a lecture-demonstration co-sponsored with Ikebana International, and 11 field trips to the Pine Barrens, Barnes Arboretum, Green Lane area, Henry Foundation, Brooklyn Botanic Garden, and Philadelphia Zoo. Subscription suppers preceded three evening events.

Members also took part in specially planned trips to Scandinavia, Mayaluum, the British Isles, and Dutchess County, New York.

All activities were well-attended and registration events were fully subscribed.

## Garden Visits

### May 1976 Chestnut Hill

Mr. & Mrs. Logan B. Gill  
Mr. & Mrs. Horace C. Jones  
Mr. & Mrs. Alfred S. Martin  
Mr. & Mrs. Frederick W. G. Peck

### June 1976 Main Line

Mr. & Mrs. Walter K. Howard  
Mrs. Walter Rebmann  
Mr. & Mrs. Charles S. Truitt  
Mr. & Mrs. Algernon Roberts  
Dr. & Mrs. L. Wilbur Zimmerman

### June 1976 Dutchess County, N.Y.

Mr. Harrison B. Cultra  
Mr. & Mrs. Howland Davis  
Mrs. Lytle Hull  
Mr. Chauncey Stillman  
Mr. & Mrs. Oakleigh B. Thorne  
Mr. William S. Wasserman



Member's garden tours, Chestnut Hill.



# community activities



## **Committee**

L. Wilbur Zimmerman  
Chair

Mrs. McBee Butcher  
Mrs. John R. Clark  
Mrs. Adolphus Lewis, Sr.  
Mrs. H. Rowland Timms  
Esther J. Winters  
Mrs. Andrew Wright  
Minturn T. Wright, 3rd

6



## School Program

For the third year "Indoor Gardening In The Classroom" was taught to teachers in the Philadelphia School District, but for the first time 200 teachers received in-service credit for completing the course, which ran 16 hours over an eight-month period. Since its inception 600 teachers have attended these classes, and armed with the PHS-developed horticultural curriculum guide and materials and ideas, they have covered classroom desks, windowsills, and benches with plants, terrariums, dish gardens, and rooting trays.

Evidence of success was obvious at the Children's Flower Show last November, sponsored by St. Christopher's Hospital and the Society. Philadelphia school children submitted half of the 400 entries. Almost all their teachers were students in the PHS program.

## NGA-PHS Cooperative Effort

In March, the Neighborhood Garden Association undertook with the Society an agreement whereby PHS would implement their Garden Block Program, and NGA's area worker joined PHS's staff. The program assists interested people to improve neighborhood streets with planted window boxes and tire urns. Sponsoring garden clubs work with blocks, providing the flowers and gardening know-how for a two year

period, after which the blocks become autonomous. NGA sets up an annual sale to provide plants at wholesale prices to the independent blocks. PHS staff has developed a series of winter workshops for Garden Blocks and Community Vegetable Garden groups to further nurture an interest in horticulture in the urban environment.

Nineteen new blocks were planted in 1976, bringing the total of active blocks in the program to over 130.

## Community Gardening

A well-formed, solid head of red cabbage, a 25 pound watermelon, vine-ripened tomatoes, eggplants, and squash, sunflower heads, arrangements of garden greens dotted with red peppers, carrots and beets—these vegetables captured the eyes of the judges at the First Annual Community Vegetable Gardens Harvest Party at the Society headquarters last fall. All the produce exhibited had been grown on converted vacant lots throughout the city, which just a few months before had been dumping grounds for trash and debris. All of the exhibitors were city dwellers, some gardening for the first time and others thankful to get back to the soil after many years absence.

Thirty-seven groups, all part of the Society's Community Vegetable Gardening program,

# community activities continued

completed the 1975 growing season. Enthusiasm fostered by success created such a demand that 40 new groups joined the growing family of PHS-sponsored PhilaFarmers in 1976. Topsoil, organic material, peat moss, fertilizer, tools, fencing, seeds, and plants, plus a series of gardening workshops and newsletters, were provided by the Society and Bell Telephone Company. The Gardenmobile, during its regular visits to these city farms with supplies, suggestions, and information, noticed cultivated areas sprouting independently around Philadelphia. The idea is "catching on" and it is rewarding to see the concept of "greening the city" become a reality.

## Free Plant Clinics

The PHS horticultural staff held a free plant clinic once a month on Sunday afternoons; the clinic was open to everyone. People brought their plants, and staff answered their questions about identification, culture, diseases and pests. From 50 to 75 people attended each session. A film about growing plants indoors was repeated throughout the afternoon.

## Parkway Program

PHS has been involved with Parkway since 1970, teaching students about horticulture in an urban setting. The 1975 course in the fall included field trips to landscape architects' offices, the Morris Arboretum and Longwood Gardens. The students learned about how trees in the city are cared for, and they participated in several practical workshops at the PHS headquarters.

Twelve Parkway students took part in the ten week course. Several of the students returned to work at the 1976 Spring Flower and Garden Show.



# flower shows

Philadelphia Flower & Garden Show



# flower shows continued

## 1976 Philadelphia Flower and Garden Show

Philadelphia Civic Center

March 7 through 14

Attendance: 201,000

A number of the Show's major exhibitors chose the Nation's Bicentennial as their theme: a 1776 Spanish Mission, a Valley Forge Cabin, white and blue floral combinations. Others looked to the future: a solar greenhouse, gardening by computer and experiments in approaches to growing.

For the first time, the members' preview was held on the Saturday (March 6) before the public opening, and the major exhibitors awards luncheon was combined with the competitive classes award ceremony on the closing Saturday.

Princess Grace of Monaco judged pressed flower pictures and also attended the preview dinner. Of the 1,286 competitive classes entries 1,078 were in horticulture, which set a record.

### Committee

William D. MacDowell

Chair

Mrs. Eugene G. Grace

Vice-Chair

Ernesta D. Ballard

Mrs. Norman S. Bemis

Herbert Bierberfeld

Mrs. James F. Bodine

Mrs. John P. Butler, 3rd

George R. Clark

Mrs. S. Grey Dayton

Mrs. Hubert P. Earle

Herbert W. Goodall, Jr.

Mrs. Thomas M. Hyndman

Mrs. W. Roy Kolb

Helen LeBlond

Mrs. John D. Lohmeyer

Henry D. Mirick

J. Liddon Pennock, Jr.

Mrs. Alfred W. Putnam

Mrs. C. Madison Riley

Mrs. J. Brooks Semple

Albert F. W. Vick, Jr.

Mrs. William Ward, 4th

Mrs. P. L. Welsh

Mrs. George I. Wright

L. Wilbur Zimmerman



## **Children's Flower Show of St. Christopher's Hospital for Children**

sponsored by PHS  
Tuesday and Wednesday, November  
25 and 26  
Galleria, Centre Square Building

### **Committee**

John W. McWilliams  
Chair



Mrs. John Thacher  
Mrs. Henry B. King  
Mrs. G. Morris Dorrance  
Mrs. John W. McWilliams  
Mrs. George B. Barnard

Junior garden clubs, 4-H clubs, public and private school students and community centers entered 450 exhibits.

Ten special exhibits included a pumpkin island; apple trees, scarecrows by the Fairmount Park Summer Day Camps, an effigy of Johnny Appleseed; apple dolls, corn pone or the uses of corn and an asphalt garden.

Enthusiastic teachers and students have requested that this show become an annual event. A second show has been planned for the fall of 1976.

## **1975 Harvest Show**

**Memorial Hall, Saturday and Sunday  
September 27 and 28**

Each year Delaware Valley gardeners stage and visit the annual Harvest Show held the last weekend in September in Memorial Hall, Fairmount Park. In spite of our 149 years of staging annual harvest shows, we doubt the weather has ever been less cooperative. In spite of torrential rains, nearly 700 people attended the Friday afternoon Preview held for members and specially invited garden clubs. Total attendance at the Show was 7,200. Two hundred and seventy exhibitors showed nearly 1,000 plants.

For the first time horticulturally related trade booths had a place at the Show; they offered spring flowering plants, books, dried materials, plants and pumpkins.

continued

# flower shows continued



Visitors entered the Harvest Show through a tent this year.

## Committee

William C. Burleigh

Chair

Doris W. Atkinson

Mrs. William Balderston

Mrs. Norman S. Bemis

Mrs. Thomas G. Brown

Mrs. Preston Carter

Mrs. John R. Clark

Mrs. Alan Corson, Jr.

Mrs. Thomas F. Everist

Mrs. Morton Fellheimer

Mrs. William H. Gray

Mrs. Francis L. Harrigan

Mrs. Elmer Hartwick

Mrs. John F. Hayes

Mrs. Richard E. Heckert

Mrs. Robert H. Hilderbrand

Mrs. George A. Hewitt

Mrs. Melvin Lucas

Mrs. C. H. Marlar

Erich F. Meitzner

Mrs. John Metz, III

Mrs. Clark R. Morris

Mrs. Victor J. Roberts

Mrs. George W. Schelling

Mrs. Randolph M. Slater

Mrs. S. N. van Trump, Jr.

Mrs. E. Perot Walker

Mrs. John G. Williams

Benjamin Wilson

20



# headquarters exhibits and shows

## 1975 Annual Holiday Show

December 5 to 30  
Attendance: 4,644

Holiday decorations in twentieth century America are a complex interweaving of centuries of customs and traditions. Our Show looked back through time and created and re-created designs inspired by this heritage. The theme was Living Traditions of the Yuletide.

### Committee

#### Chairs

Mrs. L. Davis  
Mrs. Thomas G. Brown 3  
Doris W. Atkinson

Pagan and Early Christian—350-1100

A.D.—Mrs. J. Preston Leavitt

Medieval—1100-1450—Mrs. Leonard  
W. Snyder

The Renaissance—1450-1600—  
Susan C. Ward

The Reformation—16th and 17th  
Centuries—Robert L. Osborne

The New World—18th Century—  
Patricia Sonneborn

Victorian—19th Century—  
Mrs. Adolph Hirstius

20th Century—Mrs. Edward Brinton

Special consultants worked on  
each section of the Show.

Scriptwriter: Mrs. Charles Truitt

## 12th Annual Middle Atlantic Regional Lily Group

July 12 & 13, 1975

Alice H. Esslinger  
Chair 1

## Monthly Exhibits

### Committee

Mrs. S. Newbold van Trump, Jr.  
Chair

Mrs. Norman S. Bemis

Mrs. Preston Carter

Mrs. Mercade A. Cramer, Jr.

Mrs. Elmer Hartwick

Mrs. Richard E. Heckert

Mrs. George A. Hewitt

Mrs. Milton Laden

Mrs. H. Vernon Lapp

Mrs. Edwin A. Peeples

Joanna McQuail Reed

Mrs. Victor J. Roberts

Mrs. Lyle R. Tanner 10

Esther J. Winters

### July—August

Colonial Gardening in Delaware  
Valley

### September

Speaking of Seeds

### October

Highlights from the Harvest Show

### November

South Comes North

### December

Christmas Show

"Living Traditions of the Yuletide,  
II"

### January

Oriental—Bonsai, Ikebana, Plant  
Introductions

### February—March

Horticultural Fibers Work for Man

### April—May—June

Bicentennial Exhibit

"From Seed to Flower—1681—  
1876"



## Library

### Committee

Barbara H. Emerson

Chair

Frederick W. Clark

George R. Clark

Bessie Greenawalt

George M. Harding

Marianna Merritt Hornor

Mrs. H. Vernon Lapp

Richard W. Lighty

Lee Morris Raden

Adolph G. Rosengarten, Jr.

Mary Lou Wolfe

Elisabeth Woodburn

Dorothy S. Young

The PHS Library accessioned 476 new books into its collection this past year; 78 were gifts from members. About 300 books are circulated from the library each month and an equal number of books, journals and other reference materials are used in the library every month.

PHS continues to serve as the library for the American Rock Garden Society and circulated 600 books on rock gardening to ARGs members around the world. PHS has also joined with the American Bonsai Society in a similar agreement. In return for an agreed upon fee from ABS, members may borrow books on bonsai and related topics. Over 300 requests for bonsai material were received in the first six months of the agreement.

The library has continued its book restoration program and all the books in the PHS Bicentennial Exhibit, "From Seed to Flower", have been restored. The committee intends to restore the books in the Pennsylvania Special and Rare Book Collections.



Money contributed by "Friends" of the library helps support the restoration program. This year "Friends" gave nearly \$5,000 to the library. PHS has spent \$7,500 to date on book restoration. In addition to the restoration program, the library conducts a repair program to take care of books in the circulating collection that cannot be replaced easily. The library currently lists well over 13,000 titles making it the largest collection of horticultural literature in the Delaware Valley.

## Gardens

### Garden Volunteers:

Edward Doelp  
Mrs. Robert B. Inverarity  
Mrs. John S. Kaufman  
Mrs. Barton Kroungold  
Mrs. h. Vernon Lapp  
Marjorie Maurer  
Matthew McConnell  
Mrs. Donald McPhail  
Rear Adm. & Mrs. C. J. Van Arsdall  
Frances Vollmer  
Benjamin Wilson

The 18th Century Garden was planted in red, white and blue to honor the bicentennial celebration and to delight the expected visitors: red butterfly begonias, white wax begonias and blue and white ageratum, with plenty of dusty miller. The volunteers worked 900 hours throughout the reporting year to ready the 18th Century Garden, the PHS cutting and vegetable gardens and the Bishop White Garden at the corner of 3rd & Walnut Streets.

Because unusually heavy traffic was expected, and because the garden is now in its second decade, it was necessary to perform some major maintenance. A newly sodded lawn, new pebble paths and major pruning and plant material replacement were completed in time for the bicentennial.

## Publications

### Committee

Craig S. Oliver  
Chair  
George Borowsky  
George M. Harding  
Nancy Howard  
Robert S. Ryan  
J. Franklin Styer  
Dorothy S. Young

PHS's bimonthly magazine, *Green Scene*, passed the 7,000 circulation mark after adding subscriptions for the entire membership of Skylands Association (Ringwood, N.J.) and Reeves Reed Arboretum (Summit, N.J.). *Green Scene* now goes to the membership of four horticultural organizations as well as to PHS membership.

At its May meeting the publications committee approved a budget for color photos throughout the magazine.

The Society's newsletter is published 11 times a year. It lists in complete detail the Society's activities throughout the year as well as other Society news, and when space permits information about other horticultural activities in the area.



# awards

## **1975 Distinguished Achievement Medal**

Owen B. Schmidt

## **1975 Certificate of Merit**

Advisory Board of Managers of the  
Morris Arboretum

## **Certificate of Merit**

Mrs. L. Davis Jones

## **Certificate of Merit**

John C. Swartley

## **Plant Society Award**

Dorothy S. Young

## **1975 Landscape Horticulture**

**Awards of The Greater Philadelphia Chamber of Commerce** in cooperation with the **Pennsylvania Horticultural Society**

Peddler's Village

McDonalds Restaurant

Medford Leas

Philadelphia Contributionship

## **1976 Gardens of Olney**

The Pennsylvania Horticultural Society Awards Committee cooperated with the Delaware Valley Landscape Design Critics to judge and present 31 awards to the 1976 Gardens of Olney.

## **1976 Junior Horticulturist**

Cynde Schwartz

**The 1976 PHS Horticultural Sweepstakes Trophy** for the accumulation of the greatest number of blue ribbons in the Horticultural Classes of the Philadelphia Flower & Garden Show and the Harvest Show to:

Mrs. Sidney Keith

Exhibitors and Awards luncheon combined for the first time. The screens were for a multi-media show featuring participants in past Shows.





# awards continued

## **Pennsylvania Horticultural Society Special Award for 1975 People Paper Gardens**

Web Chrisman, West Philadelphia  
Arthur J. Skill, Kensington  
Senior Willing Workers, North  
Philadelphia

## **Major Flower Show Awards 1976 Philadelphia Flower & Garden Show**

**The Pennsylvania Horticultural  
Society Flower Show Award** for the  
best in show in the following  
categories:

### **Educational Exhibit**

W. Atlee Burpee Company

### **Floral Exhibit**

Waldor Orchids

### **Landscape Exhibit**

Vick's Wildgardens, Inc.

### **Special Exhibit**

Pennsylvania Bonsai Society

## **The Pennsylvania Horticultural Society Awards of Merit to:**

County Line Landscape Nursery

Delaware Orchid Society

Delaware Valley Chapter, American  
Rock Garden Society

Delaware Valley College of Science  
and Agriculture

Fairmount Park

Friends Hospital

Florists Transworld Delivery  
Association

Gale Nurseries

Judd's Hollylan Nurseries

Meadowbrook Farm

Mercer County Community College

Morris Arboretum

Philadelphia & Valley Forge  
Chapters, American Rhododendron  
Society

Philadelphia Area Daffodil Society  
Philadelphia Cactus & Succulent  
Society

Philadelphia Chapter, Indoor Light  
Gardening Society of America

Philadelphia Zoological Garden

George Robertson & Sons, Inc.

Rosade Bonsai Studio

Roses, Inc.

Southeastern Pennsylvania Orchid  
Society

J. Franklin Styer Nurseries, Inc.

Temple University, Ambler Campus

Walter Biddle Saul High School

Whitemarsh Landscapes, Inc.

## **The Pennsylvania Horticultural Society Horticultural Sweepstakes Trophy**

for the accumulation of  
the greatest number of points in  
the Horticultural Classes

Mrs. John G. Williams

## **The Pennsylvania Horticultural Society Room Award**

for the outstanding Blue Ribbon  
winner in the Room Classes to

Seed and Weed Garden Club

## **The Pennsylvania Horticultural Society Table Award**

for the outstanding Blue Ribbon  
winner in the Table Classes

Villanova Garden Club

## **The Pennsylvania Horticultural Society Flower Arranging Sweepstakes Trophy**

to the individual accumulating the  
greatest number of points in the  
Arrangement Classes Section

Mrs. Harry C. Groome, Jr.

## **The Pennsylvania Horticultural Society Club Sweepstakes Award**

for the accumulation of the greatest  
number of points in the Arrangement  
Classes Section

Four Counties Garden Club

## 1975 Harvest Show

**The Flower Show Award of the Pennsylvania Horticultural Society—Arboretum of the Barnes Foundation**

PHS Club Sweepstakes Trophy—  
Trevose Horticultural Society  
PHS Gardeners Sweepstakes Trophy  
—Louis S. Heins

PHS Arrangement Sweepstakes  
Trophy—Mrs. James Weir

PHS Trophies to Outstanding  
Exhibits—

Men's Garden Club of Delaware  
Valley

Bromeliophiles of Greater  
Philadelphia

Philadelphia Cactus and  
Succulent Society

Meadowbrook Farm

Loren Young Johnson Family  
W. Atlee Burpee Company

National Council Award of  
Horticultural Excellence—  
Mrs. John S. Magill

National Council Awards of  
Horticultural Merit—

Mrs. John S. Magill

W. H. Dyre

Erich F. Meitzner

## Presented at Other Flower Shows

**The Flower Show Medal of the Pennsylvania Horticultural Society** to the exhibit that best stimulates the use of flowering plants in or around the home presented to

Longfellow Elementary School of  
Chicago at Chicago Flower &  
Garden Show

The Women's Exhibition  
Committee of the Massachusetts  
Horticultural Society for  
"400 years of American  
Gardens" created by eight  
Massachusetts Garden Clubs

**Pennsylvania Horticultural Society Gold Medal Certificate** to American Daffodil Society Convention Show for the best collection of five blooms registered after January 1, 1970.

## Awards to PHS

The American Association of Botanical Gardens and Arboreta Award of Merit to PHS in recognition of "its many bicentennial projects for the public good through horticulture."



# phs bicentennial projects

One of the original goals of the founders of the Pennsylvania Horticultural Society 149 years ago was to interest people in plants and gardening, "to inspire a taste for one of the most rational and pleasing amusements of man; and to facilitate the means of cultivating that taste." Each of the bicentennial projects was planned with that goal in mind: education, conservation, and recreation. The results will reach into the next century (10,000 Trees), across the nation (the film and national plant society meetings), into the academies and institutions (symposiums) and to the dedicated gardener as well as the tourist with the potential for caring (exhibit). Many members of the Society were involved in the planning and execution of these projects over the last several years.

## **From Seed to Flower: Philadelphia 1681-1876 A Horticultural Point of View**

The exhibit, assembled and staged by the exhibits and library committees, documents Philadelphia's horticultural greatness, chronicled in the late eighteenth and early nineteenth centuries. Thirty-eight major books written, published and used by Philadelphians during that era were assembled, and a major catalogue, the first of its kind, brought together in one place the story of the growth of horticulture in Philadelphia. A handsome staging by the Society's exhibits committee displayed the color plates, title pages or other sections of the books as well as artifacts, charts, models, maps, plants and other memorabilia.

The exhibit and the catalogue were a three year project of the two committees and PHS staff. Consultants for the project were Professor Joseph Ewan, foremost botanical historian in America, and Emily Read Cheston, emeritus member of the library committee, widely respected for her horticultural knowledge and wisdom.

Many of Philadelphia's cultural and historic organizations worked with the Society to prepare the exhibit: The American Philosophical Society, the Library Company of Philadelphia, The Free Library of Philadelphia, the John Bartram Society and Wyck.

The exhibit will be open seven days a week and special guides have been hired to explain the exhibits to visitors. We believe the large number of tourists that have already stopped by took away a profound appreciation of Philadelphia's role in the international horticultural network.

## **10,000 Trees**

### **Committee**

C. Stuart Brown  
Chair  
Mrs. John W. Appel  
Mrs. Raul Betancourt, Jr.  
Frederic W. Clark  
Nancy Clark  
Lawrence Formica  
Mrs. Eugene G. Grace  
Mrs. Adolphus Lewis, Sr.  
Mrs. David Linforth  
John J. Morley  
Mrs. Henry Disston  
Henry H. Reichner, Jr.  
Mrs. Richard T. Saler  
Mrs. Walter Smedley  
Bradshaw Snipes  
Kurt A. Solmssen

continued

The exhibits committee at work before the opening.



# phs bicentennial projects continued

John E. Strong  
Mrs. Morris W. Stroud, 3rd

By the end of the program's third year, 8,000 trees were planted in 31 parks.

Three brochures have been prepared and printed, the two most recent ones including the names of major donors and memorial groves. The names of people who contributed \$10 or more are recorded in a record book. Major donors' names are on a permanent plaque in Memorial Hall.

## Plant Society Meetings

In 1973, PHS issued invitations to many national plant and garden societies to hold their annual meetings in our city during the bicentennial year. Eleven accepted and PHS co-sponsored their meetings and entertained them in the Society's headquarters. Societies convening in Philadelphia during the period covered by this report were:

- American Association of Botanical Gardens and Arboreta
- American Orchid Society
- American Daffodil Society
- Council on Botanical and Horticultural Libraries

In anticipation of additional national meetings in which the Society will render service and provide entertainment, staff and committees spent time arranging for meetings of the following groups:

- American Bonsai Society
- American Horticultural Society
- Holly Society of America
- Indoor Light Gardening Society of America
- Men's Garden Club of America
- National Council for Therapy & Rehabilitation through Horticulture
- North American Lily Society

## 1976 Symposiums

### America's Garden Legacy: A Taste for Pleasure

#### Committee

Richard W. Lighty  
Chair

Elizabeth Chew Bennett  
Julia F. Davis  
Barbara H. Emerson  
Mrs. H. Rowland Timms  
L. Wilbur Zimmerman

A series of seven lectures have been designed to give a broad history of amenity horticulture in the United States, and particularly in the Philadelphia area.

The committee completed the planning of the series and enjoyed the first three before the end of this reporting period:

#### I The Philadelphia Heritage: Plants and People

Charles Hess speaking at Bartram's Gardens.





Winterthur Gardens, Winterthur,  
Delaware

Speaker: Joseph Ewan, Professor  
of Botany, Tulane University

- II Sharing the Wealth: American  
Plants in the English Landscape  
The Arthur Hoyt Scott Horticultural  
Foundation, Swarthmore  
College, Swarthmore, Pa.

Speaker: Diane Kostial McGuire,  
landscape architect, founder of  
the Radcliffe Seminars in  
Landscape and Environmental  
Design, landscape architect  
to Harvard University and  
Wellesley College.

- III Science Enters the Garden  
Bartram's Gardens, Philadelphia,  
Pa.

Speaker: Charles Hess, Dean of  
the College of Agriculture &  
Environmental Sciences at the  
University of California in Davis.

The titles and location of the  
balance of the series are as follows:

A Matter of Taste; Garden Arts &  
Vogues—Fairmount Park,  
Philadelphia

The Houses and Tools of  
Horticulture—Chanticleer,  
Wayne, Pa.

The Organizations of Horticulture  
—Independence National  
Historical Park

The Gardens They Made—Morris  
Arboretum, Chestnut Hill, Pa.

### PHS Film

Our bicentennial film, "How Long  
is Always—A Story of Trees" won the  
American Horticultural Society Award  
of Excellence. We showed the film  
twice a day through June and planned  
to do so throughout the rest of the  
summer. Two prints were given to  
the School District of Philadelphia  
Audio Visual Education and one to  
the Superintendent of Schools, the  
Archdiocese of Philadelphia.





Decisions about suppliers, costs, decor, menus, seating and the logistics of the Preview Dinner are made by the hardworking committee throughout the year.

## Major Contributors

Throughout the year people are generous to PHS; they give time, books, plants and other things of material value.

Because we are limited by space, we cannot acknowledge each gift; we have listed here contributions in excess of \$100.

The Arcadia Foundation  
Mr. & Mrs. Lloyd Balderston  
Mr. & Mrs. William Balderston  
Ernesta D. Ballard  
Mrs. Victor R. Bieber  
Mrs. Elizabeth Billingslea  
Edward Breuniger  
Linda C. Corson  
Mr. & Mrs. James Eiseman

Mrs. Herman W. Fischer  
Mr. & Mrs. W. F. Fischer, Jr.  
Mr. & Mrs. Edward L. Forstall  
Mr. & Mrs. Herbert P. Haley  
Mr. & Mrs. Richard Heilman  
Mr. & Mrs. Barton H. Hunter  
Mr. & Mrs. Charles L. Johnson  
Dr. & Mrs. Edward L. Lame  
Mr. & Mrs. John H. Lippincott  
Mrs. Arthur Littleton  
Katharine Matthews  
Anna McCormack  
Bee McCormack  
Mrs. John McK. Mitchell  
Mr. & Mrs. Elliston P. Morris  
Mrs. W. A. Pendleton  
Friends of the Powel House  
Quaker Chemical Foundation  
Mrs. Arthur S. Roberts

# membership

Mrs. Wharton Sinkler  
Mrs. J. R. Speed  
Mrs. George O. Spencer  
Mrs. Lewis M. Stevens  
Mr. & Mrs. Raymond A. Townley  
The Warwick Foundation  
Mr. & Mrs. Harold Wetherbee  
Mrs. E. A. Whiting  
Mrs. John G. Williams  
Eleanor M. Winter  
Mr. & Mrs. John Wood, 2nd

## Bequests

Betty H. Bancroft

## 1976 Flower & Garden Show Preview Dinner, March 6

The 1,850 members and guests who attended the Preview of the 1976 Philadelphia Flower & Garden Show and the dinner that followed, contributed substantially to the support of important horticultural projects including community gardens, the use of the Gardenmobile and training Philadelphia school system teachers.

Mrs. James F. Bodine  
Chair  
Mrs. Edward E. Cullen, 3rd  
Co-Chair  
Elizabeth C. Bennett  
Mrs. John K. Binswanger  
Mrs. John A. Brown  
Morris R. Brownell, Jr.  
Mrs. Morris R. Brownell, Jr.  
William C. Burleigh  
George R. Clark  
Mrs. George R. Clark

Mrs. Franklin d'Olier, Jr.  
Mrs. George W. Edwards, Jr.  
Mrs. Thomas H. Ginley  
Thorp Van D. Goodfellow  
Mrs. Thorp Van D. Goodfellow  
Mrs. Eugene G. Grace  
Mrs. Bruce H. Greenfield  
Quita W. Horan  
Mrs. Horace C. Jones  
Mrs. Henry B. King  
Daniel M. Layman  
Mrs. Nelson J. Leidner  
Mrs. Charles H. Norris, Jr.  
Mrs. Andrew W. Porter, Jr.  
Mrs. Alfred W. Putnam  
Mrs. Paul Rosenbaum  
Mrs. Geoffrey Stengel  
Mrs. Leon C. Sunstein, Jr.  
Mrs. John Hoover Thacher  
Mrs. George R. Wallis  
Mrs. W. Cooper Willits

## Membership

Membership June, 1975—5531  
Membership June, 1976—5804

The names and address of all current members are on file at PHS headquarters. Of the total members, 166 were contributing, 76 sustaining, 1,581 family, 571 life and 82 student members; the remainder are annual members.

### New Life Members

J. Barrington Bates  
James E. Bates  
Mrs. James E. Bates  
Willa Laurens Bates



# financial report of the pennsylvania horticultural

## **Treasurer's comments:**

In presenting the financial statements for 1976 (and comparative statements for 1975), I would like to point out one item of great significance for the Society and its members. That is the increase in the amount transferred to Special Projects and the 150th Anniversary Fund (\$125,000 in 1976 against \$25,000 in 1975) and the growth in the total set aside for those purposes as a liability on the balance sheet (\$320,000 in 1976 against \$195,000 in 1975).

These entries reflect a decision by the Council to use the money for special projects rather than add it to endowment. Because of this decision, the Society can plan, undertake and fund programs extending over several years with the assurance that money will be available to meet commitments regardless of the inevitable ups and downs in year-to-year revenues and expenses.

Respectfully  
Alan Crawford, Jr.  
Treasurer

## **Report on Examinations Years Ended June 30, 1976 and 1975**

The Council of The Pennsylvania Horticultural Society  
Philadelphia, Pennsylvania

We have examined the balance sheet of The Pennsylvania Horticultural Society at June 30, 1976 and 1975, and the related statements of Principal and Operating Fund revenue and expenses for the years then ended. Our examination was made in accordance with generally accepted auditing standards and, accordingly, included such tests of the accounting records and such other auditing procedures as we considered necessary in the circumstances.

The financial statements are prepared on a modified cash basis, in that items of revenue and expenses (except for depreciation) are recorded as received and paid. Preparation of the financial statements on the accrual basis would require that a deferred credit of approximately \$45,000 and \$42,000 for June 30, 1976 and 1975, respectively, for membership dues paid in advance be shown on the balance sheet.

In our opinion, such financial statements present fairly the financial position of The Pennsylvania Horticultural Society at June 30, 1976 and 1975 and the Operating Fund revenue and expenses and changes in Principal for the years then ended, on the basis indicated in the preceding paragraph, applied on a consistent basis.

Main Lafrentz & Co.  
Certified Public Accountants  
Philadelphia, Pennsylvania  
August 2, 1976

# society

## Balance Sheet June 30, 1976 and 1975

Assets	1976				1975*
	Operating Fund	Endowment Funds			Total
		Unrestricted	Restricted	Total	
Cash (savings accounts 1976 \$227,035 and 1975 \$126,131)	\$236,002	\$ 71	\$5,354	\$241,427	\$161,497
Marketable securities (market value 1976 \$617,304 and 1975 \$570,036)	84,896	504,085		588,981	585,148
Furniture, equipment and improvements	110,920			110,920	106,443
Accumulated depreciation and amortization	81,991			81,991	76,851
	<u>28,929</u>			<u>28,929</u>	<u>29,592</u>
Books and portraits	26,909			26,909	26,909
	<u>\$376,736</u>	<u>\$504,156</u>	<u>\$5,354</u>	<u>\$886,246</u>	<u>\$803,146</u>

### Liabilities

Sales tax payable	\$ 64			\$ 64	\$ 11
Special Fund—"10,000 Trees"	18,623			18,623	49,288
Special Projects and 150th Anniversary Fund	320,000			320,000	195,000
Principal balance	38,049	\$504,156	\$5,354	547,559	558,847
	<u>\$376,736</u>	<u>\$504,156</u>	<u>\$5,354</u>	<u>\$886,246</u>	<u>\$803,146</u>

\*Restated to eliminate Pension Fund, see related note.

The accompanying notes are an integral part of these financial statements.

## Statement of Principal for the Years Ended June 30, 1976 and 1975

	1976				1975
	Operating Fund	Endowment Funds			Total
		Unrestricted	Restricted	Total	
Balance, beginning of year	\$ 76,925	\$476,568	\$5,354	\$558,847	\$599,346
Excess of Operating Fund revenue over expenses	86,124			86,124	2,025
Transfer to Special Projects and 150th Anniversary Fund	(125,000)			(125,000)	(25,000)
Unrestricted contributions		41,163		41,163	16,575
Loss on sale of investments		(15,675)		(15,675)	(36,399)
Life membership dues		2,100		2,100	2,300
Balance, end of year	<u>\$ 38,049</u>	<u>\$504,156</u>	<u>\$5,354</u>	<u>\$547,559</u>	<u>\$558,847</u>

The accompanying notes are an integral part of these financial statements.

continued

# Statement of Operating Fund Revenue and Expenses for the Years Ended June 30, 1976 and 1975

	1976	1975*
<b>Revenue</b>		
Membership dues	\$ 89,914	\$ 83,661
Invested funds and savings accounts	32,822	33,995
Schaffer Trust	14,086	16,237
Designated contributions	29,734	15,820
Flower and Garden Show	693,067	533,621
Preview Dinner	119,390	94,777
Fees and sales	30,188	35,990
Membership and other activities	<u>24,935</u>	<u>10,967</u>
	<u>1,034,136</u>	<u>825,068</u>
<b>Expenses</b>		
Salaries	210,324	193,184
Other employee expenses	53,137	65,200
Building maintenance and utilities	20,571	17,398
Depreciation and amortization	5,140	7,182
Administrative supplies and expense	<u>42,766</u>	<u>36,230</u>
	331,938	319,194
Less allocation of overhead to Flower and Garden Show	<u>114,075</u>	<u>99,232</u>
	217,863	219,962
Publications	57,201	57,466
Flower and Garden Show, including allocation of overhead	459,795	390,738
Preview Dinner	40,344	35,721
Library and educational programs	15,493	10,472
Membership and other activities	56,963	35,006
Bicentennial projects	71,769	70,191
Community service projects	<u>28,584</u>	<u>3,487</u>
	948,012	823,043
Excess of revenue over expenses	<u>\$ 86,124</u>	<u>\$ 2,025</u>

\*Restated to conform to current presentation.

The accompanying notes are an integral part of these financial statements.

## The Pennsylvania Horticultural Society Notes to Financial Statements

### Significant Accounting Policies

The financial statements are prepared on a modified cash basis. Marketable securities, furniture, equipment and improvements are carried at cost. Rare books and portraits are carried at 1971 ledger values, and subsequent additions to books and portraits have been charged to expense.

Depreciation of furniture and equipment is computed on the straight-line method over the estimated useful lives which range

from five to ten years. Improvements to buildings are amortized over the term of the building occupancy agreement.

Life membership dues and unrestricted contributions are added to the Unrestricted Endowment Fund, which is a Board-designated fund without restriction on principal or income.

### Investments

Operating Fund assets include securities segregated to provide a funding of the Special Projects and 150th Anniversary Fund.

In addition, the Society is the income beneficiary of a trust, under

deed of Elizabeth Schaffer, comprised of securities with a market value of \$311,487 and \$300,466 at June 30, 1976 and 1975, respectively.

### **Special Fund—"10,000 Trees"**

Contributions to the Special Fund—"10,000 Trees", an ongoing campaign to raise funds for the planting of trees in Philadelphia parks, administered by the Society, amounted to \$75,008 and \$83,134 in the years ended June 30, 1976 and 1975, respectively. The sum of \$107,234 was expended for tree planting in 1976 and \$60,440 in 1975. The balance of the Fund, \$18,623 and \$49,288, at June 30, 1976 and 1975, respectively, was deposited in a savings account, the interest on which was added to the Fund.

### **Pension Plan**

The Society has a non-contributory pension plan covering substantially all full-time employees. The Plan has been amended to conform to the Employee Retirement Income Security Act of 1974.

In July 1975, the assets of the Fund, formerly included on the Society's balance sheet, were transferred to a trustee account with a bank. So that the June 30, 1975 balance sheet may be comparable to that at June 30, 1976, the 1975 figures have been restated to eliminate the Pension Fund, which at that date amounted to \$62,950.

Pension expense under the Plan was \$20,000 in 1976 and \$39,750 in 1975. Contributions to the Fund in future years must meet required funding standards. Pending an actuarial study, the amounts of such contributions cannot be determined.

### **Building Agreement**

The Society occupies facilities in Independence National Historical Park. The provisions of the agreement

with the Department of Interior require that the Society assume responsibility for the routine operation, maintenance, and minor repairs to the interior of the building, the garden area and all related machinery and equipment. The Society is required to deposit \$100 per month in a fund for major repairs and replacements to buildings, equipment and grounds. The agreement terminates in 1983 and is renewable at the option of the Federal Government.

### **Special Projects and 150th Anniversary Fund**

During June of 1976, the Executive Council of the Society changed the name of the "Planned Public Projects and Losses Reserve Fund" to the "Special Projects and 150th Anniversary Fund." The amount of \$100,000 has been authorized to be spent on horticultural advancement in honor of the Society's 150th anniversary. Expenditures, which will not take place until the 1976-1977 fiscal year, will be charged against the Special Projects and 150th Anniversary Fund.

### **Agreement with the Neighborhood Garden Association**

For one year, starting March 1, 1976, the Neighborhood Garden Association (Association) pays the Society \$2,000 on a quarterly basis in consideration for assuming the responsibilities for execution of the "Garden Block Program." This program includes the training of personnel, maintaining relationships with block residents, visits, and maintaining accurate records. The Society assumes all costs and expenses in the implementation of the program. In addition, for the term of the contract, two members of the Association's Board are voting members of the Society's Community Activities Committee, and two members of the Society's Council serve as voting members of the Association's Board.



## other activities

### Miscellany

From July 75 to June 76 43,000 people visited Society headquarters; half that number came between April and June after the opening of the Bicentennial celebration. PHS is fortunate to be in the midst of Independence National Historical Park, which drew a large number of tourists in the spring of 1976.

In addition to the free plant clinics, our horticultural staff continued to answer hundreds of phone and letter inquiries about horticultural problems.

### Organizations Meeting at PHS Once or More During the Year

American Association of Botanical Gardens and Arboreta  
American Hemerocallis Society  
American Institute of Architects  
Bromeliophiles of Greater Philadelphia  
City Department of Recreation, Neighborhood Park Program  
Council on Botanical and Horticultural Libraries  
Delaware Valley Fern Society  
Earth Congress  
Evergreens Garden Club  
Greater Philadelphia Cultural Alliance  
Liberty Bell Chapter, American Gloxinia and Gesneriad Society

The Flower & Garden Show exhibitors gather for an evening meeting of fun and ideas at the home of William MacDowell, who chaired the Show.





Middle Atlantic Regional Lily Group,  
North American Lily Society  
National Council on Therapy and  
Rehabilitation through  
Horticulture, Annual Meeting  
Committee

Neighborhood Garden Association  
Northwestern Region, American  
Orchid Society

Cooperative Extension Service,  
Pennsylvania State University  
Pennsylvania Bonsai Society

Philadelphia Chapter, American  
Rhododendron Society

Philadelphia Chapter, American  
Rose Society

Philadelphia Chapter, Indoor Light  
Gardening Society

Philadelphia Committee, Garden  
Club of America

Philadelphia Convention and  
Visitors Bureau—Guides  
Orientation

Society of American Archivists  
Toronto Civic Garden Center

### **Staff members Attended or Participated in Meetings of the Following Organizations**

Advisory Committee—Horticultural  
curriculum for Abraham Lincoln  
High School

American Association of Botanical  
Gardens and Arboreta

American Bonsai Society

American Horticultural Society

\*John Bartram Association

Conservation Fair, Wissahickon  
Valley Watershed Association



# other activities continued

Delaware Valley Chapter, American  
Rock Garden Society  
Delaware Valley Regional Planning  
Commission, Year 2000  
Committees  
\*Earth Congress  
4-H Development Council  
Friends of Rittenhouse Square  
\*Garden Writers Association of  
America  
Gardens of Greater Olney  
Governor's Anti-inflation Annual  
Dinner  
\*Greater Philadelphia Cultural  
Alliance  
International Plant Propagator's  
Society  
International Shade Tree Symposium  
Kingscott Associates, Inc.  
\*National Association of Public  
Exposition Managers  
\*National Council for Therapy and  
Rehabilitation Through  
Horticulture  
\*Neighborhood Garden Association  
North American Lily Society,  
Convention Committee  
Pennsylvania Bonsai Society  
Pennsylvania Environmental Council  
Pennsylvania Nurserymen's  
Association, Inc., Eastern Region  
Philadelphia Chapter, American  
Rhododendron Society  
Philadelphia Chapter, Indoor Light  
Gardening Society of America  
\*Philadelphia County Extension  
Service, Executive Committee  
Philadelphia Public Relations  
Association  
Society of Professional Journalists,  
Sigma Delta Chi  
\*Women in Communications, Inc.

\*Served on Governing Body.

## PHS Staff

Charlotte L. Archer  
Members Activities Coordinator  
Suzanne M. Block  
Secretary  
J. Blaine Bonham, Jr.  
Community Gardening Programs  
Director  
Jean Byrne  
Editor  
Grace M. Cole  
Membership Secretary  
Denise Durinzi  
Secretary  
Patricia M. Durinzi  
Administrative Assistant  
William F. Herbert  
Bookkeeper  
F. Evelyn Hett  
Flower Show Secretary  
Benjamin Johnson  
Custodian  
Carol V. Lindemann  
Secretary  
Edward L. Lindemann  
Horticulturist  
Valerie S. Martin  
Community Activities Field  
Representative  
James P. McCarvill  
Flower & Garden Show Manager  
Julia L. Morris  
Horticultural Librarian  
Marie Rodia  
Receptionist  
Carol Sclafani  
Field Horticulturist  
Jane Talarico  
Library Assistant  
Theodora Welgoss  
Bicentennial Projects  
Director  
Honora Wesley-Burke  
Book Restorer  
Mary Williams  
Housekeeper





