




YELL-O-JAK

1949





Digitized by the Internet Archive
in 2015

<https://archive.org/details/yellojak19491949gibs>

THE YELL-O-JAK



OF 1949

PUBLISHED BY THE STUDENTS OF
GIBSONVILLE HIGH SCHOOL

BOBBY RUDISILL
Editor-in-Chief

BARBARA WILSON
Business Manager



FOREWORD

The YELL-O-JAK staff is happy in presenting to the students of Gibsonville High School this true-to-life record containing potent facts and photographs of the past year's activities.

Through a capable and persevering administration, we feel, this year, that we have attained social, scholastic, and moral developments never before achieved by the students of G. H. S.

We have striven to make these records so vivid that those who have had a part in producing them will ever cherish and remember each accomplishment.



DEDICATION

To show our appreciation for their interest and timeless efforts, we, the Senior Class of 1949, dedicate this issue to Mrs. R. H. Wynne, our class sponsor, and Mr. Gerald D. James, our principal. Underlying the past year's accomplishments and improvements was the force of leadership, straightforwardness, and initiative that was originated and developed by their combined qualities, capabilities, and humane characters. Because of their guidance, we feel that we are christened potentialities, better prepared to travel the road of life and overcome the handicaps, snares, and pitfalls of a complicated world.

It is with grateful thanks that we devote these last records to these two great personages who have had a decided hand in making our up-to-the-minute success possible.

FACULTY



Top Row, Left to Right:



Bottom Row, Left to Right:

MR. H. L. BOWLING
Trades and Industry

MRS. MARJORIE MADREN
Biology, Algebra, and Geometry

MISS AMY CAMPBELL
French, English, and Health



MISS LANNIE MCINTYRE
Home Economics Dept.

MR. J. S. CASEY
*Civics, Mathematics, History, and
Athletic Director*

MRS. I. H. VICKERY
Commercial Dept.

MR. GERALD D. JAMES
Principal



MRS. R. H. WYNNE
English

YELL-O-JAK STAFF



Sitting, Left to Right:

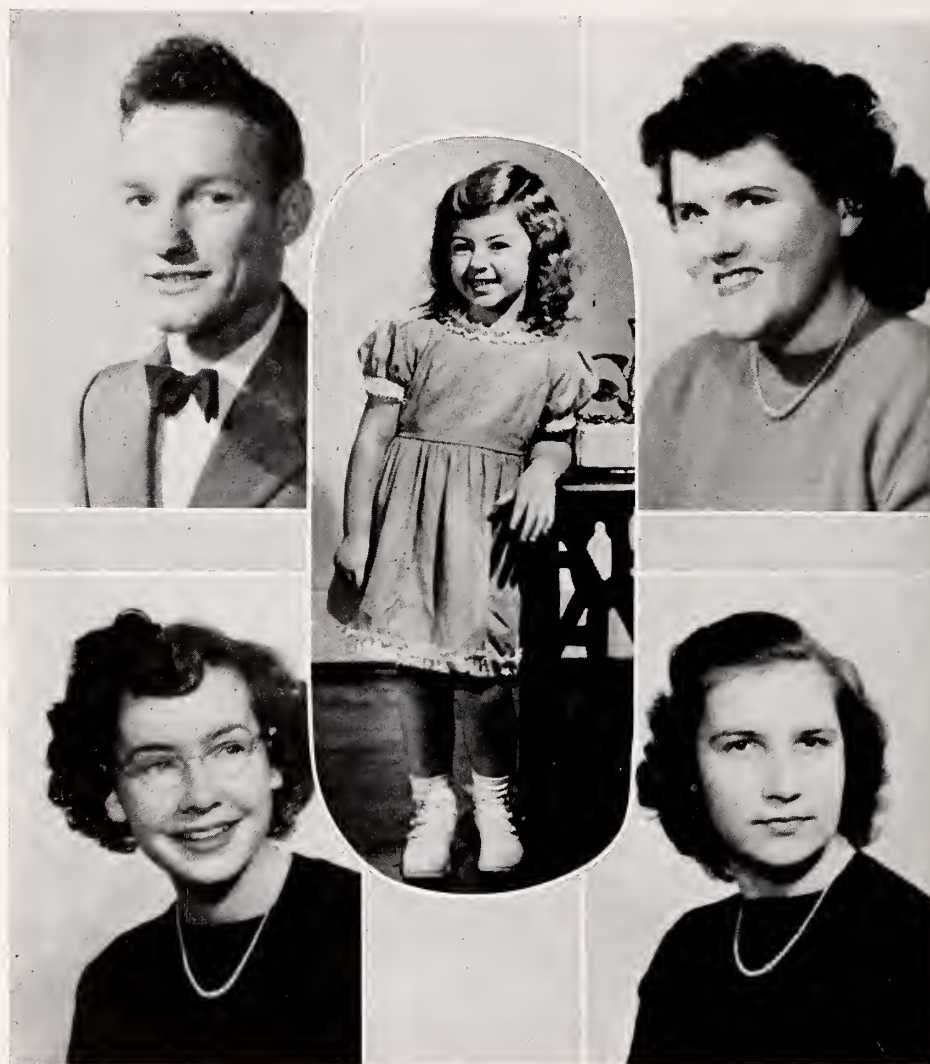
Joan Cates
 Barbara Wilson
 Carol Love
 Carolyn Barber
 Bobby Rudisill
 Frank Montgomery
 Jennings Randolph



Standing, Left to Right:

Miss Lannie McIntyre, Adviser
 Virginia Baldwin
 Helen Smith
 Tommy Andrews
 Nancy Hoffman
 Harlin Matkins
 Nelda Allen
 Richard Huffman
 Virginia Whitesell
 Mary Ingle
 Jack Smith
 Thelma Sears
 Shirley Ingle
 Sue Haley

SENIOR CLASS OFFICERS



HARLIN MATKINS
President

KAY EVANS
Mascot
Daughter of Mr. and Mrs.
A. D. Evans. Age 3.

CAROL LOVE
Vice-President

SUE HALEY
Secretary

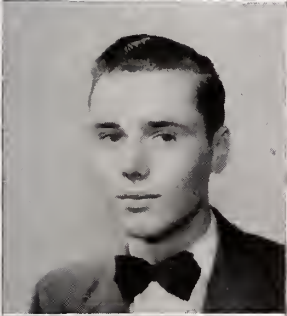
SHIRLEY INGLE
Treasurer

SENIORS



NELDA ALLEN

YELL-O-JAK Staff 4; Superlative 4; Photography Club, Vice-President 4; Basketball 3; F.H.A. Club 2; Glee Club 3, 4; Cafeteria Helper 4.



TOMMY ANDREWS

YELL-O-JAK Staff 4; Glee Club 3, 4.



VIRGINIA BALDWIN

YELL-O-JAK Staff 4; *Black and Gold* Staff 4; Photography Club, Sec. 4; F.H.A. Club 3, 4; Glee Club 3, 4; Cafeteria Helper 4.



LUCY BYRD

Photography Club, Treas. 4; F.H.A. Club 2; Glee Club 3, 4.

JOAN CATES

YELL-O-JAK Staff 4; Superlative 4; Beta Club 3, 4; Sec. 4; Junior Class Play 3; F.H.A. Club 2; Librarian 3, 4.

BILLY CHILDERS

Football 2, 3, 4; Baseball 1, 2, 3, 4; Superlative 4; Monogram Club 3, 4; Athletic Association 1, 2, 3.

RUBY COOK

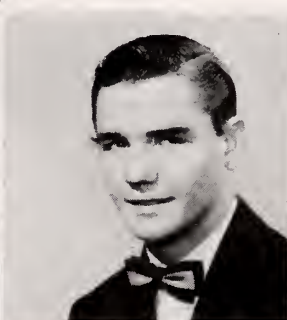
Junior Class Play 3; Glee Club 3, 4.

LUCY FOGLEMAN

Black and Gold Staff 4; Photography Club 4; F.H.A. Club 2; Glee Club 3, 4.



Joan Cates



Billy Childers



Ruby Cook



Lucy Fogleman

SENIORS



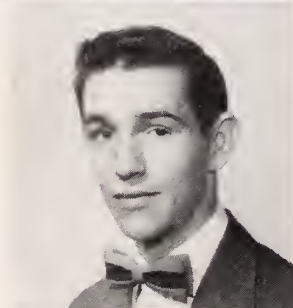
VANCE FOUST

Black and Gold Staff 4; Superlative 4; Bus Driver 4; Glee Club 4; Cafeteria Helper 1.



SUE HALEY

YELL-O-JAK Staff 4; Class Prophet 4; Beta Club 3, 4, Treas. 4; Basketball 1, 2; Commencement Marshal 3; Sec. Senior Class 4; Librarian 1, 2, 3, 4; F.H.A. Club, Sec. 2; Glee Club 4; Athletic Association 1, 2.



ROBERT HINTON

Football 3, 4; Basketball 3, 4; Superlative 4; Monogram Club 3, 4; Athletic Association 3.



NANCY HOFFMAN

YELL-O-JAK Staff 4; *Black and Gold* Staff 4; Class Historian 4; Superlative 4; Beta Club 3, 4, Vice-Pres. 4; Junior Class Play 3; F.H.A. Club 2; Glee Club 4.

RICHARD HUFFMAN

YELL-O-JAK Staff 4; Basketball 1, 2, 3, 4; Football 2, 3; Baseball 1, 2; Monogram Club 3, 4; Athletic Association 1, 2, 3.

MARY INGLE

YELL-O-JAK Staff 4; Superlative 4; Basketball 1; Junior Class Play 3; F.H.A. Club 2; Glee Club 3, 4.

SHIRLEY INGLE

YELL-O-JAK Staff 4; Basketball 1, 2, 3; Commencement Marshal 3; Cheerleader 4; F.H.A. Club 2; Sec. Treas. Junior Class 3; Treas. Senior Class 4; Glee Club 1, 2; Cafeteria Helper 1, 2; Athletic Association 1, 2, 3.

CAROL LOVE

YELL-O-JAK Staff 4; *Black and Gold* Staff 4; Superlative 4; Vice-Pres. Senior Class 4; Junior Class Play 3; F.H.A. Club 2; Glee Club 4.



Richard Huffman



Mary Ingle



Shirley Ingle



Carol Love

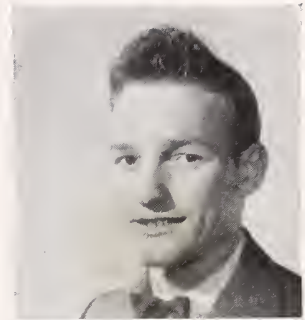
SENIORS

FRANK MONTGOMERY

Safety Patrol 3, 4; *Black and Gold* Staff 4; Photography Club 4.

HARLIN MATKINS

YELL-O-JAK Staff 4; Editor-in-Chief of *Black and Gold* Staff 4; Basketball 2; Football 4; Baseball 2; Superlative 4; Junior Class Play 3; Commencement Marshal 2; Athletic Association 2.



ROBERT PRUET

Football 3; Basketball 1; Junior Class Play 3; Cafeteria Helper 1.

CARL MAY

Basketball 3, 4; Football 4; Baseball 2, 3, 4; Superlative 4; Monogram Club 3, 4; Athletic Association 2, 3.



JENNINGS RANDOLPH

YELL-O-JAK Staff 4; Junior Class Play 3; Safety Patrol 3; Bus Driver 3, 4; Glee Club 2, 3, 4; Athletic Association 2.

FRANCES MILES

Black and Gold Staff 4; Basketball 3; Junior Class Play 2; F.H.A. Club 2, 3, 4; Athletic Association 2, 3.

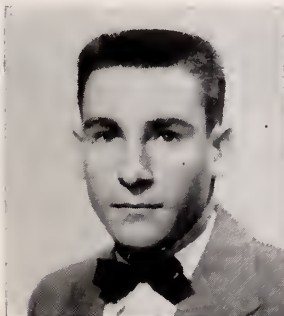


BOBBY RUDISILL

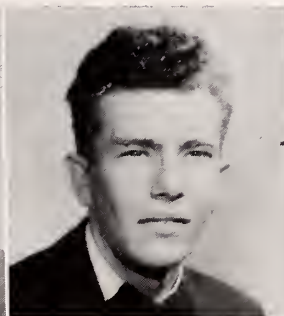
YELL-O-JAK Staff 4; *Black and Gold* Staff 4; Superlative 4; Beta Club 3, 4; Pres. 4; Football 2, 3, 4; Basketball 2; Baseball 1; Junior Class Play 3; Commencement Marshal 3; Monogram Club 3, 4; Glee Club 4; Athletic Association 2, 3.

HAZEL MILES

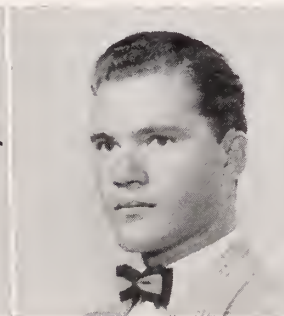
Photography Club 4; F.H.A. Club 2; Glee Club 3, 4.



Bobby Rudisill



Jennings Randolph



Robert Pruet



Frank Montgomery

SENIORS



THELMA SEARS

YELL-O-JAK Staff 4; Superlative 4;
Junior Class Play 3; Librarian 3;
F.H.A. Club 2; Glee Club 2, 3.



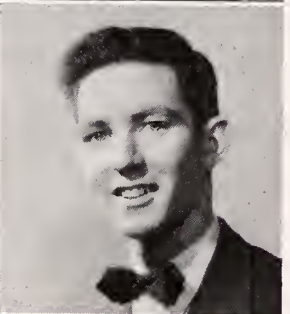
DORIS SIMPSON

Black and Gold Staff 4; Photog-
raphy Club Sec. 4; F.H.A. Club 2,
4.



HELEN SMITH

YELL-O-JAK Staff 4; Photography
Club Pres. 4; F.H.A. Club 2; Glee
Club 3, 4; Cafeteria Helper 4.



JACK SMITH

YELL-O-JAK Staff 4; Superlative 4;
Beta Club 3, 4; Basketball 3, 4;
Football 4; Junior Class Play 3;
Athletic Association 2, 3; Mono-
gram 4.



Virginia Whitesell



Barbara Wilson

VIRGINIA WHITESELL

YELL-O-JAK Staff 4; F.H.A. Club 2;
Glee Club 2, 3, 4; Cafeteria Helper
2, 3.

BARBARA WILSON

YELL-O-JAK Staff 4; Superlative 4;
Cheerleader 3, 4; Commencement
Marshal 3; F.H.A. Club 2; Glee
Club 2, 3, 4.

CLASS HISTORY

In the fall of 1945 a new group of eager, ambitious freshmen entered Gibsonville High School. With thoughts of six different classes, "oodles" of teachers, and freshmen rights, we began our high school career. Some of the boys began their sports careers by playing basketball and baseball. That was the beginning of four long, thrill packed years for those sports-minded boys. The girls (which we musn't forget), along with the "fellows," soon began to feel at home with their upper classmen. As the year progressed, and the "mighty hands" of Principal H. S. Shepherd, Mr. Colon Hancock, and Miss Irene Meador proved invaluable to us—sixty-six to be exact—"green" Frosh. We adjourned in the Spring, eagerly awaiting the next year.

After a very pleasant summer we entered our second year, confident that all traces of "greenness" were gone. We girls felt very lucky indeed when we were given Miss Lannie McIntyre, a new home economics teacher, along with Mr. H. S. Bowling to instruct the boys in trades and industry. Sports were again enjoyed by both boys and girls. The fairer sex gained much pleasure by becoming the first Future Homemakers of America. The class as a whole felt proud as different members were elected into the Beta Club, Monogram Club, and F.H.A. Club. Our class was now much smaller with only forty-six students. Mercifully we all sweated through Julius Ceasar that year. As the year moved to a close, we marvelled at our great success under the leadership of Jake Overman, president; Billy Earl Overman, vice-president; and Sue Haley, secretary-treasurer.

Our third year opened with a bang with all members of the previous year present. As "second best" Juniors our thoughts turned to class rings, the Junior-Senior banquet, and the Junior class play. Ronald Bridges, Jake Overman, and Shirley Ingle were elected president, vice-president, and secretary-treasurer respectfully. Mr. Homer Keever, our homeroom teacher, proved to be most helpful in assisting us with our most important projects—the class play, "Apple Blossom Time," the annual banquet, and a trip to the state capitol. Although the arrival of our class rings brought many "ohs and ahs," smiling faces were seen around ole G. H. S. again after a few "tearful" days. With all projects completed with glorious satisfaction, the Juniors disbanded for a delightful summer vacation to await their turn at the "top rung" of the ladder the next term.

At last, after three long, hard-fought years, twenty-nine students, fully conscious of the responsibilities that were soon to befall them, entered into their final year. Competent officers were elected with Harlin Matkins in the president's spot, Carol Love in the secondary as vice-president, Sue Haley taking the "bookkeeping" spot as secretary, and Shirley Ingle managing the books as treasurer to keep account of the million dollars we expected to make. With the resignation of our former principal we were given Mr. Gerald D. James to guide us through our most important year. Enjoying "Senior privileges" and being honored by the Junior class with the Junior-Senior banquet at the Alamance Hotel, we then really felt like the "respected Seniors" we were supposed to be.

Work on the YELL-O-JAK, annual yearbook, the *Black and Gold*, school newspaper, and various other activities required much of our time. In May we went to Washington, D. C. on a five day tour, accompanied by Mr. James. Our Senior play, "Hold Everything," went over with a bang under the famed leadership of Mrs. R. H. Wynne, our home room teacher. Commencement exercises in the Spring climaxed a year of hard work.

And now, with farewell tears in our eyes and precious everlasting memories in our hearts, we leave old G. H. S. where we have built up many pleasant memories for the future.

NANCY HOFFMAN,
Historian.

LAST WILL AND TESTAMENT

STATE OF NORTH CAROLINA
GUILFORD COUNTY
City of Gibsonville
Gibsonville High School

WE, THE SENIOR CLASS OF 1949, considering ourselves the best class ever to enter, leave, or otherwise come in contact with the finest school in Guilford County, having added new crevices to our brains by wading through "Macbeth," "A Midsummer Night's Dream," "Silas Marner," and a million and one themes, and still being of sound body and excellent mind, do hereby declare this to be our last will and testament, to be executed in the following order:

ARTICLE I, To the Faculty

- Item I*—To the principal, Mr. James, we leave a can of wax polish and all the hopes our little hearts can muster that he may add more polish to our much improved school.
- Item II*—To Mrs. Wynne we leave a fine tooth comb to be used for the sole purpose of having her hair combed on study halls. With the comb we extend our hand in gratitude and thanks.
- Item III*—To Miss Campbell we leave our hopes that more handsome men teachers (like Mr. Casey) will enter our school staff.
- Item IV*—To Mrs. Madren we leave a vacuum cleaner. Quote Mrs. Madren, "I have the 'messingess' bunch of pupils in this school." Unquote.
- Item V*—To Mr. Casey we leave our study halls. (Relax coach, you'll get your chance.)
- Item VI*—To Mrs. Vickery we leave a pair of sound proof ear muffs. (No hope, 'teach,' scientists still unable to produce silent typewriters.)
- Item VII*—To Mr. Bowling we shake the saw dust from our heads and leave it as a memory of our shop work.
- Item VIII*—To Miss McIntyre we leave the labor, heartaches, backaches, and slavings of next year's annual. (May God bless her.)
- Item IX*—To all teachers in general we leave our hopes of better years to come.

ARTICLE II, To The Classes

- Item I*—To the '49-'50 Senior class we leave our caps and gowns along with a pile of battered text books.
- Item II*—To the '49-'50 Junior class we leave "Moby Dick," themes, broken pencils, and our crossed fingers.
- Item III*—To the '49-'50 Sophomore class we leave "Silas Marner," "MacBeth," and boots with which to wade through them.
- Item IV*—To the '49-'50 Freshman class we leave a bit of encouragement, "Fear not, your days shall not be long."

ARTICLE III, To The Individuals

- Item I*—Hazel Miles leaves her quietness in school to Edna Whitesell.
- Item II*—Nelda Allen wills a pack of red dentyne chewing gum and her ability to pop it to Peggy Thomas.
- Item III*—Mary Ingle leaves her ability to blush to Margaret Kellis.
- Item IV*—Frances Miles leaves her "Miles" of tallness, to Emma Lou Soekwell.
- Item V*—Lucy Fogleman wills her shortness to Ruby Jean Hudgins.
- Item VI*—Robert Hinton leaves his football suit to Harold Scott.
- Item VII*—Virginia Baldwin wills her smile and various hair-dos to Mary Sue Dunn.
- Item VIII*—Tommy Andrews leaves his dancing ability to James Thomas.
- Item IX*—Jack Smith leaves his good times to Jack Flynn.
- Item X*—Ruby Cook leaves her ability to do two themes in one night to Betty Lou Dunn.
- Item XI*—Virginia Whitesell leaves her long blond hair to Monte Hinton.
- Item XII*—Jennings Randolph leaves his time-proven bus to Floyd Doby.
- Item XIII*—Carl May leaves his carefree ways to Donald Allred.
- Item XIV*—Helen Smith leaves her ability to capture boy friends to Shirley Grayson.
- Item XV*—Lucy Byrd bequeaths her freckles to Patricia Faucette.
- Item XVI*—Joan Cates leaves her unexcelled energy to Thelma Younger.
- Item XVII*—Vance Foust leaves his hard starting No. 2 bus to Madison Klotz.
- Item XVIII*—Shirley Ingle bequeaths her reputation as a big mouth cheerleader to Marlene Gerringer.
- Item XIX*—Bill Childers leaves his position on the football team to Benny "The Meat Ball" White.
- Item XX*—Carol Love bequeaths her black hair to Nellie Gray Levens.
- Item XXI*—Barbara Wilson leaves her happy-go-lucky feelings to Clara Boone.
- Item XXII*—Doris Simpson leaves her ability to catch Mr. James' attention on Economics class to Norma Jean Reid.
- Item XXIII*—Harlin "O" Matkins leaves his Irish fighting spirit on the football field to Lloyd Cheek.
- Item XXIV*—Nancy Hoffman leaves her sharp reaction answers to all jokes to Carolyn Barber.
- Item XXV*—Sue Haley leaves her drape shape to Arbutus Johnson.
- Item XXVI*—Thelma Sears leaves her flirting (gee, I can't help it) ability to Eugenia Trogdon.
- Item XXVII*—Bobby Rudisill leaves his love for 'opposum hunting to Dolly Mae Westmoreland.
- Item XXVIII*—Richard Huffman leaves the basketball team to "Beefy" Farrington.
- Item XXIX*—Bob Pruet leaves his air of importance to Odell Dowd.
- Item XXX*—Frank Montgomery leaves the school movie projector to Harold Younger.

Written, signed, sealed, and delivered this, the 23rd day of November, anno domini, one thousand nine hundred and forty-eight.

Witnesses:

MISS LANNIE MCINTYRE, Adviser.
MR. GERALD D. JAMES, Principal.

HARLIN MATKINS, Testator.

SENIOR CLASS PROPHECY

Nelda Allen will go to California to be a beauty operator for movie stars at Twentieth Century Fox.

Lucy Mae Byrd has chosen marriage for her life-time career and will probably maneuver herself to that great metropolis, McLeansville.

Ruby Cook will be another "Clara Barton" army nurse.

Tommy Andrews will someday return to old Gibsonville High where he will begin his teaching career by relieving Mrs. Wynne.

Carol Love is going to California to be a secretary for a good looking boss or maybe a handsome movie star, who knows?

Frances Miles will live near Blue Circle and help manage Moser's Furniture Store.

Billy Childers will be an All-American football hero in 1951.

Virginia Baldwin will be none other than Whisett's No. 1 beauty operator.

Joan Cates will motor west, marry a rancher with an exclusive dude ranch, and have four colts of her own if her luck doesn't run out.

Mary Ingle will be another "Florence Nightingale" to carry stars and stripes as a Navy Nurse.

Helen Smith will work in Long's Finishing Mill in Burlington until she succeeds in finding a "man."

Vance Foust will be Greensboro's manager of the A & P meat market.

Lucy Fogleman is advertising for a farmer husband from the "sunny state"!

Sue Haley, as fate will have it, will go to W. C. to study art for designing at exclusive Bonds.

Dickie Huffman, upon returning from the Army Air Corps, will be the owner and editor of *The Gibsonville Daily News*.

Nancy Hoffman will make a rather nice little business woman for Horace.

Shirley Ingle will be the feminine Perc Westmore of M. G. M. as a cosmetologist.

Virginia Whitesell is going to be a famed Power's model.

Hazel Miles will participate in matrimony and travel over the forty-eight states with Elmer.

Doris Simpson will be the beauty operator whose sign reads, "You, too, can be beautiful!"

Barbara Wilson will be found with a "white collar" job on a handsome boss' knee.

Harlin Matkins will enter a technical university or trade school, then settle down to rear a football team of red-headed boys.

Thelma Sears has a look in her future that will reveal Ben Franklin's manager and hubby Benny.

Jack Smith will own a Pan-American Air Line and establish the main office in Gibsonville, North Carolina.

Jennings Randolph will be the future undertaker of Loman and Key.

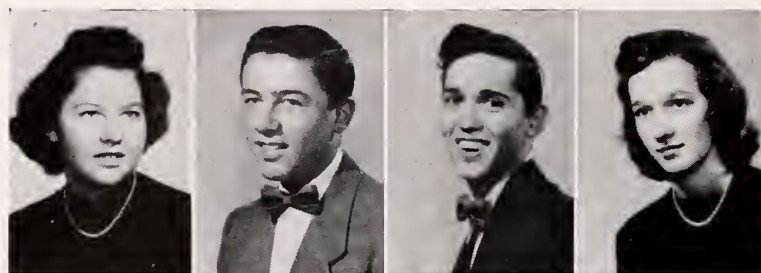
Bobby Rudisill will go to Duke University and play football, then return perhaps to Gibsonville to marry and teach science and mathematics.

Robert Pruet, on returning from the Army, will probably go to college in Florida to continue his education.

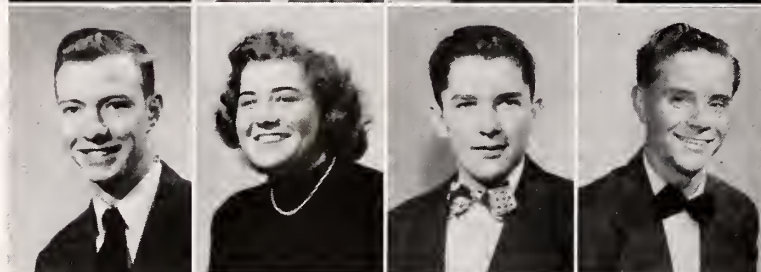
Carl May will someday own and operate a Gibsonville Municipal Airport.

Robert Hinton will accept an invitation to wear the white and blues of Uncle Sam's Navy.

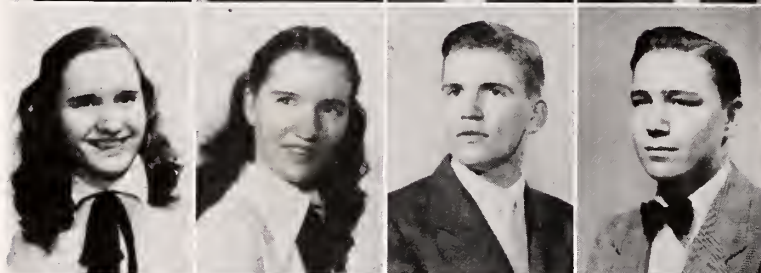
JUNIORS



BETTY LOU ALLEN
DONALD ALLRED
C. J. BALDWIN
CAROLYN BARBER



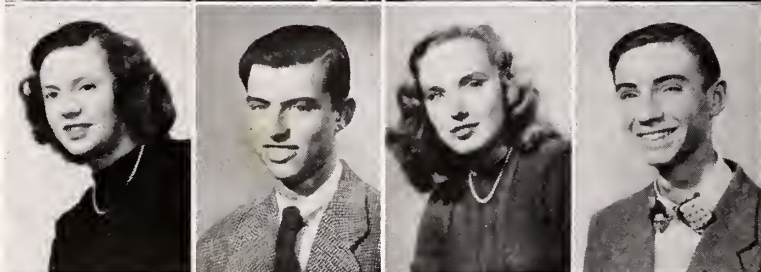
BRAXTON BELVIN
CLARA BOONE
LLOYD CHEEK
FLOYD DOBY



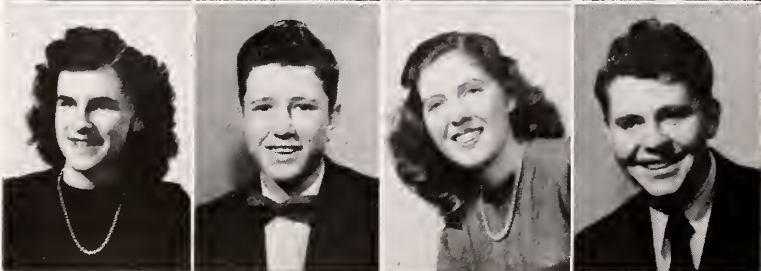
BETTY LOU DUNN
MARY SUE DUNN
JOHN DAWSON
ODELL DOWD



PAT FAUCETTE
JACK FLYNN
MARLENE GERRINGER
HAZEL GILLISPIE



SHIRLEY GRAYSON
HAROLD HAWKS
MONTE HINTON
PAUL HOWERTON



RUBY HUDGINS
CARSON INGLE
MARGARET KELLIS
MADISON KLOTZ

JUNIORS

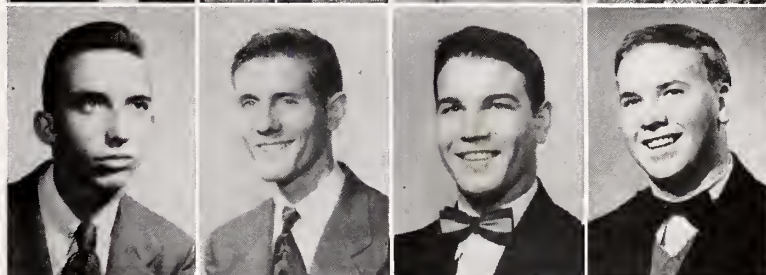
EVELYN LEDBETTER
 NELLIE GRAY LEVENS
 THOMAS MANN
 LUCILLE MILES



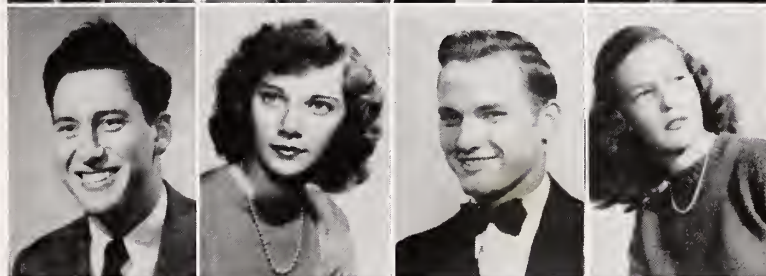
BILLY MURRELL
 JIM PETTIGREW
 NORMA JEAN REID
 BOBBY LEE RILEY



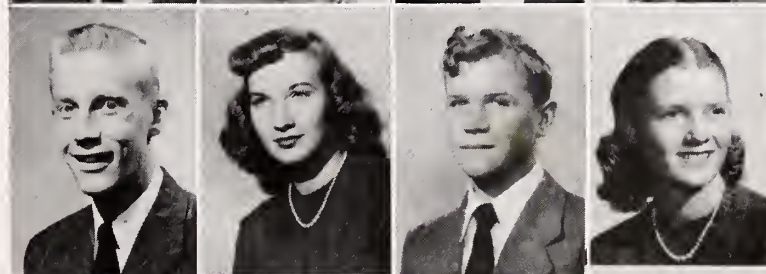
MELVYN RILEY
 DAVID ROBERTS
 JACK ROOK
 HAROLD SCOTT



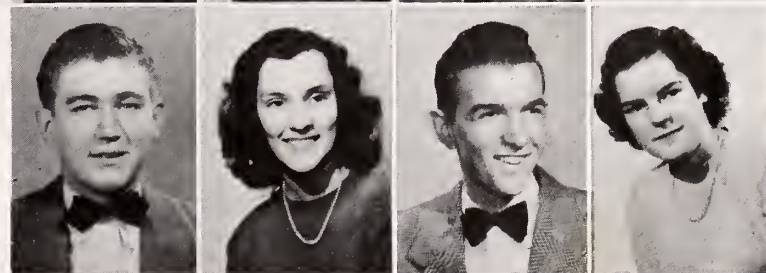
JERRY SHEPHERD
 EMMA LOU SOCKWELL
 JAMES THOMAS
 PEGGY THOMAS



RALPH THOMPSON
 EUGENIA TROGDON
 PAUL WAGONER
 DOLLY WESTMORELAND



BEN WHITE
 EDNA WHITESSELL
 HAROLD YOUNGER
 THELMA YOUNGER



SOPHOMORES



Bernard Butler
Judy Christman
Walter Craddock
Bobby Farrington

Billy Folgeman
Bobby Gerringer
Earl Hancock
Thomas Holt

Joan House
Larry Hughes
Jeanette Ingle
Ruth Ingle

Horace Isley
Harold Johnson
Peggy Johnson
Arbutus Johnson

Kenneth Johnson
Grace Loye
Bobby Manness
Hazel Murph

Alva Randleman
Annabell Smith
Peggy Smith
Sandra Talley

James Reid Thomas
Norma Webster
Minnie Jean Welch
Eugene Wheeler

Rebecca Whitesell
Jackie Wilson
Johnnie Faye Wilson
Jeanette Younger

FRESHMEN



La Rue Allen
 Betty Gray Andrews
 Franklin Apple
 Lloyd Apple

Elaine Baldwin
 Ralph Ball
 Arnold Beckom
 Herbert Belvin

Annie Brothers
 Richard Brothers
 Vallie Brown
 Eloise Bull

Edna Byrd
 Elsie Clapp
 Larry Clapp
 Nancy Clapp

Billy Creasy
 Shirley Dawson
 Pansy Dunn
 Erma Dell Friddle

Bobby Gerringer
 Nancy Gilliam
 Patsy Gillispie
 Donna Lee Greeson

Betty Gene Grigg
 James Grigg
 Edward Hamilton
 Carl Dean Hawks

Kay Hawks
 Haywood Ingle
 J. D. Ingle
 Wade Ingle

FRESHMEN



Jean Isley
J. W. Johnson
Sweetie Justice
Marion Ledbetter

Buddy Long
Celia Gray May
Robert McCormick
Lyndon McKinney

Donald Overman
Mary Reavis
Sue Reid
Curry Ridge

Dolly Mae Ring
Betty Lou Shoe
Earl Simpson
Barbara Smith

Thomas Smithey
Charles Robert Sockwell
Betty Soots
Bobby Summers

George Summers
Kenneth Sutton
Rachel Sutton
Deloris Toler

Edlee Ward
Betty Whitesell
Vivian Wicker
Paul Wyrick

Sylvia Wyrick
Betty Lou Younger



BETA CLUB



Back row, left to right: Mrs. R. H. Wynne (Adviser), Sue Haley, Bobby Rudisill, Jack Smith, James Thomas, Odell Dowd, Dolly Westmoreland. *Front row:* Joan Cates, Nancy Hoffman, Evelyn Ledbetter, Betty Allen, Mary Sue Dunn.

F. H. A.



Miss Lannie McIntyre, (adviser), Elsie Clapp, Donna Lee Greeson, Dolly Westmoreland, Emma Lou Sockwell, Hazel Murph, Betty Soots, Frances Miles, Ruth Ingle, Peggy Johnson, Norma Webster, Eloise Bull, Monte Hinton, Eugenia Trogdon, Mildred Fesperman, Betty Whitesell, Betty Younger, Betty Lou Dunn, Doris Simpson.

SAFETY PATROL



Back row, left to right: Melvyn Riley, Bobby Johnson, Lloyd Cheek. Front row: Harold Scott, Bobby Flynn, Roland Shepherd, Harold Younger, Mr. Ellington, Chief of Police.

BUS DRIVERS



Left to right: Madison Klotz, Buck Foust, Floyd Doby, Jennings Randolph, Jerry Shepherd, David Roberts, Billy Murrell, Paul Wagoner, Odell Dowd.

MONOGRAM CLUB



Back row, left to right: Mr. J. S. Casey (Coach), Robert Hinton, Ben White, Jack Smith, Billy Childers, Lloyd Cheek, James Thomas, Billy Murrell, Richard Huffman, Bobby Rudisill, Jim Pettigrew. *Second row, left to right:* Arnold Beckom, Harlin Matkins, Herbert Belvin, Jack Flynn, Bobby Maness, Ralph Thompson, Donald Overman. *Front row:* Horace Isley, Bobby Gerringier, Carl May, Donald Allred, Braxton Belvin.

PHOTOGRAPHY CLUB



Back row, left to right: Mr. Harry L. Bowling (Adviser), Lucy Byrd, Helen Smith, Nelda Allen, Virginia Baldwin, Ruth Ingle, Doris Simpson. *Second row:* Jackie Wilson, James Reid Thomas, Paul Wyrick, Bernard Butler, Larry Hughes. *Front row, left to right:* Lyndon McKinney, Thomas Mann, Billy Murrell, Paul Wagoner, Lloyd Cheek, Billy Kent Creasy, Charles Sockwell.

GLEE CLUB



The Gibsonville High School Glee Club, under the direction of Miss Winifred Barney, is composed of 43 voices which includes the Boys' Chorus, Girls' Chorus, and a Mixed Chorus.

At Christmas, the Glee Club presented a program for the P. T. A., a cantata, entitled "Childe Jesus."

Because this is Miss Barney's first year in organized Glee Club work, we, the students of Gibsonville High School, feel that next year we will have a club that has shown much progress and one of which we will be proud.

The Glee Club has many more activities planned for the remainder of the year. With the assistance and interest of the P. T. A. and the community, it hopes to make music a vital part of the high school curriculum.

BLACK AND GOLD STAFF



Standing, left to right: Virginia Baldwin, Frank Montgomery, Lloyd Cheek, Doris Simpson, Lucy Fogleman, Bobby Riley, Eugenia Trogdon, Carolyn Barber, Johnny Wilson, Celia May, Marlene Gerringer, Jerry Shepherd, Mrs. Vickery (adviser), Margaret Christman, Nancy Hoffman. *Sitting:* Vance Foust, Bobby Rudisill, Frances Miles, Evelyn Ledbetter, Harlin Matkins, Carol Love.

OUR SCHOOL NEWSPAPER BLACK AND GOLD

The *Black and Gold*, a monthly publication, serves as a medium for literary endeavor, as well as the official newspaper of the school. Those students who are interested in writing as an extra-curricular activity receive valuable training through their experience on the *Black and Gold* Staff. Under the excellent leadership of Harlin Matkins, Editor, the *Black and Gold* Staff has had a very successful year.

Black and Gold, the voice of the students.

CHEERLEADERS



Left to right: Barbara Wilson, Shirley Ingle, Joan House, Kenny Sutton, Jeanette Ingle, Shirley Grayson, Nancy Gilliam, Jerry Shepherd, Leader.

SCHOOL SONG

Gibsonville, proudly your loyal students
Sing your praise, joyful in song
Gibsonville we will be ever faithful
Through the years, making you strong.
Gibsonville, fondly we hail your colors
Black and gold etched in the sky.
Though far from home our steps may roam
We'll always be true to Gibsonville High.

THE YELLOW JACKETS



First row, left to right: Robert Hinton, Jack Smith, Billy Childers, Richard Huffman, Bobby Rudisill, Bobby Manness. Second row: Jack Flynn, Jim Pettigrew, Braxton Belvin, Ben White, Billy Murrell, Carl May. Third row: Ralph Thompson, Jack Rook, James Thomas, Bobby Farrington, Arnold Beckom, Bobby Gerringer, Bobby Summers. Fourth row: Bobby Gerringer, Horace Isley, Donald Allred, Larry Clapp, Lloyd Cheek, Donald Overman, Mr. J. S. Casey (Coach), Herbert Belvin, Manager. (Harlin Matkins, Carson Ingle not shown.)

In the hot August sun of 1948 some twenty odd male students of Gibsonville High met on the athletic field and began work on what was to be the 1948 edition of the Yellow Jackets. After a hard week of conditioning, they brought out the equipment and really got down to business. This early practice paid off as the boys established the best record that has been left here in the three years we have played football. They finished the season with a record of four victories, three losses, and two ties.

SCORES

Gibsonville	20	Summerfield	6
Gibsonville	0	Thomasville	0
Gibsonville	12	Alta-Ossipee	6
Gibsonville	6	Trinity	32
Gibsonville	26	Alex. Wilson	6
Gibsonville	18	Guilford	12
Gibsonville	6	Mebane	6
Gibsonville	6	Bessemer	12
Gibsonville	0	Graham	31
	94		111



BOYS BASKETBALL



Foreground: Dickie Huffman. First row, left to right: Carl May, Robert Hinton. Second row: Bobby Gerringer, Jack Smith, Donald Allred, Bernard Butler. Third row: Herbert Belvin, Bobby Farrington, Donald Overman, Coach J. S. Casey.

Among the boys of Gibsonville High in the opening session of basketball play, there came a flaming inspiration to stick with the "big five." Although the loyal supporters were a mere handful, Coach J. S. Casey strove to build them into a mighty team capable of competing in county-wide competition. A tribute must be paid to these boys who were proud and strong-minded enough to refuse to allow the books of G. H. S. to be marred with defeat.

It is with great pride that we acknowledge one of our leading teammen as highest scorer in Guilford County competition. Dickie Huffman, tall and tricky, flashed forth in every game to net a total of 196 points for the season, topping all other competitors by a slight majority. But there were others who were outstanding as well. Don Allred, Bobby Farrington, Bobby Gerringer, Carl May—all were leading factors in the play-by-play. Although exceptional praise is given only a chosen few, the team as a whole were "in there pitching."

As we turn away from one year and look toward the future, there is much to be said of possibilities. It is not only probable but reasonably possible that G. H. S. is in sight of a great "surge." A dream of basketball glory is in the air, and our many potential supporters are on the move to make that dream reality.

Gibsonville		SCORES	Opponents	
Gibsonville	23	McLeansville	26	
Gibsonville	33	Besemer	45	
Gibsonville	26	Monticello	22	
Gibsonville	32	Aycock	30	
Gibsonville	27	Guilford	45	
Gibsonville	47	Rankin	35	
Gibsonville	40	Pleasant Garden	41	
Gibsonville	54	Nathaniel Greene	41	
Gibsonville	29	Alamance	55	
Gibsonville	26	Elon	25	
Gibsonville	47	McLeansville	31	
Gibsonville	42	Besemer	54	
Gibsonville	67	Monticello	25	
Gibsonville	35	Rankin	52	
Gibsonville	38	Pleasant Garden	35	
Gibsonville	35	Aycock	65	
Gibsonville	45	Nathaniel Greene	31	
Gibsonville	34	Alamance	37	
Gibsonville	26	Guilford	27	
Gibsonville	43	Elon	27	

Tournament Games	
Gibsonville	26
Pleasant Garden	27

GIRLS BASKETBALL



Foreground: Nell Levens, Margaret Kellis. First row, left to right: Coach E. B. Owens, Hazel Gillispie, Johnnie Wilson, Lucille Miles, Norma Reid, Jeanette Ingle, Clara Boone, Thelma Younger (Manager). Second row: Sylvia Wyrick, Joan House, Judy Christman, Emma Lou Sockwell, Sue Reid, Shirley Grayson, Annie Brothers, Ruby Hudgins (Manager). Third row: Eloise Bull, Betty Younger, Marlene Gerringer, Mickey Fesperman, Arbutus Johnson, Monte Hinton, Eugenia Trogdon, Shirley Ingle (not shown).

Words fall when we try to pay suitable tribute to these basketball heroines of Gibsonville High whose exploits on the court are now only a memory in our hearts. The lassies could have been called Blitz Kids, Kids of Destiny, Cinderella Kids, Squeeze Kids, "Quick Six with the Slick Tricks," and anything else you would care to add to that list. They were the best mannered and smartest lassies at adapting themselves to all defenses and offenses that has completed a season at our school in quite some time. The season of '48-'49, under the unexcelled coaching of Mrs. Owens, has been a thrill for these girls—but it has been a bigger one for we who have watched them grow.

Clever floorwork, ball-handling, and noticeable form spotlighted the first game of the season when the "Yellow-Jacket" girls, donned in Black and Gold, trounced the McLeansville lassies to the tune of 26-11. The girls were not satisfied with this victory and began to sting opponent after opponent. Near the end of the regular season they defeated Rankin on the latter's home court by the overwhelming score of 50-36, proving that although they had dropped from a first place tie to fourth place, they still had a big chance in the tournament.

Their big chance in the Guilford County high school basketball tournament almost materialized. In the preliminaries they put on a last minute surge of power to gain a 24-18 victory over Stokesdale. Then came the quarter-finals and a bad break. The Guilford girls squeezed out a 33-30 victory over the stubborn Gibsonville six. Although such an abrupt end came to their successful season, the G. H. S. girls proved that Gibsonville is still a powerful contender in athletic competition.

Gibsonville		SCORES		Opponents	
Gibsonville	23	McLeansville	12		
Gibsonville	26	McLeansville	11		
Gibsonville	27	Bessemer	11		
Gibsonville	19	Monticello	15		
Gibsonville	33	Aycock	30		
Gibsonville	27	Guilford	67		
Gibsonville	31	Rankin	25		
Gibsonville	31	Pleasant Garden	20		
Gibsonville	28	Nathaniel Greene	21		
Gibsonville	20	Alamance	22		
Gibsonville	26	Elon	25		
Gibsonville	25	McLeansville	20		
Gibsonville	19	Bessemer	21		
Gibsonville	19	Monticello	23		
Gibsonville	50	Rankin	36		
Gibsonville	33	Pleasant Garden	22		
Gibsonville	44	Aycock	31		
Gibsonville	11	Nathaniel Greene	28		
Gibsonville	30	Alamance	29		
Gibsonville	25	Elon	26		

Tournament Games

Gibsonville	28	Bessemer	19
Gibsonville	24	Stokesdale	18
Gibsonville	30	Guilford	33

BASEBALL



Front row, left to right: Donald Overman, outfield; Bobby Farrington, pitcher; Arnold Beckom, left field; Donald Allred, shortstop; Horace Isley, first base; Jack Flynn, pitcher; "Mimmie" Simpson, outfield; Dickie Huffman, pitcher and first baseman. Second row: Eugene Wheeler, manager; Jerry Shepherd, outfield; Carl May, third base; Billy Childers, center field; Braxton Belvin, catcher; Herbert Belvin, right field; Bobby Rudisill, pitcher; Bobby Gerringer, second base; Coach J. S. Casey.

"Take me out to the ball game!" That was the war-cry of the hard-hitting "Yellow Jackets" as they opened their 1949 baseball season. But (to tell the truth, the whole truth, and nothing but the truth) it was the opponents who were taken out! In their first encounter of the season Gibsonville defeated Bessemer 1-0—the first time in nineteen long years that a G. H. S. team had accomplished such a feat. The highly favored Summerfield nine experienced the same disaster a few days later to the tune of 3-2. Elon went down to the score of 8-6. Although we could write a book about their diamond experiences, let's take a look at the material of which the squad was composed.

Coach J. S. Casey boasted an excellent pitching staff—the best in many years. It consisted of three smooth-flowing delivery boys in the beginning with a lanky six-footer joining in as the season moved forward. Each, Flynn, Rudisill, Farrington, and Huffman, held all opponents at bay. Far be it for us to overlook lanky Braxton Belvin. His pep and enthusiasm behind the plate were felt by all spectators. Horace Isley, an all-around baseball natural, became one of the cleverest of Guilford County first basemen. Bobby Gerringer, second baseman, was a vital factor in Gibsonville's many triumphs with his hitting and smart infield play. At shortstop, Donald Allred kept all hot grounders well at bay. Carl May, the life of the Gibsonville nine, kept first base hot with his long across-the-diamond throws. Arnold Beckom, Bill Childers, and Herbert Belvin, alternating with Jerry Shepherd and Donald Overman, were steady, dependable, and ever-alert outfielders.

The second team worked as earnestly as the first-stringers, and we regret that space does not allow us more words with which to represent them. They did a wonderful job "yelling" us on to victory from the bench, which we hope many of them will evacuate in '50 to take their places in the upper ranks.

All the members of our school and community take off their hats with pride to a great high school nine—the '49 G. H. S. "Yellow Jackets!"

SCORES

Gibsonville		Opponents	
Gibsonville	3	Summerfield	2
Gibsonville	1	Bessemer	0
Gibsonville	8	Elon	6
Gibsonville	2	Rankin	1
Gibsonville	6	Bessemer	10
Gibsonville	9	Monticello	3
Gibsonville	6	Summerfield	7
Gibsonville	8	Elon	6
Gibsonville	3	Elon	6
Gibsonville	18	McLeansville	1
Gibsonville	6	Alamance	2
Gibsonville	10	Monticello	0
Gibsonville	9	Alamance	0
Gibsonville	7	McLeansville	0
Gibsonville	0	Rankin	1

Tournament Games

Gibsonville	13	Stokesdale	6
Gibsonville	5	Jamestown	1
Gibsonville	1	Rankin	5

Things We'll Remember



The Guilford
Game (18-12)



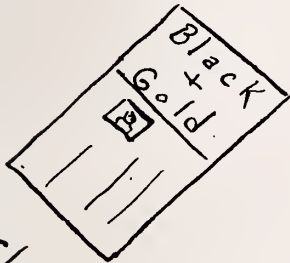
State Fair

'48



Yell-O-Jak
No. I

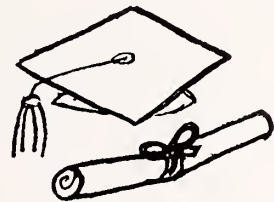
Exams



The Revised
Black & Gold

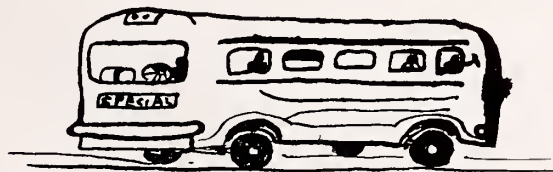


Juniors-Seniors
Banquet



(We Hope)

Semi-Finals
'48



Our Trip To Washington

SUPERLATIVES



BILLY CHILDERS
Best All Around, Best Sport



THELMA SEARS
Most Attractive



BARBARA WILSON
Most Coöperative
HARLIN MATKINS
Most Coöperative
Best Personality
NELDA ALLEN
Best Personality



JOAN CATES
Most Studious
BOBBY RUDISILL
Most Studious

SUPERLATIVES



CARL MAY
Best Dressed Boy
NANCY HOFFMAN
Best Dressed Girl



CAROL LOVE
Most Dependable
VANCE FOUST
Most Dependable



MARY INGLE
Cutest Girl
ROBERT HINTON
Cutest Boy
Best Athlete



JACK SMITH
Most Popular
BARBARA WILSON
Most Popular

WASHINGTON TRIP



SENIORS OF 1949



Foreground: Kay Evans, mascot. *First row, left to right:* Nancy Hoffman, Lucy Fogleman, Doris Simpson, Nelda Allen, Shirley Ingle, Virginia Whitesell, Joan Cates. *Second row:* Hazel Miles, Mary Ingle, Helen Smith, Ruby Cook, Sue Haley, Barbara Wilson, Carol Love, Lucy Mae Byrd, Virginia Baldwin. *Third row:* Vance Foust, Thelma Sears, Jack Smith, Tommy Lee Andrews, Bobby Rudisill, Carl May, Dickie Huffman, Bob Pruet, Billy Childers, Frances Miles, Harlin Matkins.

JUNIOR MARSHALS



First row, left to right: Shirley Grayson, Margaret Kellis, Dolly Westmoreland (*Chief*), Nellie Levens. *Second row:* Lloyd Cheek, Billy Murrell, Harold Younger.

Compliments

of

**MINNEOLA
MANUFACTURING
COMPANY**

Compliments

of

HARPER'S JEWELRY

Quality Jewelry and Expert Watch Repair

WE LEAD

OTHERS FOLLOW



GREENSBORO

Coca-Cola

TRADE-MARK

BOTTLING COMPANY

GREENSBORO, N. C.

*Compliments
of*

HOODS SPORTING GOODS

206 West Front Street
BURLINGTON, N. C.

Phone 6-4797

*Compliments
of*

SERVICE CLEANERS

•

Phone 138B

Main Street

*Compliments
of*

BANK OF GIBSONVILLE

*Compliments
of*

FIELD'S CLOTHING SPORTS WEAR

•

"Made to Measure Clothes"

Compliments

of

CITY CAFE

•

"We Strive to Please Our Customers"

•

PROPRIETORS: BARBER BROTHERS

INSURANCE

FIRE — ACCIDENT — LIABILITY — AUTOMOBILE

"Careful Attention Given All Business Entrusted to Us"

GIBSONVILLE DEVELOPMENT CO.

PHONE 28

"It Pays To Be Fully Protected"

ROCK CREEK DAIRY

Grade "A" Pasteurized and Homogenized

MILK

HIGH QUALITY - PALATABLE - NUTRITIOUS

PHONE 28 OR 73A

<i>Compliments of</i> OLD HICKORY GRILL	MAY'S STORE GROCERIES AND MEATS <i>"For Particular People"</i>
<i>Compliments of</i> Wicker's Self-Service Gro.	<i>Compliments of</i> YOUNG'S SELF-SERVICE GROCERY
<i>Compliments of</i> G. MARVIN HOLT <i>Frigidaire Dealer</i>	TAYLOR and WHEELER GROCERIES - FEED - SEED FERTILIZER Phone 54
ALLRED'S JEWELRY 221½ W. Front Street BURLINGTON, N. C.	<i>Compliments of</i> MURRELL BROTHERS HARDWARE
PEELE ELECTRICAL CO. BURLINGTON, N. C.	SOMERS' SHOE SHOP FOR PERFECT SHOE REPAIRS <i>Dyeing and Refinishing</i>
BETTY LOU SHOP BURLINGTON, N. C.	CITY TAXI SERVICE Phone 147
<i>Compliments of</i> HUFFINES SHOE STORE	<i>Compliments of</i> GENE'S SURPLUS STORE
<i>Compliments of</i> GAY THEATER	<i>Compliments of</i> Mabe's Sandwich Shop

Compliments of

GIBSONVILLE FEED MILL

FEED - MEAL - BRAN - FLOUR - GRAIN, and GRINDING

MAIN STREET

JACK BURGESS, *Manager*

*Compliments
of*

**PATERSON'S
FOOD STORE**

*Compliments
of*

**MOOREFIELD'S
FLORIST**

BURLINGTON, N. C.

*Compliments
of*

WADE'S JEWELERS

Our Motto: "*A Square Deal*"

Compliments of

Dixie Bell Textile, Inc.
Manufacturers of

CHILDREN'S, MISSES', AND
LADIES' UNDERWEAR

Waynick Insurance Agency

PAUL D. WAYNICK, *Owner*
Telephone 27-B

Compliments of

BOONE'S SODA SHOP

Compliments of

Butler's Service Station

Compliments of

HOME FINANCE CO.

Compliments of

GIBSONVILLE DRUG COMPANY

PHONE 16

PAYLOR'S TAXI SERVICE

PHONE 83

Compliments

of

WESTBROOK'S

STUDIO

Compliments of
Hi-Way Service Station

TROLLINGER'S FLORIST

Main Street — Burlington, N. C.
Phone: Day 6-1668 - Night 519

Compliments of
WICKER'S VARIETY STORE

DEL MAR BEAUTY SHOP

Main Street — Burlington, N. C.
Phone 6-2722

Compliments of
THE SENIOR CLASS

HUFFINES ESSO SERVICE
BUCK PETTIGREW, *Manager*

Compliments of
Engineered Plastics, Inc.

Compliments of
**NEESE SHOFFNER
FURNITURE COMPANY**

Compliments of
**THOMAS AND HOWARD
COMPANY**

BURTNER FURNITURE COMPANY

312 South Elm Street

GREENSBORO, N. C.

900 East Green Street

HIGH POINT, N. C.

Established 1909

INGLE SERVICE STATION

SINCLAIR GAS AND OIL

Washing and Greasing

Compliments of

RUBY'S BEAUTY SHOP

Phone 35-C

W. I. ANDERSON & CO.

GREENSBORO, N. C.

WHOLESALE FRUITS

and VEGETABLES

Frozen Foods Dixie Margarine



MASTER SERVICE STATION

FISKE AND DAYTON TIRES WILLARD BATTERIES

Corner Green Street and Edwards Place
Greensboro, N. C.

TELEPHONE 2-4167

CAROLINA MUSIC SERVICE

A Wurlitzer Factory Approved Merchant

Wurlitzer Music Installed Free on a Profit Sharing Basis

NEW AND USED RECORDS

DIAL 6-2545

North Church Street

Burlington, N. C.

GENERAL TIRE SUPPLY

Distributors

GENERAL TIRES AND BATTERIES

KRAFT SYSTEM OF TIRE RENEWING

218 North Main Street BURLINGTON, N. C. Telephone 6-6951

Compliments of

Burlington Sporting Goods Co.

Phone 6-6634

423 Worth Street

JACK BOONE and CURRY BRYAN

Compliments of

MELVILLE DAIRY

QUALITY DAIRY PRODUCTS

BURLINGTON, NORTH CAROLINA

THE JEWEL BOX

Greensboro's Diamond, Watch,
and Gift Store for Over 25 Years

134 South Elm Street

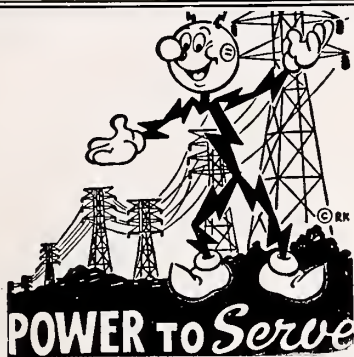
GREENSBORO, N. C.

SOUTHSIDE HARDWARE CO.

523-525 S. Elm Street

GREENSBORO, N. C.

Hardware Service Since 1902



I'll furnish the electric power. You furnish the greatest power of all—Human character and brains. Together we'll make the Piedmont Carolinas the best place on earth in which to live and work.

DUKE
POWER COMPANY
Serving the Piedmont Carolinas

Courtesy of
RICH & THOMPSON
FUNERAL SERVICE

AMBULANCE

Dial 6-1622 Collect
 BURLINGTON, N. C.

Compliments
of

COBLE
SPORTING GOODS

GREENSBORO, N. C.

REACH FOR SUNBEAM BREAD

Compliments
of

BAMBY BAKERS, INC.

BURLINGTON, N. C.

Compliments
of

SHOWFETY'S

GREENSBORO, N. C.

OVER NITE SERVICE
STATION

ESSO Products - Washing and
Greasing - Open Day and Night

632 S. Elm St. : Phone 2-1523

GREENSBORO, N. C.

BAXTER FURNITURE
COMPANY, Inc.

The Friendly Store Phone 3-2563

324-326 S. Elm Street

GREENSBORO, N. C.

CLEGG'S BUTTER KRUST

IS GOOD BREAD

SERVED IN GIBSONVILLE HIGH SCHOOL
CAFETERIA DAILY

*Compliments
of*
SUPERIOR STONE CO.

CITY AUTO SUPPLY

PHONE 98-B
GIBSONVILLE, N. C.

KELLY SPRINGFIELD TIRES
Clyde's Texaco Service
GIBSONVILLE, N. C.

BOSTON CLEANERS

BURLINGTON, N. C.

Compliments of
Queen Ann Service Station

McNeil's Furniture Shop
"For Those Who Want the Best"
ELON COLLEGE, N. C.

THE SENIOR CLASS

*Expresses Its Deepest Appreciation to the Advertisers and Friends
Who Have Made This Issue Possible.*



YES, teachers are vitally important to you, and to every good citizen—yet today, as you well know, there are far from enough fully *qualified* teachers in our schools. What can *you* do to help solve the serious school-teacher shortage?

YOU CAN DO THIS!

First: Check up on educational conditions in your local schools. **Second:** Work with civic groups and school boards seeking to improve teachers' working and living conditions. The joint effort of forward-looking citizens can and must save this situation—for the sake of our children and our country.

Printed as a public service by

EDWARDS & BROUGHTON COMPANY

Printers : Stationers : Lithographers : Engravers

Raleigh, North Carolina

AUTOGRAPHS



