



THE  
YELLOWJACKET  
1944







Office







*The*  
YELLOW JACKET  
*1944*



*Published by the Senior Class of*

LANDIS HIGH SCHOOL

LANDIS, NORTH CAROLINA

VOLUME NINE

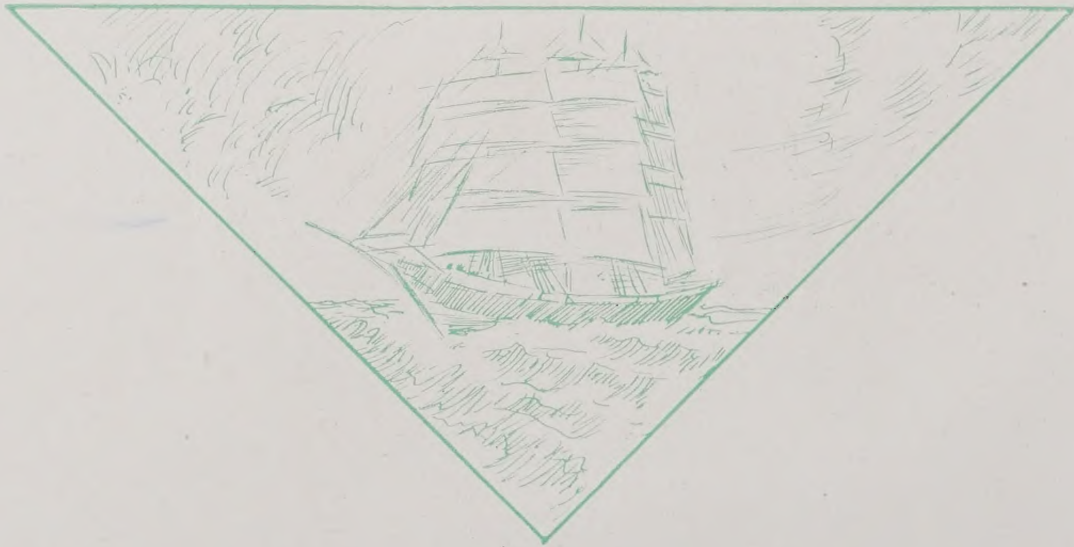


# Foreword

*I must go down to the seas again, to  
the lonely sea and the sky,  
And all I ask is a tall ship and a star  
to steer her by.*

*And all I ask is a merry yarn from a  
laughing fellow-rover,  
And quiet sleep and a sweet dream when  
the long trick's over.*

*The schooners and the merry crews are  
laid away to rest,  
A little south the sunset in the Islands of  
the Blest.*



ROWAN PUBLIC LIBRARY  
SALISBURY, NC



3907815525





## *Dedication*

TO

MR. S. G. HASTY

WE, THE SENIORS OF 1944, in searching our minds during these trying days for someone to dedicate this, our year book, need only to turn to our beloved county superintendent.

Mr. Hasty has given his services from early manhood to educational advancement of the youth of North Carolina.

When the achievements for those who have contributed to the task for consolidation of schools are written in this state, his record will head the list for this great work.

With our sincere appreciation for his unfailing loyalty and interest in our school, we sincerely dedicate this volume of the *YELLOW JACKET* to Mr. S. G. Hasty, Superintendent of Rowan County Schools. We trust that this interest will continue and that he may contribute many more years of useful services to the schools of our county.





T. F. BOSTIAN  
*Superintending Principal Landis District*  
Erskine College, State College  
B.S. Degree

## *Message to the Senior Class*

THE ARCHITECT HAD HIS PLANS before him. He had dreamed of her great strength and beauty. The day had arrived for the workmen to lay down her keel. He watched closely every piece of materials that went into her as she took shape and at last she was launched. Indeed this was a great day for the young architect and the workmen. Their work was almost completed and they were justly proud, for there she was, Proud Mistress of the Sea.

Not so many years ago two architects (father and mother), stood and looked down at you in your crib. They had a vision of you growing into manhood and womanhood.

Many builders have aided you along the way and I trust the faculty of Landis High School and myself can be added to this list and that we have helped build within you something that will last during your voyage on this earth.





# THE FACULTY



*First Row:*

H. A. MCCREARY  
Lenoir Rhyne College  
A.B. Degree  
*Assistant Principal  
Health, Physical Education,  
Basketball Coach*

MARTHA DORON  
Murray Teachers College  
B.S. Degree  
*Commerce*

MARY GLADYS FISHER  
Lenoir Rhyne College  
A.B. Degree (P.S.M.)  
*French, English*

GENEVA LEE GOODMAN  
Appalachian State Teachers' College  
B.S. Degree  
*Physical Education, Mathematics,  
Basketball Coach*

EMOJEAN SHULENBERGER  
Catawba College  
A.B. Degree  
*English, History*

*Second Row:*

MILDRED GLENN  
Woman's College, U. N. C.  
A.B. Degree  
*English, Librarian*

MRS. RUTH LEAFE  
Cornell University  
B.S. Degree  
*Science, Geography, Chemistry*

DORIS MENDENHALL  
Catawba College  
A.B. Degree  
*English, Social Studies*

ALLIE M. MILLS  
Appalachian State Teachers'  
College  
B.S. Degree  
*Home Economics*

*Fourth Row:*

MARGUERITE SMITH  
Lenoir Rhyne College  
A.B. Degree  
*Music*

*Third Row:*

RENA MORGAN  
Woman's College, U. N. C.  
A.B. Degree  
*Mathematics, English*

JOSEPH PARKER  
Guilford College  
A.B. Degree  
*Music, History*

KATHERINE PARSONS  
Queens College  
B.M. (P.S.M.)  
*Science, Health*

R. C. PITTMAN  
Tennessee State  
V. P. I. Va.  
Auburn University  
B.S. Degree  
*Agriculture*

INEZ STURKEY  
Catawba College  
B.S. Degree  
*History, Civics*

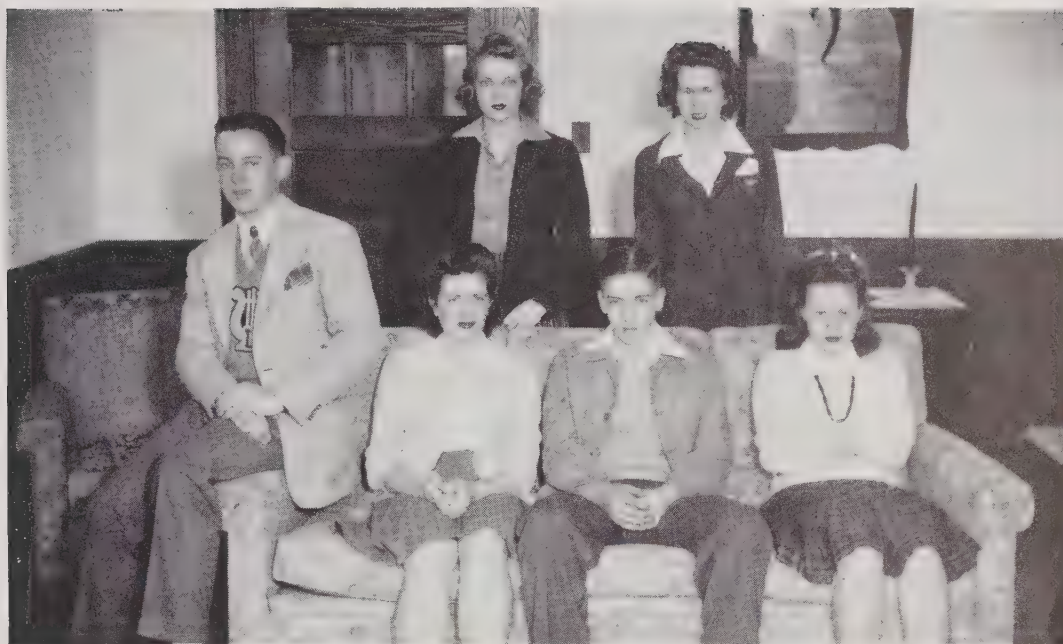




# Classes







## SENIOR CLASS OFFICERS

*Advisers* . . . . . MISS MARY GLADYS FISHER AND MISS DORIS MENDENHALL  
*President* . . . . . LAMAR DORTON  
*Vice-President* . . . . . AUDREY MEDLIN  
*Treasurer* . . . . . CORA BELLE RYMER  
*Secretary* . . . . . RAY EDDLEMAN, JR.

CLASS MOTTO: *"With the Rope of the Past We Will Ring the Bells of the Future."*

CLASS FLOWER: *White Rose.*

CLASS COLORS: *Green and White.*

## MASCOTS

BENNY COOK  
 Son of  
 Mr. and Mrs. B. F. Cooke

NANCY BARNHARDT  
 Daughter of  
 Mr. and Mrs. B. E. Barnhardt

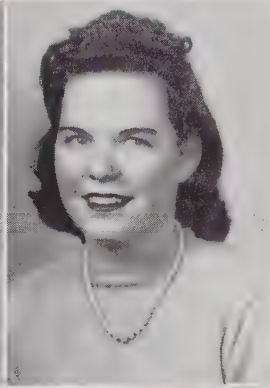
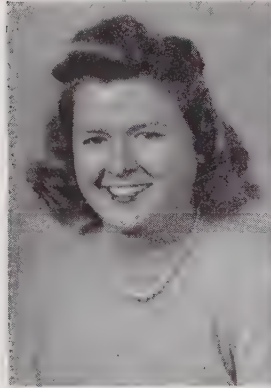




*Senior Class*

HATTIE ALLEY

November 20



EVELYN BRACKETT

December 25

BILLY BEAVER

June 8

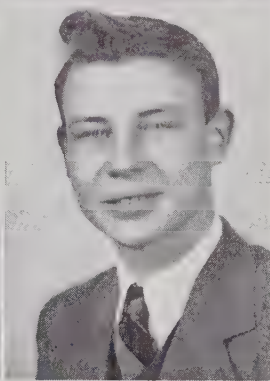
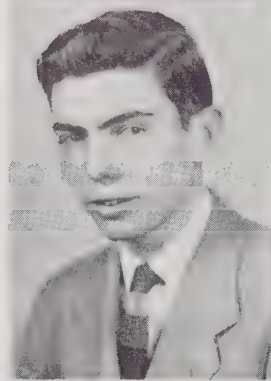


LOIS CAMPBELL

August 20

WILLIAM PARKS BEAVER

August 15

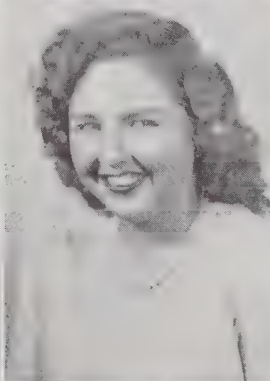


GENE CORRIHER

August 22

ALTHENA BOSTIAN

April 3

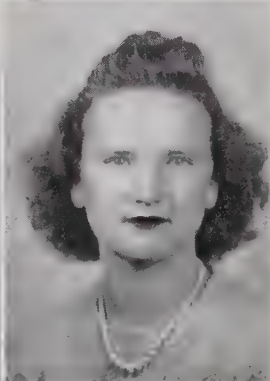
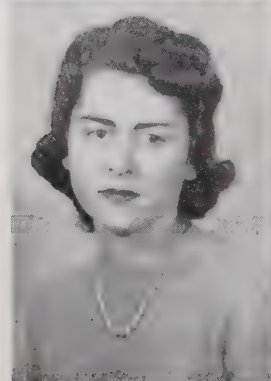


LUCILLE DAVIS

August 9

JUANITA BOSTIAN

March 16



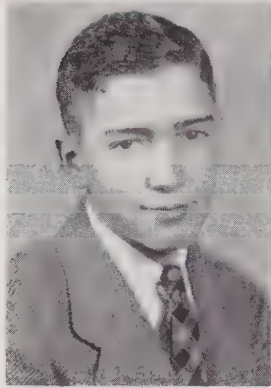
MARTHA DEAL

September 24



Senior Class

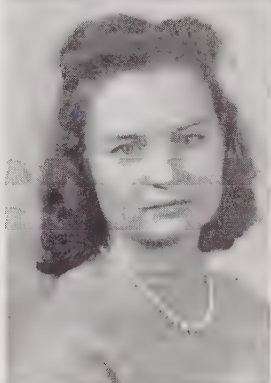
LAMAR DORTON  
November 17



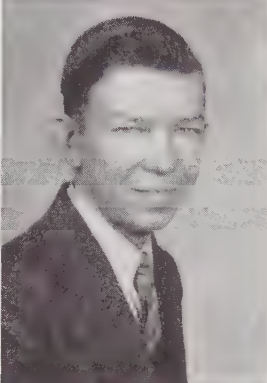
OPHELIA GALLOWAY  
April 28



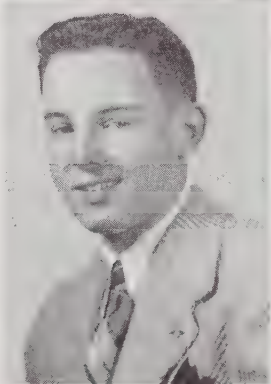
LAVENIA EDDLEMAN  
February 7



HOYLE GARVER  
February 19



RAY EDDLEMAN, JR.  
October 12



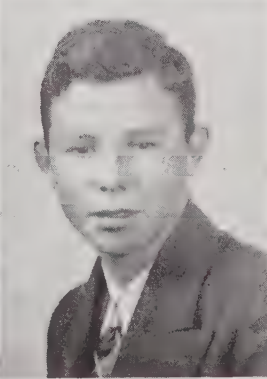
LUCILLE HARRIS  
March 12



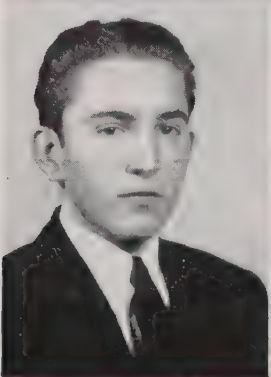
ALLIE MAE ERVIN  
December 26



ASBURY HARKEY  
November 26



GLENN FUNDERBURKE  
June 1



PEARL HOLSHOUSER  
July 27



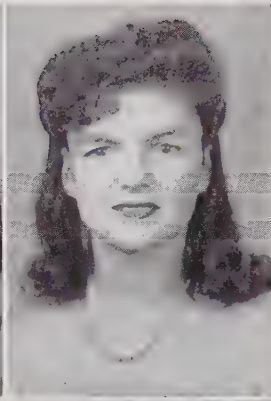


Senior Class

FRANCES IVEY  
March 6



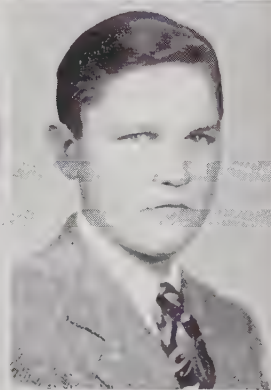
MARIE LIPE  
August 16



VETA KARRIKER  
March 31



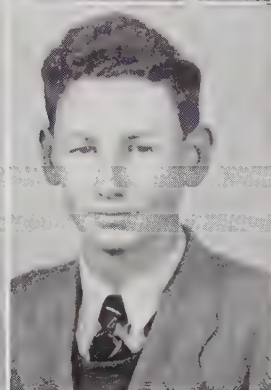
RICHARD LONDON  
July 28



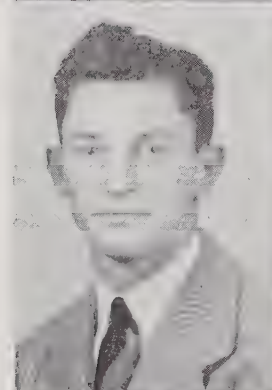
HELEN LEAZER  
July 26



CHARLIE RAY MARSHALL  
July 30



LEONARD LINN  
October 1



AUDREY MEDLIN  
July 28



LILLIAN LINKER  
August 11



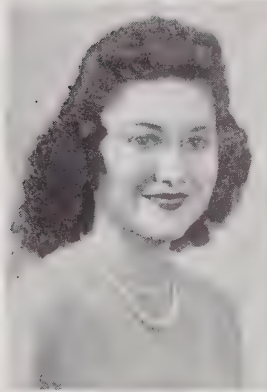
BESSIE OVERCASH  
May 31





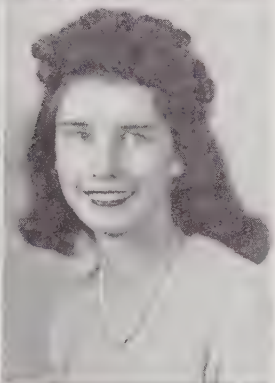
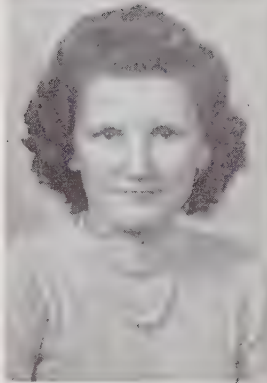
Senior Class

PHYLLIS OWENS  
July 27



FAYE PROPST  
May 30

MARJORIE PATTERSON  
May 4



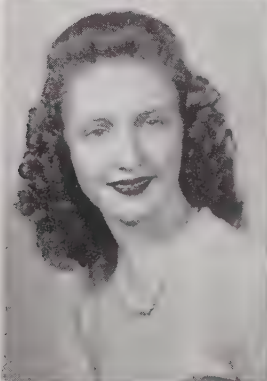
LOUISE ROSEMAN  
February 18

EVELYN PETREA  
November 6



CORA BELLE RYMER  
January 10

BONNIE POARCH  
December 29



EVELYN SANDERS  
March 22

FRANCES POTEAT  
July 23

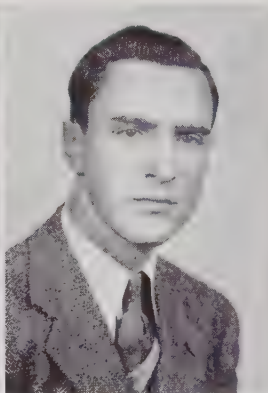


RACHEL SANDERS  
April 6



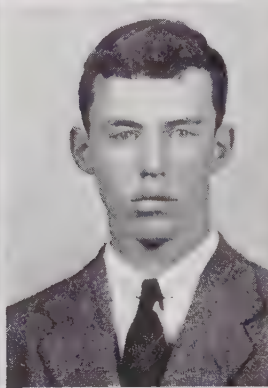
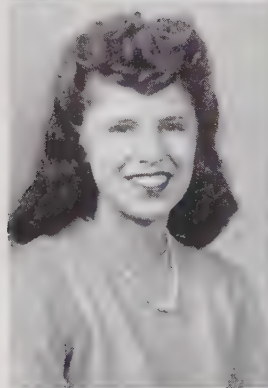
*Senior Class*

MARY SUE SECHLER  
September 19



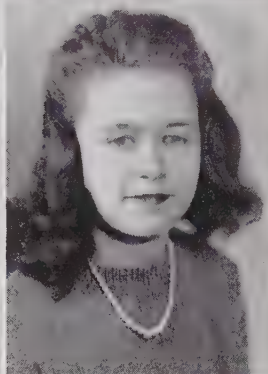
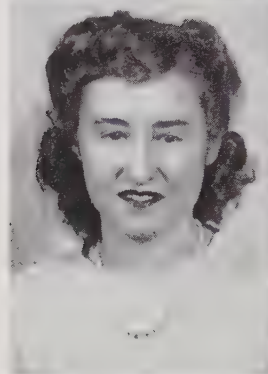
L. L. SMITH  
September 8

MARGARET SHINN  
July 2



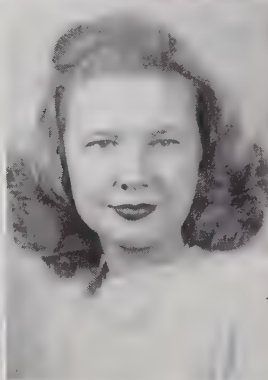
RAYMOND SUTTON  
September 15

LOUISE SLOOP  
July 27



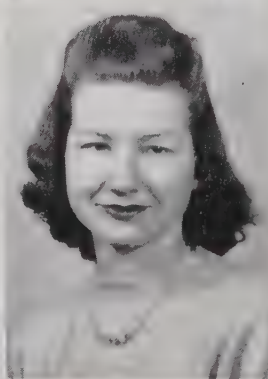
WILLIE STRICKLAND  
September 12

HAROLD SECHLER  
September 12



MILDRED SWINK  
June 14

JACKIE SMITH  
July 2



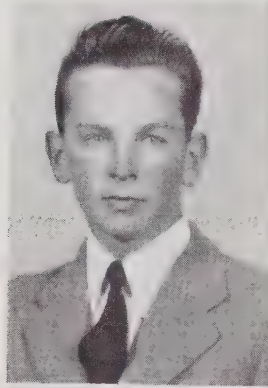
MARGARET TROUTMAN  
March 14



# Senior Class

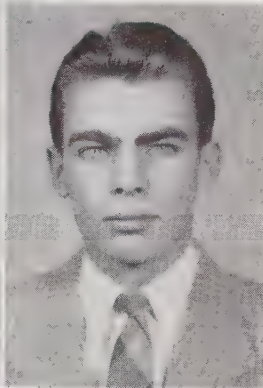
MYRON TROUTMAN

May 26



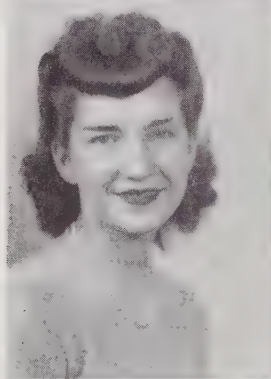
JOHNNY WILLIAMS

July 26



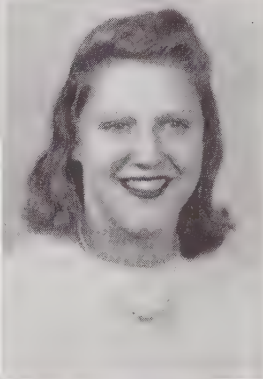
SARAH WEAST

August 28



IDA B. WILHELM

July 1



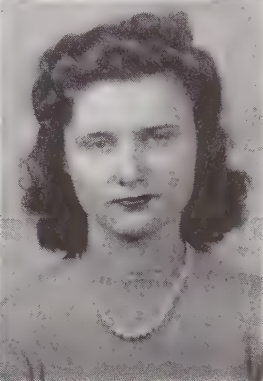
NEAVONNE WENSIL

October 23



JUANITA WRIGHT

August 31



## CLASS POEM

*Dear friends of the Senior Class,  
In each of us does pride ascend  
As we receive now at last,  
The token of our high school end.*

*Now before we part—  
For some must part, that's sure—  
We show a last thought of heart  
For those we have been with here.*

*When steeper climbs or rougher roads  
The paths we go ascend,  
We may then look back burdened with loads  
And wish it were as then.*

*The hours we spent of worry  
Or the hardest problems faced  
The hours will all seem merry  
And the problems all unbiased.*

*Then life, may we enjoy more  
By looking back on high school days;  
In this joy, may our spirits soar  
And give courage to us on our ways.*

JACKIE SMITH,  
Class Poet.



WAY BACK WHEN...



DO YOU REMEMBER??





# SENIOR DIRECTORY

## HATTIE ALLEY

Literary Club, 1; Hiking Club, 2; First Aid Club, 3; President Dramatics Club, 4; Glee Club, 3, 4; Annual Staff, 4; Superlative, Most Popular, Wittiest; First Girl Bus Driver in Rowan County.

## BILLY BEAVER

Hiking Club, 1, 2; Literary Club, 4; Sports Club, 3.

## WILLIAM PARKS BEAVER

Agricultural Club, 1, 2; Glee Club, 1, 4; Basketball, 4; Football, 2, 3, 4; Manager, 2; Monogram Club, 2, 3, 4; Dancing Club, 3, 4; Science Club, 1; Junior Play; Senior Play; Advertising Manager Annual Staff, 4; Dramatics Club, 3; Hiking Club, 2; Superlative, Best Sport.

## ALTHENA BOSTIAN

Dancing Club, 1; Hiking Club, 2; Home Economics Club, 3; Dramatics Club, 4; Glee Club, 4.

## JUANITA BOSTIAN

Dramatics Club, 3; Dancing Club, 3; Glee Club, 1, 2, 4; Hiking Club, 2; Scrapbook Club, 1.

## EVELYN BRACKETT

Cannon High One-half Year; Hiking Club, 1, 2; Senior Play; Dancing Club, 2.

## LOIS CAMPBELL

Scrapbook Club, 1; Hiking Club, 2; Dancing Club, 3, 4; Marshal, 3; Glee Club, 1, 2, 3, 4, Treasurer, 4; Band, 1, 2, 3, 4, Secretary, 3; Beta Club, 3, 4, Secretary, 4; Monogram Club, 4; *Spectator* Staff, 3; Annual Staff, 2, 3; Superlative, Most Likely to Succeed.

## GENE CORRIHER

Science Club, 1; Hiking Club, 2; Dancing Club, 3, 4; Glee Club, 1, 2, 4; Senior Play.

## LUCILLE DAVIS

Taylorsville High School; Hiking Club, 2; Dancing Club, 3; Home Economics Club, 3; Assistant Manager Store, 4.

## MARTHA DEAL

Glee Club, 1; Dancing Club, 1; Home Economics Club, 3; Hiking Club, 2; Dramatics Club, 4.

## LAMAR DORTON

Albemarle High School, 1; Marion High School, 2; Science Club, 2; Sports Club, 3; Dramatics Club, 4; Monogram Club, 3, 4, President, 4; Glee Club, 4; Junior Play; Senior Play; Football, 3, 4; Basketball, 3, 4; Baseball, 3, 4, Captain, 4; Annual Staff, 4; Class President, 4; Superlative, Best All-Round, Most Athletic; Mid-Piedmont All-Tournament Team, 4.

## LAVENIA EDDLEMAN

Home Economics Club, 1; Glee Club, 1, 2, 4; Dramatics Club, 4; First Aid Club, 3; Singing Club, 2.

## RAY EDDLEMAN, JR.

Glee Club, 1, 2, 4; Science Club, 1; Wild Life Club, 2; President Airplane Club, 3; Stamp Club, 1; Monogram Club, 4; Beta Club, 3; Class Secretary, 4; Ballroom Dancing Club, 4; Superlative, Most Likely to Succeed, Most Dignified; Band, 2, 3, 4; Annual Staff, 4.





# SENIOR DIRECTORY

## ALLIE MAE ERVIN

Home Economics Club, 1; Hiking Club, 2; Glee Club, 4; First Aid Club, 3.

## GLENN FUNDERBURKE

Future Farmers of America, 1, 2, 3, 4; Hiking Club, 2; Dancing Club, 3, 4; Glee Club, 1, 2, 4.

## OPHELIA GALLOWAY

Rockwell High School, 1, 2; First Aid Club, 2; Dramatics Club, 4; Beta Club, 4; Superlative, Most Studious.

## HOYLE GARVER

Future Farmers of America, 1, 2, 3, 4; Hiking Club, 2; Literary Club, 4; Art Club, 3; Glee Club, 4.

## LUCILLE HARRIS

Home Economics Club, 1; Hiking Club, 2; Dramatics Club, 4; First Aid Club, 3; Glee Club, 2, 3.

## ASBURY HARKEY

Odelle High School, 1; Science Club, 2; Hiking Club, 3; Football, 4; Monogram Club, 4; Home Economics Club, 4.

## PEARL HOLSHOUSER

Hiking Club, 2; Dramatics Club, 4; Glee Club, 2, 4; Home Economics Club, 1, 3.

## FRANCES IVEY

Secretary Class, 1; Assistant Features Editor Annual Staff, 1, 4; Home Economics Club, 1; Hiking, 2; Basketball, 1, 2, 3; Dramatics Club, 3, 4; Dancing Club, 3; Monogram Club, 4; Senior Play, 4; Junior Play, 3; Senior Superlative, Biggest Flirt.

## VETA KARRIKER

Home Economics Club, 1, 3; Hiking Club, 2; Dramatics Club, 4.

## HELEN LEAZER

Dancing Club, 1; Dramatics Club, 4; Junior Glee Club, 2; Senior Glee Club, 4; Home Economics Club, 3; Hiking Club, 2.

## LEONARD LINN

Sports Club, 1, 3; Hiking Club, 2; Basketball, 3, 4; Senior Play, 4; Football, 4; Home Economics Club, 4.

## LILLIAN LINKER

Home Economics Club, 1; Hiking Club, 2; Dancing Club, 3, 4; Glee Club, 4.

## MARIE LIPE

Scrapbook Club, 1; Glee Club, 1, 2, 4; Dancing Club, 3, 4; Singing Club, 2.

## RICHARD LONDON

Agriculture Club, 1, 2, 3, 4; Hiking Club, 1, 2; Dancing Club, 3, 4.

## CHARLIE RAY MARSHALL

China Grove School, 1, 2; Senior Play, 4; Baseball, 3, 4; Basketball, 3, 4; Hiking Club, 3; Home Economics Club, 4.

## AUDREY MEDLIN

Glee Club, 1, 2, 3, 4; Hiking Club, 2; Dancing Club, 1, 3; Dramatics Club, 4; Basketball, 1, 2, 3, 4; Softball, 1, 2, 3, Captain, 4; Vice-President Class, 4; Assistant Editor Annual Staff, 4; *Spectator* Staff, 3, 4; Senior Play, 4; Junior Play, 3; Monogram Club, 3, 4; Cheerleader, 1, 2, 3; Superlative, Best All-Round, Most Athletic.





# SENIOR DIRECTORY

## BESSIE OVERCASH

Scrapbook Club, 1; Singing Club, 2; Glee Club, 2, 3, 4; Marshal, 3; Dancing Club, 3, 4; Beta Club, 3, 4; *Spectator* Staff, 4.

## PHYLLIS OWENS

Singing Club, 2; Dancing Club, 1, 2; Beta Club, 4; Home Economics Club, 1, 3, Secretary-Treasurer, 3; Glee Club, 2, 3, 4.

## MARJORIE PATTERSON

Home Economics Club, 1, 3; Hiking Club, 2; Dramatics Club, 4.

## EVELYN PETREA

Dancing Club, 1, 3, 4; Hiking Club, 2; Junior Marshal, 3; Senior Play, 4; Beta Club, 4; Superlative, Most Dignified.

## BONNIE POARCH

Troutman High School, 1; Statesville High School, 2; Dancing Club, 3, 4; Basketball, 3, 4; Glee Club, 4; Annual Staff, 4; Senior Class Prophet, 4; Junior Play, 3; Senior Play, 4; Monogram Club, 4.

## FRANCES POTEAT

Home Economics Club, 1; Hiking Club, 2; Dancing Club, 3, 4; Glee Club, 4.

## FAYE PROPST

Scrapbook Club, 1; Art Club, 1; Dramatics Club, 1; Hiking Club, 1.

## LOUISE ROSEMAN

Scrapbook Club, 1; Hiking Club, 2; Glee Club, 2, 3, 4; Dancing Club, 3, 4; Secretary Class, 3; Superlative, Friendliest, 4.

## CORA BELLE RYMER

Vice-President Class, 2, 3, Treasurer, 4; Dancing Club, 1, 4, President, 4; Hiking Club, 2; Art Club, 3; Class Historian, 4; Beta Club, 4; Annual Staff, 4.

## EVELYN SANDERS

Dancing Club, 1, 4; Hiking Club, 2; Art Club, 2; Dramatics Club, 3; Junior Play, 3; Glee Club, 4; Senior Play, 4; Annual Staff, 4; Superlative, Class Baby, Best Sport.

## RACHEL SANDERS

Home Economics Club, 1; Hiking Club, 2; Dancing Club, 3; Dramatics Club, 4; Art and Dramatics Club, 3; Annual Staff, 4.

## MARY SUE SECHLER

Home Economics Club, 1; Hiking Club, 2; Dramatics Club, 4.

## MARGARET SHINN

Home Economics Club, 1; Glee Club, 2, 4; Secretary Hiking Club, 2; Art Club, 3; Dancing Club, 4; Superlative, Most Attractive.

## LOUISE SLOOP

Scrapbook Club, 1; Singing Club, 2; Dancing Club, 3, 4; Marshal, 3; Glee Club, 1, 2, 3, 4; Vice-President Beta Club, 3, 4.

## HAROLD SECHLER

Future Farmers of America, 1, 2, 3, 4; Hiking Club, 2; Dancing Club, 3, 4; Glee Club, 1, 2, 4.





# SENIOR DIRECTORY

## JACKIE SMITH

Hiking Club, 2; Literary Club, 3, 4; Class Poet, 4; Baseball, 2, 3; Glee Club, 1, 2; Superlative, Most Dependable, Most Studious.

## L. L. SMITH

Hiking Club, 1; Glee Club, 4; Agricultural Club, 1, 2, 3, 4; Dancing Club, 3, 4.

## RAYMOND SUTTON

Agricultural Club, 1, 2, 3, 4; Hiking Club, 2; Glee Club, 4; Literary Club, 4.

## WILLIE STRICKLAND

Home Economics Club, 1; Glee Club, 1, 4; Hiking Club, 2; First Aid Club, 3; Dramatics Club, 4; Beta Club, 3, 4.

## MILDRED SWINK

Junior Glee Club, 1; Senior Glee Club, 2, 3, 4; Dancing Club, 1, 3; Hiking Club, 2; Dramatics Club, 4; Annual Staff, 4.

## MARGARET TROUTMAN

Home Economics Club, 1, 2; Hiking Club, 2; Dancing Club, 4; First Aid Club, 3; Glee Club, 1, 4; *Spectator* Staff, 3.

## MYRON TROUTMAN

Future Farmers of America, 1, 2, 3, 4; Hiking Club, 2; Dancing Club, 3, 4; Glee Club, 1, 2, 4.

## SARAH WEAST

Cannon High School, 1, 2; Dancing Club, 3, 4; Class Prophet, 4; Junior Play, 3; Manager Student Store, 4; Editor *Spectator*, 4; Superlative, Most Dependable.

## NEAVONNE WENSIL

Home Economics Club, 1, 3; Hiking Club, 2; Dancing Club, 4; Glee Club, 4.

## JOHNNIE WILLIAMS

Football, 1, 2, 3, 4; Baseball, 3, 4; Basketball, 2, 3, 4, Manager, 2; Monogram Club, 3, 4; Vice-President Hiking Club, 2; Science Club, 1; Vice-President Sports Club, 3; President Class, 1; Glee Club, 1, Treasurer, 2; Junior Play, 3; Senior Play, 4; Junior Marshal Band, 1, 2; Annual Staff, 1, 3, 4, Photo Editor, 3, Editor-in-Chief, 4; Class Treasurer, 4; Senior Superlative, Most Popular Boy.

## IDA B. WILHELM

Home Economics Club, 1; Hiking Club, 2; Dancing Club, 3, 4; Superlative, Most Talkative.

## JUANITA WRIGHT

Home Economics Club, 1; Hiking Club, 2; Dancing Club, 3, 4; Glee Club, 4.





# SHIP'S LOG OF CLASS OF '44

THE TWENTY-EIGHTH DAY OF August, 1940, the "Voyager" set sail with one hundred and thirty-six young and inexperienced crew members aboard. We were going to wear off that inexperience by having our first party. It was given in Apprentice Seaman Frances Ivey's cabin.

We worked hard under the command of Johnny Williams, Jackie Taylor, Frances Ivey, and Lois Campbell.

Valentine's day came and we selected as our king and queen of hearts, Baxter Sechler and Thresa Thornburg.

In the spring we had a big wiener roast on a deserted island which was fun for all.

After four months' clear sailing with one hundred crew members, now we started another struggle with our new commanders, Perry Wilson, Cora Belle Rymer, Margaret Shinn, and Johnny Williams.

In December war started and it became rough sailing from there on. Despite the war we had a very successful party in the ship's gymnasium. We felt that we were really old time sailors now, because we really knew our way about our ship.

In August, with only ninety-two members, we started out with a new group of commanders, Jenny Ruth Woody, Cora Belle Rymer, Louise Roseman, and Lois Campbell.

In the fall we began our sale of stationery. The money was to go toward our banquet we were going to give to our upperseamen in the spring. We became very downhearted when we found that the shortages that the war had caused would prevent us from having our banquet. We tried to please our upperseamen by having a prom. This was given to us by our "Admiral Grade Parents." It was formal, the girls all looked lovely and

the boys were handsome as could be. We all had a good time and all were tired when the ship's bell rang out 24 o'clock.

On March 19, several members of our crew gave us a grand performance in "Who Killed Aunt Caroline," under the direction of Admiral Inez Sturkey.

Now that we have started out on the last knot of our long voyage, with fifty-seven crew members, we look back on the apprentice seamen as green, but we remember when we were on the same ship and we sympathize with them.

We were very proud and dignified Captains when we received our rings, although we had seen many like it, we were still proud of them and told everyone about them.

We sold magazine subscriptions because we needed money for many things.

Several members of our crew worked hard and gave us a grand performance of "Shoot the Works," under the direction of Admiral Mary Gladys Fisher.

This year we had as our commanders, Lamar Dorton, Audrey Medlin, Ray Eddleman, and Cora Belle Rymer.

Admirals Mendenhall and Fisher picked a group of Captains to help with our YELLOW JACKET and we have worked hard to make it the best ever.

We tried to forget our school work for one night and we all went skating. After many bruises we all went to our cabins and tried to rest. (There were no bones broken, I don't think.)

Now that our shore is in sight, we hate to land. We have all had a swell time on our voyage, even though there were many that became seasick and didn't manage to complete the voyage.

CORA BELLE RYMER,  
*Class Historian.*





# LAST WILL AND TESTAMENT

I, HATTIE ALLEY, do will my big mouth and my longing for something to eat to Druscilla Roseman.

I, Althena Bostian, do will my fast talk and ability to go places in a hurry to Imogene McCool.

I, Billy Beaver, do will my ability to keep quiet in class to Bruce Goodnight.

I, Juanita Bostian, do will my giggles and nitwit personality to Annie Karriker.

I, Evelyn Brackett, do will my part as Gene Corriher's wife in the Senior Play to Mildred Harkey.

I, William Parks Beaver, do will "dear old 80" to Earl Blackwelder.

I, Lois Campbell, do will my ability to fall in love to Clay Kimball.

I, Neavonne Wensil, do will my radiant smile and my friendly ways to Helen Beaver.

I, Gene Corriher, do will my combed hair to David Tyson.

I, Hazel Correll, do will my nickname, "Scrub," to Walter Ramseur.

I, Lucille Davis, do will my love for the Navy to Colleen Mills.

I, Martha Deal, do will my love for Goodnights to Hubert Smith.

I, Lamar Dorton, do will my Captaincy of the basketball team to "Clam" Cavin.

I, Lavenia Eddleman, do will my bashfulness to Rena Linn.

I, Allie Mae Ervin, do will my love for a front seat in class to Alta Lee Abernathy.

I, Ray Eddleman, do will my passion for neckties to "Red" Beaver.

I, Ophelia Galloway, do will my quiet and studious ways to Maxine Alexander.

I, Lucille Harris, do will my ability to speak only when I'm spoken to to Betty Chastian.

I, Hoyle Garver, do will my manly physique to Martin McLaughlin.

I, Pearl Holshouser, do will my love for the typing teacher to Fred Freeze.

We, Glenn Funderburke and Myron Troutman, do will our love for "cute hats" to Dwight Roseman and Carl Sloan.

I, Frances Ivey, do will my love for a Ray to Grace Troutman.

I, Veta Karriker, do will my dark complexion and beautiful brown eyes to Ray Karriker.

I, Helen Leazer, do will my desire to come to school every day to Bruce Goodnight.

I, Lillian Linker, do will my flirty ways to Mary Alice Ketner.

I, Charlie Ray Marshall, do will my nickname, "Angel," to "Crip" Stamey.

I, Audrey Medlin, do will my athletic ability to Virginia Lee Allman.

I, Phyllis Owens, do will my ability to get a diamond to Miss Smith.

I, Marjorie Patterson, do will my steady romance to Mary Edith Weddington.

I, Harold Sechler, having so many wonderful traits that I can't make up my mind who to will what to.

I, Bonnie Poarch, do will my basketball suit to Betty Roberts.

I, Evelyn Petrea, do will my desire to be a glamour girl to Ruby Edwards.

I, Frances Poteat, do will my love for French to Jacqueline Russell.

I, Jackie Smith, do will my ability to make good grades in French to Samuel Brown.





I, Faye Propst, do will my love for a soldier to Annie Mae Weddington.

I, Louise Roseman, do will my desire for a boy friend to Evelyn Slough.

I, L. L. Smith, do will my beautiful voice to Patsy Ruth Whitaker.

I, Cora Belle Rymer, do will my love for Weddington to Tom Corriher.

I, Evelyn Sanders, do will my good sportsmanship and my ability to make witty remarks to Frances Poole.

I, Rachel Sanders, do will my long hair and long fingernails to Nellie Beaver.

I, Raymond Sutton, do will my bass voice to Kenneth Flemming.

I, Mary Sue Sechler, do will my love for soldiers to Hazel Slough.

I, Margaret Shinn, do will my nickname, "Pug," to Mary Agnes Jackson.

I, Louise Sloop, do will my friendly ways and ability to hold my temper to Kathryn Sloop.

I, Asbury Harkey, do will my beautiful laugh to Miss Glenn.

I, Willie Strickland, do will my office as Treasurer of the Beta Club to John Henry Yost.

I, Mildred Swink, do will my tenor voice to Leon Karriker.

I, Zelia Thomas, do will my ability to stay at Landis High School as long as possible to Martin McLaughlin.

I, Bessie Overcash, do will my position in "lovers' lane" to Red Beaver and Katherine Roberts.

I, Margaret Troutman, do will my love for Deals to Margaret Campbell.

I, Leonard Linn, do will my love for Pre-Flight to "Trimmie" Shoemaker.

I, Sarah Weast, do will my position as Manager of the Senior Class Store to Mary Elizabeth Bostian.

I, Richard London, do will my love for the Saturday night late show to "Flop" Ramseur.

I, Ida B. Wilhelm, do will my position as most talkative person of Senior Class to Dorothy Sechler.

I, Juanita Wright, do will my ability to capture a soldier's heart to Miss Glenn.

I, Johnny Williams, do will my love for Druscilla to Jerry Pless.

BESSIE OVERCASH,  
JOHNNY WILLIAMS,  
*Testators.*



# THE FUTURE OF THE "VOYAGER"

WE'RE SHOVING OFF NOW — Anchors Aweigh. We are on the ship "Voyager." Off we go to see what the future has held for our classmates of '44. The year 1954, the time January.

Leaving from New York we wave goodbye to the Statue of Liberty. After being on the water for many hours we see the captain of the ship coming toward us, who is none other than Larry Beaver. Among the other sailors on the ship we meet Raymond Sutton and Billie Beaver.

On the third day out we arrive at Argentina. We stayed there overnight at the famous "Eddleman" Hotel, owned by Ray Eddleman, Jr., and the manager being Myron Troutman. The next day we went to a restaurant for breakfast and found our classmates Louise Sloop and Althenia Bostian as owners.

After leaving Argentina we resumed our journey. In March we arrived on the California coast. Going ashore we went to a famous resort where we could swim, dance, and enjoy sports. We sat at a side table and watched the famous dance team who was none other than Johnnie Williams and Evelyn Sanders. After greeting our friends we went in swimming and watched the nationally known diver, Gilreath Davis. On our third day in California we started a trip to Hollywood to see if any of our classmates had chosen acting as a career. On the way we collided with another car and all of us were taken to the hospital. Driving the ambulance was Richard London. After Drs. Evelyn Petrea and Leonard Linn had seen that we were not hurt we were released. Driving, we passed many homes, and was not surprised to see Bonnie Poarch and William Parks Beaver cleaning the yard of their

new home. After talking to them we resumed our trip to Hollywood.

Upon our arrival we went to the Stage Door Canteen where we saw Lillian Linker, Frances Poteat and Juanita Wright at their old job. After leaving there we went to a country home owned by Lavenia Eddleman and Pearl Holshouser. Near the home was a famous school for girls and among the teachers were Ophelia Galloway, Allie Mae Erwin, and Willie Strickland. From there we went to the studios. Among the great stars were Lois Campbell and Charlie Ray Marshall. Hattie Alley was working in the cowboy pictures with Roy Rogers. Frances Ivey had won her second Academy Award as a Veronica Lake. Among the famous comedians were Harold Sechler and Glenn Funderburke. After staying in California for a week we continued our journey and sailed to Hawaii. We arrived there early in the morning and we were all tired and hungry. We went ashore and were having a large feast when none other than Bessie Overcash and Gene Corriher invited us to join them. After the feast Bessie, Gene, and their friends, Helen Leazer and Margaret Troutman showed us around the beautiful island. We were told that an airplane view of the island was very beautiful so we started out to find a plane. Boarding the plane we were surprised to see Asbury Harkey as pilot and Hoyle Garver as co-pilot. After sitting back in our seats the hostess brought us coffee and cakes. She was none other than our own Faye Propst. In about an hour we were back on the ground and from there we went to a big pineapple plantation. The prosperous owner, Lamar Dorton, and working with him was Marie Lipe and Phyllis Owens. From there we went to the School of Outstanding Speakers where we found Ida B.





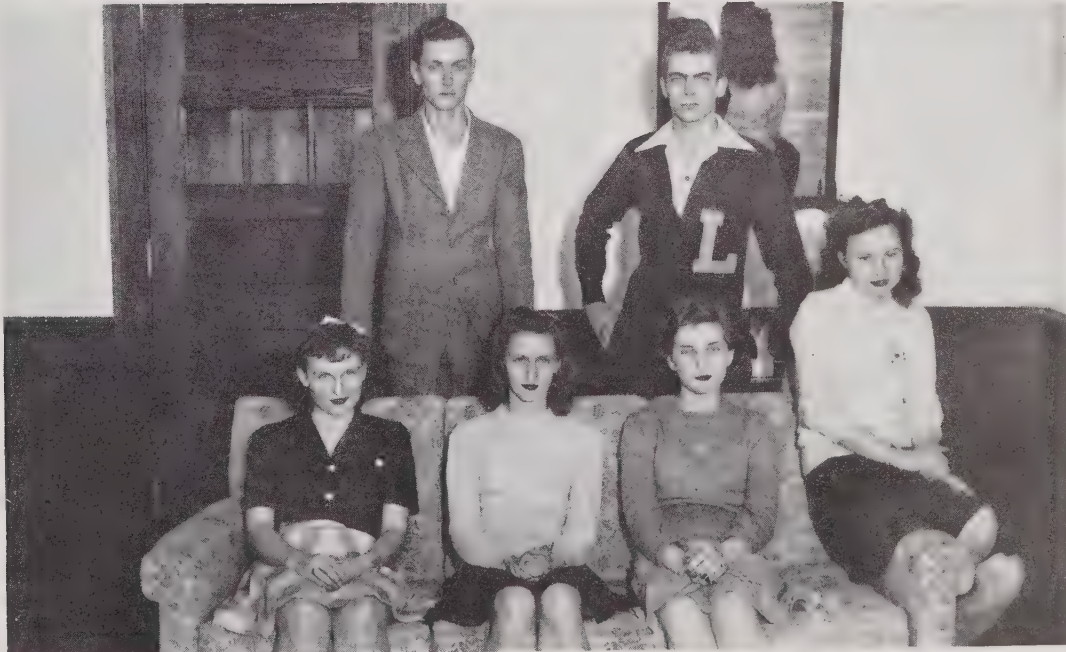
Wilhelm and Evelyn Brackett still talking. Among the girls who were working in offices in New York were Mary Sue Sechler and Marjorie Patterson. After seeing New York we went back to our ship and sailed to Wilmington, N. C. Going ashore we decided to visit a few of the high schools to recall our old school days. We went to the gymnasium where we saw Hazel Correll and Zelia Thomas coaching the girls in basketball, and among the teachers there we saw Veta Karriker and Lucille Harris, who had overcome their bashfulness.

Then we decided to see if we could see the married members of our class. We saw Sarah Weast—in her dream home. Marvin had returned and still with Sarah we found

Lucille Davis who lives next door and was also married. Going on we saw Nevonne Carter Wensil who had a home of her own too.

Startled to find we had seen all of our old classmates of '44, we returned to the ship. Sailing back to New York we secretly wished all our classmates success forever. In August we were back in New York from where we had started. Reluctantly we left the ship to take our places in the new world that had unfolded before us. And leaving behind the wonderful "Voyager" which had enabled us to see our classmates once more.

SARAH WEAST,  
 BONNIE POARCH,  
*Prophets.*



*Seated:* Bessie Overcash, *Testator*; Bonnie Poarch, *Prophet*; Sarah Weast, *Prophet*; Cora Belle Rymer, *Historian*.  
*Standing:* Jackie Smith, *Poet*; Johnny Williams, *Testator*.





SARAH WEAST  
JACKIE SMITH

MOST DEPENDABLE

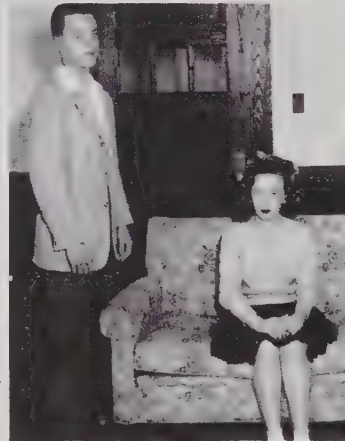


LOIS CAMPBELL  
RAY EDDLEMAN

MOST LIKELY TO SUCCEED



MOST STUDIOUS  
OPHELIA GALLOWAY  
JACKIE SMITH



MOST DIGNIFIED  
EVELYN PETREA  
RAY EDDLEMAN



MOST POPULAR  
HATTIE ALLEY  
JOHNNY WILLIAMS



FRIENDLIEST  
LOUISE ROSEMAN  
HAROLD SECHLER



MOST ATHLETIC  
LAMAR DORTON  
AUDREY MEDLIN



BEST LOOKING  
MARGARET SHINN  
LARRY BEAVER

## SENIOR SUPERLATIVES







BEST SPORTS  
EVELYN SANDERS  
WILLIAM PARKS BEAVER



MOST BASHFUL  
LAVENIA EDDLEMAN  
GILREATH DAVIS



IDA B. WILHELM  
HAROLD SECHLER

MOST TALKATIVE



AUDREY MEDLIN  
LAMAR DORTON

BEST ALL AROUND



BIGGEST FLIRTS  
FRANCES IVEY  
MYRON TROUTMAN



CLASS BABIES  
EVELYN SANDERS  
CHARLIE RAY MARSHALL



WITTIEST  
HATTIE ALLEY  
JACKIE SMITH

## SENIOR SUPERLATIVES





# THE JUNIOR CLASS

## OFFICERS

*President* . . . . . GRACIE TROUTMAN  
*Vice-President* . . . . . HELEN BEAVER  
*Secretary* . . . . . MARY EDITH WEDDINGTON  
*Treasurer* . . . . . KENNETH LINN  
*Advisers* . . . . . MRS. INEZ STURKEY AND MRS. MYRTHA DORON

*First Row:*

Maxine Alexander  
Helen Beaver  
Nellie Beaver  
Junior Billings  
Mary Elizabeth Bostian  
Marie Bostian  
Bobbie Broome

*Second Row:*

Samuel Brown  
Connie Butts  
Edith Cavin  
Carl Coone  
Thomas Corriher  
Helen Crowe  
Annie Johnson Dayvault

*Third Row:*

Evelyn Deal  
Peggy Deal  
Ralph Dixon  
Ruby Edwards  
Cora Mae Ennis  
Kenneth Flemming  
Fred Freeze

*Fourth Row:*

Helen O. Freeze  
Helen Garver  
Paul Goodman  
Bruce Goodnight  
Mary Belle Goodnight  
Gladys Hampton  
Mildred Harkey

*Fifth Row:*

Mary Agnes Jackson  
Annie Karriker  
Mary Alice Ketner  
Clay Kimbell  
Troy Lawrence  
Kenneth Linn  
Rena Linn

*Sixth Row:*

Mary Lee Lipe  
Imogean McCool  
James Miller  
Coleen Mills  
Elizabeth Overcash  
Everette Overcash  
Gail Stewart Payne

*Seventh Row:*

Frances Poole  
Walter Ramseur  
Betty Roberts  
Druscilla Roseman  
Dwight Roseman  
Jacqueline Russell  
Alene Shaver

*Eighth Row:*

Dorothy Sechler  
Earl Sloan  
Perry Sloop  
Evelyn Slough  
Hazel Slough  
Katherine Smith  
Wilma Smith

*Ninth Row:*

Betty Jean Steele  
Carl Sutton  
Daroline Sweatte  
Edward Tomlin  
Mildred Triage  
Grace Troutman  
David Tyson

*Tenth Row:*

Louise Upright  
Thelma Weatherman  
Mary Edith Weddington  
Anna Mae Weddington  
John Henry Yost











# THE SOPHOMORE CLASS

## OFFICERS

*President* . . . . . LEONARD CROSS  
*Vice-President* . . . . . BEATRICE PAGE  
*Secretary* . . . . . HERMAN ENOCHS  
*Treasurer* . . . . . GEORGE PLESS  
*Advisers* . . . . . MISS GOODMAN, MRS. LEAFE, MISS MILLS, AND MISS GLENN

*First Row:*

Virginia Allman  
 Frances Barringer  
 Delsie Beaver  
 Sibyle Beaver  
 Wayne Beaver  
 Junior Blackwelder  
 George Belk

*Second Row:*

Katheryn Bostain  
 Tommy Bostain  
 Margaret Campbell  
 Wade Carter  
 James Cavin  
 Betty Chastian  
 Hila Crowe

*Third Row:*

Juanita Daniels  
 Ruth Davis  
 Lala Deal  
 Mabel Frances Deal  
 Foy Deal  
 Betty Eddleman  
 Bonnie Edwards

*Fourth Row:*

Ruth Edwards  
 Coit Ennis  
 Herman Enochs  
 Mary Frances Foutz  
 Clyde Goodman  
 Ola Mae Goodman  
 Daisy Goodnight

*Fifth Row:*

Doris Heglar  
 Geraldine Helms  
 Frances Hodge  
 Audrey Karriker  
 Cecil Karriker  
 Jerline Kelly  
 Paul Kennerly

*Sixth Row:*

Billy Kimball  
 Jack Leazer  
 Charles McCarn  
 Clifford McCorkle  
 Martin McLaughlin  
 Helen Morrison  
 Helen Murdock

*Seventh Row:*

Frank Overcash  
 Beatrice Page  
 Harold Parks  
 Frances Pless  
 George Pless  
 Jerry Pless  
 Katheryn Roberts

*Eighth Row:*

William Roberts  
 James Shoemaker  
 Katheryn Sloop  
 Hubert Smith  
 Paul M. Smith  
 Harold Stamey  
 Marjorie Suttle  
 Lucille Swicegood

*Ninth Row:*

Betty Lou Tomlin  
 Ramona Troutman  
 Elizabeth Turner  
 Geroliné Walker  
 Doyal Weatherman  
 Kathleen Weaver  
 Mary Frances Weddington  
 Patsy Whitaker











# THE FRESHMAN CLASS

## OFFICERS

*President* . . . . . HUSTON CAVIN  
*Vice-President* . . . . . WALTON CROWDER  
*Secretary* . . . . . TOMMY LINN  
*Advisers* . . . MISS SHULENBERGER, MRS. PARSONS, MR. PARKER, AND MISS MORGAN

### MISS MORGAN'S HOME ROOM

Frances Bost	Doris Karriker	Dorothy May Starnes	Billy Foutz
Rachel Deal	Anna Catherine Linn	Betty Jean Thompson	Donald Hamilton
Betty Jane Follette	Ruth Livingston	Margene Weatherman	George Hinson
Mary Catherine Hart	Betty Fay McLain	Joyce Brookshire	Anthony Osborne
Rachel Holland	Jean McLain	Bobby Arthurs	Clyde Patterson
Sarah Hubbard	Virginia McLaughlin	Gene Campbell	Raymond Sechler
Alice Nell Karriker	Phyllis Overcash	Bobby Coffey	Morris Watts
	Thelma Sloan	Bobby Fish	

### MR. PARKER'S HOME ROOM

Ruth Brackett	Ellen Eagle	Rena Smith	Lowell Little
Annie Lee Myers	Naomi Bently	Lewis Overcash, Jr.	Tommy Linn
Margaret Sechler	Donna Jane Bost	Gordon Beaver	Bobby Cross
Madilene Daugherty	Betty Sue Elder	Bobby Butts	Paul Dayvault
Dorothy Christopher	Evelyn Griffin	Jim Corriher	Kenneth Helms
Ula Mae Barnes	Catherine Eagle	Clifford Eugene Hampton	Floyd Bost
Ruth Patterson	Annie Smith	Eddie Ray McLain	Paul Sweat
	Evelyn Adams	George Troutman	

### MISS SHULENBERGER'S HOME ROOM

Floreita Daniels	Lila Shulenberger	Mildred Thompson	Billie Freeze
Janet Faw	Lorene Stiller	Jacky Dayvault	Billy Wilhelm
Bernice Stallings	Frances Yates	Hayden Thomas	Johnny Dayvault
Betty Lee Overcash	Doris Jean Cook	Herman Billings	Houston Cavin
Nancy Smith	Virginia Litaker	William Deadmon	Jimmie Bostian
Edith Mae Henley	Doris Plaster	Jack Wilson	Harry Lee Sechler
Elcanor Cavin	Joanna Russell	Norman Basinger	

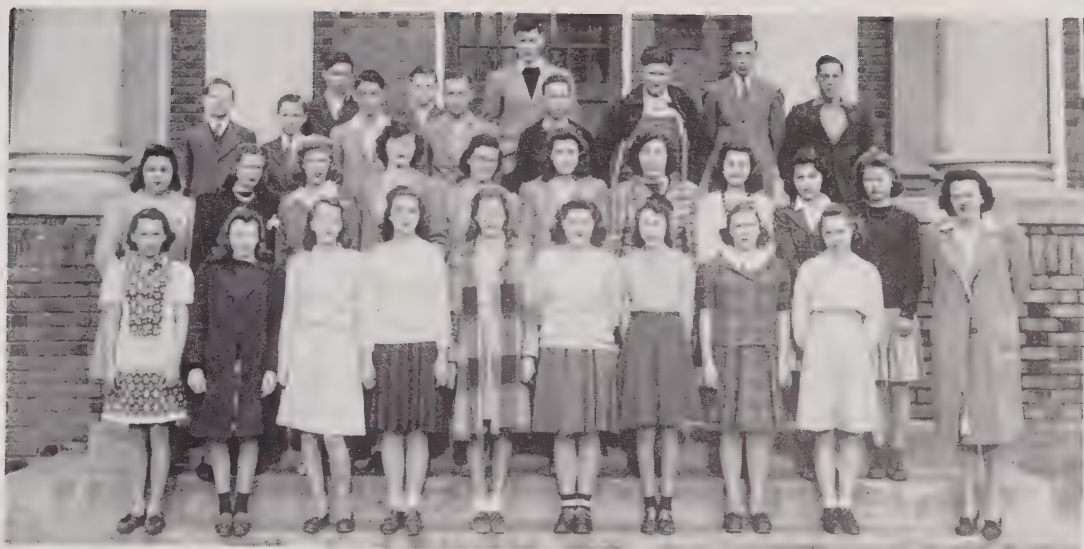
### MRS. PARSONS' HOME ROOM

Azile Berry	Coleen Holshouser	Earl Fain	Marvin Barlowe
Jean Turner	Myrtle Browley	Imogene Allmon	J. G. Ebird
Peggie Correll	Marcus Ebird	Faye Shuffler	Jackie Bost
Sue Corriher	Walter Crowder	Albert Coone	F. T. Foster
Pauline Overcash	Cephus Brown	Lenore McLaughlin	Henery Honeycutt
Lois Boothe	Lennie Campbell	Leon Karriker	Junior Yost

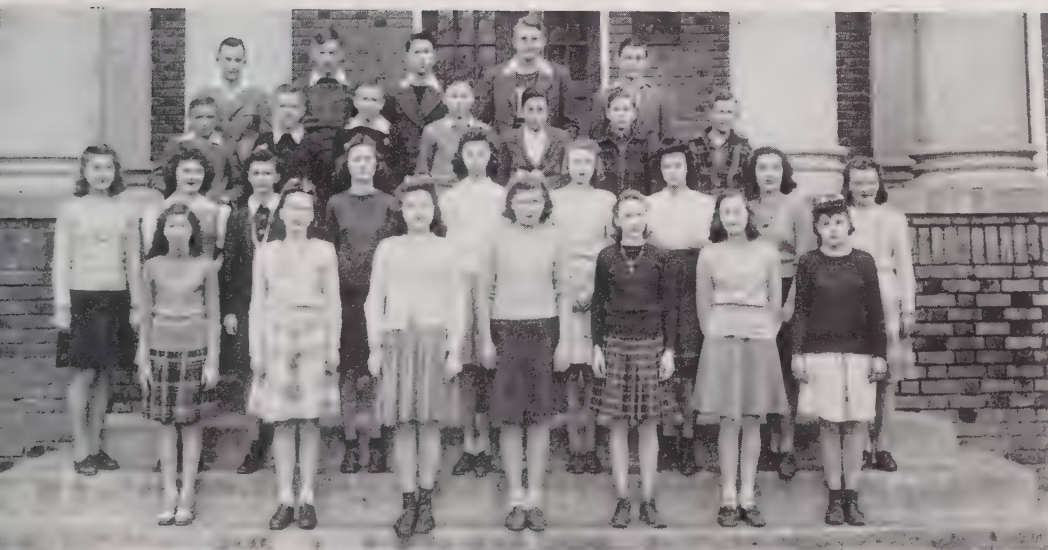




*Miss Morgan's  
Home Room*



*Mr. Parker's  
Home Room*



*Miss Shulenberger's  
Home Room*



*Mrs. Parsons'  
Home Room*

# *Activities*





# The YELLOW JACKET STAFF

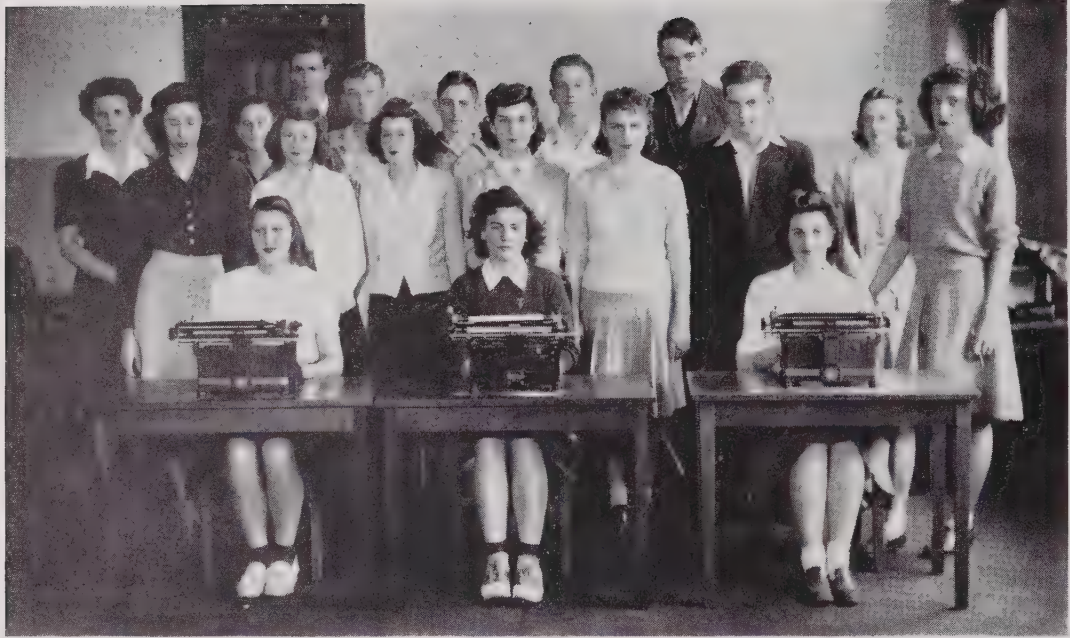


MISS DORIS MENDENHALL  
*Adviser*

## STAFF

<i>Editor-in-Chief</i> . . . . .	JOHNNY WILLIAMS
<i>Business Manager</i> . . . . .	MILDRED SWINK
<i>Associate Editor</i> . . . . .	AUDREY MEDLIN
<i>Associate Business Manager</i> . . . . .	LAMAR DORTON
<i>Advertising Manager</i> . . . . .	WILLIAM PARKS BEAVER
<i>Assistant Advertising Manager</i> . . . . .	RACHEL SANDERS
<i>Organizations Editor</i> . . . . .	BONNIE POARCH
<i>Assistant Organizations Editor</i> . . . . .	FRANCES IVEY
<i>Sports Editor</i> . . . . .	HATTIE ALLEY
<i>Photo Editor</i> . . . . .	RAY EDDLEMAN
<i>Features Editor</i> . . . . .	EVELYN SANDERS
<i>Assistant Features Editor</i> . . . . .	CORA BELLE RYMER





## THE SPECTATOR STAFF

*First Row, Seated:* Ida B. Wilhelm, Circulation Manager; Betty Roberts, Sports Editor; Audrey Medlin, Senior Class Reporter.

*Second Row:* Miss Glenn, Adviser; Evelyn Slough, Assistant Editor; Hazel Slough, Special Reporter; Sarah Weast, Editor; Bessie Overcash, Special Reporter; Clay Kimball, Assistant Editor; Colleen Mills, Junior Class Reporter.

*Third Row:* Mrs. Parsons, Adviser; Tommy Linn, Freshman Class Reporter; Jackie Smith, Special Reporter; Walter Ramseur, Circulation Manager; Kenneth Flemming, Business Manager; Tommy Bostian, Sophomore Class Reporter; Martin McLaughlin, Agricultural Reporter; Miss Shulenberg, Adviser.

Published Monthly by Landis High School.

Member Southern Interscholastic Press Association.





# BETA CLUB

"THE PROMOTION OF THE ideals of honesty, service, and leadership among high school students" are the words which constitute the purpose of our Beta Club. Contrary to the belief of some people, the Beta Club of our school and every school is a non-secret organization which has as objectives to its goal of leadership: encouragement of effort, promotion of character, stimulation of achievement, and encouragement and assistance to students to seek higher education.

Members of the Beta Club must be qualified to enter this organization, and must be approved by the high school faculty and the club members. Before anyone can qualify he must be of good mentality and character, and have creditable achievement and a commendable attitude.



# MONOGRAM CLUB

LANDIS HIGH HAS ALWAYS been known for its great achievements in the world of sports and for the athletes that have taken part in them. Those who have worked hard enough to earn a letter are qualified to be in the Monogram Club.

Letters were for the first time given this year to band students for four years of music.



# LANDIS HIGH SCHOOL BAND

UNDER THE DIRECTION and patience of Miss Marguerite Smith the Band has progressed with satisfaction in its third year of work.

At one of the Parents' Programs the discussion of uniforms for the Band was considered. The approval to go ahead and order the uniforms was unanimous. This was made possible through the work of the City, School Administration, and Band parents.

*First Row:* Phil Lipe, Kyles Carpenter, Gifton McCreary, Billy Noah, Dale Mills.  
*Second Row:* David Tyson, Lois Turner, Bobby Bost, Tommy Cannon, Gene Parsons, Kenneth Fink, Arthur Lee Miller, Johnny Ritchie, Deane Miller, Neta Mae Clodfelter, Tootsie Alexander.  
*Third Row:* Elizabeth Cobler, Phillip Bostain, Joel Lucas, Milton Hubbard, Sonny Beaver, Guy Ritchie, Jr., Herbert Burris, Tommy Taylor, Hazel Huffman, Jean Turner, Miss Smith.  
*Fourth Row:* Virginia Allman, Lois Campbell, Jack Freeman, Billy Sells, Carl Freeman, Jacky Dayvault, William McCreary, Kenneth Alexander.  
*Fifth Row:* Elizabeth Turner, Lewis Overcash, Jr., Mable Frances Deal, Betty Lipe, Carolyn Lipe, Sibyle Beaver, Kenneth Sloop, Billy Ross Kimball.  
*Sixth Row:* Betty Lou Tomlin, Doris Plaster, Bruce Goodnight, Tommy Bostain, C. A. Lowder, Jacqueline Russell, Mary Margaret Correll, Hoyle Sullivan.  
*Seventh Row:* Junior Billings, Foy Deal, Ray Eddleman, Walter Ramseur, George Pless, Kenneth Fleming, Samuel Brown, Johnny Dayvault. *Not in Picture:* Earl Blackwelder, Marvin King.



# THE SENIOR GLEE CLUB

MISS SMITH

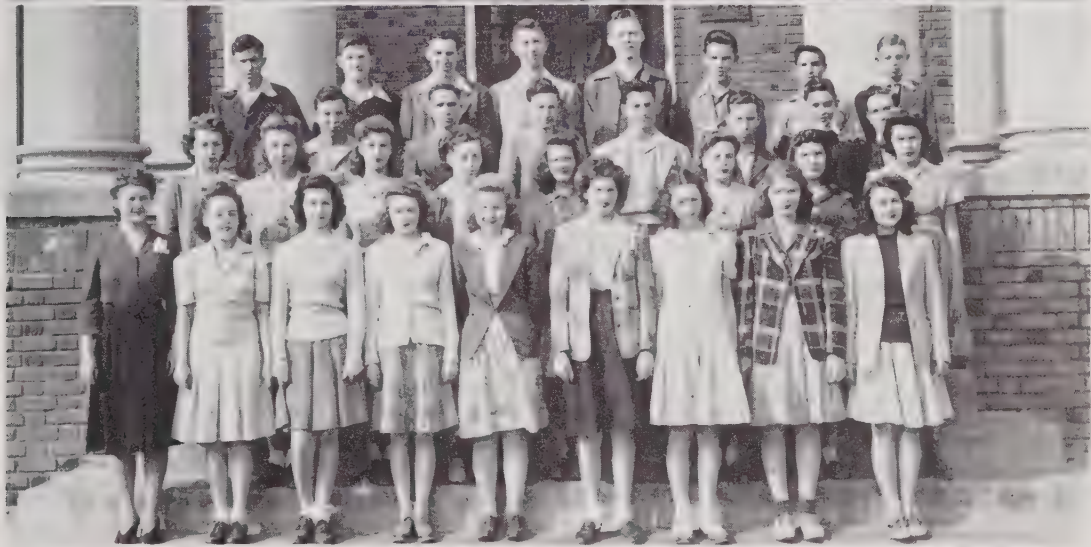
THE SENIOR GLEE CLUB this year was under the direction of Miss Marguerite Smith, assisted by Miss Mary Gladys Fisher. The choir presented programs at several local churches, in chapel, and at commencement.





# FUTURE FARMERS OF AMERICA

IN 1941 MR. R. C. PITTMAN, JR., came to Landis High School and in his first two years about 25,000 chickens were raised. This year we are raising 50,000 chicks. Several boys are keeping hens and are selling eggs to the hatchery at a premium. One of our boys won \$75 in a Victory Egg contest. Glenn Funderburke won second and Myron Troutman fifth. We have the best equipped shop and classroom in the state and have added a blacksmith shop and have all the equipment we need.



## THE CO-ED HOME EC. CLUB

THIS CLUB WAS ORGANIZED for the purpose of giving boys and girls the opportunity to know themselves and each other better. The theme of the year was "Personal Development." We delved into a variety of topics such as Boy and Girl Relationships, Etiquette, and Hobbies.

We chose for our emblem Betty Lamb which is also the emblem of the American Home Economics Association. Our motto: "Good, better, best, we'll never let it rest until the good is better and the better best."

### OFFICERS

<i>President</i> . . . . .	BETTY EDDLEMAN
<i>Vice-President</i> . . . . .	AUDREY KARRIKER
<i>Secretary-Treasurer</i> . . . . .	BILLY BLACKWELDER
<i>Class Adviser</i> . . . . .	MISS ALLIE MILLS



# DRAMATICS CLUB

THE PURPOSE OF THE DRAMATICS CLUB are several. First—to interest the pupils in gaining poise. Next to acquaint them with the art of facial makeup which is quite a fascinating study. Other items of interest we take up are: Study and arrangement of stage and stage furniture, pantomimes, and the simple elements of acting.

## OFFICERS

<i>President</i> . . . . .	HATTIE ALFY
<i>Vice-President</i> . . . . .	FRANCES IVEY
<i>Secretary</i> . . . . .	HELEN GARVER
<i>Treasurer</i> . . . . .	RENA LINN
<i>Class Adviser</i> . . . . .	MISS DORIS MENDENHALL



# ART CLUB

THIS IS THE SECOND successful year of the Art Club. The development of individuality in style and thought is stressed, each one expressing himself through his work. The girls do designing and sketches and the boys draw animals and figures, all from actual photographs. From this recreation and these budding efforts it is hoped that a happy leisure or a life career may result.





# GIRLS' PHYSICAL EDUCATION CLUB

MISS GOODMAN

THE ACTIVITIES OF THE Girls' Physical Education Club consists of playing lawn and table tennis, softball, shuffleboard, badminton, and volley ball. Hiking and track events are also part of our activities. Quiet as well as active games are planned and directed by members.

Our plans are to set up a point system whereby students can earn monograms without being a member of the athletic teams.



# BOYS' SPORT CLUB

THE PURPOSE OF THE Sport Club is to enjoy participation in various sports such as hiking and baseball. Since the club's organization the members have made several trips by hiking and enjoyed playing several games.



# BALLROOM DANCING CLUB

THE DANCING CLUB was organized for the purpose of teaching students to dance. Many of our boys and girls don't know how, but Miss Fisher, Miss Smith, and Mrs. Doran have been doing a good job to try to teach them.

We have selected our officers and have decided to pay dues. This money will be spent for some new records.



# THE LIBRARY CLUB

THE PURPOSE OF THE Library Club is to sponsor a greater interest among the students in the use of books and library service and to stimulate reading interest among the students.

Meetings of the club are varied from the study of the organization and management of the library to student programs, in which public speaking is stressed and pupil participation is practiced.

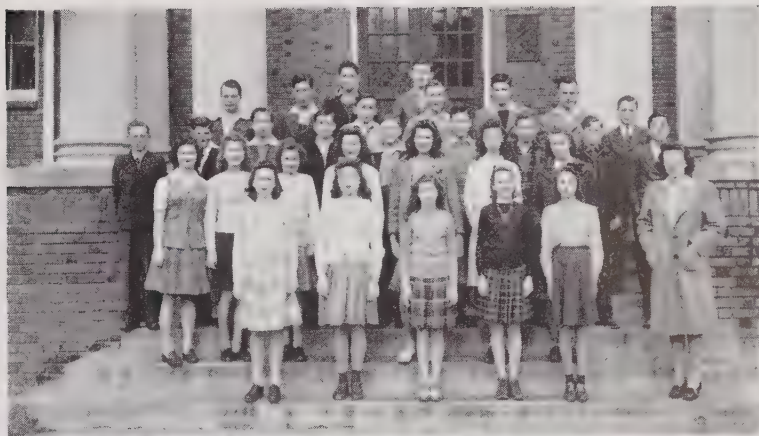




## THE HIKING CLUB

MISS MORGAN, *Adviser*

THE HIKING CLUB was formed for the purpose of aiding in the development of sound physical bodies through exercise. It is composed of about thirty members who are interested not only in hiking but in other outdoor activities as well.



## PUBLIC SPEAKING

MR. PARKER, *Adviser*

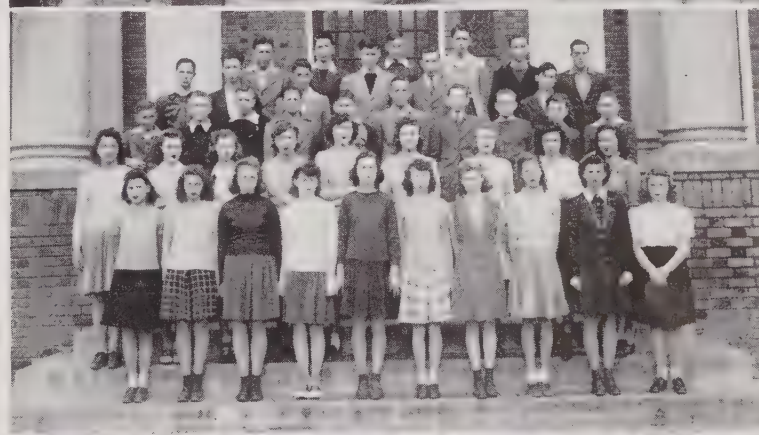
THE PURPOSE OF THE Public Speaking Club is to study the Fundamental Principles of Public Speaking and for each member to get some practice in speaking before an audience. We hope this club will help these students in any oral work they will have to do in their classes as well as speaking in activities outside of school.



## DRAMATICS CLUB

MISS SHULENBERGER, *Adviser*

OUR DRAMATICS CLUB has studied Pantomime. We have had lots of fun with our "skits." Though we have no Robert Taylors and Hedy Lamars, we think that we have gotten over the experiences of stage fright!



## THE SUB DEB

MRS. PARSONS, *Adviser*

THE OBJECT OF THE Sub Deb Club is to help its members in many ways. Concerning their personal appearance, attitude toward other girls, when to do certain things and when not to do others, how to become more popular, and one of the main objects is just having fun. Our Sub Deb Club is a member of the National Organization of the Sub Deb Club.





The Senior Class Presents  
 "SHOOT THE WORKS"

THREE ACT COMEDY

By  
 GRANT RICHARDS

CHARACTERS

*Kate Asworth*, an old maid owner of Restful Home for Restless People . . . . . AUDREY MEDLIN  
*Laura Ashworth*, who has her own ideas about choosing the man she'll marry . . . EVELYN SANDERS  
*Lucinda Livermore*, a wealthy old maid, and a guest at the Home . . . . . FRANCES IVEY  
*Lou Undine*, another guest at the Home . . . . . FAYE PROPST  
*Ruth Bright*, a nurse at the Home . . . . . EVELYN PETREA  
*Jud Clarendon*, a successful song writer . . . . . LAMAR DORTON  
*Homer Boylston*, interested in buying the Home . . . . . CHARLIE R. MARSHALL  
*Guy Priest*, a newspaper columnist . . . . . LEONARD LINN  
*Jake Moore*, Guy's bodyguard . . . . . WILLIAM P. BEAVER  
*Sally Hunt*, a reporter . . . . . BONNIE POARCH  
*Dex Newall*, also a reporter . . . . . JOHNNY WILLIAMS  
*Joshau Perkins*, a millionaire "dandy" . . . . . GENE CORRIHER  
*Bessie Perkins*, his wife . . . . . EVELYN BRACKETT

SYNOPSIS

ACT ONE: Restful Home for Restless People, Living Room.  
 ACT TWO: Restful Home for Restless People, Living Room.  
 ACT THREE: Restful Home for Restless People, Living Room.

*Stage Manager* . . . . . WILLIAM P. BEAVER  
*Lights* . . . . . LEONARD LINN  
*Prompter and Director* . . . . . MARY GLADYS FISHER







The Junior Class Presents  
**“ROBINSON CRUSOE”**

THREE ACT COMEDY

By  
 WILLIAM LINDA

FRIDAY EVENING, MARCH 3, 1944, 8:00 O’CLOCK

CHARACTERS

*Ellen Robinson*, a direct descendant of Robinson Crusoe . . . . . EVELYN SLOUGH  
*Meta Robinson*, her timid sister . . . . . HAZEL SLOUGH  
*Mrs. Dwight Robinson*, their beautiful and accomplished mother . . . . . LOUISE UPRIGHT  
*Robinson Crusoe*, who is exiled to a desert island . . . . . WALTER RAMSEUR  
*Friday*, his faithful negro servant . . . . . DAVID TYSON  
*Mrs. Pierpont Drake*, vain and artificial . . . . . MARY E. BOSTAIN  
*Emily Drake*, her pretty daughter . . . . . MAXINE ALEXANDER  
*Ethel Cartwright*, a traveling missionary . . . . . HELEN CROWE  
*Donna*, a beautiful slave girl . . . . . DRUSCILLA ROSEMAN  
*Jeff Snyder*, in love with Emily . . . . . JUNIOR BILLINGS  
*Ben Hawks*, who is out for himself . . . . . BRUCE GOODNIGHT  
*Captain Frederick Salvatore*, a Spanish Captain . . . . . KENNETH FLEMMING

SYNOPSIS

ACT ONE: A Corner of the Living Room of the Robinson Household in a Large Eastern City.

An Evening in Early Fall.

ACT TWO: Same as Act One Only Several Hours Later.

ACT THREE: Same as Act Two the Following Morning.

*Stage Manager* . . . . . ARCHIE YATES  
*Lights* . . . . . CONNIE BUTTS  
*Prompter* . . . . . NELLIE BEAVER  
*Director* . . . . . MRS. L. H. STURKEY



# *Athletics*







## CHEERLEADERS

*Left to Right:* Grace Troutman, Mary Edith Weddington, Helen Freeze, Mary Agnes Jackson, Helen Garver, Nellie Beaver, Rena Linn, Bobbie Broome, Hazel Slough.







## FOOTBALL

ONCE AGAIN AFTER MANY YEARS, eleven-man football was played at Landis High School under the guidance of Admiral T. F. Bostian.

More games were played this year than ever before. The small Landis team went up against some of the strongest teams in the state.

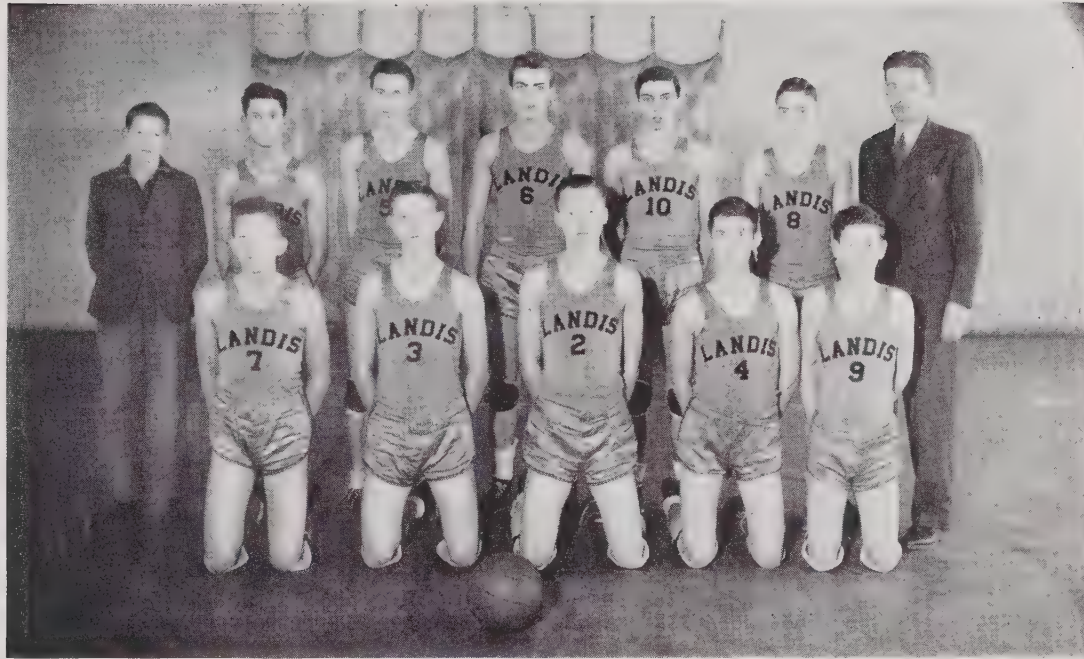
The biggest thrill of the season came in the first game with Mooresville, a strong passing and ground attack upset the "Blue Devils."

Captain Kyle Corriher was the offensive and defensive star of the team. Seaman Johnny Williams on the passing end and Seaman William Roberts of Holy Cross, on the receiving end formed a strong threat. The tackle positions were ably held down by William Beaver and Jerry Pless. In the center of the forward wall were guards Asbury Harkey and Ralph Dickson. The center was Herman Enochs. Leonard Linn, Archie Yates, and Paul Dayvault always did their part.

Despite many injuries the Landis team played good games against Mooresville, Badin, Concord "B," China Grove, and Barium Springs.







## BOYS' BASKETBALL

OUR MEN ON THE VOYAGER were very successful in basketball this year. The most exciting of these games were the ones with China Grove, Wincoff, Mooresville, Kannapolis, and also in the Mid-Piedmont Tournament.

Our boys were coached by Admiral H. A. McCreary, who gave the boys what it takes to be good ~~seamen~~ <sup>men</sup>. Captain Lamar Dorton, leading his men to a successful battle and came out scoring 325 points with our other seamen also scoring many points. Our voyaging seamen who will return to shore and who will leave our team are: Captain Lamar Dorton, Johnny Williams, Leonard Linn, Charlie Ray Marshall, and William Parks Beaver. The results of the season:

### BOYS' BASKETBALL TEAM

#### Front Row

Tommy Bostain . . . . .	Guard
Jerry Pless . . . . .	Guard
George Pless . . . . .	Center
Herman Enochs . . . . .	Forward
Charlie Ray Marshall . . . . .	Forward

#### Second Row

Donald Hamilton . . . . .	Manager
Leonard Linn . . . . .	Forward
William Roberts . . . . .	Guard
Johnny Williams . . . . .	Center
William Parks Beaver . . . . .	Guard
Lamar Dorton (Captain) . . . . .	Forward

#### Opponents Landis

China Grove—(Here) . . . . .	17	27
Barium Springs—(There) . . . . .	39	20
Spencer—(There) . . . . .	13	23
Mooresville—(Here) . . . . .	29	30
Kannapolis—(Here) . . . . .	51	22
China Grove—(There) . . . . .	22	34
Granite Quarry—(Here) . . . . .	11	28
Mooresville—(There) . . . . .	45	35
Kannapolis—(There) . . . . .	26	32
Cooleemee—(There) . . . . .	25	31
Barium Springs—(Here) . . . . .	32	31
Albemarle—(There) . . . . .	43	30
Salisbury—(Here) . . . . .	35	15
Granite Quarry—(There) . . . . .	18	20
Wincoff—(There) . . . . .	20	21





*Front Row:* Audrey Medlin (Captain), Forward; Nellie Beaver, Guard; Betty Lou Roberts, Forward; Cora Mae Ennis, Forward; Bonnie Poarch, Guard.  
*Second Row:* Rena Linn, Guard; Helen Garver, Guard; Mary Elizabeth Bostian, Forward; Jacqueline Russell, Forward; Helen Beaver, Forward; Hazel Correll, Guard; Imogene McCool, Guard; Miss Goodman, Coach; Maxine Alexander, Manager.

## GIRLS' BASKETBALL

THE VOYAGER, UNDER THE GUIDANCE of Admiral Goodman, is proud of its girls on the Basketball team because they kept the ship running smoothly throughout the season. They only lost two games and came out as champs in the Mid-Piedmont Tournament held at Barium Springs. Mary Elizabeth Bostian and Captain Audrey Medlin led the scoring with 277 and 140, respectively. The guards played bang up ball throughout the season.

	Opponents	Landis		Opponents	Landis
China Grove—(Here)	17	27	Kannapolis—(Here)	14	27
Barium Springs—(There)	24	24	Cooleemee—(There)	20	35
Mooresville—(Here)	19	50	Barium Springs—(Here)	23	34
Kannapolis—(Here)	22	37	Albemarle—(There)	27	24
China Grove—(There)	21	21	Granite Quarry—(There)	20	20
Granite Quarry—(Here)	12	14	Wincoff—(Here)	13	25
Mooresville—(There)	16	28	Wincoff—(There)	19	30







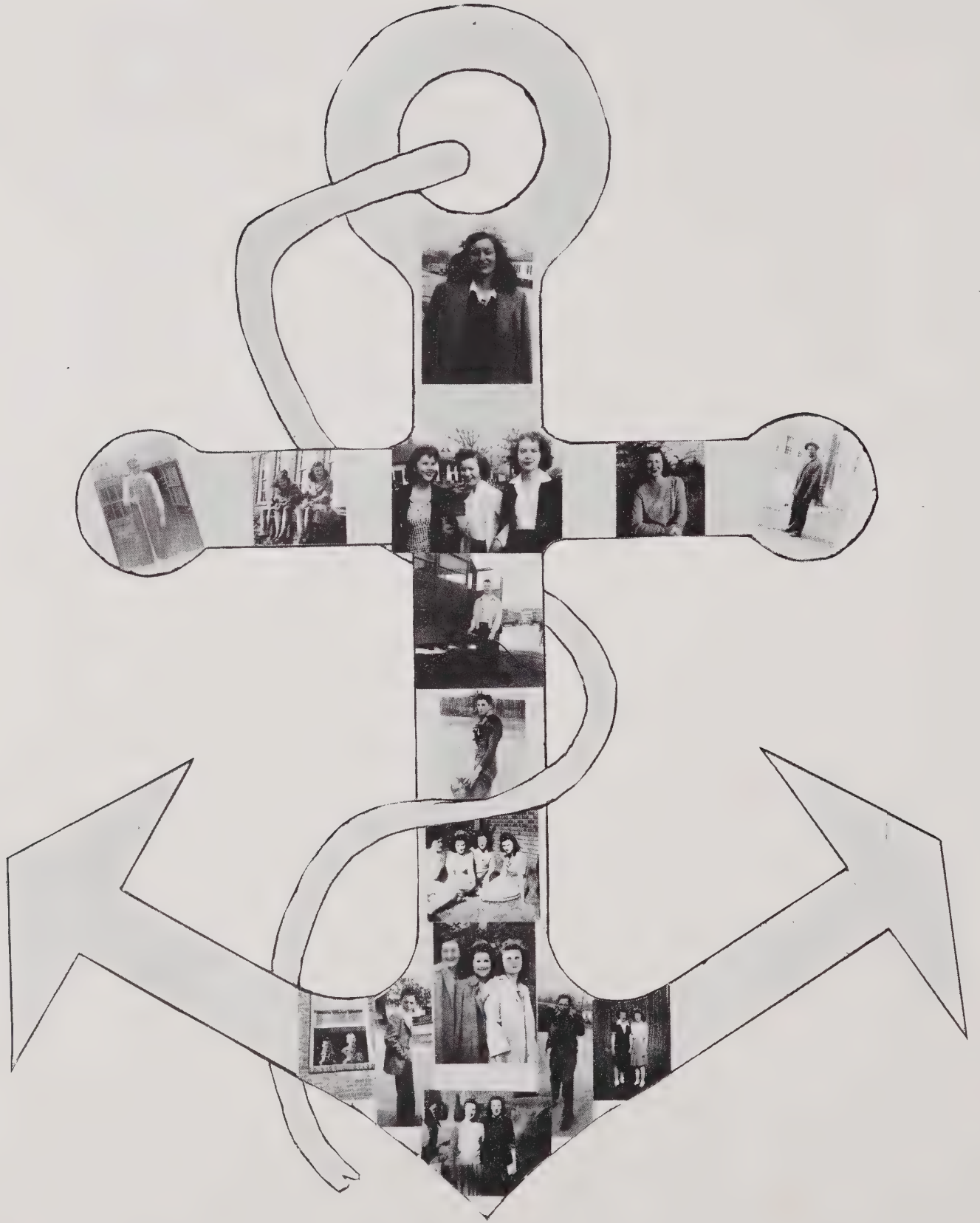
## BASEBALL

BASEBALL IS A GAME that has been played at Landis School for many years. Although our team has not been organized, there will be a good team to make the fight with other teams.

Our Seamen will play other teams that will play baseball in this county and other joining counties. Our team will be coached by Admiral T. F. Bostian and Admiral H. A. McCreary.

The annual goes to press before this season starts, so we wish our Voyaging Seamen the best of luck to succeed in their battle of baseball.







☆ *Working for Victory...*

Linn Mill Company

Corriher Mill Company

*Manufacturers of*  
HIGH GRADE YARNS



Landis, North Carolina





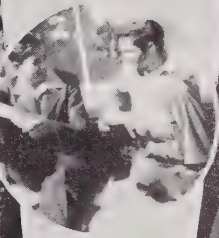
1. They'll do it better next time.  
2. Captain Corriher.  
3. Cross Brothers.  
4. Get set.

5. Like father, like son.  
6. Crip.  
7. Where is a receiver.  
8. Small America.

9. Waiting on the Coach.  
10. Parting Seniors.  
11. "Scatbacks."  
12. Practice.







1. Hit him again.  
 2. No class.  
 3. Three of a kind.  
 4. Down Lovers' Lane.

5. Who's your girl, "Fuzzy."  
 6. Gangs all here.  
 7. Ditto.  
 8. Hope it hits her.

9. Where's a girl.  
 10. Going our way.  
 11. Superman(?)  
 12. Our Pride and Joy.



# CAN YOU IMAGINE?

Cora Belle Rymer not smiling.  
Hattie Alley being insulted.  
Bonnie Poarch an old maid.  
Evelyn Sanders being conceited.  
Evelyn Petrea not combing her hair.  
Ida B. Wilhelm being quiet.  
Juanita Bostian expressing her opinions.  
Lucille Harris being talkative.  
Evelyn Brackett a genius.  
Rachel Sanders not talking about Phillip.  
Louise Sloop making a noise in class.  
Lois Campbell being dumb.  
Allie Mae Ervin wearing make up.  
Faye Propst being six feet tall.  
Veta Karriker annoying a teacher.  
Lavenia Eddleman finding her dream man.  
Martha Deal being skinny.  
Mary Sue Sechler not popping her gum.  
Margaret Troutman a tomboy.  
Helen Leazer without Althena.  
Pearl Holshouser with red hair.  
Althena Bostian a housewife.  
Lillian Linker without dimples.  
Sarah Weast not thinking of Marvin.  
Lucille Davis in love.  
Juanita Wright missing a day.  
Neavonne Carter mad with anyone.  
Margaret Shinn an ugly duckling.  
Mildred Swink being a brunette.  
Frances Ivey a quizz kid.  
Marie Lipe not giggling.

Louise Roseman being snooty.  
Audrey Medlin getting to class on time.  
Phyllis Owens not blushing.  
Bessie Overcash skipping class.  
Willie Strickland without her books.  
Marjorie Patterson being right-handed.  
Johnny Williams shaving.  
Leonard Linn with flat feet.  
Lamar Dorton not a teacher's pet.  
Harold Sechler in the Beta Club.  
Glenn Funderburke tall, dark, and grouchy.  
Myron Troutman a bachelor.  
Larry Beaver with a mustache.  
Hoyle Garver looking for a girl.  
Billie Beaver playing football.  
Gilreath Davis with a girl friend.  
Raymond Sutton in a sailor suit.  
L. L. Smith paying attention in class.  
Asbury Harkey a glamour boy.  
Jackie Smith walking on stilts.  
William P. Beaver getting his own lessons.  
Gene Corriher a circus strongman.  
Charlie Ray (Angel) Marshall with "wings."  
Ray Eddleman old and feeble.  
Ophelia Galloway making a zero.  
Frances Poteat being nose-y.  
Richard London not in English class(es).  
Hazel Correll with blond hair.  
Zelia Thomas not working Algebra.





**Merchants and  
Farmers Bank**

Member Federal Deposit  
Insurance Corporation

We Solicit Your Patronage

LANDIS                      NORTH CAROLINA

Compliments of

HARRISON'S  
STUDIO



— Phone 178-W —

KANNAPOLIS              NORTH CAROLINA

LINN-WRIGHT

*Funeral Home*



PHONE 9222

.. DAY or NIGHT ..

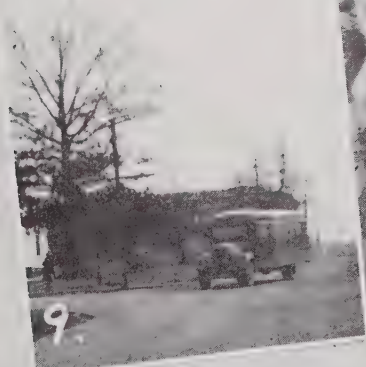
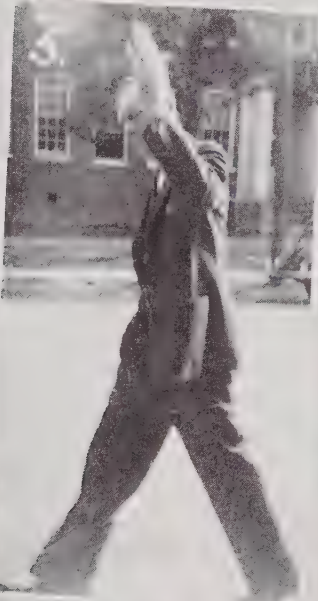
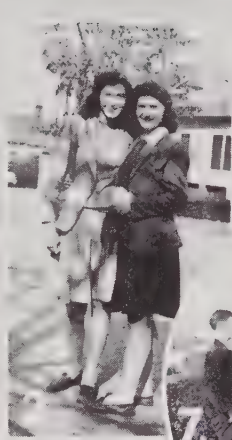
Compliments of

HILL & WRENN'S  
MEN SHOP



KANNAPOLIS              NORTH CAROLINA





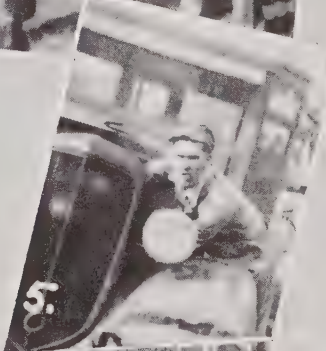
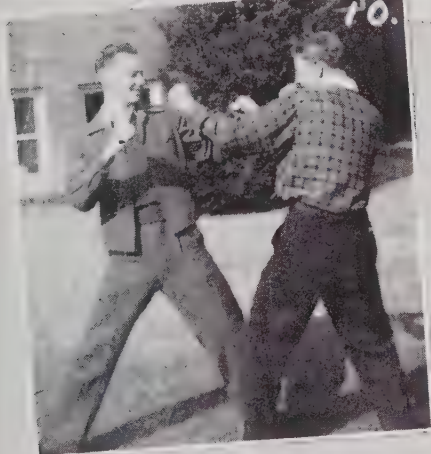
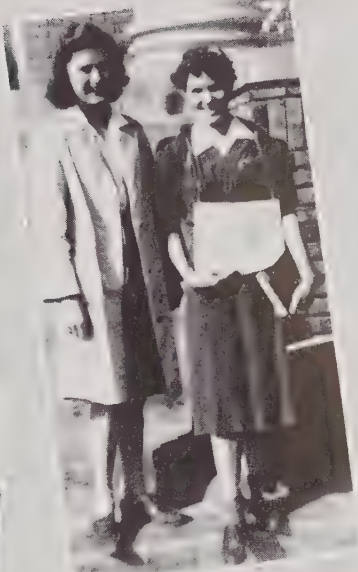
1. What a pose.  
 2. Looking for a man.  
 3. Enjoying a spare moment.  
 4. Some fun, eh kid.

5. Long arm of the law.  
 6. I wonder what they have done now?  
 7. Must be a fight.  
 8. Dreaming of Philip.

9. Here comes Raymond.  
 10. It must be love.  
 11. Last of the snow.  
 12. Lost their glamour.







1. Hit him, Lewis.  
 2. Sun worshipers.  
 3. Waiting for Myron.  
 4. Combination.

5. What's the trouble.  
 6. Socialist.  
 7. Smart Folks.  
 8. Noon.

9. Poor "Goon."  
 10. The Pless Boys.  
 11. Where's Dorton?  
 12. Watch the Birdie.





**F. L. SMITH DRUG CO.**  
The REXALL Store

Phone 9-39-49

KANNAPOLIS NORTH CAROLINA

**Redi-Cut Treadlite Linoleum**  
19½c Square Foot

**BIAS-LINN FURNITURE CO.**

Phone 19

LANDIS NORTH CAROLINA

Compliments of  
**Kannapolis Daily Independent**  
To  
Landis High School  
North Carolina's Fastest Growing  
Newspaper

Jewelry of Distinction  
"EASY CREDIT TERMS"  
Diamonds . . . Watches . . . Silverware  
**THE JEWEL SHOPPE, INC.**  
100 South Main Street  
KANNAPOLIS NORTH CAROLINA

**THE SMART SHOP**  
Exclusive But Not Expensive

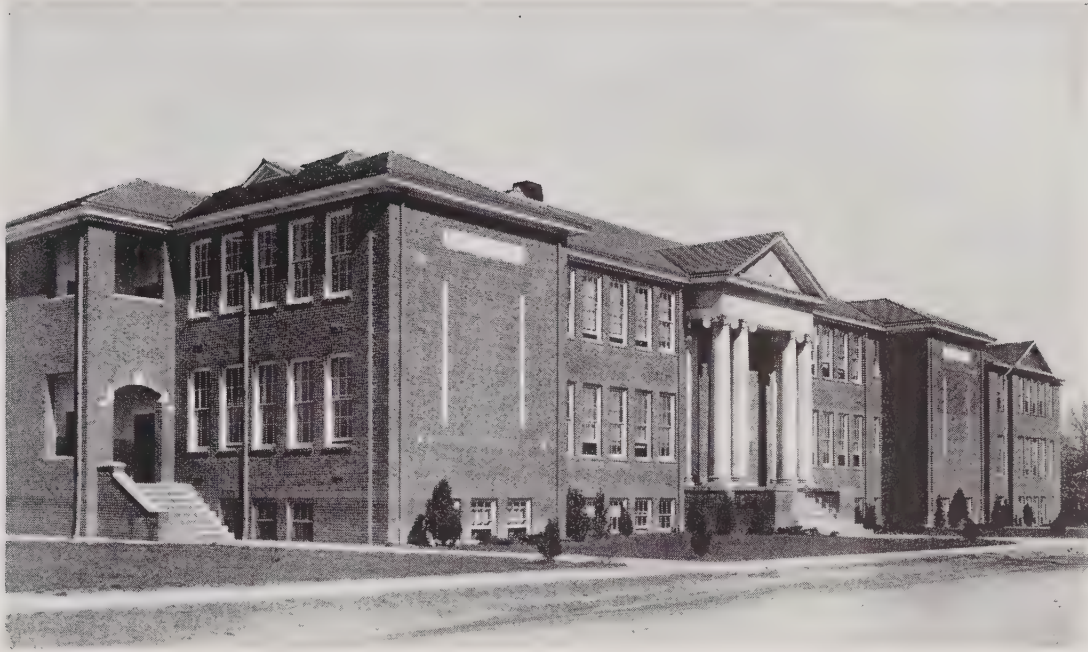
CONCORD KANNAPOLIS

Compliments of  
**TOWEL CITY TOWEL CO.**

KANNAPOLIS NORTH CAROLINA







**MORNING SIDE DAIRY**

... Grade "A" Raw Milk ...

Phone 2711

LANDIS

NORTH CAROLINA

**SNIPES SERVICE STATION**

... Washing and Greasing ...

Phone 42-L

LANDIS

NORTH CAROLINA

**QUERY-GOODMAN CO.**

SHOES and HOSIERY  
For The Entire Family

Phone 108—South Main St.

KANNAPOLIS

NORTH CAROLINA

**WILLEFORD'S JEWELERS**

KANNAPOLIS

NORTH CAROLINA

**Mann's Cut-Rate Drug Store**

(More for Less)

... Prescription Specialist ...

Phone 469

KANNAPOLIS

NORTH CAROLINA

**STERCHI'S**

"It Costs Less At Sterchi's To  
Furnish Your Home"

KANNAPOLIS

NORTH CAROLINA





**LINN-EDWARDS DRUG CO.**  
 SODA FOUNTAIN  
 . . . Prescriptions Filled . . .  
 Phone 50-R  
 LANDIS NORTH CAROLINA

**LANDIS ICE & FUEL CO.**  
 Fresh Meats . . . Groceries  
 Ice and Fuel  
 Phone 87

Cabarrus County's Leading Furniture  
 Store  
**MAXWELL BROS. & COLLINS**  
 Phone 232  
 South Main Street  
 KANNAPOLIS NORTH CAROLINA

Compliments of  
**THE KIDDIE SHOPPE**  
**RITCHIE SHOE SHOP**  
**SUMA'S SHOP**  
**MILLS' FLORIST**  
**F. W. WOOLWORTH & CO.**





**QUERY-GOODMAN CO.**

SHOES and HOSIERY  
For The Entire Family

Phone 108 — South Main St.

KANNAPOLIS NORTH CAROLINA

**MISS DEB'S**

Juniors' and Misses'  
Sports Wear

South Main Street

KANNAPOLIS NORTH CAROLINA

Compliments of

**MILLER'S CAFE**

Phone 60-W

LANDIS NORTH CAROLINA

Gold Seal Linoleum Rugs

**BIAS-LINN FURNITURE CO.**

Phone 19

LANDIS NORTH CAROLINA

**W. H. LEONARD, JR.**

The Store of Finest Jewelry At  
Lower Prices and on Easy Terms

WATCHES . . . JEWELRY

KANNAPOLIS NORTH CAROLINA

Buy Your Groceries At

**Wright-Wolfe Grocery Store**

Have Your Hair Styled At

**The Ideal Beauty Shoppe**

Phone 103-M MRS. FRANK WOLFE

**LINN BROTHERS**

"The Busy Store"

. . . Since 1901 . . .

LANDIS NORTH CAROLINA

Compliments of

**J. C. PENNEY & CO.**

KANNAPOLIS NORTH CAROLINA





*The* **LASSITER PRESS** *Inc.*

CHARLOTTE, NORTH CAROLINA

---

★  
*School  
Publications*

PRINTERS OF THE 1944 YELLOW JACKET



YELLOW JACKET · · · 1944



# AUTOGRAPHS

YELLOW JACKET · · · 1944



# AUTOGRAPHS



YELLOW JACKET · · · 1944

























































ROWAN PUBLIC LIBRARY  
SALISBURY, NC



3907815525