

The image shows a textured, yellowish-gold background with a wavy, wood-grain-like pattern. Two yellow envelopes are positioned diagonally, one behind the other, with their top flaps open. The envelopes are embossed with a simple line drawing of a yellow jacket. In the lower right quadrant, the words "Yellow Jacket" are written in a large, elegant, cursive script, also embossed into the background.

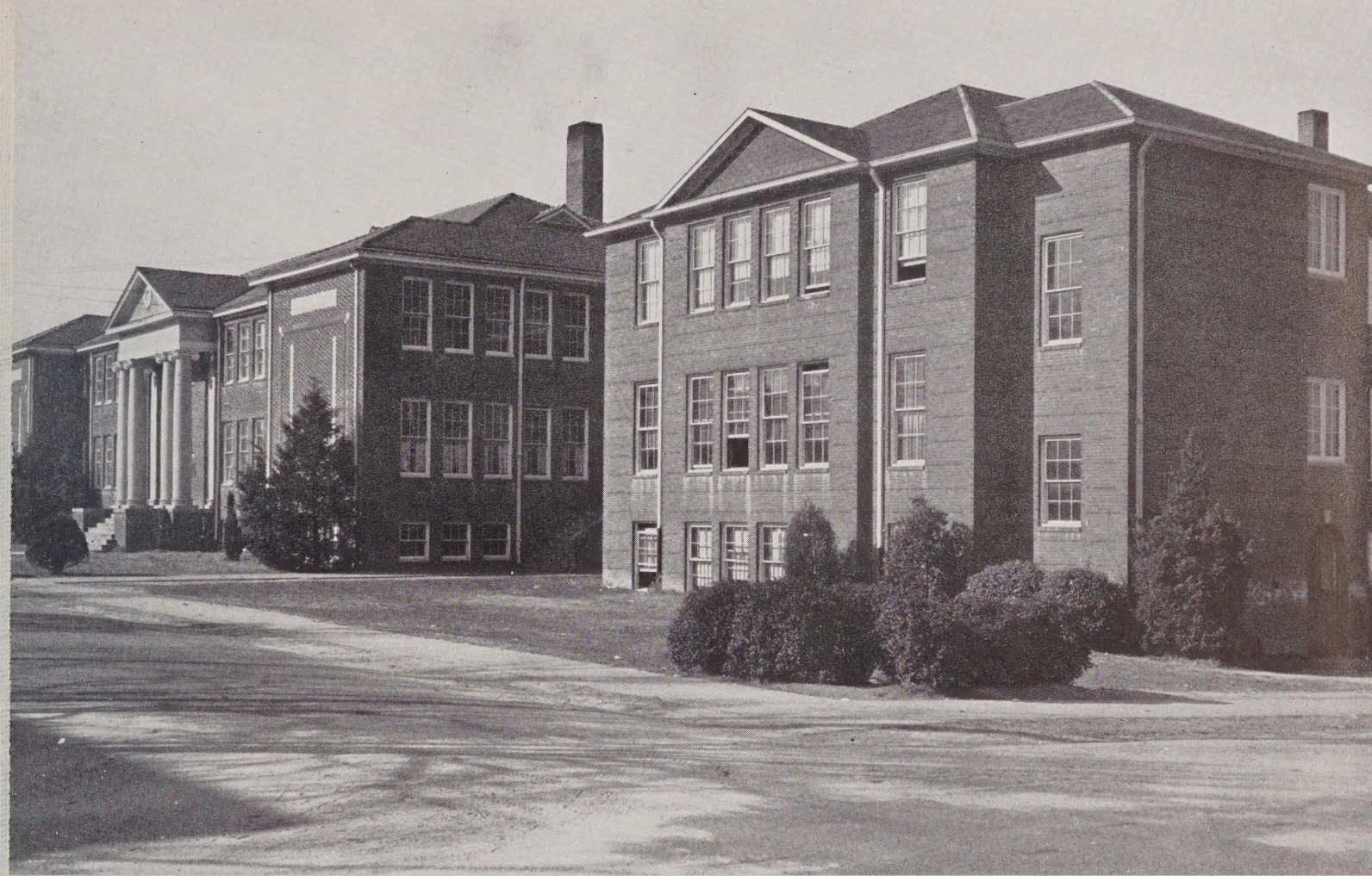
Yellow Jacket

Office



Digitized by the Internet Archive
in 2021 with funding from
North Carolina Digital Heritage Center

<https://archive.org/details/yellowjacket194700land>



T H E
Y J
E A
L C
L K
O E
W T
1 9 4 7

PUBLISHED BY THE SENIOR CLASS
of
LANDIS HIGH SCHOOL
Landis, N. C.

VIRGINIA LEE ALLMAN
Editor-in-Chief

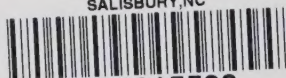
FRANCES E. BARRINGER
Business Manager

MISS LILLIAN BARRIER
Advisor

FOREWORD

All through the years we have been made happy by the various events in life. For many of us, the future will hold many more bright moments; for others, the sun will not shine so often. Whatever our lot may be, surely the memories of our school days will linger with us and with every cloud bring a silver lining. "We have crossed the bay; the ocean lies before us." Truly we have crossed the bay during our school years; nevertheless, the ocean of life lies before us. However deep the water or rough the waves, let us strive to reach the shore of success and eternal happiness.

ROWAN PUBLIC LIBRARY
SALISBURY, NC



3907815528



DEDICATION

For several years now, Mr. McCreary, "Mac" when he isn't listening, has spent his time, efforts, and especially his patience here in the high school. Much has been accomplished since he first joined the Landis High faculty.

His untiring efforts as principal, teacher, coach, and friend have added much to the enjoyment and the success of our high school career.

In due appreciation of all these, we, the Class of 1947, do dedicate this edition of the *Yellow Jacket* to Mr. H. A. McCreary.



MR. T. FRANK BOSTIAN
Superintending Principal Landis District



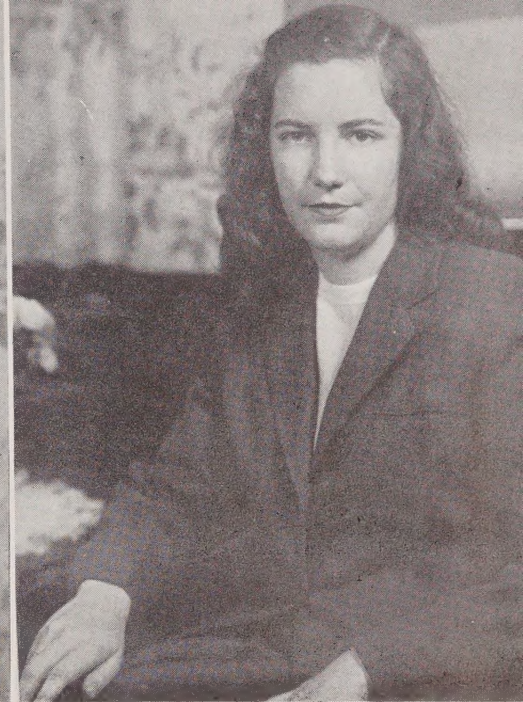
MR. H. A. McCREARY
Principal Landis High School



MRS. RALPH LINN
12th Grade



MISS LILLIAN BARRIER
12th Grade



MISS ELIZABETH WALLACE
11th Grade

FACULTY

MRS. H. S. LEAFE
11th Grade



MISS MARIE BOLICK
10th Grade



MISS LaMONNA GATTIS
10th Grade





MISS PAULINE CORRIHER
Home Economics



MR. S. P. TEAGUE
Agriculture



MISS MARY LOUISE MOORE
Music

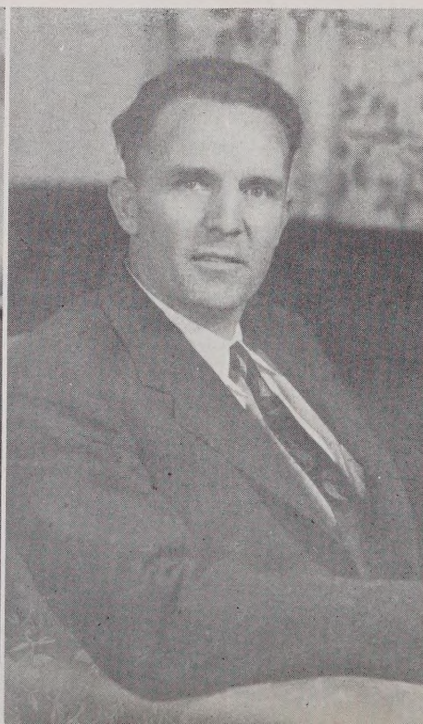
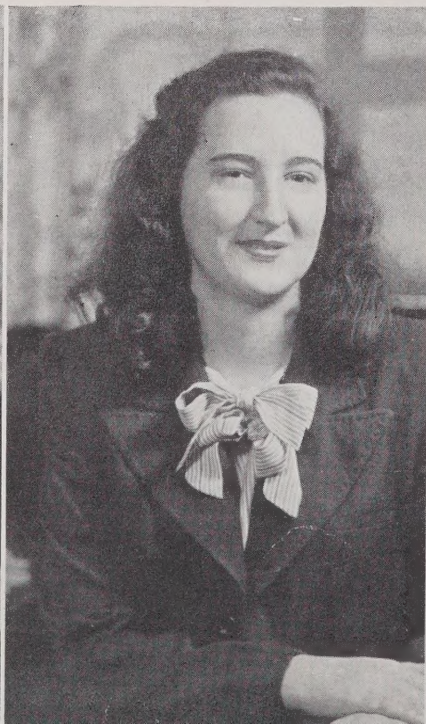
FACULTY

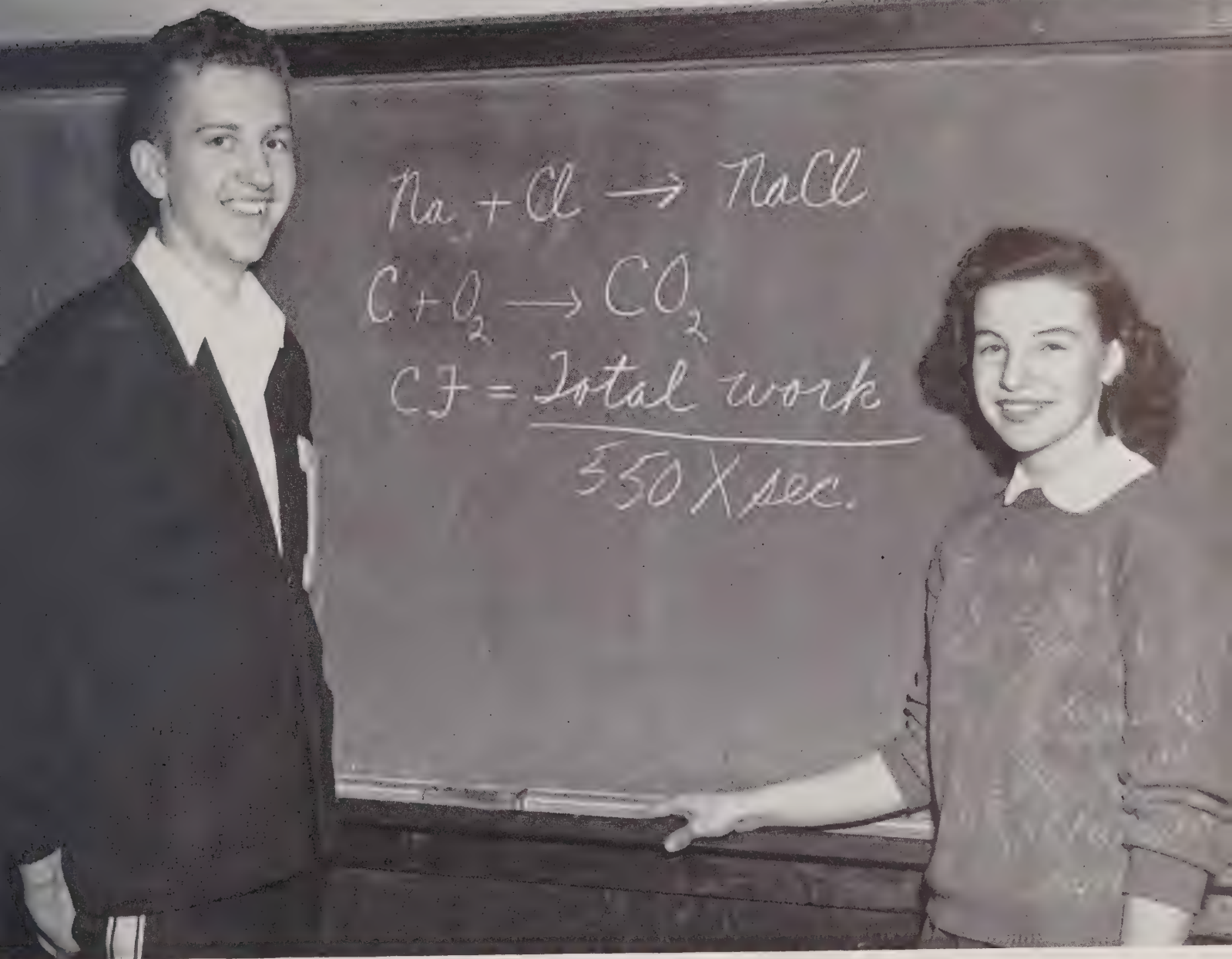
MRS. JOHN RITCHIE
9th Grade

MISS PATSY McCOMBS
9th Grade

MR. A. C. SMITH
9th Grade

MISS DORIS LACKEY
9th Grade





CLASSES



CLASS OF '47

OFFICERS

<i>President</i>	Dearl Correll
<i>Vice-President</i>	Ray Karriker
<i>Secretary</i>	Junior Blackwelder
<i>Treasurer</i>	Beatrice Page

(Not in picture)

Advisors Miss Lillian Barrier, Mrs. Ralph Linn

Motto: "We have crossed the bay; the ocean lies before us."

Colors: Yellow and White • Flower: Yellow Rose



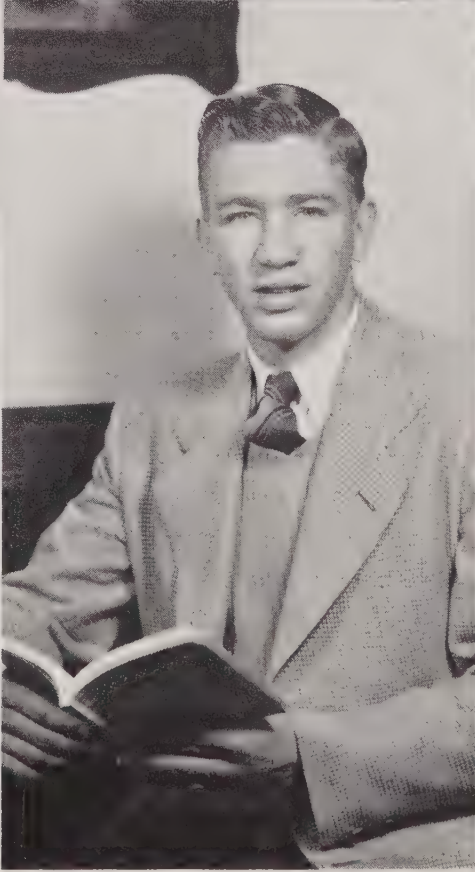
MASCOTS

Carol Parks

Daughter of Mr. and Mrs. Bennet Parks

J. D. Ramseur, Jr.

Son of Mr. and Mrs. J. D. Ramseur



Virginia Lee Allman

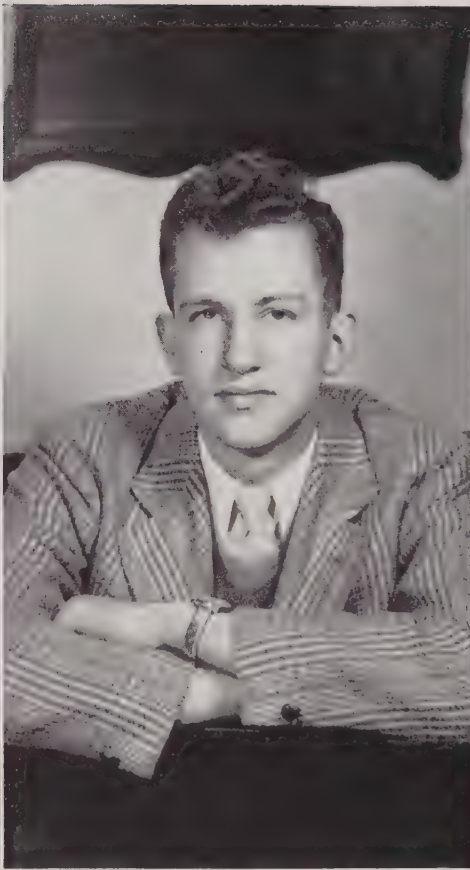
Frances E. Barringer

Sibyl Beaver

Wayne Beaver

Herman Billings

David Blackwelder, Jr.



Ethel Bolen

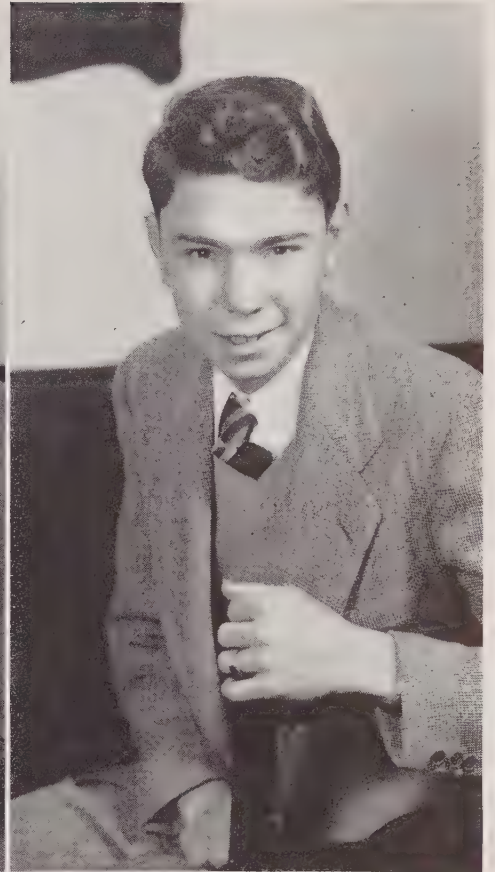
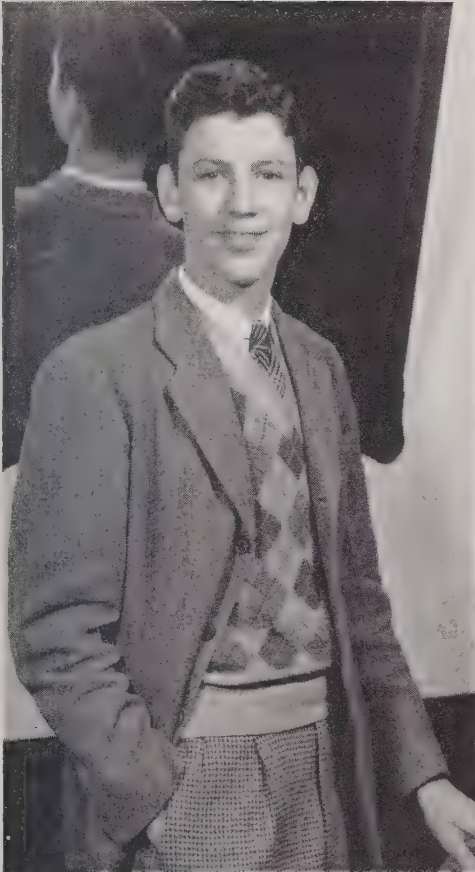
Tommy Bostian

Margaret Campbell

Wade Carter

Betty Jo Chastain

Dearl Correll



Arthur Davis

Lala Deal

Foy Deal

Mable Frances Deal

Helen Eddleman

Myrtle Eddleman



Coit Ennis

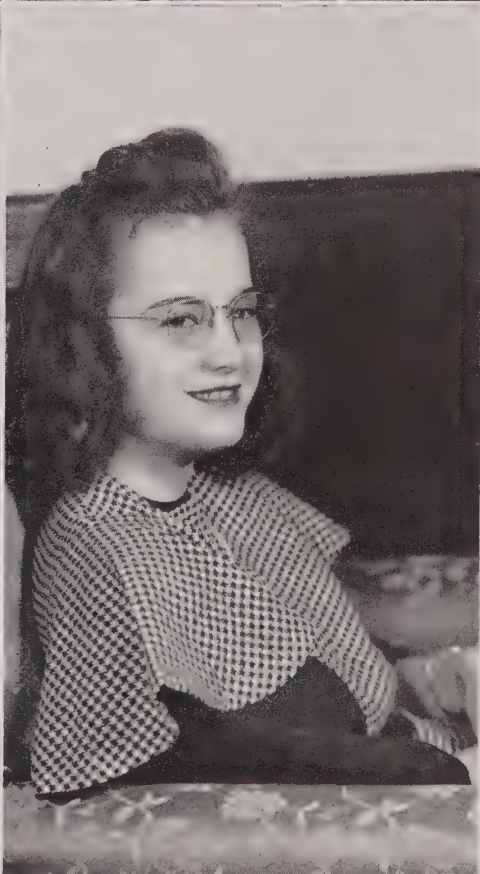
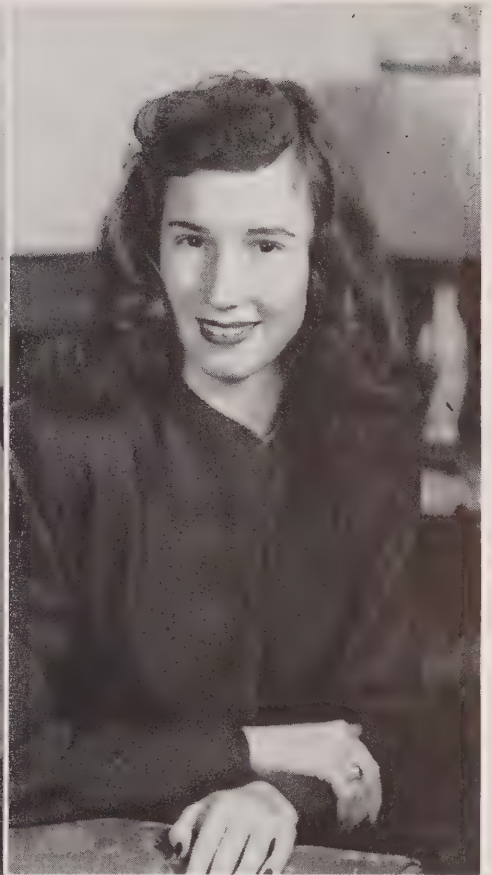
Bonnie Edwards

Ruth Edwards

Betty Follette

Mary Frances Foutz

Clyde Goodman



Ola Mae Goodman

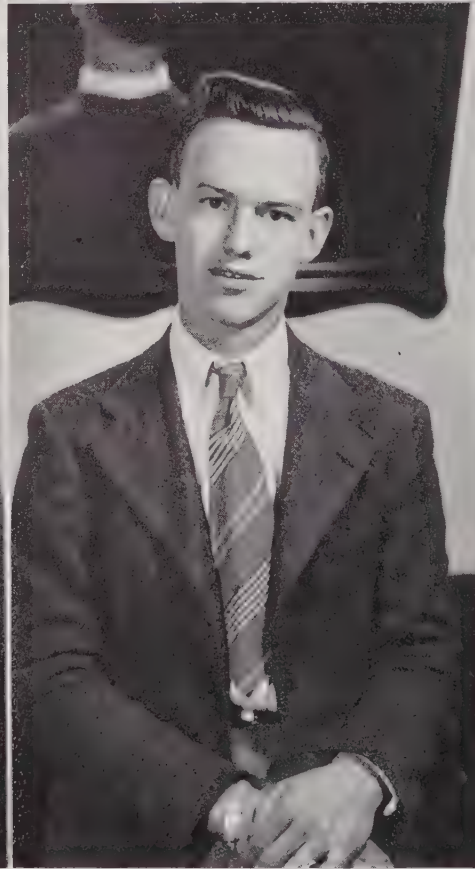
Doris Heglar

Doris Helms

Louniel Jordon

Audrey Karriker

Cecil Karriker



Ray Karriker

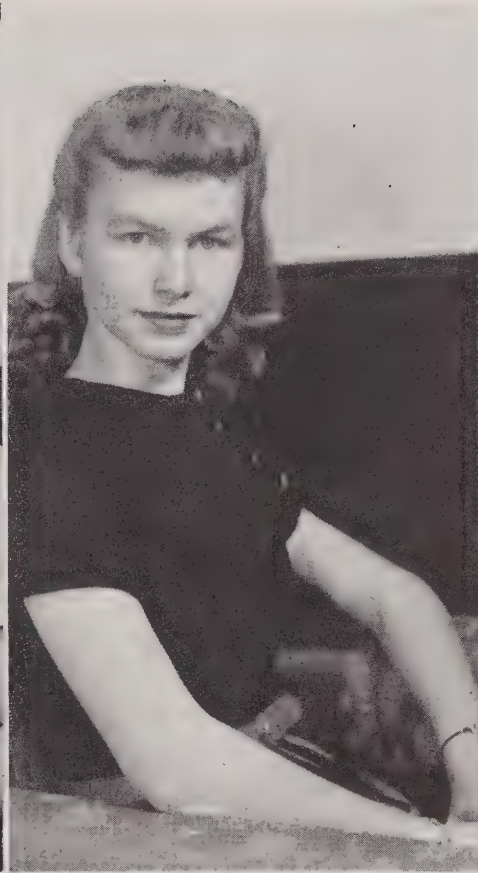
Jerline Kelly

Paul Kennerly

Peggy Leafe

Jack Leazer

Jerline Morgan



Helen Morrison

Helen Murdoch

Charles McCarn

Henrietta McDaniel

Jean McLain

Lewis Overcash, Jr.



Beatrice Page

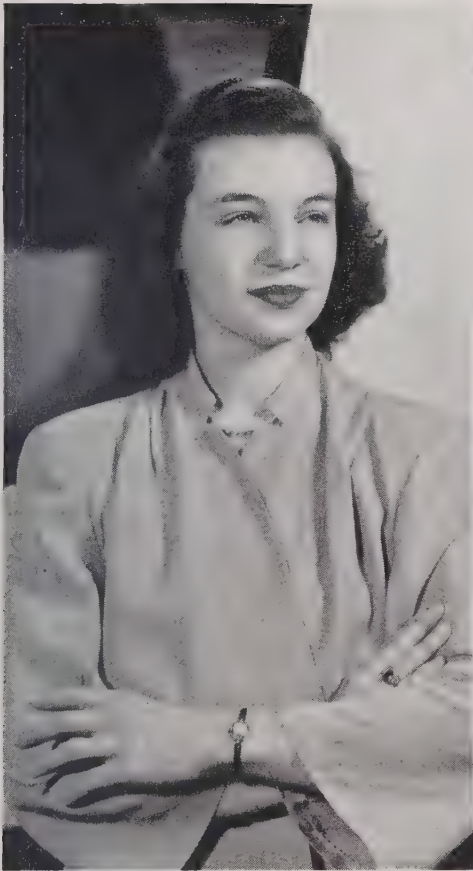
Harold Parks

Claude Patterson

Frances Pless

George Pless

Eloise Reavis



Katheryn Roberts

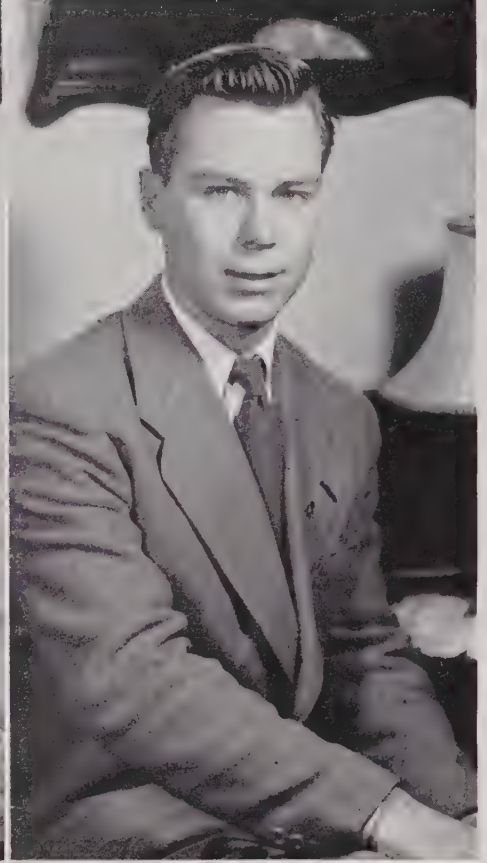
John Rogers

Lollie Schenck

Kathryn Sloop

Paul M. Smith

Hubert Smith



Paul S. Smith

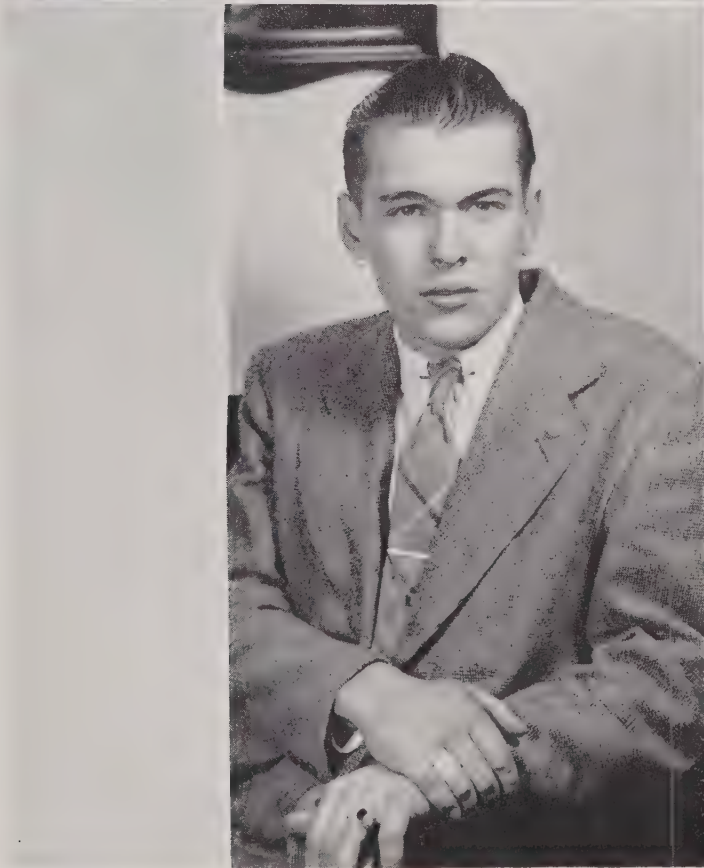
Ray Smith

Billy Smithdeal

Lucille Swicegood

Tommy Taylor

Mary Troutman



Kathleen Weaver

Patsy Whitaker

Barnett Wilkinson

Franklin Wise

Frances Hodge

SENIOR DIRECTORY

VIRGINIA LEE ALLMAN

Band (1, 2); Physical Ed Club (1); Dramatics Club (2); Glee Club (3); Monogram Club (3, 4); Vice-President (3); Beta Club (3, 4); Junior Marshal; Cheerleader (2, 3, 4); Chief (3); Basketball (2, 3, 4); *Spectator* Staff (3, 4); Editor-in-Chief (3); Business Manager (4); *Yellow Jacket* Staff (1, 2, 3, 4); Circulation Manager (2); Business Manager (3); Editor-in-Chief (4); Junior Play; Athletic Store (3, 4); Assistant Manager (3); Manager (4); Senior Superlatives, Most Athletic, Biggest Flirt, Most Talkative; Ballroom Dancing Club (3).

FRANCES E. BARRINGER

Physical Education Club (1); Beta Club (2, 3, 4); Treasurer (3); President (4); Girls Chorus (2); *Yellow Jacket* Staff (3, 4); Business Manager (4); *Spectator* Staff (4); Glee Club (3, 4); Cheerleader (3); Class Officer (3); Treasurer (3); Senior Superlatives: Friendliest, Best All Around; Junior Play; Athletic Store (4); Assistant Manager; Monogram Club (4).

SIBYL BEAVER

Ballroom Dancing Club (3); Beta Club (2, 3, 4); Vice-President (3); Art Club (1); Library Club (2); Secretary; Beta Club Play (2); Glee Club (3, 4); Treasurer (4); *Yellow Jacket* Staff (2, 3, 4); Advertising Manager (4); *Spectator* Staff (3, 4); Circulation Manager (4); Band (1, 2, 3, 4); Junior Play; Class President (3); Cheerleader (3); Senior Superlative: Wittiest (4); Class Historian (4); Basketball (4); Monogram Club (4).

WAYNE BEAVER

Monogram Club (1, 2, 3, 4), President; Library Club (2, 3); Sports Club (1); Beta Club (3, 4); Football (2, 3, 4); Basketball (2, 3, 4); Dancing Club (3); *Yellow Jacket* Staff (3, 4); *Spectator* Staff (3, 4), Editor; Junior Play; Baseball (2); Senior Superlatives: Most Popular, Biggest Flirt, Best All Around.

HERMAN BILLINGS

Dramatics Club (1); Monogram Club (1, 2, 4); Dancing Club (2); Basketball (1, 2, 4); Football (1, 2); Baseball (2); Library Club (2); Journalism Club (4); *Yellow Jacket* Staff (4).

JUNIOR BLACKWELDER

Football (1, 2, 3, 4); Baseball (1, 2, 3, 4); Basketball (3, 4); Boy's Sport Club (1, 2, 3); Library Club (4); Monogram Club (2, 3, 4); Class Officers (4), Secretary; *Spectator* Staff (4); Dancing Club (3); Junior Play (3), Stage Manager; Senior Superlatives: Best Dressed, Best Sport.

ETHEL MAE BOLEN

Cannon High (1); Home Economics Club (2, 3).

TOMMY BOSTIAN

Football (1, 2, 3, 4); Basketball (1, 2, 3, 4); Baseball (1, 2, 3, 4); *Yellow Jacket* Staff (1, 3, 4); Band (1, 2, 3, 4); *Spectator* Staff (2, 3, 4); Monogram Club (1, 2, 3, 4); Beta Club (3, 4); Art Club (1); Dancing Club (2, 3).

MARGARET CAMPBELL

Sports Club (1), Secretary; Home Economics Club (2, 3, 4); Secretary (2, 4); Beta Club (2, 3, 4); Glee Club (1, 2, 3); *Spectator* Staff (3); *Yellow Jacket* Staff (3).

WADE CARTER

Agriculture (1, 2, 3, 4); Treasurer (1); Library Club (1, 2); Loafers Club (3); Public Speaking Club (4), Vice-President.

BETTY JO CHASTAIN

Sports Club (1); Dramatics Club (2); Sub-Deb (3); Senior Play, Production Staff (3).

SENIOR DIRECTORY

DEARL CORRELL

President (1, 4); Monogram Club (2); Glee Club (1, 2, 3); Football (1, 2); Basketball (2); *Yellow Jacket* Staff (1, 2, 4); Wild Life Club (1); Airplane Club (2); Senior Superlatives: Most Intelligent and Most Likely to Succeed; Public Speaking Club (4).

MARY MARGARET CORRELL

Physical Education Club (1); Art Club (2, 3); Library Club (3, 4); Dancing Club (3).

ARTHUR DAVIS

China Grove High School (1, 2); Glee Club (3); Nature Club (3); Journalism Club (4); Class Poet.

LALA DEAL

Sports Club (1); Art Club (2); Home Economics Club (3, 4).

FOY DEAL

Band (1, 2, 3, 4), Reporter (3), Secretary (4); *Yellow Jacket* Staff (3), Club Editor; *Spectator* Staff (4); Boys' Sport Club (1, 3); Male Chorus (2); Music Club (4); Glee Club (3); Senior Superlative: Friendliest; Marshal; Junior Play (3); Dancing Club (3); Monogram Club (4).

MABLE FRANCES DEAL

Sports Club (1, 2); Home Economics Club (2, 3, 4), President (3); Band (1); *Spectator* Staff (4).

HELEN EDDLEMAN

Home Economics Club (1, 2, 3, 4); Art Club (1); Glee Club (1, 4).

MYRTLE EDDLEMAN

Co-Ed Club (1); Baste and Taste Club (2, 3, 4).

BONNIE LEE EDWARDS

Hiking Club (1); Girls' Physical Education Club (2); Home Economics Club (2, 3); *Spectator* Staff (4); Beta Club (4).

RUTH EDWARDS

Hiking Club (1); Sports Club (2); Home Economics Club (2, 3, 4).

COIT ENNIS

Sports Club (1, 2, 3); Journalism Club (4); Dancing Club (2).

BETTY FOLLETTE

Camp Lejeune High School (2); *Spectator* Staff (3, 4); Journalism Club (4); Dramatics Club (3); Dancing Club (3); Public Speaking Club (1).

MARY FRANCES FOUTZ

Sports Club (1); Library Assistant Club (2, 3, 4).

CLYDE GOODMAN

F. F. A. Club (1, 2, 3, 4), Reporter (2); Wild Life Club (2); Nature Club (3); Library Club (1); Journalism Club (4); *Spectator* Staff (2); Baseball (4).

OLA MAE GOODMAN

Physical Education Club (1); Girls' Chorus (2); Home Economics Club (2, 3); Glee Club (2, 4); Beta Club (2, 3, 4); *Spectator* Staff (4); Class Historian.

SENIOR DIRECTORY

DORIS HEGLAR

Art Club (1); *Spectator* Staff (2, 3, 4); Library Assistants Club (2, 3); Cheerleader (3); *Yellow Jacket* Staff (3, 4), Assistant Advertising Manager (4); Glee Club (3, 4), Vice-President (4); Junior Play (3); Journalism Club (4), Vice-President; Dancing Club (3); Monogram Club (4).

DORIS HELMS

Home Economics Club (2, 3, 4); Sports Club (1, 2).

LOUNEIL JORDON

Art Club (1); Dramatics Club (2); Nature Club (3); Journalism Club (4).

AUDREY KARRIKER

Sports Club (1); Glee Club (1, 2, 3), Treasurer (3); Home Economics Club (2, 3, 4), Treasurer (2), Vice-President (4).

CECIL KARRIKER

Sports Club (1); Male Chorus Club (2); Journalism Club (4); F. F. A. (1, 2, 3, 4), Secretary (3, 4); Library Club (3).

RAY PRESTON KARRIKER

Glee Club (1, 3); Boys' Sports Club (1), Secretary (2); Male Chorus (2), Vice-President (2); *Spectator* Staff, Associate Editor (3); Nature Club, President (3), Vice-President (4); Library Club (4); F. F. A. (1, 2, 3, 4), President (3, 4).

JERLINE KELLY

Beta Club (2, 3, 4); Beta Club Play; *Spectator* Staff (2, 3, 4); *Yellow Jacket* Staff (2, 3, 4); Art Club (1, 2); Glee Club (4), Secretary (4); Senior Superlatives: Best Looking and Most Popular.

PAUL KENNERLY

F. F. A. (1, 2, 3, 4); Male Chorus (2); Journalism Club (4); Sports Club (3); Library Club (1).

PEGGY LEAFE

Badin High School (1); Library Club (2); Dancing Club (2); Basketball Manager (2); *Yellow Jacket* Staff (2); Junior Play; Band (2, 3); Journalism Club (4).

GLENN LEAZER, JR.

F. F. A. (1, 2, 3, 4); Male Chorus (2); Library Club (3); Sports Club (1); Journalism Club (4).

CHARLES McCARN

Wild Life Club (1); F. F. A. (1, 2, 3, 4); Nature Club (3); Sports Club (2); Journalism Club (4); Senior Superlative: Wittiest.

CLIFFORD McCORKLE

Sports Club (1); F. F. A. (1, 2, 3, 4); Nature Club (2, 3); Public Speaking Club (4).

JERLINE MORGAN

Southern High School, Baltimore, Md. (1); Literature Club (2); Library Club (3, 4).

HELEN MORRISON

Sports Club (1, 2); Dramatics Club (3); Journalism Club (4).

HELEN MURDOCH

Hiking Club (1); Girls' Physical Education Club (2), Secretary (2); Home Economics Club (2); Beta Club (2, 3, 4), Vice-President (4); Marshal for Junior Play (4); *Spectator* Staff; Class Prophet.

SENIOR DIRECTORY

HAROLD PARKS

F. F. A. (1, 2, 3, 4); Male Chorus (2); Library Club (3); Sports Club (1).

BEATRICE PAGE

Physical Education Club (1); Square Circle Club (2); Beta Club (2, 3, 4); Dancing Club (3); *Yellow Jacket* Staff (2, 3); Vice-President (1); Treasurer (2); Secretary (3); Treasurer (4); Junior Marshal; Manager, Student's Store (3).

CLAUDE PATTERSON

F. F. A. (1, 2, 3, 4); Library Club (2, 4); Sports Club (1); Debators Club (3).

FRANCES PLESS

Girls' Physical Education Club (1); Vice-President (2); Library Assistants Club (2, 3); Secretary (3); Ballroom Dancing Club (3); Glee Club (3, 4), President (4); Journalism Club (4), President; *Yellow Jacket* Staff (4); *Spectator* Staff (4).

GEORGE PLESS

Ballroom Dancing Club (3); Home Economics Club (1); Male Chorus (2); Library Club (2); Music Club (4); Baseball (1); Basketball (1, 2, 3, 4); Football (3, 4); Band (1, 2, 3, 4); Treasurer (1), Vice-President (2, 3), Treasurer (4).

ELOISE REAVIS

Norfolk High School (1, 2); Library Club (3); Ballroom Dancing Club (3); Marshal (3); Journalism Club, Reporter (4); *Spectator* Staff (4).

KATHERYN ROBERTS

Art Club (1); Girls' Chorus (2); Beta Club (2, 3, 4), Treasurer (4); Basketball (2, 3, 4); *Spectator* Staff (3, 4); Junior Play; Monogram Club (4); *Yellow Jacket* Staff (4), Circulation Manager; Senior Superlative: Best Sport; Glee Club (4); Class Prophet; Junior Marshal.

JOHN ROGERS

F. F. A. (1, 2, 3, 4); Sports Club (1); Nature Club (3); Wild Life Club (2); Library Club (4).

LOLLIE SCHENCK

Sports Club (1); Library Club (2); Nature Study Club (3); Journalism Club (4); Junior Play, Production Staff.

KATHERYN SLOOP

Sports Club (1); Beta Club (2, 3, 4), President (3); Class President (2); Glee Club (1, 2, 3), Secretary (3), Treasurer (2); Home Economics Club (2, 3, 4), Vice-President (2), President (4), State Officer (3); *Spectator* Staff (3), Circulation Manager; *Yellow Jacket* Staff (3, 4), Associate Editor (4); Senior Superlatives: Most Intelligent, Most Likely to Succeed.

PAUL M. SMITH

F. F. A. (1, 2, 3, 4); Male Chorus (2); Library Club (3); Sports Club (1).

PAUL S. SMITH

Art Club (1, 2); Nature Study Club (3); Public Speaking Club (4).

SENIOR DIRECTORY

HUBERT SMITH

Library Club (1); Beta Club (2, 3, 4).

BILLY SMITHDEAL

Library Club (1); First Aid Club, Vice-President (2); Beta Club (2, 3, 4).

LUCILLE SWICEGOOD

Physical Education Club (1); Dramatics Club (3); Basketball (3, 4); Monogram Club (4); Class Testator.

MARY TROUTMAN

Sports Club (1); Dramatics Club (2); Library Club (3); Journalism Club (4).

KATHLEEN WEAVER

Sports Club (1); Home Economics Club (2, 3, 4); Art Club (2); Junior Play, Production Staff; Glee Club (1, 2).

PATSY WHITAKER

Glee Club (1, 2, 3, 4); Home Economics Club (1, 2, 3); Girls' Chorus (2); Junior Play; Dancing Club (3); Monogram Club (4); Basketball (3); Senior Superlative: Best Dressed; *Spectator Staff* (4); *Yellow Jacket Staff* (4); Journalism Club (4).

FRANKLIN WISE

F. F. A. (1, 2, 3, 4), Treasurer (4); Sports Club (1); Library Club (2, 3); Public Speaking Club (4).





WAY BACK----WHEN??

CLASS PROPHECY

Mary Frances Foutz is now District Manager of an F. W. Woolworth store in New York City.

Frances Hodge is now modeling hair-do's with her beautiful red hair for a motion picture concern.

Bonnie Edwards is now happily married to Floyd.

Audrey Karriker is now a woman politician campaigning for the office of Secretary of Labor.

Margaret Campbell and Jim have spoken their vows and are now very successful on their chicken farm.

Peggy Leafe is now President of a Junior Woman's Club where she can talk continually.

Katheryn Sloop is now sailing the high seas trying to keep up with her sailor husband.

Helen Eddleman now holds a high position in the office of Cannon Mills.

Lala Deal, Lollie Schenck, and Kathleen Weaver are partners in a prospering ladies' ready-to-wear shop in the City of Landis.

Doris Helms and Mable Frances Deal have finally completed their missions by getting their men.

Jerline Morgan is now a famous star on the Carolina Hayride and Hit Parade.

Mary Margaret Correll has gone "Big League" now trying to land one of those Boston Braves.

Doris Heglar is now singing soprano for the Metropolitan Opera Company in New York.

Frances Barringer now has a job laughing at Herman Billings jokes on his own radio show.

Frances Pless is now the main attraction in Carnegie Hall.

Jerry Kelly is still carrying on her art career sketching fashions for "*Glamour*" Magazine.

Ethel Bolen is now the sole owner of a 5 & 10 cent store in a nearby town.

Ola Mae Goodman is using her beautiful eyes to demonstrate a new brand of Mascara.

Patsy Whitaker is now raising little Daughters after a happy marriage to Raymond.

Lucille Swicegood is now the one and only lady auctioneer working for the Lucky Strike Cigarette Co.

Virginia Allman is now a famous basketball coach whose team has been champion for three consecutive seasons.

Beatrice Page is now a most reliable owner of a chain of theaters on Broadway.

Eloise Reavis has now captured the heart of her one and only.

Betty Follette is now the official taster in a large pie factory where she eats to her heart's content.

Sibyl Beaver is now advertising hair dyes and tints for a motion picture company.

Betty Chastain is now using her gift of "gab" finding boy friends and husbands for the unfortunate of the weaker sex.

Helen Murdoch has now completed her second great novel, entitled "The Ideal Man."

Helen Morrison and Mary Troutman are very successful with their "Advice to the Lovelorn" column in the "*Landis Tatler*."

Katheryn Roberts is now a favorite housewife living in the City of Landis, her husband being the manager of the "Landis Radio Station."

Louneil Jordon and Henrietta McDaniels are now English teachers at the famous Landis High School. Thanks to Mrs. Linn's careful teaching and patience, they passed their work.

Ruth Edwards is an employee at Cannon Mills where she will soon retire to be with her husband.

Jean McLain is now a worker in a little dress shop in Kannapolis. Her instructions at F. W. Woolworth's were very much appreciated since now she is manager of this "concern."

Myrtle Eddleman is a seamstress for a famous designer in New York.

Wayne Beaver is on a world famous tour scouting for beautiful women softball players.

Junior Blackwelder has now taken over where Van Johnson left off and is very successful at it, too.

Tommy Bostian has lost all his bashfulness and is now one of the world's most ardent lovers.

Wade Carter is now the well-known inventor of the world-famous "spud digger."

Dearl Correll has now opened up a large independent radio network, its center being Landis.

Arthur Davis has now received his master's degree in French and is teaching at the University of Landis.

Foy Deal is now the owner of a large jewelry store and has as his associate none other than Hoyle Sullivan.

Coit Ennis has finally made a last minute attempt and landed a one and only.

Clyde Goodman has now earned numerous safety medals as a driver for the Greyhound Bus Co.

Cecil Karriker's impartial attitude has gained him the position as judge in criminal court.

Ray Karriker is now a leader in one of the country's largest political parties.

Lewis Overcash, Jr., is now the main attraction in a world famous circus as the circus fat-man.

George Lee Pless has now taken the late Bob Hope's place as the country's best-known comedian.

Billy Kimball, after completing his engineering course at Harvard University, has just finished the building of the second bridge across San Francisco Bay.

Paul Kennerly has opened a service station on the Mooresville-Landis Super Hiway for the introduction of the new fuel, atomtane, for the new space ships which are being built by Barnette Wilkerson in the metropolis of Mooresville.

Charles McCarn and Jack Leazer are joint owners of a large chicken farm which produce broilers for the New York market.

Ray Smith has made a mad dash for the altar, taking with him one of our leading teachers.

Franklin Wise is now teaching Agriculture at Bostian High School.

John Rodgers is raising cattle in Texas, on his King ranch, for the Chicago meat market.

Clifford McCorkle is a bus driver, his weekly run being from New York to Miami, with the new transport company organized by Paul M. Smith and Hubert Smith.

Tommy Taylor has just taken over as manager of the Coble Dairy plant here in Landis.

Billy Smithdeal and Paul S. Smith are pilots for the Pan American Air Lines on their route from New York to Paris.

Claude Patterson is now superintendent of plant No. 6 of Corriher Mills in Landis.

Class Prophets—

Helen Murdoch

Ray Karriker

Katheryn Roberts

LAST WILL AND TESTAMENT

I, Mary Frances Foutz, do will my sweet and friendly ways to Annie Sue Blackwelder.

I, Wayne Beaver, do will my winning personality and my love for women to David Cavin.

I, Frances Hodge, do will my long, red hair to Billy Doris Murphy.

I, Herman Billings, do will my ability to be a pest to Hoyt Ruthledge.

I, Betty Jo Chastain, do will my ability to fall in love to Peggy Eller.

I, Franklin Wise, do will my ability to poke in other people's business to Pauline Overcash.

I, Helen Murdoch, do will my studious ways and winning smile to Bobby Cross.

I, Barnett Wilkinson, do will my love for the Beta Club to Billy Foutz.

I, Bonnie Lee Edwards, do will my ability to keep a steady romance to Doris Karriker.

I, Tommy Taylor, do will my manly physique to J. B. Heglar.

I, Audrey Karriker, do will my talkative ways and big mouth to Sue Corriher.

I, Margaret Campbell, do will my unusually quiet ways and my steady romance to Tommy Linn.

I, Peggy Leafe, do will my "gift of gab" to Annie Smith.

I, Kathryn Sloop, do will my ability to make good grades and my love for the Navy to Rachel Correll.

I, Junior Blackwelder, do will my good looks and quiet ways to Marcus Efir.

I, Tommy Bostian, do will my bashfulness in public and ability to get down to business in private to Billy Wilhelm.

I, Claude Patterson, do will my ability to always know my English and my friendly ways to Melvin Flowers.

I, Hubert Smith, do will my ability to have a steady girl friend to James Ruff.

I, Mary Troutman, do will my quiet ways to Joe Allman.

I, Mary Margaret Correll, do will my ability to get by to Louise Moss.

I, Billy Smithdeal, do will my desire to get into the Marines to "Pop" Woody.

I, Helen Morrison, do will my ability to speak only when spoken to to Doris Plaster.

I, Jerline Morgan, do will my nosy ways to Jack Goodnight.

I, Paul S. Smith, do will my enormous vocabulary to Hazel Wilhelm.

I, Paul M. Smith, do will my way with the women to Eddie Huffman.

I, Cecil Karriker, do will my impartial and neutral attitude to Kenneth Sloop.

I, Ray Smith, do will my flirtatious ways to Miss Lackey.

I, Sibyl Beaver, do will my love for China Grove boys to "Dot" Christopher.

I, Katheryn Roberts, do will my witty disposition to Junior Stewart.

I, Foy Deal, do will my friendly ways, neatness, and dry wit to C. D. Roseman.

I, Jerry Kelly, do will my artistic ability and mixed-up love life to Joanna Overcash.

I, Paul Kennerly, do will my ability to milk cows to Don Cross.

I, Betty Follette, do will my longing for something to eat all the time to Jack Goodnight.

I, Eloise Reavis, do will my desire for a certain boy to Nancy Sullivan.

I, Wade Carter, do will my love for agriculture to "Trimmy" Shoemaker.

I, Helen Eddleman, do will my ambitious ways and determination to get my education to Donna Janes Bost.

I, John Rodgers, do will my ability to drive very carefully to Pressley Brawley.

I, Jack Leazer, do will my "scatterbrain" to Jean Kennerly.

I, Virginia Lee Allman, do will my sportsmanship and my love for the opposite sex to "Red" Yates.

I, Frances Barringer, do will my business like manner and radiant smile to Virginia Litaker.

I, Doris Heglar, do will my dignity and ability to tell people what's what to Jackie Bost.

I, Kathleen Weaver, do will my pretty black curls to Evelyn Griffin.

I, Frances Pless, do will my "corny" jokes and beautiful red hair to Gordon Beaver.

I, Charles McCarn, do will my bright red curly hair to Margaret Sechler.

I, Clifford McCorkle, do will my ability to keep quiet to Hugh Parks.

I, Lewis Overcash, do will my tough luck of being picked on because I'm little to Mr. Smith.

I, Ola Mae Goodman, do will my beautiful big eyes to Sonny Beaver.

I, Ethel Bolen, do will my "far away look" to Reece Page.

I, Ruth Edwards, do will my ambition to to college to Gene Beaver.

I, Henrietta McDaniels, do will my sweet disposition to Joanna Russell.

I, Harold Parks, do will my good looks and dignity to Paul Sweat.

I, George Lee Pless, do will my real curly hair to Bobby Deal.

I, Louniel Jordan, do will my desire to come to school every day and to be a school teacher to Peggy Correll.

I, Claude Patterson, do will my ability to always know my English and my friendly ways to Melvin Flowers.

I, Dearl Correll, do will my use of good common sense and leadership to Bobby Butts.

I, Lucille Swicegood, do will my quick temper and ability to always have a boy friend to Doris Swink.

I, Lala Deal, do will my quietness in class and elsewhere to Irene McCool.

I, Arthur Davis, do will my baby ways and artistic ability to Johnny Dayvault.

I, Lollie Schenck, do will my ability to always have my French to Virginia McLaughlin.

I, Coit Ennis, do will my last minute attempts to Jackie Dayvault.

I, Ray P. Karriker, do will my good attitude to Kenneth Alexander.

I, Beatrice Page, do will my studious and ambitious nature to Billie Archer.

I, Myrtle Eddleman, do will my bashfulness to Jack Freeman.

I, Jean McLain, do will my ability to always have a good time to Oscar Beaver.

I, Patsy Whitaker, do will my baby ways and nice clothes to Helen Stewart.

I, Billy Kimball, do will my determination to get an education to Carl Freeman.

I, Clyde Goodman, do will my bus No. 66 to Betty Jean Freeze.

We, Mable Frances Deal and Doris Helms, do will our lasting friendship and neat clothes to Betty Overcash and Thelma Sloan.

Testators—

Jerline Kelly

Lucille Swicegood

HISTORY

August 25, 1943—121 Green Horns enroll at Landis Hi • "Big Wheels"—Leonard Cross, Beatrice Page, Herman Enochs, George Pless • Athletic Ability Shows • Girls' Barium Springs Champs • Big Celebration: Father-Son Banquet • Band uniforms arrive • May 19, 1944—"Sweet Summer Vacation."

September 18, 1944—93 wise Sophomores return • "Big Wheels" elected—Kathryn Sloop, Frances Pless, Ray Karriker, Beatrice Page • Beta Club Initiation • Year Highlight: Junior-Senior Banquet—April 12, Hotel Concord • Band travels to Shriners' Game in Charlotte—Dec. 2, 1944 • Baste-N-Taste Club organized • Choir sees big year • Class athletic ability increases • "Dumb Dollivar."

August 23, 1945—"Jolly Juniors" as Upper Classmen • Junior "Big Wheels" take office—Sibyl Beaver, Harold Parks, Beatrice Page, Frances Barringer • Fall Entertainment: Hayride and Weiner Roast—Hallowe'en Carnival • Our Greatest Delight: Giving Miss Mendenhall the "Run-around" • "Mama's Baby

Boy"—Our Dramatic Success • County and American Legion Basketball Tournaments • Santa Claus brings gala Christmas party • Choir robes arrive • Band creates better school spirit • Choir enters State Music Contest • Hot Dogs, Hayride and Corriher Springs!!!!!!! • May 31, 1946—Ends eventful year with "Swim" at Mirror's Lake—Splash, Splash!!!!!!!

August 22, 1946—Seventy-four dignified Seniors invade campus • "The Big Four"—Dearl Correll, Ray Preston Karriker, Junior Blackwelder, Beatrice Page • Long-awaited class rings arrive • Senior Day at Chapel Hill • Sleighbells, Santa and Christmas Season • Has anybody here seen "Shorty"? • Senior Play presented • Junior-Senior Banquet—Spring of 1947, Hotel Concord • Basketball Tournament • Junior-Senior Prom • "Kilroy" was here!!!!!!! • Caps and Gowns • Commencement • Diplomas.

Historians—

Sibyl Beaver

Ola Mae Goodman





CLASS POEM

How time does fly; the end is here,
The time to part is drawing near.
The world of promise before us lies
Like the morning star in the distant skies.

We're equipped with armor, we're prepared to fight,
For hardships are coming in our worldly flight.
The truth is our sword, knowledge is our light,
To guide us onward, as dark is the night.

It brings back memories to think of our parting,
But we then look forward to the life that is starting.
May our years together help brighten the way,
And may we remember this graduation day.

Arthur Davis, *Class Poet*

SENIOR SUPERLATIVES



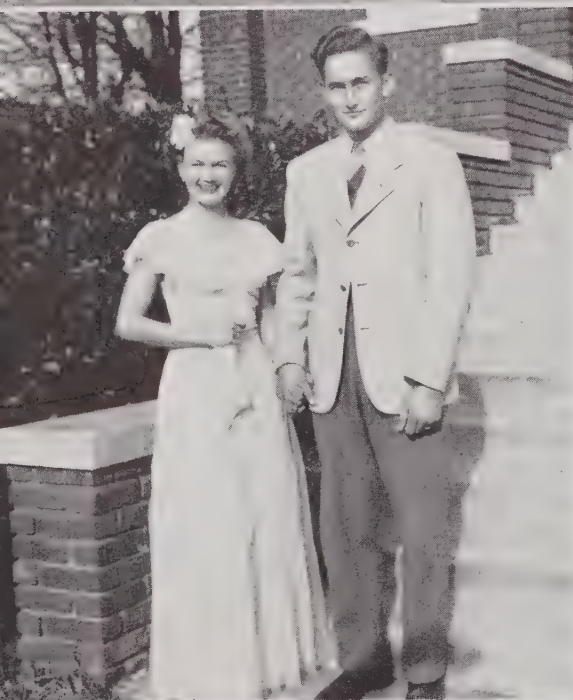
Best All-Around

FRANCES BARRINGER
WAYNE BEAVER



Most Athletic

VIRGINIA ALLMAN
TOMMY BOSTIAN



Best Looking

JERRY KELLY
HAROLD PARKS



Best Dressed

PATSY WHITAKER
DAVID BLACKWELDER, JR.



Most Intelligent

KATHRYN SLOOP
DEARL CORRELL



Most Popular

JERRY KELLY
WAYNE BEAVER

SENIOR SUPERLATIVES



Biggest Flirts

VIRGINIA LEE ALLMAN
WAYNE BEAVER



Best Sports

KATHERYN ROBERTS
DAVID BLACKWELDER, JR.



Wittiest

SIBYL BEAVER
CHARLES McCARN



Most Talkative

VIRGINIA LEE ALLMAN
PAUL M. SMITH



Friendliest

FRANCES BARRINGER
FOY DEAL



Most Likely to Succeed

KATHERYN SLOOP
DEARL CORRELL



CLASS OF '48

OFFICERS

<i>President</i>	Paul Sweat
<i>Vice-President</i>	Jo Russell
<i>Secretary</i>	Billy Wilhelm
<i>Treasurer</i>	Tommy Linn
<i>Advisors</i>	Mrs. H. S. Leafe, Miss Elizabeth Wallace





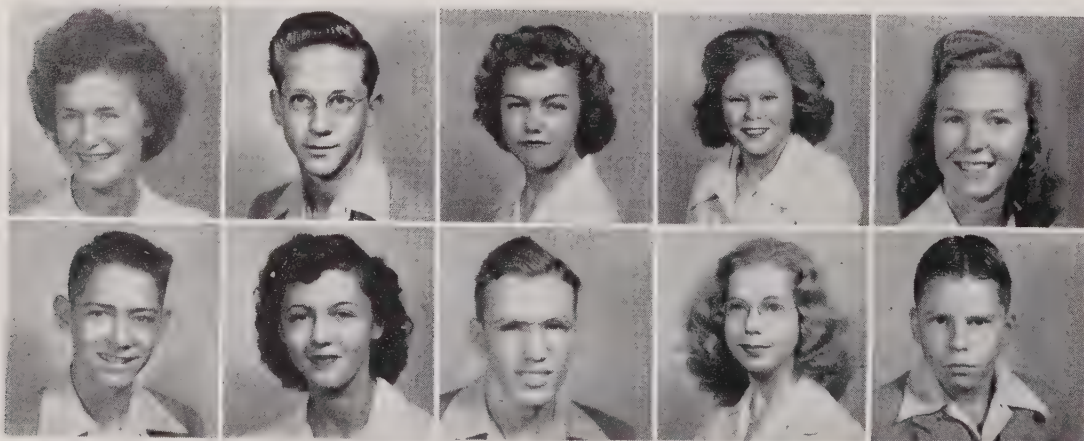
Left to Right: Evelyn Adams, Donna Jane Bost, Jackie Bost, Floyd Bost, Myrtle Brawley, Pressley Brawley, Ruth Brackett, Bobby Butts, Eleanor Cavin, Dorothy Christopher, Peggy Correll, Sue Corriher, Jim Corriher, Jackie Dayvault, Johnny Dayvault, William Deadmon, Rachel Deal, Catherine Eagle, Marcus Efrd, J. G. Efrd, Betty Sue Elder, Billy Foutz, Evelyn Griffin, Colleen Holshouser, Doris Karriker, Tommy B. Linn, Virginia Litaker, Virginia McLaughlin, Louise Moss, Pauline Overcash, Betty Lee Overcash, Clyde Patterson, Doris Plaster, Jo Russell, Margaret Sechler, Raymond Sechler, James Shoemaker, Thelma Sloan, Annie Smith, Nancy Smith, Paul Sweatt, Dorothy Upright, Margene Weatherman.



CLASS OF '49

OFFICERS

<i>President</i>	Oscar Beaver
<i>Vice-President</i>	Clarence Stewart, Jr.
<i>Secretary</i>	David Cavin
<i>Treasurer</i>	Peggy Eller
<i>Reporter</i>	Kenneth Sloop
<i>Advisors</i>	Miss Bolick, Miss Gattis



Left to Right: Ruth Abernathy, Joe Allman, Colleen Bebbler, Rachel Beaver, Alene Beaver, Gene Beaver, Willaree Bostian, Mason Brawley, Monica Brown, Billy Burgess.



Left to Right: David Cavin, Richard Carlisle, Rachel Correll, Joe Corriher, Billy Corriher, Fannie Deal, Peggy Eller, Betty Freeze, Faynell Freeze, Malvena Foutz, Teddy Fox, Elmer Goodman, Jack Goodnight, Billy Goodnight, J. B. Heglar, Curtis Helms, Betty Jo Hill, Lloyd Hill, Alice Nell Karricker, Jean Kennerly, Martha Kimball, Irene McCool, Nancy Mills, Billy Doris Murphy, Betty Jean Overcash, Reece Page, Hugh Parks, Frank Patterson, Margaret Price, Jerry Roberts, Madge Roseman, Hoyt Ruthledge, Vivian Sechler, Betty Sheeks, Kenneth Sloop, Maddie Smith, Helen Stewart, Doris Swink, Doris Wilkerson, Lonnie Wise, Betty Wright, Mary Helen Yost, Ray Von Yow.

CLASS OF '50

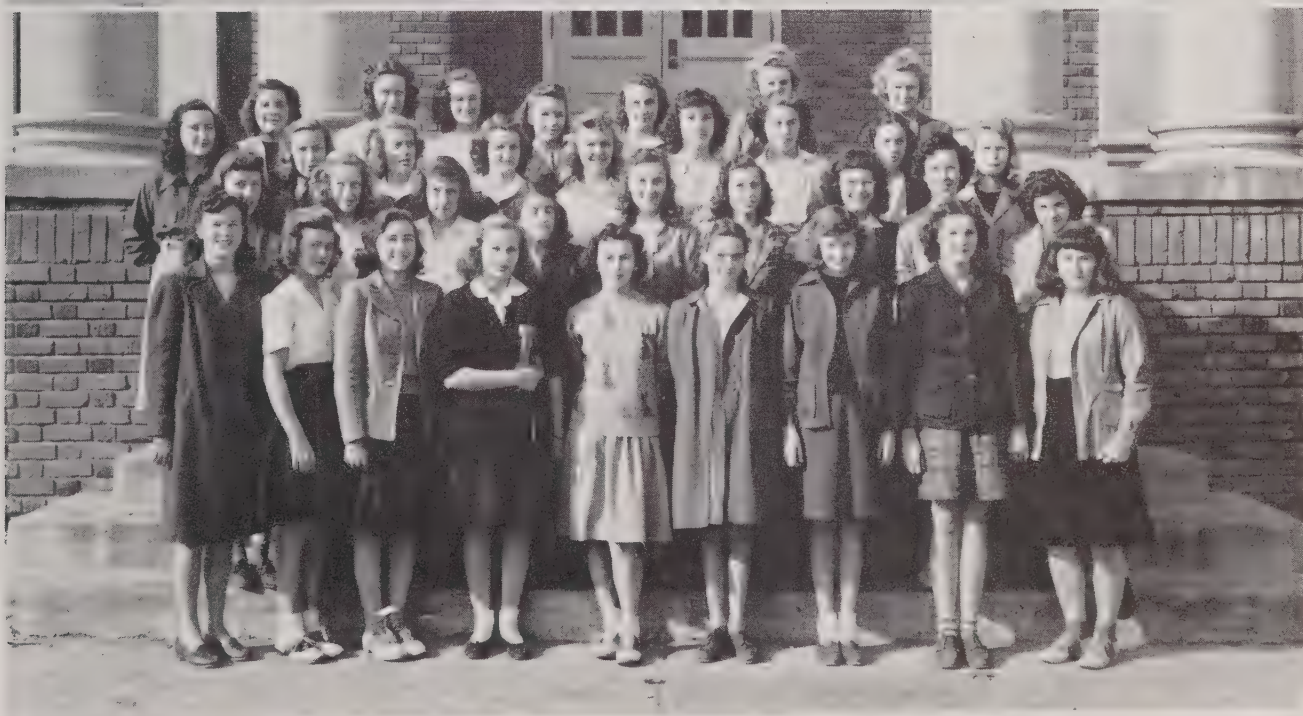
OFFICERS

<i>President</i>	Betty White
<i>Vice-President</i>	Betty Lipe
<i>Secretary</i>	Zelma Plaster
<i>Treasurer</i>	Daphne Campbell



MISS LACKEY'S HOMEROOM: *Left to Right, First Row:* Neil Clodfelter, Bobby Bost, Ray Bostian, Ross Lipe, Bobby Corriher, Ted Guye, Oscar Garver, Hubert Morrison. *Second Row:* Billy Leazer, Kenneth Alexander, Melvin Flowers, George Frye, Lewis Strickland, Junior Patterson, Harold McCorkle, Max Faggart. *Third Row:* Miss Lackey, Ralph Petrea, Tommy Funderburk, J. B. Church, Kenneth Fink, James McLain. *Fourth Row:* G. W. Leazer, Kenneth Overcash, Marvin King, Robert Upright, Herman Troutman, Jack Freeman.

MR. SMITH'S HOMEROOM: *Left to Right, First Row:* Keith Fink, Bob Deal, Don Cross, Carl Freeman, Eddie Huffman, John Taylor, Herman Fisher, Billy Hooper, Grayton Daniels, Robert Vanderburg. *Second Row:* Norman Basinger, Charlie Smith, Gene Faggart, Charles Harrington, Millard Corriher, Lewis Chester, Bennie Leazer. *Third Row:* Samuel McCorkle, David Griffin, Charlie Honbarger, Ralph Weddington, Roy Lee Herman, Jack Owens, Mr. A. C. Smith. *Fourth Row:* Kenneth Johnson, Bradford Burgess, Glenn Overcash, Wade Hampton, Grady Efrid, William McCreary.



MISS McCOMBS' HOMEROOM: *Left to Right, First Row:* Rena Osborne, Lois Burris, Alice Coone, Betty White, Betty Lipe, Emma J. Rodon, Naomi Allman, Vertie Haynes, Betty Strickland. *Second Row:* Fay Patterson, Audrey Bostian, Betty Bostian, Mary Sanders, Dollie Ann Fisher, Elsie Weddington, Joyce McLain, Druscilla Cook, Myrtle Feemster. *Third Row:* Miss McCombs, Betty Kerr, Margaret Ann Mills, Euvalee Kimball, Annie Huffman, Margie Marlowe, Dora Sutton, Mary Jane Gordon, Brittie Smith. *Fourth Row:* Betty Karriker, Betty Lambert, Mahel Sechler, Rebecca Story, Geraldine Smith, Hilda James, Mary Frances Edwards.



MRS. RITCHIE'S HOMEROOM: *Left to Right, First Row:* Katherine Honeycutt, Mabel Biggerstaff, Jeanette Wilson, Billie Archer, Corinna "Tootsie" Alexander, Carolyn Goodnight, Lillie Mae Walters, Comelita Shinn. *Second Row:* Lujean Sweatt, Ettawa Strickland, Daphne Ann Campbell, Joanna Overcash, Ann Blackwelder, Maxine Allman, Evelyn Andrews. *Third Row:* Virginia Fowler, Wilma Garver, Mary Frances Spears, Margaret Hyde, Doris Correll, Hazel Outen, Margie Roseman. *Fourth Row:* Mrs. John A. Ritchie, Naomi Edwards, Gail Brawley, Maxie Steele, Carolyn Lipe, Zelma Plaster.



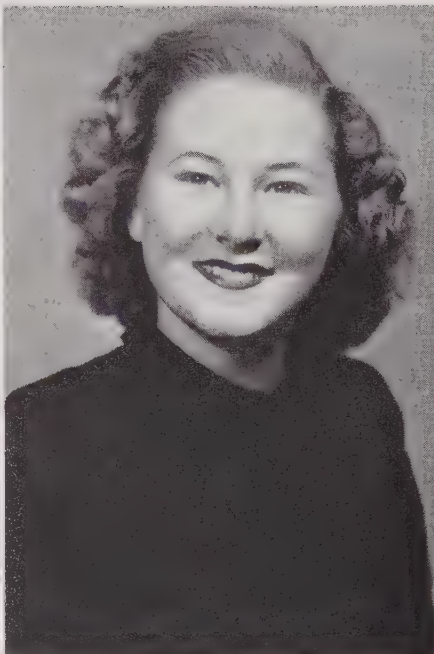


A
C
T
I
V
I
T
I
E
S





ALLMAN



BARRINGER



BARRIER

THE YELLOW JACKET

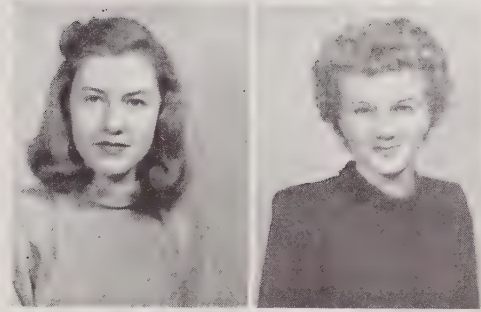
VIRGINIA LEE ALLMAN
Editor-in-Chief

FRANCES E. BARRINGER
Business Manager

MISS LILLIAN BARRIER
Advisor

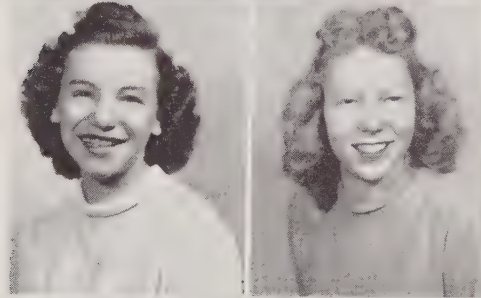
Associate Editor
KATHRYN SLOOP

Art Editor
JERRY KELLY



Circulation Manager
KATHERYN ROBERTS

Associate
FRANCES PLESS



Advertisement Manager
SIBYL BEAVER

Associate
DORIS HEGLAR

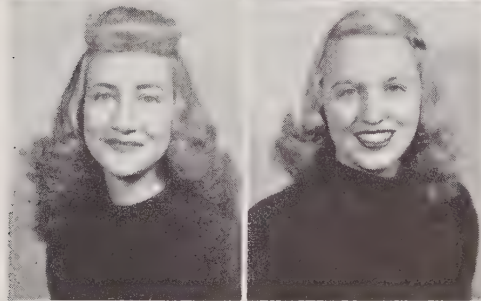
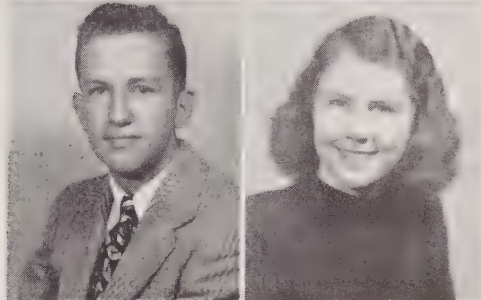


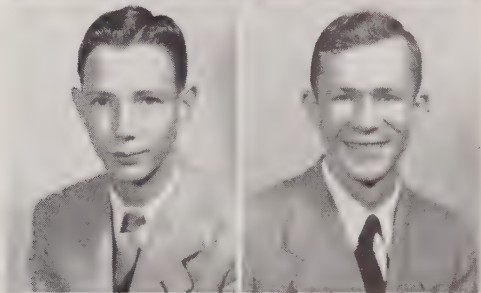
Photo Editor
TOMMY BOSTIAN

Associate
PATSY WHITAKER



Club Editor
WAYNE BEAVER

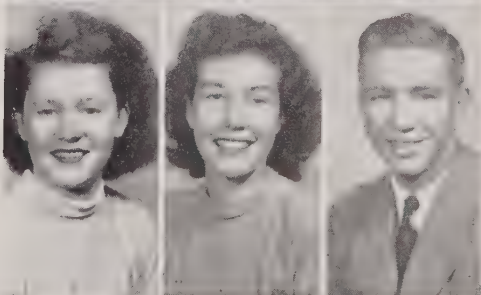
Sports Editor
DEARL CORRELL



Organization Editor
PEGGY CORRELL

Features Editor
JO RUSSELL

Copy Editor
HERMAN BILLINGS

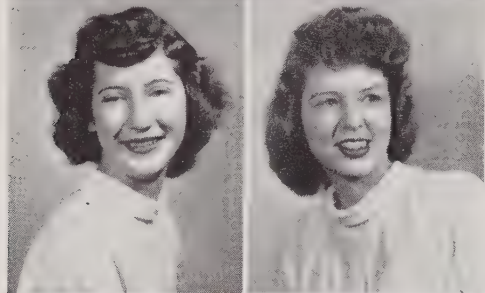




THE SPECTATOR

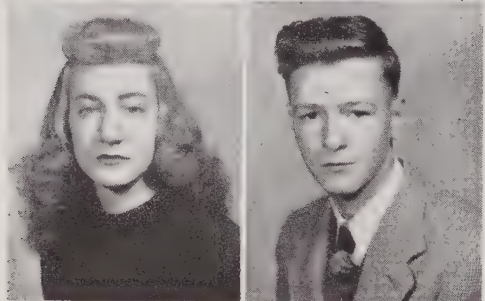
Editor-in-Chief
WAYNE BEAVER

Faculty Advisor
MISS LILLIAN BARRIER



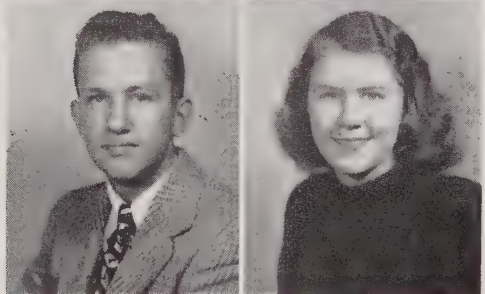
Business Manager
VIRGINIA LEE ALLMAN

Associate Editor
BETTY FOLLETTE



Circulation Manager
SIBYL BEAVER

Associate Business Manager
JUNIOR BLACKWELDER



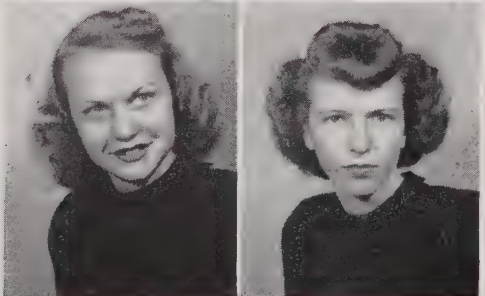
Boys' Sports Editor
TOMMY BOSTIAN

Girls' Sports Editor
PATSY WHITAKER



Art Editor
JERRY KELLY

Grade News Editor
DOT CHRISTOPHER



Associate Grade News Editor
VIRGINIA LITAKER

Proof Reader
ELOISE REAVIS

THE SPECTATOR

Class Editor
ANNIE SMITH

Special Reporter
FRANCES BARRINGER

Library Editor
FOY DEAL

Mimeographer
DORIS HEGLAR

Mimeographer
FRANCES PLESS

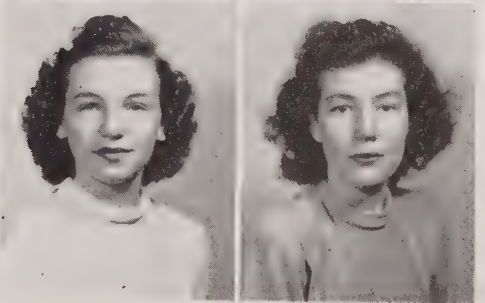
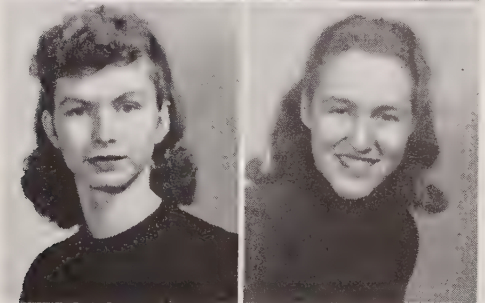
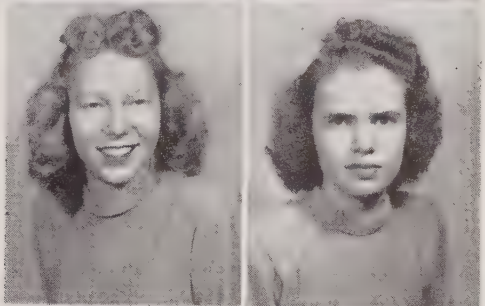
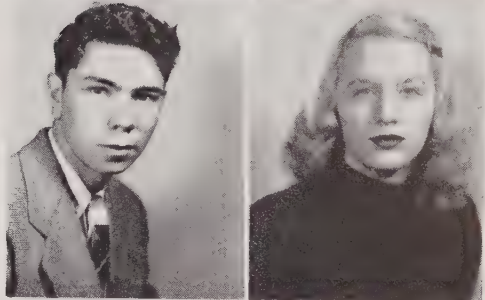
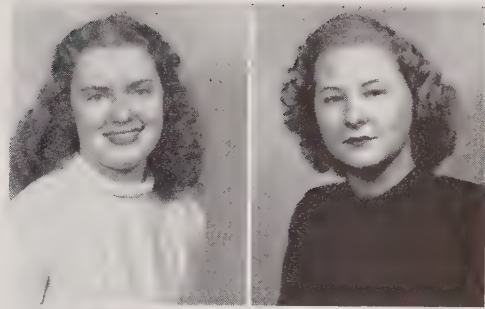
Mimeographer
OLA MAE GOODMAN

Typist
HELEN MURDOCH

Typist
BONNIE EDWARDS

Typist
KATHERYN ROBERTS

Associate Circulation Manager
JOANNA RUSSELL





BAND

President, Tommy Bostian; Vice-President, Doris Plaster; Secretary, Foy Deal; Treasurer, George Pless; Reporter, Peggy Leaf; Advisor, Miss Mary Louise Moore.



GLEE CLUB

President, Frances Pless; Vice-President, Doris Heglar; Secretary, Jerry Kelly; Treasurer, Sibyl Beaver; Reporter, Jo Russell; Advisor, Miss Mary Louise Moore.



BETA CLUB

President, Frances Barringer; Vice-President, Helen Murdoch; Secretary, Sibyl Beaver; Treasurer, Kathryn Roberts; Advisor, Mrs. Ralph Linn.

MONOGRAM CLUB

President, Billy Wilhelm; Vice-President, Tommy Linn; Secretary, Frances Yates; Treasurer, Buddy Thomas; Advisor, H. A. McCreary.



JOURNALISM CLUB

President, Frances Pless; Vice-President, Doris Heglar; Secretary, Jack Leazer; Treasurer, Jack Leazer; Reporter, Eloise Reavis; Advisor, Lillian Barrier.



LIBRARY CLUB

President, Junior Blackwelder; Vice-President, Ruth Abernathy; Secretary, Trimmy Shoemaker; Treasurer, Betty White; Advisor, Miss Elizabeth Wallace.





PUBLIC SPEAKING CLUB

President, Paul Sweatt; Vice-President, Franklin Wise; Secretary and Treasurer, Ray Smith; Reporter, Dearl Correll; Advisor, Miss Patsy McCombs.



F. F. A.

President, Ray Karriker; Vice-President, Paul Sweatt; Secretary, Cecil Karriker; Treasurer, Sam Wise; Reporter, G. W. Leazer; Advisor, S. P. Teague.

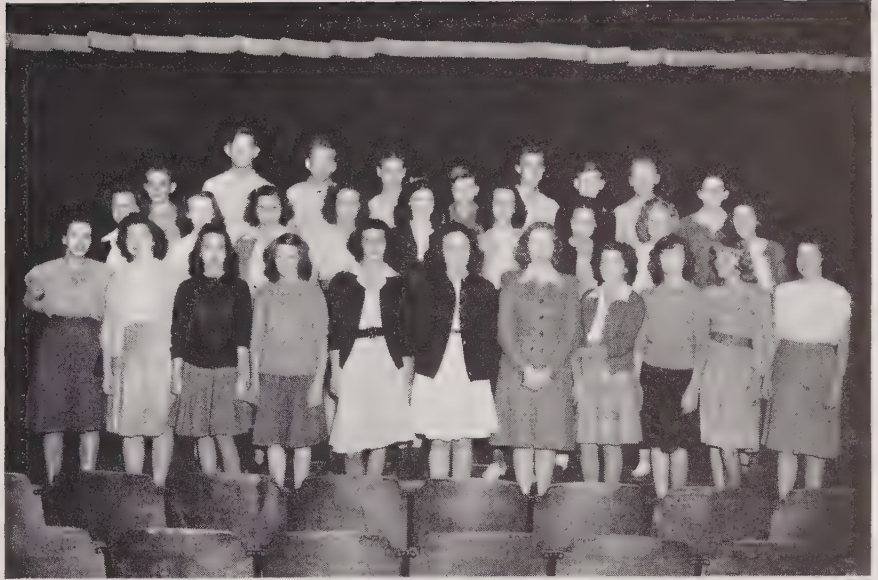


FUTURE HOMEMAKERS OF AMERICA

President, Kathryn Sloop; Vice-President, Audrey Karriker; Secretary, Margaret Campbell; Treasurer, Dot Christopher; Reporter, Annie Smith; Historian, Pauline Overcash; Advisor, Miss Pauline Corriher.

DRAMATICS CLUB

President, Oscar Beaver; Vice-President, Annie Blackwelder; Secretary, Doris Swink; Treasurer, Doris Swink; Chairman of Program Committee, Joanna Overcash; Reporter, Rena Osborne; Advisor, Miss Doris Lackey.



BOYS' SPORTS CLUB

President, Junior Stewart; Vice-President, Reece Page; Secretary, Bobby Butts; Treasurer, Bobby Butts; Reporter, Ray Perkins; Advisor, Mr. A. C. Smith.



GIRLS' SPORTS CLUB

President, Helen Stewart; Vice-President, Gail Brawley; Secretary and Treasurer, Doris Karriker; Reporter, Donna Bost; Advisor, Mrs. John Ritchie.





ART CLUB

President, Betty Lipe; Vice-President, Keith Fink; Secretary, Lewis Strickland; Treasurer, Lewis Strickland; Reporter, Monica Brown; Advisor, Miss LaMonna Gattis.



CRAFTS CLUB

President, Dorothy Sells; Vice-President, Evelyn Andrews; Secretary, Betty Jean Scerry; Treasurer, Betty Jean Scerry; Reporter, Mattie Smith; Advisor, Miss Marie Bolick.



MUSIC CLUB

President, Foy Deal; Vice-President, Bobby Bost; Secretary and Treasurer, George Pless; Advisor, Miss Mary Louise Moore.



Landis High School Eleventh Grade Presents

“Aunt Samantha Rules the Roost”

A Farce in Three Acts by Charles George

Director—Mrs. Ruth Leafe

CAST

Aunt Samantha Simpkins—an old maid Joanna Russell
 Serena Simpkins—her older niece “Dot” Christopher
 Sophie Simpkins—her younger niece Doris Plaster
 Polly Paine—maid at the Simpkins’ Frances Yates
 Annie Ambrose—the village dressmaker Virginia Litaker
 Blanche Bowers—a woman of very few words Edith Mae Hendley
 Lucien Littlefield—a farmer Billy Wilhelm
 Blair Boswell—who likes Serena Jacky Dayvault
 Frank Fairfield—who likes Sophie Tommy Linn
 Lawrence Lovewell—a stranger Johnny Dayvault
 Buddy Baskins—the grocery boy Buddy Thomas





A
T
H
L
E
T
I
C
S
★



CHEERLEADERS

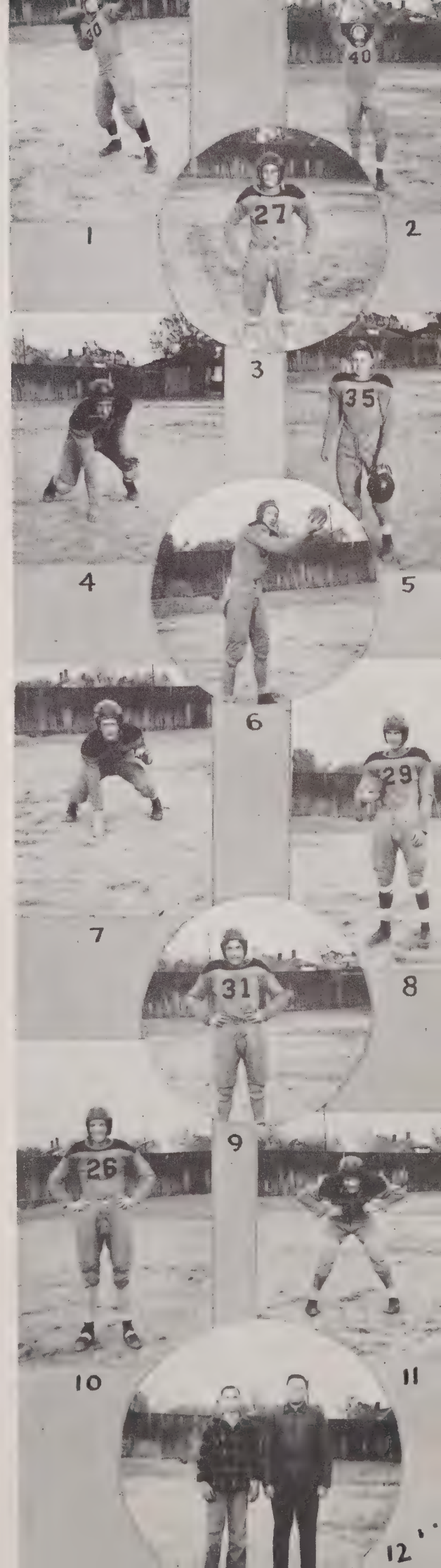
*Left to Right, First Row: Jo Russell, Betty White, Virginia Lee Allman • Second Row:
Clara Howell, Pressley Brawley, Lois Burris.*



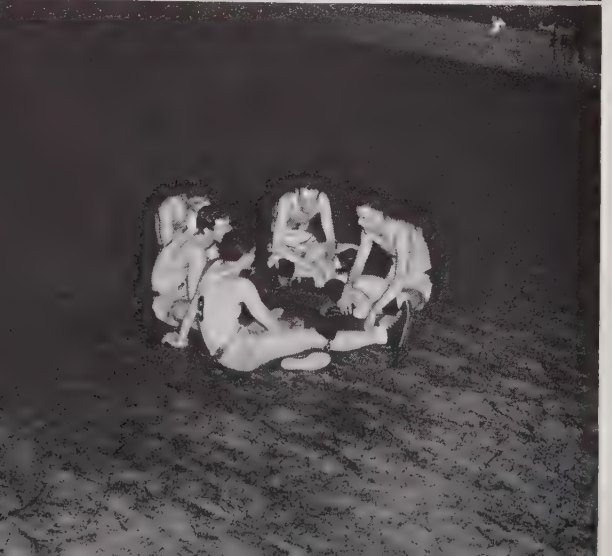
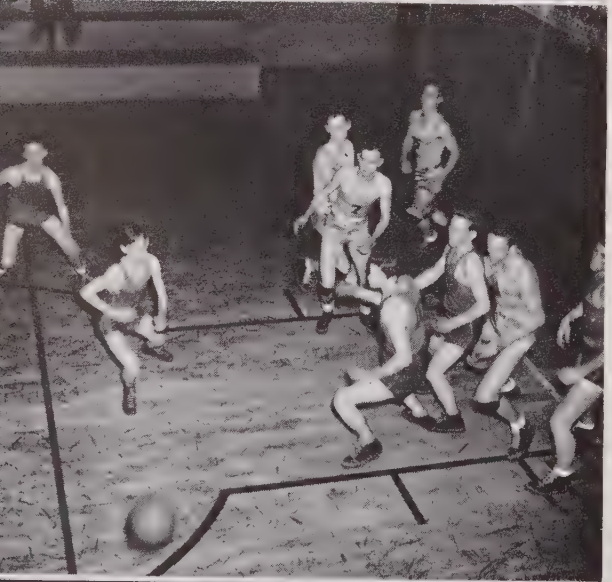
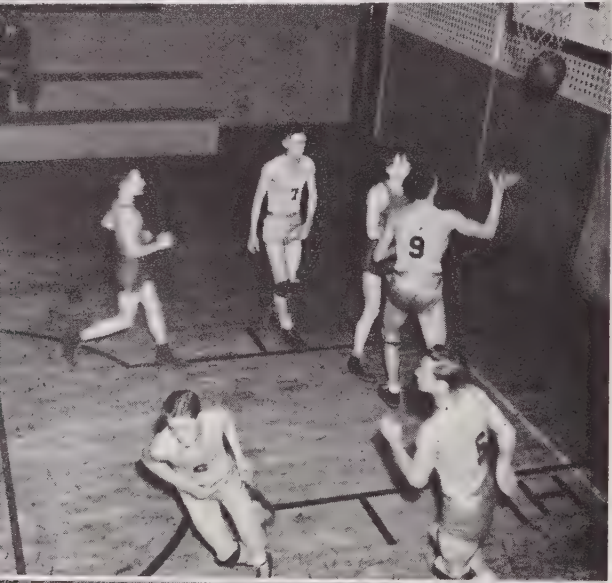
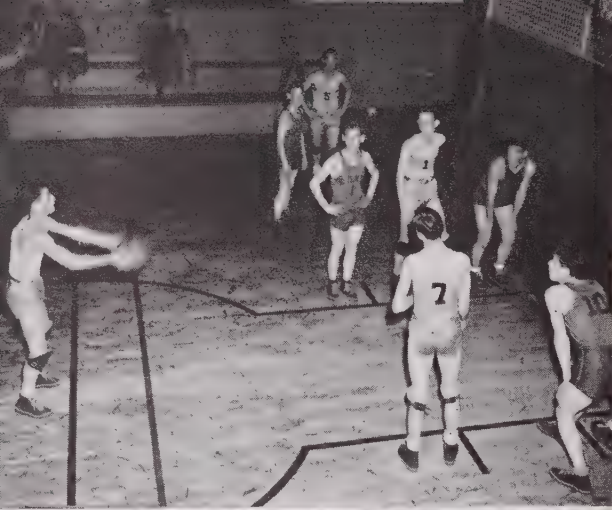
FOOTBALL

Left to Right, First Row: Bobby Garver, Arnold Yates, Managers; Wayne Beaver, End; Johnnie Dayvault, Tackle; Buddy Thomas, Guard; Jackie Dayvault, Center; Junior Blackwelder, Guard; George Pless, Tackle; Tommy Bostian, End. • *Second Row:* Mr. Bostian, Coach; Tommy Linn, Back; Bobby Cross, Back; Billy Wilhelm, Back; Bobby Butts, End; Marcus Efird, Back; Ray Perkins, Back; James Shoemaker, Back. • *Third Row:* Kenneth Fink, Tackle; Ralph Petrea, Guard; Anthony Osborne, Back; Kenneth Alexander, Tackle; Bobby Arthurs, Tackle; Clayton Steele, Guard; Coit Ennis, Guard; Jack Freeman, End.

1. Bobby Cross, Captain
2. Tommy Bostian, Co-Captain
3. Tommy Linn
4. Johnny Dayvault
5. Buddy Thomas
6. Red Beaver
7. Junior Blackwelder
8. Billy Wilhelm
9. James Shoemaker
10. Bobby Butts
11. Ray Perkins
12. Arnold Yates, Bobby Garver, Managers



BOYS' BASKETBALL



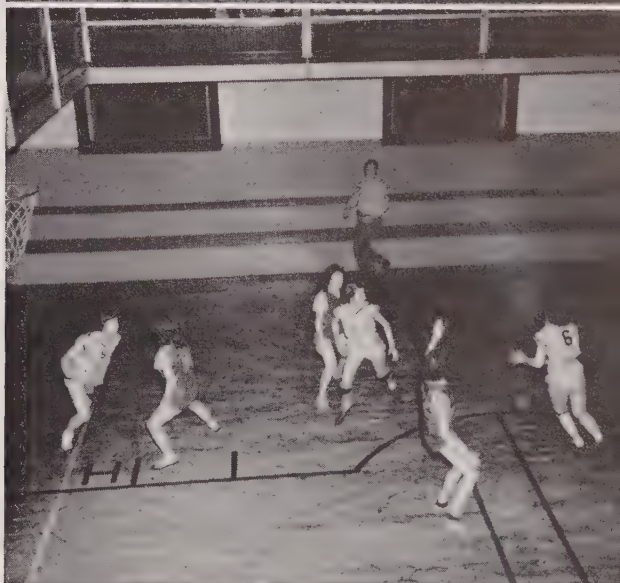
Left to Right, First Row: James Shoemaker, Buddy Thomas, Wayne Beaver, Tommy Bostian, Billy Wilhelm, Bobby Cross. • *Second Row:* L. A. Overcash, Manager; Tommy Linn, Herman Billings, George Pless, Coit Ennis, Bobby Butts, Mr. McCreary, Coach.



GIRLS' BASKETBALL



Left to Right, First Row: Peggy Eller, Billie Murphy, Sibyl Beaver, Helen Stewart, Frances Yates, Virginia Lee Allman, Forwards. • *Second Row:* Doris Karriker, Manager; Donna Jane Bost, Katheryn Roberts, Ruth Livingston, Virginia Lita-ker, Doris Plaster, Guards; Mr. McCreary, Coach. • *Absent from picture:* Lucille Swicegood, guard.





BASEBALL

Left to Right, Front Row: Eddie Huffman, Manager; Don Cross, Tommy Bostian, Frank Overcash, J. C. Phipps, Carl Freeman, Bobby Cross, Billy Wilhelm, Jerry Pless, Donald Carpenter, Manager.

• *Back Row:* Mr. Norman Leafe, Coach; David Cavins, Bobby Butts, Tommy Linn, Buddy Thomas, Junior Blackwelder, Clarence Stewart, Coit Ennis, Glenn Broome, Kenneth Fink, Joe Allman.





ADVERTISEMENTS

*All Photographs Made
For This Annual
By*

TORRENCE STUDIO



P. O. BOX 888 + PHONE 2825

SALISBURY, NORTH CAROLINA

Compliments of

CORRIHER MILLS COMPANY



MANUFACTURERS OF
HIGH GRADE YARN

LANDIS, NORTH CAROLINA

Compliments of

LINN MILL COMPANY

MANUFACTURERS OF
COTTON YARNS

LANDIS, NORTH CAROLINA

Compliments of

MERCHANTS AND FARMERS BANK



LANDIS, NORTH CAROLINA

GRAHAM SMITH GROCERY

"ON THE CURVE"

MEATS AND GROCERIES

PHONE 84-J

LANDIS, NORTH CAROLINA

LINN-EDWARDS
DRUG COMPANY

Druggists



LANDIS, NORTH CAROLINA

BIAS-LINN
FURNITURE CO.



PHONE 19

LANDIS, NORTH CAROLINA

TOWER
MANUFACTURING CO.

*Weavers of
Jacquard Bedspreads*

LANDIS, NORTH CAROLINA

ARNOLD'S

"YOUR GUIDE TO
BETTER FASHIONS"



108 S. MAIN ST.
SALISBURY, N. C.

THE GOLD SHOP

LADIES' WEARING APPAREL

Salisbury, N. C. Newton, N. C.

Hickory, N. C. Lenoir, N. C.

Concord, N. C.

It's Smart To Be Thrifty



Compliments of

SALISBURY EVENING POST

Salisbury, N. C.



Compliments of

**MORGENSON'S RADIO
SERVICE**

Repairs All Makes and Models

Guaranteed

Compliments of

E. L. KARRIKER

JEWELER

Watches — Jewelry — Clocks

Repaired

Landis, N. C.



Compliments of

LANDIS ICE & FUEL CO.

Landis, N. C.



Have Your Hair Styled At The

IDEAL BEAUTY SHOPPE

Landis, N. C.



Compliments of

MILLER'S CAFE

Phone 60-W

Landis, N. C.



Diamonds, Watches, Jewelry, Sporting
Goods, Clothing, Luggage, Musical
Instruments

RELIABLE PAWN SHOP

Licensed and Bonded

112 North Main Street

Money Loaned On Anything of Value

Phone 492

Salisbury, N. C.

NORMAN INGLE JEWELER

HERFF JONES

(Class Rings)



SALISBURY, NORTH CAROLINA

SNIPES SERVICE STATION

Washing and Greasing

PHONE 42-L

LANDIS, NORTH CAROLINA

This Page Is

Compliments of



BELKS DEPARTMENT STORE

— and —

BELKS BARGAIN STORE



KANNAPOLIS, NORTH CAROLINA

Compliments of

THE DAILY INDEPENDENT

Kannapolis, North Carolina

Compliments of

TOWEL CITY TOWEL COMPANY OF KANNAPOLIS, N. C.

to

CLASS OF '47

Compliments of

F. L. SMITH DRUG COMPANY

"The Rexall Store"

Phone 9

Kannapolis, N. C.

Compliments of

G A B L E ' S

"Smart Fashions for Men and Women"

West First Street

Kannapolis, North Carolina



Compliments of

KAY'S LUNCHEONETTE

"Good Food A Specialty"

Kannapolis, N. C.

Compliments of

**FIRESTONE HOME
& AUTO CO.**

Kannapolis, N. C.

Compliments of

**BELL MUSIC &
STATIONERY CO.**

To the
CLASS OF '47
Kannapolis, N. C.

Luck to Graduates of the
Class of '47
from

VIRGINIA'S
Ladies Ready-to-Wear
Kannapolis, N. C.

W. H. LEONARD, JR.

The Store of Finest Jewelry
at
Lower Prices and on Easy Terms
Watches — Jewelry
Kannapolis, N. C.

Compliments of

**BILL MULL'S MUSIC
COMPANY**

"Get Your Latest Recordings"
Phone 270 West Avenue
Kannapolis, N. C.

Best of Luck to Class of '47

from

BELK'S BARGAIN STORE

Kannapolis, N. C.

Compliments of

THE SMART SHOP

"Exclusive But Not Expensive"

Kannapolis, N. C. — Phone 281
Concord, N. C. — Phone 4270

Compliments of

THE LANDIS THEATRE

LANDIS, NORTH CAROLINA

HEGLAR-LINN BARBER SHOP

"It Pays To Look Well"

Landis, North Carolina

CONCLUSION

Here, at the end of the year, we, the tired staff members, say farewell to the '47 annual.

It was a year of hard earned glory, with work and more work. Ad hunting took many afternoons that would liked to have been spent in a movie; working on scripts when we'd much rather be out with the gang; or using our film for the annual when we'd much rather use them for something else. But, bit by bit, ads, scripts, and pictures began to shape into the form of an annual for the student body to be proud of. The day came for the organization of materials, and what a job! Virginia flying around hunting Frances to write a check; Sibyl, to complete an ad; and Patsy, for a few more pictures. Confusion, yes, but the results prove that it was worth all of it.

This staff may not be professionals, but may this, the '47 *Yellow Jacket*, bring you many, many enjoyable hours in the memory of the good old school days.

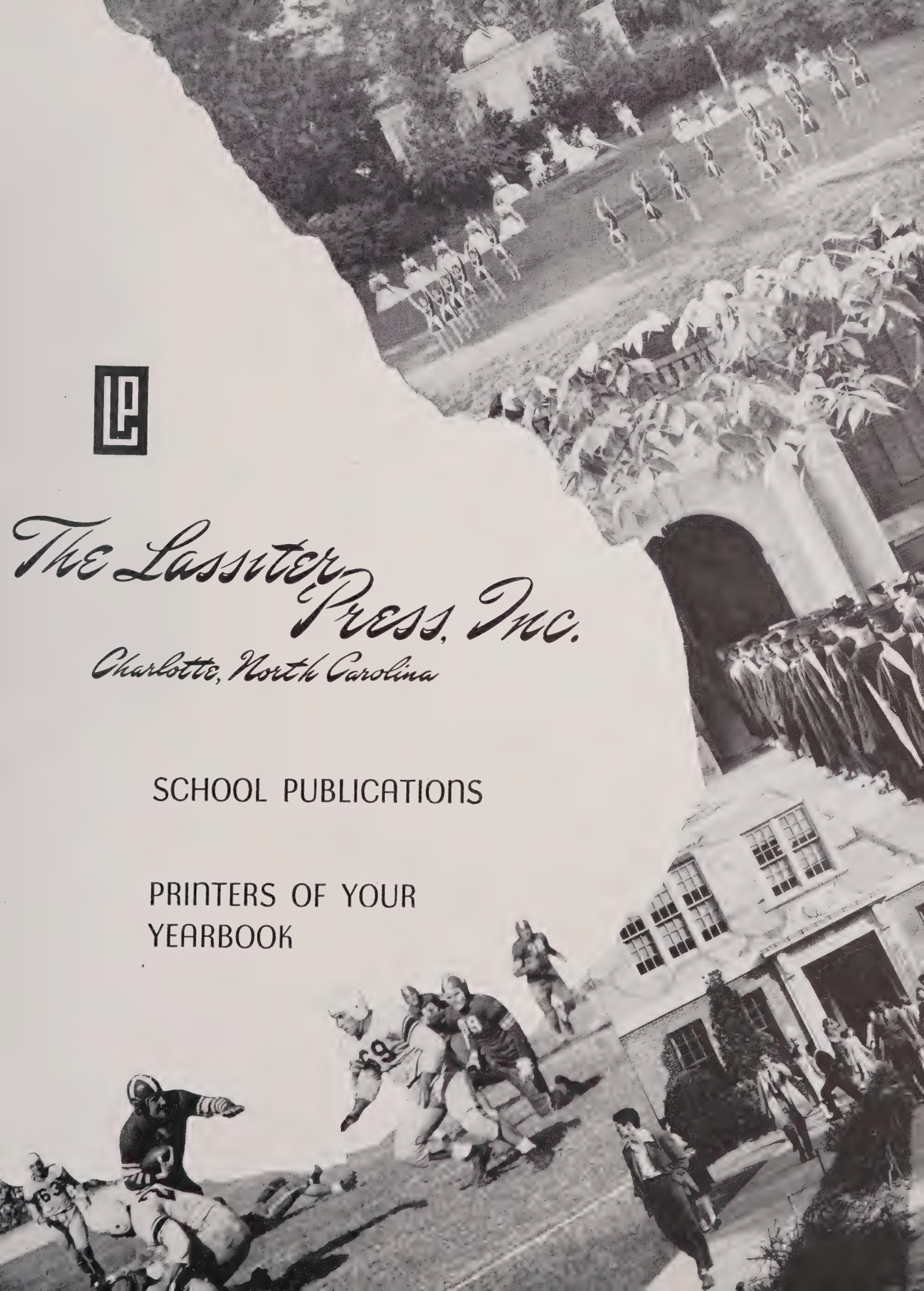




*The Lassiter
Press, Inc.*
Charlotte, North Carolina

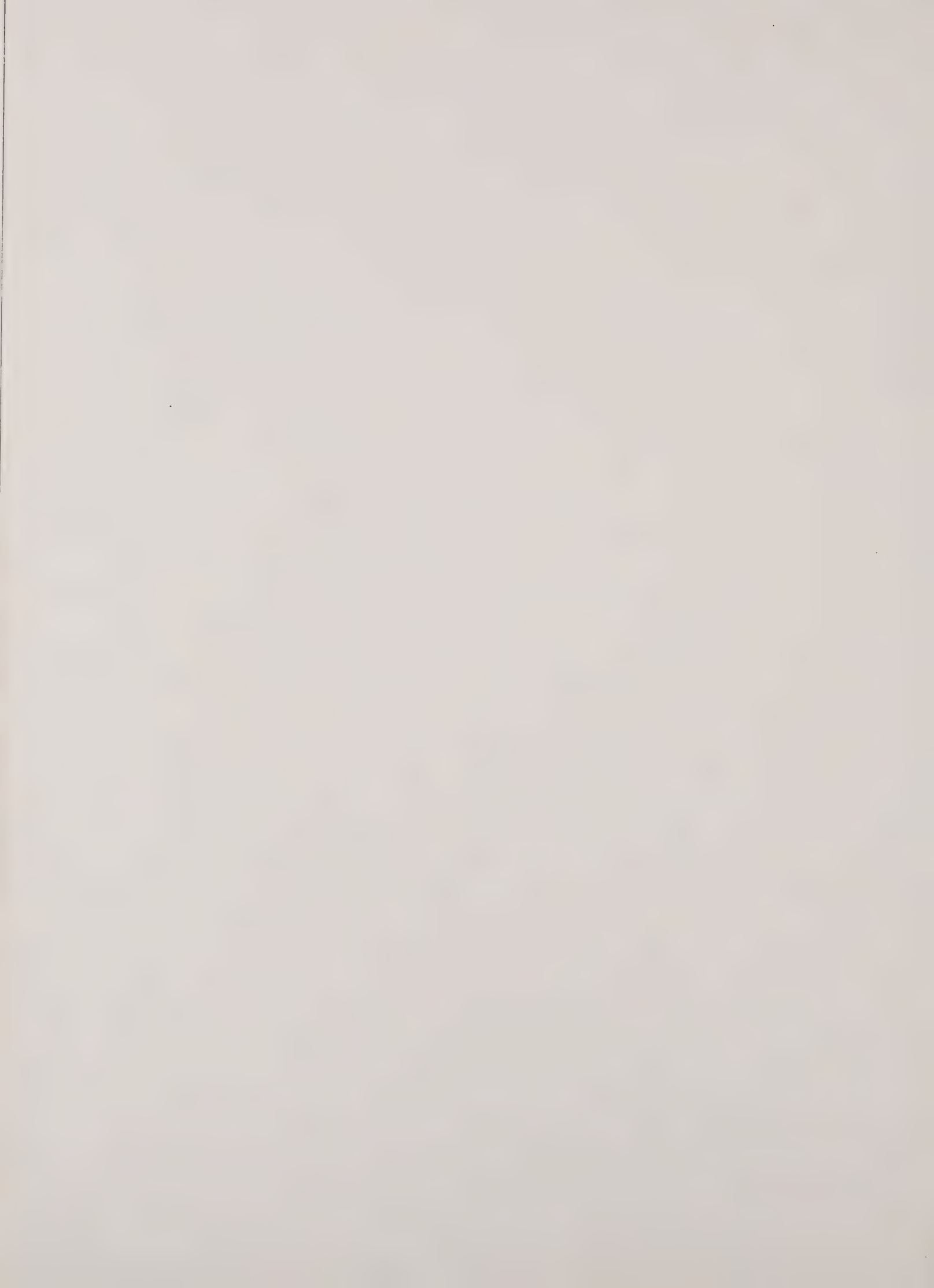
SCHOOL PUBLICATIONS

PRINTERS OF YOUR
YEARBOOK



Autographs

Autographs



ROWAN PUBLIC LIBRARY
SALISBURY, NC



3907815528

